

1 **Retinal Age as a Predictive Biomarker for Mortality Risk**

2

3 **Running title:** Retinal age predicts mortality

4

5 **Authors**

6 Zhuoting Zhu, MD PhD<sup>1</sup>

7 Danli Shi, MD<sup>2</sup>

8 Guankai Peng, BS<sup>3</sup>

9 Zachary Tan, MBBS, MMed, MMSc<sup>4</sup>

10 Xianwen Shang, PhD<sup>1</sup>

11 Wenyi Hu, MBBS<sup>1</sup>

12 Huan Liao, MD<sup>5</sup>

13 Xueli Zhang, PhD<sup>1</sup>

14 Yu Huang, MD PhD<sup>1</sup>

15 Honghua Yu, MD PhD<sup>1</sup>

16 Wei Meng, BS<sup>3</sup>

17 Wei Wang, MD PhD<sup>2</sup>

18 Xiaohong Yang, MD PhD<sup>1</sup>

19 Mingguang He, MD PhD<sup>1,2,4,6</sup>

20

21 **Affiliations**

22 1. Department of Ophthalmology, Guangdong Academy of Medical Sciences,  
23 Guangdong Provincial People's Hospital, Guangzhou, China.

24 2. State Key Laboratory of Ophthalmology, Zhongshan Ophthalmic Center, Sun  
25 Yat-sen University, Guangzhou, China.

26 3. Guangzhou Vision Tech Medical Technology Co., Ltd.

27 4. Centre for Eye Research Australia; Ophthalmology, University of Melbourne,  
28 Melbourne, Australia.

29 5. Neural Regeneration Group, Institute of Reconstructive Neurobiology, University  
30 of Bonn, Bonn, Germany.

31 6. Ophthalmology, Department of Surgery, University of Melbourne, Melbourne,  
32 Australia

33

34 **Word count: Summary: 249; Research in context: 286; Whole paper: 2549.**

35 **Tables: 2; Figures: 5.**

36

37 **Corresponding author**

38 Mingguang He, MD PhD

39 Email: [mingguang.he@unimelb.edu.au](mailto:mingguang.he@unimelb.edu.au)

40 Xiaohong Yang, MD PhD

41 Email: [syyangxh@scut.edu.cn](mailto:syyangxh@scut.edu.cn)

42 Wei Wang, MD PhD

43 Email: [zoc\\_wangwei@yahoo.com](mailto:zoc_wangwei@yahoo.com)

## 44 **Summary**

## 45 **Background**

46 Ageing varies substantially, thus an accurate quantification of ageing is important. We  
47 developed a deep learning (DL) model that predicted age from fundus images (retinal  
48 age). We investigated the association between retinal age gap (retinal  
49 age-chronological age) and mortality risk in a population-based sample of  
50 middle-aged and elderly adults.

## 51 **Methods**

52 The DL model was trained, validated and tested on 46,834, 15,612 and 8,212 fundus  
53 images respectively from participants of the UK Biobank study alive on 28<sup>th</sup> February  
54 2018. Retinal age gap was calculated for participants in the test (n=8,212) and death  
55 (n=1,117) datasets. Cox regression models were used to assess association between  
56 retinal age gap and mortality risk. A restricted cubic spline analyses was conducted to  
57 investigate possible non-linear association between retinal age gap and mortality risk.

## 58 **Findings**

59 The DL model achieved a strong correlation of 0.83 ( $P < 0.001$ ) between retinal age  
60 and chronological age, and an overall mean absolute error of 3.50 years. Cox  
61 regression models showed that each one-year increase in the retinal age gap was  
62 associated with a 2% increase in mortality risk (hazard ratio=1.02, 95% confidence  
63 interval:1.00-1.04,  $P = 0.021$ ). Restricted cubic spline analyses showed a non-linear  
64 relationship between retinal age gap and mortality ( $P_{\text{non-linear}} = 0.001$ ). Higher retinal  
65 age gaps were associated with substantially increased risks of mortality, but only if  
66 the gap exceeded 3.71 years.

## 67 **Interpretation**

68 Our findings indicate that retinal age gap is a robust biomarker of ageing that is  
69 closely related to risk of mortality.

## 70 **Funding**

71 National Health and Medical Research Council Investigator Grant, Science and  
72 Technology Program of Guangzhou.

73

74 **Key words:** retinal age, mortality, prediction

75 **Research in context**

76 **Evidence before this study**

77 Ageing at an individual level is heterogeneous. An accurate quantification of the  
78 biological ageing process is significant for risk stratification and delivery of tailored  
79 interventions. To date, cell-, molecular-, and imaging-based biomarkers have been  
80 developed, such as epigenetic clock, brain age and facial age. While the invasiveness  
81 of cellular and molecular ageing biomarkers, high cost and time-consuming nature of  
82 neuroimaging and facial ages, as well as ethical and privacy concerns of facial  
83 imaging, have limited their utilities. The retina is considered a window to the whole  
84 body, implying that the retina could provide clues for ageing.

85

86 **Added value of this study**

87 We developed a deep learning (DL) model that can detect footprints of aging in  
88 fundus images and predict age with high accuracy for the UK population between 40  
89 and 69 years old. Further, we have been the first to demonstrate that each one-year  
90 increase in retinal age gap (retinal age-chronological age) was significantly associated  
91 with a 2% increase in mortality risk. Evidence of a non-linear association between  
92 retinal age gap and mortality risk was observed. Higher retinal age gaps were  
93 associated with substantially increased risks of mortality, but only if the retinal age  
94 gap exceeded 3.71 years.

95

96 **Implications of all the available evidence**

97 This is the first study to link the retinal age gap and mortality risk, implying that  
98 retinal age is a clinically significant biomarker of ageing. Our findings show the  
99 potential of retinal images as a screening tool for risk stratification and delivery of  
100 tailored interventions. Further, the capability to use fundus imaging in predicting  
101 ageing may improve the potential health benefits of eye disease screening, beyond the  
102 detection of sight-threatening eye diseases.

## 103 **Introduction**

104 Globally, the population aged 60 and over is estimated to reach 2.1 billion in 2050.<sup>1</sup>  
105 Ageing populations place tremendous pressure on health-care systems.<sup>2</sup> The rate of  
106 ageing at an individual level is heterogeneous. An accurate quantification of the  
107 biological ageing process is significant for risk stratification and the delivery of  
108 tailored interventions.<sup>3</sup>

109

110 To date, several tissue-, cell-, molecular-, and imaging-based biomarkers have been  
111 developed, such as DNA-methylation status, brain age and three dimensional (3D)  
112 facial age.<sup>4-7</sup> While the invasiveness of cellular and molecular ageing biomarkers,  
113 high cost and time-consuming nature of neuroimaging and facial ages, and ethical and  
114 privacy concerns of facial imaging, have limited their utilities.

115

116 The retina is considered a window to the whole body.<sup>8-12</sup> In addition, the retina is  
117 amenable to rapid, non-invasive, and cost-effective assessments. The advent of deep  
118 learning (DL) has greatly improved the accuracy of image classification and  
119 processing. Recent studies have demonstrated successful applications of DL models  
120 in the prediction of age using clinical images.<sup>5,6,13</sup> Taken together, this raises the  
121 potential that biological age can be predicted by applying DL to retinal images. For  
122 optimal utility, viable biomarkers of ageing must also relate to the risk of age-related  
123 morbidity and mortality.

124

125 We therefore developed a DL model that can predict age from fundus images, known  
126 as retinal age. Using a large population-based sample of middle-aged and elderly  
127 adults, we investigated the association between retinal age gap, defined as the  
128 difference between retinal age and chronological age, and all-cause mortality.

129

## 130 **Methods**

### 131 **Study population**

132 The UK Biobank is a large-scale, population-based cohort of more than 500,000 UK  
133 residents aged 40-69 years. Participants were recruited between 2006 and 2010, with  
134 all participants completing comprehensive health-care questionnaires, detailed  
135 physical measurements, and biological sample collections. Health-related events were  
136 ascertained via data linkage to hospital admission records and mortality registry.  
137 Ophthalmic examinations were introduced in 2009. The overall study protocol and  
138 protocols for each test have been described in extensive details elsewhere.<sup>14</sup>

139

140 The National Information Governance Board for Health and Social Care and the NHS  
141 North West Multicenter Research Ethics Committee approved the UK Biobank study  
142 (11/NW/0382) in accordance with the principles of the Declaration of Helsinki, with  
143 all participants providing informed consent. The present analysis operates under UK  
144 Biobank application 62525.

145

#### 146 **Fundus photography**

147 Ophthalmic measurements including LogMAR visual acuity, autorefractometry and  
148 keratometry (Tomey RC5000, Tomey GmbH, Nuremberg, Germany), intraocular  
149 pressure (IOP, Ocular Response Analyzer, Reichert, New York, USA), and paired  
150 retinal fundus and optical coherence tomography imaging (OCT, Topcon 3D OCT  
151 1000 Mk2, Topcon Corp, Tokyo, Japan) were collected. A 45-degree non-mydratric  
152 and non-stereo fundus image centered to include both the optic disc and macula was  
153 taken for each eye. A total of 131,238 images from 66,500 participants were obtained  
154 from the UK Biobank study, among which 80,170 images from 46,970 participants  
155 passed the image quality check.

156

#### 157 **Deep learning model for age prediction**

158 To build the DL model for age prediction, participants from the UK Biobank study  
159 alive on 28<sup>th</sup> February 2018 ( $N_{\text{subj}}=46,970$ ) were randomly split into three datasets –  
160 training ( $N_{\text{subj}}=27,424$ , 60% of participants), validation ( $N_{\text{subj}}=9,142$ , 20%), and test  
161 ( $N_{\text{subj}}=9,142$ , 20%). For the training and validation datasets, fundus images from both

162 eyes (if available) were used to maximise the volume of data available ( $N_{img}=46,834$   
163 and 15,612 respectively). For the test dataset, fundus images from right eyes were  
164 selected for primary analyses ( $N_{subj}=8,212$ ), while fundus images from left eyes were  
165 selected for sensitivity analyses.

166

167 The development and validation of the DL model for age prediction are outlined in  
168 Figure 1. Briefly, all fundus images were preprocessed by subtracting average color,<sup>15</sup>  
169 resized to a resolution of 299\*299 pixels, and pixel values rescaled to 0~1. After  
170 preprocessing, images were fed into a DL model using a Xception architecture.  
171 During training, data augmentation was performed using random horizontal or  
172 vertical flips and the algorithm optimised using stochastic gradient descent. To  
173 prevent overfitting, we implemented a dropout of 0.5, and carried out early stopping  
174 when validation performance did not improve for 10 epochs. The selection of DL  
175 models was based on performance in the validation set. The performance of the DL  
176 model, including mean absolute error (MAE) and correlation between predicted  
177 retinal age and chronological age, was calculated. We then retrieved attention maps  
178 from the DL models using guided Grad-CAM,<sup>16</sup> which highlights pixels in the input  
179 image based on their contributions to the final evaluation.

180

### 181 **Retinal age gap definition**

182 The difference between retinal age predicted by the DL model and chronological age  
183 was defined as the retinal age gap. A positive retinal age gap indicated an ‘older’  
184 appearing retina, while a negative retinal age gap indicated a ‘younger’ appearing  
185 retina.

186

### 187 **Mortality ascertainment**

188 Mortality status and date of death were ascertained via data linkage to the National  
189 Health Service central mortality registry. Participants who had died from all causes  
190 during the follow-up period ( $N_{subj}=1,117$ ) were included in the death dataset. Duration  
191 of follow-up for each participant (person-year) was calculated as the length of time



192 between baseline age and date of death, loss to follow-up, or complete follow-up (28<sup>th</sup>  
193 February 2018), whichever came first.

194

### 195 **Covariates**

196 Factors previously known to be associated with mortality<sup>17</sup> were included as potential  
197 confounders in the present analyses. These variables included baseline age, sex,  
198 ethnicity (recorded as white and non-white), Townsend deprivation indices (an  
199 area-based proxy measure for socioeconomic status), education attainment (recorded  
200 as college or university degree, and others), smoking status (recorded as  
201 current/previous and never), physical activity level (recorded as above  
202 moderate/vigorous/walking recommendation and not), general health status (recorded  
203 as excellent/good and fair/poor), and comorbidities (obesity, diabetes mellitus,  
204 hypertension, history of heart diseases, and history of stroke).

205

206 Body mass index (BMI) was calculated as body weight in kilograms divided by  
207 height squared. Obesity was defined as BMI  $\geq 30$  kg/m<sup>2</sup>. Diabetes mellitus was  
208 defined as self-reported or doctor-diagnosed diabetes mellitus, the use of  
209 anti-hyperglycaemic medications or insulin, or a glycosylated haemoglobin level  
210 of  $\geq 6.5\%$ . Hypertension was defined as self-reported, or doctor-diagnosed  
211 hypertension, the use of antihypertensive drugs, an average systolic blood pressure of  
212 at least 130mmHg or an average diastolic blood pressure of at least 80mmHg.  
213 Self-reported history of angina and heart attack was used to classify history of heart  
214 diseases.

215

### 216 **Statistical analyses**

217 Descriptive statistics, including means and standard deviations (SDs), numbers and  
218 percentages, were used to report baseline characteristics of study participants. The  
219 retinal age gap was calculated for participants in the test and death datasets, and  
220 further used to explore the association between retinal age gap and mortality risk. Cox  
221 proportional hazards regression models considering retinal age gap as a continuous

222 linear term were fitted to estimate the effect of a one-year increase in retinal age gap  
223 on mortality risk. We then investigated associations between retinal age gaps at  
224 different quantiles with mortality. In addition, a restricted cubic spline analyses of  
225 possible non-linear associations between retinal age gap and mortality status was  
226 performed, with 5 knots placed at equal percentiles of the retinal age gap, and retinal  
227 age gap of zero years used as the reference value. We adjusted Cox models for the  
228 following covariates – baseline age, sex, ethnicity, and Townsend deprivation indices  
229 (model I); additional educational level, obesity, smoking status, physical activity level,  
230 diabetes mellitus, hypertension, general health status, history of heart diseases, and  
231 history of stroke (model II).

232

233 The proportional hazards assumption for each variable included in the Cox  
234 proportional hazards regression models were graphically assessed. All variables were  
235 found to meet the assumption. A two-sided p value of  $< 0.05$  indicated statistical  
236 significance. Analyses were performed using R (version 3.3.0, R Foundation for  
237 Statistical Computing, [www.R-project.org](http://www.R-project.org), Vienna, Austria) and Stata (version 13,  
238 StataCorp, Texas, USA).

239

#### 240 **Role of the funding source**

241 The funders had no role in study design, data collection, data analyses, data  
242 interpretation, preparation of the manuscript, and decision to publish. The  
243 corresponding author had full access to all data and final responsibility for the  
244 decision to submit for publication.

245

#### 246 **Results**

##### 247 **Study sample**

248 The study population characteristics are described in Table 1. The DL model was  
249 trained and validated on subsets of participants with mean ages of  $55.6 \pm 8.21$  and  
250  $55.7 \pm 8.19$  years; and with 55.9% and 55.2% female, respectively. For the test and

251 death datasets, participants had mean ages of  $55.5 \pm 8.22$  and  $61.0 \pm 6.67$  years; and  
252 were 55.1% and 42.2% female, respectively.

253

### 254 **Deep learning model performance for age prediction**

255 Figure 2A shows the performance of the DL model on the test dataset. The trained DL  
256 model was able to achieve a strong correlation of 0.83 ( $P < 0.001$ ) between predicted  
257 retinal age and chronological age, with an overall MAE of 3.50 years. Two  
258 representative examples of fundus images with corresponding attention maps for age  
259 prediction are shown in Figure 3. Regions around retinal vessels are highlighted by  
260 the DL model for age prediction.

261

### 262 **Retinal age gap**

263 The distribution of the retinal age gap followed a nearly normal distribution (Figure  
264 2B). The mean (SD) and median (interquartile range) of the retinal age gap were -0.16  
265 (4.54) and -0.19 (-2.99, 2.60). The proportions of fast agers with retinal age gaps more  
266 than 3, 5 and 10 years were 22.0%, 12.0% and 1.67%, respectively.

267

### 268 **Retinal age gap and mortality**

269 Considering linear effects only and following adjustment for all confounding factors,  
270 each one-year increase in retinal age gap was associated with a 2% increase in  
271 mortality risk (hazard ratio [HR] = 1.02, 95% confidence interval [CI]: 1.00-1.04,  $P =$   
272 0.021; Table 2). Compared to participants with retinal age gaps in the lowest quantile,  
273 mortality risk was comparable for those in the second and the third quantiles (HR =  
274 1.05, 95% CI: 0.88-1.24,  $P = 0.602$ ; HR = 0.89, 95% CI: 0.73-1.09,  $P = 0.261$ ,  
275 respectively). Mortality risk was significantly increased for participants with retinal  
276 age gaps in the fourth quantile (HR = 1.33, 95% CI: 1.06-1.67,  $P = 0.012$ ; Table 2).

277

278 Allowing for non-linearity, Figure 5 illustrates the estimated association between  
279 retinal age gap and mortality risk. Evidence of an overall and non-linear association  
280 between retinal age gap and mortality risk was observed ( $P_{\text{overall}} < 0.001$ ;  $P_{\text{non-linear}} =$

281 0.001). Higher retinal age gaps were associated with substantially increased risks of  
282 mortality, but only if the retinal age gap exceeded 3.71 years.

283

#### 284 **Sensitivity analyses**

285 In order to verify the robustness of our findings, fundus images from left eyes were  
286 chosen for the statistical analyses. Similar results were observed for left eyes (data not  
287 shown).

288

#### 289 **Discussion**

290 Using a large population-based sample of middle-aged and elderly adults, we  
291 developed a DL model that could predict age from fundus images with high accuracy.  
292 Further, we found that the retinal age gap, defined as the difference between predicted  
293 retinal age and chronological age, independently predicted the risk of mortality. Our  
294 findings have demonstrated that retinal age is a robust biomarker of ageing that can  
295 predict all-cause mortality.

296

297 To the best of our knowledge, this is the first study that has proposed retinal age as a  
298 biomarker of ageing. Our trained DL model achieved excellent performance with a  
299 MAE of 3.5, outperforming most existing biomarkers in the prediction of age.  
300 Previous studies have demonstrated MAEs of 3.3-5.2 years for DNA methylation  
301 clock,<sup>18,19</sup> 5.5-5.9 years MAEs for blood profiles,<sup>20,21</sup> and 6.2-7.8 years MAEs for the  
302 transcriptome ageing clock.<sup>22,23</sup> Neuroimaging and 3D facial imaging have achieved  
303 accurate performances in age prediction with MAEs between 4.3 and 7.3,<sup>7,24</sup> and 2.8  
304 and 6.4 years,<sup>6,25</sup> respectively. Despite these reasonable accuracies, the invasiveness  
305 of cellular and molecular ageing biomarkers, high cost and time-consuming nature of  
306 neuroimaging and 3D facial ages, and ethical and privacy concerns of facial imaging,  
307 have limited their utilities. In addition to excellent performance in age prediction,  
308 determining retinal age using fundus images is fast, safe, cost-effective and  
309 user-friendly, thus offering great potential for use in a large number of people.

310

311 Beyond age prediction, our study has extended the application of retinal age to the  
312 prediction of survival. Our novel findings have determined that the retinal age gap is  
313 an independent predictor of increased mortality risk, further suggesting that retinal  
314 age is a clinically significant biomarker of ageing. The relevance of retinal age for  
315 general health is intuitive, given that the retina is the only organ that is amenable to *in*  
316 *vivo* visualisation of the microvasculature and neural tissue. The retina offers a unique,  
317 accessible ‘window’ to evaluate underlying pathological processes of systemic  
318 vascular and neurological diseases that are associated with increased risks of mortality.  
319 This hypothesis is supported by previous studies which have suggested that retinal  
320 imaging contains information about cardiovascular risk factors,<sup>26</sup> chronic kidney  
321 diseases<sup>27</sup> and systemic biomarkers.<sup>28</sup> In addition, this hypothesis is also consistent  
322 with previously reported qualitative and quantitative studies that have found that  
323 ocular imaging measures (e.g. retinal-vessel calibre) and retinal diseases (e.g.  
324 glaucoma) are significantly associated with mortality.<sup>29,30</sup> This body of work supports  
325 the hypothesis that the retina plays an important role in the ageing process and is  
326 sensitive to the cumulative damages of ageing which increase the mortality risk.

327

328 Our findings have several important clinical implications. Firstly, the fast,  
329 non-invasive, and cost-effective nature of fundus imaging enables it to be an  
330 accessible screening tool to identify individuals at an increased risk of mortality. This  
331 risk stratification will assist tailored health-care decision-making, as well as targeting  
332 and monitoring of interventions. Given the rising burden of non-communicable  
333 diseases and population ageing globally, the early identification and delivery of  
334 personalised health-care may have tremendous public health benefits. Further, the  
335 recent development of smartphone-based retinal cameras, together with the  
336 integration of DL algorithms, may in the future provide point-of-care assessments of  
337 ageing and improve accessibility to tailored risk assessments. Secondly, the capability  
338 to use fundus images in predicting ageing may improve potential health benefits of  
339 eye disease screening, beyond the diagnosis of sight-threatening eye diseases. This  
340 may improve the health economic cost-effectiveness of programs such as diabetic

341 retinopathy screening, thus increasing the impact and access to eye disease screening  
342 programs.

343

344 The large-scale sample size, long-term follow-up, standardised protocol in capturing  
345 fundus images, validity of mortality data, and adjustment for a wide range of  
346 confounding factors in the statistical models of this study support the robustness of  
347 our findings. Despite these promising results, our study has several limitations. Firstly,  
348 these current analyses are limited by retinal images that were captured at a particular  
349 cross-section in time, with trajectories in retinal ageing potentially being a better  
350 indicator of mortality. Secondly, participants involved in the UK Biobank study were  
351 volunteers, who might not be representative of the population from which they were  
352 drawn. Of note, the potential healthy effect might underestimate effects of retinal age  
353 gap on mortality, as individuals with extremely poor health were less likely to  
354 participate in this study. Thirdly, the lack of external datasets might limit the  
355 generalisability of our DL algorithms and findings. Lastly, we were unable to fully  
356 exclude the possibility of residual confounders between retinal age gap and mortality.

357

### 358 **Conclusion**

359 In summary, we have developed a DL algorithm that can detect footprints of ageing in  
360 fundus images and predict age with high accuracy. Further, we have been the first to  
361 demonstrate that the retinal age gap is significantly associated with an increased risk  
362 of mortality. Our findings suggest that retinal age is a robust biomarker of ageing.  
363 Lastly, our work calls for future research into applications of the retinal age gap, and  
364 whether retinal age can be used to better understand processes underpinning ageing.

365

### 366 **Contributors**

367 ZZ and SD conceptualised and designed the study with WW, HM, and YX. ZZ and  
368 SD did the literature search and wrote the first draft of the manuscript. SD, PG and  
369 MW did the deep learning modelling, ZZ, SX and WW did the statistical analysis.

370 WW, HM and YX had full access to all of the data. All authors commented on the  
371 manuscript.

372

### 373 **Declaration of interests**

374 We declare no competing interests.

375

### 376 **Acknowledgments**

377 This present work was supported by the NHMRC Investigator Grant (APP1175405),  
378 Fundamental Research Funds of the State Key Laboratory of Ophthalmology,  
379 National Natural Science Foundation of China (82000901), Project of Investigation  
380 on Health Status of Employees in Financial Industry in Guangzhou, China  
381 (Z012014075), Science and Technology Program of Guangzhou, China  
382 (202002020049). Professor Mingguang He receives support from the University of  
383 Melbourne through its Research Accelerator Program and the CERA Foundation. The  
384 Centre for Eye Research Australia (CERA) receives Operational Infrastructure  
385 Support from the Victorian State Government.

386

### 387 **References:**

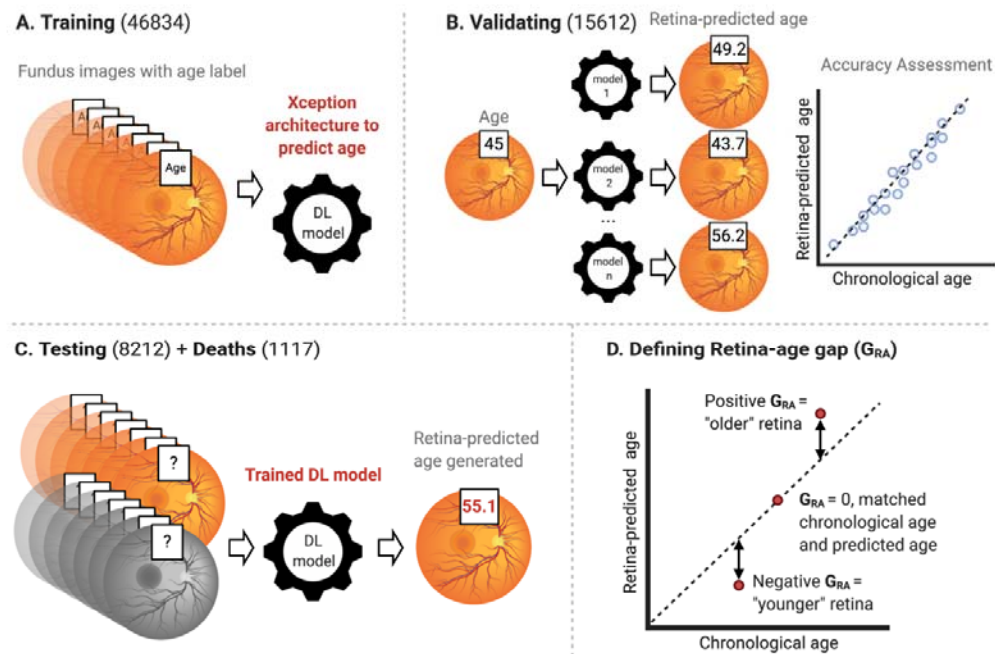
- 388 1. United Nations, Department of Economic and Social Affairs, Population Division  
389 (2017). World Population Ageing 2017 Available at:  
390 [https://www.un.org/en/development/desa/population/publications/pdf/ageing/WPA20](https://www.un.org/en/development/desa/population/publications/pdf/ageing/WPA2017_Highlights.pdf)  
391 [17\\_Highlights.pdf](https://www.un.org/en/development/desa/population/publications/pdf/ageing/WPA2017_Highlights.pdf) [Accessed November 28, 2020].
- 392 2. MacNee W, Rabinovich RA, Choudhury G. Ageing and the border between  
393 health and disease. *Eur Respir J* 2014; **44**(5): 1332-52.
- 394 3. Lopez-Otin C, Blasco MA, Partridge L, Serrano M, Kroemer G. The hallmarks of  
395 aging. *Cell* 2013; **153**(6): 1194-217.
- 396 4. Horvath S, Raj K. DNA methylation-based biomarkers and the epigenetic clock  
397 theory of ageing. *Nat Rev Genet* 2018; **19**(6): 371-84.
- 398 5. Wang J, Knol MJ, Tiulpin A, et al. Gray Matter Age Prediction as a Biomarker  
399 for Risk of Dementia. *Proc Natl Acad Sci U S A* 2019; **116**(42): 21213-8.
- 400 6. Xia X, Chen X, Wu G, et al. Three-dimensional facial-image analysis to predict  
401 heterogeneity of the human ageing rate and the impact of lifestyle. *Nat Metab* 2020;  
402 **2**(9): 946-57.
- 403 7. Cole JH, Ritchie SJ, Bastin ME, et al. Brain age predicts mortality. *Mol*  
404 *Psychiatry* 2018; **23**(5): 1385-92.



- 405 8. Flammer J, Konieczka K, Bruno RM, Virdis A, Flammer AJ, Taddei S. The eye  
406 and the heart. *Eur Heart J* 2013; **34**(17): 1270-8.
- 407 9. Wong CW, Wong TY, Cheng CY, Sabanayagam C. Kidney and eye diseases:  
408 common risk factors, etiological mechanisms, and pathways. *Kidney Int* 2014; **85**(6):  
409 1290-302.
- 410 10. London A, Benhar I, Schwartz M. The retina as a window to the brain-from eye  
411 research to CNS disorders. *Nature reviews Neurology* 2013; **9**(1): 44-53.
- 412 11. Pavkov ME, Harding JL, Chou CF, Saaddine JB. Prevalence of Diabetic  
413 Retinopathy and Associated Mortality Among Diabetic Adults With and Without  
414 Chronic Kidney Disease. *Am J Ophthalmol* 2019; **198**: 200-8.
- 415 12. Kawasaki R, Xie J, Cheung N, et al. Retinal microvascular signs and risk of  
416 stroke: the Multi-Ethnic Study of Atherosclerosis (MESA). *Stroke* 2012; **43**(12):  
417 3245-51.
- 418 13. Cole JH, Franke K. Predicting Age Using Neuroimaging: Innovative Brain  
419 Ageing Biomarkers. *Trends Neurosci* 2017; **40**(12): 681-90.
- 420 14. Sudlow C, Gallacher J, Allen N, et al. UK biobank: an open access resource for  
421 identifying the causes of a wide range of complex diseases of middle and old age.  
422 *PLoS Med* 2015; **12**(3): e1001779.
- 423 15. Ebner M. Color constancy based on local space average color. *Machine Vision  
424 and Applications* 2008; **20**(5): 283-301.
- 425 16. Xu K, Ba J, Kiros R, et al. Show, attend and tell: neural image caption generation  
426 with visual attention. arXiv. 2016; (published online April 19.) (preprint)  
427 <https://arxiv.org/abs/1502.03044> [Accessed November 28, 2020].
- 428 17. Ganna A, Ingelsson E. 5 year mortality predictors in 498,103 UK Biobank  
429 participants: a prospective population-based study. *Lancet* 2015; **386**(9993): 533-40.
- 430 18. Weidner CI, Lin Q, Koch CM, et al. Aging of blood can be tracked by DNA  
431 methylation changes at just three CpG sites. *Genome Biol* 2014; **15**(2): R24.
- 432 19. Hannum G, Guinney J, Zhao L, et al. Genome-wide methylation profiles reveal  
433 quantitative views of human aging rates. *Mol Cell* 2013; **49**(2): 359-67.
- 434 20. Putin E, Mamoshina P, Aliper A, et al. Deep biomarkers of human aging:  
435 Application of deep neural networks to biomarker development. *Aging (Albany NY)*  
436 2016; **8**(5): 1021-33.
- 437 21. Mamoshina P, Kochetov K, Putin E, et al. Population Specific Biomarkers of  
438 Human Aging: A Big Data Study Using South Korean, Canadian, and Eastern  
439 European Patient Populations. *J Gerontol A Biol Sci Med Sci* 2018; **73**(11): 1482-90.
- 440 22. Peters MJ, Joehanes R, Pilling LC, et al. The transcriptional landscape of age in  
441 human peripheral blood. *Nat Commun* 2015; **6**: 8570.
- 442 23. Fleischer JG, Schulte R, Tsai HH, et al. Predicting age from the transcriptome of  
443 human dermal fibroblasts. *Genome Biol* 2018; **19**(1): 221.
- 444 24. Liem F, Varoquaux G, Kynast J, et al. Predicting brain-age from multimodal  
445 imaging data captures cognitive impairment. *Neuroimage* 2017; **148**: 179-88.
- 446 25. Chen W, Qian W, Wu G, et al. Three-dimensional human facial morphologies as  
447 robust aging markers. *Cell Res* 2015; **25**(5): 574-87.



- 448 26. Poplin R, Varadarajan AV, Blumer K, et al. Prediction of cardiovascular risk  
449 factors from retinal fundus photographs via deep learning. *Nat Biomed Eng* 2018; **2**(3):  
450 158-64.
- 451 27. Sabanayagam C, Xu D, Ting DSW, et al. A deep learning algorithm to detect  
452 chronic kidney disease from retinal photographs in community-based populations.  
453 *The Lancet Digital Health* 2020; **2**(6): e295-e302.
- 454 28. Rim TH, Lee G, Kim Y, et al. Prediction of systemic biomarkers from retinal  
455 photographs: development and validation of deep-learning algorithms. *The Lancet*  
456 *Digital Health* 2020; **2**(10): e526-e36.
- 457 29. Wang JJ, Liew G, Klein R, et al. Retinal vessel diameter and cardiovascular  
458 mortality: pooled data analysis from two older populations. *Eur Heart J* 2007; **28**(16):  
459 1984-92.
- 460 30. Khanna RC, Murthy GVS, Giridhar P, et al. Glaucoma-associated long-term  
461 mortality in a rural cohort from India: the Andhra Pradesh Eye Disease Study. *Br J*  
462 *Ophthalmol* 2018; **102**(11): 1477-82.

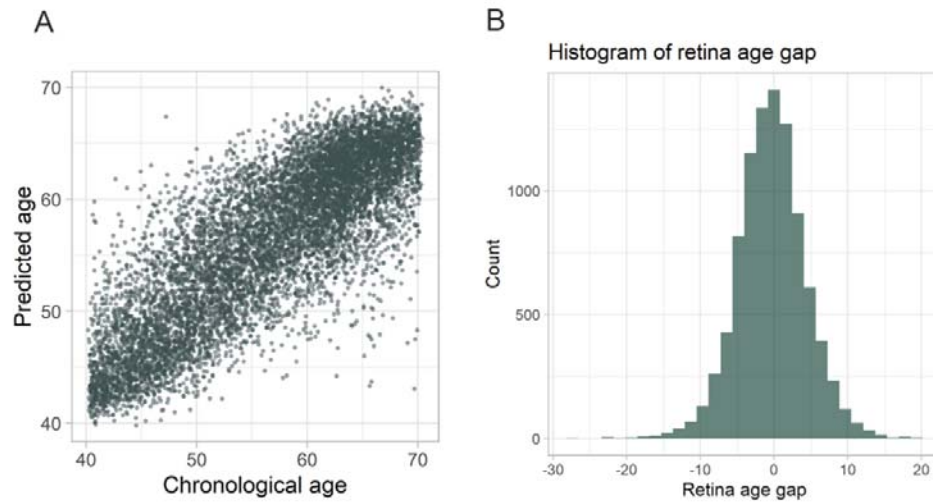


463

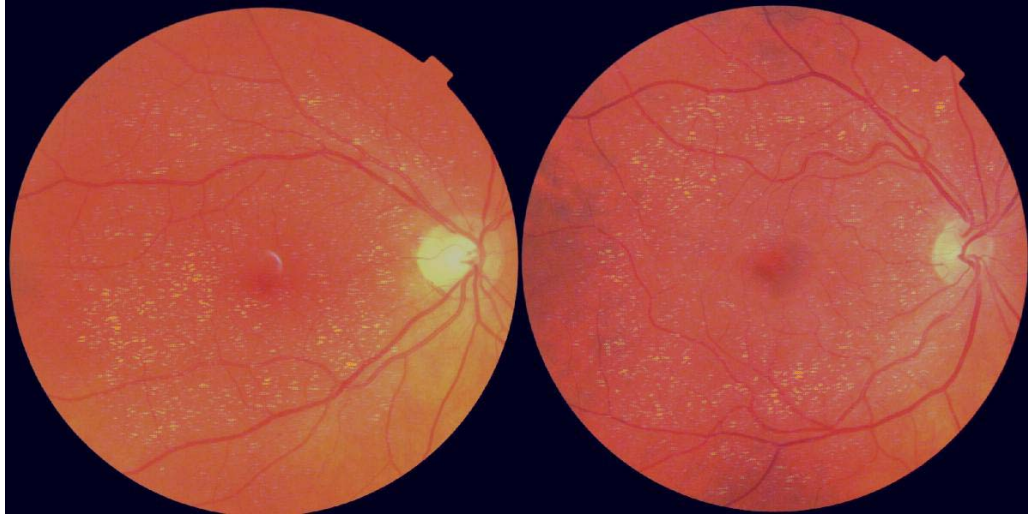
464 **Figure 1. Overview of the study workflow**

465 **Figure legend:** Figures showing the study workflow used to calculate retinal age gaps  
466 from fundus images. Fundus images were preprocessed and fed into the DL model. (A)  
467 The Xception architecture was used to train fundus images, with chronological age as  
468 the outcome variable; (B) The selection of DL models was based on performance in  
469 the validation set, where predicted retinal and chronological ages were compared; (C)  
470 The selected trained DL model was then applied to make retinal age predictions from

471 fundus images for participants in the test and death datasets; (D) The difference  
472 between predicted retinal age and chronological age was defined as the retinal age gap.  
473 A positive retinal age gap indicated an ‘older’ appearing retina, while a negative  
474 retinal age gap indicated a ‘younger’ appearing retina. This figure was created with  
475 BioRender.com.



476  
477 **Figure 2. Performance of the deep learning model on the test dataset**  
478 **Figure legend:** (A) Scatterplot depicting correlation of predicted age (y-axis) with  
479 chronological age (x-axis); (B) Histogram showing the nearly normal distribution of  
480 the retinal age gap.  
481



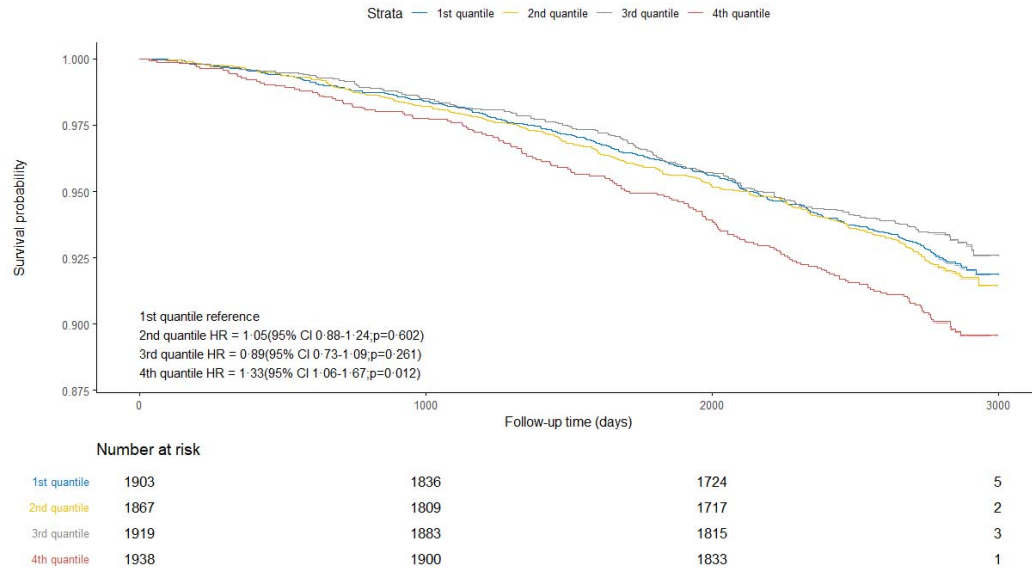
482

483 **Figure 3. Attention maps for age prediction**

484 **Figure legend:** Figures showing representative examples of fundus images with  
485 corresponding attention maps for age prediction. Regions highlighted with a brighter  
486 colour indicate areas that are used by the DL model for age prediction. Regions  
487 around the retinal vessels are highlighted.

488

It is made available under a [CC-BY-NC-ND 4.0 International license](https://creativecommons.org/licenses/by-nc-nd/4.0/) .



489

490 **Figure 4. Adjusted survival curves for mortality risk by retinal age gap quantiles**

491 **Figure legend:** Mortality risk is shown over time for participants in different retinal

492 age gap quantiles. Lower quantiles corresponded to participants who had

493 chronological ages greater than predicted retinal age, whereas higher quantiles

494 corresponded to those with chronological ages lower than predicted retinal age. Plots

495 were based on Cox proportional hazards regression models, adjusted for age, sex,

496 ethnicity, Townsend deprivation indices, educational level, obesity, smoking status,

497 physical activity level, diabetes mellitus, hypertension, general health status, history

498 of heart diseases, and history of stroke. Compared to participants with retinal age gaps

499 in the lowest quantile, mortality risk was comparable for those in the second and the

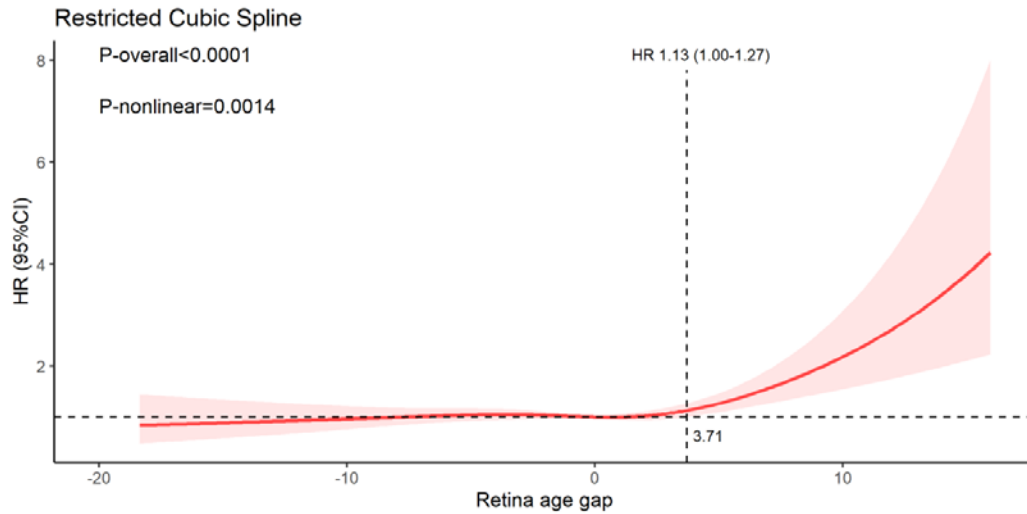
500 third quantiles (hazard ratio [HR] = 1.05, 95% confidence interval [CI]: 0.88-1.24, P

501 = 0.602; HR = 0.89, 95% CI: 0.73-1.09, P = 0.261, respectively). Mortality risk was

502 significantly increased for participants with retinal age gaps in the fourth quantile (HR

503 = 1.33, 95% CI: 1.06-1.67, P=0.012).

504



505

506 **Figure 5. Association between retina age gap and mortality risk, allowing for**  
507 **non-linear effects**

508 **Figure legend:** The reference retinal age gap for this plot (with hazard ratio [HR]  
509 fixed as 1.0) was 0 years. The model was fitted with a restricted cubic spline for  
510 retinal age gap (knots placed at equal percentiles of retina age gap), adjusted for age,  
511 sex, ethnicity, Townsend deprivation indices, educational level, obesity, smoking  
512 status, physical activity level, diabetes mellitus, hypertension, general health status,  
513 history of heart diseases, and history of stroke. Evidence of an overall and non-linear  
514 association between retinal age gap and all-cause mortality was observed ( $P_{\text{overall}} <$   
515  $0.001$ ;  $P_{\text{non-linear}} = 0.001$ ). Higher retinal age gaps were associated with substantially  
516 increased risks of mortality, but only if the retinal age gap exceeded 3.71 years.  
517

518 **Table 1.** Characteristics of datasets derived from the UK Biobank study

	<b>Training</b> <sup>a</sup>	<b>Validation</b> <sup>a</sup>	<b>Test</b>	<b>Death</b>
N <sub>subj</sub>	27424	9142	8212	1117
N <sub>img</sub>	46834	15612	8212	1117
Mean age (mean±SD, yrs) <sup>b</sup>	55·6±8·21	55·7±8·19	55·5±8·22	61·0±6·67
Female, N (%) <sup>b</sup>	15,341 (55·9)	5,045 (55·2)	4,526 (55·1)	471 (42·2)
White ethnicity, N (%) <sup>b</sup>	25,400 (92·6)	8,468 (92·6)	7,618 (92·8)	1,035 (92·7)
Townsend index (mean±SD) <sup>b</sup>	-1·09±2·94	-1·10±2·96	-1·08±2·95	-0·73±3·12
College or university degree, N (%) <sup>b</sup>	9,981 (36·4)	3,344 (36·6)	3,035 (37·0)	299 (26·8)
Current/previous smoker, N (%) <sup>b</sup>	11,671 (42·8)	3,905 (43·0)	3,532 (43·1)	659 (59·4)
Above physical activity recommendation, N (%) <sup>b</sup>	18,746 (82·7)	6,219 (82·4)	5,682 (83·4)	681 (77·4)
Excellent/good health status, N (%) <sup>b</sup>	20,290 (74·5)	6,738 (74·0)	6,149 (75·2)	618 (55·8)
Obesity, N (%) <sup>b</sup>	6,239 (22·9)	2,112 (23·2)	1,840 (22·5)	312 (28·1)
Diabetes mellitus, N (%) <sup>b</sup>	1,332 (4·86)	443 (4·85)	428 (5·21)	133 (11·9)
Hypertension, N (%) <sup>b</sup>	19,632 (71·6)	6633 (72·6)	5,956 (72·5)	928 (83·1)
History of heart diseases, N (%) <sup>b</sup>	848 (3·09)	296 (3·24)	250 (3·04)	94 (8·42)
History of stroke, N (%) <sup>b</sup>	309 (1·13)	83 (0·91)	103 (1·25)	35 (3·13)

N<sub>subj</sub> = number of subjects; N<sub>img</sub> = number of images; yrs = years; SD = standard deviation.

<sup>a</sup> Selection of images of both eyes if available.

<sup>b</sup> Values are based on N<sub>subj</sub>.

520 **Table 2.** Association between retinal age gap with mortality using Cox proportional  
521 hazards regression models

Retinal age gap	N	Mean±SD (yrs)	Model I		Model II	
			HR (95% CI)	P value	HR (95% CI)	P value
Retinal age gap, per one age (yrs)	9,329	-0.31±4.59	<b>1.03 (1.01-1.05)</b>	<b>&lt;0.001</b>	<b>1.02 (1.00-1.04)</b>	<b>0.021</b>
Retinal age gap						
Quantile 1	2,333	-5.98±2.69	Reference	-	Reference	-
Quantile 2	2,332	-1.72±0.82	1.11 (0.96-1.29)	0.168	1.05 (0.88-1.24)	0.602
Quantile 3	2,332	1.01±0.81	0.96 (0.80-1.15)	0.666	0.89 (0.73-1.09)	0.261
Quantile 4	2,332	5.43±2.59	<b>1.46 (1.20-1.78)</b>	<b>&lt;0.001</b>	<b>1.33 (1.06-1.67)</b>	<b>0.012</b>

HR = hazard ratio; CI = confidence interval.

Model I adjusted for age, sex, ethnicity, and Townsend deprivation indices.

Model II adjusted for covariates in Model I + educational level, obesity, smoking status, physical activity level, diabetes mellitus, hypertension, general health status, history of heart diseases, and history of stroke.