

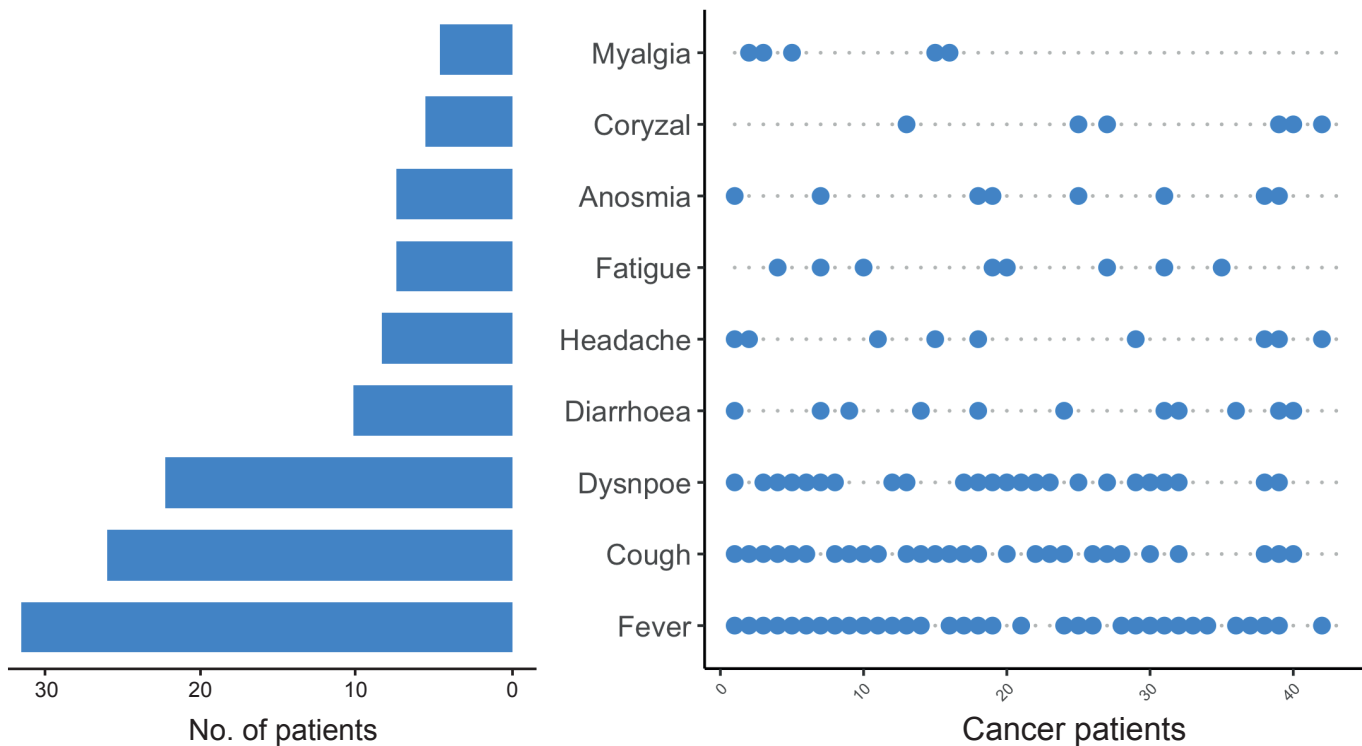
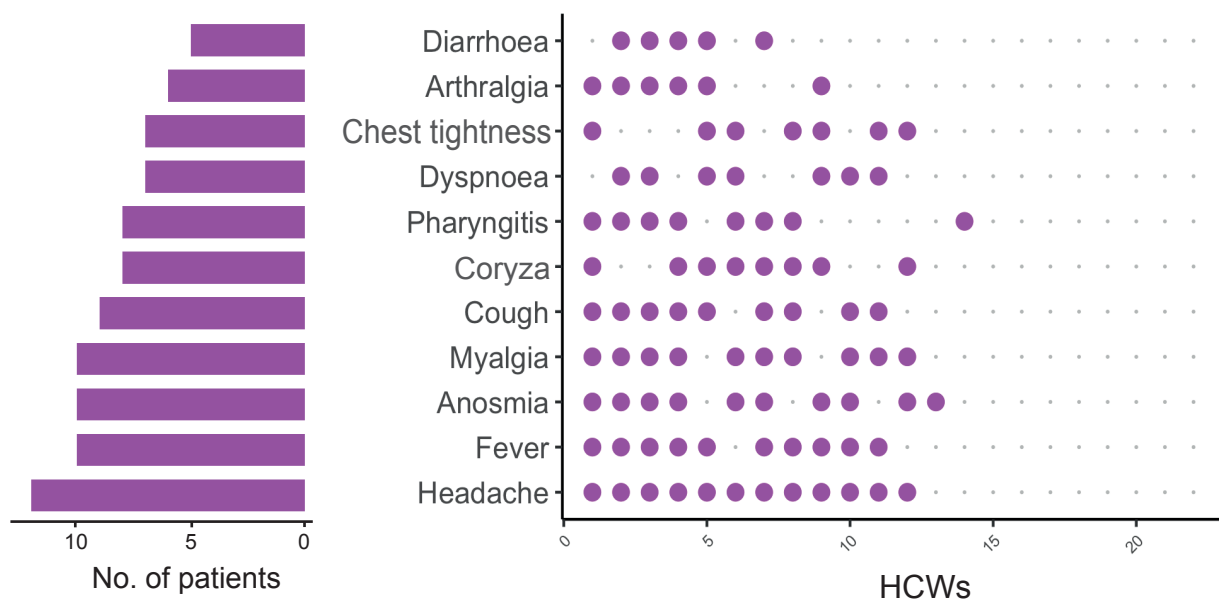
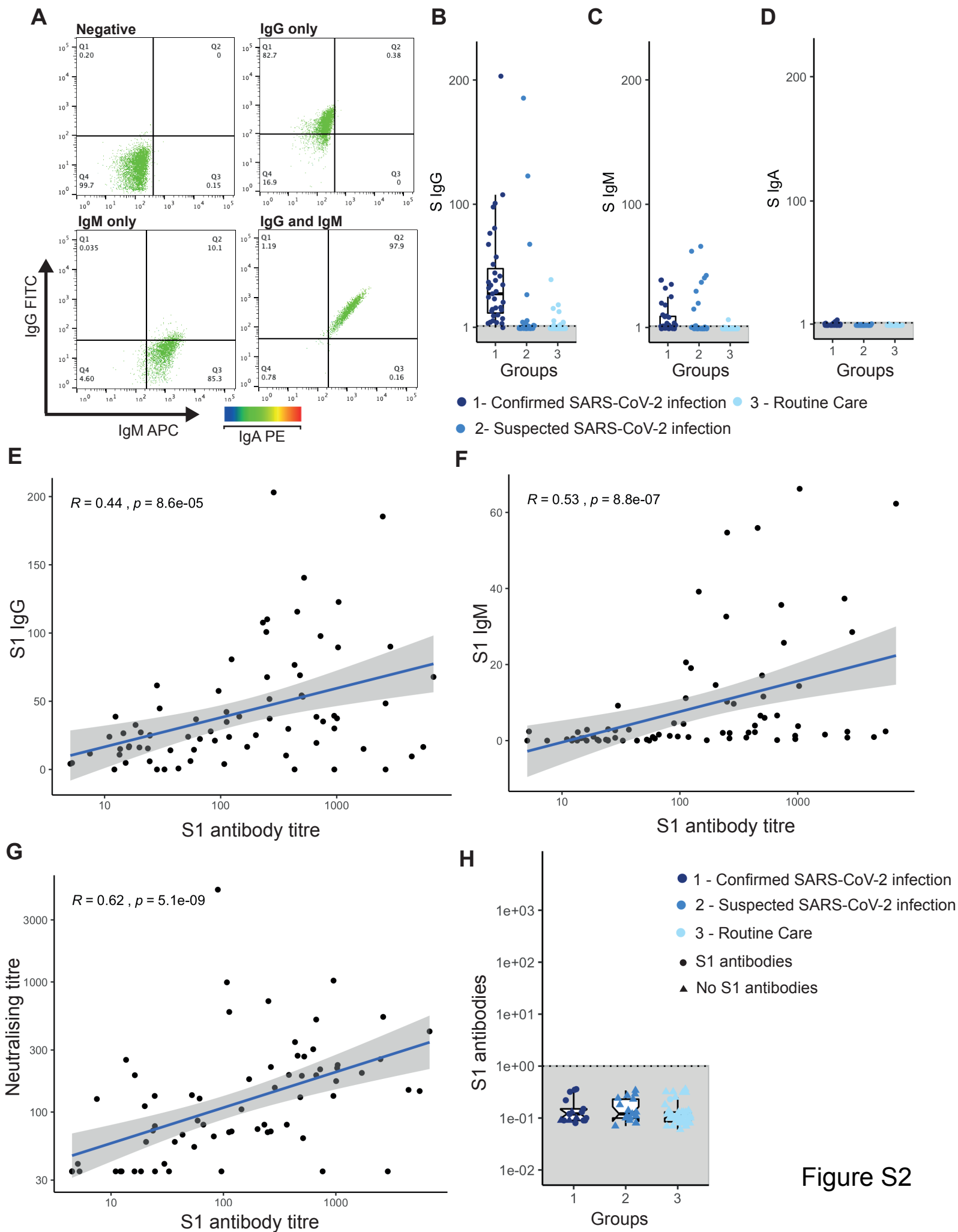
**A****B**

Figure S1



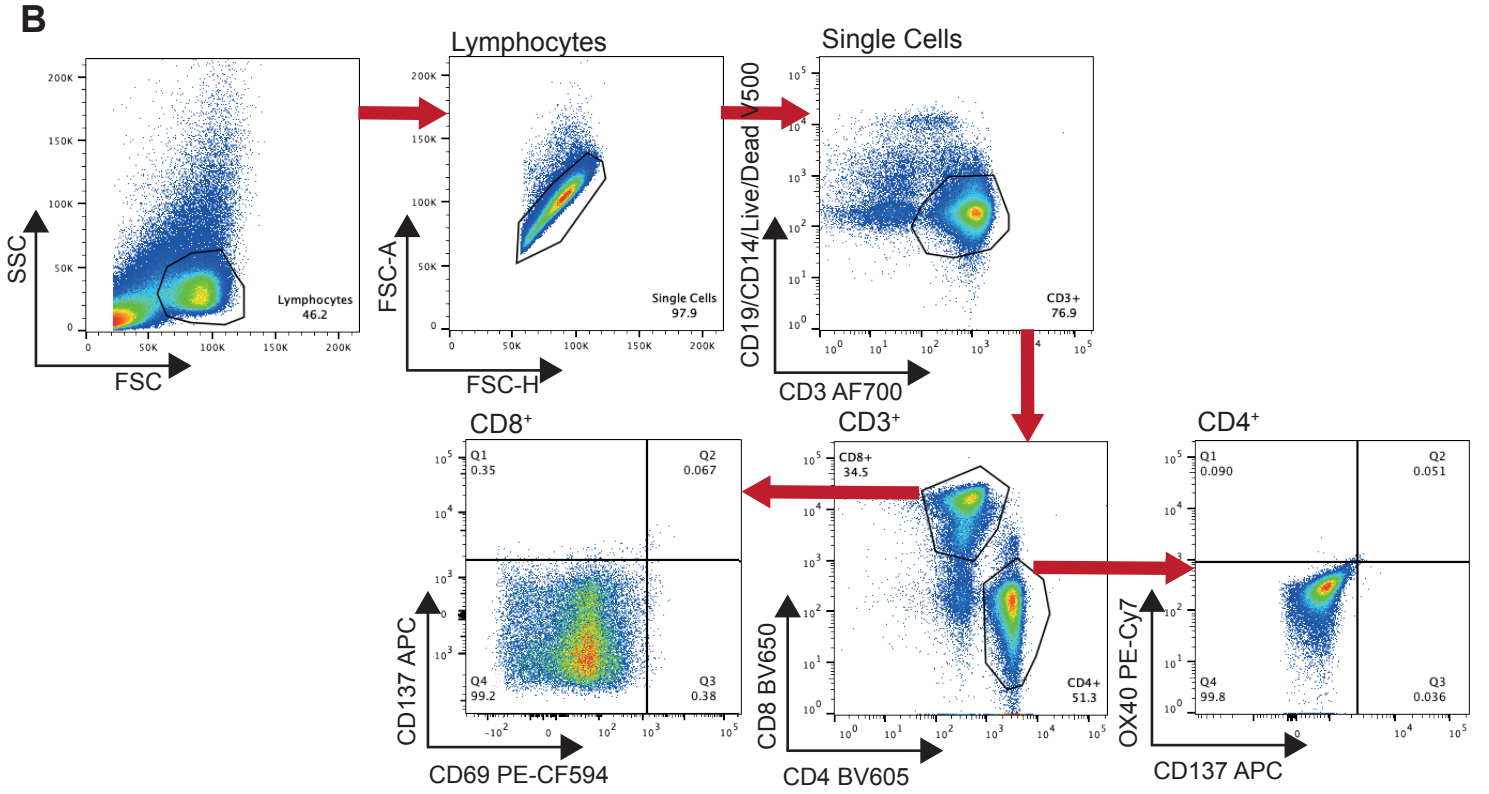
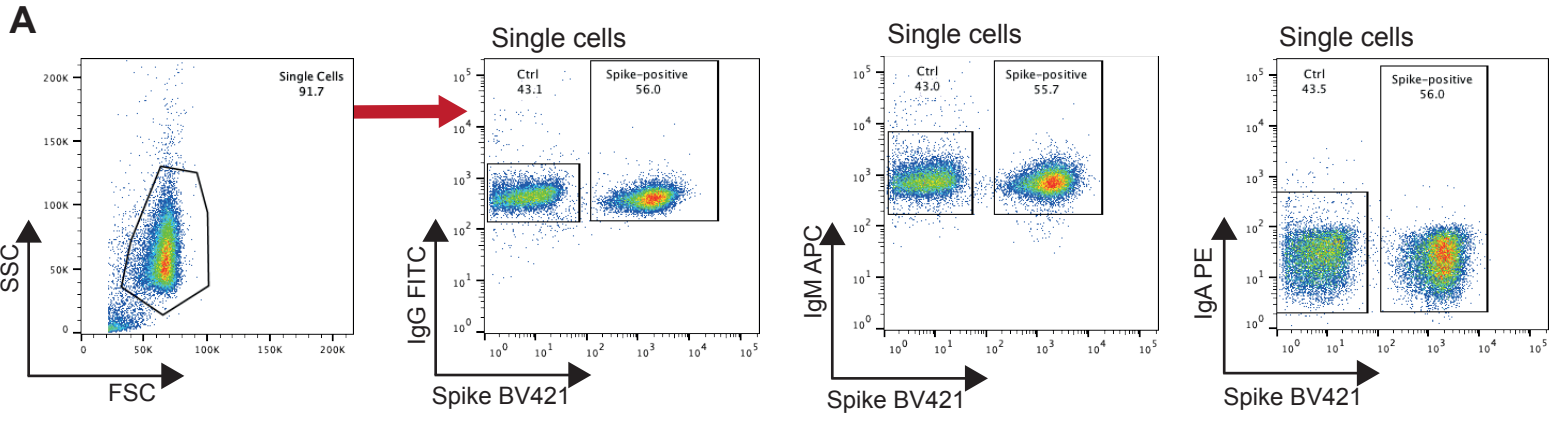


Figure S3

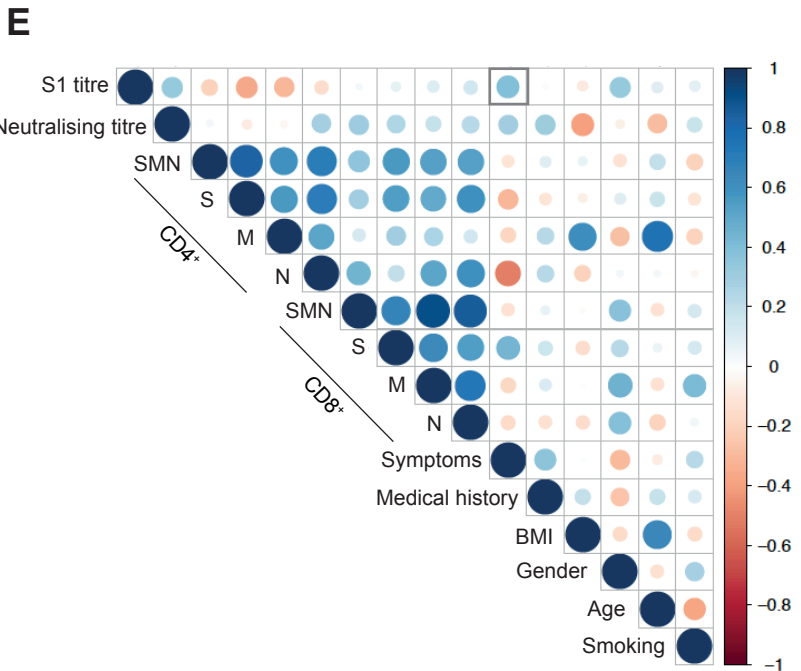
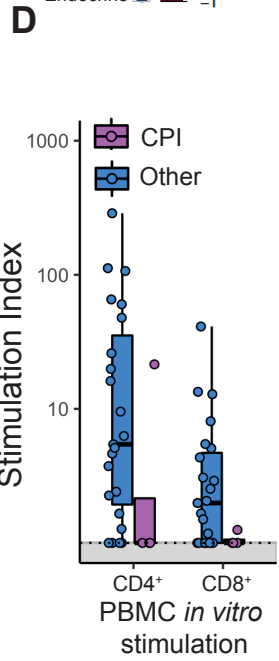
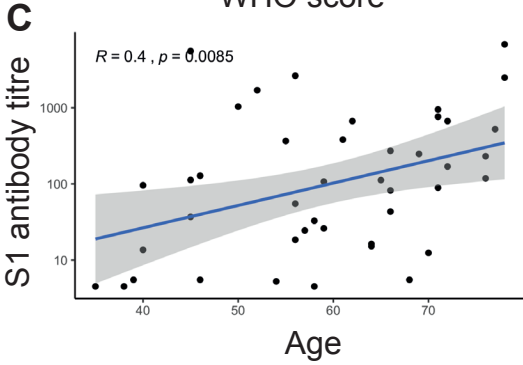
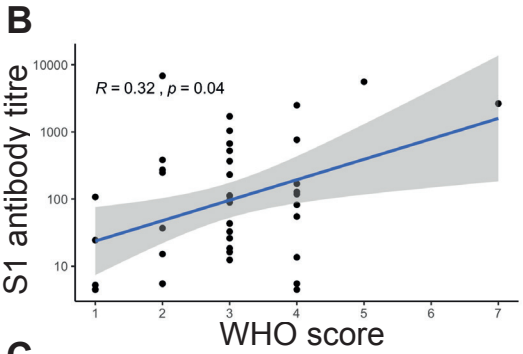
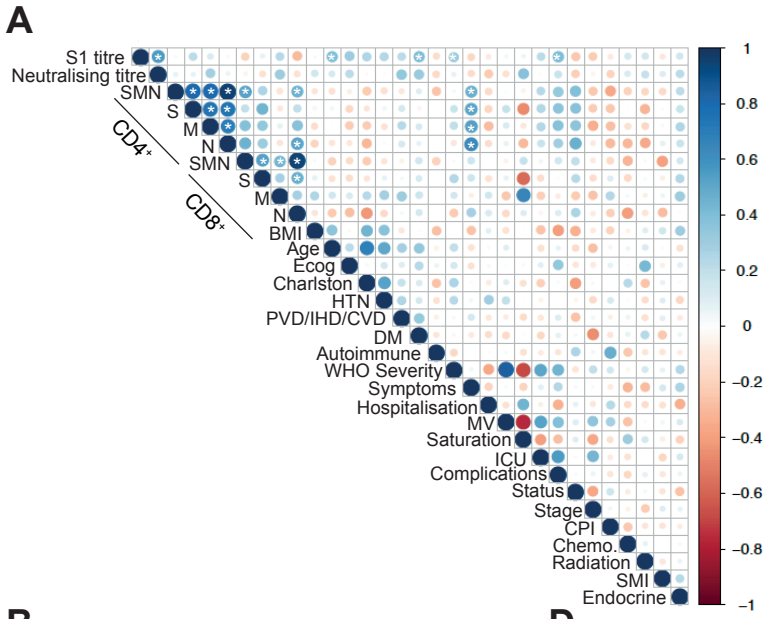


Figure S4

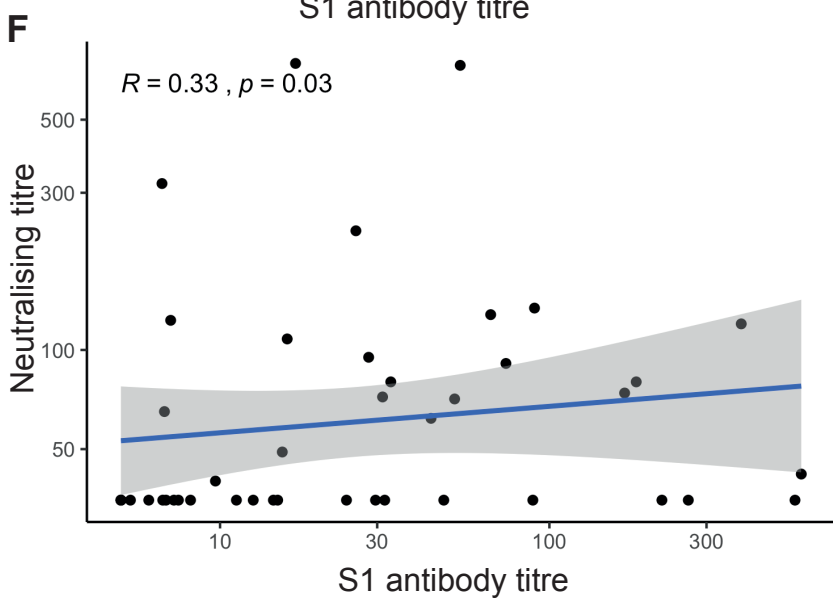
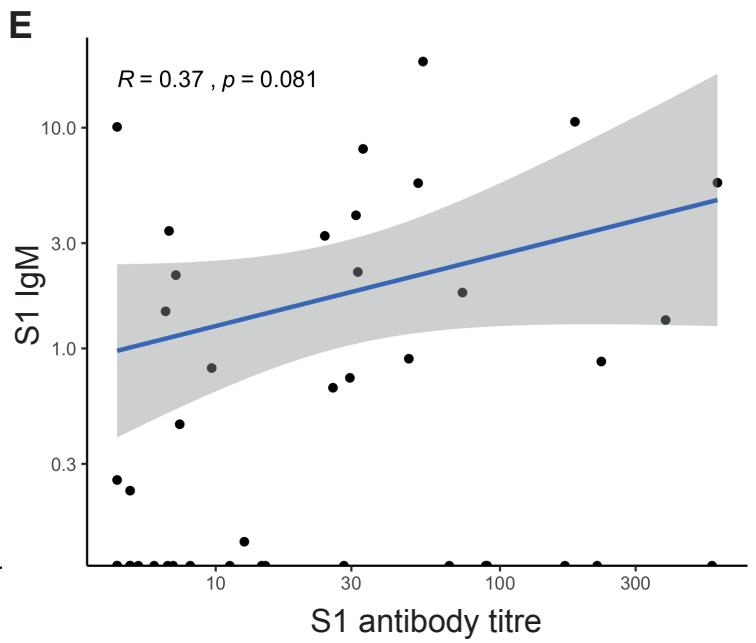
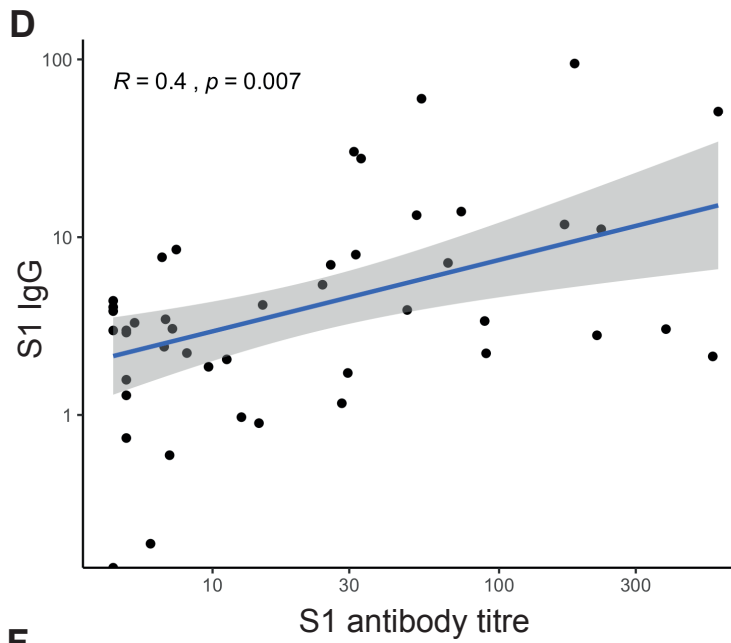
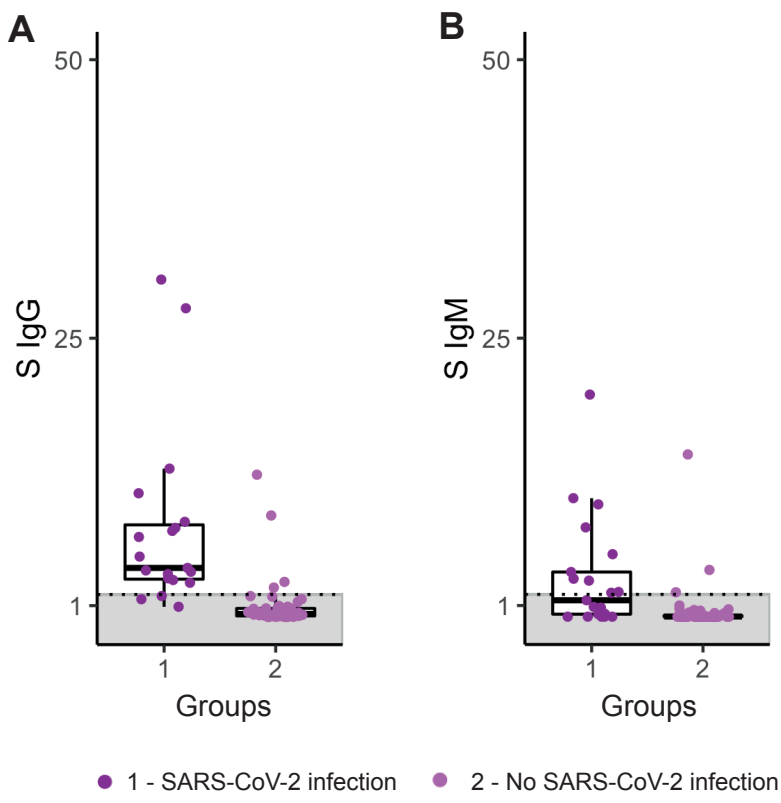


Figure S5

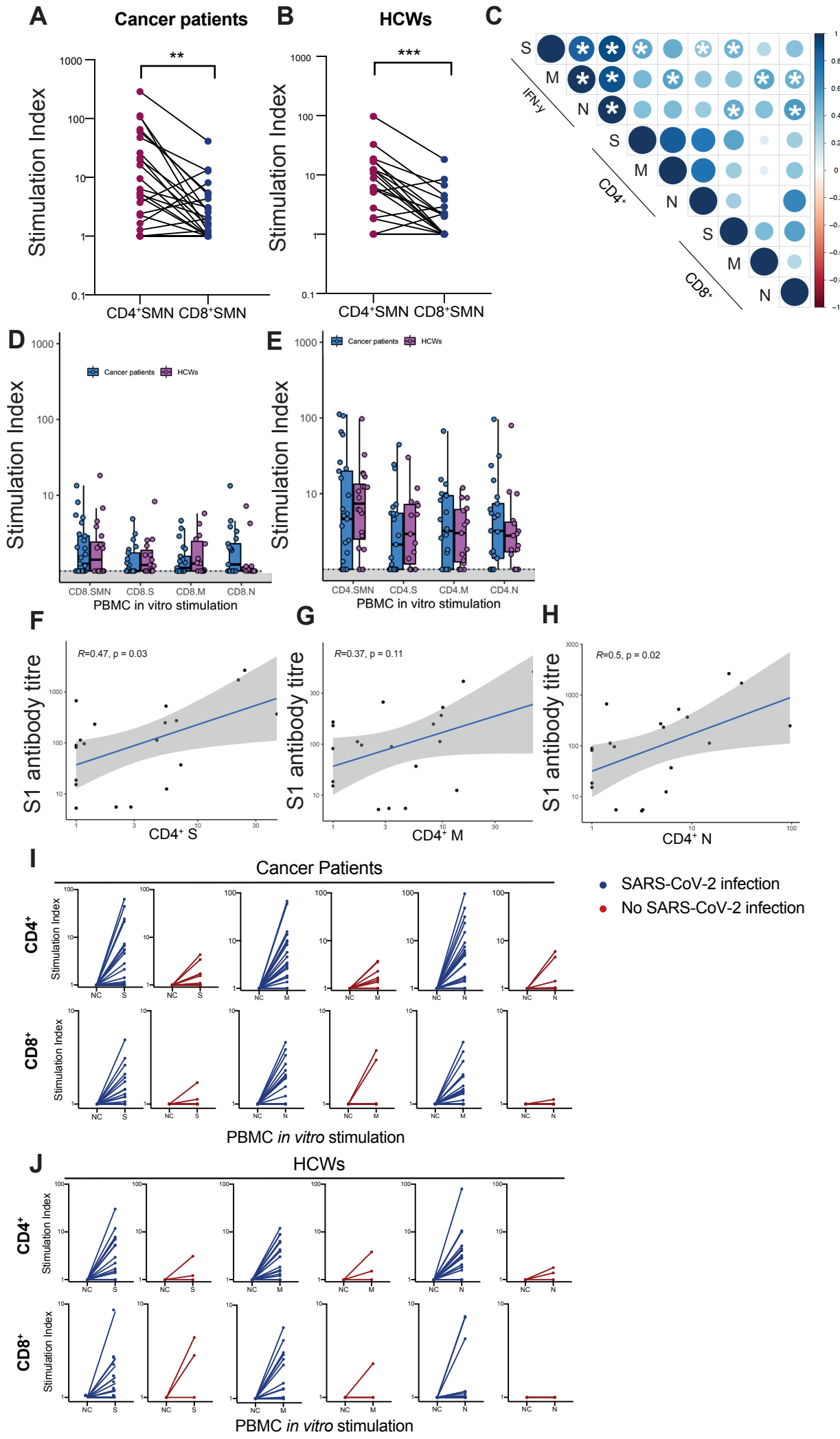


Figure S6

**Table S1:** Baseline characteristics of CAPTURE participants, including cancer patients with suspected COVID-19 (Group A), cancer patients recruited in routine care (Group B) and healthcare worker volunteers.

	<b>Groups A, B</b>	<b>Group A</b>	<b>Group B</b>	<b>Group C</b>	
<b>Cohort Characteristics, n (%)<sup>a</sup></b>	n =144 <sup>a</sup>	n=74	n=70	n = 64/73	p-value <sup>b</sup>
Age					
18-35	7 (5)	4 (5)	3 (4)	25 (39)	
36-45	15 (10)	10 (14)	5 (7)	18 (24)	<b>&lt;0.001</b>
46- 65	27 (19)	12 (16)	15 (21)	17 (27)	
>65	95 (66)	48 (65)	47 (67)	4 (6)	
Male	69 (48)	34 (46)	35 (50)	15 (23)	<b>&lt;0.01</b>
<b>Cancer diagnosis</b>					
Skin	38 (26)	2 (3)	36 (51)	-	
Urology	27 (19)	6 (8)	21 (30)	-	
Gastrointestinal	23 (16)	22 (30)	1 (1)	-	
Breast	15 (10)	15 (20)	0 (0)	-	<b>&lt;0.001</b>
Haematological	10 (7)	9 (12)	1 (1)	-	
Gynaecological	9 (6)	4 (5)	5 (7)	-	
Lung	9 (6)	8 (11)	1 (1)	-	
Sarcoma	9 (6)	4 (5)	5 (7)	-	
Other <sup>c</sup>	4 (3)	4 (5)	0 (0)	-	
<b>Cancer stage<sup>d</sup></b>					
Stage I-II	5 (4)	4 (5)	1 (1)	-	
Stage III	30 (21)	10 (14)	20 (29)	-	0.06
Stage IV	99 (69)	51 (69)	48 (69)	-	
Haematological	10 (7)	9 (12)	1 (1)	-	
<b>Duration of Follow up, days, median (IQR)</b>	135 (104- 159)	148.5 (112- 177)	127.5 (104- 202)	82(55-97)	<b>&lt;0.001</b>

a, Expressed as number and percent of affected individuals unless otherwise specified. Denominators reflect available data; unless specified, unknowns are not included; b, Significance tests: Chi-squared test of categorical variables and Mann-Whitney U test for comparison of median values. Significance threshold  $p < 0.05$ .; c, Other cancer types include: head and neck cancers (n=2), glioblastoma, thymic carcinoma; d, Cancer stage at enrolment according to AJCC stage definition. IQR, interquartile range.

**Table S2:** Baseline characteristics and clinical course in laboratory confirmed SARS-CoV-2 patients, patients with clinical suspicion of COVID-19 but negative for SARS-CoV-2, and patients recruited in routine clinical care.

	Cancer patients n= 144 <sup>b</sup>	Group A + B SARS-Cov2 positive <sup>a</sup> n= 43	Group A SARS-CoV2 <sup>a</sup> negative n= 33	Group B SARS-CoV negative <sup>a</sup> n= 68	p-value <sup>c</sup>
<b>DEMOGRAPHICS</b>					
Age, years (median, IQR)	58.9 (28-82)	59.4 (38- 78)	57.6 (28- 78)	59.1 (28- 82)	0.954
Male, n (%)	69 (47.9)	21 (48.9)	14 (42.4)	34 (50)	0.766
<b>PAST MEDICAL HISTORY</b>					
HTN	38 (26)	10 (24))	5 (15)	23 (33)	0.182
PVD/IHD/CVD	12 (8)	3 (7)	6 (18)	3 (4)	0.058
Diabetes Mellitus	15 (10)	8 (20)	2 (6)	5 (7)	0.057
Obesity (BMI ≥30)	24 (17)	11 (26)	8 (24)	25 (17)	0.308
Inflammatory/autoimmune	11 (8)	1 (2)	3 (9)	7 (10)	0.677
<b>Smoking History</b>					
Current smoker	44 (31)	15 (37)	12 (36)	17 (24)	0.474
Ex-smoker	71 (49)	18 (44)	12 (36)	41 (59)	
Never smoker	22 (15)	5 (12)	7 (21)	10 (14)	
Unknown	7 (5)	3 (7)	2 (6)	2 (3)	
<b>ONCOLOGICAL HISTORY</b>					
<b>Cancer diagnosis, n (%)</b>					
Skin	38 (26)	0 (0)	2 (6)	36 (51)	<b>&lt;0.001</b>
Urology	27 (19)	4 (10)	2 (6)	21 (30)	
Gastrointestinal	23 (16)	13 (32)	9 (27)	1 (1)	
Breast	15 (10)	8 20)	7 (21)	0 (0)	
Haematological	10 (7.0)	5 (12)	4 (12)	1 (1)	
Gynaecological	9 (6)	2 (5)	2 (6)	5 (7)	
Lung	9 (6)	5 (12)	3 (9)	1 (1)	
Sarcoma	9 (6)	1 (2)	3 (9)	5 (7)	
Other	4 (3)	3 (7)	1 (3)	0 (0)	



<b>Cancer stage<sup>d</sup>, n (%)</b>						
Stage I-II	5 (4)	2 (5)	2 (6)	1 (1)	0.056	
Stage III	30 (21)	7 (17)	3 (9)	20 (29)		
Stage IV	99 (69)	27 (66)	24 (72)	48 (69)		
Haematological	10 (7)	5 (12)	4 (12)	1 (1)		
<b>Treatment within 12 weeks, n (%)</b>						
SACT, any	113 (78)	35 (81)	27 (82)	51 (75)	<0.001	
Chemotherapy	57 (31)	28 (46)	22 (49)	7 (9)		
Small Molecule Inhibitor	41 (22)	12 (20)	5 (11)	5 (11)		
Anti-PD1/PDL1	22 (12)	1 (2)	3 (7)	18 (23)		
Anti-PD1 & anti-CTLA4	15 (8)	1 (2)	1 (2)	13 (17)		
CPI combination, other	9 (5)	2 (3)	1 (2)	6 (8)		
Radiotherapy	18 (10)	7 (12)	8 (18)	3 (4)		
Surgery	8 (4)	2 (3)	4 (9)	2 (3)		
Endocrine Therapy	6 (3)	5 (8)	1 (2)	0 (0)		
None	5 (3)	1 (2)	0 (0)	4 (5)		
Other	4 (2)	2 (3)	0 (0)	2 (3)		
<b>Cancer status<sup>e</sup>, n (%)</b>						
<b>Solid cancer, advanced (n = 99)</b>	<b>n = 99</b>	<b>n = 27</b>	<b>n = 24</b>	<b>n = 48</b>		<0.001
Resected, NED	7 (7)	1 (4)	0 (0)	6 (13)		
SACT, CR/PR	29 (29)	5 (19)	3 (13)	21 (44)		
SACT, SD	32 (32)	14 (52)	6 (25)	12 (25)		
SACT, PD	31 (31)	7 (26)	15 (62.5)	9 (19)		
<b>Solid cancer, localised (n=35)</b>	<b>n = 35</b>	<b>n = 9</b>	<b>n = 5</b>	<b>n = 21</b>	0.731	
Resected, NED	8 (23)	3 (33)	1 (20)	4 (19)		
(Neo-) adjuvant SACT	17 (49)	2 (22)	3 (60)	12 (57)		
Radical CRT	1 (3)	1 (11)	0 (0)	0 (0)		
SACT, CR/PR	5 (14)	1 (11)	1 (20)	3 (14)		
SACT, SD	2 (6)	1 (11)	0 (0)	1 (5)		
SACT, PD	2 (6)	1 (11)	0 (0)	1 (5)		
<b>Haematological, (n= 10)</b>	<b>n = 10</b>	<b>n = 5</b>	<b>n = 4</b>	<b>n = 1</b>	0.331	
SACT, in remission	5 (50)	3 (60)	1 (25)	1 (100)		
SACT, stable active disease	2 (20)	0 (0)	2 (50)	0 (0)		

SACT, progressive disease	3 (30)	2 (40)	1 (25)	0 (0)	
<b>CLINICAL OUTCOMES &amp; IMPACT</b>					
Duration of follow-up, median (IQR)	135 (104- 159)	147 (96- 153)	177 (126- 182)	104 (68- 149)	<b>0.001</b>
<b>At data cutoff</b>					
Deceased, yes	17 (12)	4 (10)	12 (36)	1 (1)	<b>&lt;0.001</b>
Primary cause death:					
Progressive Cancer	15 (10)	4 (10)	10 (30)	1 (1)	
Complications of COVID-19 <sup>f</sup>	0 (0)	0 (0)	0 (0)	0 (0)	0.623
Other	2 (1)	0 (0)	2 (6)	0 (0)	
<b>Impact on cancer treatment</b>					
Delay of treatment	44 (31)	26 (61)	5 (15)	14 (20)	
Dose modification or change of therapy	8 (6)	4 (9)	2 (6)	2 (3)	<b>&lt;0.001</b>
Premature discontinuation	1 (1)	0 (0)	0 (0)	1 (1)	

a, Indicates positive/negative for SARS-CoV2 by laboratory definition; b, Expressed as number and percent of affected individuals unless otherwise specified. Denominators reflect available data; unless specified, unknowns are not included; c, Significance tests: Chi-squared test of categorical variables and Mann-Whitney U test for comparison of median values; d, Cancer stage at enrolment according to AJCC stage definition; e, Cancer status as defined by RECIST v2.2 criteria; f, One patient dies within 30 days of PCR positivity, but not due to COVID-19  
 BMI, body mass index; CPI, checkpoint inhibitor; CR, complete response; CRT, chemoradiotherapy; CTLA-4, cytotoxic T-lymphocyte-associated protein 4; HTN, hypertension; PD, progressive disease; PR, partial response; PVD, peripheral vascular disease; IHD, ischaemic heart disease; CVD, cerebrovascular disease; IQR, interquartile range; NED, no evidence of disease; SACT, systemic anti-cancer therapy; SD, stable disease; PD1, programmed death 1; PDL1, programmed death ligand 1.

**Table S3:** Baseline characteristics professional role and work environment of healthcare volunteers

	Group C, n=73			p-value <sup>c</sup>
	All	SARS-CoV2 + <sup>a</sup>	SARS-CoV2- <sup>a</sup>	
<b>PROFILES Completion</b>	n = 64/73 <sup>b</sup>	n= 20/22	n= 44/51	
Age				
18-35	25 (39)	5 (20)	20 (45.5)	0.06
36-45	18 (24)	7 (80)	11 (25.0)	
46- 65	17 (27)	5 (25)	12 (45.4)	
>65	4 (6)	3 (15)	1 (2.3)	
Male	15 (23)	4 (20)	9 (20.5)	1
Smoking				
Current	1 (2)	0 (0)	1 (2.3)	0.782
Previous	18 (28)	6 (30)	12 (27.2)	
Never	35 (55)	14 (70)	31 (70.4)	
<b>PAST MEDICAL HISTORY</b>	n= 63	n=19	n = 44	
prev_illness, yes	21 (33)	5 (26.3)	16 (36.4)	0.627
Obese	11 (17)	6 (31.6)	5 (11.6)	0.114
HTN	2 (3)	0 (0)	2 (4.5)	0.871
CAD	0 (0)	0 (0)	0 (0)	-
Stent	0 (0)	0 (0)	0 (0)	-
Hypercholesterolaemia	2 (3)	0 (0)	2 (4.5)	0.871
CVD	0 (0)	0 (0)	0 (0)	-
DVT	0 (0)	0 (0)	0 (0)	-
PE	0 (0)	0 (0)	0 (0)	-
NIDMM	0 (0)	0 (0)	0 (0)	-
IDMM	0 (0)	0 (0)	0 (0)	-
Hyperthyroidism	0 (0)	0 (0)	0 (0)	-
Hypothyroidism	4 (6)	1 (5.2)	3 (6.8)	1
CKD	0 (0)	0 (0)	0 (0)	-
COPD	0 (0)	0 (0)	0 (0)	-
Asthma	4 (6)	1 (5.2)	3 (6.8)	1
<b>ROLE &amp; ENVIRONMENT</b>	n = 64	n = 20	n = 44	
Patient facing role, yes	58 (91)	18 (90)	40 (91)	1
Work environment				
ICU	8 (13)	6 (30)	2 (5)	<b>0.014</b>
Theatres	2 (3)	0 (0)	2 (5)	0.846
Inpatients/ward	30 (47)	9 (45)	21 (48)	1
Outpatients	37 (58)	11 (55)	26 (59)	1
Other	4 (6)	2 (10)	2 (5)	0.972
COVID cohort area, yes	34 (53)	8 (44.4)	26 (65)	0.694
Aerosol procedure, yes	8 (13)	3 (16.7)	5 (13)	0.989
Close colleague, positive	39 (61)	11 (55)	28 (64)	0.703
Off-work isolation, yes	29 (45)	14 (70)	15 (34)	<b>0.016</b>
<b>SYMPTOMS</b>	n = 64	n=20	n=44	
Fever	16 (25)	10 (50)	8 (18)	<b>0.035</b>
Headache	23 (36)	12 (60)	14 (32)	1
Coryzal illness	16 (25)	8 (40)	11 (25)	0.860
Pharyngitis	19 (30)	7 (35)	12 (27)	1
Anosmia	12 (19)	10 (50)	3 (7)	<b>&lt;0.001</b>
Cough	18 (28)	9 (45)	10 (23)	0.356

Dyspnoea	7 (11)	7 (35)	3 (7)	<b>0.028</b>
Chest tightness	7 (11)	7 (35)	2 (5)	0.057
Diarrhoea	7 (11)	5 (25)	3 (7)	0.769
Myalgia	15 (23)	10 (50)	6 (14)	<b>0.035</b>
Arthralgia	7 (11)	6 (30)	2 (5)	<b>0.037</b>
Rash	1 (2)	0 (0)	1 (2)	1

a, Indicates positive/negative for SARS-CoV2 by laboratory definition ; b, 64 out of 73 participants in the healthcare worker completed baseline PROFILES questionnaire. Expressed as number and percent of affected individuals unless otherwise specified. Denominators reflect available data; unless specified, unknowns are not included; c, Significance tests: Chi-squared test of categorical variables and Mann-Whitney U test for comparison of median values. Significance threshold  $p < 0.05$ ; d, Volunteers may work in >1 environment. CAD, coronary artery disease; CKD, chronic kidney disease; COPD, chronic obstructive pulmonary disease; CVD, cerebrovascular disease; HTN, hypertension; ICU, intensive care unit

**Table S4: Patient and healthcare volunteer shielding practices and potential sources of transmission**

	Group A & B, n=144		p-value	Group C, n= 73		p-value <sup>b</sup>
	SARS-CoV2 + <sup>a</sup>	SARS-CoV2 - <sup>a</sup>		SARS-CoV2 + <sup>a</sup>	SARS-CoV2 - <sup>a</sup>	
<b>PROFILES Completion</b>						
<b>LIFESTYLE &amp; SHIELDING</b>	n = 20 <sup>c</sup>	n = 74 <sup>c</sup>		n=19 <sup>c</sup>	n=44 <sup>c</sup>	
Advised to shield, yes	19 (85)	63 (85)	0.426	-	-	-
Time shielding						
0 days	3 (15)	15 (2)		-	-	-
1-14 days	6 (30)	2 (3)		-	-	-
14-28 days	0 (0)	2 (3)	<b>0.002</b>	-	-	-
>28 days	11 (55)	55 (74)		-	-	-
Household size <sup>d</sup>						
1	1 (5)	18 (24)		5 (26)	9 (21)	
2-3	10 (50)	38 (51)	0.075	9 (47)	25 (57)	0.886
>=4	9 (45)	18 (24)		5 (26)	10 (24)	
Household positive contact, yes	6 (30)	0 (0)	<b>&lt;0.001</b>	2 (11)	1 (2)	0.442

a, Indicates positive/negative for SARS-CoV2 by laboratory definition; b, Significance tests: Chi-squared test of categorical variables and Mann-Whitney U test for comparison of median values. Significance threshold  $p < 0.05$ ; c, Expressed as number and percent of affected individuals unless otherwise specified. Denominators reflect available data; unless specified, unknowns are not included; d, Household size inclusive of participant.

**Table S5: Clinical summary of ICU stay in 4 patients with confirmed SARS-CoV2 infection**

Patient	Cancer Diagnosis	Time in ICU (days)	Respiratory support	Reason for ICU admission	Requirement for inotropes
CV0008	T-ALL	1	Oxygen (nasal prongs, mask)	In context of COVID-19: hypoxia, 8 days after having tested positive for SARS-CoV-2, also received tocilizumab at that time	No
CV0004	Spindle cell sarcoma	1	Oxygen (nasal prongs, mask)	Not in context of COVID-19: post-op post VATS	No
CV0037	DLBCL	3	Oxygen (nasal prongs, mask)	In context of COVID: hypoxia, 1 day after having tested positive for SARS-CoV-2, also received tocilizumab at that time	No
CV0025	Breast cancer	100	Oxygen, NIV, mechanical ventilation (2 episodes: 1st 59 days, 2nd 30 days)	In context of COVID: hypoxia, tachypnoeic, 6 days after having tested positive for SARS-CoV-2, received noradrenaline	Yes

DLBCL, diffuse large B-cell lymphoma; ICU, intensive care unit; NIV, non-invasive ventilation; T-ALL, T-cell acute lymphoblastic leukaemia; VATS, video assisted thoracoscopic surgery

**Table S6: Univariate logistic regression analysis of severe COVID-19 outcomes and neutralizing response in cancer patients**

Parameter	Severe COVID-19		Hospital admission		ICU admission		Complications		Neutralizing Antibodies	
	OR (CI)	p-value	OR (CI)	p-value	OR (CI)	p-value	OR (CI)	p-value	OR (CI)	p-value
Age	1.01(0.96-1.08)	0.59	1.02(0.97-1.07)	0.54	0.95(0.85-1.05)	0.35	0.90(0.16-4.29)	0.54	1.04 (0.97-1.11)	0.28
BMI	1.02(0.91-1.14)	0.73	0.99(0.89-1.10)	0.91	0.85(0.57-1.08)	0.29	<b>0.70(0.48-0.89)</b>	<b>0.02</b>	1.16(0.99-1.44)	0.11
ECOG	1.39(0.47-4.33)	0.55	2.15(0.77-6.76)	0.16	1.61(0.24-11.62)	0.62	<b>4.42(1.16-23.42)</b>	<b>0.046</b>	0.84(0.24-1.94)	0.79
Gender	1.49(0.39-6.04)	0.56	1.92(0.57-6.72)	0.29	NA	NA	1.76(0.37-9.69)	0.48	1.00(0.21-4.87)	1.00
Smoking	1.11(0.50-2.49)	0.80	1.35(0.66-2.86)	0.42	2.92(0.66-21.17)	0.21	1.10(0.44-2.79)	0.85	0.94(0.37-2.35)	0.89
Cancer diagnosis	1.22(0.96-1.60)	0.17	1.06(0.85-1.32)	0.68	1.33(0.86-2.43)	0.31	0.98(0.67-1.37)	0.92	1.01(0.77-1.35)	1.00
Solid vs. hematological malignancy	2.9(0.31-26.93)	0.32	2.57(0.30-54.54)	0.43	<b>3.8(2.65-1090)</b>	<b>0.01</b>	5.50(0.57-53.98)	0.12	0.18(0.02-1.80)	0.12
Cancer status	1.00(0.57-1.67)	0.99	0.74(0.43-1.20)	0.24	0.94(0.29-2.15)	0.90	1.26(0.69-2.24)	0.42	0.95(0.54-1.81)	0.86
Stage	3.39(1.03-16.17)	0.07	2.12(0.83-6.51)	0.14	3.00(0.19-376.20)	0.65	1.04(0.69-2.24)	0.95	0.24(0.04-0.98)	0.08
CPI, all combinations	0.85(0.04-7.48)	0.89	0.23(0.01-2.00)	0.22	NA	NA	NA	NA	0.18(0.02-1.80)	0.12
Chemotherapy	1.01(0.26-4.09)	0.99	2.22(0.65-7.92)	0.21	NA	NA	0.67(0.14-3.24)	0.61	0.38(0.05-1.90)	0.27
Small molecule inhibitor	0.68(0.09-3.46)	0.67	0.98(0.22-4.60)	0.99	NA	NA	0.48(0.02-3.33)	0.52	NA	NA
Endocrine therapy	3.11(0.50-19.63)	0.21	NA	NA	3.50(0.15-43.99)	0.34	0.85(0.04-6.55)	0.89	1.21(0.16-25.05)	0.87
Radiotherapy	4.67(0.86-28.20)	0.07	2.24(0.42-17.07)	0.37	<b>14.00(1.14-336.9)</b>	<b>0.047</b>	4.65(0.74-28.40)	0.09	0.52(0.09-4.20)	0.49
Surgery	NA	NA	0.37(0.02-4.16)	0.43	NA	NA	NA	NA	NA	0.99
No. of comorbidities	0.98(0.57-1.63)	0.94	0.99(0.63-1.57)	0.97	0.30(0.02-1.04)	0.16	1.45(0.82-2.70)	0.21	1.44(0.79-2.94)	0.26
HTN	1.71(0.37-7.38)	0.47	1.54(0.39-6.88)	0.55	NA	NA	0.96(0.13-5.12)	0.97	2.92(0.43-58.23)	0.34
PVD/IHD/CVD	1.32(0.06-15.16)	0.83	NA	0.99	NA	NA	2.36(0.10-28.22)	0.51	NA	0.99
Diabetes Mellitus	0.83(0.11-4.37)	0.84	1.40(0.30-7.71)	0.67	NA	NA	1.61(0.20-9.26)	0.61	NA	NA
Inflammatory/autoimmune	NA	NA	NA	NA	NA	NA	NA	NA	0.21(0.01-5.79)	0.29
Charlston comorbidity index	1.05(0.83-1.36)	0.69	1.15(0.93-1.46)	0.21	0.71(0.41-1.10)	0.15	1.04(0.79-1.40)	0.80	1.10(0.83-1.46)	0.50
spO <sub>2</sub>	0.30(0.01-0.68)	0.11	0.75(0.48-0.97)	0.09	0.83(0.55-1.16)	0.25	0.87(0.71-1.03)	0.13	1.19(0.99-1.50)	0.07
HB at diagnosis	0.99(0.95-1.04)	0.83	0.99(0.95-1.03)	0.62	<b>0.90(0.78-0.98)</b>	<b>0.049</b>	0.97(0.92-1.02)	0.21	0.98(0.93-1.02)	0.37
WBC at diagnosis	0.77(0.50-1.00)	0.14	0.79(0.58-1.00)	0.12	0.47(0.13-0.97)	0.13	0.81(0.54-1.01)	0.25	NA	NA
Neutrophils at diagnosis	0.93(0.55-1.46)	0.76	0.78(0.49-1.18)	0.25	0.92(0.32-1.94)	0.84	0.84(0.46-1.37)	0.51	1.01(0.64-1.67)	0.95
Platelets at diagnosis	0.99(0.98-1.00)	0.23	1.00(0.99-1.01)	0.75	0.97(0.94-1.00)	0.07	1.00(0.99-1.00)	0.35	1.00(0.99(1.01)	1.00
CRP at diagnosis	1.01(1.00-1.02)	0.07	1.02(1.00-1.06)	0.07	1.01(1.00-1.02)	0.15	1.01(1.00-1.01)	0.17	1.00(0.99-1.02)	0.44
Creatinine at diagnosis	0.97(0.91-1.02)	0.27	0.98(0.94-1.03)	0.47	0.96(0.88-1.03)	0.25	0.96(0.89-1.01)	0.15	1.02(0.97-1.08)	0.53

Respiratory frequency at diagnosis	1.38(1.06-2.15)	0.07	1.06(0.91-1.32)	0.54	1.36(1.06-2.19)	0.08	1.09(0.93-1.33)	0.30	0.90(0.72-1.06)	0.23
Heart rate at diagnosis	0.92(0.81-1.01)	0.14	0.99(0.92-1.08)	0.83	0.98(0.85-1.10)	0.79	0.92(0.81-1.02)	0.15	1.02(0.94-1.12)	0.67
Systolic pressure at diagnosis	0.93(0.86-0.99)	0.07	1.00(0.96-1.05)	0.85	0.90(0.74-1.01)	0.14	0.98(0.98-1.03)	0.39	1.06(1.00-1.44)	0.08
Diastolic pressure at diagnosis	0.91(0.79-1.00)	0.10	0.98(0.91-1.05)	0.62	NA	NA	0.97(0.88-1.05)	0.43	0.97(0.89-1.05)	0.46
Temperature at diagnosis	1.27(0.53-3.14)	0.58	2.17(0.90-6.45)	0.12	2.55(0.77-11.13)	0.15	1.08(0.43-2.68)	0.87	1.07(0.44-2.73)	0.88
Lactate at diagnosis	1.58(0.45-7.73)	0.49	0.5(0.85-1.05)	0.56	0.12(0.00-2.53)	0.39	3.06(0.77-26.71)	0.19	3.36(0.63-71.44)	0.29

Data are odds ratio with 97.5% CI in parentheses. ICU, Intensive Care Unit; ECOG, Eastern Cooperative Oncology Group; BMI, Body mass index; CPI, immune checkpoint inhibition; HTN, hypertension; PVD, Peripheral vascular disease ; IHD, Ischemic heart disease ; CVD, Cardiovascular disease ;spO2, ;HB, Haemoglobin; CRP, C-reactive protein, NA, No available; NS, non-significant.



**Table S7: Univariate logistic regression analysis of symptomatic COVID-19 and neutralising response in HCWs**

Parameter	Symptoms		Neutralizing Antibody	
	OR (CI)	p-value	OR (CI)	p-value
Age	10.52(0.14-1.55)	0.52	1.42(0.51-4.67)	0.27
BMI	0.95(0.75-1.18)	0.60	1.06(0.85-1.39)	0.61
Gender	0.57(0.02-7.30)	0.75	0.66(0.02-6.93)	0.67
Smoking	1.67(0.17-14.47)	0.64	5.40(0.59-126.79)	0.19
Work environment	0.65(0.27-1.34)	0.27	1.01(0.52-1.97)	0.97
COVID-19 area	0.67(0.07-5.53)	0.71	0.17(0.02-1.23)	0.10

Data are odds ratio with 97.5% CI in parentheses. BMI, Body mass index; NA, No available.

**Table S8:** Comparison of clinical characteristics between confirmed positive cancer patients and HCWs

Clinical Characteristics	Cancer patients, SARS-CoV2 positive <sup>a</sup> n= 43 <sup>b</sup>	Group C, SARS-CoV2 positive <sup>a</sup> n= 22	p-value <sup>c</sup>
Age			
18-35	0 (0)	5 (20)	
36-45	8 (19)	7 (80)	<b>&lt;0.001</b>
46- 65	6 (14)	5 (25)	
>65	29 (67)	3 (15)	
Male	21 (49)	4 (20)	<b>0.016</b>
<b>Past medical history</b>			
HTN	10 (24)	0 (0)	<b>&lt;0.001</b>
PVD/IHD/CVD	3 (7)	0 (0)	<b>&lt;0.001</b>
Diabetes Mellitus	9 (19)	0 (0)	<b>0.023</b>
Obesity, BMI>30	18 (42)	6 (32)	0.289
Inflammatory/Autoimmune	1 (2)	0 (0)	1
<b>COVID-19 illness</b>			
<b>Symptoms</b>	n = 43/43	n = 20/22	
Fever	34 (83)	10 (50)	<b>&lt;0.001</b>
Dyspnoea	20 (47)	7 (35)	0.426
Cough	28 (65)	9 (45)	0.172
Anosmia	8 (19)	10 (50)	<b>0.016</b>
Myalgia	13 (13)	10 (50)	0.164
Coryzal illness	6 (14)	8 (40)	<b>0.028</b>
Headache	9 (21)	12 (60)	<b>0.004</b>
Diarrhoea	11 (26)	5 (25)	1
Duration of symptoms, median (range)	19 (1- 146)	14 (3- 120)	0.306

a, Indicates positive/negative for SARS-CoV2 by laboratory definition; b, Expressed as number and percent of affected individuals unless otherwise specified. Denominators reflect available data; unless specified, unknowns are not included; c, Significance tests: Chi-squared test of categorical variables and Mann-Whitney U test for comparison of median values. Significance threshold p<0.05.