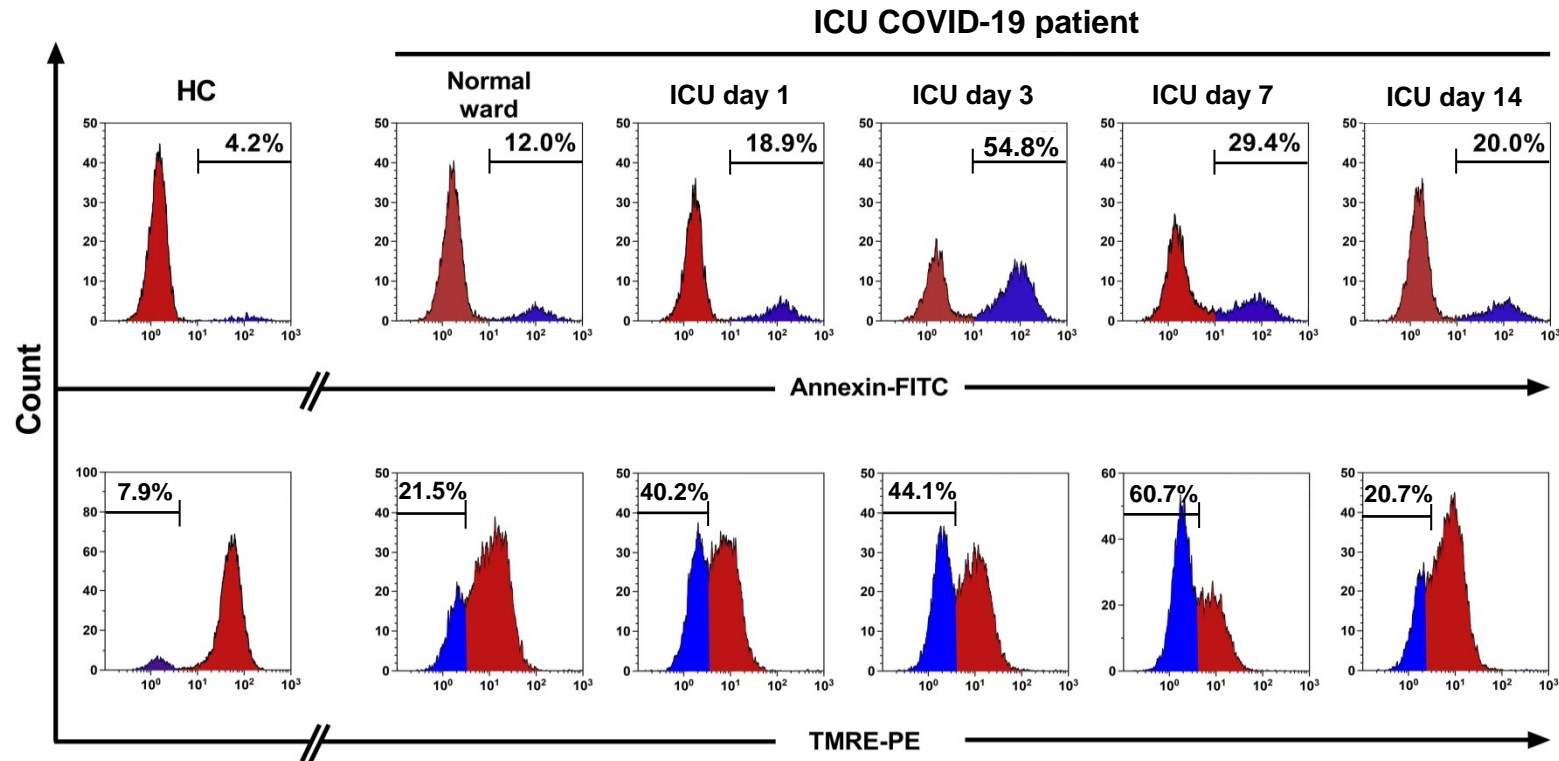


Supplementary Fig. 1

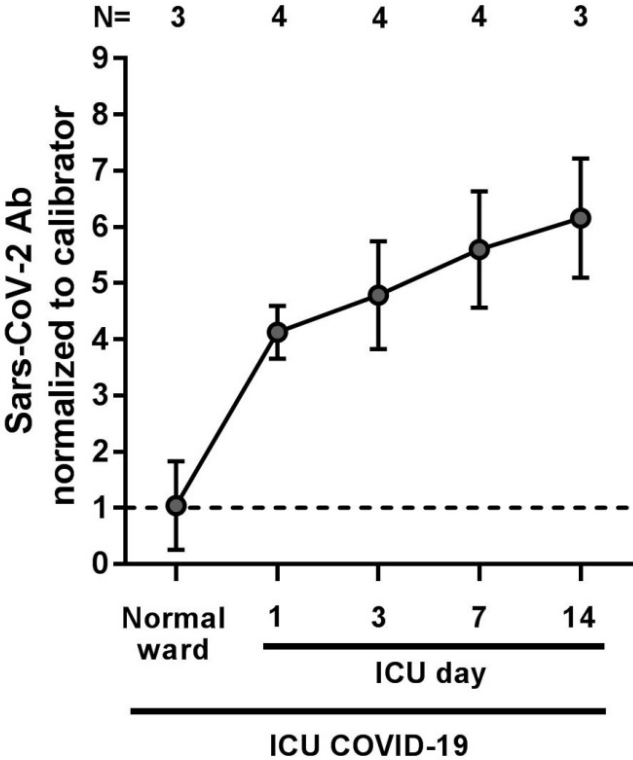


Supplementary Fig. 1-FC detected changes of PLT PS externalization and $\Delta\psi$ depolarization during severe COVID-19 disease.

Histograms represent the kinetics of changes in PS externalization (upper panel) as well as $\Delta\psi$ depolarization (lower panel) induced by sera of one COVID-19 patient. Serum samples were withdrawn at hospital admission with a moderate state of COVID-19 disease

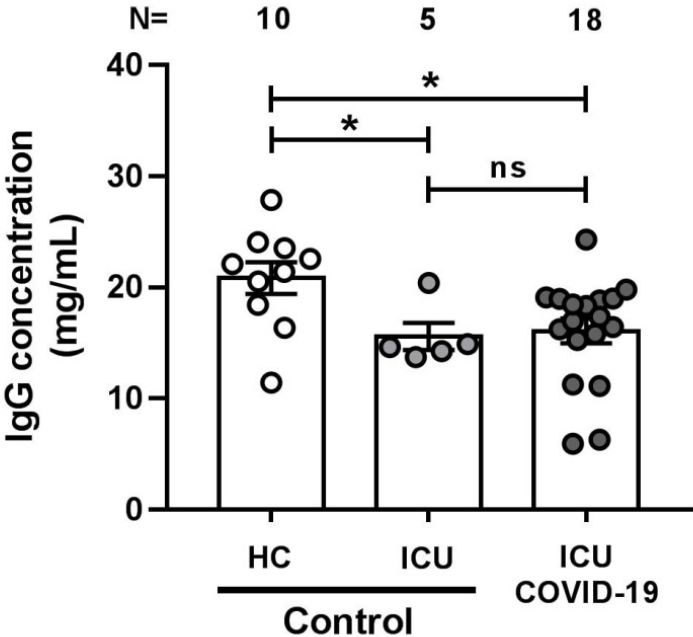
(normal ward) as well as during the patients' severe course of disease at day 1, 3, 7 and 14 of ICU hospitalization. COVID-19 serum induced changes in PLT PS externalization as well as $\Delta\psi$ depolarization were detected by FC using Annexin V-FITC and TMRE-PE staining, respectively. Data are presented as percentage of Annexin positive and TMRE negative events, respectively. HC, healthy control.

Supplementary Fig. 2 A



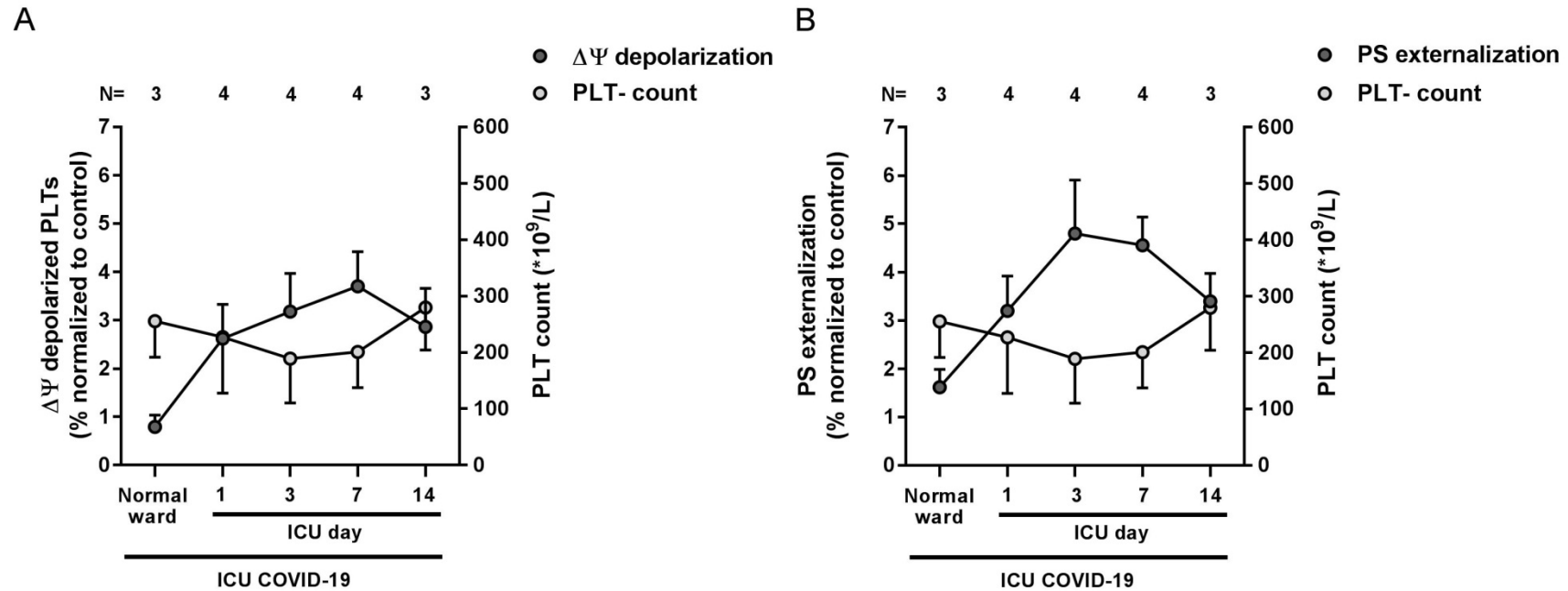
Supplementary Fig. 2 A- SARS-CoV-2 antibody titres of COVID-19 patients during severe course of disease patients. Follow up sera of ICU COVID-19 patients were withdrawn with moderate (n=3) as well as with severe COVID-19 disease at day 1, 3, 7 and 14 of ICU hospitalization (n=4) and screened for SARS-CoV-2 IgG-antibodies against the S1 spike protein by ELISA testing. SARS-CoV-2 IgG antibody titres were evaluated semi-quantitatively by calculation of a ratio of the extinction of the control or patient sample over the extinction of the calibrator. The cut-off for samples to be considered positive was a ratio ≥ 0.8 . Dot lines represent baseline of the calibrator. The number of patients and healthy donors tested is reported in each graph.

Supplementary Fig. 2 B



Supplementary Fig. 2 B- Concentrations of IgG fractions isolated from HC-, ICU non-COVID-19 control and ICU COVID-19 patient sera. After isolation from serum, concentrations of HC, ICU non-COVID-19 control or ICU COVID-19 IgG fractions were assessed using a NanoDrop One spectrophotometer. ns, not significant; * $p < 0.05$, ** $p < 0.01$, *** $p < 0.001$ and **** $p < 0.0001$. The number of patients and healthy donors tested is reported in each graph.

Supplementary Fig. 3



Supplementary Fig. 3-Serum induced changes of PS externalization and $\Delta\Psi$ depolarization vs. PLT-counts. Graphs show serum induced changes in $\Delta\Psi$ (**A**) as well as PS externalization (**B**) in wPLTs that were induced by sera of 4 COVID-19 patients that were collected for up to 14 days during hospitalization. In analogue to serum induced changes, PLT-counts of the corresponding patients on the day of serum sample withdrawal are shown (grey circles). Data are presented as mean \pm SEM of the measured fold

increase compared to control (black circles) or absolute PLT-counts. The number of patient sera tested is reported in each graph. Dot lines in **(A+B)** represent the calculated cutoffs determined testing sera from healthy donors as mean of fold increase (FI) + 2xSEM. The number of patients and healthy donors tested is reported in each graph.