

1 **Common genetic variants identify therapeutic targets for COVID-19 and**
2 **individuals at high risk of severe disease**

3

4 J. E. Horowitz^{1†}, J. A. Kosmicki^{1†}, A. Damask¹, D. Sharma¹, G. H. L. Roberts², A. E. Justice³, N.
5 Banerjee¹, M. V. Coignet², A. Yadav¹, J. B. Leader³, A. Marcketta¹, D. S. Park², R. Lanche¹, E.
6 Maxwell¹, S. C. Knight², X. Bai¹, H. Guturu², D. Sun¹, A. Baltzell², F. S. P. Kury¹, J. D. Backman¹,
7 A. R. Girshick², C. O’Dushlaine¹, S. R. McCurdy², R. Partha², A. J. Mansfield¹, D. A. Turissini²,
8 A. H. Li¹, M. Zhang², J. Mbatchou¹, K. Watanabe¹, L. Gurski¹, S. E. McCarthy¹, A. Verma⁴, G.
9 Sirugo⁴, Regeneron Genetics Center*, M. D. Ritchie⁴, M. Jones¹, S. Balasubramanian¹, W. J.
10 Salerno¹, A. R. Shuldiner¹, D. J. Rader⁴, T. Mirshahi³, A. E. Locke¹, J. Marchini¹, J. D. Overton¹,
11 D. J. Carey³, L. Habegger¹, M. N. Cantor¹, K. A. Rand², E. L. Hong², J. G. Reid¹, C. A. Ball², A.
12 Baras^{1‡}, G. R. Abecasis^{1‡}, M. A. Ferreira^{1‡}

13

14 From:

15 ¹Regeneron Genetics Center, 777 Old Saw Mill River Rd., Tarrytown, NY 10591, USA

16 ²AncestryDNA, 1300 West Traverse Parkway, Lehi, UT 84043, USA

17 ³Geisinger, Danville, PA, 17822, USA

18 ⁴Department of Genetics, Perelman School of Medicine, University of Pennsylvania, Philadelphia,
19 PA, 19104, USA

20

21 *A complete list of investigators is provided in the Supplementary Appendix.

22 †J. A. Kosmicki and J. E. Horowitz contributed equally to this manuscript.

23 ‡A. Baras, G. R. Abecasis and M. A. Ferreira jointly supervised this work.

24 Correspondence to: manuel.ferreira@regeneron.com and goncalo.abecasis@regeneron.com

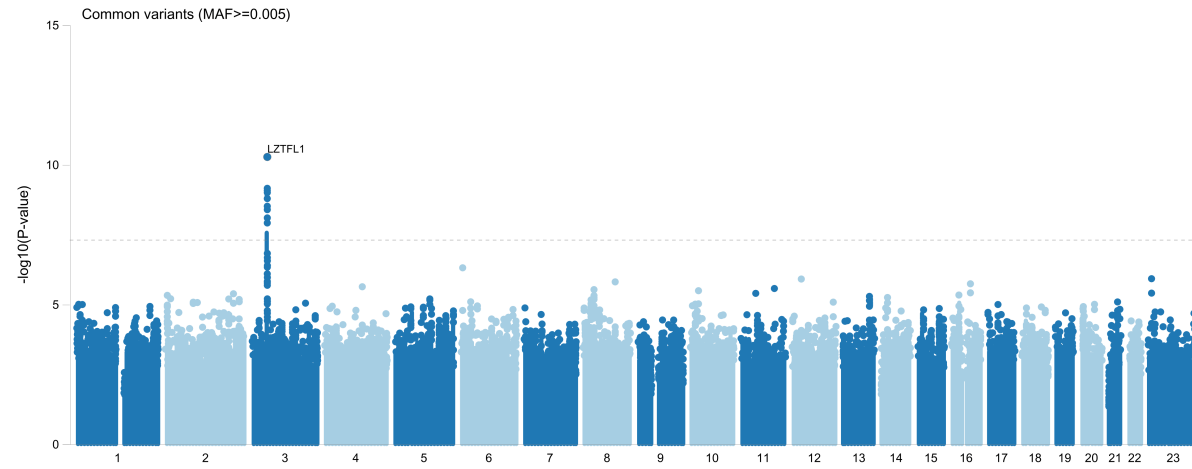
25

26 **This research has been conducted using the UK Biobank Resource (Project 26041)**

SUPPLEMENTARY FIGURES

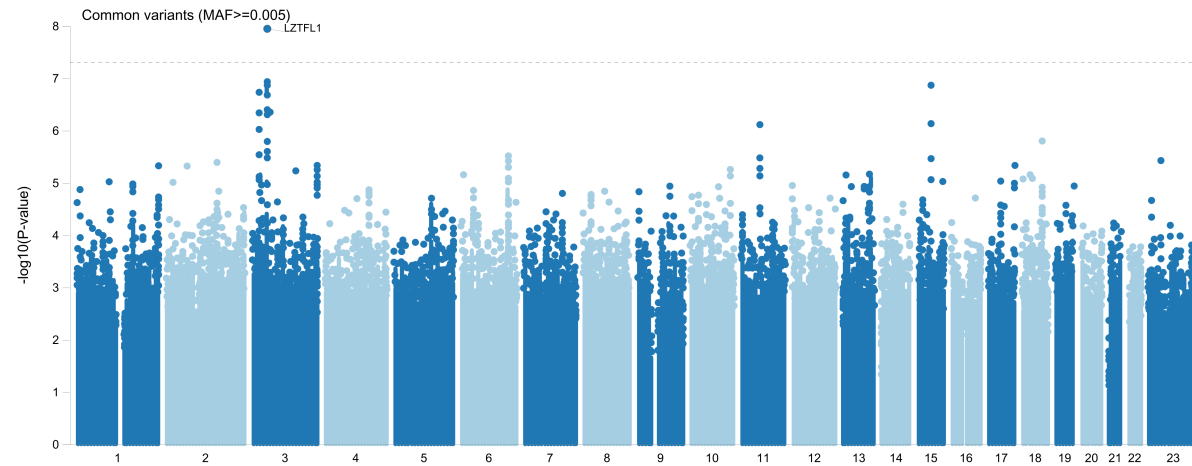
A.

COVID-19 positive hospitalized vs COVID-19 positive and not hospitalized



B.

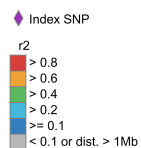
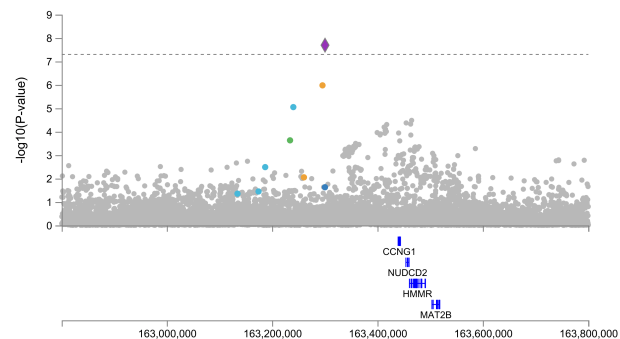
COVID-19 positive severe vs COVID-19 positive and not hospitalized



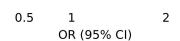
Supplementary Figure 1. Summary of association results from the meta-analysis of two phenotypes related to COVID-19 severity.

A.

5q34
rs79833209:T
CCNG1

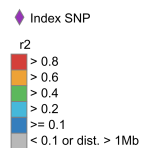
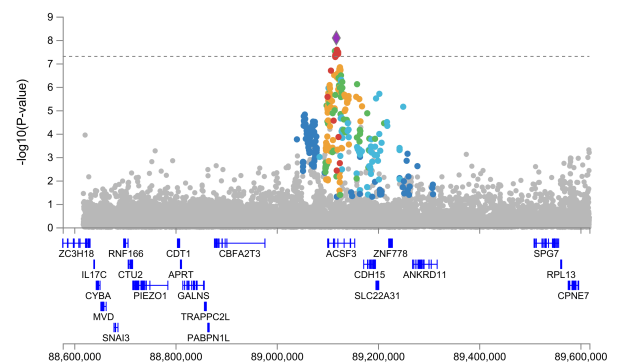


STUDY	N CASES		N CONTROLS		OR [95% CI]	PVALUE	AAF
	RR RA AA		RR RA AA				
UKB_500K_Genotyped_EUR	1083 61 1		414701 19114 223		1.27 [0.959,1.68]	0.095	0.0226
UKB_500K_Genotyped_SAS	45 4 0		10190 299 3		3.255 [1.092,9.696]	0.034	0.0151
ANCESTRY_Freeze_Two_EUR	488 <100 <100		63475 2830 <100		1.645 [1.123,2.408]	0.011	0.0226
ANCESTRY_Freeze_Two_AFR	<100 <100 <100		2857 <100 <100		1.582 [0.149,16.763]	0.703	0.0076
ANCESTRY_Freeze_Two_AMR	<100 <100 <100		6201 163 <100		1.38 [0.383,4.975]	0.622	0.0154
UPENN_Freeze_One_AFR	67 0 0		8646 92 0		0.374 [0.033,4.179]	0.425	0.0053
GHS_Freeze_145_Genotyped_EUR	153 12 0		107891 4951 35		1.742 [0.829,3.659]	0.143	0.0226
external_Ellinghaus_NEJM_2020_EUR	1533 75 0		2115 88 0		1.18 [0.727,1.917]	0.503	0.0204
external_Pairo-Castineira_2020_EUR	1555 118 2		8041 334 3		1.822 [1.419,2.34]	2.5e-06	0.0204
META	5072 308 4		624117 27910 296		1.544 [1.326,1.796]	2.0e-08	0.0219

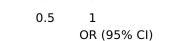


B.

16q24.3
rs4782327:G
ACSF3

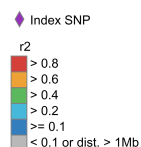
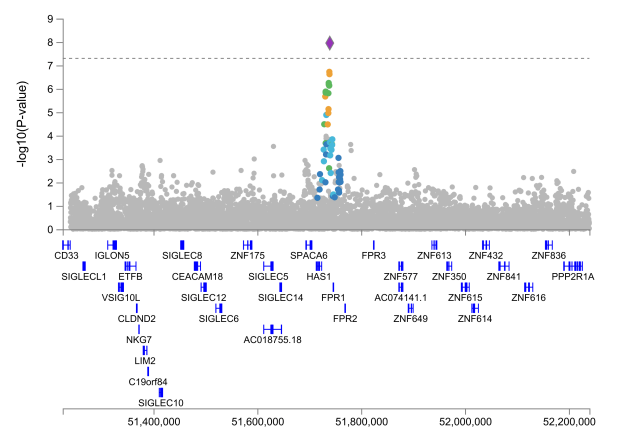


STUDY	N CASES		N CONTROLS		OR [95% CI]	PVALUE	AAF
	RR RA AA		RR RA AA				
UKB_500K_Genotyped_EUR	666 410 69		271167 143678 19193		1.196 [1.085,1.319]	3.1e-04	0.21
UKB_500K_Genotyped_AFR	28 32 14		3920 4246 1139		1.282 [0.912,1.804]	0.153	0.351
UKB_500K_Genotyped_SAS	18 20 11		4409 4708 1375		1.435 [0.944,2.182]	0.091	0.356
ANCESTRY_Freeze_Two_EUR	302 186 <100		41287 22083 2965		1.19 [1.03,1.374]	0.018	0.211
ANCESTRY_Freeze_Two_AFR	<100 <100 <100		1361 1250 285		1.381 [0.944,2.022]	0.096	0.316
ANCESTRY_Freeze_Two_AMR	<100 <100 <100		4157 1992 217		1.362 [0.917,2.022]	0.126	0.191
UPENN_Freeze_One_AFR	30 31 6		3712 3980 1046		0.84 [0.581,1.213]	0.352	0.354
GHS_Freeze_145_Genotyped_EUR	110 49 6		71184 36945 4748		0.875 [0.666,1.15]	0.339	0.212
external_Ellinghaus_NEJM_2020_EUR	936 582 90		1348 751 104		1.116 [0.959,1.298]	0.156	0.218
external_Pairo-Castineira_2020_EUR	945 626 103		5125 2856 398		1.188 [1.076,1.313]	7.0e-04	0.218
META	3109 2002 346		407670 222489 31470		1.171 [1.11,1.236]	8.2e-09	0.216

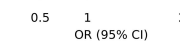


C.

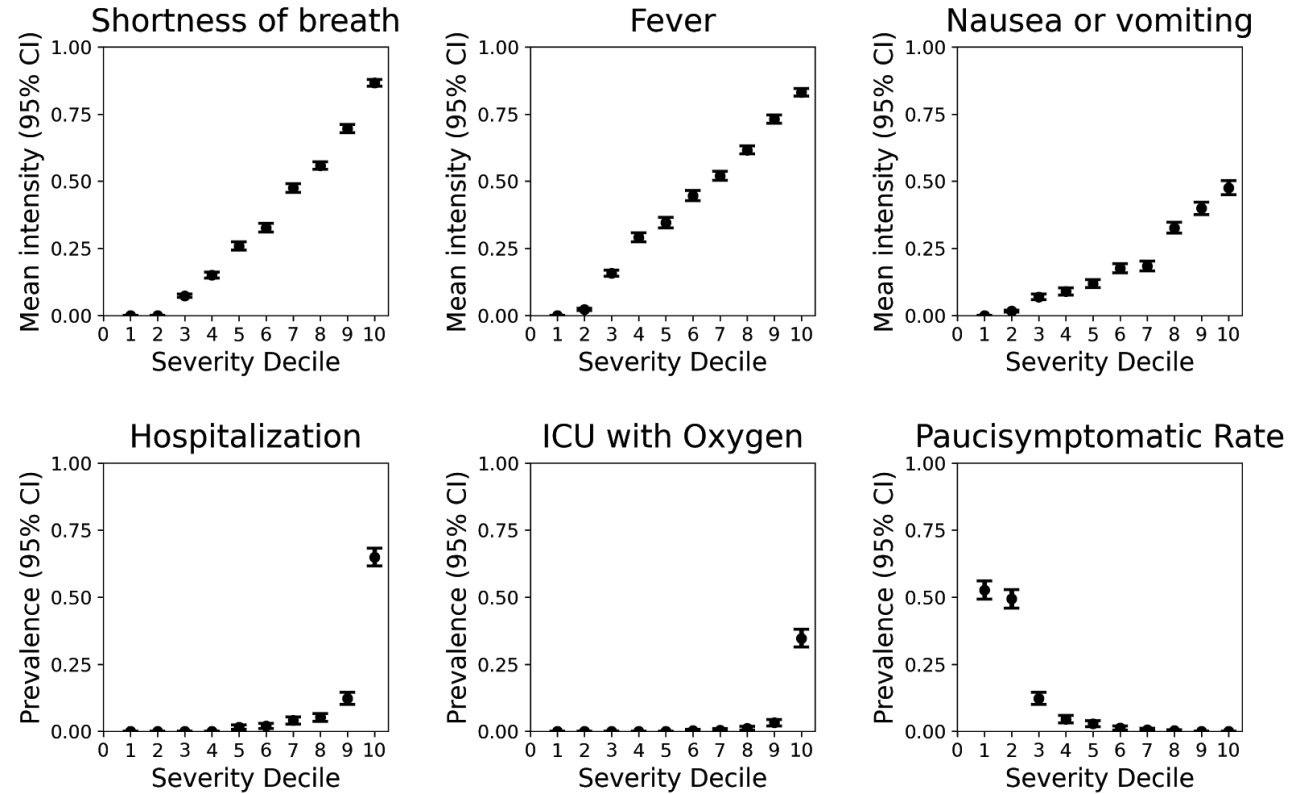
19q13.41
rs12461764:G
FPR1



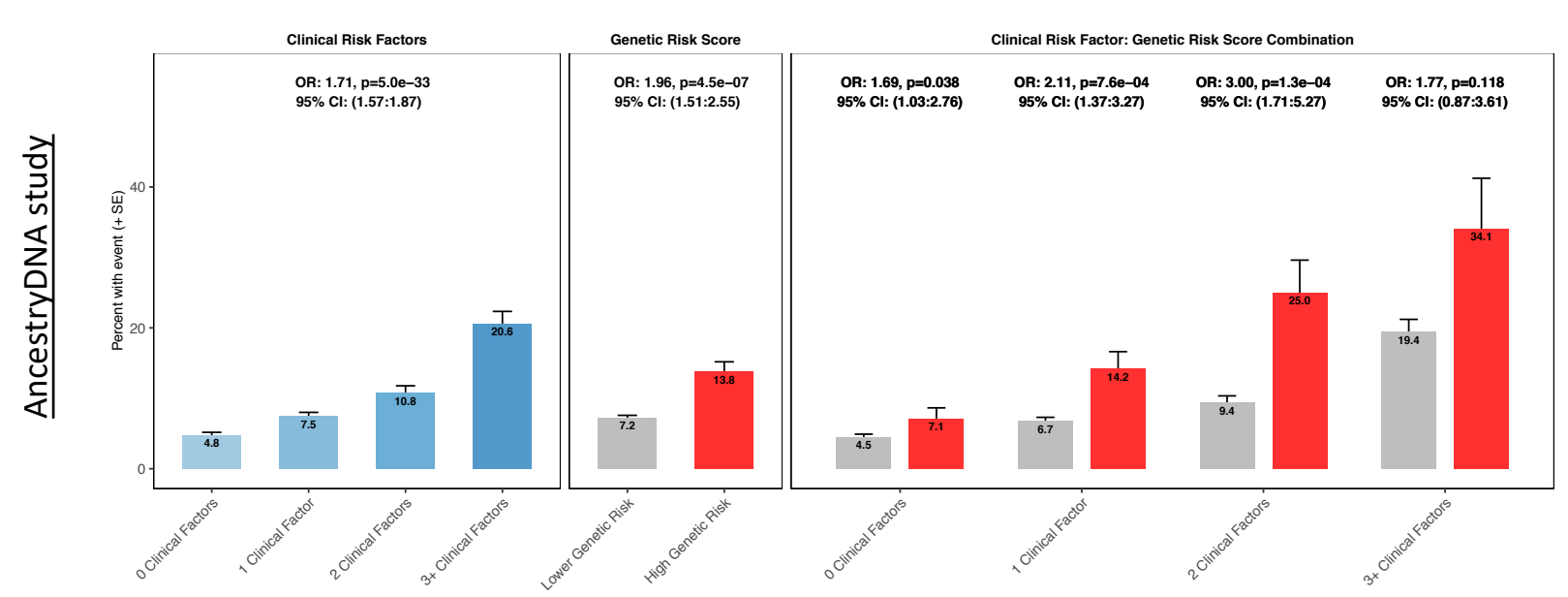
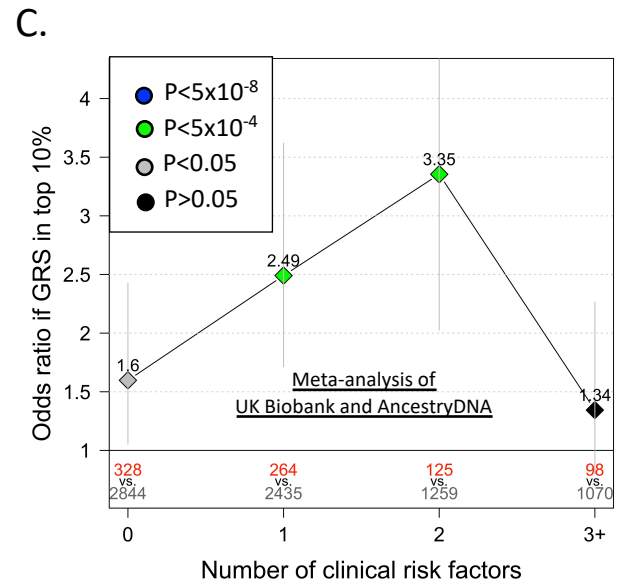
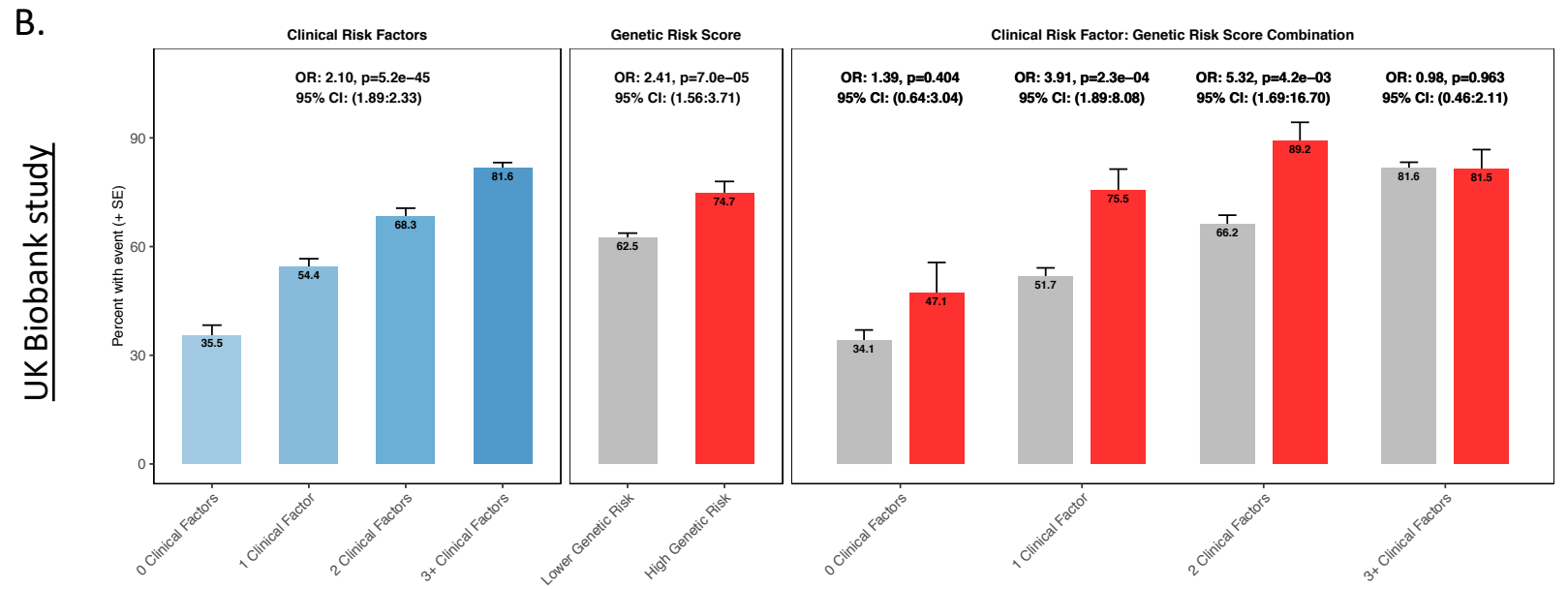
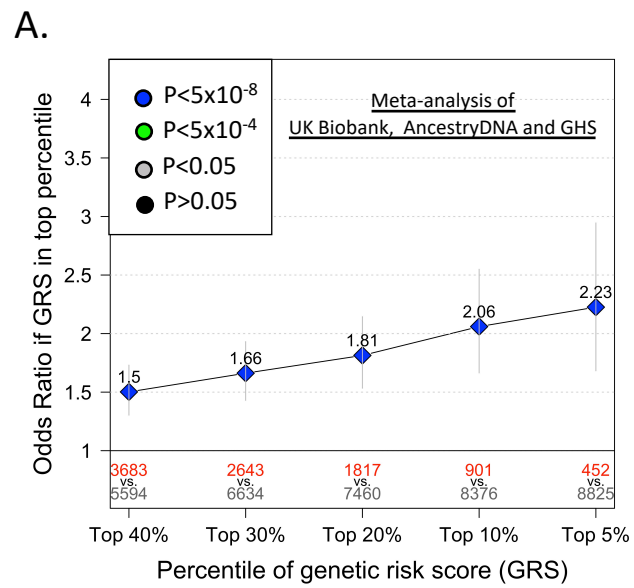
STUDY	N CASES		N CONTROLS		OR [95% CI]	PVALUE	AAF
	RR RA AA		RR RA AA				
UKB_500K_Genotyped_EUR	446 530 169		183733 197192 53113		1.142 [1.049,1.243]	0.002	0.35
UKB_500K_Genotyped_AFR	39 31 4		5258 3478 569		1.13 [0.77,1.66]	0.532	0.248
UKB_500K_Genotyped_SAS	20 18 11		4278 4845 1369		1.176 [0.778,1.776]	0.442	0.362
ANCESTRY_Freeze_Two_EUR	185 252 <100		28233 30098 8004		1.245 [1.097,1.413]	6.6e-04	0.348
ANCESTRY_Freeze_Two_AFR	<100 <100 <100		1526 1171 199		1.204 [0.799,1.814]	0.375	0.274
ANCESTRY_Freeze_Two_AMR	<100 <100 <100		2454 3059 853		1.074 [0.775,1.488]	0.669	0.374
UPENN_Freeze_One_AFR	34 25 8		4858 3372 508		1.283 [0.843,1.952]	0.245	0.264
GHS_Freeze_145_Genotyped_EUR	65 76 24		48584 51001 13292		1.125 [0.891,1.42]	0.324	0.348
external_Ellinghaus_NEJM_2020_EUR	576 773 259		933 1002 269		1.25 [1.089,1.435]	0.002	0.35
META	1431 1770 582		279857 295218 78176		1.181 [1.116,1.25]	1.1e-08	0.346



Supplementary Figure 2. Association with three novel loci identified in this study.



Supplementary Figure 3. Association between the continuous severity score and key individual measures of severity. The continuous severity score was derived from the first principal component across nine survey fields related to COVID-19 clinical outcomes, including three symptoms, hospitalization, ICU admittance, and other severe complications due to COVID-19 illness (Methods). Plots reflect mean symptom severity (top three panels) or incident prevalence (bottom three panels) for several fields as a function of ascending severity decile. Symptom information was encoded as follows: 0=None, 0.2=Very Mild, 0.4=Mild, 0.6=Moderate, 0.8=Severe, and 1.0=Very Severe. A paucisymptomatic case corresponds to reporting symptoms of mild intensity or less for any of the symptom severity questions.



Supplementary Figure 4. Association between a four-SNP genetic risk score (GRS) and risk of hospitalization among COVID-19 cases of European ancestry.

0 Clinical Risk Factors 2 Clinical Risk Factors Lower Genetic Risk (Bottom 90% of GRS)
 1 Clinical Risk Factor 3+ Clinical Risk Factors High Genetic Risk (Top 10% of GRS)

SUPPLEMENTARY TABLES

Supplementary Table 1. Breakdown of COVID-19 status across the four studies included in the analysis.

COVID-19 status	Positive qPCR or serology for SARS-CoV-2	ICD10 U07 diagnosis or hospitalization	Severe COVID-19 (ventilation or death)	Negative qPCR or serology test for SARS-CoV-2	Sample size				
					AncestryDNA	UK Biobank	GHS	PMBB	Total
Positive	Yes	Yes	Yes	Yes or No or NA	307	251	36	27	621
	Yes	Yes	No or NA	Yes or No or NA	368	642	129	40	1,179
	Yes	No or NA	Yes	Yes or No or NA	0	42	0	0	42
	Yes	No or NA	No or NA	Yes or No or NA	7,658	777	689	99	9,223
	No or NA	Yes	Yes	No or NA	0	16	0	0	16
	No or NA	Yes	No or NA	No or NA	0	92	0	0	92
	No or NA	No or NA	Yes	No or NA	0	122	0	0	122
	No or NA	Yes	Yes	Yes	0	15	0	0	15
	No or NA	Yes	No or NA	Yes	0	150	0	0	150
	No or NA	No or NA	Yes	Yes	0	11	0	0	11
					Total = 8,333	Total = 2,003	Total = 854	Total = 166	Total = 11,356
Negative	No or NA	No or NA	No or NA	Yes	22,131	15,653	16,148	959	54,891
Unknown	NA	No or NA	No or NA	NA	53,466	438,182	96,729	7,779	596,156
Total					83,930	455,838	113,731	8,904	662,403

Supplementary Table 2. Demographics and clinical characteristics of study participants.

Demographics	COVID-19 Positive		Covid-19 Negative or Unknown
	Hospitalized	Not Hospitalized	
AncestryDNA			
Total N	675	7658	75597
AFR ancestry, n (%)	<100	509 (6.6%)	2896 (3.8%)
AMR ancestry, n (%)	<100	1045 (13.6%)	6366 (8.4%)
EUR ancestry, n (%)	522 (77.3%)	6104 (79.7%)	66335 (87.7%)
Average Age, y (% >60y)	56.13 (42.1%)	48.59 (23.4%)	52.75 (35.6%)
Female, n (%)	400 (59.3%)	5032 (65.7%)	51442 (68.0%)
Hypertension, n (%)	223 (33.0%)	1492 (19.5%)	17179 (22.7%)
Cardiovascular Disease, n (%)	<100	304 (4.0%)	3946 (5.2%)
Type 2 Diabetes, n (%)	144 (21.3%)	637 (8.3%)	7219 (9.5%)
Chronic kidney disease, n (%)	<100	<100	1251 (1.7%)
Asthma, n (%)	145 (21.5%)	1130 (14.8%)	10747 (14.2%)
COPD, n (%)	<100	140 (1.8%)	2153 (2.8%)
UK Biobank			
Total N	1268	735	453835
AFR ancestry, n (%)	74 (5.8%)	41 (5.6%)	9305 (2.1%)
EUR ancestry, n (%)	1145 (90.3%)	652 (88.7%)	434038 (95.6%)
SAS ancestry, n (%)	49 (3.9%)	42 (5.7%)	10492 (2.3%)
Average Age, y (% >60y)	62 (57%)	50 (23%)	57 (36%)
Female, n (%)	544 (40.5%)	451 (58.0%)	260908 (55.3%)
Hypertension, n (%)	626 (46.6%)	193 (24.8%)	109878 (23.2%)
Cardiovascular Disease, n (%)	185 (13.7%)	44 (5.6%)	27758 (5.8%)
Type 2 Diabetes, n (%)	267 (18.7%)	74 (9.5%)	32594 (6.9%)
Chronic kidney disease, n (%)	77 (5.7%)	15 (1.9%)	7188 (1.5%)
Asthma, n (%)	217 (16.1%)	123 (15.8%)	67210 (14.2%)
COPD, n (%)	137 (10.2%)	22 (2.8%)	11703 (2.4%)
GHS			
Total N	165	689	112877
EUR ancestry, n (%)	165 (100%)	689 (100%)	112877 (100%)
Average Age, y (% >60y)	65.8 (71.5%)	53.6 (36.4%)	55.2 (42.7%)
Female, n (%)	101 (56.4%)	510 (67.1%)	76314 (62.8%)
Hypertension, n (%)	138 (77.1%)	381 (50.1%)	58857 (48.5%)

Cardiovascular Disease, n (%)	76 (42.5%)	117 (15.4%)	18580 (15.3%)
Type 2 Diabetes, n (%)	77 (43.0%)	177 (23.3%)	26200 (21.6%)
Chronic kidney disease, n (%)	69 (38.5%)	104 (13.7%)	15584 (12.8%)
Asthma, n (%)	16 (8.9%)	59 (7.78%)	7839 (6.5%)
COPD, n (%)	49 (27.4%)	73 (9.6%)	11802 (9.7%)
PMBB			
Total N	67	99	8738
AFR ancestry, n (%)	67 (100%)	99 (100%)	8738 (100%)
Average Age, y (% >60y)	62.58 (61.2%)	47.64 (19.2%)	56.74 (45.6%)
Female, n (%)	38 (56.7%)	72 (72.7%)	5495 (62.9%)
Hypertension, n (%)	59 (88.1%)	52 (52.5%)	5497 (62.9%)
Cardiovascular Disease, n (%)	40 (59.7%)	17 (17.2%)	2557 (29.3%)
Type 2 Diabetes, n (%)	50 (74.6%)	31 (31.3%)	2973 (34.1%)
Chronic kidney disease, n (%)	42 (62.7%)	13 (13.1%)	2093 (24.0%)
Asthma, n (%)	18 (26.9%)	23 (23.2%)	1762 (20.2%)
COPD, n (%)	20 (29.9%)	8 (8.1%)	1037 (11.9%)

Supplementary Table 3. Definitions used for the seven COVID-19 phenotypes analyzed.

Broad phenotype category	Phenotype	Case/control group	Definition			Sample size with genetic data				
			COVID-19 status	Hospitalized	Severe disease	AncestryDNA	UK Biobank	GHS	PMBB	Total
Risk of infection	COVID-19 positive vs. COVID-19 negative or unknown	Cases	Positive	Yes, No or NA	Yes, No or NA	8,333	2,003	854	166	11,356
		Controls	Negative or unknown	No or NA	No or NA	75,597	453,835	112,877	8,738	651,047
	COVID-19 positive vs. COVID-19 negative	Cases	Positive	Yes, No or NA	Yes, No or NA	8,333	2,003	854	166	11,356
		Controls	Negative	No or NA	No or NA	22,131	15,653	16,148	959	54,891
	COVID-19 positive and not hospitalized vs. COVID-19 negative or unknown	Cases	Positive	No	No	7,658	735	689	99	9,181
		Controls	Negative or unknown	No or NA	No or NA	75,597	453,835	112,877	8,738	651,047
	COVID-19 positive and hospitalized vs. COVID-19 negative or unknown	Cases	Positive	Yes (or death)	Yes, No or NA	675	1,268	165	67	2,175
		Controls	Negative or unknown	No or NA	No or NA	75,597	453,835	112,877	8,738	651,047
COVID-19 positive and severe vs. COVID-19 negative or unknown	Cases	Positive	Yes, No or NA	Yes	307	504	36	27	874	
	Controls	Negative or unknown	No or NA	No or NA	75,597	443,343	112,877	8,738	640,555	
Risk of adverse outcomes amongst infected individuals	COVID-19 positive and hospitalized vs. COVID-19 positive and not hospitalized	Cases	Positive	Yes (or death)	Yes, No or NA	675	1,145	165	67	2,052
		Controls	Positive	No	No	7,658	652	689	99	9,098
	COVID-19 positive and severe vs. COVID-19 positive and not hospitalized	Cases	Positive	Yes, No or NA	Yes	307	472	36	27	842
		Controls	Positive	No	No	7,658	652	689	99	9,098

Supplementary Table 4. Genomic inflation factor (lambda) across the seven COVID-19 phenotypes at

Index	Phenotype	Study	N cases	N controls	Total N	N variants	Lambda
1	COVID19 positive vs COVID19 negative or unknown	Meta-analysis	11356	651047	662403	23988898	1.012
		UKB 500K Genotyped EUR	1797	434038	435835	11528382	1.009
		GHS Freeze 145 EUR	854	112877	113731	10493220	1.012
		ANCESTRY Freeze Two EUR	6626	66335	72961	9101390	1.014
		UKB 500K Genotyped SAS	91	10492	10583	12206386	1.001
		UKB 500K Genotyped AFR	115	9305	9420	20335962	1.011
		UPENN Freeze One HRC AFR	166	8738	8904	17931891	0.983
		ANCESTRY Freeze Two AMR	1130	6366	7496	10295686	1.045
		ANCESTRY Freeze Two AFR	577	2896	3473	16485981	1.003
2	COVID19 positive vs COVID19 negative	Meta-analysis	11356	54891	66247	23551062	0.994
		ANCESTRY Freeze Two EUR	6626	19058	25684	9083691	1.028
		GHS Freeze 145 EUR	854	16148	17002	10447535	1.003
		UKB 500K Genotyped EUR	1797	14839	16636	11468258	1.038
		ANCESTRY Freeze Two AMR	1130	2041	3171	10268736	1.043
		ANCESTRY Freeze Two AFR	577	1032	1609	16341768	0.986
		UPENN Freeze One HRC AFR	166	959	1125	17367888	0.980
		UKB 500K Genotyped SAS	91	426	517	11415240	0.860
		UKB 500K Genotyped AFR	115	388	503	19047316	0.917
3	COVID19 positive not hospitalized vs COVID19 negative or unknown	Meta-analysis	9181	651047	660228	23985875	1.031
		UKB 500K Genotyped EUR	652	434038	434690	11528319	1.008
		GHS Freeze 145 EUR	689	112877	113566	10493176	1.013
		ANCESTRY Freeze Two EUR	6104	66335	72439	9100850	1.024
		UKB 500K Genotyped SAS	42	10492	10534	12205146	1.040
		UKB 500K Genotyped AFR	41	9305	9346	20332630	1.075
		UPENN Freeze One HRC AFR	99	8738	8837	17925812	0.977
		ANCESTRY Freeze Two AMR	1045	6366	7411	10292341	1.040
		ANCESTRY Freeze Two AFR	509	2896	3405	16481786	0.990
4	COVID19 positive hospitalized vs COVID19 negative or unknown	Meta-analysis	2175	651047	653222	23990017	1.035
		UKB 500K Genotyped EUR	1145	434038	435183	11528367	1.010
		GHS Freeze 145 EUR	165	112877	113042	10492982	0.970
		ANCESTRY Freeze Two EUR	522	66335	66857	9097104	0.998
		UKB 500K Genotyped SAS	49	10492	10541	12205345	1.049
		UKB 500K Genotyped AFR	74	9305	9379	20334342	1.024
		UPENN Freeze One HRC AFR	67	8738	8805	17868390	1.103
		ANCESTRY Freeze Two AMR	<100	6366	NA	10241678	0.990
		ANCESTRY Freeze Two AFR	<100	2896	NA	16454783	0.984
	COVID19 positive severe	Meta-analysis	838	527678	528516	22717856	1.003
		UKB 500K Genotyped EUR	472	434038	434510	11528295	1.014
		ANCESTRY Freeze Two EUR	236	66335	66571	9096792	0.992

5	vs COVID19 negative or unknown	UKB 500K Genotyped AFR	32	9305	9337	20332102	1.039
		UPENN Freeze One HRC AFR	27	8738	8765	17920931	0.962
		ANCESTRY Freeze Two AMR	<100	6366	NA	10240657	0.928
		ANCESTRY Freeze Two AFR	<100	2896	NA	16452305	0.981
6	COVID19 positive hospitalized vs COVID19 positive not hospitalized	Meta-analysis	2175	9181	11356	21151462	0.905
		ANCESTRY Freeze Two EUR	522	6104	6626	9043524	1.006
		UKB 500K Genotyped EUR	1145	652	1797	11342868	1.067
		ANCESTRY Freeze Two AMR	<100	1045	NA	10150288	0.932
		GHS Freeze 145 EUR	165	689	854	10228898	0.842
		ANCESTRY Freeze Two AFR	<100	509	NA	15854994	0.903
		UPENN Freeze One HRC AFR	67	99	166	12127522	0.702
		UKB 500K Genotyped AFR	74	41	115	12995273	0.388
		UKB 500K Genotyped SAS	49	42	91	8249617	0.246
7	COVID19 positive severe vs COVID19 positive not hospitalized	Meta-analysis	874	9139	10013	20726690	0.875
		ANCESTRY Freeze Two EUR	236	6104	6340	9042185	0.987
		UKB 500K Genotyped EUR	472	652	1124	11279899	1.013
		ANCESTRY Freeze Two AMR	<100	1045	NA	10146032	0.912
		GHS Freeze 145 EUR	36	689	725	10193407	0.749
		ANCESTRY Freeze Two AFR	<100	509	NA	15739864	0.793
		UPENN Freeze One HRC AFR	27	99	126	11135122	0.750
		UKB 500K Genotyped AFR	32	41	73	11037601	0.499

Supplementary Table 5. Eight variants associated with COVID-19 susceptibility in previous GWAS.

Locus index	Independent signal index	Reference	First author	Phenotype	rs ID	hg38	Nearest gene	Effect allele	Locus	Odds Ratio	LCI	UCI	P-value	N cases	N controls	Top independent association in locus
1	1	https://www.medrxiv.org/content/10.1101/2020.09.24.20200048v2	Pairo-Castineira	covid19 severe vs negative or unknown	rs73064425	3:45859597:C:T	<i>LZTF1</i>	T	3p21.31	2.14	1.88	2.45	4.77E-30	1676	8380	1
1	2	https://www.medrxiv.org/content/10.1101/2020.09.04.20188318v1	Shelton	covid test positive vs negative	rs2531743	3:45796808:G:A	<i>SLC6A20</i>	G	3p21.31	0.917	0.89	0.94	7.60E-10	12972	101268	1
2	1	https://www.medrxiv.org/content/10.1101/2020.09.24.20200048v2	Pairo-Castineira	covid19 severe vs negative or unknown	rs143334143	6:31153649:G:A	<i>CCHCR1</i>	A	6p21.33	1.85	1.61	2.13	8.82E-18	1676	8380	1
3	1	https://www.medrxiv.org/content/10.1101/2020.09.04.20188318v1	Shelton	covid test positive vs negative	rs9411378	9:133270015:A:C	<i>ABO</i>	C	9q34.2	0.857	0.83	0.89	5.30E-20	12972	101268	1
4	1	https://www.medrxiv.org/content/10.1101/2020.09.24.20200048v2	Pairo-Castineira	covid19 severe vs negative or unknown	rs10735079	12:112942203:G:A	<i>OAS3</i>	A	12q24.13	1.29	1.18	1.42	1.65E-08	1676	8380	1
5	1	https://www.medrxiv.org/content/10.1101/2020.09.24.20200048v2	Pairo-Castineira	covid19 severe vs negative or unknown	rs2109069	19:4719431:G:A	<i>DPP9</i>	A	19p13.3	1.36	1.25	1.48	3.98E-12	1676	8380	1
6	1	https://www.medrxiv.org/content/10.1101/2020.09.24.20200048v2	Pairo-Castineira	covid19 severe vs negative or unknown	rs74956615	19:10317045:T:A	<i>RAVER1</i>	A	19p13.2	1.59	1.35	1.87	2.31E-08	1676	8380	1
7	1	https://www.medrxiv.org/content/10.1101/2020.09.24.20200048v2	Pairo-Castineira	covid19 severe vs negative or unknown	rs2236757	21:33252612:A:G	<i>JENAR2</i>	A	21q22.1	1.28	1.17	1.41	5.00E-08	1676	8380	1

Supplementary Table 6. Association between eight published risk variants for COVID-19 and five disease susceptibility phenotypes. P-values in red were significant after correcting for the 40 tests performed (P<0.00125).

Locus, nearest gene	rs ID	hg38	Phenotype	Effect allele	Odds Ratio [95% CI]	P-value	N cases with 0/1/2 copies of the effect allele	N controls with 0/1/2 copies of the effect allele	Effect allele frequency	N cases	N controls	Heterozygote Odds Ratio [95% CI]	Homozygote Odds Ratio [95% CI]
3p21.31 SLC6A20	rs2531743	3:45796808:G:A	COVID19 positive vs COVID19 negative	A	1.056[1.023,1.091]	8.99E-04	1829 551 14016	9694 26714 18483	0.583	11356	54891	0.965[0.843,1.104]	1.016[0.883,1.169]
			COVID19 positive vs COVID19 negative or unknown	A	1.048[1.018,1.079]	1.66E-03	1829 551 14016	110087 316587 224373	0.588	11356	651047	0.961[0.846,1.09]	1.009[0.883,1.152]
			COVID19 positive not hospitalized vs COVID19 negative or unknown	A	1.042[1.009,1.077]	1.22E-02	1462 4495 3224	110087 316587 224373	0.588	9181	651047	0.935[0.764,1.145]	0.829[0.666,1.031]
			COVID19 positive hospitalized vs COVID19 negative or unknown	A	1.058[0.993,1.127]	8.40E-02	367 1016 792	110087 316587 224373	0.588	2175	651047	0.977[0.831,1.149]	1.125[0.952,1.33]
			COVID19 positive severe vs COVID19 negative or unknown	A	1.052[0.950,1.165]	3.32E-01	142 399 297	88701 256292 182685	0.589	838	527678	1.061[0.821,1.37]	1.197[0.918,1.561]
3p21.31 LZTF1	rs73064425	3:45859597:C:T	COVID19 positive hospitalized vs COVID19 negative or unknown	T	1.423[1.280,1.583]	6.89E-11	1772 378 25	559483 87535 4029	0.074	2175	651047	1.387[1.19,1.617]	1.324[0.629,2.788]
			COVID19 positive severe vs COVID19 negative or unknown	T	1.604[1.357,1.896]	3.09E-08	674 155 9	458181 66932 2565	0.068	838	527678	1.626[1.296,2.039]	1.416[0.454,4.414]
			COVID19 positive vs COVID19 negative or unknown	T	1.103[1.047,1.161]	2.35E-04	9647 1627 82	559483 87535 4029	0.074	11356	651047	1.188[1.044,1.351]	1.173[0.629,2.188]
			COVID19 positive vs COVID19 negative	T	1.100[1.038,1.165]	1.28E-03	9647 1627 82	47091 7439 361	0.075	11356	54891	1.194[1.041,1.37]	1.045[0.541,2.02]
			COVID19 positive not hospitalized vs COVID19 negative or unknown	T	1.025[0.966,1.088]	4.11E-01	7875 1249 57	559483 87535 4029	0.073	9181	651047	0.862[0.678,1.096]	0.927[0.298,2.884]
6p21.33 CCHCR1	rs143334143	6:31153649:G:A	COVID19 positive severe vs COVID19 negative or unknown	A	1.362[1.142,1.624]	5.82E-04	686 143 9	458542 66524 2612	0.068	838	527678	1.28[1.001,1.636]	1.831[0.683,4.906]
			COVID19 positive hospitalized vs COVID19 negative or unknown	A	1.180[1.053,1.323]	4.46E-03	1820 332 23	560452 86962 3633	0.072	2175	651047	1.159[0.984,1.365]	1.49[0.742,2.92]
			COVID19 positive vs COVID19 negative or unknown	A	1.028[0.978,1.080]	2.81E-01	9463 1807 86	560452 86962 3633	0.073	11356	651047	1.086[0.95,1.241]	1.058[0.549,2.039]
			COVID19 positive vs COVID19 negative	A	1.030[0.974,1.089]	2.94E-01	9463 1807 86	4642381 10 358	0.082	11356	54891	1.082[0.938,1.247]	1.118[0.556,2.247]
			COVID19 positive not hospitalized vs COVID19 negative or unknown	A	0.998[0.945,1.055]	9.49E-01	7643 1475 63	560452 86962 3633	0.073	9181	651047	0.96[0.761,1.211]	0.318[0.045,2.264]
9q34.2 ABO	rs9411378	9:133270015:A:C	COVID19 positive vs COVID19 negative or unknown	C	0.892[0.861,0.925]	5.68E-10	616 3980 5906	28672 192655 316843	0.767	10502	538170	0.818[0.675,0.992]	0.799[0.663,0.963]
			COVID19 positive not hospitalized vs COVID19 negative or unknown	C	0.891[0.855,0.927]	2.00E-08	485 3247 4760	28672 192655 316843	0.767	8492	538170	0.96[0.688,1.34]	0.874[0.631,1.211]
			COVID19 positive vs COVID19 negative	C	0.914[0.878,0.952]	1.41E-05	616 3980 5906	2200 13988 22555	0.760	10502	38743	0.87[0.709,1.068]	0.867[0.711,1.058]
			COVID19 positive hospitalized vs COVID19 negative or unknown	C	0.898[0.831,0.972]	7.66E-03	131 733 1146	28672 192655 316843	0.768	2010	538170	0.75[0.592,0.949]	0.763[0.607,0.958]
			COVID19 positive severe vs COVID19 negative or unknown	C	0.910[0.804,1.029]	1.33E-01	51 309 478	28405 189752 309521	0.766	838	527678	0.933[0.63,1.381]	0.889[0.606,1.303]
12q24.13 OAS3	rs10735079	12:112942203:G:A	COVID19 positive vs COVID19 negative or unknown	A	1.027[0.997,1.057]	7.40E-02	1342 5061 4953	84999 298664 267384	0.640	11356	651047	1.145[0.989,1.326]	1.108[0.954,1.287]
			COVID19 positive hospitalized vs COVID19 negative or unknown	A	1.049[0.985,1.118]	1.39E-01	252 967 956	84999 298664 267384	0.640	2175	651047	1.094[0.913,1.31]	1.038[0.863,1.248]
			COVID19 positive vs COVID19 negative	A	1.021[0.988,1.055]	2.11E-01	1342 5061 4953	7006 2501 322872	0.647	11356	54891	1.13[0.968,1.32]	1.118[0.954,1.309]
			COVID19 positive not hospitalized vs COVID19 negative or unknown	A	1.019[0.987,1.053]	2.50E-01	1090 4094 3997	84999 298664 267384	0.640	9181	651047	1.249[0.97,1.608]	1.248[0.966,1.613]
			COVID19 positive severe vs COVID19 negative or unknown	A	1.001[0.904,1.109]	9.85E-01	103 379 356	69087 241997 216594	0.640	838	527678	1.163[0.875,1.546]	1.066[0.796,1.427]
19p13.3 DPP9	rs2109069	19:4719431:G:A	COVID19 positive vs COVID19 negative or unknown	A	1.061[1.030,1.094]	1.14E-04	5453 4796 1107	308052 278615 64380	0.313	11356	651047	1.103[1.003,1.214]	1.196[1.029,1.389]
			COVID19 positive hospitalized vs COVID19 negative or unknown	A	1.126[1.056,1.202]	3.10E-04	1005 920 250	308052 278615 64380	0.313	2175	651047	1.147[1.017,1.293]	1.229[1.018,1.482]
			COVID19 positive vs COVID19 negative	A	1.050[1.016,1.086]	4.05E-03	5453 4796 1107	26492 23154 5245	0.307	11356	54891	1.127[1.018,1.247]	1.189[1.013,1.394]
			COVID19 positive not hospitalized vs COVID19 negative or unknown	A	1.041[1.006,1.076]	2.12E-02	4448 3876 857	308052 278615 64380	0.313	9181	651047	1.032[0.88,1.209]	1.142[0.891,1.464]
			COVID19 positive severe vs COVID19 negative or unknown	A	1.114[1.003,1.236]	4.35E-02	389 352 97	247274 226991 53413	0.316	838	527678	1.13[0.938,1.361]	1.21[0.903,1.621]
19p13.2 RAVER1	rs74956615	19:10317045:T:A	COVID19 positive hospitalized vs COVID19 negative or unknown	A	1.146[0.996,1.319]	5.68E-02	1954 214 7	585478 63808 1761	0.052	2175	651047	1.021[0.846,1.232]	1.196[0.447,3.199]
			COVID19 positive severe vs COVID19 negative or unknown	A	1.241[0.992,1.553]	5.89E-02	748 87 3	474063 52156 1459	0.052	838	527678	1.106[0.833,1.468]	1.463[0.364,5.875]
			COVID19 positive vs COVID19 negative or unknown	A	1.028[0.962,1.100]	4.11E-01	10333 994 29	585478 63808 1761	0.052	11356	651047	0.988[0.848,1.149]	0.947[0.393,2.282]
			COVID19 positive vs COVID19 negative	A	1.031[0.958,1.110]	4.19E-01	10333 994 29	49647 5095 149	0.049	11356	54891	0.999[0.851,1.173]	0.808[0.322,2.026]
			COVID19 positive not hospitalized vs COVID19 negative or unknown	A	1.000[0.927,1.078]	1.00E+00	8379 780 22	585478 63808 1761	0.052	9181	651047	0.93[0.719,1.203]	0.517[0.073,3.676]
21q22.1 IFNAR2	rs2236757	21:33252612:A:G	COVID19 positive hospitalized vs COVID19 negative or unknown	G	0.882[0.826,0.942]	1.90E-04	2209 1810 37	53504 264441 333102	0.715	2175	651047	0.984[0.794,1.22]	0.901[0.728,1.113]
			COVID19 positive vs COVID19 negative or unknown	G	0.947[0.919,0.976]	4.50E-04	1090 4751 5515	53504 264441 333102	0.714	11356	651047	1.006[0.846,1.196]	0.919[0.774,1.09]
			COVID19 positive severe vs COVID19 negative or unknown	G	0.834[0.752,0.925]	6.33E-04	85 364 389	41990 212771 272917	0.719	838	527678	0.972[0.703,1.344]	0.799[0.578,1.103]
			COVID19 positive vs COVID19 negative	G	0.958[0.926,0.991]	1.22E-02	1090 4751 5515	4676 22547 27668	0.707	11356	54891	1.014[0.845,1.218]	0.916[0.765,1.098]
			COVID19 positive not hospitalized vs COVID19 negative or unknown	G	0.965[0.932,0.998]	3.70E-02	870 3833 4478	53504 264441 333102	0.714	9181	651047	1.046[0.782,1.399]	0.952[0.714,1.27]

Supplementary Table 7. Comparison of effect sizes between ancestries for the six published risk variants that were validated in this study.

rs ID	hg38	Effect allele	Phenotype	Ancestry	Odds Ratio	95% LCI	95% UCI	P-value	N cases with 0 1 2 copies of the effect allele	N controls with 0 1 2 copies of the effect allele	Effect allele frequency
rs2531743	3:45796808:G:A	A	COVID19 positive vs COVID19 negative	AFR	1.072	0.944	1.218	0.2828	190 455 213	598 1225 556	0.497
				EUR	1.046	1.010	1.083	0.0113	1499 4525 3253	8764 24352 16929	0.584
rs73064425	3:45859597:C:T	T	COVID19 positive hospitalized vs COVID19 negative or unknown	AFR	0.707	0.292	1.712	0.4422	205 4 0	20400 538 1	0.013
				AMR	1.041	0.541	2.002	0.9041	<100	5717 629 <100	0.053
				EUR	1.469	1.314	1.642	1.33E-11	1464 349 19	527473 82482 3295	0.073
				SAS	1.159	0.730	1.839	0.5323	26 18 5	5868 3913 711	0.254
				AFR	2.131	1.217	3.729	0.0081	76 19 0	18816 2056 67	0.053
rs143334143	6:31153649:G:A	A	COVID19 positive severe vs COVID19 negative or unknown	AMR	1.075	0.485	2.382	0.8586	<100	4985 1287 <100	0.116
				EUR	1.310	1.083	1.584	0.0055	583 116 9	434741 63181 2451	0.068
				AFR	0.840	0.719	0.982	0.0283	28 229 435	354 3442 8405	0.828
rs9411378	9:133270015:A:C	C	COVID19 positive vs COVID19 negative or unknown	AMR	0.868	0.761	0.991	0.0363	<100 367 721	224 1954 4188	0.823
				EUR	0.900	0.866	0.936	1.43E-07	534 3280 4609	27335 181077 291961	0.764
				SAS	0.982	0.635	1.520	0.9362	2 25 64	267 2903 7322	0.845
				AFR	1.080	0.954	1.223	0.2228	509 293 56	12822 7078 1039	0.219
rs2109069	19:4719431:G:A	A	COVID19 positive vs COVID19 negative or unknown	AMR	1.105	0.988	1.236	0.0811	610 440 <100	3517 2411 438	0.260
				EUR	1.054	1.020	1.088	0.0015	4284 4028 965	285171 265656 62423	0.318
				SAS	1.366	0.949	1.964	0.0930	50 35 6	6537 3473 482	0.211
				AFR	1.054	0.834	1.333	0.6596	13 66 130	1053 7215 12671	0.777
rs2236757	21:33252612:A:G	G	COVID19 positive hospitalized vs COVID19 negative or unknown	AMR	0.618	0.462	0.827	0.0012	<100	875 2951 2540	0.629
				EUR	0.890	0.829	0.956	0.0014	174 788 870	49815 249137 314298	0.716
				SAS	0.723	0.482	1.085	0.1175	14 19 16	1753 4955 3784	0.596
				AFR	1.054	0.834	1.333	0.6596	13 66 130	1053 7215 12671	0.777

Supplementary Table 8. Association between a COVID-19 severity score and seven variants (four known, three novel) associated with both disease risk and severity.

Locus	Nearest gene	rs ID	Effect Allele	Novelty	Association with COVID-19 severity continuous phenotype		
					Beta (SD in severity score)	SE	P-Value
3p21.31	<i>LZTFL1</i>	rs73064425	T	Validated and associated with disease severity	0.19	0.038	4.45E-07
5q34	<i>CCNG1</i>	rs79833209	T	Novel	0.18	0.077	0.017
19p13.3	<i>DPP9</i>	rs2109069	A	Validated and associated with disease severity	0.05	0.022	0.028
21q22.1	<i>IFNAR2</i>	rs2236757	A	Validated and associated with disease severity	0.05	0.022	0.032
16q24.3	<i>ACSF3</i>	rs4782327	G	Novel	0.05	0.025	0.033
19q13.41	<i>FPR1</i>	rs12461764	G	Novel	0.04	0.021	0.055
6p21.33	<i>CCHCR1</i>	rs143334143	A	Validated and associated with disease severity	0.04	0.035	0.216
3p21.31	<i>SLC6A20</i>	rs2531743	A	Validated	0.01	0.022	0.551
9q34.2	<i>ABO</i>	rs9411378	A	Validated	0.01	0.026	0.565

Supplementary Table 9. Missense or predicted loss-of-function variants in high linkage disequilibrium (LD, $r^2 > 0.95$) with sentinel GWAS variants.

Locus	Sentinel GWAS variant			Missense or pLOF in high LD with lead variant				
	rs ID	hg38	Nearest gene	Gene	rs ID	hg38	r2 with sentinel GWAS variant	Variant effect
21q22.1	rs13050728	21:33242905:T:C	<i>IFNAR2</i>	<i>IFNAR2</i>	rs1051393	21:33241950:T:G	1.00	Missense:Phe10Val
					rs1131668	21:33262573:G:A	0.97	Missense:Ala285Thr
6p21.33	rs143334143	6:31153649:G:A	<i>CCHCR1</i>	<i>CCHCR1</i>	rs130072	6:31144707:C:T	1.00	Missense:Arg716Gln
					rs11540822	6:31151121:A:T	0.99	Missense:Leu268Gln
					rs72856718	6:31157480:C:A	1.00	stop_gained:Glu41X
				<i>TCF19</i>	rs2073724	6:31161930:C:T	1.00	Missense:Pro241Leu

Supplementary Table 10. Published gene expression datasets used to identify sentinel expression quantitative trait loci (eQTL) that co-localized (LD $r^2 > 0.95$) with sentinel GWAS variants.

First author	PMID	Tissue/cell type	Sample size
Alasoo	29379200	MACROPHAGES-IFNg	86
		MACROPHAGES-IFNg-salmonella	86
		MACROPHAGES-naive	86
		MACROPHAGES-salmonella	86
Andiappan	26259071	NEUTROPHILS	114
Barreiro	22233810	DENDRITIC-NotInfected	65
		DENDRITIC-TBInfected	65
Battle	24092820	WHOLE-BLOOD	922
		WHOLE-BLOOD-ase	922
		WHOLE-BLOOD-splice	922
Brown	29058714	LCLS	506
		SKIN	471
		WHOLE-BLOOD	242
Brumpton	27155841	LCLS	356
Caliskan	25874939	PBMCS-baseline	98
		PBMCS-rhinovirus	98
		PBMCS-rhinovirus-rcQTL	98
Chen	27863251	CD4TCELLS	Up to 197
		MONOCYTES	Up to 197
		NEUTROPHILS	Up to 197
Chiang	28369037	LUNG	Up to 147
		SKIN	Up to 147
		WHOLEBLOOD	Up to 147
Davenport 2016	26917434	LEUCOCYTES	265
Davenport 2018	30340504	WHOLEBLOOD	157
		WHOLEBLOOD-IFN-interaction	157
Dimas	19644074	LCLS	75
		TCELLS	75
Di Narzo	27336838	WHOLE-BLOOD	149
Ding	21129726	LESIONAL-SKIN	57
		NORMAL-SKIN	53
		UNINVOLVED-SKIN	53
Dixon	17873877	LCLS	400
Fairfax 2012	22446964	BCELLS	283
		MONOCYTES	283
Fairfax 2014	24604202	MONOCYTES-IFN	367
		MONOCYTES-LPS2	261
		MONOCYTES-LPS24	322
		MONOCYTES-NAIVE	414
Fehrmann	21829388	WHOLE-BLOOD	1469
Ferraro	24610777	Tconv	65
		Tregs	65
Franco	23878721	WHOLE-BLOOD-Influenza	247
Lappalainen	24037378	LCLS	373
Grundberg	22941192	LCLS	856
		SKIN	856
GTEX v8	32912332	49 individual tissues	73-706
Hao	23209423	LUNG	1111
Huang	25951796	LCLs	368
		PBMCS	240
		SKIN	110
Jansen	28165122	WHOLE-BLOOD	4896
Joahnes	28122634	WHOLE-BLOOD	5257
Kasela	28248954	CD4TCELLS	293
		CD8TCELLS	293
KimHellmuth	28814792	MONOCYTES-LPS6H	134
		MONOCYTES-LPS90	134
		MONOCYTES-MDP6H	134
		MONOCYTES-MDP90	134
		MONOCYTES-RNA6H	134

Kim	25327457	MONOCYTES-Baseline	137
		MONOCYTES-Differential	137
		MONOCYTES-LPS	137
Kukurba	27197214	WHOLE-BLOOD	922
Lee	24604203	DENDRITIC-Baseline	528
		DENDRITIC-Flu	342
		DENDRITIC-Flu-delta	342
		DENDRITIC-IFNb	284
		DENDRITIC-IFNb-delta	284
		DENDRITIC-LPS	356
		DENDRITIC-LPS-delta	356
LloydJones	28065468	WHOLE-BLOOD	2765
Luo	26102239	SMALL-AIRWAYS	105
Momozawa	29930244	BCELLS	323
		CD4TCELLS	323
		CD8TCELLS	323
		GRANULOCYTES	323
		MONOCYTES	323
Murphy	20833654	CD4-TCELLS	200
Naranbhai	26151758	NEUTROPHILS	101
Nedelec	27768889	MACROPHAGES-baseline	95
		MACROPHAGES-baseline-asQTL	95
		MACROPHAGES-listeria	95
		MACROPHAGES-listeria-asQTL	95
		MACROPHAGES-listeria-reQTL	95
		MACROPHAGES-salmonella	95
		MACROPHAGES-salmonella-asQTL	95
MACROPHAGES-salmonella-reQTL	95		
Pala	28394350	LEUCOCYTES	624
Peters	27015630	BCELLS	80
		CD4-TCELLS	121
		CD8-TCELLS	108
		MONOCYTES	124
		NEUTROPHILS	121
Qiu 2011	21949713	SPUTUM	131
Qiu 2014	24770851	LCLS-steroids	117
Quach	27768888	MONOCYTES-baseline	100
		MONOCYTES-IAV	100
		MONOCYTES-LPS	100
		MONOCYTES-Pam3CSK4	100
		MONOCYTES-R848	100
Raj	24786080	CD4-TCELLS	407
		MONOCYTES	401
vanderWijst	29610479	BCELLS	45
		CD4TCELLS	45
		CD8TCELLS	45
		DENDRITIC	45
		MONOCYTES	45
		MONOCYTES-classical	45
		MONOCYTES-nonclassical	45
		NKCELLS	45
		PBMCS	45
		Vosa	BioRxiv
Walsh	27140173	WHOLE-BLOOD	377
Westra	24013639	WHOLE-BLOOD	5311
Yao	28285768	WHOLEBLOOD	5257
Ye	25214635	CD4-TCELLS-48h328	348
		CD4-TCELLS-48hTh17	348
		CD4-TCELLS-4h328	348
		CD4-TCELLS-4hIFNb	348
		CD4-TCELLS-UNST	348
Zeller	20502693	MONOCYTES	1490
Zhemakova	27918533	WHOLEBLOOD-exon-primary	2116
		WHOLEBLOOD-exonratio-primary	2116
		WHOLEBLOOD-gene-primary	2116
		WHOLEBLOOD-polyAratio-primary	2116

Supplementary Table 11. Expression quantitative trait loci (eQTL) that co-localized (LD $r^2 > 0.95$) with sentinel GWAS variants.

Sentinel GWAS variant				Sentinel eQTL												
Locus	rs ID	hg38	Disease predisposing allele	rs ID	hg38	Gene	eQTL dataset	P-value	Effect allele	Reference allele	Effect	r2 with sentinel GWAS variant	Allele in phase with disease predisposing allele			
3p21.31	rs73064425	3:45859597:C:T	T	rs17763537	3:45801823:C:T	<i>SLC6A20</i>	Hao Lung	1.00E-16	C	T	-9.320	0.961	T			
21q22.1	rs13050728	21:33242905:T:C	T	rs12482556	21:33230629:T:C	<i>IFNAR2</i>	Momozawa CD4Tcells	1.54E-16	C	T	-0.147	0.969	C			
				rs2834158	21:33244908:T:C	<i>IFNAR2</i>	Fairfax Monocytes IFN	2.22E-13	NA	NA	NA	0.969	T			
				rs17860115	21:33230000:C:A	<i>IFNAR2</i>	Fairfax Monocytes naive	1.84E-20	NA	NA	NA	0.960	A			
							Huang PBMCs	5.92E-20	C	A	0.678	0.960	A			
							Hao Lung	1.00E-16	C	A	11.000	0.960	A			
							Momozawa Monocytes	4.09E-11	A	C	-0.118	0.960	A			
							rs2834163	21:33248146:G:A	<i>IFNAR2</i>	GTeXv8 Muscle Skeletal	1.01E-15	A	G	-0.239	0.951	G
6p21.33	rs143334143	6:31153649:G:A	A	rs130072	6:31144707:C:T	<i>TCF19</i>	Yao Whole Blood	2.14E-96	C	T	-0.092	1.000	T			
				rs112279190	6:31155370:C:T	<i>TCF19</i>	GTeXv8 Artery Aorta	2.14E-22	T	C	1.019	1.000	T			
				rs17197087	6:31158455:C:T	<i>TCF19</i>	GTeXv8 Brain Hypothalamus	8.32E-17	T	C	1.383	0.962	T			
				rs17197087	6:31158455:C:T	<i>TCF19</i>	GTeXv8 Muscle Skeletal	6.93E-14	T	C	0.474	0.962	T			
							GTeXv8 Brain Frontal Cortex BA9	6.53E-10	T	C	0.961	0.962	T			
							Zhemakova Whole Blood gene	4.90E-156	T	C	26.612	0.962	T			
							GTeXv8 Brain Caudate basal ganglia	4.73E-10	T	C	1.020	0.962	T			
							GTeXv8 Pituitary	4.58E-22	T	C	1.108	0.962	T			
							Ratnapryia Retina	4.25E-30	T	C	1.371	0.962	T			
							GTeXv8 Brain Cortex	3.28E-22	T	C	1.142	0.962	T			
							GTeXv8 Brain Cerebellar Hemisphere	1.95E-17	T	C	1.215	0.962	T			
							Joehanes Whole Blood	1.61E-98	C	T	-0.091	0.962	T			
							Chen CD4Tcells	1.35E-18	T	C	1.820	0.962	T			
							GTeXv8 Brain Amygdala	1.14E-09	T	C	1.241	0.962	T			
							rs17197101	6:31158632:G:T	<i>TCF19</i>	Davenport Whole Blood	1.50E-36	T	G	0.438	0.962	T
				rs114881571	6:31160828:C:T	<i>TCF19</i>	Walsh Whole Blood	2.54E-15	NA	NA	NA	0.962	T			
							Pala Leucocytes	2.95E-49	G	T	-1.648	0.962	T			
							Battle Whole Blood	3.43E-99	NA	NA	NA	0.962	T			
							rs72863830	6:31221764:G:A	<i>TCF19</i>	Jansen Whole Blood	1.20E-35	T	C	0.416	1.000	T
							GTeXv8 Whole Blood	9.62E-19	A	G	0.324	0.960	A			

Supplementary Table 12. Association between a four-SNP genetic risk score (GRS) and risk of hospitalization among COVID-19 cases

Population, total N COVID-19 cases	GRS Group	Risk of hospitalization among COVID-19 cases (N positive and hospitalized / N positive) x 100		Unadjusted Risk Difference	Adjusted Odds Ratio*				
		Highest GRS group	Rest of Population		Estimate	SE	LCI	UCI	P-value
European (EUR) ancestry									
AncestryDNA EUR N=6,626	Top 40% vs Rest of population	10.3	6.28	4.02	1.65	0.096	1.37	1.99	1.5E-07
	Top 30% vs Rest of population	10.84	6.71	4.13	1.65	0.099	1.35	2	4.9E-07
	Top 20% vs Rest of population	11.9	6.88	5.03	1.77	0.106	1.44	2.18	6.9E-08
	Top 10% vs Rest of population	13.81	7.25	6.57	1.96	0.133	1.5	2.53	4.5E-07
	Top 5% vs Rest of population	15.99	7.47	8.52	2.27	0.172	1.61	3.16	1.7E-06
GHS EUR N=854	Top 40% vs Rest of population	18.42 (63/342)	19.92 (102/512)	-1.5	1.37	0.238	0.86	2.19	0.186
	Top 30% vs Rest of population	21.48 (55/256)	18.39 (110/598)	3.09	1.87	0.250	1.14	3.05	0.013
	Top 20% vs Rest of population	22.22 (38/171)	18.59 (127/683)	3.63	1.72	0.283	0.98	2.98	0.056
	Top 10% vs Rest of population	25.58 (22/86)	18.62 (143/768)	6.96	1.95	0.357	0.96	3.9	0.061
	Top 5% vs Rest of population	20.93 (9/43)	19.24 (156/811)	1.69	1.72	0.496	0.62	4.42	0.273
UKB EUR N=1,797	Top 40% vs Rest of population	67.10 (469/699)	61.57 (676/1098)	5.53	1.31	0.124	1.03	1.67	0.03
	Top 30% vs Rest of population	69.26 (356/514)	61.50 (789/1283)	7.76	1.63	0.138	1.25	2.15	3.8E-04
	Top 20% vs Rest of population	73.09 (239/327)	61.63 (906/1470)	11.46	1.95	0.166	1.41	2.71	6.0E-05
	Top 10% vs Rest of population	74.72 (133/178)	62.51 (1012/1619)	12.21	2.41	0.221	1.57	3.75	7.0E-05
	Top 5% vs Rest of population	75.56 (68/90)	63.09 (1077/1707)	12.46	2.29	0.301	1.29	4.22	6.0E-03
Meta-analysis EUR N=9,277	Top 40% vs Rest of population	NA			1.502	0.072	1.304	1.731	1.80E-08
	Top 30% vs Rest of population				1.662	0.077	1.430	1.931	3.42E-11
	Top 20% vs Rest of population				1.813	0.085	1.534	2.144	3.19E-12
	Top 10% vs Rest of population				2.060	0.109	1.664	2.549	3.02E-11
	Top 5% vs Rest of population				2.226	0.143	1.683	2.945	2.09E-08
African (AFR) ancestry									
AncestryDNA AFR N<1,000	Top 40% vs Rest of population	11.36	12.04	-0.68	Number of hospitalized cases too small for analysis (N<100)				
	Top 30% vs Rest of population	12.14	11.63	0.51					
	Top 20% vs Rest of population	12.07	11.71	0.36					
	Top 10% vs Rest of population	6.00	12.33	-6.33					
	Top 5% vs Rest of population	7.14	12.02	-4.88					
UKB AFR N=115	Top 40% vs Rest of population	55.26 (21/38)	68.83 (53/77)	-13.57	Number of hospitalized cases too small for analysis (N=74)				
	Top 30% vs Rest of population	54.29 (19/35)	68.75 (55/80)	-14.46					
	Top 20% vs Rest of population	59.09 (13/22)	65.59 (61/93)	-6.5					
	Top 10% vs Rest of population	83.33 (10/12)	62.14 (64/103)	21.2					
	Top 5% vs Rest of population	100.00 (5/5)	62.73 (69/110)	37.27					
PMBB AFR N=166	Top 40% vs Rest of population	43.94 (29/66)	38.00 (38/100)	5.94	Number of hospitalized cases too small for analysis (N=67)				
	Top 30% vs Rest of population	42.86 (21/49)	39.32 (46/117)	3.54					
	Top 20% vs Rest of population	42.42 (14/33)	39.85 (53/133)	2.57					
	Top 10% vs Rest of population	41.18 (7/17)	40.27 (60/149)	0.91					
	Top 5% vs Rest of population	44.44 (4/9)	40.13 (63/157)	4.32					
Admixed American (AMR) and South Asian (SAS) ancestries									
	Top 40% vs Rest of population	7.73	7.39	0.34					

AncestryDNA AMR N~1,000	Top 30% vs Rest of population	9.14	6.83	2.32	Number of hospitalized cases too small for analysis (N<100)
	Top 20% vs Rest of population	11.06	6.64	4.42	
	Top 10% vs Rest of population	11.5	7.08	4.42	
	Top 5% vs Rest of population	9.43	7.43	2.01	
UKB SAS N=91	Top 40% vs Rest of population	61.11 (22/36)	49.09 (27/55)	12.02	Number of hospitalized cases too small for analysis (N=49)
	Top 30% vs Rest of population	60.00 (15/25)	51.52 (34/66)	8.48	
	Top 20% vs Rest of population	61.11 (11/18)	52.05 (38/73)	9.06	
	Top 10% vs Rest of population	77.78 (7/9)	51.22 (42/82)	26.56	
	Top 5% vs Rest of population	75.00 (3/4)	52.87 (46/87)	22.13	
* Logistic regression model adjusted for age, sex, ancestry-informative PCs, REGENIE genome-wide predictor (to account for family structure) and clinical risk factors individually associated with risk of hospitalization in each study (see Methods for details).					

Supplementary Table 13. Association between a four-SNP genetic risk score (GRS) and risk of severe disease among COVID-19 cases

Population, total N COVID-19 cases	GRS Group	Risk of severe disease among COVID-19 cases (N positive and severe / N positive) x 100		Unadjusted Risk Difference	Adjusted Odds Ratio*				
		Highest GRS group	Rest of Population		Estimate	SE	LCI	UCI	P-value
European (EUR) ancestry									
AncestryDNA EUR N=6,626	Top 40% vs Rest of population	4.92	2.66	2.26	1.96	0.141	1.49	2.59	1.60E-06
	Top 30% vs Rest of population	5.45	2.82	2.63	1.96	0.142	1.48	2.59	2.40E-06
	Top 20% vs Rest of population	5.99	2.96	3.03	2.00	0.151	1.49	2.69	4.50E-06
	Top 10% vs Rest of population	6.12	3.29	2.83	1.78	0.195	1.21	2.61	3.20E-03
	Top 5% vs Rest of population	7.84	3.35	4.49	2.34	0.244	1.45	3.78	4.90E-04
GHS EUR N=854	Top 40% vs Rest of population	4.09 (14/342)	4.30 (22/512)	-0.20	Number of severe cases too small for analysis (N=36)				
	Top 30% vs Rest of population	4.30 (11/256)	4.18 (25/598)	0.12					
	Top 20% vs Rest of population	4.09 (7/171)	4.25 (29/683)	-0.15					
	Top 10% vs Rest of population	4.65 (4/86)	4.17 (32/768)	0.48					
	Top 5% vs Rest of population	4.65 (2/43)	4.19 (34/811)	0.46					
UKB EUR N=1,797	Top 40% vs Rest of population	30.33 (212/699)	23.68 (260/1098)	6.65	1.28	0.126	1.00	1.64	5.0E-02
	Top 30% vs Rest of population	31.71 (163/514)	24.08 (309/1283)	7.63	1.35	0.134	1.04	1.75	2.6E-02
	Top 20% vs Rest of population	32.42 (106/327)	24.90 (366/1470)	7.52	1.46	0.155	1.08	1.97	1.5E-02
	Top 10% vs Rest of population	34.83 (62/178)	25.32 (410/1619)	9.51	1.94	0.199	1.32	2.87	8.4E-04
	Top 5% vs Rest of population	38.89 (35/90)	25.60 (437/1707)	13.29	2.46	0.272	1.44	4.19	9.3E-04
Meta-analysis EUR N=9,277	Top 40% vs Rest of population	NA			1.53	0.093	1.28	1.84	4.2E-06
	Top 30% vs Rest of population				1.59	0.097	1.32	1.93	1.6E-06
	Top 20% vs Rest of population				1.70	0.108	1.37	2.09	9.5E-07
	Top 10% vs Rest of population				1.84	0.139	1.40	2.41	1.1E-05
	Top 5% vs Rest of population				2.36	0.181	1.65	3.36	2.1E-06
African (AFR) ancestry									
AncestryDNA AFR N<1,000	Top 40% vs Rest of population	5.91	6.44	-0.53	Number of severe cases too small for analysis (N<100)				
	Top 30% vs Rest of population	6.94	5.94	1.00					
	Top 20% vs Rest of population	7.76	5.86	1.90					
	Top 10% vs Rest of population	2.00	6.64	-4.64					
	Top 5% vs Rest of population	0.00	6.56	-6.56					
UKB AFR N=115	Top 40% vs Rest of population	23.68 (9/38)	29.87 (23/77)	-6.19	Number of severe cases too small for analysis (N=32)				
	Top 30% vs Rest of population	25.71 (9/35)	28.75 (23/80)	-3.04					
	Top 20% vs Rest of population	27.27 (6/22)	27.96 (26/93)	-0.68					
	Top 10% vs Rest of population	50.00 (6/12)	25.24 (26/103)	24.76					
	Top 5% vs Rest of population	60.00 (3/5)	26.36 (29/110)	33.64					
PMBB AFR N=166	Top 40% vs Rest of population	16.67 (11/66)	16.00 (16/100)	0.67	Number of severe cases too small for analysis (N=27)				
	Top 30% vs Rest of population	14.29 (7/49)	17.09 (20/117)	-2.81					
	Top 20% vs Rest of population	21.21 (7/33)	15.04 (20/133)	6.17					
	Top 10% vs Rest of population	29.41 (5/17)	14.77 (22/149)	14.65					
	Top 5% vs Rest of population	44.44 (4/9)	14.65 (23/157)	29.79					
Admixed American (AMR) and South Asian (SAS) ancestries									
	Top 40% vs Rest of population	2.5	3.48	-0.98					

AncestryDNA AMR N~1,000	Top 30% vs Rest of population	3.24	3.03	0.21	Number of severe cases too small for analysis (N<100)
	Top 20% vs Rest of population	3.98	2.88	1.11	
	Top 10% vs Rest of population	6.19	2.75	3.44	
	Top 5% vs Rest of population	5.66	2.97	2.69	
UKB SAS N=91	Top 40% vs Rest of population	22.22 (8/36)	12.73 (7/55)	9.49	Number of severe cases too small for analysis (N=15)
	Top 30% vs Rest of population	28.00 (7/25)	12.12 (8/66)	15.88	
	Top 20% vs Rest of population	38.89 (7/18)	10.96 (8/73)	27.93	
	Top 10% vs Rest of population	44.44 (4/9)	13.41 (11/82)	31.03	
	Top 5% vs Rest of population	50.00 (2/4)	14.94 (13/87)	35.06	

* Logistic regression model adjusted for age, sex, ancestry-informative PCs, REGENIE genome-wide predictor (to account for family structure) and clinical risk factors individually associated with risk of severe disease in each study (see Methods for details).

Supplementary Table 14. Association between a four-SNP genetic risk score (GRS) and risk of hospitalization and severe disease in individuals of European ancestry, after stratifying COVID-19 cases by the number of pre-existing clinical risk factors for severe COVID-19.

Population, total N COVID-19 cases	Number of established risk factors*	N COVID-19 cases	Risk among COVID-19 cases (N positive and [hospitalized or severe] / N positive) x 100		Unadjusted Risk Difference	Adjusted Odds Ratio**				
			Top 10% GRS	Rest of Population		Estimate	SE	LCI	UCI	P-value
Risk of hospitalization										
AncestryDNA EUR N=6,626	0 to 2	6,073	12.31	6.11	6.20	2.05	0.141	1.555	2.703	3.8E-07
	0	2,871	7.14	4.5	2.64	1.69	0.252	1.031	2.769	0.038
	1	2,228	14.22	6.74	7.48	2.11	0.223	1.363	3.267	7.6E-04
	2	974	25.00	9.37	15.63	3.00	0.287	1.709	5.265	1.3E-04
	3+	553	34.09	19.45	14.64	1.77	0.364	0.867	3.613	0.118
UKB EUR N=1,797	0 to 2	1,182	71.77 (89/124)	52.36 (554/1058)	19.41	2.49	0.222	1.612	3.847	4.0E-05
	0	301	47.06 (16/34)	34.08 (91/267)	12.98	1.39	0.397	0.638	3.027	0.404
	1	471	75.47 (40/53)	51.67 (216/418)	23.80	3.91	0.370	1.893	8.075	2.3E-04
	2	410	89.19 (33/37)	66.22 (247/373)	22.97	5.32	0.584	1.694	16.711	4.2E-03
	3+	615	81.48 (44/54)	81.64 (458/561)	-0.16	0.98	0.390	0.456	2.105	0.963
Meta-analysis EUR N=8,423	0 to 2	7,255	NA			2.16	0.119	1.714	2.732	8.4E-11
	0	3,172				1.60	0.213	1.053	2.424	0.028
	1	2,699				2.49	0.191	1.714	3.619	1.7E-06
	2	1,384				3.35	0.257	2.026	5.555	2.6E-06
	3+	1,168				1.34	0.266	0.798	2.264	0.267
Risk of severe disease										
AncestryDNA EUR N=6,626	0 to 2	6,073	5.23	2.55	2.67	1.99	0.211	1.320	3.000	1.1E-03
	0	2,871	1.7	1.67	0.03	1.09	0.486	0.420	2.830	0.854
	1	2,228	6.16	2.58	3.58	2.64	0.338	1.360	5.120	4.0E-03
	2	974	14.77	5.08	9.69	2.67	0.356	1.330	5.360	5.9E-03
	3+	553	18.18	11.2	6.98	1.30	0.469	0.520	3.250	0.581
UKB EUR N=1,797	0 to 2	1,182	32.26 (40/124)	19.19 (203/1058)	13.07	2.28	0.227	1.460	3.560	2.8E-04
	0	301	11.76 (4/34)	8.24 (22/267)	3.53	1.48	0.666	0.400	5.470	0.554
	1	471	39.62 (21/53)	18.42 (77/418)	21.20	4.06	0.347	2.060	8.010	5.4E-05
	2	410	40.54 (15/37)	27.88 (104/373)	12.66	1.67	0.416	0.740	3.780	2.2E-01
	3+	615	40.74 (22/54)	36.90 (207/561)	3.84	1.24	0.320	0.660	2.320	0.504
Meta-analysis EUR N=8,423	0 to 2	7,255	NA			2.12	0.154	1.566	2.868	1.2E-06
	0	3,172				1.22	0.393	0.563	2.624	0.619
	1	2,699				3.26	0.242	2.027	5.233	1.1E-06
	2	1,384				2.19	0.271	1.287	3.719	3.8E-03
	3+	1,168				1.26	0.265	0.748	2.110	0.388

* Age ≥ 65, Male, BMI > 30 (obese), plus any risk factor/comorbidity that had an age/sex adjusted nominal p-value < 0.1 in an analysis evaluating hospitalized yes/no or severe yes/no by risk factor,

** Logistic regression model adjusted for ancestry-informative PCs and REGENIE genome-wide predictor to account for family structure.