

1 **Risk factors for severe illness and death in COVID-19: a systematic review**  
2 **and meta-analysis**

3 Abraham Degarege<sup>1\*</sup>; Zaeema Naveed<sup>1</sup>; Josiane Kabayundo<sup>1</sup>; David Brett-Major<sup>1</sup>

4 <sup>1</sup> Department of Epidemiology, College of Public Health, University of Nebraska Medical  
5 Center, Omaha, Nebraska, USA.

6 **Corresponding Author**

7 Abraham Degarege, MS, PhD

8 Assistant Professor

9 Department of Epidemiology, University of Nebraska Medical Center

10 Email: [abraham.mengist@unmc.edu](mailto:abraham.mengist@unmc.edu) Phone: (1) 402-552-6682

11

12

13

14

15

16

17

18

19

## 20 **Abstract**

### 21 **Objectives**

22 This systematic review and meta-analysis synthesized the evidence on the impact of  
23 demographics and comorbidities with clinical outcomes of COVID-19, including severe  
24 illness, admission to the intensive care unit (ICU), and death.

### 25 **Methods**

26 The PRISMA guidelines were followed to conduct and report this meta-analysis. The  
27 protocol is registered in PROSPERO International prospective register of systematic  
28 reviews (ID=CRD42020184440). Two authors independently searched literature from  
29 PubMed, Embase, Cochrane library and CINHALL on May 6, 2020; removed duplicates;  
30 screened titles, abstracts and full text using criteria; and extracted data from eligible articles.  
31 A random-effects model was used to estimate the summary odds ratio (OR). Variations  
32 among studies were examined using Cochrane Q and  $I^2$ .

### 33 **Results**

34 Out of 4,275 articles obtained from the databases and screened, 71 studies that involved  
35 216,843 patients were abstracted and then, where appropriate, analyzed by meta-analysis.  
36 The COVID-19 related outcomes reported were death in 26 studies, severe illness in 41  
37 studies, and admission to ICU in 11 studies. Death was significantly correlated with  
38 hypertension (OR 2.60, 95% CI 1.95–3.25,  $I^2 = 52.6%$ ,  $n = 13$  studies), cardiovascular disease  
39 (5.16, 4.10–6.22, 0.0%, 6), diabetes (2.11, 1.35–2.87, 67.4%, 12), chronic respiratory disease  
40 (2.83, 2.14–3.51, 0.0%, 9), cerebrovascular diseases (5.14, 1.08–9.19, 0.0%, 2), male sex

41 (1.34, 1.18 – 1.50, 38.7%, 16), age older than 60 (6.09, 3.53 – 8.66, 95.5%, 6) or 65 years  
42 (3.56, 1.21 – 5.90, 18.2%, 6). Severe illness was also significantly associated with  
43 hypertension (1.70, 1.30 – 2.10, 47.8%, 21), cardiovascular diseases (2.04, 1.01–3.08, 30.6%,  
44 10), diabetes (1.65, 1.23–2.08, 24.9%, 18), male sex (1.35, 1.23 – 1.47, 0.0%, 32) and age at  
45 least 60 (4.91, 1.35 – 8.47, 0.0%, 4) or 65 (2.55, 1.94 – 3.17, 24.5%, 9) years. Among  
46 hospitalized patients, the odds of admission to ICU was greater in individuals who had  
47 cardiovascular diseases (1.36, 1.04–1.69, 0.0%, 4), diabetes (1.55, 1.20–1.90, 0.0%, 5) and  
48 chronic respiratory disease (1.52, 1.09–1.94, 0.0%, 5) than those who were not having these  
49 comorbidities.

## 50 **Conclusions**

51 Older age and chronic diseases increase the risk of developing severe illness, admission to ICU  
52 and death among COVID-19 patients. Special strategies are warranted to prevent SARS-CoV-2  
53 infection and manage COVID-19 cases in those with vulnerabilities.

54

55 Keywords: COVID-19, severe illness, death, demographics, comorbidities

56

57

58

59

60

61

62

## 63 **Introduction**

64 While the numbers of COVID-19 pandemic are a moving target, over 27 million have been  
65 infected worldwide, with more than 881 thousand deaths as of September 7, 2020 [1]. Due  
66 to potential differences in immunity and genetics, the clinical course of SARS-CoV-2  
67 infection and related death is expected to vary with human health and demography status [2-  
68 4]. However, precise factors of importance and their relative roles are not well defined.  
69 Study findings on population groups that are more susceptible to severe illness and risk  
70 factors for the clinical outcomes in COVID-19 patients remain contradictory [5-9]. While  
71 some studies reported an increased risk of developing severe illness and death in COVID-19  
72 patients with hypertension [5-7], cardiovascular diseases [5,7], diabetes [5,6], chronic  
73 respiratory diseases [5,6], cancer [6], chronic kidney diseases [6], cerebrovascular disease  
74 [6], smoking history [8], ages older than 60 years [7], and male gender [7], a limited  
75 number of studies reported lack of correlation between these comorbidities and disease  
76 progression or clinical outcomes in COVID-19 patients [9, 10].

77         Meta-analyses that examined predictors of severe illness and death in COVID-19 patients  
78 involved data generated mainly from China and were based on a small number of studies (<15)  
79 [11-13]. Although two meta-analyses summarized data based on China, Europe and the USA  
80 [14,15], one of these did not examine the effect of some important comorbidities such as cancer,  
81 chronic liver disease, and cerebrovascular disease on the risk of admission in ICU or other  
82 clinical outcomes [14], the other one searched articles available only in PubMed [15], and both at  
83 the time of this submission were not peer-reviewed and are preliminary in nature [14,15]. The

84 relevant literature important to incorporate in systematic review continues to grow, as our  
85 collective experience with COVID-19 grows. A better understanding of both striking and  
86 subtle variations in patients and their circumstances and their experience with SARS-CoV-2  
87 infection would inform the continued development of improved interventions to reduce  
88 morbidity and mortality from COVID-19. Therefore, following PRISMA guidelines, we  
89 systematically summarized and assessed literature published before May 6, 2020, and where  
90 appropriate to the data, conducted a meta-analysis of risk factors of severe illness,  
91 admission to ICU, and death among COVID-19 patients.

## 92 **Methods**

### 93 **Protocol and registration**

94 A protocol developed following the Preferred Reporting Items for Systematic Reviews and  
95 Meta-analyses (PRISMA) checklist guided the execution and reporting of this meta-analysis (S1  
96 Table) [16]. The protocol is registered in PROSPERO International prospective register of  
97 systematic reviews (ID=CRD42020184440) [17].

### 98 **Inclusion and Exclusion criteria**

99 All retrospective, cross-sectional, and prospective clinical and epidemiological studies except  
100 individual case studies (comprehensive inclusion case series allowed), which reported the  
101 prevalence or odds of death, severe illness, or admission to ICU and stratified by comorbidities  
102 or demographic status among COVID-19 patients were included in the meta-analysis.  
103 Unpublished studies and non-peer-reviewed preprints in repositories, case studies with fewer  
104 than 10 samples or reports, letters, conference abstracts, protocol, gray literature, review

105 protocols and articles, irrelevant studies (on different topics), and animal or *in vitro* studies were  
106 excluded. However, these sources were used to find additional eligible studies.

## 107 **Outcome and exposure measures**

108 The primary outcome was death. Secondary outcomes were severe illness and admission to ICU.  
109 Severe illness was defined as having one of the following: SpO<sub>2</sub> <94%; respiratory rate >30  
110 breaths per minute; lung infiltrates in >50% of lung fields by either plain or computed  
111 tomography radiography; arterial partial pressure of oxygen to fraction of inspired oxygen  
112 (PaO<sub>2</sub>/FiO<sub>2</sub>) <300 mmHg; or, organ dysfunction. Organ dysfunction include respiratory failure  
113 as evidenced by mechanical ventilation, myocardial injury as evidenced by the need for  
114 catheterization or troponin elevation, renal injury as evidenced by the need for dialysis or a 50%  
115 decrease in renal function as assessed by either creatinine rise or decline in glomerular filtration  
116 rate, hepatic failure, pulmonary embolus, or stroke/ cerebrovascular accident [18].

117 The exposure variables were demographic (age, gender, tobacco use) and comorbidities,  
118 including hypertension, diabetes, cardiovascular disease, chronic respiratory disease, chronic  
119 kidney disease, chronic liver disease, cerebrovascular disease, and cancer.

## 120 **Search methods for identification of studies**

121  
122 An article search was conducted in parallel in PubMed, Embase, Cochrane Library, and  
123 CINAHL. The search terms were (obesity OR hypertension OR Asthma or nutrition OR age OR  
124 gender OR ethnicity OR race OR income OR poverty OR pregnancy OR “Breastfeeding” OR  
125 “medical conditions” OR medications OR "chronic diseases" OR influenza or stroke OR HIV  
126 OR cancer OR diabetes OR “cardiovascular disease” OR “coronary heart disease” OR “chronic

127 respiratory disease” OR “Sequential Organ Failure Assessment” OR smoking OR “co infection”  
128 OR comorbidity OR comorbidities or risk) AND ( clinical OR severe OR complications OR  
129 mortality OR DEATH) AND (“coronavirus disease 2019” OR “COVID-19” OR “Severe acute  
130 respiratory syndrome coronavirus 2” OR SARS-CoV-2 OR “Coronavirus 2” OR “2019 novel  
131 coronavirus”). Additional details of the search are available in the supplementary files (S2  
132 Table). After transferring articles searched from the four databases to RefWorks and removing  
133 duplicates, the titles and abstracts were screened based on the inclusion and exclusion criteria.  
134 Articles approved for full-text review were further screened based on eligibility criteria. The  
135 article search and screening processes were conducted by two authors independently. The two  
136 authors resolved differences by discussion. A third author was available to mediate disagreement  
137 following an independent review.

## 138 **Data collection**

139 Data on author, study area/country, study design, sample size, crude or adjusted odds ratio (OR)  
140 of death, severe illness or admission to ICU along with 95% confidence interval (CI) among  
141 COVID-19 patients with comorbidities *vs* without comorbidities or different demographic status  
142 were abstracted from each study. In addition, when OR was not reported, raw data was used to  
143 estimate the crude ORs of death, having severe illness or admission to ICU among COVID -19  
144 patients with comorbidities *vs* without comorbidities or different demographic status per study.  
145 Two authors abstracted and entered data into the excel sheet independently and compared their  
146 results. The final data used for analysis was approved by the two authors upon discussion.

147

## 148 **Quality and risk of bias**

149 The risk of bias and quality of the studies included in this review was evaluated using the  
150 Effective Public Health Practice Project tool [19]. The Effective Public Health Practice Project  
151 tool uses six criteria: selection bias, design, confounders, blinding, data collection, and  
152 withdrawal/dropout, to examine the studies' quality. Each study's quality was determined as low,  
153 moderate, and high for each of the six criteria using two items for each criterion. The study's  
154 overall quality was determined as high when the study has no weak rating for each of the six  
155 characteristics and moderate when the study has one weak rating in one of the six characteristics.  
156 The studies were grouped as low quality when the ratings for two or more characteristics were  
157 low.

## 158 **Data analysis**

159 Percent residual variation among studies due to heterogeneity was estimated using Moran's I-  
160 squared [20]. Statistical significance of the heterogeneity was tested using the Cochran's Q chi-  
161 square test [20]. The odds ratios of the studies combined in the meta-analysis to estimate the  
162 summary OR were both adjusted and unadjusted estimates. A random-effect model using the Der  
163 Simonian and Laird method was used to estimate the summary ORs. When heterogeneity was  
164 high ( $I^2 > 60\%$ ), subgroup analysis was performed to estimate the summary ORs after grouping  
165 studies by study area/country and study design. Meta-regression was used to explore the sources  
166 of heterogeneity at study-level covariates by examining the linear relationship between ORs and  
167 study area/country, study design and sample size [21]. A funnel plot that displays the odds ratio  
168 estimate against their standard errors was used to evaluate publication bias among the studies  
169 included in the meta-analyses [22]. Statistical significance of the asymmetry of the funnel plot



170 was tested using the Egger's regression test (bias if  $p < 0.1$ ) [23]. A 95% CI and alpha of 0.05  
171 were used to assess the significance of OR.

## 172 **Results**

173 The initial search of articles from the databases using the keywords resulted in 4275 articles  
174 (PubMed=1986, Embase= 2006, CINAHL =224, and Cochrane Library = 59) out of which 1527  
175 were duplicates (Fig 1). Of the non-duplicate 2748 articles, 2444 were ineligible after screening  
176 the titles and abstracts, and 233 articles were excluded after full-text review. This resulted in 71  
177 articles appropriate for inclusion in the systematic review [5-10, 24-89], and 60 of them were  
178 also included in the meta-analysis. The majority of the studies were conducted in China  
179 (n=53), and the others from South Korea (n=2), Iran (n=1), Europe (n=6) and USA (n=9)  
180 (S1 Table 3). Study designs included retrospective (n=42), cross-sectional (n=25), and  
181 prospective (n=4). Clinical outcomes reported were death in 34 studies, severe illness in 45  
182 studies, and admission to ICU in 11 studies. Exposure variables examined in the studies  
183 included hypertension, cardiovascular disease, diabetes, chronic respiratory disease, cancer,  
184 chronic kidney disease, chronic liver disease, cerebrovascular disease, smoking, age and  
185 sex.

186 Fig 1. PRISMA flow diagram. Number of articles retrieved from databases, screened, excluded,  
187 and included

## 188 **Hypertension**

189 Out of 71 studies approved for inclusion in this review, 38 examined the correlation of  
190 hypertension with death, severe illness, and admission to ICU among COVID-19 patients. Out of  
191 the 38 studies, 36 included in the meta-analyses. Figure 2 shows summary estimates of the odds

192 ratio of death (*vs* survival: n=13 studies), severe illness (*vs* moderate or mild: n=21 studies), and  
193 admission to ICU (*vs* non-ICU: n=4 studies) among hypertensive *vs* non-hypertensive patients.  
194 While some studies reported increased odds of death (n=9 studies) and severe illness (n=10  
195 studies) among hypertensive patients, others reported a lack of correlation between hypertension  
196 and death (n=4 studies) or severe illness (n=11 studies). A summary analysis of pooled data from  
197 these studies showed moderate to high heterogeneity. Though, there were greater odds of death  
198 (OR 2.60, 95% CI 1.95–3.25,  $I^2 = 52.6%$ , number of studies (n)= 13, number of participants  
199 (N)=53,222 ) and severe illness (OR 1.70, 95% CI 1.30 –2.10,  $I^2 = 47.8%$ , n=21, N=6,172)  
200 among hypertensive as compared to non-hypertensive patients. The odds of admission to ICU  
201 were comparable between those who were hypertensive *vs* those who were not hypertensive (OR  
202 1.20, 95% CI 0.30 –2.18,  $I^2 = 79.2%$ , n=5, N=1,832).

203 Fig 2. Forest plot showing the relationship of hypertension with the odds of death, severe illness  
204 and admission in ICU among COVID-19 patients.

## 205 **Cardiovascular disease**

206 Twenty studies examined the nature of the relationship of cardiovascular disease with the odds of  
207 developing death (n=7), severe illness (n=11) and admission to ICU (n=5) among COVID-19  
208 patients. Out of the twenty studies, the majority showed higher odds of death (n=6) and severe  
209 illness (n=8) among COVID-19 patients with cardiovascular disease (Fig 3). The remaining 1 out  
210 of 7 studies showed a lack of association between cardiovascular disease and death, and 3 out of  
211 11 showed a lack of association between cardiovascular disease and the odds of developing  
212 severe illness among COVID-19 patients. A meta-analysis of the studies showed higher odds  
213 of death (OR 5.16, 95% CI 4.10–6.22,  $I^2 = 0.0%$ , n=6, N=47,134), severe illness (OR 2.04, 95%

214 CI 1.01–3.08,  $I^2 = 30.6\%$ ,  $n=11$ ,  $N=48,535$ ) and admission to ICU (OR 1.36, 95% CI 1.04–1.69,  
215  $I^2 = 0.0\%$ ,  $n=5$ ,  $N=8,346$ ) among COVID-19 patients who had cardiovascular disease as  
216 compared to those without this health problem (Fig 3).

217 Fig 3. Forest plot showing the relationship of cardiovascular disease with the odds of death,  
218 severe illness and admission in ICU among COVID-19 patients.

## 219 **Diabetes**

220 Diabetes also is posited to be linked with the risk of developing severe illness and death among  
221 COVID-19 patients. Twelve studies examined if having diabetes is correlated with the odds of  
222 death among COVID-19 patients, half of which reported increased odds of death in COVID-19  
223 patients with diabetes. Correlation of having diabetes with the odds of developing severe illness  
224 and the odds of admission to ICU was assessed in 18 (eight reported increased odds) and five  
225 (two reported increased odds) studies, respectively. A summary analysis of these studies showed  
226 greater odds of death (OR 2.11, 95% CI 1.35–2.87,  $I^2 = 67.4\%$ ,  $n=12$ ,  $N=59281$ ), severe illness  
227 (OR 1.65, 95% CI 1.23–2.08,  $I^2 = 24.9\%$ ,  $n=18$ ,  $N=5811$ ) and admission to ICU (OR 1.55, 95%  
228 CI 1.20–1.90,  $I^2 = 0.0\%$ ,  $n=5$ ,  $N=8469$ ) among patients with diabetes than those who had no  
229 diabetes (Fig 4).

230 Fig 4. Forest plot showing the relationship of diabetes with the odds of death, severe illness and  
231 admission in ICU among COVID-19 patients.

## 232 **Chronic respiratory disease**

233 Of 71 included studies, 19 compared the odds of death *vs* survival ( $n=9$ ), severe *vs* moderate or  
234 mild illness ( $n=9$ ), and admission to ICU *vs* not ( $n=4$ ) among COVID-19 patients who had

235 chronic respiratory disease *vs* those without this problem. Of the 9 studies which compared the  
236 odds of death *vs* survival, six reported significantly greater odds of death among COVID-19  
237 patients with chronic respiratory disease, but three documented lack of association between  
238 chronic respiratory disease and the odds of death. On the other hand, out of the 9 studies which  
239 compared the odds of severe *vs* mild or moderate illness among COVID-19 patients, only three  
240 reported significantly greater odds of severe illness, but five showed a lack of association  
241 between chronic respiratory disease and the odds of developing severe illness. One study  
242 reported lower odds of severe illness among COVID-19 patients with chronic respiratory disease  
243 as compared to those without chronic respiratory disease. Meta-analysis of the 19 studies showed  
244 association of chronic respiratory disease with increased odds of death (OR 2.83, 95% CI 2.14–  
245 3.51,  $I^2 = 0.0\%$ ,  $n=9$ ,  $N=59,624$ ) and admission to ICU (OR 1.52, 95% CI 1.09–1.94,  $I^2 = 0.0\%$ ,  
246  $n=5$ ,  $N=8,346$ ), but there was lack of correlation of the disease with severe illness (OR 1.39, 95%  
247 CI 0.15–2.64,  $I^2 = 27.0\%$ ,  $n=9$ ,  $N=48,381$ ) among COVID-19 patients (Fig 5).

248 Fig 5. Forest plot showing the relationship of chronic respiratory diseases with the odds of death,  
249 severe illness and admission in ICU among COVID-19 patients.

## 250 **Cancer**

251 Thirteen studies examined the nature of the relationship of cancer with the odds of death ( $n=5$ ),  
252 severe illness ( $n=6$ ) and admission to ICU ( $n=3$ ) among COVID-19 patients. Increased odds of  
253 death, severe illness and admission to ICU among COVID-19 patients who had cancer was  
254 reported in 2 (out of 5), 3 (out of 6) and 1 (out of 3) studies, respectively. The remaining studies  
255 showed a lack of association between having cancer and the odds of death ( $n=3$ ), severe illness  
256 ( $n=3$ ) and admission to ICU ( $n=2$ ) among COVID-19 patients. Meta-analysis of the 13 studies

257 showed lack of association of cancer with the odds of death (OR 1.72, 95% CI 0.39 – 3.05,  $I^2 =$   
258 0.0%, n=5, N=46,793), severe illness (OR 2.32, 95% CI 0.45 – 4.19,  $I^2 = 0.0%$ , n=6, N=3,169)  
259 and admission to ICU (OR 1.79, 95% CI -0.74 – 4.31,  $I^2 = 77.1%$ , n=3, N=1,804) among  
260 COVID-19 patients (S1 Fig).

## 261 **Chronic kidney disease**

262 Twelve studies examined the nature of the relationship of chronic kidney disease with the odds  
263 of death (n=3), severe illness (n=7) and admission to ICU (n=2) among COVID-19 patients. Of  
264 the 12 studies, two showed increased odds of death (n=1) or severe illness (n=1) among COVID-  
265 19 patients who had vs didn't have chronic kidney disease. The remaining 10 studies showed a  
266 lack of association of chronic kidney disease with the odds of death (n=3), severe illness (n=3)  
267 and admission to ICU (n=2). Meta-analysis of the 12 studies showed lack of association of  
268 chronic kidney disease with the odds of death (OR 2.32, 95% CI 0.06 – 4.58,  $I^2 = 0.0%$ , n=3,  
269 N=4951), severe illness (OR 1.42, 95% CI 0.46 – 2.38,  $I^2 = 0.0%$ , n=7, N=7788) and admission  
270 to ICU (OR 1.37, 95% CI 0.88–1.86,  $I^2 = 0.0%$ , n=2, N=6653) among COVID-19 patients (S2  
271 Fig).

## 272 **Chronic liver disease**

273 Out of the 71 studies included in this review, only seven tested the association of chronic liver  
274 disease with death or severe illness in COVID-19 patients. Of the seven studies, the only one  
275 reported a correlation of chronic liver disease with COVID-19 severity. A summary analysis of  
276 the seven studies showed lack of correlation of chronic liver disease with death (OR 1.41, 95%  
277 CI -2.20 – 5.02,  $I^2 = 0.0%$ , n=2, N=352), severe illness (OR 1.35, 95% CI 0.67–2.03,  $I^2 = 0.0%$ ,  
278 n=4, N=6855) and admission to ICU (OR 1.77 95% CI 0.65 – 4.80, n=1, N=6637) (S3 Fig).

## 279 **Cerebrovascular diseases**

280 Six studies reported findings on the odds of death (n=2), severe illness (n=2) and admission to  
281 ICU (n=2) among COVID-19 patients with cerebrovascular diseases vs those without having this  
282 comorbidity. Two studies by Guan et al. 2020 [6] and Wang et al. 2020 [72] reported increased  
283 odds of death among COVID-19 patients with cerebrovascular diseases. Another two studies  
284 also showed association of cerebrovascular diseases with increased odds of developing severe  
285 illness [37] and admission to ICU [8].

286 A meta-analysis of the two studies showed increased odds of death among COVID-19  
287 patients with cerebrovascular diseases (OR 5.14, 95% CI 1.08 – 9.19,  $I^2 = 0.0\%$ , n=2, N=1,983),  
288 but the odds of severe illness (OR 2.18, 95% CI -0.07 – 4.44,  $I^2 = 0.0\%$ , n=2, N=928) and  
289 admission to ICU (OR 4.09, 95% CI -0.20 – 8.38,  $I^2 = 0.0\%$ , n=2, N=1,606) were similar  
290 between patients with cerebrovascular diseases and those without this comorbidity (S4 Fig).

## 291 **Smoking**

292 A total of 14 studies included in the current meta-analyses that examined the impact of tobacco  
293 smoking on the clinical outcomes of COVID-19. Of these 14 studies, most showed a lack of  
294 association of smoking with death (2 out of 2), severe illness (9 out of 11), or admission to ICU  
295 (1 out of 1) among COVID-19 patients. Only two studies showed increased odds of severe  
296 illness among COVID-19 patients who were former or current smokers than non-smokers. A  
297 meta-analysis of the studies showed similar odds of death (OR 0.90, 95% CI 0.70 – 1.10,  $I^2 =$   
298  $0.0\%$ , n=2, N=9155) or severe illness (OR 1.31, 95% CI 0.96 – 1.67,  $I^2 = 0.0\%$ , n=11, N=4509)  
299 among COVID-19 patients who were former or current smokers than non-smokers (S5 Fig).

300

## 301 **Age**

302 Out of the 71 studies, 27 examined the effect of age on the odds of death, severe illness and  
303 admission to ICU. Out of 27 studies, 15 treated age as  $>65$  vs  $\leq 65$  years and 10 as  $\geq 60$  vs  $<60$   
304 years. Of the 15 studies which treated age as  $> 65$  vs  $\leq 65$  years, 13 reported increased odds of  
305 death (n=5) or severe illness (n=9) among patients of ages  $> 65$  years as compared to those of  $\leq$   
306 65 years. Similarly, nine studies that treated age as  $\geq 60$  vs  $< 60$  years reported increased odds of  
307 death (n=6) or severe illness (n=3) among patients of ages  $\geq 60$  years as compared to those  $< 60$   
308 years. Chen et al. [89] also showed an increased hazard ratio of severe illness among patients of  
309 Age  $\geq 65$  years as compared to younger individuals (Hazard ratio 3.43; 95% CI, 1.24-9.5). Dong  
310 et al. [88] also reported an increased prevalence of severe COVID-19 illness in children than  
311 those of adult patients. However, a study showed similar odds of severe illness among  
312 individuals of ages  $\geq 60$  vs  $<60$  years [80]. Two studies also reported similar odds of admission  
313 to ICU among individuals of ages  $> 65$  years vs those of  $\leq 65$  years [10,25]. A meta-analysis of  
314 these studies showed a greater odds of death (OR 3.56, 95% CI 1.21 – 5.90,  $I^2 = 18.2\%$ , n=6,  
315 N=13,964) and severe illness (OR 2.55, 95% CI 1.94 – 3.17,  $I^2 = 24.5\%$ , n=9, N=3374) among  
316 patients of ages  $> 65$  years than those of  $\leq 65$  years. The summary odds ratio estimates of death  
317 (OR 6.09, 95% CI 3.53 – 8.66,  $I^2 = 95.5\%$ , n=6, N=100,733) and severe illness (OR 4.91, 95%  
318 CI 1.35 – 8.47,  $I^2 = 0.0\%$ , n=4, N=333) among older-aged COVID-19 patients than younger ones  
319 were even much greater when age was treated as  $\geq 60$  vs  $< 60$  (Fig 6).

320 Fig 6. Forest plot showing the relationship of age with the odds of death, severe illness and  
321 admission in ICU among COVID-19 patients.

322

## 323 Gender

324 Fifty-two studies examined the effect of gender on the odds of death (n=16), severe illness  
325 (n=32) and admission to ICU among COVID-19 patients (n=6). Out of 16 studies which  
326 compared the odds of death between males and females, 10 reported increased odds in males and  
327 six documented similar odds between males vs female. A meta-analysis of the 16 studies showed  
328 increased odds of death among males than females (OR 1.34, 95% CI 1.18 – 1.50,  $I^2 = 38.7%$ ,  
329 n=16, N=68,609). Similarly, of the 32 studies which compared the odds of severe illness  
330 between males vs females, 11 reported increased odds and 21 studies document similar odds  
331 between males vs female. A summary analysis of the 32 studies showed increased odds of severe  
332 illness among males than females (OR 1.35, 95% CI 1.23 – 1.47,  $I^2 = 0.0%$ , n=32, N=13,426);  
333 however, this could not be further assessed by tandem risk factors (e.g., underlying  
334 cardiovascular disease) in the available data.

335 There were six studies that examined the relationship of gender with the odds of  
336 admission to ICU. Out of these six studies, two showed increased odds of admission to ICU in  
337 males than females, but four studies showed a lack of association between gender and the odds  
338 of admission to ICU. A summary of the 6 studies showed a lack of correlation between gender  
339 and admission to ICU in COVID-19 patients (OR 1.52, 95% CI 0.69 – 2.36,  $I^2 = 2.9%$ , n=6,  
340 N=666) (Fig 7).

341 Fig 7. Forest plot showing the relationship of gender with the odds of death, severe illness and  
342 admission in ICU among COVID-19 patients.

343

344



## 345 **Heterogeneity assessment**

346 There was no heterogeneity ( $I^2 = 0.0\%$ ) observed among the studies included in the meta-  
347 analyses that estimated the summary odds ratio of death, severe illness or admission to ICU  
348 among COVID-19 patients with cerebrovascular diseases, chronic liver disease, chronic kidney  
349 disease, cancer or smoker vs those without these comorbidities. There was also no or low  
350 heterogeneity among the studies included in the meta-analyses that examined correlation of  
351 clinical outcomes in COVID-19 patients with cardiovascular disease ( $I^2 = 0.0\%$  for death and  
352 admission to ICU,  $I^2 = 30.6\%$  for severe illness), diabetes ( $I^2 = 0.0\%$  for admission to ICU,  
353  $I^2 = 24.9\%$  for severe illness), chronic respiratory disease ( $I^2 = 0.0\%$  for death and admission to  
354 ICU,  $I^2 = 27.0\%$  for severe illness), age in years  $> 65$  vs  $\leq 65$  ( $I^2 = 18.2\%$  for death,  $I^2 = 24.5\%$  for  
355 severe illness), and gender ( $I^2 = 0.0\%$  for severe illness,  $I^2 = 2.9\%$  for admission to ICU,  
356  $I^2 = 38.7\%$  for death). The heterogeneity level in meta-analyses performed to examine  
357 associations of hypertension with the odds of death ( $I^2 = 52.6\%$ ) and severe illness ( $I^2 = 47.8\%$ )  
358 among COVID-19 patients was moderate.

359 However, heterogeneity was high among the studies combined in the meta-analyses to  
360 examine the association of death with diabetes ( $I^2 = 67.4\%$ ) and age,  $\geq 60$  vs  $< 60$  years ( $I^2 =$   
361  $95.5\%$ ) in COVID-19 patients. Studies that were included in the meta-analyses to assess the  
362 nature of the relationship of admission to ICU with hypertension ( $I^2 = 79.2\%$ ) also had high  
363 heterogeneity. Subgroup analyses by study design dropped heterogeneity: diabetes ( $I^2 = 0.0\%$  in  
364 retrospective), and age ( $I^2 = 0.0\%$  in retrospective;  $I^2 = 0.0\%$  in cross-sectional). Due to the few  
365 numbers of studies that reported results on the effect of hypertension on the risk of admission to  
366 ICU, we didn't perform subgroup analyses by study region/country or study design. Removal of

367 a study by Guan et al. 2020a [6], however, significantly minimized the heterogeneity of the  
368 studies that examined the effect of hypertension on the risk of admission to ICU ( $I^2 = 1.0\%$ ).

369 On the other hand, the meta regression showed lack of effect of study area or country  
370 (meta regression coefficient ( $\beta$ )= -0.50,  $P= 0.073$ ), study design ( $\beta = -0.23$ ,  $P= 0.400$ ) and  
371 sample size ( $1.25e-06$ ,  $P= 0.912$ ) on the log ORs of death among COVID-19 patients with  
372 diabetes vs those without this problem. Similarly, study area or country ( $\beta= -0.30$ ,  $P= 0.380$ ),  
373 study design ( $\beta = \beta = -0.04$ ,  $P= 0.863$ ) and sample size ( $\beta = 8.74e-06$ ,  $P= 0.631$ ) didn't  
374 significantly predict the log ORs of admission to ICU among COVID-19 patients of age  $\geq 60$   
375 years vs  $<60$  years in the meta regression model.

## 376 **Publication bias assessment**

377 Odds ratio distributions against their standard error estimates and Egger tests for asymmetry did  
378 not indicate significant publication bias: hypertension (bias 6.22,  $P=0.11$ ), diabetes (bias 1.43,  
379  $P=0.634$ ), cardiovascular disease (bias 1.64,  $P=0.71$ ), chronic respiratory diseases (bias 6.47,  
380  $P=0.13$ ), chronic kidney disease (bias 88.99,  $P=0.11$ ), and cancer (Egger's regression test (bias) -  
381 0.26,  $P=0.953$ ) (Fig 8 and S6 Fig). Funnel plots of odds ratios of the likelihood of developing  
382 severe vs moderate or mild illness among COVID-19 patients and their Egger tests also were not  
383 significant: hypertension (bias 5.05,  $P=0.21$ ); diabetes (bias 3.29,  $P=0.353$ ), chronic respiratory  
384 diseases (bias -8.36,  $P=0.12$ ); chronic kidney disease (bias -0.57,  $P=0.807$ ); and, cancer (bias  
385 3.34,  $P=0.598$ ) (Fig 8 and S6 Fig). Studies comparing the odds ratio of admission to ICU vs not  
386 admission to ICU among COVID-19 patients with cancer (bias -6.27,  $P=0.51$ ), hypertension  
387 (bias -5.36,  $P=0.12$ ), diabetes (bias 0.53,  $P=0.763$ ), cardiovascular (bias 1.37,  $P=0.40$ ), chronic  
388 respiratory diseases (bias 1.98,  $P=0.67$ ) were also spread evenly on both sides of the average OR

389 estimates, creating an approximately symmetrical funnel-shaped distribution (Fig 8 and S6 Fig).  
390 The odds ratio estimates of the studies which examined the relationship of chronic liver disease  
391 (bias 0.47,  $P=0.752$ ), cerebrovascular diseases (bias -5.83,  $P=0.395$ ) and smoking behavior (bias  
392 0.98,  $P=0.217$ ) with severe illness or death in COVID-19 patients also had approximately  
393 symmetrical funnel-shaped distribution and the Egger's test for the asymmetry of the plots were  
394 not significant (S6 Fig). However, there was publication bias among the studies comparing the  
395 odds of i) death vs survival in patients with age > 65 vs  $\leq 65$  years (bias 11.29,  $P=0.062$ ) and  
396 males vs females (bias 2.90,  $P=0.046$ ); ii) severe vs mild or moderate illness in patients with age  
397 > 65 vs  $\leq 65$  years (bias 14.63,  $P=0.032$ ), males vs females (bias 2.18,  $P=0.039$ ) and those with  
398 cardiovascular disease vs without having this problem (bias 5.62,  $P=0.034$ ), the odds ratio  
399 estimates scattered asymmetrically in the funnel plot (Fig 8 and S6 Fig).

400 Fig 8. Funnel plots showing the odds ratio of death, severe illness and admission in ICU against the  
401 standard errors based on comorbidity and age

## 402 **Risk of bias and quality of the studies**

403 The study's risk of bias and quality included in this study is summarized in the supplementary  
404 table (S4 table). Out of the 71 studies, 54 were moderate quality, and 18 were good quality in  
405 recruiting the study participants. The majority of the studies also used good ( $n=54$ ) or moderate  
406 quality ( $n=17$ ) reliable and valid tools to determine COVID-19 severity status and related deaths  
407 among the study participants. In many studies ( $n=44$ ), the researchers or data collectors were not  
408 aware of the group (exposed vs. unexposed) to which the study participants belong in the data  
409 collection process and/or the participants were blinded about the research question. About 2/3 of  
410 the included studies were of moderate quality in terms of the study design (retrospective case-  
411 control or cohort) and controlling confounders that may affect the relationship between

412 comorbidities and COVID-19 related outcomes or death. On the other hand, several studies rated  
413 as low quality based on study design (n=15), data collection (n=8), confounders (n=26), blinding  
414 (n=28) and dropouts and withdrawals (n=29). None of the studies were of low quality in terms of  
415 blinding of the outcome assessor and the study participants. Total rating using the six criteria  
416 showed that 14 studies were of strong quality, 23 studies were of moderate quality, and 34  
417 studies were rated as low quality. Studies were included in this review, regardless of their  
418 qualities.

## 419 **Discussion**

420 The current systematic review and meta-analysis confirmed the correlation of demographic  
421 factors and comorbidities with severe illness and death among COVID-19 patients, as reported in  
422 other reviews [11-13]. COVID-19 patients who were males, with age >60 or 65 years and those  
423 who had hypertension, diabetes, cardiovascular disease, chronic respiratory disease and  
424 cerebrovascular diseases, were found more susceptible to death. The risk of developing severe  
425 illness also increased among males COVID-19 patients of ages older than 60 or 65 years, and  
426 those who had hypertension, diabetes, and cardiovascular diseases. However, comorbidities,  
427 including cancer, chronic kidney and chronic liver diseases, were not associated with severe  
428 illness and mortality in COVID-19 patients.

429       Chronic diseases, including hypertension, diabetes, chronic respiratory disease,  
430 cardiovascular disease put the body in stress for a longer period of time. This stress can weaken  
431 the immune system. For example, diabetes can cause damage to  $\beta$ -cell through the release of  
432 inflammatory cytokines such as IL-1 $\beta$  and TNF $\alpha$  that [90]. Metabolic disorders may also impair  
433 macrophage and lymphocyte function leading to low immune function [39]. Chronic disease can

434 also affect the function of different organs of the body such as the lung, heart, vascular tube.  
435 These organs dysfunction and low immunity due to the chronic diseases will complicate and  
436 increase the risk of severe illness and death during SARS-CoV-2 infection. It is also possible that  
437 angiotensin converting enzyme inhibitors or angiotensin receptor blockers used to treat diabetes,  
438 hypertension, or heart disease may upregulate Angiotensin converting enzyme 2, a receptor to  
439 SARS-CoV-2 in the host cell [91-93]. This may facilitate the viral multiplication within the host  
440 cell, though this is controversial [94].

441 Similarly, immunity can decrease with age, which will make older patients vulnerable to  
442 develop severe illness and death during SARS-CoV-2 infection. While functional  
443 immunosuppression of senescence may play a role in older adults experiencing worse disease,  
444 older adults also are more likely to have an underlying chronic disease. Males may also be more  
445 likely to involve in risky behaviors, including smoking, alcohol drinking and drug use, which can  
446 down-regulate the immune response against the SARS-CoV-2 infection.

447 Lack of association of some chronic diseases (e.g., kidney disease) and smoking with  
448 COVID-19 outcomes could be due to limitations in the original studies. The role of chronic  
449 kidney disease was assessed among comparatively few participants, which could explain its  
450 discordance with the results among cardiovascular equivalents. Potential ascertainment bias in  
451 the original studies could also partly explain the lack of association of chronic respiratory disease  
452 with severe illness though the disease showed to have a role in death and admission to ICU.  
453 Similarly, lack of correlation of smoking with clinical outcomes in the COVID-19 patients could  
454 be due the watering effect of the chronic disease outcomes. If most of the patients with  
455 cardiopulmonary diseases were smokers, exacerbated by ascertainment bias (they did not ask  
456 enough, or misinterpreted prior smoking and current smoking from never smoking), could miss

457 the distinction of tobacco use. Unfortunately, most studies didn't control chronic disease as a  
458 potential confounder when examining the role of smoking on COVID-19 related outcomes.

459         These findings have a number of public health and research implications that will help in  
460 the management of high-risk COVID-19 patients to mitigate the progression of the disease and  
461 associated death. Based on our findings, special strategies are warranted to prevent SARS-CoV-2  
462 infection and manage COVID-19 cases with underlying comorbidities, particularly older age  
463 males' patients. For example, creating awareness and provision of robust personal protection  
464 measures would be needed to prevent older aged individuals who have comorbidities from  
465 SARS-CoV-2 infection. Second, more intensive surveillance and early hospital referral would be  
466 important for older age males COVID-19 patients with comorbidities. When these high-risk  
467 older age COVID-19 patients, particularly those with comorbidities, are admitted to a hospital,  
468 special attention and treatment care could be considered to prevent further progression of the  
469 disease and death. Third, future vaccination intervention against SARS-CoV-2 infection should  
470 be formulated to better protect people with comorbidities. In addition, when the SARS-CoV-2  
471 vaccination is available, people with hypertension, cardiovascular disease, diabetes, respiratory  
472 system disease and cerebrovascular disease should be a priority in the vaccination  
473 recommendations. The current findings also suggest prospective cohort studies with adequate  
474 power to verify whether and how comorbidities and demographics can affect the risk of  
475 acquisition of the SARS-CoV-2 and clinical outcomes of the disease.

476         This meta-analysis has a number of strengths. Unlike previous meta-analyses on the  
477 related topic [11-13], it i) involves a comprehensive analysis of a large number of studies based  
478 in China, South Korea, Iran, Europe and North America; ii) summarized the literature on the  
479 effect of comorbidities, including cancer, chronic liver and cerebrovascular disease with severe

480 illness and death; and iii) compared the risk of admission to ICU vs not among hospitalized  
481 COVID -19 patients stratified based on comorbidities and demographic status. In addition, we  
482 found little publication bias regarding the examination of the association of comorbidities with  
483 severe illness and death in COVID-19 patients. Most of our meta-analyses had no or low  
484 heterogeneity, including the association of cardiovascular disease, chronic respiratory disease,  
485 chronic liver, cerebrovascular disease, chronic kidney disease, age, gender and severe illness and  
486 death. Although there was a high level of heterogeneity in studies that examined the correlation  
487 of diabetes with severe illness, subgroup analysis by the study design significantly decreased the  
488 heterogeneity. Variation in the study participant inclusion criteria and the methods used for  
489 examining comorbidities among the studies could have also contributed to the observed high  
490 heterogeneity.

491         However, the calculated summary OR in the current meta-analyses could have been  
492 affected due to limitations in the original studies. Most studies reported frequencies or crude  
493 estimates which were not adjusted for potential confounder that could affect the relationship  
494 between comorbidities and the risk of severe illness or death in COVID-19 patients. In addition,  
495 the sample size and/or the number of severe cases or deaths in patients with varied comorbidity  
496 or demographic status were small in some studies, increasing the confidence interval estimates  
497 for the OR and decreasing the power to reject false associations. These limitations in the original  
498 studies could have under or overestimated the summary OR estimates of the meta-analysis that  
499 examined the relationship of demographic and comorbidities with this review's outcomes.  
500 Moreover, due to the cross-sectional and retrospective nature of the original studies, we cannot  
501 make firm conclusions that the observed higher odds of severe illness and death among COVID-  
502 19 patients were due to comorbidities, their demographic status, or other undetermined factors,

503 though this was mitigated with the incorporation of random effects. In addition, as the majority  
504 of the studies included in the meta analysis were retrospective, we didn't assess the risk of  
505 selection bias. Furthermore, in order to decrease the risk of misclassification bias, the exposures  
506 cardiovascular diseases, diabetes and cerebrovascular diseases could be merged while examining  
507 their effect on the risk of death and severe illness. However, the studies assessed and reported the  
508 results for these exposures differently, separately.

## 509 **Conclusions**

510 In conclusion, older age and the presence of comorbidities or chronic diseases increase the risk  
511 of developing severe illness, admission to ICU and death among COVID-19 patients. Special  
512 strategies are warranted to prevent SARS-CoV-2 infection and manage COVID-19 cases with  
513 underlying comorbidities, particularly older age male patients, though the impact in women may  
514 be insufficiently observed. Prospective, longitudinal studies that control confounders are needed  
515 to assess strategies for mitigating severe illness, admission to ICU, and death in COVID-19  
516 patients.

517 **Funding.** This work has not received support from an external funding source. The work is that  
518 of the authors, and does not necessarily reflect the views of any agency of the State of Nebraska.

519 **Competing interests:** The authors declare that they have no competing interests

520

521

522



## 523 **References**

- 524 1. WHO Coronavirus Disease (COVID-19) Dashboard. Available in  
525 <https://covid19.who.int/> on September 2, 2020.
- 526 2. Zhang X, Tan Y, Ling Y, et al. Viral and host factors related to the clinical outcome of  
527 COVID-19. *Nature*. 2020; 583: 437- 440.
- 528 3. Richardson S, Hirsch JS, Narasimhan M, et al. Presenting Characteristics, Comorbidities,  
529 and Outcomes Among 5700 Patients Hospitalized With COVID-19 in the New York City  
530 Area. *JAMA*. 2020;323(20):2052-2059.
- 531 4. Liua Y, Gua Z, Xi S, et al. What are the underlying transmission patterns of COVID-19  
532 outbreak? An age-specific social contact characterization. *EClinical Medicine*.  
533 2020;22:100354.
- 534 5. Deng G, Yin M, Chen X, Zeng F. Clinical determinants for fatality of 44,672 patients  
535 with COVID-19. *Crit Care*. 2020;24(1):179.
- 536 6. Guan WJ, Liang WH, Zhao Y et al. Comorbidity and its impact on 1590 patients with  
537 Covid-19 in China: A Nationwide Analysis. *Eur Respir J* . 2020; 55: 2000547.
- 538 7. Li X, Xu S, Yu M et al. Risk factors for severity and mortality in adult COVID-19  
539 inpatients in Wuhan. *J Allergy Clin Immunol*. 2020; 146: 110-118.
- 540 8. Guan WJ, Ni ZY, Hu Y et al. Clinical Characteristics of Coronavirus Disease 2019 in  
541 China. *N Engl J Med*. 2020;382(18):1708-1720.
- 542 9. Hu H, Yao N, Qiu Y. Comparing rapid scoring systems in mortality prediction of critical  
543 ill patients with novel coronavirus disease. *Acad Emerg Med*. 2020; 27: 461-468.
- 544 10. Du RH, Liu LM, Yin W et al. Hospitalization and Critical Care of 109 Decedents with  
545 COVID-19 Pneumonia in Wuhan, China. *Ann Am Thorac Soc*. 2020;17: 839–846.

- 546 11. Li X, Guan B, Su T, et al. Impact of cardiovascular disease and cardiac injury on in-  
547 hospital mortality in patients with COVID-19: a systematic review and meta-analysis.  
548 Heart. 2020; 106(15): 1142-1147.
- 549 12. Yang J, Zheng Y, Gou X, et al. Prevalence of comorbidities in the novel Wuhan  
550 coronavirus (COVID-19) infection: a systematic review and meta-analysis. Int J Infect  
551 Dis. 2020; 94:91-95.
- 552 13. Zheng Z, Peng F, Xu B, et al. Risk factors of critical and mortal COVID-19 cases: A  
553 systematic literature review and meta-analysis. J Infect. 2020; 11:15.
- 554 14. Dorjee K, Hyunju Kim. Epidemiological Risk Factors Associated with Death and Severe  
555 Disease in Patients Suffering From COVID-19: A Comprehensive Systematic Review  
556 and Meta-analysis. doi: <https://doi.org/10.1101/2020.06.19.20135483>.
- 557 15. Bellou V, Tzoulaki I, Evangelou E, Belbasis L. Risk factors for adverse clinical  
558 outcomes in patients with COVID-19: A systematic review and meta-analysis.  
559 <https://doi.org/10.1101/2020.05.13.20100495>
- 560 16. Moher D, Liberati A, Tetzlaff J, Altman DG, The PRISMA Group. Preferred Reporting  
561 Items for Systematic Reviews and Meta-Analyses: The PRISMA Statement. PLoS Med  
562 2009; 6(6): e1000097.
- 563 17. Degarege A, Naveed Z, Kabayundo J. Risk factors for severe illness and death in  
564 COVID-19: a systematic review and meta-analysis. PROSPERO 2020 CRD42020184440  
565 Available in  
566 [https://www.crd.york.ac.uk/prospero/display\\_record.php?ID=CRD42020184440](https://www.crd.york.ac.uk/prospero/display_record.php?ID=CRD42020184440).  
567 Accessed on July 6, 2020.

- 568 18. NIH. COVID-19 treatment guidelines. Management of Persons with COVID-19.  
569 Available at: [https://www.covid19treatmentguidelines.nih.gov/overview/management-of-](https://www.covid19treatmentguidelines.nih.gov/overview/management-of-covid-19/)  
570 [covid-19/](https://www.covid19treatmentguidelines.nih.gov/overview/management-of-covid-19/). Accessed on August 5, 2020.
- 571 19. Effective Public Health Practice Project. Quality assessment tool for quantitative studies.  
572 Hamilton, ON: Effective public health practice project. Available from:  
573 <https://merst.ca/ephpp>. Accessed on 11/20/2020.
- 574 20. Higgins JPT, Thompson SG, Deeks JJ, Altman DG. Measuring inconsistency in meta-  
575 analyses. *BMJ* 2003; 327.
- 576 21. DerSimonian R, Laird N. Meta-analysis in clinical trials. *Control Clin Trials*.  
577 1986;7:177–88.
- 578 22. Baker WL, White CM, Cappelleri JC, Kluger J, Coleman CI; Health Outcomes, Policy,  
579 and Economics (HOPE) Collaborative Group. Understanding heterogeneity in meta-  
580 analysis: the role of meta-regression. *Int J Clin Pract*. 2009;63(10):1426-1434.
- 581 23. Hayashino Y, Noguchi Y, Fukui T. Systematic evaluation and comparison of statistical  
582 tests for publication bias. *J Epidemiol*. 2005;15(6):235–43.
- 583 24. Characteristics of Health Care Personnel with COVID-19 - United States, February 12-  
584 April 9, 2020. *MMWR Morb Mortal Wkly Rep* . 2020;69(15):477-481.
- 585 25. Preliminary Estimates of the Prevalence of Selected Underlying Health Conditions  
586 Among Patients with Coronavirus Disease 2019 - United States, February 12-March 28,  
587 2020. *MMWR Morb Mortal Wkly Rep* . 2020;69(13):382-386.
- 588 26. Aggarwal S, Garcia-Telles N, Aggarwal G, Lavie C, Lippi G, Henry BM. Clinical  
589 features, laboratory characteristics, and outcomes of patients hospitalized with

- 590 coronavirus disease 2019 (COVID-19): Early report from the United States. Diagnosis  
591 (Berl). 2020;7(2):91-96.
- 592 27. Al-Rousan N, Al-Najjar H. Data Analysis of Coronavirus CoVID-19 Epidemic in South  
593 Korea Based on Recovered and Death Cases. J Med Virol. 2020; doi: 10.1002/jmv.25850
- 594 28. Bezzio C, Saibeni S, Variola A et al. Outcomes of COVID-19 in 79 patients with IBD in  
595 Italy: an IG-IBD study. Gut. 2020;69(7):1213-1217.
- 596 29. Bi Q, Wu Y, Mei S et al. Epidemiology and transmission of COVID-19 in 391 cases and  
597 1286 of their close contacts in Shenzhen, China: a retrospective cohort study. Lancet  
598 Infect Dis. 2020;20(8):911-919.
- 599 30. Bi X, Su Z, Yan H et al. Prediction of severe illness due to COVID-19 based on an  
600 analysis of initial Fibrinogen to Albumin Ratio and Platelet count. Platelets.  
601 2020;31(5):674-679
- 602 31. CDC COVID-19 Response Team. Preliminary Estimates of the Prevalence of Selected  
603 Underlying Health Conditions Among Patients with Coronavirus Disease 2019 - United  
604 States, February 12-March 28, 2020. MMWR Morb Mortal Wkly Rep . 2020;69(13):382-  
605 386.
- 606 32. Chen Q, Zheng Z, Zhang C et al. Clinical characteristics of 145 patients with corona virus  
607 disease 2019 (COVID-19) in Taizhou, Zhejiang, China. Infection .48(4):543-551
- 608 33. Colaneri M, Sacchi P, Zuccaro V et al. Clinical characteristics of coronavirus disease  
609 (COVID-19) early findings from a teaching hospital in Pavia, North Italy, 21 to February  
610 28 2020. Euro Surveill . 2020;25(16):10.2807/1560-7917.ES.2020.25.16.2000460.

- 611 34. Deng Q, Hu B, Zhang Y et al. Suspected myocardial injury in patients with COVID-19:  
612 Evidence from front-line clinical observation in Wuhan, China. *Int J Cardiol* . 2020;  
613 311:116-121.
- 614 35. Du RH, Liang LR, Yang CQ et al. Predictors of Mortality for Patients with COVID-19  
615 Pneumonia Caused by SARS-CoV-2: A Prospective Cohort Study. *Eur Respir J* . 2020;  
616 55(5):2000524.
- 617 36. Dudley JP, Lee NT. Disparities in Age-Specific Morbidity and Mortality from SARS-  
618 CoV-2 in China and the Republic of Korea. *Clin Infect Dis* . 2020; 71(15):863-865.
- 619 37. Feng Y, Ling Y, Bai T et al. COVID-19 with Different Severity: A Multi-center Study of  
620 Clinical Features. *Am J Respir Crit Care Med* . 2020; 201(11):1380-1388.
- 621 38. Gong J, Ou J, Qiu X et al. A Tool to Early Predict Severe Corona Virus Disease 2019  
622 (COVID-19) : A Multicenter Study using the Risk Nomogram in Wuhan and Guangdong,  
623 China. *Clin Infect Dis* . 2020; 71(15):833-840.
- 624 39. Grasselli G, Zangrillo A, Zanella A et al. Baseline Characteristics and Outcomes of 1591  
625 Patients Infected With SARS-CoV-2 Admitted to ICUs of the Lombardy Region, Italy.  
626 *JAMA* . 2020; 323(16):1574-1581.
- 627 40. Guo W, Li M, Dong Y et al. Diabetes is a risk factor for the progression and prognosis of  
628 COVID-19. *Diabetes Metab Res Rev*. 2020; e3319. doi: 10.1002/dmrr.3319
- 629 41. Han H, Xie L, Liu R et al. Analysis of heart injury laboratory parameters in 273 COVID-  
630 19 patients in one hospital in Wuhan, China. *J Med Virol* . 2020; 92(7):819-823.
- 631 42. Hu L, Chen S, Fu Y et al. Risk Factors Associated with Clinical Outcomes in 323  
632 COVID-19 Hospitalized Patients in Wuhan, China. *Clin Infect Dis* . 2020; ciaa539. doi:  
633 10.1093/cid/ciaa539.

- 634 43. Ji D, Zhang D, Xu J et al. Prediction for Progression Risk in Patients with COVID-19  
635 Pneumonia: the CALL Score. *Clin Infect Dis* . 2020; 71(6):1393-1399.
- 636 44. Kalligeros M, Shehadeh F, Mylona EK et al. Association of Obesity with Disease  
637 Severity among Patients with COVID-19. *Obesity (Silver Spring)* . 2020; 28(7):1200-  
638 1204.
- 639 45. Lei F, Liu YM, Zhou F et al. Longitudinal association between markers of liver injury  
640 and mortality in COVID-19 in China. *Hepatology*. 2020; 72(2):389-398.
- 641 46. Leung C. Risk factors for predicting mortality in elderly patients with COVID-19: a  
642 review of clinical data in China. *Mech Ageing Dev*. 2020:111255.
- 643 47. Li K, Wu J, Wu F et al. The Clinical and Chest CT Features Associated With Severe and  
644 Critical COVID-19 Pneumonia. *Invest Radiol*. 2020;55(6):327-331.
- 645 48. Lian J, Jin X, Hao S et al. Analysis of Epidemiological and Clinical features in older  
646 patients with Corona Virus Disease 2019 (COVID-19) out of Wuhan. *Clin Infect Dis* .  
647 2020; doi: 10.1093/cid/ciaa242.
- 648 49. Lin L, Jiang X, Zhang Z et al. Gastrointestinal symptoms of 95 cases with SARS-CoV-2  
649 infection. *Gut*. 2020; 69(6):997-1001.
- 650 50. Liu Y, Du X, Chen J et al. Neutrophil-to-lymphocyte ratio as an independent risk factor  
651 for mortality in hospitalized patients with COVID-19. *J Infect* . 2020; 81(1):e6-e12.
- 652 51. Mehra MR, Desai SS, Kuy S, Henry TD, Patel AN. Cardiovascular Disease, Drug  
653 Therapy, and Mortality in Covid-19. *N Engl J Med*. 2020; 382(25):e102.
- 654 52. Mehta V, Goel S, Kabarriti R et al. Case Fatality Rate of Cancer Patients with COVID-19  
655 in a New York Hospital System. *Cancer Discov*. 2020; 10(7):935-941.

- 656 53. Middeldorp S, Coppens M, van Haaps TF et al. Incidence of venous thromboembolism in  
657 hospitalized patients with COVID-19. *J Thromb Haemost.* 2020; 18(8):1995-2002.
- 658 54. Nikpouraghdam M, Jalali Farahani A, Alishiri G et al. Epidemiological characteristics of  
659 coronavirus disease 2019 (COVID-19) patients in IRAN: A single center study. *J Clin*  
660 *Virol* . 2020;127:104378.
- 661 55. Pei G, Zhang Z, Peng J et al. Renal Involvement and Early Prognosis in Patients with  
662 COVID-19 Pneumonia. *J Am Soc Nephrol.* 2020; 31(6):1157-1165.
- 663 56. Pereira MR, Mohan S, Cohen DJ et al. COVID-19 in Solid Organ Transplant Recipients:  
664 Initial Report from the US Epicenter. *Am J Transplant* . 2020; 20(7):1800-1808.
- 665 57. Qin C, Zhou L, Hu Z et al. Dysregulation of immune response in patients with COVID-  
666 19 in Wuhan, China. *Clin Infect Dis* . 2020; 71(15):762-768.
- 667 58. Qu R, Ling Y, Zhang YH et al. Platelet-to-lymphocyte ratio is associated with prognosis  
668 in patients with coronavirus disease-19. *J Med Virol* . 2020; 10.1002/jmv.25767. doi:  
669 10.1002/jmv.25767.
- 670 59. Richardson S, Hirsch JS, Narasimhan M et al. Presenting Characteristics, Comorbidities,  
671 and Outcomes Among 5700 Patients Hospitalized With COVID-19 in the New York City  
672 Area. *JAMA* . 2020; 323(20):2052-2059.
- 673 60. Shi Y, Yu X, Zhao H, Wang H, Zhao R, Sheng J. Host susceptibility to severe COVID-  
674 19 and establishment of a host risk score: findings of 487 cases outside Wuhan. *Crit Care.*  
675 2020;24(1):108-020-2833-7.
- 676 61. Simonnet A, Chetboun M, Poissy J et al. High prevalence of obesity in severe acute  
677 respiratory syndrome coronavirus-2 (SARS-CoV-2) requiring invasive mechanical  
678 ventilation. *Obesity (Silver Spring)* . 2020; 28(10):1994.

- 679 62. Sun L, Shen L, Fan J et al. Clinical Features of Patients with Coronavirus Disease 2019  
680 (COVID-19) from a Designated Hospital in Beijing, China. *J Med Virol*. 2020;  
681 10.1002/jmv.25966. doi: 10.1002/jmv.25966.
- 682 63. Sun S, Cai X, Wang H et al. Abnormalities of peripheral blood system in patients with  
683 COVID-19 in Wenzhou, China. *Clin Chim Acta* . 2020;507:174-180.
- 684 64. Tang N, Bai H, Chen X, Gong J, Li D, Sun Z. Anticoagulant treatment is associated with  
685 decreased mortality in severe coronavirus disease 2019 patients with coagulopathy. *J*  
686 *Thromb Haemost* . 2020;18(5):1094-1099.
- 687 65. Tedeschi S, Giannella M, Bartoletti M et al. Clinical impact of renin-angiotensin system  
688 inhibitors on in-hospital mortality of patients with hypertension hospitalized for COVID-  
689 19. *Clin Infect Dis*. 2020; 71(15):899-901.
- 690 66. Tian S, Hu N, Lou J et al. Characteristics of COVID-19 infection in Beijing. *J Infect*.  
691 2020;80(4):401-406.
- 692 67. To KK, Tsang OT, Leung WS et al. Temporal profiles of viral load in posterior  
693 oropharyngeal saliva samples and serum antibody responses during infection by SARS-  
694 CoV-2: an observational cohort study. *Lancet Infect Dis*. 2020;20(5):565-574.
- 695 68. Verity R, Okell LC, Dorigatti I et al. Estimates of the severity of coronavirus disease  
696 2019: a model-based analysis. *Lancet Infect Dis* . 2020; 20(6):669-677.
- 697 69. Wan S, Xiang Y, Fang W et al. Clinical features and treatment of COVID-19 patients in  
698 northeast Chongqing. *J Med Virol* . 2020; 92(7):797-806.
- 699 70. Wang D, Yin Y, Hu C et al. Clinical course and outcome of 107 patients infected with the  
700 novel coronavirus, SARS-CoV-2, discharged from two hospitals in Wuhan, China. *Crit*  
701 *Care* . 2020;24(1):188-020-02895-6.



- 702 71. Wang J, Xu Z, Wang J et al. CT characteristics of patients infected with 2019 novel  
703 coronavirus: association with clinical type. *Clin Radiol* . 2020; 75(6):408-414.
- 704 72. Wang L, He W, Yu X et al. Coronavirus disease 2019 in elderly patients: Characteristics  
705 and prognostic factors based on 4-week follow-up. *J Infect* . 2020; 80(6):639-645.
- 706 73. Wei X, Su J, Yang K et al. Elevations of serum cancer biomarkers correlate with severity  
707 of COVID-19. *J Med Virol* . 2020.
- 708 74. Wu J, Li W, Shi X et al. Early antiviral treatment contributes to alleviate the severity and  
709 improve the prognosis of patients with novel coronavirus disease (COVID-19). *J Intern*  
710 *Med* . 2020; 10.1002/jmv.25957. doi: 10.1002/jmv.25957.
- 711 75. Yan Y, Yang Y, Wang F et al. Clinical characteristics and outcomes of patients with  
712 severe covid-19 with diabetes. *BMJ Open Diabetes Res Care* .  
713 2020;8(1):10.1136/bmjdr-2020-001343.
- 714 76. Yang G, Tan Z, Zhou L et al. Effects Of ARBs And ACEIs On Virus Infection,  
715 Inflammatory Status And Clinical Outcomes In COVID-19 Patients With Hypertension:  
716 A Single Center Retrospective Study. *Hypertension* . 2020; 76(1):51-58.
- 717 77. Yang R, Gui X, Zhang Y, Xiong Y. The role of essential organ-based comorbidities in  
718 the prognosis of COVID-19 infection patients. *Expert Rev Respir Med* . 2020; 14(8):835-  
719 838.
- 720 78. Yang X, Yang Q, Wang Y et al. Thrombocytopenia and its association with mortality in  
721 patients with COVID-19. *J Thromb Haemost*. 2020; 18(6):1469-1472.
- 722 79. Yao Q, Wang P, Wang X et al. Retrospective study of risk factors for severe SARS-Cov-  
723 2 infections in hospitalized adult patients. *Pol Arch Intern Med*. 2020; 130(5):390-399.

- 724 80. Yu X, Sun X, Cui P et al. Epidemiological and Clinical Characteristics of 333 Confirmed  
725 Cases with Coronavirus Disease 2019 in Shanghai, China. *Transbound Emerg Dis.* 2020;  
726 67(4):1697-1707.
- 727 81. Zhang G, Zhang J, Wang B, Zhu X, Wang Q, Qiu S. Analysis of clinical characteristics  
728 and laboratory findings of 95 cases of 2019 novel coronavirus pneumonia in Wuhan,  
729 China: a retrospective analysis. *Respir Res.* 2020;21(1):74-020-01338-8.
- 730 82. Zhang J, Liu P, Wang M et al. The clinical data from 19 critically ill patients with  
731 coronavirus disease 2019: a single-centered, retrospective, observational study. *Z*  
732 *Gesundh Wiss.* 2020; 21;1-4. doi: 10.1007/s10389-020-01291-2.
- 733 83. Zhang R, Ouyang H, Fu L et al. CT features of SARS-CoV-2 pneumonia according to  
734 clinical presentation: a retrospective analysis of 120 consecutive patients from Wuhan  
735 city. *Eur Radiol.* 2020; 30(8):4417-4426.
- 736 84. Zhang Y, Zheng L, Liu L, Zhao M, Xiao J, Zhao Q. Liver impairment in COVID-19  
737 patients: A retrospective analysis of 115 cases from a single centre in Wuhan city, China.  
738 *Liver Int.* 2020; 40(9):2095-2103.
- 739 85. Zheng KI, Gao F, Wang XB et al. Obesity as a risk factor for greater severity of COVID-  
740 19 in patients with metabolic associated fatty liver disease. *Metabolism.* 2020:154244.
- 741 86. Zou Y, Guo H, Zhang Y et al. Analysis of coagulation parameters in patients with  
742 COVID-19 in Shanghai, China. *Biosci Trends.* 2020;14(4):285-289.
- 743 87. Chen R, Liang W, Jiang M. Risk factors of fatal outcome in hospitalized subjects with  
744 coronavirus disease 2019 from a nationwide analysis in china. *Chest* 2020; 158(1): 97–  
745 105.

- 746 88. Yuanyuan Dong Y, Mo X, Hu Y, et al. Epidemiology of COVID-19 among children in  
747 china. *Pediatrics*, 2020; 145:e20200702
- 748 89. CDC. COVID-19 Response Team. Severe Outcomes Among Patients with Coronavirus  
749 Disease 2019 (COVID-19) —United States, February 12–March 16, 2020 (MMWR)  
750 2020; 69: 12
- 751 90. Odegaard JI, Chawla A. Connecting type 1 and type 2 diabetes through innate immunity.  
752 *Cold Spring Harbor Perspect Med* 2012;2:a007724.
- 753 91. Akhmerov A, Marban E. COVID-19 and the Heart. *Circ Res*. 2020;126(10):1443-1455.
- 754 92. Clerkin KJ, Fried JA, Raikhelkar J, et al. COVID-19 and Cardiovascular Disease.  
755 *Circulation*. 2020;141(20):1648-1655.
- 756 93. South AM, Diz DI, Chappell MC. COVID-19, ACE2, and the cardiovascular  
757 consequences. *Am J Physiol Heart Circ Physiol*. 2020;318(5):H1084-H1090.
- 758 94. Dhawan R, Gundry RL, Brett-Major DM, et al. COVID-19 and cardiovascular disease:  
759 What we know, what we think we know, and what we need to know. *J Mol Cell Cardiol*.  
760 2020;144:12-14.

761

762

763

764

765

766

767 **Supporting information**

768 S1 Table. PRISMA 2009 Checklist.

769 S2 Table. Searching details Embase.

770 S3 Table. Characteristics of the studies.

771 S4 Table. Risk of bias and quality of the studies included in this review.

772 S1 Fig. Forest plot showing the relationship of cancer with the odds of death, severe illness and  
773 admission in ICU among COVID-19 patients.

774 S2 Fig. Forest plot showing the relationship of chronic Kidney disease with the odds of death,  
775 severe illness and admission in ICU among COVID-19 patients.

776 S3 Fig. Forest plot showing the relationship of chronic liver disease with the odds of death,  
777 severe illness and admission in ICU among COVID-19 patients.

778 S4 Fig. Forest plot showing the relationship of Cerebrovascular disease with the odds of death, severe  
779 illness and admission in ICU among COVID-19 patients.

780 S5 Fig. Forest plot showing the relationship of smoking with the odds of death, severe illness and  
781 admission in ICU among COVID-19 patients.

782 S6 Fig. Funnel plots showing the odds ratio of death, severe illness and admission in ICU against  
783 the standard errors based on comorbidity and age status.

784

785

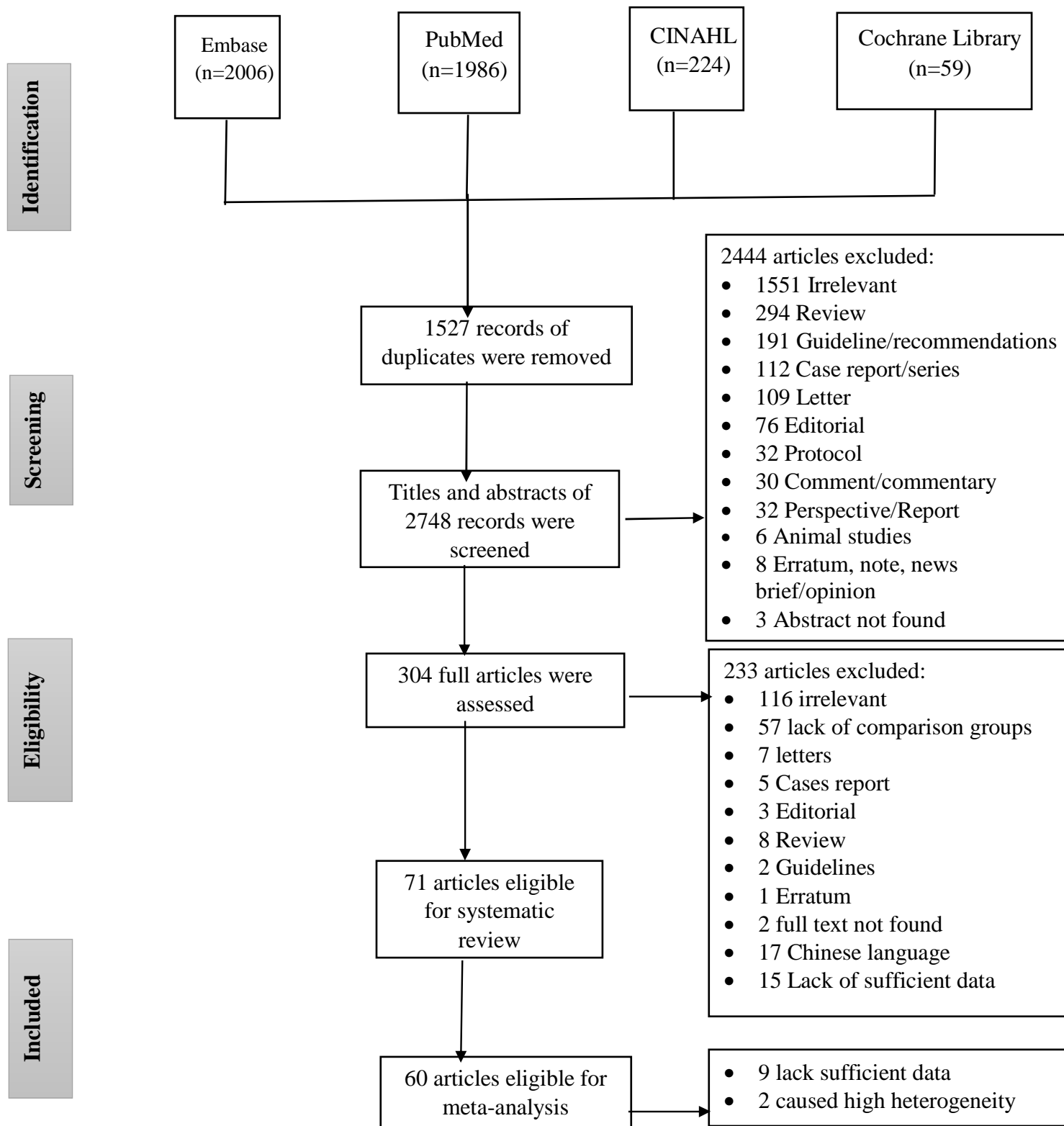


Fig 1.

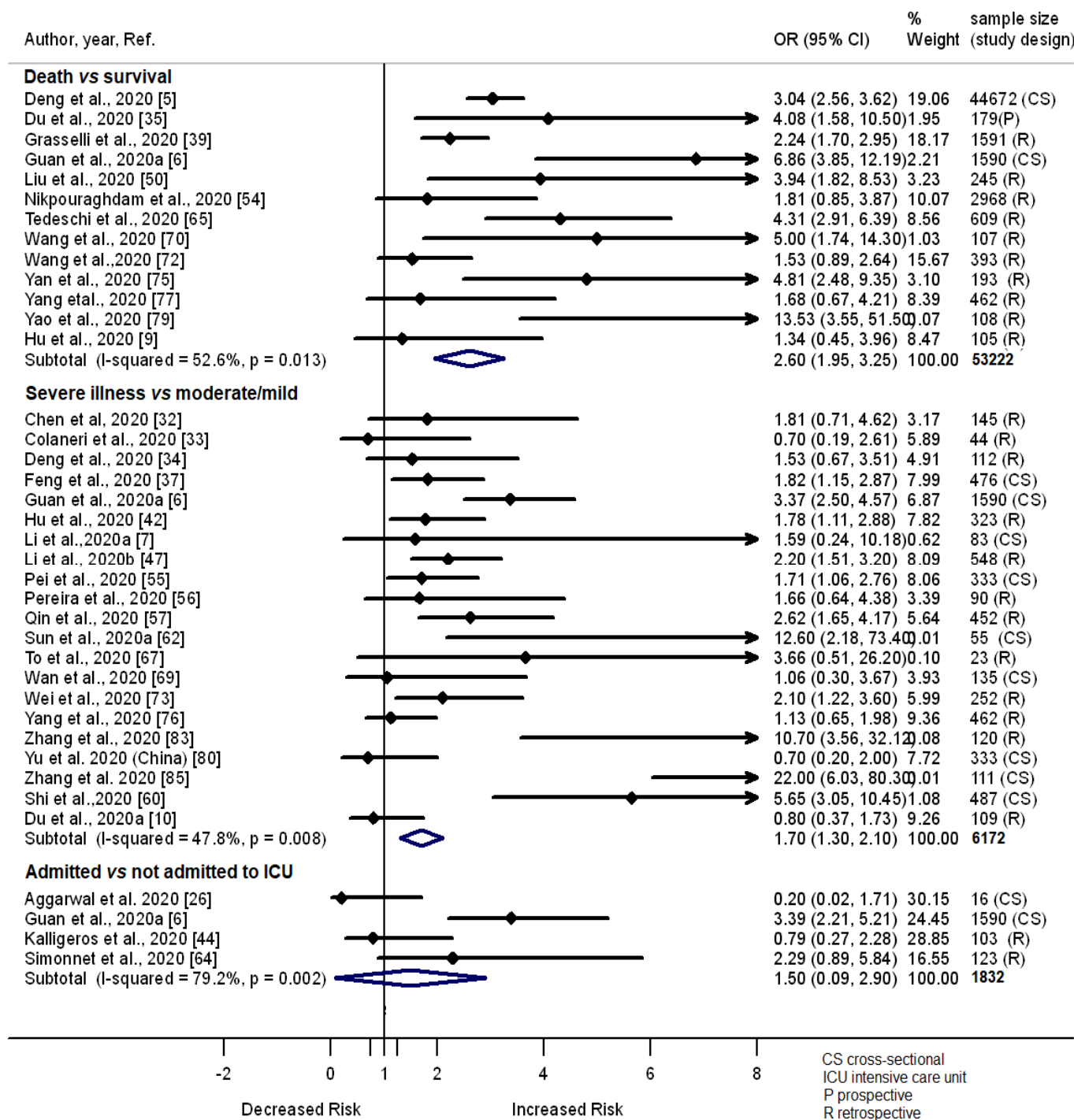


Fig 2.

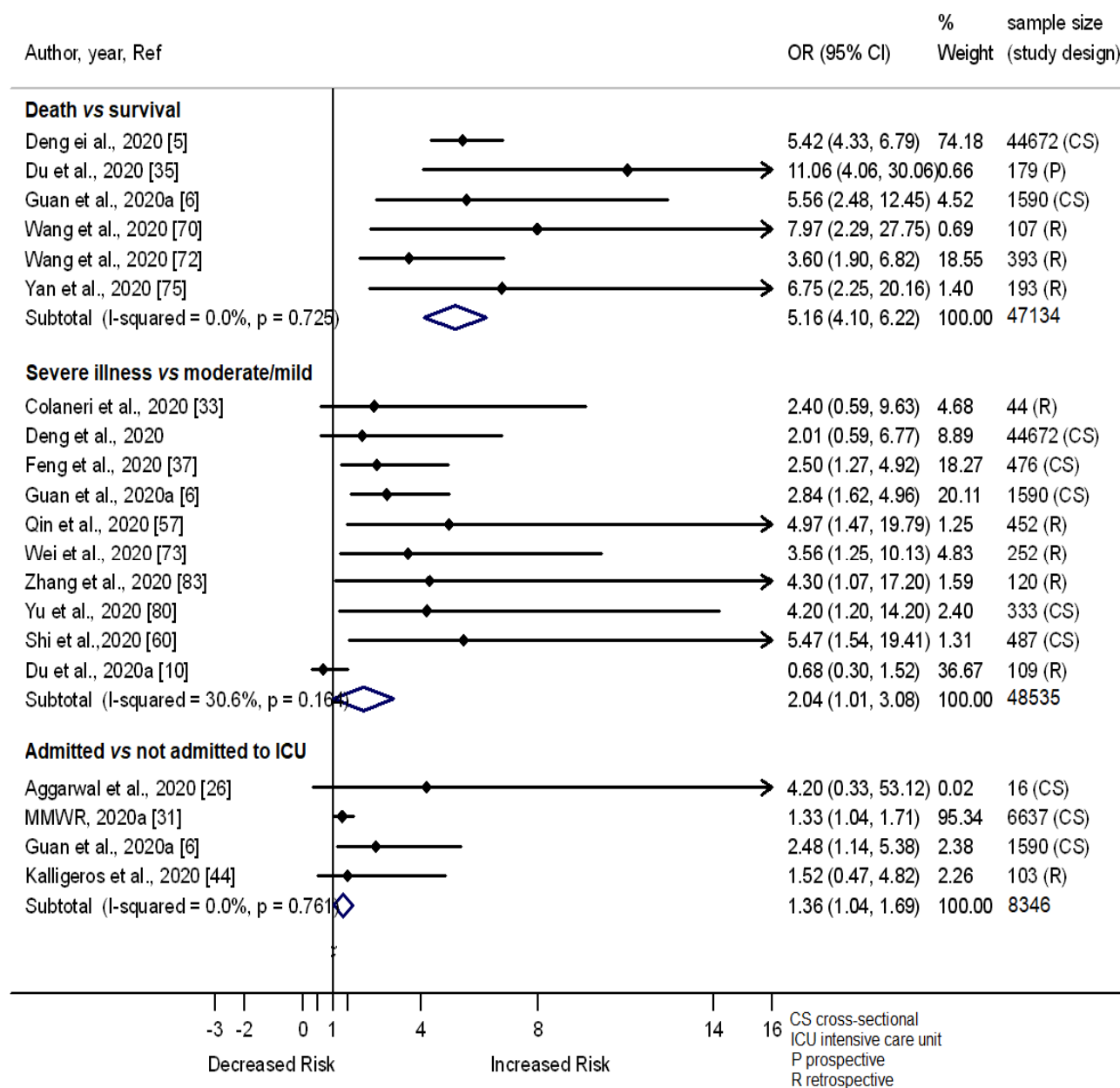


Fig 3.

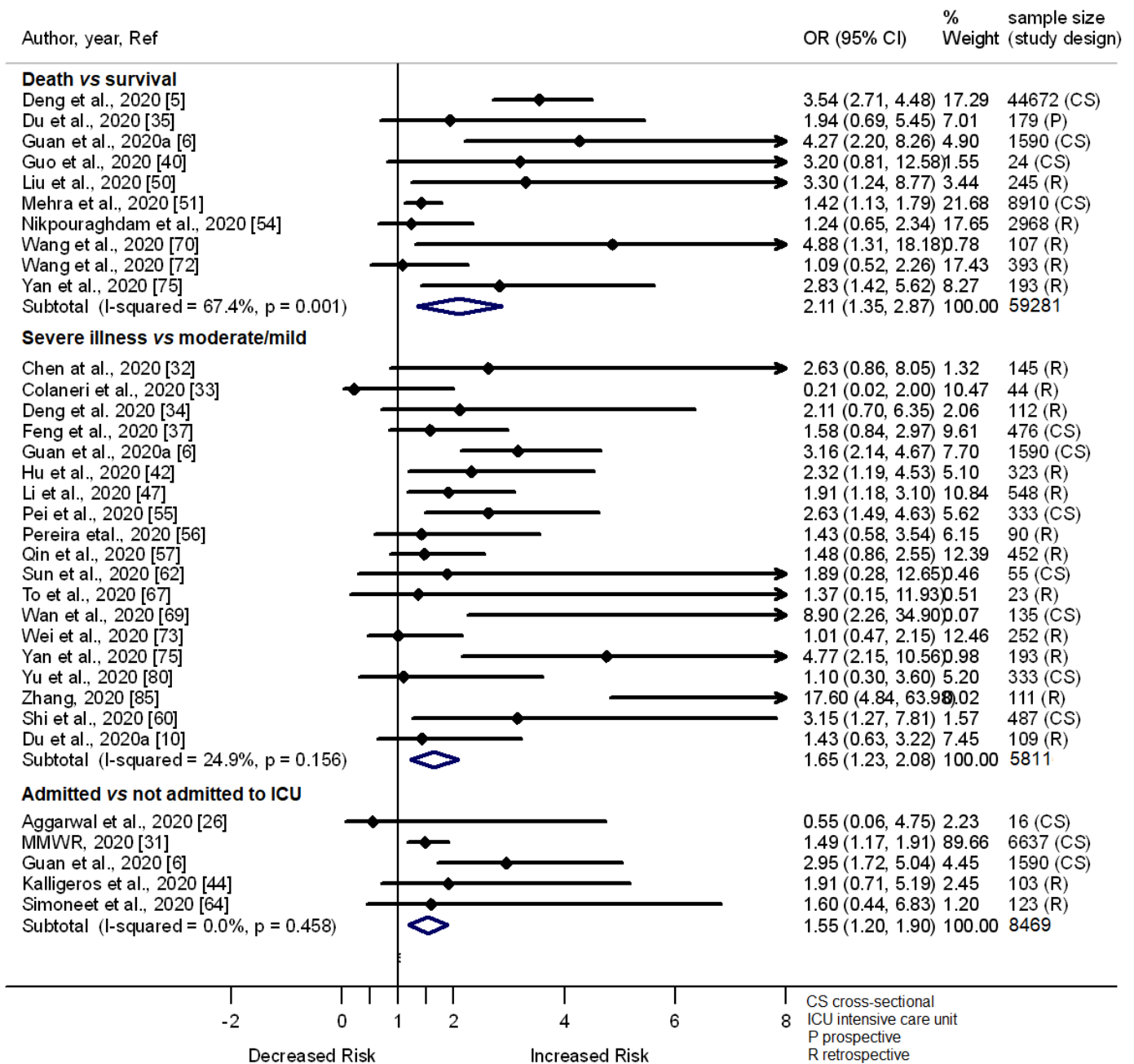


Fig 4.



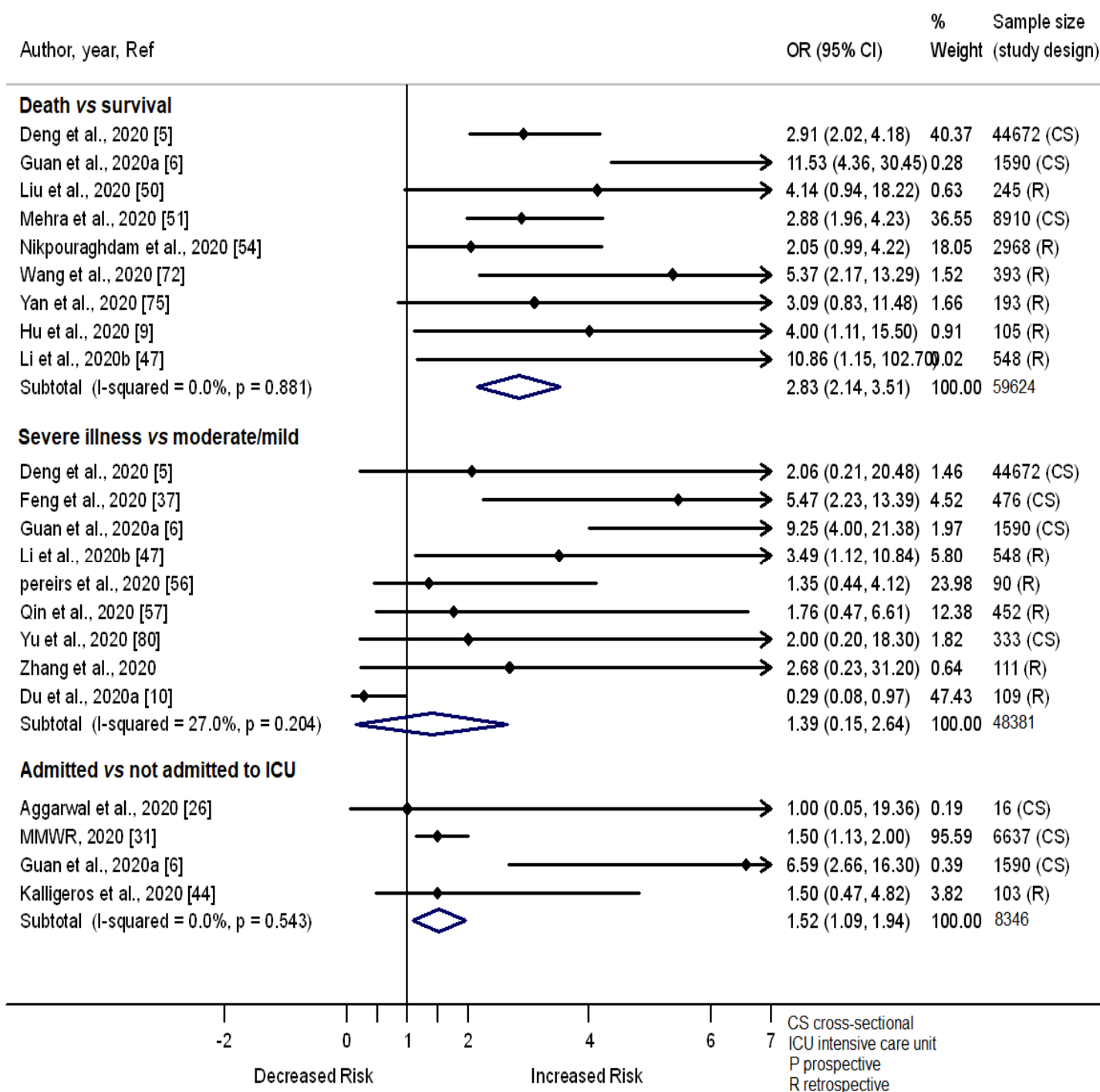


Fig 5.

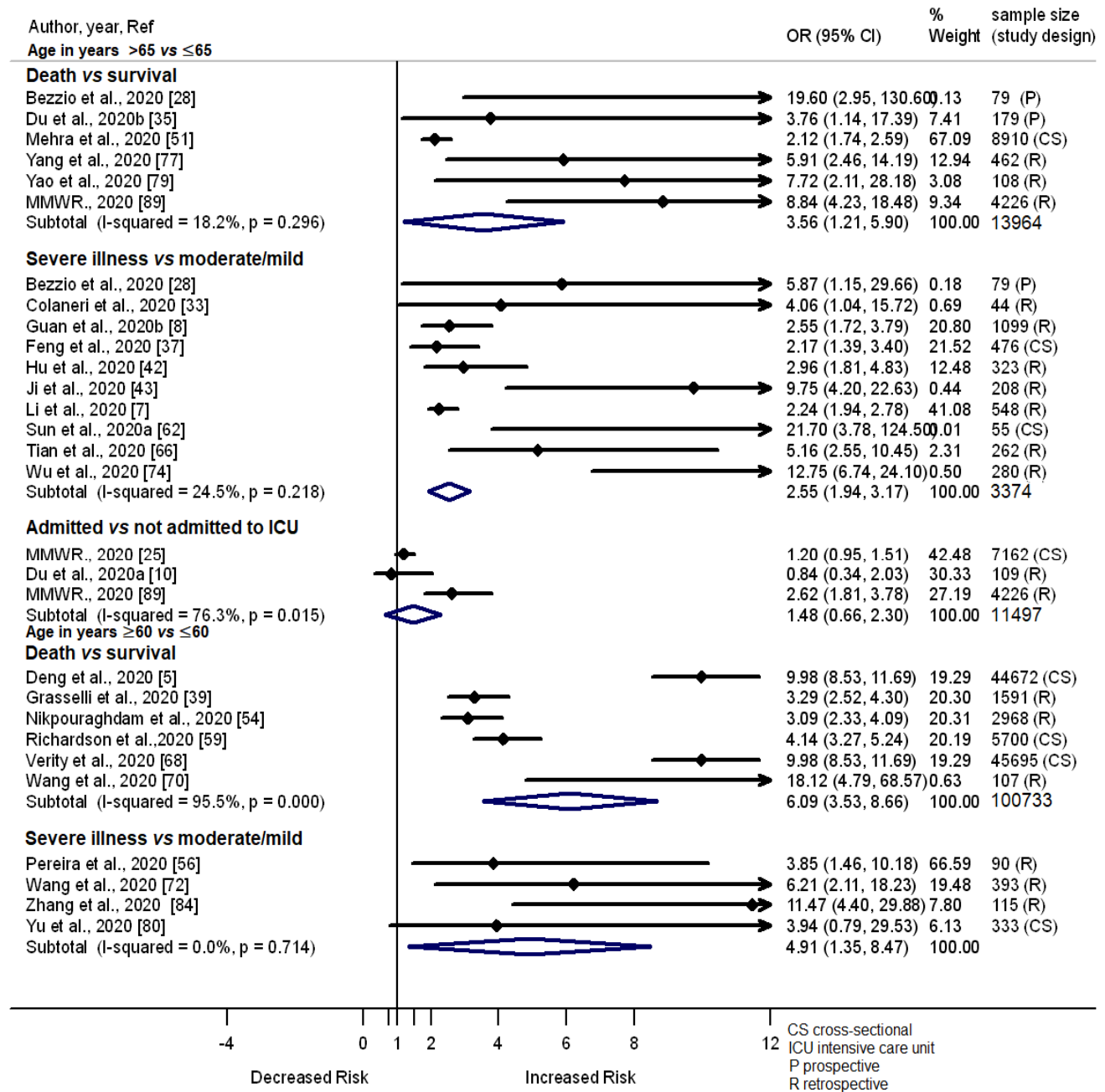


Fig 6.

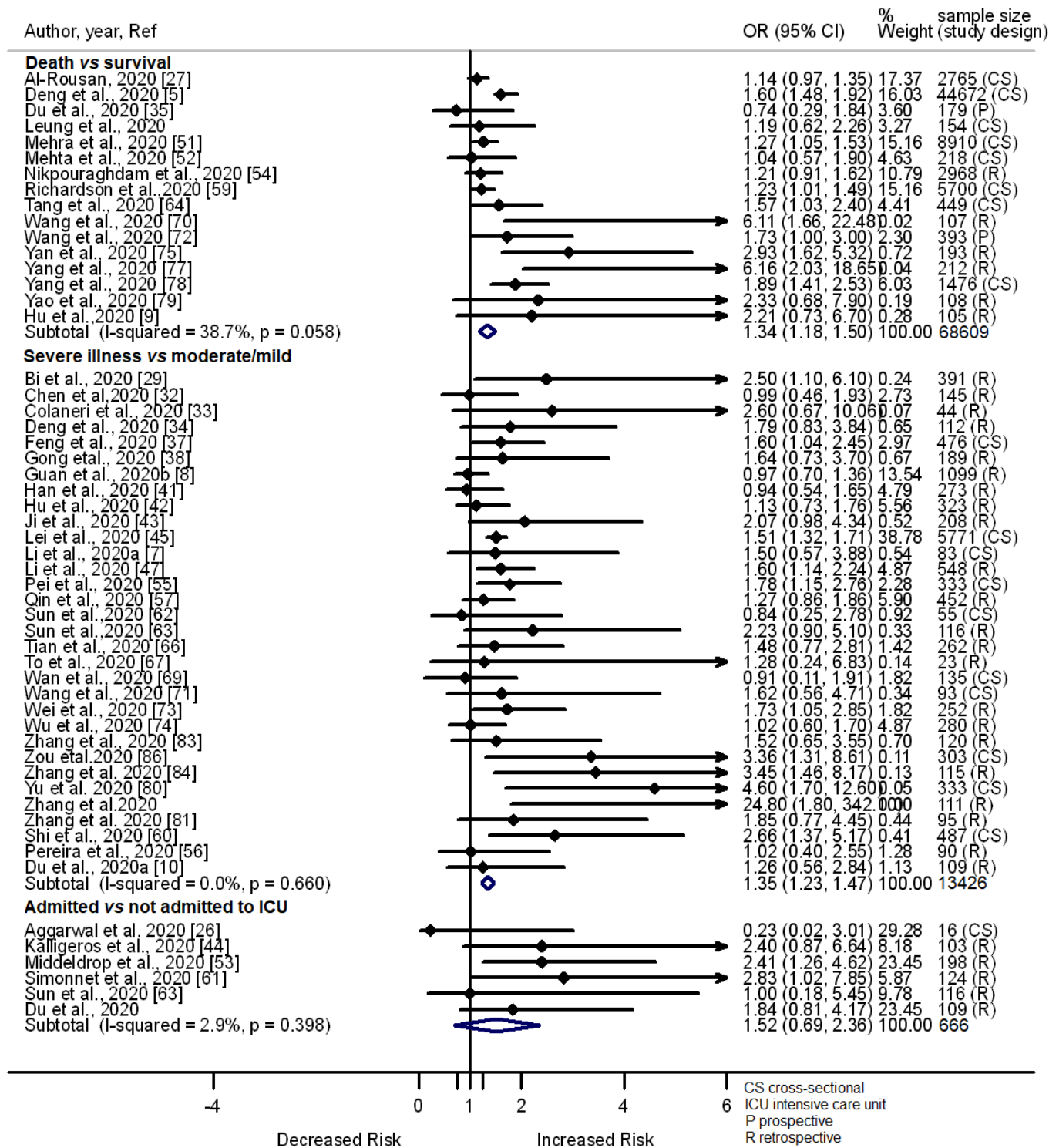


Fig 7.

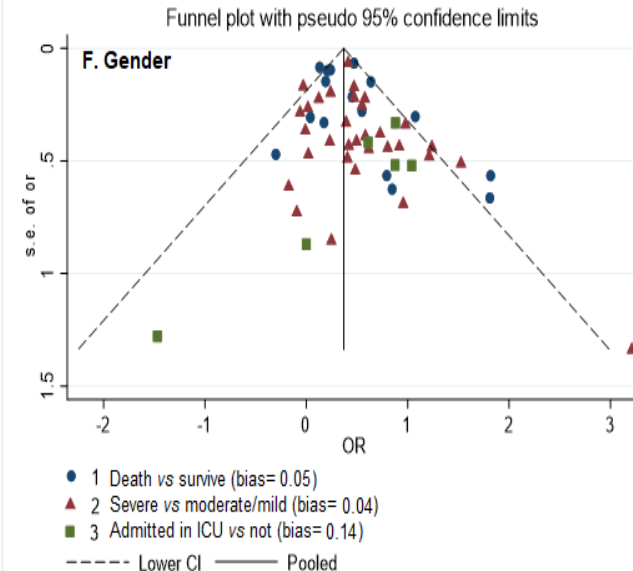
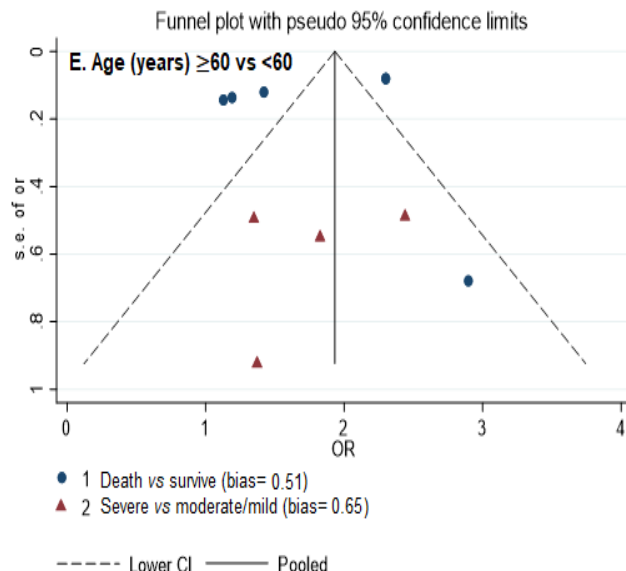
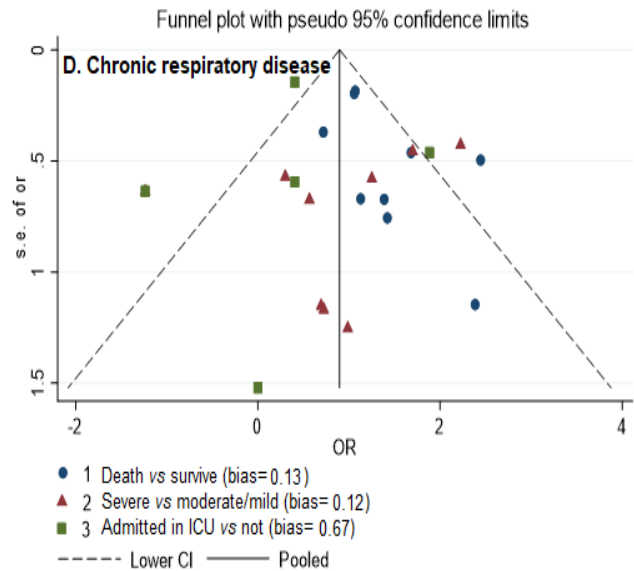
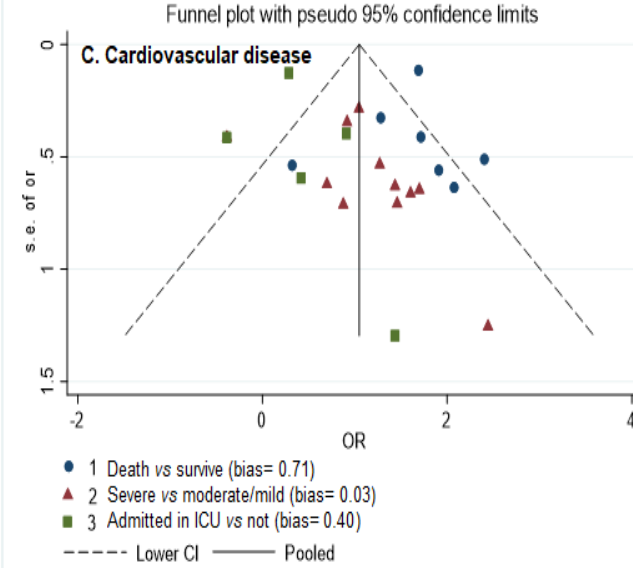
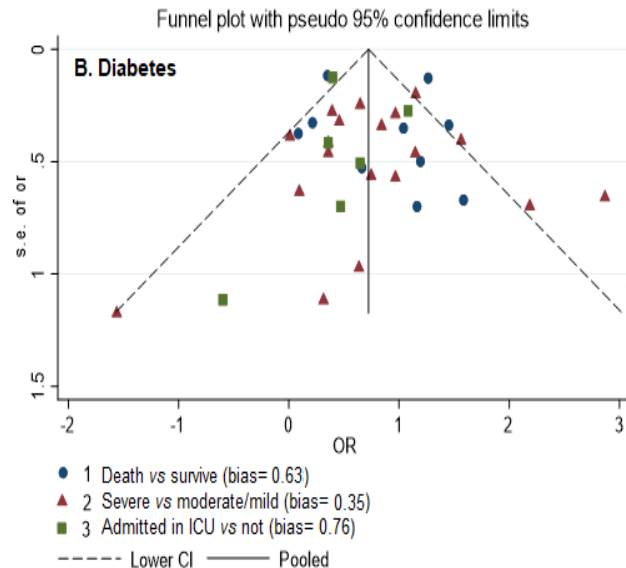
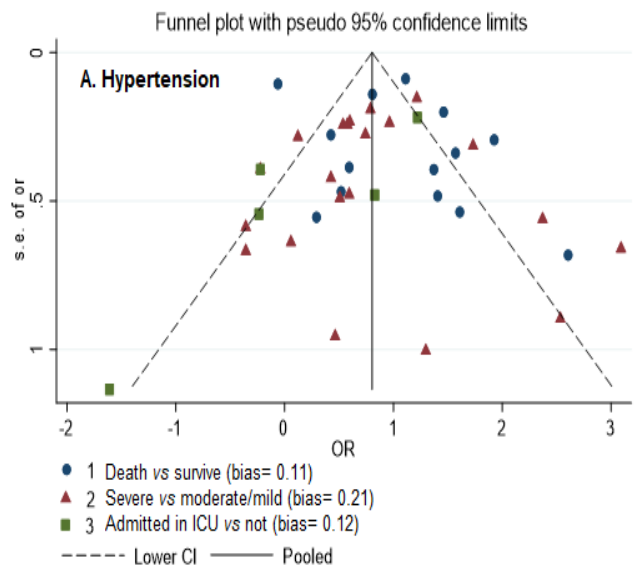


Fig 8.