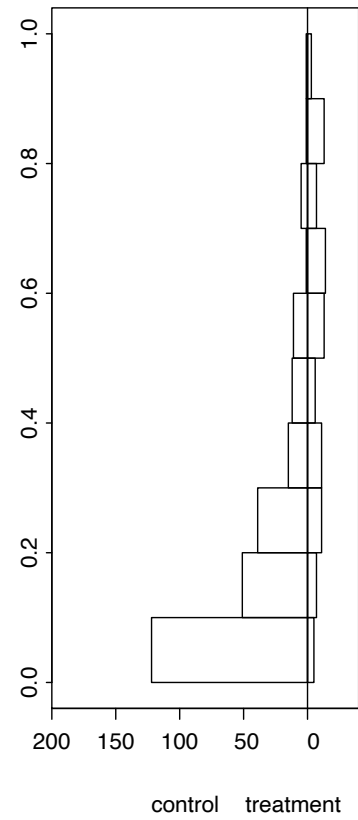
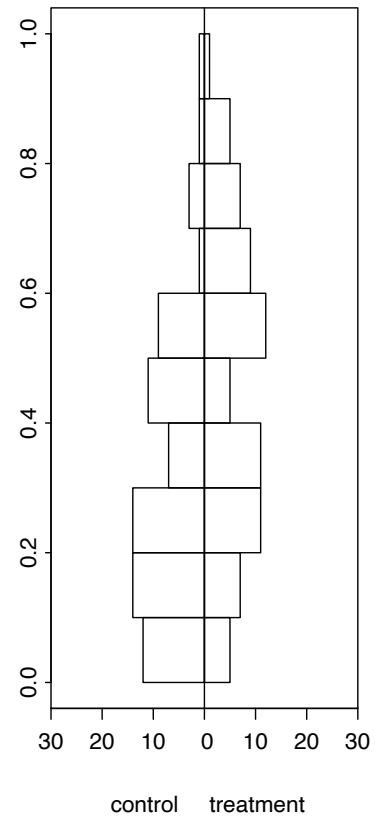


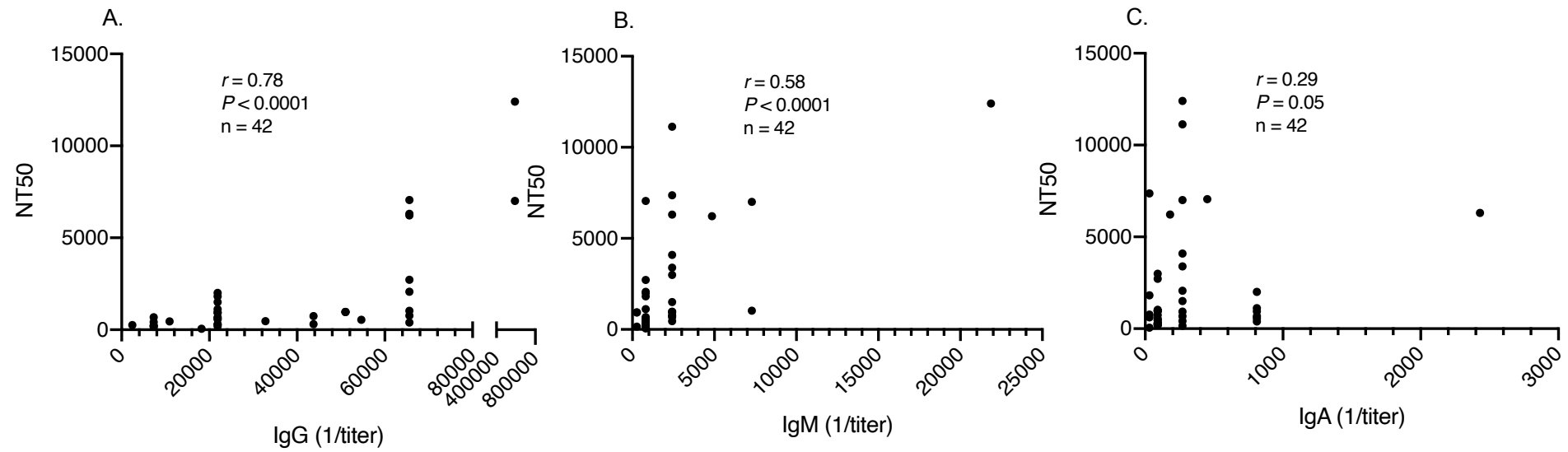
A. Propensity score before matching



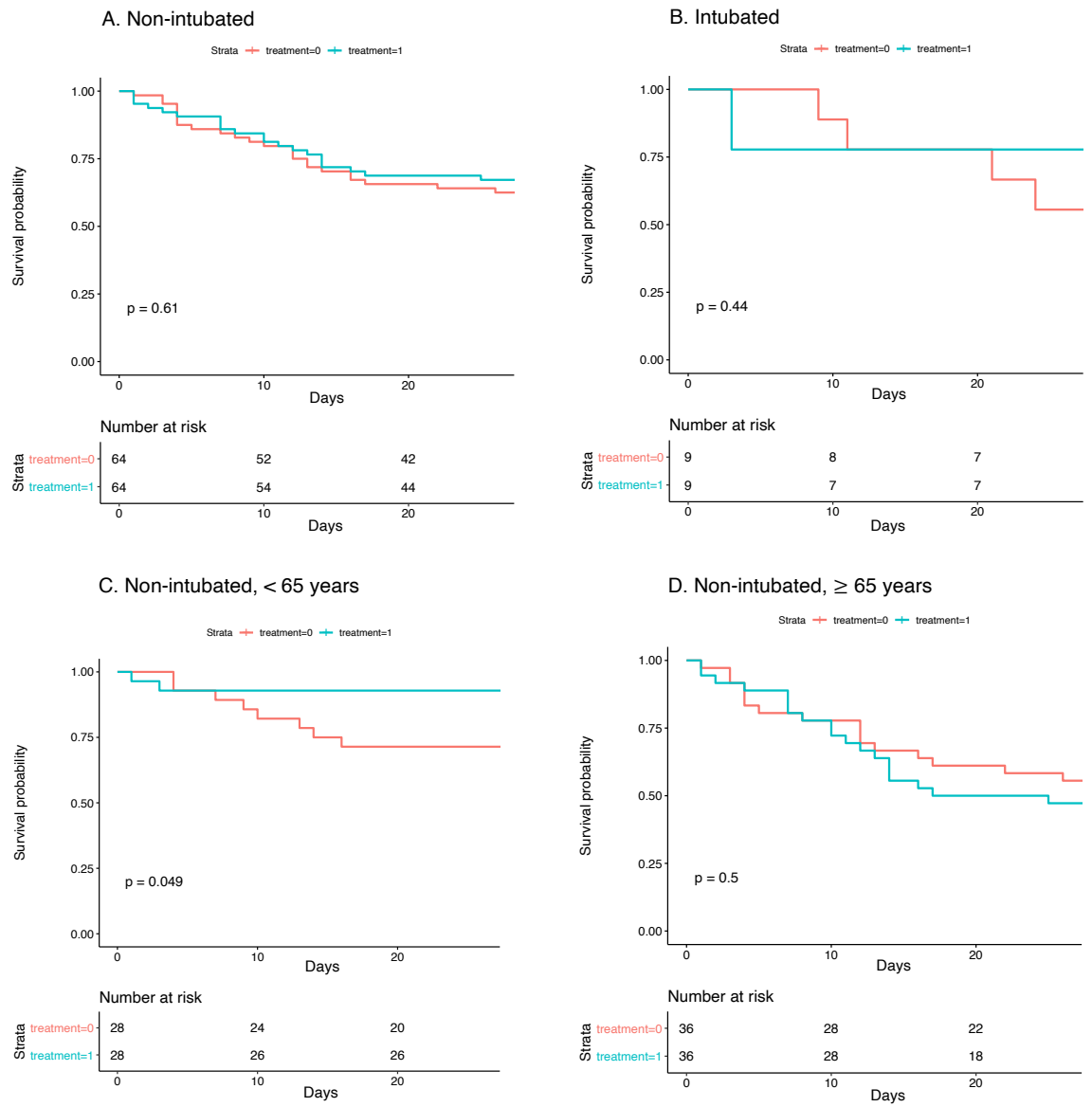
B. Propensity score after matching



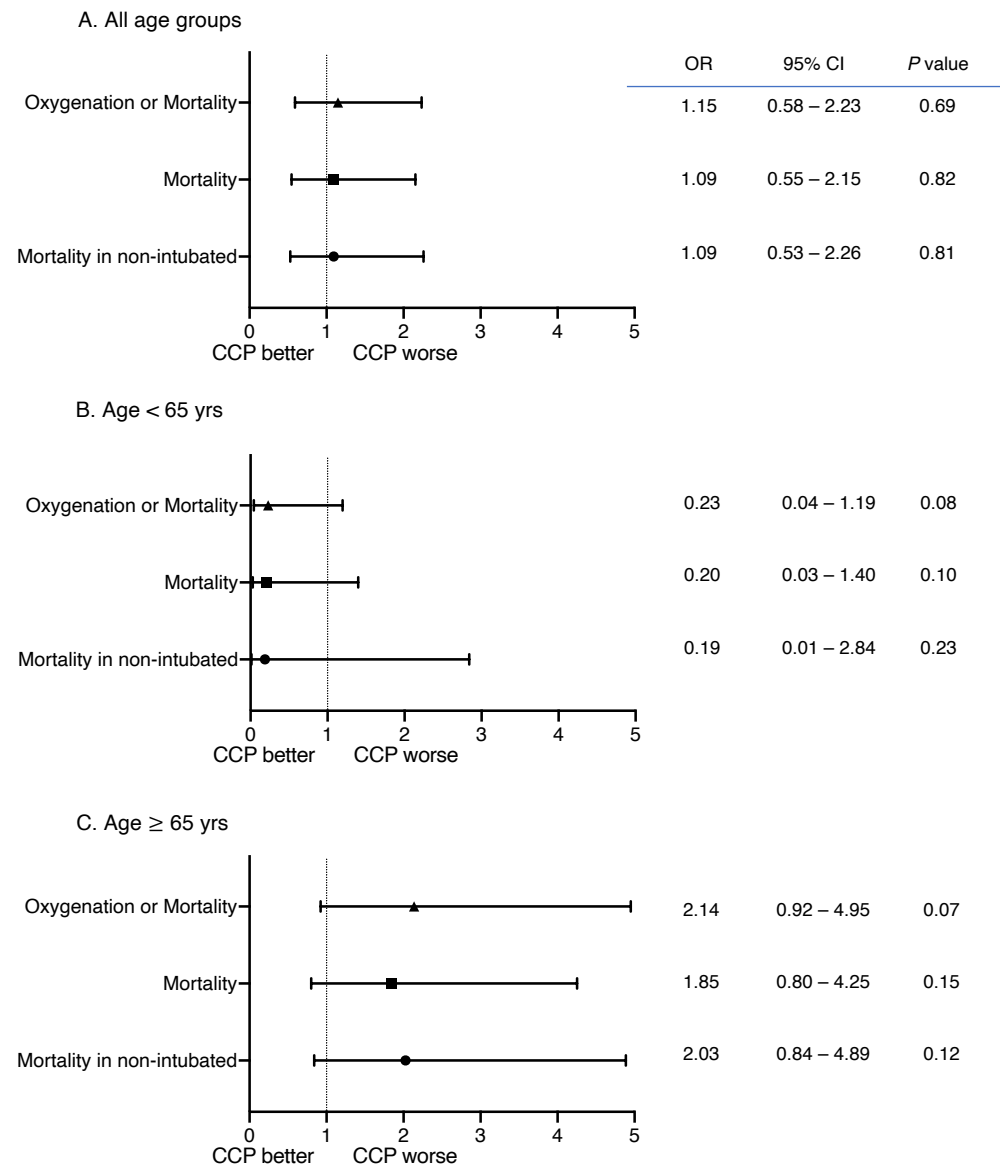
Supplemental Figure 1. Propensity scoring of CCP recipients and matched control patients. All patient comparisons before (A) and after (B) propensity score matching.



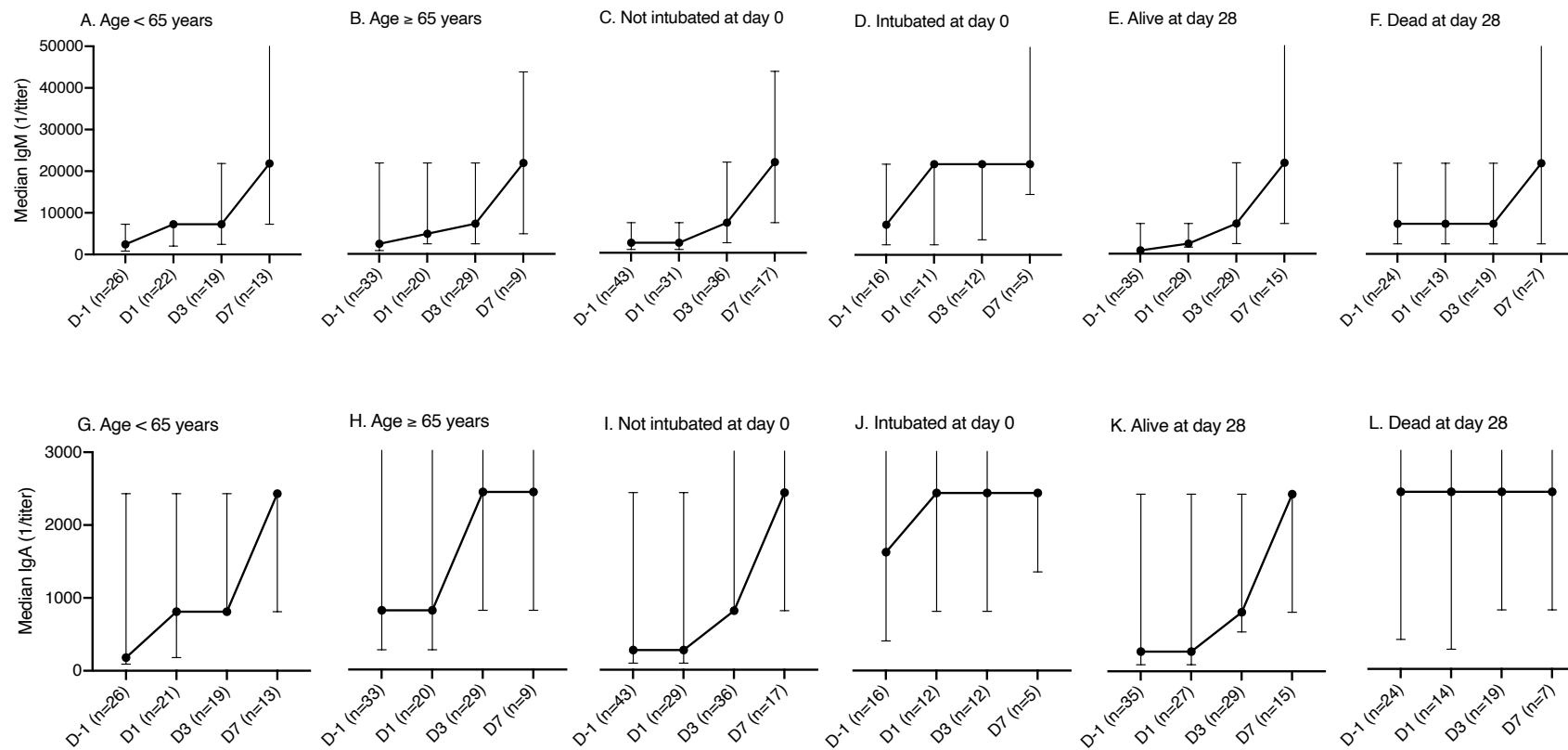
Supplemental Figure 2. Correlation between neutralizing antibody titers (NT50) and spike protein binding (A) IgG, (B) IgM and (C) IgA in CCP determined by ELISA. r : Spearman's correlation coefficient.



Supplemental Figure 3. Kaplan–Meier Plot of the Probability of Survival from time of transfusion to day 28 in CCP recipients (n = 73) vs matched controls (n = 73) stratified by age and intubation status at baseline. A. Non-intubated. B. Intubated. C. Non-intubated, < 65 years. D. Non-intubated, ≥ 65 years.



Supplemental Figure 4. Day 28 outcomes in CCP recipients (n = 90) vs controls (n = 258) presented by odds ratio and 95% confidence intervals in patients. Associations were adjusted for age, sex, BMI, race, ethnicity, comorbidities, baseline oxygen requirements, week of admission, corticosteroids, therapeutic anticoagulation use, D-dimer and lymphocyte counts. A. All age groups. B. Age < 65 years. C. Age ≥ 65 years. CCP, COVID-19 convalescent plasma; CI, confidence interval; OR, odds ratio.



Supplementary Figure 5. SARS-CoV-2 spike protein IgM and IgA titers determined by ELISA at baseline (D-1) and 1, 3 and 7 days after transfusion (D1, D3 and D7) in CCP recipients presented by variables of interest. (A) IgM < 65 years. (B) IgM ≥ 65 years. (C) IgM patients not intubated at day 0. (D) IgM patients intubated at day 0. (E) IgM patients alive at day 28. (F) IgM patients dead at day 28. (G) IgA age < 65 years. (H) IgA age ≥ 65 years. (I) IgA patients not intubated at day 0. (J) IgA patients intubated at day 0. (K) IgA patients alive at day 28. (L) IgA patients dead at day 28. The median titers and interquartile ranges are shown on the y-axis for each time point shown on the x-axis. X-axis shows days relative to convalescent plasma transfusion.

Supplemental Table 1. Baseline characteristics and outcomes in all CCP recipients transfused by admission day 3 (n = 90) and controls before propensity score matching (n = 258).

	All patients			< 65 yrs			≥ 65 yrs		
Characteristic	Case (n=90; 72 not on MV, 18 on MV)	Controls (n = 258; 243 not on MV, 15 on MV)	P value	Case (n=43; 36 not on MV, 7 on MV)	Controls (n=88; 78 not on MV, 10 on MV)	P value	Case (n=47; 36 not on MV, 11 on MV)	Controls (n=170; 165 not on MV, 5 on MV)	P value
Median age (IQR) - yr	66 (54-77)	72 (59-81)	0.002	54 (50-57)	56 (47.5- 59.5)	0.17	77 (70-82)	78 (72-84)	0.10
Not on MV	64.5 (54-75)	73 (61-81)	0.001	54 (48.5-58)	56 (48-59)	0.21	75 (70-82)	78 (72-84)	0.14
On MV	67.5 (56-78)	60 (49-66)	0.09	55 (50-56)	53.5 (46-60)	0.84	77 (69-79)	72 (66-75)	0.21
Age category – no. (%), yr									
<45	9 (10.0)	17 (6.5)	0.09	9 (20.9)	17 (19.3)	0.82	0	0	
45 to < 65	34 (37.7)	71 (27.5)		34 (79.0)	71 (80.6)		0	0	
65 to <75	21 (23.3)	60 (23.2)		0	0		21 (44.6)	60 (35.2)	0.23
75 to <85	20 (22.2)	70 (27.1)		0	0		20 (42.5)	70 (41.1)	
≥85	6 (6.6)	40 (15.5)		0	0		6 (12.7)	40 (23.5)	

Sex, BMI									
Male – no. (%)	51 (56.6)	152 (58.9)	0.71	27 (62.7)	57 (64.7)	0.82	24 (51.0)	95 (55.8)	0.55
Body-mass index, median (IQR) ^A	28.3 (23.9-34.5)	26.7 (22.8-32.2)	0.05	29.3 (27.1-34.9)	30.3 (25.2-36.1)	0.93	26.9 (22.0-32.8)	25.2 (21.9-29.2)	0.20
Ethnicity^B– no. (%)									
Hispanic	46 (51.1)	113 (43.8)	0.26	21 (48.8)	42 (47.7)	0.45	25 (53.1)	71 (41.7)	0.39
Non-Hispanic	32 (35.5)	117 (45.3)		14 (32.5)	36 (40.9)		18 (38.3)	81 (47.6)	
Unknown	12 (13.3)	28 (10.8)		8 (18.6)	10 (11.3)		4 (8.5)	18 (10.5)	
Race^B– no. (%)									
White	8 (8.8)	32 (12.4)	0.63	3 (6.9)	6 (6.8)	0.17	5 (10.6)	26 (15.2)	0.07
African American	23 (25.5)	69 (26.7)		16 (37.2)	20 (22.7)		7 (14.8)	49 (28.8)	
Others/Unknown	59 (65.5)	157 (60.8)		24 (55.8)	62 (70.4)		35 (74.4)	95 (55.8)	
Coexisting disorder – no. (%)									
Hyperlipidemia	50 (55.5)	143 (55.4)	0.98	22 (51.1)	35 (39.7)	0.21	28 (59.5)	108 (63.5)	0.62
Hypertension	74 (82.2)	222 (86.0)	0.38	30 (69.7)	65 (73.8)	0.62	44 (93.6)	157 (92.3)	0.76

Coronary artery disease	14 (15.5)	32 (12.4)	0.44	3 (6.9)	8 (9.0)	1.00	11 (23.4)	24 (14.1)	0.12
Congestive heart failure	16 (17.7)	76 (29.4)	0.03	4 (9.3)	15 (17.0)	0.23	12 (25.5)	61 (35.8)	0.18
Chronic pulmonary disease	30 (33.3)	89 (34.5)	0.84	13 (30.2)	22 (25.0)	0.52	17 (36.1)	67 (39.4)	0.68
Chronic kidney disease	26 (28.8)	107 (41.4)	0.03	9 (20.9)	25 (28.4)	0.35	17 (36.1)	82 (48.2)	0.14
Obesity (BMI \geq 30)	35 (38.8)	80 (31.0)	0.17	20 (46.5)	45 (51.1)	0.61	15 (31.9)	35 (20.5)	0.10
Morbid obesity (BMI \geq 35)	18 (20.0)	42 (16.2)	0.42	9 (20.9)	25 (28.4)	0.35	9 (19.1)	17 (10.0)	0.08
Diabetes	38 (42.2)	121 (46.9)	0.44	14 (32.5)	33 (37.5)	0.58	24 (51.0)	88 (51.7)	0.93
Symptom duration									
Median time from symptom onset to CCP,	7 (5-9)	n/a		8 (5-9)	n/a		6 (4-9.5)	n/a	

median days (IQR)									
Pharmacologic interventions – no. (%)									
Corticosteroids	84 (93.3)	163 (63.1)	<0.0001	38 (88.3)	55 (62.5)	0.002	46 (97.8)	108 (63.5)	<0.0001
Therapeutic anticoagulation	56 (62.2)	177 (68.6)	0.26	20 (46.5)	63 (71.5)	0.005	36 (76.6)	114 (67.0)	0.21
Oxygen on the day of transfusion – no. (%)									
Low-flow oxygen, 5L - 15L	61 (67.7)	208 (80.6)	<0.0001	31 (72.0)	65 (73.8)	0.68	30 (63.8)	143 (84.1)	<0.0001
High-flow oxygen or NIV	11 (12.2)	35 (13.5)		5 (11.6)	13 (14.7)		6 (12.7)	22 (12.9)	
MV	18 (20.0)	15 (5.8)		7 (16.2)	10 (11.3)		11 (23.4)	5 (2.9)	
Laboratory values on the day of transfusion, median (IQR)									
Lymphocyte count, x10 ⁹ /L	0.8 (0.5-1.1)	1.0 (0.8-1.4)	0.001	0.9 (0.7-1.2)	1.0 (0.8-1.4)	0.13	0.8 (0.5-1.0)	1.0 (0.7-1.4)	0.001
Not on MV	0.8 (0.6-1.1)	1.0 (0.8-1.5)	0.001	0.9 (0.7-1.1)	1.0 (0.8-1.5)	0.07	0.8 (0.5-1.0)	1.0 (0.7-1.4)	0.002
On MV	0.8 (0.5-1.6)	1.1 (0.6-1.2)	0.82	1.2 (0.6-3.9)	1.1 (0.9-1.2)	0.55	0.6 (0.5-1.6)	0.8 (0.6-1.2)	0.73

D-dimer, µg/ml	2.7 (1.1-8.3)	3.3 (1.4-7.9)	0.20	1.2 (0.6-3.2)	2.3 (1.2-5.6)	0.01	4.3 (2.1-11.2)	3.5 (1.7-11.0)	0.28
Not on MV	2.3 (1-5.4)	3.3 (1.4-8.5)	0.02	1.1 (0.6-2.7)	2.3 (1.1-6.0)	0.003	3.8 (2.1-9.9)	3.5 (1.7-11.0)	0.61
On MV	7.8 (2.2-14.3)	3.6 (1.5-4.7)	0.13	7.6 (1.8-9.3)	3.1 (1.5-4.7)	0.52	9.7 (2.2-17.0)	3.8 (2.0-4.2)	0.28
C-reactive protein, mg/dL	16.9 (10.3-27)	15.4 (7.7-27.2)	0.47	14.8 (8.4-22.4)	14.5 (8.1-26.6)	0.58	18.7 (14.9-28.8)	15.7 (7.6-27.4)	0.08
Not on MV	16.7 (9.5-27.1)	15.4 (7.8-27.4)	0.71	12.5 (7.3-20.1)	14.4 (8.2-26.6)	0.37	19.4 (14.8-28.9)	16 (7.7-27.6)	0.09
On MV	17.8 (14.8-24.8)	12 (6-26.2)	0.41	18.1 (11.5-28)	18.5 (6.3-26.2)	0.69	16.5 (14.9-22.9)	9.6 (4.6-12)	0.22
Mortality Outcomes – no. (%)									
Day 28 mortality	30 (33.3)	82 (31.7)	0.78	3 (6.9)	15 (17.0)	0.11	26 (57.7)	65 (39.8)	0.03
Not on MV	21 (29.1)	76 (31.2)	0.73	2 (5.5)	12 (15.3)	0.13	19 (52.7)	64 (38.7)	0.12
On MV	9 (50.0)	6 (40.0)	0.56	1 (14.2)	3 (30.0)	0.45	8 (72.7)	3 (60.0)	0.61
Day 28 clinical status – no. (%)									
Stable/better	57 (63.3)	172 (66.6)	0.56	39 (90.7)	70 (79.5)	0.10	17 (37.7)	97 (59.5)	0.01

Worse/dead	33 (36.6)	86 (33.3)		4 (9.3)	18 (20.4)		28 (62.2)	66 (40.4)	
------------	-----------	-----------	--	---------	-----------	--	-----------	-----------	--

Abbreviations: BMI, body mass index; IQR, interquartile range; MV, mechanical ventilation; NIV, noninvasive ventilation

A. Body-mass index is the weight in kilograms divided by the square of the height in meters.

B. Information on race and ethnic group was obtained from entries in the medical record, as reported by the patients.

Supplemental Table 2. Multivariable analysis of mortality at day 28 in CCP recipients (n = 90) vs controls (n = 258).

Independent Variable	Adjusted OR (95% CI)	P value
Treatment	1.09 (0.55 – 2.15)	0.82
Age	1.06 (1.04 – 1.09)	<0.0001
Female Sex	0.65 (0.37 – 1.13)	0.13
Race		
White	ref	
Black	0.73 (0.29 – 1.84)	0.51
Others	1.27 (0.49 – 3.29)	0.62
Ethnicity		
Hispanic	ref	
Non-Hispanic	1.03 (0.46 – 2.34)	0.93
Others	0.77 (0.30 – 1.99)	0.59
BMI	1.00 (0.96 – 1.04)	0.97
Admission week	0.66 (0.48 – 0.92)	0.01
Baseline O2 requirement		
Low-flow oxygen	ref	
High-flow oxygen	1.69 (0.78 – 3.64)	0.18

Mechanical ventilation	3.29 (1.25 – 8.62)	0.02
Baseline D-dimer	1.10 (0.85 – 1.42)	0.46
Lymphocyte count	0.75 (0.47 – 1.21)	0.24
Corticosteroids	2.38 (1.25 – 4.50)	0.008
Low-flow oxygen	2.68 (1.27 – 5.68)	0.009
< 65 years	5.08 (0.72 – 35.8)	0.10
≥ 65 years	1.95 (0.94 – 4.04)	0.07
Therapeutic anticoagulation	0.63 (0.36 – 1.12)	0.12
Low-flow oxygen	0.56 (0.29 – 1.10)	0.09
< 65 years	1.49 (0.29 – 7.63)	0.63
≥ 65 years	0.42 (0.21 – 0.83)	0.01
Hypertension	0.89 (0.36 – 2.19)	0.79
Diabetes Mellitus	0.98 (0.56 – 1.73)	0.95
Chronic pulmonary disease	0.77 (0.43 – 1.37)	0.37
Chronic kidney disease	1.50 (0.84 – 2.65)	0.17
Coronary artery disease	2.56 (1.14 – 5.78)	0.02
Congestive heart failure	0.74 (0.38 – 1.45)	0.38
Hyperlipidemia	1.47 (0.80 – 2.70)	0.21

Abbreviations: BMI, body mass index; CI, confidence interval; OR, odds ratio

Supplemental Table 3. Pre-transfusion IgG, IgM and IgA titer by patient variables in CCP recipients.

Variables	IgG (1/titer), median (IQR)	<i>P</i> value	IgM (1/titer), median (IQR)	<i>P</i> value	IgA (1/titer), median (IQR)	<i>P</i> value
Age (years)						
< 65	18,225 (2,430-196,829), n=22	0.19	2,430 (810-2,430), n=26	0.21	180 (90-2,430), n=26	0.04
≥ 65	54,675 (7,290-196,829), n=38		2,430 (810-21,870), n=33		810 (270-7,290), n=33	
Sex						
Male	21,870 (2,430-196,829), n=31	0.70	2,430 (810-21,870), n=30	0.72	810 (90-3,645), n=30	0.69
Female	43,740 (7,290-196,829), n=29		2,430 (810-7,290), n=29		810 (90-2,430), n=29	
Body mass index (kg/m²)						
< 30	43,740 (7,290-196,829), n=42	0.82	2,430 (810-21,870), n=41	0.73	810 (90-2,430), n=41	0.37

≥ 30	43,740 (4,253-196,829), n=18		2,430 (810-7,290), n=18		450 (90-2,430), n=18	
Mechanical ventilation						
No	21,870 (5,468-114,818), n=44	0.009	2,430 (810-7,290), n=43	0.01	270 (90-2,430), n=43	0.02
Yes	196,829 (65,610-196,829), n=16		7,290 (2,430-21,870), n=16		1,620 (405-6,075), n=16	
Hospital day of transfusion						
< 3	21,870 (7,290-196,829), n=46	0.46	2,430 (810-7,290), n=45	0.38	270 (90-2,430), n=45	0.41
≥ 3	98,415 (11,138-196,829), n=14		7,290 (810-21,870), n=14		1,620 (210-2,430), n=14	
Days from symptom onset to transfusion						
< 7	43,740 (7,290-196,829), n=27	0.80	2,430 (810-21,870), n=27	0.94	270 (90-2,430), n=27	0.46

≥ 7	43,740 (7,290-196,829), n=33		2,430 (810-7,290), n=32		810 (90-2,430), n=32	
Day 28 outcome						
Alive	14,580 (3,038-114,818), n=36	0.02	810 (810-7,290), n=35	0.02	270 (90-2,430), n=35	0.002
Dead	196,829 (27,338-196,829), n=24		7,290 (2,430-21,870), n=24		2,430 (405-7,290), n=24	

Abbreviations: CCP, COVID-19 convalescent plasma; IQR, interquartile range