

SUPPORTING INFORMATION:

CDH26 amplifies airway epithelial IL-4 receptor α signaling in asthma

Yuchen Feng^{1,2*}, Shengchong Chen^{1,2*}, Chenli Chang^{1,2}, Wenliang Wu^{1,2}, Dian Chen^{1,2}, Jiali Gao^{1,2}, Gongqi Chen^{1,2}, Lingling Yi^{1,2†}, Guohua Zhen^{1,2†}

1 Division of Respiratory and Critical Care Medicine, Department of Internal Medicine, Tongji Hospital, Tongji Medical College, Huazhong University of Science and Technology, Wuhan 430030, China;

2 Key Laboratory of Respiratory Diseases, National Health Commission of People's Republic of China, Wuhan 430030, China;

*These authors contributed equally to this work.

†Correspondence to: Guohua Zhen, Division of Pulmonary and Critical Care Medicine, Tongji Hospital, 1095 Jiefang Avenue, Wuhan 430030, China; e-mail: ghzhen@tjh.tjmu.edu.cn. Lingling Yi, Division of Pulmonary and Critical Care Medicine, Tongji Hospital, 1095 Jiefang Avenue, Wuhan 430030, China; e-mail: yilingling20061281@163.com

SUPPLEMENTARY METHODS

Histology and immunofluorescence staining

For immunofluorescence staining, tissue sections were incubated with anti-CDH26 antibody (Sigma-Aldrich Chemie GmbH, Munich, Germany, 1:100 dilution) and then incubated with Cy3 donkey anti-rabbit secondary antibody (Boster, Wuhan, China). Double staining was performed in immunofluorescence staining by using two different host species antibodies. The combinations of the primary antibodies include CDH26 (Sigma-Aldrich, 1:100 dilution) with human IL-4R α antibody (R&D system, 1:20 dilution), CDH26 (Sigma-Aldrich, 1:100 dilution) with mouse IL-4R α antibody (R&D system, 1:200 dilution). Paraffin tissue sections were deparaffinization, rehydration, and processed with pH9.0 Tris-EDTA retrieval buffer (Servicebio, Wuhan, China) before blocking with 10% donkey serum. Paraffin tissue sections were incubated with primary antibodies at 4°C overnight and then incubated with Cy3 or FITC conjugated secondary antibodies (donkey-anti mouse or rabbit IgG, Wuhan, China) at 1:200 in the dark for 1 hour at room temperature. Nuclei were stained with DAPI (Servicebio, Wuhan, China). All photographs were taken by using a fluorescence microscope (Olympus Corporation, Japan).

Assessment of airway inflammation

Cell counts for macrophages, eosinophils, lymphocytes, and neutrophils in bronchoalveolar lavage fluid (BALF) were performed. The severity of peri-bronchial inflammation in H&E-stained mouse lung sections was scored using the following features: 0, normal; 1, few cells; 2, a ring of inflammatory cells (1 cell layer deep); 3, a

ring of inflammatory cells (2–4 cells deep); 4, a ring of inflammatory cells (> 4 cells deep).

Periodic acid-Schiff (PAS) staining

Lung sections were stained with PAS (Servicebio, Wuhan, China) for detection of mucus. The number of PAS-staining-positive cells was counted in five random fields for each lung section at 200× magnification.

The sequence of CDH26 siRNA

The sequence of CDH26 siRNA (sense strand) was: 5'-GGGACUUUCCCAGAA GCAATTUUGCUUCUGGGAAAGUCCCTT-3'. The sequence of negative control siRNA was: sense: 5'-UUCUCCGAACGUACGUTT-3'; antisense: 5'-ACGUG ACACGUUCGGAGAATT-3'.

SUPPLEMENTARY TABLES

Table S1. Subject characteristics.

	Healthy controls	Asthma patients	P value
Number	17	56	
Age, y	35.94+9.43	38.09+11.33	0.574
Sex, M: F, %F	5:12, 70.6	13:45, 80.4	0.604
Body mass index	22.15+3.32	22.33+3.19	0.716
FEV ₁ , %predicted	89.82+32.63	79.15+19.89	0.007
Methacholine PD20, mg	2.505+0	0.177+0.34	<0.0001
Sputum eosinophil, %	1.63+2.77	17.03+18.85	<0.0001
FeNO, ppb	15.612+11.10	100.80+60.84	<0.0001

Note: Values were presented as mean \pm SD.

Abbreviations: FeNO, fraction of exhaled nitric oxide; FEV₁, forced expiratory volume in the first second; PD20, provocative dosage required to cause a 20% decline in FEV₁. The minimal and maximal provocative dosages were 0.01 and 2.505 mg, respectively.

Table S2. Primers for quantitative PCR

Gene	Species	Primer sequence (5'-3')	
GUSB	Human	Forward	GTCTGCGGCATTTTGTCGG
		Reverse	CACACGATGGCATAGGAATGG
GAPDH	Human	Forward	AAGGTGAAGGTCGGAGTCAAC
		Reverse	GGGGTCATTGATGGCAACAATA
CDH26	Human	Forward	CCTACCTCACGTCTACAGCGA
		Reverse	TTGAACCCAAAGAGTCCAGCA
IL-4R α	Human	Forward	AAATCGTGAAC TTTGTCTCCGT
		Reverse	CCCAGTGCCCTCTACTCTCAT
MUC5AC	Human	Forward	CGACA ACTACTTCTGCGGTGC
		Reverse	GCACTCATCCTTCCTGTCGTT
MUC5B	Human	Forward	CCCGTGTTGTCATCAAGGC
		Reverse	CAGGTCTGGTTGGCGTATTTG
CCL26	Human	Forward	TTGAGGCTGAGCCAAAGACC
		Reverse	GCCCTTCTCAGGTTTCTCCC
CCL24	Human	Forward	ACATCATCCCTACGGGCTCT
		Reverse	CTTGGGGTCGCCACAGAAC
CCL11	Human	Forward	GAAAGCTGTGATCTTCAAGACC
		Reverse	GGCTTTGGAGTTGGAGATTTTT
Gapdh	Mouse	Forward	AGAGAGGCCAGCTACTCG
		Reverse	GGCACTGCACAAGAAGATGC
Cdh26	Mouse	Forward	CCAGCAGAAATCCTTCCAAGGAG
		Reverse	CGATCCAAGAGAAGATGGGTTCTC
Il-4R α	Mouse	Forward	TGACCTCACAGGAACCCAGGC
		Reverse	GAACAGGCAAAACAACGGGAT
Muc5ac	Mouse	Forward	CAGGACTCTCTGAAATCGTACCA
		Reverse	GAAGGCTCGTACCACAGGG
Muc5b	Mouse	Forward	CTACTCGAACTGCTTGTTTGAC
		Reverse	CTTG TAGCAA ACTTTGTCCCTC
Ccl26	Mouse	Forward	ATCCCATGGAGCTGGGTGTA
		Reverse	CCTGGCTGGACACAGAATTG
Ccl24	Mouse	Forward	CAGCCTTCTAAAGGGGCCAA
		Reverse	GCTGGTCTGTCAAACCCCAA
Ccl11	Mouse	Forward	CAACAGATGCACCCTGAAAGC
		Reverse	TGATATTCCCTCAGAGCACGTCTT
Il-4	Mouse	Forward	GTCATCCTGCTCTTCTTTCTCG
		Reverse	CTCTCTGTGGTGTTCTTCGTTG
Il-13	Mouse	Forward	CTGAGCAACATCACACAAGACC
		Reverse	AATCCAGGGCTACACAGAACC

SUPPLEMENTARY FIGURES

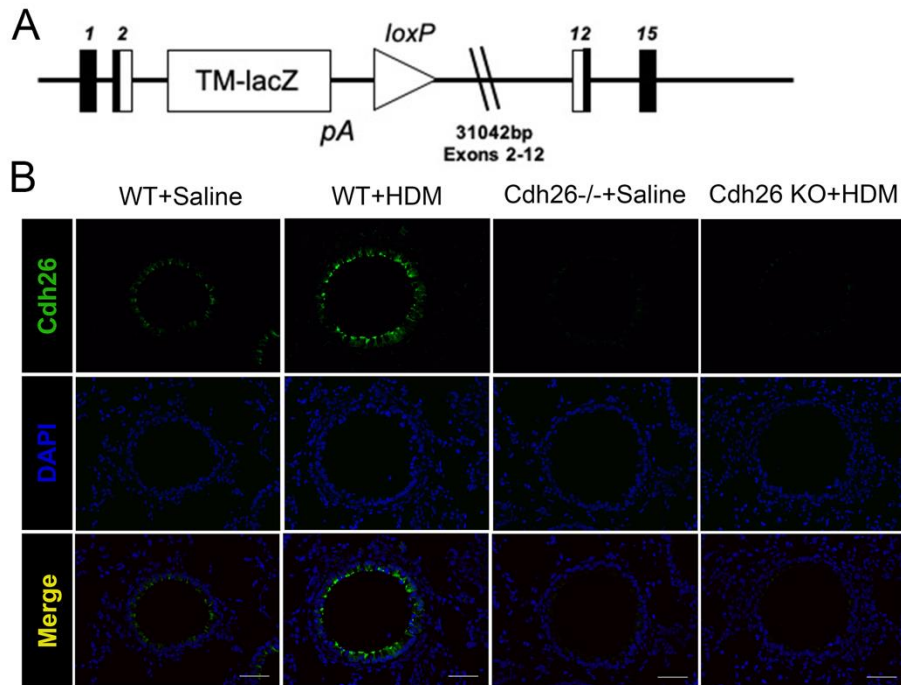


Figure S1. Generation of *Cdh26*^{-/-} mice. A) Primer Strategy and scheme of *Cdh26*^{-/-} mice. Exon 2 to exon 12 of *cdh26* gene including 31,042 base pair was knocked out. **B)** Representative images of Cdh26 immunofluorescence staining in mouse lung sections. Scale bar, 50 μ m. n =5-8 mice per group.

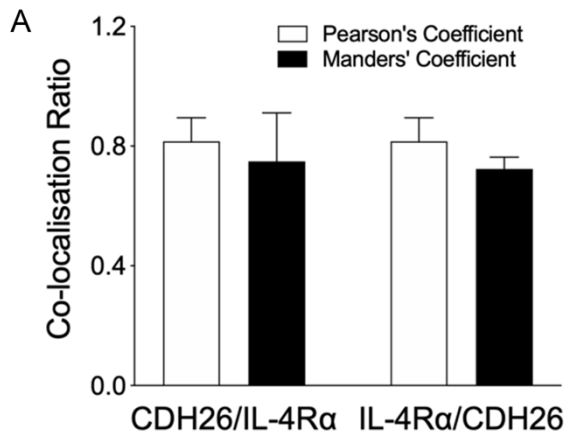


Figure S2. Cdh26 and Il-4R are co-located in airway epithelium in mouse.

Quantitative analysis of protein colocalization between Cdh26 and Il-4Rα proteins by Pearson and Manders' coefficients. Colocalization of Cdh26 and Il-4Rα were analyzed using ImageJ plug-in Coloc2. Data are mean \pm SD.

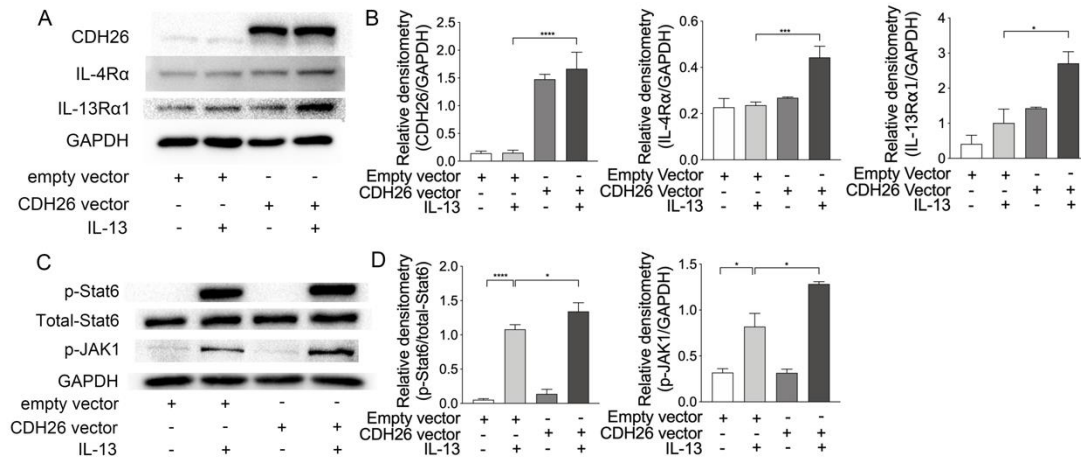


Figure S3. CDH26 promotes IL-13-induced IL-4Rα expression, JAK-1 and Stat6 phosphorylation. **A)** The protein levels of IL-4Rα, IL-13Rα1 in BEAS-2B cells after transfection with empty or CDH26 cDNA expression vector with or without IL-13 stimulation at 48h were detected by Western blotting. **B)** Densitometry assay of the Western blotting results was analyzed using ImageJ. **C)** IL-13 stimulation increased JAK1 and STAT6 phosphorylation at 30min, and CDH26 vector transfection contributed IL-13-induced JAK1 and STAT6 phosphorylation. Densitometry of phospho-JAK1 relative to total GAPDH and phosphor-STAT6 relative to total STAT6. **D)** Densitometry assay of the Western blotting results was analyzed using ImageJ. The data are representative of three independent experiments. Data are mean ± SD. *P < 0.05; **P < 0.01; ***P < 0.001; ****P < 0.0001(one-way ANOVA followed by Tukey's multiple comparison test).

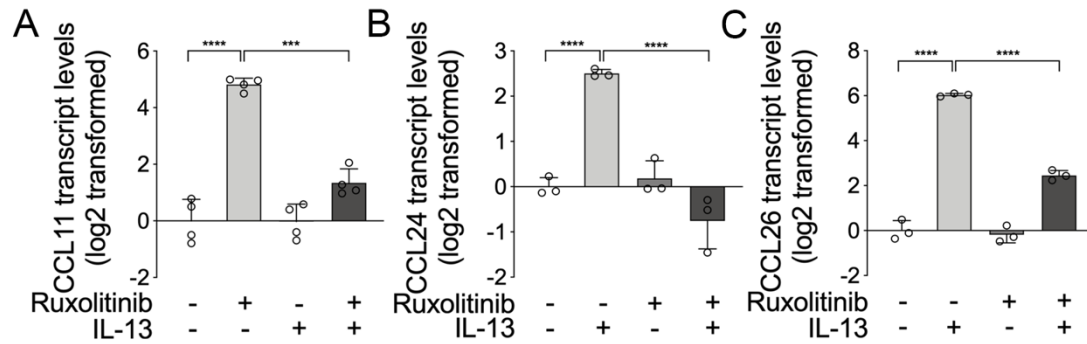


Figure S4. Selective JAK1/2 inhibitor Ruxolitinib blocked IL-13-induced CCL11, CCL24, CCL26 transcript expression. A-C) BEAS-2B cells were treated with vehicle or ruxolitinib (100nM) with or without IL-13 (20ng/mL) stimulation for 48h. The mRNA levels of *CCL11* (A), *CCL24* (B), *CCL26* (C) in BEAS-2B cells were determined by quantitative PCR. The transcript level was expressed as log2 transformed and relative to the mean of control group. n = 3-4 wells per group. Data are mean \pm SD. *P < 0.05; **P < 0.01; ***P < 0.001; ****P < 0.0001 (one-way ANOVA followed by Tukey's multiple comparison test).

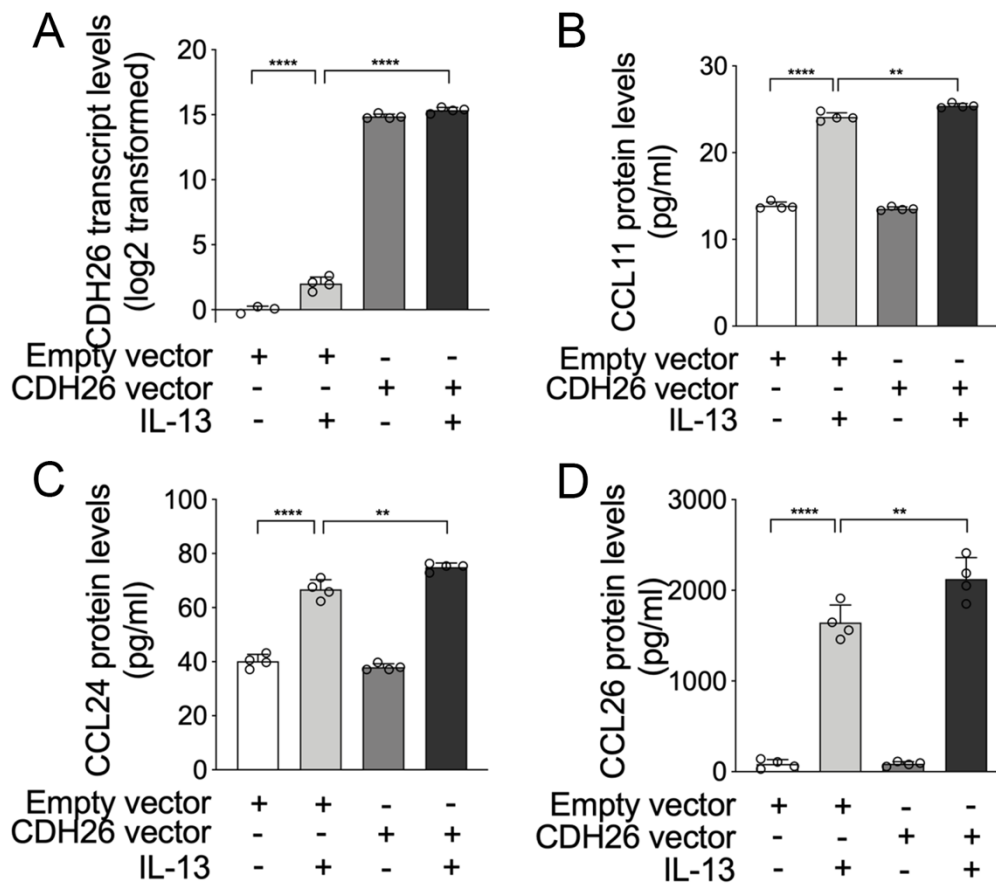


Figure S5. CDH26 regulates Eotaxin-1, Eotaxin-2, Eotaxin-3 expression in human bronchial epithelial cells. **A)** The transcript levels of *CDH26* after transfection with empty or CDH26 cDNA expression vector with or without IL-13 (20ng/mL) stimulation for 48h were detected by quantitative PCR. **B-D)** The protein levels of CCL11 (**B**), CCL24 (**C**) and CCL26 (**D**) in cell culture media after transfection empty or CDH26 cDNA expression vector with or without IL-13 stimulation were detected by ELISA. n = 4 wells per group. Data are mean \pm SD. *P < 0.05; **P < 0.01; ***P < 0.001; ****P < 0.0001(one-way ANOVA followed by Tukey's multiple comparison test).