

Natural history, trajectory, and management of mechanically ventilated COVID-19 patients in the United Kingdom

Supplementary Appendix

Brijesh V Patel*, Shlomi Haar, Rhodri Handslip, Teresa Mei-Ling Lee, Sunil Patel, J. Alex Harston, Feargus Hosking-Jervis, Donna Kelly, Barnaby Sanderson, Barbara Bogatta, Kate Tatham, Ingeborg Welters, Luigi Camporota, Anthony C Gordon, Matthieu Komorowski, David Antcliffe, and John R Prowle, Zudin Puthuchery, A. Aldo Faisal*; on behalf of the United Kingdom COVID-ICU National Service Evaluation.

***Clinical Science contact** – Dr Brijesh V Patel MD PhD. Clinical Senior Lecturer & Consultant in Intensive Care Medicine. Division of Anaesthetics, Pain Medicine & Intensive Care, Department of Surgery & Cancer, Faculty of Medicine, Imperial College London; Department of Adult Intensive Care, The Royal Brompton and Harefield NHS Foundation Trust, Sydney Street, London SW3 6NP

email: brijesh.patel@imperial.ac.uk

***Data Science contact** – Professor A. Aldo Faisal PhD. Professor of AI & Neuroscience. Dept. Of Computing & Dept. Of Bioengineering and Behaviour Analytics Lab, Data Science Institute and UKRI Centre for Doctoral Training in AI for Healthcare, Imperial College London, SW7 2AZ London, UK, and MRC London Institute for Medical Sciences, London W12 0NN UK

email: aldo.faisal@imperial.ac.uk

Table of Contents

UK COVID-ICU NATIONAL SERVICE EVALUATION CONSORTIUM MEMBERS	3
STROBE STATEMENT	4
DETAILED METHODS	7
TABLE S1 - INDIVIDUAL SITE CONTRIBUTIONS	11
TABLE S2 - VARIABLES INCLUDED IN LOGISTIC REGRESSION MODELS	12
TABLE S3 - DISTRIBUTION OF CO-MORBIDITIES WITH A) SEVERITY ON ADMISSION AND B) ICU OUTCOME ..	13
TABLE S4 - COMPARISON BETWEEN COVID-ICU AND ICNARC.....	14
TABLE S5 - THE APPLICATION, MEDIAN START DATE AND DURATION OF THE FIRST EPISODE OF INTERVENTIONS.....	15
TABLE S6 - CLINICAL AND PHYSIOLOGICAL CHARACTERISTICS, OUTCOMES AND INTERVENTIONS ACCORDING TO RESOLUTION OF HYPOXAEMIA OVER FIRST WEEK OF INVASIVE MECHANICAL VENTILATION.	16
TABLE S7 - TIME SERIES MIXED MODEL ANOVA ACCORDING TO RESOLUTION OF HYPOXAEMIA OVER FIRST WEEK OF MECHANICAL VENTILATION.	17
TABLE S8 - UNI- AND MULTI-VARIATE MODEL ANALYSIS OF FACTORS ASSOCIATED WITH PROGRESSION OF HYPOXAEMIA OVER THE FIRST WEEK OF INVASIVE MECHANICAL VENTILATION	18
TABLE S9 - CLINICAL AND PHYSIOLOGICAL CHARACTERISTICS, OUTCOMES AND INTERVENTIONS ACCORDING TO PRONE RESPONSIVENESS.....	19
TABLE S10 - TIME SERIES MIXED MODEL ANOVA ACCORDING TO PRONE RESPONSIVENESS.	20
TABLE S11 - UNI- AND MULTI-VARIATE MODEL ANALYSIS OF PRE-PRONATION FACTORS ASSOCIATED PRONE RESPONSIVENESS.....	21
TABLE S12 - UNI- AND MULTI-VARIATE MODEL ANALYSIS OF POST- PRONATION FACTORS ASSOCIATED PRONE RESPONSIVENESS.	22
TABLE S13- CLINICAL AND PHYSIOLOGICAL CHARACTERISTICS, OUTCOMES AND INTERVENTIONS ACCORDING TO ICU OUTCOME.	23
TABLE S14 - TIME SERIES MIXED MODEL ANOVA ACCORDING TO ICU OUTCOME.....	24
TABLE S15- UNI- AND MULTI-VARIATE MODEL ANALYSIS OF FACTORS ASSOCIATED WITH ICU MORTALITY. 25	
TABLE S16 - TIME SERIES MIXED MODEL ANOVA ACCORDING TO ARDS ON ADMISSION	26
TABLE S17 - MISSING VALUES FOR EACH PARAMETER – BY SITE.....	27
TABLE S18 - MISSING VALUES FOR EACH PARAMETER – BY DAY.....	28
FIGURE S1 – ADJUNCTIVE INTERVENTIONS APPLICATION	29
FIGURE S2 – TIME-SERIES COMPARISON BETWEEN RESOLVERS AND NON- RESOLVERS.....	30
FIGURE S3 – TIME-SERIES COMPARISON BETWEEN PRONE RESPONDERS AND NON-RESPONDERS.....	31
FIGURE S4 – LOGISTIC REGRESSION FOR PRONE RESPONSE BASED ON POST-PRONE PHYSIOLOGY.....	32
FIGURE S5 – TIME-SERIES COMPARISON BETWEEN ADMISSION ARDS SEVERITIES	33
FIGURE S6 – TIME SERIES COMPARISON BETWEEN OUTCOME GROUPS	34
FIGURE S7 – SITE VARIATION OF APPLICATION OF INTERVENTIONS	35
FIGURE S8 – OXYGENATION INDEX DEPENDENCY ON P/F RATIO	36

UK COVID-ICU National Service Evaluation Consortium members

Study Committee: Brijesh V Patel, Shlomi Haar, Rhodri Handslip, David Antcliffe, Ingeborg Welters, Luigi Camporota, John Prowle, Zudin Puthuchery, and Aldo Faisal

Writing Committee: Brijesh V Patel, Shlomi Haar, David Antcliffe, Ingeborg Welters, Barnaby Sanderson, Luigi Camporota, John Prowle, Zudin Puthuchery, and Aldo Faisal

Data Science Team: Dr Brijesh Patel, Dr Rhodri Handslip, Feargus Hosking-Jervis, Dr Matthieu Komorowski, Dr Shlomi Haar, Professor Aldo Faisal

Site Contributions (*Site leads): **Aintree University Hospitals NHS Foundation Trust:** Emma Addie; Barbara Borgatta*; Roz Chisholm; Alexandra Crocokft; Anna Gilfedder; Peter Harding; Gladys Madzamba; Namratha Mathai; Maya Patel; Amie Reddy; Leanne Smith; Ian Turner-Bone; Lilian Wajero; Raegan Wignall; Laura Wilding. **Northern health and social care Trust:** (Antrim Area hospital, Causeway hospital) Paul Johnston*; Ciaran Mackle; Nicholas McNaughton; Scott Rafferty. **Guys & St Thomas' NHS Foundation Trust:** Gill Arbane; Luigi Camporota*; Alison Dixon; Barnaby Sanderson*. **Imperial College Healthcare NHS Trust:** David Antcliffe*; Mariana Ferrari Barbosa; Carlos Gomez; Abdalla Kaware, Fady Tarek Khalil, Matthieu Komorowski*, Maie Templeton, Raja Bilal Zafar. **University Hospitals of Leicester NHS Trust:** Mrs Michelle Craner; Mrs Sarah Edwards: Neil Flint; Dr Graziella Isgro; Hakeem Yusuff*. **Liverpool University Hospitals NHS Foundation Trust:** Jaime Fernandez Roman; Oliver Hamilton; Brian Johnson; Emily Johnson; Maria Lopez Martinez; Suleman Mulla; David Shaw; Alicia Waite; Victoria Waugh; Ingeborg Welters*; Karen Williams. **Newcastle upon Tyne Hospitals NHS Foundation Trust:** Benjamin Evans; Lewis Gray; Sam Horne; Natalie Jones; Donna Kelly*; Rebecca Lawrance; Jennifer Partridge; Antonia Snell; Lucy Venyo; Thomas Walker. **Royal Brompton and Harefield NHS Foundation Trust:** Frank Barrett; Sebastian Cabero Alonso; Masoomeh Farazdaghi; Ben Garfield; Clara Hernandez Caballero; Stephane Ledot; Teresa Lee; James Leslie; Helen McGuire; Lorraine O'Connor; Maurizio Passariello; Brijesh Patel*; Sunil Patel; Alex Rosenberg; Jennifer Thomson; Dhulamini Wijeratne. **Royal Cornwall Hospitals NHS Trust:** Sarah Bean; Karen Burt; Rosanna Jury; Oliver Quick; Michael Spivey*; Josh Thorns. **Barts Health NHS Trust:** Sana Ali; Thomas Beazer; Matilda Boa; Rosemarie Burd; Zoe Burdon; J Burgess; Natalie Cameron; A Daou; Charles Fadipe; FAJ Freer; Gayle Fung; Lindsey Iles; Aaron Jones; Agne Jovaisaite; Gabriella Knight; Veda Kudva; J Lampard; Ruby Lightfoot; Nicholas Low; Caroline Olabisi; Osama Omrani; Rebecca Pease; John Prowle*; Zudin Puthuchery*; Johnathan Mak; Aamir Saiyed; Maria Salamanca; Gauri Saxena; W Stanley; Nida Tahir; Yize Wan; Anton Weatherhead. **Royal Papworth Hospital NHS Foundation Trust:** Linzi Dunham; Melissa Earwaker*; Amy Gladwell. **Royal Marsden Hospital NHS Foundation Trust:** Thomas Bemand; Ethel Black; Samantha Coulson; Arnold Dela Rosa; Shamen Jhanji; Ravishankar Rao Baikady; Kate Tatham; Zoska Webb*. **South Tyneside and Sunderland NHS Foundation Trust:** Sarah Cornell; Anthony Rostron*; Fiona Wakinshaw; Lindsey Woods.

STROBE statement

	Item No	Recommendation	Page No
Title and abstract	1	(a) Indicate the study's design with a commonly used term in the title or the abstract	1-4
		(b) Provide in the abstract an informative and balanced summary of what was done and what was found	4
Introduction			
Background/rationale	2	Explain the scientific background and rationale for the investigation being reported	5-7
Objectives	3	State specific objectives, including any prespecified hypotheses	7
Methods			
Study design	4	Present key elements of study design early in the paper	8-10
Setting	5	Describe the setting, locations, and relevant dates, including periods of recruitment, exposure, follow-up, and data collection	8
Participants	6	(a) Give the eligibility criteria, and the sources and methods of selection of participants. Describe methods of follow-up	8
		(b) For matched studies, give matching criteria and number of exposed and unexposed	NA
Variables	7	Clearly define all outcomes, exposures, predictors, potential confounders, and effect modifiers. Give diagnostic criteria, if applicable	8-10
Data sources/ measurement	8*	For each variable of interest, give sources of data and details of methods of assessment (measurement). Describe comparability of assessment methods if there is more than one group	8-10
Bias	9	Describe any efforts to address potential sources of bias	8-10
Study size	10	Explain how the study size was arrived at	8

Quantitative variables	11	Explain how quantitative variables were handled in the analyses. If applicable, describe which groupings were chosen and why	8-10
Statistical methods	12	(a) Describe all statistical methods, including those used to control for confounding	8-10
		(b) Describe any methods used to examine subgroups and interactions	8-10
		(c) Explain how missing data were addressed	8
		(d) If applicable, explain how loss to follow-up was addressed	NA
		(e) Describe any sensitivity analyses	8-10
Results			
Participants	13*	(a) Report numbers of individuals at each stage of study—e.g., numbers potentially eligible, examined for eligibility, confirmed eligible, included in the study, completing follow-up, and analysed	11
		(b) Give reasons for non-participation at each stage	11
		(c) Consider use of a flow diagram	Fig1
Descriptive data	14*	(a) Give characteristics of study participants (eg demographic, clinical, social) and information on exposures and potential confounders	11
		(b) Indicate number of participants with missing data for each variable of interest	NA
		(c) Summarise follow-up time (eg, average and total amount)	11-14
Outcome data	15*	Report numbers of outcome events or summary measures over time	11-14

Main results	16	(a) Give unadjusted estimates and, if applicable, confounder-adjusted estimates and their precision (eg, 95% confidence interval). Make clear which confounders were adjusted for and why they were included (b) Report category boundaries when continuous variables were categorized (c) If relevant, consider translating estimates of relative risk into absolute risk for a meaningful time period	11-14 NA NA
Other analyses	17	Report other analyses done—e.g. analyses of subgroups and interactions, and sensitivity analyses	11-14
Discussion			
Key results	18	Summarise key results with reference to study objectives	15-18
Limitations	19	Discuss limitations of the study, taking into account sources of potential bias or imprecision. Discuss both direction and magnitude of any potential bias	18-19
Interpretation	20	Give a cautious overall interpretation of results considering objectives, limitations, multiplicity of analyses, results from similar studies, and other relevant evidence	20-21
Generalisability	21	Discuss the generalisability (external validity) of the study results	20-21
Other information			
Funding	22	Give the source of funding and the role of the funders for the present study and, if applicable, for the original study on which the present article is based	3

*Give information separately for exposed and unexposed groups.

Note: An Explanation and Elaboration article discusses each checklist item and gives methodological background and published examples of transparent reporting. The STROBE checklist is best used in conjunction with this article (freely available on the Web sites of PLoS Medicine at <http://www.plosmedicine.org/>, Annals of Internal Medicine at <http://www.annals.org/>, and Epidemiology at <http://www.epidem.com/>). Information on the STROBE Initiative is available at <http://www.strobe-statement.org>.

Detailed Methods

Study design: We performed a multicentre, observational cohort study in patients with SARS-CoV-2 infection who required mechanical ventilation for severe Covid-19 infection in the United Kingdom.

Exposure: Adult patients (aged ≥ 18 years) with laboratory confirmed SARS-CoV-2 infection who required mechanical ventilation in the United Kingdom between March 1st and August 31st 2020.

Ethical approval: Each site registered the protocol as a service evaluation, as approved by the United Kingdom's Health Research Authority. All patients lacked capacity, and the need for individual informed consent was waived for collection of data during routine care, with no breach of privacy or anonymity. The "Strengthening the Reporting of Observational Studies in Epidemiology" statement guidelines were applied (see supplementary appendix pages 4-5) ¹.

Data collection and procedures:

We set up a data processing pipeline where only routine, anonymised data was collected with no change to clinical care. Patients were identified through daily review of paper or electronic medical records using a standardised case record form (CRF), with retrospective and prospective data collection permitted. Data was extracted from either electronic healthcare records (EHRs) or paper-based records. Sites were given the option to submit their EHRs either in a predetermined format set by the Covid-ICU own secure REDCap database form fields or as a raw dump of data in CSV file format, that was then record-by-record manually screened for data consistency. Paper-based ICU operations sites were able to enter the data directly by the site representative into our RedCAP Electronic Data Capture (RedCAP v10.0.10; Vanderbilt University, US, local version hosted by Imperial College servers in the UK).

Each site's representative was given a unique username and password for data entering-only access to the database to connect via an encrypted online connection. Confidentiality was protected through a de-identified study number. A range of ICUs were included including secondary and tertiary care organisations (Table S1). In brief, the CRF captured admission demographics, twice daily (8am and 8pm) respiratory physiology and blood gas results, daily ARDS interventions, daily Covid interventions, daily blood results and outcome status. Patients were categorized within 48 hours of invasive mechanical ventilation (IMV) based on their PaO₂/FIO₂ ratio into no ARDS, mild, moderate, and severe ARDS ².

Missing data and imputation: We made the heuristic decision of setting the threshold of data completeness (i.e. missingness) to balance of patients we could include against the number of variables. We defined this by examination of the available variables in the first 48 hours of admission or the last 36 hours before prone or the first 36 hours after prone. If in these 3/4 twelve-hour measurement points, all were missing, then we counted this patient as ‘missing’ data. The missingness is thus the percentage of patients where there is no measurement in this 36/48-hour window for a modality. Percentage of missing data per modality are shown in Table S2, and details of missing data are shown in Table S18. Data imputation was applied using k-nearest neighbours’ algorithm. We ran the imputation with a k of 3, 5, and 7 both on the continuous variable and on the quartile categorization. The maximal odds ratio difference between the imputation approaches for each variable was 0.04 (IQR 0.03-0.07) and had no effect on the significance. All reported results are based on 5-nearest neighbours’ imputation on the quartile categorization.

Resolution of hypoxaemia over first week of IMV. Hypoxaemia was categorised as per Berlin definition of ARDS². First week resolvers were defined by moving over the first week of mechanical ventilation to a less severe ARDS hypoxaemia category, and vice-versa for non-resolvers^{2,3}. In addition to the patients who resolved, also those who remained mild or got discharged were considered “resolvers” while those who deteriorate, remained moderate or severe, or died, were considered “non-resolvers”.

Responsiveness to prone position. We considered the longer-term effect on PaO₂/FiO₂ after prone positioning and defined prone responsiveness as maintenance of a mean PaO₂/FiO₂ >20kPa over 7 days after the first prone episode. Finally, we defined a proning window as a PaO₂/FiO₂<20kPa, with an FiO₂≥0.6, a PEEP≥5cmH₂O to assess opportunities to apply the intervention. Prone windows were measured at 8am and 8pm with the ventilator and arterial blood gas evaluation.

Interventions periods. The incidence and duration of interventions as well as ventilation setting were analysed and reported to current strategies e.g. low tidal volume ventilation and ARDSNet PEEP tables. We defined an intervention period as a daily application of the intervention with a day of no intervention defining the end of the current period and the onset of the next period.

Statistical analysis. Descriptive variables are expressed as percentage, or median and interquartile range (IQR), as appropriate. The distribution of each variable on each day in each outcome group was

tested for normality using the Shapiro-Wilks test, and where necessary and appropriate, because of skewed distributions, continuous variables were log-transformed (e.g. FiO_2). Continuous variables were analysed with Mann Whitney U or Kruskal Wallis tests, as appropriate. Categorical variables were compared using Fisher's exact test or the Chi-square test for equal proportion, as appropriate. All statistical tests were 2-sided and $p \leq 0.05$ was considered statistically significant. For group-wise analysis, the outcome of the therapies was measured as categorical variables of "Mild or Moderate or Severe", "Survival or Death", "resolver or non-resolver", and "prone responder or prone non-responder". Hypoxaemia was categorised as per Berlin definition of ARDS². First week resolvers were defined by moving over the first week of mechanical ventilation to a less severe ARDS hypoxaemia category, and vice-versa for non-resolvers². We defined a positive prone responsiveness as a sustained increase in mean $\text{PaO}_2/\text{FiO}_2$ above 20kPa over 7 days, following the first PP episode. Analyses were carried out using Matlab (Mathworks Inc., Natick, MA).

Logistic regression models. Multivariate logistic regression models were applied (with screening univariate, $p < 0.1$) to each outcome variable to test associations with independent variables. The full list of variables tested for inclusion in these models is shown in Table S2, but only variables with less than 40% missingness were included in each outcome model (missing value analysis in the relevant time points is shown in Table S2). Variables that showed clinical overlap (e.g. SOFA renal and creatinine) had one variable excluded. A data driven approach to collinearity was not taken as many clinical variables associated with each other due to relationships with severity of illness. A full correlation matrix can be found in the supplementary figures. For all outcomes, only patients with more than 80% of the variables were included in the models. Accordingly, up to 20% of the data were missing and thus were imputed. Data were assumed to be missing at random (MAR) owing to the nature of different personnel at many different sites completing each data entry (the full missing value analysis, by site and by day, is shown in Tables S17 and S18). To enable interpretable and comparable odds ratios, all continuous variables were transformed to categorical by splitting them into quartiles. Accordingly, the odds ratio is the risk increase per quartile increase in the measurement. For age, the odds ratio is the risk increase per decade increase; for SOFA scores, the odds ratio is the risk increase per unit increase in the SOFA score; and for binary variables (e.g., gender, comorbidities) the odds ratio is the risk increase of being positive (e.g. being male, having comorbidity).

Statistical analysis of natural history and management. The association between the change over time of each independent variable and the outcome measures was tested in repeated measures (rm) ANOVA. For the survival and first week resolver outcome, rmANOVA was applied on the physiology

variables over the first week of mechanical ventilation, while for the prone responder outcome, it was applied on the physiology variables over a week from the day before the first PP episode. The rmANOVA was applied separately to each physiology variable, and for each variable, only patients with more than 80% of the variable's measurements over that week were included in the model. Variables for which fewer than 30 patients had more than 80% of the measurements were not analysed. To prevent the risk of too many false positive, we accounted for multiple comparisons in the interaction statistic by controlling the false discovery rate (FDR).

References.

- 1 Elm E von, Altman DG, Egger M, et al. The Strengthening the Reporting of Observational Studies in Epidemiology (STROBE) Statement: guidelines for reporting observational studies*. *B World Health Organ* 2007; 85: 867–72.
- 2 Acute Respiratory Distress Syndrome: The Berlin Definition. *Jama* 2012; 307: 2526–33.
- 3 Bellani G, Laffey JG, Pham T, et al. Epidemiology, Patterns of Care, and Mortality for Patients With Acute Respiratory Distress Syndrome in Intensive Care Units in 50 Countries. *Jama* 2016; 315: 788–800.

Table S1 - Individual site contributions

ICU site	Number of patients	Proportion of total	Outcome (Mortality rate)	percentage transferred in
A	2	0.3%	100.0%	0.0%
B	1	0.2%	0.0%	100.0%
C	18	2.8%	27.8%	5.6%
D	35	5.5%	31.4%	82.9%
E	49	7.7%	38.8%	79.6%
F	19	3.0%	26.3%	15.8%
G	36	5.7%	47.2%	44.4%
H	57	9.0%	59.6%	7.0%
I	34	5.4%	64.7%	0.0%
J	34	5.4%	29.4%	76.5%
K	3	0.5%	66.7%	0.0%
L	64	10.1%	51.6%	4.7%
M	54	8.5%	48.1%	3.7%
N	5	0.8%	80.0%	40.0%
O	9	1.4%	33.3%	77.8%
P	31	4.9%	35.5%	16.1%
Q	9	1.4%	88.9%	0.0%
R	173	27.3%	32.4%	12.1%
Total	633			

Table S2 - Variables included in logistic regression models

FieldLabel	% of Missingness		
	Admission	Before PP	After PP
Age	0%	0%	0%
Male	0%	0%	0%
BMI	17%	11%	11%
Height	23%	16%	16%
symptoms days	36%	33%	33%
Hypertension	0%	0%	0%
Diabetes mellitus	0%	0%	0%
Oxygen saturation	18%	14%	10%
pH	0%	6%	0%
PaCO ₂	0%	6%	0%
HCO ⁻³	1%	6%	0%
Lactate	5%	10%	6%
Peak pressure	5%	13%	5%
PEEP	5%	14%	7%
Minute ventilation	4%	14%	6%
Dynamic Comp	11%	21%	13%
Oxygenation Index	39%	50%	46%
Ventilatory Ratio	26%	27%	20%
Cum fluid balance	7%	14%	19%
Glucose	8%	11%	17%
BUN	21%	31%	33%
Sodium	2%	4%	2%
Potassium	2%	4%	3%
ALP	5%	6%	9%
ALT	6%	9%	13%
Creatinine Kinase	62%	56%	61%
LDH	69%	63%	67%
Haemoglobin	2%	4%	2%
Haematocrit	51%	37%	35%
Neutrophils	2%	4%	2%
Monocytes	3%	4%	3%
Lymphocytes	3%	4%	3%
Basophils	21%	14%	16%
Eosinophils	22%	15%	14%
APTT	37%	31%	37%
PT	37%	31%	36%
Fibrinogen	35%	33%	44%
Ferritin	54%	42%	51%
D-dimer	38%	40%	44%
Triglycerides	70%	69%	77%
CRP	6%	10%	11%
Procalcitonin	80%	77%	82%
High sensitivity Troponin	60%	56%	64%
NT Pro BNP	91%	93%	94%
SOFA Respiratory	1%	6%	0%
SOFA Nervous	20%	33%	27%
SOFA Cardio	9%	11%	9%
SOFA Liver	7%	15%	13%
SOFA Coagulation	2%	4%	2%
SOFA Kidneys	1%	3%	0%
SOFA score	32%	49%	41%
Prone initiation day	-	0%	0%

Table S3 - Distribution of co-morbidities with a) severity on admission and b) ICU outcome

Co-morbidity according to severity	ALL			MILD			MODERATE			SEVERE			P value
	Total N	n	%	Group N	n	%	Group N	n	%	Group N	n	%	
BMI>30 kg/m2	524	209	39.9	123	44	35.77	278	107	38.5	123	58	47.2	0.626
Myocardial infarction	573	17	3.0	129	6	4.65	292	7	2.4	152	4	2.6	0.485
Congestive Heart Failure	573	11	1.9	128	2	1.56	293	6	2.0	152	3	2.0	0.922
Peripheral vascular disease	574	9	1.6	129	1	0.78	293	6	2.0	152	2	1.3	0.577
CVA or TIA	574	17	3.0	129	4	3.10	293	9	3.1	152	4	2.6	0.966
Dementia	574	2	0.3	129	1	0.78	293	1	0.3	152	0	0.0	0.564
Hypertension	574	242	42.2	129	51	39.53	293	132	45.1	152	59	38.8	0.283
Pregnancy	366	1	0.3	71	0	0.00	183	1	0.5	112	0	0.0	0.613
COPD	575	41	7.1	129	10	7.75	294	24	8.2	152	7	4.6	0.372
Connective tissue disease	573	5	0.9	129	1	0.78	292	4	1.4	152	0	0.0	0.331
Peptic ulcer disease	573	8	1.4	129	1	0.78	293	5	1.7	151	2	1.3	0.728
Diabetes mellitus	574	176	30.7	129	46	35.66	293	93	31.7	152	37	24.3	0.161
Diabetes mellitus - end organ damage	569	18	3.2	127	5	3.94	291	10	3.4	151	3	2.0	0.637
Hemiplegia	365	2	0.5	70	1	1.43	183	1	0.5	112	0	0.0	0.564
Moderate to severe CKD	366	20	5.5	71	4	5.63	183	13	7.1	112	3	2.7	0.380
Solid tumour	575	24	4.2	129	7	5.43	294	10	3.4	152	7	4.6	0.653
Leukemia	366	8	2.2	71	1	1.41	183	7	3.8	112	0	0.0	0.095
Lymphoma	365	5	1.4	71	1	1.41	182	4	2.2	112	0	0.0	0.331
AIDS	574	5	0.9	129	3	2.33	293	2	0.7	152	0	0.0	0.113
Steroid use	365	14	3.8	71	3	4.23	182	10	5.5	112	1	0.9	0.198
Other Immunosuppression use	366	16	4.4	71	4	5.63	183	11	6.0	112	1	0.9	0.166
History of Deep Vein Thrombosis	363	7	1.9	70	4	5.71	181	2	1.1	112	1	0.9	0.102
History of Pulmonary Embolus	364	5	1.4	71	1	1.41	181	3	1.7	112	1	0.9	0.911

Co-morbidity according to outcome	Survivors			Non-Survivors			P value
	Group N	n	%	Group N	n	%	
BMI>30 kg/m2	314	134	42.68	210	75	35.71	0.021
Myocardial infarction	326	4	1.23	247	13	5.26	0.004
Congestive Heart Failure	326	2	0.61	247	9	3.64	0.008
Peripheral vascular disease	326	5	1.53	248	4	1.61	0.898
CVA or TIA	326	10	3.07	248	7	2.82	0.922
Dementia	326	1	0.31	248	1	0.40	0.826
Hypertension	326	129	39.57	248	113	45.56	0.081
Pregnancy	185	0	0.00	181	1	0.55	0.243
COPD	327	19	5.81	248	22	8.87	0.129
Connective tissue disease	326	1	0.31	247	4	1.62	0.087
Peptic ulcer disease	326	3	0.92	247	5	2.02	0.245
Diabetes mellitus	326	95	29.14	248	81	32.66	0.244
Diabetes mellitus - end organ damage	323	8	2.48	246	10	4.07	0.250
Hemiplegia	185	1	0.54	180	1	0.56	0.826
Moderate to severe CKD	185	8	4.32	181	12	6.63	0.104
Solid tumour	326	12	3.68	249	12	4.82	0.439
Leukemia	185	2	1.08	181	6	3.31	0.060
Lymphoma	185	1	0.54	180	4	2.22	0.087
AIDS	326	4	1.23	248	1	0.40	0.310
Steroid use	185	8	4.32	180	6	3.33	0.968
Other Immunosuppression use	185	7	3.78	181	9	4.97	0.254
History of Deep Vein Thrombosis	184	2	1.09	179	5	2.79	0.117
History of Pulmonary Embolus	184	2	1.09	180	3	1.67	0.422

Table S4 - Comparison between Covid-ICU and ICNARC

	Covid-19 undergoing IMV	
	COVID-ICU	ICNARC*
	N=633	N=7,702
Patient characteristics		
Age (years), median (IQR)	59.0 [51.0 66.0]	60 (51-67)
Sex, n (%)		
Male	481 (76%)	5,544 (72.0%)
Ethnicity, n (%)		
White	250 (39.5%)	4,653 (60.4%)
Asian	73 (11.5%)	1,256 (16.3%)
Black	115 (18.2%)	804 (10.4%)
Other	103 (16.3%)	693 (9.0%)
Not stated	91 (14.4%)	296 (3.8%)
BMI (kg/m ²), median (IQR)	28.1 [24.9 32.8]	28.3 (24.9-33.0)
BMI categories (kg/m ²), n (%)		
>30	209 (39.9%)	39.9%
Acute illness severity⁴		
P/F Ratio (kPa), ⁵ median (IQR)	18.3 [13.0 25.0]	15.0 (10.8-21.0)
P/F ratio categories (kPa) ⁵		
≤13.3kPa (≤100mmHg)	166 (26.2%)	3,033 (40.4%)
13.3-26.7kPa (100-200mmHg)	320 (50.6%)	3,530 (47.0%)
>26.7kPa (>200mmHg)	147 (23.2%)	952 (12.7%)
Organ support^{8,9}		
<i>Renal support</i>		
Receipt, n (%)	211 (33.3%)	2,708 (35.2%)
Duration (calendar days), median (IQR)	8.0 [4.0 14.0]	8 (4-15)
Outcome		
<i>Critical care</i>		
Survived, n (%)	365 (57.7%)	4,018 (52.2%)
Died, n (%)	268 (42.3%)	3,684 (47.8%)
Duration of stay (calendar days)		
IMV, median (IQR)	13.0 [7.0 22.0]	13 (7-23)
Survived – median (IQR)	15.0 [8.0 28.0]	-
Died – median (IQR)	11.0 [6.0 16.0]	-
Critical care, median (IQR)	14.0 [8.0 23.0]	15.0 (8.0-27.0)
Survived – median (IQR)	17.0 [9.8 30.0]	22.0 (12.0-36.0)
Died – median (IQR)	11.0 [7.0 18.0]	10.0 (6.0-17.0)

* Richards-Belle, A., Orzechowska, I., Gould, D., Thomas, K., Doidge, J., Mouncey, P., Christian, M., Shankar-Hari, M., Harrison, D., Rowan, K., Banjo, Y., Borowczak, K., Cousins, T., Cummins, P., Dalemo, K., Darnell, R., Demissie, H., Drikite, L., Fleming, A., Frederiksen, D., Furnell, S., Hussein, A., Koelewyn, A., Matthews, T., Peters, S., Samuels, T., Saull, M. (2020). COVID-19 in critical care: epidemiology of the first epidemic wave across England, Wales and Northern Ireland Intensive Care Medicine <https://dx.doi.org/10.1007/s00134->

Table S5 - The application, median start date and duration of the first episode of interventions

	Start day of first intervention	Duration of first intervention	Number of periods
interventions	median [IQR]	median [IQR]	median [IQR]
Neuro-muscular blockade	1.0 [0.0 3.0]	4.0 [1.0 7.0]	1.0 [1.0 2.0]
Prone positioning	2.0 [0.8 5.0]	2.0 [1.0 4.0]	1.0 [1.0 2.0]
Inhaled nitric oxide	6.0 [3.0 9.0]	4.0 [2.0 7.3]	1.0 [1.0 1.0]
Inhaled prostacyclin	7.0 [3.0 15.0]	3.0 [1.0 6.8]	1.0 [1.0 1.0]
Tracheostomy	14.0 [9.0 18.0]	13.0 [6.0 20.0]	1.0 [1.0 1.0]
APRV	3.0 [0.5 6.0]	3.0 [2.0 5.0]	1.0 [1.0 1.0]
Bronchoscopy	9.0 [3.0 15.8]	1.0 [1.0 1.0]	1.0 [1.0 1.0]
Renal replacement therapy	3.0 [1.0 6.0]	5.0 [3.0 11.0]	1.0 [1.0 2.0]
Diuretics	1.0 [1.0 3.0]	3.0 [1.0 5.0]	2.0 [1.0 3.0]
Corticosteroids	5.0 [1.0 10.0]	4.0 [2.0 9.0]	1.0 [1.0 2.0]
Therapeutic heparin	9.0 [6.0 14.0]	5.0 [2.0 8.8]	1.0 [1.0 1.0]
Anti-Bacterial	0.0 [0.0 0.0]	6.0 [4.0 9.0]	1.0 [1.0 2.0]

Table S6 - Clinical and physiological characteristics, outcomes and interventions according to resolution of hypoxaemia over first week of invasive mechanical ventilation.

Clinical Characteristics		ALL		Trajectory between admission and day7				
label	units	Total N	median [IQR] / N (%)	Group N	median [IQR] / N (%)	Group N	median [IQR] / N (%)	P Value
Male		633	481 (76%)	267	196 (73.4%)	366	285 (77.9%)	0.194
White		542	250 (46.1%)	216	98 (45.4%)	326	152 (46.6%)	0.220
Age	years	633	59.0 [51.0 66.0]	267	57.0 [47.0 64.0]	366	60.0 [54.0 67.0]	0.000
BMI	kg/m ²	524	28.1 [24.9 32.8]	222	28.0 [24.8 32.9]	302	28.2 [25.1 32.3]	0.666
Time since onset of symptoms	days	408	8.0 [6.0 12.0]	164	9.0 [6.5 13.5]	244	7.0 [6.0 11.0]	0.004
ICU length of stay	days	633	14.0 [8.0 23.0]	267	13.0 [7.3 20.0]	366	15.0 [8.0 25.0]	0.025
Length of mechanical ventilation	days	633	13.0 [7.0 22.0]	267	12.0 [6.0 18.8]	366	14.0 [8.0 24.0]	0.003
ICU Mortality	%	633	268 (42.3%)	267	47 (17.6%)	366	221 (60.4%)	0.000
Vent								
FiO ₂ (%)		628	60.0 [45.0 80.0]	263	60.0 [40.0 80.0]	365	60.0 [50.0 72.8]	0.269
PaO ₂ to FiO ₂ ratio		626	18.3 [13.0 25.0]	262	17.9 [11.7 27.5]	364	18.4 [14.6 24.1]	0.323
Tidal Volume (mls/BW)	ml/kg(BW)	472	6.8 [6.0 7.8]	202	6.9 [6.1 7.8]	270	6.8 [6.0 7.7]	0.373
Respiratory rate	bpm	627	18.8 [16.0 22.0]	263	18.0 [16.0 22.0]	364	19.2 [16.0 22.4]	0.249
Minute ventilation	l/minute	606	8.5 [6.9 10.4]	255	8.5 [7.0 10.2]	351	8.5 [6.9 10.5]	0.500
Peak pressure	ml/kg(RBW)	599	26.0 [23.0 30.0]	253	25.0 [22.0 29.0]	346	26.7 [24.0 30.0]	0.005
Plateau pressure		80	26.0 [22.5 28.5]	28	24.5 [21.5 29.0]	52	26.0 [23.0 28.0]	0.438
PEEP	cmH ₂ O	603	10.0 [8.0 12.0]	257	10.0 [8.0 12.0]	346	10.0 [8.5 12.0]	0.008
Mean airway pressure	cmH ₂ O	387	16.0 [13.2 19.0]	174	15.8 [13.0 18.0]	213	16.0 [14.0 20.0]	0.037
Pressure support	cmH ₂ O	371	10.0 [5.3 14.0]	160	10.0 [5.0 12.5]	211	10.0 [6.3 14.0]	0.651
Dynamic Compliance	mls/cmH2O	564	31.5 [24.3 40.2]	242	32.5 [25.2 40.9]	322	30.3 [24.0 40.1]	0.253
Oxygenation Index		387	8.1 [5.1 12.5]	174	7.7 [4.6 13.0]	213	8.2 [5.3 11.6]	0.600
Ventilatory Ratio		470	1.5 [1.2 2.1]	200	1.4 [1.2 2.0]	270	1.6 [1.3 2.1]	0.250
ABG								
Oxygen saturation		518	95.0 [93.0 98.0]	224	96.0 [93.0 98.0]	294	95.0 [92.0 97.0]	0.060
pH		630	7.4 [7.3 7.4]	265	7.4 [7.3 7.4]	365	7.4 [7.3 7.4]	0.058
PaO ₂	kPa	630	10.7 [9.2 13.1]	265	10.4 [8.8 12.4]	365	10.9 [9.4 13.4]	0.019
PaCO ₂	kPa	630	6.0 [5.2 7.2]	265	6.0 [5.2 7.2]	365	6.0 [5.2 7.1]	0.959
Base excess		630	-0.3 [-2.6 2.2]	265	0.3 [-1.9 2.5]	365	-0.7 [-3.0 1.8]	0.001
HCO ₃	mmol/L	629	24.5 [22.5 26.7]	265	24.9 [23.0 27.2]	364	24.0 [22.0 26.4]	0.001
Lactate	mmol/L	604	1.2 [1.0 1.6]	260	1.2 [1.0 1.6]	344	1.3 [1.0 1.6]	0.045
SOFA								
SOFA score		428	9.0 [7.0 11.0]	184	9.0 [7.0 11.0]	244	9.0 [7.0 11.0]	0.780
SOFA Respiratory		626	3.0 [3.0 4.0]	262	3.0 [2.0 4.0]	364	3.0 [3.0 3.0]	0.042
SOFA Nervous		508	3.0 [0.0 4.0]	218	2.0 [0.0 4.0]	290	4.0 [0.0 4.0]	0.663
SOFA Cardiovascular		579	3.0 [3.0 4.0]	242	3.0 [1.0 4.0]	337	3.0 [3.0 4.0]	0.004
SOFA Liver		588	0.0 [0.0 0.0]	252	0.0 [0.0 0.0]	336	0.0 [0.0 0.0]	0.971
SOFA Coagulation		619	0.0 [0.0 0.0]	257	0.0 [0.0 0.0]	362	0.0 [0.0 0.0]	0.281
SOFA Kidneys		629	0.0 [0.0 1.0]	264	0.0 [0.0 1.0]	365	0.0 [0.0 1.0]	0.453
FBC								
Haemoglobin	g/dL	619	114.0 [92.0 128.0]	257	113.0 [90.0 126.0]	362	115.0 [94.0 130.0]	0.164
Haematocrit		312	0.4 [0.3 0.4]	126	0.4 [0.3 0.4]	186	0.4 [0.3 0.4]	0.049
White blood cell count	x10 ⁹ /L	619	9.6 [7.0 13.1]	257	9.6 [6.9 12.7]	362	9.6 [7.1 13.5]	0.818
Neutrophils	x10 ⁹ /L	618	8.1 [5.7 11.3]	257	7.9 [5.4 11.1]	361	8.3 [5.8 11.5]	0.514
Monocytes	x10 ⁹ /L	614	0.4 [0.3 0.7]	256	0.5 [0.3 0.7]	358	0.4 [0.3 0.7]	0.084
Lymphocytes	x10 ⁹ /L	615	0.8 [0.5 1.2]	257	0.8 [0.6 1.3]	358	0.8 [0.5 1.1]	0.048
Basophils	x10 ⁹ /L	498	0.0 [0.0 0.1]	201	0.0 [0.0 0.1]	297	0.0 [0.0 0.1]	0.251
Eosinophils	x10 ⁹ /L	493	0.0 [0.0 0.1]	205	0.0 [0.0 0.1]	288	0.0 [0.0 0.1]	0.003
Coag								
Platelet Count	μmol/L	619	246.0 [185.3 320.8]	257	245.0 [191.0 325.0]	362	246.0 [182.0 318.0]	0.372
APTT	U/L	398	32.1 [28.3 37.4]	162	32.3 [28.3 38.0]	236	32.1 [28.3 36.5]	0.633
PT	U/L	396	13.9 [12.4 15.2]	162	13.6 [12.1 15.1]	234	14.0 [12.7 15.4]	0.297
INR	U/L	212	1.1 [1.1 1.2]	98	1.1 [1.1 1.2]	114	1.1 [1.0 1.2]	0.381
Fibrinogen	U/L	410	6.8 [5.6 8.1]	179	6.6 [5.7 7.7]	231	6.9 [5.6 8.3]	0.280
D-dimer	IU/L	391	2642.0 [990.5 7701.3]	177	2920.0 [977.5 8104.8]	214	2418.0 [1060.0 7530.0]	0.946
Electrolytes								
Blood Urea Nitrogen (BUN)	mmol/L	498	7.4 [4.9 11.8]	200	6.8 [4.5 10.8]	298	7.8 [5.4 12.1]	0.009
Creatinine	μmol/L	621	88.0 [66.0 140.0]	258	84.0 [64.0 129.0]	363	90.0 [67.0 148.0]	0.050
Sodium	mmol/L	621	139.0 [136.0 142.0]	259	139.0 [137.0 142.0]	362	138.0 [135.0 141.0]	0.003
Potassium	mmol/L	620	4.4 [4.0 4.8]	258	4.4 [4.0 4.8]	362	4.4 [4.0 4.8]	0.480
Liver								
Bilirubin	μmol/L	588	10.0 [7.0 15.0]	252	10.0 [7.0 14.0]	336	10.0 [7.0 15.0]	0.143
Alkaline Phosphatase	U/L	600	77.0 [58.5 113.0]	255	79.0 [58.3 120.8]	345	75.0 [58.8 107.3]	0.279
AST	U/L	99	59.0 [39.3 85.0]	43	56.0 [34.8 69.5]	56	62.0 [41.5 90.5]	0.128
ALT	U/L	592	37.0 [24.0 59.0]	252	36.0 [23.0 59.5]	340	37.0 [24.0 59.0]	0.649
Inflammation								
LDH (Lactate dehydrogenase)	U/L	194	649.0 [452.0 921.0]	82	678.0 [443.0 1032.0]	112	615.5 [459.5 873.0]	0.224
Ferritin	ng/mL	290	1218.5 [696.0 2320.0]	129	1023.0 [665.8 2080.3]	161	1374.0 [780.5 2492.3]	0.031
CRP		592	215.7 [135.0 311.0]	255	208.0 [119.3 308.9]	337	218.0 [145.0 312.3]	0.189
Procalcitonin	ug/L	125	0.7 [0.3 2.2]	61	0.6 [0.3 2.2]	64	0.8 [0.3 2.1]	0.456
Cardiac								
Creatinine Kinase	U/L	243	217.0 [83.5 637.3]	108	194.5 [79.0 563.0]	135	226.0 [95.8 664.8]	0.219
High sensitivity Troponin		253	21.8 [11.0 61.0]	116	17.5 [9.0 48.3]	137	25.7 [12.0 62.0]	0.079
NT Pro BNP	pg/ml	58	537.5 [165.0 1478.0]	28	454.0 [196.5 1498.5]	30	611.0 [161.0 1478.0]	0.834
Fluid								
Cumulative Fluid balance	L	589	343.0 [-212.3 1058.3]	256	287.0 [-244.5 991.8]	333	361.0 [-201.1 1160.3]	0.412
Adjunctive interventions								
Was patient transferred in?		633	159 (25.1%)	267	79 (29.6%)	366	80 (21.9%)	0.027
Tracheostomy		516	145 (28.1%)	220	59 (26.8%)	296	86 (29.1%)	0.679
PEEP>10		622	459 (73.8%)	262	159 (60.7%)	360	300 (83.3%)	0.000
Neuro-muscular blockade		617	434 (70.3%)	256	152 (59.4%)	361	282 (78.1%)	0.000
Proning		551	273 (49.5%)	234	90 (38.5%)	317	183 (57.7%)	0.000
Inhaled nitric oxide		521	73 (14%)	224	21 (9.38%)	297	52 (17.5%)	0.014
Inhaled prostacyclin		521	55 (10.6%)	224	18 (8.04%)	297	37 (12.5%)	0.137
Bronchoscopy		521	51 (9.79%)	224	20 (8.93%)	297	31 (10.4%)	0.655
Renal replacement therapy		555	211 (38%)	238	75 (31.5%)	317	136 (42.9%)	0.017
Diuretics		598	443 (74.1%)	247	171 (69.2%)	351	272 (77.5%)	0.005
Corticosteroids		582	304 (52.2%)	247	115 (46.6%)	335	189 (56.4%)	0.033
Therapeutic heparin		438	55 (12.6%)	176	18 (10.2%)	262	37 (14.1%)	0.137
Antibiotics		313	219 (70%)	127	74 (58.3%)	186	145 (78%)	0.002
Proning								
No of proning episodes		273	1.0 [1.0 2.0]	90	1.0 [1.0 2.0]	183	1.0 [1.0 2.0]	0.941
mech vent prior to first prone	days	273	3.0 [1.8 6.0]	90	2.0 [1.0 5.0]	183	4.0 [2.0 7.0]	0.007
duration of first prone	days	273	2.0 [1.0 4.0]	90	2.0 [1.0 4.0]	183	2.0 [1.0 4.0]	0.943
responders to proning		270	119 (44.1%)	88	53 (60.2%)	182	66 (36.3%)	0.563
missed windows prior to prone		273	3.0 [1.0 6.0]	90	2.0 [1.0 5.0]	183	3.0 [1.0 7.0]	0.026
missed windows - unproned		360	3.0 [1.0 10.0]	177	1.0 [0.0 4.0]	183	6.0 [3.0 13.0]	0.000
Tracheostomy								
mech vent prior to tracheostomy	days	145	13.0 [9.0 18.0]	59	13.0 [7.0 16.0]	86	15.0 [10.0 19.0]	0.015
duration of tracheostomy	days	145	14.0 [6.0 21.3]	59	11.0 [4.3 22.0]	86	15.0 [8.0 21.0]	0.078
End of life parameters								
life sustaining therapy withdrawn		130	85 (65.4%)	19	12 (63.2%)	111	73 (65.8%)	0.000
cardiac arrest during admission		244	21 (8.61%)	85	4 (4.71%)	159	17 (10.7%)	0.029

Table S7 - Time series mixed model ANOVA according to resolution of hypoxaemia over first week of mechanical ventilation.

label	N	p-values			
		Resolvers vs Non-Resolvers	parameter over time	interaction	FDR interaction
PaO ₂ / FiO ₂	472	0.000	0.000	0.000	0.000
Dynamic Compliance	341	0.408	0.039	0.226	0.379
Respiratory rate	458	0.556	0.000	0.678	0.721
FiO ₂ (%)	503	0.000	0.000	0.000	0.000
Tidal Volume per Kg	347	0.782	0.411	0.624	0.711
Tidal Volume	433	0.193	0.612	0.654	0.721
Minute ventilation	404	0.292	0.000	0.516	0.626
Peak pressure	426	0.002	0.000	0.001	0.003
PEEP	390	0.001	0.000	0.001	0.003
Dynamic delta pressure (peakP-peep)	124	0.559	0.813	0.197	0.341
Mean airway pressure	256	0.004	0.000	0.000	0.000
I:E ratio	93	0.280	0.487	0.458	0.567
Pressure support	169	0.110	0.032	0.076	0.166
Oxygen saturation	417	0.000	0.175	0.001	0.004
pH	487	0.001	0.000	0.001	0.005
PaO ₂	484	0.008	0.033	0.000	0.001
PaCO ₂	487	0.035	0.003	0.000	0.000
Base excess	478	0.048	0.000	0.063	0.149
HCO ⁻³	479	0.106	0.000	0.005	0.014
Lactate	451	0.001	0.310	0.026	0.069
Oxygenation Index	237	0.000	0.000	0.000	0.000
Ventilatory Ratio	314	0.301	0.026	0.103	0.195
Mean arterial pressure (lowest)	386	0.003	0.000	0.001	0.005
Liver-Bilirubin	167	0.262	0.040	0.158	0.285
Daily fluid balance	480	0.001	0.000	0.081	0.172
Cumulative fluid balance	480	0.015	0.074	0.001	0.005
SOFA Score	192	0.157	0.000	0.000	0.000
Non-Respiratory SOFA	224	0.349	0.000	0.001	0.004
Glucose	465	0.963	0.012	0.056	0.138
BUN	382	0.002	0.010	0.004	0.012
Creatinine	520	0.042	0.096	0.000	0.001
Sodium	523	0.796	0.008	0.258	0.421
Potassium	518	0.010	0.167	0.160	0.285
Bilirubin	401	0.284	0.000	0.002	0.007
Alkaline Phosphatase	441	0.171	0.000	0.706	0.721
AST	55	0.914	0.743	0.279	0.430
ALT	418	0.226	0.000	0.098	0.195
Creatinine Kinase	127	0.921	0.174	0.580	0.674
LDH	66	0.182	0.046	0.397	0.539
Haemoglobin	515	0.787	0.285	0.076	0.166
WBC	513	0.516	0.043	0.269	0.426
RBC	415	0.857	0.840	0.709	0.721
Platelet Count	511	0.048	0.000	0.099	0.195
Haematocrit	252	0.866	0.000	0.026	0.069
Neutrophils	511	0.994	0.442	0.309	0.452
Monocytes	509	0.005	0.000	0.303	0.452
Lymphocytes	509	0.124	0.000	0.026	0.069
Basophils	361	0.138	0.162	0.683	0.721
Eosinophils	386	0.001	0.000	0.564	0.670
APTT	255	0.236	0.660	0.326	0.465
PT	260	0.912	0.456	0.431	0.558
INR	163	0.815	0.175	0.440	0.558
Fibrinogen	137	0.063	0.062	0.690	0.721
Ferritin	75	0.201	0.472	0.404	0.539
D-dimer	147	0.967	0.388	0.406	0.539
CRP	457	0.001	0.000	0.000	0.000
High sensitivity Troponin	62	0.704	0.596	0.790	0.790

Table S8 - Uni- and multi-variate model analysis of factors associated with progression of hypoxaemia over the first week of invasive mechanical ventilation

FieldLabel	median [IQR]	Univariate				Multivariate			
		Odds ratio	95% CI		P Value	Odds ratio	95% CI		P Value
Age		1.366	1.186	1.572	0.000	1.236	1.060	1.441	0.007
Male		1.314	0.882	1.959	0.179				
BMI	28.13 [24.90 32.76]	0.903	0.770	1.059	0.210				
Height	173.00 [165.00 178.00]	0.942	0.799	1.110	0.473				
symptoms days	8.00 [6.00 12.00]	0.857	0.724	1.013	0.071	0.940	0.784	1.127	0.503
Hypertension		1.233	0.869	1.749	0.240				
Diabetes mellitus		1.549	1.047	2.293	0.029	1.381	0.886	2.153	0.155
Oxygen saturation	95.00 [93.00 98.00]	0.864	0.735	1.016	0.077	0.998	0.834	1.194	0.981
pH	7.36 [7.30 7.42]	0.919	0.789	1.070	0.274				
PaCO ₂	5.96 [5.16 7.15]	0.964	0.827	1.123	0.635				
HCO ₃ ⁻	24.50 [22.48 26.70]	0.784	0.671	0.915	0.002	0.870	0.733	1.032	0.111
Lactate	1.20 [1.00 1.60]	1.197	1.024	1.398	0.024	1.030	0.862	1.231	0.748
Peak pressure	26.00 [23.00 30.00]	1.158	0.992	1.351	0.062	1.158	0.967	1.385	0.110
PEEP	10.00 [8.00 12.00]	1.268	1.067	1.508	0.007	1.109	0.902	1.363	0.328
Minute ventilation	8.53 [6.88 10.44]	0.968	0.831	1.127	0.674				
Dynamic Comp	31.47 [24.26 40.19]	0.898	0.768	1.050	0.178				
Oxygenation Index	8.10 [5.09 12.45]	1.020	0.866	1.201	0.812				
Ventilatory Ratio	1.54 [1.22 2.07]	1.088	0.929	1.274	0.295				
Cum fluid balance	343.00 [-212.25 1058.32]	1.104	0.947	1.287	0.207				
Glucose	8.39 [6.79 10.95]	1.163	0.995	1.359	0.058	1.026	0.854	1.232	0.786
BUN	7.40 [4.90 11.80]	1.237	1.057	1.449	0.008	1.183	0.983	1.422	0.075
Sodium	139.00 [136.00 142.00]	0.793	0.678	0.926	0.004	0.818	0.686	0.974	0.024
Potassium	4.40 [4.00 4.80]	1.064	0.912	1.241	0.430				
ALP	77.00 [58.50 113.00]	0.941	0.809	1.094	0.429				
ALT	37.00 [24.00 59.00]	1.050	0.902	1.223	0.526				
Haemoglobin	114.00 [92.00 128.00]	1.116	0.960	1.296	0.152				
Neutrophils	8.10 [5.71 11.30]	1.090	0.935	1.270	0.271				
Monocytes	0.41 [0.30 0.70]	0.844	0.725	0.982	0.028	0.921	0.767	1.106	0.376
Lymphocytes	0.80 [0.50 1.20]	0.848	0.721	0.998	0.047	0.976	0.806	1.181	0.800
Basophils	0.00 [0.00 0.10]	0.811	0.544	1.208	0.302				
Eosinophils	0.00 [0.00 0.10]	0.503	0.353	0.717	0.000	0.648	0.430	0.976	0.038
APTT	32.10 [28.30 37.40]	0.926	0.781	1.098	0.376				
PT	13.85 [12.40 15.20]	1.065	0.903	1.256	0.456				
Fibrinogen	6.80 [5.60 8.10]	1.052	0.891	1.242	0.552				
D-dimer	2642.00 [990.50 7701.25]	0.964	0.818	1.134	0.655				
CRP	215.65 [135.00 311.00]	1.109	0.950	1.294	0.192				
SOFA Respiratory		0.929	0.769	1.123	0.447				
SOFA Nervous		1.028	0.942	1.121	0.541				
SOFA Cardio		1.241	1.068	1.442	0.005	1.197	1.011	1.418	0.037
SOFA Liver		0.983	0.715	1.350	0.915				
SOFA Coagulation		1.207	0.865	1.683	0.267				
SOFA Kidneys		1.059	0.901	1.245	0.484				
SOFA score		1.036	0.968	1.109	0.301				

* NonResolvers (N=318) vs Resolvers (N=231)

Table S9 - Clinical and physiological characteristics, outcomes and interventions according to prone responsiveness.

Clinical Characteristics		ALL		Prone responsiveness			P Value
label	units	Total N	median [IQR] / N (%)	Group N	median [IQR] / N (%)	Group N	median [IQR] / N (%)
Male		270	203 (75.2%)	119	93 (78.2%)	151	110 (72.8%)
White		219	115 (52.5%)	90	43 (47.8%)	129	72 (55.8%)
Age	years	270	60.0 [54.0 66.0]	119	58.0 [50.0 64.0]	151	60.0 [56.3 66.0]
BMI	kg/m2	239	29.0 [25.3 33.2]	107	29.4 [26.2 33.2]	132	28.0 [24.8 33.2]
Time since onset of symptoms	days	181	7.0 [6.0 11.0]	75	8.0 [6.0 12.8]	106	7.0 [6.0 11.0]
ICU length of stay	days	270	18.0 [11.0 29.0]	119	19.0 [12.3 30.8]	151	16.0 [10.0 26.0]
Length of mechanical ventilation	days	270	16.0 [10.0 26.0]	119	18.0 [11.0 28.5]	151	15.0 [10.0 23.8]
ICU Mortality	%	270	142 (52.6%)	119	37 (31.1%)	151	105 (69.5%)
Vent							
FiO ₂ (%)		269	65.0 [50.0 80.0]	119	60.0 [50.0 80.0]	150	70.0 [60.0 80.0]
PaO ₂ to FiO ₂ ratio		269	16.4 [12.1 21.9]	119	17.9 [13.5 23.3]	150	15.0 [11.4 19.6]
Tidal Volume (mls/BW)	ml/Kg(BW)	220	6.8 [6.1 7.8]	99	6.8 [6.2 7.9]	121	6.8 [6.0 7.7]
Respiratory rate	bpm	268	20.0 [16.0 24.0]	118	20.0 [18.0 24.0]	150	18.0 [16.0 22.0]
Minute ventilation	L/minute	256	8.7 [6.9 10.4]	115	9.1 [7.7 10.6]	141	8.5 [6.7 10.1]
Peak pressure	ml/Kg(RBW)	256	27.0 [24.0 30.0]	117	27.0 [24.0 29.0]	139	28.0 [25.0 30.8]
Plateau pressure	ml/Kg(BW)	48	28.0 [24.0 29.0]	20	26.5 [22.0 29.5]	28	28.0 [25.5 28.5]
PEEP	cmH ₂ O	259	10.0 [10.0 12.0]	116	10.0 [10.0 12.0]	143	10.8 [10.0 14.0]
Mean airway pressure	cmH ₂ O	143	17.0 [14.3 19.0]	73	17.0 [15.0 18.0]	70	16.5 [14.0 21.0]
Pressure support	cmH ₂ O	150	10.0 [8.0 14.0]	60	10.0 [7.0 15.0]	90	10.0 [8.0 14.0]
Dynamic Compliance	mls/cmH2O	237	30.0 [24.0 38.1]	109	31.0 [23.5 39.9]	128	29.4 [24.4 36.6]
Oxygenation Index		143	9.3 [6.4 13.6]	73	8.7 [5.9 11.1]	70	11.0 [6.9 16.2]
Ventilatory Ratio		219	1.7 [1.4 2.2]	98	1.8 [1.4 2.2]	121	1.7 [1.2 2.3]
ABG							
Oxygen saturation		242	94.5 [92.0 97.0]	113	95.0 [92.0 97.0]	129	94.0 [92.0 96.0]
pH		270	7.3 [7.3 7.4]	119	7.3 [7.3 7.4]	151	7.4 [7.3 7.4]
PaO ₂	kPa	270	10.6 [9.0 12.4]	119	10.5 [9.2 12.6]	151	10.6 [8.8 12.3]
PaCO ₂	kPa	270	6.2 [5.3 7.4]	119	6.2 [5.3 7.3]	151	6.4 [5.4 7.4]
Base excess		270	0.2 [-2.6 2.7]	119	0.2 [-2.4 2.3]	151	0.2 [-2.6 3.2]
HCO ₃	mmol/L	269	24.4 [22.4 27.0]	118	24.6 [22.4 26.7]	151	24.2 [22.4 27.1]
Lactate	mmol/L	256	1.2 [1.0 1.6]	110	1.1 [0.9 1.5]	146	1.3 [1.1 1.7]
SOFA							
SOFA score		174	9.0 [7.0 11.0]	75	8.0 [7.0 10.0]	99	9.0 [7.3 11.0]
SOFA Respiratory		269	3.0 [3.0 4.0]	119	3.0 [3.0 3.0]	150	3.0 [3.0 4.0]
SOFA Nervous		205	4.0 [0.0 4.0]	88	4.0 [0.0 4.0]	117	4.0 [0.0 4.0]
SOFA Cardiovascular		248	3.0 [1.0 4.0]	110	3.0 [1.0 3.0]	138	3.0 [3.0 4.0]
SOFA Liver		252	0.0 [0.0 0.0]	110	0.0 [0.0 0.0]	142	0.0 [0.0 0.0]
SOFA Coagulation		267	0.0 [0.0 0.0]	116	0.0 [0.0 0.0]	151	0.0 [0.0 0.0]
SOFA Kidneys		269	0.0 [0.0 1.0]	118	0.0 [0.0 1.0]	151	0.0 [0.0 1.0]
FBC							
Haemoglobin	g/dL	267	116.0 [91.3 128.0]	116	115.5 [95.0 127.8]	151	117.0 [88.3 129.0]
Haematocrit		178	0.4 [0.3 0.4]	86	0.4 [0.3 0.4]	92	0.4 [0.3 0.4]
White blood cell count	x10 ⁹ /L	267	9.7 [7.3 12.8]	116	9.6 [7.1 12.6]	151	9.8 [7.5 12.9]
Neutrophils	x10 ⁹ /L	267	8.3 [6.1 11.3]	116	8.1 [5.6 11.1]	151	8.3 [6.5 11.7]
Monocytes	x10 ⁹ /L	264	0.4 [0.3 0.6]	115	0.4 [0.3 0.6]	149	0.4 [0.3 0.6]
Lymphocytes	x10 ⁹ /L	265	0.7 [0.5 1.1]	115	0.8 [0.5 1.2]	150	0.7 [0.5 1.1]
Basophils	x10 ⁹ /L	223	0.0 [0.0 0.1]	100	0.0 [0.0 0.1]	123	0.0 [0.0 0.0]
Eosinophils	x10 ⁹ /L	220	0.0 [0.0 0.1]	101	0.0 [0.0 0.1]	119	0.0 [0.0 0.1]
Coag							
Platelet Count	µmol/L	267	247.0 [190.3 331.0]	116	247.5 [196.0 329.5]	151	247.0 [190.0 333.5]
APTT	U/L	193	31.7 [28.0 35.3]	86	31.8 [28.0 35.6]	107	31.4 [27.8 34.9]
PT	U/L	192	13.6 [12.1 14.9]	86	13.3 [12.1 14.7]	106	13.8 [12.1 15.4]
INR	U/L	127	1.1 [1.1 1.2]	66	1.1 [1.1 1.2]	61	1.1 [1.1 1.2]
Fibrinogen	U/L	188	6.9 [5.7 8.2]	93	6.9 [5.6 8.0]	95	7.1 [5.9 8.3]
D-dimer	µU/L	171	2540.0 [947.0 6208.5]	73	1694.0 [880.0 3895.0]	98	3213.5 [1385.0 8329.0]
Electrolytes							
Blood Urea Nitrogen (BUN)	mmol/L	189	7.0 [5.0 11.0]	67	6.6 [5.0 9.9]	122	7.6 [5.1 11.9]
Creatinine	µmol/L	267	84.0 [63.0 125.8]	117	85.0 [65.8 133.3]	150	82.0 [63.0 118.0]
Sodium	mmol/L	268	138.0 [136.0 141.0]	118	138.0 [135.0 140.0]	150	139.0 [136.0 143.0]
Potassium	mmol/L	268	4.4 [4.1 4.7]	118	4.5 [4.2 4.8]	150	4.4 [4.0 4.7]
Liver							
Bilirubin	µmol/L	252	10.0 [7.0 15.0]	110	10.0 [7.0 15.0]	142	10.0 [8.0 15.0]
Alkaline Phosphatase	U/L	257	76.0 [56.8 109.0]	113	76.0 [53.0 110.0]	144	75.5 [60.5 108.0]
AST	U/L	52	61.0 [41.0 80.5]	22	59.0 [42.0 91.0]	30	61.5 [40.0 79.0]
ALT	U/L	253	37.0 [26.0 56.3]	111	37.0 [26.3 57.8]	142	36.5 [25.0 56.0]
Inflammation							
LDH (Lactate dehydrogenase)	U/L	110	712.5 [520.0 1004.0]	55	783.0 [532.0 1141.8]	55	677.0 [514.0 968.3]
Ferritin	ng/mL	149	1297.0 [711.8 2520.0]	68	1038.0 [629.5 2215.0]	81	1410.0 [773.3 2776.8]
CRP		252	235.0 [158.6 322.6]	117	229.8 [155.5 323.3]	135	239.3 [160.0 321.7]
Procalcitonin	ug/L	47	0.9 [0.4 2.4]	19	0.6 [0.3 2.3]	28	1.2 [0.6 2.9]
Cardiac							
Creatinine Kinase	U/L	122	248.5 [122.0 638.0]	61	373.0 [187.1 847.3]	61	155.0 [92.8 515.8]
High sensitivity Troponin		132	21.9 [11.8 57.5]	65	15.0 [8.8 50.8]	67	25.0 [14.4 61.8]
NT Pro BNP	pg/ml	26	621.0 [173.0 1983.0]	10	313.5 [165.0 680.0]	16	810.5 [502.0 2587.0]
Fluid							
Cumulative Fluid balance	L	251	384.0 [-196.6 1160.0]	109	143.0 [-272.3 753.8]	142	622.0 [-114.0 1363.0]
Adjunctive interventions							
Was patient transferred in?		270	87 (32.2%)	119	48 (40.3%)	151	39 (25.8%)
Tracheostomy		243	77 (31.7%)	113	41 (36.3%)	130	36 (27.7%)
PEEP>10		268	239 (89.2%)	119	102 (85.7%)	149	137 (91.9%)
Neuro-muscular blockade		269	246 (91.4%)	118	107 (90.7%)	151	139 (92.1%)
Prone positioning		270	270 (100%)	119	119 (100%)	151	151 (100%)
Inhaled nitric oxide		243	66 (27.2%)	113	20 (17.7%)	130	46 (35.4%)
Inhaled prostacyclin		243	35 (14.4%)	113	9 (7.96%)	130	26 (20%)
Bronchoscopy		243	34 (14%)	113	18 (15.9%)	130	16 (12.3%)
Renal replacement therapy		250	112 (44.8%)	115	48 (41.7%)	135	64 (47.4%)
Diuretics		268	210 (78.4%)	118	90 (76.3%)	150	120 (80%)
Corticosteroids		264	154 (58.3%)	118	65 (55.1%)	146	89 (61%)
Therapeutic heparin		187	33 (17.6%)	75	14 (18.7%)	112	19 (17%)
Antibiotics		179	119 (66.5%)	87	46 (52.9%)	92	73 (79.3%)
Prone							
No of proning episodes		270	1.0 [1.0 2.0]	119	1.0 [1.0 2.0]	151	1.0 [1.0 2.0]
mech vent prior first prone	days	270	3.0 [1.0 6.0]	119	3.0 [2.0 5.8]	151	3.0 [1.0 7.0]
duration of first prone	days	270	2.0 [1.0 4.0]	119	2.0 [1.0 4.0]	151	2.0 [1.0 4.0]
responders to proning		270	119 (44.1%)	119	119 (100%)	151	0 (0%)
missed windows prior to prone		270	3.0 [1.0 6.0]	119	2.0 [1.0 5.0]	151	3.0 [1.0 7.0]
		0	NaN [NaN NaN]	0	NaN [NaN NaN]	0	NaN [NaN NaN]
Tracheostomy							
mech vent prior to tracheostomy	days	77	16.0 [11.0 20.0]	41	16.0 [12.0 19.3]	36	14.5 [8.5 20.0]
duration of tracheostomy	days	77	14.0 [6.0 21.3]	41	15.0 [7.8 22.0]	36	11.5 [4.0 20.0]
End of life parameters							
life sustaining therapy withdrawn		90	61 (67.8%)	31	22 (71%)	59	39 (66.1%)
cardiac arrest during admission		139	13 (9.35%)	58	7 (12.1%)	81	6 (7.41%)

Table S10 - Time series mixed model ANOVA according to prone responsiveness.

label	N	p-values			
		Prone Responders vs non-Responders	parameter over time	interaction	FDR interaction
PaO ₂ / FiO ₂	234	0.000	0.000	0.000	0.000
Dynamic Compliance	171	0.813	0.819	0.817	0.872
Respiratory rate	219	0.993	0.645	0.143	0.590
FiO ₂ (%)	239	0.000	0.000	0.000	0.001
Tidal Volume per Kg	186	0.477	0.779	0.867	0.883
Tidal Volume	216	0.186	0.659	0.799	0.872
Minute ventilation	197	0.803	0.449	0.368	0.619
Peak pressure	212	0.002	0.649	0.333	0.619
PEEP	197	0.699	0.929	0.826	0.872
Dynamic delta pressure (peakP-peep)	78	0.014	0.487	0.929	0.929
Mean airway pressure	117	0.670	0.019	0.003	0.021
I:E ratio	42	0.881	0.923	0.711	0.811
Pressure support	84	0.775	0.766	0.703	0.811
Oxygen saturation	218	0.000	0.119	0.002	0.015
pH	239	0.047	0.021	0.316	0.619
PaO ₂	239	0.000	0.011	0.001	0.010
PaCO ₂	239	0.004	0.003	0.442	0.619
Base excess	234	0.689	0.000	0.367	0.619
HCO ⁻³	236	0.529	0.000	0.857	0.883
Lactate	216	0.000	0.505	0.385	0.619
Oxygenation Index	113	0.000	0.001	0.001	0.010
Ventilatory Ratio	167	0.053	0.404	0.427	0.619
Mean arterial pressure (lowest)	198	0.320	0.409	0.513	0.676
Liver-Bilirubin	70	0.668	0.727	0.696	0.811
Daily fluid balance	227	0.038	0.295	0.257	0.619
Cumulative fluid balance	227	0.035	0.129	0.108	0.558
SOFA Score	97	0.045	0.445	0.298	0.619
Non-Respiratory SOFA	108	0.100	0.541	0.346	0.619
Glucose	208	0.930	0.771	0.677	0.811
BUN	158	0.703	0.000	0.785	0.872
Creatinine	249	0.855	0.757	0.065	0.372
Sodium	251	0.192	0.036	0.194	0.619
Potassium	246	0.915	0.492	0.413	0.619
Bilirubin	192	0.884	0.277	0.227	0.619
Alkaline Phosphatase	205	0.808	0.000	0.342	0.619
AST	35	0.098	0.054	0.225	0.619
ALT	197	0.054	0.000	0.000	0.005
Creatinine Kinase	88	0.132	0.417	0.419	0.619
LDH	52	0.162	0.374	0.359	0.619
Haemoglobin	246	0.433	0.202	0.351	0.619
WBC	246	0.441	0.001	0.138	0.590
RBC	220	0.074	0.651	0.582	0.737
Platelet Count	244	0.040	0.000	0.000	0.005
Haematocrit	162	0.608	0.000	0.437	0.619
Neutrophils	246	0.143	0.057	0.340	0.619
Monocytes	244	0.956	0.000	0.522	0.676
Lymphocytes	245	0.881	0.000	0.043	0.275
Basophils	191	0.683	0.037	0.468	0.635
Eosinophils	193	0.874	0.002	0.153	0.590
APTT	137	0.424	0.800	0.420	0.619
PT	140	0.718	0.306	0.445	0.619
INR	110	0.381	0.667	0.266	0.619
Fibrinogen	80	0.033	0.021	0.654	0.811
Ferritin	55	0.224	0.565	0.344	0.619
D-dimer	70	0.009	0.562	0.374	0.619
CRP	217	0.203	0.042	0.227	0.619
High sensitivity Troponin	47	0.963	0.395	0.155	0.590

Table S11 - Uni- and multi-variate model analysis of pre-pronation factors associated prone responsiveness.

FieldLabel	median [IQR]	Univariate				Multivariate			
		Odds ratio	95% CI		P Value	Odds ratio	95% CI		P Value
Age		1.555	1.197	2.019	0.001	1.557	1.165	2.081	0.003
Male		0.875	0.474	1.617	0.671				
BMI	29.00 [25.28 33.18]	0.865	0.681	1.099	0.234				
Height	172.35 [165.00 178.00]	1.045	0.821	1.330	0.718				
symptoms days	7.00 [6.00 11.00]	1.039	0.810	1.332	0.764				
Hypertension		1.061	0.616	1.827	0.832				
Diabetes mellitus		1.393	0.749	2.591	0.296				
Oxygen saturation	93.00 [91.00 96.00]	0.758	0.589	0.975	0.031	0.982	0.714	1.351	0.911
pH	7.37 [7.31 7.42]	0.865	0.683	1.094	0.225				
PaCO ₂	6.70 [5.80 7.67]	1.257	0.989	1.598	0.062	1.198	0.890	1.611	0.234
HCO ⁻ ₃	26.60 [24.00 30.65]	0.988	0.784	1.247	0.922				
Lactate	1.30 [1.10 1.80]	1.610	1.260	2.057	0.000	1.331	0.992	1.785	0.057
Peak pressure	28.06 [25.00 31.00]	1.568	1.232	1.995	0.000	1.423	1.063	1.906	0.018
PEEP	11.00 [10.00 13.00]	1.359	1.062	1.738	0.015	1.256	0.927	1.702	0.142
Minute ventilation	9.88 [8.19 11.96]	1.083	0.854	1.374	0.510				
Dynamic Comp	30.14 [24.00 38.59]	0.981	0.770	1.251	0.880				
Ventilatory Ratio	2.11 [1.61 2.57]	1.159	0.903	1.488	0.246				
Cum fluid balance	1743.00 [216.14 4269.60]	1.445	1.133	1.843	0.003	1.232	0.919	1.650	0.162
Glucose	9.10 [7.50 11.10]	0.982	0.775	1.244	0.882				
BUN	10.00 [6.93 15.60]	1.095	0.857	1.399	0.466				
Sodium	141.00 [139.00 146.00]	1.217	0.964	1.537	0.099	1.189	0.890	1.589	0.241
Potassium	4.53 [4.30 4.90]	1.107	0.877	1.397	0.392				
ALP	85.00 [65.00 136.00]	0.991	0.782	1.255	0.940				
ALT	40.00 [27.00 58.00]	0.834	0.659	1.056	0.132				
Haemoglobin	103.00 [75.50 116.88]	0.931	0.738	1.174	0.543				
Haematocrit	0.33 [0.30 0.38]	0.970	0.753	1.250	0.816				
Neutrophils	8.80 [6.92 11.78]	1.149	0.910	1.453	0.244				
Monocytes	0.40 [0.30 0.70]	0.920	0.718	1.179	0.510				
Lymphocytes	0.80 [0.55 1.10]	0.898	0.715	1.128	0.356				
Basophils	0.02 [0.00 0.10]	1.232	0.921	1.650	0.160				
Eosinophils	0.10 [0.00 0.20]	0.986	0.715	1.360	0.931				
APTT	32.83 [29.00 37.85]	0.874	0.681	1.123	0.293				
PT	14.00 [12.10 15.30]	1.138	0.883	1.466	0.318				
Fibrinogen	7.30 [6.10 8.91]	0.967	0.758	1.235	0.790				
D-dimer	4017.50 [1630.00 10580.00]	1.141	0.886	1.470	0.308				
CRP	277.50 [183.45 339.00]	1.080	0.850	1.371	0.530				
SOFA Respiratory	3.00 [3.00 3.00]	1.894	1.352	2.654	0.000	1.708	1.168	2.499	0.006
SOFA Nervous		0.932	0.810	1.072	0.326				
SOFA Cardio		1.442	1.168	1.781	0.001	1.346	1.039	1.742	0.024
SOFA Liver		0.933	0.615	1.414	0.744				
SOFA Coagulation		1.616	0.866	3.017	0.132				
SOFA Kidneys		0.948	0.749	1.199	0.654				
Prone initiation day		1.044	0.981	1.110	0.175				
	* non-resp (N=127) vs repsonive (N=101)								

Table S12 - Uni- and multi-variate model analysis of post- pronation factors associated prone responsiveness.

FieldLabel	median [IQR]	Univariate				Multivariate			
		Odds ratio	95% CI		P Value	Odds ratio	95% CI		P Value
Age		1.485	1.164	1.893	0.001	1.431	1.082	1.892	0.012
Male		1.344	0.734	2.460	0.338				
BMI	29.00 [25.28 33.18]	0.849	0.672	1.073	0.171				
Height	172.35 [165.00 178.00]	1.057	0.835	1.339	0.643				
symptoms days	7.00 [6.00 11.00]	1.057	0.829	1.347	0.654				
Hypertension		1.085	0.644	1.828	0.758				
Diabetes mellitus		1.395	0.777	2.505	0.265				
Oxygen saturation	93.00 [91.00 95.00]	0.683	0.540	0.864	0.001	0.799	0.603	1.059	0.119
pH	7.35 [7.29 7.41]	0.851	0.680	1.065	0.160				
PaCO ₂	6.85 [6.01 8.10]	1.225	0.976	1.536	0.080	1.210	0.930	1.575	0.156
HCO ₃ ⁻	26.80 [23.90 30.20]	1.011	0.808	1.264	0.926				
Lactate	1.30 [1.00 1.70]	1.640	1.290	2.086	0.000	1.316	0.998	1.737	0.052
Peak pressure	28.00 [25.88 31.00]	1.468	1.163	1.854	0.001	1.432	1.101	1.862	0.007
PEEP	11.00 [10.00 13.00]	1.214	0.961	1.535	0.104				
Minute ventilation	9.89 [7.91 11.38]	0.956	0.764	1.196	0.693				
Dynamic Comp	30.18 [21.83 40.96]	0.924	0.733	1.166	0.506				
Ventilatory Ratio	2.05 [1.64 2.50]	1.184	0.934	1.501	0.162				
Cum fluid balance	2319.00 [389.06 5227.73]	1.217	0.965	1.536	0.098	0.922	0.693	1.227	0.579
Glucose	8.95 [7.39 11.33]	1.181	0.933	1.494	0.167				
BUN	10.65 [6.90 16.35]	1.152	0.911	1.458	0.238				
Sodium	142.00 [138.00 146.00]	1.151	0.916	1.446	0.227				
Potassium	4.60 [4.30 5.00]	0.963	0.766	1.212	0.748				
ALP	94.00 [67.00 142.25]	1.051	0.837	1.320	0.666				
ALT	41.00 [30.00 61.00]	0.928	0.738	1.168	0.525				
Haemoglobin	100.00 [79.00 117.25]	0.941	0.750	1.179	0.596				
Haematocrit	0.34 [0.29 0.37]	0.922	0.727	1.171	0.507				
Neutrophils	8.60 [6.86 11.90]	1.128	0.903	1.410	0.289				
Monocytes	0.43 [0.30 0.70]	0.818	0.652	1.027	0.083	0.758	0.581	0.990	0.042
Lymphocytes	0.72 [0.50 1.10]	0.865	0.687	1.090	0.219				
Basophils	0.01 [0.00 0.10]	0.965	0.712	1.307	0.817				
Eosinophils	0.10 [0.00 0.20]	0.947	0.697	1.285	0.725				
APTT	32.40 [28.65 37.82]	1.042	0.821	1.323	0.733				
PT	13.70 [11.90 14.95]	1.117	0.881	1.416	0.360				
CRP	289.00 [183.50 348.75]	0.946	0.751	1.192	0.638				
SOFA Respiratory	3.00 [3.00 4.00]	2.233	1.513	3.297	0.000	1.946	1.231	3.078	0.004
SOFA Nervous		0.910	0.791	1.046	0.186				
SOFA Cardio		1.420	1.163	1.735	0.001	1.134	0.893	1.441	0.301
SOFA Liver		0.996	0.654	1.518	0.986				
SOFA Coagulation		1.190	0.726	1.951	0.490				
SOFA Kidneys		0.932	0.747	1.162	0.531				
Prone initiation day		1.044	0.982	1.111	0.167				

* non-resp (N=138) vs repsonsive (N=109)

Table S13- Clinical and physiological characteristics, outcomes and interventions according to ICU outcome.

Clinical Characteristics			Outcome						
label	units		ALL		Survivors		Non-Survivors		P Value
			Total N	median [IQR] / N (%)	Group N	median [IQR] / N (%)	Group N	median [IQR] / N (%)	
Male			633	481 (76%)	365	263 (72.1%)	268	218 (81.3%)	0.007
White			542	250 (46.1%)	310	143 (46.1%)	232	107 (46.1%)	0.849
Age	years		633	59.0 [51.0 66.0]	365	56.0 [47.0 63.0]	268	63.0 [57.0 70.0]	0.000
BMI	kg/m ²		524	28.1 [24.9 32.8]	314	28.7 [25.1 33.6]	210	27.8 [24.7 31.2]	0.134
Time since onset of symptoms	days		408	8.0 [6.0 12.0]	242	9.0 [6.0 12.0]	166	7.0 [5.0 12.0]	0.101
ICU length of stay	days		633	14.0 [8.0 23.0]	365	17.0 [9.8 30.0]	268	11.0 [7.0 18.0]	0.000
Length of mechanical ventilation	days		633	13.0 [7.0 22.0]	365	15.0 [8.0 28.0]	268	11.0 [6.0 16.0]	0.000
ICU Mortality	%		633	268 (42.3%)	365	0 (0%)	268	268 (100%)	0.000
Vent									
FiO ₂ (%)			628	60.0 [45.0 80.0]	360	55.5 [40.0 70.0]	268	65.0 [55.0 80.0]	0.000
PaO ₂ to FiO ₂ ratio			626	18.3 [13.0 25.0]	359	19.8 [13.9 27.5]	267	17.0 [12.3 23.0]	0.000
Tidal Volume (mls/BW)	ml/Kg(BW)		472	6.8 [6.0 7.8]	286	6.9 [6.1 7.8]	186	6.8 [6.0 7.7]	0.351
Respiratory rate	bpm		627	18.8 [16.0 22.0]	360	18.0 [16.0 22.0]	267	20.0 [16.0 22.0]	0.357
Minute ventilation	L/minute		606	8.5 [6.9 10.4]	348	8.5 [6.9 10.4]	258	8.6 [6.9 10.5]	0.449
Peak pressure	ml/Kg(RBW)		599	26.0 [23.0 30.0]	344	25.3 [22.0 29.0]	255	27.0 [24.0 30.0]	0.000
Plateau pressure	ml/Kg(BW)		80	26.0 [22.5 28.5]	38	24.0 [21.0 28.0]	42	26.5 [24.0 29.0]	0.012
PEEP	cmH ₂ O		603	10.0 [8.0 12.0]	347	10.0 [8.0 12.0]	256	10.0 [10.0 12.0]	0.000
Mean airway pressure	cmH ₂ O		387	16.0 [13.2 19.0]	239	15.0 [13.0 18.0]	148	17.0 [14.0 20.0]	0.001
Pressure support	cmH ₂ O		371	10.0 [5.3 14.0]	217	10.0 [6.0 14.0]	154	10.0 [5.0 12.0]	0.516
Dynamic Compliance	mls/cmH ₂ O		564	31.5 [24.3 40.2]	327	32.5 [25.4 41.2]	237	30.0 [23.3 39.2]	0.033
Oxygenation Index			387	8.1 [5.1 12.5]	239	7.1 [4.7 10.4]	148	9.7 [6.4 14.4]	0.000
Ventilatory Ratio			470	1.5 [1.2 2.1]	284	1.5 [1.2 2.0]	186	1.6 [1.3 2.1]	0.033
ABG									
Oxygen saturation			518	95.0 [93.0 98.0]	308	96.0 [93.0 98.0]	210	95.0 [92.0 97.0]	0.006
pH			630	7.4 [7.3 7.4]	363	7.4 [7.3 7.4]	267	7.3 [7.3 7.4]	0.000
PaO ₂	kPa		630	10.7 [9.2 13.1]	363	10.7 [9.1 12.8]	267	10.9 [9.2 13.4]	0.441
PaCO ₂	kPa		630	6.0 [5.2 7.2]	363	5.9 [5.2 6.9]	267	6.1 [5.2 7.3]	0.136
Base excess			630	-0.3 [-2.6 2.2]	363	0.2 [-2.1 2.5]	267	-0.9 [-3.2 1.5]	0.001
HCO ₃	mmol/L		629	24.5 [22.5 26.7]	362	24.9 [22.9 27.0]	267	23.9 [21.9 26.0]	0.000
Lactate	mmol/L		604	1.2 [1.0 1.6]	347	1.1 [0.9 1.5]	257	1.3 [1.1 1.8]	0.000
SOFA									
SOFA score			428	9.0 [7.0 11.0]	246	8.0 [6.0 11.0]	182	10.0 [8.0 12.0]	0.000
SOFA Respiratory			626	3.0 [3.0 4.0]	359	3.0 [3.0 4.0]	267	3.0 [3.0 4.0]	0.000
SOFA Nervous			508	3.0 [0.0 4.0]	301	0.0 [0.0 4.0]	207	4.0 [0.0 4.0]	0.024
SOFA Cardiovascular			579	3.0 [3.0 4.0]	328	3.0 [3.0 4.0]	251	3.0 [3.0 4.0]	0.000
SOFA Liver			588	0.0 [0.0 0.0]	335	0.0 [0.0 0.0]	253	0.0 [0.0 0.0]	0.678
SOFA Coagulation			619	0.0 [0.0 0.0]	355	0.0 [0.0 0.0]	264	0.0 [0.0 0.0]	0.004
SOFA Kidneys			629	0.0 [0.0 1.0]	362	0.0 [0.0 1.0]	267	0.0 [0.0 1.0]	0.007
FCB									
Haemoglobin	g/dL		619	114.0 [92.0 128.0]	355	115.0 [95.0 128.0]	264	113.0 [85.8 129.0]	0.380
Haematocrit			312	0.4 [0.3 0.4]	168	0.4 [0.3 0.4]	144	0.4 [0.3 0.4]	0.030
White blood cell count	x10 ⁹ /L		619	9.6 [7.0 13.1]	355	9.4 [6.9 12.6]	264	9.9 [7.3 13.5]	0.209
Neutrophils	x10 ⁹ /L		618	8.1 [5.7 11.3]	355	7.6 [5.3 10.7]	263	8.6 [6.2 12.3]	0.010
Monocytes	x10 ⁹ /L		614	0.4 [0.3 0.7]	355	0.5 [0.3 0.7]	259	0.4 [0.2 0.7]	0.003
Lymphocytes	x10 ⁹ /L		615	0.8 [0.5 1.2]	355	0.9 [0.6 1.3]	260	0.7 [0.5 1.0]	0.000
Basophils	x10 ⁹ /L		498	0.0 [0.0 0.1]	281	0.0 [0.0 0.1]	217	0.0 [0.0 0.0]	0.001
Eosinophils	x10 ⁹ /L		493	0.0 [0.0 0.1]	286	0.0 [0.0 0.1]	207	0.0 [0.0 0.1]	0.000
Coag									
Platelet Count	µmol/L		619	246.0 [185.3 320.8]	355	261.0 [199.0 334.8]	264	229.5 [171.0 305.5]	0.001
APTT	U/L		398	32.1 [28.3 37.4]	209	32.0 [28.7 37.1]	189	32.1 [28.0 37.5]	0.603
PT	U/L		396	13.9 [12.4 15.2]	209	13.9 [12.5 15.1]	187	13.8 [12.4 15.5]	0.713
INR	U/L		212	1.1 [1.1 1.2]	113	1.1 [1.1 1.2]	99	1.1 [1.1 1.2]	0.616
Fibrinogen	U/L		410	6.8 [5.6 8.1]	246	6.8 [5.8 8.0]	164	6.7 [5.4 8.2]	0.321
D-dimer	U/L		391	2642.0 [990.5 7701.3]	221	2270.0 [902.3 5680.0]	170	3290.5 [1239.0 15575.0]	0.002
Electrolytes									
Blood Urea Nitrogen (BUN)	mmol/L		498	7.4 [4.9 11.8]	277	6.8 [4.7 10.4]	221	8.4 [5.7 13.3]	0.000
Creatinine	µmol/L		621	88.0 [66.0 140.0]	356	82.0 [63.0 123.0]	265	99.0 [71.8 152.1]	0.000
Sodium	mmol/L		621	139.0 [136.0 142.0]	357	139.0 [136.0 142.0]	264	138.0 [135.0 141.0]	0.071
Potassium	mmol/L		620	4.4 [4.0 4.8]	356	4.4 [4.0 4.8]	264	4.4 [4.1 4.8]	0.462
Liver									
Bilirubin	µmol/L		588	10.0 [7.0 15.0]	335	10.0 [7.0 14.0]	253	10.0 [7.0 15.0]	0.068
Alkaline Phosphatase	U/L		600	77.0 [58.5 113.0]	342	76.0 [53.0 116.0]	258	79.5 [62.0 110.0]	0.341
AST	U/L		99	59.0 [39.3 85.0]	50	53.0 [37.0 63.0]	49	70.0 [43.3 96.8]	0.018
ALT	U/L		592	37.0 [24.0 59.0]	338	37.0 [23.0 62.0]	254	37.0 [24.0 56.0]	0.820
Inflammation									
LDH (Lactate dehydrogenase)	U/L		194	649.0 [452.0 921.0]	109	614.0 [397.3 818.8]	85	683.0 [506.3 977.3]	0.079
Ferritin	ng/mL		290	1218.5 [696.0 2320.0]	173	1144.0 [681.5 2056.3]	117	1410.0 [714.8 2814.0]	0.025
CRP	mg/L		592	215.7 [135.0 311.0]	350	200.5 [117.4 298.0]	242	242.2 [159.0 325.6]	0.000
Procalcitonin	µg/L		125	0.7 [0.3 2.2]	86	0.5 [0.3 1.3]	39	1.6 [0.6 5.5]	0.000
Cardiac									
Creatinine Kinase	U/L		243	217.0 [83.5 637.3]	132	202.0 [84.0 578.8]	111	222.0 [82.8 639.5]	0.733
High sensitivity Troponin			253	21.8 [11.0 61.0]	147	16.0 [9.0 41.3]	106	29.4 [13.0 103.0]	0.001
NT Pro BNP	pg/ml		58	537.5 [165.0 1478.0]	37	349.0 [139.0 823.5]	21	857.0 [565.0 3416.8]	0.005
Fluid									
Cumulative Fluid balance	L		589	343.0 [-212.3 1058.3]	342	273.4 [-262.0 938.0]	247	413.0 [-182.4 1360.0]	0.033
Adjunctive interventions									
Was patient transferred in?			633	159 (25.1%)	365	103 (28.2%)	268	56 (20.9%)	0.036
Tracheostomy			516	145 (28.1%)	305	122 (40%)	211	23 (10.9%)	0.000
PEEP>10			622	459 (73.8%)	359	231 (64.3%)	263	228 (86.7%)	0.000
Neuro-muscular blockade			617	434 (70.3%)	354	215 (60.7%)	263	219 (83.3%)	0.000
Prone positioning			551	273 (49.5%)	328	129 (39.3%)	223	144 (64.6%)	0.000
Inhaled nitric oxide			521	73 (14%)	309	29 (9.3%)	212	44 (20.8%)	0.001
Inhaled prostacyclin			521	55 (10.6%)	309	30 (9.7%)	212	25 (11.8%)	0.624
Bronchoscopy			521	51 (9.7%)	309	33 (10.7%)	212	18 (8.49%)	0.288
Renal replacement therapy			555	211 (38%)	322	89 (27.6%)	233	122 (52.4%)	0.000
Diuretics			598	443 (74.1%)	348	256 (73.6%)	250	187 (74.8%)	0.922
Corticosteroids			582	304 (52.2%)	342	173 (50.6%)	240	131 (54.6%)	0.712
Therapeutic heparin			438	55 (12.6%)	255	30 (11.8%)	183	25 (13.7%)	0.624
Antibiotics			313	219 (70%)	168	109 (64.9%)	145	110 (75.9%)	0.003
Prone									
No of proning episodes			273	1.0 [1.0 2.0]	129	1.0 [1.0 2.0]	144	1.0 [1.0 2.0]	0.864
mech vent prior first prone	days		273	3.0 [1.8 6.0]	129	3.0 [1.0 6.0]	144	4.0 [2.0 7.0]	0.065
duration of first prone	days		273	2.0 [1.0 4.0]	129	2.0 [1.0 4.0]	144	2.0 [1.0 3.5]	0.552
responders to proning			270	119 (44.1%)	128	82 (64.1%)	142	37 (26.1%)	0.006
missed windows prior to prone			273	3.0 [1.0 6.0]	129	2.0 [0.8 5.0]	144	3.0 [1.0 7.0]	0.020
missed windows - unproned			360	3.0 [1.0 10.0]	236	2.0 [0.0 6.0]	124	7.0 [3.0 15.5]	0.000
Tracheostomy									
mech vent prior to tracheostomy	days		145	13.0 [9.0 18.0]	122	14.0 [10.0 18.0]	23	13.0 [4.0 18.8]	0.127
duration of tracheostomy	days		145	14.0 [6.0 21.3]	122	15.0 [7.0 22.0]	23	6.0 [2.3 12.8]	0.001
End of life parameters									
life sustaining therapy withdrawn			130	85 (65.4%)	0	0 (NaN%)	130	85 (65.4%)	0.000
cardiac arrest during admission			244	21 (8.61%)	122	8 (6.56%)	122	13 (10.7%)	0.065

Table S14 - Time series mixed model ANOVA according to ICU outcome.

label	N	p-values			
		Dead vs Alive	parameter over time	interaction	FDR interaction
PaO ₂ / FiO ₂	472	0.000	0.000	0.000	0.000
Dynamic Compliance	341	0.001	0.000	0.000	0.000
Respiratory rate	458	0.062	0.001	0.561	0.632
FiO ₂ (%)	503	0.000	0.000	0.000	0.000
Tidal Volume per Kg	347	0.993	0.343	0.537	0.632
Tidal Volume	433	0.285	0.388	0.699	0.724
Minute ventilation	404	0.039	0.000	0.285	0.405
Peak pressure	426	0.000	0.000	0.000	0.000
PEEP	390	0.000	0.001	0.104	0.204
Dynamic delta pressure (peakP-peep)	124	0.001	0.058	0.009	0.022
Mean airway pressure	256	0.000	0.000	0.000	0.000
I:E ratio	93	0.050	0.552	0.261	0.391
Pressure support	169	0.021	0.045	0.063	0.134
Oxygen saturation	417	0.000	0.125	0.002	0.007
pH	487	0.000	0.000	0.000	0.000
PaO ₂	484	0.482	0.274	0.167	0.280
PaCO ₂	487	0.000	0.105	0.000	0.000
Base excess	478	0.000	0.000	0.405	0.513
HCO ⁻³	479	0.000	0.000	0.380	0.504
Lactate	451	0.000	0.187	0.011	0.026
Oxygenation Index	237	0.000	0.000	0.000	0.000
Ventilatory Ratio	314	0.009	0.000	0.116	0.212
Mean arterial pressure (lowest)	386	0.000	0.000	0.000	0.000
Liver-Bilirubin	167	0.017	0.103	0.248	0.382
Daily fluid balance	480	0.000	0.000	0.348	0.472
Cumulative fluid balance	480	0.000	0.006	0.000	0.000
SOFA Score	192	0.000	0.000	0.000	0.000
Non-Respiratory SOFA	224	0.000	0.000	0.000	0.000
Glucose	465	0.021	0.020	0.114	0.212
BUN	382	0.000	0.004	0.001	0.002
Creatinine	520	0.000	0.120	0.000	0.000
Sodium	523	0.706	0.000	0.393	0.509
Potassium	518	0.000	0.781	0.008	0.020
Bilirubin	401	0.003	0.000	0.000	0.000
Alkaline Phosphatase	441	0.893	0.000	0.339	0.471
AST	55	0.988	0.517	0.559	0.632
ALT	418	0.092	0.000	0.231	0.366
Creatinine Kinase	127	0.643	0.275	0.467	0.579
LDH	66	0.845	0.001	0.283	0.405
Haemoglobin	515	0.001	0.080	0.081	0.165
WBC	513	0.017	0.003	0.014	0.031
RBC	415	0.256	0.486	0.535	0.632
Platelet Count	511	0.000	0.000	0.001	0.002
Haematocrit	252	0.754	0.000	0.001	0.003
Neutrophils	511	0.000	0.019	0.002	0.006
Monocytes	509	0.000	0.000	0.138	0.238
Lymphocytes	509	0.000	0.000	0.008	0.020
Basophils	361	0.020	0.007	0.570	0.632
Eosinophils	386	0.000	0.000	0.614	0.660
APTT	255	0.008	0.223	0.002	0.005
PT	260	0.671	0.632	0.654	0.691
INR	163	0.895	0.954	0.836	0.836
Fibrinogen	137	0.518	0.007	0.577	0.632
Ferritin	75	0.123	0.184	0.119	0.212
D-dimer	147	0.000	0.949	0.772	0.785
CRP	457	0.000	0.000	0.007	0.019
High sensitivity Troponin	62	0.204	0.069	0.198	0.323

Table S15- Uni- and multi-variate model analysis of factors associated with ICU mortality.

FieldLabel	median [IQR]	Univariate				Multivariate			
		Odds ratio	95% CI		P Value	Odds ratio	95% CI		P Value
Age		2.017	1.694	2.401	0.000	1.951	1.584	2.402	0.000
Male		1.560	1.032	2.357	0.035	2.052	1.168	3.607	0.012
BMI	28.13 [24.90 32.76]	0.850	0.724	0.997	0.046	0.844	0.687	1.038	0.108
Height	173.00 [165.00 178.00]	0.929	0.788	1.095	0.381				
symptoms days	8.00 [6.00 12.00]	0.880	0.745	1.040	0.133				
Hypertension		1.318	0.932	1.863	0.119				
Diabetes mellitus		1.191	0.815	1.741	0.366				
Oxygen saturation	95.00 [93.00 98.00]	0.816	0.695	0.959	0.013	1.078	0.872	1.332	0.487
pH	7.36 [7.30 7.42]	0.796	0.683	0.928	0.004	0.849	0.670	1.074	0.172
PaCO ₂	5.96 [5.16 7.15]	1.056	0.907	1.230	0.484				
HCO ⁻ ₃	24.50 [22.48 26.70]	0.764	0.654	0.892	0.001	0.807	0.641	1.018	0.070
Lactate	1.20 [1.00 1.60]	1.522	1.294	1.791	0.000	1.523	1.210	1.917	0.000
Peak pressure	26.00 [23.00 30.00]	1.240	1.061	1.449	0.007	0.963	0.731	1.268	0.788
PEEP	10.00 [8.00 12.00]	1.407	1.175	1.685	0.000	1.150	0.896	1.475	0.272
Minute ventilation	8.53 [6.88 10.44]	0.967	0.831	1.125	0.663				
Dynamic Comp	31.47 [24.26 40.19]	0.860	0.735	1.005	0.058	0.706	0.543	0.919	0.010
Oxygenation Index	8.10 [5.09 12.45]	1.371	1.160	1.621	0.000	1.204	0.903	1.605	0.205
Ventilatory Ratio	1.54 [1.22 2.07]	1.152	0.983	1.349	0.081	1.151	0.911	1.453	0.238
Cum fluid balance	343.00 [-212.25 1058.32]	1.163	0.997	1.356	0.055	0.874	0.715	1.068	0.188
Glucose	8.39 [6.79 10.95]	1.246	1.065	1.457	0.006	1.067	0.876	1.300	0.521
BUN	7.40 [4.90 11.80]	1.412	1.202	1.657	0.000	1.058	0.805	1.392	0.685
Sodium	139.00 [136.00 142.00]	0.880	0.754	1.026	0.103				
Potassium	4.40 [4.00 4.80]	1.040	0.891	1.213	0.620				
ALP	77.00 [58.50 113.00]	1.056	0.908	1.227	0.480				
ALT	37.00 [24.00 59.00]	0.966	0.830	1.124	0.652				
Haemoglobin	114.00 [92.00 128.00]	0.928	0.800	1.078	0.329				
Neutrophils	8.10 [5.71 11.30]	1.206	1.034	1.407	0.017	1.078	0.858	1.354	0.520
Monocytes	0.41 [0.30 0.70]	0.794	0.682	0.925	0.003	0.838	0.671	1.046	0.119
Lymphocytes	0.80 [0.50 1.20]	0.700	0.593	0.827	0.000	0.967	0.771	1.213	0.773
Basophils	0.00 [0.00 0.10]	0.465	0.304	0.712	0.000	0.684	0.391	1.195	0.182
Eosinophils	0.00 [0.00 0.10]	0.400	0.276	0.579	0.000	0.442	0.267	0.733	0.002
APTT	32.10 [28.30 37.40]	0.968	0.817	1.148	0.710				
PT	13.85 [12.40 15.20]	1.105	0.937	1.303	0.236				
Fibrinogen	6.80 [5.60 8.10]	0.953	0.808	1.125	0.571				
D-dimer	2642.00 [990.50 7701.25]	1.356	1.149	1.602	0.000	1.164	0.941	1.439	0.161
CRP	215.65 [135.00 311.00]	1.286	1.100	1.505	0.002	1.039	0.842	1.281	0.722
SOFA Respiratory		1.419	1.160	1.736	0.001	1.235	0.858	1.776	0.256
SOFA Nervous		1.100	1.008	1.201	0.032	1.110	0.877	1.405	0.386
SOFA Cardio		1.227	1.050	1.433	0.010	1.115	0.861	1.445	0.409
SOFA Liver		1.079	0.787	1.479	0.638				
SOFA Coagulation		1.590	1.138	2.221	0.007	1.951	1.167	3.262	0.011
SOFA Kidneys		1.192	1.017	1.399	0.031	1.172	0.836	1.643	0.356
SOFA score		1.195	1.113	1.284	0.000	0.921	0.740	1.147	0.463

* Died (N=235) vs Discharged (N=314)

Table S16 - Time series mixed model ANOVA according to ARDS on admission

label	N	p-values			
		ARDS Group	parameter over time	interaction	FDR interaction
PaO ₂ / FiO ₂	472	0.000	0.000	0.000	0.000
Dynamic Compliance	341	0.000	0.011	0.304	0.656
Respiratory rate	458	0.118	0.000	0.820	0.922
FiO ₂ (%)	503	0.000	0.000	0.000	0.000
Tidal Volume per Kg	347	0.506	0.267	0.854	0.922
Tidal Volume	433	0.606	0.119	0.811	0.922
Minute ventilation	404	0.041	0.000	0.750	0.913
Peak pressure	426	0.000	0.000	0.000	0.003
PEEP	390	0.000	0.103	0.566	0.798
Dynamic delta pressure (peakP-peep)	124	0.022	0.001	0.227	0.656
Mean airway pressure	256	0.000	0.173	0.117	0.450
I:E ratio	93	0.015	0.656	0.461	0.798
Pressure support	169	0.415	0.878	0.917	0.934
Oxygen saturation	417	0.001	0.000	0.001	0.007
pH	487	0.000	0.014	0.574	0.798
PaO ₂	484	0.000	0.000	0.000	0.000
PaCO ₂	487	0.000	0.000	0.043	0.196
Base excess	478	0.022	0.000	0.577	0.798
HCO ⁻³	479	0.001	0.000	0.525	0.798
Lactate	451	0.046	0.000	0.009	0.065
Oxygenation Index	237	0.000	0.000	0.000	0.000
Ventilatory Ratio	314	0.003	0.000	0.381	0.736
Mean arterial pressure (lowest)	386	0.610	0.045	0.847	0.922
Liver-Bilirubin	167	0.574	0.133	0.294	0.656
Daily fluid balance	480	0.042	0.194	0.281	0.656
Cumulative fluid balance	480	0.013	0.424	0.145	0.497
SOFA Score	192	0.019	0.712	0.740	0.913
Non-Respiratory SOFA	224	0.019	0.066	0.163	0.517
Glucose	465	0.290	0.312	0.761	0.913
BUN	382	0.075	0.000	0.532	0.798
Creatinine	520	0.314	0.841	0.011	0.065
Sodium	523	0.431	0.000	0.820	0.922
Potassium	518	0.139	0.853	0.010	0.065
Bilirubin	401	0.124	0.192	0.706	0.913
Alkaline Phosphatase	441	0.116	0.000	0.147	0.497
AST	55	0.018	0.729	0.626	0.845
ALT	418	0.912	0.000	0.014	0.076
Creatinine Kinase	127	0.433	0.796	0.719	0.913
Haemoglobin	515	0.978	0.147	0.083	0.343
WBC	513	0.751	0.002	0.487	0.798
RBC	415	0.049	0.743	0.967	0.967
Platelet Count	511	0.191	0.000	0.264	0.656
Haematocrit	252	0.190	0.001	0.039	0.192
Neutrophils	511	0.054	0.020	0.288	0.656
Monocytes	509	0.002	0.000	0.563	0.798
Lymphocytes	509	0.256	0.001	0.558	0.798
Basophils	361	0.883	0.002	0.369	0.736
Eosinophils	386	0.899	0.000	0.539	0.798
APTT	255	0.146	0.309	0.248	0.656
PT	260	0.322	0.697	0.469	0.798
INR	163	0.002	0.741	0.907	0.934
Fibrinogen	137	0.711	0.090	0.916	0.934
D-dimer	147	0.027	0.504	0.282	0.656
CRP	457	0.000	0.039	0.326	0.676

Table S17 - Missing values for each parameter – by site

Site	All	A	B	C	D	E	F	G	H	I	J	K	L	M	N	O	P	Q	R
N	633	2	1	18	35	49	19	36	57	34	34	3	64	54	5	9	31	9	173
% of Missing Data																			
PaO ₂ / FiO ₂	6%	0%	2%	5%	3%	8%	7%	1%	10%	4%	22%	0%	1%	6%	0%	0%	5%	5%	5%
Oxygen saturation	21%	7%	0%	7%	0%	1%	100%	100%	100%	0%	2%	0%	1%	0%	0%	0%	0%	0%	0%
pH	5%	0%	2%	4%	1%	2%	6%	1%	10%	4%	13%	0%	1%	6%	0%	0%	3%	6%	4%
PaCO ₂	5%	0%	2%	4%	1%	2%	6%	1%	10%	4%	13%	0%	1%	6%	0%	0%	3%	6%	4%
Base excess	6%	0%	2%	5%	2%	3%	17%	2%	12%	4%	14%	0%	2%	7%	0%	0%	3%	6%	4%
HCO ⁻ ₃	5%	0%	2%	4%	2%	2%	13%	1%	10%	5%	13%	0%	1%	6%	0%	0%	3%	6%	5%
Lactate	9%	0%	100%	4%	3%	2%	6%	1%	10%	5%	13%	0%	1%	7%	0%	0%	90%	6%	5%
Peak pressure	13%	0%	4%	12%	14%	12%	7%	7%	4%	11%	17%	8%	4%	6%	0%	1%	10%	3%	21%
PEEP	14%	0%	2%	16%	20%	9%	0%	2%	0%	6%	18%	0%	2%	4%	0%	1%	4%	2%	30%
Mean airway pressure	41%	0%	25%	100%	22%	14%	82%	28%	12%	96%	20%	32%	100%	97%	0%	22%	58%	100%	32%
Tidal Volume per Kg	30%	100%	8%	51%	14%	28%	8%	22%	89%	6%	14%	0%	15%	37%	67%	97%	47%	86%	21%
Respiratory rate	12%	0%	57%	11%	13%	34%	0%	0%	0%	0%	10%	0%	0%	0%	0%	0%	5%	0%	20%
Minute ventilation	15%	0%	62%	34%	14%	37%	8%	6%	3%	2%	16%	0%	4%	4%	0%	1%	21%	2%	22%
Dynamic Compliance	19%	0%	9%	37%	20%	14%	13%	9%	5%	16%	20%	0%	6%	4%	3%	1%	26%	5%	31%
Oxygenation Index	43%	0%	25%	100%	22%	16%	82%	29%	20%	96%	25%	32%	100%	97%	0%	22%	59%	100%	32%
Ventilatory Ratio	34%	100%	62%	54%	15%	48%	14%	23%	90%	9%	20%	0%	16%	39%	67%	97%	48%	86%	22%
SOFA Score	47%	13%	96%	21%	22%	17%	65%	54%	68%	58%	81%	84%	76%	55%	6%	47%	80%	59%	31%
Non-Respiratory SOFA	44%	13%	96%	18%	18%	8%	63%	52%	59%	56%	78%	84%	76%	52%	6%	47%	79%	55%	29%
Cumulative fluid balance	11%	7%	100%	5%	4%	7%	3%	4%	28%	0%	10%	4%	3%	2%	3%	1%	83%	0%	4%
Glucose	12%	13%	100%	10%	1%	3%	6%	1%	3%	8%	21%	12%	4%	61%	6%	4%	90%	2%	2%
BUN	26%	0%	100%	19%	10%	100%	8%	4%	5%	4%	100%	8%	7%	3%	3%	10%	100%	8%	11%
Creatinine	6%	0%	4%	6%	6%	3%	8%	4%	5%	4%	6%	8%	4%	3%	3%	6%	6%	8%	7%
Sodium	5%	0%	4%	7%	7%	1%	5%	1%	3%	4%	6%	8%	3%	3%	3%	3%	6%	8%	7%
Potassium	5%	0%	4%	6%	7%	4%	5%	1%	3%	4%	6%	8%	4%	3%	3%	3%	6%	9%	8%
Bilirubin	16%	13%	11%	6%	14%	2%	19%	5%	21%	8%	6%	12%	3%	37%	6%	46%	60%	47%	14%
Alkaline Phosphatase	11%	0%	11%	10%	9%	2%	8%	4%	5%	11%	6%	12%	2%	32%	6%	27%	61%	33%	8%
AST	92%	13%	100%	97%	100%	100%	100%	100%	100%	16%	98%	76%	22%	100%	78%	99%	97%	100%	100%
ALT	13%	13%	11%	6%	11%	2%	9%	9%	6%	7%	6%	12%	3%	38%	3%	46%	60%	68%	10%
Creatinine Kinase	71%	100%	98%	99%	100%	8%	83%	40%	71%	14%	26%	48%	8%	99%	33%	100%	88%	91%	100%
LDH	80%	47%	98%	95%	97%	11%	100%	100%	99%	17%	50%	96%	51%	74%	8%	99%	88%	98%	95%
Haemoglobin	5%	0%	4%	2%	6%	1%	8%	4%	5%	3%	7%	8%	2%	4%	3%	4%	6%	20%	7%
WBC	5%	0%	4%	2%	6%	1%	8%	4%	5%	3%	7%	8%	2%	4%	3%	5%	6%	20%	7%
RBC	25%	0%	4%	2%	6%	1%	100%	100%	100%	6%	7%	8%	4%	5%	3%	5%	6%	20%	7%
Platelet Count	6%	0%	4%	2%	6%	1%	9%	4%	5%	5%	7%	8%	2%	4%	3%	6%	6%	20%	8%
Haematocrit	63%	73%	4%	5%	100%	1%	100%	100%	100%	3%	7%	8%	2%	3%	3%	5%	6%	20%	100%
Neutrophils	6%	0%	4%	3%	6%	1%	9%	6%	6%	3%	7%	8%	3%	5%	6%	6%	6%	20%	7%
Monocytes	6%	0%	4%	3%	7%	1%	9%	6%	6%	3%	7%	8%	4%	5%	6%	6%	6%	20%	7%
Lymphocytes	6%	0%	4%	3%	6%	1%	9%	6%	6%	4%	7%	8%	4%	5%	6%	6%	6%	20%	7%
Basophils	20%	0%	4%	3%	33%	1%	9%	6%	6%	4%	7%	8%	4%	6%	6%	6%	6%	21%	44%
Eosinophils	16%	0%	4%	3%	28%	1%	9%	6%	6%	4%	7%	8%	4%	6%	6%	6%	6%	20%	34%
APTT	50%	27%	9%	3%	100%	3%	10%	6%	6%	14%	13%	8%	8%	53%	17%	42%	45%	74%	100%
PT	50%	27%	9%	3%	100%	3%	10%	6%	7%	14%	12%	8%	7%	54%	8%	44%	45%	74%	100%
INR	75%	100%	100%	2%	100%	3%	98%	99%	96%	11%	12%	8%	6%	100%	8%	97%	100%	100%	100%
Fibrinogen	50%	27%	40%	16%	23%	10%	100%	100%	100%	99%	34%	52%	22%	55%	17%	70%	56%	76%	38%
Ferritin	63%	47%	98%	75%	57%	18%	100%	100%	100%	19%	58%	68%	44%	72%	31%	32%	80%	100%	56%
D-dimer	48%	60%	100%	72%	63%	17%	11%	11%	11%	21%	58%	60%	49%	73%	6%	31%	93%	94%	63%
Triglycerides	77%	93%	94%	96%	58%	99%	100%	100%	100%	97%	60%	56%	88%	81%	89%	54%	86%	95%	59%
CRP	11%	7%	4%	20%	6%	2%	7%	5%	5%	13%	6%	16%	2%	74%	6%	4%	6%	94%	8%
Procalcitonin	80%	87%	98%	79%	57%	93%	100%	100%	100%	98%	94%	64%	91%	99%	100%	61%	91%	61%	59%
High sensitivity Troponin	64%	80%	100%	79%	55%	7%	100%	100%	100%	92%	47%	52%	44%	73%	33%	43%	88%	98%	55%
NT Pro BNP	97%	80%	100%	78%	97%	100%	100%	100%	100%	97%	89%	100%	100%	100%	97%	98%	98%	97%	96%

Table S18 - Missing values for each parameter – by day

Site	Day 0	Day 1	Day 2	Day 3	Day 4	Day 5	Day 6	Day 7	Day 8	Day 9	Day10	Day11	Day12	Day13	Day14	Day15	Day16	Day17	Day18	Day19	Day20	Day21
N	633	616	588	570	547	522	486	469	435	404	377	344	321	300	275	255	234	219	202	185	174	162
% of Missing Data																						
PaO ₂ / FIO ₂	5%	2%	2%	3%	3%	2%	2%	3%	4%	3%	5%	3%	5%	5%	5%	6%	6%	6%	9%	6%	8%	8%
Oxygen saturation	19%	19%	18%	18%	18%	19%	19%	18%	18%	19%	20%	22%	21%	22%	21%	23%	22%	22%	22%	23%	24%	23%
pH	2%	1%	2%	2%	3%	2%	2%	3%	3%	2%	3%	2%	3%	3%	3%	4%	4%	5%	5%	4%	6%	7%
PaCO ₂	2%	1%	2%	2%	3%	2%	2%	3%	3%	2%	3%	2%	3%	3%	3%	4%	4%	5%	5%	4%	6%	7%
Base excess	3%	1%	2%	3%	4%	3%	2%	4%	4%	3%	4%	3%	4%	5%	4%	5%	6%	6%	7%	5%	7%	9%
HCO ⁻ ₃	3%	1%	2%	3%	3%	2%	2%	3%	3%	3%	4%	3%	3%	3%	3%	5%	6%	5%	6%	5%	7%	7%
Lactate	7%	5%	6%	7%	7%	6%	7%	8%	9%	7%	8%	8%	9%	9%	9%	9%	9%	9%	9%	9%	8%	11%
Peak pressure	12%	6%	4%	5%	6%	8%	6%	7%	8%	7%	7%	9%	12%	10%	9%	12%	14%	12%	13%	11%	15%	17%
PEEP	10%	6%	8%	9%	11%	12%	9%	11%	12%	12%	11%	11%	11%	13%	11%	14%	13%	13%	14%	14%	16%	18%
Mean airway pressure	46%	39%	37%	37%	38%	39%	36%	37%	39%	37%	36%	35%	36%	35%	36%	38%	40%	39%	41%	41%	41%	41%
Tidal Volume per Kg	32%	25%	24%	25%	27%	27%	24%	26%	26%	26%	27%	28%	30%	29%	28%	29%	29%	28%	28%	26%	28%	30%
Respiratory rate	5%	1%	3%	4%	6%	8%	6%	6%	8%	7%	8%	10%	12%	10%	10%	11%	13%	11%	12%	14%	14%	17%
Minute ventilation	14%	5%	6%	8%	9%	11%	8%	9%	11%	10%	11%	12%	14%	14%	14%	16%	19%	17%	15%	16%	19%	20%
Dynamic Compliance	21%	13%	12%	13%	13%	16%	11%	15%	17%	16%	14%	15%	16%	16%	15%	16%	18%	18%	17%	17%	20%	20%
Oxygenation Index	48%	40%	38%	39%	40%	40%	37%	38%	40%	38%	38%	36%	36%	36%	38%	39%	41%	41%	44%	42%	44%	44%
Ventilatory Ratio	34%	26%	26%	28%	29%	30%	27%	28%	30%	29%	30%	31%	32%	31%	31%	33%	35%	32%	30%	30%	33%	38%
SOFA Score	75%	40%	39%	42%	41%	42%	41%	44%	43%	44%	41%	43%	42%	47%	42%	46%	45%	44%	46%	45%	49%	48%
Non-Respiratory SOFA	71%	38%	36%	37%	38%	39%	38%	42%	41%	42%	38%	40%	40%	43%	38%	44%	43%	40%	42%	43%	44%	42%
Cumulative fluid balance	47%	7%	7%	8%	7%	7%	7%	10%	9%	8%	9%	9%	9%	8%	8%	9%	8%	8%	9%	6%	7%	6%
Glucose	12%	12%	11%	12%	10%	10%	10%	11%	10%	11%	11%	12%	12%	11%	11%	10%	12%	11%	12%	10%	10%	6%
BUN	50%	22%	21%	21%	20%	21%	24%	23%	26%	24%	25%	26%	27%	27%	25%	27%	29%	26%	28%	28%	25%	25%
Creatinine	35%	3%	1%	2%	2%	2%	2%	2%	3%	2%	3%	4%	3%	3%	2%	5%	5%	3%	2%	1%	4%	4%
Sodium	34%	3%	1%	2%	1%	1%	1%	2%	2%	2%	3%	3%	2%	3%	2%	4%	3%	3%	3%	2%	1%	2%
Potassium	35%	3%	1%	2%	2%	1%	1%	2%	3%	2%	3%	3%	3%	2%	3%	4%	3%	4%	3%	2%	1%	2%
Bilirubin	38%	12%	13%	11%	11%	11%	13%	14%	12%	13%	12%	15%	13%	15%	12%	17%	16%	17%	15%	16%	14%	14%
Alkaline Phosphatase	36%	10%	10%	8%	8%	7%	10%	9%	8%	8%	8%	10%	9%	10%	8%	9%	9%	8%	8%	8%	8%	7%
AST	88%	87%	86%	85%	86%	87%	87%	89%	89%	89%	90%	95%	95%	96%	95%	94%	97%	97%	97%	97%	98%	99%
ALT	38%	11%	11%	10%	9%	9%	11%	11%	10%	10%	10%	12%	11%	13%	10%	13%	12%	11%	10%	10%	10%	9%
Creatinine Kinase	70%	67%	67%	65%	67%	66%	67%	66%	68%	67%	72%	71%	73%	71%	67%	72%	71%	76%	71%	73%	71%	71%
LDH	78%	77%	77%	76%	75%	73%	76%	77%	74%	76%	79%	81%	79%	80%	79%	80%	82%	83%	83%	82%	82%	80%
Haemoglobin	34%	3%	1%	2%	1%	2%	1%	1%	2%	2%	2%	4%	3%	3%	2%	4%	3%	3%	3%	3%	3%	3%
WBC	34%	3%	1%	2%	1%	2%	1%	1%	2%	2%	2%	4%	3%	3%	2%	4%	6%	4%	3%	3%	3%	3%
RBC	52%	22%	19%	20%	19%	20%	20%	20%	21%	22%	25%	24%	24%	23%	25%	25%	25%	25%	25%	25%	26%	25%
Platelet Count	34%	3%	2%	2%	2%	3%	1%	1%	2%	2%	2%	4%	4%	2%	3%	4%	6%	4%	3%	4%	3%	2%
Haematocrit	56%	53%	53%	54%	54%	55%	55%	56%	56%	58%	59%	63%	64%	63%	63%	63%	64%	65%	65%	66%	67%	69%
Neutrophils	34%	3%	2%	2%	1%	3%	2%	1%	2%	3%	3%	5%	4%	3%	3%	4%	6%	4%	5%	4%	3%	3%
Monocytes	35%	4%	2%	2%	2%	3%	2%	1%	2%	3%	3%	5%	4%	3%	3%	4%	6%	4%	5%	4%	3%	4%
Lymphocytes	35%	4%	2%	2%	1%	3%	2%	1%	2%	3%	3%	5%	4%	3%	3%	4%	6%	4%	5%	4%	3%	3%
Basophils	38%	24%	23%	25%	23%	23%	21%	21%	18%	22%	19%	20%	19%	16%	16%	15%	13%	14%	11%	12%	14%	
Eosinophils	38%	24%	18%	16%	12%	13%	13%	17%	17%	16%	19%	18%	16%	13%	14%	14%	14%	11%	6%	8%	9%	
APTT	42%	44%	47%	47%	46%	47%	44%	47%	46%	46%	47%	49%	49%	51%	49%	49%	50%	47%	50%	49%	49%	52%
PT	42%	44%	47%	46%	45%	46%	44%	47%	46%	46%	47%	50%	49%	51%	48%	49%	52%	48%	51%	50%	49%	52%
INR	70%	67%	69%	69%	68%	68%	69%	71%	70%	70%	72%	77%	77%	77%	74%	76%	76%	76%	78%	77%	78%	78%
Fibrinogen	65%	44%	48%	48%	46%	47%	48%	48%	47%	46%	47%	48%	45%	51%	46%	43%	44%	47%	49%	49%	52%	52%
Ferritin	75%	64%	62%	60%	56%	56%	56%	58%	58%	56%	59%	58%	63%	61%	57%	63%	63%	67%	67%	64%	65%	59%
D-dimer	61%	48%	52%	48%	46%	45%	48%	46%	49%	44%	46%	47%	43%	45%	42%	45%	43%	44%	43%	46%	39%	
Triglycerides	89%	78%	79%	77%	77%	78%	76%	78%	78%	76%	76%	73%	72%	79%	71%	77%	74%	74%	77%	74%	74%	73%
CRP	39%	13%	11%	9%	10%	8%	9%	8%	8%	9%	7%	9%	8%	8%	7%	7%	9%	8%	8%	5%	7%	
Procalcitonin	95%	84%	85%	82%	82%	80%	80%	81%	81%	78%	80%	78%	79%	80%	75%	78%	74%	77%	77%	70%	77%	71%
High sensitivity Troponin	78%	69%	72%	73%	69%	70%	73%	71%	70%	68%	65%	65%	66%	62%	61%	63%	61%	63%	61%	62%	54%	50%
NT Pro BNP	96%	94%	96%	97%	96%	96%	96%	97%	98%	97%	98%	97%	97%	97%	98%	95%	97%	97%	98%	97%	98%	98%

Figure S1 – Adjunctive interventions application

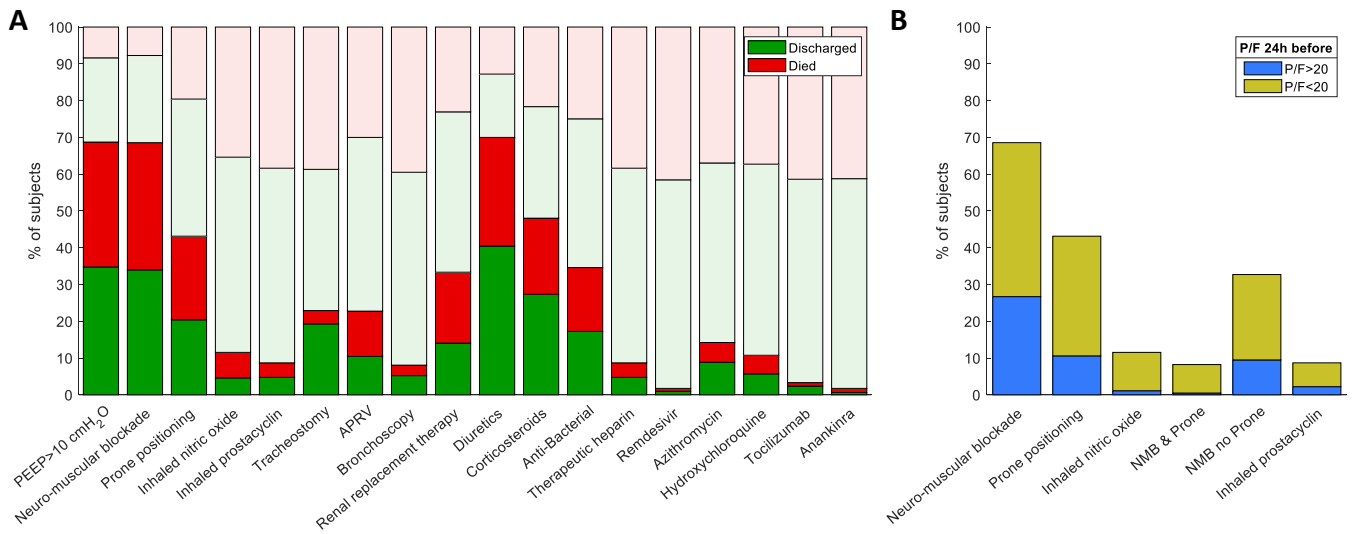


Figure S2 – Time-series comparison between resolvers and non-resolvers

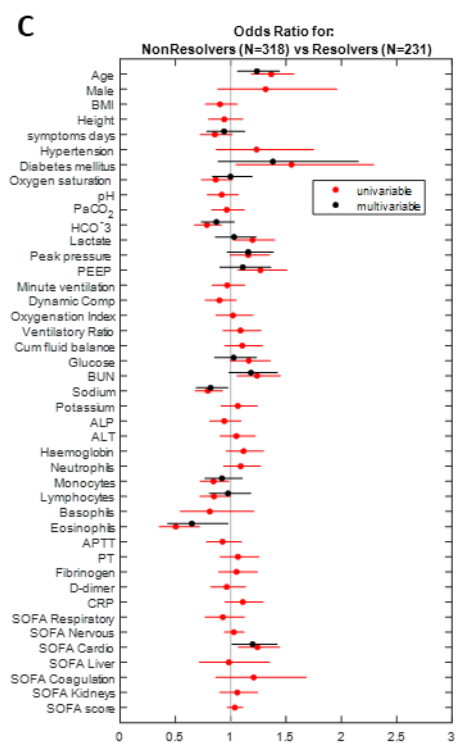
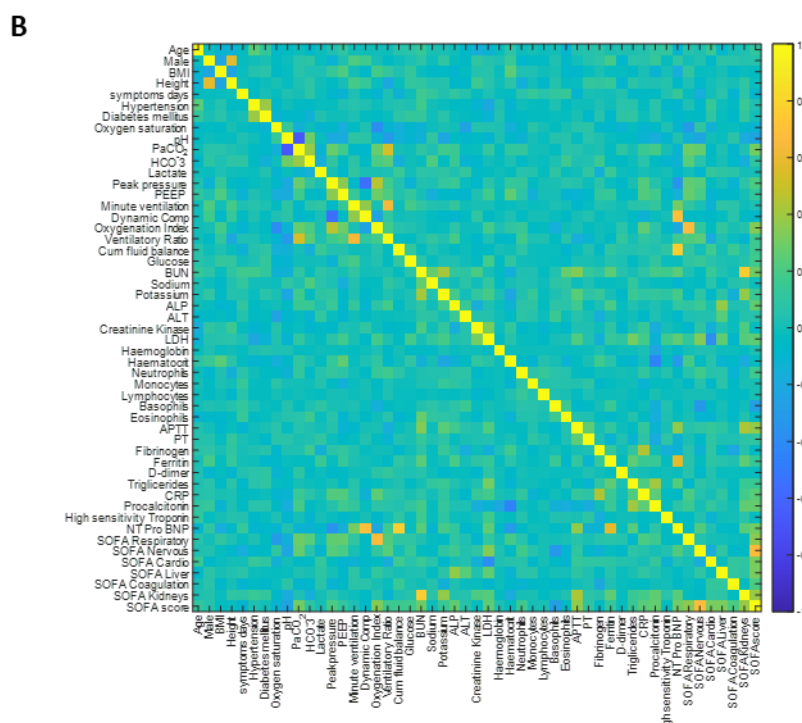
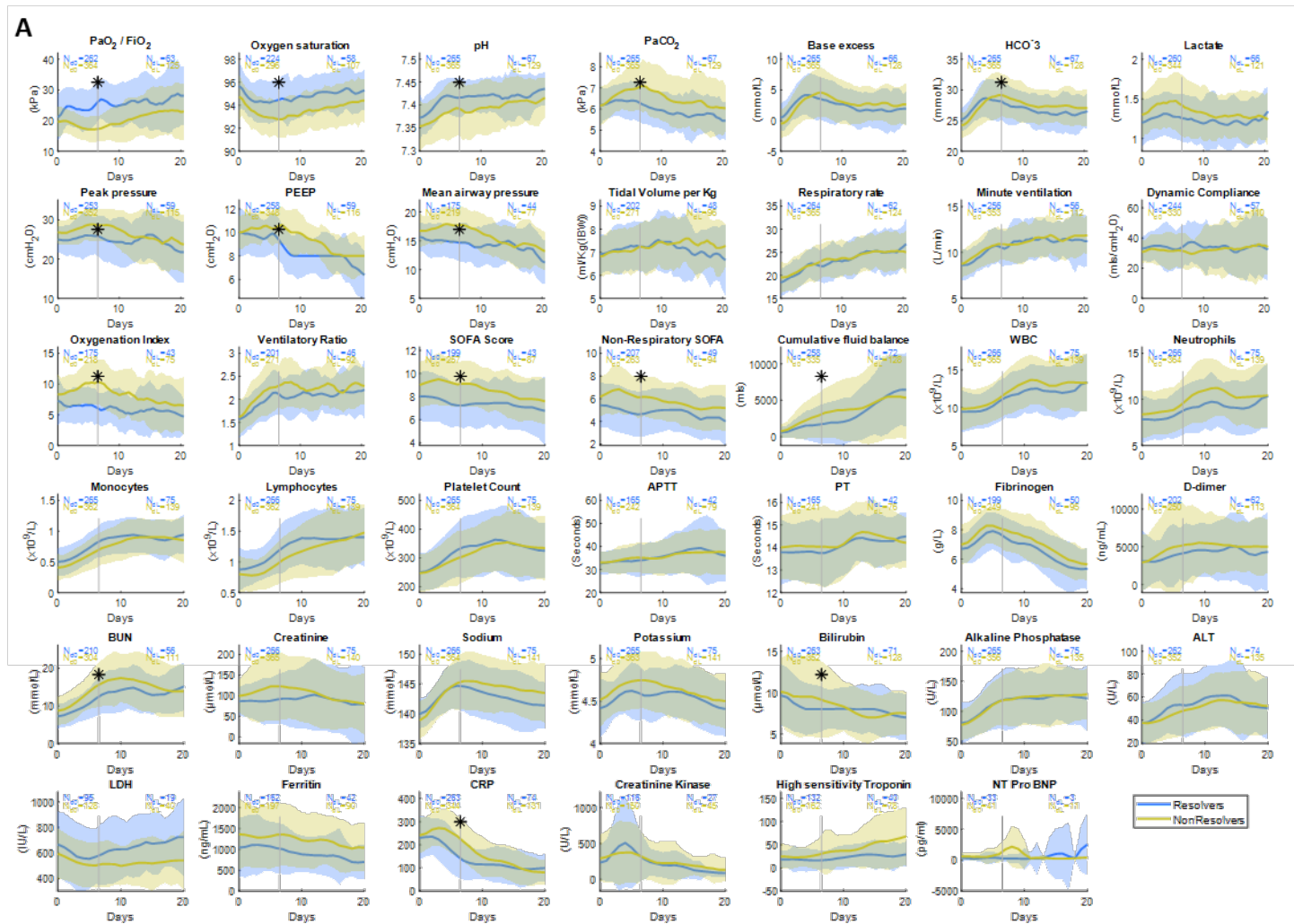


Figure S3 – Time-series comparison between prone responders and non-responders

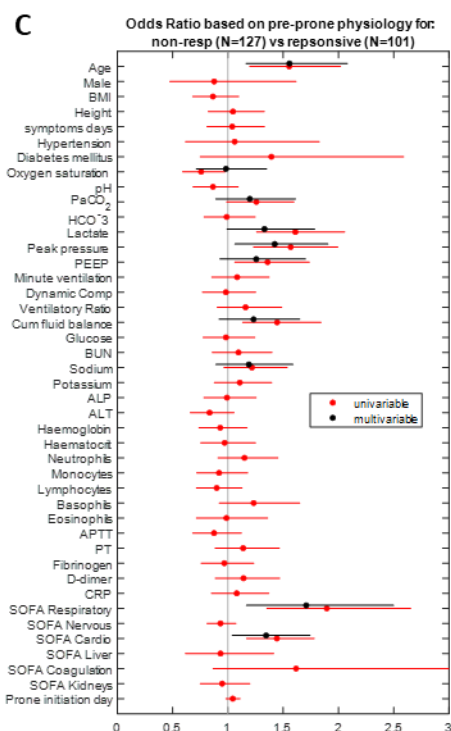
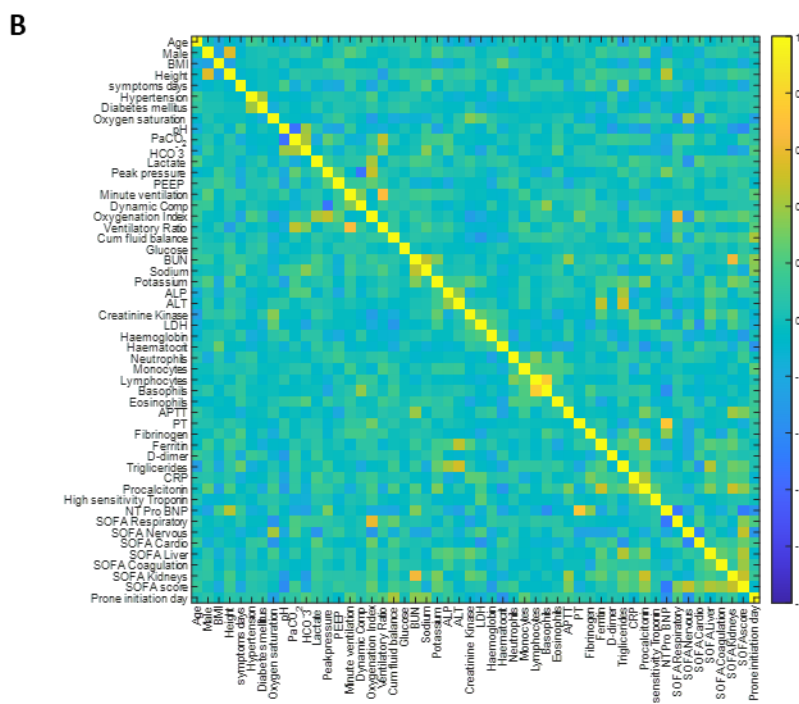
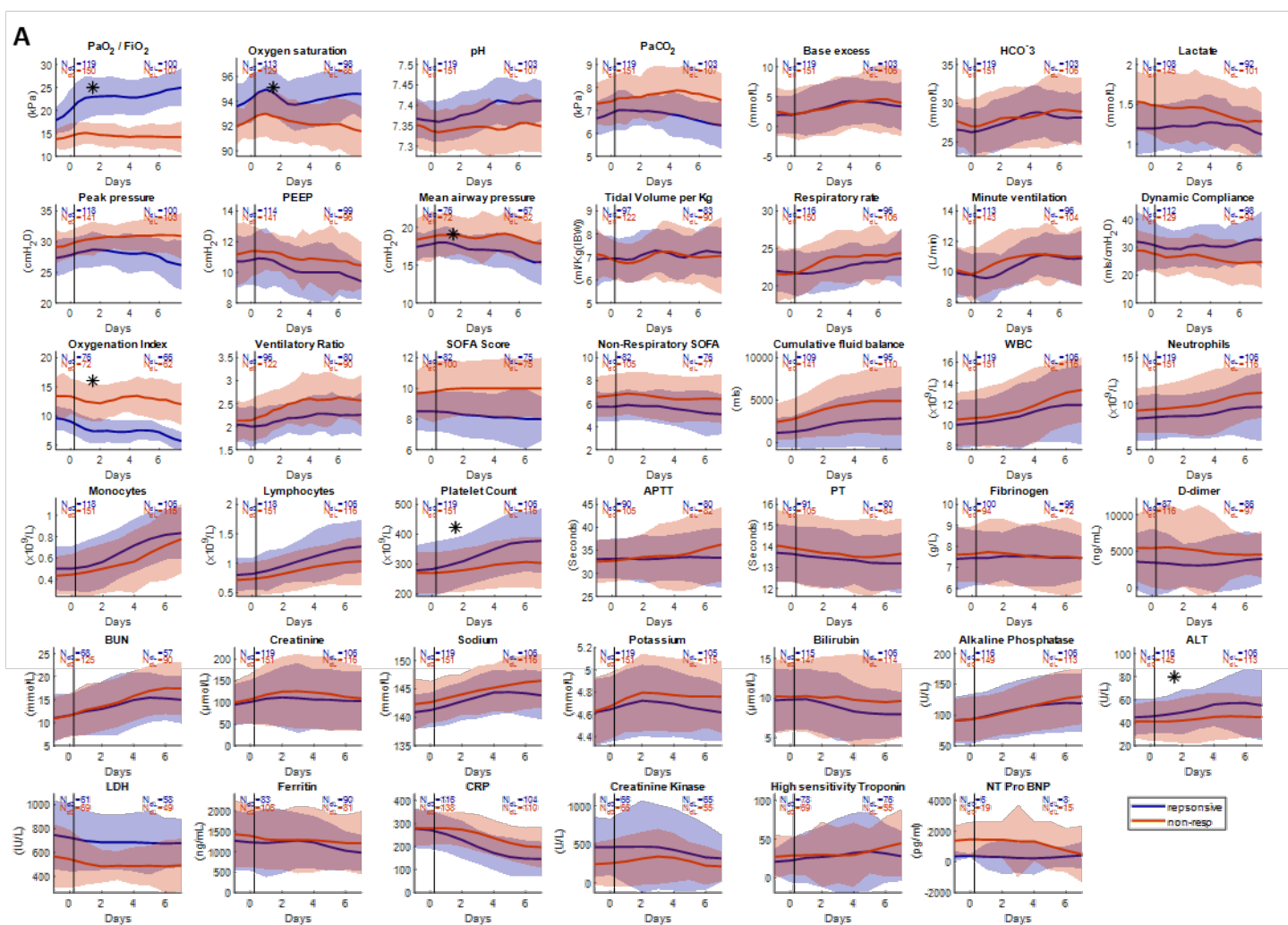
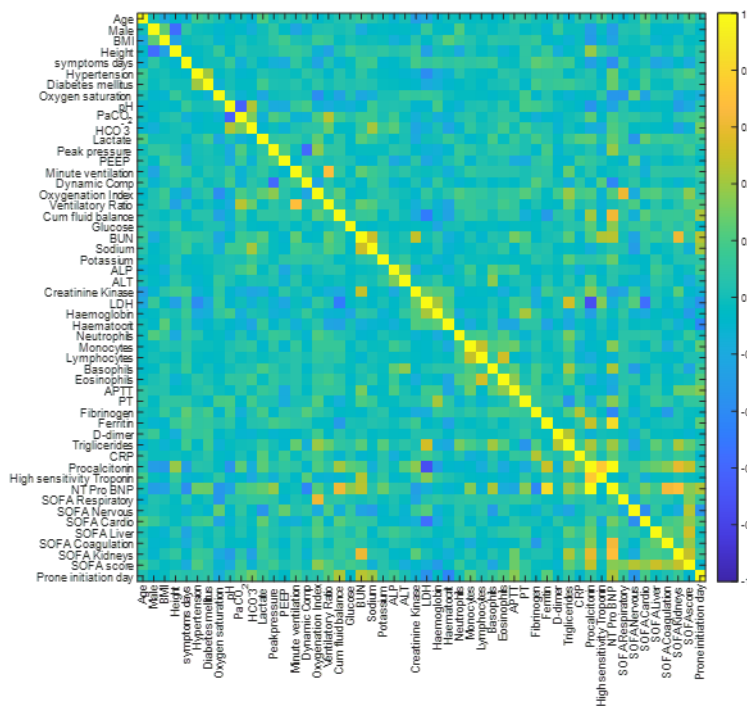


Figure S4 – Logistic Regression for prone response based on post-prone physiology

A



B

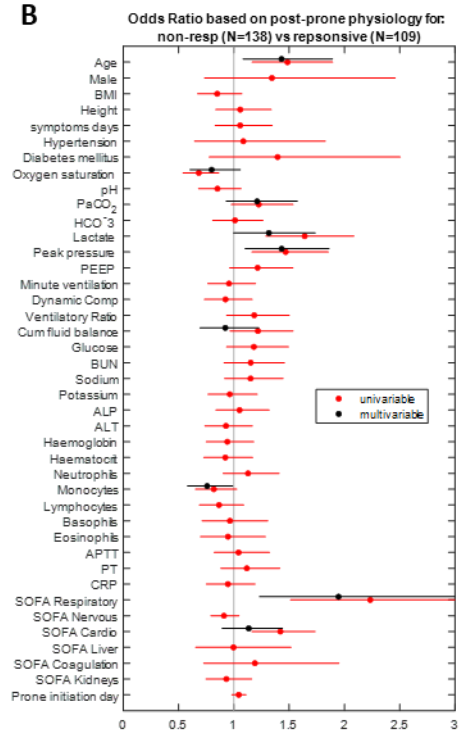


Figure S5 – Time-series comparison between admission ARDS severities

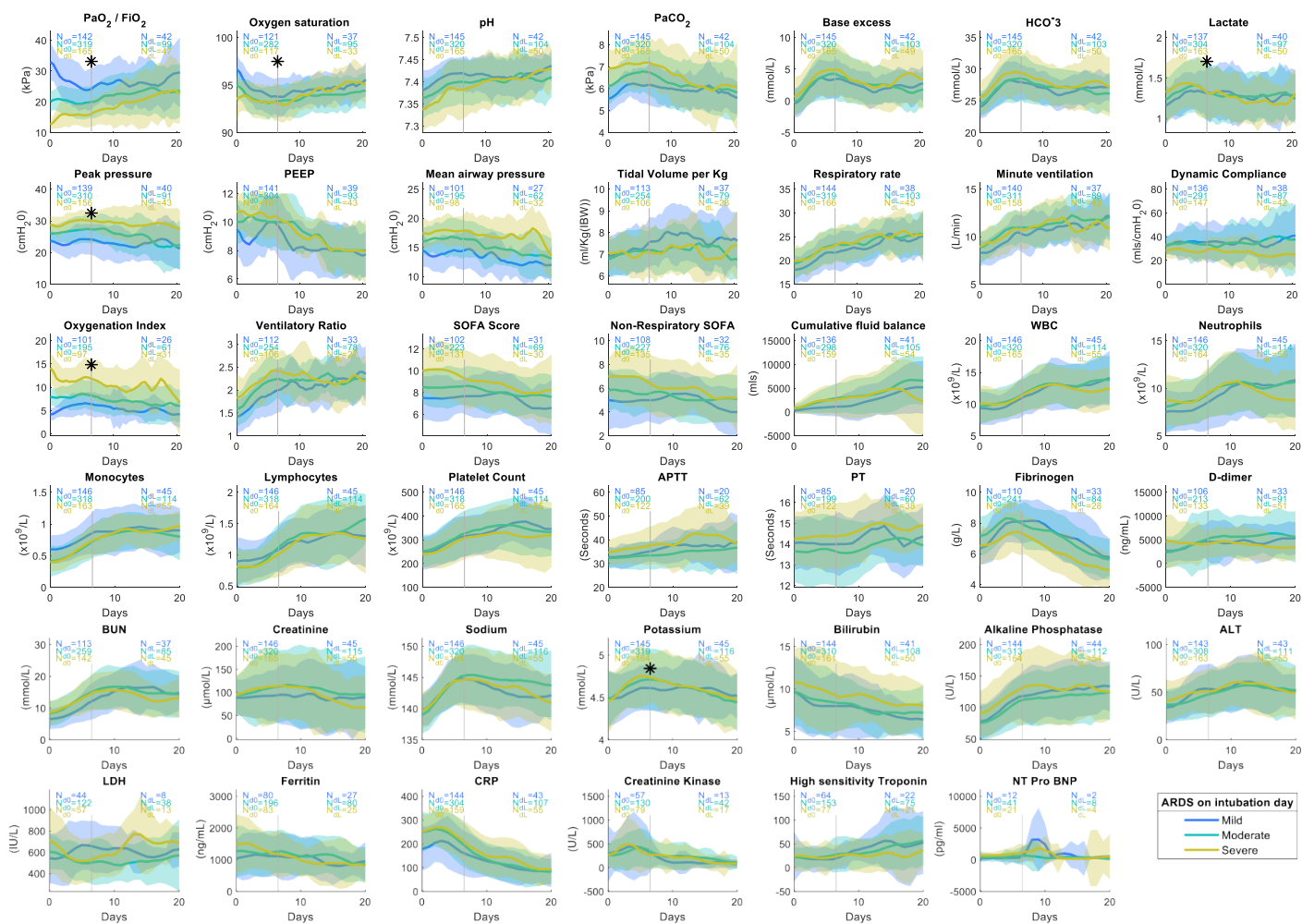


Figure S6 – Time series comparison between outcome groups

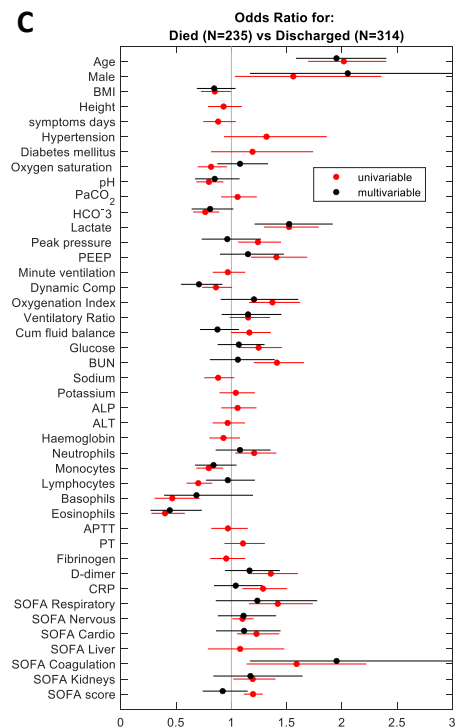
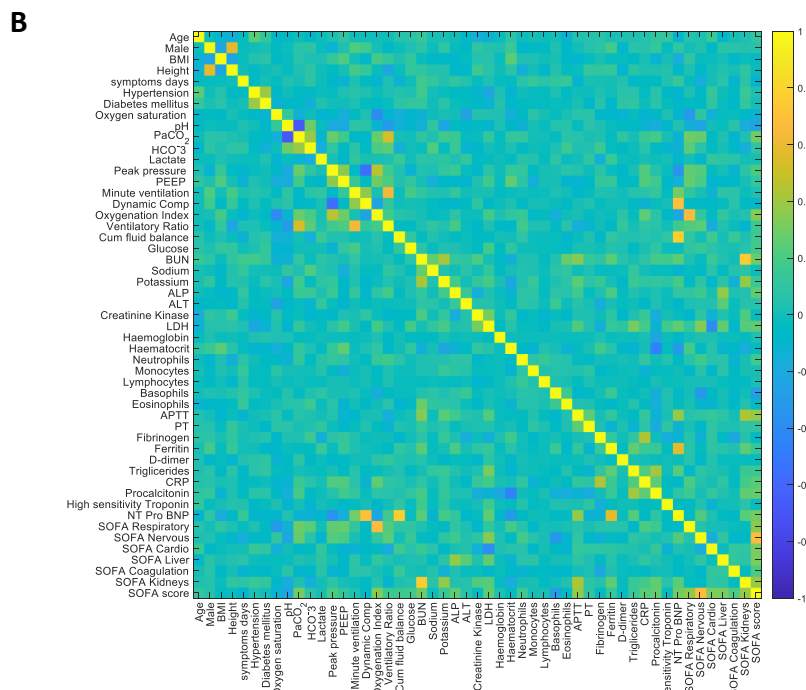
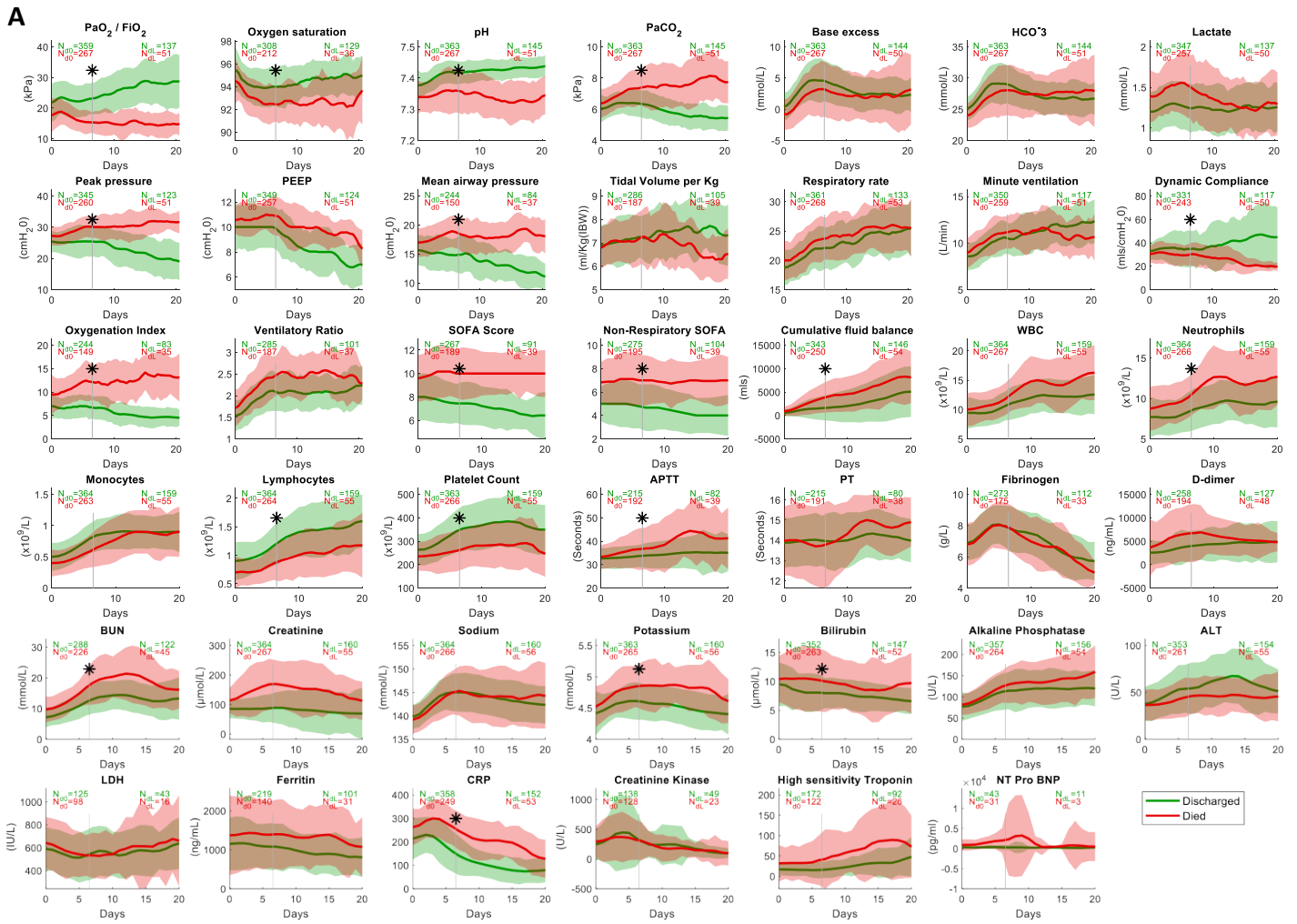


Figure S7 – Site variation of application of interventions

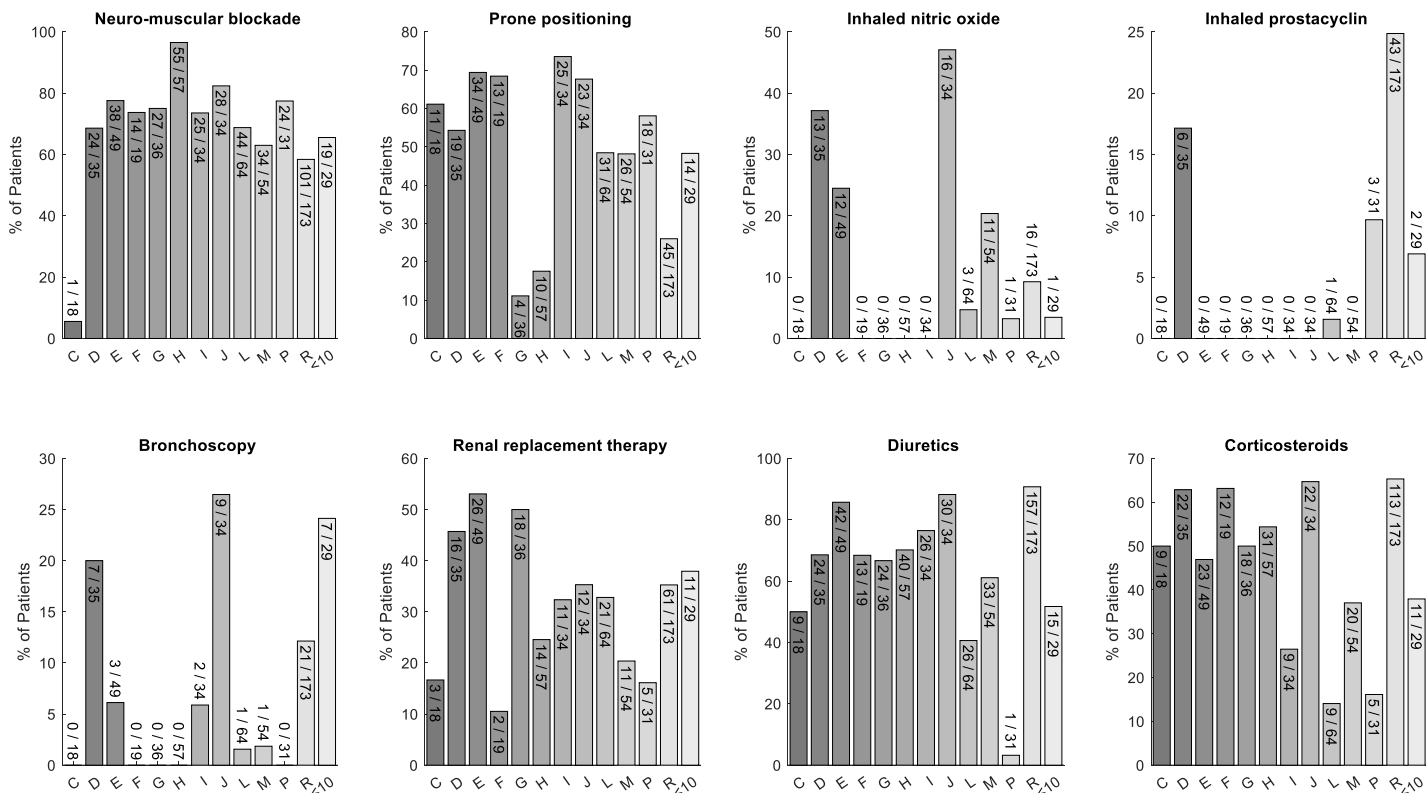


Figure S8 – Oxygenation Index dependency on P/F ratio

