

1 **Article summary line:** Several commercially available SARS-CoV-2 ELISAs show limited  
2 specificity when applied to serum panels of African origin.

3

4 **Running title:** SARS-CoV-2 IgG ELISA specificity

5

6 **Keywords:** SARS-CoV-2, seroepidemiologic studies, immunoglobulin G, Enzyme-Linked  
7 Immunosorbent Assay, specificity, Africa

8

9 **Title:**

10 **Limited specificity of commercially available SARS-CoV-2 IgG ELISAs in serum**  
11 **samples of African origin**

12

13 **Authors:**

14 Petra Emmerich, Carolin Murawski, Christa Ehmen, Ronald von Possel, Neele Pekarek, Lisa  
15 Oestereich, Sophie Duraffour, Meike Pahlmann, Nicole Struck, Daniel Eibach, Ralf  
16 Krumkamp, John Amuasi, Oumou Maiga-Ascofare, Raphael Rakotozandrindrainy, Danny  
17 Asogun, Yemisi Ighodalo, Simone Kann, Jürgen May, Egbert Tannich, Christina  
18 Deschermeier

19

20 **Affiliations:**

21 Bernhard Nocht Institute for Tropical Medicine, Hamburg, Germany (P. Emmerich,  
22 C. Murawski, C. Ehmen, R. von Possel, N. Pekarek, L. Oestereich, S. Duraffour,  
23 M. Pahlmann, N. Struck, D. Eibach, R. Krumkamp, J. May, E. Tannich, C. Deschermeier)  
24 University of Rostock, Rostock, Germany (P. Emmerich)  
25 German Center for Infection Research (DZIF), Hamburg – Lübeck – Borstel – Riems,  
26 Germany (L. Oestereich, S. Duraffour, M. Pahlmann, N. Struck, D. Eibach, R. Krumkamp,  
27 O. Maiga-Ascofare)

**NOTE:** This preprint reports new research that has not been certified by peer review and should not be used to guide clinical practice.

28 Kumasi Centre for Collaborative Research in Tropical Medicine, Kumasi, Ghana (J. Amuasi,  
29 O. Maiga-Ascofare)  
30 University of Antananarivo, Antananarivo, Madagascar (R. Rakotozandrindrainy)  
31 Irrua Specialist Teaching Hospital, Irrua, Nigeria (D. Asogun, Y. Ighodalo)  
32 Medical Mission Institute, Würzburg, Germany (S. Kann)  
33 National Reference Centre for Tropical Pathogens, Hamburg, Germany (E. Tannich)  
34  
35 **Corresponding author:** Christina Deschermeier  
36 **Mailing address:** Bernhard Nocht Institute for Tropical Medicine, Bernhard-Nocht-Str. 74,  
37 20359 Hamburg  
38 **Email address:** [descherm@bnitm.de](mailto:descherm@bnitm.de)  
39 **Phone number:** +49 (40) 42818-438  
40 **ORCID ID:** 0000-0002-8309-7877

41 **ABSTRACT**

42 Specific serological tests are mandatory for reliable SARS-CoV-2 seroprevalence studies but  
43 assay specificity may vary considerably between populations due to interference of immune  
44 responses to other pathogens. Here, we assess the false positive rates obtained with four  
45 commercially available IgG ELISAs in serum/plasma panels originating from three different  
46 African countries.

47  
48 By November 1<sup>st</sup> 2020, 1,324,258 laboratory-confirmed SARS-CoV-2 infections and 29,785  
49 deaths caused by COVID-19 have been reported from the WHO Africa region (1). Currently,  
50 community transmission is observed in almost all African countries including Tanzania,  
51 Ghana, Madagascar, Nigeria, Kenya, South Sudan, Burundi, and Uganda (1). To correctly  
52 determine the actual exposure of the population to SARS-CoV-2 and to draw reliable  
53 conclusions on morbidity and case fatality rates, highly sensitive and specific serological  
54 tests are mandatory.

55 Up to now, a plethora of ELISA tests for detection of anti-SARS-Cov-2 antibodies has been  
56 developed and commercialized (2, 3). Although performance data for several of these assays  
57 have been rapidly communicated by different laboratories (4-7), still only few reports are  
58 available on the applicability of these tests on African serum panels (8, 9). Here, assay  
59 specificity may be challenged by previous or current infections with other endemic pathogens  
60 like other coronaviruses (10), Dengue virus (11), or *Plasmodium spp.* (12).

61

62 **THE STUDY**

63 To assess the specificities of commercially available SARS-CoV-2 IgG ELISA tests in sample  
64 panels of different origin, *a priori* SARS-CoV-2 IgG negative sample panels (**Table 1**)  
65 collected from symptom-free donors before 2019 in Africa (Ghana, Madagascar, Nigeria),  
66 South America (Colombia) and Europe (Germany) were analyzed with the Euroimmun Anti-  
67 SARS-CoV-2-NCP IgG ELISA (Euroimmun, Germany), the Euroimmun Anti-SARS-CoV-2  
68 IgG ELISA (Euroimmun, Germany), the EDI<sup>TM</sup> Novel Coronavirus COVID-19 IgG ELISA

69 (Epitope Diagnostics, US), and the Mikrogen *recomWell* SARS-CoV-2 IgG ELISA (Mikrogen,  
70 Germany) (**Appendix Table 1**). Assays were performed and evaluated according to the  
71 manufacturers' instructions.

72 While IgG ELISA specificities were good to excellent for pre-COVID-19 sample panels  
73 originating from Colombia, Madagascar, and Germany, increased false positive rates were  
74 observed in *a priori* SARS-CoV-2 IgG negative sera from Ghana and Nigeria (**Figure 1**,  
75 **Table 2**). Thereby, the index values obtained with the Euroimmun NCP IgG ELISA and the  
76 EDI<sup>TM</sup> IgG ELISA, both employing recombinant nucleocapsid protein (NCP) as antigen,  
77 showed a clear correlation (**Appendix Figure 1A, 1C, 1E, 1G**), while only 15 samples  
78 (Ghana: n=7, Nigeria: n=8), were concordantly classified as positive by both the NCP-based  
79 and the spike/S1-based Euroimmun IgG ELISA (**Appendix Figure 1B, 1D, 1F, 1H, Figure**  
80 **2A**). For all 15 sera, IgG immunofluorescence testing using SARS-CoV-2-infected Vero cells  
81 (13) was negative, and no or only weak inhibition of receptor binding was observed in a  
82 SARS-CoV-2 surrogate virus neutralizing test (sVNT, Genscript, US) (**Figure 2A**).

83 One possible cause of the observed limited specificity of SARS-CoV-2 IgG ELISAs may be  
84 cross-reaction with antibodies elicited by previous infections with other coronaviruses. To  
85 investigate this possibility, we assayed the complete sample panel for IgG antibodies binding  
86 to the C-terminal dimerization domains of the four common cold coronavirus NCPs using an  
87 in-house IgG ELISA protocol ((14), **Appendix Methods, Figure 2B-E**).

88 As can be expected due to the worldwide occurrence of the common cold coronaviruses, IgG  
89 antibodies interacting with the C-terminal domains of OC43, HKU1, NL63, and 229E NCP  
90 were detected in considerable fractions of all sample panels, including those for which good  
91 or excellent SARS-CoV-2 ELISA specificity has been observed (**Figure 2B-E**). Nevertheless,  
92 the most challenging sample panel originating from Nigerian donors displayed the by far  
93 highest percentage of OC43-ELISA-reactive samples (43.3 %, **Figure 2B**). In a line blot  
94 (Euroline Anti-SARS-CoV-2 Profile IgG, Euroimmun), all 15 serum samples from Ghana  
95 (n=7) and Nigeria (n=8) showing up positive in both the spike/S1-based and the NCP-based  
96 Euroimmun IgG ELISA generated strong signals with OC43 NCP (**Figure 2A**). In addition,

97 antibodies binding to SARS-CoV-2 spike S2 were found in 6/7 Ghanaian and 3/8 Nigerian  
98 samples (**Figure 2A**). 7/8 of the Nigerian sera, but only 2/7 of the Ghanaians samples tested  
99 positive in the in-house OC43 ELISA employing a truncated NCP lacking the N-terminal  
100 domain as antigen. Therefore, at least some of the observed false positive signals could be  
101 due to previous infections with other coronaviruses sharing B cell epitopes with both OC43  
102 and SARS-CoV-2.

103 Recently, Lustig *et al.* (11) reported false positive results of the Euroimmun Anti-SARS-CoV-  
104 2 IgA and IgG ELISAs in sera originating from donors with acute or past dengue virus  
105 (DENV) infection. In our study, 29 (21.6%) of the 134 Colombian donors tested positive in the  
106 SD Bioline Dengue Duo IgG Rapid Test (Alere/Abbott, USA), indicating a high titer of anti-  
107 DENV IgG antibodies (15). Indeed, two of the three Colombian sera testing positive in the  
108 spike-based Euroimmun Anti-SARS-CoV-2 ELISA (but negative in the nucleoprotein-based  
109 SARS-CoV-2 ELISAs) belonged to this subgroup.

110 In addition, hypergammaglobulinemia resulting from polyclonal B-cell activation induced by  
111 pathogens like plasmodium can challenge assay specificity as has already been shown for a  
112 commercially available ZIKV IgG ELISA (12). Information about *Plasmodium* parasitemia  
113 was only available for one of the Ghanaian (55/150 samples with microscopically detectable  
114 parasitemia) and the Madagascan (4/167 Plasmodium-PCR positive samples) panels. Here,  
115 a reduced specificity in Ghanaian parasitemic vs. non-parasitemic samples was observed for  
116 the Euroimmun Anti-SARS-CoV-2-NCP-IgG ELISA (83.6% (95% CI: 71.5%-91.4%) vs.  
117 94.7% (95% CI: 88.0%-98.0%),  $p = 0.0387$ ), but not for the other SARS-CoV-2 IgG ELISAs  
118 (**Appendix Table 2**).

119

## 120 **LIMITATIONS OF THE STUDY**

121 Our study has some major limitations that have to be acknowledged when interpreting the  
122 presented data. First of all, sample panels originating from previous studies with different  
123 scientific objectives had to be used for the analysis; therefore, the panels do not reflect  
124 representative cross-sections of the respective countries' populations and also comparability

125 between sample panels is limited due to differences in age and sex of donors. Although in  
126 total 600 African samples have been analyzed, the number of samples per country giving  
127 rise to false positive SARS-CoV-2 IgG assay results is still relatively small, impeding  
128 statistical analyses. Furthermore, limited accessible sample volumes prevented us from  
129 performing material-intensive assays as the SD Bioline Dengue Duo IgG Rapid Test or  
130 *Plasmodium*-specific RT-PCR for the complete panel.

131

## 132 **CONCLUSIONS**

133 In accordance with evaluation studies recently published by other authors (4-6), the  
134 commercially available SARS-CoV-2 IgG ELISAs displayed a good to excellent specificity  
135 when applied to serum panels originating from European donors. In contrast, significantly  
136 increased false positive rates were observed in African pre-COVID-19 serum panels  
137 originating from Ghana and Nigeria. A similar result has been found recently for serum  
138 samples from febrile patients from Benin (9). Possible causes for this observation are cross-  
139 reactive antibodies elicited by previous infections with endemic viruses (in particular other  
140 coronaviruses), polyclonal B-cell activation induced e.g. by plasmodium infection, or a  
141 combination thereof.

142 Based on these findings, the following recommendations should be considered when  
143 planning and performing SARS-CoV-2 seroprevalence studies (not only) in Africa: 1) Prior to  
144 performance of seroprevalence studies, carefully assess background/false positive signals  
145 obtained with the chosen serological test(s) in the target population (using *a priori* SARS-  
146 CoV-2 IgG negative serum samples which were stocked before 2019). Be aware of  
147 potentially interfering/cross-reacting endemic pathogens and carefully interpret SARS-CoV-2  
148 IgG test results in this context. 2) If necessary, combine information from two independent  
149 serological tests employing different antigens. 3) Re-evaluate samples generating a positive  
150 ELISA result by SARS-CoV-2 neutralization testing.

151 Further studies will be necessary to assess sensitivity of the commercially available assays  
152 in detecting anti-SARS-CoV2 IgG antibodies induced by SARS-CoV-2 infection in African  
153 COVID-19 patients and to optimize assay specificity in sera from African donors.

154

#### 155 **ACKNOWLEDGMENTS**

156 The authors thank M. Panning for providing common cold coronavirus RNAs. J. Hansen is  
157 thanked for expert technical assistance.

158

#### 159 **FUNDING**

160 The study was supported by the German Federal Ministry of Education and Research (Grant  
161 no. 01KI20210), the German Research Foundation (DFG, GU 883/4-1 and GU 883/5-1), by  
162 the German Federal Ministry of Health through support of the WHO Collaborating Centre for  
163 Arboviruses and Hemorrhagic Fever Viruses at BNITM (agreement ZMV I1-2517WHO005),  
164 through the Global Health Protection Program (agreement ZMV I1-2517GHP-704), and  
165 through the COVID support agreement ZMVI1-2520COR001. Collection of Colombian serum  
166 samples was supported by the European Regional Development Fund (ERDF), project  
167 number BWF/H/52228/2012/13.10.10-1/3.4. The funders had no role in study design, data  
168 collection and analysis, decision to publish, or preparation of the manuscript.

169

#### 170 **AUTHOR BIOGRAPHY**

171 Dr. Emmerich is a laboratory group leader at the Bernhard Nocht Institute for Tropical  
172 Medicine in Hamburg, Germany. Her research is focused on diagnostics of viral infectious  
173 diseases.

174 **REFERENCES**

- 175 1. WHO. COVID-19 Weekly Epidemiological Update, 01Nov2020
- 176 2. FIND. <https://www.finddx.org/covid-19/sarscov2-eval-immuno/>
- 177 3. University JH. [https://www.centerforhealthsecurity.org/resources/COVID-](https://www.centerforhealthsecurity.org/resources/COVID-19/serology/Serology-based-tests-for-COVID-19.html)
- 178 [19/serology/Serology-based-tests-for-COVID-19.html](https://www.centerforhealthsecurity.org/resources/COVID-19/serology/Serology-based-tests-for-COVID-19.html). 2020.
- 179 4. Geurts van Kessel CH, Okba NMA, Igloi Z, Bogers S, Embregts CWE, Laksono BM,  
180 et al. An evaluation of COVID-19 serological assays informs future diagnostics and  
181 exposure assessment. *Nature communications*. 2020;11(1):3436.
- 182 5. Kruttgen A, Cornelissen CG, Dreher M, Hornef M, Imohl M, Kleines M. Comparison of  
183 four new commercial serologic assays for determination of SARS-CoV-2 IgG. *Journal*  
184 *of clinical virology : the official publication of the Pan American Society for Clinical*  
185 *Virology*. 2020;128:104394.
- 186 6. Pflüger LS, Bannasch JH, Brehm TT, Pfefferle S, Hoffmann A, Nörz D., et al. Clinical  
187 evaluation of five different automated SARS-CoV-2 serology assays in a cohort of  
188 hospitalized COVID-19 patients. *Journal of Clinical Virology*. 2020.
- 189 7. Weidner L, Gansdorfer S, Unterweger S, Weseslindtner L, Drexler C, Farcet M, et al.  
190 Quantification of SARS-CoV-2 antibodies with eight commercially available  
191 immunoassays. *Journal of clinical virology : the official publication of the Pan*  
192 *American Society for Clinical Virology*. 2020;129:104540.
- 193 8. Chibwana MG, Jere KC, Kamn'gona R, Mandolo J, Katunga-Phiri V, Tembo D, et al.  
194 High SARS-CoV-2 seroprevalence in health care workers but relatively low numbers  
195 of deaths in urban Malawi. *MedRxiv preprint*,  
196 <https://doi.org/10.1101/2020.07.30.20164970>. 2020.
- 197 9. Yadouleton A, Sander A, Moreira-Soto A, Tchibozo C, Hounkanrin G, Badou Y, et al.  
198 Limited specificity of serologic tests for SARS-CoV-2 antibody detection, Benin,  
199 Western Africa. *medRxiv preprint*, <https://doi.org/10.1101/2020.06.29.20140749>.  
200 2020.



- 201 10. Tso FY, Lidenge SJ, Pena PB, Clegg AA, Ngowi JR, Mwaiselage J., et al. High  
202 prevalence of pre-existing serological cross-reactivity against SARS-CoV-2 in sub-  
203 Saharan Africa. *International Journal of Infectious Diseases*.  
204 <https://doi.org/10.1016/j.ijid.2020.10.104>. 2020
- 205 11. Lustig Y, Keler S, Kolodny R, Ben-Tal N, Atias-Varon D, Shlush E, et al. Potential  
206 antigenic cross-reactivity between SARS-CoV-2 and Dengue viruses. *Clin Infect Dis*.  
207 2020.
- 208 12. Van Esbroeck M, Meersman K, Michiels J, Arien KK, Van den Bossche D. Letter to  
209 the editor: Specificity of Zika virus ELISA: interference with malaria. *Euro surveillance*  
210 : bulletin Europeen sur les maladies transmissibles = European communicable  
211 disease bulletin. 2016;21(21).
- 212 13. Reisinger EC, von Possel R, Warnke P, Geerdes-Fenge HF, Hemmer CJ, Pfefferle S,  
213 et al. Screening of Mothers in a COVID-19 Low-Prevalence Region: Determination of  
214 SARS-CoV-2 Antibodies in 401 Mothers from Rostock by ELISA and Confirmation by  
215 Immunofluorescence. *Deutsche medizinische Wochenschrift*. 2020.
- 216 14. Schmitz H, Gabriel M, Emmerich P. Specific detection of antibodies to different  
217 flaviviruses using a new immune complex ELISA. *Med Microbiol Immunol*.  
218 2011;200(4):233-9.
- 219 15. Blessmann J, Winkelmann Y, Keoviengkhone L, Sopraseuth V, Kann S, Hansen J, et  
220 al. Assessment of diagnostic and analytic performance of the SD Bioline Dengue Duo  
221 test for dengue virus (DENV) infections in an endemic area (Savannakhet province,  
222 Lao People's Democratic Republic). *PLoS One*. 2020;15(3):e0230337.  
223

224 **TABLES**

225

226 **Table 1. Sample panels used in the study**

| serum panel                                      | Ghana 1       | Ghana 2                                 | Madagascar                                 | Nigeria        | Colombia                                    | Germany          |
|--|---------------|---|--|----------------|---|------------------|
| number   | 150           | 133                                     | 167  | 150            | 134   | 148              |
| sampling year                                    | 2014 - 2015   | 1999                                    | 2010                                       | 2018           | 2014  | 2004 - 2015      |
| sample type                                      | serum         | serum                                   | plasma                                     | serum          | serum                                       | serum            |
| donors   | children      | teens, adults                           | pregnant women                             | adults         | adults                                      | adults           |
| age (median, IQR)                                | 6 (3 – 7)     | 22 (16 – 45) *                          | 23 (20 – 30)                               | 41 (30 – 58)** | 27 (23 – 36)                                | 39 (28 – 48)***  |
| sex m/f (n (%))                                  | 72/78 (48/52) | 61/72 (46/54)                           | 0/167 (0/100)                              | 71/79 (47/53)  | 55/79 (41/59)                               | 79/35 (69/31)*** |
| sampling site                                    | Agogo         | villages in the central region of Ghana | coastal (n=89) and highland (n=68) regions | Irrua          | Valledupar                                  | Hamburg          |
| <i>Plasmodium spp.</i> positive (n (%))          | 55 (37.7 %) # | not tested                              | 4 (2.4%) #                                 | not tested     | not tested; no previous infections reported | not tested       |
| SD Bioline Dengue Duo Rapid Test IgG pos (n (%)) | not tested    | not tested                              | not tested                                 | not tested     | 29 (21.6%)                                  | not tested       |

227

228 M: male, f: female, IQR: interquartile range.

229 Collection of samples has been approved by the Ethics Committees of the Kwame Nkrumah  
 230 University of Science and Technology (Kumasi/Ghana), the Comité d'éthique de la Vice  
 231 Primature Chargée de la Santé Publique (Antananarivo/Madagascar), the Irrua Specialist  
 232 Teaching Hospital (Irrua/Nigeria), the Hospital Rosario Pumarejo de Lopez  
 233 (Valledupar/Colombia), and the Medical Association Hamburg/Germany. All studies complied  
 234 with the Declaration of Helsinki. Written informed consent was obtained from all individuals  
 235 or, in case of minors, from parents or legal guardians before enrollment. Data privacy  
 236 protection was guaranteed by anonymization of samples.

237 \*n=89 (exact age information not available for 43 donors (all 43: age ≥ 18 years))

238 \*\*n=149 (age information not available for one donor)

239 \*\*\*n=114 (sex and exact age information not available for 34 donors (all 34: age ≥ 18 years))

240 #Parasitemic samples were identified by microscopy (Ghana) and plasmodium-specific RT-  
 241 PCR (Madagascar), respectively.

242

243

244

245 **Table 2. SARS-CoV-2 IgG ELISA specificities**

|                         |                      |    |     | Euroimmun Anti-SARS-CoV-2-NCP-ELISA IgG |    |     | Euroimmun Anti-SARS-CoV-2-ELISA IgG |   |     | EDI™ Novel Coronavirus COVID-19 IgG ELISA kit |    |     | Mikrogen recomWell SARS-CoV-2 IgG |    |     |
|-------------------------|----------------------|----|-----|---|----|-----|-------------------------------------|---|-----|---|----|-----|-----------------------------------|----|-----|
| Antigen                 |                      |    |     | NCP (modified)                          |    |     | Spike S1 domain                     |   |     | NCP   |    |     | NCP                               |    |     |
| Ghana 1<br>(n=150)      | pos                  | bl | neg | 14                                      | 11 | 125 | 12                                  | 1 | 137 | 24  | 17 | 109 | 7                                 | 7  | 136 |
|                         | specificity (95% CI) |    |     | 90.7 (84.8 – 94.5)                      |    |     | 92.0 (86.4 – 95.5)                  |   |     | 84.0 (77.2 – 89.1)                            |    |     | 95.3 (90.5 – 97.9)                |    |     |
| Ghana 2<br>(n=133)      | pos                  | bl | neg | 34                                      | 21 | 78  | 4                                   | 3 | 126 | 39  | 15 | 79  | 22                                | 10 | 101 |
|                         | specificity (95% CI) |    |     | 74.4 (66.4 – 81.1)                      |    |     | 97.0 (92.3 – 99.1)                  |   |     | 70.7 (62.4 – 77.8)                            |    |     | 83.5 (76.2 – 88.9)                |    |     |
| Madagas-<br>car (n=167) | pos                  | bl | neg | 2                                       | 4  | 161 | 3                                   | 0 | 164 | 11  | 10 | 146 | 1                                 | 3  | 163 |
|                         | specificity (95% CI) |    |     | 98.8 (95.5 – 99.9)                      |    |     | 98.2 (94.6 – 99.6)                  |   |     | 93.4 (88.5 – 96.4)                            |    |     | 99.4 (96.3 – 100.0)               |    |     |
| Nigeria<br>(n=150)      | pos                  | bl | neg | 42                                      | 18 | 90  | 14                                  | 7 | 129 | 91  | 19 | 40  | 26                                | 6  | 118 |
|                         | specificity (95% CI) |    |     | 72.0 (64.3 – 78.6)                      |    |     | 90.7 (84.8 – 94.5)                  |   |     | 39.3 (31.9 – 47.3)                            |    |     | 82.7 (75.8 – 87.9)                |    |     |
| Colombia<br>(n=134)     | pos                  | bl | neg | 0                                       | 1  | 133 | 3                                   | 1 | 130 | 1   | 3  | 130 | 3                                 | 2  | 129 |
|                         | specificity (95% CI) |    |     | 100.0 (96.6 – 100.0)                    |    |     | 97.8 (93.3 – 99.5)                  |   |     | 99.2 (95.5 – 100.0)                           |    |     | 97.8 (93.3 – 99.5)                |    |     |
| Germany<br>(n=148)      | pos                  | bl | neg | 0                                       | 4  | 144 | 2                                   | 3 | 143 | 2   | 1  | 145 | 6                                 | 0  | 142 |
|                         | specificity (95% CI) |    |     | 100.0 (97.0 – 100.0)                    |    |     | 98.6 (94.9 – 99.9)                  |   |     | 98.6 (94.9 – 99.9)                            |    |     | 95.9 (91.2 – 98.3)                |    |     |

246

247 pos/bl/neg: number of samples rated as positive (pos), borderline (bl), and negative (neg) by

248 the respective test. CI: confidence interval. For calculation of specificities, both negative and

249 borderline results were classified as “not positive”.

250 **FIGURE LEGENDS**

251

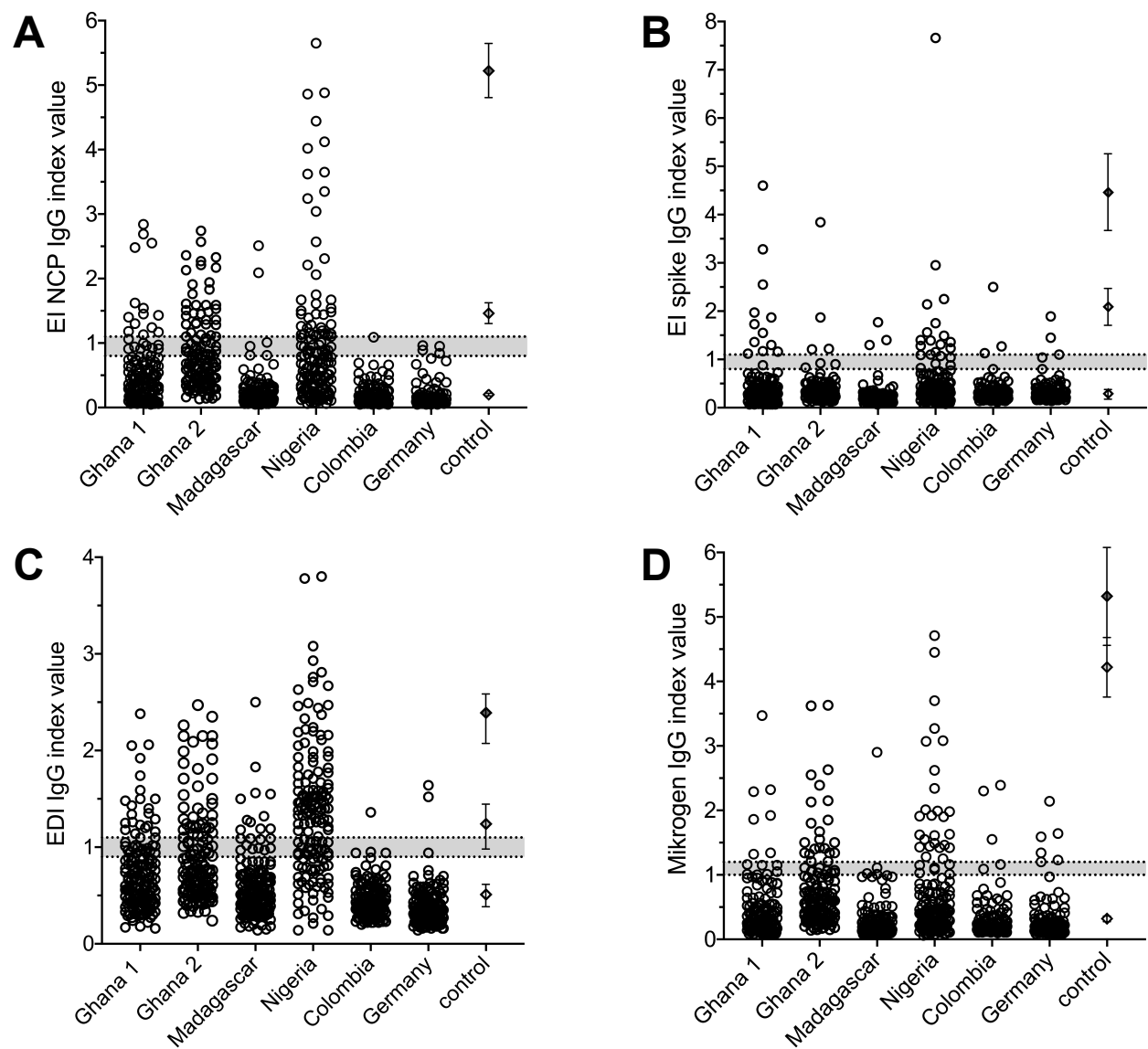
252 **Figure 1. SARS-CoV-2 IgG ELISA results.** Index values obtained for serum/plasma  
253 samples collected before 2019 in three different African countries (Ghana panel 1 (n=150),  
254 Ghana panel 2 (n=133), Madagascar (n=167), Nigeria (n=150)), Colombia (n=134), and  
255 Germany (n=148) with **(A)** the Euroimmun Anti-SARS-CoV-2-NCP IgG ELISA, **(B)** the  
256 Euroimmun Anti-SARS-CoV-2 IgG ELISA, **(C)** the EDI Novel Coronavirus COVID-19 IgG  
257 ELISA, and **(D)** the Mikrogen *recomWell* SARS-CoV-2 IgG ELISA. Dotted lines represent  
258 negative and positive cut-off values, respectively. Grey shading indicates index values rated  
259 as “borderline” according to the manufacturers’ instructions. Diamonds represent index  
260 values obtained for two IgG positive COVID-19 patient sera sampled on day 19 post onset of  
261 symptoms (dark grey: SARS-CoV-2 IgG IIFT titer 1:640, light grey: SARS-CoV-2 IgG IIFT  
262 titer 1:160) and one negative control serum; error bars represent standard deviation of n=13  
263 (A, C) and n=14 (B, D) independent measurements, respectively.

264

265 **Figure 2. (A) ELISA, sVNT and line blot results for sera testing positive in both the**  
266 **Euroimmun spike/S1- and NCP-based IgG ELISA.** Serum samples (Ghana 1 (G1): n=4,  
267 Ghana 2 (G2): n=3, Nigeria (N): n=8)) were tested using the SARS-CoV-2 sVNT (Genscript)  
268 and the Euroline Anti-SARS-CoV-2 Profile IgG (Euroimmun) according to the manufacturer’s  
269 instructions. Rating of index values (iv): Euroimmun ELISA: negative:  $iv < 0.8$ , borderline:  $0.8$   
270  $\leq iv < 1.1$ , positive:  $iv \geq 1.1$ ; Line blot: negative:  $iv < 0.6$ , borderline:  $0.6 \leq iv < 1.0$ , positive:  $iv$   
271  $\geq 1.0$ ; in-house ELISA: negative:  $iv < 0.7$ , borderline:  $0.7 \leq iv < 1.3$ , positive:  $iv \geq 1.3$ ; sVNT:  
272 negative: % inhibition  $< 20.0$ , borderline:  $20.0 \leq \% inh < 30.0$ , positive:  $\% inh \geq 30.0$ ; CTD: C-  
273 terminal domain; dark grey fields: positive; light grey fields: borderline. **(B) - (E) Common**  
274 **cold CoVs ELISA results.** Index values obtained for the sample panels from Ghana (1:  
275 n=150, 2: n=133), Madagascar (n=167), Nigeria (n=150), Colombia (n=134), and Germany  
276 (n=148) using an in-house IgG ELISA protocol employing the C-terminal dimerization domain  
277 of **(A)** OC43 NCP, **(B)** HKU1 NCP, **(C)** NL63 NCP, and **(D)** 229E NCP as antigen. Bold

278 numbers: % of samples for which an  $iv \geq 1.3$  was obtained, numbers in brackets: 95%  
279 confidence interval. Grey shading indicates ivs rated as “borderline” ( $0.7 \leq iv < 1.3$ ).

## Figure 1



## Figure 2

