

Pay-as-you-go LPG supports sustainable clean cooking in Kenyan informal urban settlement during economic downturn of a COVID-19 lockdown

Matthew Shupler¹, Mark O’Keefe², Elisa Puzzolo^{1,3}, Emily Nix¹, Rachel Anderson de Cuevas¹, James Mwitari⁴, Arthur Gohole⁴, Edna Sang⁵, Iva Čukić¹, Diana Menya⁵, Daniel Pope¹

1. Department of Public Health and Policy, University of Liverpool, Liverpool, United Kingdom
2. PayGo Energy Ltd., Nairobi, Kenya
3. Global LPG Partnership (GLPGP), 654 Madison Avenue, New York, United States
4. School of Public Health, Amref International University, Nairobi, Kenya
5. School of Public Health, Moi University, Eldoret, Kenya

PayGo Energy Path to Market

PayGo Energy piloted their first version of liquefied petroleum gas (LPG) metered technology and began recruiting customers in 2016 (Figure S1). All onboarded PayGo Energy customers began to be supplied with pay-as-you-go (PAYG) LPG metered technology (called “Goldcard meters”) in August 2017. In 2018, all PayGo Energy customers were using metered technology. In 2019, PayGo Energy began replacing the Goldcard meters with cylinder smart meters.

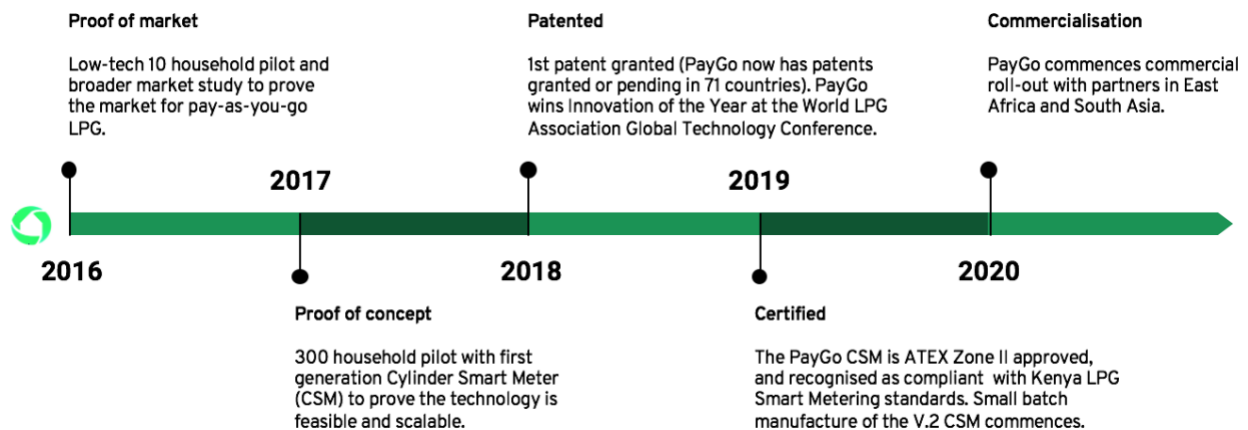


Figure S1. Timeline of PayGo Energy’s market entry

Comparison of Smart Meter Technology used by PayGo Energy

A sensitivity analysis (chi-square tests) was conducted with GoldCard metered data excluded to assess any changes to reported consumption statistics (Table S1). While monthly per capita PAYG LPG consumption among all PayGo Energy customers before lockdown was similar with that from customers only using cylinder smart meters (Goldcard meters excluded), PAYG LPG consumption per single cooking event was much lower with Goldcard metered data excluded (Table S1). This difference is due to rounding error as LPG usage data from Goldcard meters are

less accurate (nearest 0.2 kilograms) than data from cylinder smart meters (nearest 0.01 kilograms). As households are more frequently consuming less gas than the 0.2 kg threshold for the Goldcard meters during a single cooking event (Table S1), Goldcard meters artificially inflated LPG consumption per cooking event. Mean monthly per capita PAYG LPG consumption was very similar between all PayGo Energy customers and only those using cylinder smart meters both before and during COVID-19 community lockdown.

Table S1. Comparison of Pay-As-You-Go (PAYG) LPG fuel usage data using data from all customers (Goldcard Meters + Cylinder Smart Meters) (N=437) and only customers using Cylinder Smart Meters (N=239) before (January 2018-February 2020) and during (March 2020-June 2020) the COVID-19 lockdown

Metric	(Mean (SD))					
	Pre-Lockdown		Pre-Lockdown		Lockdown	
	All Customer Data (N=437) ¹	Data From Smart Meters only (N=239)	All Customer Data (N=298) ²	Data From Smart Meters only (N=189)	All Customer Data (N=298) ²	Data From Smart Meters only (N=189)
Kg of gas used per cooking event	0.17 (0.14)	0.04 (0.05)	0.15 (0.12)	0.04 (0.05)	0.11 (0.12)	0.04 (0.07)
Kg of gas/capita/month	0.97 (0.74)	0.90 (1.0)	0.98 (0.30)	0.98 (0.28)	1.25 (1.01)	1.24 (0.47)

1. All households that used PAYG LPG since January 2018

2. Only households that still had an active PAYG LPG account during the COVID-19 lockdown

There were not significant socioeconomic differences among all PayGo Energy customers and only customers upgraded to cylinder smart meters during the analysis period (Table S2). Thus, consumption of PAYG LPG during a single cooking event from only customers upgraded to cylinder smart meters is likely representative of the cooking event LPG consumption among all PayGo Energy customers.

Table S2. Comparison of Socioeconomic Characteristics from all customers (Goldcard Meters + Cylinder Smart Meters) (N=437) and only customers using Cylinder Smart Meters (N=239) before (January 2018-February 2020) and during (March 2020-June 2020) the COVID-19 lockdown

Characteristic	All PayGo Energy Customers (n=437)	Customers using Cylinder Smart Meters (n=211)	Test statistic (χ^2); P-value
Sex of main cook			0.73 p=0.39
Female	211 (83%)	48 (88%)	
Sex of fuel decision-maker		19	0.58 p=0.45
Female	153 (59%)	36 (65%)	
Highest Household Level of Education			2.29 p=0.32
None	4 (2%)	1 (2%)	
Primary	57 (26%)	10 (22%)	
Secondary or university	160 (72%)	35 (76%)	
Occupation (male head of household)			4.26 p=0.24

Business/government employee	22 (27%)	6 (60%)	
Informal sector	22 (27%)	1 (10%)	
Day laborer/casual job	17 (21%)	2 (20%)	
Unemployed	2 (2%)	1 (10%)	
Occupation (female head of household)			1.93 p=0.75
Day laborer/casual job	22 (26%)	2 (13%)	
Business/government employee	11 (13%)	3 (20%)	
Informal sector	39 (46%)	9 (60%)	
Unemployed	9 (11%)	1 (6%)	
Farmer/homemaker	3 (4%)	0	

Note: some demographic data was only collected from a subset of participants. Totals for certain variables do not sum up to overall sample size.

Socioeconomic Characteristics of PayGo Energy Customers

Another sensitivity analysis (chi-square tests) was conducted to compare the socioeconomic status (SES) of PayGo Energy customers with that of a random sample of households participating in a previous study in the same community.¹ There were no significant differences found in highest household education level and the occupation of the female and male head of household (Table S3). However, a higher proportion of cooking fuel decision makers were female among PAYG LPG customers (59%) than those that were not (47%) (p=0.05) (Table S3). Further, the male head of household was more likely to be employed among PayGo Energy customers (98%) compared to the proportion of employed males in the community (88%). Additionally, the percent of male primary cooks using PAYG LPG (17%) was significantly higher than the percent of male cooks in the community not using PAYG LPG (8%).

Table S3. Comparison of Pay-As-You-Go (PAYG) LPG users and non-PAYG LPG users in Mukuru Kwa Reuben informal settlement (Nairobi, Kenya)

Characteristic	PAYG LPG Users (n=435)	Non PAYG LPG Users (n=191)	Test statistic (χ^2); P-value
Sex of respondent			0.11 p=0.73
Female	308 (71%)	130 (73%)	
Sex of main cook			5.8 p=0.02*
Female	211 (83%)	163 (92%)	
Sex of fuel decision-maker			4.0 p=0.05*
Female	153 (59%)	49 (47%)	
Highest Household Level of Education			3.2 p=0.20
None	4 (2%)	0	
Primary	57 (26%)	51 (27%)	
Secondary or university	160 (72%)	140 (73%)	
Occupation (male head of household)			10.8 p=0.01*
Business/government employee	22 (27%)	41 (33%)	
Informal sector	22 (27%)	21 (17%)	
Day laborer/casual job	17 (21%)	46 (38%)	

Unemployed	2 (2%)	15 (12%)	
Occupation (female head of household)			3.2 p=0.52
Day laborer/casual job	22 (26%)	19 (36%)	
Business/government employee	11 (13%)	8 (15%)	
Business owner	39 (46%)	17 (33%)	
Unemployed	9 (11%)	7 (13%)	
Farmer/homemaker	3 (4%)	1 (2%)	
Household Size (number of rooms)			74.4 p<0.001*
1	124 (49%)	156 (88%)	
2	68 (27%)	18 (10%)	
3+	59 (24%)	4 (2%)	
Main lighting fuel			
Electricity	169 (73%)	165 (93%)	31.5 p<0.001*
Kerosene, candles, other	73 (27%)	13 (7%)	

*=statistically significant at alpha=0.05 level

Note: some demographic data was only collected from a subset of participants. Total for certain variables do not sum up to overall sample size.

An additional sensitivity analysis was conducted to compare PAYG LPG customers in Mukuru kwa Reuben with LPG users in Eldoret, Kenya to determine if higher use of LPG during lockdown may be related to socioeconomic differences between the two populations. The results indicated a significantly higher SES among households in Eldoret compared with Mukuru kwa Reuben across all relevant variables examined (education, occupation, household size, electricity access for lighting) (Table S4). Thus, higher maintenance of LPG usage during lockdown among the lower SES households in Mukuru kwa Reuben is likely the result of the payment scheme offered by PAYG and not due to higher income. As households in Eldoret dramatically reduced their LPG consumption during lockdown, PAYG LPG may be beneficial in preventing increases in polluting fuel use among higher income households. It is evident that polluting cooking fuel use likely increased across various income strata in Kenya, warranting the need for technological and policy solutions that can be scaled up to large sectors of the population.

Table S4. Comparison of Pay-As-You-Go (PAYG) LPG users in Mukuru Kwa Reuben informal settlement (Nairobi, Kenya) (n=435) and LPG users in Eldoret, Kenya (n=201)

Characteristic	PAYG LPG Users (n=435)	LPG Users in Eldoret, Kenya (n=201)	Test statistic (χ^2); P-value
Highest Household Level of Education			38.2 p<0.001*
None	4 (2%)	7 (3%)	
Primary	57 (26%)	41 (20%)	
Secondary or university	160 (72%)	153 (76%)	
Occupation (male head of household)			20.4 p<0.001*
Business/government employee	22 (27%)	81 (51%)	
Business owner/Informal sector	22 (27%)	50 (31%)	

Day laborer/casual job	17 (21%)	24 (15%)	
Unemployed	2 (2%)	4 (3%)	
Occupation (female head of household)			29.8 P<0.001*
Day laborer/casual job	22 (26%)	1 (2%)	
Business/government employee	11 (13%)	15 (35%)	
Business owner/Informal sector	39 (46%)	18 (42%)	
Unemployed	9 (11%)	4 (9%)	
Farmer/homemaker	3 (4%)	5 (12%)	
Household Size (number of rooms)			41.4 p<0.001*
1	124 (49%)	38 (19%)	
2	68 (27%)	54 (27%)	
3+	59 (24%)	109 (54%)	
Main lighting fuel			32.4 p=<0.001*
Electricity	169 (73%)	185 (92%)	
Kerosene, candles, other	73 (27%)	16 (8%)	

Recruitment of Customers

The majority of PayGo Energy customers were recruited via door-to-door recruitment (n=156; 37%), PayGo Energy staff members identifying a new customer (e.g. on a walk through the community) (n=126; 30%) or referral by other customers (n=78; 19%) (Table S5).

Table S5. PayGo Energy customer recruitment methods (N=417)

Method	N (%)
Door-to-door recruitment	156 (37%)
PayGo Energy staff identified new customer	126 (30%)
Customer referral	78 (19%)
Marketing event	28 (7%)
Customer initiated	19 (5%)
Staff referral	10 (2%)

PayGo Energy customers included in the study sample were mostly recruited in two ‘waves’ in 2017 and 2019. This resulted in the majority of households having used PAYG LPG for approximately three years (31-36 months) or one year (7-12 months) (Table S6) by June 2020.

Table S6. Months of smart meter data available for the study sample (N=386)

Number of months of PAYG LPG smart meter data available	Number of customers
1-6	63
7-12	120
13-18	11

19-24	24
25-30	28
31-36	121
37-42	19

Account Deactivations

One in five customers who deactivated their PayGo Energy account cited high costs as their main reason; 13% (n=17) of respondents cited high costs specifically and 7% (n=9) switched to purchasing LPG under the cylinder recirculation model (CRM) in 2017, when the cost of PayGo LPG was higher than purchasing an LPG cylinder (Table S7). Account deactivations due to high costs suggests that price elasticity plays a key role in decision making of cooking fuel purchases. High price elasticity around use of modern cooking fuels has been documented in Brazil - around three million households using LPG for cooking switched to firewood or charcoal between 2016-2018 because of LPG price increases and reduced income due to higher unemployment.²

Among households using kerosene prior to registering for PAYG LPG, one-third (n=6) of those terminating their account with PayGo Energy due to high recurring fuel cost indicated switching to buying full LPG refills, while two-thirds (n=13) did not. This illustrates that introduction to LPG under a PAYG model did not consistently lead to sustained usage of LPG when prices were not satisfactory but was successful as entry point to start using LPG.

Table S7. Reasons for PayGo Energy customers deactivating their account

Reason	Overall	LPG	Kerosene	Charcoal
Moved	41 (33%)	0	36 (35%)	4 (67%)
Tampered or stolen equipment	34 (27%)	3 (27%)	29 (28%)	0
Switched to standard LPG refills under the BCRM ¹	9 (7%)	3 (27%)	6 (6%)	0
Too expensive	17 (13%)	3 (27%)	13 (13%)	0
Stopped using gas (reason unknown)	24 (19%)	2 (18%)	19 (18%)	2 (33%)

1. BCRM = branded cylinder recirculation model. This refers to buying and then swapping a full LPG cylinder once empty with a full filled cylinder of the same size and brand.

Note: reasons for deactivation across primary fuel types do not always add up to overall category due to missing data on previous primary fuel from some customers

Sex of Fuel Decision Maker

Similar to an higher proportion of female primary cooking fuel decision-makers among households adopting PAYG LPG compared with the population-level proportion of female primary cooking fuel decision-makers in the community (Table S3), a significantly higher proportion (76%) of cooking fuel decision makers were female among households previously bulk purchasing LPG prior to registering with PayGo Energy, compared with those that did not (55%) (Table S8).

Table S8. Sex of fuel decision-maker by households using or non-using LPG prior to registering with PayGo Energy

	Non-LPG user prior to registering for PAYG LPG (N=206)	LPG user prior to registering for PAYG LPG (N=29)	P-value (χ^2)
Sex of fuel decision-maker			
Female	113 (55%)	22 (76%)	0.05*
Male	93 (45%)	7 (24%)	

*=statistically significant at alpha=0.05 level

Note: information on sex of the cooking fuel decision-maker was only collected from a subset of participants.

Cooking Event Patterns

Among 20 households that previously used kerosene and LPG under the CRM before adopting PAYG LPG, there was a notable increase in the number of cooking events per day from once to twice a day (Figure S2).

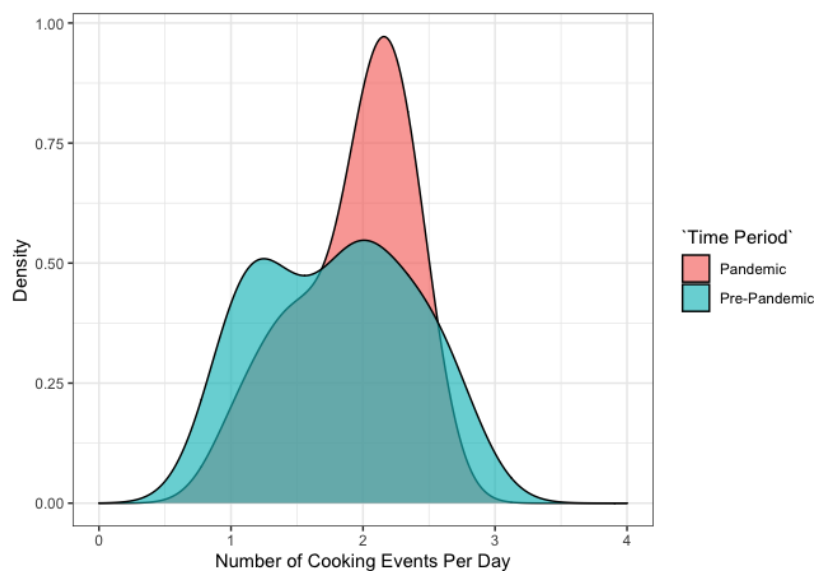


Figure S2. Number of cooking events per day using PAYG LPG stove before ('Pre-Lockdown') and during COVID-19 community lockdown ('Lockdown') among households previously using LPG and kerosene stoves before registering with PayGo Energy (n=20).

Hour of Day Cooking with Pay-As-You-Go LPG

The hour of day when PAYG LPG was used varied according to the previous primary cooking fuel used before adopting PAYG LPG. PAYG LPG was commonly used for preparing breakfast (6-8 am) and lunch (1-2 pm) among households using charcoal before registering with PayGo Energy. PAYG LPG was used more commonly for preparing dinner (6-8 pm) by households previously cooking with kerosene or LPG (Figure S3).

PAYG LPG was most commonly used for preparing breakfast (6-9 am) and dinner (7-10 pm) among households where the female head was employed in the informal sector (Figure S4). Among those formally employed, PAYG LPG was more commonly used for preparing breakfast before the lockdown (6-8 am) with a shift to cooking with PAYG LPG more commonly for lunch (12-2 pm) and dinner (6-8 pm) before the lockdown. This likely reflects individuals eating their lunch at home during lockdown when they would regularly eat this meal at work pre-lockdown. PAYG LPG cooking times at breakfast, lunch and dinner were less common among those with casual jobs, perhaps due to less structured work schedules (Figure S4).

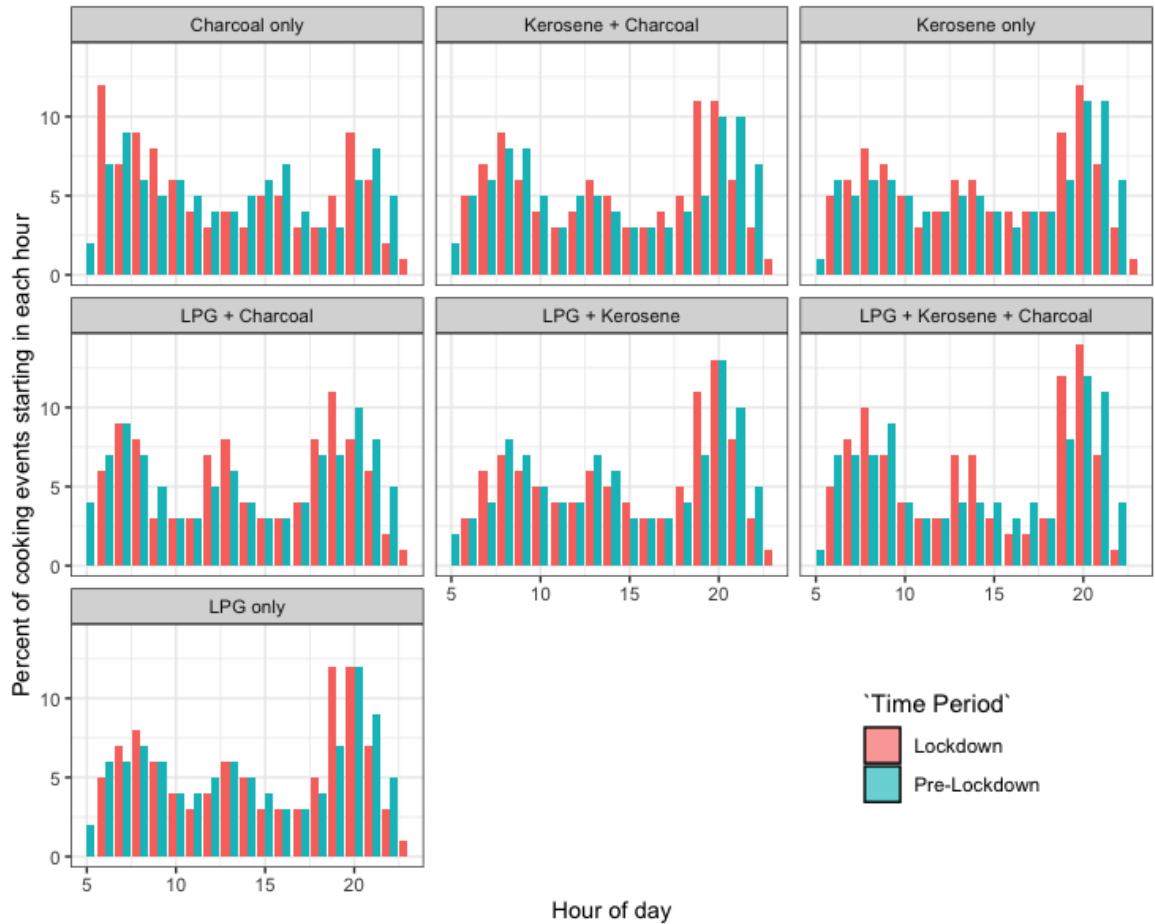


Figure S3. Hour of day of cooking events registered to PAYG LPG smart meter technology by previous primary cooking fuel used when registering with PayGo Energy before ('Pre-Lockdown') and during COVID-19 community lockdown ('Lockdown')

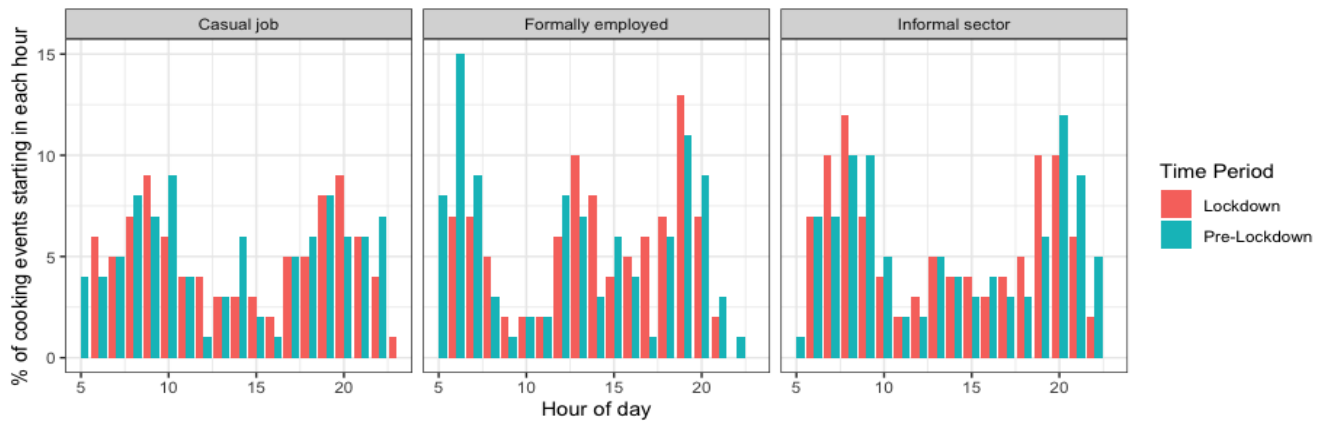


Figure S4. Hour of day of cooking events registered to PAYG LPG smart meter technology by female occupation when registering with PayGo Energy before ('Pre-Lockdown') and during COVID-19 community lockdown ('Lockdown')

Cooking and Spending Patterns among Commercial Customers

Monthly consumption of PAYG LPG among commercial customers decreased by 4 kg during lockdown (17.1 kg (pre-lockdown) to 13.1 kg (lockdown)) (Table S9). This contrasts with an increase in consumption of 0.6 kg per month among residential customers. The commercial cook interviewed stated that they decreased their PAYG LPG consumption due to a diminishing number of customers during this time period, particularly because of the dusk-to-dawn curfew, which prevented community members from dining at his restaurant at dinnertime.

Both residential and commercial customers decreased their average single payment amount; however, commercial customers decreased their spending by a wider margin. This resulted in commercial customers spending less on PAYG LPG per month during lockdown, while residential customers slightly increased their monthly expenditure.

Table S9. Pay-As-You-Go (PAYG) LPG fuel usage and spending habits among commercial and residential customers before (March-June 2018/2019) and during (March 2020-June 2020) the COVID-19 lockdown

Metric (Mean (SD))	Customer type			
	Commercial		Residential	
	Pre-Lockdown	Lockdown	Pre-Lockdown	Lockdown
Kg gas consumed per month	17.1 (12.1)	13.1 (10.7)	3.2 (1.8)	3.8 (2.2)
Cooking events per day	2.06 (0.69)	1.94 (0.58)	1.07 (0.23)	1.72 (0.65)
Minutes per cooking event	15.4 (8.5)	11.1 (4.2)	14.4 (13.9)	13.5 (13.0)
Single payment amount (KSh)	218 (243)	156 (202)	336 (286)	178 (189)
Amount spent per month (KSh)	2534 (1649)	2290 (1717)	867 (469)	816 (510)
Days between payments (median [IQR])	2.0 [0.9, 3.2]	0.7 [0.3, 0.9]	8.0 [4.0, 22.0]	4.0 [2.5, 9.0]

Cooking Intensity

Cooking intensity (defined as grams of LPG used per minute) significantly increased during COVID-19 lockdown (Table 2). This may reflect differences in the type of meals cooked during the lockdown. There was not a significant correlation between cooking event length and cooking intensity (Figure S5).

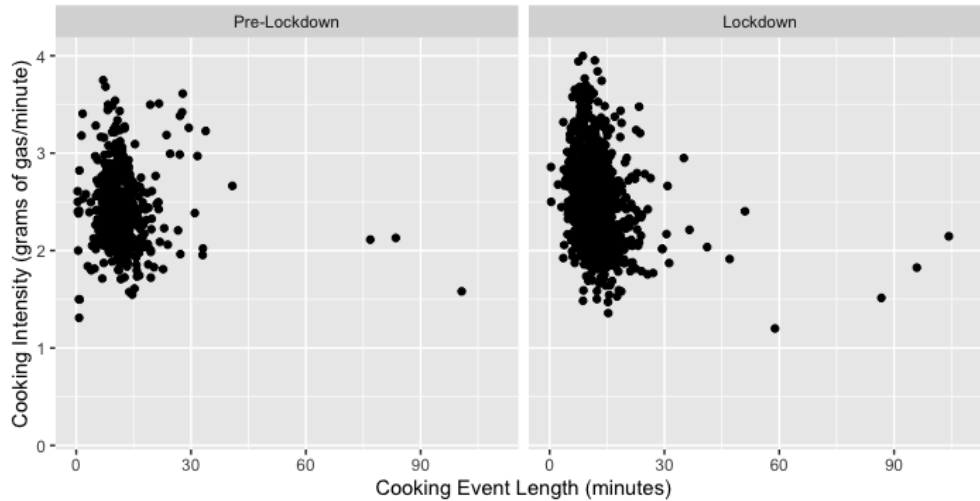


Figure S5. Correlation of cooking event length and cooking intensity before ('Pre-Lockdown') and during COVID-19 community lockdown ('Lockdown')

Intraclass Correlation

There was higher within-household variability in the number of days using gas each month than between households (ICC <0.5) both before (0.41), and to a greater extent, during the lockdown (0.25) (Table S10). There was higher variability in payment amount between households than within households (ICC >0.7), showing that households appear to maintain a consistent payment scheme when using PAYG LPG. The within-household variability in frequency of payments decreased substantially (higher ICC) during the COVID-19 lockdown (ICC=0.77) compared with before the lockdown (ICC=0.52).

Table S10. Intraclass correlation coefficient (ICC) for PAYG LPG consumption and spending metrics

Characteristic	ICC ¹		
	Pre-Lockdown	Pre-Lockdown (March-June 2018 & March-June 2019)	Lockdown (March-June 2020)
Kg/month/capita	0.51	0.53	0.56
Number of days using gas/month	0.41	0.34	0.25
Single payment amount	0.78	0.82	0.73
Number of payments/month	0.63	0.52	0.77

1. ICC represents the variability between households relative to the total variance between and within households.

References

1. Shupler M, Mwitari J, Gohole A, Cuevas RA de, Puzzolo E, Cukic I, et al. COVID-19 Lockdown in a Kenyan Informal Settlement: Impacts on Household Energy and Food Security. medRxiv. 2020 May 29;2020.05.27.20115113.