

SUPPORTING INFORMATION : APPENDIX 1

This appendix has been provided by the authors to give readers additional information about their work.

Supplement to: Anna, Goyard, et al.

High seroprevalence but short-lived immune response to SARS-CoV-2 infection in Paris

François Anna^{1*}, Sophie Goyard^{2,3*}, Ana Ines Lalanne^{4,5*}, Fabien Nevo^{1,6}, Marion Gransagne⁷, Philippe Souque⁶, Delphine Louis^{4,5}, Véronique Gillon⁸, Isabelle Turbiez⁸, François-Clement Bidard^{5,9,10}, Aline Gobillion¹¹, Alexia Savignoni¹¹, Maude Guillot-Delost^{5,12}, François Dejardin¹³, Evelyne Dufour¹³, Stéphane Petres¹³, Odile Richard-Le Goff¹⁴, Zaineb Choucha⁷, Olivier Helync¹⁵, Yves L. Janin¹⁵, Nicolas Escriou⁷, Pierre Charneau^{1,6}, Franck Perez¹⁶, Thierry Rose^{2,3**}, Olivier Lantz^{4,5,12**}

Author affiliations

1. Theravectys, Paris, 75015, France
2. Unit of Lymphocyte Cell Biology, Immunology Department, Institut Pasteur, Paris, 75015, France
3. INSERM 1221, Institut Pasteur, Paris, 75015, France
4. Laboratoire d'Immunologie Clinique, Institut Curie, Paris, 75005, France.
5. Centre d'Investigation Clinique en Biothérapie, Institut Curie (CIC-BT1428), Paris, 75005, France
6. Unit of Molecular Virology and Vaccinology, Virology Department, Institut Pasteur, Paris, 75015, France
7. Innovation Laboratory: Vaccines, Institut Pasteur, Paris, 75015, France
8. Direction of the Clinical Research, Institut Curie, Paris, 75005, France.
9. Medical Oncology Department, Institut Curie, Paris, 75005, France
10. UVSQ, Paris-Saclay University, Saint-Cloud, 92210, France
11. Biometry, Institut Curie, Paris, 75005, France
12. INSERM U932, PSL University, Institut Curie, Paris, 75005, France
13. Production and purification of recombinant proteins technological platform, Paris, 75015, France
14. Unit of Antibody in Therapy and Pathology, Institut Pasteur, Paris, 75015, France
15. Unit of Chemistry and Biocatalysis, Institut Pasteur, UMR 3523 CNRS, Paris, 75015, France
16. Unit of Cell Biology and Cancer, Institut Curie, Paris, 75005, France

Table of Contents

Supplementary Methods

Ethical considerations

Participant enrolment

Questionnaire

Luciferase-Linked Immuno Sorbent Assays (LuLISA)

Plasmid design and production of Nucleoprotein and Spike from SARS-CoV-2

Plasmid design and production of Nucleoprotein from SARS-CoV-1 and HCoV

Design and synthesis of plasmid encoding the anti-IgG nanobody-luciferase tandem

Expression, purification and validation of anti-IgG nanobody-Luciferase tandem

IgG LuLISA assay protocol

S-Pseudo-typed Neutralization Assay (PNT)

Pseudo-virus production and permissive cell line generation

Pseudo-neutralization assay protocol

Statistical analysis

Supplementary Figures

Figure S1. Description of anti-IgG VHH Fc1-KAZ and of SARS-CoV2 viral protein targets Nucleoprotein and Spike

Figure S2. Luciferase-linked immuno-sorbent assay

Figure S3. Pseudo-neutralization assay (PNT)

Figure S4. Specificity of assayed IgG against Nucleoproteins of SARS-CoV2 vs SARS-CoV1 and seasonal virus HCoV

Figure S5. Sequence comparison of SARS-CoV2, SARS-CoV1 and seasonal virus Nucleoproteins

Figure S6. Serological profile comparison between asymptomatic and symptomatic workers

Figure S7: PNT raw data for cohort analysis

References

SUPPLEMENTARY METHODS

Ethical considerations

This study was registered and received ethical approval by the Comité de Protection des Personnes Méditerranée III (2020.04.18 bis_ 20.04.16.49458, 27/4/2020) registered in the clinical trial database (NCT04369066). All participants were informed of the study outcomes. All blood samples have been drawn and anonymized at the Institut Curie and their analysis have been performed at the Institut Pasteur, Paris.

Participant enrolment

The study called volunteer participants working at one of the three Institut Curie locations (Paris, Orsay or Saint Cloud) for four longitudinal blood tests at t_0 then after 1, 3 and 6 months. Following informed consent, 18 years of age or older participant outside of any SARS-CoV-2 acute infectious episode in the last 7 days, completed a web-based questionnaire (Ennov Clinical). Participants covered hospital and non-hospital related activities, age and sex. A 5 mL blood sample was taken from all participants in dry tubes. After clotting, blood was centrifuged 10 min at 2000 g and frozen. Supernatant serum was separated and frozen.

Questionnaire

The questionnaire provided in Supplementary Appendix 2 recorded individual information and details related to SARS-CoV-2 infection, including date of testing, date of symptom onset and a description of symptoms if there were some. Recorded symptoms were fever, fatigue, cough, difficulty breathing, shortness of breath, loss of taste (ageusia) or smell (anosmia), headache, muscle aches, conjunctivitis or colds, digestive disorders (vomiting, diarrhea).

Luciferase-Linked Immuno Sorbent Assays (LuLISA)

Plasmid design and production of Nucleoprotein and Spike from SARS-CoV-2

Production of the Nucleoprotein (N): A codon-optimized gene was synthesized (GeneArt, Thermo Fisher Scientific, Waltham, MA) and subcloned in the pETM11 expression vector¹ allowing the expression of the full-length N protein (UniProtKB ID: PODTC9) with an amino-end (His)₆ tag in the *E. coli* BL21 (DE3) pDIA17 strain. Bacteria were grown in Nzytech auto-inducible-medium (Lisboa, Portugal) for 4 hours at 37°C then 15 hours at 18°C. Cultures are then centrifuged and the pellets were lysed using a cell disrupter (Constant system Ltd, Daventry Northants, UK) in a phosphate saline lysis buffer (phosphate 50 mM, NaCl 300 mM, pH=8) supplemented with 20 mM imidazole, one complete EDTA-free protease tablet (Merck, Darmstadt, Germany) and 1250 units of benzonase (Merck, Darmstadt, Germany). 2.5mg of RNase was added (Thermo Fisher Scientific, Waltham, MA) and the lysate was further incubated at room temperature for about 20 min. The lysate was centrifuged at 19000 rpm and the soluble fraction was recovered for affinity purification on Protino Ni-NTA 5 ml column (Macherey Nagel, Dueren, Deutschland). The protein was eluted by a 20 - 250 mM imidazole gradient in lysis buffer. The fractions containing the protein of interest were pooled and injected in a Superdex 200 16/600 size-exclusion chromatography column (Cytiva, Velizy, France) equilibrated in a phosphate 50 mM, NaCl 500 mM pH=8 buffer. The protein was eluted as an homodimer and analyzed in denaturing condition on a stain-free SDS PAGE (4–15% Mini-PROTEAN® TGX Stain-Free™ Protein Gels, Bio-Rad) as shown in Supplementary Appendix 1 Figure S1 and native condition using multi-angle diffusion light scattering (not shown, Wyatt, CA, USA) for quality validation (Molecular Biophysics Facility, Institut Pasteur). Samples were aliquoted (0.35 mg/mL) and stored at 4°C until use.

Production of the Spike protein (S): A codon-optimized nucleotide fragment encoding the ectodomain (amino acid 1 to 1211) of the S protein (UniProtKB ID: P0DTC2) was synthesized (GeneArt, Thermo Fisher), fused to nucleotide fragments encoding the trimerization foldon domain of the bacteriophage T4 fibrin and a Twin-Strep-tag (IBA Life Science, Goettingen, Germany) and subcloned into the pCI vector (Promega, Madison, WI USA). The ectodomain was further stabilized in its uncleaved prefusion state through inactivation of its furin cleavage site (R682G, R683S and R685G) and insertion of the 2 proline mutations (K986P and V987P) described by Kirchdoerfer et al. for SARS-CoV-1 spike protein ², respectively. The T4 fibrin foldon (g¹yipeaprdgqA¹²YVRKDGWVLL²³stfl) ³ is used here as an artificial trimerization domain (β -hairpin propeller) for mimicking the Spike trimeric assembly at the virion surface. Expi 293F cells (Life Technologies, Courtaboeuf France) were grown in freestyle 293 expression medium and transfected with the expression vector (300 μ g DNA/ 30 mL of freestyle 293 medium) and 300 μ l of PEI pro (Polyplus transfection, Illkirch, France). Cells were grown 5 days at 37°C and 8% CO₂, orbitally agitated at 110 rpm. The cultures were centrifuged and the supernatant was equilibrated at pH=8.0 with TRIS 1M then concentrated using a 100 kDa MWCO tangential flow filtration cartridge on an Äkta Flux (Cytiva, Velizy France) with a phosphate filtration buffer (phosphate 50 mM, NaCl 300 mM pH=8.0). The retentate was recovered for Twin-Strep-tag-affinity purification on StrepTrap column (Cytiva, Velizy France). The protein was eluted using 2.5 mM desthiobiotine in filtration buffer. The protein was recovered as an homotrimer and analyzed in denaturing condition on a stain-free SDS PAGE (4–15% Mini-PROTEAN[®] TGX Stain-Free[™] Protein Gels, Bio-Rad) as shown in Supplementary Appendix 1 Figure S1 and native condition using analytical size exclusion chromatography and multi-angle diffusion light scattering for quality validation (not shown, Molecular Biophysics Platform, Institut Pasteur). Samples were aliquoted (0.52 mg/mL) and stored at 4°C until use.

Production of Nucleoproteins from SARS-CoV-1 and HCoV: The optimized synthetic gene (GeneArt, Thermo Fisher) of SARS-CoV1, HCoV-HKU, HCoV-OC43, HCoV-NL63, HCoV-229E (UniProtKB ID: P59595, Q5MQC6, P33469, Q6Q1R8, P15130 respectively) with carboxy-end His₆-tag and flanking region corresponding to the pET23 sequence (Novagen). pET23 plasmids were amplified with the forward and reverse oligonucleotides using a Q5 DNA polymerase, dNTP mix (New England BioLabs). The PCR products were purified by electrophoresis on agarose gel (1%, Macherey Nagel). The purified pET23 vector and the synthetic genes were assembled using NEBuilder HiFi assembly master mix (New England BioLabs). These plasmid were used to transform *E.coli* BL21 (DE3). Cells were grown at 18°C and induced with IPTG (Sigma-Aldrich). After harvesting the cells by centrifugation (1.5 L), the pellet was resuspended in 50 mM Tris-HCl pH 8.0, 50 mM NaCl with protease inhibitor (Sigma-Aldrich) and lysozyme (0.1 mg/mL, QBIO-gene). Cells were disrupted by freezing-thawing cycle lysis method. DNase (Sigma-Aldrich) was then added to remove DNA from the sample. SARS-CoV-1 and HCoV Nucleoproteins were purified as described for Fc1-nanoKAZ below. The protein quality was analyzed in denaturing condition on a stain-free SDS PAGE (4–15% Mini-PROTEAN[®] TGX Stain-Free[™] Protein Gels, Bio-Rad) as shown in Supplementary Appendix 1 Figure S4 and in native condition by acquisition of UV-spectra (240-300 nm). Concentrations were estimated from the solution absorption at 280 nm and sequence by the method of Gill and von Hippel ⁴).

Design and synthesis of plasmid encoding the anti-IgG nanobody-luciferase tandem

NanoKAZ (19 kDa) is an optimized sequence of the catalytic domain of the luciferase from the subtropical sea shrimp *Oplophorus gracilirostris* ^{5,6}. The gene *kaz* has been optimized and synthesized by Eurofins (Germany) with carboxy-end His₆-tag and flanking region corresponding to the pET23 sequence (Novagen). pET23 plasmids were amplified with the forward and reverse oligonucleotides using a Q5 DNA polymerase, dNTP mix (New England BioLabs). The PCR products were purified by

electrophoresis on agarose gel (1%, Macherey Nagel). The purified pET23 vector and the synthetic gene were assembled (pET23-*kaz*) using NEBuilder HiFi assembly master mix (New England BioLabs).

The Fc IgG-binding moiety ($K_d=2.14$ nM) is from an antibody of the camelid species alpaca (*Vicugna pacos*) selected against the Fc domain of human IgG (single-domain antibody, ⁷). The gene *fc1* has been synthesized by Eurofins with a flanking region corresponding to the pET23-*kaz* sequence. Synthetic gene *fc1* was amplified with the corresponding forward and reverse oligonucleotides using a Q5 DNA polymerase and dNTP mix. PCR products were purified by electrophoresis on agarose gel. Purified pET23-*kaz* vector and the synthetic gene *fc1* were assembled using the NEBuilder HiFi assembly master mix. The assembled products (5 μ L) were used to transform NEB 5-alpha competent *E. coli* and grown overnight on LB/Agar/ampicillin in a Petri dish. Isolated colonies were grown in liquid medium, plasmids were isolated. The full sequence of the anti-IgG nanobody luciferase tandem ([Fc1]-[nanoKAZ]-[His₆]) was analyzed to confirm the presence of the *fc1-kaz* insert shown in Supplementary Appendix 1 Figure S1.

Expression, purification and validation of anti-IgG nanobody-Luciferase tandem

The pET23-*fc1-nanokaz* was used to transform *E. coli* BL21 (DE3) to achieve high expression in *E. coli*. Cells were grown at 18°C and IPTG (Sigma-Aldrich) was added to induce *fc1-nanoKAZ* production. After harvesting the cells by centrifugation (1.5 L), the pellet was resuspended in 50 mM Tris-HCl pH 8.0, 50 mM NaCl with protease inhibitor (Sigma-Aldrich) and lysozyme (0.1 mg/mL). Cells were disrupted by freezing-thawing cycle lysis method. DNase (Sigma-Aldrich) was then added to remove DNA from the sample.

The crude extract was centrifuged 30 min at 15,000 g. The supernatant was collected and NaCl (500 mM), Imidazole (20 mM, Sigma-Aldrich) and Triton (0.1%, Sigma-Aldrich) were added. The cleared lysate was loaded on a Hi-Trap 5 mL-column (Cytiva, Velizy France) at 4 mL/min using an Äkta pure chromatography system (Cytiva, Velizy France). The column was washed with 20 volumes of column with a running buffer (50 mM Tris-HCl pH 8.0, NaCl 50 mM, 20 mM imidazole) at 5 mL/min. The VHH Fc1-nanoKAZ was eluted with a gradient of imidazole from 20 mM to 200 mM in 50 mM Tris-HCl pH 8.0, 50 mM NaCl at 5 mL/min and fractions of 1 mL were collected in a 96-deepwell plate (Cytiva, Velizy France). Catalytic activity of fractions was profiled using a luminometer Hydex by diluting 10⁷ fold the fractions in PBS with 27 μ M of the imidazo[1,2-*a*]pyrazin-3(7*H*)-one derivative Q-108 resulting from the hydrolysis of hikarazin-108 ⁸. The fractions of high activity were pooled, and loaded on a 1 mL HiTrap Q column (Cytiva, Velizy France) equilibrated in 50 mM Tris-HCl pH 8.0, NaCl 50 mM. The protein was eluted in 50 mM MES pH 6.5, 50 mM NaCl at 1 mL/min at 18°C using the Äkta pure chromatography system. The fractions of 500 μ L were collected in 96-deepwell plates and their activities were assayed as described above. The fractions with high activity were pooled. The quality of the purified protein was assessed by loading an aliquot (10 μ L) on a stain-free SDS gel (4–15% Mini-PROTEAN® TGX Stain-Free™ Protein Gels, Bio-Rad). The gel was activated by UV trans-illumination for 5 min (Bio-Gel Doc XR Imaging System, Bio-Rad). Tryptophan residues undergo an UV-induced reaction with trihalo compounds and produce an imaged fluorescence signal (Supplementary Appendix 1 Figure S1). An UV-spectrum (240-300 nm) was acquired for evaluating the concentration of Fc1-nanoKAZ (MW 34,726 Da) from the solution absorption at 280 nm ($\epsilon = 50,780$ M⁻¹cm⁻¹ estimated by the method of Gill and von Hippel ⁴). The specific activity is about $4 \cdot 10^{17} \pm 0.5 \cdot 10^{17}$ RLU·s⁻¹·g⁻¹ of Fc1-nanoKAZ.

IgG LuLISA protocol

The LuLISA (Luciferase-Linked Immuno-Sorbent Assay) is an ELISA-based method (Enzyme-Linked Immuno-Sorbent Assay) for which the enzyme coupled to the antibody fragment is a luciferase ⁹ and

is distinguished by the nature of the measurement, the relative number of photons collected per second, which quantifies an instantaneous rate of catalytic reaction, whereas ELISAs measure an accumulation of a product or the disappearance of a substrate, whether absorbent or fluorescent, and whose reaction can be stopped at any time. If the relative number of photons in the first minutes is proportional to the number of luciferases in solution, the measurement must be carefully calibrated with robust references under the same conditions in the same multi-well plates. Indeed, luciferases catalyze the decarboxylation of a luciferin, here Q108 (made by the deacetylation of from hikarazine-108)¹⁰, into an amide in the presence of molecular oxygen with a reaction speed dependant on temperature, amount of dissolved oxygen and substrate concentration. The luciferase used is a nanoKAZ⁶ which exhibits inhibition by excess substrate in excess of 54 μM and stochastic inactivation by one of the transient reaction products. The enzyme at the optimum substrate concentration has a half-life of 60 minutes with Q108^{8,10}. The antibody fragment is derived from an alpaca heavy single chain (VHH) with an affinity of 0.58, 1.73, 47.8, 0.30 nM (KD) for the Fc domains of human IgG1, IgG2, IgG3 and IgG4 respectively with an average for overall IgG of 2.14 nM⁷. The anti-IgG VHH-nanoKAZ construction is described in Supplementary Appendix 1 Figure S1A.

As shown in the Supplementary Appendix 1 Figure S2, correlation for four replicates of 96 LuLISA IgG/N on a single 384-well plate with fresh sera is greater than 0.97 (R^2), roughly pipetting errors aggravated by viscosity and protein aggregation variations. R^2 is 0.96 on four different plates, 0.88 to 0.92 between frozen and fresh sera loaded on the same plate and 0.82 to 0.88 when loaded on different plates one month apart while it is 0.88 to 0.96 when loaded with frozen sera at the same time on different plates, 0.92 to 0.96 on the same plates. Both the LuLISA and ELISA are sensitive to the storage quality of the sera, in particular to the thawing conditions which contribute to the denaturation of proteins, in particular albumin, and which cause the formation of aggregates that can pull down immunoglobulins and alter the concentration of soluble specific Ig.

White 384-well plates with flat bottoms (Fluoronunc C384 Maxisorp, Nunc) were coated with either 1 $\mu\text{g}/\text{mL}$ of Nucleoprotein or Spike protein in PBS buffer, 50 $\mu\text{L}/\text{well}$ for 3 hours at room temperature or overnight at 4°C. Wells were washed using a plate washer (Zoom, Berthold Technologies, Germany) two cycles of three times with 100 μL of PBS/Tween 20 0.1%. Sera were diluted 200 times in PBS, non-fat milk 3% and Tween 20 0.1%. 50 μL of serum dilutions were incubated 1 hour at room temperature in their respective wells. Wells were washed two cycles of three times with 100 μL of PBS/Tween 20 0.1%. Purified Fc1-nanoKAZ 1 ng/mL ($400 \cdot 10^6 \text{ RLU} \cdot \text{s}^{-1} \cdot \text{mL}^{-1}$) in PBS, non-fat milk 3% and Tween 20 0.1% was loaded (50 $\mu\text{L}/\text{well}$) and incubated 30 min at room temperature. Wells were washed two cycles of three times with 100 μL of PBS/Tween 20 0.1%. Plates can be stored at this step in PBS until measurements. Just before reading, each of the wells were emptied and loaded with 50 μL of Q-108 at 13 μM . The plate was orbitally shaken for 3 seconds and the collected photons were counted during 1 sec per well and measured 3 times in a plate luminometer (Mithras2, Berthold, Wildbad, Germany).

S-Pseudo-typed neutralization assay

Pseudo-virus production and permissive cell line generation

Pseudo-typed vectors were produced and titrated as previously described¹¹. Adaptation of the protocol are : cells were co-transfected with calcium-phosphate precipitation protocol with 10 μg of packaging plasmid encoding for gag-pol-tat-rev proteins (p8.74), 10 μg of vector plasmid (pTrip-CMV) expressing luciferase Firefly reporter and 5 μg of envelop plasmid expressing a codon-optimized full-length S SARS-Cov-2 (UniProtKB ID: P0DTC2) sequence amplified by PCR from pMK-RQ_S-2019-nCoV with adaptative primers and introduced by BamHI/XhoI restriction/ligation in a pCMV plasmid. Pseudo-typed vectors were harvested at day 2 post-transfection. Functional titer (TU) was determined by SYBRgreen qPCR after transduction of a stable HEK 293T-hACE2 cell line using two couples of primers to either quantify vector genome (forward CMV: ACT GCC AAA ACC GCA TCA CC reverse CMV: AAT

GAC GGT AAA TGG CCC GC) or cell genome (forward GADPH: TCT CCT CTG ACT TCA ACA GC reverse GADPH: CCC TGC ACT TTT TAA GAG CC). To generate the permissive cell line, HEK 293T cells were transduced at MOI 20 with an integrative lentiviral vector expressing cDNA human ACE2 (UniProtKB ID: Q9BYF1) codon-optimized gene (Eurofins) under the control of UBC promoter. Clones were generated by limiting dilution and selected for their permissivity to SARS-CoV-2 S pseudo-typed lentiviral vector transduction with a Luciferase Assay System (Promega).

Pseudo-neutralization assay protocol

First, sera were decomplexed at 56°C during 30 min in a water bath. To determine EC50 serum dilutions (from 1/40 to 1/40960 by successive 4-fold dilutions) are mixed and co-incubated with 300 TU of pseudo-typed vector at room temperature during 30 minutes under agitation. Both, serum and vector are diluted in culture medium DMEM-glutamax (Gibco) + 10% FCS (Gibco) + Pen/Strep (Gibco). Mix is then plated in tissue culture treated black 96-well plate clear bottom (Costar) with 20 000 HEK 293T-hACE2 cells in suspension. To prepare the cell suspension, the cell flask is washed with DPBS twice (Gibco) and cells are individualized with DPBS + 0.1% EDTA (Sigma-Aldrich) to preserve hACE2 protein. After 48h incubation at 37°C 5% CO₂, the medium is completely removed by aspiration and bioluminescence is measured using a Luciferase Assay System (Promega) on an EnSpire plate reader (PerkinElmer).

Statistical analyses

Seropositivity was defined as the presence of detectable anti-SARS-CoV-2 antibodies against N or S. The proportion of seropositive samples was compared by time between onset of symptoms and collection of blood sample using chi-square test.

LuLISA, and pseudo-neutralization of sera were compared by delay since onset of symptoms using the Kruskal-Wallis non-parametric test. The chi-square test was used to evaluate the association between investigated factors and neutralization levels.

All analyses were performed using GraphPad Prism 8 (GraphPad Software, LLC).

References

1. Dummer A, Lawrence AM, de Marco A. Simplified screening for the detection of soluble fusion constructs expressed in E. coli using a modular set of vectors. *Microb Cell Fact* 2005;4:34.
2. Kirchdoerfer RN, Wang N, Pallesen J, et al. Stabilized coronavirus spikes are resistant to conformational changes induced by receptor recognition or proteolysis. *Sci Rep* 2018;8:15701.
3. Meier S, Guthe S, Kiefhaber T, Grzesiek S. Foldon, the natural trimerization domain of T4 fibrin, dissociates into a monomeric A-state form containing a stable beta-hairpin: atomic details of trimer dissociation and local beta-hairpin stability from residual dipolar couplings. *J Mol Biol* 2004;344:1051-69.
4. Gill SC, von Hippel PH. Calculation of protein extinction coefficients from amino acid sequence data. *Anal Biochem* 1989;182:319-26.
5. Hall MP, Unch J, Binkowski BF, et al. Engineered luciferase reporter from a deep sea shrimp utilizing a novel imidazopyrazinone substrate. *ACS Chem Biol* 2012;7:1848-57.
6. Inouye S, Sato J, Sahara-Miura Y, Yoshida S, Hosoya T. Luminescence enhancement of the catalytic 19 kDa protein (KAZ) of *Oplophorus* luciferase by three amino acid substitutions. *Biochem Biophys Res Commun* 2014;445:157-62.
7. Hermans WJJ, Bezemer S, Mijnsbergen YM, inventors; Single-domain antigen-binding proteins that bind mammalian IgG patent WO 2009/011572 Al. 2009 8 July 2008 (08.07.2008).

8. Coutant EP, Goyard S, Hervin V, et al. Gram-scale synthesis of luciferins derived from coelenterazine and original insights into their bioluminescence properties. *Org Biomol Chem* 2019;17:3709-13.
9. Goyard S, Balbino B, Chinthrajah RS, et al. A highly sensitive bioluminescent method for measuring allergen-specific IgE in microliter samples. *Allergy* 2020.
10. Coutant EP, Gagnot G, Hervin V, et al. Bioluminescence Profiling of NanoKAZ/NanoLuc Luciferase Using a Chemical Library of Coelenterazine Analogues. *Chemistry* 2020;26:948-58.
11. Iglesias MC, Mollier K, Beignon AS, et al. Lentiviral vectors encoding HIV-1 polyepitopes induce broad CTL responses in vivo. *Mol Ther* 2007;15:1203-10.

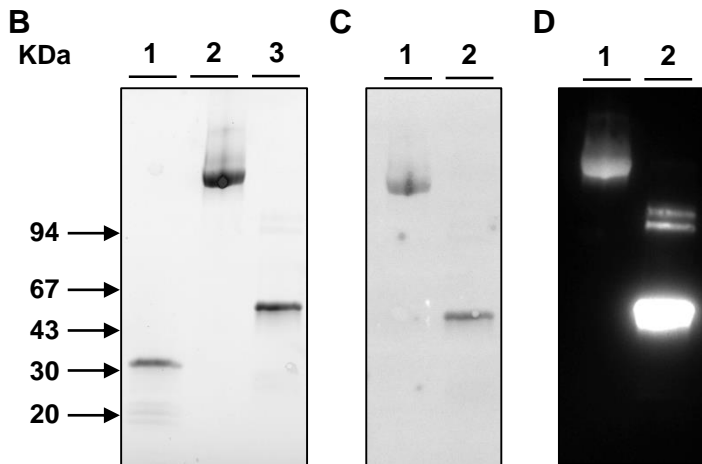
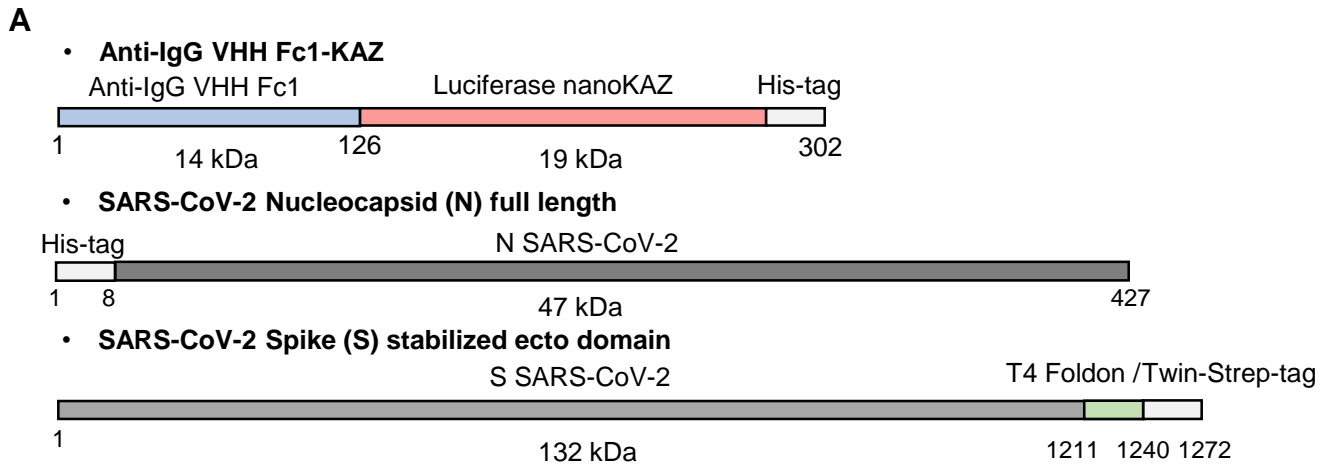


Figure S1 Description of anti-IgG VHH Fc1-KAZ and of SARS-CoV2 viral protein targets nucleoprotein and spike.

(A) Scheme of protein topology used in the study. Quality control of proteins used as targets on SDS-polyacrylamide gel electrophoresis. Proteins were run on a 4-15% gradient gel and visualized by UV-induced fluorescence of tryptophan-bound trihalo compounds (B) or by western blot analysis after transfer onto the PDVF proteins using stain-free system (Bio-Rad) (C) or luminescence (D) Lane 1: Purified VHH-anti IgG Fc1-nanoKaz (2 µg); Lane 2, purified protein SARS-CoV Spike (6 µg); Lane 3 Nucleoprotein (3 µg). Molecular weights are indicated by arrows.

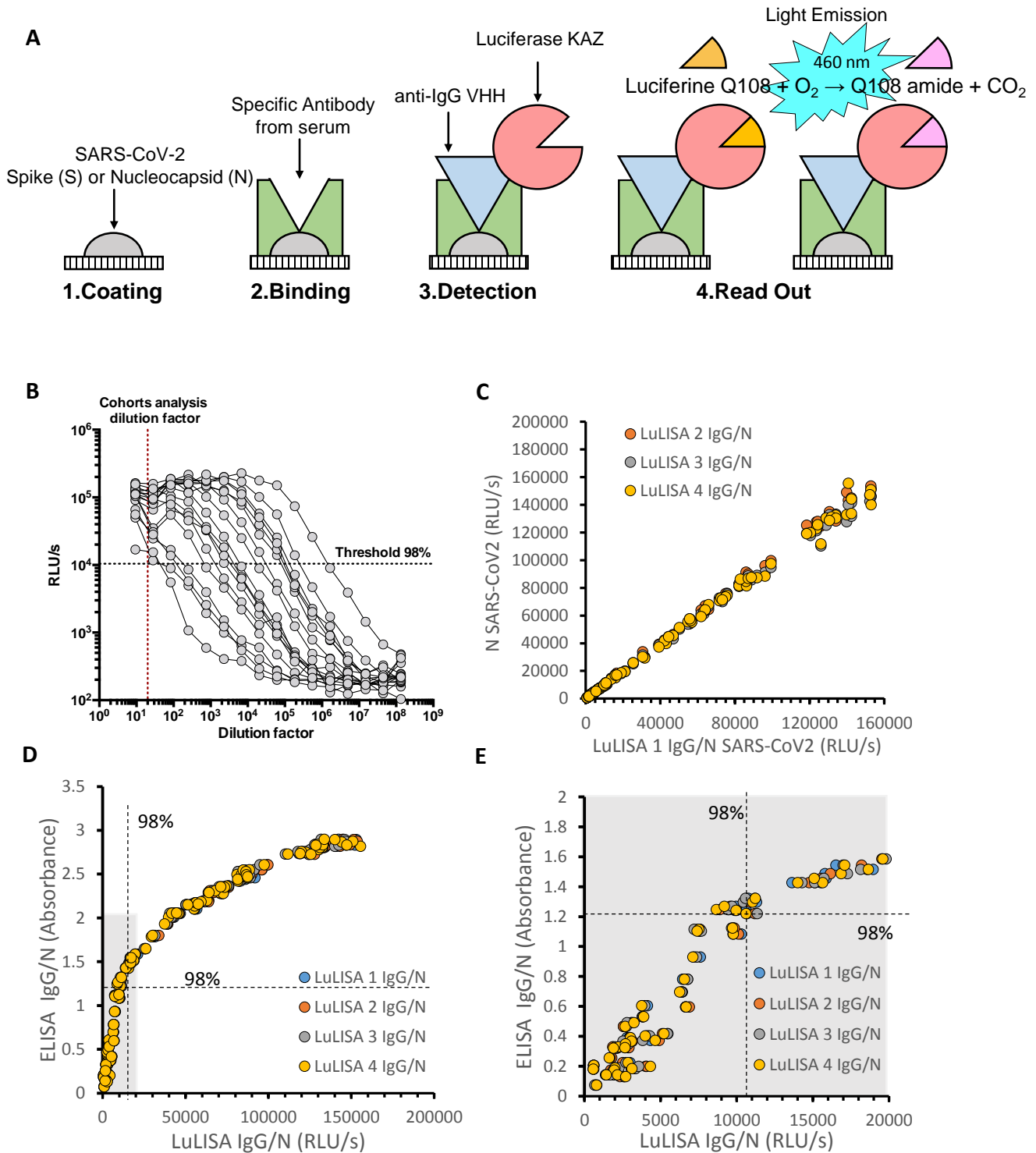


Figure S2 Luciferase-linked immuno-sorbent assay

(A) Scheme of the LuLISA assay. (B) LuLISA of titration of N-specific IgG from patients' sera (Hospital Cochín). Serial dilutions of sera from 10⁻¹ to 10⁻⁸ in PBS. (C) Four repeats of IgG/N LuLISA on the same series of 96 diluted sera in PBS (1/200). (D) Comparison of the 4 IgG/N LuLISA vs IgG/N ELISA (HRP-anti-human IgG) showing the large dynamic scale of LuLISA vs ELISA. (E) The grey zone in D is zoomed showing the higher sensibility of LuLISA (low dispersion of LuLISA values, high dispersion of ELISA values below DO 1.2 for dilution 1/200) and the loss of linearity beyond absorbance 1.2. Threshold 98%, DO 1.2, 10400 RLU/s are indicated with dashed lines.

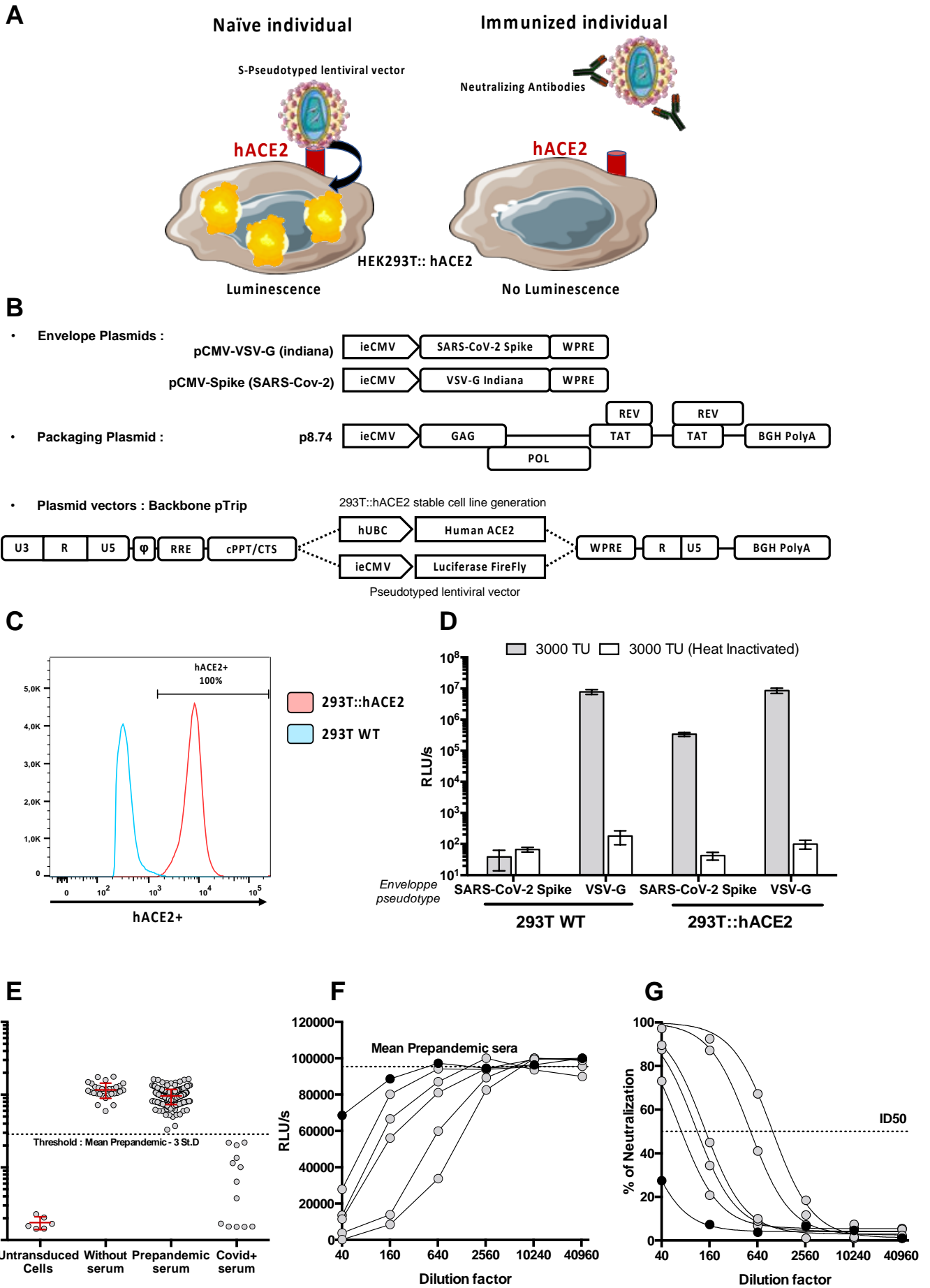


Figure S3: Pseudo-neutralisation assay (PNT)

(A) Schematic representation of Pseudo-neutralization assay.

(B) Production plasmids used to generate lentiviral vectors.

ieCMV: human Immediate early Cytomegalovirus promoter. WPRE : Woodchuck Post-translational Regulatory Element. VSV-G Glycoprotein from Vesicular Stomatitis Virus (serotype Indiana). Gag-Pol-Tat-rev proteins from HIV-1 Strain NDK. BGH Poly A : Polyadenylation Site from Bovine Growth Hormone gene. All following fragments come from HIV-1 Strain NL4.3 : U3RU5 : Full length Long Terminal Repeat, ψ : Encapsidation sequence, RRE: Rev Response Element, RU5 : Truncated Long Terminal Repeat. hUBC : human Ubiquitine C promoter.

(C) Control of hACE2 expression in 293T::hACE2 reporter cell line by FACS. To verify the expression and membrane location of hACE2 protein, parental cell line (293T WT) and hACE2 expressing clone (293T::hACE2) were first labelled polyclonal antibodies anti-hACE2 (AF933, R&D) then a PE-coupled secondary antibody (A32849, Invitrogen). Samples were acquired on a Attune FACS (ThermoFisher).

(D) Control of 293T::hACE2 permissivity et specificity to S-pseudotyped lentiviral vector transduction. Parental cell line and hACE2 clone were transduced with S-pseudotyped lentiviral vector (or VSV-G, an amphotropic envelope as control). To assess that signal is specific to vector particles, equivalent heat-inactivated samples (70°C 30min in a water bath) were also tested.

(E) Threshold determination on different serum collections. To setup up the experimentation, Min-max values are determined on untransduced cells and prepandemic serum (dilution 1/40) respectively, Covid-19 patients are used as positive controls. To define positiveness threshold with a confidence index >99%, this value is set at Mean (prepandemic) – 3 Standard deviation. During sample analysis, all samples are firstly evaluated for positiveness at dilution 1/40. If the value is below threshold, then ID50 is determined as described below in a second experiment.

F-G Dilution curves and ID50 determination. First, raw data (grey points) **(F)** are transformed into percentage of neutralization **(G)**. This percentage is determined according to mean of prepandemic serums (0%) and untransduced cells (100%) values. Second, a non-linear regression is performed (plotted line in graph G) to determine the theoretical dilution that give a 50% inhibition (ID50). A prepandemic sample (Black point) is shown as negative example. Detection limit was set at 40 considering the maximum reached value by prepandemic samples.

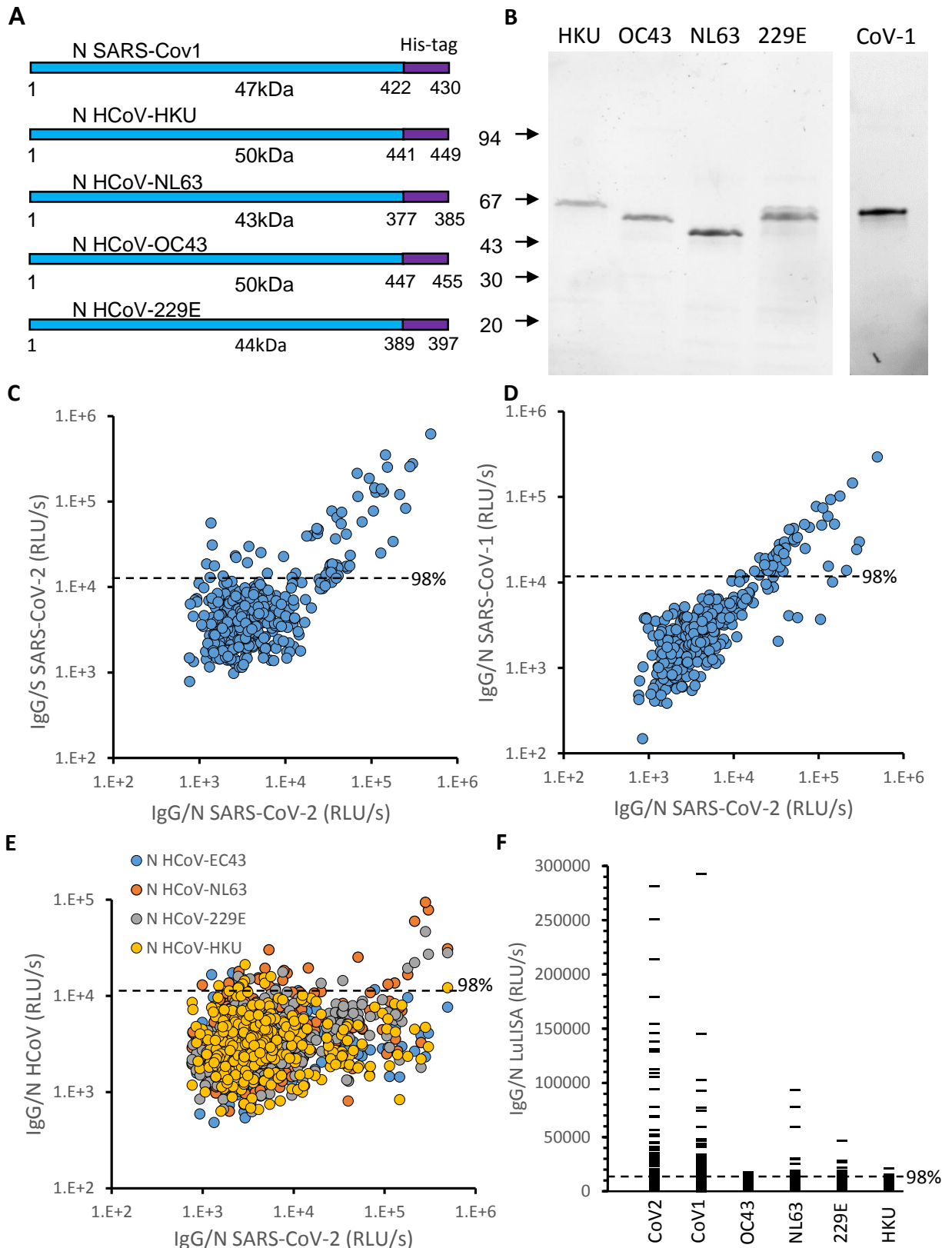


Figure S4 Specificity of assayed IgG against nucleoprotein of SARS-CoV2 vs SARS-CoV1 and seasonal virus HCoV: (A) Protein constructs with His Tag (LEHHHHHH). (B) Control of expressed and purified proteins used as targets using SDS-polyacrylamide gel electrophoresis. The gel is an acrylamide gradient from 4 to 15% . Lane 1: purified protein Nucleocapsid from HCoV-HKU, HCoV-OC43, HCoV-NL63, HCoV-229E and SARS-CoV1 (stain free system, BioRad) . (C) IgG/S vs IgG/N SARS-CoV2 from Curie series (n=376) . (D) IgG LuLISA against N SARS-CoV1 vs SARS-CoV2 (E) IgG LuLISA against N HCoV vs SARS-CoV2 from Curie series (n=376). (F) IgG LuLISA against N SARS-CoV2, SARS-CoV1, HCoV-OC43, HCoV-NL63, HCoV-229E, HCoV-HKU.

Anna et al. Supplementary Appendix 1 Figure S5

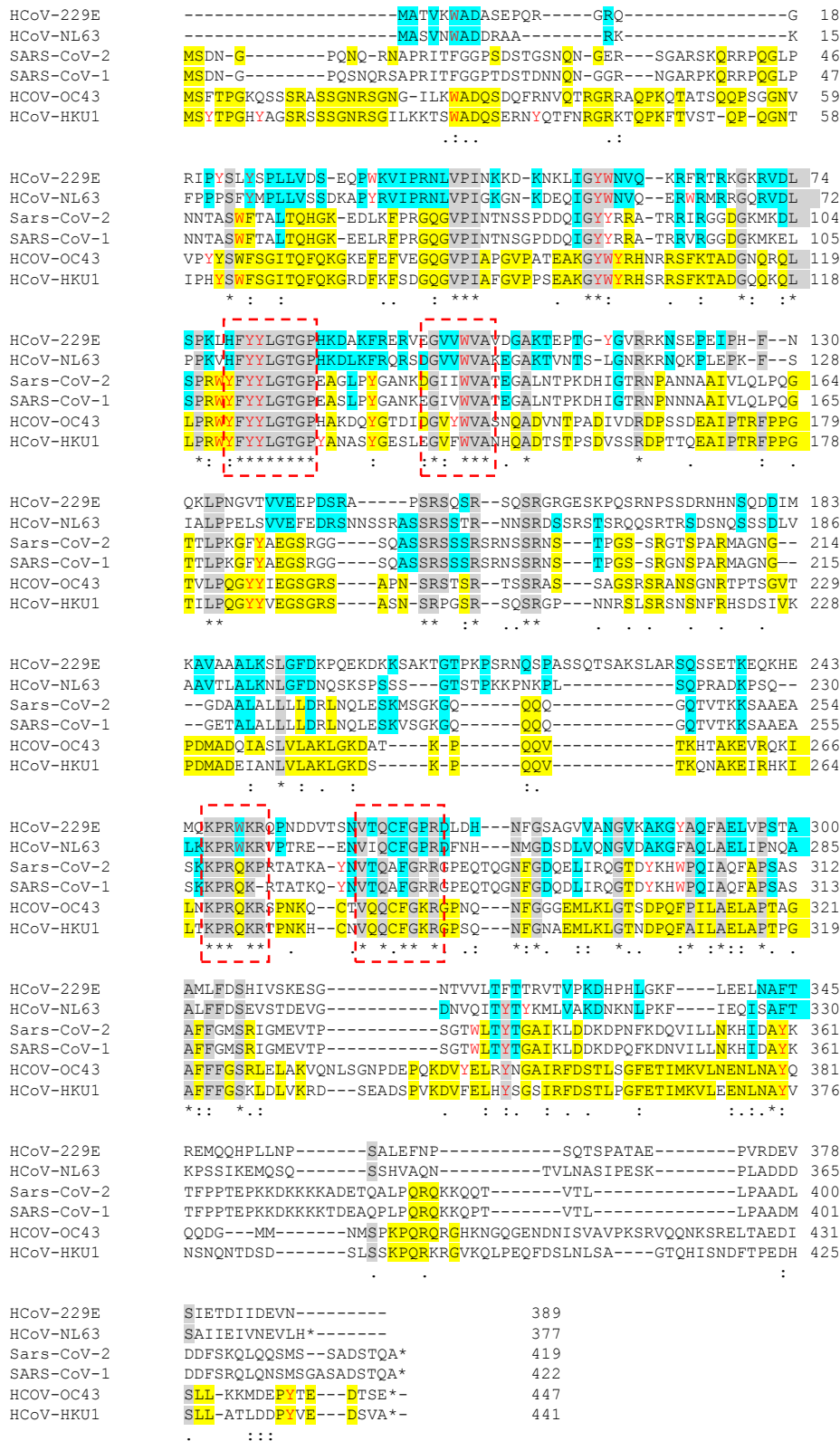


Figure S5 Sequence comparison of SARS-CoV2, SARS-CoV1 and seasonal virus nucleoproteins

Multiple sequence alignments of the four human seasonal coronavirus (HCoV) and the SARS-CoV Nucleoproteins. The alignment was performed using Clustal Omega software from <http://www.ebi.ac.uk/Tools/msa/clustalo>.

Grey background indicates conserved residues in at least 4 sequences. Conserved residues within the two alphacoronavirus and the two beta-coronavirus are highlighted in yellow and blue, respectively with SarS-CoV when applicable. Residues in red denote aromatic residues potentially involved in base stacking interactions when binding to RNA. Red dashed boxes enlight conserved patterns.

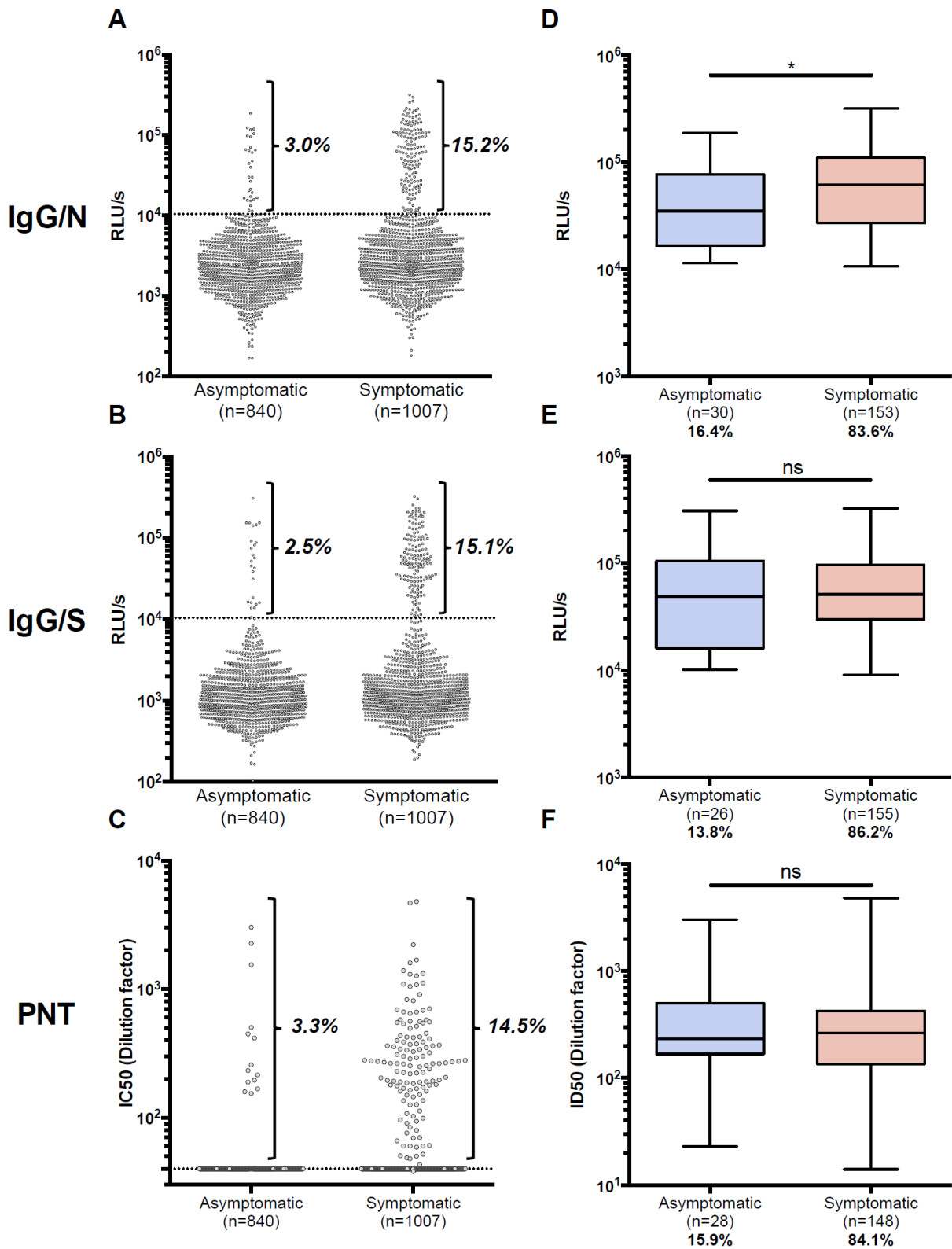


Figure S6: Serological profile comparison between asymptomatic and symptomatic workers

Institut Curie workers were separated in asymptomatic and symptomatic groups according to survey answers. Symptomatic workers reported at least one symptom (listed in table II). Global seroprevalence in LuLISA IgG/N (A), LuLISA IgG/S (B), PNT (C) are shown as raw values. Proportion of seropositive workers is indicated in bold. Proportion of asymptomatic and symptomatic among seropositive workers in LuLISA IgG/N (D), LuLISA IgG/S (E), PNT (F) are represented by whisker-plots. Proportion among total seropositive workers is indicated below in bold. Statistical significance was determined using a Mann-Whitney test (*: $p < 0.05$; ns: non significant).

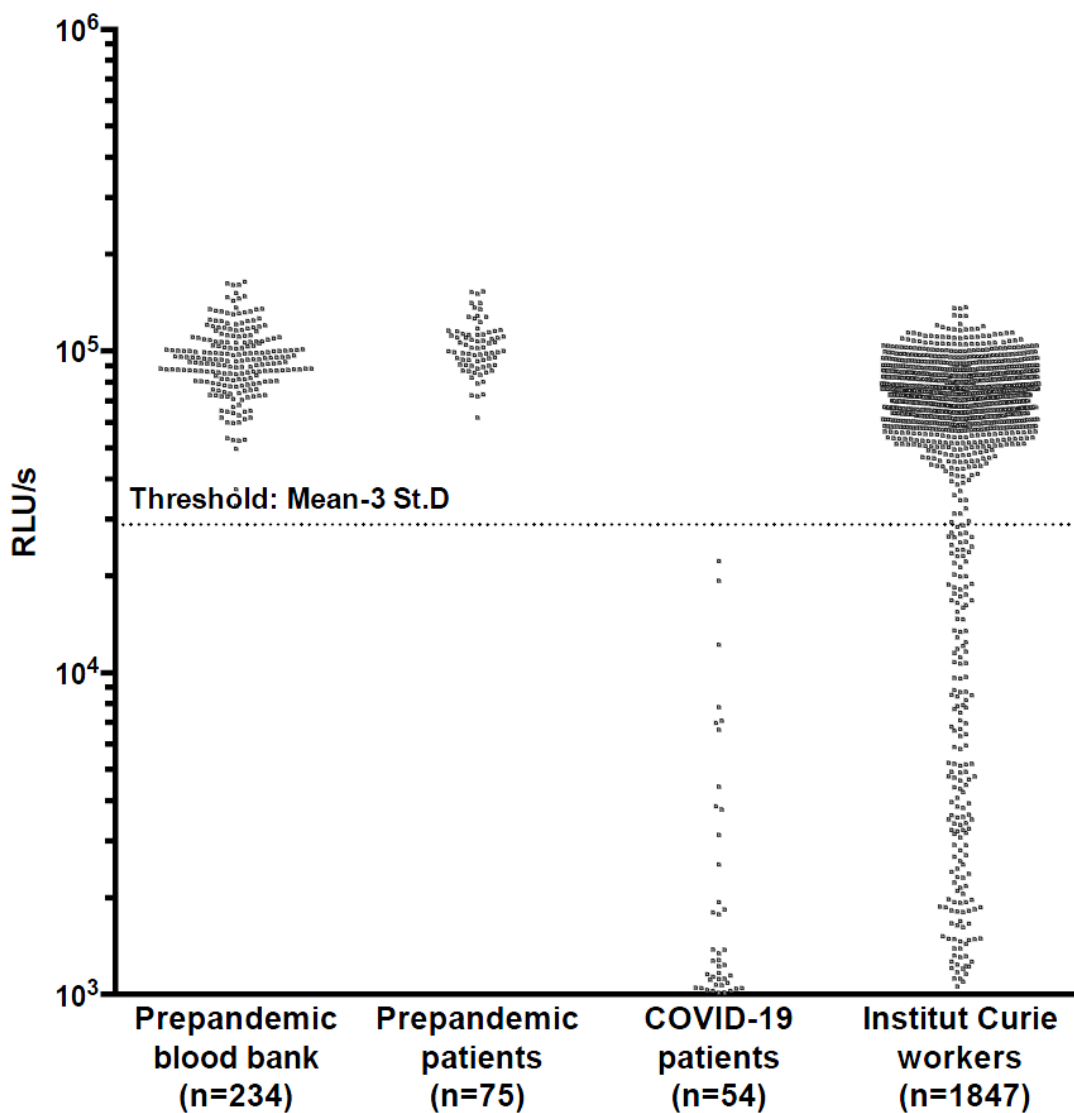


Figure S7: PNT raw data for cohorts analysis

Serum dilution factor:1/40. Positive samples are below the threshold level. Threshold is calculated on raw values of prepandemic sera from a blood bank (see Figure S3). ID50 was determined on positive samples (see Figure 1 and Figure S3)

SUPPORTING INFORMATION : APPENDIX 2

This appendix has been provided by the authors to give readers additional information about their work.

Supplement to: Anna, Goyard, et al.

High seroprevalence but short-lived immune response to SARS-CoV-2 infection in Paris

François Anna^{1*}, Sophie Goyard^{2,3*}, Ana Ines Lalanne^{4,5*}, Fabien Nevo^{1,6}, Marion Gransagne⁷, Philippe Souque⁶, Delphine Louis^{4,5}, Véronique Gillon⁸, Isabelle Turbiez⁸, François-Clement Bidard^{5,9,10}, Aline Gobillion¹¹, Alexia Savignoni¹¹, Maude Guillot-Delost^{5,12}, François Dejardin¹³, Evelyne Dufour¹³, Stéphane Petres¹³, Odile Richard-Le Goff¹⁴, Zaineb Choucha⁷, Olivier Helync¹⁵, Yves L. Janin¹⁵, Nicolas Escriou⁷, Pierre Charneau^{1,6}, Franck Perez¹⁶, Thierry Rose^{2,3**}, Olivier Lantz^{4,5,12**}

Author affiliations

1. Theravectys, Paris, France
2. Unit of Lymphocyte Cell Biology, Immunology Department, Institut Pasteur, Paris, 75015, France
3. INSERM 1221, Institut Pasteur, Paris, 75015, France
4. Laboratoire d'Immunologie Clinique, Institut Curie, Paris, 75005, France.
5. Centre d'Investigation Clinique en Biothérapie, Institut Curie (CIC-BT1428), Paris, 75005, France
6. Unit of Molecular Virology and Vaccinology, Virology Department, Institut Pasteur, Paris, 75015, France
7. Innovation Laboratory: Vaccines, Institut Pasteur, Paris, 75015, France
8. Direction of the Clinical Research, Institut Curie, Paris, 75005, France.
9. Medical Oncology Department, Institut Curie, Paris, 75005, France
10. UVSQ, Paris-Saclay University, Saint-Cloud, 92210, France
11. Biometry, Institut Curie, Paris, 75005, France
12. INSERM U932, PSL University, Institut Curie, Paris, 75005, France
13. Production and purification of recombinant proteins technological platform, Paris, 75015, France
14. Unit of Antibody in Therapy and Pathology, Institut Pasteur, Paris, 75015, France
15. Unit of Chemistry and Biocatalysis, Institut Pasteur, UMR 3523 CNRS, Paris, 75015, France
16. Unit of Cell Biology and Cancer, Institut Curie, Paris, 75005, France

Anna et al, Supplementary Appendix 2

This questionnaire was submitted with the description of the study for ethical approval by the Comité de Protection des Personnes Méditerranée III (2020.04.18 bis_ 20.04.16.49458, 27/4/2020) registered in the clinical trial database (NCT04369066). The items of this questionnaire were recorded in the Curiosa Web-based survey.

Questionnaire

- Working Site (Paris Hospital/Saint Cloud Hospital/Orsay site/Administrative Staff/Research Center)
- Age (years)
- Weight (kg)
- Height (cm)
- Confinement (Yes/No)
- Confinement start (date)
- Working mode at the time of the blood withdrawal (Site /Institute and home-office)
- Symptoms (fever, tiredness, cough, shortness of breath, difficulty breathing, muscle aches, conjunctivitis, rhinitis, anosmia/ageusia, unusual headache, digestive disorders (vomiting, diarrhea))
- Symptom onset (date)
- Symptom end (date)
- PCR_assay done (yes/no)
- PCR_assay (date)
- PCR result (Positive/Negative)
- Treatment (hospitalization/systemic treatment)
- Hospitalization (days)
- Intensive care unit (yes/no)

SUPPORTING INFORMATION : APPENDIX 3

This appendix has been provided by the authors to give readers additional information about their work.

Supplement to: Anna, Goyard, et al.

High seroprevalence but short-lived immune response to SARS-CoV-2 infection in Paris

François Anna^{1*}, Sophie Goyard^{2,3*}, Ana Ines Lalanne^{4,5*}, Fabien Nevo^{1,6}, Marion Gransagne⁷, Philippe Souque⁶, Delphine Louis^{4,5}, Véronique Gillon⁸, Isabelle Turbiez⁸, François-Clement Bidard^{5,9,10}, Aline Gobillion¹¹, Alexia Savignoni¹¹, Maude Guillot-Delost^{5,12}, François Dejardin¹³, Evelyne Dufour¹³, Stéphane Petres¹³, Odile Richard-Le Goff¹⁴, Zaineb Choucha⁷, Olivier Helynck¹⁵, Yves L. Janin¹⁵, Nicolas Escriou⁷, Pierre Charneau^{1,6}, Franck Perez¹⁶, Thierry Rose^{2,3**}, Olivier Lantz^{4,5,12**}

Author affiliations

1. Theravectys, Paris, France
2. Unit of Lymphocyte Cell Biology, Immunology Department, Institut Pasteur, Paris, 75015, France
3. INSERM 1221, Institut Pasteur, Paris, 75015, France
4. Laboratoire d'Immunologie Clinique, Institut Curie, Paris, 75005, France.
5. Centre d'Investigation Clinique en Biothérapie, Institut Curie (CIC-BT1428), Paris, 75005, France
6. Unit of Molecular Virology and Vaccinology, Virology Department, Institut Pasteur, Paris, 75015, France
7. Innovation Laboratory: Vaccines, Institut Pasteur, Paris, 75015, France
8. Direction of the Clinical Research, Institut Curie, Paris, 75005, France.
9. Medical Oncology Department, Institut Curie, Paris, 75005, France
10. UVSQ, Paris-Saclay University, Saint-Cloud, 92210, France
11. Biometry, Institut Curie, Paris, 75005, France
12. INSERM U932, PSL University, Institut Curie, Paris, 75005, France
13. Production and purification of recombinant proteins technological platform, Paris, 75015, France
14. Unit of Antibody in Therapy and Pathology, Institut Pasteur, Paris, 75015, France
15. Unit of Chemistry and Biocatalysis, Institut Pasteur, UMR 3523 CNRS, Paris, 75015, France
16. Unit of Cell Biology and Cancer, Institut Curie, Paris, 75005, France

SUPPLEMENTARY APPENDIX 3 to Anna, et al.

High seroprevalence but short-lived immune response to SARS-CoV-2 infection in Paris

Individuals			LuLISA IgG/N	positive if >13400 RLU/s	Threshold 98% specificity	Symptoms	Symptoms from questionnaire													RT-qPCR			
ID	sex	age	LuLISA IgG/S	positive if >8400 RLU/s		negative=0	any symptom	Fever	Tiredness	Cough	Short breath	Difficulty breathi	Muscle ache	Conjunctivitis	Rhinitis	nosmia/ageus	nussual	headac	gastro	disord	RT-qPCR	RT-qPCR results	
			PNT	MO	seropositiv	positive if > 0 %	M1	M1	M1	M1	M1	M1	M1	M1	M1	M1	M1	M1	M1	M1	M1	no=0	negative=0
			test	MO	y MO																yes=1	positive=1	
1	F	39-82	1471	1384	0	0	5325	1123	0	0	1	0	0	0	1	0	0	1	0	1	0	0	
2	F	19-38	6518	3614	0	0	#N/A	#N/A	#N/A	#N/A	1	0	1	1	0	0	1	0	1	0	1	0	
3	F	39-82	3142	2333	0	0	1692	2391	0	0	1	1	1	1	0	0	1	0	1	1	1	0	
4	F	19-38	2978	706	0	0	1322	1132	0	0	1	0	1	0	0	0	0	1	1	0	1	0	
5	F	39-82	3680	2039	0	0	2457	2349	0	0	1	0	0	0	0	0	0	0	1	1	0	0	
6	F	19-38	27456	42832	67	1	25056	64694	85	1	1	1	1	0	1	0	0	1	1	1	1	1	
7	F	19-38	3876	1002	0	0	1830	531	0	0	0	0	0	0	0	0	0	0	0	0	0	0	
8	F	39-82	2230	750	0	0	#N/A	#N/A	#N/A	#N/A	1	0	1	1	1	1	1	0	0	1	1	0	
9	F	39-82	4825	834	0	0	2066	728	0	0	1	0	1	0	0	0	0	0	0	0	0	0	
10	F	39-82	3386	2326	0	0	#N/A	#N/A	#N/A	#N/A	1	0	1	1	1	0	0	0	0	1	1	0	
11	F	19-38	1728	651	0	0	1064	1356	0	0	0	0	0	0	0	0	0	0	0	0	0	0	
12	F	19-38	5639	2099	0	0	5485	1939	0	0	1	1	1	1	0	0	1	0	0	1	0	0	
13	F	19-38	4308	1222	0	0	#N/A	#N/A	#N/A	#N/A	1	1	1	0	0	0	0	0	0	1	0	0	
14	F	19-38	1762	1341	0	0	1587	834	0	0	1	0	1	0	1	0	0	0	0	0	0	0	
15	F	39-82	2340	1366	0	0	2265	1230	0	0	0	0	0	0	0	0	0	0	0	0	0	0	
16	F	19-38	2534	768	0	0	2280	895	0	0	1	0	1	0	0	0	1	0	1	1	1	0	
17	F	19-38	2678	1279	0	0	#N/A	#N/A	#N/A	#N/A	1	0	1	1	1	1	0	0	1	1	1	0	
18	F	19-38	3124	1418	0	0	#N/A	#N/A	#N/A	#N/A	0	0	0	0	0	0	0	0	0	0	0	0	
19	F	19-38	19275	13925	8	1	#N/A	#N/A	#N/A	#N/A	0	0	0	0	0	0	0	0	0	0	0	0	
20	M	39-82	61536	26285	70	1	18885	15880	12	1	1	1	0	0	1	0	0	1	1	1	1	1	
21	F	39-82	3809	3197	0	0	2968	978	0	0	1	0	1	0	1	1	0	0	1	0	0	0	
22	F	39-82	4161	787	0	0	3414	699	0	0	0	0	0	1	0	0	0	0	0	0	0	0	
23	F	39-82	7182	2614	0	0	6889	2012	18	1	0	0	0	0	0	0	0	0	0	0	0	0	
24	F	39-82	6357	973	0	0	2585	924	12	1	1	0	1	0	0	0	1	0	1	0	1	0	
25	F	39-82	5740	1430	0	0	2166	1557	0	0	1	0	1	0	0	0	0	0	0	0	0	0	
26	F	39-82	2065	797	0	0	1898	1340	0	0	0	0	0	0	0	0	0	0	0	0	0	0	
27	M	19-38	2379	1198	0	0	#N/A	#N/A	#N/A	#N/A	1	0	0	0	0	0	0	1	0	0	0	0	
28	F	19-38	2642	2064	0	0	3523	3987	0	0	1	0	0	1	0	0	0	0	0	0	0	0	
29	M	19-38	1442	592	0	0	1081	779	0	0	1	0	1	0	0	0	0	0	0	0	0	0	
30	F	39-82	2727	723	0	0	1662	1250	0	0	1	0	1	1	1	0	0	0	1	0	1	0	
31	F	39-82	8958	1061	0	0	7118	818	0	0	1	1	1	1	0	0	0	0	1	0	0	0	
32	F	19-38	50372	63596	89	1	#N/A	#N/A	#N/A	#N/A	1	0	1	1	1	0	1	0	1	0	1	1	
33	F	39-82	170080	181385	99	1	134053	258571	80	1	1	1	1	0	1	1	1	1	1	0	1	1	
34	F	19-38	1184	1625	0	0	735	1093	0	0	1	0	0	1	0	0	0	1	0	1	0	0	
35	F	19-38	1302	1679	0	0	#N/A	#N/A	#N/A	#N/A	1	0	1	0	1	0	0	1	0	1	0	0	
36	F	39-82	101108	104405	96	1	91483	88102	98	1	1	0	1	1	1	1	1	1	1	0	0	0	
37	F	39-82	1514	816	0	0	1119	1509	0	0	1	0	0	0	1	0	0	0	0	0	0	0	
38	F	19-38	3639	1207	0	0	3331	537	0	0	1	1	1	0	0	1	0	1	0	0	1	0	
39	F	39-82	4293	757	0	0	2991	1926	33	1	0	0	0	0	0	0	0	0	0	0	0	0	
40	F	39-82	2427	861	0	0	1043	1163	0	0	1	0	1	1	0	0	1	1	0	0	1	0	
41	M	19-38	1510	2228	0	0	#N/A	#N/A	#N/A	#N/A	0	0	0	0	0	0	0	0	0	0	0	0	
42	M	39-82	136689	33141	15	1	#N/A	#N/A	#N/A	#N/A	1	0	1	1	1	0	0	1	1	1	1	1	
43	F	39-82	4467	1388	0	0	2499	750	0	0	1	1	1	0	1	1	0	0	1	0	0	0	
44	M	39-82	2755	797	0	0	#N/A	#N/A	#N/A	#N/A	1	1	0	1	0	0	1	1	1	1	0	0	
45	F	19-38	2211	1245	0	0	750	965	0	0	1	0	1	0	0	0	0	1	0	0	0	0	
46	M	19-38	4720	682	0	0	#N/A	#N/A	#N/A	#N/A	1	0	1	1	1	0	0	1	0	0	0	0	
47	F	39-82	6642	904	0	0	3097	621	0	0	1	0	1	0	0	1	0	0	1	1	0	0	
48	F	19-38	23523	13803	63	1	7702	118340	30	1	1	1	0	1	1	1	1	1	1	0	0	0	
49	F	39-82	3767	1598	0	0	1910	1157	0	0	0	0	0	0	0	0	0	0	0	0	0	0	
50	M	39-82	317013	185033	97	1	217380	117537	98	1	1	1	1	0	0	0	0	0	0	1	0	0	
51	M	19-38	61199	36432	60	1	#N/A	#N/A	#N/A	#N/A	1	0	1	1	1	1	0	1	1	0	1	1	
52	F	19-38	31057	55494	38	1	6482	43401	44	1	1	0	1	1	0	0	0	1	1	0	1	1	
53	F	39-82	1501	1468	0	0	501	380	0	0	0	0	0	0	0	0	0	0	0	0	0	0	
54	F	39-82	4240	1047	0	0	#N/A	#N/A	#N/A	#N/A	1	0	0	0	0	0	0	0	0	0	1	0	
55	F	39-82	2852	5273	0	0	1340	982	0	0	1	0	0	0	0	0	0	0	1	0	0	0	
56	F	19-38	1670	705	0	0	1061	972	0	0	0	0	0	0	0	0	0	0	0	0	0	0	
57	F	39-82	2207	509	0	0	1047	971	0	0	0	0	0	0	0	0	0	0	0	0	0	0	
58	M	19-38	109629	24644	98	1	65895	39420	96	1	1	0	1	0	0	0	0	0	1	0	0	0	
59	M	19-38	5750	1215	0	0	4846	2345	0	0	1	0	1	0	0	0	0	0	0	0	0	0	
60	F	39-82	2944	2498	0	0	#N/A	#N/A	#N/A	#N/A	1	0	1	1	0	0	0	0	1	0	0	0	
61	M	19-38	1896	1111	0	0	#N/A	#N/A	#N/A	#N/A	1	0	1	0	0	0	0	1	0	1	1	0	
62	F	39-82	178273	62571	91	1	132619	47834	70	1	1	1	0	1	0	1	1	1	1	1	1	0	
64	F	19-38	1593	2863	0	0	#N/A	#N/A	#N/A	#N/A	0	0	0	0	0	0	0	0	0	0	0	0	
65	F	19-38	51270	46944	81	1	17512	60305	89	1	1	1	1	1	1	0	0	1	1	0	1	1	
66	F	19-38	295380	152571	98	1	178625	147803	99	1	1	1	1	1	1	0	0	1	1	1	1	0	
67	F	19-38	3803	503	0	0	#N/A	#N/A	#N/A	#N/A	1	0	1	1	1	1	0	1	0	1	1	1	
68	F	39-82	104926	46725	97	1	#N/A	#N/A	#N/A	#N/A	1	0	1	0	0	0	1	0	0	0	0	0	
69	M	39-82	3538	1835	0	0	1969	687	0	0	1	1	1	1	1	0	0	0	0	0	0	0	

148 M	39-82	8053	575	0	0	#N/A	#N/A	#N/A	#N/A	0	0	0	0	0	0	0	0	0	0	0	1	0
149 F	39-82	1972	1128	0	0	2947	1253	0	0	0	0	0	0	0	0	0	0	0	0	0	0	0
150 F	19-38	38295	60640	74	1	13061	44240	5	1	1	1	1	1	1	1	0	0	1	1	1	1	1
151 F	19-38	3773	1592	0	0	#N/A	#N/A	#N/A	#N/A	1	1	1	1	0	0	1	0	1	0	1	1	0
152 F	19-38	2212	3480	0	0	983	2387	0	0	1	1	1	1	1	1	1	0	1	0	1	1	0
153 F	39-82	5155	1381	0	0	599	398	0	0	1	0	1	1	1	1	1	1	0	1	0	1	0
154 F	19-38	2236	460	0	0	624	240	0	0	1	0	1	0	0	0	1	0	0	0	1	0	0
155 F	19-38	3091	2805	0	0	#N/A	#N/A	#N/A	#N/A	0	0	0	0	0	0	0	0	0	0	0	0	0
156 F	39-82	2931	1369	0	0	#N/A	#N/A	#N/A	#N/A	1	1	0	1	1	1	0	0	0	1	1	1	0
157 F	19-38	5056	3210	0	0	#N/A	#N/A	#N/A	#N/A	1	0	1	0	0	0	1	0	1	1	1	1	1
158 F	39-82	1511	1626	0	0	#N/A	#N/A	#N/A	#N/A	0	0	0	0	0	0	0	0	0	0	0	0	0
159 F	39-82	2945	1432	0	0	#N/A	#N/A	#N/A	#N/A	1	0	1	1	0	0	0	0	0	0	0	1	0
160 F	19-38	18151	32654	20	1	8812	23879	17	1	1	1	1	1	1	1	1	0	0	1	1	1	1
161 M	19-38	10959	13001	0	1	8229	136377	29	1	1	1	1	0	0	1	0	0	1	1	1	1	1
162 F	19-38	22031	53264	81	1	7054	48740	0	1	1	1	1	0	0	0	0	0	1	1	0	0	0
163 F	39-82	2339	1577	0	0	#N/A	#N/A	#N/A	#N/A	1	0	1	0	0	0	1	0	0	0	1	0	0
164 F	19-38	67161	59137	53	1	#N/A	#N/A	#N/A	#N/A	1	0	0	0	0	0	0	0	1	0	0	0	0
165 F	19-38	4832	1195	0	0	#N/A	#N/A	#N/A	#N/A	1	1	1	0	0	0	1	1	1	0	0	0	0
166 F	39-82	59038	84359	72	1	17424	62956	78	1	1	1	1	0	1	0	1	0	1	1	0	0	0
167 F	19-38	1428	1292	0	0	#N/A	#N/A	#N/A	#N/A	1	0	1	0	1	1	0	0	0	0	0	0	0
168 F	39-82	263693	44441	29	1	148210	24410	0	1	1	1	1	0	0	1	0	1	1	1	0	0	0
169 F	39-82	143219	34492	43	1	#N/A	#N/A	#N/A	#N/A	1	1	1	1	0	0	1	0	0	1	1	0	0
170 F	19-38	1431	1028	0	0	1396	1027	0	0	1	0	1	0	0	0	1	0	1	0	1	0	0
171 F	19-38	134772	57653	71	1	#N/A	#N/A	#N/A	#N/A	1	1	1	1	1	1	1	0	0	1	1	0	1
173 F	19-38	42325	45388	48	1	21224	23575	39	1	0	0	0	1	0	1	0	1	1	1	0	1	0
174 F	39-82	106782	56216	86	1	20416	54260	97	1	1	1	1	1	1	1	0	1	1	1	1	1	0
175 F	19-38	16282	20943	37	1	6282	32131	0	1	1	1	1	0	1	0	1	0	0	1	1	0	0
176 F	39-82	1927	1332	0	0	1493	1371	0	0	1	0	1	0	0	0	1	1	0	0	1	0	0
177 F	19-38	3198	1021	0	0	2051	1137	0	0	0	0	0	0	0	0	0	0	0	0	0	0	0
178 F	19-38	5380	1230	0	0	1015	1033	0	0	1	1	1	1	0	0	0	1	0	1	0	0	0
179 F	19-38	7853	989	0	0	3511	565	0	0	1	0	1	0	0	0	1	0	0	0	1	0	0
180 F	39-82	6589	4699	0	0	4675	3568	0	0	1	0	1	0	0	0	0	0	0	0	1	0	0
181 F	39-82	9207	1518	0	0	3941	1679	0	0	1	0	1	0	0	0	1	1	1	0	1	1	0
182 F	19-38	3841	1906	0	0	320	872	0	0	1	0	0	0	0	0	1	0	1	0	1	0	0
183 F	39-82	4177	4325	0	0	2057	2843	0	0	0	0	0	0	0	0	0	0	0	0	0	0	0
184 F	19-38	2341	1229	0	0	2895	3450	0	0	1	0	1	1	1	0	0	0	0	1	0	0	0
185 F	19-38	3098	1352	0	0	1861	1412	0	0	0	0	0	0	0	0	0	0	0	0	0	0	0
186 F	39-82	3751	1821	0	0	2341	2086	0	0	1	0	1	1	1	0	1	1	1	0	1	0	0
187 F	39-82	104082	152905	87	1	79907	107516	0	0	0	0	0	0	0	0	0	0	0	0	0	0	0
188 F	39-82	4801	1390	0	0	1783	1055	0	0	0	0	0	0	0	0	0	0	0	0	0	0	0
189 F	39-82	116668	210097	95	1	101509	160225	90	1	1	1	1	1	1	1	1	1	1	0	1	1	1
190 F	39-82	2122	591	0	0	#N/A	#N/A	#N/A	#N/A	1	0	0	0	0	0	0	0	0	0	0	0	0
191 F	19-38	1917	1490	0	0	1158	1688	0	0	1	0	0	0	0	0	0	0	0	1	0	1	0
192 F	39-82	1712	1050	0	0	2812	1304	0	0	0	0	0	0	0	0	0	0	0	0	0	0	0
193 F	39-82	1920	1155	0	0	1083	760	0	0	0	0	0	0	0	0	0	0	0	0	0	0	0
194 F	19-38	71371	29653	67	1	#N/A	#N/A	#N/A	#N/A	1	0	1	1	0	0	0	1	0	1	0	1	0
195 M	19-38	2199	2085	0	0	#N/A	#N/A	#N/A	#N/A	1	1	1	1	0	0	1	0	1	0	1	1	0
196 F	19-38	772	1893	0	0	#N/A	#N/A	#N/A	#N/A	0	0	0	0	0	0	0	0	0	0	0	0	0
197 M	39-82	4577	1494	0	0	2273	2782	0	0	0	0	0	0	0	0	0	0	0	0	0	0	0
198 F	19-38	255125	51975	96	1	138798	30763	94	1	0	1	1	1	1	1	0	0	0	1	0	0	0
199 F	19-38	2119	5315	0	0	#N/A	#N/A	#N/A	#N/A	1	1	1	1	1	1	1	0	1	0	1	0	1
200 M	19-38	211	576	0	0	#N/A	#N/A	#N/A	#N/A	1	1	1	0	0	0	0	0	1	0	1	1	0
201 F	19-38	137633	93690	89	1	29891	84517	73	1	1	1	1	0	0	1	0	1	1	1	0	0	0
202 F	39-82	3138	5077	0	0	3060	3890	0	0	1	0	1	0	0	0	0	0	0	0	0	0	0
203 F	19-38	2306	789	0	0	1170	955	0	0	1	0	1	1	1	1	0	0	0	0	1	1	0
204 F	19-38	1765	1523	0	0	#N/A	#N/A	#N/A	#N/A	1	0	1	0	0	0	1	0	1	0	0	0	0
205 F	39-82	25474	21638	85	1	12465	19279	82	1	1	1	1	0	1	1	1	0	0	1	1	0	1
206 F	39-82	7912	1925	0	0	1816	1915	0	0	1	0	1	0	0	0	0	0	0	1	0	0	0
207 M	39-82	5609	3546	0	0	5219	5580	0	0	1	1	0	1	0	0	0	0	0	0	0	0	0
208 M	39-82	8048	777	0	0	7970	1001	4	1	0	0	1	1	0	0	1	0	1	0	0	0	0
209 M	39-82	6990	690	0	0	6319	535	0	0	0	0	0	0	0	0	0	0	0	0	0	1	0
210 F	39-82	3883	4777	0	0	2624	2352	0	0	1	0	1	0	1	0	0	0	0	0	1	1	1
211 F	39-82	3546	902	0	0	1715	667	0	0	1	1	1	1	0	0	1	1	1	0	1	0	0
212 F	19-38	3450	672	0	0	#N/A	#N/A	#N/A	#N/A	0	0	0	0	0	0	0	0	0	0	0	0	0
213 F	19-38	2752	2178	0	0	479	334	0	0	0	0	0	0	0	0	0	0	0	0	0	0	0
214 F	39-82	5289	1311	0	0	6081	1626	0	0	0	0	0	0	0	0	0	0	0	0	0	0	0
215 F	39-82	9404	1779	0	0	5974	3320	0	0	1	1	1	1	1	1	1	0	0	1	0	0	0
216 F	19-38	1802	651	0	0	#N/A	#N/A	#N/A	#N/A	1	1	1	1	1	0	0	1	0	0	0	0	0
218 F	19-38	3410	1614	0	0	4176	2790	0	0	0	0	0	0	0	0	0	0	0	0	0	0	0
220 F	39-82	4927	2494	0	0	4989	3518	0	0	1	0	0	0	0	0	0	0	0	0	1	0	0
221 F	19-38	2823	1226	0	0	1001	2307	0	0	1	0	1	1	1	1	1	0	0	0	0	0	0
222 F	19-38	140418	109849	93	1	101211	75975	67	1	1	0	1	1	0	1	1	0	0	1	0	1	1
223 F	39-82	6956	1271	0	0	8408	893	0	0	1	0	1	1	1	0	0	1	0	0	1	1	0
224 F	19-38	4557	7407	0	0	2378	9080	0	0	1	1	1	1	0	0	1	0	0	1	1	0	0
225 F	39-82	4454	3857	0	0	2088	2380	0	0	0	0	0	0	0	0	0	0	0	0	0	0	0
226 F	39-82	4499	871	0	0	2853	1047	0	0	1	0	1	1	0	0	0	1	0	0	0	0	0

547 F	19-38	62242	26170	40	1	#N/A	#N/A	#N/A	#N/A	1	0	0	1	0	0	1	0	1	1	1	0	1	0
548 F	19-38	1697	677	0	0	1184	1912	0	0	0	0	0	1	0	0	0	0	0	0	0	0	1	0
549 F	19-38	5135	3463	0	0	6647	5514	0	0	1	0	1	0	0	0	0	0	0	0	0	1	1	0
550 M	19-38	21993	9451	0	1	14531	22031	0	1	1	0	0	0	0	0	0	0	1	0	1	0	0	0
551 F	39-82	4350	796	0	0	1834	1019	0	0	0	0	0	0	0	0	0	0	0	0	0	0	0	0
552 M	19-38	2118	624	0	0	1121	690	0	0	1	0	1	0	0	0	1	0	0	0	0	0	0	0
553 M	39-82	989	1031	0	0	1006	1165	0	0	1	1	0	1	0	0	0	0	0	0	0	0	0	0
554 F	19-38	1847	1057	0	0	2451	1340	0	0	1	0	0	0	0	0	1	0	0	0	1	0	0	0
555 F	39-82	igG/igM positi	95001	47615	85	1	54128	25084	77	1	0	1	0	1	1	1	0	0	1	1	0	1	1
556 f	19-38	4573	2083	0	0	#N/A	#N/A	#N/A	#N/A	1	0	1	0	0	0	0	0	0	0	0	1	1	0
557 F	19-38	2262	1978	0	0	#N/A	#N/A	#N/A	#N/A	0	0	0	0	0	0	0	0	0	0	0	0	0	0
558 F	39-82	97111	47767	55	1	#N/A	#N/A	#N/A	#N/A	1	0	1	0	0	0	0	0	1	1	0	0	0	0
559 F	19-38	1433	2001	0	0	#N/A	#N/A	#N/A	#N/A	1	0	1	0	0	0	0	0	0	0	0	0	0	0
560 F	19-38	2034	798	0	0	4450	571	0	0	1	0	1	0	0	0	0	0	0	0	0	0	0	0
561 F	39-82	19965	54292	88	1	#N/A	#N/A	#N/A	#N/A	1	1	1	1	1	1	0	1	1	1	1	1	1	0
562 F	19-38	3231	383	0	0	1270	926	0	0	1	0	0	0	0	0	0	1	0	1	1	1	1	0
563 F	19-38	2000	743	0	0	3299	1429	0	0	0	0	0	0	0	0	0	0	0	0	0	0	0	0
564 F	39-82	igG/igM positi	19953	16924	45	1	9296	13619	0	1	0	0	0	0	0	1	1	1	0	0	0	0	0
565 F	19-38	1399	716	0	0	999	286	0	0	0	0	0	0	0	0	0	0	0	0	0	0	0	0
566 M	19-38	2005	599	0	0	753	697	0	0	0	0	0	0	0	0	0	0	0	0	0	0	0	0
567 F	19-38	1002	966	0	0	834	1088	0	0	1	1	1	1	1	0	0	0	0	0	1	1	0	0
568 F	39-82	928	964	0	0	1932	2904	0	0	0	0	0	0	0	0	0	0	0	0	0	0	0	0
569 F	19-38	807	476	0	0	#N/A	#N/A	#N/A	#N/A	1	1	1	0	0	0	0	0	0	0	1	0	0	0
570 F	39-82	1585	679	0	0	1344	1151	0	0	0	0	0	0	0	0	0	0	0	0	0	0	0	0
571 F	39-82	32716	60426	78	1	18017	47705	85	1	1	0	0	0	0	0	0	1	1	0	0	0	0	0
572 F	19-38	26371	15796	2	1	36987	27909	13	1	1	0	0	0	0	1	0	0	1	1	1	1	1	1
573 F	39-82	1766	389	0	0	#N/A	#N/A	#N/A	#N/A	0	0	0	0	0	0	0	0	0	0	0	0	0	0
574 F	19-38	3581	1294	0	0	#N/A	#N/A	#N/A	#N/A	1	0	1	1	1	1	1	0	1	0	1	0	0	0
575 F	19-38	3873	2019	0	0	#N/A	#N/A	#N/A	#N/A	1	0	1	0	0	0	0	0	0	0	0	0	0	0
576 F	39-82	negative	1610	641	0	0	#N/A	#N/A	#N/A	#N/A	1	0	1	0	0	0	1	0	1	1	1	1	0
577 F	39-82	4142	6382	0	0	#N/A	#N/A	#N/A	#N/A	0	0	0	0	0	0	0	0	0	0	0	0	0	0
578 F	19-38	6359	1173	0	0	2621	1442	0	0	1	0	1	1	0	1	0	0	1	0	0	0	0	0
579 F	19-38	4681	1702	0	0	3269	2079	0	0	1	0	1	0	0	0	0	0	0	1	0	0	0	0
580 F	39-82	110055	105382	85	1	66866	82251	37	1	1	1	1	0	1	1	1	0	0	1	1	1	1	1
581 F	19-38	4931	994	0	0	1318	1656	0	0	1	0	0	0	0	0	0	0	0	0	0	0	0	0
582 F	39-82	9310	3359	0	0	2044	1787	0	0	1	0	1	1	0	0	0	0	0	1	0	1	0	0
583 F	39-82	negative	5135	1405	0	0	1242	725	0	0	0	0	0	0	0	0	0	0	0	0	0	0	0
584 M	19-38	negative	3218	829	30	1	406	312	0	0	0	0	0	1	0	0	0	0	0	0	0	0	0
585 M	39-82	697	436	0	0	1522	973	0	0	0	0	0	0	0	0	0	0	0	0	0	0	0	0
586 F	39-82	negative	2998	955	0	0	1797	1330	0	0	1	0	1	1	1	1	0	0	1	1	1	0	0
587 F	19-38	5880	884	0	0	2811	1354	0	0	1	0	1	0	0	0	0	0	0	1	1	1	0	0
588 M	39-82	6263	1840	0	0	#N/A	#N/A	#N/A	#N/A	0	0	0	0	0	0	0	0	0	0	0	0	0	0
589 M	19-38	2759	868	0	0	#N/A	#N/A	#N/A	#N/A	1	1	1	0	0	0	0	0	0	0	1	0	0	0
590 F	39-82	3187	2017	0	0	2533	1468	0	0	1	0	0	0	0	0	0	0	1	0	1	0	1	0
591 M	19-38	571	550	0	0	#N/A	#N/A	#N/A	#N/A	1	0	0	0	0	1	0	0	0	0	0	1	1	0
592 F	19-38	4025	1165	0	0	2979	805	0	0	1	1	1	1	0	0	1	0	1	0	1	0	0	0
593 F	39-82	6497	804	0	0	7002	1658	0	0	0	0	0	0	0	0	0	0	0	0	0	0	0	0
594 F	19-38	808	662	0	0	448	787	0	0	1	1	1	1	1	1	1	0	1	0	1	1	0	0
595 M	19-38	4268	665	0	0	1206	576	0	0	1	0	1	1	0	0	0	1	0	1	1	1	0	0
596 M	39-82	5302	920	0	0	#N/A	#N/A	#N/A	#N/A	1	0	1	1	1	0	1	0	0	0	1	0	0	0
597 F	19-38	3597	4041	0	0	#N/A	#N/A	#N/A	#N/A	1	0	1	0	0	0	0	0	0	0	1	1	0	0
598 F	19-38	1656	663	0	0	2108	742	0	0	1	0	1	0	0	0	1	1	0	1	0	1	0	0
599 F	39-82	2489	1518	0	0	763	975	0	0	0	0	0	0	0	0	0	0	0	0	0	0	0	0
600 F	39-82	5009	1877	0	0	4083	1612	0	0	0	0	0	0	0	0	0	0	0	0	0	0	0	0
601 F	39-82	7994	2217	0	0	#N/A	#N/A	#N/A	#N/A	1	0	1	0	0	0	0	1	0	0	1	0	1	0
602 F	39-82	9486	1660	0	0	6720	1712	0	0	1	0	1	0	0	0	1	0	0	0	1	0	0	0
603 F	39-82	4565	688	0	0	#N/A	#N/A	#N/A	#N/A	1	0	1	1	0	0	0	0	0	0	1	1	0	0
604 F	39-82	8733	952	0	0	4934	641	0	0	1	0	1	0	0	0	0	0	0	0	1	0	0	0
605 F	19-38	2473	445	0	0	1819	531	0	0	0	0	0	0	0	0	0	0	0	0	0	0	0	0
606 F	19-38	38893	73484	79	1	17273	61972	70	1	1	0	0	1	0	0	1	0	0	1	0	0	1	1
607 F	39-82	75217	63306	93	1	24423	37738	7	1	1	1	1	0	0	0	1	0	0	0	1	1	0	0
608 M	19-38	804	728	0	0	#N/A	#N/A	#N/A	#N/A	0	0	0	0	0	0	0	0	0	0	0	0	0	0
609 F	19-38	30065	1189	0	1	#N/A	#N/A	#N/A	#N/A	0	0	0	0	0	0	0	0	0	0	0	0	0	0
610 F	19-38	2421	635	0	0	1012	651	0	0	1	0	1	0	1	0	1	0	0	0	1	1	1	0
611 F	19-38	6512	4655	0	0	6789	4388	0	0	1	0	1	1	0	0	0	1	1	0	1	0	0	0
612 F	19-38	5845	749	0	0	2719	1209	0	0	0	0	0	0	0	0	0	0	0	0	0	0	0	0
613 F	19-38	2873	1565	0	0	2193	918	0	0	1	0	1	1	0	0	0	0	1	0	1	0	0	0
614 M	39-82	4820	4948	0	0	#N/A	#N/A	#N/A	#N/A	0	0	0	0	0	0	0	0	0	0	0	0	0	0
615 F	39-82	1572	1143	0	0	1424	2194	0	0	0	0	0	0	0	0	0	0	0	0	0	0	0	0
616 M	39-82	1686	487	0	0	976	1224	0	0	0	0	0	0	0	0	0	0	0	0	0	0	0	0
617 F	19-38	144548	209350	98	1	78465	161609	18	1	1	1	0	0	0	0	1	0	0	1	0	0	1	1
618 F	19-38	2368	1584	0	0	#N/A	#N/A	#N/A	#N/A	1	0	1	1	1	1	0	0	0	1	1	0	0	0
619 F	19-38	11640	3595	0	1	10999	2921	3	1	0	0	0	0	0	0	0	0	0	0	0	0	0	0
620 F	19-38	10621	11447	20	1	13188	18242	27	1	1	0	1	0	0</									

624 F	19-38	2439	1775	0	0	2231	1328	0	0	1	0	1	0	0	0	0	0	0	0	1	0	0
625 M	19-38	6245	1149	0	0	#N/A	#N/A	#N/A	#N/A	0	0	0	0	0	0	0	0	0	0	0	0	0
626 F	39-82	1686	2461	0	0	2219	1278	0	0	0	0	0	0	0	0	0	0	0	0	0	0	0
627 F	19-38	1595	1871	0	0	3670	1866	0	0	0	0	0	0	0	0	0	0	0	0	0	0	0
628 M	39-82	2691	448	0	0	1046	692	0	0	1	0	0	0	0	0	0	0	0	1	0	0	0
629 M	39-82	1386	2662	0	0	#N/A	#N/A	#N/A	#N/A	1	1	1	1	0	0	0	0	1	0	0	1	0
630 M	39-82	3994	3302	0	0	4729	6182	0	0	0	0	0	0	0	0	0	0	0	0	0	0	0
631 M	39-82	43894	23211	93	1	11076	20487	38	1	1	1	0	0	0	1	0	0	0	0	0	0	1
632 F	39-82	1270	894	0	0	#N/A	#N/A	#N/A	#N/A	1	0	1	0	1	0	0	0	1	0	0	0	0
633 F	19-38	47560	141683	95	1	21984	96397	14	0	0	0	0	0	0	0	0	0	0	0	0	0	0
634 F	19-38	3349	590	0	0	#N/A	#N/A	#N/A	#N/A	0	0	0	0	0	0	0	0	0	0	0	0	0
635 F	39-82	1744	557	0	0	4638	557	0	0	0	0	0	0	0	0	0	0	0	0	0	0	0
636 F	19-38	23758	42708	46	1	15570	36421	2	1	1	1	1	0	1	0	0	0	1	1	1	1	1
637 F	19-38	1800	719	0	0	#N/A	#N/A	#N/A	#N/A	1	0	1	0	0	0	0	0	1	0	1	0	0
638 F	19-38	1908	679	0	0	1193	807	0	0	1	0	1	1	0	0	0	1	0	1	0	0	1
639 F	19-38	4839	510	0	0	2042	629	0	0	0	0	0	0	0	0	0	0	0	0	0	0	0
640 F	39-82	1907	917	0	0	1809	1316	0	0	1	0	1	0	1	1	0	0	0	0	1	1	1
641 F	19-38	2575	1453	0	0	1219	488	0	0	1	0	0	0	0	0	0	0	0	0	1	0	0
642 F	19-38	4288	885	0	0	2305	1401	0	0	1	0	0	0	0	0	0	0	0	0	0	1	0
643 F	39-82	3610	1014	0	0	760	413	0	0	1	0	0	0	0	0	1	0	0	0	1	0	0
644 F	19-38	2850	2025	0	0	1091	597	0	0	1	1	1	0	0	0	1	0	0	0	1	1	0
645 F	19-38	1107	1065	0	0	1011	1368	0	0	0	1	1	0	0	0	0	0	0	0	1	1	0
646 F	19-38	4302	820	0	0	1801	899	0	0	1	0	0	1	0	0	0	0	1	1	1	0	0
647 F	19-38	5034	3695	0	0	1546	2836	0	0	0	0	0	0	0	0	0	0	0	0	0	0	0
648 M	19-38	22061	48793	85	1	20540	55355	86	1	1	1	0	0	0	1	0	1	0	1	0	1	0
649 F	19-38	4190	1213	0	0	764	530	0	0	1	0	0	0	0	0	0	0	0	0	1	0	0
650 F	19-38	2864	890	0	0	#N/A	#N/A	#N/A	#N/A	1	0	0	0	0	0	0	0	1	0	1	1	0
651 F	39-82	1528	4951	0	0	710	1971	0	0	1	0	1	0	0	0	1	0	0	1	0	0	0
652 F	19-38	3837	575	0	0	1412	1934	0	0	1	0	1	0	0	0	0	0	0	0	1	0	0
653 M	19-38	2127	404	0	0	839	197	0	0	1	0	0	0	0	0	0	0	0	0	1	0	0
654 F	39-82	7549	542	0	0	2714	693	0	0	0	0	0	0	0	0	0	0	0	0	0	0	0
655 F	39-82	6660	1169	0	0	7378	1547	0	0	1	0	0	0	1	1	0	0	0	1	1	0	0
656 F	19-38	2874	1385	0	0	2337	1188	0	0	0	0	0	0	0	0	0	0	0	0	0	0	0
657 F	39-82	1136	455	0	0	#N/A	#N/A	#N/A	#N/A	0	0	0	0	0	0	0	0	0	0	0	0	0
658 F	39-82	1722	639	0	0	#N/A	#N/A	#N/A	#N/A	0	0	0	0	0	0	0	0	0	0	0	0	0
659 F	19-38	1369	806	0	0	733	482	0	0	0	0	0	0	0	0	0	0	0	0	0	0	0
660 F	19-38	3030	3406	0	0	4156	2058	0	0	1	0	1	0	1	1	0	0	0	1	0	0	0
661 F	19-38	844	578	0	0	1094	589	0	0	1	1	1	0	1	1	1	0	0	0	1	1	1
662 F	39-82	744	776	0	0	2359	1040	0	0	0	0	0	0	0	0	0	0	0	0	0	0	0
663 M	19-38	1182	963	0	0	#N/A	#N/A	#N/A	#N/A	0	0	0	0	0	0	0	0	0	0	0	0	0
664 F	39-82	5474	1317	0	0	3212	2522	0	0	0	0	0	0	0	0	0	0	0	0	0	0	0
665 F	39-82	3335	4270	0	0	#N/A	#N/A	#N/A	#N/A	1	1	1	0	0	1	1	1	0	1	1	0	0
666 F	39-82	2238	476	0	0	4813	735	2	1	0	0	0	0	0	0	0	0	0	0	0	0	0
667 F	19-38	2259	1006	0	0	#N/A	#N/A	#N/A	#N/A	1	0	1	0	0	0	0	0	1	0	1	0	0
668 F	19-38	3744	4135	0	0	2222	1381	0	0	0	0	0	0	0	0	0	0	0	0	0	0	0
669 M	39-82	491	1682	0	0	224	278	0	0	0	0	0	0	0	0	0	0	0	0	0	0	0
670 F	39-82	1952	410	0	0	1461	546	0	0	0	0	0	0	0	0	0	0	0	0	0	0	0
671 M	19-38	3665	3978	0	0	7754	2285	0	0	0	0	0	0	0	0	0	0	0	0	0	0	0
672 F	39-82	2356	2567	0	0	1895	1888	0	0	0	0	0	0	0	0	0	0	0	0	0	0	0
673 F	39-82	4104	2343	0	0	2696	1354	0	0	0	0	0	0	0	0	0	0	0	0	0	0	1
674 F	19-38	18251	53897	82	1	12418	40410	32	1	1	0	1	1	0	0	0	1	1	1	1	0	0
675 F	19-38	2676	2109	0	0	4116	1686	0	0	0	0	0	0	0	0	0	0	0	0	0	0	0
676 F	19-38	1570	1636	0	0	1579	1614	0	0	0	0	0	0	0	0	0	0	0	0	0	0	0
677 F	39-82	3027	406	0	0	3182	915	0	0	0	0	0	0	0	0	0	0	0	0	0	0	0
678 F	19-38	2301	2225	0	0	2273	1197	0	0	0	0	0	0	0	0	0	0	0	0	0	0	0
679 F	19-38	6584	5913	0	0	2968	3376	0	0	0	0	0	0	0	0	0	0	0	0	0	0	0
680 F	39-82	2351	837	0	0	#N/A	#N/A	#N/A	#N/A	0	0	0	0	0	0	0	0	0	0	0	0	0
681 F	39-82	2752	4318	0	0	1146	1192	0	0	1	0	1	0	1	0	0	0	0	0	1	1	0
682 M	39-82	2575	1070	0	0	#N/A	#N/A	#N/A	#N/A	0	0	0	0	0	0	0	0	0	0	0	0	0
683 M	39-82	1447	451	0	0	1247	460	0	0	1	0	0	0	0	0	1	0	0	0	0	1	0
684 F	39-82	531	479	0	0	604	705	0	0	0	0	0	0	0	0	0	0	0	0	0	0	0
685 F	19-38	43606	139083	99	1	29197	128926	93	1	1	1	0	0	0	1	0	1	1	1	1	1	0
686 F	39-82	177989	234405	99	1	78196	104388	0	1	1	1	1	1	1	0	0	0	0	0	0	1	1
687 F	19-38	2316	601	0	0	1909	876	0	0	1	0	1	0	0	1	0	0	0	1	0	1	0
688 F	39-82	1731	831	0	0	1331	642	0	0	0	0	0	0	0	0	0	0	0	0	0	0	0
689 M	39-82	2131	1075	0	0	1476	1545	0	0	0	0	0	0	0	0	0	0	0	0	0	0	0
690 F	39-82	9179	2207	0	0	3028	1339	0	0	0	0	0	0	0	0	0	0	0	0	0	0	0
691 F	19-38	28929	7501	0	1	#N/A	#N/A	#N/A	#N/A	1	0	1	0	0	0	0	0	0	0	0	0	0
692 F	19-38	6183	1452	0	0	#N/A	#N/A	#N/A	#N/A	0	0	0	1	0	0	0	0	0	0	0	0	0
693 F	19-38	2208	858	0	0	907	979	0	0	0	0	0	1	0	0	0	0	0	0	0	1	0
694 F	19-38	5354	1761	0	0	2625	2503	0	0	1	0	0	0	0	0	0	0	0	1	0	0	0
695 F	19-38	7518	528	0	0	6097	478	0	0	0	0	0	0	0	0	0	0	0	0	0	0	0
696 M	19-38	4079	4123	0	0	4925	6109	0	0	1	1	1	1	1	1	0	0	0	1	0	1	0
697 F	39-82	4992	2397	0	0	1644	1835	6	1	0	0	0	0	0	0	0	0	0	0	0	0	0
698 F	19-38	6353	1887	0	0	2754	2236	0	0	0	0	0	0	0	0	0	0	0	0	0	0	0
699 F	19-38	1444	1032	0	0	5566	938	0	0	1	0	1	0	0	0	0	0	0	0	1	0	0
700 F	39-82	3212	543	0	0	609	309	0	0	0												

1086 M	19-38	6442	1206	0	0	2913	671	0	0	1	0	0	0	0	0	0	0	0	1	0	0	
1087 F	19-38	2366	1709	0	0	399	788	0	0	1	0	0	0	0	0	0	0	0	0	1	0	0
1088 M	19-38	1970	1191	0	0	#N/A	#N/A	#N/A	#N/A	1	0	1	1	0	0	0	0	0	0	1	0	0
1089 M	19-38	4947	29294	59	1	4637	59063	0	1	1	0	0	0	0	0	0	0	0	1	0	0	
1090 F	39-82	1963	1254	0	0	1356	1032	0	1	0	0	1	0	1	1	1	0	0	0	1	0	1
1091 F	39-82	69476	97921	97	1	90442	168451	77	1	1	1	1	1	0	0	1	0	1	0	1	0	1
1092 F	19-38	1352	1024	0	0	450	394	0	0	0	0	0	0	0	0	0	0	0	0	0	0	0
1093 F	19-38	2201	1475	0	0	1227	560	0	0	1	0	0	0	0	0	0	0	1	0	0	0	0
1094 H	19-38	4229	388	0	0	448	425	0	0	1	0	0	1	0	0	0	0	1	0	0	0	0
1095 F	19-38	8997	641	0	0	1177	977	0	0	1	1	1	1	1	0	0	0	0	0	1	1	1
1096 F	19-38	2560	815	0	0	2289	1078	0	0	0	0	0	0	0	0	0	0	0	0	0	0	0
1097 F	19-38	8613	891	0	0	2966	664	0	0	0	0	0	0	0	0	0	0	0	0	0	0	0
1098 F	19-38	6826	571	0	0	8893	979	0	0	1	0	1	0	0	0	0	0	0	0	1	1	1
1099 H	39-82	2241	2893	0	0	702	2214	0	0	0	0	0	0	0	0	0	0	0	0	0	0	0
1100 H	19-38	1412	734	0	0	#N/A	#N/A	#N/A	#N/A	0	0	0	0	0	0	0	0	0	0	0	0	0
1101 F	19-38	4881	2109	0	0	1303	893	0	0	0	0	0	0	0	0	0	0	0	0	0	0	0
1102 F	39-82	6302	2226	0	0	#N/A	#N/A	#N/A	#N/A	0	0	0	0	0	0	0	0	0	0	0	0	0
1103 F	39-82	3652	2176	0	0	#N/A	#N/A	#N/A	#N/A	0	0	0	0	0	0	0	0	0	0	0	0	0
1104 F	39-82	874	931	0	0	772	575	0	0	0	0	0	0	0	0	0	0	0	0	0	0	0
1105 F	39-82	596	1962	0	0	904	1464	0	0	1	0	0	0	0	0	0	0	0	1	0	0	0
1106 F	19-38	4786	872	0	0	5036	1239	0	0	1	0	1	1	0	1	0	0	1	0	1	0	0
1107 F	39-82	4173	360	0	0	253	195	0	0	1	1	1	1	1	1	1	1	1	1	1	0	1
1108 F	39-82	1115	820	0	0	#N/A	#N/A	#N/A	#N/A	0	0	0	0	0	0	0	0	0	0	0	0	0
1109 M	39-82	1182	968	0	0	#N/A	#N/A	#N/A	#N/A	1	1	1	1	1	1	0	0	0	1	0	0	1
1110 F	19-38	1095	734	0	0	710	509	0	0	0	0	0	0	0	0	0	0	0	0	0	0	0
1111 F	39-82	2252	848	0	0	1549	286	0	0	1	1	1	0	1	1	1	0	0	0	1	1	0
1112 F	39-82	803	1176	0	0	#N/A	#N/A	#N/A	#N/A	1	0	0	0	0	0	0	0	0	0	0	1	0
1113 h	19-38	15802	1103	0	1	16603	1713	0	1	0	0	0	0	0	0	0	0	0	0	0	0	0
1114 H	39-82	1423	769	0	0	#N/A	#N/A	#N/A	#N/A	0	0	0	0	0	0	0	0	0	0	0	0	0
1115 F	19-38	1207	1154	0	0	1637	1071	0	0	0	0	0	0	0	0	0	0	0	0	0	0	0
1116 F	19-38	1188	1025	0	0	#N/A	#N/A	#N/A	#N/A	0	0	0	0	0	0	0	0	0	0	0	0	0
1117 F	19-38	2910	856	0	0	1002	817	0	0	0	0	0	0	0	0	0	0	0	0	0	0	0
1118 F	19-38	2067	1125	0	0	3207	789	0	0	0	0	0	0	0	0	0	0	0	0	0	0	0
1119 H	39-82	1124	1480	0	0	#N/A	#N/A	#N/A	#N/A	0	0	0	0	0	0	0	0	0	0	0	0	0
1120 F	39-82	1302	947	0	0	492	260	0	0	1	0	0	0	0	0	1	0	0	1	0	0	0
1121 F	39-82	93460	48277	7	1	#N/A	#N/A	#N/A	#N/A	1	1	1	1	1	1	1	1	1	1	1	0	0
1122 F	39-82	62893	55987	79	1	33821	67334	97	1	0	0	0	0	0	1	0	1	1	1	1	0	0
1123 F	39-82	976	545	0	0	837	892	0	0	1	0	0	1	0	0	1	0	0	0	0	0	0
1124 F	39-82	2392	625	0	0	#N/A	#N/A	#N/A	#N/A	1	0	1	0	0	0	0	0	0	0	0	0	0
1125 H	39-82	1403	432	0	0	#N/A	#N/A	#N/A	#N/A	0	0	0	0	0	0	0	0	0	0	0	0	0
1126 F	39-82	2859	548	0	0	2631	424	0	0	0	0	0	0	0	0	0	0	0	0	0	0	0
1127 F	19-38	71662	133877	83	1	30149	64832	52	1	0	0	1	1	1	1	1	0	0	1	1	0	1
1128 H	39-82	618	386	0	0	#N/A	#N/A	#N/A	#N/A	0	0	0	0	0	0	0	0	0	0	0	0	0
1129 F	19-38	878	1312	0	0	803	915	0	0	1	1	1	1	1	1	1	0	0	0	1	1	0
1130 F	39-82	764	1963	0	0	888	1246	0	0	1	0	0	0	0	0	0	0	0	0	1	0	0
1132 F	19-38	778	752	0	0	1042	731	0	0	1	0	1	1	0	0	0	0	1	0	1	0	0
1133 F	39-82	5516	1271	0	0	6674	1865	0	0	0	0	0	0	0	0	0	0	0	0	0	0	0
1134 F	39-82	1570	1026	0	0	#N/A	#N/A	#N/A	#N/A	0	0	0	0	0	0	0	0	0	0	0	0	0
1135 F	19-38	117143	129367	89	1	63169	173366	16	1	1	1	1	1	1	1	1	0	1	1	1	1	1
1136 F	39-82	1043	706	0	0	#N/A	#N/A	#N/A	#N/A	1	1	1	0	0	0	0	0	0	0	1	0	0
1137 F	19-38	685	489	0	0	1306	836	0	0	0	0	0	0	0	0	0	0	0	0	0	0	0
1138 M	19-38	21830	30085	92	1	11668	18074	24	1	1	1	1	0	1	0	0	0	0	1	0	0	0
1139 M	39-82	5887	978	0	0	2645	743	0	0	1	0	0	0	0	0	1	0	0	0	1	0	0
1140 F	19-38	755	447	0	0	1587	674	0	0	0	0	0	0	0	0	0	0	0	0	0	0	0
1141 F	39-82	1232	1478	0	0	1533	997	0	0	0	0	0	0	0	0	0	0	0	0	0	0	0
1142 M	19-38	1241	846	0	0	#N/A	#N/A	#N/A	#N/A	1	0	1	0	0	0	0	0	0	0	0	0	0
1143 M	19-38	713	1502	0	0	711	1079	0	0	0	0	0	0	0	0	0	0	0	0	0	0	0
1144 M	39-82	431	869	0	0	510	782	0	0	0	0	0	0	0	0	0	0	0	0	0	0	0
1145 M	39-82	819	1080	0	0	#N/A	#N/A	#N/A	#N/A	1	1	1	0	0	0	1	1	0	0	1	0	0
1146 M	39-82	1689	1389	0	0	3073	1444	0	0	1	0	0	0	1	0	1	1	0	0	0	0	0
1147 F	39-82	3062	692	0	0	913	791	0	0	1	0	0	0	0	0	0	0	0	0	0	0	0
1148 F	19-38	984	528	0	0	2128	1014	0	0	0	0	1	0	0	0	0	0	1	0	1	0	0
1149 M	39-82	1795	3465	0	0	2924	2868	0	0	1	1	1	1	1	1	1	0	1	1	0	0	0
1150 M	19-38	841	746	0	0	1601	1029	0	0	0	0	0	0	0	0	0	0	0	0	0	0	0
1151 F	19-38	2275	728	0	0	2257	926	0	0	1	0	1	0	0	0	0	0	0	0	0	0	0
1152 F	19-38	439	828	0	0	1847	1876	0	0	0	0	0	0	0	0	0	0	0	0	0	0	0
1153 M	39-82	1619	789	0	0	1682	1451	0	0	1	0	1	0	0	0	0	0	0	0	0	0	0
1154 F	39-82	2574	590	0	0	5544	1057	0	0	0	0	0	0	0	0	0	0	0	0	0	0	0
1155 F	19-38	1463	617	0	0	2565	879	0	0	1	1	1	0	1	1	0	0	1	0	1	0	0
1156 F	39-82	512	766	0	0	299	252	0	0	0	0	0	0	0	0	0	0	0	0	0	0	0
1157 F	19-38	2071	2446	0	0	2589	2472	0	0	0	0	0	0	0	0	0	0	0	0	0	0	0
1158 F	19-38	1963	1814	0	0	2738	1344	0	0	0	0	0	0	0	0	0	0	0	0	0	0	0
1159 F	39-82	6264	949	0	0	4687	571	0	0	0	0	0	0	0	0	0	0	0	0	0	0	0
1160 F	39-82	1462	2329	0	0	3576	657	0	0	0	0	0	0	0	0	0	0	0	0	0	0	0
1161 F	19-38	3823	2203	0	0	4381	872	0	0	1	1	0	1	0	1	0	0	1	1	1	0	0
1162 F	39-82	8293	1037	0	0	8613	1088	0	0	0	0	0	0	0	0	0	0	0	0	0	0	0
1163 M	39-82	978	594	0	0	1046	1471															

1164 F	19-38	505	616	0	0	2079	882	0	0	1	0	0	0	0	0	0	0	1	0	0	1	0
1165 F	39-82	1021	1246	0	0	1518	900	0	0	0	0	0	0	0	0	0	0	0	0	0	0	0
1166 F	19-38	411	913	0	0	1213	1745	0	0	0	0	0	0	0	0	0	0	0	0	0	0	0
1167 F	19-38	892	430	0	0	#N/A	#N/A	#N/A	#N/A	0	0	0	0	0	0	0	0	0	0	0	0	0
1168 F	39-82	504	723	0	0	387	1079	0	0	0	0	0	0	0	0	0	0	0	0	0	0	0
1169 F	19-38	1204	1218	0	0	2000	1475	0	0	1	0	1	0	0	0	0	0	1	0	0	0	0
1170 F	39-82	5557	1075	0	0	2018	977	0	0	0	0	0	0	0	0	0	0	0	0	0	0	0
1171 F	39-82	879	1695	0	0	908	1605	0	0	1	1	1	1	1	0	1	0	1	0	0	0	0
1172 M	39-82	679	471	0	0	1581	500	0	0	0	0	0	0	0	0	0	0	0	0	0	0	0
1173 M	19-38	1144	573	0	0	2046	949	0	0	0	0	0	0	0	0	0	0	0	0	0	0	0
1174 F	19-38	3579	1669	0	0	#N/A	#N/A	#N/A	#N/A	1	0	1	0	0	0	0	0	0	0	0	0	1
1175 M	39-82	6583	925	0	0	#N/A	#N/A	#N/A	#N/A	1	0	0	0	0	0	0	0	0	0	0	1	0
1176 F	19-38	3499	2234	0	0	3007	1045	0	0	1	0	1	0	1	1	1	0	1	0	1	1	1
1177 F	39-82	11742	31845	29	1	724	2328	0	0	1	0	0	0	0	0	0	0	0	1	1	0	0
1178 M	39-82	24572	99093	76	1	#N/A	#N/A	#N/A	#N/A	1	1	1	1	1	1	1	0	1	1	1	1	1
1179 M	39-82	20820	33471	14	1	1207	1823	0	0	1	1	1	1	1	1	1	0	1	1	1	1	1
1180 M	39-82	3851	570	0	0	#N/A	#N/A	#N/A	#N/A	1	0	1	0	0	0	1	0	0	0	1	0	0
1181 F	19-38	865	750	0	0	875	562	0	0	1	0	0	0	0	0	0	0	0	0	0	1	0
1182 F	19-38	3822	1051	0	0	5136	1164	0	0	1	0	1	0	0	0	0	0	0	0	0	0	0
1183 F	39-82	1552	2276	0	0	1316	3283	0	0	1	0	1	0	0	0	0	0	0	0	0	1	0
1184 F	19-38	1565	427	0	0	#N/A	#N/A	#N/A	#N/A	1	0	0	0	0	0	0	0	0	0	0	0	0
1185 F	39-82	1190	798	0	0	#N/A	#N/A	#N/A	#N/A	1	0	0	0	0	0	0	0	0	0	1	0	0
1186 F	19-38	1349	1671	0	0	3439	4486	0	0	1	0	0	1	0	0	0	0	1	0	0	0	0
1187 F	19-38	1294	1429	0	0	23857	587	0	1	0	0	0	0	0	0	0	0	0	0	0	0	0
1188 F	19-38	1964	1851	0	0	#N/A	#N/A	#N/A	#N/A	1	1	1	0	0	0	0	0	1	0	0	1	0
1189 F	39-82	619	1170	0	0	689	1064	0	0	0	0	0	0	0	0	0	0	0	0	0	0	0
1190 F	19-38	809	845	0	0	#N/A	#N/A	#N/A	#N/A	1	0	0	1	0	0	0	0	0	0	1	1	0
1191 M	19-38	72513	49416	80	1	52368	38921	0	1	1	0	0	0	0	0	0	0	1	0	0	1	0
1192 F	39-82	4410	34429	0	1	3336	52615	0	1	1	0	0	1	0	0	0	0	0	1	0	1	0
1194 M	19-38	3706	1961	0	0	1681	2346	0	0	0	0	0	0	0	0	0	0	0	0	0	0	0
1195 F	39-82	3368	4266	0	0	3546	3534	0	0	0	0	0	0	0	0	0	0	0	0	0	0	0
1196 M	19-38	1635	3319	0	0	#N/A	#N/A	#N/A	#N/A	1	0	0	1	1	1	0	1	0	1	0	1	0
1197 M	39-82	7897	479	0	0	7318	817	0	0	1	0	0	0	0	0	0	0	0	0	0	0	0
1198 F	19-38	1290	487	0	0	2029	975	0	0	1	0	0	0	0	0	0	1	0	0	0	0	0
1199 F	39-82	1985	676	0	0	2042	866	0	0	1	0	1	0	0	0	0	1	0	0	0	0	0
1200 F	19-38	1102	605	0	0	898	468	0	0	0	0	0	0	0	0	0	0	0	0	0	0	0
1201 F	19-38	1704	950	0	0	907	746	0	0	1	0	1	0	1	0	1	0	1	0	0	0	0
1202 F	19-38	1049	991	0	0	888	1745	0	0	0	0	0	0	0	0	0	0	0	0	0	0	0
1203 F	39-82	723	713	0	0	727	897	0	0	1	0	0	0	0	0	0	0	0	0	1	0	0
1204 F	19-38	24059	35639	87	1	20440	26235	9	1	1	0	1	0	1	1	1	0	1	1	1	1	0
1205 F	19-38	1725	1169	0	0	1439	500	0	0	0	0	0	0	0	0	0	0	0	0	0	0	0
1206 F	19-38	906	3886	0	0	219	244	0	0	1	1	1	1	1	1	0	0	0	0	0	1	0
1207 F	19-38	1017	1100	0	0	#N/A	#N/A	#N/A	#N/A	0	0	0	0	0	0	0	0	0	0	0	0	0
1208 F	19-38	791	691	0	0	425	439	0	0	0	0	0	0	0	0	0	0	0	0	0	0	0
1209 F	19-38	28142	30725	58	1	17772	25040	41	1	1	1	0	1	0	0	1	0	0	1	0	0	1
1210 F	39-82	1608	867	0	0	1213	1156	0	0	1	0	1	0	0	0	0	0	0	0	0	0	0
1211 F	39-82	1096	549	0	0	1977	1140	0	0	1	1	1	1	0	1	0	0	0	1	0	0	0
1212 F	39-82	1908	1178	0	0	1155	1896	0	0	0	0	0	0	0	0	0	0	0	0	0	0	0
1213 F	19-38	1010	710	0	0	856	3913	0	0	1	1	1	1	1	1	0	1	1	0	0	0	0
1214 F	39-82	921	1271	0	0	1502	1358	0	0	1	0	0	0	0	0	0	1	0	1	0	0	0
1215 F	39-82	898	1228	0	0	3356	1742	0	0	0	0	0	0	0	0	0	0	0	0	0	0	0
1216 F	19-38	2132	2685	0	0	2807	1239	0	0	0	0	0	0	0	0	0	0	0	0	0	0	0
1217 F	39-82	594	1216	0	0	690	1018	0	0	0	0	0	0	0	0	0	0	0	0	0	0	0
1218 F	19-38	870	640	0	0	2442	1285	0	0	1	0	1	0	0	0	0	0	1	0	1	0	0
1219 F	39-82	951	387	0	0	#N/A	#N/A	#N/A	#N/A	1	1	1	0	0	0	0	0	0	0	0	0	0
1220 F	39-82	935	967	0	0	1146	346	0	0	1	0	1	0	0	0	0	0	0	0	1	1	0
1221 F	19-38	1115	710	0	0	1101	597	0	0	0	0	0	0	0	0	0	0	0	0	0	0	0
1222 H	39-82	1345	422	0	0	1123	564	0	0	0	0	0	0	0	0	0	0	0	0	0	0	0
1223 F	19-38	2171	1624	0	0	#N/A	#N/A	#N/A	#N/A	1	0	0	0	0	0	0	0	0	0	0	1	0
1224 F	39-82	962	815	0	0	836	816	0	0	1	0	1	0	0	0	0	0	0	0	0	0	0
1225 F	39-82	5071	864	0	0	5589	1140	0	0	1	0	0	0	0	0	0	1	0	0	0	0	0
1226 H	39-82	715	488	0	0	#N/A	#N/A	#N/A	#N/A	1	0	1	0	0	0	1	1	0	0	0	0	0
1227 F	39-82	1190	520	0	0	1470	534	0	0	1	0	1	0	0	0	0	0	0	0	1	0	0
1228 F	39-82	930	608	0	0	717	1139	0	0	0	0	0	0	0	0	0	0	0	0	0	0	0
1229 H	39-82	2071	1207	0	0	2435	1063	0	0	1	0	1	1	1	1	0	0	0	0	1	1	0
1230 F	39-82	977	1281	0	0	#N/A	#N/A	#N/A	#N/A	1	0	1	0	0	0	0	0	0	0	0	0	0
1231 H	39-82	1154	3423	0	0	1217	866	0	0	0	0	0	0	0	0	0	0	0	0	0	0	0
1232 H	39-82	862	574	0	0	1297	537	0	0	0	0	0	0	0	0	0	0	0	0	0	0	0
1233 H	19-38	1688	2317	0	0	1982	1803	0	0	0	0	0	0	0	0	0	0	0	0	0	0	0
1234 F	19-38	2563	1021	0	0	2533	1321	0	0	1	1	0	0	0	0	1	1	0	0	1	0	0
1236 F	19-38	1494	1572	0	0	#N/A	#N/A	#N/A	#N/A	1	0	1	1	0	0	0	0	0	0	1	0	0
1237 F	39-82	579	660	0	0	914	386	0	0	0	0	0	0	0	0	0	0	0	0	0	0	0
1238 F	39-82	737	452	0	0	1810	1223	0	0	1	0	1	0	1	0	0	0	0	1	0	0	0
1239 F	39-82	2140	1770	0	0	1673	1791	0	0	1	0	1	0	0	1	0	0	0	0	0	0	0
1240 F	39-82	571	882	0	0	#N/A	#N/A	#N/A	#N/A	0	0	0	0	0	0	0	0	0	0	0	0	0
1241 H	19-38	967	1466	0	0	913	1052	0	0	0	0	0	0	0	0	0	0	0	0	0	0	0
1242 F	19-38	1267	491	0	0	1382	900															

1878 F	19-38	1806	577	0	0	#N/A	#N/A	#N/A	#N/A	0	0	0	0	0	0	0	0	0	0	0	0	0	0
1879 F	39-82	1064	348	0	0	#N/A	#N/A	#N/A	#N/A	0	0	0	0	0	0	0	0	0	0	0	0	0	0
1880 M	39-82	895	429	0	0	#N/A	#N/A	#N/A	#N/A	0	0	0	0	0	0	0	0	0	0	0	0	0	0
1881 M	19-38	923	306	0	0	#N/A	#N/A	#N/A	#N/A	0	0	0	0	0	0	0	0	0	0	0	0	0	0
1882 M	39-82	860	392	0	0	#N/A	#N/A	#N/A	#N/A	0	0	0	0	0	0	0	0	0	0	0	0	0	0
1883 F	39-82	756	1102	0	0	#N/A	#N/A	#N/A	#N/A	0	0	0	0	0	0	0	0	0	0	0	0	0	0
1884 F	39-82	1154	413	0	0	#N/A	#N/A	#N/A	#N/A	0	0	0	0	0	0	0	0	0	0	0	0	0	0
1885 F	19-38	1195	1338	0	0	#N/A	#N/A	#N/A	#N/A	1	0	1	0	0	0	0	0	0	0	0	1	0	0

0