

## ONLINE SUPPLEMENT

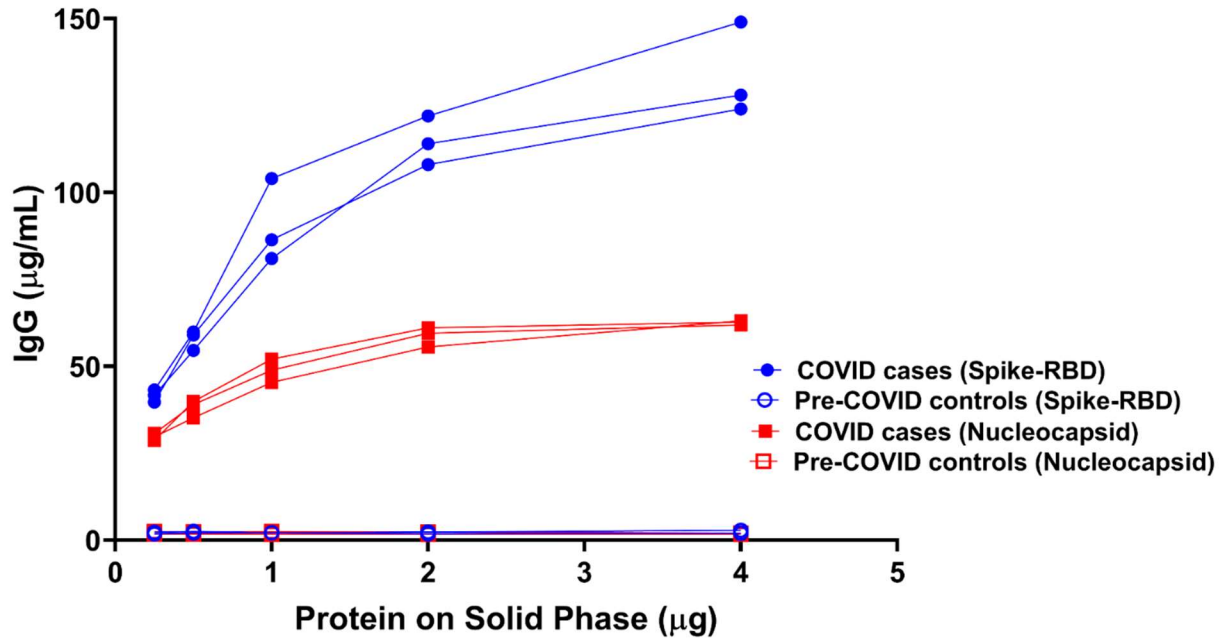
**Suppl. Table 1.** Characteristics of COVID-19 cases

Characteristics		COVID-19 Longitudinal cohort	COVID-19 Follow-up clinic*
N		17	36
Age. Median (IQR)		65 (34-69)	55 (48-66)
Sex	Male, n (%)	11 (65%)	21 (58%)
	Female, n (%)	6 (35%)	15 (42%)
Race/ ethnicity	Caucasian, n (%)	6 (35%)	6 (17%)
	Black, n (%)	2 (12%)	10 (28%)
	Hispanic, n (%)	9 (53%)	18 (50%)
Received IVIG or plasma product, n (%)		0 (0%)	3 (8%)
Admitted to Intensive care unit, n (%)		15 (88%)	35 (97%)
On mechanical ventilation, n (%)		13 (76%)	32 (89%)
Survived hospitalization, n (%)		14 (82%)	36 (100%)
Time between blood draw and symptom onset, days (IQR)		12 (7-17)**	70 (56-79)

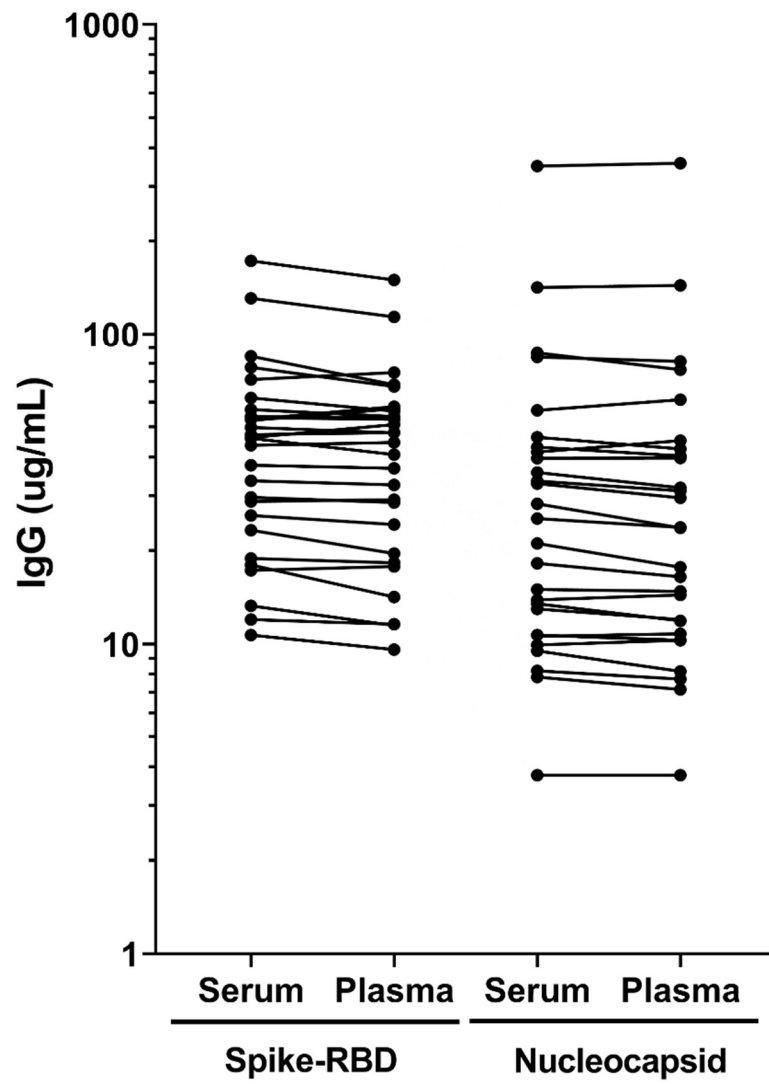
\*8 subjects were included in the longitudinal cohort and the follow-up clinic cohort.

\*\*Days between first recorded symptom and first blood draw

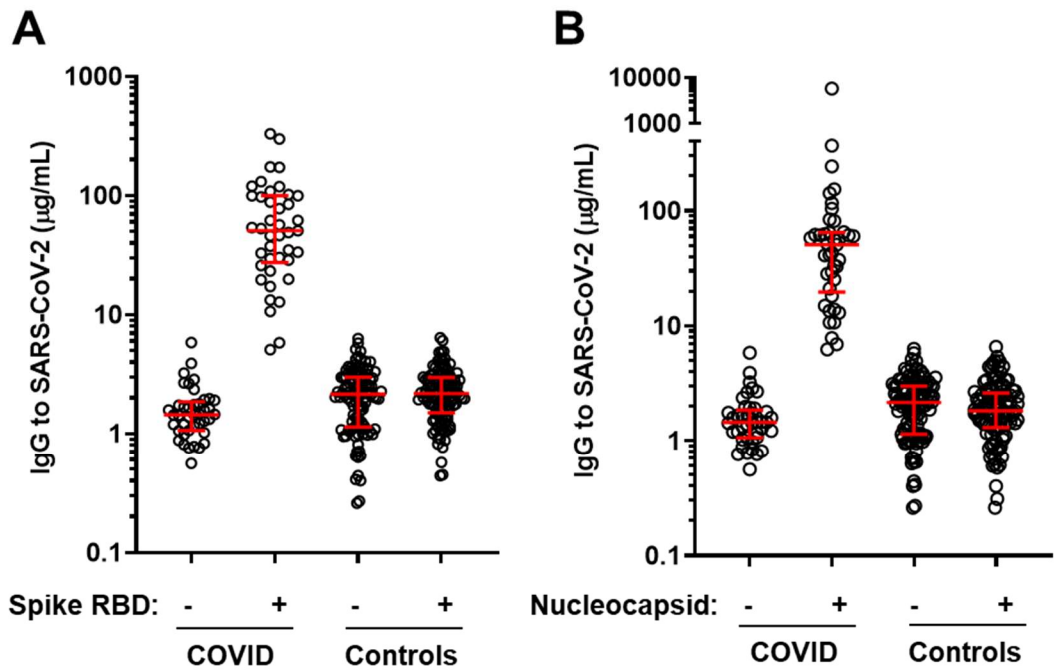
ONLINE SUPPLEMENT



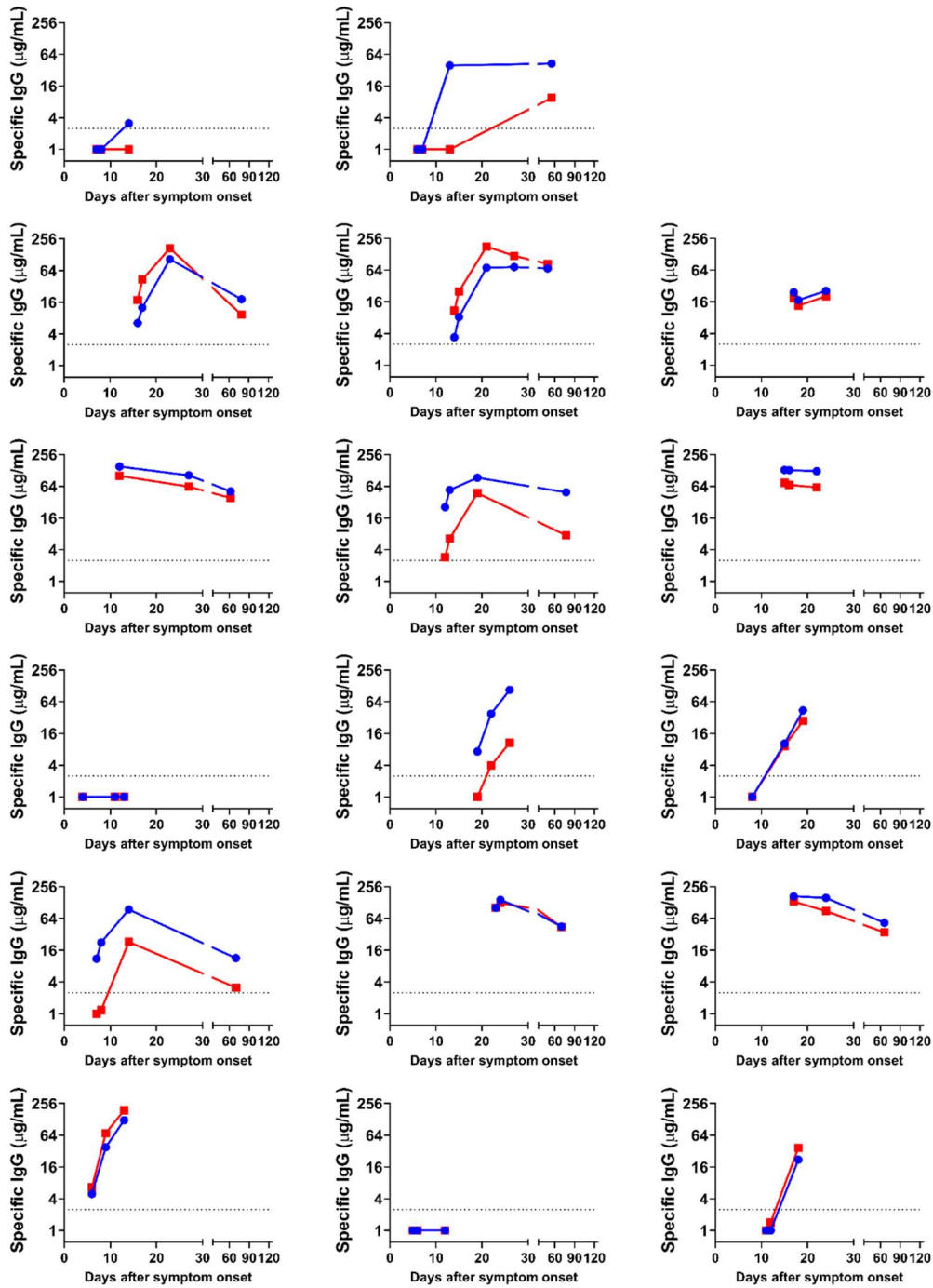
**Suppl. Fig. 1.** Measurement of IgG to SARS-CoV-2 spike-RBD and nucleocapsid using different amounts of viral antigen on the solid phase of the assay (N=3 patient samples).



**Suppl. Fig. 2.** Comparison of IgG to SARS-CoV-2 spike-RBD and nucleocapsid using paired plasma and serum samples from COVID-19 patients (n=15).



**Suppl. Fig. 3.** IgG to naked streptavidin ImmunoCAPs (-) or ImmunoCAPs carrying SARS-CoV-2 proteins (**A**, spike-RBD and **B**, nucleocapsid) on the solid-phase of samples from COVID-19 patients (n=41) or controls (n=109).



**Suppl. Fig. 4.** IgG to SARs-CoV-2 spike-RBD and nucleocapsid among 17 patients with severe COVID-19 who had longitudinal samples available.