

Supplementary Methods

Principal Components Analysis for Genome-wide Association Study

We performed principal component analysis (PCA) on all LARGE-PD subjects using the PC-AiR³² and PC-Relate³³ methods that are implemented in the GENESIS package and is available from Bioconductor.³⁴ We first estimated a kinship matrix using KING-robust³⁸, which is robust to unknown population structure. Using measures of ancestry divergence calculated from the KING-robust outputs, PC-AiR partitions the samples into a mutually unrelated and ancestry-representative set of subjects, as well as a related set. PC-AiR performs standard principal component (PC) analysis on the set of unrelated individuals and then projects the components of variation for the related set. We then estimated a kinship matrix using PC-Relate with adjustment of the ancestry-representative principal components derived by PC-AiR to appropriately estimate kinship among sampled individuals in the presence of population structure. We then performed a second round of analyses of PC-AiR and PC-Relate using the kinship matrix obtained in the previous step in order to generate the final principal components.

Determination of 95% Credible Set

We determined the 95% credible set using PAINTOR 3.0⁴³. PAINTOR provides the probability that a variant is causal given its membership in an annotation set. We selected annotations using neuronal and brain as keywords. We tested each annotation separately; we then tested the log Bayes factor of each model against the base model without annotations using a likelihood ratio test (LRT). This LRT follows a χ^2 distribution with a single degree of freedom. We retained annotations with a p-value less than 0.05 for the final model. After running the final model, variants were ordered by their posterior probabilities. We determined the credible set by selecting the variants where the summation of their ordered posterior probabilities is equal to or less than 95% of the total posterior probability.

23andMe Replication Quality Control

23andMe association results were extensively QCed following established 23andMe protocol.

Genotyped variants were flagged if they had a Hardy-Weinberg $P < 10^{-20}$, a call rate less than 90%, an

association with genotype data with $P < 10^{-50}$, age and sex effects ($r^2 > 0.1$), or failed a test for parent-offspring transmissions. Imputed variants were flagged if they had an imputed $r^2 < 0.3$ or had evidence of a platform batch effect as assessed by an ANOVA of the SNP dosages against the genotype platform ($P < 10^{-50}$). For all variants, variants were flagged if they were only available in 20% or less of the total dataset or the logistic regression model did not converge.

Principal Component and Genetic Relatedness Matrices for Admixture Mapping

We obtained principal components and the genetic relatedness matrix (GRM) using the PC-AiR³² and PC-Relate³³ methods. We included reference samples from the HapMap project phase III⁴⁶ and from the HGDP project (<http://www.hagsc.org/hgdp/files.html>) in the PC-AiR analysis for improved inference of population structure. We estimated the GRM using PC-Relate with adjustment of the ancestry representative principal components derived by PC-AiR. We then performed a second round of analyses of PC-AiR and PC-Relate using the relatedness matrix obtained in the previous step in order to get final the principal components and an ancestry adjusted GRM to be used in the admixture analyses to adjust for population stratification and account for relatedness.

Admixture Mapping Model Description

The full admixture mapping logistic mixed model can be described by:

$$\mathbf{logit}(\boldsymbol{\pi}) = \mathbf{X}\boldsymbol{\alpha} + \mathbf{A}_j\boldsymbol{\beta}_j + \mathbf{g},$$

where $\boldsymbol{\pi} = P(y = 1 | \mathbf{X}, \mathbf{A}_j, \mathbf{g})$ represents the $N \times 1$ column vector of probabilities of being affected for the N individuals conditional to the covariates, local ancestry calls and random effects, \mathbf{X} is the matrix of covariates and $\boldsymbol{\alpha}$ is the vector of fixed covariate effects including an intercept. We assume that $\mathbf{g} \sim N(0, \sigma_a^2 \boldsymbol{\Phi})$ is a vector of random effects for the N subjects, where σ_a^2 is the additive genetic variance and $\boldsymbol{\Phi}$ is the genetic relatedness matrix. Letting the third ancestral population be the reference population, \mathbf{A}_j represents a $N \times (K - 1)$ matrix of the local ancestry dosages at the locus j for the $K - 1$ parental

populations, with the corresponding effect size vector β_j of length $K - 1$. The null hypothesis that $\beta_j = \mathbf{0}$ was assessed via multivariate score test.

Determination of Admixture Mapping Significance Level

Based on previous studies, a nominal p-value of 5×10^{-5} controls the type I error at level of 0.05.⁵² Recent admixture, such as observed in Latinos, creates long-range linkage disequilibrium and thus the significance threshold does not need to be as stringent as that used for the association mapping. We also estimated the significance level empirically by fitting an autoregressive model to the admixture mapping p-values, summing the results across each chromosome.^{70,71} From the empirical autoregression model, we obtained a significance level of 7.7×10^{-5} . We elected to utilize the more conservative p-value threshold of 5×10^{-5} .

			ADJ	ADJ_REGION		ADJUSTED	ADJ_REGION
rs356183	1.120E-08	0.044	1.000	1.000	0.396	1.000	1.000
rs356182	4.900E-08	NA	1.000	1.000	NA	NA	NA
rs356181	4.940E-08	0.105	1.000	1.000	0.649	1.000	1.000
rs356211	5.230E-08	0.068	1.000	1.000	0.921	1.000	1.000
rs356219	4.420E-08	0.132	1.000	1.000	0.901	1.000	1.000
rs356220	3.000E-08	0.097	1.000	1.000	0.978	1.000	1.000
rs356221	7.660E-09	0.019	0.524	1.000	0.544	1.000	1.000
rs356223	5.860E-09	0.015	0.431	1.000	0.493	1.000	1.000
rs356225	5.390E-09	0.014	0.402	1.000	0.475	1.000	1.000
rs356165	1.520E-08	0.058	1.000	1.000	0.798	1.000	1.000
rs356204	6.990E-09	0.017	0.480	1.000	0.519	1.000	1.000
rs356203	2.480E-08	0.083	1.000	1.000	0.917	1.000	1.000
rs356200	6.990E-09	0.017	0.480	1.000	0.519	1.000	1.000
rs189596	5.820E-09	0.015	0.420	1.000	0.487	1.000	1.000
rs356168	5.820E-09	0.015	0.420	1.000	0.487	1.000	1.000
rs2736990	5.820E-09	0.015	0.420	1.000	0.487	1.000	1.000
rs356198	6.920E-08	0.002	0.062	0.496	0.026	0.728	1.000
rs356197	6.920E-08	0.002	0.062	0.496	0.026	0.728	1.000
rs356196	6.920E-08	0.002	0.062	0.496	0.026	0.728	1.000
rs356191	2.630E-08	1.20E-03	0.035	0.278	0.019	0.526	1.000
rs356162	3.250E-08	1.40E-03	0.039	0.314	0.021	0.591	1.000
rs184810	3.250E-08	1.40E-03	0.039	0.314	0.021	0.591	1.000
rs3775434	6.920E-09	5.00E-04	0.013	0.103	0.690	1.000	1.000
rs3822089	9.470E-09	6.00E-04	0.017	0.132	0.915	1.000	1.000
rs3822090	9.470E-09	6.00E-04	0.017	0.132	0.915	1.000	1.000
rs3775439	2.200E-08	1.10E-03	0.030	0.241	0.448	1.000	1.000
rs2737029	1.920E-08	0.032	0.900	1.000	0.984	1.000	1.000
rs6830166	6.530E-09	4.00E-04	0.012	0.096	NA	NA	NA

SNP, the rs ID of the variant. PVAL, the p-value prior to conditioning. P_rs356182, P_rs356182 ADJ, and P_rs356182 ADJ_REGION: p-values when conditioning on rs356182. P_rs6830166, P_rs6830166 ADJUSTED, and P_rs6830166 ADJ_REGION: p-values when conditioning on rs356182 and rs6830166. ADJ p-values correct for the number of GWAS-significant variants (28) and ADJ_REGION corrects for 220 tests (see methods).

Supplementary Table 4: 23andMe Replication of LARGE-PD results

SNP	CHROM	POS	ALLELES	GENE.CONTEXT	PVALUE	BETA	SE
rs271327	chr1	30115843	A/G	PTPRU---[]	0.932	0.006	0.066
rs9701252	chr1	211041590	C/T	[KCNH1]	0.895	-0.008	0.058
rs7517868	chr1	224251666	A/G	AC138393.1--[]--FBXO28	0.023	0.097	0.043
rs708736	chr1	226709895	A/G	PARP1---[]--STUM	0.157	0.069	0.049
rs2759345	chr1	231948939	C/T	[TSNAX-DISC1,DISC1]	0.059	-0.081	0.043
rs17700588	chr2	18717735	C/G	KCNS3---[]--RDH14	0.286	-0.067	0.063
rs13418209	chr2	164727379	G/T	FIGN---[]--GRB14	0.767	0.014	0.046
rs79278178	chr2	182609741	G/T	NEUROD1--[]--SSFA2	0.104	-0.258	0.165
rs734184	chr3	59554896	A/G	C3orf67---[]--FHIT	0.774	-0.012	0.042
rs1711557	chr3	99425669	A/G	[COL8A1]	0.327	0.049	0.050
rs62410627	chr3	196323379	A/G	FBXO45-[]--NRROS	0.894	0.012	0.088

rs75566098	chr3	196327220	C/T	FBXO45--[]--NRROS	0.855	-0.015	0.084
rs112491204	chr3	196327802	A/G	FBXO45--[]--NRROS	0.851	-0.016	0.084
rs4916439	chr3	196327848	A/G	FBXO45--[]--NRROS	0.850	-0.016	0.085
rs4916525	chr3	196327876	C/T	FBXO45--[]--NRROS	0.824	-0.019	0.085
rs77286998	chr3	196328485	A/C	FBXO45--[]--NRROS	0.874	-0.013	0.084
rs144236972	chr3	196328938	C/T	FBXO45--[]--NRROS	0.861	-0.015	0.084
rs113962850	chr3	196329372	A/G	FBXO45--[]--NRROS	0.808	-0.020	0.084
rs111874183	chr3	196330508	C/T	FBXO45--[]--NRROS	0.842	-0.017	0.084
rs74394036	chr3	196331602	C/T	FBXO45--[]--NRROS	0.854	0.015	0.084
rs113315229	chr3	196331728	C/T	FBXO45--[]--NRROS	0.845	-0.016	0.084
rs74507992	chr3	196332063	A/G	FBXO45--[]--NRROS	0.853	-0.016	0.084
rs77270731	chr3	196334530	A/G	FBXO45--[]--NRROS	0.840	-0.017	0.084
rs78820950	chr3	196357126	A/T	FBXO45--[]--NRROS	0.656	-0.051	0.116
rs78345302	chr3	196359181	C/G	FBXO45--[]--NRROS	0.875	-0.017	0.106
rs112565872	chr3	196359973	C/T	FBXO45--[]--NRROS	0.288	-0.096	0.091
rs112243434	chr3	196361847	C/T	FBXO45--[]--NRROS	0.251	-0.102	0.090
rs113727629	chr3	196361884	G/T	FBXO45--[]--NRROS	0.251	-0.102	0.090
rs78832270	chr3	196372937	A/G	[NRROS]	0.498	0.099	0.148
rs60523751	chr4	3726293	A/G	LRPAP1---[]--ADRA2C	0.905	0.019	0.156
rs73258550	chr4	22075244	A/T	KCNIP4---[]--ADGRA3	0.166	0.130	0.096
rs147853385	chr4	90516997	G/T	GPRIN3---[]--SNCA	0.127	-0.161	0.108
rs78448001	chr4	90520012	A/G	GPRIN3---[]--SNCA	0.126	-0.144	0.096
rs10012402	chr4	90546806	C/T	GPRIN3---[]--SNCA	0.225	0.094	0.078
rs1430961	chr4	90552920	A/G	GPRIN3---[]--SNCA	0.008	0.162	0.060
rs12498987	chr4	90554975	A/T	GPRIN3---[]--SNCA	0.166	0.091	0.066
rs28419161	chr4	90566935	C/T	GPRIN3---[]--SNCA	0.086	-0.141	0.083
rs7674594	chr4	90579508	A/G	GPRIN3---[]--SNCA	0.090	0.098	0.058
rs356182	chr4	90626111	A/G	GPRIN3---[]--SNCA	4.55E-08	0.234	0.043
rs356211	chr4	90636418	C/T	GPRIN3---[]--SNCA	1.04E-06	-0.205	0.042
rs356219	chr4	90637601	A/G	GPRIN3---[]--SNCA	2.35E-07	0.216	0.042
rs11931074	chr4	90639515	G/T	GPRIN3---[]--SNCA	3.50E-06	0.240	0.051
rs356220	chr4	90641340	C/T	GPRIN3---[]--SNCA	1.07E-07	0.222	0.042
rs356221	chr4	90642464	A/T	GPRIN3---[]--SNCA	5.48E-07	-0.209	0.042
rs356223	chr4	90643507	A/G	GPRIN3---[]--SNCA	6.82E-07	-0.207	0.042
rs356225	chr4	90643757	C/G	GPRIN3---[]--SNCA	4.48E-07	-0.211	0.042
rs8180209	chr4	90644454	A/G	GPRIN3---[]SNCA	3.38E-06	0.240	0.051
rs1045722	chr4	90645671	A/T	[SNCA]	2.50E-06	-0.245	0.051
rs3857053	chr4	90645674	C/T	[SNCA]	3.37E-06	0.241	0.051
rs356165	chr4	90646886	A/G	[SNCA]	8.94E-08	0.224	0.042
rs356204	chr4	90663542	C/T	[SNCA]	4.26E-07	0.211	0.042
rs356203	chr4	90666041	C/T	[SNCA]	8.14E-08	-0.224	0.042
rs356200	chr4	90668614	C/T	[SNCA]	4.00E-07	0.211	0.042
rs189596	chr4	90671336	A/G	[SNCA]	5.34E-07	0.209	0.042
rs356168	chr4	90674431	A/G	[SNCA]	5.61E-07	0.209	0.042
rs3857059	chr4	90675238	A/G	[SNCA]	3.04E-06	0.242	0.051
rs567871246	chr4	90678255	A/G	[SNCA]	4.74E-02	0.254	0.132
rs2736990	chr4	90678541	A/G	[SNCA]	5.13E-07	0.209	0.042
rs356198	chr4	90682504	C/T	[SNCA]	1.50E-03	-0.167	0.053
rs356197	chr4	90682750	A/G	[SNCA]	1.49E-03	0.167	0.053
rs10516845	chr4	90684278	A/G	[SNCA]	5.26E-08	0.299	0.054
rs356191	chr4	90688120	A/G	[SNCA]	8.68E-04	0.169	0.051

rs356188	chr4	90691537	C/T	[SNCA]	9.77E-04	0.167	0.052
rs356162	chr4	90697157	C/T	[SNCA]	8.99E-04	0.168	0.051
rs184810	chr4	90697979	C/T	[SNCA]	9.10E-04	0.168	0.051
rs3775434	chr4	90702781	A/G	[SNCA]	9.25E-06	0.218	0.048
rs3822089	chr4	90704011	A/G	[SNCA]	1.14E-05	-0.216	0.048
rs3822090	chr4	90704876	C/T	[SNCA]	1.06E-05	0.216	0.048
rs3775439	chr4	90709741	A/G	[SNCA]	1.19E-05	-0.215	0.048
rs2737030	chr4	90710099	C/T	[SNCA]	9.93E-04	0.166	0.051
rs2737029	chr4	90711770	C/T	[SNCA]	4.21E-07	-0.212	0.042
rs10014396	chr4	90712629	C/T	[SNCA]	7.46E-05	-0.220	0.054
rs2583962	chr4	90713747	C/T	[SNCA]	1.00E-03	-0.166	0.051
rs3889917	chr4	90716852	C/T	[SNCA]	1.69E-02	-0.149	0.061
rs2737028	chr4	90717016	A/G	[SNCA]	9.81E-04	0.166	0.051
rs2572318	chr4	90718719	C/T	[SNCA]	9.83E-04	0.166	0.051
rs2737025	chr4	90719192	A/G	[SNCA]	9.93E-04	0.166	0.051
rs2583964	chr4	90727218	A/G	[SNCA]	7.23E-04	0.170	0.051
rs2197120	chr4	90729602	A/G	[SNCA]	1.27E-03	0.162	0.051
rs2619368	chr4	90729747	G/T	[SNCA]	1.08E-03	-0.164	0.051
rs748849	chr4	90734961	A/G	[SNCA]	1.11E-03	-0.163	0.051
rs1442144	chr4	90736113	C/T	[SNCA]	1.10E-03	-0.163	0.051
rs2619341	chr4	90741773	A/G	[SNCA]	1.09E-03	0.164	0.051
rs10005233	chr4	90743331	C/T	[SNCA]	1.13E-01	0.067	0.042
rs10008964	chr4	90744721	A/G	[SNCA]	1.15E-03	-0.163	0.051
rs6830166	chr4	90744993	C/T	[SNCA]	4.88E-05	0.199	0.048
rs2619347	chr4	90745770	A/G	[SNCA]	8.31E-04	-0.168	0.051
rs2619349	chr4	90746646	G/T	[SNCA]	7.65E-04	0.169	0.051
rs1811442	chr4	90747751	C/T	[SNCA]	7.16E-04	0.170	0.051
rs2619355	chr4	90748374	A/C	[SNCA]	7.05E-04	0.170	0.051
rs2583979	chr4	90750588	A/T	[SNCA]	9.60E-04	0.167	0.051
rs2737002	chr4	90753180	A/G	[SNCA]	5.35E-04	0.176	0.052
rs1471484	chr4	90754313	C/T	[SNCA]	5.11E-04	0.177	0.052
rs990085	chr4	90754771	A/G	[SNCA]	5.32E-04	0.176	0.052
rs1372518	chr4	90757294	A/C	[SNCA]	6.39E-04	0.171	0.051
rs1372519	chr4	90757309	A/G	[SNCA]	7.41E-04	0.169	0.051
rs2301134	chr4	90758945	A/G	[SNCA]	8.50E-02	0.072	0.042
rs6822088	chr4	90764310	C/T	SNCA-[]--MMRN1	6.98E-05	-0.196	0.049
rs6532194	chr4	90780902	C/T	SNCA-[]--MMRN1	0.012	0.129	0.051
rs114568886	chr4	114427290	A/G	[CAMK2D]	0.238	-0.436	0.347
rs6847111	chr4	140693857	C/T	[MAML3]	0.980	-0.001	0.049
rs6820425	chr4	183226376	A/C	[TENM3]	0.753	0.018	0.058
rs77572607	chr5	76926748	A/G	[OTP]	0.067	0.161	0.090
rs2368554	chr5	97794710	A/G	[]--RGMB	0.048	0.098	0.050
rs106451	chr5	104048870	A/C	[]	0.131	-0.085	0.056
rs73781866	chr5	109280421	C/T	MAN2A1--[]--TMEM232	0.879	0.013	0.088
rs79212064	chr5	115342038	C/G	[LVRN]	0.183	0.095	0.071
rs59521270	chr5	115344826	C/G	[LVRN]	0.236	-0.084	0.070
rs7732824	chr5	115349682	A/G	[LVRN]	0.522	0.046	0.071
rs443402	chr5	148818868	A/G	IL17B--[]--CSNK1A1	0.550	0.045	0.075
rs7741438	chr6	5723118	A/G	[FARS2]	0.158	0.062	0.044
rs9784801	chr6	10572987	A/G	[GCNT2]	0.039	-0.380	0.195
rs1264344	chr6	30800577	C/T	IER3--[]--DDR1	0.914	0.005	0.042

rs3130787	chr6	30809864	A/G	IER3--[--DDR1	0.620	-0.021	0.042
rs2394450	chr6	30817501	A/G	IER3---[--DDR1	0.506	0.028	0.042
rs3130794	chr6	30832810	C/T	IER3---[--DDR1	0.942	0.003	0.042
rs3132576	chr6	30833116	A/G	IER3---[--DDR1	0.928	0.004	0.042
rs3095354	chr6	30836111	C/T	IER3---[--DDR1	0.942	0.003	0.042
rs3132573	chr6	30840688	A/G	IER3---[--DDR1	0.901	-0.005	0.042
rs3130796	chr6	30840950	C/T	IER3---[--DDR1	0.938	-0.003	0.042
rs78809511	chr6	32190969	C/T	[NOTCH4]	0.149	-0.247	0.177
rs2296340	chr6	33630472	A/G	[ITPR3]	0.236	0.085	0.072
rs11751469	chr6	33804547	C/T	MLN--[--GRM4	0.142	-0.064	0.044
rs6901216	chr6	33807091	C/T	MLN--[--GRM4	0.123	0.067	0.044
rs6914721	chr6	34438564	A/G	[PACIN1]	0.286	-0.053	0.050
rs3862822	chr6	113979801	A/G	[---MARCKS	0.165	-0.106	0.077
rs2882346	chr6	115275562	A/G	HS3ST5---[--FRK	0.683	-0.018	0.044
rs58382092	chr6	117730414	D/I	[ROS1,RP1-179P9.3]	0.294	-0.044	0.042
rs9403515	chr6	143908013	A/G	FUCA2--[--PHACTR2	0.851	0.008	0.045
rs11155309	chr6	143918183	C/T	FUCA2--[--PHACTR2	0.881	0.006	0.044
rs7741506	chr6	143951867	A/C	FUCA2--[--PHACTR2	0.345	-0.042	0.044
rs56352728	chr7	10413783	A/G	[---NDUFA4	0.300	0.125	0.123
rs116572254	chr7	41700811	A/G	SUGCT---[--INHBA	0.801	-0.076	0.303
rs4510764	chr7	93136812	A/C	[CALCR]	0.193	-0.058	0.045
rs143177239	chr7	118862299	G/T	ANKRD7---[]	0.433	-0.196	0.257
rs7357254	chr7	135466740	C/T	FAM180A--[--MTPN	0.988	0.001	0.051
rs77540070	chr7	147280255	A/G	[CNTNAP2]	0.613	-0.043	0.085
rs72710842	chr9	30373761	C/T	[]	0.493	-0.082	0.122
rs7920886	chr10	24060582	C/T	OTUD1---[--KIAA1217	0.507	-0.126	0.186
rs1255396	chr10	43039187	C/T	[---ZNF33B	0.311	-0.045	0.044
rs4430448	chr10	87636974	A/G	[GRID1]	0.166	-0.187	0.132
rs117304246	chr10	105553341	A/G	[SH3PXD2A]	0.342	-0.119	0.127
rs79570991	chr10	120248430	A/G	FAM204A---[--PRLHR	0.894	-0.028	0.208
rs10751550	chr10	128109449	C/T	ADAM12--[--C10orf90	0.334	-0.064	0.066
rs12414718	chr10	134147172	A/G	[LRRC27]	0.098	0.143	0.088
rs11038673	chr11	45846619	G/T	SLC35C1--[--CRY2	0.267	-0.048	0.043
rs112703641	chr11	70424012	A/G	[SHANK2]	0.024	0.288	0.123
rs117954227	chr11	87028818	C/G	[TMEM135]	0.393	0.108	0.128
rs9315984	chr13	43639187	C/T	[DNAJC15]	0.359	0.064	0.070
rs61956689	chr13	66545953	A/G	[---PCDH9	0.854	-0.015	0.083
rs4885004	chr13	73093913	A/G	DACH1---[--MZT1	0.194	-0.076	0.059
rs9585041	chr13	100018237	C/T	[UBAC2]	0.947	0.003	0.046
rs7983036	chr13	100043087	A/G	UBAC2---[--TM9SF2	0.930	0.004	0.046
rs7142675	chr14	25012115	C/T	CMA1--[--CTSG	0.419	0.035	0.044
rs1957523	chr14	25044712	C/T	[CTSG]	0.476	0.032	0.044
rs10498408	chr14	49058396	C/T	MDGA2---[--RPS29	0.232	-0.094	0.079
rs60148623	chr14	74177514	A/T	DNAL1-[PNMA1	0.796	-0.028	0.109
rs34891196	chr14	74294148	C/G	ELMSAN1--[--PTGR2	0.839	0.009	0.042
rs35483531	chr14	100653772	C/T	DEGS2---[--YY1	0.904	0.006	0.049
rs16964068	chr15	37078689	C/G	[C15orf41]	0.555	0.026	0.044
rs148346037	chr15	65792495	C/G	[DPP8]	0.314	-0.309	0.296
rs73541708	chr15	92891626	A/G	SLCO3A1---[--ST8SIA2	0.466	0.044	0.060
rs1724409	chr17	43740565	G/T	[CRHR1]	0.001	0.166	0.051
rs1805081	chr18	21140432	C/T	[NPC1]	0.272	-0.049	0.044

rs11660252	chr18	49727447	A/G	[]---DCC	0.161	0.120	0.087
rs4890995	chr18	73493754	A/C	SMIM21---[]---ZNF516	0.646	0.054	0.118
rs6510816	chr19	4531364	C/T	[PLIN5,CTB-50L17.14]	0.325	-0.047	0.048
rs80037173	chr19	39164081	A/T	[ACTN4]	0.850	0.016	0.087
rs6105604	chr20	16430248	A/C	[KIF16B]	0.945	-0.015	0.220
rs2258671	chr20	25275230	A/G	[PYGB]	0.490	-0.245	0.342
rs9983667	chr21	22186687	A/C	[]---NCAM2	0.620	-0.039	0.078
rs5748663	chr22	17299261	C/T	[XKR3]	0.594	0.054	0.100

Results from the 23andMe replication of LARGE-PD results (see methods). SNP, the rs ID of the tested variant. CHROM, the chromosomal location. POS, the hg19 coordinates. ALLELES, the alleles of the variant. GENE.CONTEXT, the nearest genes. PVALUE, the p-value. BETA, the beta coefficient of the variant. SE, the standard error of the beta coefficients.

Supplementary Table 5: Replication of Nalls et al. 2019:

SNP	NEAREST GENE	AF_NALLS	AF_LARGE PD	BETA_NALLS	BETA_LARGE PD	BETA CONCORD	CG/AT	P	P_ADJ
rs114138760	PMVK	0.011	0.003	0.281	-0.112	FALSE	TRUE	0.875	1
rs35749011	KRTCAP2	0.017	0.005	0.607	1.139	TRUE	FALSE	0.058	1
rs76763715	GBAP1	0.995	0.998	-0.747	-1.329	TRUE	FALSE	0.128	1
rs6658353	FCGR2A	0.501	0.397	0.065	-0.005	FALSE	TRUE	0.952	1
rs11578699	VAMP4	0.195	0.137	-0.07	0.075	FALSE	FALSE	0.531	1
rs823118	NUCKS1	0.566	0.379	0.107	0.099	TRUE	FALSE	0.245	1
rs11557080	RAB29	0.139	0.152	0.132	0.095	TRUE	FALSE	0.395	1
rs4653767	ITPKB	0.720	0.725	0.083	0.040	TRUE	FALSE	0.660	1
rs10797576	SIPA1L2	0.140	0.201	0.111	0.167	TRUE	FALSE	0.098	1
rs76116224	KCNS3	0.904	0.927	0.11	0.359	TRUE	TRUE	0.027	1
rs2042477	KCNIP3	0.242	0.381	-0.066	-0.196	TRUE	TRUE	0.029	1
rs11683001	MAP4K4	0.337	0.260	0.071	0.167	TRUE	TRUE	0.081	1
rs57891859	TMEM163	0.719	0.530	0.081	0.025	TRUE	FALSE	0.770	1
rs1474055	STK39	0.131	0.256	0.18	0.145	TRUE	FALSE	0.127	1
rs73038319	SATB1	0.959	0.991	-0.169	-0.665	TRUE	FALSE	0.126	1
rs6808178	LINC00693	0.379	0.186	0.066	0.228	TRUE	FALSE	0.039	1
rs12497850	IP6K2	0.648	0.782	0.064	0.113	TRUE	FALSE	0.281	1
rs55961674	KPNA1	0.172	0.119	0.086	0.272	TRUE	FALSE	0.041	1
rs11707416	MED12L	0.367	0.299	-0.063	-0.143	TRUE	TRUE	0.112	1
rs1450522	SPTSSB	0.674	0.626	-0.062	-0.125	TRUE	FALSE	0.138	1
rs10513789	MCCC1	0.811	0.728	0.149	0.111	TRUE	FALSE	0.230	1
rs873786	GAK	0.099	0.052	-0.173	-0.146	TRUE	FALSE	0.428	1
rs34311866	TMEM175	0.807	0.899	-0.213	-0.045	TRUE	FALSE	0.748	1
rs4698412	BST1	0.553	0.626	0.104	0.119	TRUE	FALSE	0.166	1
rs34025766	LCORL	0.159	0.163	-0.084	-0.181	TRUE	TRUE	0.113	1
rs6825004	SCARB2	0.691	0.523	0.062	-0.074	FALSE	TRUE	0.376	1
rs4101061	FAM47E	0.711	0.485	-0.091	-0.140	TRUE	FALSE	0.121	1
rs6854006	FAM47E-STBD1	0.363	0.218	-0.091	0.134	FALSE	FALSE	0.193	1
rs356182	SNCA	0.628	0.562	-0.277	-0.460	TRUE	FALSE	2.48E-08	2.09E-06
rs13117519	CAMK2D	0.174	0.110	0.088	0.046	TRUE	FALSE	0.722	1

rs62333164	CLCN3	0.326	0.173	-0.064	-0.078	TRUE	FALSE	0.502	1
rs1867598	ELOVL7	0.902	0.892	-0.155	-0.293	TRUE	FALSE	0.026	1
rs26431	PAM	0.703	0.799	0.062	-0.132	FALSE	TRUE	0.205	1
rs11950533	C5orf24	0.102	0.177	-0.092	0.043	FALSE	FALSE	0.688	1
rs9261484	TRIM40	0.245	0.404	-0.064	-0.148	TRUE	FALSE	0.096	1
rs12528068	RIMS1	0.284	0.166	0.066	-0.089	FALSE	FALSE	0.433	1
rs997368	FYN	0.805	0.797	0.071	0.088	TRUE	FALSE	0.409	1
rs75859381	RPS12	0.967	0.894	-0.221	-0.233	TRUE	FALSE	0.085	1
rs199351	GPNMB	0.594	0.667	0.102	0.051	TRUE	FALSE	0.570	1
rs1293298	CTSB	0.744	0.863	0.093	-0.052	FALSE	FALSE	0.680	1
rs620513	FGF20	0.268	0.290	-0.086	-0.102	TRUE	FALSE	0.296	1
rs2280104	BIN3	0.360	0.242	0.056	0.214	TRUE	FALSE	0.025	1
rs2086641	FAM49B	0.723	0.677	-0.061	-0.012	TRUE	FALSE	0.888	1
rs13294100	SH3GL2	0.342	0.542	-0.086	-0.016	TRUE	FALSE	0.854	1
rs10756907	SH3GL2	0.767	0.754	-0.093	-0.126	TRUE	FALSE	0.185	1
rs6476434	UBAP2	0.734	0.789	-0.062	0.062	FALSE	FALSE	0.534	1
rs896435	ITGA8	0.689	0.679	0.074	0.193	TRUE	FALSE	0.028	1
rs10748818	GBF1	0.851	0.805	-0.079	0.128	FALSE	FALSE	0.215	1
rs72840788	BAG3	0.216	0.124	0.076	0.094	TRUE	FALSE	0.444	1
rs117896735	INPP5F	0.017	0.007	0.435	1.167	TRUE	FALSE	0.010	0.852
rs7938782	RNF141	0.878	0.894	0.087	0.246	TRUE	FALSE	0.071	1
rs12283611	DLG2	0.415	0.321	-0.065	-0.096	TRUE	FALSE	0.289	1
rs3802920	IGSF9B	0.205	0.152	0.107	-0.056	FALSE	FALSE	0.630	1
rs76904798	LRRK2	0.144	0.199	0.144	0.024	TRUE	FALSE	0.811	1
rs34637584	LRRK2	0.002	0.002	2.429	0.678	TRUE	FALSE	0.412	1
rs7134559	SCAF11	0.404	0.276	-0.054	-0.154	TRUE	FALSE	0.092	1
rs11610045	FBRSL1	0.490	0.238	0.06	0.056	TRUE	FALSE	0.581	1
rs9568188	CAB39L	0.740	0.677	0.062	0.127	TRUE	FALSE	0.147	1
rs4771268	MBNL2	0.230	0.147	0.068	-0.164	FALSE	FALSE	0.160	1
rs12147950	MIPOL1	0.438	0.444	-0.053	-0.144	TRUE	FALSE	0.074	1
rs11158026	GCH1	0.325	0.425	-0.084	-0.002	TRUE	FALSE	0.984	1
rs3742785	RPS6KL1	0.787	0.674	0.071	0.137	TRUE	FALSE	0.130	1
rs979812	GALC	0.442	0.516	0.061	0.153	TRUE	FALSE	0.065	1
rs2251086	VPS13C	0.142	0.139	-0.119	-0.236	TRUE	FALSE	0.045	1
rs2904880	CD19	0.309	0.533	-0.065	-0.104	TRUE	TRUE	0.251	1
rs11150601	SETD1A	0.644	0.561	0.091	0.279	TRUE	FALSE	9.81E-04	0.082
rs6500328	NOD2	0.599	0.659	0.059	0.040	TRUE	FALSE	0.648	1
rs3104783	CASC16	0.434	0.666	0.067	0.060	TRUE	FALSE	0.502	1
rs10221156	CHD9	0.093	0.076	-0.116	-0.246	TRUE	FALSE	0.109	1
rs12600861	CHRNB1	0.648	0.679	-0.057	-0.033	TRUE	FALSE	0.705	1
rs12951632	RETREG3	0.735	0.797	0.064	0.091	TRUE	FALSE	0.360	1
rs2269906	UBTF	0.653	0.486	0.063	0.128	TRUE	FALSE	0.120	1
rs850738	FAM171A2	0.606	7.00E-01	-0.071	-0.101	TRUE	FALSE	0.259	1
rs62053943	CRHR1	0.155	0.081	-0.27	-0.158	TRUE	FALSE	0.304	1
rs117615688	CRHR1	0.067	4.500E-02	-0.232	-0.741	TRUE	FALSE	2.29E-04	0.019
rs11658976	WNT3	0.580	0.484	-0.062	-0.103	TRUE	FALSE	0.225	1
rs61169879	BRIP1	0.164	0.192	0.082	0.118	TRUE	FALSE	0.262	1
rs666463	DNAH17	0.833	0.913	0.076	-0.171	FALSE	TRUE	0.247	1
rs1941685	ASXL3	0.498	0.707	0.053	0.016	TRUE	FALSE	0.861	1
rs12456492	RIT2	0.682	0.652	-0.098	0.001	FALSE	FALSE	0.993	1

rs8087969	MEX3C	0.550	0.654	-0.058	0.033	FALSE	FALSE	0.696	1
rs55818311	SPPL2B	0.694	0.529	-0.07	-0.037	TRUE	FALSE	0.672	1
rs77351827	CRLS1	0.128	0.066	0.08	0.152	TRUE	FALSE	0.367	1
rs2248244	DYRK1A	0.283	0.254	0.071	0.147	TRUE	FALSE	0.117	1

Replication of the independent loci described in Nalls et al. 2019 using the LARGE-PD GWAS results. SNP, the rs ID. NEAREST GENE, the nearest gene to the variant. AF_NALLS, the allele frequency given by Nalls et al., AF_LARGE PD, the allele frequency in LARGE-PD, BETA_NALLS, the beta coefficients from Nalls et al., BETA_LARGE PD, the beta coefficients from LARGE-PD, BETA CONCORD, indicates consistent direction of effect, CG/AT, indicates whether the variant in strand ambiguous, P, the p-value the LARGE-PD GWAS, P_ADJ, the p-value corrected for 84 tests.

Supplementary Table 6: GWAS-significant variant look-up

STUDY	SNP	GENE(s)	OR_STUDY	OR_LARGE PD	P_LARGE	CONCORDANCE
Nalls et al. 2014	rs35749011	GBA/SYT11	1.824	NA	NA	NA
Nalls et al. 2014	rs823118	RAB7L1/NUCKS1	1.122	1.104	0.245	TRUE
Nalls et al. 2014	rs10797576	SIPA1L2	1.131	1.182	0.098	TRUE
Nalls et al. 2014	rs6430538	ACMSD/TMEM163	0.875	1.022	0.811	FALSE
Nalls et al. 2014	rs1474055	STK39	1.214	1.156	0.127	TRUE
Nalls et al. 2014	rs115185635	KRT8P25/APOOP2	1.142	1.284	0.355	TRUE
Nalls et al. 2014	rs12637471	MCCC1	0.842	0.913	0.323	TRUE
Nalls et al. 2014	rs34311866	TMEM175/GAK/DGKQ	0.786	0.956	0.748	TRUE
Nalls et al. 2014	rs11724635	BST1	1.126	1.129	0.155	TRUE
Nalls et al. 2014	rs6812193	FAM47E/SCARB2	0.907	1.145	0.188	FALSE
Nalls et al. 2014	rs356182	SNCA	0.760	0.631	2.48E-08	TRUE
Nalls et al. 2014	rs9275326	HLA-DQB1	0.826	0.748	0.006	TRUE
Nalls et al. 2014	rs199347	GPNMB	1.110	1.067	0.480	TRUE
Nalls et al. 2014	rs117896735	INPP5F	1.624	NA	NA	NA
Nalls et al. 2014	rs3793947	DLG2	0.929	0.972	0.744	TRUE
Nalls et al. 2014	rs329648	MIR4697	1.105	1.141	0.111	TRUE
Nalls et al. 2014	rs76904798	LRRK2	1.155	1.025	0.811	TRUE
Nalls et al. 2014	rs11060180	CCDC62	1.105	1.124	0.157	TRUE
Nalls et al. 2014	rs11158026	GCH1	0.904	0.998	0.984	TRUE
Nalls et al. 2014	rs1555399	TMEM229B	0.897	0.999	0.991	TRUE
Nalls et al. 2014	rs2414739	VPS13C	1.113	1.239	0.028	TRUE
Nalls et al. 2014	rs14235	BCKDK/STX1B	1.103	1.228	0.012	TRUE
Nalls et al. 2014	rs17649553	MAPT	0.769	0.662	0.001	TRUE
Nalls et al. 2014	rs12456492	RIT2	0.904	1.001	0.993	FALSE
Nalls et al. 2014	rs62120679	SPPL2B	1.097	1.035	0.682	TRUE
Nalls et al. 2014	rs8118008	DDRGK1	1.111	1.066	0.478	TRUE
Chang et al. 2017	rs4653767	ITPKB	0.920	0.960	0.660	TRUE
Chang et al. 2017	rs34043159	IL1R2	1.080	1.170	0.100	TRUE
Chang et al. 2017	rs353116	SCN3A	0.940	1.124	0.156	FALSE
Chang et al. 2017	rs4073221	SATB1	1.100	0.999	0.996	FALSE
Chang et al. 2017	rs12497850	NCKIPSD,CDC71	0.930	0.893	0.281	TRUE
Chang et al. 2017	rs143918452	ALAS1,TLR9,DNAH1,BAP1,PHF7, NISCH,STAB1,ITIH3,ITIH4	0.680	NA	NA	NA
Chang et al. 2017	rs78738012	ANK2,CAMK2D	1.130	1.262	0.213	TRUE
Chang et al. 2017	rs2694528	ELOVL7	1.150	1.341	0.025	TRUE

Chang et al. 2017	rs9468199	ZNF184	1.110	1.219	0.041	TRUE
Chang et al. 2017	rs2740594c	CTSB	1.090	1.001	0.992	TRUE
Chang et al. 2017	rs2280104	SORBS3,PDLIM2,C8orf58,BIN3	1.070	1.239	0.025	TRUE
Chang et al. 2017	rs13294100	SH3GL2	0.920	0.984	0.854	TRUE
Chang et al. 2017	rs10906923	FAM171A1	0.930	0.834	0.039	TRUE
Chang et al. 2017	rs8005172	GALC	1.080	1.162	0.070	TRUE
Chang et al. 2017	rs11343	COQ7	1.070	NA	NA	NA
Chang et al. 2017	rs4784227	TOX3	1.090	1.113	0.201	TRUE
Chang et al. 2017	rs601999	ATP6V0A1,PSMC3IP,TUBG2	0.930	1.000	1.000	TRUE
Foo et al. 2020	rs246814	SV3C	1.11/1.07	1.053	0.683	TRUE
Foo et al. 2020	rs9638616	WBSCR17	1.14/1.02	1.117	0.212	TRUE

Look-up of additional PD GWAS loci. STUDY, the original source of the data, SNP, the rs ID, GENE(s), the nearest genes. OR_STUDY, the reported odds ratio. OR_LARGE, the odds ratio in LARGE-PD. P_LARGE, the p-value from the LARGE-PD GWAS. CONCORDANCE indicates an agreement in effect size direction. Variants with an NA had a MAF less than 0.01 in LARGE-PD.

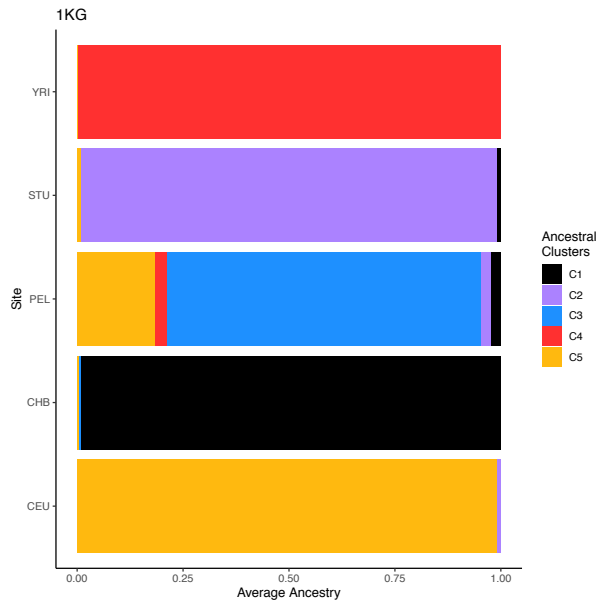
Supplementary Table 7: Admixture mapping fine-mapping results

CHR	PEAK	GENE	TOP SNP	POS	PVAL	P_ADJ	MAF
6	166465311-166607482	RPS6KA2	rs75880521	166524210	6.05E-04	0.352	AFR:0.22; EUR: 0.0; AMR: 0.014
14	24713480-25147976	STXBP6	rs79647551	24719286	4.49E-05	0.070	AFR:0.007; EUR:0.11; AMR:0.31
17	34404030-34456968	NA	rs4795926	34449696	1.74E-02	1.000	AFR:0.09; EUR:0.22; AMR:0.412
21	44767470-44915665	ITGB2	rs183517	44892765	1.66E-04	0.111	AFR:0.22; EUR: 0.0; AMR: 0.014

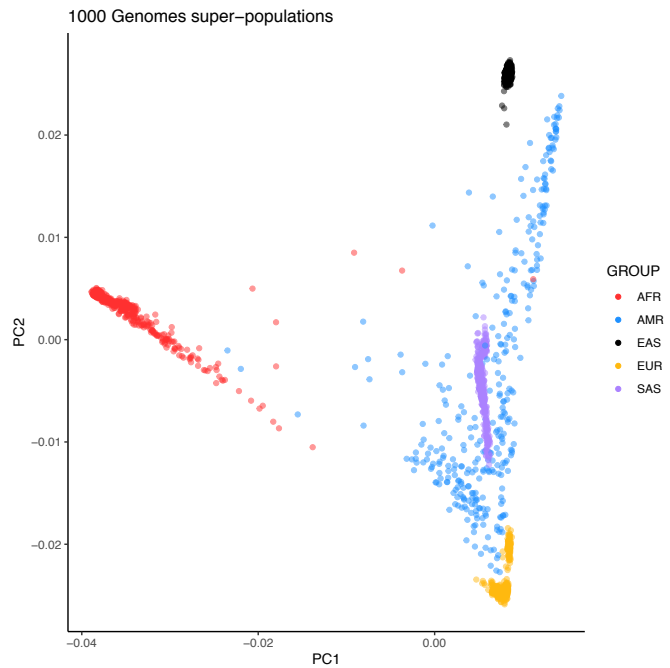
LARGE-PD GWAS results overlaid with the admixture mapping peaks. CHR, the chromosomal location of the peak. PEAK, the position in hg19 coordinates. GENE, the gene co-localized with the peak. TOP SNP, the variant with the lowest p-value within the AM peak. POS, the variant position in hg19 coordinates. PVAL, the p-value from the LARGE-PD GWAS for the top variant. P_ADJ, the p-value adjusted for the number of imputed variants in the peak. MAF, the super-population frequencies of the variant from the 1000 Genomes Project.

Supplementary Figure 1: Reference Samples for Ancestry analysis

A.

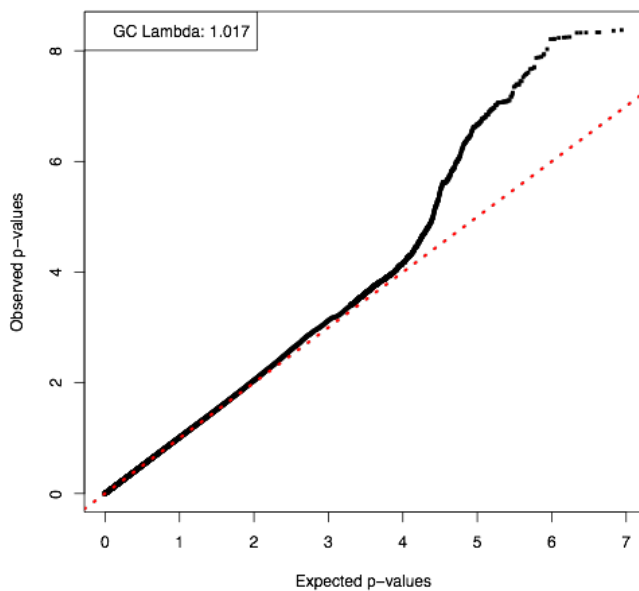


B.



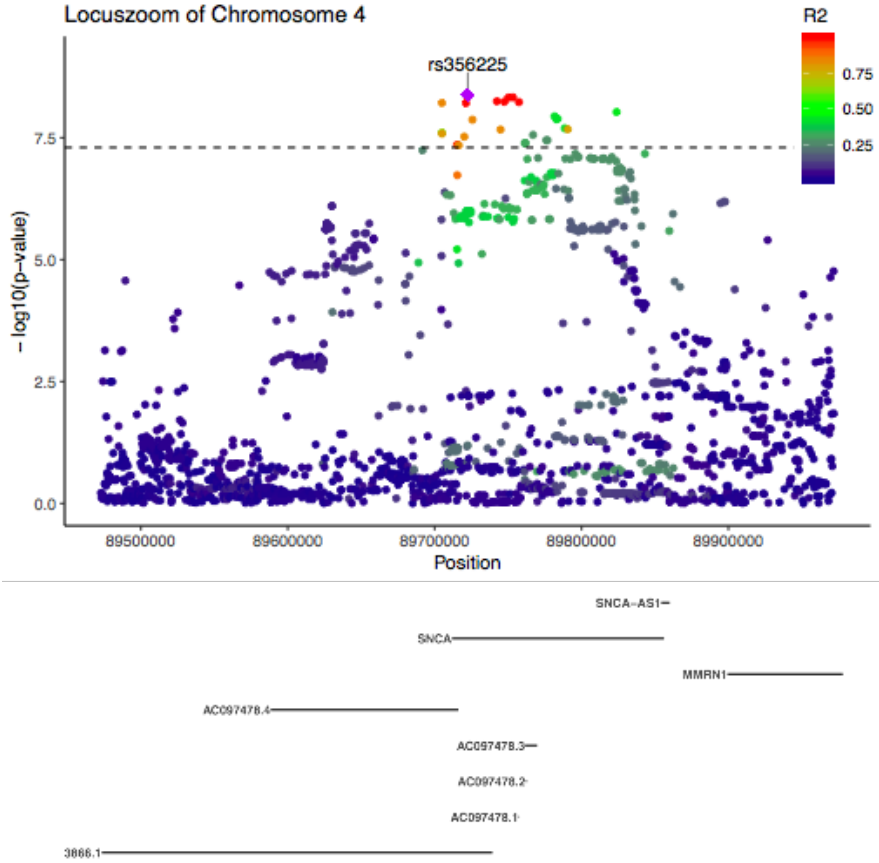
A: Mean ancestry proportions 1000 Genomes Project⁷⁴ populations used as references as determined by ADMIXTURE in an unsupervised manner. B: PCA plot of 1000 Genomes subjects used as references.

Supplementary Figure 2: QQ plot of GWAS P-values



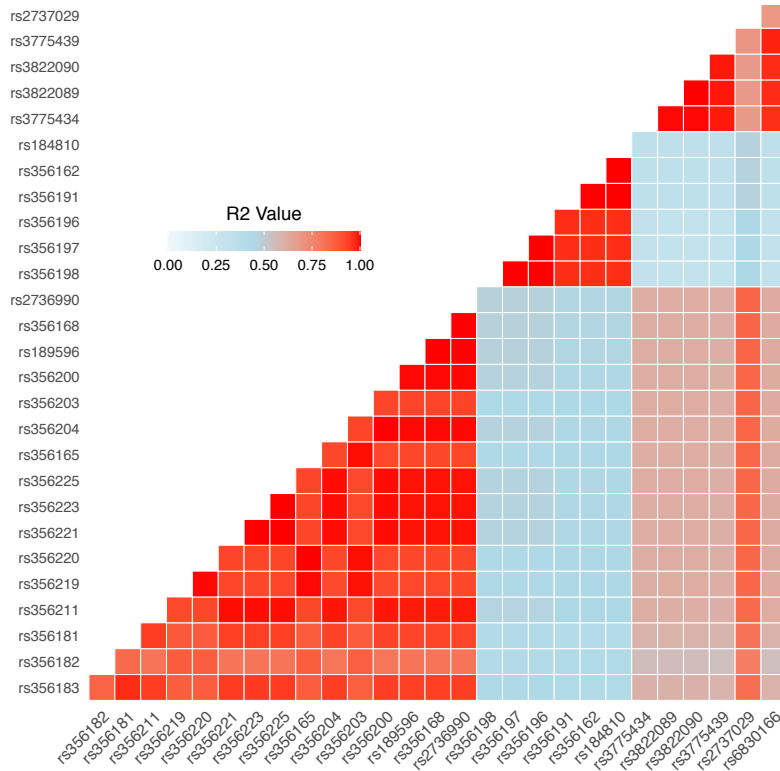
QQ plot of log-transformed p-values from the GWAS of imputed LARGE-PD data obtained via a logistic mixed model as implemented by the GENESIS package in R (see methods). Minimal inflation was observed; the genomic control lambda was 1.017.

Supplementary Figure 3: Locuszoom-style plots of SNCA locus



Locuszoom-style plots for the SNCA locus on chromosome 4. The plots generated via the Locuszoom tool are reliant on external LD data and might not be reflective of the true LD structure present in the GWAS dataset. Here, we use LD information estimated with PLINK to generate Locuszoom-style plots.

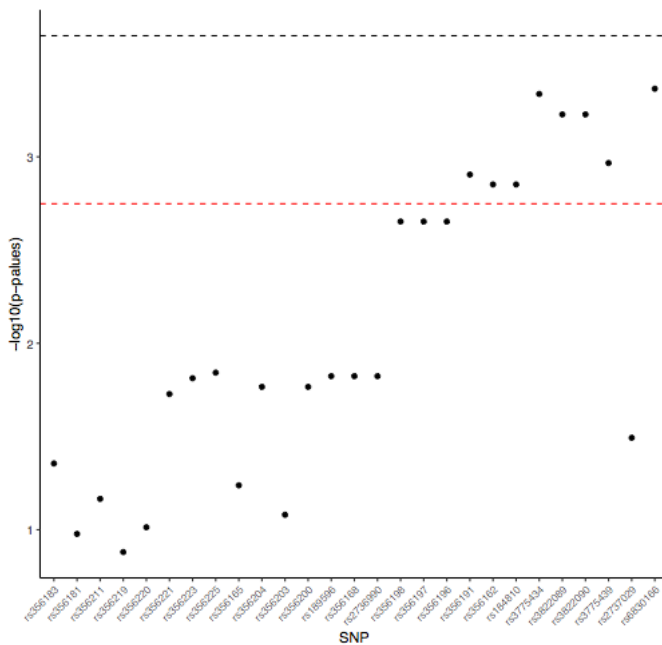
Supplementary Figure 4: LD structure of genome-wide significant SNCA variants



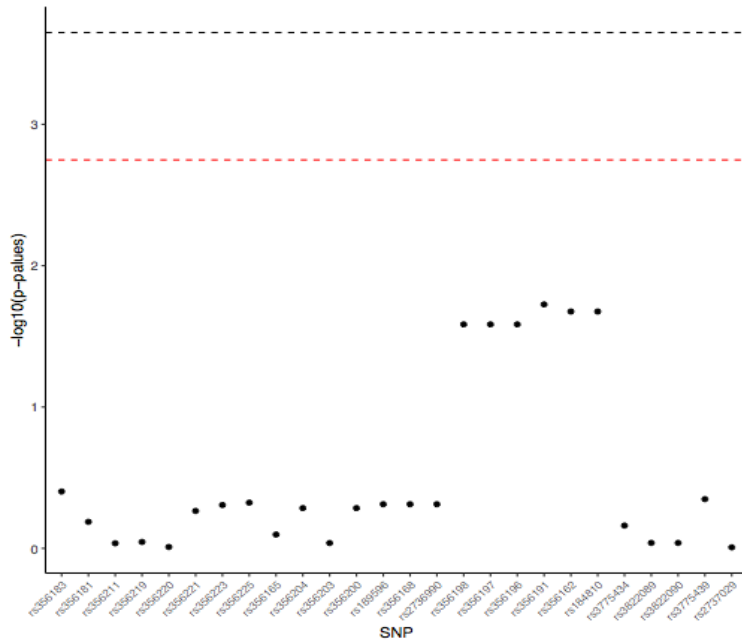
Linkage disequilibrium structure of genome-wide significant SNCA variants in the Peruvian subset of LARGE-PD. LD is estimated using PLINK and plotted in R. Note that 14 variants have a squared correlation with rs356182 greater than 0.8.

Supplementary Figure 5: Conditional analysis of GWAS-significant SNCA variants

A. Conditioning on rs356182

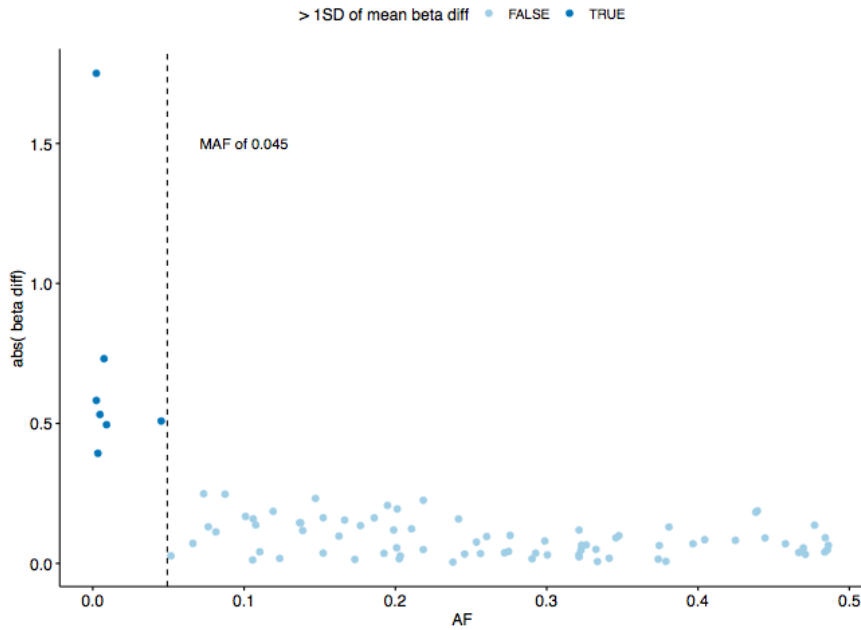


B. Conditioning on rs356182 and rs6830166



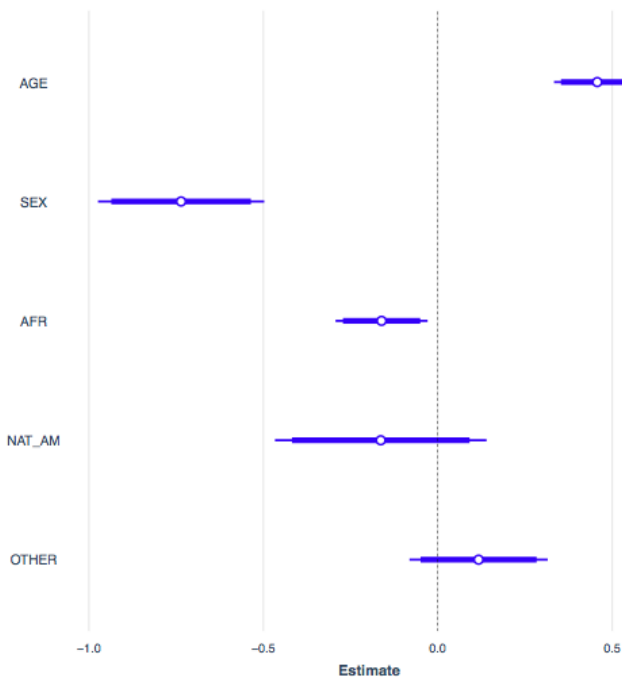
We first conditioned on rs356182, the lead variant from European-ancestry PD meta-analyses, followed by adding rs6830166, the SNP with the lowest P-value after conditioning on rs356182. We fit a logistic mixed model using the GMMAT in R, with the same covariates as our GWAS plus the SNP(s). The red dashed line displays a significance level adjusting for number of GWAS-significant variants; the black dashed line represents a regional significance level adjusting for 220 tests. Results are shown after conditioning on rs356182 (**A**) and rs356182 and rs6830166(**B**). Note that the evidence for independence depends on the chosen significance level.

Supplementary Figure 6: Difference in study beta coefficients by MAF



Six variants demonstrated a difference in beta coefficients from LARGE-PD and Nalls et al.¹ greater than one standard deviation of the mean. All of the variants have a MAF lower than 0.0452; three have a MAC lower than 10. This was partially due to the larger effect sizes of rare variants, but also could be attributed to inaccurate beta estimates due to insufficient sample size.

Supplementary Figure 7: PD risk by ancestry

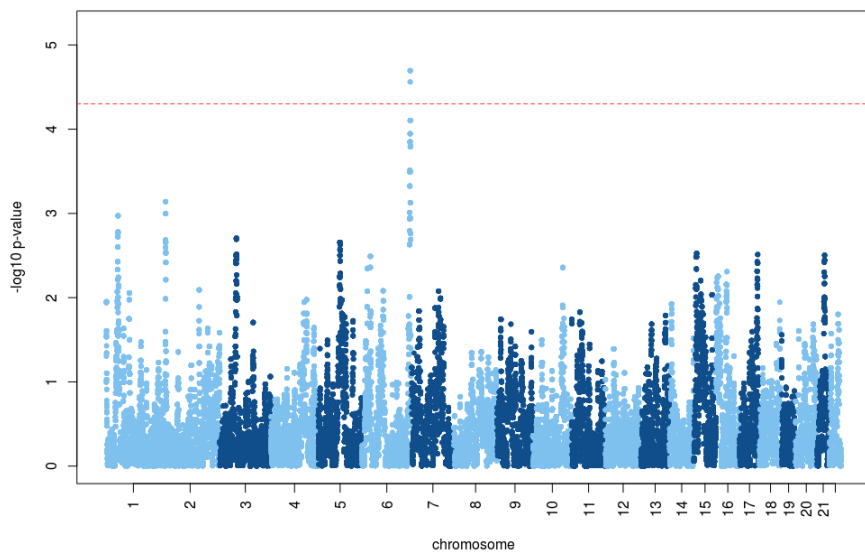


PD risk by ancestry as determined via logistic regression in R. Ancestry proportions were estimated using ADMIXTURE and a K of 5; two of the ancestry components that were not well-represented in

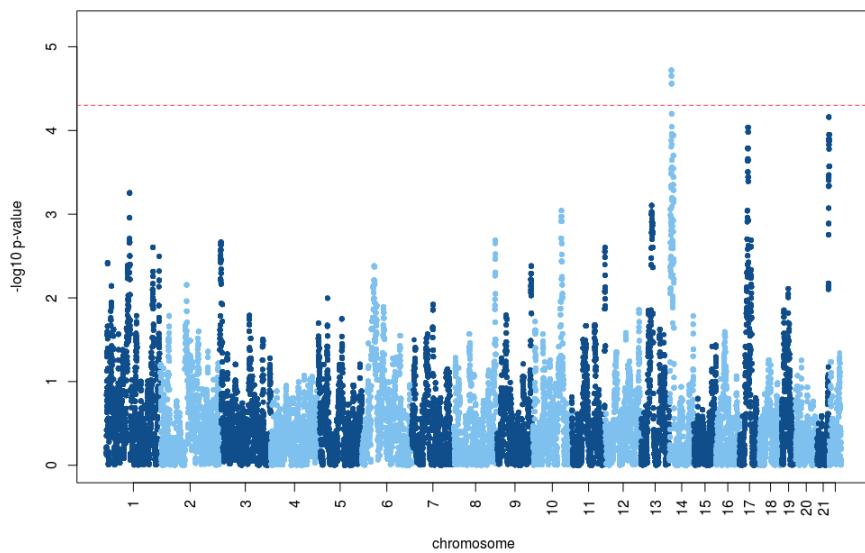
LARGE-PD are aggregated as “Other” in this analysis. The logistic model was fit adjusting for age, sex, LARGE-PD site, African ancestry proportion, East Asian ancestry proportion, and Amerindian ancestry proportion; we limited the analysis to the unrelated subset of LARGE-PD. The European ancestry proportion is used as the reference. Age, sex, and African ancestry were significant (P -value < 0.05). Beta coefficients were plotted using the `jtools` package in R.

Supplementary Figure 8: Admixture mapping single-ancestry models

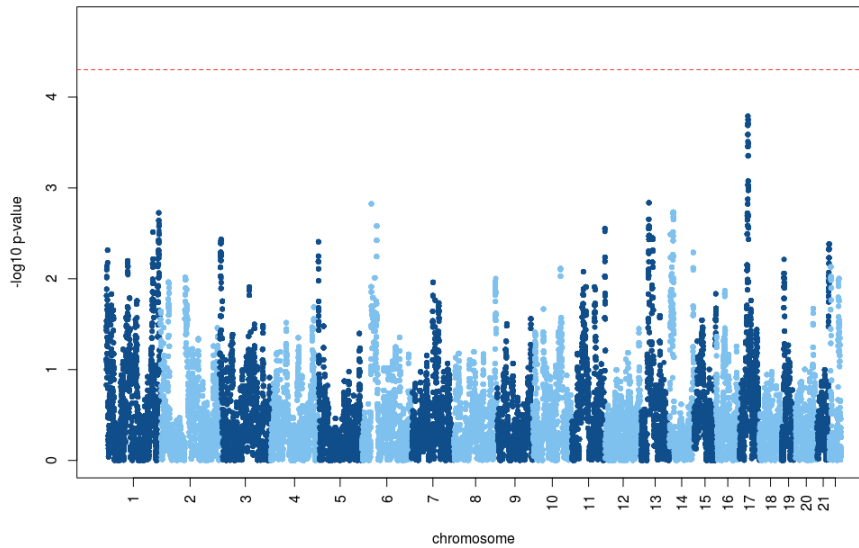
A. African



B. Native American



C. European



A: Results from admixture mapping as implemented in GENESIS including only the African local ancestry term. Dashed red line indicates statistical significance (**see supplementary methods**)

B: Results from admixture mapping as implemented in GENESIS including only the Amerindian local ancestry term. Dashed red line indicates statistical significance (**see supplementary methods**)

C: Results from admixture mapping as implemented in GENESIS including only the European local ancestry term. Dashed red line indicates statistical significance (**see supplementary methods**)