

## Short Article

# Seasonal human coronavirus antibodies are boosted upon SARS-CoV-2 infection but not associated with protection

Elizabeth M. Anderson<sup>1,13</sup>, Eileen C. Goodwin<sup>1,13</sup>, Anurag Verma<sup>2,13</sup>, Claudia P. Arevalo<sup>1</sup>, Marcus J. Bolton<sup>1</sup>, Madison E. Weirick<sup>1</sup>, Sigrid Gouma<sup>1</sup>, Christopher M. McAllister<sup>1</sup>, Shannon R. Christensen<sup>1</sup>, JoEllen Weaver<sup>2</sup>, Phillip Hicks<sup>3</sup>, Tomaz B. Manzoni<sup>1</sup>, Oluwatosin Oniyide<sup>4</sup>, Holly Ramage<sup>5,12</sup>, Divij Mathew<sup>6,7</sup>, Amy E. Baxter<sup>6,7</sup>, Derek A. Oldridge<sup>6,7</sup>, Allison R. Greenplate<sup>6,7</sup>, Jennifer E. Wu<sup>6,7,8</sup>, Cécile Alanio<sup>6,7,8</sup>, Kurt D'Andrea<sup>6,7</sup>, Oliva Kuthuru<sup>6,7</sup>, Jeanette Dougherty<sup>6,7</sup>, Ajinkya Pattekar<sup>6,7</sup>, Justin Kim<sup>6,7</sup>, Nicholas Han<sup>6,7</sup>, Sokratis A. Apostolidis<sup>6,7</sup>, Alex C. Huang<sup>6,7</sup>, Laura A. Vella<sup>6,7,9</sup>, The UPenn COVID Processing Unit<sup>10</sup>, E. John Wherry<sup>6,7,8</sup>, Nuala J. Meyer<sup>4</sup>, Sara Cherry<sup>5</sup>, Paul Bates<sup>1,11</sup>, Daniel J. Rader<sup>2</sup>, Scott E. Hensley<sup>1,\*</sup>

<sup>1</sup>Department of Microbiology, Perelman School of Medicine, University of Pennsylvania, Philadelphia, PA, USA

<sup>2</sup>Department of Genetics, Perelman School of Medicine, University of Pennsylvania, Philadelphia, PA, USA

<sup>3</sup>School of Veterinary Medicine, University of Pennsylvania, Philadelphia, PA USA

<sup>4</sup>Division of Pulmonary, Allergy, and Critical Care Medicine and Center for Translational Lung Biology, University of Pennsylvania Perelman School of Medicine, Philadelphia PA

<sup>5</sup>Department of Pathology and Laboratory Medicine, University of Pennsylvania, Philadelphia, PA, USA

<sup>6</sup>Institute for Immunology, Perelman School of Medicine, University of Pennsylvania, Philadelphia, PA, USA

<sup>7</sup>Department of Systems Pharmacology and Translational Therapeutics, University of Pennsylvania, Philadelphia, PA, USA

<sup>8</sup>Parker Institute for Cancer Immunotherapy, Perelman School of Medicine, University of Pennsylvania, Philadelphia, PA, USA

<sup>9</sup>Division of Infectious Diseases, Department of Pediatrics, Children's Hospital of Philadelphia, Philadelphia, PA, USA

<sup>10</sup>The UPenn COVID Processing Unit is a composed of individuals at the University of Pennsylvania who volunteered time and effort to enable the study of COVID-19 patients during the pandemic. Members are listed in the acknowledgement section of this paper.

<sup>11</sup>Penn Center for Research on Coronavirus and Other Emerging Pathogens, University of Pennsylvania, Philadelphia, PA USA

<sup>12</sup>Current affiliation: Department of Microbiology and Immunology, Thomas Jefferson University, Philadelphia, PA USA

<sup>13</sup>These authors contributed equally to this work: Elizabeth M. Anderson, Eileen C. Goodwin, and Anurag Verma

\*Correspondence: [hensley@pennmedicine.upenn.edu](mailto:hensley@pennmedicine.upenn.edu)

1 **SUMMARY**

2 Severe acute respiratory syndrome coronavirus 2 (SARS-CoV-2) has rapidly spread within the  
3 human population. Although SARS-CoV-2 is a novel coronavirus, most humans had been  
4 previously exposed to other antigenically distinct common seasonal human coronaviruses  
5 (hCoVs) before the COVID-19 pandemic. Here, we quantified levels of SARS-CoV-2-reactive  
6 antibodies and hCoV-reactive antibodies in serum samples collected from 204 humans before the  
7 COVID-19 pandemic. We then quantified pre-pandemic antibody levels in serum from a  
8 separate cohort of 252 individuals who became PCR-confirmed infected with SARS-CoV-2.  
9 Finally, we longitudinally measured hCoV and SARS-CoV-2 antibodies in the serum of  
10 hospitalized COVID-19 patients. Our studies indicate that most individuals possessed hCoV-  
11 reactive antibodies before the COVID-19 pandemic. We determined that ~23% of these  
12 individuals possessed non-neutralizing antibodies that cross-reacted with SARS-CoV-2 spike  
13 and nucleocapsid proteins. These antibodies were not associated with protection against SARS-  
14 CoV-2 infections or hospitalizations, but paradoxically these hCoV cross-reactive antibodies  
15 were boosted upon SARS-CoV-2 infection.

16

17

18

19 **KEYWORDS**

20 SARS-CoV-2; COVID-19; coronavirus; antibody

## 21 INTRODUCTION

22 Coronaviruses commonly infect humans<sup>1-4</sup>. The severe acute respiratory syndrome coronavirus 2  
23 (SARS-CoV-2) emerged at the end of 2019 and has rapidly spread among humans, many of  
24 whom have been previously exposed to common seasonal human coronaviruses (hCoVs)<sup>5</sup>.  
25 Common seasonal hCoVs include the betacoronaviruses HKU1 and OC43 and the  
26 alphacoronaviruses 229E and NL63<sup>6-9</sup>. SARS-CoV-2 belongs to the betacoronavirus genus and is  
27 more closely related to HKU1 and OC43 compared to the alphacoronaviruses 229E and NL63<sup>10</sup>.  
28 A recent study examining electronic medical records concluded that recent hCoV infections are  
29 not associated with decreased SARS-CoV-2 infections, but are associated with reducing the  
30 severity of Coronavirus Disease 2019 (COVID-19)<sup>11</sup>. It is unknown if prior hCoV exposures  
31 elicit antibodies that prevent or alter the outcomes of SARS-CoV-2 infections. Further, it is  
32 unknown if different aged individuals have distinct hCoV immune histories that can affect  
33 SARS-CoV-2 susceptibility. To address this, we completed a serological survey using serum  
34 samples collected from different aged humans prior to the COVID-19 pandemic. We quantified  
35 levels of antibodies reactive to viral proteins from hCoVs and determined if these antibodies  
36 were associated with SARS-CoV-2 protection. Finally, we completed a series of studies using  
37 serum collected from COVID-19 patients to determine if antibodies reactive to hCoVs are  
38 boosted upon SARS-CoV-2 infections.

## 39 RESULTS

### 40 Identification of SARS-CoV-2-reactive Antibodies in Human Sera Collected Prior to the 41 COVID-19 Pandemic

42 We completed ELISAs to quantify levels of pre-pandemic SARS-CoV-2-reactive IgG  
43 antibodies in 204 human serum samples collected in 2017. We tested serum samples collected

44 from 36 children (age 1-17) at the Children’s Hospital of Philadelphia originally collected for  
45 lead testing and 168 adults (age 18-90) who had been recruited into the Penn Medicine Biobank.  
46 We tested Penn Medicine Biobank samples from individuals who had no medical history of  
47 cancer or organ transplantation, pregnancy during the previous 9 months, or an infectious disease  
48 within the previous 28 days prior to blood draw. Using these samples, we previously found that  
49 different aged individuals possess H3N2 influenza virus antibodies that have different  
50 specificities<sup>12</sup>.

51 We found that 5.4% of serum samples collected in 2017 contained IgG antibodies that  
52 reacted to the SARS-CoV-2 full length spike (S) protein (**Figure 1a**), 2.0% of samples contained  
53 antibodies that reacted to the receptor binding domain (RBD) of the SARS-CoV-2 S protein  
54 (**Figure 1b**), and 18.6% of samples contained antibodies that reacted to the SARS-CoV-2  
55 nucleocapsid (N) protein (**Figure 1c**). Several pre-pandemic serum samples contained antibodies  
56 that were at similar levels as those in serum from PCR-confirmed COVID-19 recovered donors  
57 (**Figure 1a-c**). Most serum samples with antibodies reactive to the SARS-CoV-2 full length S  
58 protein did not have antibodies that reacted to the SARS-CoV-2 S-RBD protein (**Figure 1d**),  
59 which is consistent with a recent study showing that some individuals possessed pre-pandemic  
60 antibodies against the S2 domain of the SARS-CoV-2 S protein<sup>13</sup>. In contrast to serum antibodies  
61 isolated from PCR-confirmed COVID-19 recovered donors, serum antibodies from individuals  
62 collected before the pandemic had very low or undetectable levels of SARS-CoV-2 neutralizing  
63 antibodies, regardless of whether or not the sample possessed cross-reactive antibodies against  
64 SARS-CoV-2 S and N proteins (**Figure 1e**). We found no obvious differences in levels of  
65 SARS-CoV-2 cross-reactive antibodies among donors with different birth years (**Figure S1 a-c**).  
66

67 **Humans with Pre-pandemic SARS-CoV-2-reactive Antibodies Had Elevated Levels of**  
68 **Antibodies Against Previously Circulating Betacoronaviruses**

69 We completed ELISAs to quantify levels of pre-pandemic hCoV-reactive IgG antibodies  
70 in all 204 human serum samples collected in 2017. Most serum samples possessed antibodies  
71 that reacted to the S protein of 229E and NL63 (both alphacoronaviruses), as well as OC43 (a  
72 betacoronavirus) (**Figure S1d-f**). There were no major differences in levels of these antibodies  
73 among individuals with different birth years, however serum from very young children possessed  
74 lower levels of antibodies reactive to the 229E and NL63 S proteins (**Figure S1d-f**). We  
75 completed full antibody titrations to directly compared levels of hCoV antibodies in a subset of  
76 pre-pandemic samples from individuals who either did (n=12) or did not (n=51) possess cross-  
77 reactive SARS-CoV-2 antibodies (**Figure 1f-h**). Pre-pandemic antibody levels against the 229E  
78 and NL63 alphacoronavirus S proteins were similar among individuals with and without SARS-  
79 CoV-2 reactive antibodies (**Figure 1f-g**). In contrast, antibody levels against the betacoronavirus  
80 OC43 S protein were higher in individuals with SARS-CoV-2 reactive antibodies compared to  
81 individuals who did not possess pre-pandemic SARS-CoV-2 reactive antibodies (**Figure 1h**).  
82 These data suggest that pre-pandemic SARS-CoV-2 reactive antibodies were likely elicited by  
83 previously circulating betacoronavirus strains, such as OC43.

84

85 **Pre-existing hCoV Cross-reactive Antibodies Were Not Associated With Protection From**  
86 **SARS-CoV-2 Infections**

87 It is unknown if antibodies elicited by prior hCoV infections protect against SARS-CoV-  
88 2 infections and/or prevent severe COVID-19. To address this, we measured SARS-CoV-2 IgG  
89 antibodies in pre-pandemic serum samples from 251 individuals who subsequently went on to

90 become PCR-confirmed infected with SARS-CoV-2 and in a control group of pre-pandemic  
91 samples from 251 matched individuals who did not become infected with SARS-CoV-2. Pre-  
92 pandemic samples were collected by the Penn Medicine BioBank from August 2013 to March  
93 2020 and PCR-confirmed SARS-CoV-2 infections were identified by nasopharyngeal swab PCR  
94 testing results in electronic health records. We found that 2.2% samples possessed pre-pandemic  
95 antibodies reactive to the SARS-CoV-2 full length S protein, 0.6% samples possessed pre-  
96 pandemic antibodies reactive to the SARS-CoV-2 S-RBD, and 23.9% samples possessed pre-  
97 pandemic antibodies reactive to the SARS-CoV-2 N protein. Importantly, we found no  
98 differences in SARS-CoV-2-reactive antibodies in serum samples from individuals who did or  
99 did not become subsequently infected with SARS-CoV-2 (**Figure 2a**; S protein:  $p=0.62$ , S-RBD:  
100  $p=0.49$ , N protein:  $p=0.34$  and **Table S1** and **Table S2**). We also measured antibodies reactive to  
101 the OC43 S protein and found no differences among samples from individuals who did or did not  
102 become infected with SARS-CoV-2 (**Figure 2a**;  $p=0.90$  and **Table S1** and **Table S2**). Among  
103 those with PCR-confirmed SARS-CoV-2 infections, we found no relationship between antibody  
104 titers and hospitalization or disease severity among hospitalized patients (**Table S1** and **Table**  
105 **S2**). We found no relationship between antibody titers and the need for respiratory support and  
106 admittance into the ICU following SARS-CoV-2 infection (**Table S1** and **Table S2**).

107 Previous studies indicated that immunity to hCoV can be short-lived<sup>14</sup> and a recent study  
108 documented that antibody titers against hCoV can fluctuate over time<sup>5</sup>, presumably due to  
109 repetitive hCoV exposures. In our study, pre-pandemic serum samples were collected from 2013-  
110 2020 and therefore it is possible that antibody levels in some of the samples collected several  
111 years prior to 2020 do not accurately reflect antibody levels present during the COVID-19  
112 pandemic. To address this, we compared SARS-CoV-2 and OC43 IgG antibody titers in the

113 serum of individuals in our cohort who had samples collected within one year of the pandemic  
114 (between April 2019 and March 2020). Using this smaller cohort (n=39 SARS-CoV-2 cases and  
115 n=57 controls), we still found no differences in levels of antibodies reactive to the SARS-CoV-2  
116 S protein, S-RBD protein, N protein, or OC43 S protein (**Figure 2B**). Taken together, our data  
117 suggest that a subset of humans possessed non-neutralizing cross-reactive antibodies against  
118 SARS-CoV-2 S and N proteins prior to the COVID-19 pandemic, but these antibodies were not  
119 associated with protection from SARS-CoV-2 infections or reducing hospitalizations upon  
120 SARS-CoV-2 infections.

121

### 122 **SARS-CoV-2 Boosts Antibodies Reactive to Other Human Betacoronaviruses**

123 Recent studies indicate that COVID-19 recovered donors possess higher levels of  
124 antibodies against seasonal betacoronaviruses<sup>13</sup>. To determine if antibodies against the S protein  
125 of hCoVs are boosted upon SARS-CoV-2 infection, we measured 229E, NL63, OC43, and  
126 SARS-CoV-2 S IgG antibody levels in sera collected longitudinally from 27 hospitalized  
127 COVID-19 patients. Serum IgG antibodies reactive to the S protein of the 229E and NL63  
128 alphacoronaviruses did not change over 7 days of hospitalization (**Figure 3A-B**). Conversely,  
129 serum antibodies reactive to the S protein of OC43 and SARS-CoV-2 betacoronaviruses  
130 significantly increased over the course of hospitalization (**Figure 3A-B**). The magnitude of  
131 OC43 S antibody boost was not associated with outcome of disease (**Figure 3C**). Taken together,  
132 these data suggest that cross-reactive antibodies elicited by previous hCoV infections are not  
133 associated with protection from SARS-CoV-2 infections, but are boosted following infection  
134 with SARS-CoV-2.

135

## 136 DISCUSSION

137 Our study demonstrates that ~23% of individuals possessed SARS-CoV-2 cross-reactive  
138 serum antibodies prior to the COVID-19 pandemic. Using samples collected in 2017, we found  
139 that pre-pandemic cross-reactive antibodies directed against the SARS-CoV-2 N protein were  
140 more prevalent compared to those directed against the SARS-CoV-2 S protein (18.6%  
141 seropositive versus 5.4% seropositive). We found that most individuals possessed pre-pandemic  
142 serum antibodies reactive to the S proteins of 229E, NL63, and OC43 (**Figure S2**); however,  
143 pre-pandemic samples with detectable levels of SARS-CoV-2 antibodies had higher levels of  
144 antibodies against the OC43 S protein (**Figure 1H**). Although our data suggest that prior  
145 infections with seasonal human betacoronaviruses (such as OC43) likely elicit antibodies that  
146 cross-react with SARS-CoV-2 proteins, it is unclear why only a subset of OC43 seropositive  
147 individuals possessed antibodies reactive to SARS-CoV-2 prior to the pandemic. Further studies  
148 will be needed to determine the temporal relationship between seasonal human betacoronavirus  
149 infections and the induction of SARS-CoV-2 cross-reactive antibodies. Further studies  
150 investigating the relationship of pre-pandemic antibodies against other betacoronaviruses, such  
151 as HKU1, with pre-pandemic SARS-CoV-2 cross-reactive antibodies are also needed.

152 We show that pre-pandemic SARS-CoV-2 cross-reactive antibodies are non-neutralizing  
153 and are not associated with reducing SARS-CoV-2 infections and hospitalizations. We compared  
154 serum from individuals who were and were not hospitalized after SARS-CoV-2 infections and  
155 found no differences in pre-pandemic antibody levels against SARS-CoV-2 and OC43 (**Figure**  
156 **2**). We evaluated the need for respiratory support and admittance into the ICU as a proxy for  
157 COVID-19 severity (**Table S2**); however, larger cohorts including individuals with a large range  
158 of different clinically-defined disease severities will be required to determine if pre-pandemic



159 levels of antibodies are associated with reducing some aspects of severe COVID-19. Additional  
160 studies need to be completed to determine if neutralizing antibodies elicited by SARS-CoV-2  
161 infections protect against subsequent reinfections with SARS-CoV-2.

162 Further studies also need to be completed to determine how immune history affects de  
163 novo immune responses following SARS-CoV-2 infection. We find that individuals infected  
164 with SARS-CoV-2 produce antibodies reactive to both the SARS-CoV-2 S protein and OC43 S  
165 protein (**Figure 3**). In the case of influenza viruses, sequential infections with antigenically  
166 distinct strains can elicit antibodies against conserved epitopes between the strains and it is  
167 unclear if these cross-reactive antibodies inhibit de novo immune responses or affect disease  
168 severity<sup>15</sup>. Further studies are needed to precisely map the footprints of OC43 S-reactive  
169 antibodies elicited by SARS-CoV-2 infections. Additional studies need to be completed to  
170 determine if these antibodies help resolve infections or if they enhance disease in COVID-19  
171 patients.

172

173

174

175

176

177

178 **STAR METHODS**

179 **KEY RESOURCES TABLE**

REAGENT or RESOURCE	SOURCE	IDENTIFIER
<b>Antibodies</b>		
Goat anti-human IgG-HRP	Jackson ImmunoResearch	109-036-098
mAb CR3022	Expressed for this paper	
mAb 1E9F9	Absolute Antibody	Ab01402-2.0
<b>Bacterial and Virus Strains</b>		
SARS-CoV-2 VSV pseudotypes	Generated for this paper	N/A
<b>Biological Samples</b>		
Pre-pandemic adult serum samples	Penn Medicine Biobank (PMBB)	N/A
Pre-pandemic children serum samples	Children's Hospital of Philadelphia (CHOP)	N/A
COVID-19 patient serum samples	Hospital of the University of Pennsylvania (HUP)	N/A
<b>Chemicals, Peptides, and Recombinant Proteins</b>		
SARS-CoV-2 spike protein	Expressed for this paper	N/A
SARS-CoV-2 RBD protein	Expressed for this paper	N/A
SARS-CoV-2 nucleocapsid protein	Sino Biological	Cat. 40588-V08B
OC43 spike protein	Sino Biological	Cat. 40607-V08B
NL63 spike protein	Sino Biological	Cat. 40604-V08B
229E spike protein	Sino Biological	Cat. 40605-V08B
<b>Experimental Models: Cell Lines</b>		
293T	ATCC	Cat. CRL-3216, RRID:CVCL_0063
293F	Laboratory of Scott Hensley, University of Pennsylvania, PA	Thermo Fisher cat. R79007
VeroE6/TMPRSS	Laboratory of Stefan Pohlman, German Primate Center, Leibniz Institute for Primate Research	Hoffman et al., 2020
<b>Recombinant DNA</b>		
Plasmid: pCAGGS SARS-CoV-2 spike	Laboratory of Florian Krammer, Mt. Sinai, NY	Amanat et al., 2020
Plasmid: pCAGGS SARS-CoV-2 RBD	Laboratory of Florian Krammer, Mt. Sinai, NY	Amanat et al., 2020
Plasmid: pCG1 SARS- 2 S	Laboratory of Stefan Pohlman, German Primate Center, Leibniz Institute for Primate Research	Hoffman et al., 2020
<b>Software and Algorithms</b>		
Prism8	GraphPad Software	<a href="http://www.graphpad.com/scientific-software/prism/">www.graphpad.com/scientific-software/prism/</a>
Flouro-X	ImmunoSpot	<a href="http://www.immunospot.com/ind-ex-ctl">www.immunospot.com/ind-ex-ctl</a>

## 180 **RESOURCES AVAILABILITY**

### 181 **Lead Contact**

182 Further information and requests for resources and reagents should be directed to and will be  
183 fulfilled by the Lead Contact, Scott E. Hensley ([hensley@penndmedicine.upenn.edu](mailto:hensley@penndmedicine.upenn.edu)).

### 184 185 **Materials Availability**

186 All unique reagents generated in this study will be available from the Lead Contact upon  
187 reasonable request.

### 188 189 **Data and Code Availability**

190 The published article includes all data generated or analyzed during this study.

## 191 192 193 **EXPERIMENTAL MODEL AND SUBJECT DETAILS**

### 194 **Pre-pandemic Human Serum Samples**

195 Serum samples shown in **Figure 1** were collected before the COVID-19 pandemic between May  
196 and August of 2017 from individuals at the Children’s Hospital of Philadelphia (CHOP; n=36,  
197 children age 0-18 years old) and through the Penn Medicine BioBank (n=168, adults  $\geq$ 18 years  
198 old). Samples from CHOP were leftover de-identified blood samples collected for routine lead  
199 testing.

200  
201 Serum samples shown in **Figure 2** were collected via the Penn Medicine BioBank prior to the  
202 pandemic (n=502, between August 2013 and March 2020). These samples were from adults who  
203 subsequently had a reverse transcription quantitative polymerase chain reaction (RT-qPCR)  
204 confirmed SARS-CoV-2 infection using nasopharyngeal swabs (cases, n=251), and those who  
205 had SARS-CoV-2 PCR negative results (controls, n=251). The RT-qPCR clinical testing results  
206 were acquired from Penn Medicine electronic health records and test results between March  
207 2020 and August 2020 were included in the analysis. The Penn Medicine BioBank is an  
208 established repository that routinely collects blood products from donors visiting the University  
209 of Pennsylvania Healthcare system upon written informed consent. All studies were approved by  
210 the University of Pennsylvania Institutional Review Board.

211

## 212 **Human Samples Collected After SARS-CoV-2 Infection**

213 Serum samples were obtained from recovered convalescent donors who had a history of PCR-  
214 confirmed SARS-CoV-2 infection (n=15). These samples were used in experiments shown in  
215 Figure 1. Additionally, plasma samples were collected from patients admitted to the Hospital at  
216 the University of Pennsylvania (HUP) with PCR-confirmed SARS-CoV-2 infections (n=27), as  
217 previously described<sup>16</sup>. Hospital inpatients were categorized for pneumonia severity using a  
218 WHO ordinal scale that was based on the level of oxygen support needed at day 0 and day 7. All  
219 samples were collected after obtaining informed consent and studies were approved by the  
220 University of Pennsylvania Institutional Review Board.

221

## 222 **Cell lines**

223 293F cells were from Thermo fisher (Thermo Fisher cat. R79007). 293T cells were from ATCC  
224 (ATCC cat. CRL-3216, RRID:CVCL\_0063). VeroE6/TMPRSS2 cells were a gift from Stefan  
225 Pohlman (German Primate Center, Leibniz Institute for Primate Research) as described  
226 previously<sup>17</sup>. All cell lines were cultured using manufacturer's guidelines and used as described  
227 in Method Details below.

228

229

## 230 **METHOD DETAILS**

### 231 **Quantification of serum antibody titers**

232 Serum antibody titers against SARS-CoV-2 and other human coronavirus (hCoV) antigens were  
233 quantified by enzyme-linked immunosorbent assays (ELISA) as previously described<sup>18</sup>. Plasmids  
234 encoding the full-length SARS-CoV-2 spike (S) protein and the receptor binding domain of the S  
235 (S-RBD) were provided by Florian Krammer (Icahn School of Medicine at Mt. Sinai, New York  
236 City NY)<sup>19</sup>. SARS-CoV-2 S-RBD and the SARS-CoV-2 S proteins were purified from 293F  
237 transfected cells by Ni-NTA resin. SARS-CoV-2 nucleocapsid (N) protein, and full-length hCoV  
238 spike antigens (OC43, 229E, and NL63) were purchased (Sino Biological, Wayne PA; cat.  
239 40588-V08B, 40607-V08B, 40604-V08B, and 40605-V08B, respectively) and reconstituted in  
240 Dulbecco's phosphate buffered saline (DPBS). ELISA plates (Thermo Fisher Scientific: cat. 14-  
241 245-153) were coated overnight at 4°C with either 2 µg/mL SARS-CoV-2 antigen, 1.5 µg/mL  
242 hCOV antigen, or DPBS to control for background. Sera was heat-inactivated in a 56°C water

243 bath for 1 hour prior to serial dilutions starting at 1:50 in dilution buffer (DPBS supplemented  
244 with 1% milk and 0.1% Tween-20). ELISA plates were blocked with 200 $\mu$ L of blocking buffer  
245 (DPBS supplemented with 3% milk and 0.1% Tween-20), washed 3 times with PBS plus 2%  
246 Tween (PBS-T), and 50 $\mu$ L of diluted sera was added. After 2 hours of incubation, ELISA plates  
247 were washed 3 times with PBS-T and bound antibodies were detected using a 1:5000 dilution of  
248 goat anti-human IgG conjugated to horseradish peroxidase (Jackson ImmunoResearch  
249 Laboratories, West Grove PA: cat. 109-036-098). ELISA plates were developed with the  
250 addition of 50  $\mu$ L SureBlue 3, 3', 5, 5'-tetramethylbenzidine substrate (SeraCare: material  
251 number 5120-0077) and the reactions were stopped by the addition of 25 $\mu$ L of 250mM  
252 hydrochloric acid after 5 minutes. Optical densities at 450nm wavelength were obtained on a  
253 SpectraMax 190 microplate reader (Molecular Devices, San Jose CA). Serum antibody titers  
254 were expressed as the reciprocal serum dilution at a set OD that was based off of a standard  
255 curve from the monoclonal antibody CR3022 (a gift from Ian Wilson, Scripps) starting at  
256 0.5 $\mu$ g/mL (for S-RBD and S ELISAs) or serially diluted pooled serum (for SARS-CoV-2 N  
257 ELISAs and hCoV S ELISAs). Standard curves were included on every plate to control for plate-  
258 to-plate variation. Antibody titers for each sample were measured in at least two technical  
259 replicates performed on separate days.

260

### 261 **Generation of SARS-CoV-2 pseudotypes**

262 SARS-CoV-2 pseudotypes were generated with a previously described vesicular stomatitis virus  
263 (VSV) pseudotype platform<sup>20</sup>. Briefly, pseudotyped VSV virions with SARS-CoV-2 Spike were  
264 produced through transfection of 293T with 35 $\mu$ g of pCG1 SARS-CoV-2 S delta18 expression  
265 plasmid encoding a codon optimized SARS-CoV-2 S gene with an 18-residue truncation in the  
266 cytoplasmic tail (kindly provided by Stefan Pohlmann)<sup>17</sup>. 30 hours post transfection, the SARS-  
267 CoV-2 spike expressing cells were infected for 2-4 hours with VSV-G pseudotyped VSV $\Delta$ G-  
268 RFP at a multiplicity of infection (MOI) of  $\sim$ 1-3. Then, the cells were washed twice with media  
269 to remove unbound virus. 28-30 hours after infection, the media containing the VSV $\Delta$ G-RFP  
270 SARS-CoV-2 pseudotypes were harvested and clarified by centrifugation two times at 6000xg.  
271 SARS-CoV-2 pseudotypes were aliquoted and stored at -80 $^{\circ}$ C until used for antibody  
272 neutralization analysis.

273

## 274 **Quantification of SARS-CoV-2 neutralizing antibody titers**

275 Serum SARS-CoV-2 neutralizing antibodies were measured as previously described<sup>20</sup>. Vero E6  
276 cells stably expressing TMPRSS2 were seeded in 100 $\mu$ l at  $2.5 \times 10^4$  cells/well in a 96 well  
277 collagen coated plate. The next day, heat inactivated serum samples were serially diluted 2-fold  
278 and mixed with 50-200 focus forming units/well of VSV $\Delta$ G-RFP SARS-CoV-2 pseudotype  
279 virus and 600ng/ml of 1E9F9, a mouse anti-VSV Indiana G (Absolute Antibody, Oxford, UK:  
280 cat# Ab01402-2.0). The serum-virus mixture was incubated for 1 hour at 37°C before being  
281 plated on VeroE6 TMPRSS2 cells. 23-24 hours post infection, the cells were washed, fixed with  
282 4% paraformaldehyde, and visualized on an S6 FluoroSpot Analyzer (CTL, Shaker Heights OH)  
283 and individual infected foci were enumerated. The focus reduction neutralization titer 50%  
284 (FRNT<sub>50</sub>) was measured as the greatest serum dilution at which focus count was reduced by at  
285 least 50% relative to control cells that were infected with pseudotype virus in the absence of  
286 human serum. FRNT<sub>50</sub> titers for each sample were measured in at least two technical replicates  
287 performed on separate days.

288

289

## 290 **QUANTIFICATION AND STATISTICAL ANALYSIS**

291 Statistical analyses were performed using Prism version 8 (GraphPad Software, San Diego CA).  
292 Reciprocal serum dilution antibody titers were log<sub>2</sub> transformed for statistical analysis. ELISA  
293 antibody titers below the limit of detection (LOD; reciprocal titer <50) were set to a reciprocal  
294 titer of 25. Log<sub>2</sub> transformed antibody titers were compared with unpaired t-tests and statistical  
295 significance was set to p-value <0.05. Linear regressions were also performed using log<sub>2</sub>  
296 transform titers and untransformed data from the other variables. We compared antibody titers in  
297 pre-pandemic serum samples from individuals who did and did not have a subsequent PCR-  
298 confirmed SARS-CoV-2 infection. For these analyses we selected serum sample from  
299 individuals with RT-PCR negative results matching sex, age, and race for each SARS-CoV-2  
300 PCR-confirmed case (RT-PCR positive) to define controls for our cohort. In instances we did not  
301 find matched controls, we randomly selected patients with RT-PCR negative test results. We also  
302 compared antibody titers in pre-pandemic serum samples among SARS-CoV-2 PCR-confirmed  
303 individuals in relationship to hospitalization or need for respiratory support due to COVID-19.  
304 Multivariate logistic regression was used to compare the antibody differences for these studies.

305 All the models were adjusted by sex, age, race, and analyses were performed in  $R^{21}$ . We  
306 compared Log2 transformed antibody titers in COVID-19 hospitalized patients at day 0 and day  
307 7. We also compared the fold change in titer by day 7. We compared the fold change in OC43  
308 titers between patients who survived and patients who died by day 28 of hospitalization.

309

310

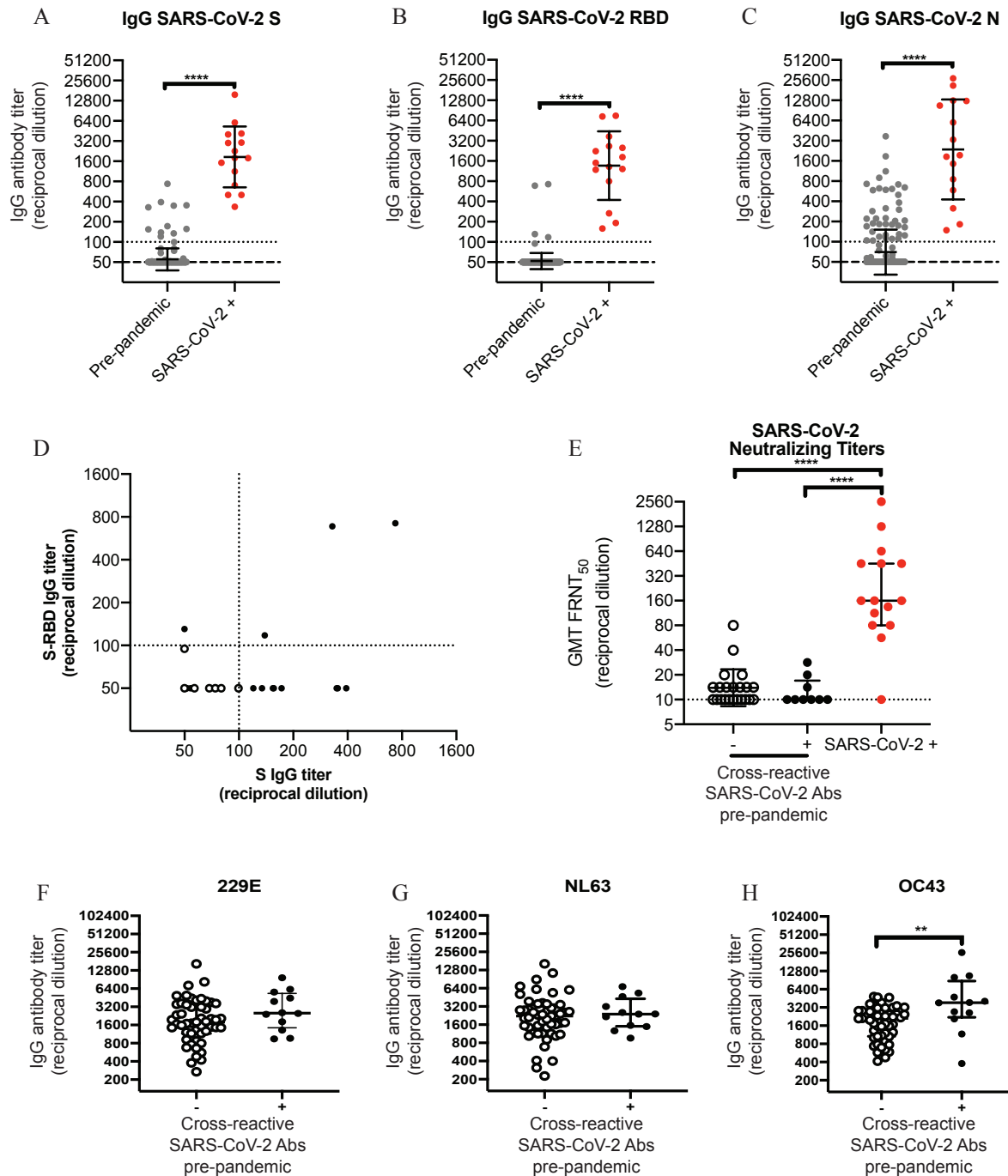
### 311 **ACKNOWLEDGEMENTS**

312 EMA and TBM were supported by the NIH Training in Virology T32 Program through grant  
313 number T32-AI-007324. PH was supported by the NIH Emerging Infectious Diseases T32  
314 Program T32-AI055400. PB was supported by a Peer Reviewed Medical Research Program  
315 award PR182551 and grants from the NIH (R21AI129531 and R21AI142638). This work was  
316 supported by institutional funds from the University of Pennsylvania and NIH HL137006 (NJM)  
317 and HL137915 (NJM). We thank J. Lurie, J. Embiid, J. Harris, and D. Blitzer for philanthropic  
318 support. We thank all members of the Wherry Lab and the Penn COVID-19 Sample Processing  
319 Unit (Zahidul Alam, Mary M. Addison, Katelyn T. Byrne, Aditi Chandra, H el ene C. Descamps,  
320 Yaroslav Kaminskiy, Jacob T. Hamilton, Julia Han Noll, Dalia K. Omran, Eric Perkey, Elizabeth  
321 M. Prager, Dana Pueschl, Jennifer B. Shah, Jake S. Shilan, Ashley N. Vanderbeck)  
322 for sample procurement, processing, and logistics. We thank the staff of the PMBB. We thank F.  
323 Krammer (Mt. Sinai) for sending us the SARS-CoV-2 spike RBD expression plasmids.

324

325

326 FIGURES

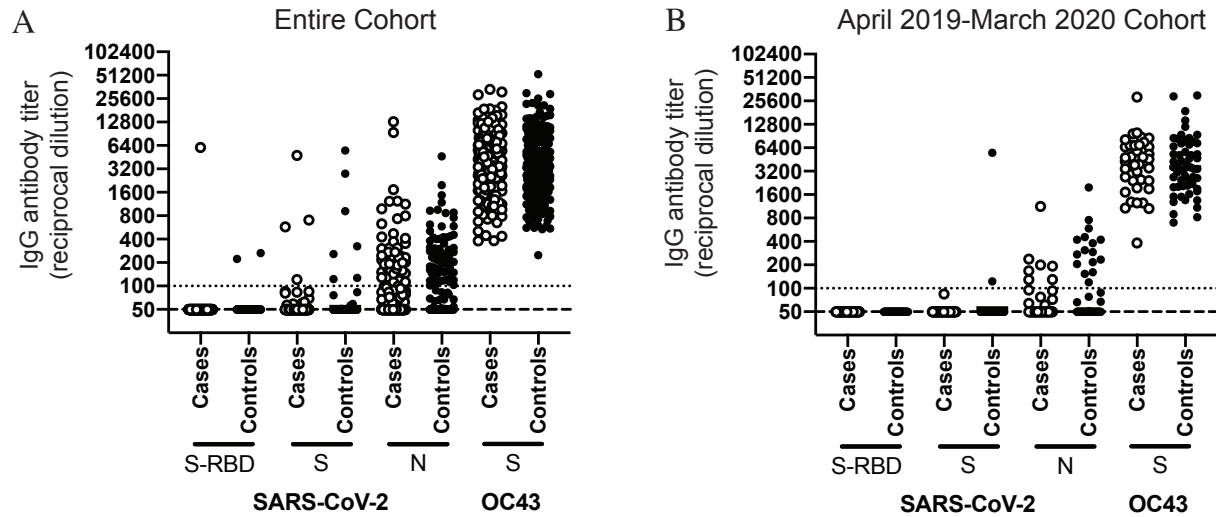


327

328 **Figure 1. Identification of pre-existing cross-reactive SARS-CoV-2 antibodies in human**  
329 **serum prior to the pandemic.** ELISAs were completed to quantify levels of serum antibodies  
330 binding to the SARS-CoV-2 full-length spike (S) protein (A), the receptor binding domain (S-  
331 RBD) of S (B), and the nucleocapsid (N) protein (C); dashed line denotes lower limit of  
332 detection (LOD=50), dotted line represents a threshold set 2-fold above LOD (>100). We tested  
333 samples collected from 204 individuals in the summer of 2017, prior to the global pandemic. We

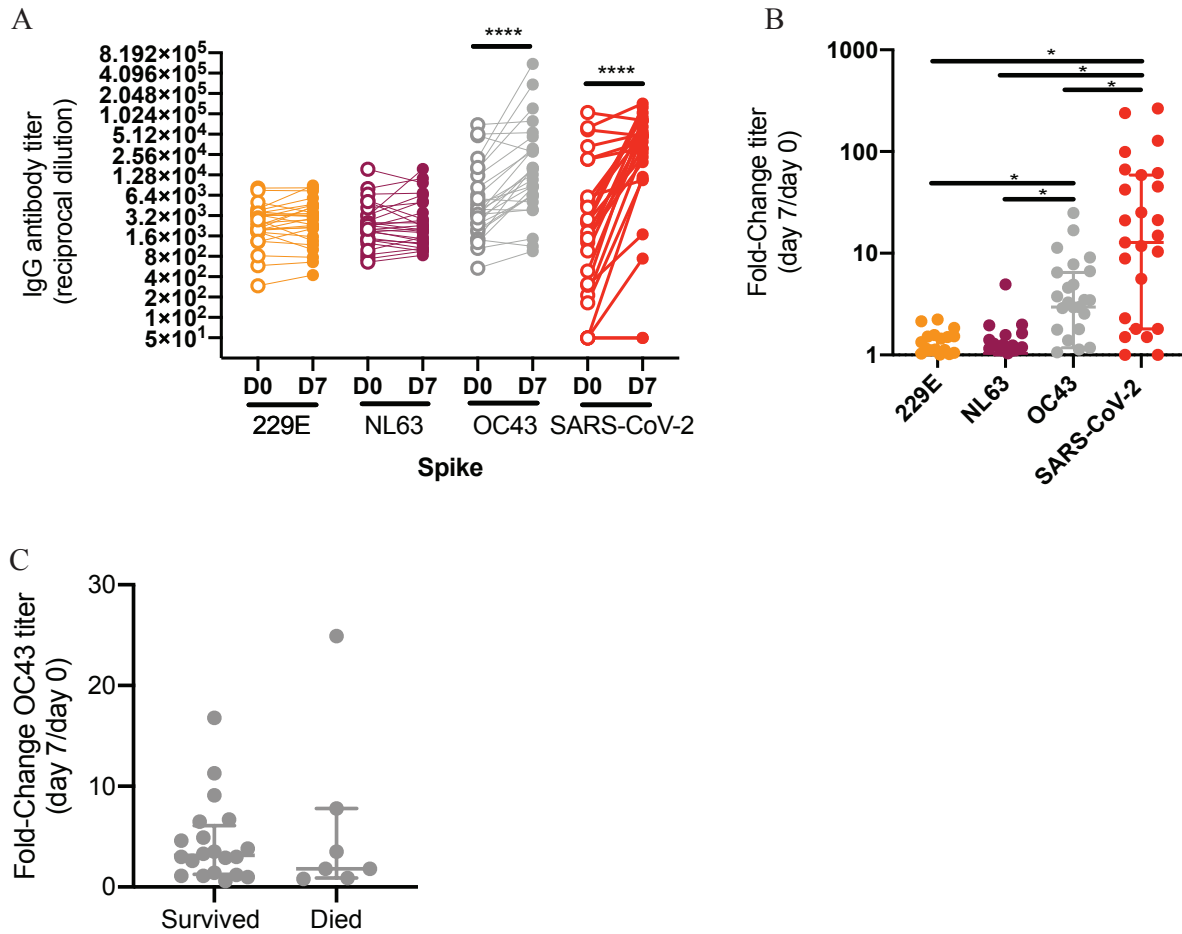


334 also tested samples collected from 15 individuals following confirmed SARS-CoV-2 infections.  
335 and recovered adults. **(D)** The relationship between antibody titers in donors with detectable IgG  
336 against the S-RBD and/or full length S is shown. **(E)** SARS-CoV-2 pseudotype neutralization  
337 assays were completed using pre-pandemic serum samples with (n=9) and without (n=22) cross  
338 reactive SARS-CoV-2 antibodies, as well as serum samples from individuals following  
339 confirmed SARS-CoV-2 infections (n=15); one-way ANOVA Tukey's multiple comparisons of  
340 log<sub>2</sub> transformed antibody titers \*\*\*\*p<0.0001; dotted line denotes lower LOD (=10). **(F-H)**  
341 ELISAs were completed to quantify levels of serum antibodies binding to the full length S  
342 proteins from 229E, NL63, and OC43 using pre-pandemic serum samples with (n=12) and  
343 without (n=51). Unpaired t-tests of log<sub>2</sub> transformed antibody titers \*\*\*\*p<0.0001 and  
344 \*\*p=0.0027. Horizontal lines indicate geometric mean and error bars represent standard  
345 deviation.



346  
347 **Figure 2. Pre-pandemic SARS-CoV-2 and OC43-reactive antibodies are not associated with**  
348 **protection from SARS-CoV-2 infection.** We quantified antibody levels in pre-pandemic serum  
349 serum samples collected from individuals who later became SARS-CoV-2 infected (cases; n=251) and  
350 those who did not become SARS-CoV-2 infected (controls; n=251). ELISAs were completed to  
351 quantify levels of antibodies reactive to SARS-CoV-2 proteins (S, S-RBD, and N) and the OC43  
352 S protein. Shown are data using samples collected from the entire cohort between August 2013  
353 and March 2020 (A) and samples from a smaller subset of individuals collected between April  
354 2019-Mach 2020 (B). Antibody titers between cases and controls were not significantly different  
355 as determined by unpaired t-tests of log<sub>2</sub> transformed antibody titers. Dashed line denotes lower  
356 limit of detection (LOD=50), dotted line represents a threshold set 2-fold above LOD (>100).

357



358

359

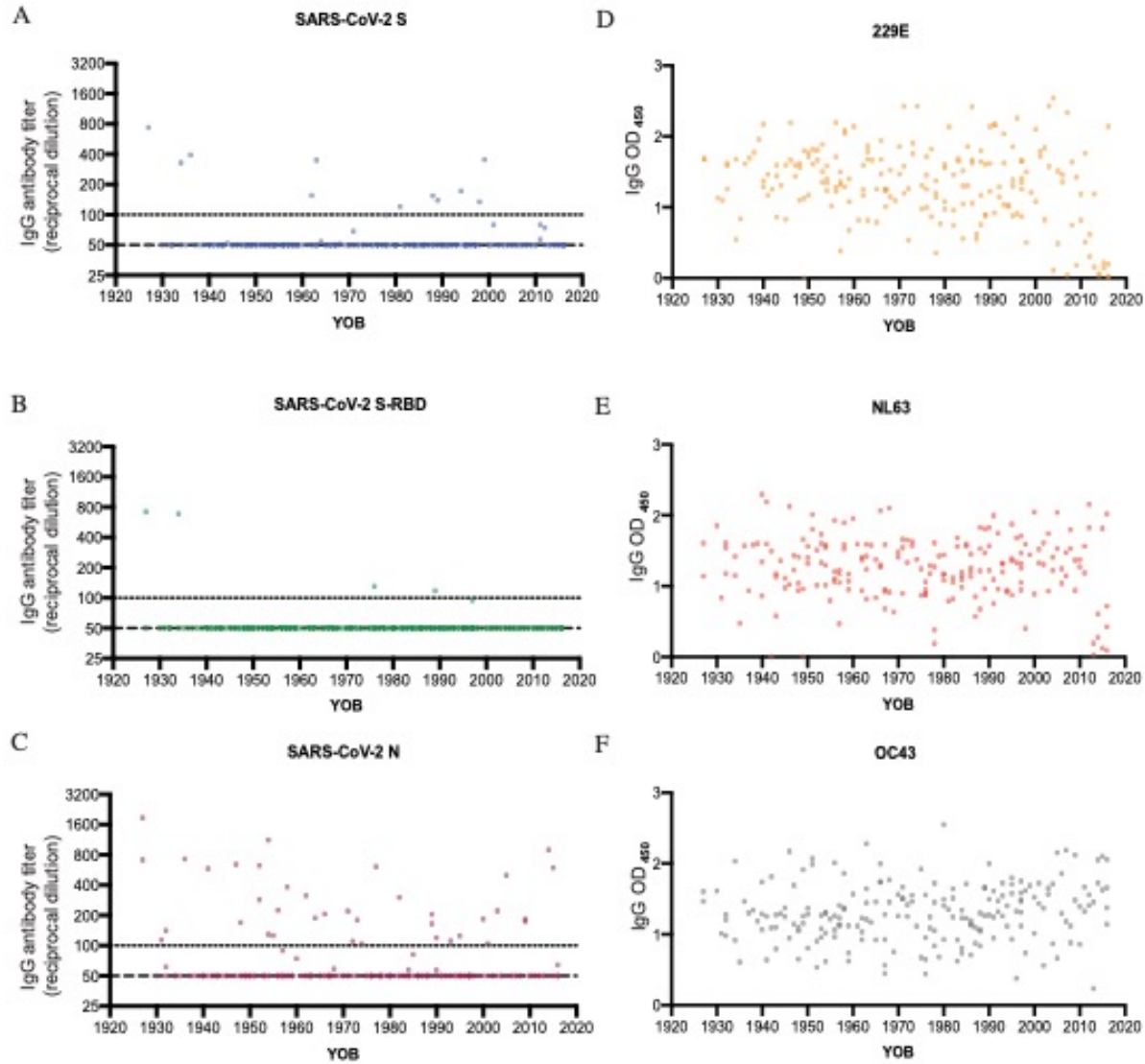
360 **Figure 3. SARS-CoV-2 infections boost antibodies that react to OC43 S protein.** We  
361 quantified antibody levels in serum collected from 27 individuals 0 and 7 days after  
362 hospitalization for COVID-19. ELISAs were completed to quantify levels of antibodies reactive  
363 to the S proteins of 229E, NL63, OC43 and SARS-CoV-2. (A) IgG titers and (B) titer fold  
364 change are shown. (C) Fold change in OC43 S-reactive antibodies was not associated with  
365 disease outcome. Paired t-test of log<sub>2</sub> transformed antibody titers, \*\*\*\*p<0.0001. One-way  
366 ANOVA Tukey's multiple comparisons fold-change in antibody titers, \*p<0.04. Horizontal lines  
367 indicate the mean and error bars show standard deviation.

368

369

370

371



372

373 **Figure S1. There are no obvious age-related differences in pre-pandemic SARS-CoV-2 and**  
374 **hCoV reactive antibodies.** ELISAs were completed to measure levels of serum antibodies  
375 binding to the SARS-CoV-2 full-length spike (S) protein (A), SARS-CoV-2 receptor binding  
376 domain (S-RBD) of S (B), SARS-CoV-2 nucleocapsid (N) protein (C), 229E S protein (D),  
377 NL63 S protein (E), and OC43 S protein (F). Serum samples collected from 204 individuals in  
378 the summer of 2017 were tested. Reciprocal titer from serially-diluted serum samples (A-C) and  
379 optical densities at 450nm wavelength (OD<sub>450</sub>) of 1:500 dilution of serum (D-F) are shown.  
380 Dashed line denotes lower limit of detection (LOD=50), dotted line represents a threshold set 2-  
381 fold above LOD (>100).

382

383

384

385

386

387

388 **Supplementary Tables**

389

390 **Table S1:** Comparison between antibody titers and COVID-19 phenotypes.

391

Phenotype Name	Antibody Titers	Beta	SE	P	Cases	Controls
SARS-CoV-2 Susceptibility	N titer	9E-05	1E-04	0.47	251	251
SARS-CoV-2 Susceptibility	Spike-FL Titer	-1E-04	3E-04	0.65	251	251
SARS-CoV-2 Susceptibility	Spike-RBD Titer	5E-04	9E-04	0.53	251	251
SARS-CoV-2 Susceptibility	OC43 Spike Titer	1E-06	2E-05	0.93	251	251
COVID-19 Hospitalization	N Titer	1E-04	1E-04	0.40	80	171
COVID-19 Hospitalization	Spike-FL Titer	-5E-04	1E-03	0.61	80	171
COVID-19 Hospitalization	Spike-RBD Titer	-2E-03	1E-01	0.99	80	171
COVID-19 Hospitalization	OC43 Spike Titer	1E-05	3E-05	0.62	80	171
COVID-19 Severe Hospitalization	N Titer	-5E-04	1E-03	0.70	24	171
COVID-19 Severe Hospitalization	Spike-FL Titer	-1E-04	8E-04	0.88	24	171
COVID-19 Severe Hospitalization	Spike-RBD Titer	-2E-03	2E-01	0.99	24	171
COVID-19 Severe Hospitalization	OC43 Spike Titer	2E-05	5E-05	0.74	24	171

392

393

394 **Table S2:** Phenotype definitions related to Table S1.

Phenotype Name	Case Definition	Control Definition	Case	Controls
SARS-CoV-2 Susceptibility	RT-PCR confirmed <i>positive</i> test for SARS-CoV2 infection	RT-PCR confirmed <i>negative</i> test for SARS-CoV2 infection	251	251
COVID-19 Hospitalization	RT-PCR confirmed positive test for SARS-CoV2 infection and <i>hospitalized</i> due to COVID-19	RT-PCR confirmed positive test for SARS-CoV2 infection and <i>not hospitalized</i> due to COVID-19	80	171
COVID-19 Severe Hospitalization	RT-PCR confirmed positive test for SARS-CoV2 infection and <i>required respiratory support or had ICU stay</i> due to COVID-19	RT-PCR confirmed positive test for SARS-CoV2 infection and <i>not hospitalized</i> due to COVID-19	24	171

395

396

## REFERENCES

- 1 Dijkman, R. *et al.* The dominance of human coronavirus OC43 and NL63 infections in infants. *J Clin Virol* **53**, 135-139, doi:10.1016/j.jcv.2011.11.011 (2012).
- 2 Friedman, N. *et al.* Human Coronavirus Infections in Israel: Epidemiology, Clinical Symptoms and Summer Seasonality of HCoV-HKU1. *Viruses* **10**, doi:10.3390/v10100515 (2018).
- 3 Gaunt, E. R., Hardie, A., Claas, E. C., Simmonds, P. & Templeton, K. E. Epidemiology and clinical presentations of the four human coronaviruses 229E, HKU1, NL63, and OC43 detected over 3 years using a novel multiplex real-time PCR method. *J Clin Microbiol* **48**, 2940-2947, doi:10.1128/JCM.00636-10 (2010).
- 4 Killerby, M. E. *et al.* Human coronavirus circulation in the United States 2014-2017. *J Clin Virol* **101**, 52-56, doi:10.1016/j.jcv.2018.01.019 (2018).
- 5 Edridge, A. W. D. *et al.* Seasonal coronavirus protective immunity is short-lasting. *Nat Med*, doi:10.1038/s41591-020-1083-1 (2020).
- 6 Pfefferle, S. *et al.* Distant relatives of severe acute respiratory syndrome coronavirus and close relatives of human coronavirus 229E in bats, Ghana. *Emerg Infect Dis* **15**, 1377-1384, doi:10.3201/eid1509.090224 (2009).
- 7 Pyrc, K. *et al.* Mosaic structure of human coronavirus NL63, one thousand years of evolution. *J Mol Biol* **364**, 964-973, doi:10.1016/j.jmb.2006.09.074 (2006).
- 8 Vijgen, L. *et al.* Evolutionary history of the closely related group 2 coronaviruses: porcine hemagglutinating encephalomyelitis virus, bovine coronavirus, and human coronavirus OC43. *J Virol* **80**, 7270-7274, doi:10.1128/JVI.02675-05 (2006).
- 9 Woo, P. C. *et al.* Characterization and complete genome sequence of a novel coronavirus, coronavirus HKU1, from patients with pneumonia. *J Virol* **79**, 884-895, doi:10.1128/JVI.79.2.884-895.2005 (2005).
- 10 Jaimes, J. A., Andre, N. M., Chappie, J. S., Millet, J. K. & Whittaker, G. R. Phylogenetic Analysis and Structural Modeling of SARS-CoV-2 Spike Protein Reveals an Evolutionary Distinct and Proteolytically Sensitive Activation Loop. *J Mol Biol* **432**, 3309-3325, doi:10.1016/j.jmb.2020.04.009 (2020).
- 11 Sagar, M. *et al.* Recent endemic coronavirus infection is associated with less severe COVID-19. *J Clin Invest*, doi:10.1172/JCI143380 (2020).
- 12 Gouma, S. *et al.* Middle-aged individuals may be in a perpetual state of H3N2 influenza virus susceptibility. *Nat Commun* **11**, 4566, doi:10.1038/s41467-020-18465-x (2020).
- 13 Nguyen-Contant, P. *et al.* S Protein-Reactive IgG and Memory B Cell Production after Human SARS-CoV-2 Infection Includes Broad Reactivity to the S2 Subunit. *mBio* **11**, doi:10.1128/mBio.01991-20 (2020).
- 14 Huang, A. T. *et al.* A systematic review of antibody mediated immunity to coronaviruses: kinetics, correlates of protection, and association with severity. *Nat Commun* **11**, 4704, doi:10.1038/s41467-020-18450-4 (2020).
- 15 Cobey, S. & Hensley, S. E. Immune history and influenza virus susceptibility. *Curr Opin Virol* **22**, 105-111, doi:10.1016/j.coviro.2016.12.004 (2017).
- 16 Mathew, D. *et al.* Deep immune profiling of COVID-19 patients reveals distinct immunotypes with therapeutic implications. *Science* **369**, doi:10.1126/science.abc8511 (2020).

- 17 Hoffmann, M. *et al.* SARS-CoV-2 Cell Entry Depends on ACE2 and TMPRSS2 and Is Blocked by a Clinically Proven Protease Inhibitor. *Cell* **181**, 271-280 e278, doi:10.1016/j.cell.2020.02.052 (2020).
- 18 Flannery, D. D. *et al.* SARS-CoV-2 seroprevalence among parturient women in Philadelphia. *Sci Immunol* **5**, doi:10.1126/sciimmunol.abd5709 (2020).
- 19 Amanat, F. *et al.* A serological assay to detect SARS-CoV-2 seroconversion in humans. *Nat Med*, doi:10.1038/s41591-020-0913-5 (2020).
- 20 Anderson, E. M. *et al.* SARS-CoV-2 antibody responses in children with MIS-C and mild and severe COVID-19. *medRxiv*, doi:10.1101/2020.08.17.20176552 (2020).
- 21 R Core Team. *R: A Language and Environment for Statistical Computing*, Vienna, Austria; 2016. Available from: <https://www.R-project.org/>