

1
2
3
4
5
6
7
8
9

Supplementary Materials for
Heterogeneity in transmissibility and shedding
SARS-CoV-2 via droplets and aerosols

Paul Z. Chen, Niklas Bobrovitz, Zahra Premji,
Marion Koopmans, David N. Fisman, Frank X. Gu.

10 **Materials and Methods**

11 Search strategy, selection criteria and data collection

12 We undertook a systematic review and prospectively submitted the protocol for registration
13 on PROSPERO (registration number, CRD42020204637). Other than the title of this study, we
14 have followed PRISMA reporting guidelines (39). The systematic review was conducted
15 according to Cochrane methods guidance (40).

16 The search included papers that (i) reported positive, quantitative measurements (copies/ml
17 or an equivalent metric) of SARS-CoV-2, SARS-CoV-1 or A(H1N1)pdm09 in human
18 respiratory specimens (ETA, NPA, NPS, OPS, POS and Spu) from COVID-19, SARS or
19 A(H1N1)pdm09 cases; (ii) reported data that could be extracted from the infectious periods of
20 SARS-CoV-2 (defined as -3 to +10 DFSO for symptomatic cases and 0 to +10 days from the day
21 of laboratory diagnosis for asymptomatic cases), SARS-CoV-1 (defined as 0 to +20 DFSO or the
22 equivalent asymptomatic period) or A(H1N1)pdm09 (defined as -2 to +9 DFSO for symptomatic
23 cases and 0 days to +9 days from the day of laboratory diagnosis for asymptomatic cases); and
24 (iii) reported data for two or more cases with laboratory-confirmed COVID-19, SARS or
25 A(H1N1)pdm09 based on World Health Organization (WHO) case definitions. Quantitative
26 specimen measurements were considered after RNA extraction for diagnostic sequences of
27 SARS-CoV-2 (*Ofr1b*, *N*, *RdRp* and *E* genes), SARS-CoV-1 (*Ofr1b*, *N* and *RdRp* genes) and
28 A(H1N1)pdm09 (*HA* and *M* genes).

29 Studies were excluded, in the following order, if they (i) studied an ineligible disease; (ii)
30 had an ineligible study design, including those that were reviews of evidence (e.g., scoping,
31 systematic or narrative), did not include primary clinical human data, reported data for less than
32 two cases due to an increased risk of selection bias, were incomplete (e.g., ongoing clinical

33 trials), did not report an RNA extraction step before measurement or were studies of
34 environmental samples; (iii) reported an ineligible metric for specimen concentration (e.g.,
35 qualitative RT-PCR or cycle threshold [Ct] values without calibration included in the study); (iv)
36 reported quantitative measurements from an ineligible specimen type (e.g., blood specimens,
37 pooled specimens or self-collected POS or Spu patient specimens in the absence of a healthcare
38 professional); (v) reported an ineligible sampling period (consisted entirely of data that could not
39 be extracted from within the infectious period); or (vi) were duplicates of an included study (e.g.,
40 preprinted version of a published paper or duplicates not identified by Covidence). We included
41 data from control groups receiving standard of care in interventional studies but excluded data
42 from the intervention group. Patients in the intervention group are, by definition, systematically
43 different from general case populations because they receive therapies not being widely used for
44 treatment, which may influence virus concentrations. Interventional studies examining the
45 comparative effectiveness of two or more treatments were excluded for the same reason. Studies
46 exclusively reporting semiquantitative measurements (e.g., Ct values) of specimen concentration
47 were excluded, as these measurements are sensitive to batch and instrument inconsistencies and,
48 without proper calibration, cannot be compared on an absolute scale across studies (36).

49 We searched, without the use of filters or language restrictions, the following sources:
50 MEDLINE (via Ovid, 1946 to 7 August 2020), EMBASE (via Ovid, 1974 to 7 August 2020,
51 Cochrane Central Register of Controlled Trials (via Ovid, 1991 to 7 August 2020), Web of
52 Science Core Collection (including: Science Citation Index Expanded, 1900 to 7 August 2020;
53 Social Sciences Citation Index, 1900 to 7 August 2020; Arts & Humanities Citation Index, 1975
54 to 7 August 2020; Conference Proceedings Citation Index - Science, 1990 to 7 August 2020;
55 Conference Proceedings Citation Index - Social Sciences & Humanities, 1990 to 7 August 2020;

56 and Emerging Sources Citation Index, 2015 to 7 August 2020), as well as medRxiv and bioRxiv
57 (both searched through Google Scholar via the Publish or Perish program, to 7 August 2020).
58 We also gathered studies by searching through the reference lists of review articles identified by
59 the database search, by searching through the reference lists of included articles, through expert
60 recommendation (by Epic J. Topol, Akiko Iwasaki and A. Marm Kilpatrick on Twitter) and by
61 hand-searching through journals (*Nature*, *Nat. Med.*, *Science*, *NEJM*, *Lancet*, *Lancet Infect. Dis.*,
62 *JAMA*, *JAMA Intern. Med.* and *BMJ*). A comprehensive search was developed by a librarian,
63 which included subject headings and keywords. The search strategy had 3 main concepts
64 (disease, specimen type and outcome), and each concept was combined using the appropriate
65 Boolean operators. The search was tested against a sample set of known articles that were pre-
66 identified. The line-by-line search strategies for all databases are included in Tables S1 to S5.
67 The search results were exported from each database and uploaded to the Covidence online
68 system for deduplication and screening.

69 Two authors independently screened titles and abstracts, reviewed full texts, collected data
70 and assessed risk of bias via Covidence and a hybrid critical appraisal checklist based on the
71 Joanna Briggs Institute (JBI) tools for case series, analytical cross-sectional studies and
72 prevalence studies (41-43). To evaluate the sample size in a study, we used the following
73 calculation:

74

$$75 \quad n^* = \frac{z^2 \sigma}{d^2}, \quad (1)$$

76

77 where n^* is the sample size threshold, z is the z-score for the level of confidence (95%), σ is the
78 standard deviation (assumed to be $3 \log_{10}$ copies/ml, one quarter of the full range of rVLS) and d

79 is the marginal error (assumed to be 1 log₁₀ copies/ml, based on the minimum detection limit for
80 qRT-PCR across studies) (44). The hybrid JBI critical appraisal checklist is shown in Table S10.
81 Studies were considered to have low risk of bias if they met the majority of the items, indicating
82 that the estimates were likely to be correct for the target population. Inconsistencies were
83 resolved by discussion and consensus.

84 The search found 28 studies for COVID-19 (21, 38, 45-70), 8 studies for SARS (71-78) and
85 27 studies for A(H1N1)pdm09 (79-105), and data were collected from each study. Descriptive
86 statistics on quantitative specimen measurements were collected from confirmed cases directly if
87 reported numerically or using WebPlotDigitizer 4.3 (<https://apps.automeris.io/wpd/>) if reported
88 graphically. Individual specimen measurements were collected directly if reported numerically
89 or, when the data were clearly represented, using the tool if reported graphically. We also
90 collected the relevant numbers of cases, types of cases, pharmacotherapies, volumes of transport
91 media, numbers of specimens and DFSO (for symptomatic cases) or day relative to initial
92 laboratory diagnosis (for asymptomatic cases) on which each specimen was taken. Hospitalized
93 cases were defined as those being tested in a hospital setting and then admitted. Non-admitted
94 cases were defined as those being tested in a hospital setting but not admitted. Community cases
95 were defined as those being tested in a community setting. Symptomatic, presymptomatic and
96 asymptomatic infections were defined as in the study. Based on rare description in contributing
97 studies, paucisymptomatic infections, when described, were included with symptomatic ones.
98 Pediatric cases were defined as those below 18 years of age or as defined in the study. Adult
99 cases were defined as those 18 years of age or higher or as defined in the study.

100

101 Calculation of rVLs from specimen measurements

102 In this study, viral concentrations in respiratory specimens were denoted as specimen
103 measurements, whereas viral concentrations in the respiratory tract were denoted as rVLs. To
104 determine rVLs, each collected quantitative specimen measurement was converted to rVL based
105 on the dilution factor. For example, measurements from swabbed specimens (NPS and OPS)
106 typically report the RNA concentration in viral transport media. Based on the expected uptake
107 volume for swabs (0.128 ± 0.031 ml, mean \pm SD) (106) or reported collection volume for
108 expelled fluid in the study (e.g., 0.5 to 1 ml) along with the reported volume of transport media
109 in the study (e.g., 1 ml), we calculated the dilution factor for each respiratory specimen to
110 estimate the rVL. If the diluent volume was not reported, then the dilution factor was calculated
111 assuming a volume of 1 ml (NPS and OPS), 2 ml (POS and ETA) or 3 ml (NPA) of transport
112 media (46, 48, 74). Unless dilution was reported for Spu specimens, we used the specimen
113 measurement as the rVL (21). The non-reporting of diluent volume was noted as an element
114 increasing risk of bias in the hybrid JBI critical appraisal checklist. Specimen measurements
115 (based on instrumentation, calibration, procedures and reagents) are not standardized. While the
116 above procedures (including only quantitative measurements after extraction as an inclusion
117 criterion, considering assay detection limits and correcting for specimen dilution) have
118 considered many of these factors, non-standardization remains an inherent limitation in the
119 variability of specimen measurements.

120

121 Meta-regression of k and heterogeneity in rVL

122 To assess the relationship between k and heterogeneity in rVL, we performed a univariate
123 meta-regression ($\log k = a(SD) + b$, where a is the slope for association and b is the intercept)
124 between pooled estimates of k (based on studies describing community transmission) for

125 COVID-19 ($k = 0.409$) (12-14, 107-110), SARS ($k = 0.165$) (15) and A(H1N1)pdm09 ($k =$
126 8.155) (16, 17) and the SD of the rVLs in contributing studies. Since the negative binomial
127 distribution, from which k is derived (15), is analogous to a compound Poisson distribution in
128 which each random variable is $\text{Log}(k)$ -distributed, the meta-regression was performed with
129 $\log k$. Since SD was the metric, we used a fixed-effects model. This analysis assumes that the SD
130 of rVLs in each study estimates SD of rVL for the disease. Thus, for weighting in the meta-
131 regression, we used the proportion of rVL samples from each study relative to the entire
132 systematic dataset ($W_i = n_i/n_{\text{total}}$). All calculations were performed in units of \log_{10} copies/ml.
133 As the meta-regression used pooled estimates of k for each infection, it assumed that there was
134 no correlated bias to k across contributing studies. The limit of detection for qRT-PCR
135 instruments used in the included studies did not significantly affect the analysis of heterogeneity
136 in rVL, as these limits tended to be below the values found for specimens with low virus
137 concentrations. The meta-regression was conducted using all contributing studies and showed a
138 weak association (Pearson's $r = -0.27$). Meta-regression was also conducted using studies that
139 had low risk of bias according to the hybrid JBI critical appraisal checklist and showed a strong
140 association (Pearson's $r = -0.73$). The regression line, its 95% CI and its Pearson correlation
141 coefficient (Pearson's r) were presented along with the P -value for association (meta-regression
142 slope t -test for a) and the effect estimate (a) between the two variables.

143

144 Meta-analysis of rVLs

145 Based on the search design and composition of contributing studies, the meta-analysis
146 overall estimates were the expected SARS-CoV-2, SARS-CoV-1 and A(H1N1)pdm09 rVL when
147 encountering a COVID-19, SARS or A(H1N1)pdm09 case, respectively, during their infectious

148 period. Pooled estimates and 95% CIs for the expected rVL of each virus across their infectious
149 period were calculated using a random-effects meta-analysis (DerSimonian and Laird method).
150 The estimates for rVL assumed that each viral copy was extracted and quantified from the tested
151 specimen aliquot. For studies reporting summary statistics in medians and interquartile or total
152 ranges, we derived estimates of the mean and variance and calculated the 95% CIs (111). All
153 calculations were performed in units of \log_{10} copies/ml. Between-study heterogeneity in meta-
154 analysis was assessed using Cochran's Q test and the I^2 and τ^2 statistics. If significant between-
155 study heterogeneity in meta-analyses was encountered, sensitivity analysis based on the risk of
156 bias of contributing studies was performed. The meta-analyses were conducted using STATA
157 14.2 (StataCorp LLC, College Station, Texas, USA).

158

159 Age and symptomatology subgroup analyses of SARS-CoV-2 rVLs

160 Subgroup analyses were conducted to compare the expected rVLs of SARS-CoV-2 in adult,
161 pediatric, symptomatic and asymptomatic COVID-19 cases, as previously defined, during the
162 infectious period. The overall estimate for each subgroup was the expected rVL when
163 encountering a case of that subgroup during the infectious period. Studies reporting data
164 exclusively from a subgroup of interest were directly included in the analysis after rVL
165 estimations. For studies in which data for these subgroups constituted only part of its dataset,
166 rVLs from the subgroup were extracted to calculate the mean, variance and 95% CIs. All
167 calculations were performed in units of \log_{10} copies/ml. In each analysis, we excluded studies
168 with only a single case in the subgroup of interest. Pooled estimates and 95% CIs for each
169 subgroup were calculated using a random-effects meta-analysis (DerSimonian and Laird
170 method). Between-study heterogeneity was assessed using Cochran's Q test and the I^2 and τ^2

171 statistics. If significant between-study heterogeneity in meta-analyses was encountered,
172 sensitivity analysis based on the risk of bias of contributing studies was performed. For meta-
173 analyses of pediatric and asymptomatic COVID-19 cases, contributing studies had low risk of
174 bias, and no risk-of-bias sensitivity analyses were performed for these subgroups. The meta-
175 analyses were conducted using STATA 14.2 (StataCorp LLC, College Station, Texas, USA).

176

177 Distributions of rVL

178 To analyze heterogeneity in rVLs, we pooled the entirety of individual sample data
179 (individual sample data were rVLs that were estimated from individual specimen measurements
180 reported as in the contributing studies rather than as descriptive statistics) in the systematic
181 dataset by disease, COVID-19 subgroups and DFSO. For analyses of SARS-CoV-2 dynamics
182 across disease course, we included estimated rVLs from negative qRT-PCR measurements of
183 respiratory specimens ($N = 4, 3, 7, 10, 13, 16, 14, 22$ and 16 negative specimens for $2, 3, 4, 5, 6,$
184 $7, 8, 9$ and 10 DFSO, respectively) for cases that had previously been quantitatively confirmed to
185 have COVID-19. These rVLs were estimated based on the reported assay detection limit in the
186 respective study. Probability plots and modified Kolmogorov–Smirnov tests were used to
187 determine the suitability of normal, lognormal, gamma and Weibull distributions to describe the
188 distribution of rVLs for SARS-CoV-2, SARS-CoV-1 and A(H1N1)pdm09. For each virus, the
189 data best conformed to Weibull distributions, which is described by the probability density
190 function

191

$$192 \quad f(v) = \frac{\alpha}{\beta} \left(\frac{v}{\beta}\right)^{\alpha-1} e^{-(v/\beta)^\alpha}, \quad (2)$$

193

194 where α is the shape factor, β is the scale factor and v is rVL ($v \geq 0 \log_{10}$ copies/ml). Weibull
195 distributions were fitted on the entirety of collected individual sample data for the respective
196 category. These fitted parameters and summary statistics were presented in Table S7. Since
197 individual specimen measurements could not be collected from all studies, there was a small bias
198 on the mean estimate for each fitted distribution. Thus, for the curves shown in Fig. 4, B and C,
199 the mean of the Weibull distributions summarized in Table S7 was adjusted to be the subgroup
200 meta-analysis estimate for correction; the SD and distribution around that mean remained
201 consistent.

202 For each Weibull distribution, the value of the rVL at the x^{th} percentile was determined
203 using the quantile function,

204

$$205 \quad v_x = \beta[-\ln(1 - x)]^{1/\alpha}. \quad (3)$$

206

207 For cp curves, we used eq. (3) to determine rVLs from the 1st cp to the 99th cp (step size, 1%).
208 Curve fitting to eq. (2) and calculation of eq. (3) and its 95% CI was performed using the
209 Distribution Fitter application in Matlab R2019b (MathWorks, Inc., Natick, Massachusetts,
210 USA).

211

212 Viral kinetics

213 To model SARS-CoV-2 kinetics during respiratory infection, we used a mechanistic
214 epithelial cell-limited model for the respiratory tract (112), based on the system of differential
215 equations:

216

217
$$\frac{dT}{dt} = -\beta TV \quad (4)$$

218
$$\frac{dI}{dt} = \beta TV - \delta I \quad (5)$$

219
$$\frac{dV}{dt} = pI - cV, \quad (6)$$

220

221 where T is the number of uninfected target cells, I is the number of productively infected cells, V
 222 is the rVL, β is the infection rate constant, p is the rate at which airway epithelial cells shed virus
 223 to the extracellular fluid, c is the clearance rate of virus and δ is the clearance rate of
 224 productively infected cells. Parameter units are summarized in Table S8. Using these parameters,
 225 the viral half-life in the respiratory tract ($t_{1/2} = \ln 2/c$) and the half-life of productively infected
 226 cells ($t_{1/2} = \ln 2/\delta$) could be estimated. Moreover, the cellular basic reproductive number (the
 227 expected number of secondary infected cells from a single productively infected cell placed in a
 228 population of susceptible cells) was calculated by

229

230
$$R_{0,c} = \frac{p\beta T_0}{c\delta}, \quad (7)$$

231

232 where T_0 is the initial number of susceptible cells (112).

233 For initial parameterization, eqs. (4)-(6) were simplified according to a quasi-steady state
 234 approximation (113) to

235

236
$$\frac{dT}{dt} = -\beta TV \quad (8)$$

237
$$\frac{dV}{dt} = rTV - \delta V, \tag{9}$$

238

239 where $r = p\beta/c$, for a form with greater numerical stability. The system of differential equations
240 was fitted on the mean estimates of SARS-CoV-2 rVL between -2 and 10 DFSO using the
241 entirety of individual sample data in units of copies/ml. Numerical analysis was implemented
242 using the Fit ODE app in OriginPro 2019b (OriginLab Corporation, Northampton,
243 Massachusetts, USA) via the Runge-Kutta method and initial parameters V_0 , I_0 and T_0 of 4
244 copies/ml, 0 cells and 5×10^7 cells, respectively, for the range -5 to 10 DFSO. The analysis was
245 first performed with eqs. (8)-(9). These output parameters were then used to initialize final
246 analysis using eqs. (4)-(6), where the estimates for β and δ were input as fixed and variable
247 parameters, respectively. The fitted line and its coefficient of determination (r^2) were presented.

248 To estimate the average incubation period, we extrapolated the kinetic model to 0 log₁₀
249 copies/ml pre-symptom onset. To estimate the average duration of shedding, we extrapolated the
250 model to 0 log₁₀ copies/ml post-symptom onset. Unlike in experimental studies, this estimate for
251 duration of shedding was not defined by assay detection limits. To estimate the average DFSO
252 on which SARS-CoV-2 concentration reached diagnostic levels, we extrapolated the model pre-
253 symptom onset to the equivalent of 1 and 3 log₁₀ copies/ml (chosen as example assay detection
254 limits) in specimen concentration for NPSs immersed in 1 ml of transport media, as described by
255 the dilution factor estimation above. The average time from respiratory infection to reach
256 diagnostic levels was then calculated by subtracting these values from the estimated average
257 incubation period. Notably, the extrapolated time for SARS-CoV-2 to reach diagnostic
258 concentrations in the respiratory tract should be validated in tracing studies, in which contacts
259 are prospectively subjected to daily sampling.

260

261 Likelihood of respiratory particles containing virions

262 To calculate an unbiased estimator for viral partitioning (the expected number of viable
263 copies in an expelled particle at a given size), we multiplied rVLs with the volume equation for
264 spherical particles during atomization and the estimated viability proportion, according to the
265 following equation:

266

267
$$\lambda = \frac{\pi\rho v_p \gamma v}{6} d^3, \quad (10)$$

268

269 where λ is the expectation value, ρ is the material density of the respiratory particle (997 g/m³),
270 v_p is the volumetric conversion factor (1 ml/g), γ is the viability proportion, v is the rVL and d is
271 the hydrated diameter of the particle during atomization.

272 The model assumed γ was 0.1% as a population-level estimate. For influenza,
273 approximately 0.1% of copies in particles expelled from the respiratory tract represent viable
274 virus (114), which is equivalent to one in 3 log₁₀ copies/ml for rVL or, after dilution in transport
275 media, roughly one in 4 log₁₀ copies/ml for specimen concentration. Respiratory specimens taken
276 from influenza cases show positive cultures for specimen concentrations down to 4 log₁₀
277 copies/ml (115). Likewise, for COVID-19 cases, recent reports also show culture-positive
278 respiratory specimens with SARS-CoV-2 concentrations down to 4 log₁₀ copies/ml (21),
279 including from pediatric (66) and asymptomatic (22) cases. Our analyses indicated that SARS-
280 CoV-2 rVLs were not different at different sites in the respiratory tract. Moreover, replication-
281 competent SARS-CoV-2 has been found in respiratory specimens taken throughout the
282 respiratory tract (mouth, nasopharynx, oropharynx and lower respiratory tract) (21, 58, 116).

283 Taken together, these considerations suggested that the assumption for viability proportion
 284 (0.1%) was suitable to model the likelihood of respiratory particles containing viable SARS-
 285 CoV-2. In accordance with the discussion above, the model did not differentiate this population-
 286 level viability estimate based on age, symptomatology or sites of atomization. Based on the
 287 relative relationship between the residence time of expelled particles before assessment (~5 s) in
 288 the referenced study (114), we took the viability proportion (0.1%) to be for equilibrated
 289 particles.

290 Likelihood profiles were determined using Poisson statistics, as described by the probability
 291 mass function

292

$$293 \quad P(X = k) = \frac{\lambda^k e^{-\lambda}}{k!}, \quad (11)$$

294

295 where k is the number of virions partitioned within the particle. For λ , 95% CIs were determined
 296 using the variance of its rVL estimate. To determine 95% CIs for likelihood profiles from the
 297 probability mass function, we used the delta method, which specifies

298

$$299 \quad \text{Var}(g(\boldsymbol{\theta})) \approx \sigma^2 \dot{g}(\boldsymbol{\theta})' \mathbf{D} \dot{g}(\boldsymbol{\theta}), \quad (12)$$

300

301 where $\sigma^2 \mathbf{D}$ is the covariance matrix of $\boldsymbol{\theta}$ and $\dot{g}(\boldsymbol{\theta})$ is the gradient of $g(\boldsymbol{\theta})$. For the univariate
 302 Poisson distribution, $\sigma^2 \mathbf{D} = \lambda$ and

303

$$304 \quad \dot{g}(\theta) = \frac{\lambda^{k-1} e^{-\lambda}}{k!} (k - \lambda). \quad (13)$$

305

306 Rate profiles of particles expelled by respiratory activities

307 Distributions from the literature were used to determine the rate profiles of particles
308 expelled during respiratory activities. For breathing, talking and coughing, we used data from
309 Johnson et al (117). For singing, we used data from Morawaska et al (118) for smaller aerosols
310 ($d_a < 20 \mu\text{m}$) and assumed that larger aerosols and droplets were consistent with talking based on
311 the oral cavity mechanism from Johnson et al (117). Rate profiles (particles/min or
312 particles/cough) were calculated based on the corrected normalized concentration ($dC_n/d\log D_p$,
313 in units of particles/cm³) at each discrete particle size, normalization (32 size channels per
314 decade) for the aerodynamic particle sizer used, unit conversion (cm³ to L) and the sample flow
315 rate (1 L/min). For coughing, the calculation assumed that participants coughed 10 times in the
316 30 s sampling interval. To determine the corrected normalized concentrations for breathing, we
317 used two corrections: a particle dilution factor of 4 and evaporation diameter factor of 0.5 (117).
318 Breathing was taken to expel negligible quantities of larger respiratory particles based on the
319 bronchiolar fluid film burst mechanism (117). To account for intermittent breathing while talking
320 and singing, the rate profiles for these activities included the contribution of aerosols expelled by
321 breathing. We compared these rate profiles with those collected from talking loudly and talking
322 quietly from Asadi et al (119). After dehydration, the particle diameter becomes approximately
323 0.5 times the initial size from when atomized in the respiratory tract (117), and we multiplied the
324 diameter of hydrated particles during atomization by a factor of 0.5 to calculate the dehydrated
325 diameter. Equilibrium aerodynamic diameter was calculated by $d_a = d_p(\rho/\rho_0)^{1/2}$, where d_p is
326 the dehydrated diameter, ρ is the material density of the respiratory particle (taken to be 1 g/cm³
327 based on the composition of dehydrated respiratory particles) and ρ_0 is the reference material

328 density (1 g/cm^3). Curves based on discrete particle measurements were connected using the
329 nonparametric Akima spline function.

330

331 Shedding virions via respiratory droplets and aerosols

332 To model the respiratory shedding rate across particle size, rVL estimates and the hydrated
333 diameters of particles expelled by a respiratory activity were input into eq. (10), and the output
334 was then multiplied by the rate profile of the activity (talking, singing, breathing or coughing).

335 To assess the relative contribution of aerosols and droplets to mediating respiratory viral
336 shedding for a given respiratory activity, we calculated the proportion of the cumulative hydrated
337 volumetric rate contributed by buoyant aerosols ($d_a \leq 10 \mu\text{m}$), long-range aerosols ($10 \mu\text{m} < d_a \leq$
338 $50 \mu\text{m}$), short-range aerosols ($50 \mu\text{m} < d_a \leq 100 \mu\text{m}$) and droplets ($d_a > 10 \mu\text{m}$) for that
339 respiratory activity. Since the Poisson mean was proportional to cumulative volumetric rate, this
340 estimate of the relative contribution of aerosols and droplets to respiratory viral shedding was
341 consistent among viruses and cps in the model.

342 To determine the total respiratory shedding rate for a given respiratory activity across cp,
343 we determined the cumulative hydrated volumetric rate (by summing the hydrated volumetric
344 rates across particle sizes for that respiratory activity) of particle atomization and input it into eq.
345 (10). Using rVLs and their variances as determined by the Weibull quantile functions, we then
346 calculated the Poisson means and their 95% CIs at the different cps.

347 To assess the influence of heterogeneity in rVL on individual infectiousness, we first
348 considered transmission of A(H1N1)pdm09 via aerosols (19). The 50% human infectious dose
349 (HID₅₀) of aerosolized A(H1N1)pdm09 was taken to be 1-3 virions (26). To determine the
350 expected time required for a A(H1N1)pdm09 case to shed 1 virion via aerosols, we took the

351 reciprocal of the Poisson means and their 95% CIs at the different cps of the estimated shedding
352 rates. The expected time required for a COVID-19 case to shed 1 virion via aerosols or 1 virion
353 via droplets or aerosols was determined in a same manner.

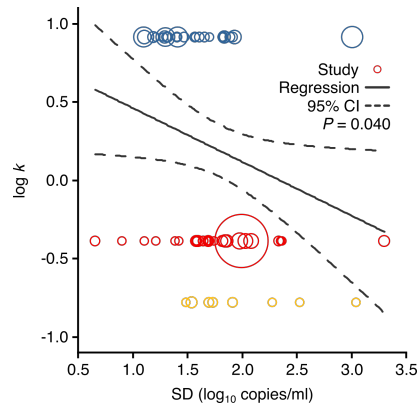
354

355 Statistical analysis

356 For data collection, statistical analysis, coding and data visualization, we used Excel v16.40
357 (Microsoft Corporation, Redmond, Washington, USA), OriginPro 2019b (OriginLab Corp.,
358 Northampton, Massachusetts, USA), STATA 14.2 (StataCorp LLC, College Station, Texas,
359 USA) and Matlab R2019b (MathWorks, Inc., Natick, Massachusetts, USA). The association
360 between k and rVL was assessed via meta-regression, and the P -value for association was based
361 on the meta-regression slope t -test. Between-study heterogeneity in the random-effects meta-
362 analyses (DerSimonian and Laird method) was assessed using Cochran's Q test and the I^2 and τ^2
363 statistics ($I^2 < 30\%$ was taken to indicate low between-study heterogeneity). If significant
364 heterogeneity in the meta-analyses was encountered, sensitivity analysis was performed based on
365 the risk of bias of contributing studies. Since case variance or sample size may be unequal
366 among the viral infections or subgroups, the one-sided Welch's t -test was used to compare the
367 difference of expected rVLs in the meta-analyses, subgroup analyses and sensitivity analyses.
368 Probability plots for normal, lognormal, gamma and Weibull distributions of rVLs were scored
369 based on the Blom method. Modified Kolmogorov-Smirnov tests were used to determine the
370 goodness of fits between rVLs (in \log_{10} copies/ml) and normal, lognormal, gamma or Weibull
371 distributions. By accepting the null hypothesis in the modified Kolmogorov-Smirnov test, the
372 given distribution cannot be rejected to fit the data. Based on fitted Weibull distribution
373 parameters, the Weibull quantile function was used to determine the rVL and its 95% CIs at a

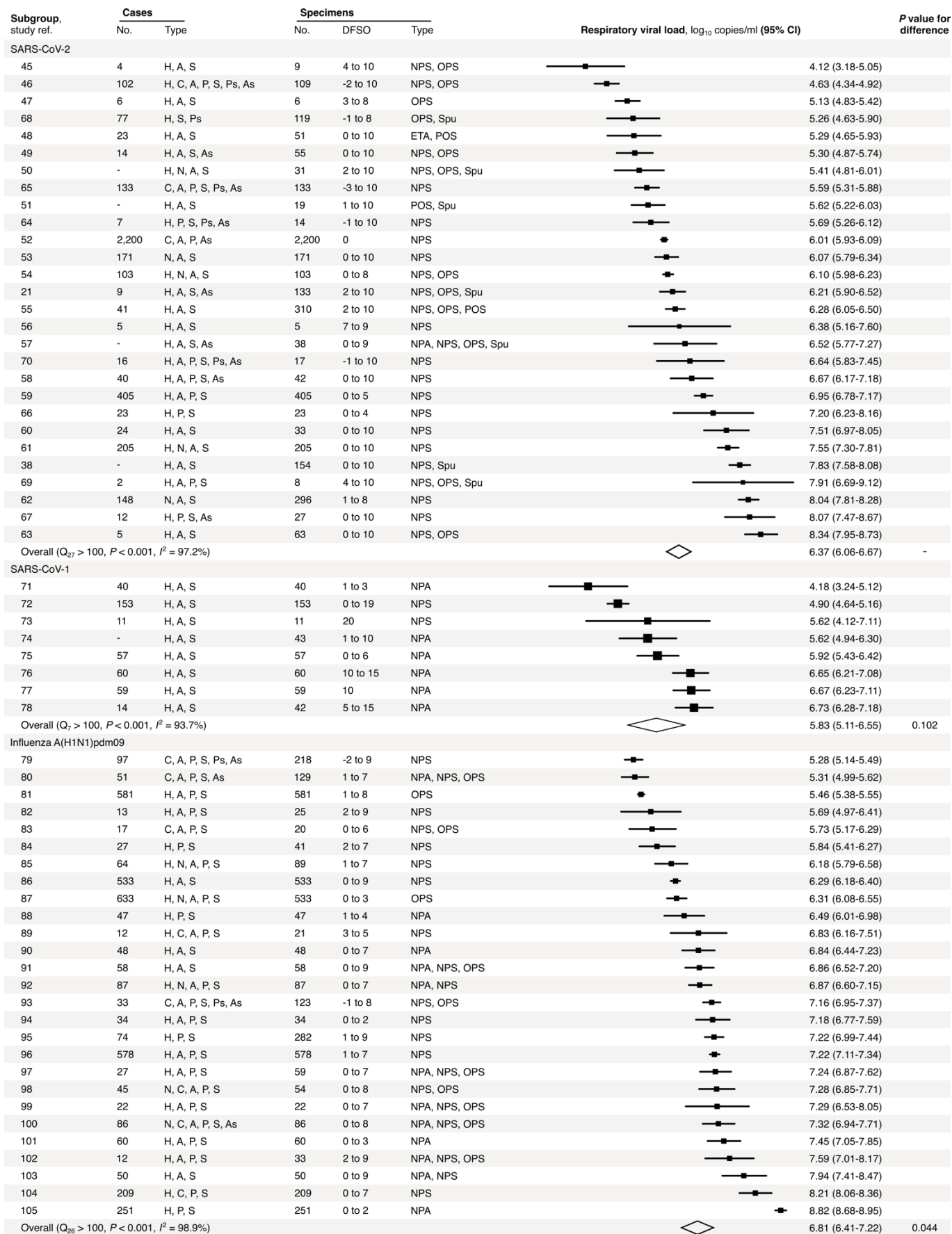
374 given cp. Likelihood profiles were determined using the Poisson probability mass function and
375 the unbiased estimator for the expected partitioning of virions at a given particle size. Variance
376 on likelihood estimates was determined via the delta method. For all statistical analyses, the
377 significance level (α) was taken to be 0.05.

378 **Supplementary Figures**

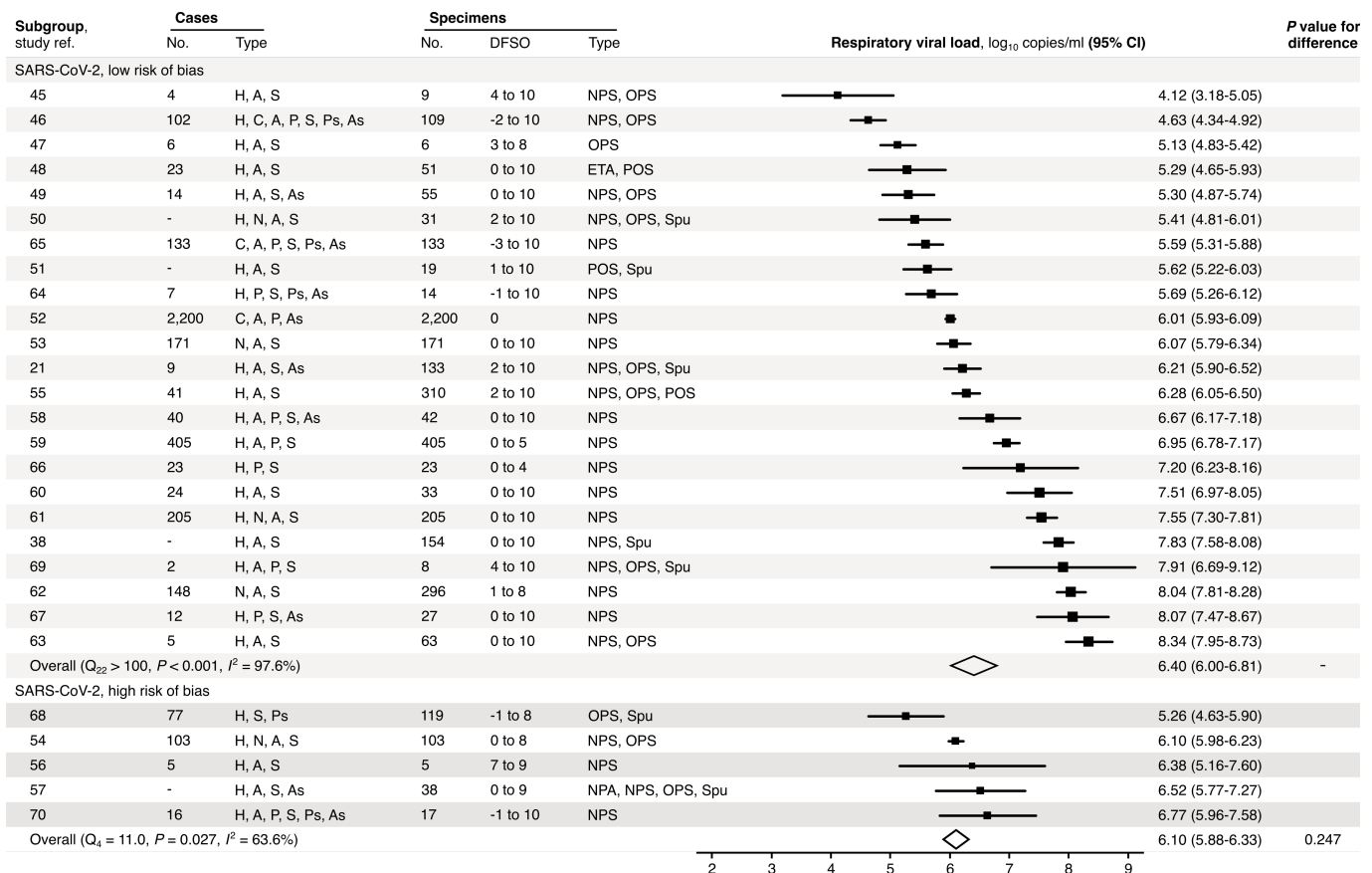


379

380 **Fig. S1. Meta-regression between dispersion in SARS-CoV-2, SARS-CoV-1 and**
381 **A(H1N1)pdm09 transmissibility and heterogeneity in rVL.** Meta-regression of dispersion
382 parameter (k) with the standard deviation (SD) of respiratory viral loads (rVLs) from all
383 contributing studies (Pearson's $r = -0.26$). Pooled estimates of k were determined from the
384 literature. Blue, red and yellow circles denote A(H1N1)pdm09 ($N = 27$), COVID-19 ($N = 28$)
385 and SARS ($N = 8$) studies, respectively. Circle sizes denote weighting in the meta-regression.
386 The P -value was obtained using the meta-regression slope t -test.



388 **Fig. S2. Meta-analysis of rVLs of SARS-CoV-2, SARS-CoV-1 and influenza**
389 **A(H1N1)pdm09 during the infectious period.** Random-effects meta-analyses comparing the
390 expected respiratory viral loads (rVLs) for COVID-19, SARS and A(H1N1)pdm09 cases during
391 the infectious period. Quantitative specimen measurements were used to estimate rVLs, which
392 refer to virus concentrations in the respiratory tract. Case types: hospitalized (H), not admitted
393 (N), community (C), adult (A), pediatric (P), symptomatic (S), presymptomatic (Ps) and
394 asymptomatic (As). Specimen types: endotracheal aspirate (ETA), nasopharyngeal aspirate
395 (NPA), nasopharyngeal swab (NPS), oropharyngeal swab (OPS), posterior oropharyngeal saliva
396 (POS) and sputum (Spu). Dashes denote case numbers that were not obtained. Box sizes denote
397 weighting in the overall estimates. Between-study heterogeneity was assessed using the P -value
398 from Cochran's Q test and the I^2 statistic. One-sided Welch's t -tests compared the expected
399 SARS-CoV-2 rVL with those of SARS-CoV-1 and A(H1N1)pdm09 (non-significance, $P >$
400 0.05).



401

402 **Fig. S3. Risk-of-bias sensitivity analysis of between-study heterogeneity for SARS-CoV-2**

403 **rVL during the infectious period.** Random-effects meta-analyses, based on the risk of bias of

404 contributing studies, of the expected respiratory viral loads (rVLs) of COVID-19 cases during

405 the infectious period. Quantitative rVLs refer to virus concentrations in the respiratory tract.

406 Case types: hospitalized (H), not admitted (N), community (C), adult (A), pediatric (P),

407 symptomatic (S), presymptomatic (Ps) and asymptomatic (As). Specimen types: endotracheal

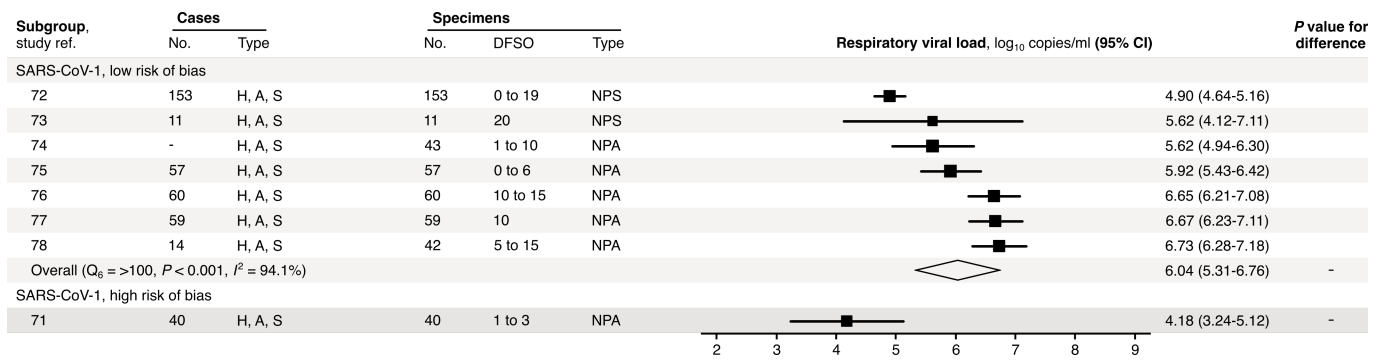
408 aspirate (ETA), nasopharyngeal aspirate (NPA), nasopharyngeal swab (NPS), oropharyngeal

409 swab (OPS), posterior oropharyngeal saliva (POS) and sputum (Spu). Dashes denote case

410 numbers that were not obtained. Box sizes denote weighting in the overall estimates. One-sided

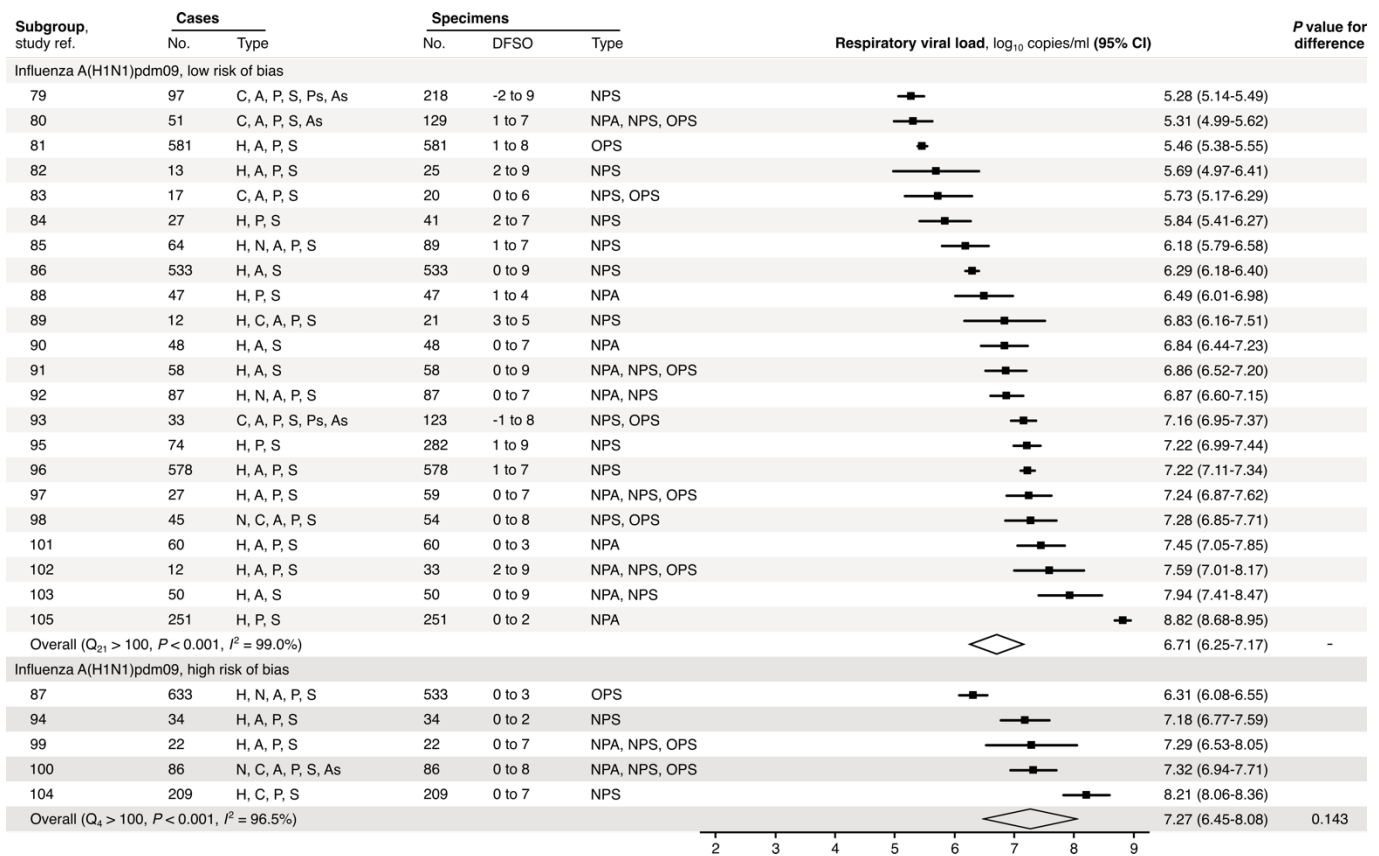
411 Welch's *t*-test for difference (non-significance, $P > 0.05$). Between-study heterogeneity was

412 assessed using the P -value from Cochran's Q test (non-significance, $P > 0.05$) and the I^2 statistic
413 ($I^2 < 30\%$ indicates low between-study heterogeneity).



414

415 **Fig. S4. Risk-of-bias sensitivity analysis of between-study heterogeneity for SARS-CoV-1**
 416 **rVL during the infectious period.** Random-effects meta-analyses, based on the risk of bias of
 417 contributing studies, of the expected respiratory viral loads (rVLs) of SARS cases during the
 418 infectious period. Quantitative rVLs refer to virus concentrations in the respiratory tract. Case
 419 types: hospitalized (H), adult (A) and symptomatic (S). Specimen types: nasopharyngeal aspirate
 420 (NPA) and nasopharyngeal swab (NPS). Dashes denote case numbers that were not obtained.
 421 Box sizes denote weighting in the overall estimates. One-sided Welch's *t*-test for difference,
 422 non-significance ($P > 0.05$). Between-study heterogeneity was assessed using the *P*-value from
 423 Cochran's *Q* test (non-significance, $P > 0.05$) and the *I*² statistic ($I^2 < 30\%$ indicates low
 424 between-study heterogeneity).



425

426 **Fig. S5. Risk-of-bias sensitivity analysis of between-study heterogeneity for A(H1N1)pdm09**

427 **rVL during the infectious period.** Random-effects meta-analyses, based on the risk of bias of

428 contributing studies, of the expected respiratory viral loads (rVLs) of A(H1N1)pdm09 cases

429 during the infectious period. Quantitative rVLs refer to virus concentrations in the respiratory

430 tract. Case types: hospitalized (H), not admitted (N), community (C), adult (A), pediatric (P),

431 symptomatic (S), presymptomatic (Ps) and asymptomatic (As). Specimen types: nasopharyngeal

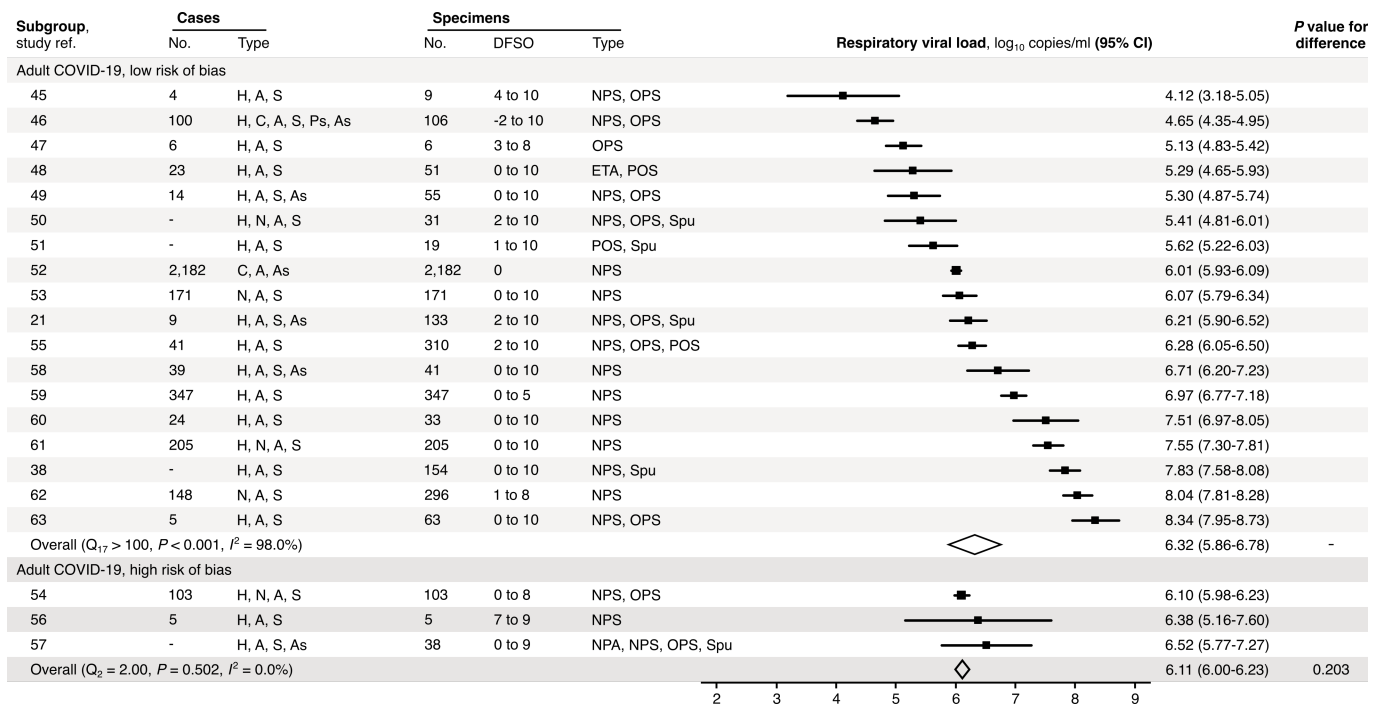
432 aspirate (NPA), nasopharyngeal swab (NPS) and oropharyngeal swab (OPS). Dashes denote case

433 numbers that were not obtained. Box sizes denote weighting in the overall estimates. One-sided

434 Welch's *t*-test for difference (non-significance, $P > 0.05$). Between-study heterogeneity was

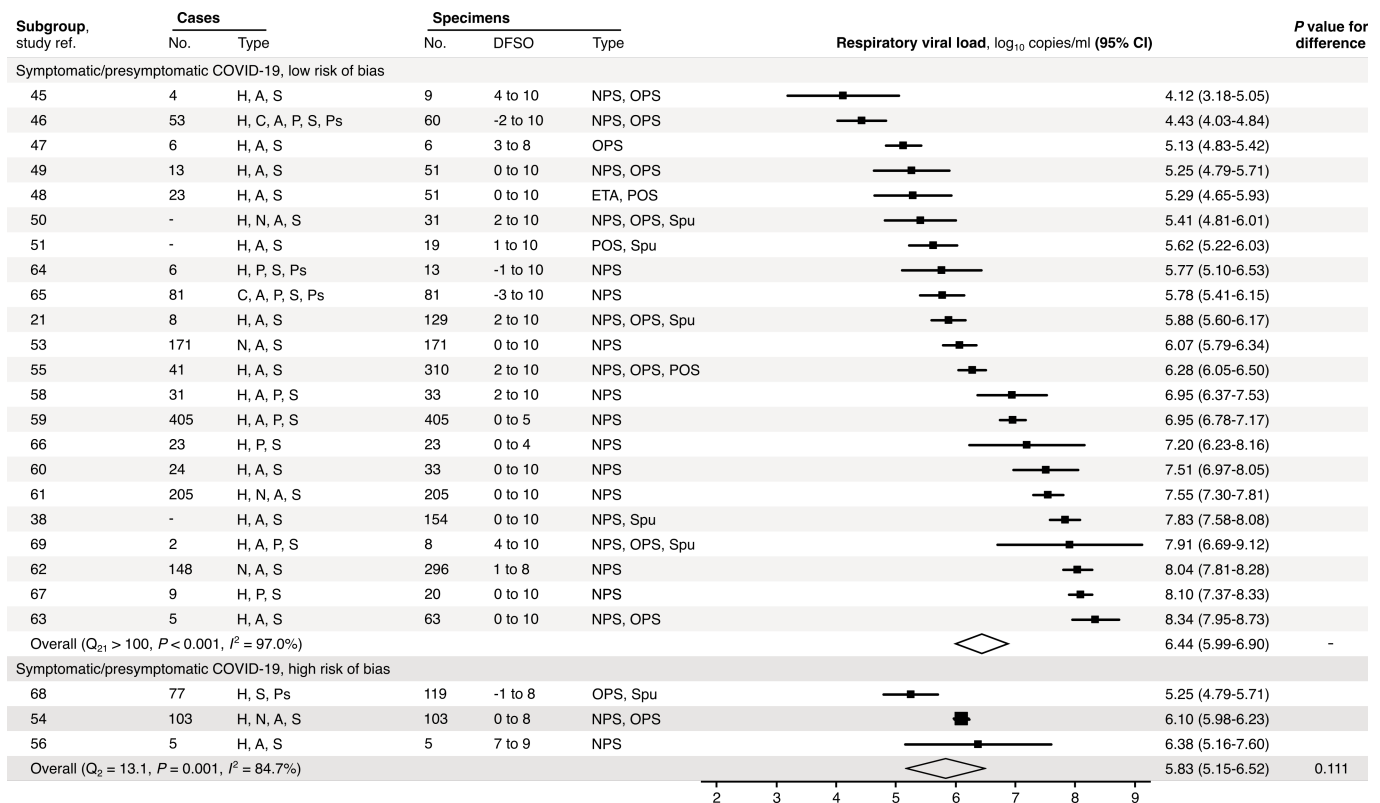
435 assessed using the *P*-value from Cochran's *Q* test (non-significance, $P > 0.05$) and the I^2 statistic

436 ($I^2 < 30\%$ indicates low between-study heterogeneity).



437

438 **Fig. S6. Risk-of-bias sensitivity analysis of between-study heterogeneity for SARS-CoV-2**
439 **rVL for adult COVID-19 cases during the infectious period.** Random-effects meta-analyses,
440 based on the risk of bias of contributing studies, of the expected respiratory viral loads (rVLs) of
441 adult (≥ 18 years old) COVID-19 cases during the infectious period. Quantitative rVLs refer to
442 virus concentrations in the respiratory tract. Case types: hospitalized (H), not admitted (N),
443 community (C), adult (A), pediatric (P), symptomatic (S), presymptomatic (Ps) and
444 asymptomatic (As). Specimen types: endotracheal aspirate (ETA), nasopharyngeal aspirate
445 (NPA), nasopharyngeal swab (NPS), oropharyngeal swab (OPS), posterior oropharyngeal saliva
446 (POS) and sputum (Spu). Dashes denote case numbers that were not obtained. Box sizes denote
447 weighting in the overall estimates. One-sided Welch's *t*-test for difference (non-significance, $P >$
448 0.05). Between-study heterogeneity was assessed using the P -value from Cochran's Q test (non-
449 significance, $P > 0.05$) and the I^2 statistic ($I^2 < 30\%$ indicates low between-study heterogeneity).

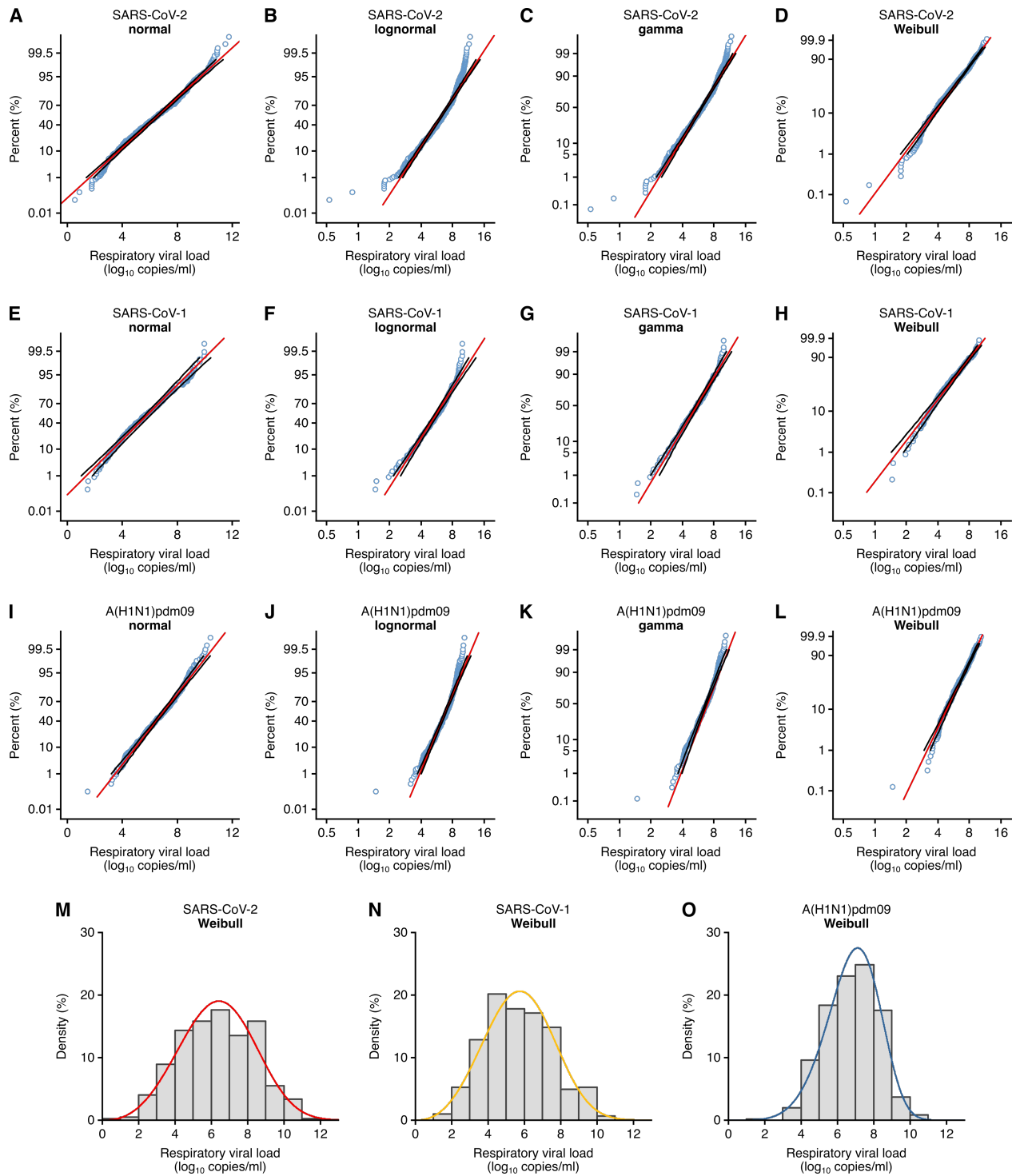


450

451 **Fig. S7. Risk-of-bias sensitivity analysis of between-study heterogeneity for SARS-CoV-2**
 452 **rVL for symptomatic/presymptomatic COVID-19 cases during the infectious period.**

453 Random-effects meta-analyses, based on the risk of bias of contributing studies, of the expected
 454 respiratory viral loads (rVLs) of symptomatic/presymptomatic (≥ 18 years old) COVID-19 cases
 455 during the infectious period. Quantitative rVLs refer to virus concentrations in the respiratory
 456 tract. Case types: hospitalized (H), not admitted (N), community (C), adult (A), pediatric (P),
 457 symptomatic (S), presymptomatic (Ps) and asymptomatic (As). Specimen types: endotracheal
 458 aspirate (ETA), nasopharyngeal swab (NPS), oropharyngeal swab (OPS), posterior
 459 oropharyngeal saliva (POS) and sputum (Spu). Dashes denote case numbers that were not
 460 obtained. Box sizes denote weighting in the overall estimates. One-sided Welch's *t*-test for
 461 difference, non-significance ($P > 0.05$). Between-study heterogeneity was assessed using the *P*-

462 value from Cochran's Q test (non-significance, $P > 0.05$) and the I^2 statistic the I^2 statistic ($I^2 <$
463 30% indicates low between-study heterogeneity).



464

465 **Fig. S8. Respiratory viral loads for SARS-CoV-2, SARS-CoV-1 and A(H1N1)pdm09 best**

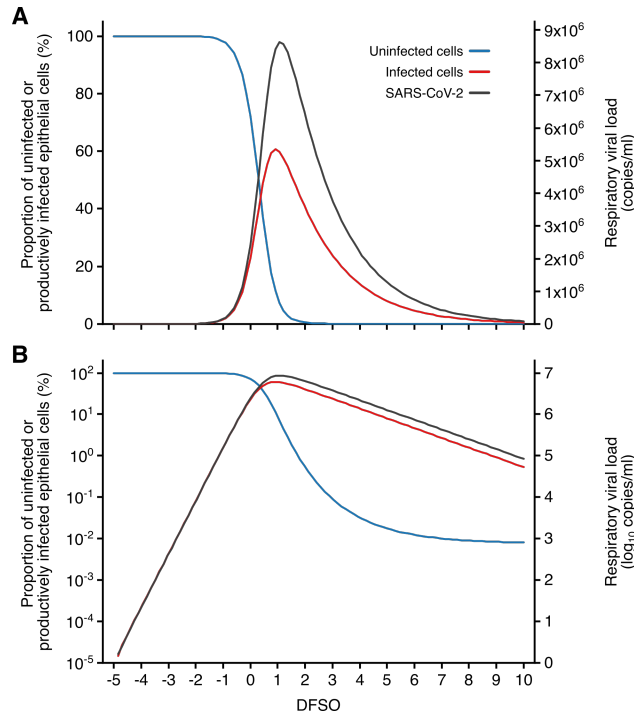
466 **conform to Weibull distributions. (A to D) Normal ($P \leq 0.01$) (A), lognormal ($P \leq 0.01$) (B),**

467 **gamma ($P \leq 0.005$) (C) and Weibull ($P > 0.10$, not significant [NS]) (D) probability plots for**

468 individual sample data of SARS-CoV-2 rVLs across days from symptom onset in the systematic
469 dataset ($N = 941$ samples from $N = 20$ studies). (**E to H**) Normal ($P > 0.05$, NS) (E), lognormal
470 ($P \leq 0.01$) (F), gamma ($P > 0.05$, NS) (G) and Weibull ($P > 0.10$, NS) (H) probability plots for
471 individual sample data of SARS-CoV-1 rVLs in the systematic dataset ($N = 303$ samples from N
472 $= 5$ studies). (**I to L**) Normal ($P \leq 0.01$) (I), lognormal ($P \leq 0.01$) (J), gamma ($P \leq 0.005$) (K) and
473 Weibull ($P > 0.10$, NS) (L) probability plots for individual sample data of A(H1N1)pdm09 rVLs
474 in the systematic dataset ($N = 512$ samples from $N = 10$ studies). These categories included only
475 rVL data from positive (above the detection limit) qRT-PCR measurements. The P -values were
476 determined using the modified Kolmogorov-Smirnov test for the goodness of fit of each
477 distribution. When the null hypothesis is accepted (NS at $P > 0.05$), the probability density
478 function cannot be rejected to describe the distribution of the data. Blue circles, black lines and
479 red lines represent individual sample data, expected distributions and 95% CIs, respectively. (**M**
480 to **O**) Histograms and fitted Weibull distributions of the above data for SARS-CoV-2 (M),
481 SARS-CoV-1 (N) and A(H1N1)pdm09 (O).

482

484 **Fig. S9. Case heterogeneity in rVLs across viruses, COVID-19 subgroups and disease**
485 **course.** (A to C) Estimated respiratory viral loads (rVLs) of SARS-CoV-2 (A), SARS-CoV-1
486 (B) and A(H1N1)pdm09 (C) across case percentile (cp) throughout the infectious periods. (D to
487 G) Estimated SARS-CoV-2 rVLs for adult (D), pediatric (E), symptomatic/presymptomatic (F)
488 and asymptomatic (G) cases across cp throughout the infectious period. (H to S) Estimated
489 SARS-CoV-2 rVLs across cp on different days from symptom onset (DFSO) during the
490 infectious period. Earlier DFSO were excluded based on limited data. Data ranged between the
491 1st and 99th cps. Sample numbers, distribution parameters and descriptive statistics are
492 summarized in Table S7. Lines and bands represent estimates and 95% CIs, respectively.



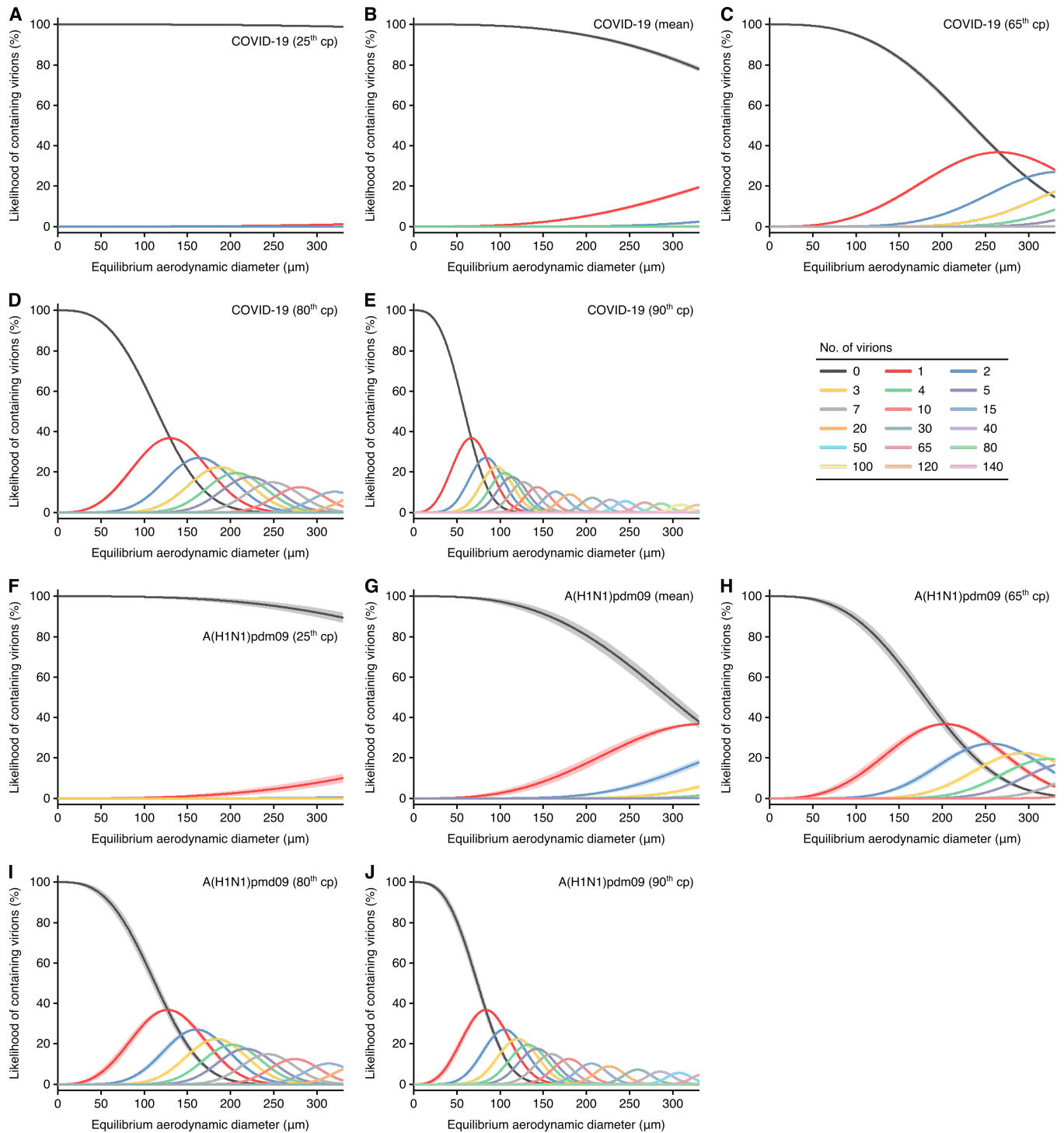
493

494 **Fig. S10. Kinetics of SARS-CoV-2 and airway epithelial cells during respiratory infection.**

495 (A and B) Estimated kinetics of uninfected (blue) and productively infected (red) airway

496 epithelial cells (left axis) and SARS-CoV-2 (right axis) in the respiratory tract, as shown in linear

497 (A) and logarithmic (B) scales.



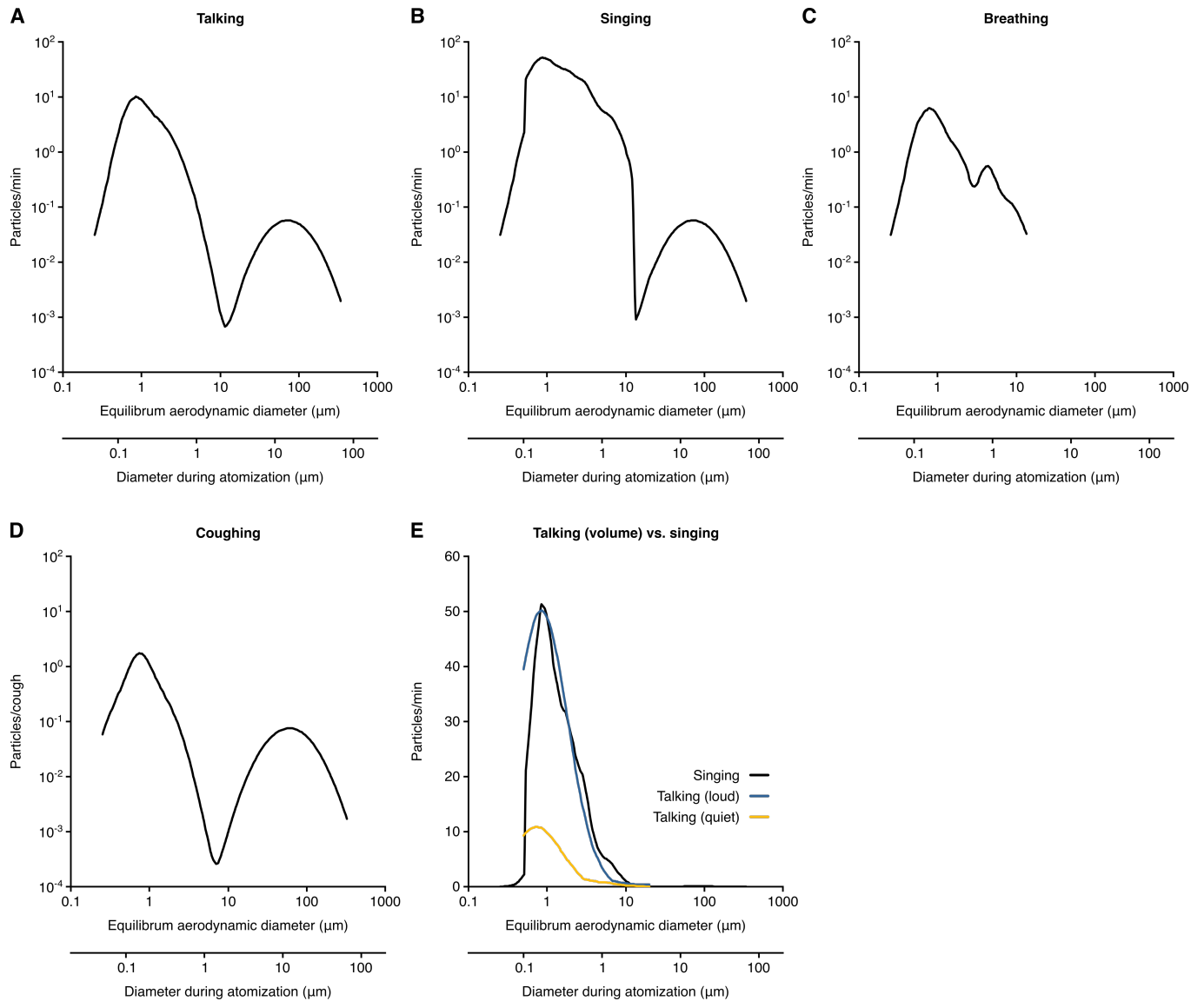
498

499 **Fig. S11. Likelihood of respiratory particles containing SARS-CoV-2 or A(H1N1)pdm09.**

500 (A to E) Estimated likelihood that droplets and aerosols contain viable SARS-CoV-2 when

501 expelled by the 25th case percentile (cp) (A), mean (B), 65th cp (C), 80th cp (D) or 90th cp (E) for

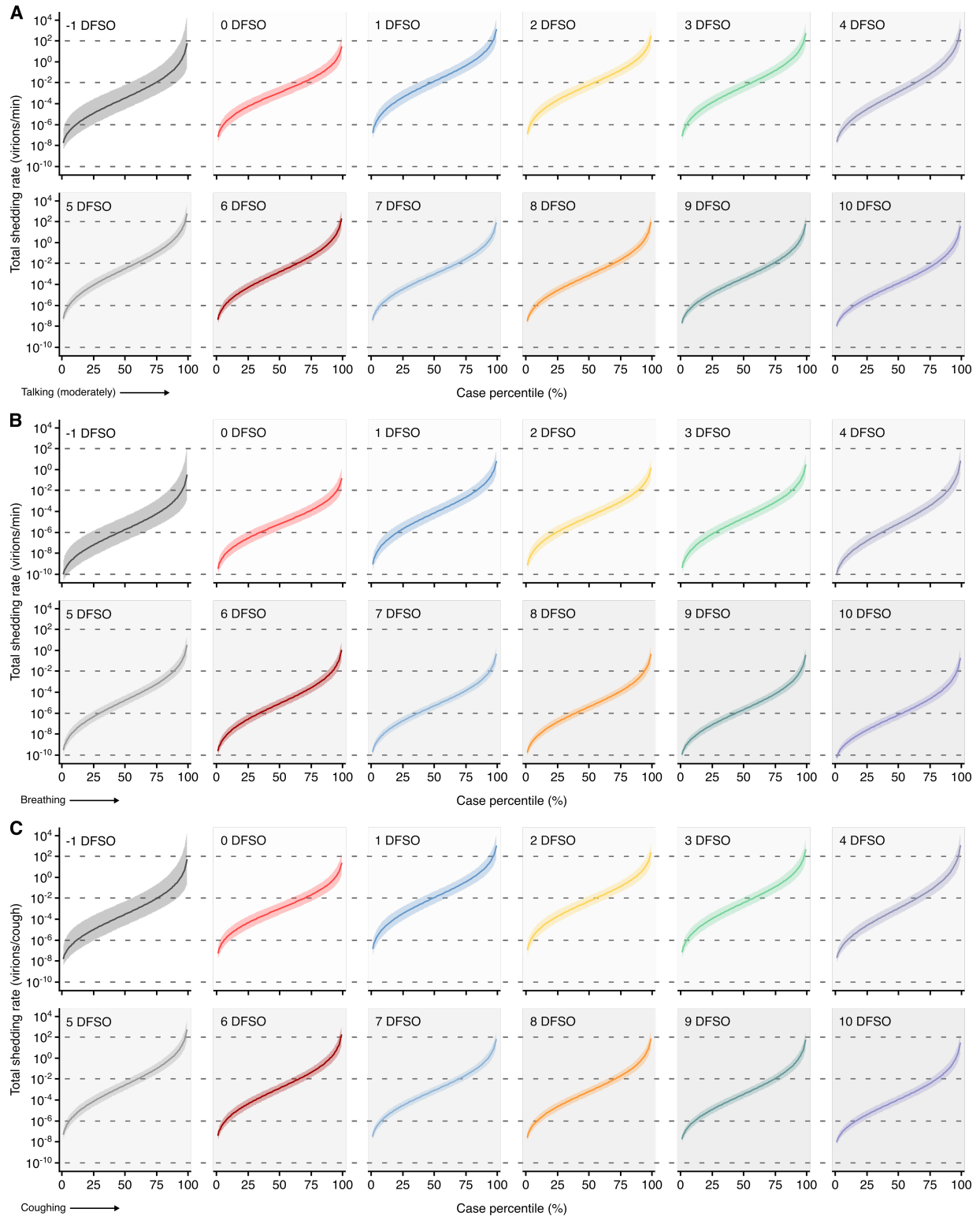
502 COVID-19 cases during the infectious period. (F to J) Estimated likelihood that droplets and
503 aerosols contain viable A(H1N1)pdm09 when expelled by the 25th cp (F), mean (G), 65th cp (H),
504 80th cp (I) or 90th cp (J) for A(H1N1)pmd09 cases during the infectious period. For higher no. of
505 virions, some likelihood curves were omitted to aid visualization. When the likelihood for 0
506 virions approaches 0%, particles are expected to contain at least one viable copy. Lines and
507 bands represent estimates and 95% CIs, respectively, for estimated likelihoods.



508

509 **Fig. S12. Rate profiles for particle expelled by respiratory activities.** (A to D) Rate profiles of
 510 particles expelled while talking (A), singing (B), breathing (C) and coughing (D). (E)
 511 Comparison of the rate profiles of aerosol emission from singing and different amplitudes of
 512 talking. The rate profiles were calculated from the normalized concentrations in Johnson et al
 513 (117) (A, B, D and E) and Morawaska et al (118) (C) or collected from Asadi et al (119) (E).
 514 Dehydrated particle diameters were taken to be 0.5 times the hydrated diameter during

515 atomization. Breathing was taken to expel negligible quantities of larger particles based on the
516 bronchiolar fluid film burst mechanism.

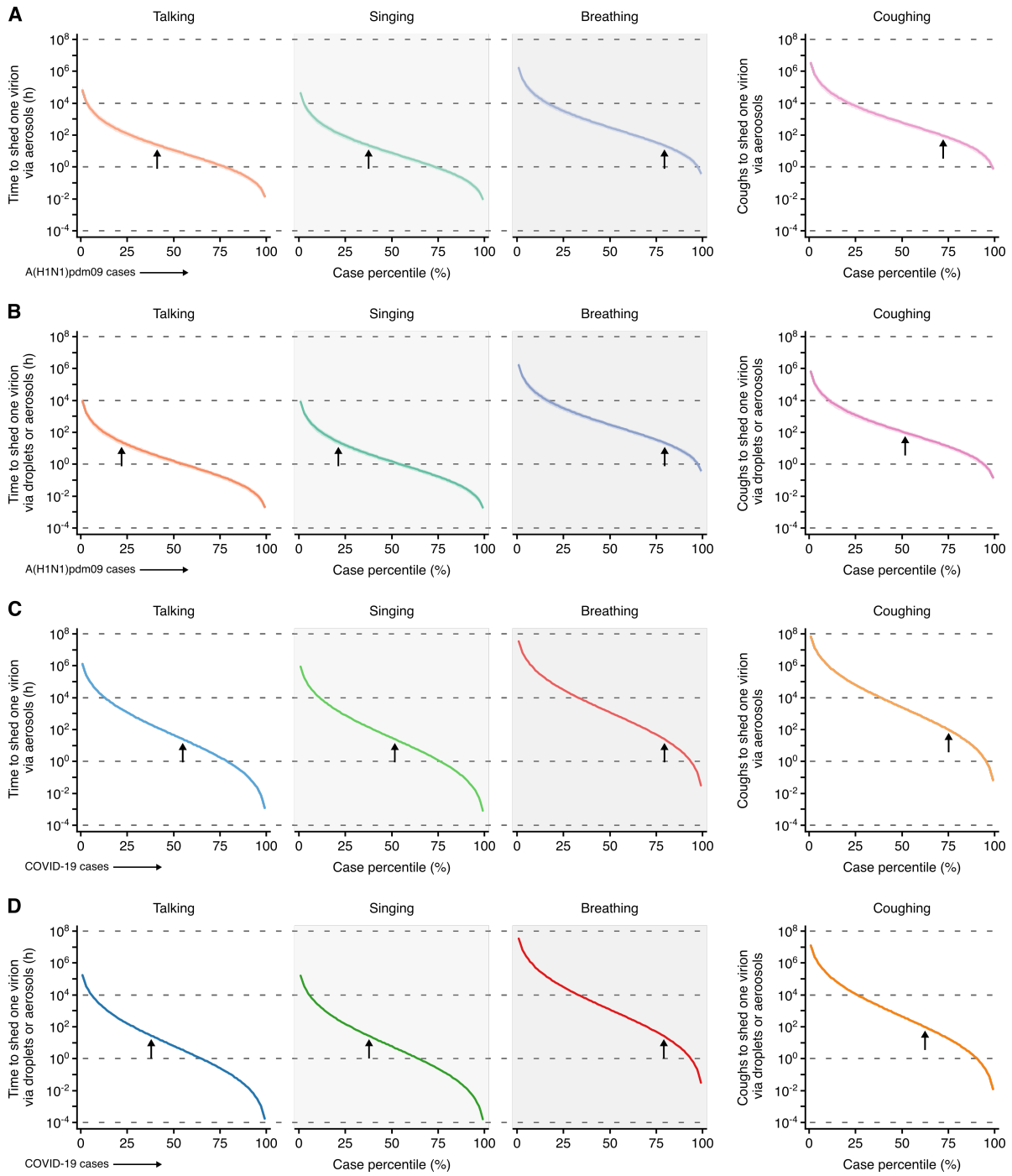


517

518 **Fig. S13. Heterogeneity in shedding SARS-CoV-2 via talking, breathing and coughing. (A to**

519 **C) Case heterogeneity in the total SARS-CoV-2 shedding rate (over all particle sizes) by talking**

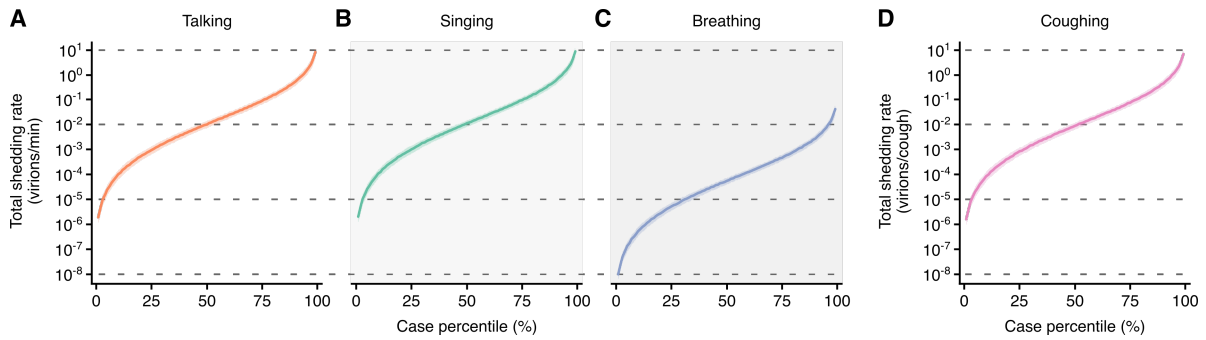
520 at a moderate amplitude (A), breathing (B) or coughing (C) for COVID-19 cases across the
521 infectious period. Earlier presymptomatic days were excluded based on limited data. Data
522 represent estimated rates for viable virus and range between the 1st and 99th cps. Lines and bands
523 represent estimates and 95% CIs, respectively.



524

525 **Fig. S14. Heterogeneity in infectiousness for COVID-19 and A(H1N1)pdm09 cases during**
 526 **the infectious period. (A and B) Estimated time for a A(H1N1)pdm09 case to expel one virion**
 527 **via only aerosols (A) or either droplets or aerosols (B) by talking, singing, breathing or coughing.**
 528 **(C and D) Estimated time for a COVID-19 case to expel one SARS-CoV-2 virion via only**

529 aerosols (C) or either droplets or aerosols (D) by talking, singing, breathing or coughing. Data
530 represent estimated times to expel viable virus and range between the 1st and 99th case percentiles
531 (cps). Vertical arrows depict the cp expected to shed 1 virion in 24 h (talking, singing or
532 breathing) or 100 coughs. Lines and bands represent estimates and 95% CIs, respectively.



533

534 **Fig. S15. Heterogeneity in shedding A(H1N1)pdm09 via droplets and aerosols. (A to D)**

535 Case heterogeneity in the total A(H1N1)pdm09 shedding rates while talking (A), singing (B),

536 breathing (C) and coughing (D) during the infectious period. Data represent estimated rates for

537 viable virus and range between the 1st and 99th cps. Lines and bands represent estimates and 95%

538 CIs, respectively.

Supplementary Tables

Table S1. Search strategy used for MEDLINE.

Database: Ovid MEDLINE® and Epub Ahead of Print, In-Process & Other Non-Indexed Citations and Daily 1946 to August 07, 2020	
#	Searches
1	exp Coronavirus/
2	exp Coronavirus Infections/
3	exp Betacoronavirus/
4	(coronavirus* or corona virus* or betacoronavirus* or OC43 or NL63 or 229E or HKU1 or HcoV* or ncov* or covid* or sars-cov* or sarscov* or Sars-coronavirus* or Severe Acute Respiratory Syndrome* or sudden acute respiratory syndrome*).tw,kf.
5	(2019nCov* or 2019-novel CoV or corona or covid19 or ((novel or new or nouveau) adj2 (CoV or Pandemi*))).tw,kf.
6	(pneumonia.tw,kf. Or exp pneumonia/) and (Wuhan or Hubei).tw,kf.
7	COVID-19.rx,px,ox. Or severe acute respiratory syndrome coronavirus 2.os.
8	exp Influenza A Virus, H1N1 Subtype/
9	(“A/H1N1*” or H1N1* or pdm09 or ((influenza or virus or pandemic) adj4 “2009”) or influenza A or swine flu).tw,kf.
10	1 or 2 or 3 or 4 or 5 or 6 or 7 or 8 or 9
11	((respiratory adj3 (specimen* or sample* or swab*)) or sputum or nares or endotrachea* or endotrache* or endotra* or ((nasal or oral* or throat) adj3 (swab* or sample* or smear* or specimen*)) or NPS or OPS or ((endotrachea* or endotracheal*) adj2 aspirat*) or NPA or ETA or (deep adj4 saliva) or POS or “swab sample*” or “flocked swab*”).tw,kf.
12	Nasal cavity/vi
13	Sputum/vi
14	Nasopharynx/vi
15	Oropharynx/vi
16	*Saliva/vi
17	Pharynx/vi
18	(clinical adj2 (sample* or specimen*)).tw,kf.
19	(“RT-PCR” or “RTPCR” or “ddPCR” or “polymerase chain reaction”).tw,kf.
20	Influenza, Human/vi
21	exp Coronavirus Infections/vi or exp Coronavirus/vi or exp Betacoronavirus/vi
22	polymerase chain reaction/ or multiplex polymerase chain reaction/ or real-time polymerase chain reaction/ or reverse transcriptase polymerase chain reaction/
23	11 or 12 or 13 or 14 or 15 or 16 or 17 or 18 or 19 or 20 or 21 or 22
24	10 and 23
25	(vir* load* or vir* shed* or vir* burden or vir* titer* or vir* titre* or (vir* adj2 count*)).tw,kf.

26	(((copies or copy) adj2 (ml* or milli* or microl*)) or ((RNA* or vir*) adj2 concentration*)).tw,kf.
27	((calibration adj1 curve*) or (standard adj1 curve*)).tw,kf.
28	((ct* adj1 value*) or cycle threshold or (copies adj2 test*) or (copy adj2 test*) or ((copy or copies) adj2 number*)).tw,kf.
29	Viral load/
30	Viral shedding/
31	(“copy/m*” or “copies/m*” or “copy/test*” or “copies/test*”).tw,kf.
32	((test or diagnos*) adj2 sensitiv*).tw,kf.
33	25 or 26 or 27 or 28 or 29 or 30 or 31 or 32
34	24 and 33
35	animals/ not humans/
36	34 not 35

Table S2. Search strategy used for EMBASE.

Database: Embase 1974 to 2020 August 06	
#	Searches
1	coronavirus infection/ or severe acute respiratory syndrome/
2	COVID 19/
3	coronavirus disease 2019/
4	severe acute respiratory syndrome coronavirus 2/ or SARS coronavirus 2/
5	SARS coronavirus/ or betacoronavirus/
6	“influenza a virus (h1n1)”/
7	2009 h1n1 influenza/ or “influenza a (h1n1)”/
8	(coronavirus* or corona virus* or betacoronavirus* or OC43 or NL63 or 229E or HKU1 or HcoV* or ncov* or covid* or sars-cov* or sarscov* or Sars-coronavirus* or Severe Acute Respiratory Syndrome* or Sudden acute respiratory syndrome*).tw,kw.
9	(2019nCov* or 2019-novel CoV or corona or covid19 or ((novel or new or nouveau) adj2 (CoV or Pandemi*))).tw,kw.
10	(pneumonia.tw,kw. Or exp pneumonia/) and (Wuhan or Hubei).tw,kw.
11	(covid or SARS or H1N1 or coronavirus).ox.
12	(“A/H1N1*” or H1N1* or pdm09 or ((influenza or virus or pandemic) adj4 “2009”) or influenza A or swine flu).tw,kw.
13	1 or 2 or 3 or 4 or 5 or 6 or 7 or 8 or 9 or 10 or 11 or 12
14	nose smear/
15	smear/ or nose smear/ or sputum smear/
16	*sputum/
17	*nasopharynx/ or *pharynx/
18	throat culture/
19	saliva analysis/
20	*oropharynx/
21	exp nasopharyngeal aspiration/
22	real time polymerase chain reaction/ or real time reverse transcription polymerase chain reaction/ or reverse transcription polymerase chain reaction/
23	(clinical adj2 (sample* or specimen*)).tw,kw.
24	((respiratory adj3 (specimen* or sample* or swab*)) or sputum or nares or endotrachea* or endotrache* or endotra* or ((nasal or oral* or throat) adj3 (swab* or sample* or smear* or specimen*)) or NPS or OPS or ((endotrachea* or endotracheal*) adj2 aspirat*) or NPA or ETA or (deep adj4 saliva) or POS or “swab sample*” or “flocked swab*”).tw,kw.
25	(“RT-PCR” or “RTPCR” or “ddPCR” or “polymerase chain reaction”).tw,kw.
26	*2009 H1N1 influenza/di or coronavirus disease 2019/di or Coronavirus infection/di
27	14 or 15 or 16 or 17 or 18 or 19 or 20 or 21 or 22 or 23 or 24 or 25 or 26

28	13 and 27
29	virus load/
30	virus shedding/
31	(vir* load* or vir* shed* or vir* burden or vir* titer* or vir* titre* or (vir* adj2 count*)).tw,kw.
32	((copies or copy) adj2 (ml* or milli* or microl*)) or ((RNA* or vir*) adj2 concentration*).tw,kw.
33	((calibration adj1 curve*) or (standard adj1 curve*)).tw,kw.
34	((ct* adj1 value*) or cycle threshold or (copies adj2 test*) or (copy adj2 test*) or ((copy or copies) adj2 number*)).tw,kw.
35	("copy/m*" or "copies/m*" or "copy/test*" or "copies/test*").tw,kw.
36	((test or diagnos*) adj2 sensitiv*).tw,kw.
37	29 or 30 or 31 or 32 or 33 or 34 or 35 or 36
38	28 and 37
39	exp animal/ not human/
40	38 not 39

Table S3. Search strategy used for Cochrane Central.

Database(s): EBM Reviews – Cochrane Central Register of Controlled Trials July 2020	
#	Searches
1	exp Coronavirus/
2	exp Coronavirus Infections/
3	betacoronavirus/
4	(coronavirus* or corona virus* or betacoronavirus* or OC43 or NL63 or 229E or HKU1 or HcoV* or ncov* or covid* or sars-cov* or sarscov* or Sars-coronavirus* or Severe Acute Respiratory Syndrome* or sudden acute respiratory syndrome*).tw,kw.
5	(2019nCov* or 2019-novel CoV or corona or covid19 or ((novel or new or nouveau) adj2 (CoV or Pandemi*))).tw,kw.
6	(pneumonia.tw,kw. Or exp pneumonia/) and (Wuhan or Hubei).tw,kw.
7	exp Influenza A Virus, H1N1 Subtype/
8	(“A/H1N1*” or H1N1* or pdm09 or ((influenza or virus or pandemic) adj4 “2009”) or influenza A or swine flu).tw,kw.
9	1 or 2 or 3 or 4 or 5 or 6 or 7 or 8
10	((respiratory adj3 (specimen* or sample* or swab*)) or sputum or nares or endotrachea* or endotrache* or endotra* or ((nasal or oral* or throat) adj3 (swab* or sample* or smear* or specimen*)) or NPS or OPS or ((endotrachea* or endotracheal*) adj2 aspirat*) or NPA or ETA or (deep adj4 saliva) or POS or “swab sample*” or “flocked swab*”).tw,kw.
11	Nasal cavity/
12	Sputum/
13	Nasopharynx/
14	Oropharynx/
15	*Saliva/
16	Pharynx/
17	(clinical adj2 (sample* or specimen*)).tw,kw.
18	(“RT-PCR” or “RTPCR” or “ddPCR” or “polymerase chain reaction”).tw,kw.
19	exp Coronavirus Infections/vi or exp Coronavirus/vi or exp Betacoronavirus/vi
20	polymerase chain reaction/ or multiplex polymerase chain reaction/ or real-time polymerase chain reaction/ or reverse transcriptase polymerase chain reaction/
21	10 or 11 or 12 or 13 or 14 or 15 or 16 or 17 or 18 or 19 or 20
22	9 and 21
23	(vir* load* or vir* shed* or vir* burden or vir* titer* or vir* titre* or (vir* adj2 count*)).tw,kw.
24	((copies or copy) adj2 (ml* or milli* or microl*)) or ((RNA* or vir*) adj2 concentration*).tw,kw.
25	((calibration adj1 curve*) or (standard adj1 curve*)).tw,kw.

26	((ct* adj1 value*) or cycle threshold or (copies adj2 test*) or (copy adj2 test*) or ((copy or copies) adj2 number*)).tw,kw.
27	Viral load/
28	Viral shedding/
29	("copy/m*" or "copies/m*" or "copy/test*" or "copies/test*").tw,kw.
30	((test or diagnos*) adj2 sensitiv*).tw,kw.
31	23 or 24 or 25 or 26 or 27 or 28 or 29 or 30
32	22 and 31

Table S4. Search strategy used for Web of Science Core Collection.

Web of Science Core Collection	
#	Searches
#1	<p>TOPIC: ((coronavirus* or “corona virus*” or betacoronavirus* or OC43 or NL63 or 229E or HKU1 or HcoV* or ncov* or covid* or “sars-cov*” or sarscov* or “Sars-coronavirus*” or “Severe Acute Respiratory Syndrome*” or “sudden acute respiratory syndrome*” or “2019-ncov*” or 2019nCov* or “2019-novel CoV” or corona or ((novel or new or nouveau) NEAR/2 (CoV or Pandemi*)) OR (pneumonia and (Wuhan or Hubei)) or “A/H1N1*” or H1N1* or pdm09 or ((influenza or virus or pandemic) NEAR/4 “2009”) or “influenza A” or “swine flu”))</p> <p>Indexes=SCI-EXPANDED, SSCI, A&HCI, CPCI-S, CPCI-SSH, ESCI Timespan=All years</p>
#2	<p>TOPIC: (((respiratory NEAR/3 (specimen* or sample* or swab*)) or sputum or nares or endotrachea* or endotrache* or endotra* or ((nasal or oral* or throat) NEAR/3 (swab* or sample* or smear* or specimen*)) or NPS or OPS or ((endotrachea* or endotracheal*) NEAR/2 aspirat*) or NPA or ETA or (deep NEAR/4 saliva) or POS or “swab sample*” or “flocked swab*” or (clinical NEAR/2 (sample* or specimen*)) or “RT-PCR” or “RTPCR” or “ddPCR” or “polymerase chain reaction”))</p> <p>Indexes=SCI-EXPANDED, SSCI, A&HCI, CPCI-S, CPCI-SSH, ESCI Timespan=All years</p>
#3	<p>TOPIC: ((“vir* load*” or “vir* shed*” or “vir* burden” or “vir* titer*” or “vir* titre*” or (vir* NEAR/2 count*) or ((copies or copy) NEAR/2 (ml or mls or milli* or microl*)) or ((RNA* or vir*) NEAR/2 concentration*) or (calibration NEAR/1 curve*) or (standard NEAR/1 curve*) or “ct value*” or “cycle threshold” or ((copies or copy) NEAR/2 test*) or ((copy or copies) NEAR/2 number*) or “copy/m*” or “copies/m*” or “copy/test*” or “copies/test*” or ((test or diagnos*) NEAR/2 sensitiv*))</p> <p>Indexes=SCI-EXPANDED, SSCI, A&HCI, CPCI-S, CPCI-SSH, ESCI Timespan=All years</p>
#4	<p>#3 AND #2 AND #1</p> <p>Refined by: [excluding] WEB OF SCIENCE CATEGORIES: (VETERINARY SCIENCES)</p> <p>Indexes=SCI-EXPANDED, SSCI, A&HCI, CPCI-S, CPCI-SSH, ESCI Timespan=All years</p>

Table S5. Search strategy used for medRxiv and bioRxiv.

medRxiv + bioRxiv (via Publish or Perish program)
Keywords: (covid OR coronavirus OR ncov OR hcov OR h1n1 OR “swine flu” OR COVID19 or SARS) AND (“copies/ml” OR “copy/ml” OR “viral load” OR “copies/test” OR “copy/test” OR “copies per ml” OR “copy per ml”) Publication name: MedRxiv
Keywords: (covid OR coronavirus OR ncov OR hcov OR h1n1 OR “swine flu” OR COVID19 or SARS) AND (“copies/ml” OR “copy/ml” OR “viral load” OR “copies/test” OR “copy/test” OR “copies per ml” OR “copy per ml”) Publication name: BioRxiv

Table S6. Characteristics of contributing studies.

Study*	Country	No. of cases included (no. of specimens)	No. of pediatric cases (no. of specimens)	No. of asymptomatic cases (no. of specimens)	Disease caused by virus	Case definition (WHO)	Pharmacotherapy (type) [†]	Individual data extracted (diluent volume reported) [‡]	Adjusted viral load [§] (type of specimen)	Weight, % (meta-analysis category)	Weight, % (meta-regression)	Risk of bias [¶]
Argyropoulos et al. (2020) (61)	USA	205 (205)	0	0	COVID-19	Confirmed	No	No (no)	Yes (NPS)	3.9 (V), 5.1 (A), 4.3 (S/Ps)	2.11	*****
Baggio et al. (2020) (59)	Switzerland	405 (405)	58 (58)	0	COVID-19	Confirmed	No	Yes (no)	Yes (NPS)	3.9 (V), 5.1 (A), 18.7 (P), 4.4 (S/Ps)	4.16	*****
Fajnzylber et al. (2020) (50)	USA	- (31)	0	0	COVID-19	Confirmed	No	Yes (yes)	Yes (NPS, OPS) No (Spu)	3.6 (V), 4.6 (A), 3.8 (S/Ps)	0.32	*****
Han et al. (2020) (69)	South Korea	2 (8)	1 (6)	0	COVID-19	Confirmed	No	Yes (no)	Yes (NPS, OPS)	2.6 (V), 3.1 (S/Ps)	0.08	*****
Han et al. (2020) (67)	South Korea	12 (27)	12 (27)	3 (7)	COVID-19	Confirmed	No	Yes (no)	Yes (NPS)	3.5 (V), 18.2 (P), 3.8 (S/Ps), 14.3 (As)	0.28	*****
Hung et al. (2020) (55)	China	41 (310)	0	0	COVID-19	Confirmed	No (control group)	No (no)	Yes (NPS, OPS, POS)	3.9 (V), 5.1 (A), 4.4 (S/Ps)	3.18	*****
Hurst et al. (2020) (65)	USA	133 (133)	54 (54)	52 (52)	COVID-19	Confirmed	No	Yes (no)	Yes (NPS)	3.9 (V), 18.9 (P), 4.3 (S/Ps), 21.6 (As)	1.37	*****
Iwasaki et al. (2020) (56)	Japan	5 (5)	0	0	COVID-19	Confirmed	No	Yes (no)	Yes (NPS)	2.6 (V), 3.4 (A), 3.1 (S/Ps)	0.05	***
Kawasuji et al. (2020) (70)	Japan	16 (16)	-	-	COVID-19	Confirmed	Yes (antivirals - type not reported)	Yes (no)	Yes (NPS)	3.2 (V)	0.17	*****
L'Huilier et al. (2020) (66)	Switzerland	23 (23)	23 (23)	0	COVID-19	Confirmed	No	Yes (no)	Yes (NPS)	3.0 (V), 16.2 (P), 3.5 (S/Ps)	0.24	*****
Lavezzo et al. (2020) (46)	Italy	103 (110)	2 (3)	49 (49)	COVID-19	Confirmed	No	Yes (yes)	Yes (NPS, OPS)	3.9 (V), 5.0 (A), 9.8 (P), 4.2 (S/Ps), 21.8 (As)	1.13	*****
Lennon et al. (2020) (52)	USA	2,200 (2,200)	18 (18)	2,200 (2,200 [#])	COVID-19	Confirmed	No	No (yes)	Yes (NPS)	4.0 (V), 5.2 (A), 24.0 (As)	22.60	*****
Lucas et al. (2020) (60)	USA	24 (33)	0	0	COVID-19	Confirmed	Moderate and severe patients (tocilizumab)	Yes (yes)	Yes (NPS)	3.6 (V), 4.7 (A), 4.1 (S/Ps)	0.34	*****
Mitja et al. (2020) (62)	Spain	148 (296)	0	0	COVID-19	Confirmed	No (control group)	No (no)	Yes (NPS)	3.9 (V), 5.1 (A), 4.4 (S/Ps)	3.04	*****

Pan et al. (2020) (68)	China	75 (104)	-	0	COVID-19	Confirmed	No	Yes (no)	Yes (OPS) No (Spu)	3.6 (V), 4.2 (S/Ps)	1.07	****
Peng et al. (2020) (47)	China	6 (6)	0	0	COVID-19	Confirmed	Yes (arbidol, lopinavir, ritonavir)	Yes (no)	Yes (OPS)	3.1 (V), 4.1 (A), 3.6 (S/Ps)	0.06	*****
Perera et al. (2020) (57)	China	- (36)	0	-	COVID-19	Confirmed	No	Yes (no)	Yes (NPA, NPS, OPS, Spu)	3.3 (V), 4.3 (A)	0.39	****
Shi et al. (2020) (54)	China	103 (103)	0	0	COVID-19	Confirmed	No	Yes (no)	Yes (NPS, OPS)	4.0 (V), 5.2 (A), 4.4 (S/Ps)	1.06	****
Shrestha et al. (2020) (53)	USA	171 (171)	0	0	COVID-19	Confirmed	No	Yes (no)	Yes (NPS)	3.9 (V), 5.1 (A), 4.3 (S/Ps)	1.76	*****
To et al. (2020) (48)	China	23 (51)	0	0	COVID-19	Confirmed	No	Yes (yes)	Yes (ETA, POS)	3.5 (V), 4.5 (A), 3.7 (S/Ps)	0.52	*****
van Kampen et al. (2020) (38)	The Netherlands	- (154)	0	0	COVID-19	Confirmed	No	Yes (yes)	Yes (NPS, Spu)	3.9 (V), 5.1 (A), 4.3 (S/Ps)	1.58	*****
Vetter et al. (2020) (63)	Switzerland	5 (63)	0	0	COVID-19	Confirmed	No	Yes (yes)	Yes (NPS, OPS)	3.8 (V), 4.9 (A), 4.2 (S/Ps)	0.65	*****
Wölfel et al. (2020) (21)	Germany	9 (136)	0	1 (4)	COVID-19	Confirmed	No	Yes (yes)	Yes (NPS, OPS) No (Spu)	3.9 (V), 5.0 (A), 4.3 (S/Ps)	1.37	*****
Wyllie et al. (58)	USA	40 (42)	-	9 (9)	COVID-19	Confirmed	No	Yes (yes)	Yes (NPS)	3.7 (V), 4.8 (A), 4.0 (S/Ps), 18.3 (As)	0.43	*****
Xu et al. (2020) (64)	China	7 (14)	7 (14)	1 (1)	COVID-19	Confirmed	No	Yes (no)	Yes (NPS)	3.5 (V), 18.1 (P), 4.3 (S/Ps)	0.14	*****
Zhang et al. (2020) (45)	China	9 (9)	0	0	COVID-19	Confirmed	No	Yes (no)	Yes (NPS, OPS)	3.1 (V), 4.0 (A), 3.6 (S/Ps)	0.09	*****
Zheng et al. (2020) (51)	China	- (19)	0	0	COVID-19	Confirmed	No	Yes (no)	Yes (POS, Spu)	3.8 (V), 4.9 (A), 4.1 (S/Ps)	0.20	*****
Zou et al. (2020) (49)	China	14 (55)	0	1 (4)	COVID-19	Confirmed	No	Yes (no)	Yes (NPS, OPS)	3.7 (V), 4.9 (A), 3.6 (S/Ps)	0.57	*****
Chen et al. (2006) (72)	China	154 (154#)	0	0	SARS	Confirmed	Yes (oseltamivir, broad-spectrum antibiotics, ribavirin)	Yes (no)	Yes (NPS)	14.0 (V)	1.57	*****
Chu et al. (2004) (73)*	China	11 (11)	0	0	SARS	Confirmed	No (control group)	Yes (yes)	Yes (NPS)	8.6 (V)	0.11	*****
Chu et al. (2005) (75)	China	57 (57)	0	0	SARS	Confirmed	No	Yes (yes)	Yes (NPA)	13.3 (V)	0.59	*****
Cheng et al. (2004) (77)	China	59 (59)	0	0	SARS	Confirmed	Yes (ribavirin, hydrocortisone, prednisolone,	Yes (yes)	Yes (NPA)	13.4 (V)	0.61	*****

Hung et al. (2004) (76)	China	60 (60)	0	0	SARS	Confirmed	methylprednisolone Yes (ribavirin, hydrocortisone, prednisolone, methylprednisolone)	No (yes)	Yes (NPA)	13.5 (V)	0.62	*****
Peiris et al. (2003) (78)*	China	14 (42)	0	0	SARS	Confirmed	Yes (ribavirin, hydrocortisone, prednisolone, methylprednisolone)	Yes (no)	Yes (NPA)	13.4 (V)	0.43	*****
Poon et al. (2003) (71)	China	40 (40)	0	0	SARS	Confirmed	No	No (yes)	Yes (NPA)	11.3 (V)	0.41	****
Poon et al. (2004) (74)	China	- (43)	0	0	SARS	Confirmed	-	No (yes)	Yes (NPA)	12.5 (V)	0.44	*****
Alves et al. (2020) (100)	Brazil	86 (86)	-	15 (15)	Influenza A(H1N1)pdm09	Confirmed	No	No (yes)	Yes (NPA, NPS, OPS)	3.7 (V)	0.88	****
Chan et al. (2011) (97)	China	58 (58)	0	0	Influenza A(H1N1)pdm09	Confirmed	No (pretreatment)	Yes (no)	Yes (NPA, NPS, OPS)	3.7 (V)	0.60	*****
Cheng et al. (2010) (101)	China	60 (60)	-	0	Influenza A(H1N1)pdm09	Confirmed	No (pretreatment)	No (no)	Yes (NPA)	3.7 (V)	0.62	*****
Cowling et al. (2010) (98)	China	45 (54)	22 (31)	0	Influenza A(H1N1)pdm09	Confirmed	Yes (22 cases on oseltamivir)	Yes (yes)	Yes (NPS, OPS)	3.7 (V)	0.55	*****
Duchamp et al. (2010) (104)	France	209 (209)	209 (209)	0	Influenza A(H1N1)pdm09	Confirmed	Yes (oseltamivir, zanamivir)	No (yes)	Yes (NPS)	3.8 (V)	2.15	****
Esposito et al. (2011) (95)	Italy	74 (282)	74 (282)	0	Influenza A(H1N1)pdm09	Confirmed	No	Yes (yes)	Yes (NPS)	3.8 (V)	2.90	*****
Hung et al. (2010) (92)	China	87 (87)	-	0	Influenza A(H1N1)pdm09	Confirmed	Yes (oseltamivir)	Yes (no)	Yes (NPA, NPS)	3.8 (V)	0.89	*****
Ip et al. (2016) (83)	China	17 (20)	7 (-)	0	Influenza A(H1N1)pdm09	Confirmed	No	Yes (no)	Yes (NPS, OPS)	3.6 (V)	0.21	*****
Ito et al. (2012) (94)	Japan	34 (34)	-	0	Influenza A(H1N1)pdm09	Confirmed	No (pretreatment)	Yes (yes)	Yes (NPS)	3.7 (V)	0.35	****
Killingley et al. (2010) (89)	United Kingdom	12 (21)	-	0	Influenza A(H1N1)pdm09	Confirmed	Yes (oseltamivir)	Yes (yes)	Yes (NPS)	3.5 (V)	0.22	*****
Launes et al. (2012) (88)	Spain	47 (47)	47 (47)	0	Influenza A(H1N1)pdm09	Confirmed	No (pretreatment)	No (no)	Yes (NPA)	3.7 (V)	0.48	*****
Lee et al. (2011) (90)	China	48 (48)	0	0	Influenza A(H1N1)pdm09	Confirmed	No (pretreatment)	No (no)	Yes (NPA)	3.7 (V)	0.49	*****
Lee et al. (2011) (96)	Singapore	578 (578)	231 (231)	0	Influenza A(H1N1)pdm09	Confirmed	No (pretreatment)	No (no)	Yes (NPS)	3.8 (V)	5.94	*****

Li et al. (2010) (81)	China	581 (581)	522 (522)	0	Influenza A(H1N1)pdm09	Confirmed	No (pretreatment)	No (no)	Yes (OPS)	3.8 (V)	5.97	*****
Li et al. (2010) (97)	China	27 (59)	-	0	Influenza A(H1N1)pdm09	Confirmed	No (non-treated group)	No (no)	Yes (NPA, NPS, OPS)	3.7 (V)	0.61	*****
Loeb et al. (2012) (79)	Canada	97 (218)	-	- (17)	Influenza A(H1N1)pdm09	Confirmed	No	No (no)	Yes (NPS)	3.8 (V)	2.24	*****
Lu et al. (2012) (82)	China	13 (25)	-	0	Influenza A(H1N1)pdm09	Confirmed	Yes (oseltamivir, zanamivir)	Yes (no)	Yes (NPS)	3.5 (V)	0.26	*****
Meschi et al. (2011) (86)	Italy	533 (533)	0	0	Influenza A(H1N1)pdm09	Confirmed	No (pretreatment)	No (no)	Yes (NPS)	3.8 (V)	5.48	*****
Ngaosuwankul et al. (2010) (102)	China	12 (33)	-	0	Influenza A(H1N1)pdm09	Confirmed	No (pretreatment)	No (yes)	Yes (NPA, NPS, OPS)	3.6 (V)	0.34	*****
Rath et al. (2012) (84)	Germany	27 (41)	27 (41)	0	Influenza A(H1N1)pdm09	Confirmed	Yes (oseltamivir)	Yes (yes)	Yes (NPS)	3.7 (V)	0.42	*****
Suess et al. (2010) (80)	Germany	51 (129)	12 (-)	1 (1)	Influenza A(H1N1)pdm09	Confirmed	Yes (oseltamivir)	No (no)	Yes (NPA, NPS, OPS)	3.8 (V)	1.33	*****
Thai et al. (2014) (93)	Vietnam	33 (123)	16 (-)	5 (28)	Influenza A(H1N1)pdm09	Confirmed	Yes (oseltamivir)	Yes (yes)	Yes (NPS)	3.8 (V)	1.26	*****
To et al. (2010) (99)	China	22 (22)	-	0	Influenza A(H1N1)pdm09	Confirmed	No (pretreatment)	No (no)	Yes (NPA, NPS, OPS)	3.4 (V)	0.23	*****
To et al. (2010) (103)	China	50 (50)	0	0	Influenza A(H1N1)pdm09	Confirmed	Yes (oseltamivir, nebulized zanamivir)	No (no)	Yes (NPA, NPS)	3.6 (V)	0.51	*****
Watanabe et al. (2011) (105)	Japan	251 (251)	251 (251)	0	Influenza A(H1N1)pdm09	Confirmed	No (pretreatment)	No (yes)	Yes (NPA)	3.8 (V)	2.58	*****
Wu et al. (2012) (85)	China	64 (89)	-	0	Influenza A(H1N1)pdm09	Confirmed	Yes (oseltamivir)	No (yes)	Yes (NPS)	3.7 (V)	0.91	*****
Yang et al. (2011) (87)	China	251 (251)	-	0	Influenza A(H1N1)pdm09	Confirmed	N/A	No (yes)	Yes (OPS)	3.8 (V)	6.50	*****

*Data shown as “-” were not obtained from the paper or authors.

[†]Responses of “no” for pharmacotherapy are based on no pharmacotherapy given to the patients as described explicitly or none reported in the study.

[‡]For studies reporting specimen measurements as individual sample data (either in numerical or graphical formats), the sample data was extracted for analysis.

[§]Specimen measurements were converted to rVLs based on the dilution factor for specimens immersed in transport media.

^{||}Abbreviations for random-effects meta-analyses: virus meta-analysis (V), adult subgroup (A), pediatric subgroup (P), symptomatic/presymptomatic subgroup (S/Ps), asymptomatic subgroup (As).

[¶]The hybrid JBI Critical Appraisal Checklist was used, with more stars indicating lower risk of bias. Studies were considered to have low risk of bias if they met the majority of the items (≥6/10 items). Results from each study are shown in Table S9.

[#]For these studies, 2,147 (Lennon et al.) and 134 (Chen et al.) individual specimen measurements were obtained for the individual sample datasets.

[‡]For Chu et al., only specimen measurements at 20 DFSO were collected, as 5-15 DFSO were specimens reported in Peiris et al.

Table S7. Descriptive parameters for respiratory viral loads based on individual sample data.

Category	Weibull distribution parameters		Respiratory viral load, log ₁₀ copies/ml						
	n* (specimens)	n* (studies)	Scale factor (95% CI)	Shape factor (95% CI)	Mean (95% CI) [†]	SD [†]	80 th percentile (95% CI) [‡]	90 th percentile (95% CI) [‡]	99 th percentile (95% CI) [‡]
SARS-CoV-2 (overall) [§]	3,820	25	7.01 (6.94-7.08)	3.47 (3.39-3.56)	6.29 (6.22-6.35)	2.04	8.04 (7.96-8.11)	8.91 (8.83-9.00)	10.88 (10.75-11.01)
SARS-CoV-1 (overall) [§]	303	5	6.37 (6.15-6.60)	3.40 (3.12-3.71)	5.72 (5.51-5.93)	1.86	7.33 (7.09-7.57)	8.14 (7.86-8.43)	9.98 (9.56-10.42)
A(H1N1)pdm09 (overall) [§]	512	10	7.39 (7.27-7.51)	5.43 (5.07-5.81)	6.81 (6.69-6.94)	1.45	8.07 (7.94-8.20)	8.62 (8.47-8.76)	9.79 (9.59-10.00)
SARS-CoV-2 (adult) [§]	3,573	19	7.00 (6.93-7.07)	3.47 (3.38-3.57)	6.27 (6.21-6.34)	2.04	7.99 (7.91-8.06)	8.88 (8.79-8.97)	11.01 (10.88-11.14)
SARS-CoV-2 (pediatric) [§]	186	8	7.46 (7.16-7.78)	3.64 (3.25-4.08)	6.72 (6.42-7.01)	2.06	8.50 (8.17-8.85)	9.38 (9.00-9.78)	11.34 (10.77-11.96)
SARS-CoV-2 (symptomatic/presymptomatic) [§]	1,560	21	7.41 (7.31-7.51)	3.81 (3.67-3.97)	6.68 (6.58-6.78)	2.01	8.39 (8.28-8.50)	9.22 (9.09-9.34)	11.05 (10.86-11.25)
SARS-CoV-2 (asymptomatic) [§]	2,221	7	6.72 (6.63-6.81)	3.33 (3.22-3.44)	6.01 (5.92-6.09)	2.02	8.04 (7.96-8.11)	8.91 (8.83-9.00)	10.88 (10.75-11.01)
SARS-CoV-2 (all DFSO) [§]	941	20	7.04 (6.90-7.18)	3.47 (3.30-3.65)	6.32 (6.19-6.45)	2.04	8.10 (7.96-8.25)	8.95 (8.78-9.13)	10.93 (10.66-11.21)
SARS-CoV-2 (-3 DFSO)	1	1	-	-	10.34	-	-	-	-
SARS-CoV-2 (-2 DFSO)	3	2	-	-	4.22 (2.41-6.02)	1.59	-	-	-
SARS-CoV-2 (-1 DFSO)	15	5	6.17 (5.11-7.47)	2.82 (1.89-4.19)	5.48 (4.25-6.70)	2.21	7.31 (6.11-8.75)	8.30 (6.88-10.02)	10.62 (8.38-13.45)
SARS-CoV-2 (0 DFSO)	48	10	6.63 (6.08-7.23)	3.46 (2.81-4.26)	5.97 (5.43-6.51)	1.85	7.61 (7.01-8.25)	8.43 (7.75-9.18)	10.31 (9.29-11.43)
SARS-CoV-2 (1 DFSO)	59	10	7.79 (7.23-8.40)	3.58 (2.91-4.40)	7.00 (6.43-7.58)	2.26	8.90 (8.28-9.56)	9.83 (9.12-10.61)	11.93 (10.84-13.14)
SARS-CoV-2 (2 DFSO) [¶]	70	14	7.40 (6.91-7.92)	3.60 (2.96-4.37)	6.65 (6.14-7.16)	2.17	8.44 (7.91-9.01)	9.32 (8.70-10.00)	11.31 (10.33-12.37)
SARS-CoV-2 (3 DFSO) [¶]	73	16	7.30 (6.79-7.85)	3.31 (2.74-4.00)	6.53 (6.01-7.06)	2.27	8.43 (7.86-9.04)	9.39 (8.73-10.11)	11.58 (10.53-12.73)
SARS-CoV-2 (4 DFSO) [¶]	83	16	6.86 (6.32-7.45)	2.75 (2.31-3.27)	6.09 (5.56-6.62)	2.46	8.16 (7.54-8.82)	9.29 (8.55-10.10)	11.96 (10.76-13.30)
SARS-CoV-2 (5 DFSO) [¶]	92	15	7.17 (6.70-7.67)	3.16 (2.69-3.72)	6.41 (5.95-6.88)	2.27	8.33 (7.81-8.89)	9.33 (8.72-10.00)	11.63 (10.66-12.69)
SARS-CoV-2 (6 DFSO) [¶]	105	15	6.84 (6.41-7.29)	3.13 (2.67-3.66)	6.10 (5.68-6.53)	2.23	7.96 (7.49-8.46)	8.93 (8.36-9.53)	11.14 (10.24-12.12)
SARS-CoV-2 (7 DFSO) [¶]	133	19	6.60 (6.23-6.98)	3.13 (2.73-3.59)	5.91 (5.55-6.27)	2.11	7.68 (7.27-8.11)	8.61 (8.13-9.12)	10.75 (9.98-11.58)
SARS-CoV-2 (8 DFSO) [¶]	123	19	6.51 (6.12-6.92)	3.03 (2.62-3.49)	5.82 (5.44-6.19)	2.13	7.62 (7.18-8.08)	8.58 (8.06-9.12)	10.78 (9.96-11.67)
SARS-CoV-2 (9 DFSO) [¶]	128	19	6.26 (5.87-6.67)	2.87 (2.50-3.29)	5.57 (5.20-5.94)	2.14	7.38 (6.95-7.85)	8.37 (7.85-8.92)	10.66 (9.83-11.55)
SARS-CoV-2 (10 DFSO) [¶]	113	17	5.76 (5.34-6.21)	2.58 (2.22-2.99)	5.13 (4.74-5.52)	2.13	6.92 (6.45-7.44)	7.96 (7.37-8.58)	10.41 (9.45-11.47)

*These two columns summarize the cumulative number of specimens (left) collected from the number of contributing studies (right) for each category in the systematic dataset.

†The mean and sample SD were calculated on the entirety of individual sample data for each category. These data were collected from studies clearly reporting data for individual specimens.

‡The Weibull quantile distributions were used to determine rVLs at the 80th, 90th and 99th cps.

§These categories included only rVL data from positive (above the detection limit) assay measurements.

||Data for earlier DFSO were excluded from distribution fitting based on limited data, and empty cells were marked with "-".

¶These categories included negative assay measurements (set at the detection limit to estimate rVLs; N = 4, 3, 7, 10, 13, 16, 14, 22 and 16 specimens for 2-10 DFSO, respectively) for cases that tested positive at an earlier DFSO.

Table S8. Model parameters describing SARS-CoV-2 kinetics during respiratory infection.

Parameter	Description	Value (95% CI)	Units
β	Infection rate constant	3.56 (2.51-4.61)	$\times 10^{-7}$ (copies/ml) ⁻¹ day ⁻¹
ρ	Cellular shedding rate of virus	1.83 (0.69-2.97)	copies/ml day ⁻¹ cell ⁻¹
c	Clearance rate of virus	6.28 (0.59-12.0)	day ⁻¹
δ	Clearance rate of infected epithelial cells	0.55 (0.30-0.79)	day ⁻¹
$R_{0,c}$	Cellular basic reproductive number	9.48	unitless
V_0^*	Initial rVL parameter	4	copies/ml
I_0^*	Initial number of infected cells	0	cells
T_0^*	Initial number of uninfected cells	5×10^7	cells

*Initial values were used as inputs for the numerical estimation of the model parameters.

Table S9. Assessment of risk of bias based on the hybrid JBI critical appraisal checklist.

Study	Checklist items*									
	1	2	3	4	5	6	7	8	9	10
Argyropoulos et al. (61)	Green	Green	Green	Green	Red	Green	Green	Red	Green	Green
Baggio et al. (59)	Green	Green	Green	Green	Red	Green	Green	Red	Red	Green
Fajnzylber et al. (50)	Green	Green	Green	Green	Green	Green	Green	Green	Green	Green
Han et al. (69)	Red	Green	Red	Green	Red	Green	Green	Red	Green	Green
Han et al. (67)	Green	Green	Green	Green	Red	Green	Green	Red	Green	Green
Hung et al. (55)	Green	Green	Red	Green	Red	Green	Green	Red	Green	Green
Hurst et al. (65)	Green	Green	Green	Green	Red	Green	Green	Red	Green	Green
Iwasaki et al. (56)	Yellow	Red	Yellow	Yellow	Red	Green	Green	Red	Red	Green
Kawasuji et al. (70)	Green	Green	Yellow	Green	Red	Green	Green	Red	Red	Green
L'Huillier et al. (66)	Green	Green	Green	Green	Red	Green	Green	Red	Green	Green
Lavezzo et al. (46)	Green	Green	Red	Green	Red	Green	Green	Red	Green	Green
Lennon et al. (52)	Red	Green	Green	Green	Red	Green	Green	Red	Green	Green
Lucas et al. (60)	Green	Green	Yellow	Yellow	Red	Green	Green	Red	Green	Green
Mitja et al. (62)	Red	Green	Green	Green	Red	Green	Green	Red	Green	Green
Pan et al. (68)	Green	Red	Yellow	Yellow	Red	Green	Green	Red	Red	Green
Peng et al. (47)	Green	Green	Green	Green	Red	Green	Green	Red	Green	Green
Perera et al. (57)	Green	Red	Yellow	Green	Red	Green	Green	Red	Red	Green
Shi et al. (54)	Green	Green	Yellow	Yellow	Red	Green	Green	Red	Green	Green
Shrestha et al. (53)	Red	Green	Green	Green	Red	Green	Green	Red	Green	Green
To et al. (48)	Green	Green	Green	Green	Red	Green	Green	Red	Green	Green
van Kampen et al. (38)	Green	Green	Green	Green	Red	Green	Green	Red	Red	Green
Vetter et al. (63)	Green	Green	Green	Green	Red	Green	Green	Red	Green	Green
Wölfel et al. (21)	Green	Green	Red	Yellow	Red	Green	Green	Red	Green	Green
Wyllie et al. (58)	Green	Green	Yellow	Green	Red	Green	Green	Red	Red	Green
Xu et al. (64)	Green	Green	Green	Green	Red	Green	Green	Red	Green	Green
Zhang et al. (45)	Green	Green	Green	Green	Red	Green	Green	Red	Green	Green
Zheng et al. (51)	Green	Green	Green	Green	Red	Green	Green	Red	Red	Green
Zou et al. (49)	Green	Green	Green	Green	Red	Green	Green	Red	Green	Green
Chen et al. (72)	Green	Green	Green	Green	Red	Green	Green	Red	Green	Green
Chu et al. (73)	Green	Green	Green	Green	Red	Green	Green	Red	Green	Green
Chu et al. (75)	Green	Green	Green	Green	Red	Green	Green	Red	Green	Green
Cheng et al. (77)	Green	Green	Green	Green	Red	Green	Green	Red	Green	Green
Hung et al. (76)	Green	Green	Yellow	Yellow	Red	Green	Green	Red	Green	Green
Peiris et al. (78)	Green	Green	Green	Green	Red	Green	Green	Red	Green	Green
Poon et al. (71)	Green	Red	Yellow	Yellow	Red	Green	Green	Red	Red	Green
Poon et al. (74)	Green	Red	Yellow	Green	Red	Green	Green	Red	Red	Green
Alves et al. (100)	Green	Red	Yellow	Yellow	Red	Green	Green	Red	Red	Green
Chan et al. (91)	Green	Green	Yellow	Green	Red	Green	Green	Red	Green	Green
Cheng et al. (101)	Green	Red	Green	Green	Red	Green	Green	Red	Red	Green
Cowling et al. (98)	Green	Green	Red	Green	Red	Green	Green	Red	Green	Green
Duchamp et al. (104)	Green	Green	Yellow	Yellow	Red	Green	Green	Red	Red	Green
Esposito et al. (95)	Green	Green	Yellow	Yellow	Red	Green	Green	Red	Red	Green
Hung et al. (92)	Red	Green	Green	Green	Red	Green	Green	Red	Green	Green
Ip et al. (83)	Green	Green	Red	Yellow	Red	Green	Green	Red	Green	Green
Ito et al. (94)	Green	Red	Yellow	Yellow	Red	Green	Green	Red	Red	Green
Killingley et al. (89)	Green	Green	Green	Green	Red	Green	Green	Red	Green	Green
Launes et al. (88)	Green	Green	Green	Green	Red	Green	Green	Red	Green	Green
Lee et al. (90)	Green	Green	Yellow	Yellow	Red	Green	Green	Red	Red	Green
Lee et al. (96)	Green	Green	Green	Green	Red	Green	Green	Red	Green	Green
Li et al. (81)	Green	Green	Yellow	Yellow	Red	Green	Green	Red	Red	Green
Li et al. (97)	Green	Green	Green	Green	Red	Green	Green	Red	Red	Green
Loeb et al. (79)	Green	Green	Green	Green	Red	Green	Green	Red	Red	Green
Lu et al. (82)	Green	Green	Green	Green	Red	Green	Green	Red	Red	Green
Meschi et al. (86)	Green	Green	Green	Green	Red	Green	Green	Red	Green	Green
Ngaosuwankul et al. (102)	Green	Green	Yellow	Yellow	Red	Green	Green	Red	Red	Green
Rath et al. (84)	Green	Green	Green	Green	Red	Green	Green	Red	Green	Green
Suess et al. (80)	Green	Green	Green	Green	Red	Green	Green	Red	Green	Green
Thai et al. (93)	Green	Green	Green	Green	Red	Green	Green	Red	Green	Green
To et al. (103)	Green	Green	Yellow	Yellow	Red	Green	Green	Red	Red	Green
To et al. (99)	Green	Green	Green	Green	Red	Green	Green	Red	Red	Green
Watanabe et al. (105)	Green	Green	Green	Green	Red	Green	Green	Red	Green	Green
Wu et al. (85)	Green	Green	Yellow	Yellow	Red	Green	Green	Red	Red	Green
Yang et al. (87)	Green	Red	Yellow	Yellow	Red	Green	Green	Red	Red	Green

*Descriptions of each item are included in the hybrid JBI critical appraisal checklist (Table S10). Green, yellow and red represent yes, unclear and no, respectively.

Table S10. Hybrid JBI critical appraisal checklist

Reviewer _____ Date _____

Author _____ Year _____ Record Number _____

	Yes	No	Unclear	Not applicable
1. Was the sample frame appropriate to address the target population?	<input type="checkbox"/>	<input type="checkbox"/>	<input type="checkbox"/>	<input type="checkbox"/>
2. Were the study subjects and the setting described in detail?	<input type="checkbox"/>	<input type="checkbox"/>	<input type="checkbox"/>	<input type="checkbox"/>
3. Did the study have consecutive inclusion of participants for case series and cohort studies? Did the study use probability-based sampling for cross-sectional studies?	<input type="checkbox"/>	<input type="checkbox"/>	<input type="checkbox"/>	<input type="checkbox"/>
4. Was the response rate adequate, and if not, was the low response rate managed appropriately?	<input type="checkbox"/>	<input type="checkbox"/>	<input type="checkbox"/>	<input type="checkbox"/>
5. Was the sample size adequate?	<input type="checkbox"/>	<input type="checkbox"/>	<input type="checkbox"/>	<input type="checkbox"/>
6. Were valid methods used for the identification of the condition?	<input type="checkbox"/>	<input type="checkbox"/>	<input type="checkbox"/>	<input type="checkbox"/>
7. Were standard, valid methods used for measurement of the exposure?	<input type="checkbox"/>	<input type="checkbox"/>	<input type="checkbox"/>	<input type="checkbox"/>
8. Was the exposure measured in an objective, reliable way for all participants?	<input type="checkbox"/>	<input type="checkbox"/>	<input type="checkbox"/>	<input type="checkbox"/>
9. Was there clear reporting of clinical information of the participants?	<input type="checkbox"/>	<input type="checkbox"/>	<input type="checkbox"/>	<input type="checkbox"/>
10. Was statistical analysis appropriate?	<input type="checkbox"/>	<input type="checkbox"/>	<input type="checkbox"/>	<input type="checkbox"/>

Overall appraisal: Include Exclude Seek further info

Comments (Including reason for exclusion)

Tool Guidance

This hybrid checklist was based on the JBI Critical Appraisal Checklists for case series, prevalence studies and analytical cross-sectional studies.

1. Was the sample frame appropriate to address the target population?

This question relies upon knowledge of the broader characteristics of the population of interest and the geographical area.

This study broadly investigates the respiratory viral load for the diseases of interest. The population of interest is the general population infected with SARS-CoV-2, SARS-CoV-1, or A(H1N1)pdm09. The geographical area is not constrained. Sample frames restricted to particular subgroups within the general infected population were considered appropriate if they targeted one of the following groups analysed in our study: asymptomatic, presymptomatic, symptomatic, adult, pediatric, hospitalized, non-hospitalized, or community.

2. Were the study subjects and the setting described in detail?

Certain diseases or conditions vary in prevalence across different geographic regions and populations (e.g. Women vs. Men, sociodemographic variables between countries). The study sample should be described in sufficient detail so that other researchers can determine if it is comparable to the population of interest to them

3. Did the study have consecutive inclusion of participants for case series and cohort studies? Did the study use probability sampling for cross-sectional studies?

Inclusion of consecutive participants for case series and cohort studies yields results at lower risk of bias compared to other sampling methods for these study designs. Use of probability-based sampling methods for cross-sectional studies yields estimates at lower risk of bias compared to other sampling methods for this design. Studies that indicate a consecutive inclusion are more reliable than those that do not. For example, a case series that states ‘we included all patients (24) with osteosarcoma who presented to our clinic between March 2005 and June 2006’ is more reliable than a study that simply states ‘we report a case series of 24 people with osteosarcoma.’

4. Was the response rate adequate, and if not, was the low response rate managed appropriately?

A large number of dropouts, refusals or “not founds” amongst selected subjects may diminish a study’s validity, as can a low response rates for survey studies. The authors should clearly discuss the response rate and any reasons for non-response and compare persons in the study to those not in the study, particularly with regards to their socio-demographic characteristics. If reasons for non-response appear to be unrelated to the outcome measured and the characteristics of non-responders are

comparable to those who do respond in the study, the researchers may be able to justify a more modest response rate.

5. Was the sample size adequate?

The larger the sample, the narrower will be the confidence interval around the prevalence estimate, making the results more precise. An adequate sample size is important to ensure good precision of the final estimate. The sample size threshold was calculated as follows:

$$n^* = z^2 \sigma / d^2$$

where n^* is the sample size threshold, z is the z-score for the level of confidence (95%), σ is the standard deviation (assumed to be 3 log₁₀ copies/ml, a fourth of the full range of rVLs) and d is the marginal error (assumed to be 1 log₁₀ copies/ml, based on the minimum detection limit for qRT-PCR across studies). This item was met if $\geq 75\%$ of the included DFSO had ≥ 46 specimen measurements.

6. Were valid methods used for the identification of the condition?

Many health problems are not easily diagnosed or defined and some measures may not be capable of including or excluding appropriate levels or stages of the health problem. If the outcomes were assessed based on existing definitions or diagnostic criteria, then the answer to this question is likely to be yes. If the outcomes were assessed using observer reported, or self-reported scales, the risk of over- or under-reporting is increased, and objectivity is compromised. Importantly, determine if the measurement tools used were validated instruments as this has a significant impact on outcome assessment validity.

7. Were standard, valid methods used for measurement of the exposure?

The study should clearly describe the method of measurement of exposure. Assessing validity requires that a 'gold standard' is available to which the measure can be compared. The validity of exposure measurement usually relates to whether a current measure is appropriate or whether a measure of past exposure is needed.

In this study, standard methods to measure viral load in respiratory specimens are RT-PCR quantifying via one of the standard genes for each virus.

8. Was the exposure measured in an objective, reliable way for all participants?

The study should clearly describe the procedural aspects of the measurement of exposure as well as factors that can contribute to heterogeneity in measurement.

In this study, objective, reliable interpretation of the exposure depends on the use of quantitative calibration; the specification of extraction; determination of the viral load as a standard metric (e.g., copies/ml or equivalent) or in a manner that can be converted to a standard metric; and, if present, specification of the amount of diluent (e.g., viral transport media) used.

9. Was there clear reporting of clinical information of the participants?

There should be clear reporting of clinical information of the participants such as the following information where relevant: disease status, comorbidities, stage of disease, previous interventions/treatment, results of diagnostic tests, etc.

In addition, there should be clear reporting of the number and types (asymptomatic, presymptomatic, symptomatic, adult, pediatric, hospitalized, non-hospitalized, community, etc.) of cases for measurements within the sampling periods of interest. For studies that include data outside of the infectious period, there should be clear reporting of clinical information for participants for the specimen measurements that were collected from within the infectious period.

10. Was statistical analysis appropriate?

As with any consideration of statistical analysis, consideration should be given to whether there was a more appropriate alternate statistical method that could have been used. The methods section of studies should be detailed enough for reviewers to identify which analytical techniques were used and whether these were suitable.

Risk of bias	
Low	The majority of critical appraisal criteria are met ($\geq 6/10$ items). The estimates are likely to be correct for the target population.
High	The majority of critical appraisal criteria are not met ($< 6/10$ items). This may impact on the validity and reliability of the estimates. The estimates may not be correct for the target population.
Unclear	The majority of items are unclear. There was insufficient information to assess the risk of bias.