

Derivation and validation of a clinical severity score for acutely ill adults with suspected COVID-19: The PRIEST observational cohort study

Steve Goodacre, Professor of Emergency Medicine, University of Sheffield, UK,

s.goodacre@sheffield.ac.uk

Ben Thomas, Study Manager, University of Sheffield, UK, b.d.thomas@sheffield.ac.uk

Laura Sutton, Statistician/Research Associate, University of Sheffield, UK, l.j.sutton@sheffield.ac.uk

Matthew Bursnall, Medical Statistician, University of Sheffield, UK, m.bursnall@sheffield.ac.uk

Ellen Lee, Statistician, University of Sheffield, UK, e.lee@sheffield.ac.uk

Mike Bradburn, Senior Medical Statistician, m.bradburn@sheffield.ac.uk

Amanda Loban, Head of Data Management, University of Sheffield, UK, a.loban@sheffield.ac.uk

Simon Waterhouse, Lead Data Specialist, University of Sheffield, UK, s.waterhouse@sheffield.ac.uk

Richard Simmonds, Data Management/Information Systems Officer, University of Sheffield, UK,

r.p.simmonds@sheffield.ac.uk

Katie Biggs, Assistant Director, University of Sheffield, UK, c.e.biggs@sheffield.ac.uk

Carl Marincowitz, Clinical Lecturer in Emergency Medicine , University of Sheffield, UK,

c.marincowitz@sheffield.ac.uk

Jose Schutter, Research Assistant, University of Sheffield, UK, j.schutter@sheffield.ac.uk

Sarah Connelly, Research Assistant, University of Sheffield, UK, s.l.connelly@sheffield.ac.uk

Elena Sheldon, Research Assistant, University of Sheffield, UK, e.m.sheldon@sheffield.ac.uk

Jamie Hall, Research Assistant, University of Sheffield, UK, jamie.hall@sheffield.ac.uk

Emma Young, Research Assistant, University of Sheffield, UK, e.l.young@sheffield.ac.uk

Andrew Bentley, Consultant in ICM & Respiratory Medicine, Manchester University NHS Foundation Trust, Wythenshawe Hospital, UK, andrew.bentley@manchester.ac.uk

Kirsty Challen, Consultant in Emergency Medicine, Lancashire Teaching Hospitals NHS Foundation Trust, UK, kirsty.challen@lthtr.nhs.uk

Chris Fitzsimmons, Consultant in Paediatric Emergency Medicine, Sheffield Children's NHS Foundation Trust, UK, c.fitzsimmons@nhs.net

Tim Harris, Professor of Emergency Medicine, Barts Health NHS Trust, UK,

Tim.Harris@bartshhealth.nhs.uk

Fiona Lecky, Clinical Professor in Emergency Medicine, University of Sheffield, UK,

f.e.lecky@sheffield.ac.uk

It is made available under a [CC-BY 4.0 International license](#) .

Andrew Lee, Reader of Global Public Health, University of Sheffield, UK, andrew.lee@sheffield.ac.uk

Ian Maconochie, Consultant in Paediatric Emergency Medicine, Imperial College Healthcare NHS Trust, UK, i.maconochie@ic.ac.uk

Darren Walter, Consultant in Emergency Medicine, Manchester University NHS Foundation Trust, UK, darren.walter@manchester.ac.uk

Corresponding author:

Steve Goodacre, School of Health and Related Research (SchARR), University of Sheffield, Regent Court, Regent Street, Sheffield, S10 1UL

s.goodacre@sheffield.ac.uk

ORCID ID: 0000-0003-0803-8444

Word count: 3161

Abstract

Objectives

We aimed to derive and validate a triage tool, based on clinical assessment alone, for predicting adverse outcome in acutely ill adults with suspected COVID-19 infection.

Methods

We undertook a mixed prospective and retrospective observational cohort study in 70 emergency departments across the United Kingdom (UK). We collected presenting data from 22445 people attending with suspected COVID-19 between 26 March 2020 and 28 May 2020. The primary outcome was death or organ support (respiratory, cardiovascular, or renal) by record review at 30 days. We split the cohort into derivation and validation sets, developed a clinical score based on the coefficients from multivariable analysis using the derivation set, and the estimated discriminant performance using the validation set.

Results

We analysed 11773 derivation and 9118 validation cases. Multivariable analysis identified that age, sex, respiratory rate, systolic blood pressure, oxygen saturation/inspired oxygen ratio, performance status, consciousness, history of renal impairment, and respiratory distress were retained in analyses restricted to the ten or fewer predictors. We used findings from multivariable analysis and clinical judgement to develop a score based on the NEWS2 score, age, sex, and performance status. This had a c-statistic of 0.80 (95% confidence interval 0.79-0.81) in the validation cohort and predicted adverse outcome with sensitivity 0.98 (0.97-0.98) and specificity 0.34 (0.34-0.35) for scores above four points.

Conclusion

A clinical score based on NEWS2, age, sex, and performance status predicts adverse outcome with good discrimination in adults with suspected COVID-19 and can be used to support decision-making in emergency care.

Registration

ISRCTN registry, ISRCTN28342533, <http://www.isrctn.com/ISRCTN28342533>

Introduction

The initial management of acutely ill people with suspected COVID-19 involves assessing the risk of adverse outcome and the need for life-saving intervention, to then determine decisions around hospital admission and inpatient referral.[1-5] Triage tools can assist decision-making by combining information from clinical assessment in a structured manner to predict the risk of adverse outcome. They can take the form of a score that increases with the predicted risk of adverse outcome or a rule that categorises patients into groups according to their risk or their intended management. Inclusion of laboratory and radiological information can improve prediction but requires hospital attendance, increases emergency department (ED) length of stay, and increases the infection risk related to repeated patient contacts. An appropriate triage tool for suspected COVID-19 needs to be based on clinical assessment alone and applicable to people with suspected COVID-19.

We designed the Pandemic Influenza Triage in the Emergency Department (PAINTED) study following the 2009 H1N1 influenza pandemic to develop and evaluate triage tools in any future influenza pandemic.[6] We changed PAINTED to the Pandemic Respiratory Infection Emergency System Triage (PRIEST) study in January 2020 to address any pandemic respiratory infection, including COVID-19. The United Kingdom (UK) Department of Health and Social Care activated PRIEST on 20 March 2020 to develop and evaluate triage tools in the COVID-19 pandemic. Initial descriptive analysis of the PRIEST data showed that adults presenting to the ED with suspected COVID-19 have much higher rates of COVID-19 positivity, hospital admission and adverse outcome than children.[7] We therefore decided to undertake separate studies in adults and children, and only develop a new triage tools in adults, which we present here.

Evaluation of existing triage tools using the PRIEST study data suggested that CURB-65, [8] the National Early Warning Score version 2 (NEWS2) [9] and the Pandemic Modified Early Warning Score (PMEWS) [10] provide reasonable prediction for adverse outcome in suspected COVID-19 (c-statistics 0.75 to 0.77). [11] Scope therefore existed to develop a specific triage tool for COVID-19 with better prediction for adverse outcome.

Aims and objectives

We aimed to derive and validate a triage tool in the form of an illness severity score, based on clinical assessment alone, for predicting adverse outcome in acutely ill adults with suspected COVID-19 infection.

Methods

Design

We designed PRIEST as an observational study to collect standardised predictor variables recorded in the ED, which we would then use to derive and validate new tools for predicting adverse outcome up to 30 days after initial hospital presentation. The study did not involve any change to patient care. Hospital admission and discharge decisions were made according to usual practice, informed by local and national guidance.

Setting and population

We identified consecutive patients presenting to the ED of participating hospitals with suspected COVID-19 infection. Patients were eligible if they met the clinical diagnostic criteria [12] of fever ($\geq 37.8^{\circ}$ C) and acute onset of persistent cough (with or without sputum), hoarseness, nasal discharge or congestion, shortness of breath, sore throat, wheezing, or sneezing. This was determined on the basis of the assessing clinician recording that the patient had suspected COVID-19 or completing a standardised assessment form designed for suspected pandemic respiratory infection [6].

Interventions

For this study we planned to develop a triage tool in the form of an illness severity score based on clinical assessment and routine observations that any health care professional could use to rapidly estimate the risk of adverse outcome. The score would be based on a number of categorised variables, with points allocated to each category of each variable, which would then be summed to give a total score reflecting the predicted risk of adverse outcome. To enhance usability, we planned to (a) use a restricted number of variables, rather than all potentially predictive variables, and (b) categorise variables in accordance with currently used scores, unless there was clear evidence that these categories provided suboptimal prediction.

Data collection

Data collection was both prospective and retrospective. Participating EDs were provided with a standardised data collection form (Appendix 1) that included variables used in existing triage tools or considered to be potentially useful predictors of adverse outcome. Participating sites could adapt the form to their local circumstances, including integrating it into electronic or paper clinical records to facilitate prospective data collection, or using it as a template for research staff to retrospectively extract data from clinical records. We did not seek consent to collect data but information about the

study was provided in the ED and patients could withdraw their data at their request. Patients with multiple presentations to hospital were only included once, using data from the first presentation identified by research staff.

Outcome measurement

Research staff at participating hospitals reviewed patient records at 30 days after initial attendance and recorded outcomes using the follow-up form in Appendix 2. The primary outcome was death or major organ support (respiratory, cardiovascular, or renal) up to 30 days after initial attendance. Death and major organ support were also analysed separately as secondary outcomes. Our primary outcome definition reflected the need for triage tools to identify patients at risk of adverse outcome or requiring life-saving intervention to prevent adverse outcome. Respiratory support was defined as any intervention to protect the patient's airway or assist their ventilation, including non-invasive ventilation or acute administration of continuous positive airway pressure. It did not include supplemental oxygen alone or nebulised bronchodilators. Cardiovascular support was defined as any intervention to maintain organ perfusion, such as inotropic drugs, or invasively monitor cardiovascular status, such as central venous pressure or pulmonary artery pressure monitoring, or arterial blood pressure monitoring. It did not include peripheral intravenous cannulation or fluid administration. Renal support was defined as any intervention to assist renal function, such as haemofiltration, haemodialysis, or peritoneal dialysis. It did not include intravenous fluid administration.

Analysis

We randomly split the study population into derivation and validation cohorts by randomly allocating the participating sites to one or other cohort. We developed a score based on the prognostic value of predictor variables in multivariable analysis of the derivation cohort and expert judgements regarding clinical usability. Candidate predictors were combined in a multivariable regression with Least Absolute Shrinkage and Selection Operator (LASSO) using ten sample cross validation to select the model. The LASSO begins with a full model of candidate predictors and simultaneously performs predictor selection and penalisation during model development to avoid overfitting. The LASSO was performed twice: once where the number of predictors were unrestricted, and a second time when the LASSO was restricted to pick ten predictors. Fractional polynomials were used to model non-linear relationships for continuous variables.

We excluded cases from all analyses if age or outcome data were missing. We undertook three multivariable analyses, using different approaches to missing predictor variable data in the derivation cohort: (1) Complete case; (2) Multiple imputation using chained equations; (3) Deterministic imputation with missing predictor data assumed to be normal, where applicable. We did not consider any predictor with more than 50% missing data across the cohort for inclusion in the predictive model.

Clinical members of the research team reviewed the models and selected variables for inclusion in the triage tool, based on their prognostic value in the model, the clinical credibility of their association with adverse outcome, and their availability in routine clinical care. We categorised continuous variables, using recognised categories from existing scores where appropriate, while checking that categorisation reflected the relationship between the variable and adverse outcome in the derivation data. We then assigned integer values to each category of predictor variable, taking into account the points allocated to the category in existing scores, and the coefficient derived from a multivariable logistic regression model using categorised continuous predictors. This generated a composite clinical score in which risk of adverse outcome increased with the total score.

We applied the clinical score to the validation cohort, calculating diagnostic parameters at each threshold of the score, constructing a receiver-operating characteristic (ROC) curve, calculating the area under the ROC curve (c-statistic) and calculating the proportion with an adverse outcome at each level of the score. We used deterministic imputation to handle missing data in the validation cohort, assuming missing predictor variable data were normal, but excluding cases with more than a pre-specified number of predictor variables missing. We also undertook a complete case sensitivity analysis.

The sample size was dependent on the size and severity of the pandemic, but based on a previous study in the 2009 H1N1 influenza pandemic we estimated we would need to collect data from 20,000 patients across 40-50 hospitals to identify 200 with an adverse outcome, giving sufficient power for model derivation. In the event, the adverse outcome rate in adults was much higher in the COVID-19 pandemic, giving us adequate power to undertake derivation and validation of triage tools to predict all three outcomes.

Patient and public involvement

The Sheffield Emergency Care Forum (SECF) is a public representative group interested in emergency care research. [13] Members of SECF advised on the development of the PRIEST study and two members joined the Study Steering Committee. Patients were not involved in the recruitment to and conduct of the study. We are unable to disseminate the findings to study participants directly.

Ethical approval

The North West - Haydock Research Ethics Committee gave a favourable opinion on the PAINTED study on 25 June 2012 (reference 12/NW/0303) and on the updated PRIEST study on 23rd March 2020. The Confidentiality Advisory Group of the Health Research Authority granted approval to collect data without patient consent in line with Section 251 of the National Health Service Act 2006.

Results

The PRIEST study recruited 22485 patients from 70 EDs across 53 sites between 26 March 2020 and 28 May 2020. We included 20889 in the analysis after excluding 39 who requested withdrawal of their data, 1530 children, 20 with missing outcome data, and seven with missing age. The derivation cohort included 11773 patients and the validation cohort 9118. Table 1 shows the characteristics of the derivation and validation cohorts.

Table 1: Characteristics of the study population (derivation and validation cohorts)

Characteristic	Statistic/level	Derivation	Validation
Age (years)	N	11773	9118
	Mean (SD)	62.4 (19.9)	62.4 (19.5)
	Median (IQR)	64 (48,79)	64 (48,79)
Sex	Missing	137	56
	Male	5746 (49.4%)	4455 (49.2%)
	Female	5890 (50.6%)	4607 (50.8%)
Ethnicity	Missing/prefer not to say	1819	2379
	UK/Irish/other white	8376 (84.1%)	5867 (87.1%)
	Asian	699 (7%)	345 (5.1%)
	Black/African/Caribbean	368 (3.7%)	272 (4%)
	Mixed/multiple ethnic groups	178 (1.8%)	69 (1%)
	Other	333 (3.3%)	186 (2.8%)
Presenting features	Cough	7248 (61.6%)	5737 (62.9%)
	Shortness of breath	8570 (72.8%)	7000 (76.8%)
	Fever	5714 (48.5%)	4562 (50%)
Comorbidities	Hypertension	3627 (30.8%)	2807 (30.8%)
	Heart Disease	2512 (21.3%)	2188 (24%)
	Diabetes	2394 (20.3%)	1735 (19%)

It is made available under a [CC-BY 4.0 International license](https://creativecommons.org/licenses/by/4.0/) .

Characteristic	Statistic/level	Derivation	Validation
	Asthma	1867 (15.9%)	1541 (16.9%)
	Other chronic lung disease	2047 (17.4%)	1717 (18.8%)
	Renal impairment	1074 (9.1%)	856 (9.4%)
	Active malignancy	577 (4.9%)	543 (6%)
	Immunosuppression	312 (2.7%)	319 (3.5%)
	Steroid therapy	303 (2.6%)	254 (2.8%)
	No chronic disease	3385 (28.8%)	2406 (26.4%)
Symptom duration (days)	N	10790	8087
	Mean (SD)	8.1 (9.1)	7.6 (8.6)
	Median (IQR)	5 (2,10)	5 (2,10)
Heart rate (beats/min)	N	11506	8954
	Mean (SD)	94.7 (21.5)	95.2 (21.7)
	Median (IQR)	93 (80,108)	94 (80,109)
Respiratory rate (breaths/min)	N	11438	8908
	Mean (SD)	23.1 (6.9)	23.4 (7.1)
	Median (IQR)	22 (18,26)	22 (18,26)
Systolic BP (mmHg)	N	11423	8875
	Mean (SD)	134.5 (24.9)	134.8 (25)
	Median (IQR)	133 (118,149)	133 (118,150)
Diastolic BP (mmHg)	N	11373	8839
	Mean (SD)	78.3 (15.8)	78.2 (16.5)
	Median (IQR)	78 (68,88)	78 (68,88)
Temperature (°C)	N	11307	8924
	Mean (SD)	37.1 (1.1)	37.2 (1.1)
	Median (IQR)	37 (36.4,37.8)	37 (36.5,37.9)
Oxygen saturation (%)	N	11658	8974
	Mean (SD)	94.9 (6.2)	94.4 (7.5)
	Median (IQR)	96 (94,98)	96 (94,98)
Air or supplementary oxygen	Missing	4113	4735
	On air	5243 (68.4%)	2544 (58%)
	On supplementary oxygen	2417 (31.6%)	1839 (42%)
Supplementary inspired oxygen (%)	N	2417	1839
	Mean (SD)	45.9 (21.9)	48.6 (22.5)
	Median (IQR)	36 (28,60)	36 (28,80)
Glasgow Coma Scale	N	8627	6801
	Mean (SD)	14.6 (1.4)	14.6 (1.4)
	Median (IQR)	15 (15,15)	15 (15,15)
Consciousness	Missing	1515	872
	Alert	9774 (95.3%)	7794 (94.5%)
	Verbal	333 (3.2%)	307 (3.7%)
	Pain	101 (1%)	82 (1%)
	Unresponsive	50 (0.5%)	63 (0.8%)
Performance status	Missing	620	458

Characteristic	Statistic/level	Derivation	Validation
	1. Unrestricted normal activity	5989 (53.7%)	4547 (52.5%)
	2. Limited strenuous activity, can do light activity	1315 (11.8%)	1056 (12.2%)
	3. Limited activity, can self-care	1565 (14%)	1211 (14%)
	4. Limited self-care	1494 (13.4%)	1155 (13.3%)
	5. Bed/chair bound, no self-care	790 (7.1%)	691 (8%)
Admitted at initial assessment	Missing	7	21
	No	3744 (31.8%)	3122 (34.3%)
	Yes	8022 (68.2%)	5975 (65.7%)
Respiratory pathogen	COVID-19	3660 (31.1%)	2861 (31.4%)
	Influenza	2 (0%)	25 (0.3%)
	Other	912 (7.7%)	809 (8.9%)
	None identified	7199 (61.1%)	5423 (59.5%)
Mortality status	Missing	0	3
	Alive	10002 (85%)	7640 (83.8%)
	Dead	1771 (15%)	1475 (16.2%)
	Death with organ support*	326 (18.4%)	367 (24.9%)
	Death with no organ support*	1445 (81.6%)	1108 (75.1%)
Organ support	Respiratory	939 (8%)	1005 (11%)
	Cardiovascular	316 (2.7%)	201 (2.2%)
	Renal	104 (0.9%)	114 (1.3%)
	Any	999 (8.5%)	1059 (11.6%)

Table 2 shows summary statistics for each predictor variable in those with and without adverse outcome in the derivation sample, and univariate odds ratios for prediction of adverse outcome. Physiological variables were categorised to reflect their expected relationships with adverse outcome.

Table 2: Univariate analysis of predictor variables for each adverse outcome definition (derivation cohort)

Predictor Variable	Category (categorical variables)	n (outcome)		Odds ratio	p-value	95% CI
		Adverse	Non adverse			
Age (n=11773)				1.04	0.00	(1.04, 1.04)
Ethnicity Category (n=9954)	Ref=UK/Irish/other white	1767	6609			
	Asian	138	561	0.92	0.399	(0.76, 1.12)
	Black/African/Caribbean	72	296	0.91	0.481	(0.70, 1.18)
	Mixed/multiple ethnic groups	28	150	0.70	0.084	(0.46, 1.05)
	Other	39	294	0.50	0.000	(0.35, 0.70)

It is made available under a [CC-BY 4.0 International license](https://creativecommons.org/licenses/by/4.0/) .

Shortness of breath (n=11746)	Ref=No	536	2640			
	Yes	1896	6674	1.40	0.000	(1.26, 1.56)
Cough (n=11746)	Ref=No	1065	3433			
	Yes	1367	5881	0.75	0.000	(0.68, 0.82)
Fever (n=11746)	Ref=No	1274	4758			
	Yes	1158	4556	0.95	0.253	(0.87, 1.04)
Hypertension (n=11732)	Ref=No	1445	6660			
	Yes	995	2632	1.74	0.000	(1.59, 1.91)
Heart Disease (n=11732)	Ref=No	1680	7540			
	Yes	760	1752	1.95	0.000	(1.76, 2.15)
Diabetes (n=11732)	Ref=No	1733	7605			
	Yes	707	1687	1.84	0.000	(1.66, 2.04)
Asthma (n=11732)	Ref=No	2143	7722			
	Yes	297	1570	0.68	0.000	(0.60, 0.78)
Other chronic lung disease (n=11732)	Ref=No	1919	7766			
	Yes	521	1526	1.38	0.000	(1.24, 1.54)
Renal impairment (n=11732)	Ref=No	2051	8607			
	Yes	389	685	2.38	0.000	(2.09, 2.72)
Active malignancy (n=11732)	Ref=No	2248	8907			
	Yes	192	385	1.98	0.000	(1.65, 2.36)
Immunosuppression (n=11732)	Ref=No	2360	9060			
	Yes	80	232	1.32	0.033	(1.02, 1.71)
Steroid therapy (n=11732)	Ref=No	2363	9066			
	Yes	77	226	1.31	0.046	(1.01, 1.70)
Symptom duration (n=10790)				0.97	0.000	(0.96, 0.98)
Number current medications (n=11183)				1.09	0.00	(1.08, 1.10)

It is made available under a [CC-BY 4.0 International license](https://creativecommons.org/licenses/by/4.0/) .

Respiratory rate (n=11773)	Ref=12-20 or missing	644	5061			
	<9	3	5	4.72	0.034	(1.12, 19.78)
	9-11	3	8	2.95	0.111	(0.78, 11.14)
	21-24	581	2191	2.08	0.000	(1.84, 2.36)
	>24	1213	2064	4.62	0.000	(4.14, 5.15)
Systolic Blood Pressure (n=11773)	Ref=111-219 or missing	1860	8093			
	101-110	269	745	1.57	0.000	(1.35, 1.82)
	91-100	170	320	2.31	0.000	(1.91, 2.80)
	<91	137	143	4.17	0.000	(3.28, 5.30)
	>219	8	28	1.24	0.588	(0.57, 2.73)
Heart rate (n=11773)	Ref=51-90 or missing	1007	4353			
	<41	15	42	1.54	0.152	(0.85, 2.79)
	41-50	12	42	1.24	0.521	(0.65, 2.35)
	91-110	776	3112	1.08	0.159	(0.97, 1.20)
	111-130	450	1367	1.42	0.000	(1.25, 1.62)
	>130	184	413	1.93	0.000	(1.60, 2.32)
Temperature (n=11773)	Ref=36.1-38.0 or missing	1498	6747			
	35.1-36	245	958	1.15	0.067	(0.99, 1.34)
	38.1-39	446	1137	1.77	0.000	(1.56, 2.00)
	>39.0	166	386	1.94	0.000	(1.60, 2.34)
	<35.1	89	101	3.97	0.000	(2.97, 5.31)
GCS Total (n=8627)	Ref=Mild (13-15)	1551	6618			
	Moderate (9-12)	187	150	5.32	0.000	(4.26, 6.64)
	Severe (<=8)	73	48	6.49	0.000	(4.49, 9.38)
AVPU (n=10258)	Ref=Alert	1756	8018			
	Verbal	176	157	5.12	0.000	(4.10, 6.39)
	Pain	62	39	7.26	0.000	(4.85, 10.87)
	Unresponsive	32	18	8.12	0.000	(4.55, 14.49)
Performance status (n=11153)	Ref=Unrestricted normal activity	709	5280			
	Limited strenuous activity, can do light activity	268	1047	1.91	0.000	(1.63, 2.23)
	Limited activity, can self care	430	1135	2.82	0.000	(2.46, 3.23)
	Limited self care	560	934	4.47	0.000	(3.92, 5.09)
	Bed/chair bound, no self care	334	456	5.45	0.000	(4.64, 6.41)
Severe respiratory distress (n=11773)	Ref=No	2250	9184			
	Yes	194	145	5.46	0.000	(4.38, 6.81)

Respiratory exhaustion (n=11773)	Ref=No	2360	9227			
	Yes	84	102	3.22	0.000	(2.40, 4.31)
Severe dehydration (n=11773)	Ref=No	2373	9240			
	Yes	71	89	3.11	0.000	(2.27, 4.26)
Previous attendance (n=11773)	Ref=No	2160	8429			
	Yes	284	900	1.23	0.004	(1.07, 1.42)
Known contact with Covid-19 case (n=1177)	Ref=No	2175	8474			
	Yes	269	855	1.23	0.006	(1.06, 1.42)
Central capillary refill (n=2935)	Ref=Normal	486	2179			
	Abnormal	101	169	2.68	0.000	(2.05, 3.49)

Supplementary Tables 1 to 3 show the results of multivariable analysis using complete case analysis, multiple imputation and deterministic imputation. Unrestricted LASSO on multiply imputed data included more predictors, with a higher c-statistic for the model (0.85, 95% CI 0.84 to 0.86), than the LASSO on deterministically imputed data or complete cases (c-statistics both 0.83, 95% CI 0.82 to 0.84). When restricted, there were nine predictors that were retained by LASSO in all three analyses (age, sex, respiratory rate, systolic BP, oxygen saturation/inspired oxygen ratio, history of renal impairment, performance status, consciousness and respiratory distress). C-statistics for the restricted models using deterministic imputation and complete case analysis (0.82, 95% CI 0.81 to 0.83) were slightly lower than c-statistics for the respective unrestricted models.

We developed a score through the following steps:

1. Clinical review judged that the nine predictors are clinically credible; that age, sex, respiratory rate, systolic BP, consciousness, oxygen saturation and inspired oxygen are routinely recorded in administrative systems and early warning scores (although the ratio of oxygen saturation to inspired oxygen is not routinely recorded); and that many EDs routinely record a measure of performance status for suspected COVID-19 cases that could be mapped onto our scale.
2. We decided to include temperature and heart rate, as these are routinely recorded alongside other physiological variables in early warning scores, and added prognostic value in the full models.

3. We created categories for age based on the observed multivariate association between age and outcome in our data, and categories for respiratory rate, heart rate, oxygen saturation, inspired oxygen, systolic BP, consciousness and temperature based on those used in the NEWS2 early warning score.
4. We created a multivariable logistic regression model using categorised predictor variables (Supplementary Table 4) and compared the coefficients for each category of predictor variable in the NEWS2 score to the points allocated in the NEWS2 score. We judged that the inconsistencies between the coefficients and the points used in NEWS2 were insufficient to justify allocating alternative points in our score. We allocated points to categories of age, sex, performance status, renal history, and respiratory distress, based on the coefficients in the model.
5. We removed renal history and respiratory distress from the multivariable model (Supplementary Table 5), noted that this made no meaningful difference to the c-statistic (0.82 in both models) and, given concerns about subjectivity and lack of routine recording, decided not to include them in the score.

The developed score is shown in Figure 1. We applied the score to the validation cohort. Figure 2 shows the ROC curve, with a c-statistic of 0.80 (95% CI 0.79 to 0.81) for the score. Sensitivity analysis using only complete cases gave a c-statistic of 0.79 (95% CI 0.77 to 0.80). Supplementary Figures 1 and 2 show the calibration plots for the unrestricted and restricted LASSO models applied to the validation cohort. The c-statistics (0.82 and 0.81 respectively, compared with 0.80 for the score) indicate the effect of restricting the number of variables and then developing a score had upon discrimination. Figure 3 shows the probability of adverse outcome for each value of the score. Table 3 shows the sensitivity and specificity for predicting outcome at each threshold of the triage tool.

Table 3: Sensitivity, specificity, PPV, NPV and proportion with a positive score at each score threshold for predicting the primary outcome of death or organ support, validation cohort

Score threshold	Proportion with positive score	Sensitivity (95% CI)	Specificity (95% CI)	Positive predictive value (95% CI)	Negative predictive value (95% CI)
>0	0.97	1.00 (1.00, 1.00)	0.04 (0.03, 0.04)	0.25 (0.24, 0.25)	0.99 (0.98, 1.00)
>1	0.92	1.00 (1.00, 1.00)	0.10 (0.10, 0.10)	0.26 (0.25, 0.26)	0.99 (0.99, 0.99)
>2	0.87	0.99 (0.99, 0.99)	0.17 (0.17, 0.18)	0.27 (0.27, 0.28)	0.99 (0.98, 0.99)
>3	0.80	0.99 (0.98, 0.99)	0.26 (0.26, 0.27)	0.30 (0.29, 0.30)	0.98 (0.98, 0.99)
>4	0.73	0.98 (0.97, 0.98)	0.34 (0.34, 0.35)	0.32 (0.31, 0.32)	0.98 (0.98, 0.98)
>5	0.66	0.95 (0.95, 0.95)	0.43 (0.43, 0.43)	0.34 (0.34, 0.35)	0.96 (0.96, 0.97)

>6	0.59	0.91 (0.91, 0.91)	0.50 (0.50, 0.51)	0.37 (0.36, 0.37)	0.95 (0.94, 0.95)
>7	0.53	0.86 (0.85, 0.86)	0.58 (0.57, 0.58)	0.39 (0.39, 0.40)	0.93 (0.93, 0.93)
>8	0.46	0.80 (0.79, 0.80)	0.65 (0.64, 0.65)	0.42 (0.41, 0.42)	0.91 (0.91, 0.91)
>9	0.40	0.73 (0.72, 0.74)	0.71 (0.71, 0.71)	0.44 (0.44, 0.45)	0.89 (0.89, 0.90)
>10	0.33	0.65 (0.64, 0.66)	0.77 (0.77, 0.77)	0.47 (0.46, 0.48)	0.87 (0.87, 0.88)
>11	0.27	0.57 (0.56, 0.58)	0.82 (0.82, 0.82)	0.50 (0.49, 0.50)	0.86 (0.86, 0.86)
>12	0.21	0.47 (0.46, 0.48)	0.87 (0.87, 0.87)	0.53 (0.53, 0.54)	0.84 (0.84, 0.84)
>13	0.16	0.37 (0.37, 0.38)	0.91 (0.91, 0.91)	0.56 (0.55, 0.57)	0.82 (0.82, 0.82)
>14	0.12	0.29 (0.28, 0.30)	0.94 (0.93, 0.94)	0.59 (0.58, 0.60)	0.81 (0.80, 0.81)
>15	0.09	0.23 (0.22, 0.23)	0.96 (0.95, 0.96)	0.62 (0.61, 0.64)	0.80 (0.79, 0.80)
>16	0.06	0.17 (0.17, 0.18)	0.97 (0.97, 0.97)	0.65 (0.64, 0.67)	0.79 (0.79, 0.79)
>17	0.04	0.12 (0.11, 0.12)	0.98 (0.98, 0.98)	0.68 (0.66, 0.70)	0.78 (0.78, 0.78)
>18	0.03	0.08 (0.07, 0.08)	0.99 (0.99, 0.99)	0.67 (0.65, 0.69)	0.77 (0.77, 0.78)
>19	0.02	0.05 (0.04, 0.05)	0.99 (0.99, 1.00)	0.73 (0.70, 0.76)	0.77 (0.77, 0.77)
>20	0.01	0.03 (0.03, 0.03)	1.00 (1.00, 1.00)	0.76 (0.72, 0.79)	0.77 (0.76, 0.77)
>21	0.01	0.02 (0.02, 0.02)	1.00 (1.00, 1.00)	0.81 (0.76, 0.85)	0.76 (0.76, 0.77)
>22	0.00	0.01 (0.01, 0.01)	1.00 (1.00, 1.00)	0.84 (0.76, 0.90)	0.76 (0.76, 0.77)
>23	0.00	0.01 (0.00, 0.01)	1.00 (1.00, 1.00)	0.87 (0.76, 0.94)	0.76 (0.76, 0.76)
>24	0.00	0.00 (0.00, 0.00)	1.00 (1.00, 1.00)	0.86 (0.66, 0.96)	0.76 (0.76, 0.76)

Supplementary Figures 3 and 4 show the ROC curves, and Supplementary Tables 6 and 7 show the predictive performance of the score when applied to the secondary outcomes of organ support and death without organ support in the validation cohort. The score provided better prognostic discrimination for death without organ support (c-statistic 0.83, 95% CI 0.82 to 0.84) than for organ support (0.68, 95% CI 0.67 to 0.69).

Discussion

We have developed a clinical illness severity score for acutely ill patients with suspected COVID-19 that combines the NEWS2 score, age, sex, and performance status to predict the risk of death or receipt of organ support. The score ranges from zero to 29 points, with a score greater than four predicting adverse outcome with high sensitivity. In developing the score, we tried to optimise usability without compromising performance. Usability was optimised by basing the score on the existing NEWS2 score and only adding easily available information. The c-statistic of the score on the validation cohort was 0.80, compared with 0.82 and 0.81 when the unrestricted and restricted models were applied to the validation cohort, suggesting that simplifying the tool did not excessively compromise prediction.

We previously analysed the performance of triage tools that have been recommended in guidelines for the initial assessment of acutely ill people with sepsis, and showed that CURB-65 (c-statistic 0.75), PMEWS (0.77) and NEWS2 (0.77) offer good prediction for adverse outcome. Our new triage tool offers improved prediction with the addition of three variables.

Previous research

A living systematic review [14] has identified 50 prognostic models for adverse outcome in people with diagnosed COVID-19. C-statistics ranged from 0.68 to 0.99, and the most frequently used predictor variables were age, sex, comorbidities, temperature, lymphocyte count, C reactive protein, creatinine, and imaging features. Recently the ISARIC WHO Clinical Characterisation Protocol developed and validated the 4C Mortality Score [15] that predicts the mortality risk for people admitted with COVID-19 with better discriminant performance than 15 pre-existing risk stratification scores (c-statistic 0.77 versus 0.61-0.76).

Mortality prediction scores have an important role predicting mortality in hospital admissions but have limitations as triage tools. The inclusion of laboratory data as predictor variables usually requires hospital attendance, prolongs ED stay and prevents the rapid assessment required in ED or prehospital settings. Furthermore triage tools need to predict need for life-saving intervention rather than just mortality, and ideally need to be developed and evaluated in a relevant cohort, i.e. those with suspected COVID-19, including those not admitted to hospital after assessment.

Rapid clinical scores have been proposed or evaluated in several studies. Liao *et al* [16] proposed adding age>65 years to the NEWS2 score to aid decision-making, based on early experience of the pandemic in China. Myrstad *et al* [17] reported a c-statistic of 0.822 (95% CI 0.690 to 0.953) for NEWS2 predicting death or severe disease in a small study (N=66) of people hospitalised with confirmed COVID-19. Hu *et al* [18] reported c-statistics of 0.833 (0.737 to 0.928) for the Rapid Emergency Medicine Score (REMS) and 0.677 (0.541 to 0.813) for the Modified Emergency Medicine Score (MEWS) for predicting mortality in critically ill patients with COVID-19. Haimovich *et al* [19] developed the quick COVID-19 severity index, consisting of respiratory rate, oxygen saturation, and oxygen flow rate, which predicted respiratory failure within 24 hours in adults admitted with COVID-19 requiring supplemental oxygen with a c-statistic of 0.81 (0.73 to 0.89).

Strengths and limitations

We collected data from a clinically relevant population of patients presenting with suspected COVID-19 across a varied range of EDs. The large sample size and high rate of adverse outcome provided good statistical power to support analysis of many predictor variables in multivariable analysis and allowed us to estimate parameters with a high degree of precision. An important limitation is that retrospective data collection resulted in some missing and may have resulted in some inaccuracy of predictor variable recording. Recording of inspired oxygen concentration was subject to a particularly high rate of missing data. We anticipated this problem and pre-specified analyses involving multiple imputation, deterministic imputation, and complete case analysis to explore the impact of missing data. There was reasonable concordance between the models. Another potential limitation is that we may have missed adverse outcomes if patients attended a different hospital after initial hospital discharge. This is arguably less likely in the context of a pandemic, in which movements between regions were curtailed, but cannot be discounted. The 5-point scale we used for determining performance status has not been widely used or evaluated, although the 9-point clinical frailty index maps onto it reasonably well. Finally, although our triage tool can be used in the prehospital or community setting, we recommend caution in extrapolating our findings to settings where there is likely to be a lower prevalence of adverse outcome.

Implications for practice

Our clinical score could be used to support ED decision-making around hospital admission and inpatient referral. A score greater than four could provide an appropriate balance of sensitivity and specificity to support hospital admission decisions, while a higher threshold could be used to select patients for critical care referral. However, triage tools should support and not replace clinical decision-making, and patient preferences and values must be considered. Our triage tool could also be used to support prehospital and community decision-making around decisions to refer for hospital assessment. However, further validation is required to determine the performance of the tool in these settings.

In summary, we have developed a clinical score that can provide a rapid and accurate assessment of the risk of adverse outcome in adults who are acutely ill with suspected COVID-19.

Competing interests

All authors have completed the ICMJE uniform disclosure form at www.icmje.org/coi_disclosure.pdf and declare: grant funding to their employing institutions from the National Institute for Health Research; no financial relationships with any organisations that might have an interest in the

submitted work in the previous three years; no other relationships or activities that could appear to have influenced the submitted work.

Contributor and guarantor information

SG, AB, KC, CF, TH, FL, ALe, IM and DW conceived and designed the study. BT, KB, ALo, SW, RS, JS, SC, ES, JH and EY acquired the data. LS, MBu, MBr, EL, SG and BT analysed the data. SG, LS, MBu, MBr, ES, AB, KC, CF, TH, FL, ALe, IM, DW, BT, KB and CM interpreted the data. All authors contributed to drafting the manuscript. Steve Goodacre is the guarantor of the paper. The corresponding author attests that all listed authors meet authorship criteria and that no others meeting the criteria have been omitted.

Acknowledgements

We thank Katie Ridsdale for clerical assistance with the study, Erica Wallis (Sponsor representative, all members of the Study Steering Committee (Appendix 3) and the site research teams who delivered the data for the study (Appendix 4), and the research team at the University of Sheffield past and present (Appendix 5).

Data sharing

Anonymised data are available from the corresponding author upon reasonable request (contact details on first page).

Role of the funding source

The PRIEST study was funded by the United Kingdom National Institute for Health Research Health Technology Assessment (HTA) programme (project reference 11/46/07). The funder played no role in the study design; in the collection, analysis, and interpretation of data; in the writing of the report; and in the decision to submit the article for publication. The views expressed are those of the authors and not necessarily those of the NHS, the NIHR or the Department of Health and Social Care.

References

1. World Health Organisation. Clinical care of severe acute respiratory infections – Tool kit. <https://www.who.int/publications-detail/clinical-care-of-severe-acute-respiratory-infections-tool-kit> (accessed 28/04/2020)

2. International Federation for Emergency Medicine. Global Response to COVID-19 for Emergency Healthcare Systems and Providers: From the IFEM Task Force on ED Crowding and Access Block. <https://www.ifem.cc/coronavirus-2019-information/> (accessed 15/06/2020)
3. NHS. Clinical guide for the management of emergency department patients during the coronavirus pandemic. 17 March 2020 Version 1
<https://www.england.nhs.uk/coronavirus/secondary-care/other-resources/specialty-guides/#ae> (accessed 15/06/2020)
4. National Institute for Health and Care Excellence. COVID-19 rapid guideline: managing suspected or confirmed pneumonia in adults in the community. Published: 3 April 2020. www.nice.org.uk/guidance/ng165 (accessed 28/04/2020)
5. American College of Emergency Physicians. Guide to Coronavirus Disease (COVID-19)
<https://www.acep.org/corona/covid-19-field-guide/cover-page/>
6. Goodacre S, Irving A, Wilson R, Beever D, Challen K. The PAndemic INfluenza Triage in the Emergency Department (PAINTED) pilot cohort study. *Health Technol Assess* 2015;19(3):1-70.
7. Goodacre S, Thomas B, Lee E, et al. Characterisation of 22446 patients attending UK emergency departments with suspected COVID-19 infection: Observational cohort study [Preprint]. medRxiv 2020.08.10.20171496
<https://www.medrxiv.org/content/10.1101/2020.08.10.20171496v1>
8. Lim W, van der Eerden MM, Laing R, Boersma W, Karalus N, Town G, Lewis S, Macfarlane J. Defining community acquired pneumonia severity on presentation to hospital: an international derivation and validation study. *Thorax* 2003; 58(5): 377–382.
9. Royal College of Physicians. (2017). National Early Warning Score (NEWS) 2: Standardising the assessment of acute-illness severity in the NHS. Updated report of a working party. London: RCP.
10. Challen K, Bright J, Bentley A, Walter D. Physiological-social score (PMEWS) vs. CURB-65 to triage pandemic influenza: a comparative validation study using community-acquired pneumonia as a proxy. *BMC Health Serv Res.* 2007; 7: 33.
11. Thomas B, Biggs K Goodacre S, et al. Prognostic accuracy of emergency department triage tools for adults with suspected COVID-19: The PRIEST observational cohort study. [Preprint] medRxiv 2020.09.01.20185793;
<https://www.medrxiv.org/content/10.1101/2020.09.02.20185892v1>

12. Public Health England. COVID-19: investigation and initial clinical management of possible cases. <https://www.gov.uk/government/publications/wuhan-novel-coronavirus-initial-investigation-of-possible-cases/investigation-and-initial-clinical-management-of-possible-cases-of-wuhan-novel-coronavirus-wn-cov-infection#criteria> (accessed 27/04/2020)
13. Hirst E, Irving A, Goodacre S. Patient and public involvement in emergency care research. *Emerg Med J* 2016;33:665–670.
14. Wynants Laure, Van Calster Ben, Collins Gary S, Riley Richard D, Heinze Georg, Schuit Ewoud et al. Prediction models for diagnosis and prognosis of covid-19: systematic review and critical appraisal *BMJ* 2020; 369 :m1328
15. Knight Stephen R, Ho Antonia, Pius Riinu, Buchan Iain, Carson Gail, Drake Thomas M et al. Risk stratification of patients admitted to hospital with covid-19 using the ISARIC WHO Clinical Characterisation Protocol: development and validation of the 4C Mortality Score *BMJ* 2020; 370 :m3339
16. Liao X, Wang B Kang Y. Novel coronavirus infection during the 2019–2020 epidemic: preparing intensive care units—the experience in Sichuan Province, China. *Intensive Care Med* 46, 357–360 (2020).
17. Myrstad M, Ihle-Hansen H, Tveita AA, Andersen EL, Nygård S, Tveit A, Berge T. National Early Warning Score 2 (NEWS2) on admission predicts severe disease and inhospital mortality from Covid-19 – a prospective cohort study. *Scandinavian Journal of Trauma, Resuscitation and Emergency Medicine* 2020; 28:66.
18. Hu H, Yao N, Qiu Y. Comparing Rapid Scoring Systems in Mortality Prediction of Critically Ill Patients With Novel Coronavirus Disease. *Acad Emerg Med*. 2020;27(6):461-468.
19. Haimovich A, Ravindra NG, Stoytchev S, Young HP, PerryWilson F, van Dijk D, Schulz WL, Taylor RA, Development and validation of the quick COVID-19 severity index (qCSI): a prognostic tool for early clinical decompensation *Annals of Emergency Medicine* (2020), doi: <https://doi.org/10.1016/j.annemergmed.2020.07.022>.

Figure 1: The PRIEST COVID-19 clinical severity score

Variable	Range	Score
Respiratory rate (per minute)	12-20	0
	9-11	1
	21-24	2
	<9 or >24	3
Oxygen saturation (%)	>95	0
	94-95	1
	92-93	2
	<92	3
Heart rate (per minute)	51-90	0
	41-50 or 91-110	1
	111-130	2
	<41 or >130	3
Systolic BP (mmHg)	111-219	0
	101-110	1
	91-100	2
	<91 or >219	3
Temperature (°C)	36.1-38.0	0
	35.1-36.0 or 38.1-39.0	1
	>39.0	2
	<35.1	3
Alertness	Alert	0
	Confused or not alert	3
Inspired oxygen	Air	0
	Supplemental oxygen	2
Sex	Female	0
	Male	1
Age (years)	16-49	0
	50-65	2
	66-80	3
	>80	4
Performance status	Unrestricted normal activity	0
	Limited strenuous activity, can do light activity	1
	Limited activity, can self-care	2
	Limited self-care	3
	Bed/chair bound, no self-care	4

Figure 2: ROC curve for the tool predicting the primary outcome of death or organ support, validation cohort

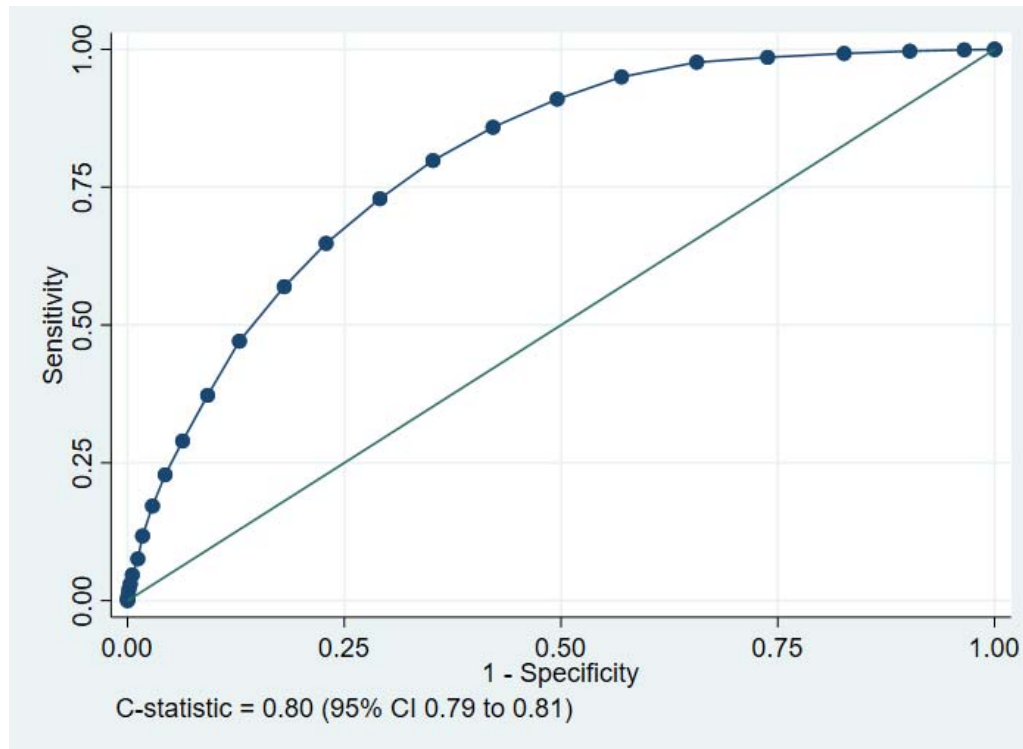
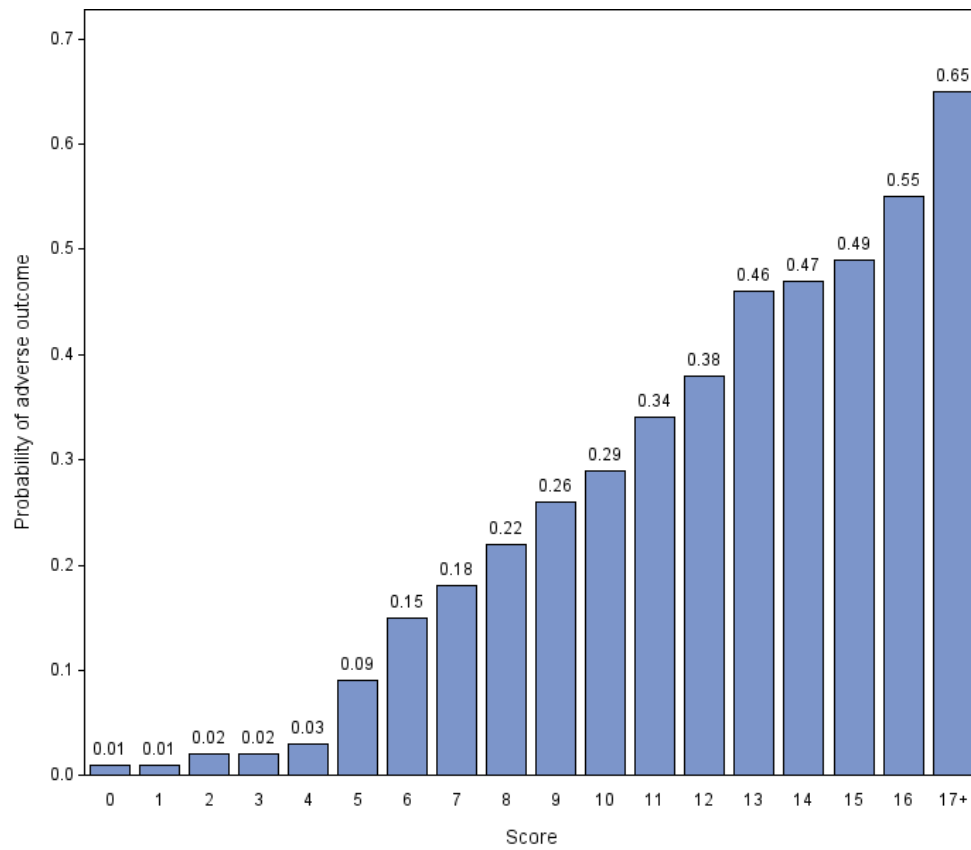


Figure 3: Probability of adverse outcome for each value of the score, validation cohort



Supplementary Table 1: Multivariable analysis, complete case (N=5988)

Lasso variable selection (unrestricted)			Lasso variable selection (restricted to 10)		
C-statistic: 0.83 (95% CI 0.82 to 0.84)			C-statistic: 0.82		
Parameter	Coefficient		Parameter	Coefficient	
	Unstandardised	Standardised		Unstandardised	Standardised
Age	0.019	0.373	Age	0.014	0.28
Symptom duration	-0.002	-0.016	ln(respiratory rate)	0.895	0.239
ln(respiratory rate)	1.129	0.302	Systolic BP ⁻²	4851.16	0.122
Heart rate	0.002	0.034	Oxygen saturation/inspired ratio	-0.005	-0.581
ln(temperature)*temperature ³	0	0.072	Medication count	0.004	0.018
Systolic BP ⁻²	9458.016	0.238	Male sex	0.023	0.012
Oxygen saturation/inspired ratio	-0.006	-0.617	Renal impairment	0.037	0.011
Medication count	0.017	0.075	Performance status level 1	-0.082	-0.041
Male sex	0.31	0.155	Respiratory distress	0.08	0.015
Shortness of breath	0.112	0.049	Consciousness alert	-0.44	-0.114
Renal impairment	0.287	0.083	Constant	-2.967	-1.468
Asthma	-0.026	-0.009			
Diabetes	0.137	0.056			
Active malignancy	0.058	0.013			
Immunosuppression	0.111	0.019			
Other chronic lung disease	-0.039	-0.015			
Hypertension	0.03	0.014			
Clinically obese	0.196	0.051			
Tobacco or vape user	-0.202	-0.061			
Covid contact	0.197	0.06			
Performance status					
1	-0.149	-0.074			
2	-0.187	-0.061			
4	0.112	0.039			
5	0.061	0.015			
Respiratory distress	0.46	0.084			
Respiratory exhaustion	0.296	0.041			
Dehydration	0.683	0.086			
Consciousness					
Alert	-0.537	-0.138			
Pain	0.551	0.059			
Unresponsive	0.167	0.011			
Constant	-5.446	-1.623			

Supplementary Table 2: Multivariable analysis, using multiple imputation (50 imputations; N=11636)

Lasso variable selection (unrestricted)				Lasso variable selection (restricted to 10)			
C-statistic: 0.85 (95% CI 0.84 to 0.86)				C-statistic: 0.85 (95% CI 0.84 to 0.85)			
Parameter	Average coefficient		No. times selected	Parameter	Average coefficient		No. times selected
	Unstandardised	Standardised			Unstandardised	Standardised	
Age	0.021	0.428	50	Age	0.017	0.333	50
Symptom duration	-0.006	-0.054	50	ln(respiratory rate)	1.060	0.280	50
ln(respiratory rate)	1.313	0.347	50	Systolic BP ⁻²	4400.528	0.111	50
Heart rate	0.002	0.034	50	Oxygen saturation/inspired ratio	-0.006	-0.605	50
ln(temp)*temp ³	0.000	0.029	50	Male sex	0.030	0.015	50
Systolic BP ⁻²	8662.087	0.219	50	Renal impairment	0.065	0.019	50
Oxygen saturation/inspired ratio	-0.006	-0.647	50	Performance status			
Medication count	0.008	0.036	50	1	-0.188	-0.094	50
Male sex	0.309	0.155	50	4	0.045	0.015	50
Shortness of breath	0.199	0.088	50	Respiratory distress	0.154	0.026	50
Previous attendance	0.057	0.017	50	Consciousness alert	-0.525	-0.138	50
Heart disease	-0.046	-0.019	50				
Renal impairment	0.306	0.088	50	<i>Performance status level 5</i>	0.021	0.005	48
Asthma	-0.118	-0.043	50	<i>Medication count</i>	0.001	0.004	8
Diabetes	0.176	0.071	50	<i>Diabetes</i>	0.005	0.002	5
Active malignancy	0.294	0.064	50				
Immunosuppression	0.301	0.049	50	Constant	-3.477	-1.598	50
Other chronic lung disease	-0.088	-0.034	50				
Hypertension	0.071	0.033	50				
Clinically obese	0.276	0.067	50				
Tobacco or vape user	-0.265	-0.081	50				
Covid contact	0.200	0.059	50				
Performance status							
1	-0.214	-0.107	50				
2	-0.167	-0.054	50				
4	0.226	0.077	50				
5	0.249	0.064	50				
Respiratory distress	0.488	0.082	50				
Respiratory exhaustion	0.449	0.056	50				
Dehydration	0.490	0.057	50				
Consciousness							
Alert	-0.630	-0.165	50				
Pain	0.312	0.033	50				
Unresponsive	0.424	0.033	50				

It is made available under a [CC-BY 4.0 International license](#) .

<i>Cough</i>	0.014	0.007	38				
<i>Pregnant</i>	-0.059	-0.004	11				
<i>Steroid use</i>	-0.019	-0.003	6				
<i>Fever</i>	-0.011	-0.005	3				
Constant	-5.596	-1.777	50				

Supplementary Table 3: Multivariable analysis, using deterministic imputation (N=9891)

Lasso variable selection (unrestricted) C-statistic: 0.83 (95% CI 0.82 to 0.84)			Lasso variable selection (restricted to 10) C-statistic: 0.82 (95% CI 0.81 to 0.83)		
Parameter	Coefficient		Parameter	Coefficient	
	Unstandardised	Standardised		Unstandardised	Standardised
Age	0.023	0.45	Age	0.017	0.349
Symptom duration	-0.004	-0.039	ln(respiratory rate)	1.219	0.318
ln(respiratory rate)	1.479	0.385	Systolic BP ⁻²	4989.762	0.122
Heart rate	0.003	0.055	Oxygen saturation/inspired ratio	-0.005	-0.481
ln(temperature)*temperature ³	0	0.008	Male sex	0.049	0.025
Systolic BP ⁻²	9572.929	0.235	Renal impairment	0.107	0.03
Oxygen saturation/inspired ratio	-0.005	-0.512	Performance status		
Medication count	0.001	0.006		1	-0.132
Male sex	0.329	0.164		4	0.04
Shortness of breath	0.184	0.081	Respiratory distress		0.041
Previous attendance	0.049	0.015	Consciousness alert		-0.484
Heart disease	-0.002	-0.001	Constant		-4.222
Renal impairment	0.355	0.101			
Steroid use	0.066	0.01			
Asthma	-0.136	-0.05			
Diabetes	0.198	0.079			
Active malignancy	0.317	0.067			
Immunosuppression	0.269	0.044			
Other chronic lung disease	-0.052	-0.02			
Hypertension	0.069	0.032			
Clinically obese	0.333	0.082			
Tobacco or vape user	-0.231	-0.071			
Covid contact	0.198	0.059			
Performance status					
	1	-0.149			
	2	-0.124			
	4	0.227			
	5	0.142			
Respiratory distress	0.37	0.062			
Respiratory exhaustion	0.468	0.06			
Dehydration	0.441	0.05			
Consciousness					
	Alert	-0.639			
	Pain	0.475			
	Unresponsive	0.288			
Constant	-6.219	-1.772			

Supplementary Table 4: Logistic regression model based on selected categorised predictor variables

Predictor	Score allocated	Coefficient	SE	z	P-value	Upper 95% CI	Lower 95% CI
Respiratory rate							
12-20*	0						
9-11	1	0.598	1.387	0.43	0.666	-2.121	3.317
21-24	2	0.330	0.089	3.69	0	0.155	0.505
<9 or >24	3	0.684	0.082	8.3	0	0.523	0.846
Oxygen saturation							
>95%*	0						
94-95%	1	0.361	0.090	4.02	0	0.185	0.537
92-93%	2	0.697	0.112	6.24	0	0.478	0.916
<92%	3	1.128	0.085	13.24	0	0.961	1.295
Heart rate							
51-90*	0						
41-50 or 91-110	1	-0.054	0.077	-0.7	0.486	-0.205	0.097
111-130	2	0.141	0.096	1.46	0.143	-0.048	0.329
<41 or >130	3	0.295	0.141	2.09	0.037	0.018	0.572
Systolic BP							
111-219*	0						
101-110	1	0.229	0.109	2.11	0.035	0.016	0.442
91-100	2	0.596	0.145	4.12	0	0.312	0.879
<91 or >219	3	0.599	0.163	3.67	0	0.279	0.918
Temperature							
36.1-38.0*	0						
35.1-36.0 or 38.1-39.0	1	0.261	0.074	3.5	0	0.115	0.407
>39.0	2	0.130	0.133	0.98	0.325	-0.130	0.390
<35.1	3	0.812	0.233	3.49	0	0.356	1.269
Consciousness not alert	3	0.402	0.083	4.87	0	0.240	0.564
Supplemental oxygen	2	1.205	0.068	17.82	0	1.073	1.338
Male sex	1	0.318	0.067	4.77	0	0.187	0.448
Age							
<50*	0						
50-65	2	0.718	0.121	5.94	0	0.481	0.955
66-80	3	0.792	0.123	6.45	0	0.551	1.033
>80	4	0.916	0.130	7.06	0	0.662	1.171
Performance status							

It is made available under a [CC-BY 4.0 International license](#) .

Level 1*	0						
Level 2	1	-0.071	0.113	-0.63	0.526	-0.292	0.149
Level 3	2	0.175	0.103	1.69	0.09	-0.027	0.377
Level 4	3	0.402	0.104	3.86	0	0.198	0.607
Level 5	4	0.615	0.123	5	0	0.374	0.856
Renal impairment	1	0.333	0.100	3.32	0.001	0.137	0.530
Respiratory distress	1	0.806	0.152	5.29	0	0.507	1.105
Constant		-3.798	0.126	-30.19	0	-4.045	-3.551

C-statistic 0.82 (95% CI 0.81 to 0.83)

*Reference category

Supplementary Table 5: Logistic regression model based on selected categorised predictor variables, excluding respiratory distress and history of renal impairment

Predictor	Score allocated	Coefficient	SE	z	P-value	Upper 95% CI	Lower 95% CI
Respiratory rate							
12-20*	0						
9-11	1	1.543	1.049	1.47	0.141	-0.512	3.599
21-24	2	0.334	0.089	3.74	0	0.159	0.508
<9 or >24	3	0.733	0.082	8.98	0	0.573	0.892
Oxygen saturation							
>95%*	0						
94-95%	1	0.355	0.089	3.96	0	0.179	0.530
92-93%	2	0.676	0.111	6.08	0	0.458	0.894
<92%	3	1.149	0.084	13.62	0	0.984	1.314
Heart rate							
51-90*	0						
41-50 or 91-110	1	-0.063	0.077	-0.82	0.415	-0.213	0.088
111-130	2	0.132	0.096	1.38	0.168	-0.056	0.319
<41 or >130	3	0.335	0.139	2.41	0.016	0.062	0.608
Systolic BP							
111-219*	0						
101-110	1	0.220	0.108	2.04	0.042	0.008	0.433
91-100	2	0.615	0.144	4.28	0	0.333	0.896
<91 or >219	3	0.618	0.162	3.82	0	0.300	0.935
Temperature							
36.1-38.0*	0						
35.1-36.0 or 38.1-39.0	1	0.259	0.074	3.49	0	0.113	0.404
>39.0	2	0.140	0.132	1.06	0.289	-0.118	0.398
<35.1	3	0.876	0.229	3.82	0	0.427	1.325
Consciousness not alert	3	0.397	0.082	4.84	0	0.236	0.558
Supplemental oxygen	2	1.232	0.067	18.34	0	1.100	1.363
Male sex	1	0.320	0.066	4.83	0	0.190	0.450
Age							
<50*	0						
50-65	2	0.734	0.120	6.11	0	0.498	0.969
66-80	3	0.813	0.122	6.66	0	0.574	1.053
>80	4	0.939	0.129	7.3	0	0.687	1.191
Performance status							

It is made available under a [CC-BY 4.0 International license](#) .

Level 1*	0						
Level 2	1	-0.057	0.112	-0.51	0.612	-0.276	0.163
Level 3	2	0.212	0.102	2.08	0.038	0.012	0.411
Level 4	3	0.437	0.104	4.22	0	0.234	0.640
Level 5	4	0.660	0.122	5.4	0	0.420	0.899
Constant		-3.792	0.125	-30.31	0	-4.037	-3.547

C-statistic 0.82 (95% CI 0.81 to 0.83)

*Reference category

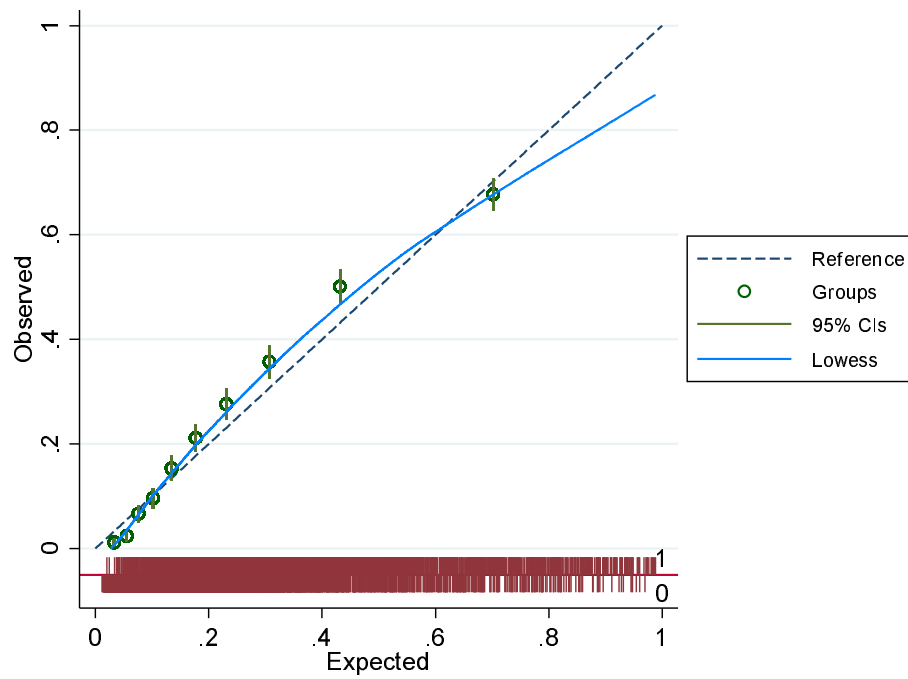
Supplementary Table 6: Sensitivity, specificity, PPV, NPV at each score threshold for predicting the secondary outcome of organ support, validation cohort

Score threshold	Sensitivity (95% CI)	Specificity (95% CI)	Positive predictive value (95% CI)	Negative predictive value (95% CI)
>0	1.00 (1.00, 1.00)	0.03 (0.03, 0.03)	0.12 (0.12, 0.12)	0.99 (0.98, 1.00)
>1	0.99 (0.99, 1.00)	0.08 (0.08, 0.09)	0.13 (0.12, 0.13)	0.99 (0.99, 0.99)
>2	0.99 (0.98, 0.99)	0.15 (0.15, 0.15)	0.13 (0.13, 0.14)	0.99 (0.99, 0.99)
>3	0.97 (0.97, 0.98)	0.23 (0.22, 0.23)	0.14 (0.14, 0.15)	0.99 (0.98, 0.99)
>4	0.96 (0.95, 0.96)	0.30 (0.29, 0.30)	0.15 (0.15, 0.16)	0.98 (0.98, 0.98)
>5	0.92 (0.91, 0.93)	0.37 (0.37, 0.38)	0.16 (0.16, 0.17)	0.97 (0.97, 0.97)
>6	0.86 (0.85, 0.86)	0.44 (0.44, 0.44)	0.17 (0.17, 0.17)	0.96 (0.96, 0.96)
>7	0.78 (0.77, 0.79)	0.51 (0.50, 0.51)	0.17 (0.17, 0.18)	0.95 (0.94, 0.95)
>8	0.70 (0.69, 0.71)	0.57 (0.57, 0.58)	0.18 (0.17, 0.18)	0.94 (0.93, 0.94)
>9	0.61 (0.60, 0.62)	0.63 (0.63, 0.64)	0.18 (0.18, 0.19)	0.93 (0.92, 0.93)
>10	0.52 (0.51, 0.53)	0.70 (0.69, 0.70)	0.18 (0.18, 0.19)	0.92 (0.91, 0.92)
>11	0.43 (0.42, 0.44)	0.75 (0.74, 0.75)	0.18 (0.18, 0.19)	0.91 (0.91, 0.91)
>12	0.34 (0.33, 0.35)	0.81 (0.80, 0.81)	0.19 (0.18, 0.20)	0.90 (0.90, 0.90)
>13	0.24 (0.23, 0.25)	0.85 (0.85, 0.85)	0.18 (0.17, 0.19)	0.89 (0.89, 0.90)
>14	0.17 (0.16, 0.18)	0.89 (0.89, 0.89)	0.17 (0.16, 0.18)	0.89 (0.89, 0.89)
>15	0.13 (0.12, 0.14)	0.92 (0.92, 0.92)	0.17 (0.16, 0.18)	0.89 (0.89, 0.89)
>16	0.09 (0.08, 0.09)	0.94 (0.94, 0.94)	0.16 (0.15, 0.17)	0.89 (0.88, 0.89)
>17	0.06 (0.05, 0.06)	0.96 (0.96, 0.96)	0.17 (0.15, 0.18)	0.88 (0.88, 0.89)
>18	0.04 (0.03, 0.04)	0.97 (0.97, 0.98)	0.15 (0.14, 0.17)	0.88 (0.88, 0.89)
>19	0.02 (0.01, 0.02)	0.98 (0.98, 0.99)	0.13 (0.11, 0.16)	0.88 (0.88, 0.89)
>20	0.01 (0.01, 0.01)	0.99 (0.99, 0.99)	0.13 (0.10, 0.16)	0.88 (0.88, 0.89)
>21	0.00 (0.00, 0.01)	0.99 (0.99, 0.99)	0.09 (0.06, 0.14)	0.88 (0.88, 0.89)
>22	0.00 (0.00, 0.00)	1.00 (1.00, 1.00)	0.08 (0.04, 0.15)	0.88 (0.88, 0.89)
>23	0.00 (0.00, 0.00)	1.00 (1.00, 1.00)	0.07 (0.02, 0.17)	0.88 (0.88, 0.89)
>24	0.00 (0.00, 0.00)	1.00 (1.00, 1.00)	0.00 (0.00, 0.18)	0.88 (0.88, 0.89)

Supplementary Table 7: Sensitivity, specificity, PPV, NPV at each score threshold for predicting the secondary outcome of death without organ support, validation cohort

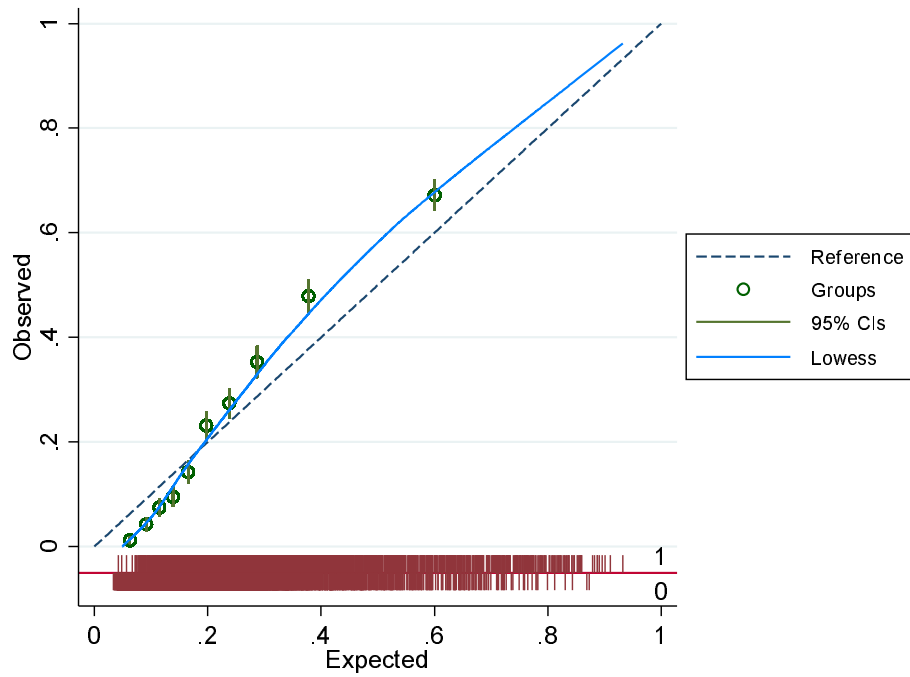
Score threshold	Sensitivity (95% CI)	Specificity (95% CI)	Positive predictive value (95% CI)	Negative predictive value (95% CI)
>0	1.00 (1.00, 1.00)	0.03 (0.03, 0.03)	0.13 (0.12, 0.13)	1.00 (0.99, 1.00)
>1	1.00 (1.00, 1.00)	0.09 (0.08, 0.09)	0.13 (0.13, 0.13)	1.00 (1.00, 1.00)
>2	1.00 (1.00, 1.00)	0.15 (0.15, 0.16)	0.14 (0.14, 0.14)	1.00 (1.00, 1.00)
>3	1.00 (0.99, 1.00)	0.23 (0.23, 0.23)	0.15 (0.15, 0.16)	1.00 (1.00, 1.00)
>4	0.99 (0.99, 1.00)	0.30 (0.30, 0.31)	0.17 (0.16, 0.17)	1.00 (1.00, 1.00)
>5	0.98 (0.97, 0.98)	0.38 (0.38, 0.39)	0.18 (0.18, 0.18)	0.99 (0.99, 0.99)
>6	0.96 (0.96, 0.96)	0.46 (0.45, 0.46)	0.20 (0.19, 0.20)	0.99 (0.99, 0.99)
>7	0.93 (0.93, 0.94)	0.53 (0.53, 0.53)	0.22 (0.21, 0.22)	0.98 (0.98, 0.98)
>8	0.89 (0.88, 0.90)	0.60 (0.60, 0.61)	0.24 (0.23, 0.24)	0.98 (0.97, 0.98)
>9	0.84 (0.83, 0.85)	0.67 (0.66, 0.67)	0.26 (0.25, 0.26)	0.97 (0.97, 0.97)
>10	0.77 (0.76, 0.78)	0.73 (0.73, 0.74)	0.29 (0.28, 0.29)	0.96 (0.96, 0.96)
>11	0.70 (0.69, 0.71)	0.79 (0.78, 0.79)	0.31 (0.31, 0.32)	0.95 (0.95, 0.95)
>12	0.59 (0.58, 0.60)	0.84 (0.84, 0.85)	0.34 (0.34, 0.35)	0.94 (0.93, 0.94)
>13	0.50 (0.49, 0.51)	0.89 (0.88, 0.89)	0.38 (0.37, 0.39)	0.93 (0.92, 0.93)
>14	0.40 (0.39, 0.41)	0.92 (0.92, 0.92)	0.42 (0.41, 0.43)	0.92 (0.92, 0.92)
>15	0.32 (0.31, 0.33)	0.95 (0.94, 0.95)	0.45 (0.44, 0.46)	0.91 (0.91, 0.91)
>16	0.25 (0.25, 0.26)	0.96 (0.96, 0.97)	0.49 (0.48, 0.51)	0.90 (0.90, 0.91)
>17	0.17 (0.17, 0.18)	0.98 (0.98, 0.98)	0.52 (0.50, 0.54)	0.89 (0.89, 0.90)
>18	0.11 (0.11, 0.12)	0.99 (0.98, 0.99)	0.52 (0.49, 0.54)	0.89 (0.89, 0.89)
>19	0.08 (0.07, 0.08)	0.99 (0.99, 0.99)	0.60 (0.57, 0.63)	0.89 (0.88, 0.89)
>20	0.05 (0.04, 0.05)	1.00 (1.00, 1.00)	0.63 (0.59, 0.67)	0.88 (0.88, 0.89)
>21	0.03 (0.03, 0.04)	1.00 (1.00, 1.00)	0.72 (0.66, 0.76)	0.88 (0.88, 0.88)
>22	0.02 (0.01, 0.02)	1.00 (1.00, 1.00)	0.76 (0.68, 0.83)	0.88 (0.88, 0.88)
>23	0.01 (0.01, 0.01)	1.00 (1.00, 1.00)	0.80 (0.68, 0.88)	0.88 (0.88, 0.88)
>24	0.01 (0.00, 0.01)	1.00 (1.00, 1.00)	0.86 (0.66, 0.96)	0.88 (0.88, 0.88)

Supplementary Figure 1: Calibration plot for unrestricted LASSO model performance, validation cohort



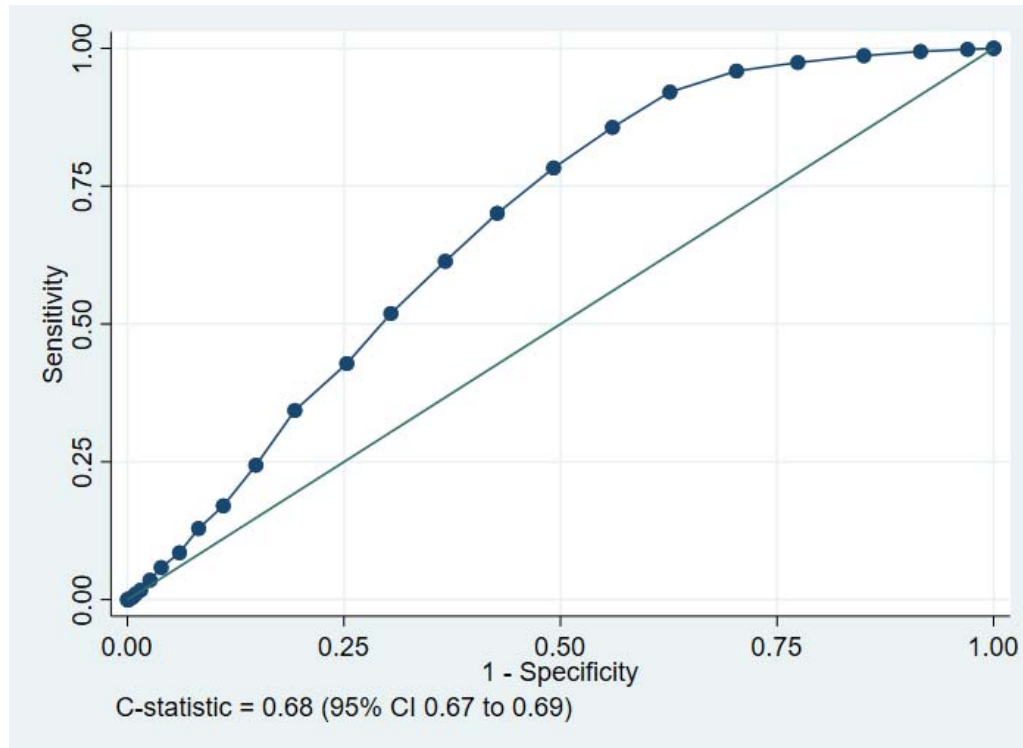
C-statistic 0.82 (95% CI 0.81 to 0.83)

Supplementary Figure 2: Calibration plot for restricted LASSO model performance, validation cohort



C-statistic 0.81 (95% CI 0.80 to 0.82)

Supplementary Figure 3: ROC curve for the tool predicting the secondary outcome of organ support, validation cohort



Supplementary Figure 4: ROC curve for tool predicting the secondary outcome of death without organ support, validation cohort

