

1 Supplementary Materials for

2
3 Wastewater Analysis of SARS-CoV-2 as a Predictive Metric of Positivity Rate for
4 a Major Metropolis

5
6 L.B. Stadler^{1,*†}, K.B. Ensor^{2,†,*}, J.R. Clark³, P. Kalvapalle¹, Z.W. LaTurner¹, L. Mojica⁴, A.
7 Terwilliger³, Y. Zhuo², P. Ali¹, V. Avadhanula³, R. Bertolusso², T. Crosby¹, H. Hernandez³, M.
8 Hollstein¹, K. Weesner³, D.M. Zong¹, D. Persse^{4,5}, P.A. Piedra³, A.W. Maresso^{3,†,*}, L.
9 Hopkins^{2,4,*}

10
11 ¹Department of Civil and Environmental Engineering, Rice University, 6100 Main Street MS
12 519, Houston, TX 77005

13 ²Department of Statistics, Rice University, 6100 Main Street MS 138, Houston, TX 77005

14 ³Department of Molecular Virology and Microbiology, Baylor College of Medicine, One Baylor
15 Plaza, Houston, TX 77030

16 ⁴Houston Health Department, 8000 N. Stadium Dr., Houston, TX 77054

17 ⁵Departments of Emergency Medicine and Surgery, Baylor College of Medicine, One Baylor
18 Plaza, Houston, TX 77030

19 *Correspondence to: lauren.stadler@rice.edu; ensor@rice.edu; maresso@bcm.edu;
20 loren.hopkins@houstontx.gov

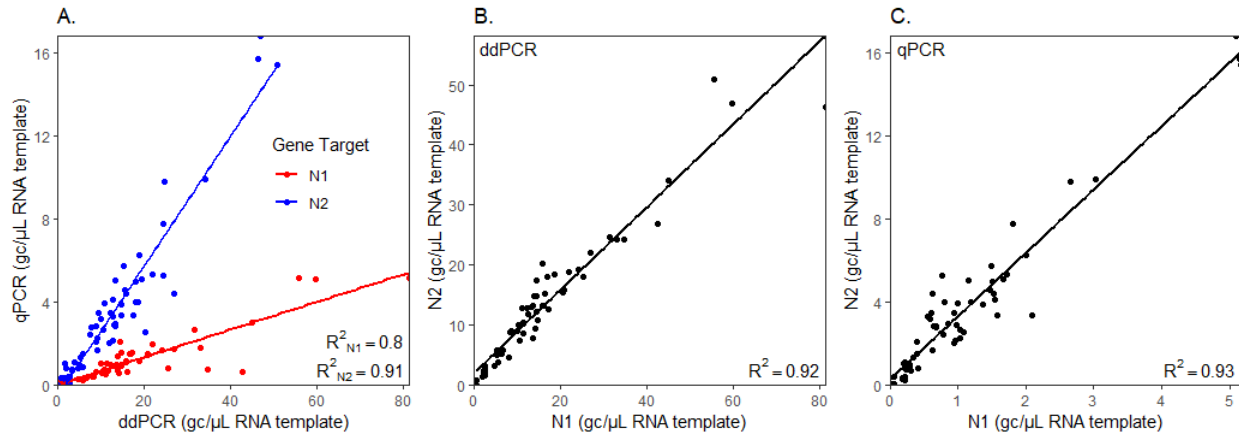
21 †These authors contributed equally to this work.

22

23 This file includes:

24 Figs. S1 to S5

25 Tables S1 to S3

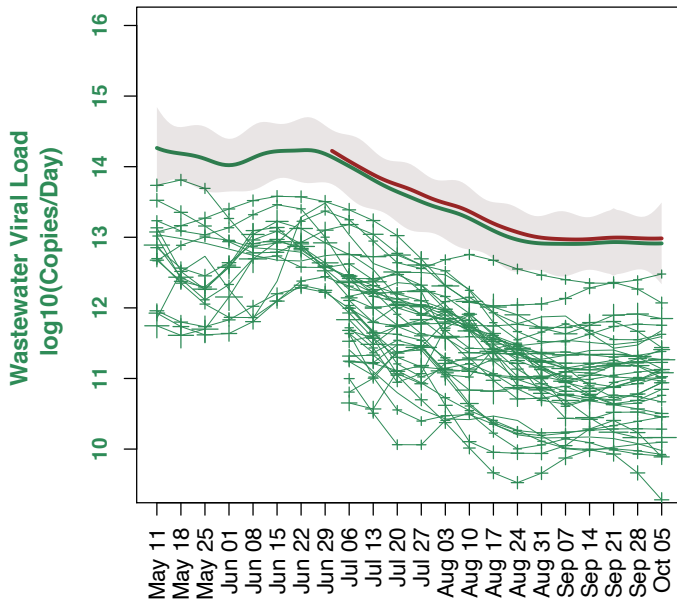


26

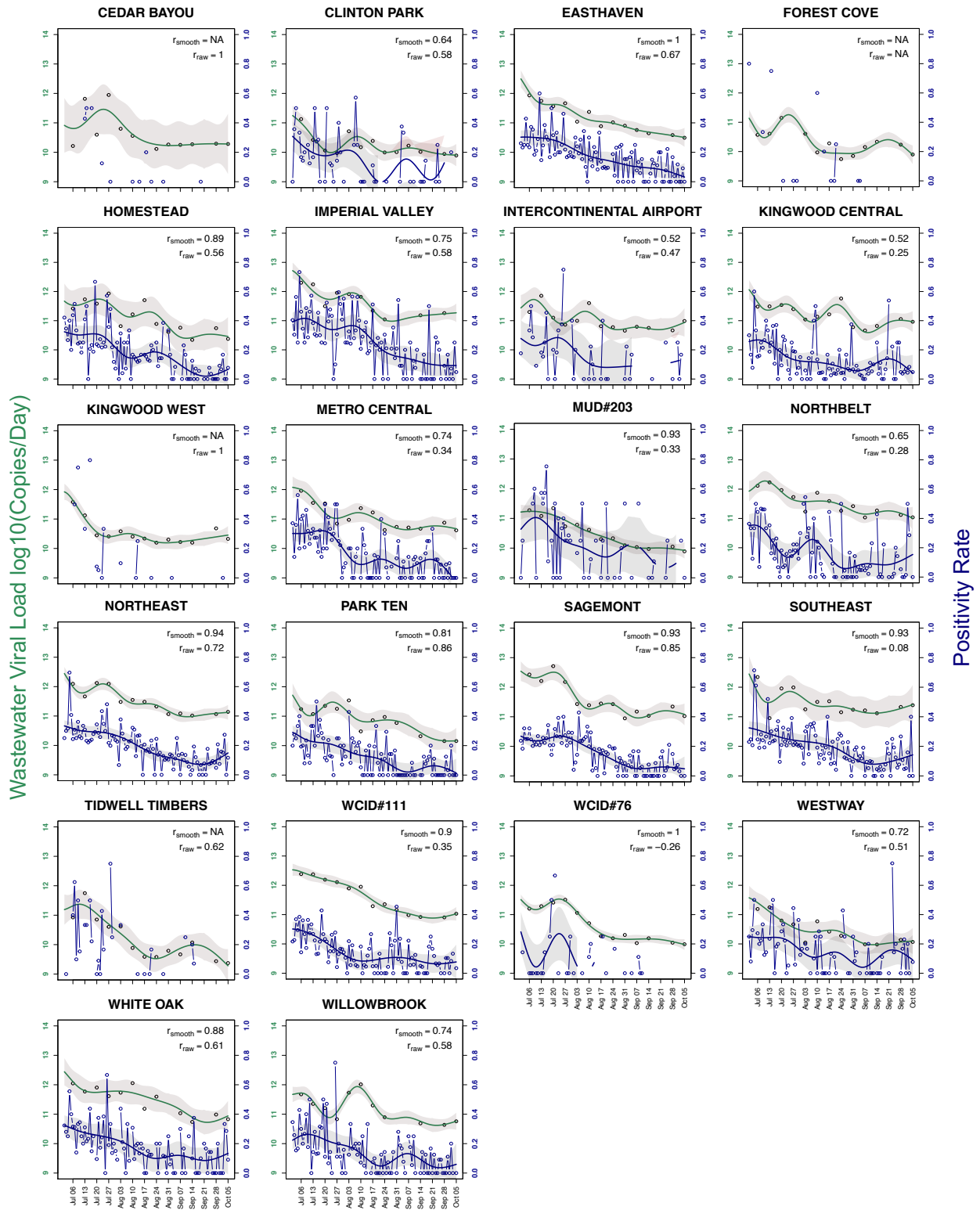
27 **Fig. S1. (A)** Comparison between RT-ddPCR and RT-qPCR of either N1 measurements or N2

28 measurements in gene copies (GC) per μL of RNA extract template. **(B)** Comparison of N1 to

29 N2 as measured by RT-ddPCR. **(C)** Comparison of N1 to N2 as measured by RT-qPCR.



30
 31 **Fig. S2.** Each + indicates a sample collected from a WWTP and those connected with lines were
 32 collected from the same WWTP on different weeks. The size of the + denotes the level of
 33 uncertainty for each set of observations. A nonlinear regression (spline) was fit to the
 34 observations from each WWTP. Sixteen WWTPs were sampled since May 11, and the remaining
 35 23 WWTPs were sampled starting on July 6. The individual splines of the original 16 WWTPs
 36 were inverse log₁₀ transformed, summed, and then log₁₀ transformed to form the overall spline
 37 (green line). The grey represents the 95% confidence band for the overall estimate and is derived
 38 from the sum of the variances of each spline. The red line is the aggregate spline of the viral
 39 loads from all 39 WWTPs.



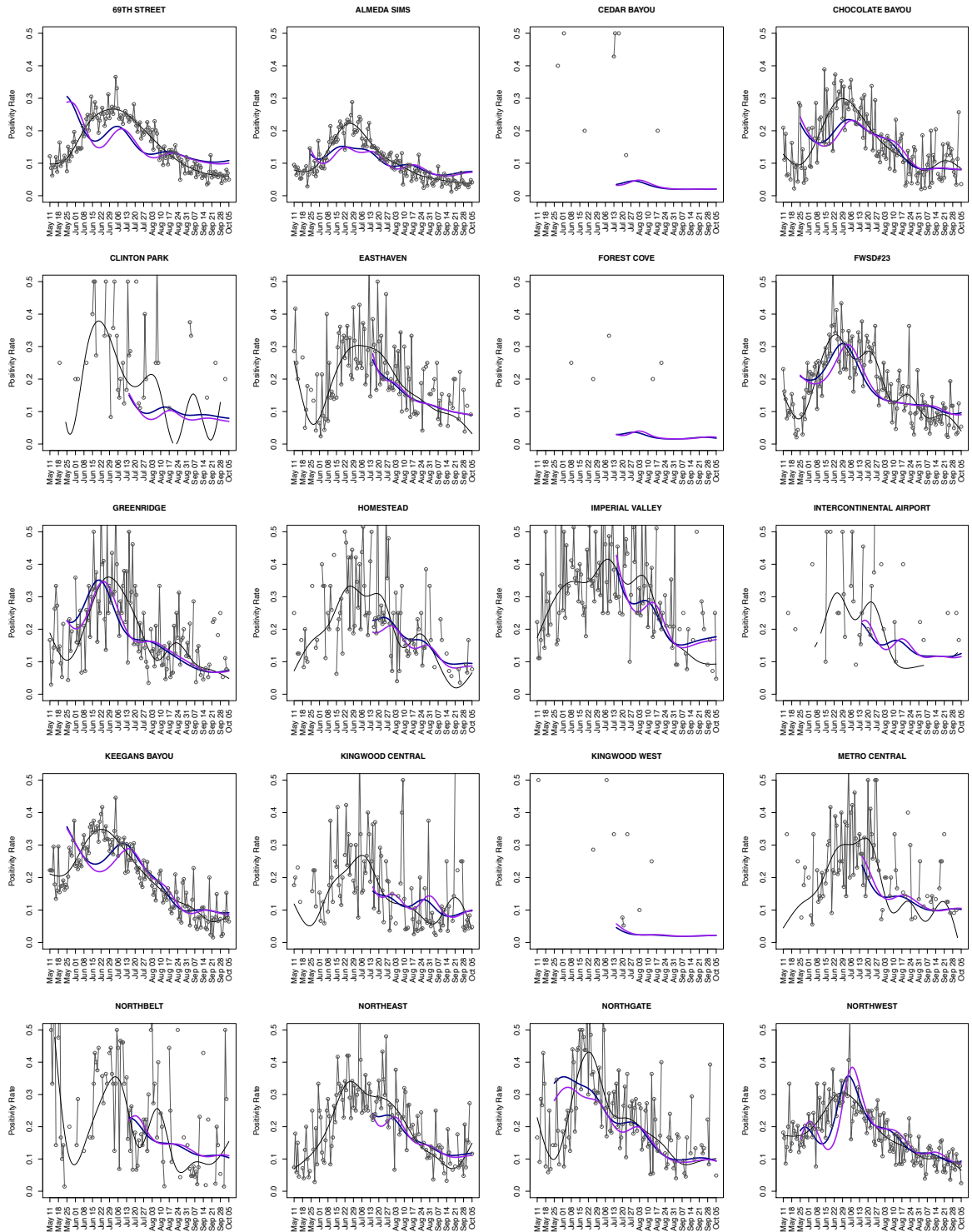
40

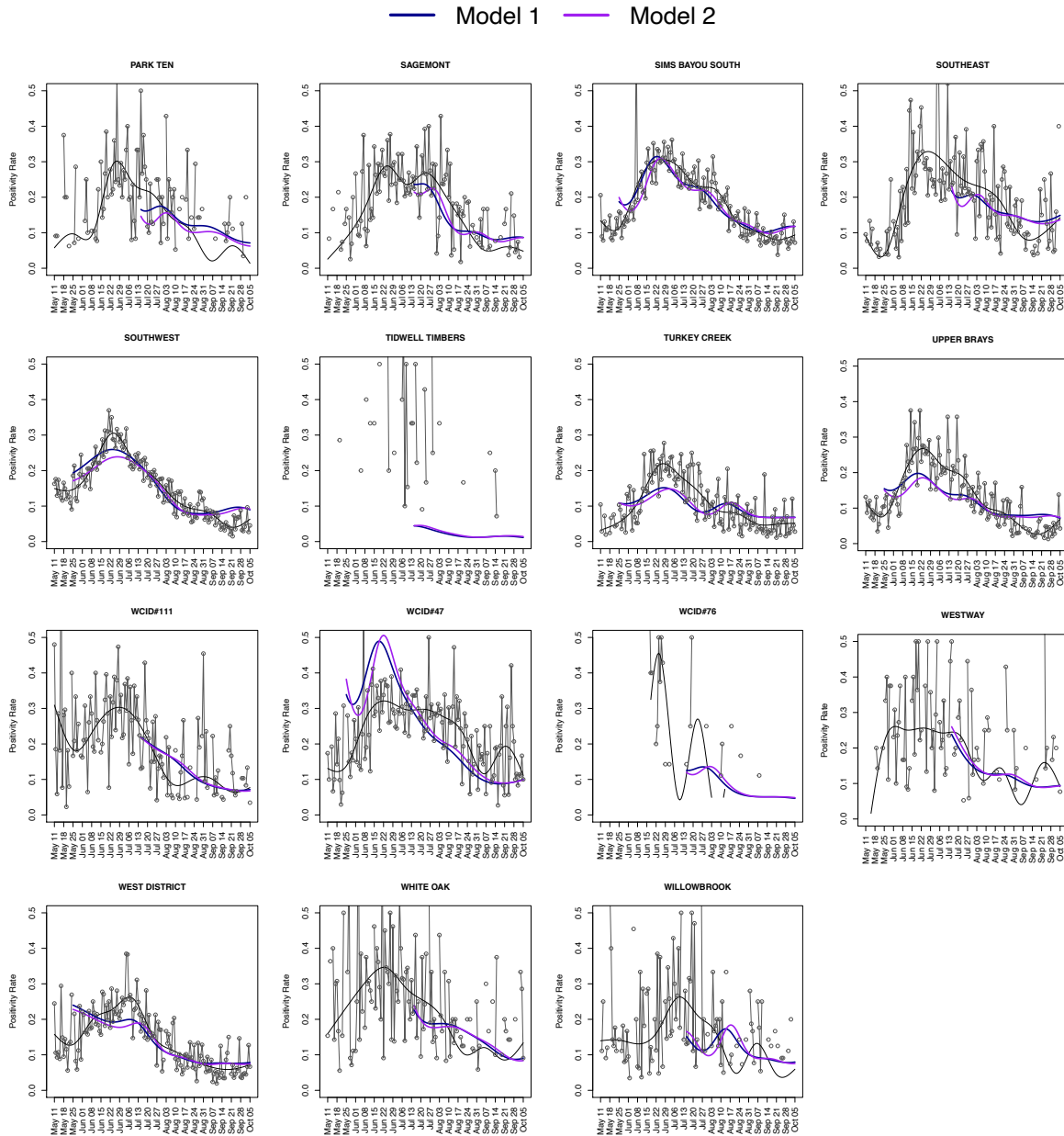
41 **Fig. S3.** Wastewater viral loads and positivity rates for individual WWTPs sampled between July

42 6 and October 5. Individual observations for the wastewater viral load and positivity rate are

43 denoted by \circ and green (wastewater) and blue (positivity rate) lines are the nonlinear regressions
44 (splines) fit to the observations. Grey represents the 95% confidence bands. r_{smooth} is the r
45 Spearman estimate between the wastewater and positivity rate splines taken weekly, and r_{raw} is
46 between the raw observations taken weekly on the dates with wastewater observations. Positivity
47 rates were only calculated if there were at least 4 clinical tests performed in that sewershed
48 population on that day.

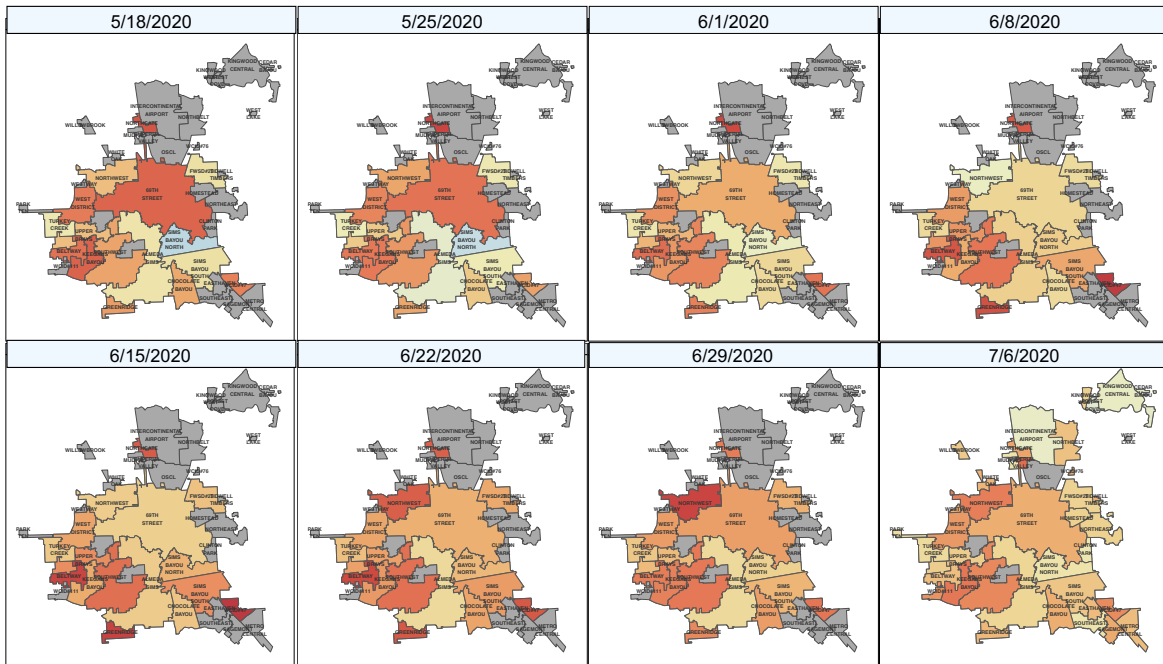
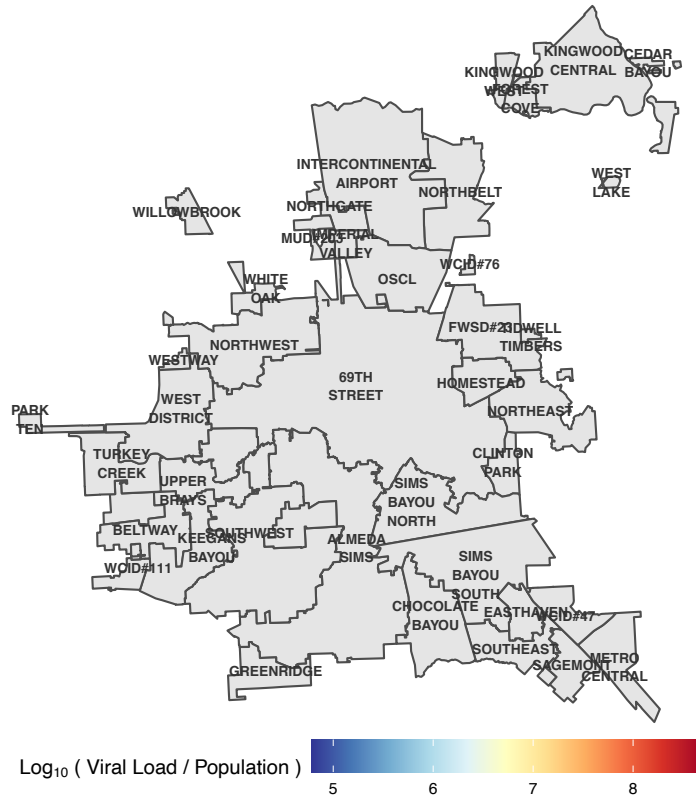
— Model 1 — Model 2

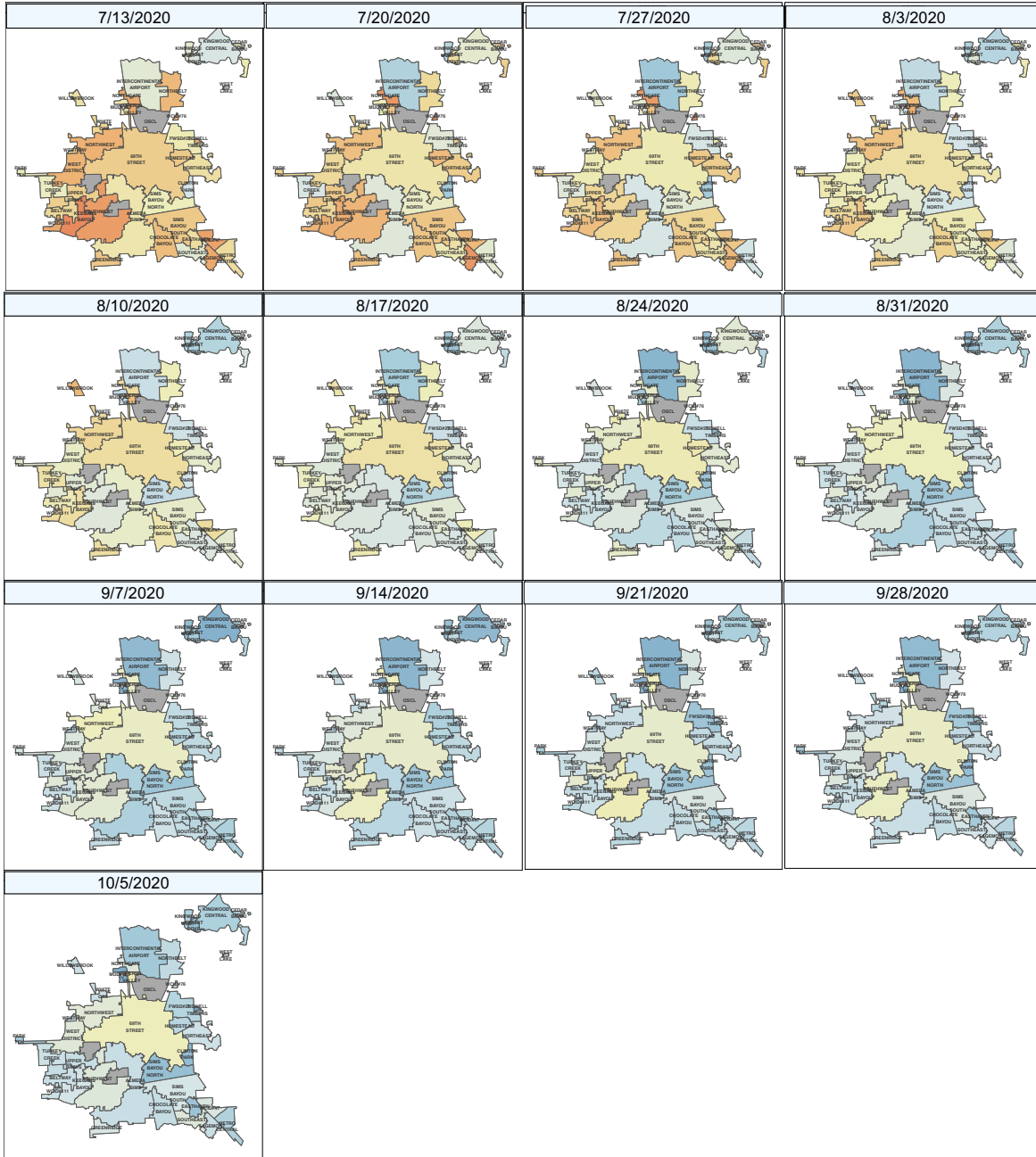




50

51 **Fig. S4.** Comparison of predicted positivity rates using model 1 (blue) and 2 (purple) against
 52 clinical positivity rates for the sewershed. Daily clinical positivity rates are shown as grey circles
 53 and smoothed positivity rate is represented by the grey lines. Positivity rates were only
 54 calculated if there were at least 4 nasal clinical tests performed in that sewershed population on
 55 that day.





58

59 **Fig. S5.** Maps of population-normalized viral load for each sewershed (outlined in black) for
 60 each week between May 11 and October 5 based on regression model estimates of viral load and
 61 normalized using the service area populations in Table S1.

62 **Table S1.** Wastewater treatment plants sampled, average flow rates, service populations, and
 63 geographic service areas

| Wastewater treatment plant | Abbreviation | Flowrate, MGD (AVG ± SD) | Population | Average gal/cap/day | Area, square miles |
|----------------------------|--------------|-----------------------------|------------------|------------------------|-----------------------|
| 69th Street | 69 | 80.03 ± 21.77 | 563,727 | 129 | 96.72 |
| Almeda Sims | AS | 13.76 ± 11.93 | 330,126 | 34 | 54.93 |
| Beltway | BW | 6.93 ± 4.70 | 134,557 | 47 | 9.76 |
| Cedar Bayou | CD | 0.78 ± 0.42 | 15,601 | 44 | 3.27 |
| Chocolate Bayou | CB | 4.03 ± 4.19 | 64,306 | 54 | 14.61 |
| Clinton Park | CP | 0.69 ± 0.81 | 14,295 | 40 | 4.14 |
| Easthaven | EH | 1.89 ± 1.85 | 46,111 | 33 | 4.78 |
| FWSD#23 | 23 | 3.09 ± 2.52 | 60,791 | 43 | 15.14 |
| Forest Cove | FC | 0.28 ± 0.13 | 13,447 | 19 | 2.73 |
| Greenridge | GR | 3.06 ± 3.06 | 54,739 | 46 | 6.87 |
| Homestead | HO | 1.58 ± 1.53 | 23,087 | 55 | 6.12 |
| Imperial Valley | IV | 1.75 ± 0.70 | 28,771 | 56 | 2.22 |
| Intercontinental Airport | IA | 1.91 ± 0.63 | 110,793 | 16 | 38.73 |
| Keegans Bayou | KB | 14.25 ± 10.31 | 184,339 | 66 | 13.78 |
| Kingwood Central | KW | 3.49 ± 1.46 | 94,774 | 36 | 23.04 |
| Kingwood West | MG | 0.61 ± 0.20 | 28,972 | 19 | 2.6 |
| MUD#203 | 203 | 0.38 ± 0.12 | 22,558 | 16 | 2.57 |
| Metro Central | MC | 1.99 ± 1.64 | 44,793 | 36 | 9.86 |
| Northbelt | NO | 2.37 ± 1.49 | 70,168 | 32 | 15.79 |
| Northeast | NE | 3.88 ± 4.25 | 68,316 | 190 | 14.41 |
| Northgate | NG | 2.75 ± 1.03 | 48,292 | 52 | 3.6 |
| Northwest | NW | 9.99 ± 5.84 | 147,177 | 61 | 22.62 |
| Park Ten | PT | 0.62 ± 0.31 | 17,889 | 30 | 2.19 |
| Sagemont | SG | 4.52 ± 3.49 | 67,929 | 56 | 5.9 |
| Sims Bayou South* | SS | 23.93 ± 18.22 | 304,253 | 68 | 47.84 |
| Sims Bayou North* | SB | 8.22 ± 7.54 | 304,253 | 22 | 47.84 |
| Southeast | SE | 4.88 ± 4.85 | 86,598 | 45 | 9.06 |
| Southwest | SW | 37.59 ± 26.39 | 395,901 | 80 | 38.72 |
| Tidwell Timbers | TT | 0.11 ± 0.06 | 6,564 | 15 | 0.57 |
| Turkey Creek | TC | 7.00 ± 4.85 | 91,460 | 65 | 10.46 |
| Upper Brays | UB | 10.33 ± 7.44 | 167,098 | 52 | 12.81 |
| WCID#111 | 111 | 2.24 ± 0.28 | 57,865 | 38 | 3.35 |
| WCID#47 | 47 | 3.36 ± 2.28 | 46,775 | 63 | 6.27 |
| WCID#76 | 76 | 0.37 ± 0.22 | 5,130 | 62 | 0.5 |
| West District | WD | 10.06 ± 6.62 | 126,321 | 67 | 17.86 |
| West Lake | WL | 0.20 ± 0.07 | 35,769 | 5 | 0.53 |
| Westway | WW | 0.40 ± 0.18 | 8,121 | 48 | 0.99 |
| White Oak | WO | 1.84 ± 0.91 | 48,203 | 35 | 3.31 |
| Willowbrook | WB | 1.28 ± 0.52 | 31,072 | 36 | 3.01 |
| TOTAL | | 272.23 ± 159.04 | 3,666,688 | 49±32 | 532 |

64 *Sims Bayou South and North have overlapping geographic service areas.

65 **Table S2.** CDC primers for SARS-CoV-2 N1 and N2

66

| Name | Description | Sequence (5' - 3') |
|-------------|------------------------|--------------------------------------|
| CoV2_N1-F | CoV2 N1 Forward Primer | GACCCCAAATCAGCGAAAT |
| CoV2_N1-R | CoV2 N1 Reverse Primer | TCTGGTACTGCCAGTTGAATCTG |
| CoV2_N1-Pr | CoV2 N1 Probe | VIC – ACCCCGCATTACGTTTGGTGGACC – QSY |
| CoV2_N2-F | CoV2 N2 Forward Primer | TTACAAACATTGGCCGCAA |
| CoV2_N2-R | CoV2 N2 Reverse Primer | GCGCGACATTCCGAAGAA |
| CoV2_N2-Pr | CoV2 N2 Probe | FAM – ACAATTTGCCCCAGCGCTTCAG – QSY |

67

68 **Table S3.** Summary model results for predictive Model 1 and 2.

| Model 1 | DF | F-Value | p-value |
|---|----|----------|----------|
| Intercept | 1 | 12183.16 | < 0.0001 |
| WWTP | 33 | 5.75 | <0.0001 |
| Current log10 copies/day | 1 | 431.82 | <0.0001 |
| 7-day lead of viral load in log10 copies/day | 1 | 70.85 | <0.0001 |
| 14-day lead of viral load in log10 copies/day | 1 | 26.64 | <0.0001 |

69

| Model 2: | DF | F-Value | p-value |
|---|----|----------|----------|
| Intercept | 1 | 10672.51 | < 0.0001 |
| WWTP | 33 | 4.91 | <0.0001 |
| 7-day lead of viral load in log10 copies/day | 1 | 422.14 | <0.0001 |
| 14-day lead of viral load in log10 copies/day | 1 | 46.26 | <0.0001 |

70