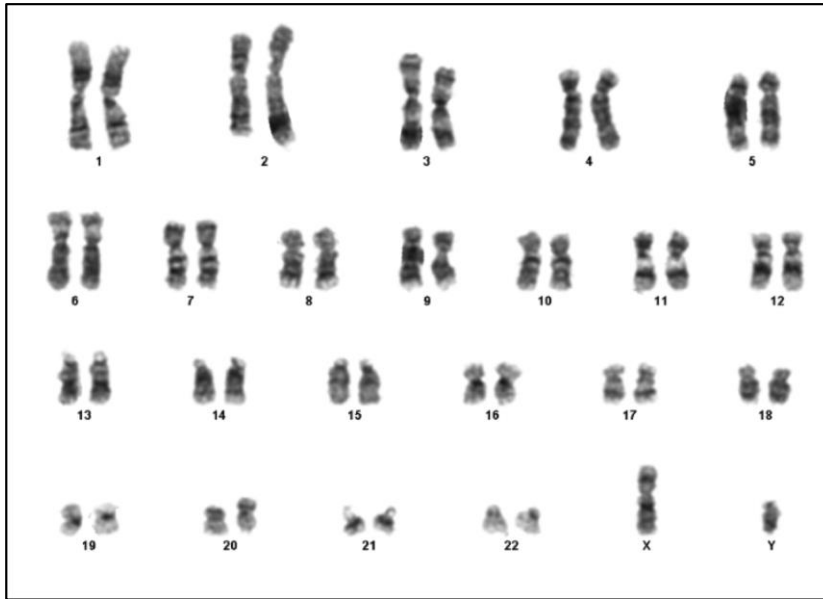


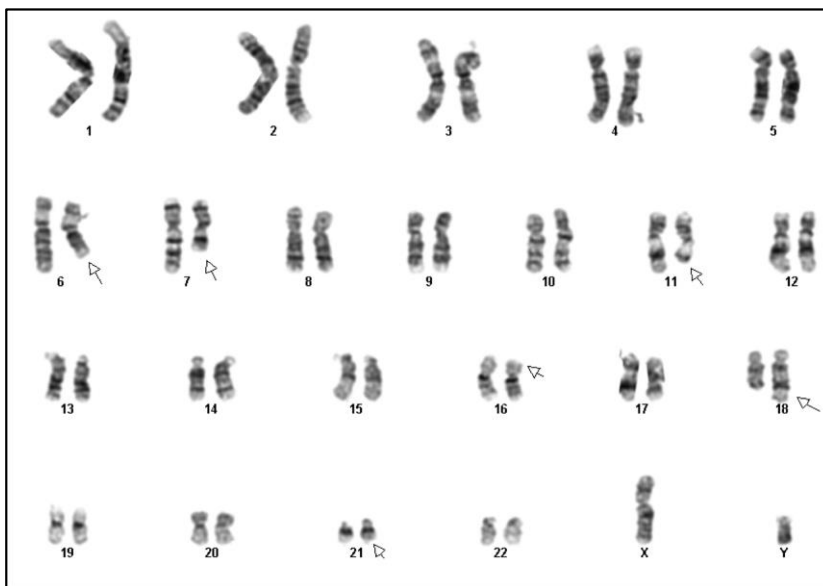
Convergent molecular evolution in acute myeloid leukaemia

Supplementary material

Convergent molecular evolution in acute myeloid leukaemia
Supplementary material



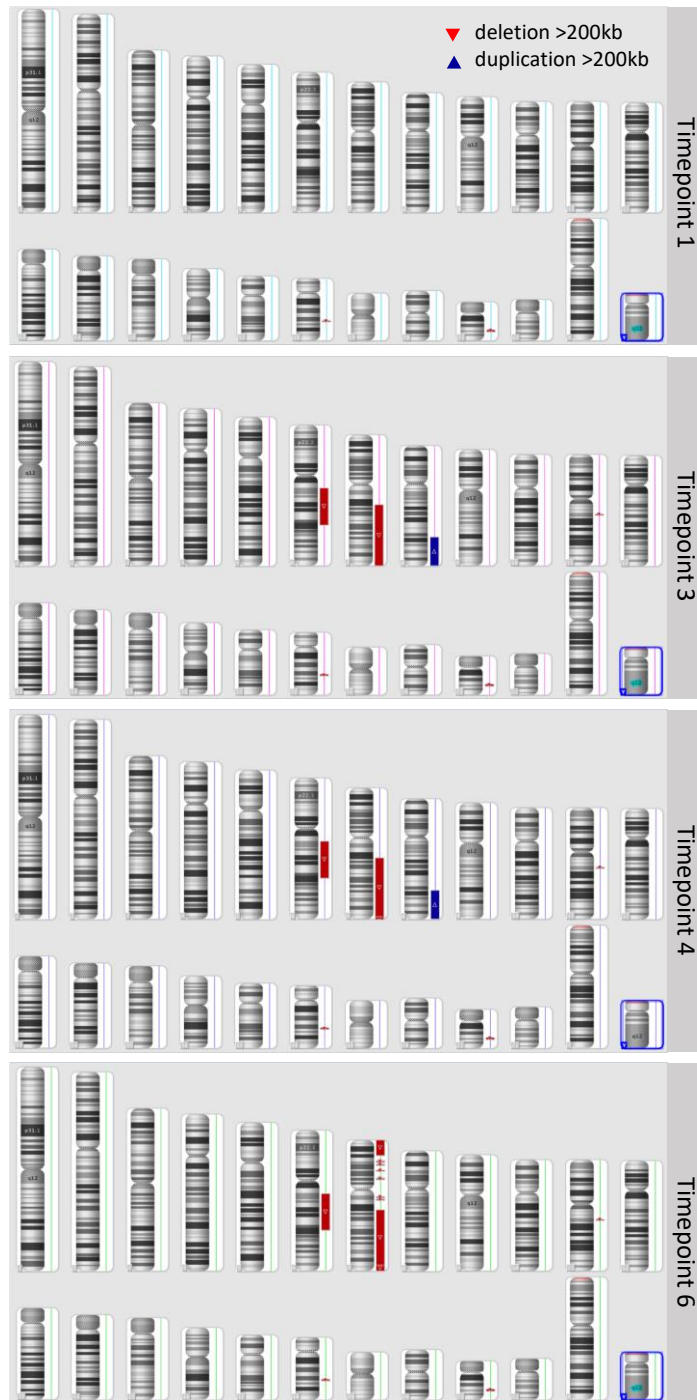
G-band analysis of 20 metaphase after unstimulated cultivation of bone marrow aspirate taken at TP1 show normal karyotype, 46 XY



G-band analysis after unstimulated cultivation of bone marrow aspirate taken at TP3 show complex karyotype, 46,XY,del(6)(q16q23),del(7)(q22q35),t(11;18)(q21;q22)[7]/46,idem,t(3;15)(p?21;q?23[3]).

Supplementary figure 1: G-band analysis of TP1 and TP3.

Convergent molecular evolution in acute myeloid leukaemia
Supplementary material



Supplementary figure 2: Array-based copy number analysis of samples TP1, TP3, TP4 and TP6

Convergent molecular evolution in acute myeloid leukaemia
Supplementary material



Supplementary figure 3: Array-based copy number analysis of samples TP5-PDX a, TP5-PDX h, TP1, TP3, TP4 and TP6

Convergent molecular evolution in acute myeloid leukaemia
Supplementary material

Supplementary table 1-TP1: Exome sequencing Timepoint 1 – Primary material

Gene name	Transcript	Chr.	Position	Ref.	Var.	Effect	Amino acid change	Impact	Normal reads 1	Normal reads 2	Normal VAF	Tumour reads 1	Tumour reads 2	Tumour VAF	Somatic p-value
ADAM21*	ENST00000267499	chr14	70925306	A	C	NON_SYNONYMOUS_CODING	I364L	MODERATE	27	1	3.57	85	70	45.16	0.00001
ASXL1*	ENST00000375687	chr20	31021590	C	CGG	FRAME_SHIFT	-530?	HIGH	8	0	0	28	22	44	0.01579
ATP2C2	ENST00000416219	chr16	84495404	A	C	NON_SYNONYMOUS_CODING	T885P	MODERATE	30	0	0	41	7	14.58	0.02787
CCDC59	ENST00000256151	chr12	82750844	T	G	NON_SYNONYMOUS_CODING	H120P	MODERATE	65	0	0	299	16	5.08	0.04648
FAT4*	ENST00000394329	chr4	126328128	C	T	NON_SYNONYMOUS_CODING	R1801W	MODERATE	36	0	0	90	69	43.4	0.00000
H2AFZP1	ENST00000416034	chr21	45466387	G	GT	SPLICE_SITE_ACCEPTOR	NA	HIGH	37	0	0	95	10	9.52	0.04343
HNRNPH1*	ENST00000329433	chr5	179043197	G	GC	FRAME_SHIFT	-410?	HIGH	9	1	10	36	27	42.86	0.04507
KCNC2*	ENST00000549446	chr12	75436913	G	A	NON_SYNONYMOUS_CODING	S630F	MODERATE	74	2	2.63	149	100	40.16	0.00000
MYO5B	ENST00000285039	chr18	47363917	A	G	NON_SYNONYMOUS_CODING	V1703A	MODERATE	32	0	0	75	9	10.71	0.04829
NAP1L5	ENST00000323061	chr4	89618758	GACCA GCCGC GCTGT CAGGG TC	G	CODON_DELETION	DPDSAAG43-	MODERATE	9	0	0	18	14	43.75	0.01338
NRAS*	ENST00000369535	chr1	115256529	T	C	NON_SYNONYMOUS_CODING	Q61R	MODERATE	42	0	0	112	59	34.5	0.00000
SELRC1	ENST00000371538	chr1	53158524	A	C	NON_SYNONYMOUS_CODING	V41G	MODERATE	18	0	0	73	31	29.81	0.00315
SLC4A2*	ENST00000413384	chr7	150773166	G	A	NON_SYNONYMOUS_CODING	V1180I	MODERATE	8	0	0	1	9	90	0.00021
STIL*	ENST00000371877	chr1	47746300	A	T	NON_SYNONYMOUS_CODING	S610R	MODERATE	25	0	0	91	58	38.93	0.00001
TMPRSS13	ENST00000445164	chr11	117789342	T	C	NON_SYNONYMOUS_CODING	Q78R	MODERATE	8	1	11.11	0	6	100	0.00140
TRAF6*	ENST00000526995	chr11	36511704	T	A	NON_SYNONYMOUS_CODING	Y418F	MODERATE	76	0	0	143	116	44.79	0.00000

*Mutations shared across all primary samples

Convergent molecular evolution in acute myeloid leukaemia
Supplementary material

Supplementary table 1-TP3: Exome sequencing Timepoint 3 - Primary material

Gene name	Transcript	Chr.	Position	Ref.	Var.	Effect	Amino acid change	Impact	Normal reads 1	Normal reads 2	Normal VAF	Tumour reads 1	Tumour reads 2	Tumour VAF	Somatic p-value
ADAM21*	ENST00000267499	chr14	70925306	A	C	NON_SYNONYMOUS_CODING	I364L	MODERATE	27	1	3.57	70	63	47.37	0.00000
ASXL1*	ENST00000375687	chr20	31021590	C	CGG	FRAME_SHIFT	-530?	HIGH	8	0	0	55	9	14.06	0.32358
ATP5G2	ENST00000394349	chr12	54069941	TAG	T	FRAME_SHIFT	-12	HIGH	13	0	0	40	18	31.03	0.01448
DHDDS	ENST00000360009	chr1	26764756	G	GCC	FRAME_SHIFT	-54?	HIGH	34	1	2.86	118	49	29.34	0.00025
EEF1D	ENST00000532741	chr8	144672215	C	T	NON_SYNONYMOUS_CODING	V63M	MODERATE	8	1	11.11	17	23	57.5	0.01363
ERI2	ENST00000357967	chr16	20809799	T	TCTAC	FRAME_SHIFT	-441V?	HIGH	20	0	0	67	14	17.28	0.03554
ERI2	ENST00000357967	chr16	20809802	A	AAAT	CODON_CHANGE_PLUS_CODON_INSERTION	S440YS	MODERATE	20	0	0	61	14	18.67	0.02743
FAT4*	ENST00000394329	chr4	126328128	C	T	NON_SYNONYMOUS_CODING	R1801W	MODERATE	36	0	0	157	30	16.04	0.00335
GBP7	ENST00000294671	chr1	89597869	T	C	NON_SYNONYMOUS_CODING	N627S	MODERATE	31	1	3.12	139	74	34.74	0.00006
H2AFZP1	ENST00000416034	chr21	45466387	G	GT	SPLICE_SITE_ACCEPTOR	NA	HIGH	37	0	0	88	9	9.28	0.04899
HNRNPH1*	ENST00000329433	chr5	179043197	G	GC	FRAME_SHIFT	-410?	HIGH	9	1	10	37	43	53.75	0.00919
KCNC2*	ENST00000549446	chr12	75436913	G	A	NON_SYNONYMOUS_CODING	S630F	MODERATE	74	2	2.63	202	18	8.18	0.07380
MYO5B	ENST00000285039	chr18	47363917	A	G	NON_SYNONYMOUS_CODING	V1703A	MODERATE	32	0	0	61	8	11.59	0.04137
NPIPL2	ENST00000429990	chr16	74425358	G	A	NON_SYNONYMOUS_CODING	A238T	MODERATE	10	0	0	18	5	21.74	0.14178
NRAS*	ENST00000369535	chr1	115256529	T	C	NON_SYNONYMOUS_CODING	Q61R	MODERATE	42	0	0	173	10	5.46	0.12081
ODF1	ENST00000285402	chr8	103573010	CTGCAA CCCCTGC AGCCCC TGCAAC CCG	C	CODON_DELETION	CNPCSP CNP218-	MODERATE	9	0	0	29	26	47.27	0.00592
SLC4A2*	ENST00000413384	chr7	150773166	G	A	NON_SYNONYMOUS_CODING	V1180I	MODERATE	8	0	0	2	9	81.82	0.00060
STIL*	ENST00000371877	chr1	47746300	A	T	NON_SYNONYMOUS_CODING	S610R	MODERATE	25	0	0	111	20	15.27	0.02354
TMPRSS13	ENST00000445164	chr11	117789342	T	C	NON_SYNONYMOUS_CODING	Q78R	MODERATE	8	1	11.11	17	3	15	0.63597
TRAF6*	ENST00000526995	chr11	36511704	T	A	NON_SYNONYMOUS_CODING	Y418F	MODERATE	76	0	0	239	16	6.27	0.01376

*Mutations shared across all primary samples

Convergent molecular evolution in acute myeloid leukaemia
Supplementary material

Supplementary table 1-TP5: Exome sequencing Timepoint 5 - Primary material

Gene name	Transcript	Chr.	Position	Ref.	Var.	Effect	Amino acid change	Impact	Normal reads 1	Normal reads 2	Normal VAF	Tumour reads 1	Tumour reads 2	Tumour VAF	Somatic p-value
ADAM21*	ENST00000267499	chr14	70925306	A	C	NON_SYNONYMOUS_CODING	I364L	MODERATE	27	1	3.57	94	85	47.49	0.00000
AFM	ENST00000226355	chr4	74349664	T	G	NON_SYNONYMOUS_CODING	F32C	MODERATE	31	0	0	198	25	11.21	0.03237
ANKRD36C	ENST00000456556	chr2	96521337	G	A	STOP_GAINED	Q1558*	HIGH	87	4	4.4	400	65	13.98	0.00523
ASXL1*	ENST00000421155	chr20	31021590	C	CGG	FRAME_SHIFT	A530A?	HIGH	8	0	0	60	13	17.81	0.22982
ATP5G2	ENST00000394349	chr12	54069941	TAG	T	FRAME_SHIFT	-12	HIGH	13	0	0	38	24	38.71	0.00376
DOCK2	ENST00000256935	chr5	169096329	A	AG	FRAME_SHIFT	Q56A?	HIGH	82	0	0	370	30	7.5	0.00306
EEF1D	ENST00000532741	chr8	144672215	C	T	NON_SYNONYMOUS_CODING	V63M	MODERATE	8	1	11.11	14	8	36.36	0.16743
ERI2	ENST00000357967	chr16	20809799	T	TCTAC	FRAME_SHIFT	G441G*?	HIGH	20	0	0	123	24	16.33	0.03645
ERI2	ENST00000357967	chr16	20809802	A	AAAT	CODON_CHANGE_PLUS_CODON_INSERTION	S440SF	MODERATE	20	0	0	126	23	15.44	0.04419
FAT4*	ENST00000394329	chr4	126328128	C	T	NON_SYNONYMOUS_CODING	R1801W	MODERATE	36	0	0	147	32	17.88	0.00169
GBP7	ENST00000294671	chr1	89597869	T	C	NON_SYNONYMOUS_CODING	N627S	MODERATE	31	1	3.12	187	20	9.66	0.19421
HNRNP1*	ENST00000329433	chr5	179043197	G	GC	FRAME_SHIFT	G410G?	HIGH	9	1	10	73	70	48.95	0.01600
IGHD5-18	ENST00000390575	chr14	106359406	A	G	NON_SYNONYMOUS_CODING	M5T	MODERATE	18	1	5.26	56	19	25.33	0.04628
KCNC2*	ENST00000549446	chr12	75436913	G	A	NON_SYNONYMOUS_CODING	S630F	MODERATE	74	2	2.63	167	23	12.11	0.01012
MYO5B	ENST00000285039	chr18	47363917	A	G	NON_SYNONYMOUS_CODING	V1703A	MODERATE	32	0	0	85	6	6.59	0.15686
NAP1L5	ENST00000323061	chr4	89618758	G	GACCA GCCGC GCTGT CAGGG TC	CODON_DELETION	DPDSAAG43 -	MODERATE	9	0	0	55	28	33.73	0.03170
NPIPL2	ENST00000429990	chr16	74425358	G	A	NON_SYNONYMOUS_CODING	A238T	MODERATE	10	0	0	14	16	53.33	0.00231
NRAS*	ENST00000369535	chr1	115256529	T	C	NON_SYNONYMOUS_CODING	Q61R	MODERATE	42	0	0	93	55	37.16	0.00000
NRXN3	ENST00000330071	chr14	79454391	T	G	NON_SYNONYMOUS_CODING	S1057A	MODERATE	40	0	0	55	9	14.06	0.01002
ORC3	ENST00000257789	chr6	88318940	A	C	NON_SYNONYMOUS_CODING	I236L	MODERATE	32	0	0	63	14	18.18	0.00524
PCDHA8	ENST00000531613	chr5	140221195	G	C	NON_SYNONYMOUS_CODING	G97R	MODERATE	38	0	0	164	18	9.89	0.02823
RGS20	ENST00000297313	chr8	54870975	A	C	NON_SYNONYMOUS_CODING	K375T	MODERATE	32	0	0	41	14	25.45	0.00080
ROBO1	ENST00000398414	chr3	78766994	T	A	NON_SYNONYMOUS_CODING	S233C	MODERATE	60	0	0	203	35	14.71	0.00022
SLC4A2*	ENST00000413384	chr7	150773166	G	A	NON_SYNONYMOUS_CODING	V1180I	MODERATE	8	0	0	16	25	60.98	0.00163
STIL*	ENST00000371877	chr1	47746300	A	T	NON_SYNONYMOUS_CODING	S610R	MODERATE	25	0	0	195	43	18.07	0.00907
TRAF6*	ENST00000526995	chr11	36511704	T	A	NON_SYNONYMOUS_CODING	Y418F	MODERATE	76	0	0	201	25	11.06	0.00050
ZNF700	ENST00000254321	chr19	12059700	T	G	NON_SYNONYMOUS_CODING	F287L	MODERATE	18	0	0	68	17	20	0.02779

*Mutations shared across all primary samples

Convergent molecular evolution in acute myeloid leukaemia
Supplementary material

Supplementary table 1-TP6: Exome sequencing Timepoint 6 - Primary material

Gene name	Transcript	Chr.	Position	Ref.	Var.	Effect	Amino acid change	Impact	Normal reads 1	Normal reads 2	Normal VAF	Tumour reads 1	Tumour reads 2	Tumour VAF	Somatic p-value
ADAM21*	ENST00000267499	chr14	70925306	A	C	NON_SYNONYMOUS_CODING	I364L	MODERATE	27	1	3.57	60	61	50.41	0.00000
ASXL1*	ENST00000375687	chr20	31021590	C	CGG	FRAME_SHIFT	-530?	HIGH	8	0	0	30	9	23.08	0.15552
ATP2C2	ENST00000416219	chr16	84495404	A	C	NON_SYNONYMOUS_CODING	T885P	MODERATE	30	0	0	51	7	12.07	0.04736
EEF1D	ENST00000532741	chr8	144672215	C	T	NON_SYNONYMOUS_CODING	V63M	MODERATE	8	1	11.11	3	9	75	0.00580
ERI2	ENST00000357967	chr16	20809799	T	TCTA C	FRAME_SHIFT	-441V?	HIGH	20	0	0	88	17	16.19	0.04102
ERI2	ENST00000357967	chr16	20809802	A	AAAT	CODON_CHANGE_PLUS_CODON_INSERTION	S440YS	MODERATE	20	0	0	81	17	17.35	0.03272
FAT4*	ENST00000394329	chr4	126328128	C	T	NON_SYNONYMOUS_CODING	R1801W	MODERATE	36	0	0	115	25	17.86	0.00201
GBP7	ENST00000294671	chr1	89597869	T	C	NON_SYNONYMOUS_CODING	N627S	MODERATE	31	1	3.12	175	30	14.63	0.05302
H2AFZP1	ENST00000416034	chr21	45466387	G	GT	SPLICE_SITE_ACCEPTOR	NA	HIGH	37	0	0	63	14	18.18	0.00269
HNRNPH1*	ENST00000329433	chr5	179043197	G	GC	FRAME_SHIFT	-410?	HIGH	9	1	10	45	33	42.31	0.04536
KCNC2*	ENST00000549446	chr12	75436913	G	A	NON_SYNONYMOUS_CODING	S630F	MODERATE	74	2	2.63	204	51	20	0.00005
NAP1L5	ENST00000323061	chr4	89618758	G	GACCAG CCGCGC TGTCAG GGTC	CODON_DELETION	DPDSAAG43-	MODERATE	9	0	0	22	12	35.29	0.03575
NPIPL2	ENST00000429990	chr16	74425358	G	A	NON_SYNONYMOUS_CODING	A238T	MODERATE	10	0	0	24	8	25	0.08912
NRAS*	ENST00000369535	chr1	115256529	T	C	NON_SYNONYMOUS_CODING	Q61R	MODERATE	42	0	0	121	40	24.84	0.00003
ROBO1	ENST00000398414	chr3	78766994	T	A	NON_SYNONYMOUS_CODING	S233C	MODERATE	60	0	0	178	24	11.88	0.00139
SELRC1	ENST00000371538	chr1	53158524	A	C	NON_SYNONYMOUS_CODING	V41G	MODERATE	18	0	0	76	17	18.28	0.03784
SLC4A2*	ENST00000413384	chr7	150773166	G	A	NON_SYNONYMOUS_CODING	V1180I	MODERATE	8	0	0	2	8	80	0.00103
STIL*	ENST00000371877	chr1	47746300	A	T	NON_SYNONYMOUS_CODING	S610R	MODERATE	25	0	0	113	18	13.74	0.03516
TAS2R30	ENST00000539585	chr12	11286149	G	A	NON_SYNONYMOUS_CODING	T232I	MODERATE	86	0	0	240	13	5.14	0.02056
TMPRSS13	ENST00000445164	chr11	117789342	T	C	NON_SYNONYMOUS_CODING	Q78R	MODERATE	8	1	11.11	3	4	57.14	0.07692
TRAF6*	ENST00000526995	chr11	36511704	T	A	NON_SYNONYMOUS_CODING	Y418F	MODERATE	76	0	0	209	42	16.73	0.00001

*Mutations shared across all primary samples

Convergent molecular evolution in acute myeloid leukaemia
Supplementary material

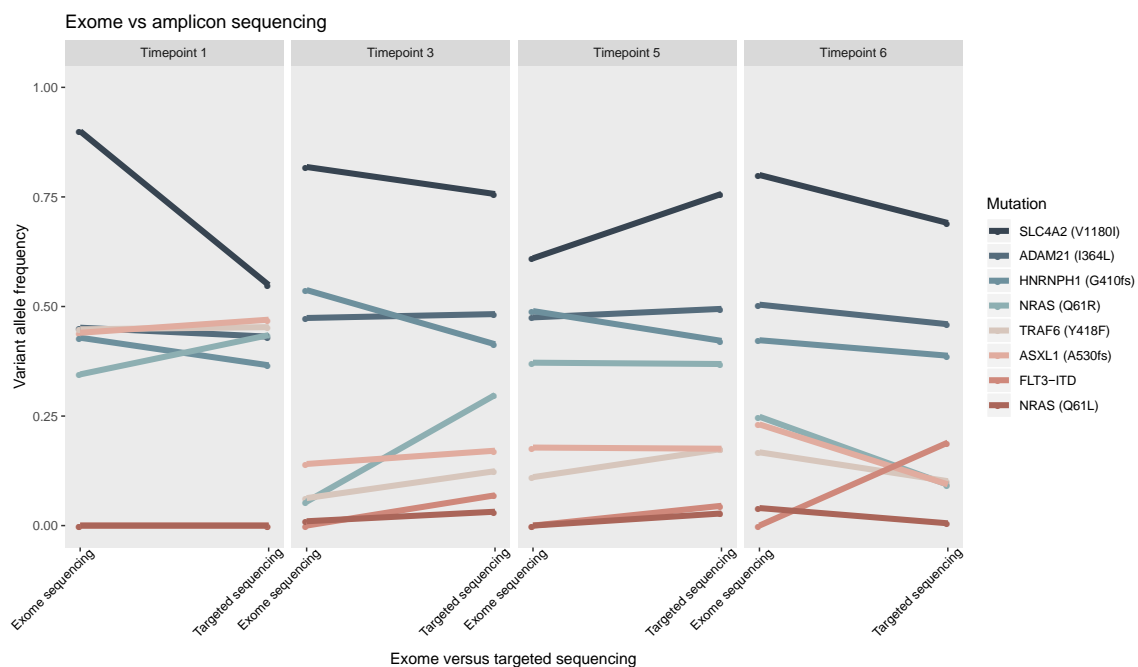
Supplementary table 1-TP1-PDX a: Exome sequencing Timepoint 1 - PDX a

Gene name	Transcript	Chr.	Position	Ref.	Var.	Effect	Amino acid change	Impact	Normal reads 1	Normal reads 2	Normal VAF	Tumour reads 1	Tumour reads 2	Tumour VAF	Somatic p-value
ADAM21	ENST00000267499	chr14	70925306	A	C	NON_SYNONYMOUS_CODING	I364L	MODERATE	27	1	3.57	14	14	50	0.00007
ASXL1	ENST00000421155	chr20	31021590	C	CGG	FRAME_SHIFT	A530A?	HIGH	8	0	0	27	23	46	0.01228
FAT4	ENST00000394329	chr4	126328128	C	T	NON_SYNONYMOUS_CODING	R1801W	MODERATE	36	0	0	56	33	37.08	0.00000
HNRNPH1	ENST00000329433	chr5	179043197	G	GC	FRAME_SHIFT	G410G?	HIGH	9	1	10	10	17	62.96	0.00504
KCNC2	ENST00000549446	chr12	75436913	G	A	NON_SYNONYMOUS_CODING	S630F	MODERATE	74	2	2.63	53	25	32.05	0.00000
NRAS	ENST00000369535	chr1	115256529	T	C	NON_SYNONYMOUS_CODING	Q61R	MODERATE	42	0	0	58	40	40.82	0.00000
STIL	ENST00000371877	chr1	47746300	A	T	NON_SYNONYMOUS_CODING	S610R	MODERATE	25	0	0	43	25	36.76	0.00009
TRAF6	ENST00000526995	chr11	36511704	T	A	NON_SYNONYMOUS_CODING	Y418F	MODERATE	76	0	0	100	47	31.97	0.00000

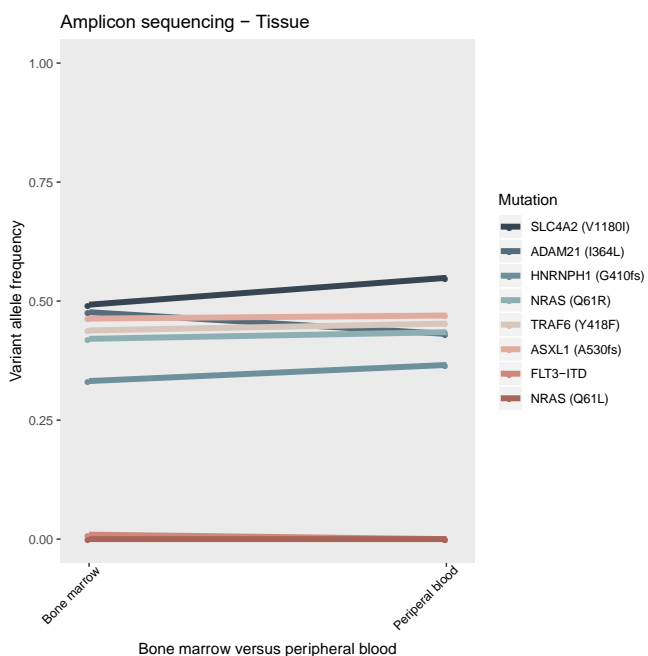
Supplementary table 1-TP6-PDX f: Exome sequencing Timepoint 6 - PDX f

Gene name	Transcript	Chr.	Position	Ref.	Var.	Effect	Amino acid change	Impact	Normal reads 1	Normal reads 2	Normal VAF	Tumour reads 1	Tumour reads 2	Tumour VAF	Somatic p-value
ATP5G2	ENST00000394349	chr12	54069941.00	TAG	T	FRAME_SHIFT	-12	HIGH	13	0	0	23	16	41.03	0.00364
EEF1D	ENST00000532741	chr8	144672215.00	C	T	NON_SYNONYMOUS_CODING	V63M	MODERATE	8	1	11.11	10	6	37.5	0.17373
ERI2	ENST00000357967	chr16	20809799.00	T	TCTA C	FRAME_SHIFT	G441G*?	HIGH	20	0	0	58	32	35.56	0.00045
ERI2	ENST00000357967	chr16	20809802.00	A	AAAT	CODON_CHANGE_PLUS_CODON_INSERTION	S440SF	MODERATE	20	0	0	50	32	39.02	0.00019
H2AFZP1	ENST00000416034	chr21	45466387.00	G	GT	SPLICE_SITE_ACCEPTOR	NA	HIGH	37	0	0	201	13	6.07	0.11896
HNRNPH1	ENST00000329433	chr5	179043197.00	G	GC	FRAME_SHIFT	G410G?	HIGH	9	1	10	53	42	44.21	0.03397
NAP1L5	ENST00000323061	chr4	89618758.00	GACCAG CCGCGC TGTCAG GGTC	G	CODON_DELETION	DPDSAAG43-	MODERATE	9	0	0	60	16	21.05	0.13764
NRAS	ENST00000369535	chr1	115256529.00	T	A	NON_SYNONYMOUS_CODING	Q61L	MODERATE	42	0	0	103	58	36.02	0.00000
SLC4A2	ENST00000413384	chr7	150773166.00	G	A	NON_SYNONYMOUS_CODING	V1180I	MODERATE	8	0	0	5	16	76.19	0.00030
TAS2R30	ENST00000539585	chr12	11286149.00	G	A	NON_SYNONYMOUS_CODING	T232I	MODERATE	86	0	0	329	20	5.73	0.01092
TMPRSS13	ENST00000445164	chr11	117789342.00	T	C	NON_SYNONYMOUS_CODING	Q78R	MODERATE	8	1	11.11	4	4	50	0.11086

Convergent molecular evolution in acute myeloid leukaemia Supplementary material



Supplementary figure 4: Comparison of VAF from exome sequencing and the capture based targeted sequencing. The FLT3-ITD was not called in the exome sequencing experiment accounting for the variation of this variant.



Supplementary figure 5: Comparison of VAF between a bone marrow sample and a peripheral blood sample from TP1 as assessed by the targeted sequencing panel, demonstrating high concordance.

Convergent molecular evolution in acute myeloid leukaemia
Supplementary material

Supplementary table 2: Targeted sequencing results

Sample ID	<i>SLC4A2</i> (V1180I)	<i>ADAM21</i> (I364L)	<i>HNRNP1</i> (G410fs)	<i>NRAS</i> (Q61R)	<i>TRAF6</i> (Y418F)	<i>ASXL1</i> (A530fs)	<i>FLT3</i> -ITD	<i>NRAS</i> (Q61L)
Control sample	0.11324	0.10883	0.05096	0	0	0	0	0
Timepoint 1	0.54893	0.43111	0.36585	0.4345	0.45278	0.46977	0	0
Timepoint 2	0.16899	0.1495	0.18868	0.10898	0	0.07696	0	0
Timepoint 3	0.7567	0.48261	0.41379	0.29794	0.12409	0.17104	0.06904	0
Timepoint 4	0.849	0.48006	0.41935	0.08261	0	0.07518	0.15028	0
Timepoint 5	0.75686	0.49437	0.42157	0.36863	0.17474	0.17546	0	0
Timepoint 6	0.69056	0.45956	0.38764	0.09326	0.10147	0.09393	0.18936	0
Timepoint 5	0.75686	0.49437	0.42157	0.36863	0.17474	0.17546	0	0
CD11c-	0.8017	0.49846	0.42045	0.15129	0.11801	0.09941	0.05036	0.13716
CD11c+	0.71515	0.48557	0.3663	0.4168	0.15013	0.19136	0	0.06409
CD19-CD7+	0.7788	0.47981	0.38344	0.25223	0.15963	0.185	0	0
CD19+CD7-	0.96901	0.47209	0.25	0	0	0	0.28989	0
CD19+CD7+	0.99676	0.50063	0.4	0	0	0	0.27027	0
CD3+	0.43283	0.32313	0.25828	0.21395	0.08086	0.06172	0	0
Timepoint 1 - PDX a (5166 I)	0	0.50976	0.54545	0.44843	0.45887	0.48173	0	0
Timepoint 1 - PDX b (4745 I)	0.919	0.53982	0.53846	0	0	0	0	0
Timepoint 1 - PDX c (248 I)	0.85185	0.6	0	0.37143	0	0	0	0
Timepoint 1 - PDX d (4744 I)	0.9625	0.26316	0	0	0	0	0	0.44928
Timepoint 1 - PDX e (245 I)	NA	NA	NA	NA	NA	NA	NA	NA
Timepoint 1 - PDX f (247 I)	NA	NA	NA	NA	NA	NA	NA	NA
Timepoint 1 - PDX g (246 I)	NA	NA	NA	NA	NA	NA	NA	NA
Timepoint 1 - PDX h (249 I)	NA	NA	NA	NA	NA	NA	NA	NA
Timepoint 3 - PDX a (249 II)	0.56911	0.2037	0	0.39785	0	0.0904	0	0.34409
Timepoint 3 - PDX b (4744 II)	0.72217	0.50333	0.40642	0.12877	0.10036	0.11719	0	0.37377
Timepoint 3 - PDX c (246 II)	0.64164	0.49695	0.51037	0.1409	0.14688	0.15472	0	0.36535
Timepoint 3 - PDX d (245 II)	0.71022	0.5	0.53631	0.15859	0.15008	0.16909	0	0.3507
Timepoint 3 - PDX e (248 II)	0.99625	0.51307	0.49558	0	0	0	0	0.54159
Timepoint 3 - PDX f (246 NM)	0	0	0	0	0	0	0	0
Timepoint 3 - PDX g (4734 II)	NA	NA	NA	NA	NA	NA	NA	NA
Timepoint 3 - PDX h (4745 II)	NA	NA	NA	NA	NA	NA	NA	NA
Timepoint 5 - PDX a (5166 III)	0.53366	0.48764	0.42581	0.42665	0.05351	0	0	0.12219
Timepoint 5 - PDX b (246 III)	0.57466	0.52176	0.49049	0.40288	0	0	0	0.1317
Timepoint 5 - PDX c (245 III)	0.47517	0.50595	0.45506	0.4508	0	0	0	0.06729
Timepoint 5 - PDX d (245 NM)	0.48922	0.49367	0.34211	0.48912	0	0	0	0
Timepoint 5 - PDX e (247 II)	0.73	0.50211	0.39	0.19872	0	0	0	0.33123
Timepoint 5 - PDX f (249 NM)	0.732	0.47298	0.47727	0.1939	0	0	0	0.31943
Timepoint 5 - PDX g (4745 III)	0.99813	0.4951	0.46341	0	0	0	0	0.52124
Timepoint 5 - PDX h (4744 III)	0.99384	0.49846	0.36681	0	0	0	0	0.51485
Timepoint 6 - PDX a (4744 IIII)	0.9965	0.4578	0.41155	0	0	0	0	0.5359
Timepoint 6 - PDX b (4745 IIII)	0.97086	0.49927	0.44019	0	0	0	0	0.51126
Timepoint 6 - PDX c (248 NM)	0.82625	0.5034	0.40945	0.14695	0.0611	0	0	0.36147
Timepoint 6 - PDX d (246 IIII)	0.53815	0.49315	0.44068	0.42811	0.09387	0.07878	0	0.09915
Timepoint 6 - PDX e (245 IIII)	0.67818	0.47895	0.44059	0.27601	0	0	0	0.23445
Timepoint 6 - PDX f (4734 IIII)	0.76108	0.49413	0.39147	0.1784	0	0	0	0.34431
Timepoint 6 - PDX g (247 NM)	NA	NA	NA	NA	NA	NA	NA	NA

Convergent molecular evolution in acute myeloid leukaemia
Supplementary material

Supplementary table 3:
Mass cytometry panel

Target (Clone)	Mass	Phenograph/ UMAP
CD235a (HIR2)	141	-
CD19 (HIB19)	142	X
CD117 (104D2)	143	X
CD11b (ICRF44)	144	X
CD4 (RPAT4)	145	X
CD64 (10.1)	146	X
CD7 (CD7-6B7)	147	X
CD34 (581)	148	X
CD61 (VI-PL2)	150	-
CD123 (6H6)	151	X
CD13 (WM15)	152	X
CD62L (DREG-56)	153	X
CD45 (HI30)	154	-
CD183 (G025H7)	156	-
CD33 (WM53)	158	X
CD11c (Bu15)	159	X
CD14 (M5E2)	160	X
CD15 (W6D3)	164	-
CD16 (3G8)	165	-
CD24 (ML5)	166	-
CD38 (HIT2)	167	X
CD25 (2A3)	169	-
CD3 (UCHT1)	170	X
CD185 (51505)*	171	
HLA-DR (L243)	174	X
CD184 (12G5)	175	X
CD56 (CMSSB)	176	X
Iridium	191	

The table presents the antibody panel used for mass cytometry staining and analysis. Clone of the antibody along with designation of type and mass number are listed for each antibody. The "Phenograph/UMAP" column indicates whether the channel was included in the phenograph and UMAP analysis.

Convergent molecular evolution in acute myeloid leukaemia
Supplementary material

Supplementary table 4: Distribution of meta clusters across the four primary samples

Sample	MC_01	MC_02	MC_03	MC_04	MC_05	MC_06	MC_07	MC_08	MC_09	MC_10	MC_11	MC_12
Timepoint 1	0.0	71.4	16.6	4.2	3.4	1.2	0.5	0.2	0.0	0.0	1.6	0.9
Timepoint 3	14.9	0.0	51.6	1.5	1.5	2.0	11.3	0.1	11.2	0.0	5.9	0.0
Timepoint 5	30.1	0.0	19.9	5.1	0.5	1.4	6.6	0.1	12.5	22.2	1.1	0.4
Timepoint 6	59.3	0.0	23.3	1.4	0.3	1.2	5.1	0.0	9.0	0.0	0.0	0.4

The raw dual counts were arcsinh transformed with a co-factor of 5 and each of the four samples were clustered by PhenoGraph (K = 30) grouping individual cells based on pattern similarities and differences with regards to 18 surface markers. The marker selection was based on heterogeneity in signal across the samples for optimal separation. The analysis resulted in the delineation of 65 clusters, with an average of 16.25 clusters identified per sample (TP1: 20, TP3:13, TP5:18, TP6:14). To compare phenotypic composition across the various samples we preceded with a meta clustering approach (K = 3). This resulted in the identification of a total of 12 meta clusters (MC), outlining the range of diverse phenotypes derived from the index patient's primary leukaemia samples. 6/12 MC were shared across all samples while 2/12 MC were identified only in a single sample (TP1:MC02, TP5:MC10).

Convergent molecular evolution in acute myeloid leukaemia
Supplementary material

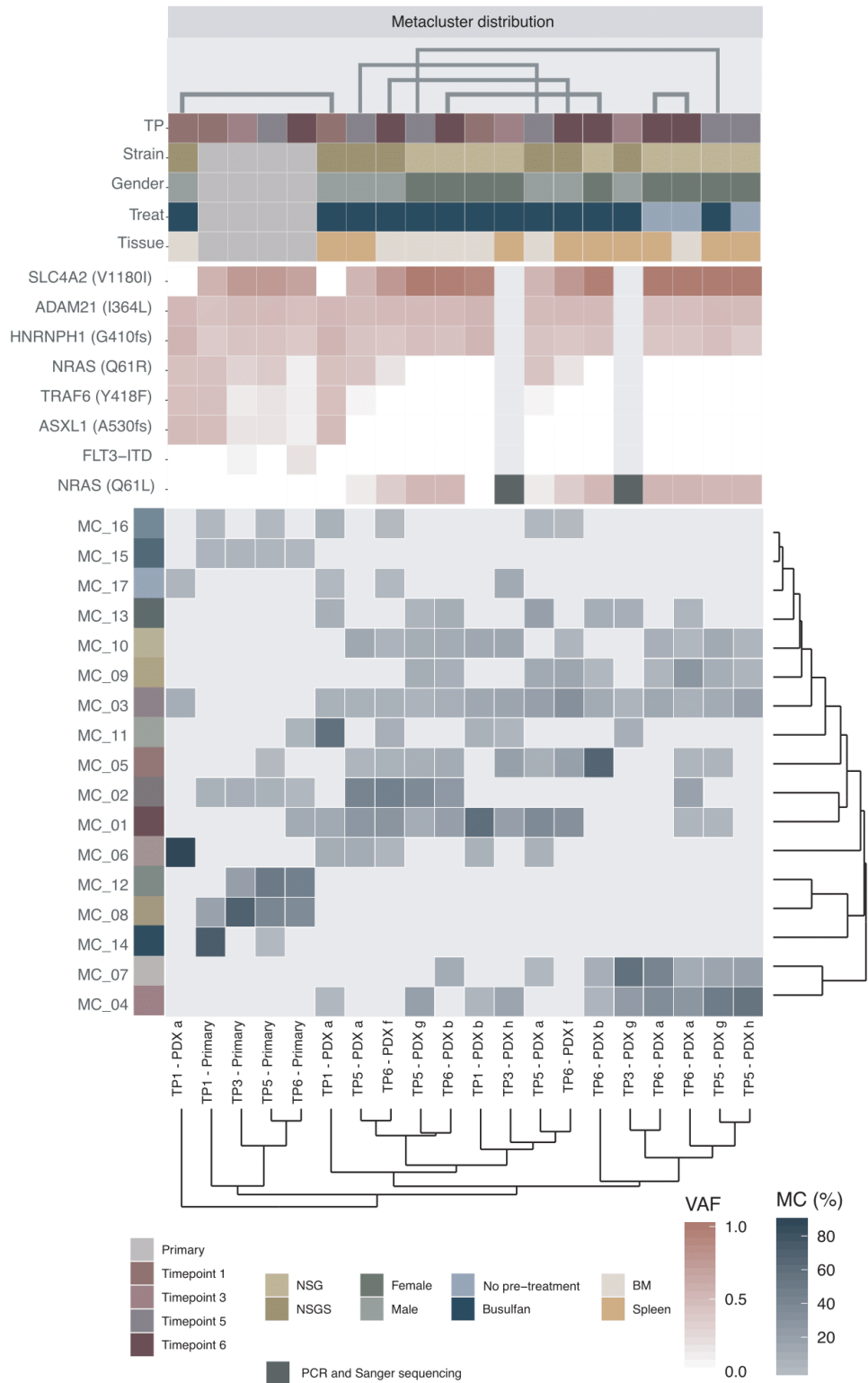
Supplementary table 5: Overview of the 32 PDXes

PDX ID	Cage	Cage-ID	Strain	Gender	Treat	Cells	OS (days)	Engraft.	CD45	CD45 conf.	PCR	PCR conf.	TS	TS conf.	DSRT	Mass-cyt.	WES	CNA
TP1 - PDX a	5166	I	NSGS	Male	15mg/kg	1,7 xE06	285	Yes	No	NA	S	OK	S	Yes	No	S & BM	S	No
TP1 - PDX b	4745	I	NSG	Female	25mg/kg	1,7 xE06	371	Yes	S	OK	BM	No	BM	Yes	No	BM	No	No
TP1 - PDX c	248	I	NSGS	Male	15mg/kg	1,4 xE06	238	Yes	NA	NA	S	No	S	Yes	No	No	No	No
TP1 - PDX d	4744	I	NSG	Female	0	1,7 xE06	455	Yes	NA	NA	BM	No	BM	Yes	No	No	No	No
TP1 - PDX e	245	I	NSGS	Female	25mg/kg	1,4 xE06	238	No	S	No	BM	No	BM	No	No	No	No	No
TP1 - PDX f	247	I	NSGS	Male	15mg/kg	1,4 xE06	151	No	BM	No	BM	No	BM	No	No	No	No	No
TP1 - PDX g	246	I	NSGS	Female	25mg/kg	1,4 xE06	342	No	S	No	BM	No	No	NA	No	No	No	No
TP1 - PDX h	249	I	NSGS	Male	15mg/kg	1,4 xE06	174	No	BM	No	BM	No	No	NA	No	No	No	No
TP3 - PDX a	249	II	NSGS	Male	15mg/kg	1,4 xE06	174	Yes	S	OK	S	No	S	Yes	No	No	No	No
TP3 - PDX b	4744	II	NSG	Female	0	1,7 xE06	455	Yes	No	NA	S	OK	S	Yes	S	No	No	No
TP3 - PDX c	246	II	NSGS	Female	25mg/kg	1,4 xE06	222	Yes	S	OK	S	OK	S	Yes	S	No	No	No
TP3 - PDX d	245	II	NSGS	Female	25mg/kg	1,4 xE06	214	Yes	S	OK	S	OK	S	Yes	S	No	No	No
TP3 - PDX e	248	II	NSGS	Male	15mg/kg	1,4 xE06	230	Yes	S	OK	S	OK	S	Yes	S	No	No	No
TP3 - PDX f	246	NM	NSGS	Female	25mg/kg	1,4 xE06	330	Yes	S	OK	S	No	S	Yes	S	No	No	No
TP3 - PDX g	4734	II	NSGS	Male	15mg/kg	1,7 xE06	108	Yes	S	OK	BM	OK	No	NA	No	S	No	No
TP3 - PDX h	4745	II	NSG	Female	25mg/kg	1,7 xE06	225	Yes	No	NA	BM	OK	No	NA	No	S	No	No
TP5 - PDX a	5166	III	NSGS	Male	15mg/kg	2,2 xE06	108	Yes	No	NA	S	OK	S	Yes	No	S & BM	No	S
TP5 - PDX b	246	III	NSGS	Female	25mg/kg	1,4 xE06	111	Yes	S	OK	S	OK	S	Yes	S	No	No	No
TP5 - PDX c	245	III	NSGS	Female	25mg/kg	1,4 xE06	106	Yes	S	OK	S	OK	S	Yes	S	No	No	No
TP5 - PDX d	245	NM	NSGS	Female	25mg/kg	1,4 xE06	105	Yes	S	OK	S	OK	S	Yes	No	No	No	No
TP5 - PDX e	247	II	NSGS	Male	15mg/kg	1,4 xE06	151	Yes	S	OK	S	OK	S	Yes	S	No	No	No
TP5 - PDX f	249	NM	NSGS	Male	15mg/kg	1,4 xE06	158	Yes	S	OK	S	OK	S	Yes	No	No	No	No
TP5 - PDX g	4745	III	NSG	Female	25mg/kg	2,2 xE06	178	Yes	S	OK	S	OK	S	Yes	S	S & BM	No	No
TP5 - PDX h	4744	III	NSG	Female	0	2,2 xE06	234	Yes	S	OK	S	OK	S	Yes	No	S	No	S
TP6 - PDX a	4744	IIII	NSG	Female	0	3,2 xE06	166	Yes	S	OK	S	OK	S	Yes	S	S & BM	No	No
TP6 - PDX b	4745	IIII	NSG	Female	25mg/kg	3,2 xE06	158	Yes	S	OK	S	OK	S	Yes	S	S & BM	No	No
TP6 - PDX c	248	NM	NSGS	Male	15mg/kg	1,4 xE06	111	Yes	S	OK	S	OK	S	Yes	No	No	No	No
TP6 - PDX d	246	IIII	NSGS	Female	25mg/kg	1,4 xE06	123	Yes	S	OK	S	OK	S	Yes	S	No	No	No
TP6 - PDX e	245	IIII	NSGS	Female	25mg/kg	1,4 xE06	105	Yes	S	OK	S	OK	S	Yes	S	No	No	No
TP6 - PDX f	4734	IIII	NSGS	Male	15mg/kg	3,2 xE06	108	Yes	S	OK	S	OK	S	Yes	S	S & BM	S	No
TP6 - PDX g*	247	NM	NSGS	Male	15mg/kg	1,4 xE06	148	NA	NA	NA	NA	NA	NA	NA	NA	NA	NA	No

Treat: dosage of busulfan prior to injection of primary cells. OS: overall survival. Engraft: engraftment rate. S: Spleen. BM: Bone marrow. Conf: confirmation. TS: targeted sequencing. DSRT: drug sensitivity and resistance testing. Mass-cyt: mass-cytometry. WES: whole exome sequencing. CNA: copy number analysis.

*Mouse found dead in cage. Excluded from all analyses.

Convergent molecular evolution in acute myeloid leukaemia
Supplementary material



Supplementary Figure 6: Hierarchical clustering (Euclidean distance, complete linkage) of the relative meta-cluster distribution. Blue colour indicates higher relative distribution and grey lower relative distribution. Empty tiles indicate that no cells were counted within that MC in the respective sample. The numerical values are presented in supplementary table 6. The MC names and colour indicators refer to the data presented in Figure 5A and 5B. The colour indicators at the top of the plot show sample characteristics, as presented in figure 3, indicating sample timepoint, strain, sex and pre-treatment. The red-white heat indicates VAF from the targeted sequencing experiment.

Convergent molecular evolution in acute myeloid leukaemia
Supplementary material

Supplementary table 6: Distribution of meta clusters across the primary and PDX samples

Sample	MC_01	MC_02	MC_03	MC_04	MC_05	MC_06	MC_07	MC_08	MC_09	MC_10	MC_11	MC_12	MC_13	MC_14	MC_15	MC_16	MC_17
Timepoint 1 - Patient	0.0	5.6	0.0	0.0	0.0	0.0	0.0	17.1	0.0	0.0	0.0	0.0	0.0	72.4	4.1	0.9	0.0
Timepoint 1 - PDX a (5166 I) BM	0.0	0.0	8.7	0.0	0.0	88.1	0.0	0.0	0.0	0.0	0.0	0.0	0.0	0.0	0.0	0.0	3.3
Timepoint 1 - PDX a (5166 I) Spleen	11.3	0.0	6.0	1.3	0.0	9.4	0.0	0.0	0.0	0.0	57.9	0.0	7.2	0.0	0.0	6.5	0.5
Timepoint 1 - PDX b (4745 I) BM	59.8	0.0	12.6	2.8	0.0	5.5	0.0	0.0	0.0	12.8	6.5	0.0	0.0	0.0	0.0	0.0	0.0
Timepoint 3 - Patient	0.0	7.4	0.0	0.0	0.0	0.0	0.0	68.9	0.0	0.0	0.0	20.2	0.0	0.0	3.5	0.0	0.0
Timepoint 3 - PDX g (4734 II) Spleen	0.0	0.0	3.5	23.5	0.0	0.0	57.0	0.0	0.0	0.0	7.9	0.0	8.1	0.0	0.0	0.0	0.0
Timepoint 3 - PDX h (4745 II) Spleen	20.0	0.0	15.4	15.7	19.4	0.0	0.0	0.0	0.0	15.0	3.3	0.0	0.0	0.0	0.0	0.0	11.1
Timepoint 5 - Patient	0.0	6.4	0.0	0.0	0.2	0.0	0.0	40.0	0.0	0.0	0.0	50.1	0.0	0.6	2.2	0.5	0.0
Timepoint 5 - PDX a (5166 III) BM	37.2	0.0	18.7	0.0	7.2	5.2	0.8	0.0	11.3	0.0	0.0	0.0	18.9	0.0	0.0	0.8	0.0
Timepoint 5 - PDX a (5166 III) Spleen	26.3	42.2	5.8	0.0	3.2	10.0	0.0	0.0	0.0	12.5	0.0	0.0	0.0	0.0	0.0	0.0	0.0
Timepoint 5 - PDX g (4745 III) BM	9.7	36.6	4.2	19.6	7.1	0.0	0.0	0.0	9.7	9.4	0.0	0.0	3.8	0.0	0.0	0.0	0.0
Timepoint 5 - PDX g (4745 III) Spleen	2.1	0.0	10.4	48.1	3.5	0.0	15.3	0.0	8.7	11.9	0.0	0.0	0.0	0.0	0.0	0.0	0.0
Timepoint 5 - PDX h (4744 III) Spleen	0.0	0.0	18.7	55.5	0.0	0.0	18.9	0.0	3.7	3.2	0.0	0.0	0.0	0.0	0.0	0.0	0.0
Timepoint 6 - Patient	11.0	1.2	0.0	0.0	0.0	0.0	0.0	36.1	0.0	0.0	4.6	45.7	0.0	0.0	1.5	0.0	0.0
Timepoint 6 - PDX a (4744 IIII) BM	2.4	18.2	5.9	27.7	2.7	0.0	10.9	0.0	27.4	1.5	0.0	0.0	3.3	0.0	0.0	0.0	0.0
Timepoint 6 - PDX a (4744 IIII) Spleen	0.0	0.0	13.5	35.1	0.0	0.0	42.0	0.0	2.6	6.8	0.0	0.0	0.0	0.0	0.0	0.0	0.0
Timepoint 6 - PDX b (4745 IIII) BM	19.6	24.6	7.4	0.0	10.2	0.0	11.0	0.0	6.9	10.3	0.0	0.0	10.0	0.0	0.0	0.0	0.0
Timepoint 6 - PDX b (4745 IIII) Spleen	0.0	0.0	10.5	3.9	66.5	0.0	8.6	0.0	1.7	0.0	0.0	0.0	8.8	0.0	0.0	0.0	0.0
Timepoint 6 - PDX f (4734 IIII) BM	28.0	45.7	6.4	0.0	5.2	2.5	0.0	0.0	0.0	4.2	7.2	0.0	0.0	0.0	0.0	0.3	0.4
Timepoint 6 - PDX f (4734 IIII) Spleen	31.9	0.0	31.3	0.0	19.0	0.0	0.0	0.0	14.9	2.6	0.0	0.0	0.0	0.0	0.0	0.3	0.0

All of the data, including the events collected from the four primary samples, were then reanalysed following the same analytic approach applied for the assessment of the primary samples. Due to substantial variation in acquired events across the 20 files subsampling was performed with a maximum event count of 10 000 (range: 2 221-10 000) per file. Individual PhenoGraph clustering (K: 30) resulted in identification of 228 clusters with an average of 11.4 clusters identified per sample (range: 8-16). Meta clustering (K:5) resulted in identification of 17 MC, with each sample characterised by a relative contribution of 3-9 MC (total:128, mean per sample 6.4) at a relative contribution ranging from 0.16 to 88.08% (mean: 15.6%).

Convergent molecular evolution in acute myeloid leukaemia
Supplementary material

Supplementary table 7: Expression of human CD45

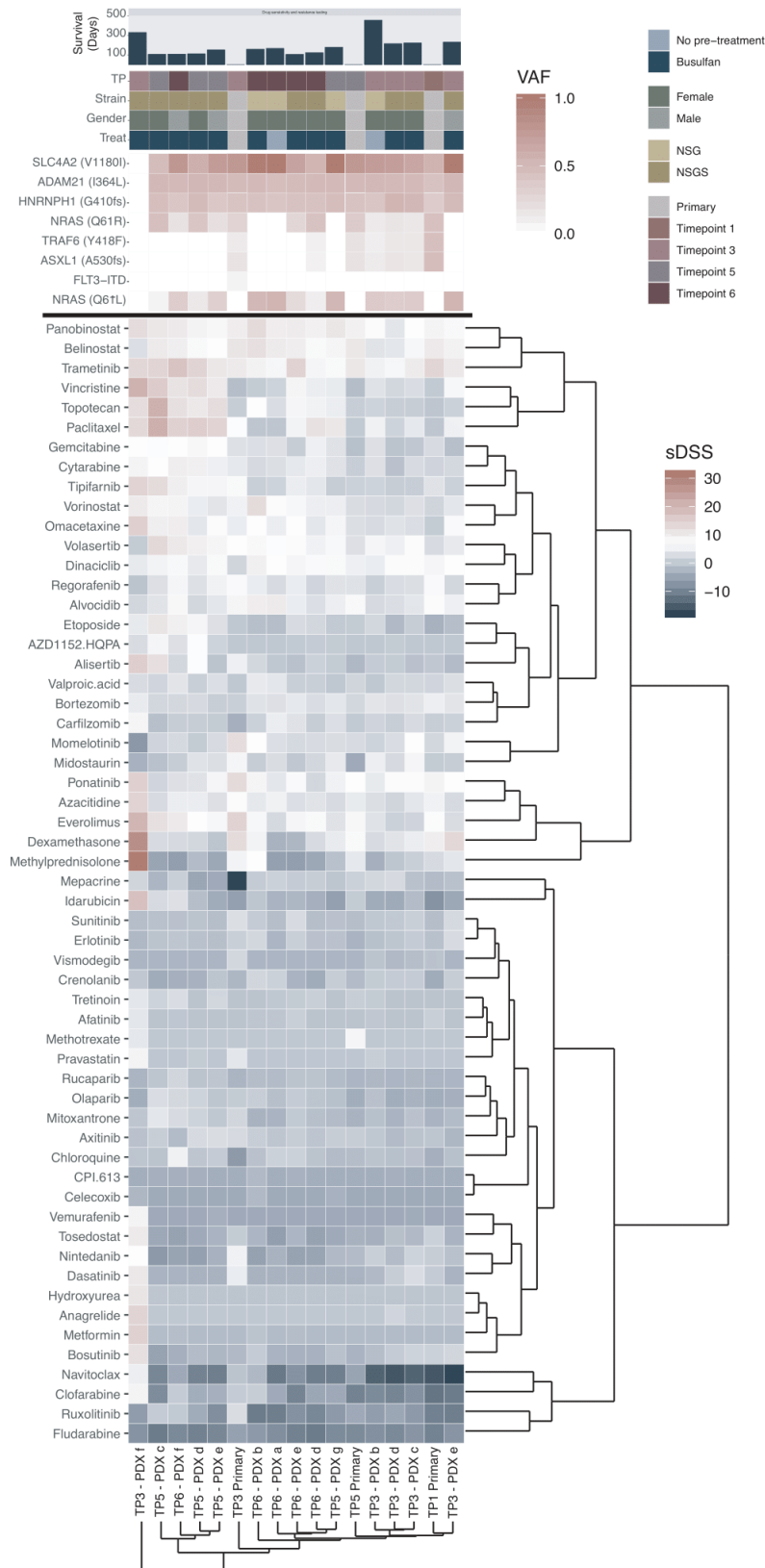
PDX ID	CD45	CD45 confirm	Human	Mouse	Fraction
Timepoint 1 - PDX a (5166 I)	No	NA	NA	NA	NA
Timepoint 1 - PDX b (4745 I)	Spleen	OK	348	26536	1.3
Timepoint 1 - PDX c (248 I)	No	NA	NA	NA	NA
Timepoint 1 - PDX d (4744 I)	No	NA	NA	NA	NA
Timepoint 1 - PDX e (245 I)	Spleen	No	2	47854	0.0
Timepoint 1 - PDX f (247 I)	Bone marrow	No	3	18706	0.0
Timepoint 1 - PDX g (246 I)	Spleen	No	38	55297	0.1
Timepoint 1 - PDX h (249 I)	Bone marrow	No	46	185	19.9
Timepoint 3 - PDX a (249 II)	Spleen	OK	559	20515	2.7
Timepoint 3 - PDX b (4744 II)	No	NA	NA	NA	NA
Timepoint 3 - PDX c (246 II)	Spleen	OK	20604	366	98.3
Timepoint 3 - PDX d (245 II)	Spleen	OK	21232	1671	92.7
Timepoint 3 - PDX e (248 II)	Spleen	OK	19060	1098	94.6
Timepoint 3 - PDX f (246 NM)	Spleen	OK	14650	4155	77.9
Timepoint 3 - PDX g (4734 II)	Spleen	OK	1468	22665	6.1
Timepoint 3 - PDX h (4745 II)	No	NA	NA	NA	NA
Timepoint 5 - PDX a (5166 III)	No	NA	NA	NA	NA
Timepoint 5 - PDX b (246 III)	Spleen	OK	16240	2170	88.2
Timepoint 5 - PDX c (245 III)	Spleen	OK	3998	1012	79.8
Timepoint 5 - PDX d (245 NM)	Spleen	OK	4593	5249	46.7
Timepoint 5 - PDX e (247 II)	Spleen	OK	18991	1321	93.5
Timepoint 5 - PDX f (249 NM)	Spleen	OK	714	1921	27.1
Timepoint 5 - PDX g (4745 III)	Spleen	OK	20588	475	97.7
Timepoint 5 - PDX h (4744 III)	Spleen	OK	22744	247	98.9
Timepoint 6 - PDX a (4744 IIII)	Spleen	OK	20844	229	98.9
Timepoint 6 - PDX b (4745 IIII)	Spleen	OK	328	40	89.1
Timepoint 6 - PDX c (248 NM)	Spleen	OK	7292	12572	36.7
Timepoint 6 - PDX d (246 IIII)	Spleen	OK	15997	2220	87.8
Timepoint 6 - PDX e (245 IIII)	Spleen	OK	1576	537	74.6
Timepoint 6 - PDX f (4734 IIII)	Spleen	OK	17508	1988	89.8
Timepoint 6 - PDX g (247 NM)	NA	NA	NA	NA	NA
Timepoint 6 - PDX h (NA NA)	NA	NA	NA	NA	NA

Convergent molecular evolution in acute myeloid leukaemia
Supplementary material

Supplementary table 8: Overview of drugs in the drug sensitivity and resistance screen

Drug Class	Drug name	Drug subclass	FIMM ID
A. Conv. Chemo	Bortezomib	Proteasome inhibitor (26S subunit)	FIMM000287-002
A. Conv. Chemo	Carfilzomib	Proteasome inhibitor (20S subunit)	FIMM100346-001
A. Conv. Chemo	Chloroquine	Antimalaria agent; chemo/radio sensitizer	FIMM100371-002
A. Conv. Chemo	Clofarabine	Antimetabolite; Purine analog	FIMM000321-002
A. Conv. Chemo	Cytarabine	Antimetabolite, interferes with DNA synthesis	FIMM000406-003
A. Conv. Chemo	Etoposide	Topoisomerase II inhibitor	FIMM023814-002
A. Conv. Chemo	Fludarabine	Antimetabolite; Purine analog	FIMM023828-002
A. Conv. Chemo	Gemcitabine	Antimetabolite; Nucleoside analog	FIMM023798-002
A. Conv. Chemo	Hydroxyurea	Antineoplastic agent	FIMM000983-003
A. Conv. Chemo	Idarubicin	Topoisomerase II inhibitor	FIMM000173-003
A. Conv. Chemo	Mitoxantrone	Topoisomerase II inhibitor	FIMM000490-004
A. Conv. Chemo	Omacetaxine	Protein synthesis inhib (80 S ribosome)	FIMM100379-001
A. Conv. Chemo	Paclitaxel	Mitotic inhibitor, taxane microtubule stabilizer	FIMM000491-003
A. Conv. Chemo	Topotecan	Topoisomerase I inhibitor. Camptothecin analog	FIMM000556-005
A. Conv. Chemo	Vincristine	Mitotic inhibitor. Vinca alkaloid microtubule depolymerizer	FIMM000337-003
B. Kinase inhibitor	Afatinib	EGFR inhibitor	FIMM003710-001
B. Kinase inhibitor	Alisertib	Aurora A inhibitor	FIMM003761-001
B. Kinase inhibitor	Alvocidib	CDK inhibitor	FIMM003725-001
B. Kinase inhibitor	Axitinib	VEGFR, PDGFR, KIT inhibitor	FIMM003778-001
B. Kinase inhibitor	Bosutinib	Abl, Src inhibitor	FIMM003780-002
B. Kinase inhibitor	Crenolanib	PDGFRA and PDGFRB inhibitor	FIMM109464-001
B. Kinase inhibitor	Dasatinib	Abl, Src, Kit, EphR... Inhibitor	FIMM003775-001
B. Kinase inhibitor	Dinaciclib	CDK inhibitor	FIMM109460-001
B. Kinase inhibitor	Erlotinib	EGFR inhibitor	FIMM000183-003
B. Kinase inhibitor	Midostaurin	Flt3, PKC, PKA, S6K and EGFR inhibitor	FIMM100362-001
B. Kinase inhibitor	Momelotinib	JAK1 & 2 inhibitor	FIMM109441-001
B. Kinase inhibitor	Nintedanib	FLT3, VEGFR, PDGFR, FGFR inhibitor	FIMM100389-001
B. Kinase inhibitor	Ponatinib	FLT3, Broad TK inhibitor	FIMM003730-001
B. Kinase inhibitor	Regorafenib	B-Raf, c-Kit, VEGFR2 inhibitor	FIMM100364-001
B. Kinase inhibitor	Ruxolitinib	JAK1&2 inhibitor	FIMM003756-001
B. Kinase inhibitor	Sunitinib	FLT3, Broad TK inhibitor	FIMM023820-002
B. Kinase inhibitor	Trametinib	MEK1/2 inhibitor	FIMM003751-001
B. Kinase inhibitor	Vemurafenib	B-Raf(V600E) inhibitor	FIMM003767-001
B. Kinase inhibitor	Volasertib	PLK1 inhibitor	FIMM100375-001
C. Rapalog	Everolimus	binds FKBP12, causes inhibition of mTORC1	FIMM003755-001
D. Immunomodulatory	Dexamethasone	Immunosuppressant; glucocorticoid	FIMM000227-002
D. Immunomodulatory	Methylprednisolone	Immunosuppressant	FIMM000484-002
E. Differentiating/ epigenetic modifier	Azacitidine	Nucleoside analog DNA methyl transferase inhibitor	FIMM023825-003
E. Differentiating/ epigenetic modifier	Belinostat	HDAC inhibitor	FIMM003744-001
E. Differentiating/ epigenetic modifier	Olaparib	PARP inhibitor	FIMM003790-001
E. Differentiating/ epigenetic modifier	Panobinostat	HDAC inhibitor	FIMM003783-001
E. Differentiating/ epigenetic modifier	Rucaparib	PARP inhibitor	FIMM003736-001
E. Differentiating/ epigenetic modifier	Tipifarnib	Farnesyltransferase inhibitor	FIMM003728-001
E. Differentiating/ epigenetic modifier	Tretinoin	Retinoic acid receptor agonist	FIMM000249-004
E. Differentiating/ epigenetic modifier	Vorinostat	HDAC inhibitor	FIMM003787-001
G. Apoptotic modulator	Navitoclax	Bcl-2/Bcl-xL inhibitor	FIMM003707-001
H. Metabolic modifier	Methotrexate	Antimetabolite; Anti-folate agent	FIMM000649-004
H. Metabolic modifier	Pravastatin	HMG CoA reductase inhibitor	FIMM003569-002
J. NSAID	Celecoxib	Selective COX-2 inhibitor	FIMM000298-004
X. Other	Anagrelide	PDE-3, PLA2 inhibitor	FIMM000171-004
X. Other	Mepacrine	Unclear. PLA2 inhibitor. NF-kB inhibitor, p53 activator	FIMM000528-005
X. Other	Metformin	Unknown	FIMM109466-001
X. Other	Tosedostat	Aminopeptidase inhibitor	FIMM100402-001
X. Other	Vismodegib	Smothered (Hh) inhibitor	FIMM003793-001

Convergent molecular evolution in acute myeloid leukaemia
Supplementary material



Supplementary Figure 7: Hierarchical clustering (Euclidean distance, complete linkage) of drug sensitivity scores of 58 anti-cancer compounds in primary and PDX-derived samples. The colour gradient represents the sDSS values (DSS-median DSS of two normal cryopreserved and thawed BM samples). Red signifies a high sDSS and sensitivity, while blue signifies a negative sDSS and a relative resistance to the drug. The indicators above the heatmap show sample identity, as presented in figure 3. All PDX samples are derived from spleen.

Convergent molecular evolution in acute myeloid leukaemia
Supplementary material

Supplementary table 9: Overview of drugs scored as sensitive (sDSS ≥5) in at least half of all screened samples

Drug name	Belinostat	Dinaciclib	Everolimus	Omacetaxine	Paclitaxel	Panobinostat	Ponatinib	Topotecan	Trametinib	Volasertib	Vorinostat
Drug subclass	HDAC inhibitor	CDK inhibitor	binds FKBP12, causes inhibition of mTORC1	Protein synthesis inhib (80 S ribosome)	Mitotic inhibitor, taxane microtubule stabilizer	HDAC inhibitor	FLT3, Broad TK inhibitor	Topoisomerase I inhibitor. Camptothecin analog	MEK1/2 inhibitor	PLK1 inhibitor	HDAC inhibitor
Primary TP1	9,97	5,83	7,19	0,54	-0,05	8,23	8,42	-0,09	13,65	2,71	1,85
Primary TP3	10,87	1,90	14,30	4,88	6,61	9,51	12,63	0,88	9,81	6,75	5,56
Primary TP5	10,45	5,27	7,82	3,23	0,28	8,91	6,84	1,10	10,35	3,38	2,94
Timepoint 3 - PDX d (245 II) spleen	4,15	6,55	1,40	3,55	1,65	4,05	7,35	1	6,05	5,20	2,15
Timepoint 3 - PDX f (246 NM) spleen	3,35	4,65	19,90	14,95	12,95	12,35	14,85	12,20	13,35	0,50	9,85
Timepoint 3 - PDX c (246 II) spleen	6,15	7,15	1,80	3,15	4,35	6,75	7,25	0,80	9,75	7,30	3,45
Timepoint 5 - PDX e (247 II) spleen	6,95	7,45	6,10	7,35	14,05	7,85	5,85	12,20	10,25	8,10	3,95
Timepoint 3 - PDX e (248 II) spleen	8,65	6,85	2,90	6,45	5,35	6,35	7,05	1,50	10,15	4,60	4,25
Timepoint 3 - PDX b (4744 II) spleen	3,75	4,85	3,60	2,65	5,45	7,35	4,65	1,70	5,45	5,90	2,45
Timepoint 5 - PDX d (245 NM) spleen	9,15	5,75	11,00	7,55	18,35	11,05	1,25	14,50	15,75	9,50	7,55
Timepoint 5 - PDX c (245 III) spleen	9,85	5,75	11,60	9,15	21,15	10,35	1,95	20,80	13,75	13	8,05
Timepoint 5 - PDX g (4745 III) spleen	8,05	7,55	3,70	5,95	10,25	10,55	5,55	5	7,55	6,20	5,15
Timepoint 6 - PDX e (245 IIII) spleen	9,25	5,95	5,90	6,95	5,65	9,65	6,45	5,90	14,25	6,50	6,15
Timepoint 6 - PDX d (246 IIII) spleen	7,45	6,45	7,50	4,25	11,35	8,75	2,15	5,60	5,95	5,50	5,15
Timepoint 6 - PDX f (4734 IIII) spleen	9,15	6,25	10,10	9,35	14,55	9,95	3,45	11,60	17,15	10,10	8,35
Timepoint 6 - PDX a (4744 IIII) spleen	9,75	6,75	2,50	5,05	-0,05	9,35	4,05	3,10	6,05	6,60	7,25
Timepoint 6 - PDX b (4745 IIII) spleen	11,75	8,95	6,10	6,95	-0,05	12,75	8,15	7,10	8,65	7,60	12,55