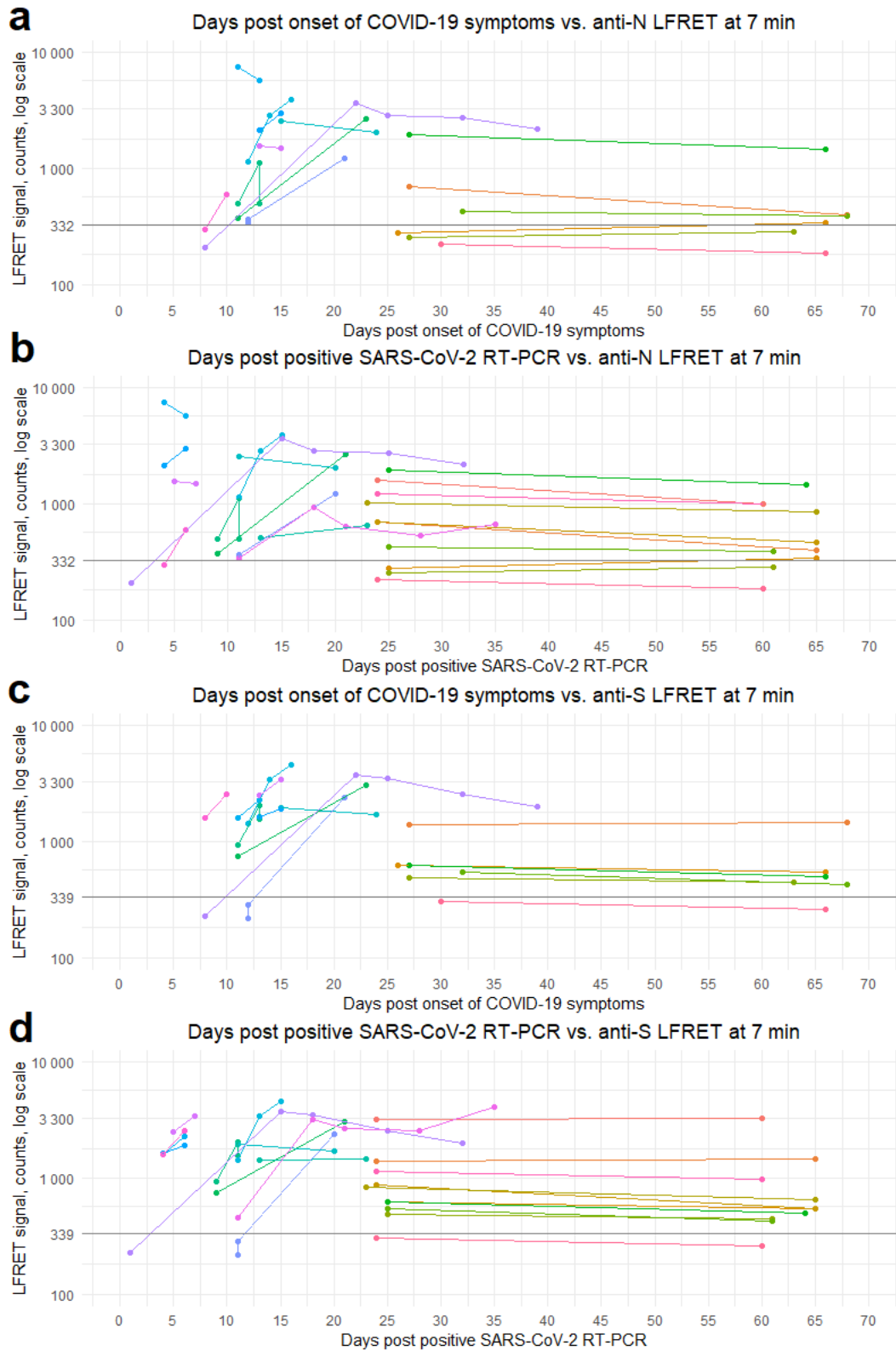
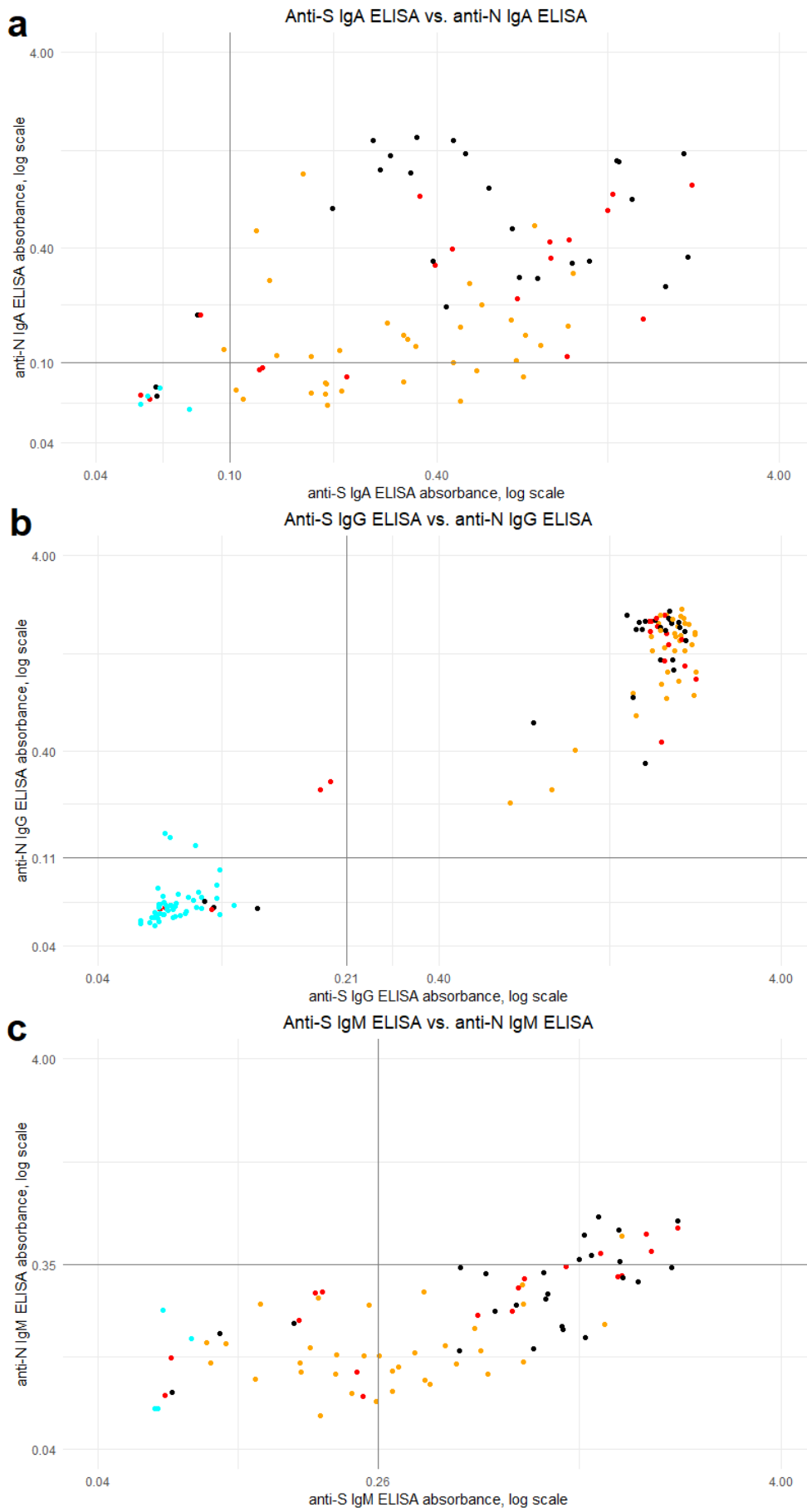


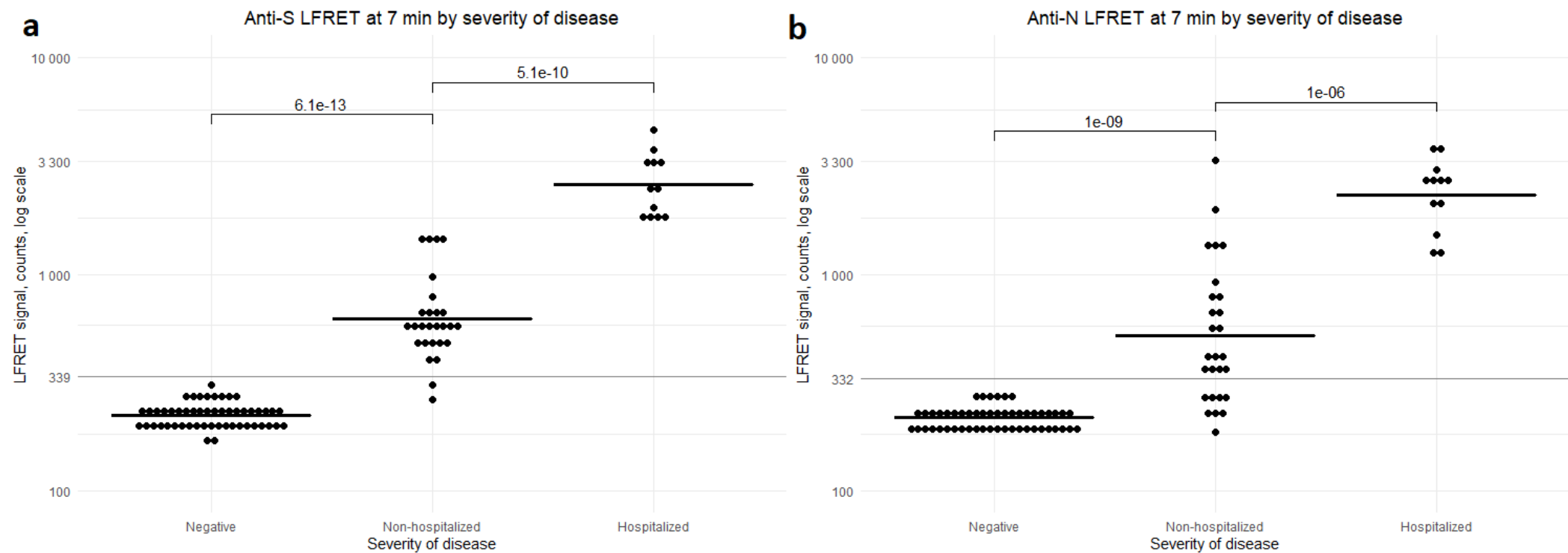
1 Supplementary Information



2
 3 **Figure S1.** Development of LFRET signals in follow-up samples. a) Days post onset of
 4 COVID-19 symptoms (x-axis) vs anti-N LFRET signal (y-axis) (N=38 samples from 16
 5 individuals). b) Days post positive SARS-CoV-2 PCR (x-axis) vs anti-N LFRET signal (y-
 6 axis) (N=53 samples from 22 individuals). c) Days post onset of COVID-19 symptoms (x-
 7 axis) vs anti-S LFRET signal (y-axis) (N=38 samples from 16 individuals). d) Days post
 8 positive SARS-CoV-2 PCR (x-axis) vs anti-S LFRET signal (y-axis) (N=53 samples from
 9 22 individuals). Horizontal line is the LFRET cutoff. S = spike glycoprotein. N =
 10 nucleocapsid protein. LFRET = protein L-based time-resolved Förster resonance energy
 11 transfer immunoassay.

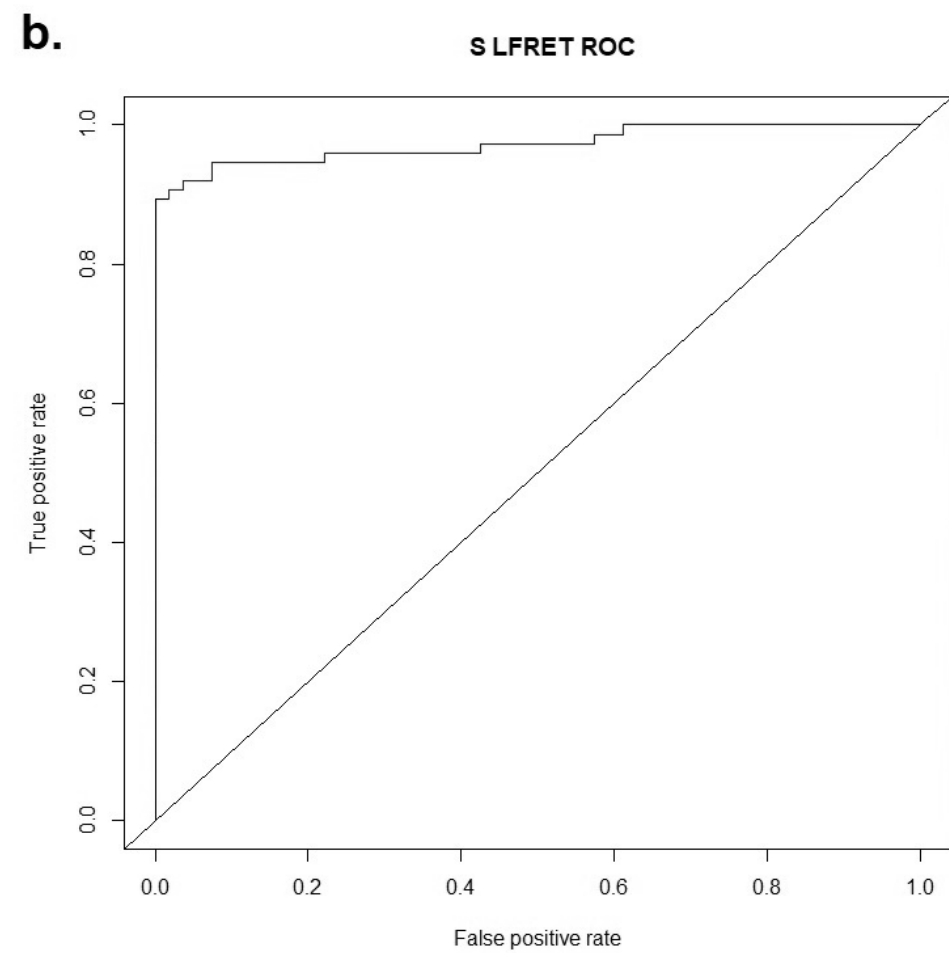
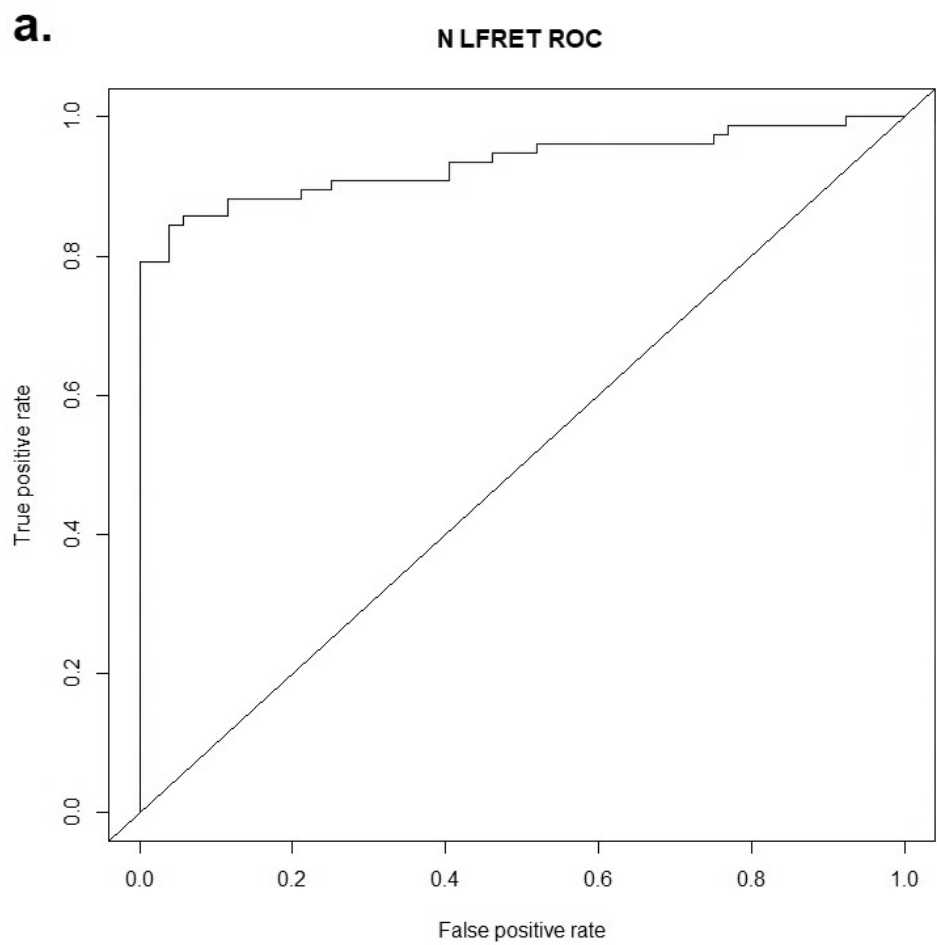


12
 13 **Figure S2.** SARS-CoV-2 spike glycoprotein (S) versus nucleocapsid protein (N)
 14 ELISA. a) anti-S vs. anti-N IgA ELISA results (N=81, R=0.31) b) anti-S vs. anti-N IgG
 15 ELISA results (N=129, R=0.90). c) anti-S vs. anti-N IgM ELISA results (N=81,
 16 R=0.79). On the x-axis, anti-S ELISA absorbance, on the y-axis anti-N ELISA
 17 absorbance. Colour of the dot indicates SARS-CoV-2 PCR result and disease severity:
 18 cyan = PCR negative; yellow = non-hospitalized, PCR-positive; red = non-ICU
 19 hospitalized, PCR positive; black = hospitalized in ICU, PCR positive. Horizontal and
 20 vertical lines indicate ELISA cutoffs. R = Pearson's correlation coefficient.



21

22 **Figure S3.** LFRET vs. severity of disease in samples taken after two weeks from onset of disease. a) Severity of disease (x-axis) vs. anti-S LFRET (y-axis) b) Severity
 23 of disease (x-axis) vs. anti-N LFRET (y-axis). Negative = samples from comprehensively SARS-CoV-2 seronegative individuals (N=52). Non-hospitalized = samples
 24 from non-hospitalized COVID-19 patients (N=27). Samples from hospitalized individuals with COVID-19 (N=12) are grouped together to include samples from
 25 individuals treated outside of ICU (N=3) and in ICU (N=9). Horizontal lines indicate LFRET cutoffs (thin grey lines) and mean LFRET signal (thick black lines).
 26 Logarithmic scale is used on the y-axis. Differences between groups are statistically significant, as indicated by the p values within the figure. S = spike glycoprotein.
 27 N = nucleocapsid protein. LFRET = protein L–based time-resolved Förster resonance energy transfer immunoassay.



28

29 **Figure S4.** Receiver operating character (ROC) curves for LFRET. a) anti-N LFRET. AUC = 0.94. b) anti-S LFRET. AUC= 0.97. False positive rate on the x-axis,
 30 true positive rate on the y-axis. Enzyme immunoassay (IgA, IgG and IgM results combined) is used as the reference. N = nucleocapsid protein. S = spike glycoprotein.
 31 LFRET = protein L–based time-resolved Förster resonance energy transfer immunoassay.

32 **Table S1.** Agreement between ELISA and LFRET. Ig ELISA = IgA, IgG and IgM
 33 results combined: if any of these are positive, total Ig is considered positive. N/S
 34 ELISA/LFRET: if either N or S ELISA/LFRET is positive, the N/S result is considered
 35 positive. Number of samples in brackets. S = spike glycoprotein. N = nucleocapsid
 36 protein. LFRET = protein L–based time-resolved Förster resonance energy transfer
 37 immunoassay. ELISA = enzyme immunoassay. MNT = microneutralization titer.

	anti-N Ig ELISA	anti-N IgG ELISA	anti-S Ig ELISA	anti-S IgG ELISA	anti N/S Ig ELISA	anti N/S IgG ELISA
N LFRET	88% (113/129)	89% (115/129)	91% (117/129)	90% (116/129)	87% (112/129)	89% (115/129)
S LFRET	93% (120/129)	95% (122/129)	96% (124/129)	98% (127/129)	92% (119/129)	95% (122/129)
N/S LFRET	95% (122/129)	96% (124/129)	98% (126/129)	97% (125/129)	94% (121/129)	96% (124/129)

38 **Table S2.** Detailed information on samples with discordance between PCR, LFRET and ELISA results.
 39 Sample = sample id. NAT = nucleic acid testing result for SARS-CoV-2. S = spike glycoprotein. N =
 40 nucleocapsid protein. LFRET = protein L-based time-resolved Förster resonance energy transfer
 41 immunoassay. ELISA = enzyme immunoassay. MNT = microneutralization titer. + = result above cutoff.
 42 - = result below cutoff. Hosp. = Hospitalized, non-ICU. ICU = Hospitalized in ICU. Home = non-
 43 hospitalized. Neg. = no disease. NA = not available.

44

Sample	NAT	Severity of disease	Days from onset of symptoms	Days from NAT	anti-S LFRET	anti-N LFRET	anti-S ELISA IgA	anti-S ELISA IgG	anti-S ELISA IgM	anti-N ELISA IgA	anti-N ELISA IgG	anti-N ELISA IgM	MNT
71	+	Hosp.	8	2	-	-	-	-	-	+	-	-	<20
65	+	ICU	8	1	-	-	-	-	-	-	-	-	<20
72	+	ICU	8	2	-	-	-	-	-	-	-	-	<20
70	+	ICU	13	4	-	-	-	-	-	+	-	-	20
7	+	Home	30	24	-	-	+	+	-	+	+	-	<20
24	+	Home	66	60	-	-	-	+	-	+	+	-	<20
86	+	Hosp.	NA	2	-	-	-	-	-	-	-	-	<20
82	-	Neg.	27	25	-	-	-	-	-	-	+	-	NA
92	-	Neg.	134	NA	-	-	-	-	-	-	+	-	<20
103	NA	Neg.	NA	NA	-	-	-	-	NA	NA	+	NA	<20
121	NA	Neg.	NA	NA	-	-	+	-	NA	NA	-	NA	<20

45 **Table S3.** Sensitivity and specificity of LFRET/ELISA in detecting microneutralization
 46 positive (titer ≥ 20) samples. S = spike glycoprotein. N = nucleocapsid protein. LFRET
 47 = protein L-based time-resolved Förster resonance energy transfer immunoassay.
 48 ELISA = enzyme immunoassay. Only 4 negative samples were tested in anti-N IgA and
 49 IgM as well as anti-S IgM ELISA, and thus specificity of these assays needs to be
 50 assessed with caution.

	anti-S LFRET	anti-N LFRET	anti-S IgA ELISA	anti-S IgG ELISA	anti-S IgM ELISA	anti-N IgA ELISA	anti-N IgG ELISA	anti-N IgM ELISA
Sensitivity	98%	92%	98%	98%	79%	88%	98%	20%
Specificity	91%	96%	85%	87%	93%	64%	82%	100%

51