

Acquisition and carriage dynamics of fluoroquinolone resistant Enterobacteriaceae at individual and household levels

Patrick Musicha^{1,2}, Andrew J. Stewardson³, Yin Mo^{1,2}, Jascha Vervoort⁴, Niels Adriaenssens^{4,5}, Samuel Coenen^{4,5}, Maciek Godycki-Cwirko⁶, Anna Kowalczyk⁶, Christine Lammens⁴, Surbhi Malhotra-Kumar⁴, Herman Goossens⁴, Stephan Harbarth⁷, and Ben S. Cooper^{1,2}

¹Centre for Tropical Medicine and Global Health, Nuffield Department of Medicine, University of Oxford, Oxford, United Kingdom

²Mahidol-Oxford Tropical Medicine Research Unit, Mahidol University, Bangkok, Thailand

³Department of Infectious Diseases, The Alfred Hospital and Central Clinical School, Monash University, Melbourne, Victoria, Australia

⁴Vaccine & Infectious Disease Institute, University of Antwerp, Antwerp, Belgium

⁵Department of Primary and Interdisciplinary Care, University of Antwerp, Antwerp, Belgium

⁶Centre for Family and Community Medicine, Medical University of Lodz, Lodz, Poland

⁷Division of Infectious Diseases, University of Geneva Hospitals and Faculty of Medicine, Geneva, Switzerland

Supplementary Results

Acquisition and carriage dynamics of FQR-E using a three states individual level model

We also considered the density of FQR-E in stools with an individual-level model with three states: not colonised, low density colonisation, and high density colonisation. The baseline rate of transitioning from no colonisation to low density colonisation was 0.4 (95% CrI=[0.10,1.54]); the colonisation density increased to high from low at a baseline rate of 0.07 (95% CrI=[0.04,0.14]) per day. Individuals transitioned from the high density colonisation state to the low density colonisation state at a baseline rate of 0.06 (95%CrI=[0.03,0.10]) per day and were cleared of any detectable colonisation at a daily rate of 3.37 , although this was associated with a high amount of uncertainty (95% CrI=[0.83, 13.04]).

Supplementary Figures

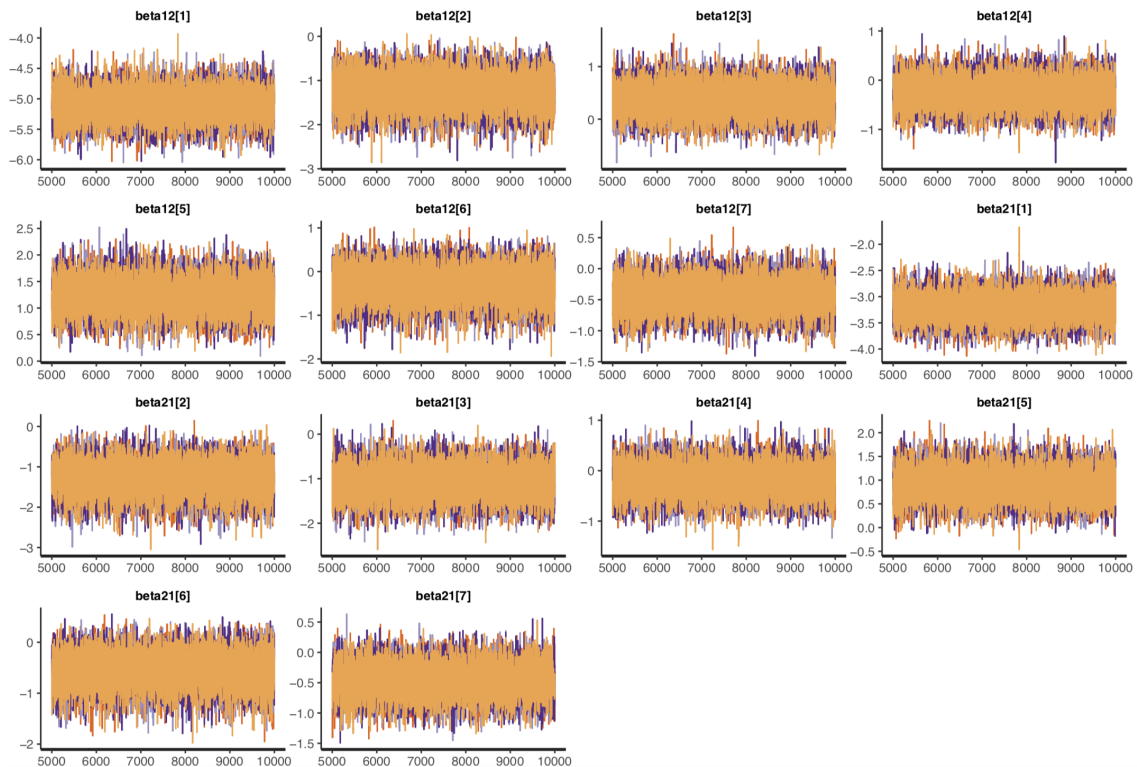


Figure S1: Traceplots for the Hamiltonian Markov chains, showing sampling behaviour and mixing across chains under the two-states individual level model

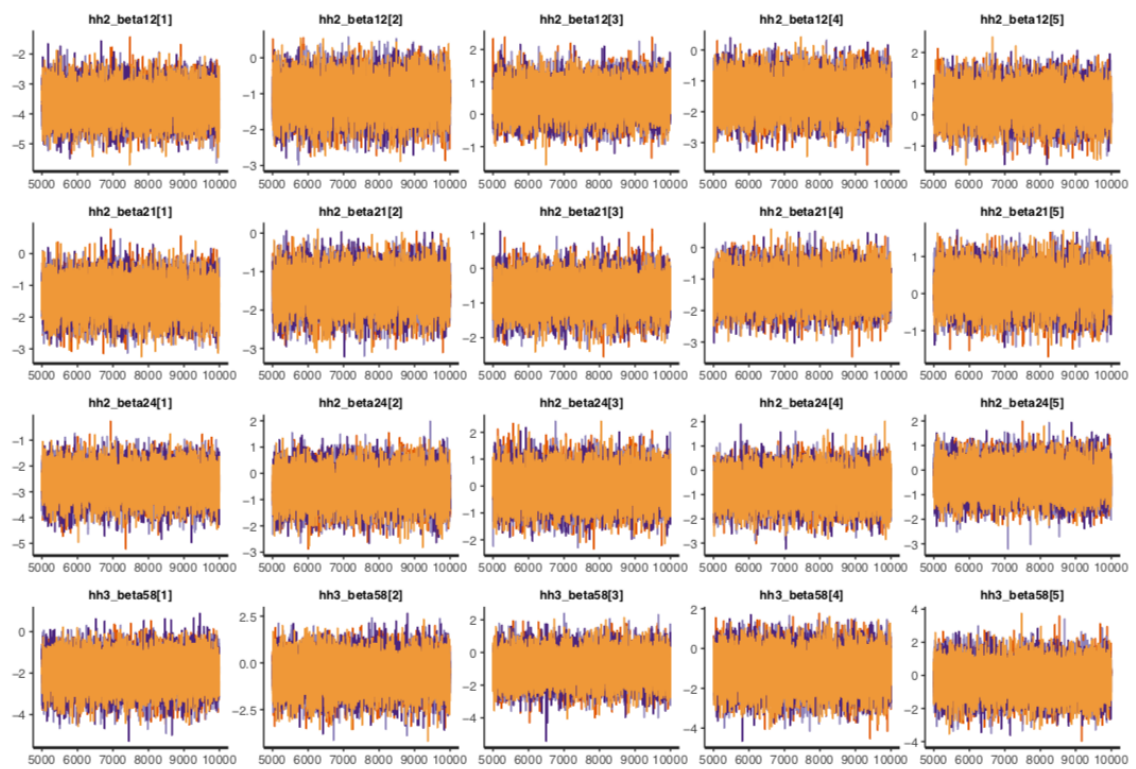


Figure S2: Traceplots for the Hamiltonian Markov chains, showing parameter value sampling behaviour and mixing across chains under the household level transmission model.