

Supplementary Materials for

Quantifying SARS-CoV-2 spread in Switzerland based on genomic sequencing data

Authors: Sarah Nadeau^{1,2}, Christiane Beckmann³, Ivan Topolsky^{1,2}, Timothy Vaughan^{1,2}, Emma Hodcroft^{2,4}, Tobias Schär¹, Ina Nissen¹, Natascha Santacroce¹, Elodie Burcklen¹, Pedro Ferreira^{1,2}, Kim Philipp Jablonski^{1,2}, Susana Posada-Céspedes^{1,2}, Vincenzo Capece¹, Sophie Seidel^{1,2}, Noemi Santamaria de Souza⁵, Julia M. Martinez-Gomez⁶, Phil Cheng⁶, Philipp Bosshard⁶, Mitchell P. Levesque⁶, Verena Kufner⁷, Stefan Schmutz⁷, Maryam Zaheri⁷, Michael Huber⁷, Alexandra Trkola⁷, Samuel Cordey⁸, Florian Laubscher⁸, Ana Rita Gonçalves⁹, Karoline Leuzinger^{10,11}, Madlen Stange¹⁰, Alfredo Mari¹⁰, Tim Roloff¹⁰, Helena Seth-Smith¹⁰, Hans Hirsch¹⁰, Adrian Egli¹⁰, Maurice Redondo³, Olivier Kobel³, Christoph Noppen³, Niko Beerenwinkel^{1,2}, Richard A. Neher^{2,4}, Christian Beisel¹, and Tanja Stadler^{1,2,*}

Affiliations:

¹Department of Biosystems Science and Engineering, ETH Zürich, Basel, Switzerland.

²SIB Swiss Institute of Bioinformatics, Basel, Switzerland.

³Viollier AG, Allschwil, Switzerland.

⁴Biozentrum, University of Basel, Basel, Switzerland.

⁵Institute of Microbiology, D-BIOL, ETH Zürich, Zürich, Switzerland.

⁶Department of Dermatology, University of Zürich, University of Zürich Hospital, Switzerland.

⁷Institute of Medical Virology, University of Zürich, Zürich, Switzerland.

⁸Laboratory of Virology, Division of Infectious Diseases and Division of Laboratory Medicine, University Hospitals of Geneva & Faculty of Medicine, University of Geneva, Geneva, Switzerland.

⁹Swiss National Reference Centre for Influenza, University Hospitals of Geneva, Geneva, Switzerland.

¹⁰University Hospital Basel, Basel, Switzerland.

¹¹Transplantation & Clinical Virology, Department Biomedicine, University of Basel, Basel, Switzerland.

*Correspondence to: tanja.stadler@bsse.ethz.ch

This PDF file includes:

Materials and Methods
Supplementary Text
Figs. S1 to S13
Tables S1 to S3

Materials and Methods

Genome sequencing

Most of the Swiss SARS-CoV-2 genome samples analyzed were provided by Viollier AG, a Swiss medical diagnostics company. RNA was extracted from patient naso- or oral-pharyngeal swabs using either the Abbott m2000sp or Seegene STARMag 96x4 Universal Cartridge RNA extraction kit. One aliquot of RNA extract was used for a qPCR test by Viollier and the remaining material from PCR-positive samples was transferred to the Genomics Facility Basel for whole-genome sequencing. Amplicon sequencing was performed using the ARCTIC v3 primer scheme, which yields tiled amplicons of approximately 400bp (12). Libraries were sequenced on an Illumina MiSeq machine, resulting in 2 x 251 base reads. We used V-pipe (13) for raw read quality control, mapping to the reference genome MN908947.3, and consensus base calling. Positions with <5x coverage were not called and positions with >5% minor base composition were assigned the appropriate ambiguity code. We rejected samples where <90% of quality-controlled reads did not map to the reference or with < 20,000 bases called. The consensus sequences we generated have been made publicly available on both GISAID (Accession IDs are given in Table S1) and ENA (samples are registered under study PRJEB38472).

Genome quality control

We supplemented our Swiss data with other Swiss sequences and foreign sequences available via the “nextfasta” downloaded resource on GISAID (accessed 10. October 2020). We removed non-human samples, duplicates, samples lacking a complete date specification, and samples with sequencing issues flagged by the Nextstrain team (14). We aligned the sequences to the reference genome MN908947.3 using MAFFT. We retained all Swiss sequences ≥ 20 kbases long and foreign sequences ≥ 27 kbases long. We then masked sites with high homoplasmy or other known problems (15, 16). Finally, we used the Nextstrain diagnostic script to additionally exclude sequences with unexpectedly high divergence from the reference, clusters of SNPs in close proximity, or >3000 missing bases (criterion relaxed to >10000 missing bases for Swiss sequences). Sequence counts after each quality-control step are given in Table S2.

Subsampling

For analysis, we considered all quality control-passed sequences from Switzerland (“Swiss dataset”) along with the most genetically similar sequences from abroad (“similarity dataset”) and a subset of context sequences from countries likely to have exported cases to Switzerland (“context dataset”).

The similarity dataset (selected using the Nextstrain priority protocol) was used to identify Swiss transmission chains. Our rationale is that diversity sampled primarily within Switzerland and not abroad is likely the result of within-Switzerland transmission.

The context dataset was additionally used for parsimony-based inference of the origin locations of Swiss introductions. For this purpose, we wanted to include a random sample of sequences from the pool of cases abroad who might seed Swiss transmission chains.

To determine how many sequences to take from each country and each month for the context dataset, we estimated the expected number of infected individuals arriving in Switzerland over time (Fig. S12). We calculated this to be the number of arrivals from each country in a month multiplied by the average proportion of the source population infectious on any given day in that month. We estimated the number of arrivals to be the number of hotel arrivals from a country plus the number of cross-border commuter permits held by its residents (17, 18). We estimated the number of infectious individuals each day by assuming individuals were infectious for 10 days prior to case confirmation. Confirmed case and national population data were taken from the ECDC (19). Our estimates for the number of infected individuals arriving in Switzerland each month are intended only to be proportional to the expected number of arrivals, subject to several simplifying assumptions. Namely, the propensity of an infected individual to travel does not vary by country, travel between Switzerland and other countries is reciprocal (since we do not have data on the number of Swiss travelling abroad who then re-enter the country), and finally that the number of confirmed cases in each country is a constant proportion of the true number of cases over time.

Once we identified the number of context sequences to take from each country in each month we randomly selected sequences publicly available on GISAID. For months without enough sequences, we took extra sequences from the following month if possible and the preceding month if necessary. The numbers of sequences included from each country in each month is shown in Fig. S4. We applied this sub-sampling protocol three times with different random seeds. As an additional sensitivity check, we also padded the estimated imports per country and month by 1 before determining the number of context sequences to take. Based on the padded numbers, we randomly chose another set of context sequences. In all, we analyzed three replicate context datasets and one context dataset based on padded imports. In the main text, we discuss results based on only one of the replicate datasets; results from the other datasets are qualitatively similar (Fig. S8 – S10).

The final dataset includes 2,114 Swiss sequences, 1,000 genetically similar sequences, and 1,099 context sequences (approximately 4,190 sequences in all depending on the context dataset, since some context sequences were also selected as genetically similar sequences).

Clade assignment

We assigned the genome sequences from our nation-wide genome sequencing project to Nextstrain clades using the Nextclade tool (20). We classified each lineage in the Swiss tree that crossed our date threshold from the early to the summer epidemic as belonging to the same clade as the majority of the tips descending from it. These assignments were unambiguous with the exception of 3-6 lineages, depending on the date threshold used.

Tree building

We built a maximum-likelihood tree using IQ-TREE (21) and then estimated branch lengths for the maximum-likelihood topology using least-squares dating (22). For the initial maximum-likelihood tree inference, we used an HKY substitution model with empirical base frequencies and 4 gamma rate categories. To root the tree, we specified an outgroup defined by the most recent common ancestor (MRCA) of two early sequences from Nextstrain clades 19A and 19B (EPI_ISL_402125 and EPI_ISL_406798). This placed the root of the tree roughly between the 19A/B clades and ingroup clade 20A (Nextstrain clade notation), or the L, S, O, V clades and

ingroup clades G, GR, and GH (GISAID clade notation). For least-squares dating, we assumed a strict molecular clock with a minimum mutation rate of 0.0008 substitutions/site/year. We additionally assumed the root date to be between 15. Nov. and 24. Dec. 2019 (roughly in line with estimates provided by (23)) and set the minimum branch length to zero. Sequences that violated the strict clock assumption (z -score threshold > 3) were removed and near-zero branches ($\leq 1.7 \times 10^{-5}$ substitutions/site/year) were collapsed into polytomies, reflecting the fact that the sequence data is not sufficient to resolve the ordering of these transmission events. Given the root date constraints, the mutation rate conformed to the lower bound of 0.0008 with extremely narrow confidence intervals. Confidence intervals for node dates were generated in LSD by re-sampling branch lengths 100 times under a lognormal relaxed clock model with standard deviation 0.4.

Identifying SARS-CoV-2 introductions into Switzerland

In the tree based on sequences from the Swiss, similarity, and context datasets we define Swiss *transmission chains* as maximal sets of at least 2 Swiss sequences satisfying the following criteria: the Swiss sequences are part of a clade in the tree and the subtree spanned by these Swiss sequences is monophyletic upon removing (a) up to 3 export events where (b) only one export event may occur along each internal branch. Exports are defined to be clades containing non-Swiss sequences. We chose a conservative value for criterion (b) while still allowing some export events and note that the number of inferred transmission chains is robust to different values for criterion (a) given criterion (b) (Fig. S13).

We repeated our analysis interpreting polytomies in two ways. Once, we split Swiss clades descending from polytomies unless the polytomy only had a single non-Swiss descendent (see criterion (b)). Alternatively, we aggregated all Swiss clades descending from polytomies into a single transmission chain. These procedures represent two plausible extremes, the first being maximum introductions and minimum local transmission and the second being minimum introductions and maximum local transmission.

We refer to any Swiss sequence not falling into a Swiss transmission chain as a Swiss *singleton*. We assume each singleton and each transmission chain represent an independent introduction of SARS-CoV-2 into Switzerland; together these are called Swiss *introductions*.

We inferred the source location of each introduction with a parsimony-based approach. For this, we used only tips in the context dataset and ignored tips in the similarity dataset. Otherwise, over-sequenced locations would show up too often as sources (24). Our procedure is as follows: we begin by labelling the MRCA of Swiss transmission chains and all subtending nodes in the tree (excepting exported clades) as Swiss. Switzerland was excluded as a possible location for all other nodes. Given these constraints, we calculate the parsimony score for each possible location at each remaining node. Among the possible locations, we also include a “dummy” location to record the maximum parsimony score. So, in a first step we calculate parsimony scores up the tree. In a second step, we convert the parsimony scores at each node to location weights by taking the difference to the “dummy” score. Thus, locations with no support in the subtending tree are given a weight 0 and supported locations are weighted by the number of location changes they prevent. Importantly, these weights are determined through the parsimony score of the subtree descending the considered node and not of the full tree. Finally, we normalized the scores to 1 for each node. In summary, locations that would require more state changes in the subtending

tree are down-weighted. For the summary figure Fig. 2b, we conservatively count each polytomy with Swiss descendants as a single introduction.

Phylodynamic analysis

Finally, after grouping sequences into introductions using our clustering procedure, we jointly infer the effective reproductive number and the sampling proportion from all clusters as in (25). We perform inference using the BDSKY model (26) in BEAST2 (27), which assumes a birth-death population dynamical model. Each cluster was assumed to result from an independent birth-death process having its own start time, but sharing all other parameters with the processes associated with the other clusters. We fixed the expected become-uninfectious rate to 36.5 per year, which corresponds to an average time to becoming uninfectious of 10 days. We assumed an HKY (28) nucleotide substitution model with 4 gamma rate categories to account for site-to-site rate heterogeneity (29). We assumed a strict clock with a rate fixed to 8×10^4 substitutions per site per year. The effective reproductive number (Fig. 4a) and the sampling proportion (Fig. 4b) were allowed to vary in a piecewise-constant fashion in intervals of 1 week. An independent smoothing prior was applied to the natural logarithm of each of these time-varying parameters (30). So as to constrain both the relative sizes of the change between weeks and the absolute reproductive number and sampling proportion values, we used smoothing priors formulated as the product between a) a Gaussian penalty on the differences between the logarithm of values for adjacent weeks and b) a function of the value taken in each week. For this function, we used the probability density of a $\text{LogNormal}(0.8, 0.5)$ distribution in the case of the R_e values, and the density of a $\text{Beta}(1, 99)$ distribution in the case of the sampling proportion values. An $\text{Exp}(1)$ hyperprior was applied to the variance of the Gaussian component of each smoothing prior.

Supplementary Text

Sampling saturation

To evaluate the completeness of our sample set, we ask whether we could expect to detect even more introductions with additional sampling. We first consider all Swiss sequences and record the number of Swiss transmission chains and Swiss singletons inferred by our clustering procedure. Then we randomly subsample 90%, 80%...10% of the Swiss sequences and record how many of the Swiss transmission chains and Swiss singletons were sampled. From Fig. S2a, we observe that under the “minimum introductions, maximum Swiss transmission” assumption, the number of Swiss introductions does not saturate as we sample more sequences, thus we speculate that we did not sample the majority of imports. This conclusion is even stronger under the “maximum introductions, minimum Swiss transmission” assumption (Fig. S2b).

Evaluation of Test, Trace, quarantine, isolate program

To evaluate how well Swiss introductions were contained after detection, we counted the number of secondary cases arising more than 10 days after the index case was tested positive. We assume that it takes 10 days from infection to case confirmation, so all confirmed cases testing positive within 10 days of a positive test of the index case were infected before the transmission chain was detected (i.e. before the positive test of the index case). Importantly, these infections stemming from imported outbreaks cannot be avoided by contact tracing. On the other hand, in an ideal test, trace, and isolate scenario in which we could immediately identify and isolate all

contacts of the index case (and contacts of contacts, as necessary), we would avoid all cases which are confirmed more than 10 days after the index case testing positive. Of course, these contact tracing demands are unrealistic, particularly if there was a large amount of spread before the index case was tested.

Assessing epidemic spread between Swiss cantons

To test whether sequences from the different Swiss cantons clustered together in the same transmission chains more or less often than we would expect by chance, we performed two different permutation tests. To test for more-than-expected-mixing, we permuted canton labels under a model in which the maximum number of mixing events were allowed, meaning we assumed each individual in a mixed-canton transmission chain was equally likely to have been infected from another canton. To test for less-than-expected mixing, we permuted under a model in which the minimum number of mixing events was allowed, meaning we assumed that only one individual per canton in mixed-canton transmission chains was infected from another canton. Practically, this means we ran one test in which we permuted individuals and one test in which we collapsed individuals from the same canton in the same transmission chain to a single unit before permuting. We permuted canton labels across only transmission chains consisting of at least two cantons and keep the permutation if all transmission chains are again composed of at least two cantons.

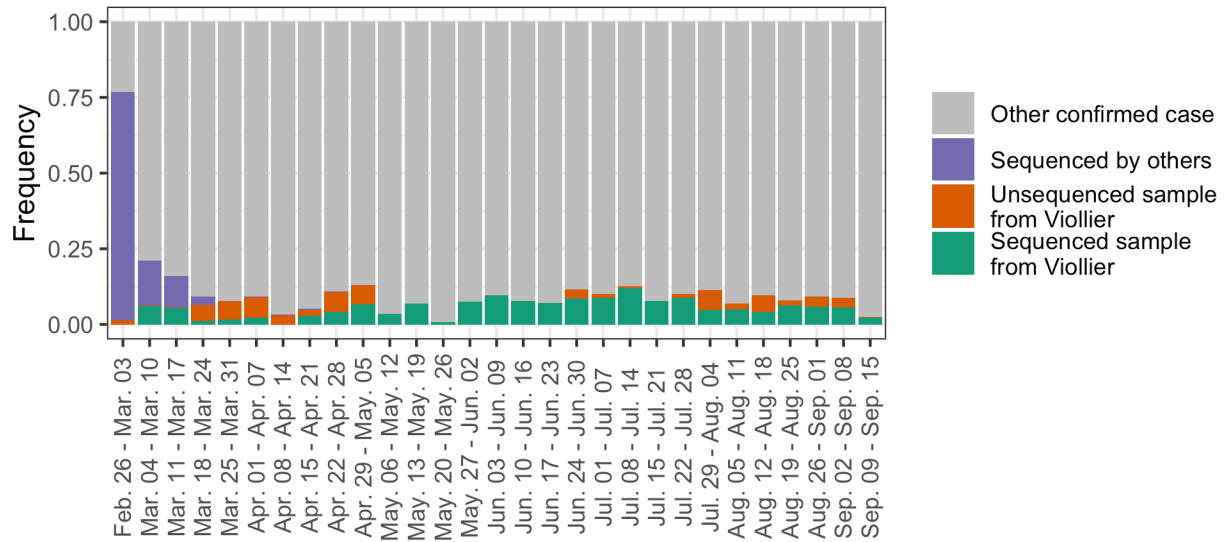


Fig. S1.

Summary of Swiss sequencing efforts. We tally the number of sequences generated each week from our nation-wide genome sequencing project, the number of not-yet sequenced samples we received from the diagnostics company Viollier, and the number of sequences generated by others and submitted to GISAID. These tallies are displayed as a fraction of the number of confirmed cases each week.

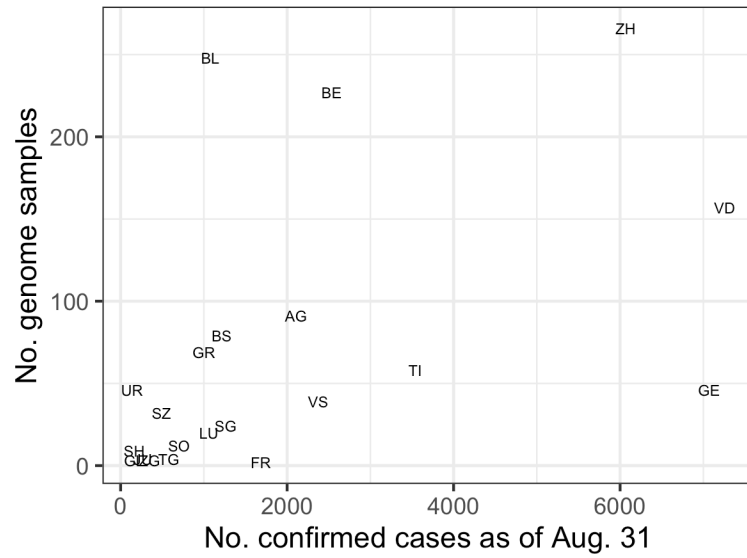


Fig. S2.

Representativeness of our nation-wide genome sequencing project at the cantonal level. The number of genome sequences we generated (y-axis) is plotted against the cumulative number of confirmed cases from each canton as of Aug. 31 (x-axis). Points are labelled with standard abbreviations of the canton names.

a) 2020-05-01

b) 2020-07-01

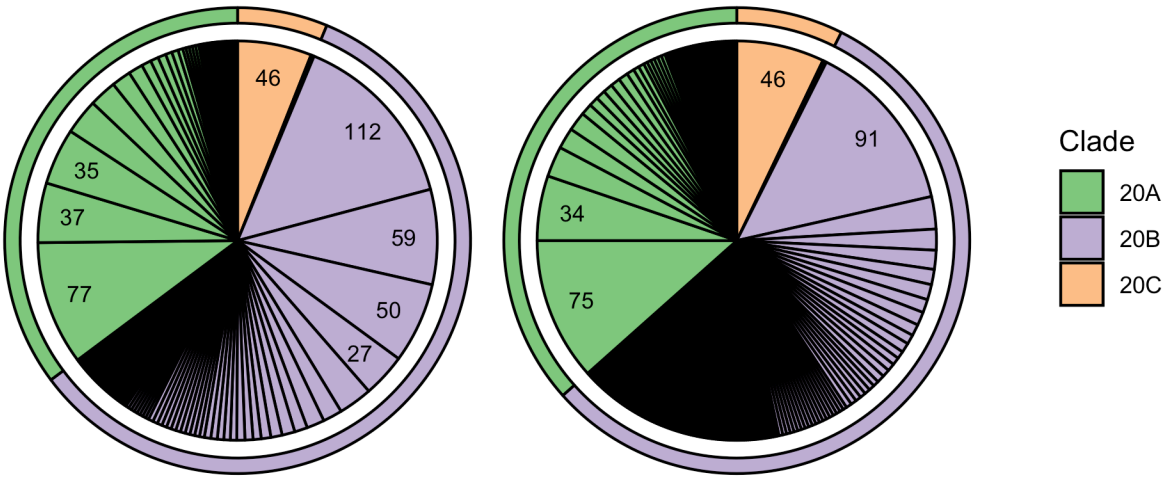


Fig. S3.

The number of Swiss genome sequences sampled during the summer epidemic that were generated by different lineages from the early epidemic. These plots are equivalent to Fig. 1b but use (a) May. 1 and (b) Jul. 1 instead of Jun. 1 as a cut-off between the early and summer epidemic.

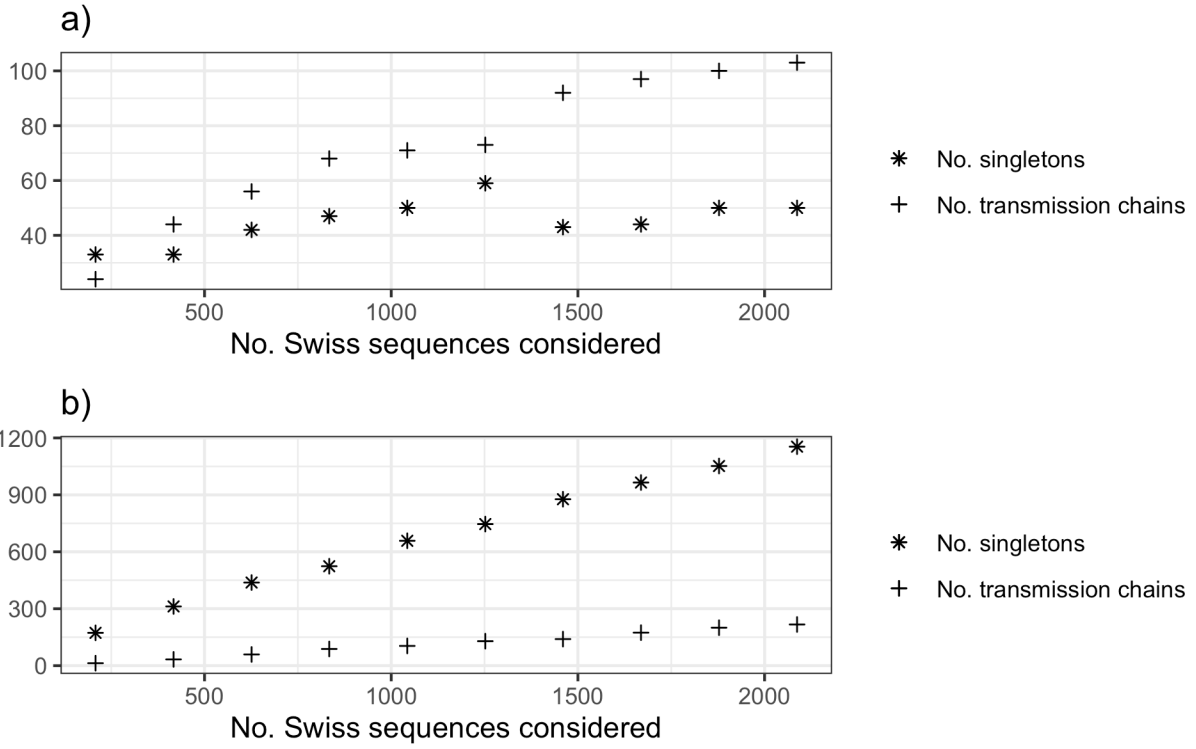


Fig. S4.

The number of Swiss introductions (singletons and transmission chains) identified on a fixed tree with increasing numbers of randomly selected Swiss sequences considered. **(a)** shows introductions inferred under the “minimum introductions, maximum local transmission” assumption while **(b)** shows introductions inferred under the “maximum introductions, minimum local transmission” assumption. See Materials and Methods for further details.

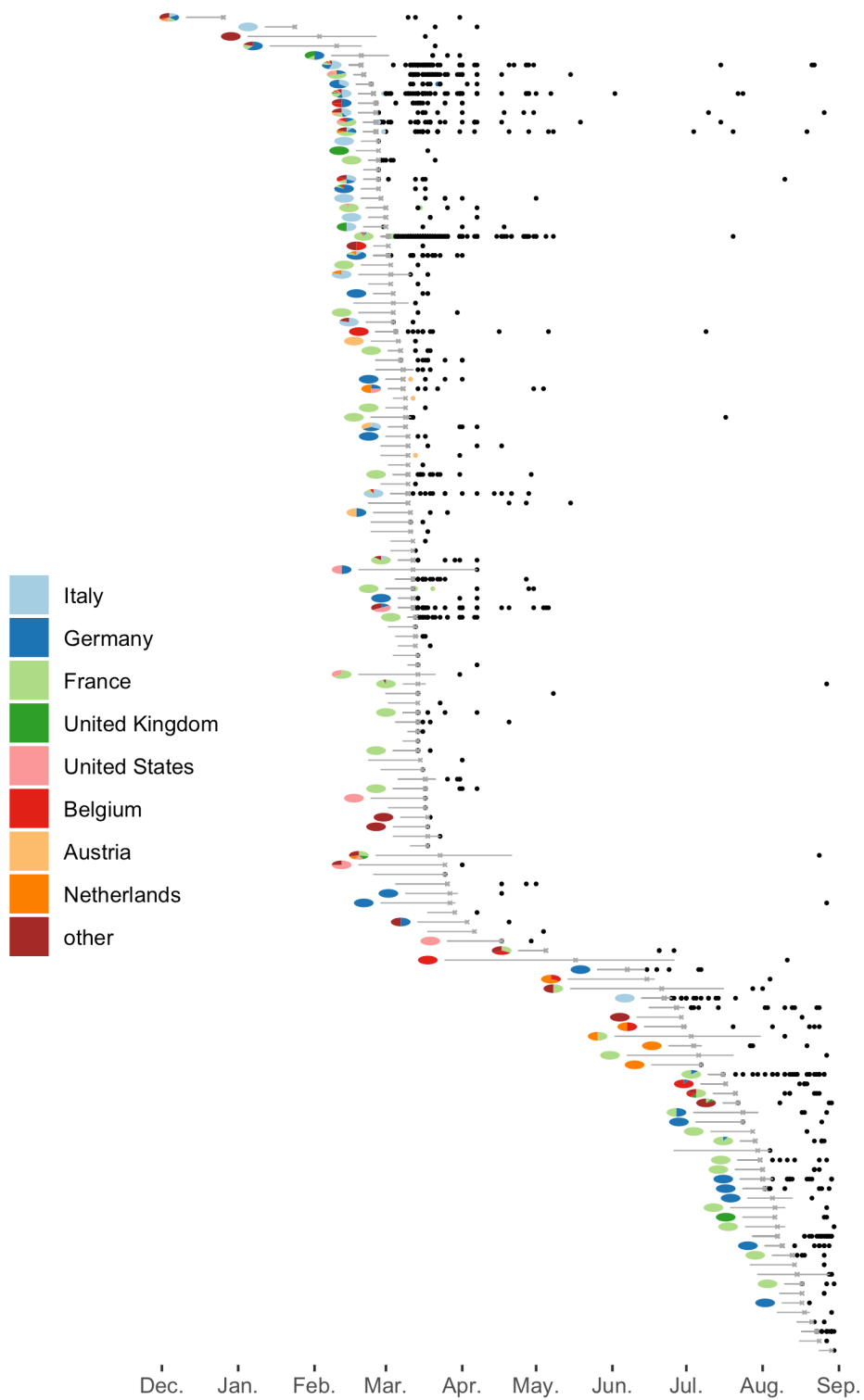


Fig. S5.

The analog to main text Fig. 2a for Swiss singletons. Here, the black points aligned horizontally are singletons descending from the same attachment point.

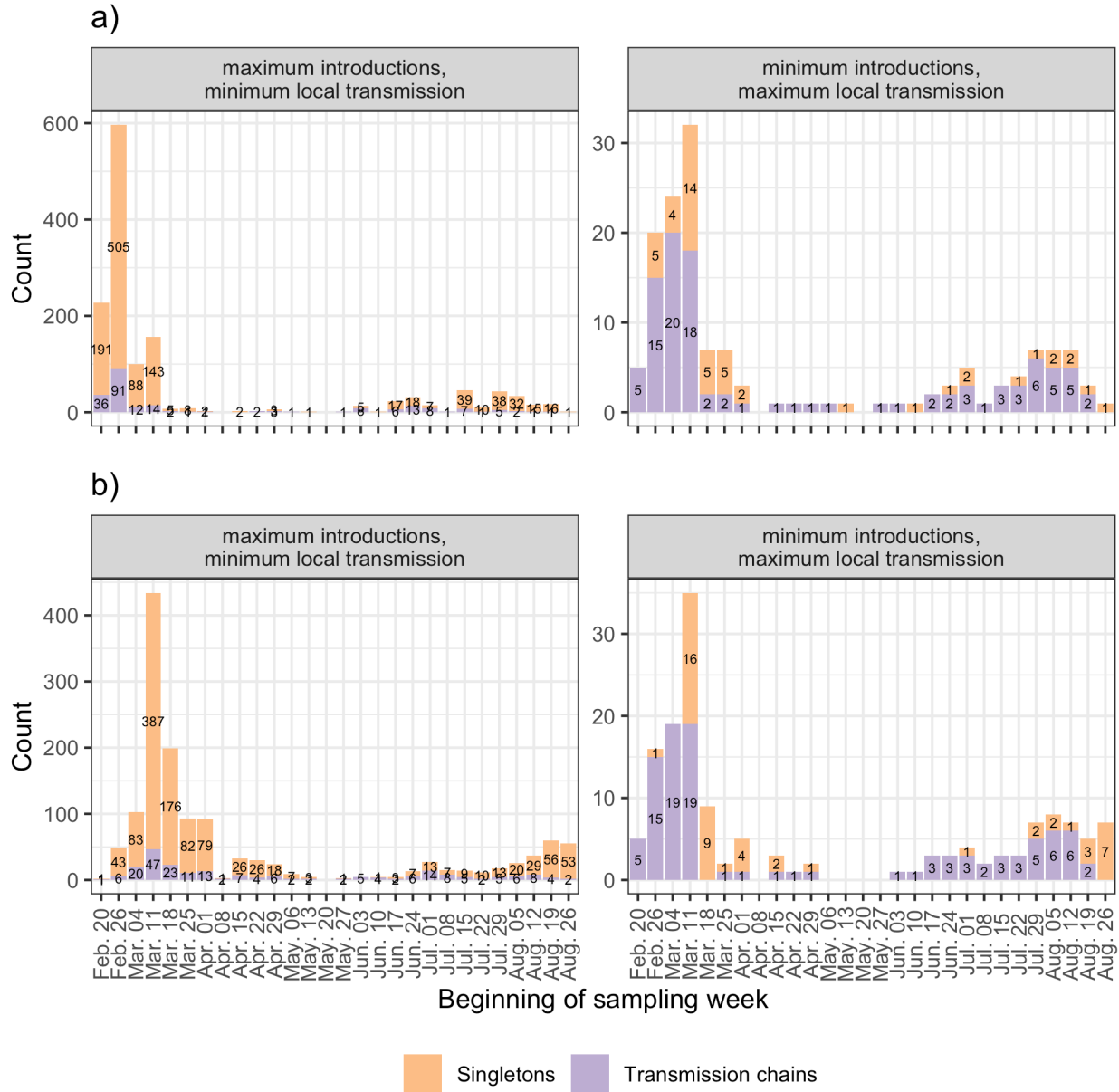


Fig. S6

Least-square estimates for (a) the attachment times of Swiss introductions to the rest of the tree and (b) Swiss transmission chain MRCAs and Swiss singleton sample dates. The two facets correspond to two different assumptions used to define Swiss transmission chains. The numbers give the number of introductions and transmission chains, respectively.

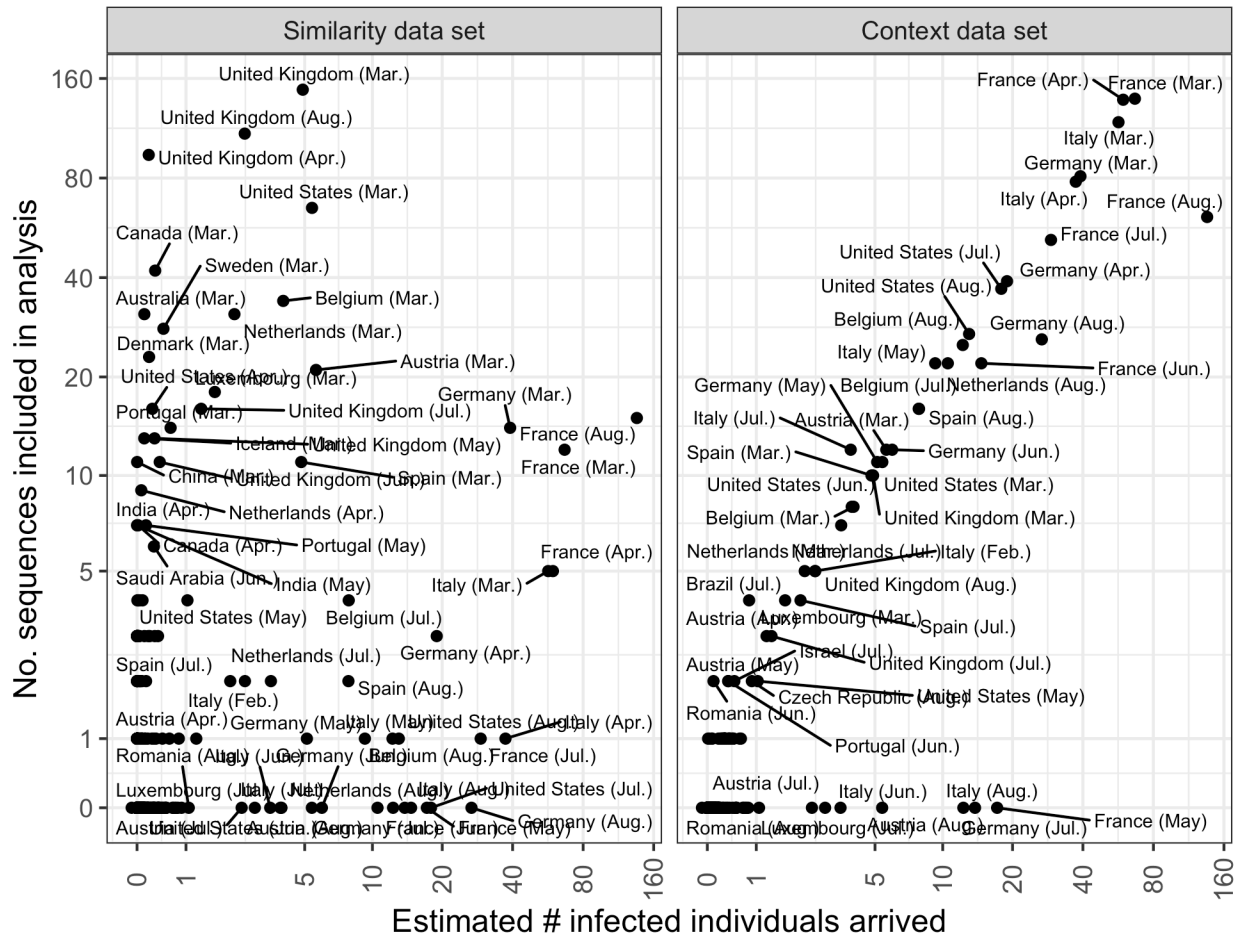


Fig. S7.

The number of genome sequences from each dataset included in our analysis plotted against the estimated number of infected individuals arriving in Switzerland from each source country until Aug. 2020. The left panel shows sequences included for being genetically similar to a Swiss sequence and the right panel shows sequences selected based on the estimated number of arrivals of infected individuals into Switzerland each month. Both the “similarity” and “context” datasets were used to identify Swiss introductions. Only the “context” dataset was used to estimate the source location of introductions. Since we lack genome sequences from some of Switzerland’s neighboring countries during a few summer months, we may underestimate the contributions of these countries around this time.

a)

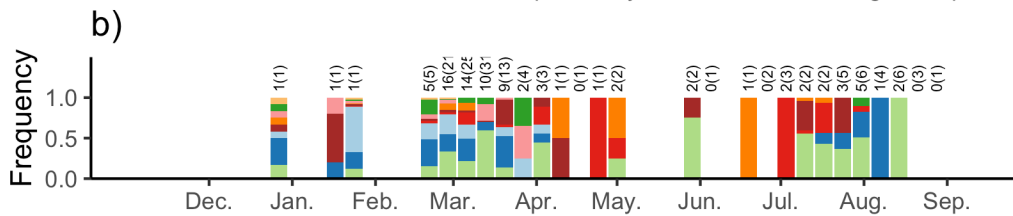
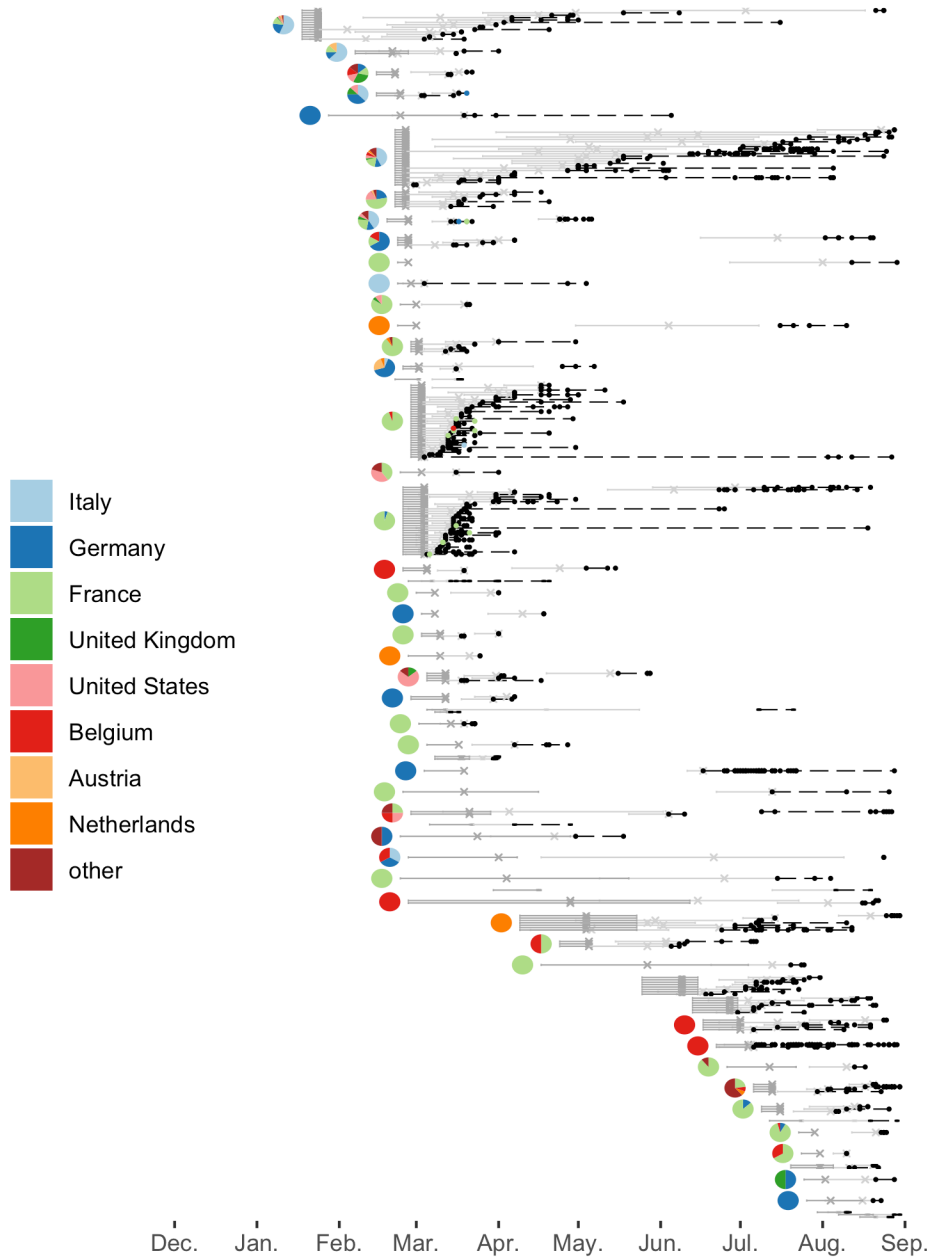


Fig. S8.

This plot is equivalent to Fig. 2 but uses replicate 2 of context sequences. See Methods and Materials for further details.

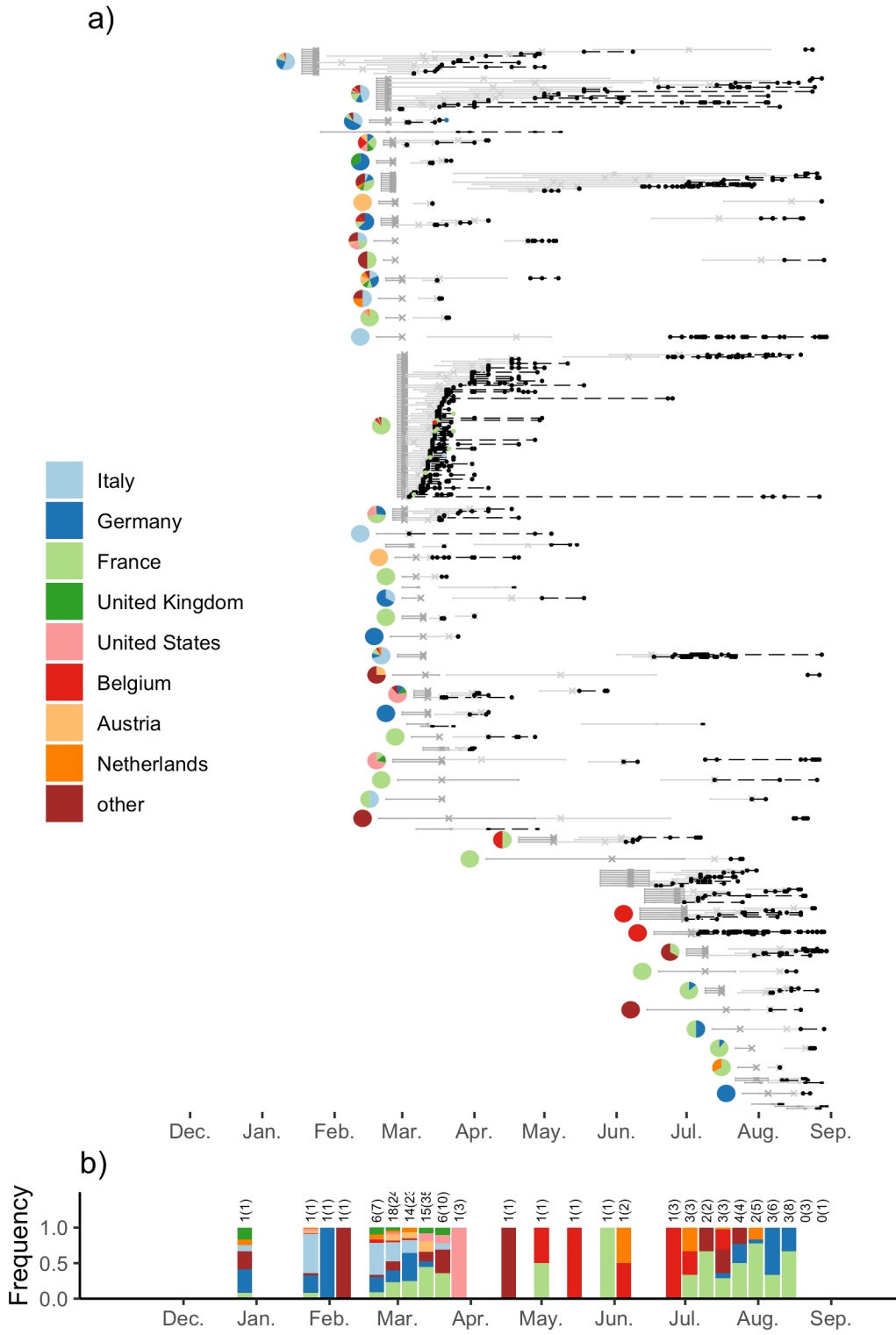


Fig. S9.

This plot is equivalent to Fig. 2 but uses replicate 3 of context sequences. See Methods and Materials for further details.

a)

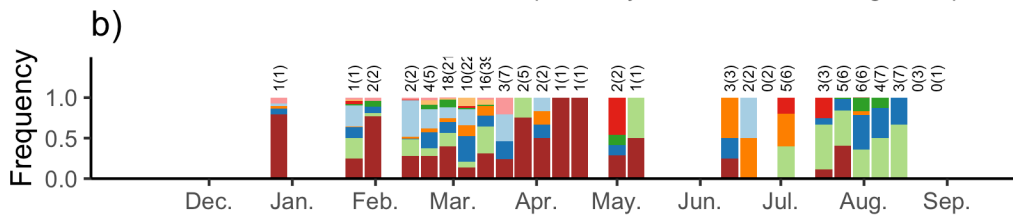
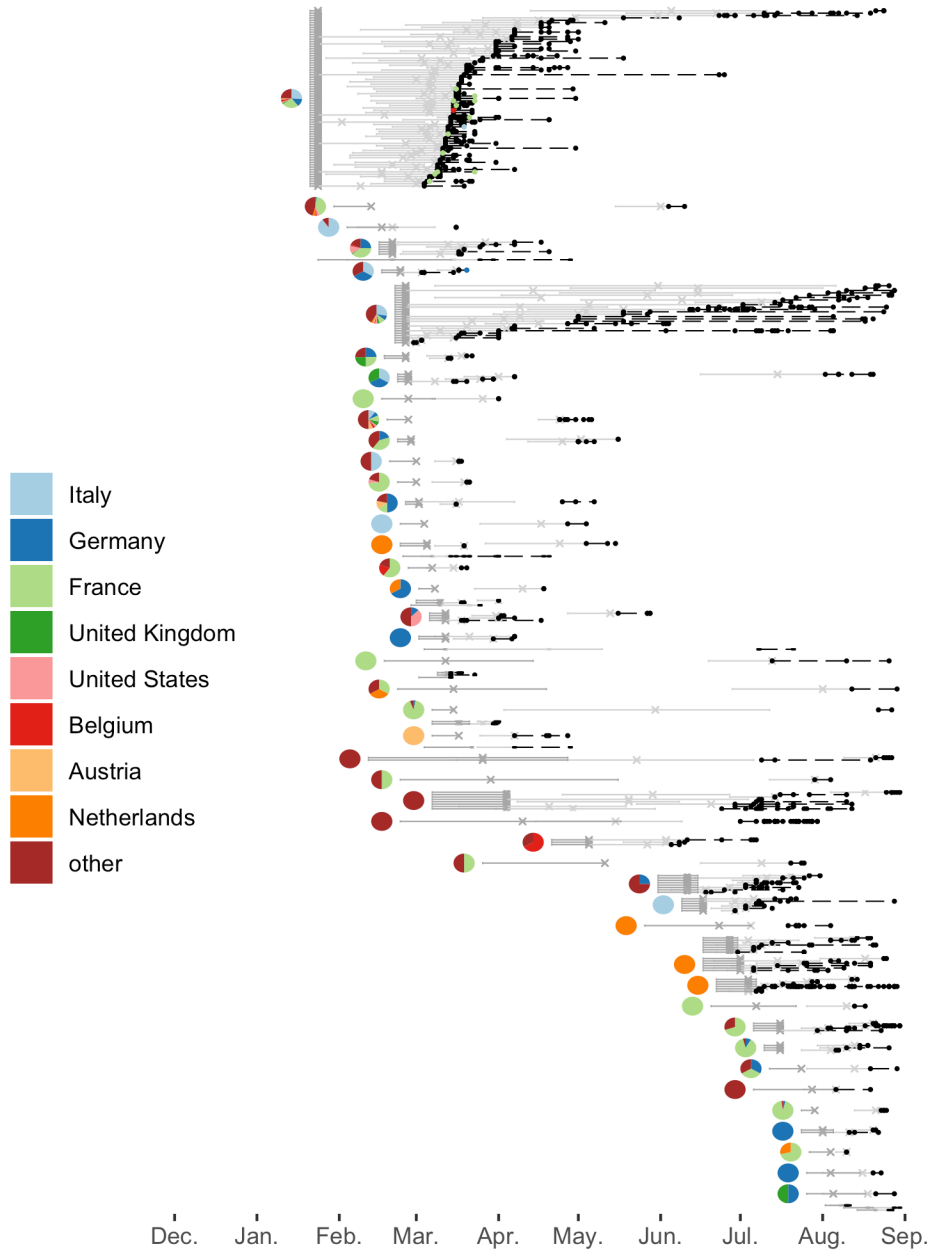


Fig. S10.

This plot is equivalent to Fig. 2 but uses context sequences based on padding estimated imports. See Methods and Materials for further details.

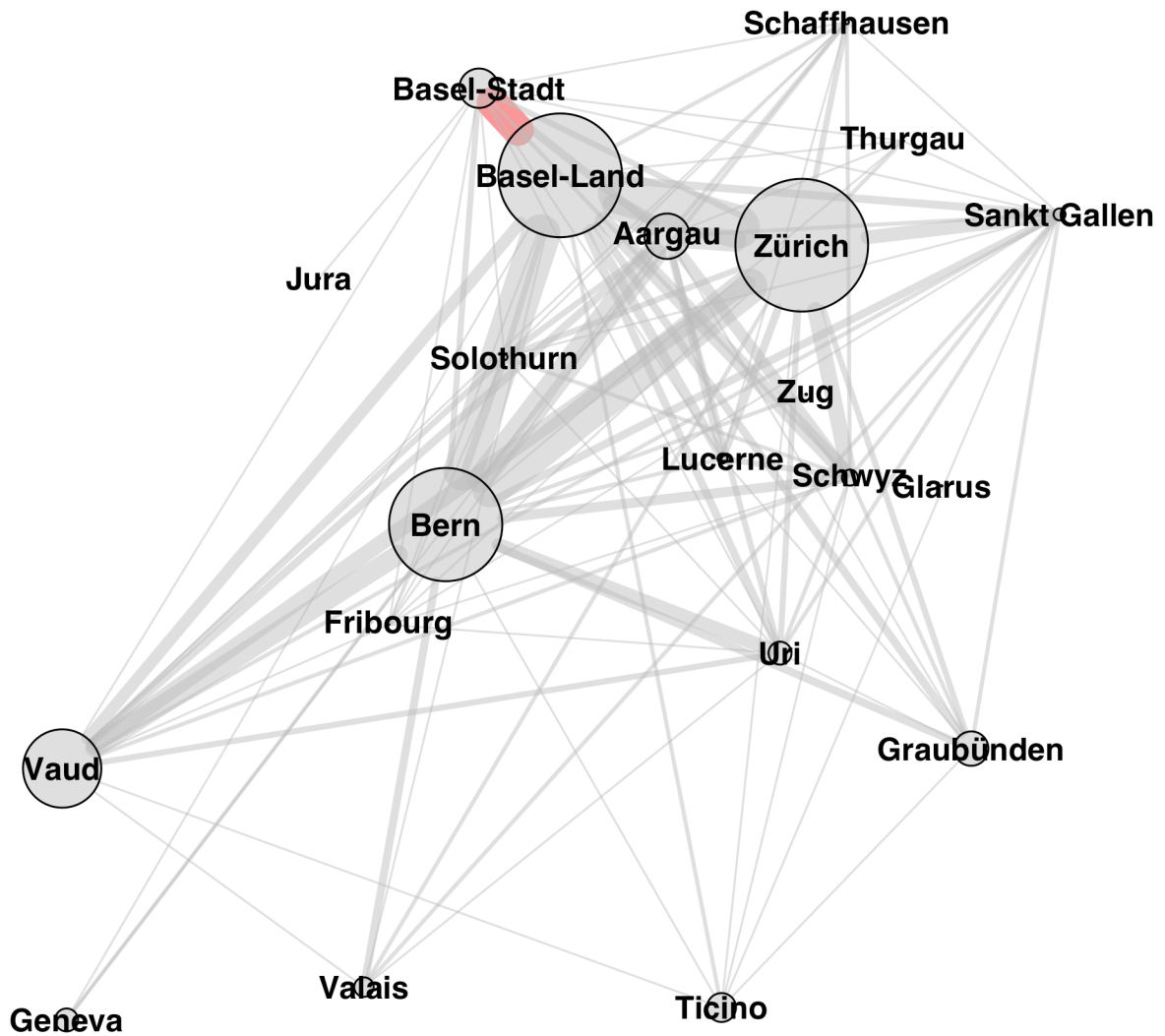


Fig. S11.

Network depicting the number of times cantons cluster together in the same transmission chain. This plot is based on sequences from our nation-wide genome sequencing project. Edge weights are proportional to the number of transmission chains containing sequences from both cantons. Edge colors indicate significantly more or less mixing than expected based on the permutation tests described in the Materials and Methods. The red edge shows that the neighboring cantons of Basel-Stadt and Basel-Land mixed significantly more than expected based on chance (these cantons are found together in 16 transmission chains, which is more often than in 90% of our permutations assuming maximal mixing). None of the cantons mixed less than expected.

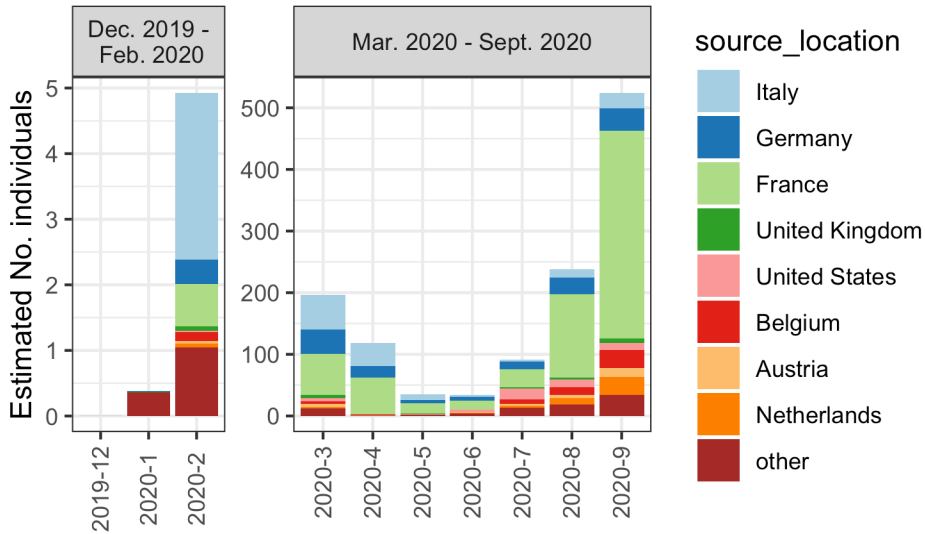


Fig. S12.

The estimated number of infected individuals arriving in Switzerland by month and source country. These estimates are generated by multiplying the number of arrivals from each country in a month by the average proportion of the source population infectious on any given day in that month. The values are intended only to be proportional to the expected number of arrivals.

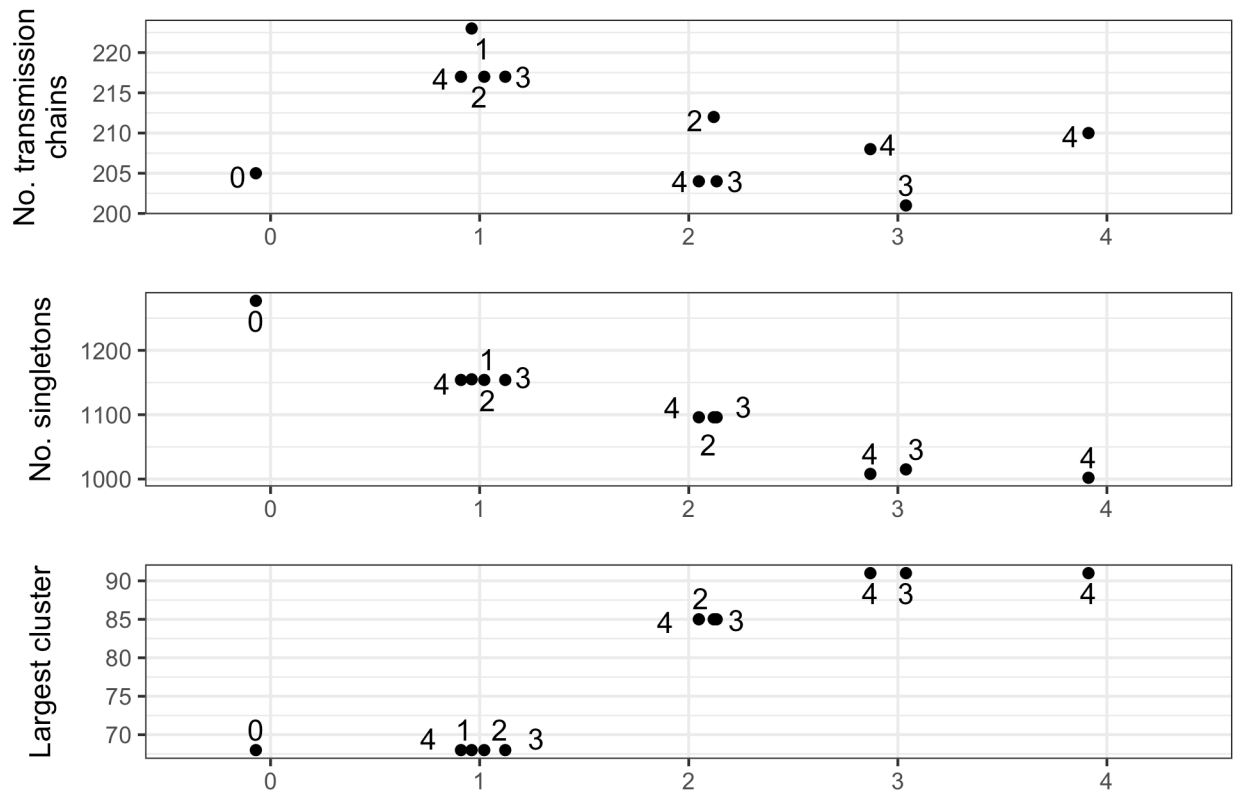


Fig. S13.

Summary statistics of inferred introductions with varying clustering criteria. The column represents the maximal number of exports along a single Swiss branch (criterion (b) in cluster definition). The numeric label corresponds to the maximal number of exports allowed when defining a Swiss transmission chain (criterion (a) in cluster definition).

Table S1.

Details of genome sequence quality control filtering.

Criteria	No. sequences
Total sequences downloaded and aligned	136801
Filtering of non-Swiss sequences: Excluded based on non-human sample, < 27,000bp, incomplete date, or in Nextstrain exclude document	-11097
Filtering of Swiss sequences: Excluded based on non-human sample, < 20,000bp, incomplete date, or in Nextstrain exclude document	-228
Excluded based on Nextstrain diagnostic check	-318
Total sequences considered for analysis	125158

Table S2.

GISAIID accession identifiers for Swiss sequences generated as part of this study.

Accession ID range start	Accession ID range end
EPI_ISL_451668	EPI_ISL_451916
EPI_ISL_466927	EPI_ISL_467016
EPI_ISL_468202	EPI_ISL_468304
EPI_ISL_476079	EPI_ISL_476134
EPI_ISL_483648	EPI_ISL_483685
EPI_ISL_486442	EPI_ISL_486538
EPI_ISL_489959	EPI_ISL_489986
EPI_ISL_498619	EPI_ISL_498627
EPI_ISL_500877	EPI_ISL_500945
EPI_ISL_510690	EPI_ISL_510809
EPI_ISL_511984	EPI_ISL_512054
EPI_ISL_516552	EPI_ISL_516607
EPI_ISL_523856	EPI_ISL_523926
EPI_ISL_535585	EPI_ISL_535649
EPI_ISL_539341	EPI_ISL_539482
EPI_ISL_541401	EPI_ISL_541539
EPI_ISL_560416	EPI_ISL_560553

Table S3.

GISAIID acknowledgments table.

Originating Laboratory	Submitting Laboratory	Authors
Accession IDs		
[Romania, Bucharest] National Institute for Infectious Diseases “Prof. Dr. Matei Balş”	[Romania, Bucharest] National Institute for Infectious Diseases “Prof. Dr. Matei Balş”	Leontina Banica et al
EPI_ISL_468149		
Agenzia di Tutela della Salute di Bergamo	Istituto Zooprofilattico Sperimentale dell'Abruzzo e Molise "G.Caporale"	Lorusso A et al
EPI_ISL_528934, EPI_ISL_528936, EPI_ISL_528937, EPI_ISL_528938, EPI_ISL_528939, EPI_ISL_528941, EPI_ISL_528942, EPI_ISL_528943, EPI_ISL_528944, EPI_ISL_528945, EPI_ISL_528946, EPI_ISL_528947, EPI_ISL_528948, EPI_ISL_528949		
Alaska State Virology Laboratory	Alaska State Virology Laboratory	Chen J et al with Pathogen omics group Dagdag R et al
EPI_ISL_528515, EPI_ISL_528517, EPI_ISL_528526		
Alsafar - Khalifa University Abu Dhabi	Alsafar - Khalifa University Abu Dhabi	Andreas Henschel et al
EPI_ISL_528691, EPI_ISL_528694, EPI_ISL_528707		
Amedeo di savoia	Crosetto lab, Karolinska Institutet, SciLifeLab	Michele Simonetti et al
EPI_ISL_569868, EPI_ISL_569871, EPI_ISL_569875, EPI_ISL_569876, EPI_ISL_569877, EPI_ISL_569878, EPI_ISL_569879, EPI_ISL_569880, EPI_ISL_569881, EPI_ISL_569882, EPI_ISL_569883, EPI_ISL_569865, EPI_ISL_569884, EPI_ISL_569885, EPI_ISL_569886		
AR Dept. of Health-Public Health Lab	Pathogen Discovery, Respiratory Viruses Branch, Division of Viral Diseases, Centers for Disease Control and Prevention	Yan Li et al
EPI_ISL_535651		
AR Dept. of Health-Public Health Lab	Pathogen Discovery, Respiratory Viruses Branch, Division of Viral Diseases, Centers for Disease Control and Prevention	Ying Tao et al

EPI_ISL_527632		
Area of Virology, Serology and Virology Division (SAViD), New South Wales Health Pathology Randwick	Area of Virology, Serology and Virology Division (SAViD), New South Wales Health Pathology Randwick	Rawlinson et al
EPI_ISL_509492, EPI_ISL_500607, EPI_ISL_500608, EPI_ISL_509493, EPI_ISL_500609, EPI_ISL_500611, EPI_ISL_527008, EPI_ISL_500630, EPI_ISL_500634, EPI_ISL_500674, EPI_ISL_500695, EPI_ISL_527015, EPI_ISL_527016		
ARS Algarve - Laboratório Laura Ayres	Instituto Nacional de Saude (INSA)	Guiomar et al et al
EPI_ISL_418001		
ASST GOM Niguarda	Dep. Of Oncology and Hemato-Oncology University of Milan	Claudia Alteri et al
EPI_ISL_542098, EPI_ISL_542099, EPI_ISL_542100, EPI_ISL_542101, EPI_ISL_542103, EPI_ISL_542105, EPI_ISL_542110, EPI_ISL_542111, EPI_ISL_542112, EPI_ISL_542115, EPI_ISL_542117, EPI_ISL_542118, EPI_ISL_542119, EPI_ISL_542122, EPI_ISL_542124, EPI_ISL_542126, EPI_ISL_542128, EPI_ISL_542129, EPI_ISL_542130, EPI_ISL_542131, EPI_ISL_542132, EPI_ISL_542133, EPI_ISL_542134, EPI_ISL_542135, EPI_ISL_542137, EPI_ISL_542140, EPI_ISL_542141, EPI_ISL_542142, EPI_ISL_542144, EPI_ISL_542148, EPI_ISL_542150, EPI_ISL_542151, EPI_ISL_542153, EPI_ISL_542155, EPI_ISL_542157, EPI_ISL_542158, EPI_ISL_542160, EPI_ISL_542162, EPI_ISL_542163, EPI_ISL_542164, EPI_ISL_542166, EPI_ISL_542167, EPI_ISL_542168, EPI_ISL_542169, EPI_ISL_542173, EPI_ISL_542174, EPI_ISL_542175, EPI_ISL_542176, EPI_ISL_542180, EPI_ISL_542182, EPI_ISL_542183, EPI_ISL_542184, EPI_ISL_542186, EPI_ISL_542187, EPI_ISL_542188, EPI_ISL_542189, EPI_ISL_542190, EPI_ISL_542191, EPI_ISL_542192, EPI_ISL_542193, EPI_ISL_542195, EPI_ISL_542198, EPI_ISL_542200, EPI_ISL_542203, EPI_ISL_542205, EPI_ISL_542207, EPI_ISL_542208, EPI_ISL_542210, EPI_ISL_542211, EPI_ISL_542215, EPI_ISL_542228, EPI_ISL_542229, EPI_ISL_542236, EPI_ISL_542238, EPI_ISL_542242, EPI_ISL_542243, EPI_ISL_542245, EPI_ISL_542246, EPI_ISL_542254, EPI_ISL_542258, EPI_ISL_542264, EPI_ISL_542265, EPI_ISL_542266, EPI_ISL_542267, EPI_ISL_542268, EPI_ISL_542269, EPI_ISL_542270, EPI_ISL_542272, EPI_ISL_542274, EPI_ISL_542275, EPI_ISL_542276, EPI_ISL_542400, EPI_ISL_542402, EPI_ISL_542404, EPI_ISL_542405, EPI_ISL_542407, EPI_ISL_542413, EPI_ISL_542415, EPI_ISL_542417, EPI_ISL_542418, EPI_ISL_542420, EPI_ISL_542423, EPI_ISL_542425, EPI_ISL_542426, EPI_ISL_542428, EPI_ISL_542430, EPI_ISL_542431, EPI_ISL_542432, EPI_ISL_542434, EPI_ISL_542437, EPI_ISL_542438, EPI_ISL_542440, EPI_ISL_542443		
Austrian Agency for Health and Food Safety (AGES)	Bergthaler laboratory, CeMM Research Center for Molecular Medicine of the Austrian Academy of Sciences	Alexandra Popa et al
EPI_ISL_475830, EPI_ISL_475838, EPI_ISL_475839, EPI_ISL_475841, EPI_ISL_475842, EPI_ISL_475849, EPI_ISL_475855, EPI_ISL_475863, EPI_ISL_475870, EPI_ISL_475873, EPI_ISL_475886		

Avera McKennan Laboratory	Minnesota Department of Health, Public Health Laboratory	Matt Plumb et al
EPI_ISL_507963, EPI_ISL_507965		
B.J. Medical College and Civil hospital	Gujarat Biotechnology Research Centre	Afzal Ansari et al
EPI_ISL_461503		
B.J. Medical College and Civil hospital	Gujarat Biotechnology Research Centre	Zuber Saiyed et al
EPI_ISL_467048		
Bamrasnaradura Hospital	1. Department of Medical Sciences, Ministry of Public Health, Thailand 2. Thai Red Cross Emerging Infectious Diseases - Health Science Centre 3. Department of Disease Control, Ministry of Public Health, Thailand	Pilailuk et al
EPI_ISL_403962		
Barts Health NHS Trust	Wellcome Sanger Institute for the COVID-19 Genomics UK Consortium	Teresa Cutino-Moguel et al
EPI_ISL_541778		
BCCDC Public Health Laboratory	BCCDC Public Health Laboratory	Harrigan et al
EPI_ISL_418849, EPI_ISL_418857		
Biology Dpt	Microbiology and Infections Diseases	Emmanuelle Billon-Denis et al
EPI_ISL_505003		
Biomedical Sciences and Public Health, Polytechnic University of Marche	Biomedical Sciences and Public Health, Polytechnic University of Marche	Bagnarelli et al
EPI_ISL_516079, EPI_ISL_516081, EPI_ISL_516082, EPI_ISL_516086		
Bülach Hospital	Institute of Medical Virology, University of Zurich	Stefan Schmutz et al
EPI_ISL_524476		

Bundeswehr Institute of Microbiology	Bundeswehr Institute of Microbiology	Mathias C Walter et al
EPI_ISL_414521		
Cabinet médical	National Reference Center for Viruses of Respiratory Infections, Institut Pasteur, Paris	Mélanie Albert et al
EPI_ISL_418235		
Cabinet Médical	National Reference Center for Viruses of Respiratory Infections, Institut Pasteur, Paris	Mélanie Albert et al
EPI_ISL_443301, EPI_ISL_428364		
Caloundra Hospital	Public Health Virology Laboratory	Bixing Huang et al
EPI_ISL_447594		
Cantonal Hospital Winterthur	Institute of Medical Virology, University of Zurich	Stefan Schmutz et al
EPI_ISL_524478		
Capio S:t Gorans sjukhus	The Public Health Agency of Sweden	Anna-Malin Linde et al
EPI_ISL_534230, EPI_ISL_534231		
Cedars-Sinai Medical Center, Department of Pathology & Laboratory Medicine, Molecular Pathology Laboratory	Cedars-Sinai Medical Center, Molecular Pathology Laboratory of Department of Pathology & Laboratory Medicine and Genomic Core	Wenjuan Zhang et al
EPI_ISL_475601, EPI_ISL_475679		
Center for Diagnostics, Institute of Medical Microbiology, Virology and Hygiene	University Medical Center Hamburg-Eppendorf	Huang et al
EPI_ISL_450413		
Center for Genome Regulation (CRG)	Center for Mathematical Modeling and Center for Genome Regulation. Santiago, Chile	Gaete A et al
EPI_ISL_468760		
Center for Virology, Medical University of Vienna	Bergthaler laboratory, CeMM Research Center for Molecular	Alexandra Popa et al

	Medicine of the Austrian Academy of Sciences	
EPI_ISL_419673, EPI_ISL_437997, EPI_ISL_438013, EPI_ISL_438016, EPI_ISL_438026, EPI_ISL_438030, EPI_ISL_438033, EPI_ISL_438036, EPI_ISL_438045, EPI_ISL_438060, EPI_ISL_438072, EPI_ISL_438079, EPI_ISL_438082, EPI_ISL_438087, EPI_ISL_438089, EPI_ISL_438096, EPI_ISL_438108, EPI_ISL_438115, EPI_ISL_438116, EPI_ISL_438117, EPI_ISL_475789, EPI_ISL_475798, EPI_ISL_475809, EPI_ISL_438124		
Center of Medical Microbiology, Virology, and Hospital Hygiene, University of Duesseldorf	Center of Medical Microbiology, Virology, and Hospital Hygiene, Heinrich Heine University Düsseldorf	Maximilian Damaganz et al
EPI_ISL_523950		
Center of Medical Microbiology, Virology, and Hospital Hygiene, University of Duesseldorf	Center of Medical Microbiology, Virology, and Hospital Hygiene, University of Duesseldorf	Maximilian Damaganz et al
EPI_ISL_523929, EPI_ISL_523931, EPI_ISL_523932, EPI_ISL_523934, EPI_ISL_523935, EPI_ISL_523936, EPI_ISL_523937, EPI_ISL_523938, EPI_ISL_523939, EPI_ISL_523940, EPI_ISL_523943, EPI_ISL_523944, EPI_ISL_523945, EPI_ISL_523946, EPI_ISL_523947, EPI_ISL_523948, EPI_ISL_523949		
Center of Medical Microbiology, Virology, and Hospital Hygiene, University of Duesseldorf	Center of Medical Microbiology, Virology, and Hospital Hygiene, University of Duesseldorf	Ortwin Adams et al
EPI_ISL_414507, EPI_ISL_414505, EPI_ISL_414509, EPI_ISL_417458, EPI_ISL_417459, EPI_ISL_417460, EPI_ISL_417461, EPI_ISL_417462, EPI_ISL_417463, EPI_ISL_417464, EPI_ISL_417465, EPI_ISL_417466, EPI_ISL_417468, EPI_ISL_419541, EPI_ISL_419542, EPI_ISL_419543, EPI_ISL_419544, EPI_ISL_419545, EPI_ISL_419546, EPI_ISL_419547, EPI_ISL_419548, EPI_ISL_419549, EPI_ISL_419550, EPI_ISL_419551, EPI_ISL_419552, EPI_ISL_425120, EPI_ISL_425122, EPI_ISL_425124, EPI_ISL_425125, EPI_ISL_425127, EPI_ISL_425128, EPI_ISL_425126, EPI_ISL_425138, EPI_ISL_425139, EPI_ISL_425129, EPI_ISL_425130, EPI_ISL_425131, EPI_ISL_425132, EPI_ISL_425133, EPI_ISL_425134, EPI_ISL_425135, EPI_ISL_425136, EPI_ISL_425137, EPI_ISL_452180, EPI_ISL_425140		
Center of Medical Microbiology, Virology, and Hospital Hygiene, University of Duesseldorf	Universitätstr.1 40225 Düsseldorf Germany	Maximilian Damaganz et al
EPI_ISL_523930		
Centogene AG	Centogene AG	Prof. Dr. Peter Bauer et al
EPI_ISL_459962, EPI_ISL_459964, EPI_ISL_459963, EPI_ISL_457750		

Centre de SSS de la Haute-Yamaska	Laboratoire de santé publique du Québec	Sandrine Moreira et al
EPI_ISL_535805		
Centre for Clinical Infection and Diagnostics Research and Genomics Innovation Unit, Guy's and St. Thomas' NHS Trust	COVID-19 Genomics UK (COG-UK) Consortium	Chloe Fisher et al
EPI_ISL_484130, EPI_ISL_484200		
Centre for Enzyme Innovation, University of Portsmouth / Translational Research Laboratory, Portsmouth Hospitals NHS Trust	COVID-19 Genomics UK (COG-UK) Consortium	Angela Beckett et al
EPI_ISL_475272, EPI_ISL_475293, EPI_ISL_479179, EPI_ISL_526434, EPI_ISL_507131, EPI_ISL_499308, EPI_ISL_507143, EPI_ISL_517511, EPI_ISL_517512		
Centre for Infectious Diseases and Microbiology Public Health	NSW Health Pathology - Institute of Clinical Pathology and Medical Research; Westmead Hospital; University of Sydney	Bachmann N et al
EPI_ISL_427758		
Centre for Infectious Diseases and Microbiology Public Health	NSW Health Pathology - Institute of Clinical Pathology and Medical Research; Westmead Hospital; University of Sydney	O'Sullivan MV et al
EPI_ISL_417394		
Centre for Infectious Diseases and Microbiology Public Health	NSW Health Pathology - Institute of Clinical Pathology and Medical Research; Westmead Hospital; University of Sydney	Sadsad R et al
EPI_ISL_417407		
Centre Hospitalier Universitaire de Rouen Laboratoire de Virologie	National Reference Center for Viruses of Respiratory Infections, Institut Pasteur, Paris	Mélnie Albert et al
EPI_ISL_416494		
Centre Hospitalier Alpes Leman	CNR Virus des Infections Respiratoires - France SUD	Antonin Bal et al
EPI_ISL_509012		
Centre hospitalier Anna-Laberge	Laboratoire de santé publique du Québec	Sandrine Moreira et al

EPI_ISL_535960, EPI_ISL_535980, EPI_ISL_536159, EPI_ISL_536220, EPI_ISL_536241		
Centre Hospitalier Compiègne Laboratoire de Biologie	National Reference Center for Viruses of Respiratory Infections, Institut Pasteur, Paris	Mélanie Albert et al
EPI_ISL_429968, EPI_ISL_418221, EPI_ISL_418223, EPI_ISL_418225, EPI_ISL_418236, EPI_ISL_418238, EPI_ISL_418239		
Centre Hospitalier Compiègne Laboratoire de Biologie	National Reference Center for Viruses of Respiratory Infections, Institut Pasteur, Paris	Mélanie Albert et al
EPI_ISL_414629, EPI_ISL_414634, EPI_ISL_414637, EPI_ISL_415654, EPI_ISL_416495, EPI_ISL_416497		
Centre Hospitalier de Bourg en Bresse	CNR Virus des Infections Respiratoires - France SUD	Antonin Bal et al
EPI_ISL_508938, EPI_ISL_508944, EPI_ISL_525539, EPI_ISL_419185, EPI_ISL_419186, EPI_ISL_508968, EPI_ISL_417340		
Centre Hospitalier de Bourg en Bresse	CNR Virus des Infections Respiratoires - France SUD	Bal et al
EPI_ISL_416757		
Centre Hospitalier de Macon	CNR Virus des Infections Respiratoires - France SUD	Antonin Bal et al
EPI_ISL_508946, EPI_ISL_508876, EPI_ISL_419174, EPI_ISL_419175, EPI_ISL_509005, EPI_ISL_508949, EPI_ISL_419187, EPI_ISL_420614, EPI_ISL_508952		
Centre Hospitalier de Valence	CNR Virus des Infections Respiratoires - France SUD	Antonin Bal et al
EPI_ISL_508881, EPI_ISL_419168		
Centre Hospitalier de Valence	CNR Virus des Infections Respiratoires - France SUD	Bal et al
EPI_ISL_416749		
Centre Hospitalier de Villefranche	CNR Virus des Infections Respiratoires - France SUD	Antonin Bal et al
EPI_ISL_508978, EPI_ISL_508932		
Centre Hospitalier du Haut-Bugey	CNR Virus des Infections Respiratoires - France SUD	Antonin Bal et al
EPI_ISL_509016		
Centre Hospitalier Lucien Hussel	CNR Virus des Infections Respiratoires - France SUD	Antonin Bal et al
EPI_ISL_508947		
Centre hospitalier Métropole Savoie	CNR Virus des Infections Respiratoires - France SUD	Antonin Bal et al

EPI_ISL_508934, EPI_ISL_508935, EPI_ISL_508936		
Centre Hospitalier Pierre Oudot	CNR Virus des Infections Respiratoires - France SUD	Antonin Bal et al
EPI_ISL_508998, EPI_ISL_508966, EPI_ISL_508975		
Centre Hospitalier Régional Universitaire de Nantes Laboratoire de Virologie	National Reference Center for Viruses of Respiratory Infections, Institut Pasteur, Paris	Mélnie Albert et al
EPI_ISL_414625		
Centre Hospitalier René Dubois Laboratoire de Microbiologie - Bât A	National Reference Center for Viruses of Respiratory Infections, Institut Pasteur, Paris	Mélnie Albert et al
EPI_ISL_414633		
Centre Hospitalier Saint Joseph Saint Luc	CNR Virus des Infections Respiratoires - France SUD	Antonin Bal et al
EPI_ISL_508879, EPI_ISL_418418, EPI_ISL_418419, EPI_ISL_508880, EPI_ISL_420617, EPI_ISL_508960		
Centro de Desenvolvimento Tecnológico em Saude, Fundacao Oswaldo Cruz	Centro de Desenvolvimento Tecnológico em Saude, Fundacao Oswaldo Cruz	Souza et al
EPI_ISL_509430, EPI_ISL_509432, EPI_ISL_509433, EPI_ISL_510541, EPI_ISL_510536, EPI_ISL_509435		
Centro de Investigación Biomédica de La Rioja - Hospital San Pedro Logroño	SeqCOVID-SPAIN consortium/IBV(CSIC)	María de Toro et al
EPI_ISL_500430, EPI_ISL_500433, EPI_ISL_500440, EPI_ISL_537382		
Centro de Investigaciones, Universidad de Especialidades Espíritu Santo	Institute of Microbiology, Universidad San Francisco de Quito	Derly Andrade et al
EPI_ISL_491934		
Centro Hospital do Porto, E.P.E. - H. Geral de Santo Antonio	Instituto Nacional de Saude (INSA)	Guiomar et al et al
EPI_ISL_417999		
CENTRO ONCOLOGICO DEL NORTE	Instituto de Salud Publica de Chile	Andrés E Castillo et al
EPI_ISL_445267		
CH Compiègne Laboratoire de Biologie	National Reference Center for Viruses of Respiratory Infections, Institut Pasteur, Paris	Mélanie Albert et al
EPI_ISL_421500, EPI_ISL_420041, EPI_ISL_421510, EPI_ISL_421511, EPI_ISL_428353, EPI_ISL_428359, EPI_ISL_428360		

CH Jean de Navarre Laboratoire de Biologie	National Reference Center for Viruses of Respiratory Infections, Institut Pasteur, Paris	Mélanie Albert et al
EPI_ISL_420053, EPI_ISL_428350		
CH Jean de Navarre Laboratoire de Biologie	National Reference Center for Viruses of Respiratory Infections, Institut Pasteur, Paris	Mélanie Albert et al
EPI_ISL_416493		
Charité Universitätsmedizin Berlin, Institut für Virologie/Labor Berlin	Charité Universitätsmedizin Berlin, Institut für Virologie/Labor Berlin	Victor M Corman et al
EPI_ISL_516633, EPI_ISL_516634, EPI_ISL_516630, EPI_ISL_516635, EPI_ISL_516637, EPI_ISL_516636, EPI_ISL_516632, EPI_ISL_516642, EPI_ISL_516638, EPI_ISL_516639, EPI_ISL_516629, EPI_ISL_516640, EPI_ISL_516643, EPI_ISL_516641, EPI_ISL_516644		
Charité Universitätsmedizin Berlin, Institute of Virology; Institut für Mikrobiologie der Bundeswehr, Munich	Charité Universitätsmedizin Berlin, Institute of Virology	Victor M Corman et al
EPI_ISL_406862		
Château de la Source	National Reference Center for Viruses of Respiratory Infections, Institut Pasteur, Paris	Mélanie Albert et al
EPI_ISL_443315		
Child Health Research Foundation	Child Health Research Foundation	Senjuti Saha et al
EPI_ISL_492028		
CHRU Bretonneau - Serv. Bacterio-Virol.	National Reference Center for Viruses of Respiratory Infections, Institut Pasteur, Paris	Mélanie Albert et al
EPI_ISL_418222		
CHRU Pontchaillou - Laboratoire de Virologie	National Reference Center for Viruses of Respiratory Infections, Institut Pasteur, Paris	Mélanie Albert et al
EPI_ISL_443289, EPI_ISL_443290, EPI_ISL_443291, EPI_ISL_443292, EPI_ISL_443293, EPI_ISL_443294		
CHRU Pontchaillou - Laboratoire de Virologie	National Reference Center for Viruses of Respiratory Infections, Institut Pasteur, Paris	Mélanie Albert et al
EPI_ISL_416504, EPI_ISL_416506, EPI_ISL_416507, EPI_ISL_416511		
CHU - Hôpital Cavale Blanche - Labo. de Virologie	National Reference Center for Viruses of Respiratory Infections, Institut Pasteur, Paris	Mélanie Albert et al

EPI_ISL_443268, EPI_ISL_443270, EPI_ISL_443271, EPI_ISL_443274, EPI_ISL_443275, EPI_ISL_443277, EPI_ISL_443278, EPI_ISL_443279, EPI_ISL_443280, EPI_ISL_443281		
CHU Coimbra - Pediátrico	Instituto Nacional de Saude (INSA)	Guiomar et al et al
EPI_ISL_418005		
CHU de Dijon - Laboratoire de Virologie	National Reference Center for Viruses of Respiratory Infections, Institut Pasteur, Paris	Mélanie Albert et al
EPI_ISL_443261, EPI_ISL_443262		
CHU Gabriel Montpied	CNR Virus des Infections Respiratoires - France SUD	Bal et al
EPI_ISL_416752, EPI_ISL_416751		
CHU Purpan - Laboratoire de Virologie - Institut Fédératif de Biologie	Laboratoire de virologie - École Nationale Vétérinaire de Toulouse	Guillaume Croville et al
EPI_ISL_434626, EPI_ISL_434627, EPI_ISL_434628, EPI_ISL_434629, EPI_ISL_434630, EPI_ISL_434631, EPI_ISL_434632, EPI_ISL_434633, EPI_ISL_434634, EPI_ISL_434635, EPI_ISL_482879, EPI_ISL_482880, EPI_ISL_482881, EPI_ISL_482882, EPI_ISL_482883, EPI_ISL_482884, EPI_ISL_482885, EPI_ISL_482886, EPI_ISL_482887, EPI_ISL_482888, EPI_ISL_482889		
CHULC - H Curry Cabral	Instituto Nacional de Saude (INSA)	Guiomar et al et al
EPI_ISL_418013		
Civil Hospital, Panchkula	CSIR-Institute of Microbial Technology	Kanika Bansal et al
EPI_ISL_547588		
Clínica Universidad de Navarra. Servicio de Enfermedades Infecciosas y Microbiología clínica	SeqCOVID-SPAIN consortium/IBV(CSIC)	Mirian Fernández-Alonso et al
EPI_ISL_538101		
Clinical Microbiology Laboratory, Sheba Medical Center	Stern Lab	Stern Lab et al
EPI_ISL_447441		
Clinical Virology Laboratory, Soroka Medical Center and the Faculty of Health Sciences, Ben-Gurion University of the Negev	Stern Lab	Stern Lab et al
EPI_ISL_447328		

Clinical Virology Unit, Hadassah Hebrew University Medical Center	Stern Lab	Stern Lab et al
EPI_ISL_447359		
CMIP	National Reference Center for Viruses of Respiratory Infections, Institut Pasteur, Paris	Mélanie Albert et al
EPI_ISL_420043		
CNR Virus des Infections Respiratoires - France SUD	CNR Virus des Infections Respiratoires - France SUD	Antonin Bal et al
EPI_ISL_525536, EPI_ISL_508945, EPI_ISL_508948, EPI_ISL_525537, EPI_ISL_508999, EPI_ISL_525541, EPI_ISL_525543, EPI_ISL_509002, EPI_ISL_508951, EPI_ISL_508953, EPI_ISL_508956, EPI_ISL_508961, EPI_ISL_508964, EPI_ISL_508965, EPI_ISL_508967, EPI_ISL_508969, EPI_ISL_508970, EPI_ISL_508972, EPI_ISL_508974, EPI_ISL_508977, EPI_ISL_508979, EPI_ISL_508980, EPI_ISL_508981, EPI_ISL_508982, EPI_ISL_508985, EPI_ISL_508988, EPI_ISL_508912, EPI_ISL_508913, EPI_ISL_508914, EPI_ISL_508990, EPI_ISL_508915, EPI_ISL_508992, EPI_ISL_508916, EPI_ISL_508993, EPI_ISL_508989, EPI_ISL_508994, EPI_ISL_508995, EPI_ISL_508997, EPI_ISL_508917, EPI_ISL_508918, EPI_ISL_508919, EPI_ISL_508922, EPI_ISL_508923, EPI_ISL_508924, EPI_ISL_508925, EPI_ISL_508926, EPI_ISL_508927, EPI_ISL_508928, EPI_ISL_508929		
CNR Virus des Infections Respiratoires - France SUD	CNR Virus des Infections Respiratoires - France SUD	Bal et al
EPI_ISL_416745		
Contra Costa Public Health Lab	Chan-Zuckerberg Biohub	CZB Cliahub Consortium et al
EPI_ISL_548579, EPI_ISL_548557, EPI_ISL_548556, EPI_ISL_548577		
CoronaNet Lab- TaskForce Regione Campania, CEINGE Biotecnologie Avanzate, Via G. Salvatore	CoronaNet Lab- TaskForce Regione Campania, CEINGE Biotecnologie Avanzate, Via G. Salvatore	Zollo et al
EPI_ISL_514751		
County of San Luis Obispo Public Health Laboratory	Chan-Zuckerberg Biohub	CZB Cliahub Consortium et al
EPI_ISL_548391		
County of Santa Clara Public Health Department	Chan-Zuckerberg Biohub	CZB Cliahub Consortium et al

EPI_ISL_548342, EPI_ISL_548392, EPI_ISL_548395, EPI_ISL_548562, EPI_ISL_548568, EPI_ISL_548604, EPI_ISL_548584, EPI_ISL_548588, EPI_ISL_548661, EPI_ISL_548610, EPI_ISL_548659, EPI_ISL_548607		
CSIR-Centre for Cellular and Molecular Biology	CSIR-Centre for Cellular and Molecular Biology	Lamuk Zaveri et al
EPI_ISL_495243		
CSIR-Centre for Cellular and Molecular Biology	CSIR-Centre for Cellular and Molecular Biology	Nikhil Hajirnis et al
EPI_ISL_539655		
CSIR-Centre for Cellular and Molecular Biology	CSIR-Centre for Cellular and Molecular Biology	Pratheus a Maccha et al
EPI_ISL_528856		
CSIR-Centre for Cellular and Molecular Biology	CSIR-Centre for Cellular and Molecular Biology	Sakshi Shambha vi et al
EPI_ISL_539756		
CSIR-Centre for Cellular and Molecular Biology	CSIR-Centre for Cellular and Molecular Biology	Shagufta Khan et al
EPI_ISL_447562, EPI_ISL_447849		
CSIR-Centre for Cellular and Molecular Biology	CSIR-Centre for Cellular and Molecular Biology	Sofia Banu et al
EPI_ISL_447564		
CSIR-Centre for Cellular and Molecular Biology	CSIR-Centre for Cellular and Molecular Biology	Tulasi Nagaban di et al
EPI_ISL_450331		
CSSS de Port-Cartier	Laboratoire de santé publique du Québec	Sandrine Moreira et al
EPI_ISL_536109		
DB Diagnósticos do Brasil	Instituto de Medicina Tropical da Univesidade de São Paulo	Samples: Nelson Gaburo Jr et al
EPI_ISL_476224		

deCODE genetics	deCODE genetics	Daniel F Gudbjartsson et al
EPI_ISL_417663		
Defence Research & Development Establishment (DRDE)	Defence Research & Development Establishment (DRDE)	Shashi Sharma et al
EPI_ISL_476896		
Departamento de Microbiología, CDB, Hospital Clínic, Barcelona	SeqCOVID-SPAIN consortium/IBV(CSIC)	Andrea Vergara et al
EPI_ISL_508645		
Department for Virology, Molecular Biology and Genome Research, R. G. Lugar Center for Public Health Research, National Center for Disease Control and Public Health (NCDC) of Georgia.	Department for Virology, Molecular Biology and Genome Research, R. G. Lugar Center for Public Health Research, National Center for Disease Control and Public Health (NCDC) of Georgia.	Gvantsa Chanturia et al
EPI_ISL_420144		
Department of Clinical Microbiology	GIGA Medical Genomics	Durkin Keith et al
EPI_ISL_417009		
Department of Clinical Microbiology	GIGA Medical Genomics	Keith Durkin et al
EPI_ISL_421185, EPI_ISL_421199, EPI_ISL_498145, EPI_ISL_498149, EPI_ISL_498150, EPI_ISL_498628, EPI_ISL_515056, EPI_ISL_515057, EPI_ISL_515060, EPI_ISL_515061, EPI_ISL_515064, EPI_ISL_515065, EPI_ISL_515066, EPI_ISL_515069, EPI_ISL_515070, EPI_ISL_515073, EPI_ISL_515074, EPI_ISL_515076, EPI_ISL_515079, EPI_ISL_515081, EPI_ISL_540471, EPI_ISL_540476, EPI_ISL_540477, EPI_ISL_540479, EPI_ISL_540484, EPI_ISL_540487, EPI_ISL_540488, EPI_ISL_540490, EPI_ISL_540492, EPI_ISL_540494, EPI_ISL_540495, EPI_ISL_540498, EPI_ISL_540500, EPI_ISL_540501, EPI_ISL_540504, EPI_ISL_540507, EPI_ISL_540509, EPI_ISL_540510, EPI_ISL_540512, EPI_ISL_540514, EPI_ISL_540515, EPI_ISL_540516, EPI_ISL_540517, EPI_ISL_540520, EPI_ISL_540521, EPI_ISL_540522, EPI_ISL_540523, EPI_ISL_540524, EPI_ISL_540525, EPI_ISL_540526, EPI_ISL_540528, EPI_ISL_540529, EPI_ISL_540531, EPI_ISL_540532, EPI_ISL_540533, EPI_ISL_540534, EPI_ISL_540535, EPI_ISL_540537, EPI_ISL_540538, EPI_ISL_540539, EPI_ISL_540541, EPI_ISL_540543, EPI_ISL_540545, EPI_ISL_540547, EPI_ISL_540548, EPI_ISL_540551, EPI_ISL_540553, EPI_ISL_540554, EPI_ISL_540555, EPI_ISL_540556, EPI_ISL_540557, EPI_ISL_540558, EPI_ISL_540559, EPI_ISL_540560, EPI_ISL_540561, EPI_ISL_540563, EPI_ISL_540564, EPI_ISL_540565, EPI_ISL_540566, EPI_ISL_540567, EPI_ISL_540568, EPI_ISL_540570, EPI_ISL_540571, EPI_ISL_540572, EPI_ISL_540573,		

EPI_ISL_540575, EPI_ISL_540576, EPI_ISL_540577, EPI_ISL_540578, EPI_ISL_447120, EPI_ISL_447121		
Department of Clinical Microbiology, Copenhagen University Hospital, Hvidovre, Kettegaard Alle 30, 2650 Hvidovre.	Albertsen lab, Department of Chemistry and Bioscience, Aalborg University, Denmark	Rasmus Kirkegaard et al
EPI_ISL_451994, EPI_ISL_452007, EPI_ISL_452024, EPI_ISL_429266, EPI_ISL_429295		
Department of Food Safety, Nutrition and Veterinary public health, Istituto Superiore di Sanita'	Department of Biomedical, Surgical and Dental Sciences and Department of Biomedical Sciences for Health	Delbue et al
EPI_ISL_487276		
Department of Infection Prevention and Infectious Diseases, University Hospital Regensburg	Department of Infection Prevention and Infectious Diseases, University Hospital Regensburg	Fritsch et al
EPI_ISL_522407, EPI_ISL_522408		
Department of Infection Prevention and Infectious Diseases, University Hospital Regensburg	University Hospital Regensburg	Fritsch et al
EPI_ISL_513307, EPI_ISL_513298, EPI_ISL_513299, EPI_ISL_513300, EPI_ISL_513301, EPI_ISL_513302, EPI_ISL_513303, EPI_ISL_513305, EPI_ISL_513306		
Department of Infectious Diseases, Cantonal Hospital Baden	Institute of Medical Virology, University of Zurich	Stefan Schmutz et al
EPI_ISL_524474, EPI_ISL_524480, EPI_ISL_524481		
Department of Infectious Diseases, Istituto Superiore di Sanità, Roma , Italy	Army Medical and Veterinary Research Center	Paola Stefanelli et al
EPI_ISL_457732, EPI_ISL_457724, EPI_ISL_457736, EPI_ISL_457721		
Department of Infectious Diseases, Istituto Superiore di Sanità, Roma , Italy	Virology Laboratory, Scientific Department, Army Medical Center	Paola Stefanelli et al
EPI_ISL_412973		
Department of Internal Medicine, Triemli Hospital	Institute of Medical Virology, University of Zurich	Stefan Schmutz et al
EPI_ISL_413019, EPI_ISL_413020		
Department of Laboratory Medicine, Tan Tock Seng Hospital	Department of Laboratory Medicine, Tan Tock Seng Hospital	Chen YYC et al

EPI_ISL_476816, EPI_ISL_538460		
Department of Medical Microbiology, University Malaya Medical Centre	Department of Medical Microbiology, Faculty of Medicine, University of Malaya	Yoong Min CHONG et al
EPI_ISL_501193, EPI_ISL_501224, EPI_ISL_501226		
Department of Medical Microbiology, Western Sussex Hospitals NHS Foundation Trust, St Richard's Hospital	Wellcome Sanger Institute for the COVID-19 Genomics UK Consortium	Manasa Mutingw ende et al
EPI_ISL_492910, EPI_ISL_492915, EPI_ISL_492886		
Department of Microbiology, The University of Hong Kong	Department of Microbiology, The University of Hong Kong	Kelvin K.W. To et al
EPI_ISL_497796, EPI_ISL_497802		
Department of Pathology, University of Cambridge	COVID-19 Genomics UK (COG-UK) Consortium	Luke W Meredith et al
EPI_ISL_447998, EPI_ISL_514451, EPI_ISL_425236, EPI_ISL_425250, EPI_ISL_433667, EPI_ISL_433693, EPI_ISL_425287, EPI_ISL_425314, EPI_ISL_425315, EPI_ISL_425318, EPI_ISL_425324, EPI_ISL_425327, EPI_ISL_425423, EPI_ISL_425433, EPI_ISL_433729, EPI_ISL_433730, EPI_ISL_433848, EPI_ISL_433486		
Department of Pathology, University of Cambridge	Wellcome Sanger Institute for the COVID-19 Genomics UK Consortium	Luke W Meredith et al
EPI_ISL_443656, EPI_ISL_470351, EPI_ISL_470141, EPI_ISL_489520, EPI_ISL_489476, EPI_ISL_489544, EPI_ISL_459472, EPI_ISL_439656, EPI_ISL_439545, EPI_ISL_440109, EPI_ISL_439997, EPI_ISL_440405, EPI_ISL_440473, EPI_ISL_438505, EPI_ISL_438437, EPI_ISL_439484, EPI_ISL_441143, EPI_ISL_441224, EPI_ISL_441303, EPI_ISL_441333, EPI_ISL_441664, EPI_ISL_441710, EPI_ISL_441592, EPI_ISL_470485, EPI_ISL_442870, EPI_ISL_443029, EPI_ISL_440490, EPI_ISL_440553		
Department of Virology	Department of Virology	Boehmer et al
EPI_ISL_450209, EPI_ISL_450200, EPI_ISL_450198		
Department of Virology and Immunology, University of Helsinki and Helsinki University Hospital, Huslab Finland	Department of Virology, Faculty of Medicine, University of Helsinki, Helsinki, Finland	Teemu Smura et al
EPI_ISL_418403		

Department of Virus and Microbiological Special Diagnostics, Statens Serum Institut, Copenhagen, Denmark, Artillerivej 5, 2300 Copenhagen S	Albertsen lab, Department of Chemistry and Bioscience, Aalborg University, Denmark	Rasmus Kirkegaard et al
EPI_ISL_444821, EPI_ISL_437642, EPI_ISL_437647, EPI_ISL_437657, EPI_ISL_437000, EPI_ISL_444893, EPI_ISL_429334, EPI_ISL_429354, EPI_ISL_429371, EPI_ISL_429410, EPI_ISL_429433, EPI_ISL_429437, EPI_ISL_429440, EPI_ISL_429453, EPI_ISL_429498, EPI_ISL_429516		
Department of Virus and Microbiological Special diagnostics, Statens Serum Institut, Copenhagen, Denmark.	Statens Serum Institute	Morten Rasmussen et al
EPI_ISL_415647		
Department of Virus and Microbiological Special diagnostics, Statens Serum Institut, Copenhagen, Denmark.	VIFU	Morten Rasmussen et al
EPI_ISL_415646		
Diagnostic- and Research Institute of Pathology, Medical University of Graz	Diagnostic- and Research Institute of Pathology, Medical University of Graz	Karl Kashofer et al
EPI_ISL_437197, EPI_ISL_437300, EPI_ISL_437198, EPI_ISL_437201		
Division of Infectious Diseases and Hospital Epidemiology, University Hospital Zürich	Institute of Medical Virology, University of Zurich	Maryam Zaheri et al
EPI_ISL_508865, EPI_ISL_508867, EPI_ISL_508869, EPI_ISL_509222		
Division of Infectious Diseases and Hospital Epidemiology, University Hospital Zürich	Institute of Medical Virology, University of Zurich	Verena Kufner et al
EPI_ISL_508864, EPI_ISL_508866, EPI_ISL_508868, EPI_ISL_508870		
Division of Infectious Diseases, University Hospital Zurich	Institute of Medical Virology, University of Zurich	Stefan Schmutz et al
EPI_ISL_413022, EPI_ISL_413023, EPI_ISL_413024		
Division of Infectious Diseases, University Hospital Zürich	Institute of Medical Virology, University of Zurich	Stefan Schmutz et al
EPI_ISL_524475, EPI_ISL_524477		

Division of Infectious Diseases, University Hospital Zürich	Institute of Medical Virology, University of Zurich	Verena Kufner et al
EPI_ISL_524483, EPI_ISL_524485		
Division of Viral Diseases, Center for Laboratory Control of Infectious Diseases, Korea Centers for Diseases Control and Prevention	Division of Viral Diseases, Center for Laboratory Control of Infectious Diseases, Korea Centers for Diseases Control and Prevention	Jeong- Min Kim et al
EPI_ISL_426182, EPI_ISL_471444, EPI_ISL_497985, EPI_ISL_498032, EPI_ISL_498044		
Dr. Georges-L.-Dumont University Hospital Centre	National Microbiology Laboratory	Anna Majer et al
EPI_ISL_429806, EPI_ISL_429811		
Dutch COVID-19 response team	Erasmus Medical Center	Bas Oude Munnink et al
<p>EPI_ISL_523121, EPI_ISL_523137, EPI_ISL_455115, EPI_ISL_523273, EPI_ISL_523275, EPI_ISL_523277, EPI_ISL_523280, EPI_ISL_460657, EPI_ISL_422641, EPI_ISL_461039, EPI_ISL_422684, EPI_ISL_422685, EPI_ISL_422693, EPI_ISL_422701, EPI_ISL_422720, EPI_ISL_422742, EPI_ISL_422762, EPI_ISL_422763, EPI_ISL_422785, EPI_ISL_455129, EPI_ISL_455133, EPI_ISL_455134, EPI_ISL_455167, EPI_ISL_455170, EPI_ISL_460759, EPI_ISL_461106, EPI_ISL_422843, EPI_ISL_422850, EPI_ISL_523343, EPI_ISL_523381, EPI_ISL_523416, EPI_ISL_461151, EPI_ISL_461152, EPI_ISL_461164, EPI_ISL_422868, EPI_ISL_422876, EPI_ISL_422889, EPI_ISL_523534, EPI_ISL_523535, EPI_ISL_523537, EPI_ISL_523540, EPI_ISL_523541, EPI_ISL_523542, EPI_ISL_523543, EPI_ISL_523546, EPI_ISL_422898, EPI_ISL_523599, EPI_ISL_523606, EPI_ISL_523611, EPI_ISL_523641, EPI_ISL_523643, EPI_ISL_523644, EPI_ISL_523646, EPI_ISL_523663, EPI_ISL_523687, EPI_ISL_523697, EPI_ISL_523698, EPI_ISL_523699, EPI_ISL_523701, EPI_ISL_523702, EPI_ISL_523706, EPI_ISL_523707, EPI_ISL_523709, EPI_ISL_523711, EPI_ISL_523712, EPI_ISL_523713, EPI_ISL_523716, EPI_ISL_523718, EPI_ISL_523721, EPI_ISL_523722, EPI_ISL_523723, EPI_ISL_523724, EPI_ISL_523725, EPI_ISL_523729, EPI_ISL_523730, EPI_ISL_523738, EPI_ISL_523740, EPI_ISL_523741, EPI_ISL_523743, EPI_ISL_523747, EPI_ISL_523748, EPI_ISL_523749, EPI_ISL_523751, EPI_ISL_523753, EPI_ISL_523754, EPI_ISL_523756, EPI_ISL_523757, EPI_ISL_523758, EPI_ISL_523760, EPI_ISL_523763, EPI_ISL_523764, EPI_ISL_523768, EPI_ISL_523769, EPI_ISL_523772, EPI_ISL_523773, EPI_ISL_523774, EPI_ISL_523775, EPI_ISL_523777, EPI_ISL_523779, EPI_ISL_523780, EPI_ISL_523785, EPI_ISL_523787, EPI_ISL_523790, EPI_ISL_523792, EPI_ISL_523793, EPI_ISL_523794, EPI_ISL_523795, EPI_ISL_523796, EPI_ISL_523804, EPI_ISL_523805, EPI_ISL_523806, EPI_ISL_461260, EPI_ISL_422901, EPI_ISL_461316, EPI_ISL_422918, EPI_ISL_422924, EPI_ISL_422941, EPI_ISL_523471, EPI_ISL_523512, EPI_ISL_523515</p>		

Dutch COVID-19 response team	Erasmus Medical Center	David Nieuwenhuijse et al
EPI_ISL_415468, EPI_ISL_415487, EPI_ISL_414536, EPI_ISL_415511, EPI_ISL_414442, EPI_ISL_414554, EPI_ISL_414551, EPI_ISL_414562, EPI_ISL_414564, EPI_ISL_415530, EPI_ISL_415535		
Dutch COVID-19 response team	National Institute for Public Health and the Environment (RIVM)	Adam Meijer et al
EPI_ISL_547461, EPI_ISL_454789, EPI_ISL_454794, EPI_ISL_454750, EPI_ISL_454755, EPI_ISL_547513, EPI_ISL_454767, EPI_ISL_454771, EPI_ISL_454785		
EHPAD - Résidences les Cèdres	National Reference Center for Viruses of Respiratory Infections, Institut Pasteur, Paris	Mélanie Albert et al
EPI_ISL_418226		
Emergency county Hospital Suceava	Stefan cel Mare University Metagenomics Lab	Lobiuc Andrei et al. et al
EPI_ISL_486855		
Federal Budget Institution of Science, State Research Center for Applied Microbiology & Biotechnology	Federal Budget Institution of Science, State Research Center for Applied Microbiology & Biotechnology	Dyatlov I et al
EPI_ISL_451970		
Félix Guyon Hospital	UMR PIMIT Université de La Réunion	David Wilkinson et al
EPI_ISL_522550		
FL Bureau of Public Health Laboratories-Tampa	Pathogen Discovery, Respiratory Viruses Branch, Division of Viral Diseases, Centers for Disease Control and Prevention	Anna Uehara et al
EPI_ISL_419559		
Florida Bureau of Public Health Laboratories	Florida Bureau of Public Health Laboratories	Sarah Schmedes et al
EPI_ISL_489764, EPI_ISL_509784, EPI_ISL_509785, EPI_ISL_509794, EPI_ISL_509796, EPI_ISL_512572, EPI_ISL_514202, EPI_ISL_517816, EPI_ISL_517850, EPI_ISL_517902, EPI_ISL_517914, EPI_ISL_517928, EPI_ISL_517930, EPI_ISL_517948, EPI_ISL_517950, EPI_ISL_526585, EPI_ISL_526597, EPI_ISL_526598, EPI_ISL_526610, EPI_ISL_526612, EPI_ISL_526619, EPI_ISL_526621, EPI_ISL_526636, EPI_ISL_526652, EPI_ISL_526653, EPI_ISL_526659, EPI_ISL_526665, EPI_ISL_526675, EPI_ISL_526685, EPI_ISL_568642		

Florida Bureau of Public Health Laboratories, Florida Department of Health	Florida Bureau of Public Health Laboratories, Florida Department of Health	Schmedes et al
EPI_ISL_541197, EPI_ISL_541168, EPI_ISL_541263, EPI_ISL_541312		
FSBSI "Chumakov Federal Scientific Center for Research and Development of Immune-and-Biological Products of Russian Academy of Sciences"	FSBSI "Chumakov Federal Scientific Center for Research and Development of Immune-and-Biological Products of Russian Academy of Sciences" & NRC "Kurchatov institute"	Liubov Kozlovskaya et al
EPI_ISL_428851		
Fujian Center for Disease Control and Prevention	Fujian Center for Disease Control and Prevention	Lin Qi et al
EPI_ISL_431779		
Fukui Prefectural Institute of Public Health and Environmental Science	Pathogen Genomics Center, National Institute of Infectious Diseases	Tsuyoshi Sekizuka et al
EPI_ISL_479970, EPI_ISL_480128		
Furst Medical Laboratory	Norwegian Institute of Public Health, Department of Virology	Kathrine Stene-Johansen et al
EPI_ISL_549168		
General Hospital - Kumanovo	Research Center for Genetic Engineering and Biotechnology "Georgi D. Efremov", Macedonian Academy of Sciences and Arts	RCGEB - MASA et al
EPI_ISL_516413		
General Hospital of Central Theater Command of People's Liberation Army of China	BGI & Institute of Microbiology, Chinese Academy of Sciences & Shandong First Medical University & Shandong Academy of Medical Sciences & General Hospital of Central Theater Command of People's Liberation Army of China	Weijun Chen et al
EPI_ISL_406798		
General Intensive Care Unit, Raymond Poincaré Hospital (AP-HP), Lab Inflammation & Infection, U1173 University Paris Saclay-UVSQ/INSERM, Garches, France.	Institut Pasteur, Laboratory for Urgent Response to biological Threats	Annane Djillali et al
EPI_ISL_430846		

Genomic Laboratory (GLAB) (Conjoint lab of Health Directorate of Istanbul and Istanbul Technical University)	Genomic Laboratory (GLAB), Istanbul Technical University	Ilker Karacan et al
EPI_ISL_480244		
GH Nord Essonne Service de Biologie clinique	National Reference Center for Viruses of Respiratory Infections, Institut Pasteur, Paris	Mélanie Albert et al
EPI_ISL_428351, EPI_ISL_428363		
Gorgas Memorial Laboratory of Health Studies	Gorgas Memorial Laboratory of Health Studies	Danilo Franco et al
EPI_ISL_496614		
Government General Hospital, Jam Khambhaliya, Devbhoomi Dwarka	Gujarat Biotechnology Research Centre	Harish Matani et al
EPI_ISL_524735		
Government Medical College, Bhavnagar	Gujarat Biotechnology Research Centre	Dinesh Kumar et al
EPI_ISL_495025		
Grupo de Investigaciones Microbiológicas-UR (GIMUR), Departamento de Biología, Facultad de Ciencias Naturales, Universidad del Rosario, Bogotá, Colombia	Grupo de Investigaciones Microbiológicas-UR (GIMUR), Departamento de Biología, Facultad de Ciencias Naturales, Universidad del Rosario, Bogotá, Colombia Instituto Nacional de Salud, Bogotá, Colombia Icahn School of Medicine at Mount Sinai, New York, USA	Juan David Ramírez et al
EPI_ISL_447751		
Guangdong Provincial Center for Diseases Control and Prevention; Guangdong Provincial Institute of Public Health	School of Public Health, The University of Hong Kong	Bosheng Li et al
EPI_ISL_428449		
Gundersen Clinical Microbiology Laboratory	Kabara Cancer Research Institute	Craig S. Richmond et al
EPI_ISL_547672		
Gundersen Molecular Diagnostics Laboratory	Kabara Cancer Research Institute	Craig S. Richmond et al

EPI_ISL_489953, EPI_ISL_547615, EPI_ISL_547630, EPI_ISL_547641, EPI_ISL_547687, EPI_ISL_547689, EPI_ISL_547695, EPI_ISL_547702, EPI_ISL_547730, EPI_ISL_547734, EPI_ISL_547746		
H Dr Nelio Mendonca - Funchal	Instituto Nacional de Saude (INSA)	Guiomar et al et al
EPI_ISL_421457		
H Dr. Nelio Mendonca - Funchal	Instituto Nacional de Saude (INSA)	Guiomar et al et al
EPI_ISL_421461		
Halmstad klinisk mikrobiologi	The Public Health Agency of Sweden	Anna-Malin Linde et al
EPI_ISL_454445		
Halmstad klinisk mikrobiologi	The Public Health Agency of Sweden	Oskar Karlsson Lindsjo et al
EPI_ISL_469073		
Hangzhou Center for Disease Control and Prevention	Insepection Center of Hangzhou Center for Disease Control and Prevention	Yu hua et al
EPI_ISL_418510		
Hangzhou Center for Diseases Control and Prevention	Hangzhou Center for Diseases Control and Prevention	Jun Li et al
EPI_ISL_482581, EPI_ISL_482585		
Hematology Laboratory, Section of Molecular Diagnostics, University Clinical Centre, Medical University of Gdansk	Department of Virology, Faculty of Medicine, University of Helsinki, Helsinki, Finland	Maciej Grzybek et al
EPI_ISL_512300, EPI_ISL_512301		
Hong Kong Department of Health	School of Public Health, The University of Hon g Kong	Dominic N.C. Tsang et al
EPI_ISL_412028		
hopital	National Reference Center for Viruses of Respiratory Infections, Institut Pasteur, Paris	Sylvie Behillil et al
EPI_ISL_560591, EPI_ISL_560595, EPI_ISL_560596, EPI_ISL_560597		

Hopital	National Reference Center for Viruses of Respiratory Infections, Institut Pasteur, Paris	Sylvie Behillil et al
EPI_ISL_560581, EPI_ISL_560583, EPI_ISL_560584, EPI_ISL_560585, EPI_ISL_560586		
hôpital	National Reference Center for Viruses of Respiratory Infections, Institut Pasteur, Paris	Sylvie Behillil et al
EPI_ISL_560568, EPI_ISL_560569, EPI_ISL_560571, EPI_ISL_560572, EPI_ISL_560574, EPI_ISL_560575, EPI_ISL_560576, EPI_ISL_560578, EPI_ISL_560579, EPI_ISL_560580		
Hôpital Charles-LeMoyne	Laboratoire de santé publique du Québec	Sandrine Moreira et al
EPI_ISL_535874, EPI_ISL_535972, EPI_ISL_535973, EPI_ISL_536280, EPI_ISL_536281, EPI_ISL_536284, EPI_ISL_536350, EPI_ISL_450310		
Hôpital de Hull	Laboratoire de santé publique du Québec	Sandrine Moreira et al
EPI_ISL_536132, EPI_ISL_536367		
Hôpital de Saint-Eustache	Laboratoire de santé publique du Québec	Sandrine Moreira et al
EPI_ISL_536008		
Hôpital du Centre-de-la-Mauricie	Laboratoire de santé publique du Québec	Sandrine Moreira et al
EPI_ISL_536246, EPI_ISL_536251		
Hôpital du Suroît	Laboratoire de santé publique du Québec	Sandrine Moreira et al
EPI_ISL_536227		
Hôpital et Centre d'Hébergement de Sept-Iles	Laboratoire de santé publique du Québec	Sandrine Moreira et al
EPI_ISL_535991, EPI_ISL_536114		
Hopital franco britannique - Service des Urgences	National Reference Center for Viruses of Respiratory Infections, Institut Pasteur, Paris	Mélnie Albert et al
EPI_ISL_416501		

Hôpital Necker - Enfants - Malades Laboratoire de Virologie	National Reference Center for Viruses of Respiratory Infections, Institut Pasteur, Paris	Mélanie Albert et al
EPI_ISL_443295, EPI_ISL_443296, EPI_ISL_443298		
Hôpital Pierre-Boucher	Laboratoire de santé publique du Québec	Sandrine Moreira et al
EPI_ISL_536039, EPI_ISL_536096, EPI_ISL_536305, EPI_ISL_536347		
Hopital Privé de l'Est Lyonnais	CNR Virus des Infections Respiratoires - France SUD	Antonin Bal et al
EPI_ISL_418427		
Hôpital régional de Saint-Jérôme	Laboratoire de santé publique du Québec	Sandrine Moreira et al
EPI_ISL_535791		
Hôpital Robert Debré Laboratoire de Virologie	National Reference Center for Viruses of Respiratory Infections, Institut Pasteur, Paris	Mélanie Albert et al
EPI_ISL_414631		
Hospital	National Reference Center for Viruses of Respiratory Infections, Institut Pasteur, Paris	Sylvie Behillil et al
EPI_ISL_560598, EPI_ISL_560599, EPI_ISL_560600, EPI_ISL_560601, EPI_ISL_560602, EPI_ISL_560603, EPI_ISL_560604, EPI_ISL_560605, EPI_ISL_560606, EPI_ISL_560607, EPI_ISL_560608, EPI_ISL_560611, EPI_ISL_560612, EPI_ISL_560613, EPI_ISL_560614, EPI_ISL_560615, EPI_ISL_560616, EPI_ISL_560618, EPI_ISL_560619, EPI_ISL_560620, EPI_ISL_560621, EPI_ISL_560622, EPI_ISL_560623, EPI_ISL_560624, EPI_ISL_560628, EPI_ISL_560629, EPI_ISL_560630, EPI_ISL_560631, EPI_ISL_560633, EPI_ISL_560634, EPI_ISL_560635, EPI_ISL_560636, EPI_ISL_560643, EPI_ISL_560645, EPI_ISL_560646		
Hospital AZ Rivierenland	Institute of Tropical Medicine	Philippe Selhorst et al
EPI_ISL_450726		
Hospital Clínica Bíblica	Charité Virology-University of Costa Rica	Andres Moreira- Soto et al
EPI_ISL_480316, EPI_ISL_480319		
Hospital Clínico Universitario de Santiago de Compostela	SeqCOVID-SPAIN consortium/IBV(CSIC)	José Javier Costa

		Alcalde et al
EPI_ISL_510283, EPI_ISL_510293, EPI_ISL_510301		
Hospital e Maternidade Nossa Senhora das Graças	Instituto Adolfo Lutz, Interdisciplinary Procedures Center, Strategic Laboratory	Claudio Tavares Sacchi et al
EPI_ISL_547577		
Hospital General Universitario Gregorio Marañón	SeqCOVID-SPAIN consortium/IBV(CSIC)	Laura Pérez-Lago et al
EPI_ISL_510204, EPI_ISL_510222, EPI_ISL_541888, EPI_ISL_541890, EPI_ISL_541891, EPI_ISL_541895, EPI_ISL_541901, EPI_ISL_541905, EPI_ISL_541906, EPI_ISL_541907, EPI_ISL_541908, EPI_ISL_541911, EPI_ISL_541913, EPI_ISL_541914, EPI_ISL_541916, EPI_ISL_541917, EPI_ISL_541919, EPI_ISL_541920, EPI_ISL_541922, EPI_ISL_541926, EPI_ISL_541927, EPI_ISL_541928, EPI_ISL_541929, EPI_ISL_541930, EPI_ISL_541932, EPI_ISL_541933, EPI_ISL_541934, EPI_ISL_541935, EPI_ISL_541936, EPI_ISL_541937, EPI_ISL_541940		
HOSPITAL HERMINDA MARTIN CHILLAN	Instituto de Salud Publica de Chile	Andrés E Castillo et al
EPI_ISL_445331		
Hospital Israelita Albert Einstein	Instituto Adolfo Lutz, Interdisciplinary Procedures Center, Strategic Laboratory	Claudio Tavares Sacchi et al
EPI_ISL_416034		
HOSPITAL REG.LAUTARO NAVARRO AVARIA	Instituto de Salud Publica de Chile	Andrés E Castillo et al
EPI_ISL_445268		
Hospital San Pedro de Alcántara (Cáceres)	SeqCOVID-SPAIN consortium/IBV(CSIC)	Cristina Muñoz Cuevas et al
EPI_ISL_510317		
Hospital Schwyz	Institute of Medical Virology, University of Zurich	Verena Kufner et al
EPI_ISL_524484		

Hospital Universitario 12 de Octubre	Hospital Universitario 12 de Octubre	Esther Viedma et al
EPI_ISL_428709		
Hospital Universitario 12 de Octubre	Hospital Universitario 12 de Octubre	Raúl Recio et al
EPI_ISL_428696, EPI_ISL_534328		
Hospital Universitario 12 de Octubre	Hospital Universitario La Paz	Elias Dahdouh et al
EPI_ISL_417961		
Hospital Universitario Araba. Vitoria-Gasteiz	SeqCOVID-SPAIN consortium/IBV(CSIC)	Silvia Hernez Crespo et al
EPI_ISL_500232		
Hospital Universitario Araba. Vitoria-Gasteiz,	SeqCOVID-SPAIN consortium/IBV(CSIC)	Silvia Hernez Crespo et al
EPI_ISL_452706		
Hospital Universitario de Gran Canaria Dr. Negrn	SeqCOVID-SPAIN consortium/IBV(CSIC)	M. Carmen Perez Gonzalez et al
EPI_ISL_561370, EPI_ISL_537707, EPI_ISL_537795, EPI_ISL_537801		
Hospital Universitario de La Ribera (Alzira, Valencia)	SeqCOVID-SPAIN consortium/IBV(CSIC)	Olalla Martnez Macias et al
EPI_ISL_539283		
Hospital Universitario La Paz	Hospital Universitario La Paz	Mara Rodrguez et al
EPI_ISL_530034		
Hospital Universitario Virgen de las Nieves de Granada-SAS	SeqCOVID-SPAIN consortium/IBV(CSIC)	Mercedes Perez Ruiz et al

EPI_ISL_474929, EPI_ISL_510424, EPI_ISL_510440, EPI_ISL_510445, EPI_ISL_510452, EPI_ISL_510456, EPI_ISL_474920		
Houston Methodist Hospital	Houston Methodist Hospital	S. Wesley Long et al
EPI_ISL_542516, EPI_ISL_543882, EPI_ISL_543999, EPI_ISL_544116, EPI_ISL_544182, EPI_ISL_543638, EPI_ISL_544476, EPI_ISL_544531, EPI_ISL_547015, EPI_ISL_547213, EPI_ISL_547236, EPI_ISL_547237, EPI_ISL_547243, EPI_ISL_547252, EPI_ISL_547253, EPI_ISL_547306, EPI_ISL_547369, EPI_ISL_547397, EPI_ISL_547420, EPI_ISL_545962, EPI_ISL_545963, EPI_ISL_545986, EPI_ISL_546079, EPI_ISL_546654, EPI_ISL_545608, EPI_ISL_545741, EPI_ISL_545766, EPI_ISL_545771, EPI_ISL_545802, EPI_ISL_434845, EPI_ISL_434899, EPI_ISL_434801		
Humboldt County Public Health Laboratory	Chan-Zuckerberg Biohub	CZB Cliahub Consortium et al
EPI_ISL_454637		
ICMR-National Institute of Cholera and Enteric Diseases	National Institute of Biomedical Genomics	Arindam Maitra et al
EPI_ISL_455672		
Immunogenomics lab, Institute of Life Sciences, Bhubaneswar	Immunogenomics lab, Institute of Life Sciences, Bhubaneswar	Sunil Raghav et al
EPI_ISL_481118, EPI_ISL_481123		
INMI Lazzaro Spallanzani IRCCS	INMI Lazzaro Spallanzani IRCCS	Antonino Di Caro et al
EPI_ISL_419255		
INMI Lazzaro Spallanzani IRCCS	INMI Lazzaro Spallanzani IRCCS	Barbara Bartolini et al
EPI_ISL_493329		
INMI Lazzaro Spallanzani IRCCS	INMI Lazzaro Spallanzani IRCCS	Cesare E.M. Gruber et al
EPI_ISL_493330		
INMI Lazzaro Spallanzani IRCCS	INMI Lazzaro Spallanzani IRCCS	Martina Rueca et al
EPI_ISL_493328, EPI_ISL_493331		

INMI Lazzaro Spallanzani IRCCS	Laboratory of Virology, INMI Lazzaro Spallanzani IRCCS	Barbara Bartolini et al
EPI_ISL_419254		
INMI Lazzaro Spallanzani IRCCS	Laboratory of Virology, INMI Lazzaro Spallanzani IRCCS	Concetta Castilletti et al
EPI_ISL_424342		
INMI Lazzaro Spallanzani IRCCS	Laboratory of Virology, INMI Lazzaro Spallanzani IRCCS	Eleonora Lalle et al
EPI_ISL_424344		
INMI Lazzaro Spallanzani IRCCS	Laboratory of Virology, INMI Lazzaro Spallanzani IRCCS	Fabrizio Carletti et al
EPI_ISL_424343		
Innovative Genomics Institute, UC Berkeley	Innovative Genomics Institute, UC Berkeley	Stacia Wyman et al
EPI_ISL_569889, EPI_ISL_569901, EPI_ISL_569907		
Institut des Agents Infectieux (IAI) Hospices Civils de Lyon	CNR Virus des Infections Respiratoires - France SUD	Bal et al
EPI_ISL_416750		
Institut des Agents Infectieux (IAI), Hospices Civils de Lyon	CNR Virus des Infections Respiratoires - France SUD	Antonin Bal et al
EPI_ISL_509010, EPI_ISL_508872, EPI_ISL_508874, EPI_ISL_508877, EPI_ISL_418420, EPI_ISL_418423, EPI_ISL_508882, EPI_ISL_508883, EPI_ISL_418430, EPI_ISL_418431, EPI_ISL_419169, EPI_ISL_419171, EPI_ISL_419172, EPI_ISL_419173, EPI_ISL_419180, EPI_ISL_420604, EPI_ISL_420606, EPI_ISL_420607, EPI_ISL_420608, EPI_ISL_420615, EPI_ISL_420616, EPI_ISL_420621, EPI_ISL_420622, EPI_ISL_420625, EPI_ISL_508884, EPI_ISL_508885, EPI_ISL_508886, EPI_ISL_508887, EPI_ISL_508888, EPI_ISL_508889, EPI_ISL_508890, EPI_ISL_508891, EPI_ISL_508893, EPI_ISL_508894, EPI_ISL_508895, EPI_ISL_508896, EPI_ISL_508900, EPI_ISL_508901, EPI_ISL_508902, EPI_ISL_508903, EPI_ISL_508907, EPI_ISL_508908, EPI_ISL_509009, EPI_ISL_509011, EPI_ISL_509013, EPI_ISL_509014, EPI_ISL_417333, EPI_ISL_417334, EPI_ISL_417336, EPI_ISL_417339, EPI_ISL_508909, EPI_ISL_508910, EPI_ISL_508911		
Institut für Virologie am Department für Hygiene, Mikrobiologie und Public Health	Bergthaler laboratory, CeMM Research Center for Molecular Medicine of the Austrian Academy of Sciences	Alexandra Popa et al
EPI_ISL_437915, EPI_ISL_437921, EPI_ISL_437922, EPI_ISL_437924, EPI_ISL_437974, EPI_ISL_437978, EPI_ISL_437981, EPI_ISL_437988, EPI_ISL_437990, EPI_ISL_475815, EPI_ISL_475817, EPI_ISL_475820		

Institut für Virologie und Epidemiologie der Viruskrankheiten, Universitätsklinikum Tübingen	NGS Competence Center Tübingen, Institut für Medizinische Mikrobiologie und Hygiene, Universitätsklinikum Tübingen	Angel Angelov et al
EPI_ISL_508688, EPI_ISL_508689, EPI_ISL_508690, EPI_ISL_508692, EPI_ISL_508695, EPI_ISL_508696, EPI_ISL_508699		
Institut für Virologie und Epidemiologie der Viruskrankheiten, Universitätsklinikum Tübingen	NGS Competence Center Tübingen, Institut für Medizinische Mikrobiologie und Hygiene, Universitätsklinikum Tübingen	Angelov et al. et al
EPI_ISL_485809		
Institut für Virologie und Epidemiologie der Viruskrankheiten, Universitätsklinikum Tübingen	NGS Competence Center Tübingen, Institut für Medizinische Mikrobiologie und Hygiene, Universitätsklinikum Tübingen	Angelov et al. et al
EPI_ISL_485810, EPI_ISL_485811, EPI_ISL_485812, EPI_ISL_485813		
Institut Médico légal- Hop R. Poincaré	National Reference Center for Viruses of Respiratory Infections, Institut Pasteur, Paris	Mélanie Albert et al
EPI_ISL_428355, EPI_ISL_428357		
Institut Pasteur du Maroc	Institut Pasteur du Maroc	Marion Barbet et al
EPI_ISL_459977		
Institute for Medical Research, Infectious Disease Research Centre, National Institutes of Health, Ministry of Health Malaysia	Institute for Medical Research, Infectious Disease Research Centre, National Institutes of Health, Ministry of Health Malaysia	Suppiah.J et al
EPI_ISL_430440		
Institute of Clinical Microbiology and Hygiene, University Hospital Regensburg	Institute of Clinical Microbiology and Hygiene, University Hospital Regensburg	Hiergeist et al
EPI_ISL_525472, EPI_ISL_525473		
Institute of Disease Control and Prevention, People's Liberation Army	Institute of Disease Control and Prevention, People's Liberation Army	Qiu et al
EPI_ISL_539338		
Institute of Human Genetics, Polish Academy of Sciences	Institute of Human Genetics, Polish Academy of Sciences	Szymon Hryhorowicz et al
EPI_ISL_485399		

Institute of Molecular Virology, University Münster	Institute of Molecular Virology, University Münster	Angeles Mecate Zambran o et al
EPI_ISL_463008		
Instituto Gulbenkian de Ciência	Instituto Gulbenkian de Ciência	Cathy Paulino et al
EPI_ISL_491224, EPI_ISL_491226		
Instituto Gulbenkian de Ciência	Instituto Gulbenkian de Ciência	João Costa et al
EPI_ISL_491189, EPI_ISL_491192, EPI_ISL_491197		
Instituto Gulbenkian de Ciência	Instituto Gulbenkian de Ciência	Joao Sobral et al
EPI_ISL_491231, EPI_ISL_491237, EPI_ISL_491239, EPI_ISL_491242, EPI_ISL_491250, EPI_ISL_491259		
Instituto Gulbenkian de Ciência	Instituto Gulbenkian de Ciência	Susana Ladeiro et al
EPI_ISL_491291, EPI_ISL_491292		
Instituto Nacional de Investigación en Salud Pública - INSPI	INSPI - Charité	Alfredo Bruno Caicedo et al
EPI_ISL_491944		
Instituto Nacional de Salud	Laboratorio de Infecciones Respiratorias Agudas	Eduardo Juscamay ta Lopez et al
EPI_ISL_536536		
Instituto Nacional de Salud, Bogotá, Colombia	Grupo de Investigaciones Microbiológicas-UR (GIMUR), Departamento de Biología, Facultad de Ciencias Naturales, Universidad del Rosario, Bogotá, Colombia Instituto Nacional de Salud, Bogotá, Colombia Icahn School of Medicine at Mount Sinai, New York, USA	Juan David Ramírez et al
EPI_ISL_447784		

Instituto Nacional de Salud, Bogotá, Colombia	Instituto Nacional de Salud, Bogotá, Colombia	Katherine Laiton-Donato et al
EPI_ISL_498158, EPI_ISL_498162		
Instituto Nacional de Saude (INSA)	Instituto Nacional de Saude (INSA)	Borges et al et al
EPI_ISL_511030, EPI_ISL_511085, EPI_ISL_511579, EPI_ISL_511396		
Instituto Nacional de Saude (INSA)	Instituto Nacional de Saude (INSA) and Instituto Gulbenkian de Ciencia (IGC)	Borges et al et al
EPI_ISL_511493, EPI_ISL_511494		
Instituto Nacional de Saude (INSA) and Instituto Gulbenkian de Ciencia (IGC)	Instituto Nacional de Saude (INSA) and Instituto Gulbenkian de Ciencia (IGC)	Borges et al et al
EPI_ISL_511200, EPI_ISL_511219		
Instituto Sabin	Laboratory of Virology	Fernando L Melo et al
EPI_ISL_426580		
IRCCS Sacro Cuore Don Calabria Hospital, Department of Infectious, Tropical Diseases & Microbiology	University of Verona, Department of Biotechnology	Antonio Mori et al
EPI_ISL_492981, EPI_ISL_492982, EPI_ISL_492983, EPI_ISL_492984, EPI_ISL_492986, EPI_ISL_492987		
Israel Central Virology laboratory	Israel Central Virology laboratory	Neta Zuckerman et al
EPI_ISL_474961, EPI_ISL_475011, EPI_ISL_514268, EPI_ISL_514276, EPI_ISL_514288, EPI_ISL_514289, EPI_ISL_514291, EPI_ISL_514295, EPI_ISL_516905		
Istituto Zooprofilattico Sperimentale del Mezzogiorno	INMI Lazzaro Spallanzani IRCCS	Barbara Bartolini et al
EPI_ISL_493333, EPI_ISL_560407		
Istituto Zooprofilattico Sperimentale del Mezzogiorno	INMI Lazzaro Spallanzani IRCCS	Cesare E.M. Gruber et al
EPI_ISL_493332		
Istituto Zooprofilattico Sperimentale Puglia e Basilicata;	Beaconlab (Bioinformatics, Evolution and Comparative Genomics lab), Dept of Biosciences, University on Mila	Parisi A. et al

EPI_ISL_477194, EPI_ISL_477203, EPI_ISL_477202		
Istituto Zooprofilattico Sperimentale Puglia e Basilicata;	Beaconlab (Bioinformatics, Evolution and Comparative Genomics lab), Dept of Biosciences, University on Milan	Parisi A. et al
EPI_ISL_477195, EPI_ISL_477201, EPI_ISL_477200, EPI_ISL_477197, EPI_ISL_477196		
Istituto Zooprofilattico Sperimentale Puglia e Basilicata; Dipartimento di Bioscienze, Biotecnologie e Biofarmaceutica dell'Università degli Studi di Bari "A.Moro"; Istituto di Biomembrane. Bioenergetica e Biotecnologie Molecolari del Consiglio Nazionale delle Ricerche di Bari	Beaconlab (Bioinformatics Evolution and Comparative Genomics lab), Dept of Biosciences, University of Milan	Parisi A. et al
EPI_ISL_451961		
Istituto Zooprofilattico Sperimentale Puglia e Basilicata; Dipartimento di Bioscienze, Biotecnologie e Biofarmaceutica dell'Università degli Studi di Bari "A.Moro"; Istituto di Biomembrane. Bioenergetica e Biotecnologie Molecolari del Consiglio Nazionale delle Ricerche di Bari	Beaconlab (Bioinformatics, Evolution and Comparative Genomics lab), Dept of Biosciences, University on Milan	Parisi A. et al
EPI_ISL_525554, EPI_ISL_451962, EPI_ISL_525555, EPI_ISL_525557, EPI_ISL_525558, EPI_ISL_525559, EPI_ISL_527380, EPI_ISL_525560, EPI_ISL_525561, EPI_ISL_525562, EPI_ISL_525563, EPI_ISL_525564, EPI_ISL_525565, EPI_ISL_525566, EPI_ISL_525567, EPI_ISL_525568, EPI_ISL_525569, EPI_ISL_525570, EPI_ISL_525571, EPI_ISL_468914, EPI_ISL_469018, EPI_ISL_469020, EPI_ISL_469021, EPI_ISL_469022, EPI_ISL_469023, EPI_ISL_525574		
IZSM	IZSM	Maurizio Viscardi et al
EPI_ISL_572324		
Jaber Al Ahmad Al Sabah Hospital	Dasman diabetes Institute	Fahd Al- Mulla et al
EPI_ISL_422424		
Johns Hopkins Hospital Department of Pathology	Johns Hopkins Hospital Department of Pathology	Peter M. Thielen et al
EPI_ISL_457794		

Karolinska Universitetslaboratoriet	The Public Health Agency of Sweden	Anna-Malin Linde et al
EPI_ISL_454459, EPI_ISL_454460, EPI_ISL_454872, EPI_ISL_454873, EPI_ISL_454875, EPI_ISL_454878, EPI_ISL_455855, EPI_ISL_455857, EPI_ISL_455858, EPI_ISL_454886, EPI_ISL_455872, EPI_ISL_455873, EPI_ISL_455879, EPI_ISL_455890, EPI_ISL_454896		
Karolinska Universitetslaboratoriet	The Public Health Agency of Sweden	Oskar Karlsson Lindsjo et al
EPI_ISL_475558, EPI_ISL_475136, EPI_ISL_475095, EPI_ISL_510838		
Karolinska universitetslaboratoriet SOLNA	The Public Health Agency of Sweden	Anna-Malin Linde et al
EPI_ISL_534236		
Kingston Health Sciences Center	Queen's Genomics Lab at Ongwanada (Q-GLO)	Sjaarda CP et al
EPI_ISL_459869, EPI_ISL_459889		
Kingston Health Sciences Centre / Queen's University	Ontario Institute for Cancer Research	Prameet M. Sheth et al
EPI_ISL_538365, EPI_ISL_538382, EPI_ISL_538384		
Klinik Hirslanden Zurich	Institute of Medical Virology, University of Zurich	Stefan Schmutz et al
EPI_ISL_413021		
Klinik Hirslanden Zürich	Institute of Medical Virology, University of Zurich	Stefan Schmutz et al
EPI_ISL_524479		
Klinisk mikrobiologi och vardhygien Halmstad	The Public Health Agency of Sweden	Arne Kotz et al
EPI_ISL_429120, EPI_ISL_429122, EPI_ISL_429125		
Klinisk mikrobiologi Vasternorrland	The Public Health Agency of Sweden	Oskar Karlsson Lindsjo et al
EPI_ISL_510856		

Klinisk mikrobiologi, UAS	The Public Health Agency of Sweden	Anna-Malin Linde et al
EPI_ISL_455904, EPI_ISL_455905, EPI_ISL_455906		
Koshigaya City Public Health Center	Pathogen Genomics Center, National Institute of Infectious Diseases	Tsuyoshi Sekizuka et al
EPI_ISL_480108		
KU Leuven, Clinical and Epidemiological Virology	KU Leuven, Clinical and Epidemiological Virology	Bert Vanmechelen et al
EPI_ISL_416470, EPI_ISL_416471, EPI_ISL_418792, EPI_ISL_415158, EPI_ISL_418793, EPI_ISL_416472, EPI_ISL_418797		
KU Leuven, Clinical and Epidemiological Virology	KU Leuven, Clinical and Epidemiological Virology	Joan Marti-Carreras et al
EPI_ISL_417426, EPI_ISL_417425		
KU Leuven, Clinical and Epidemiological Virology	KU Leuven, Clinical and Epidemiological Virology	Joan Marti-Carreras et al
EPI_ISL_420406, EPI_ISL_420397, EPI_ISL_420447, EPI_ISL_420437, EPI_ISL_420445, EPI_ISL_420327, EPI_ISL_420364, EPI_ISL_420331, EPI_ISL_420330, EPI_ISL_420356, EPI_ISL_420314, EPI_ISL_420426, EPI_ISL_420384, EPI_ISL_420439, EPI_ISL_420443, EPI_ISL_420441, EPI_ISL_420379		
KU Leuven, Clinical and Epidemiological Virology	KU Leuven, Clinical and Epidemiological Virology	Tony Wawina et al
EPI_ISL_418270		
KU Leuven, Rega Institute, Clinical and Epidemiological Virology	KU Leuven, Rega Institute, Clinical and Epidemiological Virology	Tony Wawina-Bokalanga et al
EPI_ISL_462196, EPI_ISL_462210, EPI_ISL_462199, EPI_ISL_462223, EPI_ISL_462204, EPI_ISL_462203, EPI_ISL_462181, EPI_ISL_462193, EPI_ISL_462243, EPI_ISL_464067, EPI_ISL_458235, EPI_ISL_458158, EPI_ISL_458189, EPI_ISL_458194, EPI_ISL_458201, EPI_ISL_458206, EPI_ISL_458207, EPI_ISL_458208, EPI_ISL_458217, EPI_ISL_462232, EPI_ISL_522350		

L'Air du Temps	National Reference Center for Viruses of Respiratory Infections, Institut Pasteur, Paris	Mélanie Albert et al
EPI_ISL_420039, EPI_ISL_420040		
L'Hôpital Nord-Ouest Tarare-Grandris	CNR Virus des Infections Respiratoires - France SUD	Antonin Bal et al
EPI_ISL_508931		
La Villa Papyri	National Reference Center for Viruses of Respiratory Infections, Institut Pasteur, Paris	Mélanie Albert et al
EPI_ISL_443307		
Lab Microbiology, Pathology Department, William Harvey Hospital	Wellcome Sanger Institute for the COVID-19 Genomics UK Consortium	Samuel Moses et al
EPI_ISL_501614, EPI_ISL_501626		
Lab voor klinische biologie	Onderzoeksgroep Virologie	Laurens Lambrechts et al
EPI_ISL_425056, EPI_ISL_434349, EPI_ISL_451165		
LABM GH nord Essonne	National Reference Center for Viruses of Respiratory Infections, Institut Pasteur, Paris	Mélanie Albert et al
EPI_ISL_418234, EPI_ISL_418240		
LABM GH nord Essonne	National Reference Center for Viruses of Respiratory Infections, Institut Pasteur, Paris	Mélanie Albert et al
EPI_ISL_416499		
LABM GH nord Essonne de Longjumeau - BP 125	National Reference Center for Viruses of Respiratory Infections, Institut Pasteur, Paris	Mélanie Albert et al
EPI_ISL_428354, EPI_ISL_428361, EPI_ISL_428365, EPI_ISL_443305, EPI_ISL_443314		
Labo Analyses Med	National Reference Center for Viruses of Respiratory Infections, Institut Pasteur, Paris	Sylvie Behillil et al
EPI_ISL_560637, EPI_ISL_560638, EPI_ISL_560639, EPI_ISL_560640, EPI_ISL_560641, EPI_ISL_560642		
Labo BM - Site de Juvisy - Hopital Général	National Reference Center for Viruses of Respiratory Infections, Institut Pasteur, Paris	Mélanie Albert et al

EPI_ISL_420063		
Labor Kneißler GmbH & Co. KG	Heinrich Pette Institute, Leibniz Institute for Experimental Virology	Thomas Günther et al
EPI_ISL_476705, EPI_ISL_487400, EPI_ISL_487403, EPI_ISL_487408, EPI_ISL_487409, EPI_ISL_487410, EPI_ISL_487411, EPI_ISL_487412, EPI_ISL_487413, EPI_ISL_487414, EPI_ISL_487415, EPI_ISL_487416, EPI_ISL_487417, EPI_ISL_487418, EPI_ISL_487419, EPI_ISL_487420, EPI_ISL_487421, EPI_ISL_487422, EPI_ISL_487423, EPI_ISL_487424, EPI_ISL_487425, EPI_ISL_487427, EPI_ISL_487428		
Laboratoire de Microbiologie - Bât A - CH René Dubois	National Reference Center for Viruses of Respiratory Infections, Institut Pasteur, Paris	Mélanie Albert et al
EPI_ISL_443285, EPI_ISL_443286, EPI_ISL_443287		
Laboratoire de microbiologie, Hopital de Verdun	Smith Laboratory, Centre de Recherche CHU Sainte-Justine	Martin Smith et al
EPI_ISL_450645, EPI_ISL_463904, EPI_ISL_515214, EPI_ISL_515229		
Laboratoire de Virologie, HUG	Swiss National Reference Centre for Influenza	LAUBSCH ER F. et al
EPI_ISL_548147, EPI_ISL_548148, EPI_ISL_548149, EPI_ISL_548150, EPI_ISL_548151, EPI_ISL_548152, EPI_ISL_548153, EPI_ISL_548154, EPI_ISL_548155, EPI_ISL_548156, EPI_ISL_548157, EPI_ISL_548158, EPI_ISL_548159, EPI_ISL_548160, EPI_ISL_548161, EPI_ISL_548162, EPI_ISL_548163, EPI_ISL_548164, EPI_ISL_548165, EPI_ISL_548166, EPI_ISL_548167, EPI_ISL_548168, EPI_ISL_548169, EPI_ISL_548170, EPI_ISL_548171, EPI_ISL_548172, EPI_ISL_548173, EPI_ISL_548174, EPI_ISL_548175, EPI_ISL_548176, EPI_ISL_548177, EPI_ISL_548178, EPI_ISL_548179, EPI_ISL_548180, EPI_ISL_548181, EPI_ISL_548182, EPI_ISL_548183, EPI_ISL_548184, EPI_ISL_548185, EPI_ISL_548186, EPI_ISL_548187, EPI_ISL_548188, EPI_ISL_548189, EPI_ISL_548190, EPI_ISL_548191, EPI_ISL_548192, EPI_ISL_548193, EPI_ISL_548194, EPI_ISL_548195, EPI_ISL_548196, EPI_ISL_548197, EPI_ISL_548198, EPI_ISL_548199, EPI_ISL_548200, EPI_ISL_548201, EPI_ISL_548202, EPI_ISL_548203, EPI_ISL_548204, EPI_ISL_548205, EPI_ISL_548206, EPI_ISL_548207, EPI_ISL_548208, EPI_ISL_548209, EPI_ISL_548210, EPI_ISL_548211, EPI_ISL_548212, EPI_ISL_548213, EPI_ISL_548214, EPI_ISL_548215, EPI_ISL_548216, EPI_ISL_548217, EPI_ISL_548218, EPI_ISL_548219, EPI_ISL_548220, EPI_ISL_548221, EPI_ISL_548222, EPI_ISL_548223, EPI_ISL_548224, EPI_ISL_548225, EPI_ISL_548226, EPI_ISL_548227, EPI_ISL_548228, EPI_ISL_548229, EPI_ISL_548230, EPI_ISL_548231, EPI_ISL_548232, EPI_ISL_548233, EPI_ISL_548234, EPI_ISL_548235, EPI_ISL_548236, EPI_ISL_548237, EPI_ISL_548238, EPI_ISL_548239, EPI_ISL_548240, EPI_ISL_548241, EPI_ISL_548242		
Laboratoire de Virologie, HUG	Swiss National Reference Centre for Influenza	LAUBSCH ER

		Florian et al. et al
EPI_ISL_413999, EPI_ISL_414021, EPI_ISL_413997, EPI_ISL_414019, EPI_ISL_414020, EPI_ISL_414022, EPI_ISL_413996, EPI_ISL_414023		
Laboratoire National de Sante, Microbiology, Virology	Laboratoire National de Sante, Microbiology, Epidemiology and Microbial Genomics	Anke Wieneck e- Baldacchino et al
EPI_ISL_429712, EPI_ISL_421760, EPI_ISL_445069, EPI_ISL_421735, EPI_ISL_459896, EPI_ISL_429710, EPI_ISL_459899, EPI_ISL_459902, EPI_ISL_421755, EPI_ISL_429716, EPI_ISL_421744, EPI_ISL_429732, EPI_ISL_421734, EPI_ISL_421761, EPI_ISL_429755, EPI_ISL_429714, EPI_ISL_429759		
Laboratoire National de Santé, Microbiology, Virology	Laboratoire National de Santé, Microbiology, Epidemiology and Microbial Genomics	Anke Wieneck e- Baldacchino et al
EPI_ISL_419572, EPI_ISL_419578, EPI_ISL_419581, EPI_ISL_419584, EPI_ISL_419586, EPI_ISL_419588, EPI_ISL_419589, EPI_ISL_419593, EPI_ISL_419594, EPI_ISL_419597, EPI_ISL_419601, EPI_ISL_419602, EPI_ISL_419607		
Laboratoire Nationale de Santé, Microbiology, Virology	Laboratoire Nationale de Santé, Microbiology, Epidemiology and Microbial Genomics	Anke Wieneck e- Baldacchino et al
EPI_ISL_417531, EPI_ISL_417532		
Laboratorio Biologia Molecolare Sars Cov2 - UOC Laboratorio Analisi - Servizio Medicina di Laboratorio , Ospedale "San Francesco" - ATS- ASSL Nuoro	Laboratorio specialistico UOC Ematologia - Ospedale "San Francesco" - ATS-ASSL Nuoro	Piras Giovanna et al
EPI_ISL_458085		
Laboratorio Biologia Molecolare Sars Cov2 - UOC Laboratorio Analisi - Servizio Medicina di Laboratorio, Ospedale "San Francesco" - ATS-ASSL Nuoro	Laboratorio specialistico UOC Ematologia - Ospedale "San Francesco" - ATS-ASSL Nuoro	Piras Giovanna et al
EPI_ISL_458084		
Laboratorio de Biologia Molecular, Facultad de Medicina, Universidad de Atacama	Center for Mathematical Modeling and Center for Genome Regulation. Santiago, Chile	Gaete A et al
EPI_ISL_468759		

Laboratorio de Infecciones Respiratorias Agudas. Centro Nacional de Salud Publica, Instituto Nacional de Salud	Laboratorio de Infecciones Respiratorias Agudas. Centro Nacional de Salud Publica, Instituto Nacional de Salud	Juscamayta et al
EPI_ISL_547890		
Laboratorio de Referencia Nacional de Virus Respiratorios, Instituto Nacional de Salud Peru	Laboratorio de Genómica Microbiana, Universidad Peruana Cayetano Heredia	Pablo Tsukayama et al
EPI_ISL_568516		
Laboratorio di Microbiologia e Virologia, Università Vita-Salute San Raffaele, Milano	Laboratorio di Microbiologia e Virologia, Università Vita-Salute San Raffaele, Milano	R.A Diotti et al
EPI_ISL_413489		
Laboratory for Respiratory Viruses, National Influenza Centre, Cantacuzino National Military-Medical Institute for Research and Development	Cantacuzino Institute	Luiza Ustea et al
EPI_ISL_471420, EPI_ISL_471416, EPI_ISL_471419, EPI_ISL_471424		
Laboratory for Urgent Response to Biological Threats	Institut Pasteur CIBU /ERI	V. Caro et al
EPI_ISL_437690		
Laboratory of Applied Genetics	RSE "National Center for Biotechnology"	Shevtsov et al
EPI_ISL_435047		
Laboratory of Infectious Diseases Center of Beijing Ditan Hospital	Laboratory of Infectious Diseases Center of Beijing Ditan Hospital	Siyuan Yang et al
EPI_ISL_452343, EPI_ISL_452347, EPI_ISL_452341, EPI_ISL_452339		
Laboratory of Microbiology, Medical School, National and Kapodistrian University of Athens	Laboratory of Biology, Department of Medicine, Democritus University of Thrace	Kassela K. et al
EPI_ISL_434479, EPI_ISL_434471		
Laboratory of Molecular Virology International Center for Genetic Engineering and Biotechnology (ICGEB)	ARGO Open Lab Platform for Genome sequencing	Licastro D et al
EPI_ISL_417423		
Laboratory of Molecular Virology International Center for Genetic Engineering and Biotechnology (ICGEB)	ARGO Open Lab Platform for Genome Sequencing	Licastro D et al
EPI_ISL_428853, EPI_ISL_498559, EPI_ISL_498560, EPI_ISL_498561, EPI_ISL_498562, EPI_ISL_498563		

Laboratory of Molecular Virology International Center for Genetic Engineering and Biotechnology (ICGEB)	ARGO Open Lab Platform for Genome sequencing	Licastro D et al
EPI_ISL_417418		
Laboratory of Molecular Virology of the International Centre for Genetic Engineering and Biotechnology (ICGEB)	ARGO Open Lab Platform for Genome Sequencing	Licastro et al
EPI_ISL_479791, EPI_ISL_479619, EPI_ISL_479790, EPI_ISL_479618		
Laboratory of Virology, INMI Lazzaro Spallanzani IRCCS	Laboratory of Virology, INMI Lazzaro Spallanzani IRCCS	Cesare E.M. Gruber et al
EPI_ISL_451304		
Laboratory of Virology, INMI Lazzaro Spallanzani IRCCS	Laboratory of Virology, INMI Lazzaro Spallanzani IRCCS	Martina Rueca et al
EPI_ISL_451305, EPI_ISL_451303		
Lanssjukhuset Kalmar	The Public Health Agency of Sweden	Anna- Malin Linde et al
EPI_ISL_534237		
Le Château de Seine-Port	National Reference Center for Viruses of Respiratory Infections, Institut Pasteur, Paris	Mélanie Albert et al
EPI_ISL_421507		
Leeds Teaching Hospitals NHS Trust and Public Health England, National Infection Service (Leeds laboratory)	Wellcome Sanger Institute for the COVID-19 Genomics UK Consortium	Louissa Macfarlane- Smith et al
EPI_ISL_538988, EPI_ISL_538995, EPI_ISL_539015, EPI_ISL_539144, EPI_ISL_539124, EPI_ISL_538831, EPI_ISL_538947, EPI_ISL_538974		
Lighthouse Lab in Alderley Park	Wellcome Sanger Institute for the COVID-19 Genomics UK Consortium	The Lighthouse Lab in Alderley Park et al
EPI_ISL_559311, EPI_ISL_559408, EPI_ISL_559380, EPI_ISL_559327, EPI_ISL_559556, EPI_ISL_559577, EPI_ISL_559343, EPI_ISL_558902, EPI_ISL_558660, EPI_ISL_558765, EPI_ISL_555015, EPI_ISL_552731, EPI_ISL_552773, EPI_ISL_552539		

Lighthouse Lab in Cambridge	Wellcome Sanger Institute for the COVID-19 Genomics UK Consortium	Rob Howes et al
EPI_ISL_556861, EPI_ISL_556858, EPI_ISL_556848, EPI_ISL_551910, EPI_ISL_551849, EPI_ISL_552173		
Lighthouse Lab in Glasgow	Wellcome Sanger Institute for the COVID-19 Genomics UK Consortium	Harper VanSteenhouse et al
EPI_ISL_532268, EPI_ISL_533431, EPI_ISL_532889, EPI_ISL_532743, EPI_ISL_532544, EPI_ISL_532548, EPI_ISL_532618, EPI_ISL_536971, EPI_ISL_537087, EPI_ISL_537141, EPI_ISL_532291, EPI_ISL_532504, EPI_ISL_532092, EPI_ISL_532001, EPI_ISL_537063, EPI_ISL_537081, EPI_ISL_531600, EPI_ISL_531621, EPI_ISL_531710, EPI_ISL_531089, EPI_ISL_530839, EPI_ISL_531323, EPI_ISL_531290, EPI_ISL_530814, EPI_ISL_530694, EPI_ISL_530788, EPI_ISL_530641, EPI_ISL_530724, EPI_ISL_530467, EPI_ISL_530486, EPI_ISL_540245, EPI_ISL_540306, EPI_ISL_540259, EPI_ISL_540263, EPI_ISL_540395, EPI_ISL_540095, EPI_ISL_540029, EPI_ISL_540070, EPI_ISL_530380, EPI_ISL_530358, EPI_ISL_530352, EPI_ISL_537175, EPI_ISL_537180, EPI_ISL_540042, EPI_ISL_540014, EPI_ISL_540056, EPI_ISL_539986, EPI_ISL_540086, EPI_ISL_541818, EPI_ISL_541835, EPI_ISL_532897, EPI_ISL_532676, EPI_ISL_532643, EPI_ISL_532520, EPI_ISL_531985, EPI_ISL_531751, EPI_ISL_530576, EPI_ISL_540243, EPI_ISL_539919		
Lighthouse Lab in Milton Keynes	Wellcome Sanger Institute for the COVID-19 Genomics UK Consortium	The Lighthouse Lab in Alderley Park et al
EPI_ISL_553008		
Lighthouse Lab in Milton Keynes	Wellcome Sanger Institute for the COVID-19 Genomics UK Consortium	The Lighthouse Lab in Milton Keynes et al
EPI_ISL_558284, EPI_ISL_557941, EPI_ISL_557963, EPI_ISL_556109, EPI_ISL_557191, EPI_ISL_557413, EPI_ISL_557168, EPI_ISL_557225, EPI_ISL_557277, EPI_ISL_553265, EPI_ISL_553192, EPI_ISL_553147, EPI_ISL_553088, EPI_ISL_553081, EPI_ISL_553205, EPI_ISL_553074, EPI_ISL_553214, EPI_ISL_552609, EPI_ISL_552454, EPI_ISL_552710, EPI_ISL_552450, EPI_ISL_552536, EPI_ISL_552661, EPI_ISL_552610, EPI_ISL_552656, EPI_ISL_552687, EPI_ISL_552472, EPI_ISL_552743, EPI_ISL_550435, EPI_ISL_552400, EPI_ISL_552067, EPI_ISL_552152, EPI_ISL_552078, EPI_ISL_552025, EPI_ISL_552336, EPI_ISL_552226, EPI_ISL_552318, EPI_ISL_551653, EPI_ISL_552297, EPI_ISL_552320, EPI_ISL_552331, EPI_ISL_552235, EPI_ISL_551695, EPI_ISL_551732, EPI_ISL_551595, EPI_ISL_551690, EPI_ISL_550303, EPI_ISL_550267, EPI_ISL_550269, EPI_ISL_550415,		

EPI_ISL_550288, EPI_ISL_550307, EPI_ISL_550644, EPI_ISL_550577, EPI_ISL_549891, EPI_ISL_550791, EPI_ISL_549857, EPI_ISL_550589, EPI_ISL_550704, EPI_ISL_550617, EPI_ISL_550944, EPI_ISL_551221		
Lithuanian University of Health Sciences Hospital, Department of Laboratory Medicine	Lithuanian University of Health Sciences, Laboratory of Molecular Cardiology	Lukas Zemaitis et al
EPI_ISL_541848, EPI_ISL_541853		
Liverpool Clinical Laboratories	COVID-19 Genomics UK (COG-UK) Consortium	Sam Haldenby et al
EPI_ISL_439701, EPI_ISL_440856, EPI_ISL_449469, EPI_ISL_478378, EPI_ISL_500022, EPI_ISL_500025, EPI_ISL_500033, EPI_ISL_500046, EPI_ISL_499876, EPI_ISL_500084, EPI_ISL_500086, EPI_ISL_500102, EPI_ISL_500151, EPI_ISL_499642, EPI_ISL_499632, EPI_ISL_499753, EPI_ISL_499754, EPI_ISL_499767, EPI_ISL_517010, EPI_ISL_517011, EPI_ISL_517089, EPI_ISL_517250		
M Health Fairview	Minnesota Department of Health, Public Health Laboratory	Matt Plumb et al
EPI_ISL_560800		
MA State Public Health Laboratory	Pathogen Discovery, Respiratory Viruses Branch, Division of Viral Diseases, Centers for Disease Control and Prevention	Ying Tao et al
EPI_ISL_424918		
Maine HETL	Tewhey Lab, The Jackson Laboratory	Matluk et al
EPI_ISL_513492, EPI_ISL_513496		
Maison de Santé du Val d'Ormois	National Reference Center for Viruses of Respiratory Infections, Institut Pasteur, Paris	Mélanie Albert et al
EPI_ISL_428348		
Maryland Department of Health	Maryland Department of Health	Maryland Departm ent of Health Laborato ries Administ ration et al
EPI_ISL_522851		
Massachusetts General Hospital	Infectious Disease Program, Broad Institute of Harvard and MIT	Lemieux et al

EPI_ISL_460472, EPI_ISL_460333, EPI_ISL_460231		
Max von Pettenkofer Institute, Virology, National Reference Center for Retroviruses, LMU München	Laboratory for Functional Genome Analysis, Dept. Genomics, Gene Center of the LMU Munich	Max Muenchh off et al
EPI_ISL_548949, EPI_ISL_548950, EPI_ISL_549025, EPI_ISL_548952, EPI_ISL_548953, EPI_ISL_548958, EPI_ISL_548960, EPI_ISL_437359, EPI_ISL_437204, EPI_ISL_437205, EPI_ISL_437206, EPI_ISL_437208, EPI_ISL_437209, EPI_ISL_437210, EPI_ISL_437211, EPI_ISL_437212, EPI_ISL_437214, EPI_ISL_437215, EPI_ISL_437216, EPI_ISL_437217, EPI_ISL_437218, EPI_ISL_437221, EPI_ISL_437223, EPI_ISL_437224, EPI_ISL_437225, EPI_ISL_437227, EPI_ISL_437228, EPI_ISL_437232, EPI_ISL_437234, EPI_ISL_437235, EPI_ISL_437237, EPI_ISL_437238, EPI_ISL_437239, EPI_ISL_437240, EPI_ISL_437241, EPI_ISL_437243, EPI_ISL_437245, EPI_ISL_437246, EPI_ISL_437247, EPI_ISL_437249, EPI_ISL_437250, EPI_ISL_437251, EPI_ISL_437252, EPI_ISL_437253, EPI_ISL_437254, EPI_ISL_437255, EPI_ISL_437256, EPI_ISL_437257, EPI_ISL_437258, EPI_ISL_437259, EPI_ISL_437260, EPI_ISL_437262, EPI_ISL_437263, EPI_ISL_437264, EPI_ISL_437265, EPI_ISL_437266, EPI_ISL_437267, EPI_ISL_437268, EPI_ISL_437269, EPI_ISL_437270, EPI_ISL_437271, EPI_ISL_437272, EPI_ISL_437273, EPI_ISL_437275, EPI_ISL_437276, EPI_ISL_437277, EPI_ISL_437278, EPI_ISL_437279, EPI_ISL_437280, EPI_ISL_437283, EPI_ISL_437284, EPI_ISL_437287, EPI_ISL_437288, EPI_ISL_437289, EPI_ISL_437290, EPI_ISL_437291, EPI_ISL_437292, EPI_ISL_437293, EPI_ISL_437295, EPI_ISL_437296, EPI_ISL_437297, EPI_ISL_451936, EPI_ISL_451938, EPI_ISL_451939, EPI_ISL_451940, EPI_ISL_451941, EPI_ISL_451942, EPI_ISL_451943, EPI_ISL_451944, EPI_ISL_451945, EPI_ISL_451947, EPI_ISL_466876, EPI_ISL_466877, EPI_ISL_466878, EPI_ISL_466879, EPI_ISL_466880, EPI_ISL_466881, EPI_ISL_466883, EPI_ISL_466886, EPI_ISL_466888, EPI_ISL_466889, EPI_ISL_466890, EPI_ISL_466891, EPI_ISL_466892, EPI_ISL_466893, EPI_ISL_466895, EPI_ISL_466896, EPI_ISL_466897, EPI_ISL_466901, EPI_ISL_466902, EPI_ISL_466903, EPI_ISL_466904, EPI_ISL_466907, EPI_ISL_466874, EPI_ISL_466918, EPI_ISL_466909, EPI_ISL_466917, EPI_ISL_466916, EPI_ISL_466922		
Max von Pettenkofer Institute, Virology, National Reference Center for Retroviruses, LMU Munich	Laboratory for Functional Genome Analysis, Dept. Genomics, Gene Center of the LMU Munich	Max Muenchh off et al
EPI_ISL_420899, EPI_ISL_420900, EPI_ISL_420901, EPI_ISL_420902, EPI_ISL_420904, EPI_ISL_420905, EPI_ISL_420906, EPI_ISL_420907, EPI_ISL_420908, EPI_ISL_420909, EPI_ISL_420911, EPI_ISL_420898		
Mayo Clinic & Mayo Clinic Laboratories	Minnesota Department of Health, Public Health Laboratory	Matt Plumb et al
EPI_ISL_518881, EPI_ISL_539847		
Mayo Clinic Laboratories	University of Washington Virology Lab	Pavitra Roychou dhury et al

EPI_ISL_500510		
MD PHL	MD PHL	Maryland Department of Health Laboratories Administration et al
EPI_ISL_534702, EPI_ISL_524882, EPI_ISL_534704		
Medical Diagnostics Services (MDS)	KRISP, KZN Research Innovation and Sequencing Platform	Giandhari J et al
EPI_ISL_495537, EPI_ISL_515839		
Medical Microbiology Unit, Department for Laboratory Medicine, Drammen Hospital, Vestre Viken Health Trust,	Norwegian Institute of Public Health, Department of Virology	Kathrine Stene-Johansen et al
EPI_ISL_549166		
MEPHI, Aix Marseille University	MEPHI, Aix Marseille University	Anthony LEVASSEUR et al
EPI_ISL_569243, EPI_ISL_569244, EPI_ISL_569246, EPI_ISL_569247, EPI_ISL_569249, EPI_ISL_569250, EPI_ISL_569252, EPI_ISL_569258, EPI_ISL_569259, EPI_ISL_569260, EPI_ISL_569261, EPI_ISL_569262, EPI_ISL_569264, EPI_ISL_569266, EPI_ISL_569271, EPI_ISL_569273, EPI_ISL_569274, EPI_ISL_569275, EPI_ISL_569278, EPI_ISL_569280, EPI_ISL_569282, EPI_ISL_569287, EPI_ISL_569290, EPI_ISL_569294, EPI_ISL_569295, EPI_ISL_569296, EPI_ISL_569298, EPI_ISL_569301, EPI_ISL_569304, EPI_ISL_569305, EPI_ISL_569309, EPI_ISL_569311, EPI_ISL_569314, EPI_ISL_569316, EPI_ISL_569324, EPI_ISL_569325, EPI_ISL_569326, EPI_ISL_569329, EPI_ISL_569331, EPI_ISL_569333, EPI_ISL_569334, EPI_ISL_569335, EPI_ISL_569336, EPI_ISL_569338, EPI_ISL_569341, EPI_ISL_569343, EPI_ISL_569346, EPI_ISL_569348, EPI_ISL_569349, EPI_ISL_569350, EPI_ISL_569351, EPI_ISL_569352, EPI_ISL_569354, EPI_ISL_569355, EPI_ISL_569357, EPI_ISL_569359, EPI_ISL_569360, EPI_ISL_569362, EPI_ISL_569363, EPI_ISL_569365, EPI_ISL_569366, EPI_ISL_569371, EPI_ISL_569374, EPI_ISL_569378, EPI_ISL_569379, EPI_ISL_569380, EPI_ISL_569381, EPI_ISL_569383, EPI_ISL_569384, EPI_ISL_569387, EPI_ISL_569388, EPI_ISL_569390, EPI_ISL_569392, EPI_ISL_569393, EPI_ISL_569394, EPI_ISL_569396, EPI_ISL_569397, EPI_ISL_569398, EPI_ISL_569399, EPI_ISL_569400, EPI_ISL_569401, EPI_ISL_569402, EPI_ISL_569404, EPI_ISL_569405, EPI_ISL_569406, EPI_ISL_569407, EPI_ISL_569408, EPI_ISL_569409, EPI_ISL_569411, EPI_ISL_569412, EPI_ISL_569413, EPI_ISL_569414, EPI_ISL_569415, EPI_ISL_569416, EPI_ISL_569417, EPI_ISL_569419, EPI_ISL_569420, EPI_ISL_569421, EPI_ISL_569422, EPI_ISL_569423,		

<p>EPI_ISL_569002, EPI_ISL_569003, EPI_ISL_569004, EPI_ISL_569005, EPI_ISL_569006, EPI_ISL_569007, EPI_ISL_569008, EPI_ISL_569009, EPI_ISL_569010, EPI_ISL_569011, EPI_ISL_569012, EPI_ISL_569013, EPI_ISL_569014, EPI_ISL_569015, EPI_ISL_569016, EPI_ISL_569017, EPI_ISL_569018, EPI_ISL_569019, EPI_ISL_569020, EPI_ISL_569021, EPI_ISL_569022, EPI_ISL_569023, EPI_ISL_569024, EPI_ISL_569025, EPI_ISL_569026, EPI_ISL_569027, EPI_ISL_569028, EPI_ISL_569029, EPI_ISL_569030, EPI_ISL_569031, EPI_ISL_569033, EPI_ISL_569034, EPI_ISL_569035, EPI_ISL_569036, EPI_ISL_569037, EPI_ISL_569038, EPI_ISL_569039, EPI_ISL_569040, EPI_ISL_569042, EPI_ISL_569043, EPI_ISL_569044, EPI_ISL_569045, EPI_ISL_569047, EPI_ISL_569048, EPI_ISL_569049, EPI_ISL_569051, EPI_ISL_569052, EPI_ISL_569053, EPI_ISL_569054, EPI_ISL_569055, EPI_ISL_569057, EPI_ISL_569058, EPI_ISL_569059, EPI_ISL_569060, EPI_ISL_569061, EPI_ISL_569062, EPI_ISL_569063, EPI_ISL_569064, EPI_ISL_569065, EPI_ISL_569068, EPI_ISL_569069, EPI_ISL_569070, EPI_ISL_569072, EPI_ISL_569074, EPI_ISL_569075, EPI_ISL_569076, EPI_ISL_569077, EPI_ISL_569078, EPI_ISL_569079, EPI_ISL_569080, EPI_ISL_569081, EPI_ISL_569082, EPI_ISL_569083, EPI_ISL_569086, EPI_ISL_569087, EPI_ISL_569089, EPI_ISL_569091, EPI_ISL_569092, EPI_ISL_569095, EPI_ISL_569098, EPI_ISL_569099, EPI_ISL_569100, EPI_ISL_569101, EPI_ISL_569102, EPI_ISL_569105, EPI_ISL_569106, EPI_ISL_569107, EPI_ISL_569108, EPI_ISL_569110, EPI_ISL_569111, EPI_ISL_569113, EPI_ISL_569114, EPI_ISL_569115, EPI_ISL_569116, EPI_ISL_569117, EPI_ISL_569118, EPI_ISL_569122, EPI_ISL_569123, EPI_ISL_569124, EPI_ISL_569125, EPI_ISL_569126, EPI_ISL_569127, EPI_ISL_569133, EPI_ISL_569134, EPI_ISL_569135, EPI_ISL_569137, EPI_ISL_569138, EPI_ISL_569139, EPI_ISL_569140, EPI_ISL_569141, EPI_ISL_569142, EPI_ISL_569143, EPI_ISL_569144, EPI_ISL_569145, EPI_ISL_569146, EPI_ISL_569147, EPI_ISL_569148, EPI_ISL_569150, EPI_ISL_569151, EPI_ISL_569152, EPI_ISL_569153, EPI_ISL_569154, EPI_ISL_569156, EPI_ISL_569158, EPI_ISL_569159, EPI_ISL_569162, EPI_ISL_569163, EPI_ISL_569164, EPI_ISL_569165, EPI_ISL_569166, EPI_ISL_569167, EPI_ISL_569168, EPI_ISL_569169, EPI_ISL_569170, EPI_ISL_569171, EPI_ISL_569172, EPI_ISL_569173, EPI_ISL_569174, EPI_ISL_569176, EPI_ISL_569177, EPI_ISL_569178, EPI_ISL_569179, EPI_ISL_569180, EPI_ISL_569181, EPI_ISL_569182, EPI_ISL_569183, EPI_ISL_569184, EPI_ISL_569185, EPI_ISL_569186, EPI_ISL_569188, EPI_ISL_569189, EPI_ISL_569190, EPI_ISL_569191, EPI_ISL_569192, EPI_ISL_569193, EPI_ISL_569195, EPI_ISL_569196</p>		
MHC West-Brabant	Erasmus Medical Center	David Nieuwenhuijse et al
EPI_ISL_413574		
Michigan Department of Health and Human Services, Bureau of Laboratories	Michigan Department of Health and Human Services, Bureau of Laboratories	Blankenship HM et al
<p>EPI_ISL_436819, EPI_ISL_447178, EPI_ISL_450593, EPI_ISL_460009, EPI_ISL_507428, EPI_ISL_507557, EPI_ISL_507651, EPI_ISL_516197, EPI_ISL_516204, EPI_ISL_516382,</p>		

EPI_ISL_516395, EPI_ISL_529890, EPI_ISL_529891, EPI_ISL_529901, EPI_ISL_565844, EPI_ISL_565850, EPI_ISL_565987, EPI_ISL_566005		
Microbiological Diagnostic Unit Public Health Laboratory	Microbiological Diagnostic Unit Public Health Laboratory	Seemann T. et al
EPI_ISL_430644		
Microbiology Division, Barzilai University Medical Center	Stern Lab	Stern Lab et al
EPI_ISL_447294		
Microbiology Division, South Carolina Department of Health and Environmental Control	Microbiology Division, South Carolina Department of Health and Environmental Control	Flores et al
EPI_ISL_541665		
Microbiology, Virology and Biemergency Laboratory-ASST FBF Sacco	Microbiology, Virology and Biemergency Laboratory-ASST FBF Sacco	Mancon A et al
EPI_ISL_486647, EPI_ISL_486651, EPI_ISL_486655, EPI_ISL_486646, EPI_ISL_486662		
Microbiology, Virology and Biemergency Laboratory-ASST FBF Sacco	Microbiology, Virology and Biemergency Laboratory-ASST FBF Sacco	Micheli V et al
EPI_ISL_486652		
Microbiology, Virology and Biemergency Laboratory-ASST FBF Sacco	Microbiology, Virology and Biemergency Laboratory-ASST FBF Sacco	Rimoldi SG et al
EPI_ISL_486653, EPI_ISL_486664		
Microbiology, Virology and Biemergency Laboratory-ASST FBF Sacco	Microbiology, Virology and Biemergency Laboratory-ASST FBF Sacco	Romeri F et al
EPI_ISL_486650, EPI_ISL_486658		
Ministry of Health Turkey	Ministry of Health Turkey	Fatma Bayrakdar et al
EPI_ISL_437315		
Minnesota Department of Health, Public Health Laboratory	Minnesota Department of Health, Public Health Laboratory	Matt Plumb et al
EPI_ISL_482998, EPI_ISL_507976, EPI_ISL_527587, EPI_ISL_527615, EPI_ISL_527620, EPI_ISL_450768, EPI_ISL_414589, EPI_ISL_417479, EPI_ISL_417502		
Mohammed Bin Rashid University of Medicine and Health Sciences	Al Jalila Genomics Center	Ahmad Abou

		Tayoun et al
EPI_ISL_520678		
Molecular diagnostic laboratory of Federal Budget Institution of Science "Central Research Institute of Epidemiology" of The Federal Service on Customers' Rights Protection and Human Well-being Surveillance	Group of Genomics and Postgenomic Technologies of Central Research Institute of Epidemiology	Speranskaya AS et al
EPI_ISL_534343		
Molecular Virology Unit, Fondazione IRCCS Policlinico San Matteo , Pavia	Laboratory of Virology, INMI Lazzaro Spallanzani IRCCS	Antonio Piralla et al
EPI_ISL_451308, EPI_ISL_451306		
Molecular Virology Unit, Fondazione IRCCS Policlinico San Matteo , Pavia	Laboratory of Virology, INMI Lazzaro Spallanzani IRCCS	Fausto Baldanti et al
EPI_ISL_460081		
Molecular Virology Unit, Fondazione IRCCS Policlinico San Matteo , Pavia	Laboratory of Virology, INMI Lazzaro Spallanzani IRCCS	Maria R. Capobianchi et al
EPI_ISL_460086		
Molecular Virology Unit, Fondazione IRCCS Policlinico San Matteo , Pavia	Laboratory of Virology, INMI Lazzaro Spallanzani IRCCS	Martina Rueca et al
EPI_ISL_460082		
Motol University Hospital	Institute of Applied Biotechnologies a.s.	Petr Brož et al
EPI_ISL_426893		
MSHS Clinical Microbiology Laboratories	MSHS Pathogen Surveillance Program	Ana S. Gonzalez-Reiche et al
EPI_ISL_421352, EPI_ISL_450025, EPI_ISL_450055		
München Klinik Schwabing	MGZ Medical Genetics Center	Dieter A. Wolf et al
EPI_ISL_490205, EPI_ISL_490206, EPI_ISL_490207		
National Centre For Cell Science	National Centre For Cell Science	Dhiraj Paul et al
EPI_ISL_496562, EPI_ISL_496566		

National Centre for Disease control (NCDC)	NCDC/CSIR-IGIB	Pramod Kumar# et al
EPI_ISL_436453, EPI_ISL_436463		
National Institute for Communicable Disease Control and Prevention (ICDC) Chinese Center for Disease Control and Prevention (China CDC)	National Institute for Communicable Disease Control and Prevention (ICDC) Chinese Center for Disease Control and Prevention (China CDC)	Zhang et al
EPI_ISL_402125		
National Institute for Communicable Diseases of the National Health Laboratory Service	National Institute for Communicable Diseases of the National Health Laboratory Service	Allam M et al
EPI_ISL_515156, EPI_ISL_490275		
National Institute of Virology, NIV Influenza	National Institute of Virology, NIV Influenza	Potdar V et al
EPI_ISL_541699		
National Public Health Laboratory, National Centre for Infectious Diseases	National Public Health Laboratory, National Centre for Infectious Diseases	Mak TM et al
EPI_ISL_462369, EPI_ISL_469147, EPI_ISL_483607, EPI_ISL_498579		
National Public Health Laboratory, National Centre for Infectious Diseases	National Public Health Laboratory, National Centre for Infectious Diseases	Mak Tze Minn et al
EPI_ISL_443208		
National Virus Reference Laboratory	National Virus Reference Laboratory	Michael Carr et al
EPI_ISL_528462		
National Virus Resource Center, Chinese Academy of Sciences, Wuhan 430071, China	Computational Virology Group, Center for Bacteria and Viruses Resources and Bioinformation, Wuhan Institute of Virology, Chinese Academy of Sciences, Wuhan 430071, China	Jianjun Chen et al
EPI_ISL_493177		
Naval Health Research Center	Naval Medical Research Center Biological Defense Research Directorate	Logan Voegtly et al
EPI_ISL_444999		
Nevada State Public Health Laboratory	Nevada State Public Health Laboratory	Richard Tillett et al
EPI_ISL_515297, EPI_ISL_515320, EPI_ISL_515384		

New Mexico Department of Health Scientific Laboratory	New Mexico Department of Health Scientific Laboratory	Ellie Johnson et al
EPI_ISL_535300, EPI_ISL_535303, EPI_ISL_542025, EPI_ISL_542032, EPI_ISL_542059		
New Mexico Department of Health Scientific Laboratory Division	Center for Global Health, University of New Mexico Health Sciences Center	Daryl Domman et al
EPI_ISL_508108		
NewYork-Presbyterian & Mason Lab	Mason Lab	Daniel J. Butler et al
EPI_ISL_427576, EPI_ISL_427581, EPI_ISL_427584, EPI_ISL_427600		
NHSGGC West of Scotland Specialist Virology Centre / MRC-University of Glasgow Centre for Virus Research	Wellcome Sanger Institute for the COVID-19 Genomics UK Consortium	Ana da Silva Filipe et al
EPI_ISL_459548, EPI_ISL_532932, EPI_ISL_532563, EPI_ISL_531982, EPI_ISL_530959, EPI_ISL_534660, EPI_ISL_534549, EPI_ISL_534583, EPI_ISL_530488, EPI_ISL_534493		
NIV Influenza	NIV Influenza	Potdar V et al
EPI_ISL_452208		
Norra Alvsborgs länssjukhus	The Public Health Agency of Sweden	Anna-Malin Linde et al
EPI_ISL_534240		
North West London Pathology, Imperial College Healthcare NHS Trust	Wellcome Sanger Institute for the COVID-19 Genomics UK Consortium	Ling Li et al
EPI_ISL_516867, EPI_ISL_524705, EPI_ISL_524630, EPI_ISL_524711		
Northumbria University / South Tees Hospitals NHS Foundation Trust / North Cumbria Integrated Care NHS Foundation Trust / North Tees and Hartlepool NHS Foundation Trust / Newcastle Hospitals NHS Foundation Trust	COVID-19 Genomics UK (COG-UK) Consortium	Darren L Smith et al

EPI_ISL_472172, EPI_ISL_472190, EPI_ISL_472251, EPI_ISL_478587, EPI_ISL_484327		
NRL for Influenza, Centrum Epidemiology and Microbiology of National Institute of Public Health, Czech Republic	Charite Universitaetsmedizin Berlin, Institute of Virology	Victor M Corman et al
EPI_ISL_416743		
NU-OMICS DNA Sequencing research facility, Northumbria University	Wellcome Sanger Institute for the COVID-19 Genomics UK Consortium	Chris Duncan et al
EPI_ISL_488817, EPI_ISL_488807, EPI_ISL_488748, EPI_ISL_488806, EPI_ISL_488747, EPI_ISL_488759, EPI_ISL_488687, EPI_ISL_488601, EPI_ISL_488627, EPI_ISL_488587, EPI_ISL_488820, EPI_ISL_458678, EPI_ISL_488727, EPI_ISL_488721, EPI_ISL_488141, EPI_ISL_488172		
NYU Langone Health	Department of Pathology and Medicine, New York University School of Medicine	Margaret Black et al
EPI_ISL_418200		
NYU Langone Health	Department of Pathology and Medicine, New York University School of Medicine	Maria Aguero- Rosenfel d et al
EPI_ISL_418969		
NYU Langone Health	Departments of Pathology and Medicine, New York University School of Medicine	Maria Aguero- Rosenfel d et al
EPI_ISL_428786, EPI_ISL_430377, EPI_ISL_419697, EPI_ISL_444784, EPI_ISL_420584, EPI_ISL_450398, EPI_ISL_451404, EPI_ISL_451469, EPI_ISL_456056, EPI_ISL_421591, EPI_ISL_467420		
OHSU Lab Services Molecular Microbiology Lab	Oregon SARS-CoV-2 Genome Sequencing Center	Brendan L. O'Connell et al
EPI_ISL_525957, EPI_ISL_525963, EPI_ISL_509147, EPI_ISL_509159, EPI_ISL_509177, EPI_ISL_509192, EPI_ISL_509211, EPI_ISL_526038, EPI_ISL_526045, EPI_ISL_526079		
Oman-NIC	Department of Microbiology and Immunology-SQUH	Fahad Zadjali et al
EPI_ISL_491986		

Oman-NIC	Oman-NIC	Samira Al-Maruqi et al
EPI_ISL_457977		
Omsk Research Institute of Natural Focal Infections	WHO National Influenza Centre Russian Federation	Artem Fadeev et al
EPI_ISL_569836, EPI_ISL_569804, EPI_ISL_569809, EPI_ISL_569851, EPI_ISL_569801, EPI_ISL_569794, EPI_ISL_569843		
Omtanken Grimmered	The Public Health Agency of Sweden	Oskar Karlsson Lindsjo et al
EPI_ISL_475535		
Orange County Public Health Laboratory	Chan-Zuckerberg Biohub	CZB Cliahub Consortium et al
EPI_ISL_548291, EPI_ISL_548416, EPI_ISL_548465, EPI_ISL_548592, EPI_ISL_548677, EPI_ISL_548601		
Orebro klinisk mikrobiologi	The Public Health Agency of Sweden	Oskar Karlsson Lindsjo et al
EPI_ISL_475135		
Originating lab: Wales Specialist Virology Centre Sequencing lab: Pathogen Genomics Unit	COVID-19 Genomics UK (COG-UK) Consortium	Catherine Moore et al
EPI_ISL_494277, EPI_ISL_474230, EPI_ISL_474291		
Osmania Medical College	CSIR-Centre for Cellular and Molecular Biology	Shashikala Reddy et al
EPI_ISL_458066		
Ospedale "Giuseppe Mazzini"-Teramo	Istituto Zooprofilattico Sperimentale dell'Abruzzo e Molise "G.Caporale"	Lorusso A et al
EPI_ISL_529018, EPI_ISL_528922, EPI_ISL_528924, EPI_ISL_528926, EPI_ISL_528927, EPI_ISL_528928		
Ospedale "Ss. Annunziata"	Istituto Zooprofilattico Sperimentale dell'Abruzzo e Molise "G.Caporale"	Lorusso A et al
EPI_ISL_529022, EPI_ISL_529014, EPI_ISL_529015		

Ospedale "San Liberatore" di Atri	Istituto Zooprofilattico Sperimentale dell'Abruzzo e Molise "G. Caporale"	Lorusso A et al
EPI_ISL_418256		
Ospedale Civile Castel Di Sangro	Istituto Zooprofilattico Sperimentale dell'Abruzzo e Molise "G.Caporale"	Lorusso A et al
EPI_ISL_420564		
Ospedale Civile Giuseppe Mazzini	Istituto Zooprofilattico Sperimentale dell'Abruzzo e Molise "G. Caporale"	Lorusso A et al
EPI_ISL_418260, EPI_ISL_418261, EPI_ISL_429228, EPI_ISL_429231, EPI_ISL_429233, EPI_ISL_429234, EPI_ISL_429235		
Ospedale Civile Giuseppe Mazzini	Istituto Zooprofilattico Sperimentale dell'Abruzzo e Molise "G.Caporale"	Lorusso A et al
EPI_ISL_420568, EPI_ISL_420565		
Ospedale Civile Giuseppe Mazzini, Teramo	Istituto Zooprofilattico Sperimentale dell'Abruzzo e Molise "G.Caporale"	Lorusso A et al
EPI_ISL_418257		
Ospedale Civile Maria SS. dello Splendore	Istituto Zooprofilattico Sperimentale dell'Abruzzo e Molise "G.Caporale"	Lorusso A et al
EPI_ISL_528990		
Ospedale Civile S. Liberatore di Atri	Istituto Zooprofilattico Sperimentale dell'Abruzzo e Molise "G.Caporale"	Lorusso A et al
EPI_ISL_436731, EPI_ISL_436732, EPI_ISL_436719, EPI_ISL_436720, EPI_ISL_436722, EPI_ISL_436724		
Ospedale Civile S. Liberatore-Atri	Istituto Zooprofilattico Sperimentale dell'Abruzzo e Molise "G.Caporale"	Lorusso A et al
EPI_ISL_529020, EPI_ISL_529021, EPI_ISL_528929, EPI_ISL_529009		
Ospedale Regionale San Salvatore	Istituto Zooprofilattico Sperimentale dell'Abruzzo e Molise "G. Caporale"	Lorusso A et al
EPI_ISL_429229		
Ospedale Regionale San Salvatore	Istituto Zooprofilattico Sperimentale dell'Abruzzo e Molise "G.Caporale"	Lorusso A et al
EPI_ISL_420567		
Ospedale SS Annunziata	Istituto Zooprofilattico Sperimentale dell'Abruzzo e Molise "G.Caporale"	Lorusso A et al
EPI_ISL_435150, EPI_ISL_435151, EPI_ISL_435148		
Ospedale SS Annunziata-Sulmona	Istituto Zooprofilattico Sperimentale dell'Abruzzo e Molise "G.Caporale"	Lorusso A et al
EPI_ISL_528991, EPI_ISL_529016, EPI_ISL_528992		

Ostfold Hospital Trust - Kalnes, Centre for Laboratory Medicine, Section for gene technology and infection serology	Norwegian Institute of Public Health, Department of Virology	Kathrine Stene-Johansen et al
EPI_ISL_549117, EPI_ISL_549118		
Oxford Viromics, NDM, University of Oxford; Oxford University Hospitals; Basingstoke and North Hampshire Hospital	COVID-19 Genomics UK (COG-UK) Consortium	Tanya Golubchik et al
EPI_ISL_478823, EPI_ISL_478850, EPI_ISL_478865, EPI_ISL_479038, EPI_ISL_479119, EPI_ISL_479144, EPI_ISL_534773, EPI_ISL_534795, EPI_ISL_534808, EPI_ISL_534830, EPI_ISL_534938, EPI_ISL_549345, EPI_ISL_559754, EPI_ISL_559757, EPI_ISL_559782, EPI_ISL_559990		
Parc des Dames	National Reference Center for Viruses of Respiratory Infections, Institut Pasteur, Paris	Mélanie Albert et al
EPI_ISL_421502		
Pathogen Genomics Lab King Abdullah University of Science and Technology(KAUST)	Pathogen Genomics Lab King Abdullah University of Science and Technology(KAUST)	Afrah Alsomali et al
EPI_ISL_513008		
Pathogen Genomics Lab King Abdullah University of Science and Technology(KAUST)	Pathogen Genomics Lab King Abdullah University of Science and Technology(KAUST)	Fadwa Alofi et al
EPI_ISL_512922, EPI_ISL_512923, EPI_ISL_512926		
Pathogen Genomics Lab King Abdullah University of Science and Technology(KAUST)	Pathogen Genomics Lab King Abdullah University of Science and Technology(KAUST)	Fathia Ben Rached et al
EPI_ISL_513081, EPI_ISL_513102		
Pathogen Genomics Lab King Abdullah University of Science and Technology(KAUST)	Pathogen Genomics Lab King Abdullah University of Science and Technology(KAUST)	Raece Naem et al
EPI_ISL_512880, EPI_ISL_512889, EPI_ISL_512891, EPI_ISL_512893, EPI_ISL_512894, EPI_ISL_512897, EPI_ISL_513065, EPI_ISL_513211		
Pathogen Genomics Lab King Abdullah University of Science and Technology(KAUST)	Pathogen Genomics Lab King Abdullah University of Science and Technology(KAUST)	Rahul P Salunke et al
EPI_ISL_513036, EPI_ISL_513049, EPI_ISL_513054, EPI_ISL_513198		

Pathogen Genomics Lab King Abdullah University of Science and Technology(KAUST)	Pathogen Genomics Lab King Abdullah University of Science and Technology(KAUST)	Sara Mfarrej et al
EPI_ISL_512977		
Pathogen Genomics Lab King Abdullah University of Science and Technology(KAUST)	Pathogen Genomics Lab King Abdullah University of Science and Technology(KAUST)	Sharif Hala et al
EPI_ISL_437754		
Pathology West - NSW Health Pathology	NSW Health Pathology - Institute of Clinical Pathology and Medical Research; Westmead Hospital; University of Sydney	CIDM-PH et al. et al
EPI_ISL_451577		
PHE South West Regional Laboratory, National Infection Service	Wellcome Sanger Institute for the COVID-19 Genomics UK Consortium	Stephanie Hutchings et al
EPI_ISL_440154, EPI_ISL_440269, EPI_ISL_440718, EPI_ISL_442642, EPI_ISL_492793, EPI_ISL_443884, EPI_ISL_443973, EPI_ISL_443697, EPI_ISL_443818, EPI_ISL_443913, EPI_ISL_443791, EPI_ISL_469568, EPI_ISL_458862, EPI_ISL_488435, EPI_ISL_488237, EPI_ISL_488444, EPI_ISL_488223, EPI_ISL_488349, EPI_ISL_492689, EPI_ISL_492694, EPI_ISL_492575, EPI_ISL_501588, EPI_ISL_501567, EPI_ISL_492311, EPI_ISL_495101		
Plaisance	National Reference Center for Viruses of Respiratory Infections, Institut Pasteur, Paris	Mélanie Albert et al
EPI_ISL_443308		
Presidio Ospedaliero "S. Spirito" - PESCARA	Istituto Zooprofilattico Sperimentale dell'Abruzzo e Molise "G. Caporale"	Lorusso A et al
EPI_ISL_418255		
Presidio Ospedaliero "S.Filippo e Nicola"-Avezzano	Istituto Zooprofilattico Sperimentale dell'Abruzzo e Molise "G.Caporale"	Lorusso A et al
EPI_ISL_529013		
Presidio Ospedaliero "Santo Spirito"- Pescara	Istituto Zooprofilattico Sperimentale dell'Abruzzo e Molise "G.Caporale"	Lorusso A et al
EPI_ISL_528920, EPI_ISL_528921		
Presidio Ospedaliero Santo Spirito	Istituto Zooprofilattico Sperimentale dell'Abruzzo e Molise "G. Caporale"	Lorusso A et al
EPI_ISL_429226		
Prof. Massimo Zollo CEINGE TASK-FORCE COVID19 - Regione Campania	Prof. Massimo Zollo CEINGE TASK-FORCE COVID19 - Regione Campania	Veronica Ferrucci et al
EPI_ISL_514432		

Prof. Massimo Zollo CEINGE TASK-FORCE COVID19 - Regione Campania	Prof. Massimo Zollo CEINGE TASK-FORCE COVID19 - Regione Campania	Veronica Ferrucci et al
EPI_ISL_477204		
Providence St. Joseph Health Molecular Genomics Laboratory	Providence St. Joseph Health Molecular Genomics Laboratory	Alexa K Dowdell et al
EPI_ISL_482403, EPI_ISL_482447		
Public Health Laboratory	National Microbiology Laboratory	Anna Majer et al
EPI_ISL_469239, EPI_ISL_469226, EPI_ISL_469227, EPI_ISL_469228, EPI_ISL_469229, EPI_ISL_469230, EPI_ISL_469231, EPI_ISL_469232, EPI_ISL_469233, EPI_ISL_469235, EPI_ISL_469238		
Quadram Institute Bioscience	COVID-19 Genomics UK (COG-UK) Consortium	Dave J. Baker et al
EPI_ISL_457333		
Queens Medical Centre, Clinical Microbiology Department / DeepSeq Nottingham	COVID-19 Genomics UK (COG-UK) Consortium	Gemma Clark et al
EPI_ISL_425512, EPI_ISL_425584, EPI_ISL_432928		
Quest Diagnostics	Quest Diagnostics	Rosenthal et al
EPI_ISL_571267, EPI_ISL_571181, EPI_ISL_571593, EPI_ISL_571030, EPI_ISL_571062, EPI_ISL_571118, EPI_ISL_571131, EPI_ISL_571362, EPI_ISL_571638, EPI_ISL_571760, EPI_ISL_571762, EPI_ISL_571381, EPI_ISL_571387, EPI_ISL_571395, EPI_ISL_572011, EPI_ISL_571399		
Quick Care Huron	South Dakota Public Health Laboratory	Matt Plumb et al
EPI_ISL_569615		
R. G. Lugar Center for Public Health Research, National Center for Disease Control and Public Health (NCDC) of Georgia.	R. G. Lugar Center for Public Health Research, National Center for Disease Control and Public Health (NCDC) of Georgia.	Adam Kotorashvili et al
EPI_ISL_416482		
Regional Virus Laboratory, Belfast Health and Social Care Trust	COVID-19 Genomics UK (COG-UK) Consortium	Conall McCaughy et al
EPI_ISL_453483, EPI_ISL_441381, EPI_ISL_441382, EPI_ISL_461786, EPI_ISL_441417, EPI_ISL_441425, EPI_ISL_441433		

Regional Virus Laboratory, Belfast Health and Social Care Trust	Wellcome Sanger Institute for the COVID-19 Genomics UK Consortium	Conall McCaughy et al
EPI_ISL_489196, EPI_ISL_482091, EPI_ISL_441781		
Résidence de maintenon	National Reference Center for Viruses of Respiratory Infections, Institut Pasteur, Paris	Mélanie Albert et al
EPI_ISL_420054		
Résidence Eleusis	National Reference Center for Viruses of Respiratory Infections, Institut Pasteur, Paris	Mélanie Albert et al
EPI_ISL_420051		
Résidence Esterel	National Reference Center for Viruses of Respiratory Infections, Institut Pasteur, Paris	Mélanie Albert et al
EPI_ISL_443304		
Résidence Les Marines	National Reference Center for Viruses of Respiratory Infections, Institut Pasteur, Paris	Mélanie Albert et al
EPI_ISL_443303		
Résidence Ornano	National Reference Center for Viruses of Respiratory Infections, Institut Pasteur, Paris	Mélanie Albert et al
EPI_ISL_443258, EPI_ISL_443259		
Résidence Villa Caroline	National Reference Center for Viruses of Respiratory Infections, Institut Pasteur, Paris	Mélanie Albert et al
EPI_ISL_420047		
Respiratory Virus Unit, Microbiology Services Colindale, Public Health England	Respiratory Virus Unit, Microbiology Services Colindale, Public Health England	Monica Galiano et al
EPI_ISL_414013, EPI_ISL_417233, EPI_ISL_417236, EPI_ISL_417246, EPI_ISL_417252, EPI_ISL_417255, EPI_ISL_417270, EPI_ISL_417301, EPI_ISL_417302, EPI_ISL_423900, EPI_ISL_424046, EPI_ISL_424082, EPI_ISL_424084, EPI_ISL_423784, EPI_ISL_423818, EPI_ISL_423236, EPI_ISL_420636, EPI_ISL_423298, EPI_ISL_423324, EPI_ISL_421892, EPI_ISL_420693, EPI_ISL_423358, EPI_ISL_420765, EPI_ISL_420771		
Respiratory Virus Unit, Microbiology Services Colindale, Public Health England	Respiratory Virus Unit, Microbiology Services Colindale, Public Health England	PHE Covid Sequencing Team et al

EPI_ISL_464194, EPI_ISL_464215, EPI_ISL_464362, EPI_ISL_464404, EPI_ISL_464541, EPI_ISL_464582, EPI_ISL_464655, EPI_ISL_464719, EPI_ISL_464745, EPI_ISL_464772, EPI_ISL_464802, EPI_ISL_464901, EPI_ISL_465017, EPI_ISL_465023, EPI_ISL_465058, EPI_ISL_465086, EPI_ISL_465091, EPI_ISL_465858, EPI_ISL_465937, EPI_ISL_465704, EPI_ISL_465612, EPI_ISL_465618, EPI_ISL_490224		
Robert Garry lab	Andersen lab at Scripps Research	Allison Smither et al
EPI_ISL_434520		
Robert Koch Institute, National Reference center for Influenza, Berlin, Germany	Robert Koch Institute, Bioinformatics MF1, Berlin, Germany	Marianne Wedde et al
EPI_ISL_481264, EPI_ISL_481253, EPI_ISL_481262		
Robert Koch Institute, ZBS1 Highly Pathogenic Viruses, Berlin, Germany	Robert Koch Institute, Bioinformatics MF1, Berlin, Germany	Janine Michel et al
EPI_ISL_483139, EPI_ISL_483140, EPI_ISL_483141, EPI_ISL_483143, EPI_ISL_483144, EPI_ISL_483145, EPI_ISL_483146, EPI_ISL_483147, EPI_ISL_483148, EPI_ISL_483149, EPI_ISL_483150, EPI_ISL_483151, EPI_ISL_483152, EPI_ISL_483153, EPI_ISL_483154, EPI_ISL_483155, EPI_ISL_483156, EPI_ISL_483157		
RSA San Raffaele Sulmona	Istituto Zooprofilattico Sperimentale dell'Abruzzo e Molise "G.Caporale"	Lorusso A et al
EPI_ISL_529017		
RSA/RP Villa San Giovanni - Gruppo Edos	Istituto Zooprofilattico Sperimentale dell'Abruzzo e Molise "G.Caporale"	Lorusso A et al
EPI_ISL_529019		
RSA/RP Villa San Giovanni - Gruppo Edos	Istituto Zooprofilattico Sperimentale dell'Abruzzo e Molise "G.Caporale"	Lorusso A et al
EPI_ISL_436725		
SA Pathology	SA Pathology	Lex Leong et al
EPI_ISL_468009, EPI_ISL_451092, EPI_ISL_508124		
San Diego County Public Health Laboratory	Andersen lab at Scripps Research	SEARCH Alliance San Diego with Tracy Basler et al

EPI_ISL_494456, EPI_ISL_494590		
San Joaquin County Public Health Lab	Chan-Zuckerberg Biohub	CZB Cliahub Consortium et al
EPI_ISL_486335		
San Matteo Hospital Pavia	Dep. Of Oncology and Hemato- Oncology University of Milan	Claudia Alteri et al
EPI_ISL_542278, EPI_ISL_542281, EPI_ISL_542282, EPI_ISL_542283, EPI_ISL_542284, EPI_ISL_542285, EPI_ISL_542288, EPI_ISL_542289, EPI_ISL_542292, EPI_ISL_542294, EPI_ISL_542295, EPI_ISL_542296, EPI_ISL_542297, EPI_ISL_542298, EPI_ISL_542299, EPI_ISL_542300, EPI_ISL_542301, EPI_ISL_542303, EPI_ISL_542304, EPI_ISL_542305, EPI_ISL_542306, EPI_ISL_542307, EPI_ISL_542308, EPI_ISL_542311, EPI_ISL_542312, EPI_ISL_542313, EPI_ISL_542314, EPI_ISL_542315, EPI_ISL_542316, EPI_ISL_542317, EPI_ISL_542318, EPI_ISL_542319, EPI_ISL_542321, EPI_ISL_542322, EPI_ISL_542323, EPI_ISL_542324, EPI_ISL_542325, EPI_ISL_542327, EPI_ISL_542328, EPI_ISL_542329, EPI_ISL_542330, EPI_ISL_542331, EPI_ISL_542333, EPI_ISL_542335, EPI_ISL_542336, EPI_ISL_542337, EPI_ISL_542338, EPI_ISL_542340, EPI_ISL_542341, EPI_ISL_542342, EPI_ISL_542343, EPI_ISL_542344, EPI_ISL_542345, EPI_ISL_542346, EPI_ISL_542347, EPI_ISL_542348, EPI_ISL_542352, EPI_ISL_542353, EPI_ISL_542354, EPI_ISL_542356, EPI_ISL_542357, EPI_ISL_542359, EPI_ISL_542362, EPI_ISL_542363, EPI_ISL_542364, EPI_ISL_542365, EPI_ISL_542372, EPI_ISL_542376, EPI_ISL_542378, EPI_ISL_542379, EPI_ISL_542380, EPI_ISL_542381, EPI_ISL_542382, EPI_ISL_542385, EPI_ISL_542387, EPI_ISL_542388, EPI_ISL_542389, EPI_ISL_542391, EPI_ISL_542394, EPI_ISL_542398		
Santa Casa de Misericórdia de Araçatuba	Instituto Adolfo Lutz, Interdisciplinary Procedures Center, Strategic Laboratory	Claudio Tavares Sacchi et al
EPI_ISL_547579		
Scripps Medical Laboratory	Andersen lab at Scripps Research	SEARCH Alliance San Diego with Michael Quigley et al
EPI_ISL_494599, EPI_ISL_494614		
SD Urban Indian Health Pierre	South Dakota Public Health Laboratory	Matt Plumb et al
EPI_ISL_569617		

Seattle Flu Study	Seattle Flu Study	Chu et al et al
EPI_ISL_430128		
Seattle Flu Study	Seattle Flu Study	Deborah A. Nickerson et al
EPI_ISL_525709, EPI_ISL_525741, EPI_ISL_530134, EPI_ISL_530162		
Sentinelles network	National Reference Center for Viruses of Respiratory Infections, Institut Pasteur, Paris	Mélanie Albert et al
EPI_ISL_421514		
Service de Biologie clinique	National Reference Center for Viruses of Respiratory Infections, Institut Pasteur, Paris	Mélanie Albert et al
EPI_ISL_420042, EPI_ISL_421513		
Service de Biologie Médicale - BP 125	National Reference Center for Viruses of Respiratory Infections, Institut Pasteur, Paris	Mélanie Albert et al
EPI_ISL_421501, EPI_ISL_420058, EPI_ISL_420060, EPI_ISL_420062, EPI_ISL_420064, EPI_ISL_421506, EPI_ISL_421512, EPI_ISL_428347		
Service de Virologie Hôpital Saint-Louis	Laboratory Cell Biology of Viral Infection-INSERM unit 944	Laurent Meertens et al
EPI_ISL_469283		
Service de Virologie Hôpital Saint-Louis	Laboratory of Cell Biology of viral infection, Unit INSERM-U944	Laurent Meertens et al
EPI_ISL_469282		
Servicio de Microbiología y Parasitología clínica. UCEIMP. Hospital Universitario Virgen del Rocío/IBIS/CSIC/US.	SeqCOVID-SPAIN consortium/IBV(CSIC)	Guillerm o Martín Gutiérrez et al
EPI_ISL_452556		
Servicio de Microbiología, Hospital Universitario Son Espases	SeqCOVID-SPAIN consortium/IBV(CSIC)	Carla López- Causapé et al
EPI_ISL_469001, EPI_ISL_468969, EPI_ISL_541965		

Servicio de Microbiología. Consorcio Hospital General Universitario de Valencia	Sequencing and Bioinformatics Service and Molecular Epidemiology Research Group. FISABIO-Public Health	Griselda De Marco et al
EPI_ISL_420114		
Servicio de Microbiología. Hospital Clínico Universitario de Valencia	Sequencing and Bioinformatics Service and Molecular Epidemiology Research Group. FISABIO-Public Health	David Navarro et al
EPI_ISL_420130		
Servicio de Microbiología. Hospital Clínico Universitario de Valencia	Sequencing and Bioinformatics Service and Molecular Epidemiology Research Group. FISABIO-Public Health	Inma Galán Vendrell et al
EPI_ISL_447531		
Servicio de Microbiología. Hospital Clínico Universitario de Valencia	Sequencing and Bioinformatics Service and Molecular Epidemiology Research Group. FISABIO-Public Health	Marta Pla Diaz et al
EPI_ISL_436316, EPI_ISL_436322		
Servicio de Microbiología. Hospital Clínico Universitario de Valencia	Sequencing and Bioinformatics Service and Molecular Epidemiology Research Group. FISABIO-Public Health	Vicente Soriano Chirona et al
EPI_ISL_436289		
Servicio de Microbiología. Hospital General Universitario de Castellón	SeqCOVID-SPAIN consortium/IBV(CSIC)	Rosario Moreno et al
EPI_ISL_537958, EPI_ISL_537960, EPI_ISL_538637, EPI_ISL_538651		
Servicio de Microbiología. Hospital Universitario Doctor Peset	Sequencing and Bioinformatics Service and Molecular Epidemiology Research Group. FISABIO-Public Health	Juan Alberola Enguádanos et al
EPI_ISL_436251, EPI_ISL_436269		
Servicio de Microbiología. Hospital Universitario Donostia. OSI Donostialdea. Área de Enfermedades Infecciosas, Grupo de Infección Respiratoria y Resistencia Antimicrobiana. Instituto de Investigación Sanitaria Biodonostia	SeqCOVID-SPAIN consortium/Institute of Biomedicine of Valencia, IBV-CSIC	Gustavo Cilla et al
EPI_ISL_541103, EPI_ISL_541115, EPI_ISL_541119, EPI_ISL_541130, EPI_ISL_541131, EPI_ISL_541132, EPI_ISL_541133, EPI_ISL_541134, EPI_ISL_541135, EPI_ISL_541136, EPI_ISL_541137		

Servicio de Microbiología. HRU de Málaga. Servicio Andaluz de Salud	SeqCOVID-SPAIN consortium/IBV(CSIC)	Inmaculada de Toro Peinado et al
EPI_ISL_452405, EPI_ISL_565911		
SERVIZIO DI IGIENE E SANITÀ PUBBLICA ASL Teramo	Istituto Zooprofilattico Sperimentale dell'Abruzzo e Molise "G.Caporale"	Lorusso A et al
EPI_ISL_435149, EPI_ISL_435154, EPI_ISL_435155, EPI_ISL_435153, EPI_ISL_436726, EPI_ISL_436727, EPI_ISL_436728, EPI_ISL_436729		
Servizio di igiene epidemiologia e sanità pubblica (SIESP)-Chieti	Istituto Zooprofilattico Sperimentale dell'Abruzzo e Molise "G.Caporale"	Lorusso A et al
EPI_ISL_528994, EPI_ISL_529023, EPI_ISL_529024, EPI_ISL_528995, EPI_ISL_528996, EPI_ISL_528997, EPI_ISL_528998, EPI_ISL_528999, EPI_ISL_529000, EPI_ISL_529001, EPI_ISL_529002, EPI_ISL_529003, EPI_ISL_529025, EPI_ISL_529004, EPI_ISL_529005		
Servizio di Igiene, Epidemiologia e Sanità Pubblica (SIESP) Avezzano	Istituto Zooprofilattico Sperimentale dell'Abruzzo e Molise "G.Caporale"	Lorusso A et al
EPI_ISL_435152		
Servizio Igiene Epidemiologia e Sanità Pubblica (SIESP)-L'Aquila	Istituto Zooprofilattico Sperimentale dell'Abruzzo e Molise "G.Caporale"	Lorusso A et al
EPI_ISL_529010, EPI_ISL_529011, EPI_ISL_529012		
Shanghai Public Health Clinical Center, Shanghai Medical College, Fudan University	National Research Center for Translational Medicine (Shanghai), Ruijin Hospital affiliated to Shanghai Jiao Tong University School of Medicine & Shanghai Public Health Clinical Center	Shengyue Wang et al
EPI_ISL_416347, EPI_ISL_416355, EPI_ISL_416405		
Skanes universitetssjukhus Lund	The Public Health Agency of Sweden	Anna-Malin Linde et al
EPI_ISL_560980		
Skovde/Unilabs	The Public Health Agency of Sweden	Anna-Malin Linde et al
EPI_ISL_455844, EPI_ISL_548246		
St.Olavs hospital/NTNU	Institute of Genomics Core Facility, University of Tartu	Aleksandr Ianevski et al

EPI_ISL_450351, EPI_ISL_450349		
Stanford clinical virology lab	Chan-Zuckerberg Biohub	Benjamin Pinsky et al
EPI_ISL_450458, EPI_ISL_476778, EPI_ISL_476782, EPI_ISL_476790		
Suceava County Emergency Hospital	Stefan cel Mare University Metagenomics Lab	Lobiuc Andrei et al
EPI_ISL_491045		
Svardsjo VC	The Public Health Agency of Sweden	Tommy Janers et al
EPI_ISL_434645		
SVO Jundiaí	Instituto Adolfo Lutz, Interdisciplinary Procedures Center, Strategic Laboratory	Claudio Tavares Sacchi et al
EPI_ISL_547575		
Texas Department of State Health Services	Texas Department of State Health Services	Jenny Zhang et al
EPI_ISL_525771		
Texas Department of State Health Services	Texas Department of State Health Services	Rashmi Tuladhar et al
EPI_ISL_522965		
The First Affiliated Hospital of Guangzhou Medical University	BGI-shenzhen & The First Affiliated Hospital of Guangzhou Medical University	et al
EPI_ISL_429080		
The First Affiliated Hospital of Guangzhou Medical University	BGI-shenzhen & The First Affiliated Hospital of Guangzhou Medical University	Yanqun Wang et al
EPI_ISL_429089		
The National Institute of Public Health	State Veterinary Institute Prague	Nagy et al
EPI_ISL_541337, EPI_ISL_545957, EPI_ISL_546936, EPI_ISL_547966, EPI_ISL_547967, EPI_ISL_547968		
The National University Hospital of Iceland	deCODE genetics	Daniel F Gudbjartsson et al

EPI_ISL_417727, EPI_ISL_417804, EPI_ISL_417837, EPI_ISL_417592, EPI_ISL_417622, EPI_ISL_424379, EPI_ISL_424442, EPI_ISL_424463, EPI_ISL_424471, EPI_ISL_417687, EPI_ISL_424572, EPI_ISL_424603		
TriCore Reference Laboratories	Center for Global Health, University of New Mexico Health Sciences Center	Daryl Domman et al
EPI_ISL_538237, EPI_ISL_542988		
TSGH-CP molecular lab	TSGH-CP molecular lab	Cherng- Lih Perng et al
EPI_ISL_436104		
TXDSHS	TXDSHS	Rashmi Tuladhar et al
EPI_ISL_560939		
UC San Diego Center for Advanced Laboratory Medicine	Andersen lab at Scripps Research	SEARCH Alliance San Diego with David Pride et al
EPI_ISL_483530, EPI_ISL_445116		
UCD National Virus Reference Laboratory	UCD National Virus Reference Laboratory	Michael Carr et al
EPI_ISL_418581, EPI_ISL_414587, EPI_ISL_418516, EPI_ISL_418584		
UCSF Clinical Microbiology Laboratory	Chan-Zuckerberg Biohub	CZB Cliahub Consortiu m et al
EPI_ISL_445177, EPI_ISL_445179, EPI_ISL_516734, EPI_ISL_516743, EPI_ISL_429050		
ULSS9 Distretto di Bussolengo	Istituto Zooprofilattico Sperimentale delle Venezie	Adelaide Milani et al
EPI_ISL_452181, EPI_ISL_522855, EPI_ISL_452184, EPI_ISL_422438, EPI_ISL_452185, EPI_ISL_452188, EPI_ISL_452189, EPI_ISL_522860, EPI_ISL_522861, EPI_ISL_522862, EPI_ISL_522863, EPI_ISL_522864, EPI_ISL_522865, EPI_ISL_522866, EPI_ISL_522867, EPI_ISL_522868		

ULSS9 Distretto di San Bonifacio	Istituto Zooprofilattico Sperimentale delle Venezie	Adelaide Milani et al
EPI_ISL_452191, EPI_ISL_522856, EPI_ISL_452190, EPI_ISL_522858		
ULSS9 Scaligera	Istituto Zooprofilattico Sperimentale delle Venezie	Adelaide Milani et al
EPI_ISL_522857, EPI_ISL_522859		
UMMC-Health	WHO National Influenza Centre Russian Federation	Andrey Komissarov et al
EPI_ISL_560317		
Universitaetsklinik für Innere Medizin II Innsbruck	Bergthaler laboratory, CeMM Research Center for Molecular Medicine of the Austrian Academy of Sciences	Alexandra Popa et al
EPI_ISL_475765, EPI_ISL_437935, EPI_ISL_437950, EPI_ISL_437952, EPI_ISL_437964, EPI_ISL_437966, EPI_ISL_437969, EPI_ISL_475936		
University College London Hospital	COVID-19 Genomics UK (COG-UK) Consortium	Judith Heaney et al
EPI_ISL_507058, EPI_ISL_507064		
University College London, Great Ormond Street Hospital for Children NHS Foundation Trust, Imperial College Healthcare NHS Trust	COVID-19 Genomics UK (COG-UK) Consortium	Sergi Castellano et al
EPI_ISL_441043, EPI_ISL_449701, EPI_ISL_478431, EPI_ISL_478437		
University College London, Great Ormond Street Hospital for Children NHS Foundation Trust, Imperial College Healthcare NHS Trust	Wellcome Sanger Institute for the COVID-19 Genomics UK Consortium	Sergi Castellano et al
EPI_ISL_487606, EPI_ISL_492498		
University Hospital Basel, Clinical Virology	University Hospital Basel, Clinical Bacteriology	Hirsch et al
EPI_ISL_418275, EPI_ISL_418277, EPI_ISL_418278, EPI_ISL_418279, EPI_ISL_418280, EPI_ISL_418281, EPI_ISL_418282, EPI_ISL_418283, EPI_ISL_418284, EPI_ISL_418433, EPI_ISL_418434, EPI_ISL_418435, EPI_ISL_418439, EPI_ISL_418438, EPI_ISL_418440		
University Hospital Basel, Clinical Virology	University Hospital Basel, Clinical Bacteriology	Madlen Stange et al

EPI_ISL_528356, EPI_ISL_528357, EPI_ISL_528358, EPI_ISL_528359, EPI_ISL_528360, EPI_ISL_528361, EPI_ISL_528362, EPI_ISL_528363, EPI_ISL_528364, EPI_ISL_528365, EPI_ISL_528366, EPI_ISL_528367, EPI_ISL_528369, EPI_ISL_528370, EPI_ISL_528371, EPI_ISL_528372, EPI_ISL_528373, EPI_ISL_528375, EPI_ISL_528376, EPI_ISL_528377, EPI_ISL_528378, EPI_ISL_528381, EPI_ISL_527937, EPI_ISL_528102, EPI_ISL_528173, EPI_ISL_528208, EPI_ISL_528159, EPI_ISL_528140		
University Hospital Basel, Clinical Virology	University Hospital Basel, Clinical Virology	Hirsch et al
EPI_ISL_418436		
University Hospital Basel, Clinical Virology	University Hospital Basel, Labormedizin	Hirsch et al
EPI_ISL_418273		
University Hospital for Infectious Diseases "Dr. Fran Mihaljević", Research Unit	University of Zagreb, Centre for research and knowledge transfer in biotechnology	Ivan-Christian Kurolt et al
EPI_ISL_454581		
University Hospital of Northern Norway, Department for Microbiology and Infectious Disease Control	Norwegian Institute of Public Health, Department of Virology	Kathrine Stene-Johansen et al
EPI_ISL_420152		
University Hospital Zurich	Department of Biosystems Science and Engineering, ETH Zürich	Christian Beisel et al
EPI_ISL_483677, EPI_ISL_483682, EPI_ISL_483685, EPI_ISL_483668, EPI_ISL_483671, EPI_ISL_483674, EPI_ISL_483678, EPI_ISL_483680, EPI_ISL_483683, EPI_ISL_483669, EPI_ISL_483672, EPI_ISL_483675, EPI_ISL_483676, EPI_ISL_483679, EPI_ISL_483681, EPI_ISL_483684, EPI_ISL_483670, EPI_ISL_483673		
University Hospital Zürich	Institute of Medical Virology, University of Zurich	Stefan Schmutz et al
EPI_ISL_524782		
University Hospital Zürich	Institute of Medical Virology, University of Zurich	Verena Kufner et al
EPI_ISL_524482		
University Hospitals of Geneva Laboratory of Virology	University Hospitals of Geneva Laboratory of Virology	Laubscher F. et al
EPI_ISL_415457, EPI_ISL_415704, EPI_ISL_415456, EPI_ISL_415701, EPI_ISL_429212, EPI_ISL_429197, EPI_ISL_415455, EPI_ISL_429218, EPI_ISL_415706, EPI_ISL_429199, EPI_ISL_429207, EPI_ISL_415700, EPI_ISL_415454, EPI_ISL_429203, EPI_ISL_429208, EPI_ISL_429201, EPI_ISL_429219, EPI_ISL_429214, EPI_ISL_429196, EPI_ISL_429209,		

EPI_ISL_429222, EPI_ISL_415705, EPI_ISL_429223, EPI_ISL_429215, EPI_ISL_415708, EPI_ISL_429206, EPI_ISL_429211, EPI_ISL_429200, EPI_ISL_429220, EPI_ISL_429221, EPI_ISL_429217, EPI_ISL_415707, EPI_ISL_429204, EPI_ISL_429213, EPI_ISL_415458, EPI_ISL_429210, EPI_ISL_415459, EPI_ISL_415698, EPI_ISL_415699, EPI_ISL_415702, EPI_ISL_415703		
University of Birmingham	COVID-19 Genomics UK (COG-UK) Consortium	Institute of Microbiology et al
EPI_ISL_526314, EPI_ISL_526321, EPI_ISL_529605, EPI_ISL_529606		
University of California, Davis	Chan-Zuckerberg Biohub	CZB Cliahub Consortium et al
EPI_ISL_548477, EPI_ISL_548374		
University of Debrecen, Department of Medical Microbiology	National Laboratory of Virology, Szentágothai Research Centre	Endre Gábor Tóth et al
EPI_ISL_476074, EPI_ISL_476075, EPI_ISL_476077		
University of Exeter	COVID-19 Genomics UK (COG-UK) Consortium	Ben Temperton et al
EPI_ISL_457081, EPI_ISL_457177, EPI_ISL_457200		
University of Liège COVID-19 testing center	GIGA Medical Genomics	Keith Durkin et al
EPI_ISL_540443, EPI_ISL_540444, EPI_ISL_540445, EPI_ISL_540446, EPI_ISL_540447, EPI_ISL_540455, EPI_ISL_540457, EPI_ISL_540462, EPI_ISL_540463, EPI_ISL_540464, EPI_ISL_540466, EPI_ISL_540467		
University of Miami Immunology and Histocompatibility Laboratory	University of Miami Immunology and Histocompatibility Laboratory	Emilio Margolis-Clark et al
EPI_ISL_513290, EPI_ISL_527385, EPI_ISL_527396		
University of Szeged, Institute of Clinical Microbiology	National Laboratory of Virology, Szentágothai Research Centre	Endre Gábor Tóth et al
EPI_ISL_477620, EPI_ISL_477622, EPI_ISL_476078		

University of Washington Virology Lab	University of Washington Virology Lab	Pavitra Roychoudhury et al
EPI_ISL_501090, EPI_ISL_501129		
University of Wisconsin-Madison AIDS Vaccine Research Laboratories	University of Wisconsin-Madison AIDS Vaccine Research Laboratories	Gage Moreno et al
EPI_ISL_516501, EPI_ISL_480365, EPI_ISL_516448, EPI_ISL_516451, EPI_ISL_516460, EPI_ISL_516478, EPI_ISL_516484, EPI_ISL_516496, EPI_ISL_425166, EPI_ISL_522907, EPI_ISL_522930, EPI_ISL_536587, EPI_ISL_536625, EPI_ISL_536626, EPI_ISL_547581, EPI_ISL_536640, EPI_ISL_428261, EPI_ISL_428304, EPI_ISL_491374, EPI_ISL_495484, EPI_ISL_495504, EPI_ISL_421341, EPI_ISL_509858, EPI_ISL_509898, EPI_ISL_509905, EPI_ISL_509912		
unknown	Department of Medicine	Kassela et al
EPI_ISL_447647		
unknown	Department of Microbiology	Gao et al
EPI_ISL_455693		
unknown	Faculty of Medicine	Rodpan et al
EPI_ISL_437623, EPI_ISL_437621		
unknown	Instituto Nacional de Saude (INSA)	Borges et al et al
EPI_ISL_453915, EPI_ISL_453944, EPI_ISL_453970, EPI_ISL_454019, EPI_ISL_454033, EPI_ISL_454039, EPI_ISL_454300, EPI_ISL_454323		
unknown	National Reference Center for Viruses of Respiratory Infections, Institut Pasteur, Paris	Mélnie Albert et al
EPI_ISL_414626		
Utah Public Health Laboratory	Utah Public Health Laboratory	Erin L. Young et al
EPI_ISL_524274		
Utah Public Health Laboratory	Utah Public Health Laboratory	Erin Young et al
EPI_ISL_430037, EPI_ISL_560892		
UW Virology Lab	UW Virology Lab	Pavitra Roychoudhury et al

EPI_ISL_477677, EPI_ISL_430945, EPI_ISL_476912, EPI_ISL_570614, EPI_ISL_427173, EPI_ISL_423031, EPI_ISL_477689, EPI_ISL_424236, EPI_ISL_424245, EPI_ISL_424310, EPI_ISL_570845, EPI_ISL_570990, EPI_ISL_570991, EPI_ISL_570993, EPI_ISL_570827, EPI_ISL_571013, EPI_ISL_570562, EPI_ISL_570630, EPI_ISL_570634, EPI_ISL_570637, EPI_ISL_570638, EPI_ISL_570642, EPI_ISL_570647, EPI_ISL_570667, EPI_ISL_570670, EPI_ISL_570748, EPI_ISL_570769, EPI_ISL_570771, EPI_ISL_491018, EPI_ISL_429652, EPI_ISL_430873, EPI_ISL_416719, EPI_ISL_418032, EPI_ISL_418033		
VI-US Virgin Islands Department of Health	Pathogen Discovery, Respiratory Viruses Branch, Division of Viral Diseases, Centers for Disease Control and Prevention	Yan Li et al
EPI_ISL_450804		
Victorian Infectious Diseases Reference Laboratory (VIDRL)	Microbiological Diagnostic Unit Public Health Laboratory and Victorian Infectious Diseases Reference Laboratory, Doherty Institute	Caly L. et al
EPI_ISL_426650, EPI_ISL_426745, EPI_ISL_426806, EPI_ISL_426821		
Victorian Infectious Diseases Reference Laboratory (VIDRL)	Microbiological Diagnostic Unit Public Health Laboratory and Victorian Infectious Diseases Reference Laboratory, The Peter Doherty Institute for Infection and Immunity	Caly L. et al
EPI_ISL_430473, EPI_ISL_430493		
Victorian Infectious Diseases Reference Laboratory (VIDRL)	Victorian Infectious Diseases Reference Laboratory and Microbiological Diagnostic Unit Public Health Laboratory, Doherty Institute	Caly L. et al
EPI_ISL_419905, EPI_ISL_419949, EPI_ISL_419950, EPI_ISL_419974, EPI_ISL_419748, EPI_ISL_419809		
Vigilância em Saúde de Cajamar	Instituto Adolfo Lutz, Interdisciplinary Procedures Center, Strategic Laboratory	Claudio Tavares Sacchi et al
EPI_ISL_547573		
Villa Serena del Dr. Leonardo Petruzzi	Istituto Zooprofilattico Sperimentale dell'Abruzzo e Molise "G.Caporale"	Lorusso A et al
EPI_ISL_435146, EPI_ISL_435147		
Viral Respiratory Lab, National Institute for Biomedical Research (INRB)	Pathogen Sequencing Lab, National Institute for Biomedical Research (INRB)	Placide Mbala-Kingebeni et al

EPI_ISL_420032, EPI_ISL_417434, EPI_ISL_417437		
Virginia DCLS	Virginia DCLS	Virginia DCLS et al
EPI_ISL_467943, EPI_ISL_485849, EPI_ISL_522823, EPI_ISL_528640, EPI_ISL_528660, EPI_ISL_529937, EPI_ISL_529946, EPI_ISL_529954, EPI_ISL_572300, EPI_ISL_572253, EPI_ISL_572221		
Virology Department, Royal Infirmary of Edinburgh, NHS Lothian	Virology Department, Royal Infirmary of Edinburgh, NHS Lothian	McHugh M et al
EPI_ISL_415640		
Virology Department, Royal Infirmary of Edinburgh, NHS Lothian / School of Biological Sciences, University of Edinburgh	Wellcome Sanger Institute for the COVID-19 Genomics UK Consortium	McHugh M et al
EPI_ISL_491569, EPI_ISL_487684, EPI_ISL_488931, EPI_ISL_488917, EPI_ISL_487876, EPI_ISL_487908		
Virology Department, Royal Infirmary of Edinburgh, NHS Lothian / School of Biological Sciences, University of Edinburgh / Institute of Genetics and Molecular Medicine, University of Edinburgh	COVID-19 Genomics UK (COG-UK) Consortium	McHugh M et al
EPI_ISL_425819, EPI_ISL_425825, EPI_ISL_425833, EPI_ISL_425839, EPI_ISL_425844, EPI_ISL_425856, EPI_ISL_425881, EPI_ISL_439144, EPI_ISL_439145, EPI_ISL_433070, EPI_ISL_433192, EPI_ISL_439213, EPI_ISL_425971, EPI_ISL_439337, EPI_ISL_425993, EPI_ISL_453106, EPI_ISL_449319, EPI_ISL_449329, EPI_ISL_439671, EPI_ISL_432868, EPI_ISL_432873		
Virology Department, Sheffield Teaching Hospitals NHS Foundation Trust	Department of Infection, Immunity and Cardiovascular Disease, The Florey Institute, The Medical School, University of Sheffield	Thushan de Silva et al
EPI_ISL_416740, EPI_ISL_420238, EPI_ISL_414500		
Virology Department, Sheffield Teaching Hospitals NHS Foundation Trust/Department of Infection, Immunity and Cardiovascular Disease, The Medical School, University of Sheffield	COVID-19 Genomics UK (COG-UK) Consortium	Thushan de Silva et al
EPI_ISL_475379, EPI_ISL_441984, EPI_ISL_453752		

Wadsworth Center, New York State Department.of Health	Wadsworth Center, New York State Department.of Health	Kirsten St. George et al
EPI_ISL_426045		
Wales Specialist Virology Centre	Public Health Wales Microbiology Cardiff	Catherine Moore et al
EPI_ISL_419438, EPI_ISL_419497, EPI_ISL_432188, EPI_ISL_431966, EPI_ISL_432302, EPI_ISL_432086, EPI_ISL_432196, EPI_ISL_445822, EPI_ISL_446692		
Wales Specialist Virology Centre Sequencing lab: Pathogen Genomics Unit	COVID-19 Genomics UK (COG-UK) Consortium	Catherine Moore et al
EPI_ISL_472442, EPI_ISL_472816, EPI_ISL_479417		
Washington State Department of Health	Seattle Flu Study	Chu et al et al
EPI_ISL_463625, EPI_ISL_430179, EPI_ISL_430294, EPI_ISL_449885, EPI_ISL_449948		
Washington State Department of Health	Seattle Flu Study	Deborah A. Nickerso n et al
EPI_ISL_495722, EPI_ISL_495994, EPI_ISL_496038, EPI_ISL_496174, EPI_ISL_497353, EPI_ISL_497471, EPI_ISL_497304		
West China Hospital of Sichuan University	State Key Laboratory of Biotherapy of Sichuan University	Baowen Du et al
EPI_ISL_451345		
West of Scotland Specialist Virology Centre, NHSGGC / MRC-University of Glasgow Centre for Virus Research	COVID-19 Genomics UK (COG-UK) Consortium	Ana da Silva Filipe et al
EPI_ISL_425647, EPI_ISL_438762, EPI_ISL_433557, EPI_ISL_425690, EPI_ISL_433658, EPI_ISL_473562, EPI_ISL_439057, EPI_ISL_529686, EPI_ISL_540781, EPI_ISL_535108, EPI_ISL_535139, EPI_ISL_425779, EPI_ISL_425790, EPI_ISL_425799, EPI_ISL_425803, EPI_ISL_425805		
WHO National Influenza Centre Russian Federation	WHO National Influenza Centre Russian Federation	Andrey Komissar ov et al
EPI_ISL_507287		

Wisconsin State Laboratory of Hygiene Communicable Disease Division	Wisconsin State Laboratory of Hygiene Communicable Disease Division	Kelsey R. Florek et al
EPI_ISL_471180		
Wuhan Chain Medical Labs (CMLabs)	State Key Laboratory of Biotherapy of Sichuan University	Baowen Du et al
EPI_ISL_454928, EPI_ISL_454956		
Wyoming Public Health Laboratory	Center for Global Health, University of New Mexico Health Sciences Center	Daryl Domman et al
EPI_ISL_462970		
Zentralinstitut für medizinische und chemische Labordiagnostik, Universitätskliniken Innsbruck	Bergthaler laboratory, CeMM Research Center for Molecular Medicine of the Austrian Academy of Sciences	Alexandr a Popa et al
EPI_ISL_475887, EPI_ISL_475899, EPI_ISL_475904, EPI_ISL_475906, EPI_ISL_475908		
ZOTZ KLIMAS MVZ Düsseldorf-Centrum GbR ÜBAG für Labormedizin, Genetik, Zytologie, Pathologie	Center of Medical Microbiology, Virology, and Hospital Hygiene, University of Duesseldorf	Maximilia n Damagne z et al
EPI_ISL_539577, EPI_ISL_539578, EPI_ISL_539579, EPI_ISL_539580, EPI_ISL_539581, EPI_ISL_539582, EPI_ISL_539583, EPI_ISL_539584, EPI_ISL_539585, EPI_ISL_539586, EPI_ISL_539587, EPI_ISL_539589, EPI_ISL_539590, EPI_ISL_539591, EPI_ISL_539592, EPI_ISL_539593, EPI_ISL_539594, EPI_ISL_539595, EPI_ISL_539596, EPI_ISL_539597, EPI_ISL_539598, EPI_ISL_539599, EPI_ISL_539600, EPI_ISL_539601, EPI_ISL_539602, EPI_ISL_539603, EPI_ISL_539604, EPI_ISL_539605, EPI_ISL_539606, EPI_ISL_539607, EPI_ISL_539608, EPI_ISL_539609, EPI_ISL_539610, EPI_ISL_539611, EPI_ISL_539612, EPI_ISL_539614, EPI_ISL_539615		