

Supplementary Material for:

Diagnostic value of cutaneous manifestation of SARS-CoV-2 infection

Alessia Visconti^{1,*}, Veronique Bataille^{1,2,*}, Niccolò Rossi¹, Justine Kluk³, Ruth Murphy⁴, Susana Puig^{5,6}, Rabi Nambi⁷, Ruth C. E. Bowyer¹, Benjamin Murray⁸, Abigail Bournot³, Jonathan Wolf³, Sebastien Ourselin⁸, Claire J. Steves¹, Tim D Spector^{1,†}, and Mario Falchi^{1,†} PhD

¹Department of Twin Research & Genetic Epidemiology, King's College London, London, UK

²Dermatology Department, West Herts NHS Trust, Herts, UK

³Zoe Global Limited, London, UK

⁴Dermatology Department, Sheffield Teaching Hospitals NHS Foundation Trust, Sheffield, UK

⁵Dermatology Department, Hospital Clinic of Barcelona, University of Barcelona, Barcelona, Spain

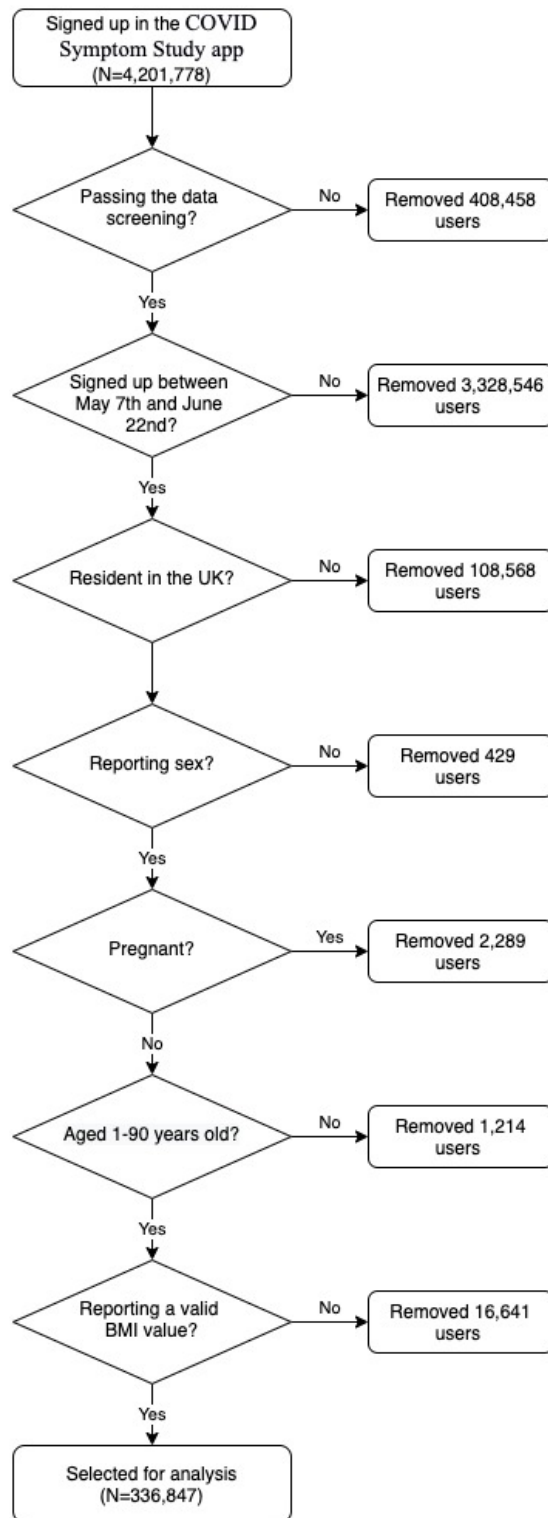
⁶Institut d'Investigacions Biomèdiques August Pi I Sunyer, Barcelona, Spain

⁷University Hospitals of Derby and Burton NHS Foundation Trust, Derby, UK

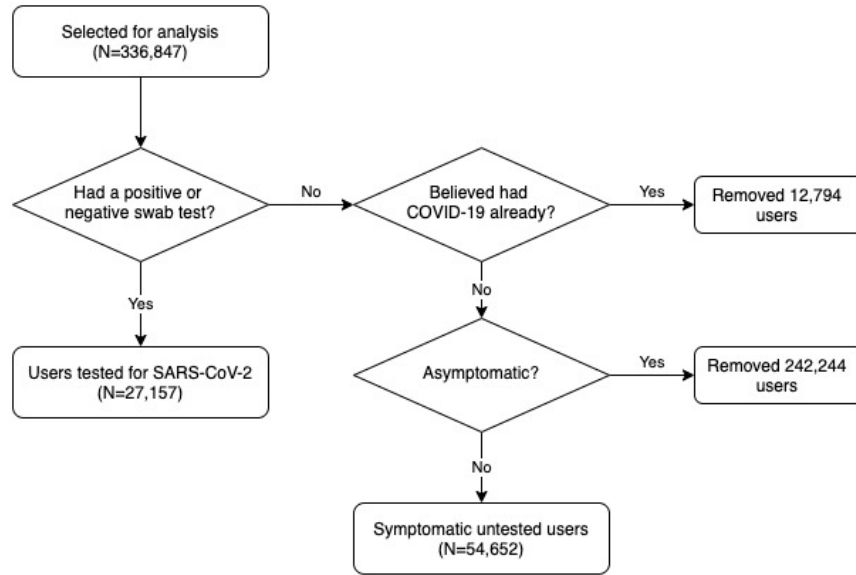
⁸School of Biomedical Engineering & Imaging Sciences, King's College London, London, UK

*These authors contributed equally

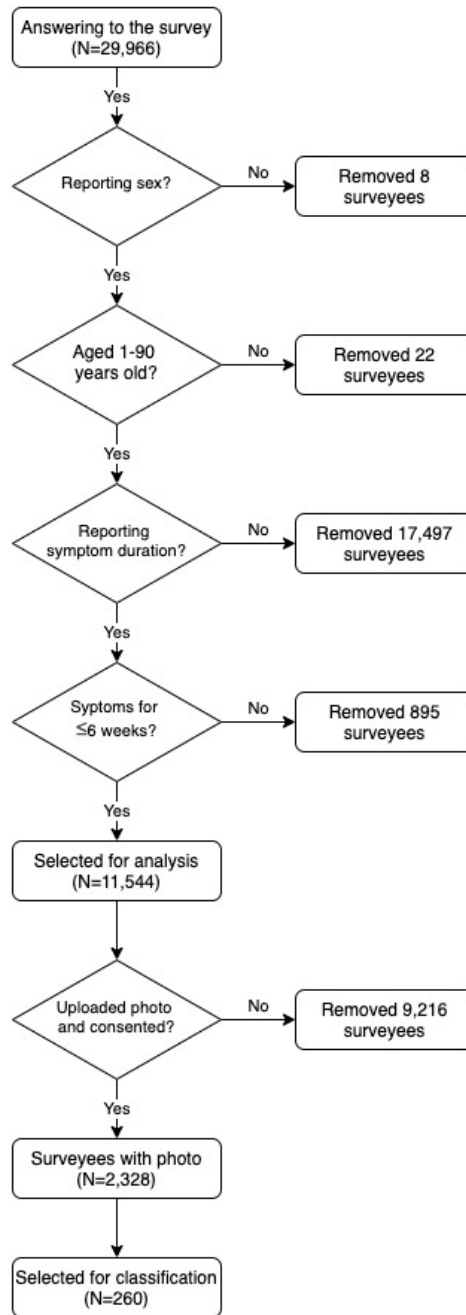
†These authors jointly supervised this work



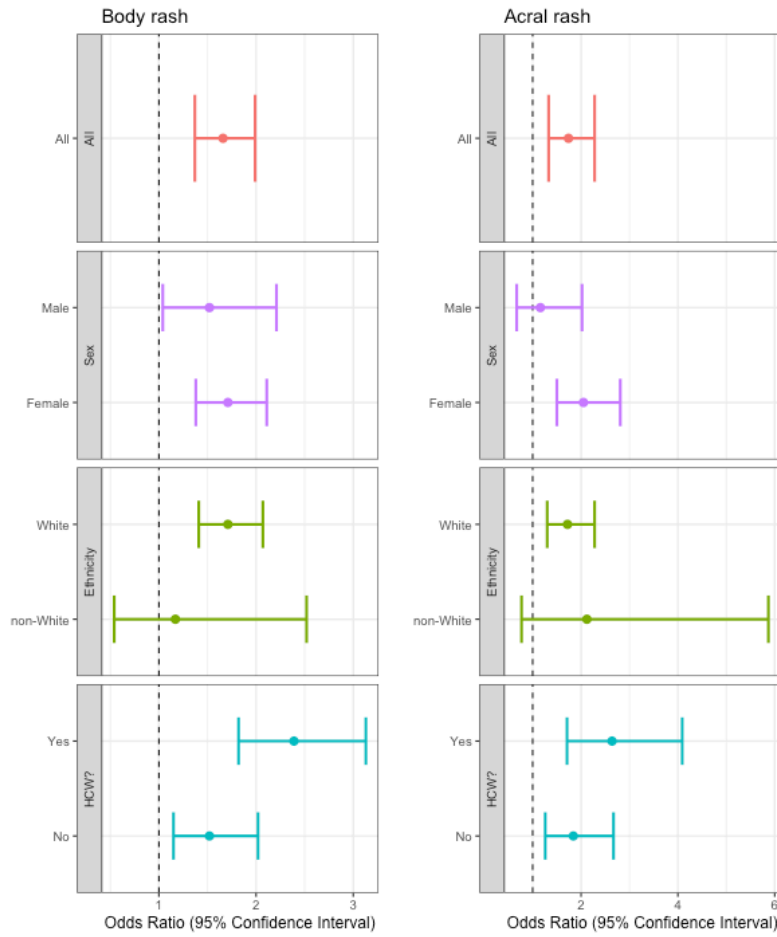
Supplementary Figure 1. The flowchart depicts the protocol used for selecting the study sample from the COVID Symptom Study app data. The data screening was carried out using the zoe-data-prep python script (<https://github.com/KCL-BMEIS/zoe-data-prep>, version 0.1.9) which was used to retain users satisfying the following criteria: logged at least once, age range between 0 and 120 years old, height between 20 and 220 cm, weight between 3 and 200 kg, and body mass index (BMI) between 0 and 100 kg/m². Valid body mass index (BMI) values were: inside the range of 15 to 55 kg/m², for users 16 years old or older, or inside two standard deviation from the sample's mean for each age, for users younger than 16 years old.



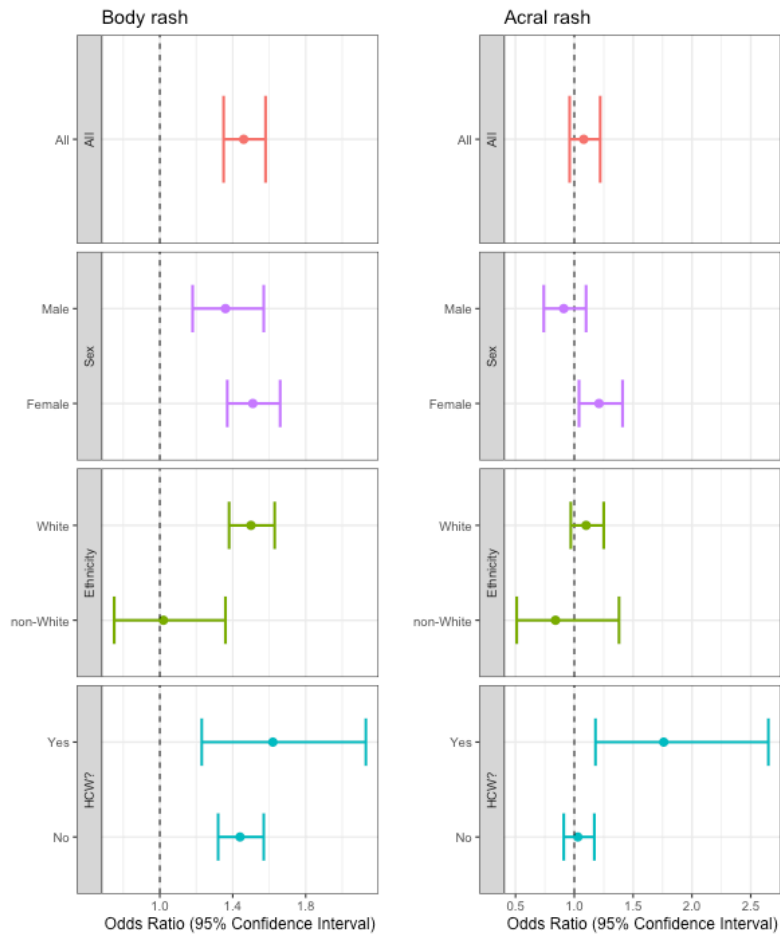
Supplementary Figure 2. The flowchart depicts the protocol used to partition the selected COVID Symptom Study app users (see Supplementary Figure 1) in users tested for SARS-CoV-2 and in untested asymptomatic users.



Supplementary Figure 3. The flowchart depicts the protocol used for selecting the study sample from the survey data.



Supplementary Figure 4. Sensitivity analysis for multivariate logistic regression in users tested for SARS-CoV-2 infection. Forest plots showing the OR of self-reporting a skin-related symptom in users tested for SARS-CoV-2 infection, stratified by sex, ethnicity, and being a healthcare worker (HCW).



Supplementary Figure 5. Sensitivity analysis for multivariate logistic regression in untested symptomatic users. Forest plots showing the OR of self-reporting a skin-related symptom in users while experiencing at least one of the three classic symptoms included in the UK NHS guidelines (*i.e.*, fever, persistent cough, and/or anosmia) stratified by sex, ethnicity, and being a healthcare worker (HCW).

a



b



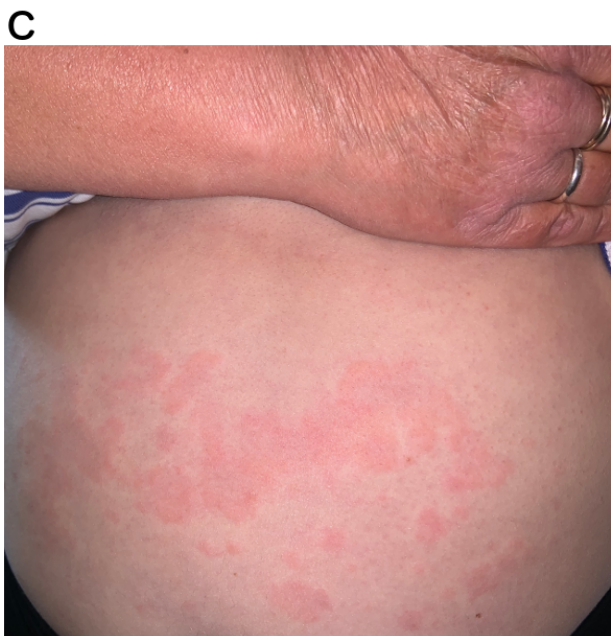
c



d



Supplementary Figure 6. Examples of papular rash. (a) Erythematopapular rash on forearm. (b) Erythematopapular rash on arm. (c) Erythematopapular rash with some dried vesicles on the elbows. (d) Erythematopapular rash on the forearm.



Supplementary Figure 7. Examples of urticarial rash. (a) Tumid urticated plaques on arm. (b) Urticated plaques on the abdomen with annular lesions. (c) Urticarial rash on abdomen. (d) Widespread urticaria on the thighs.

a



b



Supplementary Figure 8. Examples of acral rash. (a) Erythema on the dorsal aspects of all toes with some epidermal necrosis on the 4th and 5th toe. (b) Swelling of the toe with erythema.

Supplementary Tables

Supplementary Table 1. Sample characteristics. Values are reported as number and percentage. Ethnicity, smoking, disease status and medications were compared using Pearson's χ^2 test, as implemented in the prop.test function (stats R package, v 3.6.0). "Users tested for SARS-CoV-2" refers to users self-reporting a positive or negative swab test result. "Symptomatic untested users" refers to users who reported at least one of the 16 collected symptoms, did not believe that they had already had COVID-19 when registering with the app, and had not been tested for SARS-CoV-2. "Classic symptoms" refer to those included in the NHS guidelines (*i.e.*, fever, persistent cough, and/or anosmia), whose presence would require isolation and testing for SARS-CoV-2 infection.

	All users		Users tested for SARS-CoV-2				Symptomatic untested users		
	All	Positive	Negative	P	All	With classical symptoms	Without classic symptoms	P	
N	336,847	27,157	2,021	25,136	54,652	17,371	37,281		
Ethnicity					4.72x10 ⁻⁶			<2x10 ⁻¹⁶	
Asian	6,503 (1.9%)	646 (2.4%)	70 (3.5%)	576 (2.3%)	1,029 (1.9%)	422 (2.4%)	607 (1.6%)		
Black	2,105 (0.6%)	232 (0.9%)	34 (1.7%)	198 (0.8%)	370 (0.7%)	143 (0.8%)	227 (0.6%)		
Chinese	1,029 (0.3%)	87 (0.3%)	6 (0.3%)	81 (0.3%)	134 (0.2%)	43 (0.2%)	91 (0.2%)		
Middle East	1,204 (0.4%)	114 (0.4%)	13 (0.6%)	101 (0.4%)	187 (0.3%)	84 (0.5%)	103 (0.3%)		
Mixed	6,974 (2.1%)	526 (1.9%)	35 (1.7%)	491 (2.0%)	1,295 (2.4%)	508 (2.9%)	787 (2.1%)		
White	316,567 (94.0%)	25,341 (93.3%)	1,840 (91.0%)	23,5012 (93.5%)	51,188 (93.7%)	16,021 (92.2%)	35,167 (94.3%)		
N/A	2,465 (0.7%)	211 (0.8%)	23 (1.1%)	188 (0.7%)	449 (0.8%)	150 (0.9%)	299 (0.8%)		
Smoking status					0.04			<2x10 ⁻¹⁶	
Never	241,093 (71.6%)	18,499 (68.1%)	1,396 (69.1%)	17,103 (68.0%)	37,932 (69.4%)	11,752 (67.7%)	26,180 (70.2%)		
Ex	62,563 (18.6%)	5,655 (20.8%)	436 (21.6%)	5,219 (20.8%)	10,726 (19.6%)	3,193 (18.4%)	7,533 (20.2%)		
Current	33,176 (9.8%)	3,002 (11.1%)	189 (9.4%)	2,813 (11.2%)	5,994 (11.0%)	2,426 (14.0%)	3,568 (9.6%)		

Has diabetes (%)	12,884 (3.8%)	1,1191 (4.4%)	113 (5.6%)	1,078 (4.3%)	7.04×10^{-3}	2,109 (3.9%)	704 (4.1%)	1,405 (3.8%)	0.11
Has heart disease (%)	10,052 (3.0%)	936 (3.4%)	78 (3.9%)	858 (3.4%)	0.32	1,663 (3.0%)	529 (3.0%)	1,134 (3.0%)	1.00
Has lung disease (%)	31,489 (9.3%)	3,150 (11.6%)	264 (13.1%)	2,886 (11.5%)	3.58×10^{-2}	6,912 (12.6%)	2,603 (15.0%)	4,309 (11.6%)	3.71×10^{-29}
Has kidney disease (%)	2,598 (0.8%)	293 (1.1%)	29 (1.4%)	264 (1.1%)	0.13	527 (1.0%)	169 (1.0%)	358 (1.0%)	0.93
Has cancer (%)	4,456 (1.3%)	543 (2.0%)	34 (1.7%)	509 (2.0%)	0.33	660 (1.2%)	210 (1.2%)	450 (1.2%)	1.00
Corticosteroids (%)	24,583 (7.3%)	2,491 (9.2%)	190 (9.4%)	2,301 (9.2%)	0.74	5,601 (10.2%)	2,028 (11.7%)	3,573 (9.6%)	6.95×10^{-14}
Immunosuppressants (%)	12,006 (3.6%)	1,138 (4.2%)	75 (3.7%)	1,063 (4.2%)	0.29	2,415 (4.4%)	910 (5.2%)	1,505 (4.0%)	2.26×10^{-10}
Blood pressure medications (%)	44,061 (13%)	3,593 (13.2%)	273 (13.5%)	3,320 (13.2%)	0.73	6,272 (11.5%)	1,852 (10.7%)	4,420 (11.9%)	4.80×10^{-5}

Supplementary Table 2. Sensitivity analysis for multivariate logistic regression in users tested for SARS-CoV-2 infection. Associations between the presence/absence of self-reported skin-related symptoms and test results in users tested for SARS-CoV-2 infection, stratified by sex, ethnicity and being a healthcare worker, were carried out through multivariate logistic regression, and the following variables were included as covariates: sex, age, BMI, ethnicity (namely: Asian, Black, Chinese, Middle Eastern, White, or mixed), smoking status (namely: never, ex, current), common disease status (namely: diabetes and lung disease), and whether corticosteroids, immunosuppressants, or blood pressure medications were administered.

Risk factor	Stratum	N	Body rash			Acral Rash		
			OR	95% CI	P	OR	95% CI	P
	All sample	26,945	1.66	1.37-1.99	1.06x10 ⁻⁷	1.74	1.33-2.28	5.91x10 ⁻⁵
Sex	Male	10,598	1.52	1.04-2.21	0.03	1.16	0.67-2.02	0.590
	Female	16,347	1.71	1.38-2.11	1.11x10 ⁻⁶	2.05	1.50-2.81	7.69x10 ⁻⁶
Ethnicity	White	25,340	1.71	1.41-2.07	4.51x10 ⁻⁸	1.72	1.30-2.28	1.71x10 ⁻⁴
	Non-White	1,605	1.17	0.54-2.52	0.698	2.12	0.77-5.87	0.146
Healthcare worker?	Yes	7,429	2.39	1.82-3.13	2.87x10 ⁻¹⁰	2.64	1.71-4.09	1.27x10 ⁻⁵
	No	19,516	1.52	1.15-2.02	3.44x10 ⁻³	1.84	1.26-2.67	1.45x10 ⁻³

Supplementary Table 3. Sensitivity analysis for multivariate logistic regression in untested symptomatic users. Associations between the presence/absence of self-reported skin-related symptoms and presence/absence of at least one the three classic symptoms included in the NHS guidelines (*i.e.*, fever, persistent cough, and/or anosmia) in untested symptomatic users, stratified by sex, ethnicity and being a healthcare worker, were carried out through multivariate logistic regression, and the following variables were included as covariates: sex, age, BMI, ethnicity (namely: Asian, Black, Chinese, Middle Eastern, White, or mixed), smoking status (namely: never, ex, current), common disease status (namely: diabetes and lung disease), and whether corticosteroids, immunosuppressants, or blood pressure medications were administered.

Risk factor	Stratum	N	Body rash			Acral Rash		
			OR	95% CI	P	OR	95% CI	P
	All sample	54,203	1.46	1.35-1.58	1.94x10 ⁻²⁰	1.08	0.96 1.22	0.205
Sex	Male	19,697	1.36	1.18-1.57	1.46x10 ⁻⁵	0.91	0.74 1.10	0.331
	Female	34,506	1.51	1.37-1.66	2.34x10 ⁻¹⁶	1.21	1.04 1.41	0.016
Ethnicity	White	51,188	1.50	1.38-1.63	6.36x10 ⁻²²	1.10	0.97 1.25	0.135
	Non-White	3,015	1.02	0.75-1.36	0.921	0.84	0.51 1.38	0.486
Healthcare worker?	Yes	5,298	1.62	1.23-2.13	5.34x10 ⁻⁴	1.76	1.18 2.65	6.12x10 ⁻³
	No	48,905	1.44	1.32-1.57	1.47x10 ⁻¹⁷	1.03	0.91 1.17	0.631