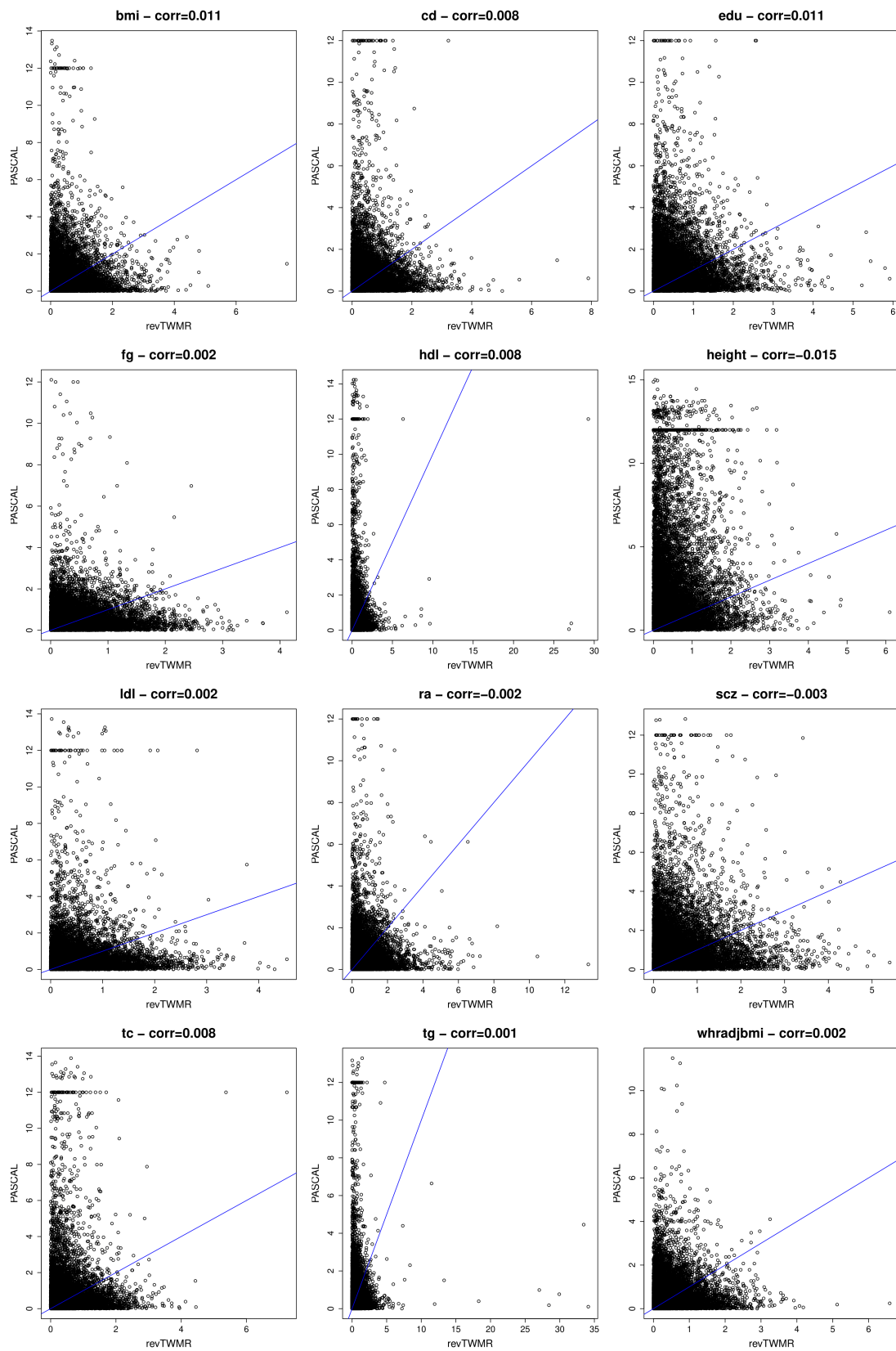


Supplementary Information

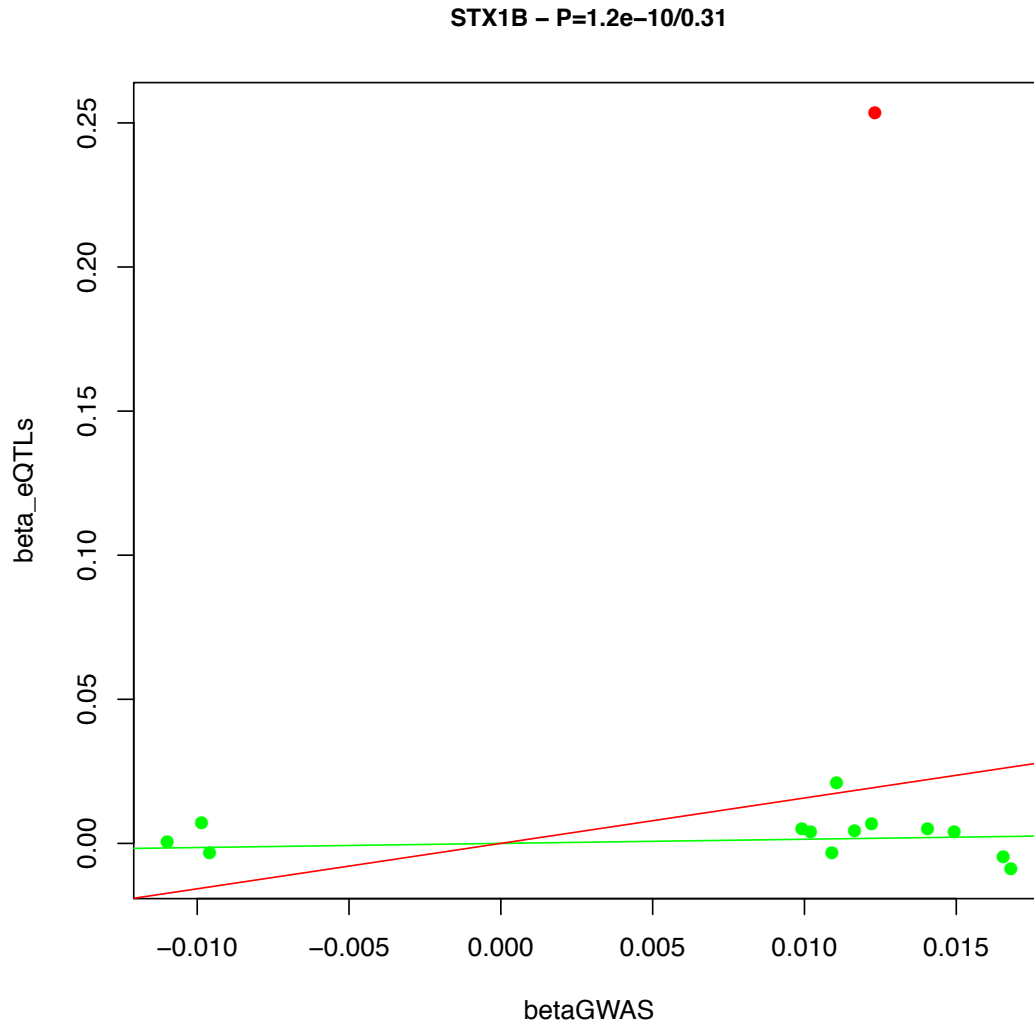
**Differentially expressed genes reflect disease-induced rather than
disease-causing changes in the transcriptome**

Porcu et al.

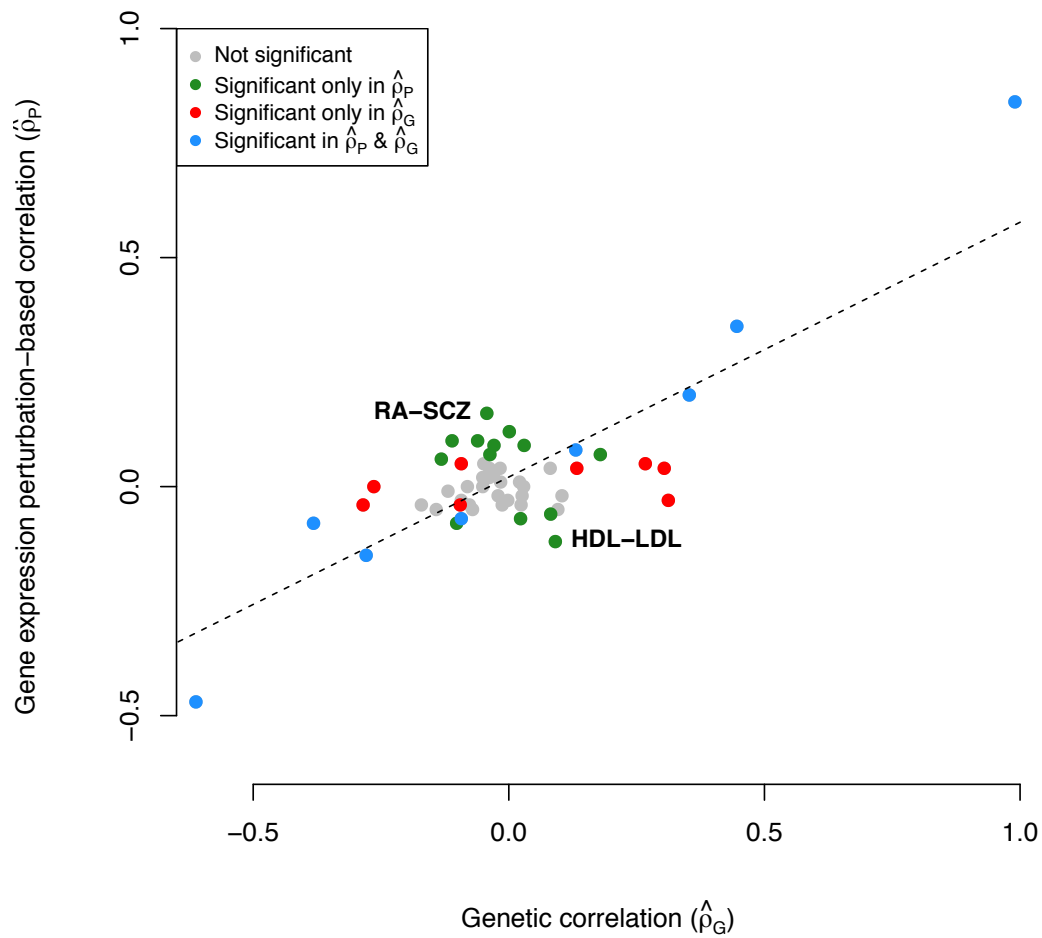
Supplementary Figure 1. Comparison between revTWMR and PASCAL results. For each gene we compared the $-\log_{10}(P\text{-value})$ calculated by revTWMR (x-axis) and PASCAL (y-axis).



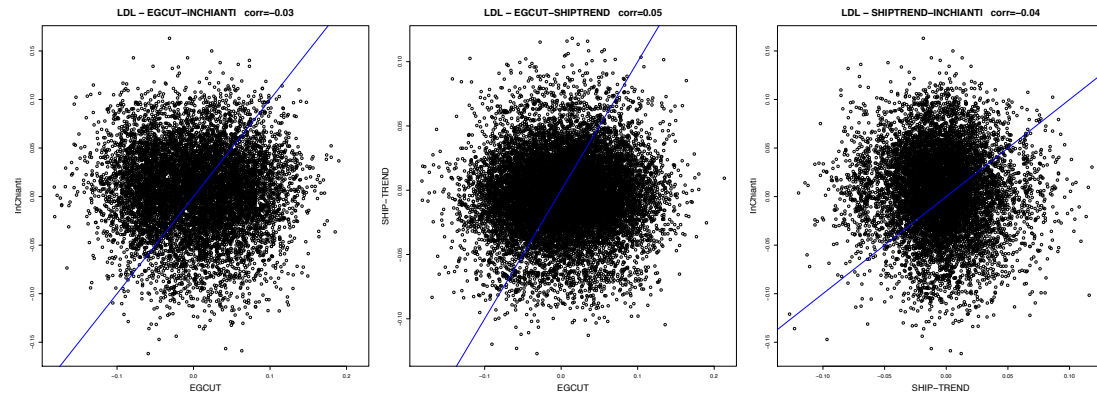
Supplementary Figure 2. Pleiotropic SNP leads to biased association for STX1B. For each SNP we plotted its effect on educational attainment (x-axis) and on the expression of STX1B (y-axis). The red and the green line represent the causal effect estimated by revTWMR before and after removing rs2456973 (red dot) respectively.



Supplementary Figure 3. Linear relationship between the perturbation correlation ($\hat{\rho}_P$) and the genetic correlation ($\hat{\rho}_G$) obtained from LD Score Regression. We selected the traits analyzed by our study and Bulik-Sullivan et al [1] and for each pair of traits we compared the two correlations. Gray dots represent non-significant trait pairs, blue dots represent trait pairs significant for both correlation and red and green ones correspond to pairs of traits significant only in $\hat{\rho}_G$ or $\hat{\rho}_P$, respectively. The dotted line represents the regression line



Supplementary Figure 4. Correlation of DEG results for LDL in the three independent cohort. For each gene we compared its expression-trait correlation in two cohorts. The blue line represents the identity line.



References

1. Bulik-Sullivan, B., et al., *An atlas of genetic correlations across human diseases and traits.* Nat Genet, 2015. **47**(11): p. 1236-41.