

1 **Epidemiology of soil-transmitted helminths following sustained implementation of**
2 **routine preventive chemotherapy: demographics and baseline results of a cluster**
3 **randomised trial in southern Malawi**

4 Stefan Witek-McManus^{1*}, James Simwanza², Alvin B. Chisambi², Stella Kepha^{1,3,4}, Zachariah
5 Kamwendo², Alfred Mbwinja⁵, Lyson Samikwa⁵, William E. Oswald¹, David S. Kennedy¹,
6 Joseph W.S. Timothy¹, Hugo Legge¹, Sean R. Galagan⁶, Mira Emmanuel-Fabula⁶, Fabian
7 Schaer⁷, Kristjana Ásbjörnsdóttir⁸, Katherine E. Halliday¹, Judd L. Walson^{6,8,9}, Lazarus
8 Juziwelo¹⁰, Robin L. Bailey¹¹, Khumbo Kalua^{2,5†}, Rachel L. Pullan^{1†}

9 *Corresponding author (stefan.witek-mcmanus@lshtm.ac.uk)

10 †Joint senior authors

11 1. Department of Disease Control, London School of Hygiene & Tropical Medicine, London,
12 UK

13 2. Blantyre Institute for Community Outreach, Lions Sight First Eye Hospital, Blantyre, Malawi

14 3. Eastern and Southern Africa Centre of International Parasite Control, Kenya Medical
15 Research Institute, Nairobi, Kenya

16 4. Pwani University Bioscience Research Centre, Pwani University, Kilifi, Kenya

17 5. College of Medicine, University of Malawi, Blantyre, Malawi

18 6. Department of Global Health, University of Washington, Seattle, USA

19 7. DeWorm3, Division of Life Sciences, Natural History Museum, London, UK

20 8. Department of Epidemiology, University of Washington, Seattle, USA

21 9. Department of Medicine and Department of Paediatrics, University of Washington, Seattle,
22 USA

NOTE: This preprint reports new research that has not been certified by peer review and should not be used to guide clinical practice.

23 10. National Schistosomiasis and STH Control Programme, Community Health Sciences Unit,
24 Ministry of Health & Population, Lilongwe, Malawi

25 11. Department of Clinical Research, London School of Hygiene & Tropical Medicine, London,
26 UK

27 **Financial Disclosure:**

28 The DeWorm3 Project is funded by a grant from the Bill & Melinda Gates Foundation
29 (OPP1129535) TL, JLW. SK is supported by THRiVE- 2, a DELTAS Africa grant #DEL-15-011
30 from Wellcome Trust grant #107742/Z/15/Z and the UK Government. The funders had no role
31 in study design, data collection and analysis, decision to publish, or preparation of the
32 manuscript.

33 **Competing Interests:**

34 The authors have declared that no competing interests exist.

35 **Data Availability Statement:**

36 Data cannot be shared publicly at the time of publication because the study remains blinded
37 to outcome data. Data are available through the LSHTM Data Compass for researchers who
38 meet the criteria for access to these data.

39 1. ABSTRACT

40 Malawi has successfully leveraged multiple delivery platforms to scale-up and sustain the
41 implementation of preventive chemotherapy (PCT) for the control of morbidity caused by soil-
42 transmitted helminths (STH). Sentinel monitoring demonstrates this strategy has been
43 successful in reducing STH infection in school-age children, although our understanding of
44 the contemporary epidemiological profile of STH across the broader community remains
45 limited. As part of a multi-site trial evaluating the feasibility of interrupting STH transmission
46 across three countries, this survey aimed to describe the baseline demographics and the
47 prevalence, intensity and associated risk factors of STH infection in Mangochi district,
48 southern Malawi. Between October-December 2017, a household census was conducted
49 across the catchment area of seven primary healthcare facilities, enumerating 131,074
50 individuals across 124 villages. A cross-sectional survey was then conducted between March-
51 May 2018 in the enumerated area as a baseline for a cluster randomised trial. An age-stratified
52 random sample of 6,102 individuals were assessed for helminthiasis by Kato-Katz and
53 completed a detailed risk-factor questionnaire. The age-cluster weighted prevalence of any
54 STH infection was 7.8% (95% C.I. 7.0%-8.6%) comprised predominantly of hookworm species
55 and of entirely low-intensity infections. The presence and intensity of infection was significantly
56 higher in men and in adults. Infection was negatively associated with risk factors that included
57 increasing levels of relative household wealth, higher education levels of any adult household
58 member, current school attendance, or recent deworming. In this setting of relatively high
59 coverage of sanitation facilities, there was no association between hookworm and reported
60 access to sanitation, handwashing facilities, or water facilities. These results describe a setting
61 that has reduced the prevalence of STH to a very low level and confirms many previously
62 recognised risk-factors for infection. Expanding the delivery of anthelmintics to groups where
63 STH infection persist could enable Malawi to move past the objective of elimination of
64 morbidity, and towards the elimination of STH.

65 **2. AUTHOR SUMMARY**

66 The major public health strategy to control soil-transmitted helminths (STH) is preventive
67 chemotherapy, whereby those at greatest risk of morbidity – children and women of
68 childbearing age - are presumptively treated with a safe, effective and inexpensive
69 anthelmintic drug. In Malawi, this has been successfully sustained for nearly a decade
70 through annual school-based deworming, in addition to integration within child health
71 campaigns and routine antenatal care. Routine surveillance of schoolchildren demonstrates
72 that STH has been reduced to very low levels in this age group, but few community-based
73 epidemiological surveys have been conducted to investigate STH in the broader population.
74 In this survey, we observed that while infection with STH has been reduced to low levels
75 overall, it is much higher in adults and particularly in males, with the odds of being infected
76 greater in those from less wealthy households or from households with lower levels of adult
77 education. These results underline that while preventive chemotherapy has likely been key to
78 reductions in STH; sub-populations not routinely targeted by preventive chemotherapy, and
79 the most disadvantaged members of society, continue to be disproportionately affected. We
80 propose that evaluation of more comprehensive control strategies – such as entire-community
81 deworming – could overcome these limitations, and present a route to STH elimination.

82 3. INTRODUCTION

83 Over the past two decades, the predominant approach to the control of soil-transmitted
84 helminths (STH) has been the periodic administration of anthelmintic medicines to populations
85 considered at greatest risk of morbidity –pre-school and school-age children, adolescent girls,
86 and women of reproductive age – using an approach referred to as preventive chemotherapy
87 (PCT). Aligned with global recommendations by the World Health Organisation (WHO), control
88 programmes coordinated by Ministries of Health and Education in partnership with non-
89 governmental organizations (NGOs) and multi-lateral agencies have rapidly increased
90 treatment coverage of pre-school aged (PSAC) and school aged children (SAC) from less than
91 15% of the global at-risk population in 2005 to nearly 70% by 2017 [1]. It has been estimated
92 that this scale up has averted the loss of more than 500,000 disability-adjusted life years
93 through sustained reduction in the intensity of STH infections [2].

94 In many STH endemic countries, including Malawi, control programmes routinely leverage up
95 to four established mechanisms to reach these target populations with anthelmintics: at
96 primary schools, during child-health campaigns, during mass drug administration for lymphatic
97 filariasis, and within maternal health services. Since 2004, the National Schistosomiasis
98 Control Programme (NSCP) of Malawi has included albendazole when implementing annual
99 school-based delivery of praziquantel for schistosomiasis, with community-based mop-up
100 days targeting non-attending school-aged children (SAC). In tandem, biannual “Child Health
101 Days” deliver a package of health services to children under five years old that includes
102 albendazole [3]. Treatment coverage for STH has been consistently high in both groups, with
103 national coverage of 92% of PSAC and 75% of SAC reported to have received treatment in
104 2017 [4]. There has been substantial scale-up of focused antenatal care, which routinely
105 includes anthelmintic treatment after the first trimester [5]. While implementation of routine
106 antenatal care (ANC) has been erratic [6], the 2015-16 Demographic and Health Survey (DHS)
107 reported that 52% of women took deworming medication during their last pregnancy [7].
108 Additional small-scale deworming continues to be carried out ad-hoc at sub-national levels,

109 but may not be consistently reported [8, 9]. Historic programmes, including the National
110 Programme to Eliminate Lymphatic Filariasis (NPELF) have previously delivered albendazole
111 (with ivermectin) annually to all individuals over the age of 5 years between 2008-2013 [10].

112 Together, these approaches can be viewed as a comprehensive STH control strategy that has
113 resulted in the sustained delivery of anthelmintic treatment at consistently high levels to much
114 of the population of Malawi for more than a decade. Accordingly, published literature on the
115 prevalence of STH infection within Malawi broadly describes a setting where STH infection
116 has declined during the past two decades, with the most recent national community-based
117 survey conducted in 2011 reporting an STH prevalence of 0.3-3.8% [11]. It is therefore likely
118 that the recently announced WHO 2030 targets for STH control programmes of “achieving and
119 maintaining elimination of STH morbidity in PSAC and SAC” has been reached in Malawi [12].
120 To sustain and build upon these gains, it is crucial that routine sentinel monitoring surveys
121 conducted with school-going children are accompanied by periodic comprehensive age and
122 sex stratified epidemiological surveys. Such surveys can highlight demographic groups where
123 STH infection continue to persist, identify contemporary and contextually relevant risk-factors,
124 and can support informed and rational evaluation of the current STH control strategy, as
125 demonstrated in similar settings elsewhere [13, 14].

126 Here, we describe the profile of STH infection across communities in Mangochi district,
127 southern Malawi, a previously highly endemic area, and investigate environmental, household
128 and individual factors in order to identify population groups that remain at highest risk of
129 infection. The data presented comprise a census and cross-sectional parasitological survey
130 conducted in 2018 as a baseline for the Deworm3 Malawi trial, an ongoing evaluation of the
131 feasibility of interrupting STH transmission through biannual community-based MDA [15].

132 **4. METHODS**

133 Reporting of this study has been verified in accordance with the Strengthening the Reporting
134 of Observational Studies in Epidemiology (STROBE) checklist [16].

135 **4.1. Ethical considerations**

136 The parent trial of this study is registered at *ClinicalTrials.gov* (NCT03014167). This study was
137 approved by the College of Medicine Research Ethics Committee (COMREC) (P.04/17/2161),
138 the London School of Hygiene & Tropical Medicine (LSHTM) Observational/Interventions
139 Research Ethics Committee (12013) and the Human Subjects Division at the University of
140 Washington (STUDY00000180). Prior to beginning each survey, community engagement
141 activities were conducted with respect to traditional leadership structures. Senior study officers
142 conducted planning meetings with the Area Development Committees (ADC) responsible for
143 the study site, who subsequently met with the respective Group Village Headman (GVH) and
144 Village Headmen to coordinate engagement activities at the village level.

145 At the time of the census, written informed consent was sought from the head of household or
146 other adult household member before answering the questionnaire; for the parasitological
147 survey, consent was sought from the individual selected to provide the stool sample and
148 complete the individual-level questionnaire. Parental consent was sought for participants
149 between 2 and 15 years and written assent was additionally obtained from participants aged
150 7 to 15 years. All information and consent procedures were conducted in relevant local
151 languages (Chichewa or Chiyao). Where a participant was willing to give consent but was not
152 functionally literate in the relevant language to complete the written consent form, a literate
153 and impartial (i.e. not directly associated to any study staff member) witness of the participants
154 choice was invited to witness the consent process. Where no impartial literate witness could
155 be identified, the village volunteer accompanying the fieldworker conducting the survey was
156 eligible to act as witness if they were functionally literate; and where both neither a functionally
157 literate impartial witness or village volunteer was available, any impartial witness of the
158 participants choice fulfilled this role.

159 Treatment of participants identified as positive for STH was administered by the relevant
160 community health worker, known as a *Health Surveillance Assistant* (HSA) using albendazole
161 (400mg). Participants residing in a cluster subsequently randomised to the intervention arm of

162 the study were expected to receive this treatment during the first round of the study
163 intervention alongside all other eligible community members, and participants residing in a
164 cluster that was randomised to the control arm of the trial were individually visited to be treated
165 if (i) aged 2-14 years identified with an STH infection of any intensity or (ii) aged ≥ 15 years
166 and identified with an STH infection of moderate or high intensity (MHI). All other infections
167 identified (e.g. *Schistosoma* spp.) were treated as per national guidelines.

168 **4.2. Study setting and population**

169 This study was conducted within Namwera zone, one of five health services provision units
170 located in Mangochi district in the southern region of Malawi (Figure 2). Mangochi is a
171 relatively rural area of Malawi, with 55% of the population aged under 18 years [17]. In line
172 with regional and national trends, household use of basic sanitation and protected water
173 sources is high, exceeding 90%. In contrast to other districts of Malawi, the majority ethnic
174 group of the district is Yao and most common religion is Islam. The predominant source of
175 livelihood is *ganyu* or informal off-farm labour and the district has the lowest literacy rate
176 nationally [17]. Following certification by WHO of the elimination of lymphatic filariasis (LF) in
177 2015 through community-based mass administration of albendazole and ivermectin, the
178 district remains endemic for STH and schistosomiasis.

179 **4.3. Community survey design**

180 A community census was conducted between October-December 2017 by the study team in
181 collaboration with the Ministry of Health & Population (MoH&P). A total of 124 villages were
182 surveyed in Namwera, based on pre-established community health worker implementation
183 units ('HSA catchment areas') linked to seven primary healthcare facilities that serve the area.
184 In each village, a trained enumerator accompanied by a village volunteer administered a
185 standard household survey to an adult member of each household following provision of
186 informed written consent. If at the time of the initial visit either all adult members of the
187 household were absent, or no adult member was available to consent or respond to the

188 survey, at least two further re-visits were conducted to complete the survey. For all inhabited
189 and consenting households, each member was individually enumerated and their residential
190 status and school enrolment or education level recorded. Household-level information was
191 collected using both reported (e.g. asset and livestock ownership, source of livelihood, and
192 access to water and sanitation services) and observed (e.g. materials used for household
193 construction) measures. Surveyed household were provided with a study ID card to facilitate
194 household identification and linkage in subsequent study activities. GPS coordinates of all
195 surveyed households, in addition to vacant and non-residential structures, were collected.
196 Quality control of surveys was conducted through random spot check by fieldwork supervisors
197 and re-visits of 10% of surveyed households conducted by senior enumerators.

198 **4.4. Cluster delineation**

199 Prior to demarcation, two censused villages were excluded due to their geographical isolation
200 from the study site. Using the household GPS coordinates collected during the census, the
201 remaining villages were allocated into 40 study clusters, with priority given to preserving HSA
202 catchment areas. Where an HSA catchment met the required cluster population size (1,650-
203 4000 individuals) and was comprised of contiguous villages, the implementation unit served
204 as the cluster. Where an HSA catchment was smaller than the required cluster population
205 size, or was comprised of villages that were not contiguous, villages served by different
206 community health workers were combined to form a cluster within the required population size.
207 Where an implementation unit was larger than the required cluster population size, single
208 villages were classified as a cluster. No villages were sub-divided during this process.

209 **4.5. Parasitological survey design**

210 A parasitological survey of the study site was conducted between March and June 2018. The
211 sample size determination has previously been described, and resulted in the selection of 150
212 individuals in each of 40 clusters [15]. In each cluster, an age-stratified sample of individuals
213 (30 pre-SAC (1-4 years of age), 30 SAC (5-14 years of age) and 90 adults (≥ 15 years of age)

214 were randomly selected using the census as a sampling frame. Each sampled individual was
215 approached at their household by a trained enumerator accompanied by a village volunteer
216 and invited to participate in the survey. To maximise opportunity for recruitment, individuals
217 were re-visited at their household at least two further times if they were absent or unavailable
218 at the initial visit. Sampled individuals who could be located were invited to participate in the
219 survey following confirmation that they were eligible (aged over 12 months, still resident within
220 the study site, and did not plan to migrate outside the study site within five years). At the
221 household level, reported water storage was recorded and structured observations of water
222 storage and handwashing facilities conducted. Individual-level information on each enrolled
223 participant included reported deworming treatment in the past year, observed shoe wearing,
224 and latrine usage. Where sampled individuals reported using a toilet facility, observations were
225 made on toilet facilities. Following completion of the questionnaire, participants were
226 requested to provide a single stool specimen. Specimens were collected the same day or early
227 the following morning, with two further follow-up visits conducted where a specimen was not
228 provided or was not suitable. Once >80% of sampled individuals had been recorded as not
229 located, no longer resident, not eligible or refused to consent, sequential lists of replacement
230 individuals (15 pre-SAC, 15 SAC and 45 adults) were provided to enumerators until the target
231 sample size in each age category was achieved.

232 **4.6. Parasitological assessments**

233 Stool specimens were placed into cooler boxes and transported to a field laboratory within
234 eight hours of being collected from the participant. Specimens were then prepared for
235 examination by Kato-Katz thick-smear method [18]. Two slides were prepared per specimen
236 and read in duplicate by pairs of independent technicians between 30 to 60 minutes after slide
237 preparation. A second slide reading for *S. mansoni* was conducted between 18 and 24 hours
238 following the first reading per recommended practice [19]. Egg counts for each STH species,
239 *Schistosoma spp.* and other helminth species were recorded separately. Infection was defined
240 as the presence of at least one egg on at least one slide, confirmed by at least two laboratory

241 technicians. Intensity was expressed as the arithmetic mean of eggs per gram (epg) of faeces
242 across the two slides, categorised according to WHO classifications [20]. A random sample of
243 10% of all readings were re-read by a senior technician for the purpose of quality control.
244 Following microscopic examination, a set of three aliquots containing 500mg of whole stool
245 sample suspended in 1ml of 95% ethanol were prepared in a separate area of the laboratory
246 and cryopreserved at -80°C for future parasite DNA extraction and qPCR analysis.

247 **4.7. Environmental covariates**

248 Analysis considered a suite of environmental and topographic conditions previously identified
249 as potential drivers of STH transmission [13]. Data sources included: Enhanced Vegetation
250 Index (EVI) and Land Surface Temperature (LST), produced by processing satellite images
251 provided by the Moderate Resolution Imaging Spectroradiometer (MODIS) instrument
252 operating in the Terra spacecraft (NASA) at a resolution of 250m; elevation and aridity at 1km²
253 from the Consortium for Spatial Information (CGIAR-CSI); soil acidity (pH KCl) and sand
254 content from soilgrids.org at a resolution of 250m [21]. Environmental, topographic and
255 population measures were extracted using point-based extraction for each household using
256 ArcGIS 10.3 (Environmental Systems Research Institute Inc. Redlands, CA, US). Estimates
257 of population density per square kilometre were constructed by summing the total number of
258 individuals within a 1km² buffer around each household in ArcGIS. For households near study
259 area boundaries, areas of the buffer that fell outside of the study area were removed and the
260 population density was calculated by the number of individuals within the buffer divided by the
261 remaining area of the buffer.

262 **4.8. Analysis**

263 Data management and analyses were performed using Stata 15 (StataCorp, 2017; College
264 Station, TX, USA). Information on ownership of household assets was used to construct a
265 wealth index for each household using principal component analysis (PCA). Variables used to
266 construct the final PCA included materials used to construct the household dwelling roof (grass

267 thatch, metal), walls (fired brick, covered unfired brick) windows (none) and door (wooden
268 planks); and household ownership of a cooking stove, mobile phone, mattress, bed and
269 bicycle (average inter-item correlation=0.27, alpha=0.80). The first principal component
270 accounted for 35.8% of the total variance. The indices were divided into quintiles within each
271 setting. Household factors potentially associated with infection outcomes, including toilet
272 facilities and household flooring, were not included in the wealth index to allow for independent
273 assessment. Classification of household water, sanitation and handwashing facilities (WASH)
274 was done according to WHO/UNICEF Joint Monitoring Programme (JMP) guidelines [22, 23].

275 Prevalence and intensity descriptive analyses used robust standard errors to account for
276 clustering. Risk factor analyses were conducted for hookworm; *T. trichiura* and *A. lumbricoides*
277 infection were not included due to very low infection levels found in the study population.
278 Univariable associations between presence of infection and individual-, household- and
279 environmental-risk factors were estimated using mixed effects logistic regression, accounting
280 for clustering at the household, village and cluster level. Associations between STH intensity
281 (eggs per gram) and risk factors were modelled using mixed effects negative binomial
282 regression of egg counts, with quantity of stool assessed per sample included as an offset,
283 again accounting for clustering at the household, village and cluster level. *A priori* interactions
284 between age and sex were investigated, considering age as both a continuous variable, and
285 by categorising into the three demographic groups used for stratification. We used a
286 backwards stepwise strategy to build separate multivariable models for prevalence and
287 intensity of both species.

288 **5. RESULTS**

289 **5.1. Community survey profile:**

290 A total of 32,606 households were identified and approached to be surveyed during the
291 census. Of these 5.5% (n=1,789) were vacant, 2.7% (n=877) had no household member
292 present, 0.6% (n=204) did not consent to the survey, and 0.05% (n=17) were unable to be

293 surveyed for other reasons. Following cluster delineation as outlined in section 3.4., once the
294 required number of clusters was reached, ten villages located on the periphery of the study
295 site containing 1,969 censused households (6.6%) and 9,255 enumerated individuals (7.1%)
296 were excluded from the main study. The resulting median cluster population was 606
297 households (IQR 566-791) and 2,751 individuals (IQR 2,405-3,450).

298 The demographic profile of the census was highly skewed towards younger age groups, with
299 48.8% (n=59,475) aged under 15 years, and females comprising 52.8% (n=64,333) of the
300 enumerated population (Table 1). Overall, participation in education was high, with 66.7% of
301 males and 70.1% of females 5 years of age (one year before the primary entry age) reporting
302 enrolment in organised learning, and 93.7% of males and 94.2% females aged 8 years (official
303 age of Standard 2/3) reporting school enrolment. However, when disaggregated by wealth,
304 participation in learning at all ages, and the proportion of adults completing primary education,
305 was consistently lowest in the poorest quintile relative to least poor. Current participation in
306 education showed broad parity by sex between the ages of 5-14, although educational
307 attainment of adult females was lower relative to adult men.

308 The median number of residents per household was four (IQR: 3-6). Most households reported
309 Islam as the primary religion practised (94.5%, n=26,211) and Chiyao as the primary language
310 of communication (95.3%, n=26,449). Reported access to basic sanitation and protected
311 water was high overall, with 93.1% of households reporting use of an improved toilet facility
312 and 98.4% of households reporting use of an improved water source as the primary source of
313 drinking water, although households in the least poor quintile consistently reported greater
314 access to improved levels of sanitation facility relative to those in the poorest quintile.

315 **5.2. Parasitological survey enrolment**

316 Of the 14,912 individuals approached to participate in the parasitological survey, 69.5%
317 (n=10,369) were present in the household and eligible. The primary reasons for unavailability
318 were temporary absence from the area (16%, n=2,390), permanent migration away from the

319 area (6.6%, n=985) or absence on the day of the survey (6.1%, n=916). Two-thirds of present
320 and eligible sampled participants consented to the survey (66%, n=6,844). Of these, 6,102
321 (89.2%) subsequently provided a stool specimen that was assessed by Kato-Katz (Figure 1).

322 Overall, the individual demographic profile of parasitological survey participants showed over-
323 representation of males in PSAC and SAC age groups and under-representation of males in
324 adults, relative to females (Figure 3). However, the majority of other individual-level
325 characteristics (e.g. participation in education, frequency of migration) and household-level
326 characteristics (household demographics; dwelling materials, assets and utilities; and access
327 to water and sanitation facilities) were broadly similar to the censused population, including
328 when disaggregated by sex and wealth (S1 Table).

329 **5.3. STH infection and intensity by species**

330 The prevalence of any STH infection across the survey population was 7.4% (1.5% in PSAC,
331 4.6% in SAC, and 11.2% in adults) resulting in an age-cluster weighted prevalence of 7.8%
332 (95% C.I. 7.0%-8.6%). Hookworm was the predominant STH species (age-cluster weighted
333 prevalence 7.5% (95% C.I. 6.7%-8.3%)) detected in all study clusters and in 83% of villages.
334 Conversely, age and cluster-population weighted prevalence of *A. lumbricoides* and *T.*
335 *trichiura* was very low (<0.1% and <0.3% respectively); with *T. trichiura* identified in 12 study
336 clusters and *A. lumbricoides* in only 3 clusters. All STH infections were of light intensity class,
337 with an arithmetic mean intensity of hookworm infection of 36 epg (SD=461).

338 **5.4. Demographic infection profile**

339 Examination of the age-sex profile showed that hookworm infection prevalence increased with
340 age across both sexes, but was lower overall in females, particularly in women under the age
341 of 35 years (Figure 4). Infection intensity remained constant until later older ages, increasing
342 at ages 60 and 70 years in men and women respectively.

343 **5.5. Predictors of hookworm infection**

344 In univariable analysis the majority of surveyed individual, household and environmental
345 factors investigated were associated with hookworm infection, except for access to sanitation
346 in the household and other WASH-related factors (Table 2). Adjusting for covariates in a
347 multivariable model, many of these associations remained, with females and younger age
348 groups consistently exhibiting lower odds of infection. There was evidence of interaction
349 between age and sex, with the difference in odds of infection by sex being most pronounced
350 among adults. Individuals from the least poor households (as assessed by household material
351 and asset index) had lower odds of hookworm infection, which was also detected to a lesser
352 extent in households where a non-manual occupation was a source of income. No association
353 was observed with access to sanitation facilities, handwashing facilities, or having to share
354 sanitation facilities. Presence of man-made flooring materials in the household was associated
355 with lower odds of hookworm infection. Currently attending school and living with a household
356 member who has completed at least primary school education were independently associated
357 with reduced odds of infection, relative to not attending school or living in households where
358 adults had no education, respectively. We observed higher odds of hookworm infection in dry
359 sub-humid areas (versus semi-arid) and with increasing elevation and topsoil sand fraction.
360 We also observed lower odds of hookworm infection in urban households (versus peri-urban
361 and rural).

362 **5.6. Predictors of hookworm intensity**

363 Hookworm infection intensity was associated with many of the same factors as presence of
364 infection, including older age, although there was no evidence of a difference by sex (Table
365 3). The relationship between hookworm infection and poverty was similar, with those in the
366 least poor households having significantly lower intensity of infection. The protective effect of
367 education also persisted, with those currently in education and households with adult
368 members with higher levels of education also having significantly lower intensity of infection.
369 No evidence of an association was observed between access to sanitation, handwashing
370 facilities, or use of shared sanitation with intensity of hookworm infection. Urban residence

371 was not associated with infection intensity, but elevation and sand fraction were again strongly
372 associated (and aridity to a lesser extent) with lower infection intensity.

373 Comparing the model random effects at the cluster, village and household level highlights the
374 extent by which both presence and intensity of infection were highly clustered within
375 households in this site, even after adjusting for individual and household level factors.

376 **5.7. *Schistosoma mansoni* and other detected infections**

377 The prevalence of any *S. mansoni* infection across the survey population was 1.7% (0.5% in
378 PSAC, 0.7% in SAC and 2.6% in adults), resulting in an age and cluster-population weighted
379 prevalence of 1.6% (95% CI 1.3-2.0%). Infection with *S. mansoni* was detected in 32 of the
380 40 study clusters, with similar infection prevalence observed in males (1.5%) and females
381 (1.7%). Other infections detected were *Enterobius vermicularis* (0.6%, n=37, in 25 clusters)
382 and *Hymenolepis nana* (<0.1%, n=4, observed in 3 clusters).

383 **6. DISCUSSION**

384 This community-based survey of more than 6,000 individuals in southern Malawi provides a
385 detailed picture of contemporary demographics and community-level epidemiology of STH in
386 2018, in a context of MDA with albendazole delivered consistently to targeted demographic
387 groups through multiple platforms for more than a decade. The findings presented here are
388 likely to be broadly comparable to settings with similar socio-demographic and environmental
389 profiles that have successfully implemented and sustained routinely preventive chemotherapy
390 through school-based deworming and other routine delivery platforms.

391 The observed prevalence of STH infection in pre-school (aged 1-4 years) and school-age
392 (aged 5-14 years) children was low (1.4% and 4.2% respectively) consisting of predominately
393 hookworm infection (>99%). Published literature on the prevalence of STH infection in children
394 in this region is very limited, but broadly describes a setting where STH infection, generally
395 starting from a moderate prevalence, has declined to very low levels during the past two
396 decades. School-based surveys conducted in 1999 in the north of Malawi with school-age

397 children reported a hookworm prevalence of 64% [24], with subsequent research conducted
398 between 2000-2002 describing an STH prevalence in children aged 3-14 of 3.6% and 16.5%
399 in rural and urban communities respectively in southern Malawi [25] and a national school-
400 based survey reporting an STH prevalence of 1.8% (95% CI: 0.6-3.1) [26]. Following scale-up
401 of school-based deworming, a 2008 facility-based study of severe anaemia in pre-school age
402 children reported a hookworm prevalence of 2.5% in community-based controls [27] and 2011
403 community-based survey reported an STH prevalence of 0.3-3.8% [11]. In contrast, a school-
404 based survey of 7,491 schoolchildren in the bordering Niassa province of Mozambique, where
405 school-based deworming had not been routinely conducted, reported a mean STH prevalence
406 of 51.4% (95% CI: 12.3-78.8) as recently as 2005-2007 [28].

407 The observed prevalence of 10.9% STH infection in adults (aged ≥ 15 years) in this setting
408 was substantially higher than in children, and hookworm species were most common in adults
409 (>99%). The only published literature of STH infection in Malawian adults that we are aware
410 of, a parasitological survey of 848 pregnant women aged 17-23 years conducted between
411 2002-2004 in the neighbouring Machinga district, and supports a similar pattern of declining
412 prevalence, reporting a hookworm prevalence of 14.4% with 95% of infections being low
413 intensity, and few (<0.5%) non-hookworm infections [29]. While the increased prevalence of
414 hookworm infection with age has long been recognised [30] our survey confirms the result of
415 an age-structured cross-sectional survey conducted in Kenya [13], a setting that has similarly
416 delivered wide-scale MDA for STH. In addition to more limited surveys conducted in Kenya
417 [31, 32], these results confirm that whilst deworming programmes may have made a
418 substantial impact on hookworm infection prevalence in children, adults continue to remain at
419 increased risk of infection and importantly, as a reservoir of STH infection in these
420 communities.

421 As morbidity attributable to infection with STH, including the clinical sequelae of iron-deficiency
422 anaemia, is most prominent when worm burden is relatively high, global targets for STH
423 control continue to prioritise reduction in morbidity rather than infection [33]. As no MHI STH

424 infections were detected in this survey, our results demonstrate that this region of Malawi has
425 already achieved the WHO 2030 milestone of elimination of STH as a public health problem
426 (<2% of MHI STH infection) [34]. This finding is notable as it has been achieved despite the
427 higher prevalence of STH observed in adult males, who have not been routinely targeted with
428 anthelmintic treatment following the cessation of MDA for LF. However, in this setting of high
429 vulnerability to many other risk factors for anaemia, including chronic nutritional deficiencies
430 and the consequences of other infectious diseases, the prevalence of moderate or severe
431 anaemia remains almost twice the national average, with one in eight women aged 15-49
432 having moderate or severe anaemia [7]. As such, while approaches to increase treatment
433 coverage of adults in this setting would likely be an effective approach to further reducing the
434 prevalence of STH, in this respect there may be limited clinical benefit.

435 Across a range of settings, access to sanitation is strongly associated with reduced risk of
436 STH transmission [35]. Despite this, sanitation has been highlighted as an inadequately
437 emphasised component of many STH control strategies [36-38]. The prioritisation of routine
438 deworming over improvements in sanitation is in part justified on the rationale that the
439 resources required to do so are rarely available in settings where STH are endemic [39]. In
440 this survey, we observe a high level of reported access to improved sanitation at home,
441 confirming evidence that access to sanitation has continued to grow and be sustained in
442 Malawi, with 71% of households in 1995 [40] and 85% of households in 2006 [41] in Mangochi
443 district with reported access to improved sanitation. Given the high levels of coverage, it is
444 perhaps unsurprising that we did not observe an association between access to sanitation and
445 STH infection, and it is highly likely that this sustained level of sanitation has played a major
446 role in sustaining the reductions in STH infection achieved through routine deworming.

447 In this setting of predominantly agricultural livelihoods, we suggest that access to sanitation
448 when away from the household may play a relatively important role in continuing to drive
449 transmission in this setting. In contrast to household-level access, 23% of participants reported
450 open defecation when at work, and moderate evidence of lower levels of infection in those

451 from households whose primary occupation is skilled where access to sanitation would
452 plausibly be higher. Research from other rural settings in SSA has observed no protective
453 association of community-level sanitation on hookworm infection even at high levels [42, 43].
454 Forthcoming research will explore how risk of STH infection changes relative to access to
455 sanitation at the local and school levels in this setting.

456 This survey confirms a number of other well-established risk factors for STH infection and
457 intensity, including the strong relationship between STH and poverty (as defined by asset and
458 household-materials based index). This observation underlines the persistent nature of NTDs
459 to disproportionately affect the most marginalised and vulnerable members of society.
460 Interestingly, we observe a persistent protective effect of higher levels of household education
461 and urbanisation, suggesting these may act along pathways independent of wealth to reduce
462 the risk of STH infection. Furthermore, we observe the protective effect of current school
463 enrolment, likely demonstrating the success of school-based deworming in this setting, and
464 we confirm known environmental risk factors for STH including household crowding, soil sand
465 fraction and aridity.

466 While this survey was able to overcome the biases inherent in many community-representative
467 surveys through the use of a recent population census as a sampling frame, a major limitation
468 of the survey is bias in the demographic profile of the final enrolled sample when compared to
469 the census. The final sample consisted of disproportionately more (adult) women, due to the
470 replacement of male participants who were either unavailable or refused to participate in the
471 survey, and subsequent skew towards those more likely to be present at the time visit. In
472 addition, we also note that the final sample is under representative of non-migrants and
473 children not attending school, likely due in part to the survey characteristic of visiting
474 household during the daytime.

475 While the Kato-Katz method remains the primary diagnostic tool for detection of STH eggs in
476 both routine monitoring and large-scale research studies, the relatively poor sensitivity of the
477 method, particularly in settings of low prevalence, is widely recognised as a limitation of the

478 method [44] although multiple slides or consecutive stool samples have been demonstrated
479 to improve sensitivity [45, 46]. Despite these limitations, novel molecular approaches, such as
480 the use of quantitative polymerase chain reaction (qPCR) generally remain inappropriate for
481 the monitoring or evaluation of STH control interventions [47], with recent evidence suggesting
482 that qPCR is only more sensitive than Kato-katz for infections of very low intensity [48]. On
483 this basis, Kato-katz remains sufficiently sensitive to assess the broad distribution of STH
484 infections, and their associated risk factors, in settings with active ongoing STH transmission
485 such as Malawi.

486 In conclusion, the results of this survey demonstrate that concerted efforts to control soil-
487 transmitted helminths through MDA with albendazole, facilitated by sustained access to
488 sanitation, has successfully achieved what was intended - reducing the profile of this disease
489 to a very low prevalence and intensity in those at greatest risk of morbidity - while transmission
490 continues at low levels amongst adults and marginalised communities. This raises a
491 challenging decision for policy makers and researchers alike: whether control programmes
492 should continue to try and sustain the elimination of STH morbidity, or pivot towards expanding
493 coverage to the entire community with the target of elimination of STH infection [49]. Building
494 on evidence from Kenya in which community-wide MDA was more effective and feasible
495 approach to reducing the prevalence and intensity of hookworm relative to school-based
496 deworming over the course of two years [50, 51], the Deworm3 trial [15, 52] which this survey
497 sits within, aims to address whether such a strategy could be effective, feasible and cost-
498 effective [53].

499 **7. ACKNOWLEDGEMENTS**

500 We sincerely thank all those who contributed to this survey, with special recognition of the
501 individual contributions of Chikondi Chikotichalera, Fraser Chisale and Cidreck Nkomela.

502 We thank all community members who participated in this survey, and we gratefully
503 acknowledge the support of the Traditional Authorities of Bwananyambi, Chowe, Jalasi and
504 Katuli, and the Area Development Committees of Bwanayambi, Majuni, Malombola and
505 Mandimba; with whose permission this survey was conducted.

506 We thank the team of field enumerators and laboratory technicians who contributed directly to
507 data collection; and the drivers, health surveillance assistants, laboratory cleaners and village
508 volunteers who tirelessly supported them.

509 We thank those at Mangochi DHO (Dr Henry Chibowa, Dr Kondwani Mamba and Dr Wayne
510 Peno) and Namwera zone (Alinafe Hauya, Cornelius Kunkeyani, Chifundo Manong'a, Atusaye
511 Mbisa and Francis Mwanoka) for their support and supervision during this survey.

512 Lastly, we thank those at Blantyre Institute for Community Outreach (Nellie Chatsika, David
513 Chinyanya, Roselyn Hara, Florence Kalua, Wongani Lungu, Lifa Mandala, Limbani Mitengo,
514 Maghanoghano Mpata, Christopher Phiri, Ranneck Singano and Rose Wilson), the College of
515 Medicine (Dr. Sarah Burr and Harry Meleke), Kenya Medical Research Institute (Paul Gichuki
516 and Anne Njoka), LSHTM (Jessie Hammon, John Hart and Eleanor Martins) and Natural
517 History Museum (Leanne Doran, Iain Gardiner, Dr Tim Littlewood and Elodie Yard) who
518 contributed to the planning, coordination, and implementation of this survey.

519

520 TABLE 1: Individual and household-level characteristics of (i) community (census) survey
521 participants registered in delineated study clusters in total, disaggregated by socio-economic
522 status, and disaggregated by sex; and (ii) parasitological survey participants in total; in
523 Namwera, Mangochi district, Malawi in 2018.

| | Community (census) survey participants registered in delineated study clusters; % (n) | | | | | Parasitological survey participants; % (n) |
|--|--|------------------|---------------------|--------------|--------------|---|
| | Total: | Q1: (Poorest) | Q5: (Least poor) | Male | Female | Total: |
| Individual demographic profile: | | | | | | |
| Age group (years): | | | | | | |
| <1 year | 3.6 (4368) | 3.9 (863) | 3 (823) | 3.7 (2121) | 3.5 (2247) | - |
| 1-4 years | 14.3 (17455) | 16 (3520) | 12 (3265) | 14.9 (8577) | 13.8 (8876) | 21.8 (1329) |
| 5-14 years | 30.9 (37652) | 30.6 (6728) | 32 (8732) | 32.7 (18817) | 29.3 (18832) | 25.3 (1541) |
| ≥15 years | 51 (62161) | 49.4 (10852) | 52.9 (14422) | 48.4 (27838) | 53.4 (34323) | 52.9 (3228) |
| Age unknown | 0.2 (183) | 0.1 (22) | 0.1 (36) | 0.2 (128) | 0.1 (55) | 0.07 (4) |
| Individual stayed in household the majority of days in 6 months prior to census survey | 96.2 (117189) | 97.3 (21386) | 95.6 (26071) | 94.6 (54400) | 97.6 (62784) | 98.4 (6007) |
| Individual slept at household night prior to census survey | 94.5 (115078) | 95.3 (20956) | 93.6 (25519) | 90.9 (52228) | 97.7 (62845) | 98.2 (5989) |
| Age specific enrolment rate: | | | | | | |
| Age 5 years (OA 1 year before Std 1) | 68.4 (2981) | 60.4 (530) | 77.3 (686) | 66.7 (1437) | 70.1 (1544) | 64.2 (154) |
| Age 8 years (OA Std 2/3) | 94 (3444) | 90.9 (628) | 96.6 (791) | 93.7 (1670) | 94.2 (1773) | 96.8 (152) |
| Age 11 years (OA Std 5/6) | 96 (3024) | 94.1 (481) | 97.8 (750) | 95.7 (1541) | 96.4 (1483) | 94 (126) |
| Age 14 years (OA Std 8) | 89.1 (2774) | 84.8 (441) | 92.2 (707) | 90.6 (1449) | 87.4 (1325) | 91.3 (94) |
| Highest level of education (age≥15 years) | | | | | | |
| No formal education | 34.9 (21350) | 46.2 (4920) | 23.7 (3382) | 25.2 (6825) | 42.6 (14525) | 37.3 (1197) |
| Primary incomplete | 49.1 (30083) | 46.5 (4947) | 45.7 (6504) | 53.1 (14395) | 46 (15688) | 50.4 (1620) |
| Primary complete or higher | 13 (7954) | 4.6 (484) | 26.8 (3817) | 16 (4351) | 10.6 (3603) | 10.3 (332) |
| Highest education level unknown | 3 (1862) | 2.7 (291) | 3.8 (541) | 5.7 (1550) | 0.9 (312) | 2 (64) |
| Household demographic profile: | | | | | | |
| Median household size (range) | 4 (1-17) | 4 (1-14) | 5 (1-16) | - | - | - |
| Household stayed less than 5 years | 48.0 (13326) | 39.7 (2204) | 50.9 (2780) | - | - | 43.0 (1914) |
| Primary language spoken is Chiyao | 95.3 (26449) | 99.1 (5499) | 86.5 (4726) | - | - | 95.9 (4264) |
| Primary religion practiced is Islam | 94.5 (26211) | 98.0 (5438) | 86.5 (4726) | - | - | 94.9 (4219) |
| Household materials, assets & utilities: | | | | | | |
| Dwelling has floor of natural material | 79.6 (22077) | 99.6 (5530) | 40.8 (2229) | - | - | 81.0 (3604) |
| Household has any livestock | 35.1 (9729) | 21.3 (1181) | 51.1 (2789) | - | - | 39.8 (1768) |
| Household has electricity | 4.8 (1327) | 0 (0) | 19.0 (1040) | - | - | 3.5 (157) |
| Household water and sanitation: | | | | | | |
| Household toilet facility: | | | | | | |
| Basic | 68.0 (18882) | 58.7 (3260) | 78.1 (4263) | - | - | 72.3 (3213) |
| Limited | 25.1 (6970) | 30.5 (1691) | 19.4 (1060) | - | - | 21.5 (955) |
| Unimproved | 4.3 (1193) | 5.9 (327) | 2.1 (113) | - | - | 4.5 (199) |

| | | | | | | |
|--------------------------------|--------------|-------------|-------------|---|---|-------------|
| Open defecation | 2.5 (705) | 4.9 (272) | 0.5 (25) | - | - | 1.8 (80) |
| Household water source: | | | | | | |
| Basic | 74.9 (20795) | 72.1 (4000) | 77.9 (4256) | - | - | 72.4 (3221) |
| Limited | 23.4 (6483) | 26.0 (1444) | 21.0 (1149) | - | - | 24.2 (1077) |
| Unimproved | 1.5 (411) | 1.7 (93) | 0.9 (47) | - | - | 1.3 (58) |
| Surface water | 0.2 (61) | 0.2 (13) | 0.2 (9) | - | - | 0.2 (7) |
| Unknown | - | - | - | - | - | 1.9 (84) |

524

525 Abbreviations: OA Std=Official age for standard (grade level).

526 TABLE 2: Predictors of presence of hookworm infection amongst preschool-age children,
527 school-age children, and adults in Namwera, Mangochi district, Malawi in 2018.

| Characteristic | | % (N) of participants ¹ | % (n) of participants with hookworm infection | Univariable analysis ² | | Multivariable analysis ^{2,3} | |
|--|------------|------------------------------------|---|-----------------------------------|---------|---------------------------------------|---------|
| | | | | OR (95% CI) | P value | Adjusted OR (95% CI) | P value |
| Individual factors | | | | | | | |
| Sex: | | | | | | | |
| Male | | 37.1 (2263) | 7.7 (175) | - | - | - | - |
| Female | | 62.9 (3839) | 6.8 (261) | - | - | - | - |
| Age group: | | | | | | | |
| 1-4 years | | 21.8 (1329) | 1.4 (18) | - | - | - | - |
| 5-14 years | | 25.3 (1541) | 4.2 (65) | - | - | - | - |
| ≥15 years | | 52.9 (3228) | 10.9 (352) | - | - | - | - |
| Effect of age by sex: | | | | | | | |
| Male | 1-4 years | 28.3 (640) | 1.1 (7) | 1 | - | 1 | - |
| | 5-14 years | 33.3 (753) | 4.7 (35) | 5.55 (2.23-13.81) | - | 9.21 (3.48-24.35) | - |
| | ≥15 years | 38.4 (870) | 15.3 (133) | 28.46 (11.16-72.56) | <0.001 | 28.18 (11.06-71.76) | <0.001 |
| Female | 1-4 years | 18.0 (689) | 1.6 (11) | 1 | - | 1 | - |
| | 5-14 years | 20.5 (788) | 3.8 (30) | 2.74 (1.24-6.03) | - | 4.58 (1.95-10.75) | - |
| | ≥15 years | 61.5 (2362) | 9.3 (220) | 8.61 (4.13-17.95) | <0.001 | 7.62 (3.66-15.84) | <0.001 |
| Effect of sex by age: | | | | | | | |
| 1-4 years | Male | 48.2 (640) | 1.1 (7) | 1 | - | 1 | - |
| | Female | 51.8 (689) | 1.6 (11) | 1.57 (0.56-4.42) | 0.40 | 1.51 (0.53-4.26) | 0.4 |
| 5-14 years | Male | 48.9 (753) | 4.7 (35) | 1 | - | 1 | - |
| | Female | 51.1 (788) | 3.8 (30) | 0.77 (0.43-1.39) | 0.39 | 0.75 (0.42-1.36) | 0.3 |
| ≥15 years | Male | 26.9 (870) | 15.3 (133) | 1 | - | 1 | - |
| | Female | 73.1 (2362) | 9.3 (220) | 0.47 (0.34-0.65) | <0.001 | 0.41 (0.29-0.57) | <0.001 |
| Currently in education: | | | | | | | |
| No | | 65 (3965) | 8.9 (353) | 1 | - | 1 | - |
| Yes | | 35 (2137) | 3.9 (83) | 0.34 (0.24-0.48) | <0.001 | 0.44 (0.29-0.68) | <0.001 |
| Dewormed within past 12 months: | | | | | | | |
| No | | 49.3 (2928) | 8.9 (261) | 1 | - | - | - |
| Yes | | 50.7 (3011) | 5.4 (162) | 0.49 (0.37-0.66) | <0.001 | - | - |
| Household factors | | | | | | | |
| Access to sanitation: | | | | | | | |
| Open defecation | | 1.7 (104) | 7.7 (8) | 1 | - | - | - |
| Unimproved | | 273 (4.5) | 7 (19) | 1.07 (0.36-3.19) | - | - | - |
| Limited | | 1240 (20.3) | 7.7 (95) | 0.94 (0.36-2.43) | - | - | - |
| Basic | | 4485 (73.5) | 7 (314) | 0.73 (0.29-1.85) | 0.30 | - | - |
| Sanitation facility is shared: | | | | | | | |
| No | | 78.7 (4805) | 7 (338) | 1 | - | - | - |
| Yes | | 21.3 (1297) | 7.6 (98) | 1.24 (0.92-1.68) | 0.16 | - | - |
| Access to handwashing facility: | | | | | | | |
| No facility | | 25.6 (1520) | 6.4 (97) | 1 | - | - | - |

| | | | | | | |
|---|-------------|------------|---------------------|--------|----------------------|-------|
| Limited | 69.0 (4092) | 7.6 (312) | 1.23 (0.90-1.69) | - | - | - |
| Basic | 5.3 (317) | 4.1 (13) | 0.61 (0.29-1.28) | 0.08 | - | - |
| Household flooring: | | | | | | |
| Natural materials | 81.1 (4940) | 383 (7.8) | 1 | - | - | - |
| Man-made materials | 18.9 (1155) | 51 (4.4) | 0.59 (0.41-0.86) | - | - | - |
| Socio-economic status: | | | | | | |
| Poorest (Q1) | 18.7 (1138) | 11.2 (127) | 1 | - | 1 | - |
| Q2 | 20.2 (1232) | 7.8 (96) | 0.64 (0.44-0.93) | - | 0.63 (0.43-0.92) | - |
| Q3 | 18.8 (1149) | 6.2 (71) | 0.54 (0.36-0.81) | - | 0.55 (0.37-0.84) | - |
| Q4 | 21 (1282) | 6.9 (88) | 0.61 (0.42-0.89) | - | 0.60 (0.40-0.89) | - |
| Least poor (Q5) | 21.3 (1301) | 4.2 (54) | 0.34 (0.22-0.53) | <0.001 | 0.37 (0.23-0.59) | 0.001 |
| Source of household income: | | | | | | |
| <i>Ganyu</i> ⁴ only | 38.4 (2170) | 8 (174) | 0.93 (0.58-1.51) | - | - | - |
| Farming | 33.5 (1893) | 7.7 (146) | 1.02 (0.62-1.67) | - | - | - |
| Other unskilled | 24.3 (1376) | 5.3 (73) | 0.60 (0.35-1.02) | - | - | - |
| Skilled | 3.8 (215) | 2.8 (6) | 0.36 (0.13-1.02) | 0.02 | - | - |
| Highest education level of any adult household member: | | | | | | |
| No education | 25.0 (1515) | 9.2 (1515) | 1 | - | 1 | - |
| Primary incomplete | 56.5 (3429) | 7.2 (3429) | 0.71 (0.53-0.94) | - | 0.75 (0.56-1.01) | - |
| Primary complete or higher | 18.6 (1128) | 4.3 (49) | 0.43 (0.28-0.67) | <0.001 | 0.50 (0.32-0.78) | 0.009 |
| Household size: | | | | | | |
| # household members | - | - | 0.89 (0.83-0.94) | <0.001 | - | - |
| Environmental factors | | | | | | |
| Aridity: | | | | | | |
| Semi-arid | 37 (2259) | 4.9 (111) | 1 | - | - | - |
| Dry sub-humid | 63 (3842) | 8.5 (325) | 1.78 (1.15-2.75) | 0.009 | - | - |
| Elevation: | | | | | | |
| Mean, SD | - | - | 1.005 (1.001-1.007) | 0.001 | - | - |
| Sand fraction: | | | | | | |
| Mean, SD | - | - | 0.96 (0.93-0.98) | 0.004 | 0.94 (0.92-0.98) | 0.001 |
| NDVI (Greenness proxy): | | | | | | |
| Mean, SD | - | - | 21.80 (0.51-929.70) | 0.11 | 81.63 (1.65-4027.05) | 0.027 |
| Urbanisation | | | | | | |
| Rural | 7.9 (482) | 8.7 (42) | 1 | - | - | - |
| Peri-urban | 55 (3355) | 8.2 (274) | 0.81 (0.51-1.29) | - | - | - |
| Urban | 37 (2265) | 5.3 (120) | 0.48 (0.28-0.81) | 0.003 | - | - |

528

529 ¹6102 observations with Kato-katz result included. All variables have complete data, with the exception of age group (n=6098),
530 dewormed within past 12 months (n=5939), access to handwashing facility (n=5929), household flooring (n=6095), source of
531 household income (n=5654) and highest education level of any adult household member (n=6072).

532 ²Mixed effects logistic regression (MELR) accounting for clustering at the household, village and cluster level.

533 ³6070 observations included in fully adjusted MELR model.

534 ⁴Casual off-own-farm labour (e.g. weeding or ridging).

535 Acronyms: CI=Confidence interval, EPG=Eggs per gram, OR=Odds ratio, SD=Standard deviation.

536 TABLE 3: Predictors of intensity of hookworm infection amongst preschool-age children,
537 school-age children, and adults in Namwera, Mangochi district, Malawi in 2018.

| Characteristic | Mean hookworm EPG (SD) ¹ | Univariable analysis ² | | Multivariable analysis ^{2,3} | |
|--|-------------------------------------|-----------------------------------|---------|---------------------------------------|---------|
| | | IRR (95% CI) | P value | Multivariable IRR (95% CI) | P value |
| Individual factors | | | | | |
| Sex: | | | | | |
| Male | 32 (345) | 1 | - | - | - |
| Female | 38 (518) | 1.04 (0.62-1.76) | 0.87 | - | - |
| Age group: | | | | | |
| <1 year | 16 (548) | 1 | - | 1 | - |
| 1-4 years | 14 (180) | 11.21 (4.35-28.90) | - | 37.98 (12.21-118.15) | - |
| 5-14 years | 54 (512) | 148.53 (60.23-366.29) | <0.001 | 105.20 (41.88-264.30) | <0.001 |
| Currently in education: | | | | | |
| No | 50 (561) | 1 | - | 1 | - |
| Yes | 10 (152) | 0.12 (0.06-0.21) | <0.001 | 0.22 (0.09-0.51) | <0.001 |
| Dewormed within past 12 months: | | | | | |
| No | 48 (513) | 1 | - | 1 | - |
| Yes | 23 (411) | 0.27 (0.15-0.46) | <0.001 | 0.48 (0.28-0.83) | 0.008 |
| Household factors | | | | | |
| Access to sanitation: | | | | | |
| Open defecation | 30 (197) | 1 | - | - | - |
| Unimproved | 11 (73) | 0.71 (0.08-6.60) | - | - | - |
| Limited | 56 (769) | 1.13 (0.17-7.55) | - | - | - |
| Basic | 32 (354) | 0.67 (0.10-4.29) | 0.44 | - | - |
| Sanitation facility is shared: | | | | | |
| No | 31 (343) | 1 | - | - | - |
| Yes | 54 (751) | 1.58 (0.85-2.94) | 0.15 | - | - |
| Access to handwashing facility: | | | | | |
| No facility | 39 (379) | 1 | - | - | - |
| Limited | 33 (468) | 0.79 (0.42-1.48) | - | - | - |
| Basic | 51 (720) | 0.41 (0.10-1.59) | 0.42 | - | - |
| Household flooring: | | | | | |
| Natural materials | 38 (456) | 1 | - | - | - |
| Man-made materials | 26 (484) | 0.50 (0.24-1.03) | - | - | - |
| Socio-economic status: | | | | | |
| Poorest (Q1) | 72 (782) | 1 | - | 1 | - |
| Q2 | 30 (245) | 0.47 (0.22-1.02) | - | 0.39 (0.18-0.84) | - |
| Q3 | 33 (432) | 0.51 (0.22-1.18) | - | 0.41 (0.18-0.93) | - |
| Q4 | 37 (432) | 0.57 (0.25-1.27) | - | 0.39 (0.18-0.84) | - |
| Least poor (Q5) | 10 (77) | 0.19 (0.08-0.45) | 0.005 | 0.16 (0.07-0.37) | 0.001 |
| Source of household income: | | | | | |
| Ganyu ⁴ only | 50 (604) | 1.07 (0.39-2.96) | - | - | - |
| Farming | 33 (329) | 1.15 (0.41-3.20) | - | - | - |
| Other unskilled | 27 (329) | 0.42 (0.14-1.26) | - | - | - |

| | | | | | |
|---|----------|---------------------|-------|------------------|--------|
| Skilled | 27 (461) | 0.19 (0.03-1.20) | 0.02 | - | - |
| Highest education level of any adult household member: | | | | | |
| No education | 45 (416) | 1 | - | 1 | - |
| Primary incomplete | 34 (467) | 0.48 (0.26-0.87) | - | 0.61 (0.34-1.09) | - |
| Primary complete or higher | 29 (507) | 0.26 (0.11-0.60) | 0.005 | 0.26 (0.11-0.60) | 0.006 |
| Household size: | | | | | |
| # household members | - | 0.83 (0.74-0.92) | 0.001 | - | - |
| Environmental factors | | | | | |
| Aridity: | | | | | |
| Semi-arid | 20 (300) | 1 | - | - | - |
| Dry sub-humid | 45 (534) | 2.52 (1.09-5.82) | 0.03 | - | - |
| Elevation: | | | | | |
| Mean, SD | - | 1.007 (1.001-1.011) | 0.014 | - | - |
| Sand fraction: | | | | | |
| Mean, SD | - | 0.91 (0.86-0.97) | 0.002 | 0.89 (0.85-0.94) | <0.001 |
| Population density within 1km | | | | | |
| <50 | 7 (54) | 1 | - | - | - |
| 50-249 | 41 (456) | 7.22 (1.47-35.38) | - | - | - |
| >249 | 33 (475) | 4.44 (0.90-21.98) | 0.03 | - | - |

538

539 ¹6102 observations with Kato-katz result included. All variables have complete data, with the exception of age group (n=6098),
540 dewormed within past 12 months (n=5939), access to handwashing facility (n=5929), household flooring (n=6095), source of
541 household income (n=5654) and highest education level of any adult household member (n=6072).

542 ²Mixed effects negative binomial regression of egg counts, with quantity of stool assessed per sample included as an offset,
543 accounting for clustering at the household, village and cluster level.

544 ³5885 observations included in fully adjusted mixed effects negative binomial regression model.

545 ⁴Casual off-own-farm labour (e.g. weeding or ridging).

546 Acronyms: CI=Confidence interval, EPG=Eggs per gram, IRR= Incidence rate ratio, SD=Standard deviation.

547 TABLE S1: Individual and household-level characteristics of parasitological survey
548 participants in total, disaggregated by socio-economic status, and disaggregated by sex; in
549 Namwera, Mangochi district, Malawi in 2018.

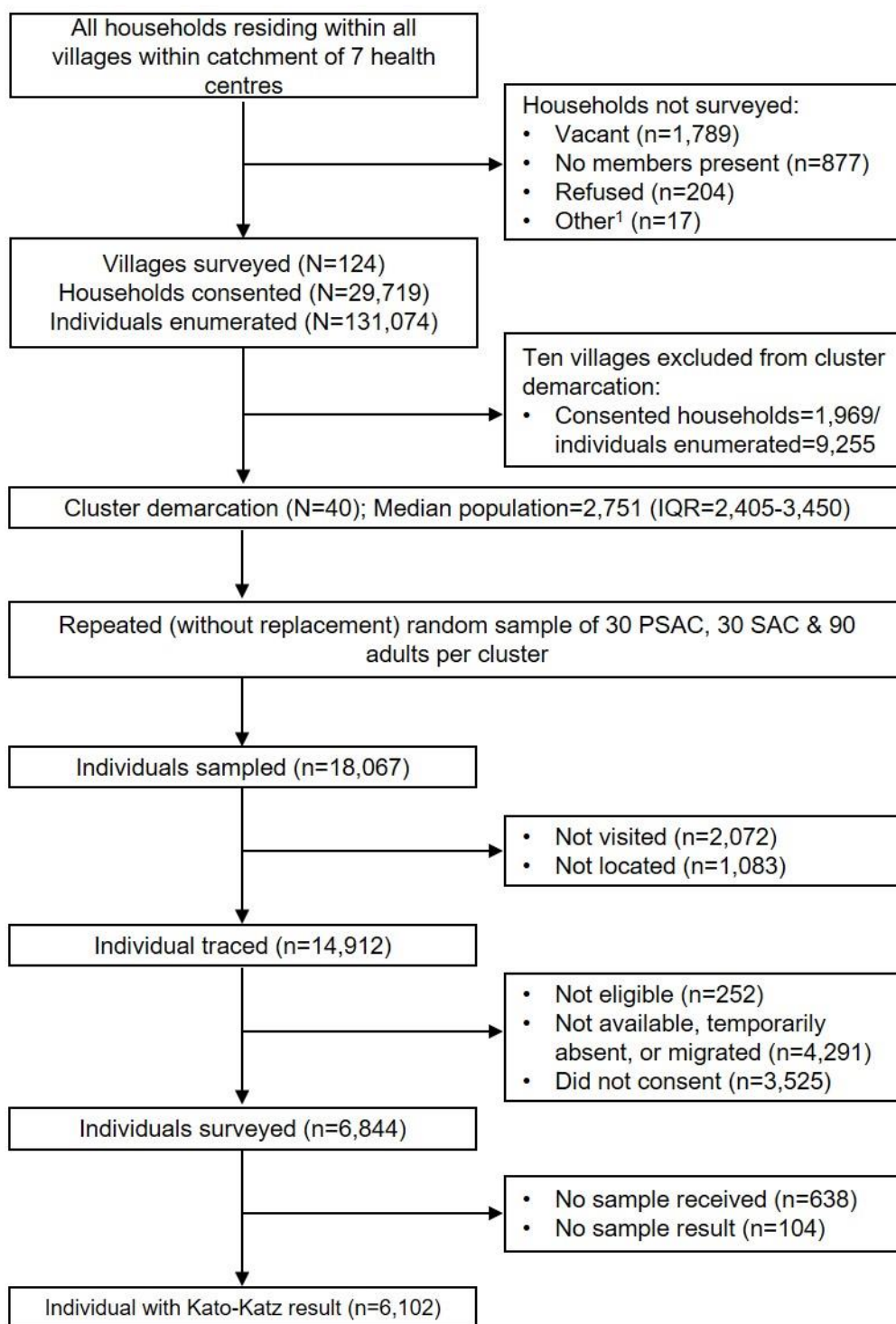
| | Parasitological survey participants; % (n) | | | | |
|--|--|------------------|---------------------|-------------|-------------|
| | Total: | Q1: (Poorest) | Q5: (Least poor) | Male | Female |
| Demographic profile: | | | | | |
| Age group (years): | | | | | |
| <1 year | 21.8 (1329) | 23.7 (291) | 19.9 (237) | 28.3 (640) | 18 (689) |
| 1-4 years | 25.3 (1541) | 24.5 (300) | 27 (322) | 33.3 (753) | 20.5 (788) |
| 5-14 years | 52.9 (3228) | 51.8 (635) | 53.2 (635) | 38.3 (867) | 61.5 (2361) |
| Age unknown | 0.07 (4) | 0 (0) | 0 (0) | 0.13 (3) | 0.03 (1) |
| Individual stayed in household the majority of days in 6 months prior to census survey | 98.4 (6007) | 99.1 (1215) | 98.2 (1173) | 97.7 (2211) | 98.9 (3796) |
| Individual slept at household night prior to census survey | 98.2 (5989) | 98.8 (1211) | 97.2 (1161) | 96.4 (2181) | 99.2 (5989) |
| Age specific enrolment rate: | | | | | |
| Age 5 years (OA 1 year before Std 1) | 64.2 (154) | 55 (33) | 88.6 (39) | 70.1 (82) | 58.5 (72) |
| Age 8 years (OA Std 2/3) | 96.8 (152) | 89.7 (26) | 97.3 (36) | 95.4 (83) | 98.6 (69) |
| Age 11 years (OA Std 5/6) | 94 (126) | 88 (22) | 100 (26) | 97.1 (68) | 90.6 (58) |
| Age 14 years (OA Std 8) | 91.3 (94) | 84.2 (16) | 92.3 (24) | 94.2 (49) | 88.2 (45) |
| Highest level of education (age≥15 years) | | | | | |
| No formal education | 37.3 (1197) | 49.7 (315) | 25.2 (159) | 23.3 (201) | 42.4 (996) |
| Primary incomplete | 50.4 (1620) | 43.7 (277) | 51.1 (322) | 58.4 (504) | 47.5 (1116) |
| Primary complete or higher | 10.3 (332) | 4.9 (31) | 20.8 (131) | 13.7 (118) | 9.1 (214) |
| Highest education level unknown | 2 (64) | 1.7 (11) | 2.9 (18) | 4.6 (40) | 1 (24) |
| Dewormed within past 12 months | 49.3 (3011) | 46.3 (567) | 52.4 (625) | 50.7 (1147) | 48.6 (1864) |
| Household demographic profile: | | | | | |
| Household stayed less than 5 years | 43.0 (1914) | 35.0 (316) | 43.9 (372) | - | - |
| Primary language spoken is Chiyao | 95.9 (4264) | 99.6 (898) | 87.5 (742) | - | - |
| Primary religion practiced is Islam | 94.9 (4219) | 99.1 (894) | 86.9 (737) | - | - |
| Household materials, assets & utilities: | | | | | |
| Dwelling has floor of natural material | 81.0 (3604) | 99.8 (900) | 47.5 (403) | - | - |
| Household has any livestock | 39.8 (1768) | 24.8 (224) | 57.4 (487) | - | - |
| Household has electricity | 3.5 (157) | 0 (0) | 15.3 (130) | - | - |
| Household water and sanitation: | | | | | |
| Household toilet facility: | | | | | |
| Basic | 72.3 (3213) | 63.9 (576) | 82.8 (702) | - | - |
| Limited | 21.5 (955) | 26.6 (240) | 14.3 (121) | - | - |
| Unimproved | 4.5 (199) | 5.7 (51) | 2.7 (23) | - | - |
| Open defecation | 1.8 (80) | 3.9 (35) | 0.2 (2) | - | - |
| Household water source: | | | | | |
| Basic | 72.4 (3221) | 67.7 (611) | 73.4 (622) | - | - |
| Limited | 24.2 (1077) | 27.6 (249) | 24.2 (205) | - | - |
| Unimproved | 1.3 (58) | 1.8 (16) | 0.8 (7) | - | - |
| Surface water | 0.2 (7) | 0.1 (1) | 0 (0) | - | - |

550

| | | | | | |
|---------|----------|----------|----------|---|---|
| Unknown | 1.9 (84) | 2.8 (25) | 1.7 (14) | - | - |
|---------|----------|----------|----------|---|---|

551 Abbreviations: OA Std=Official age for standard (grade level).

552 FIGURE 1: Study participant flow chart.



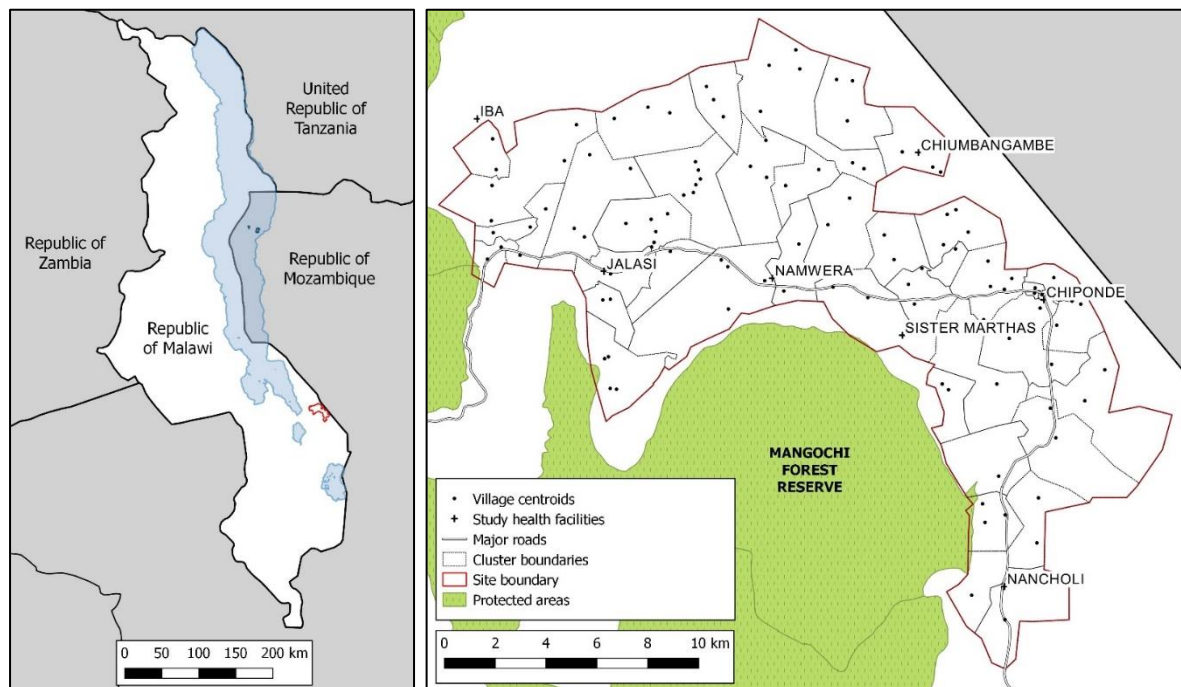
1: No adult present at household (n=9); No adult at household able to consent at that time (n=8).

fig2 values 20200722

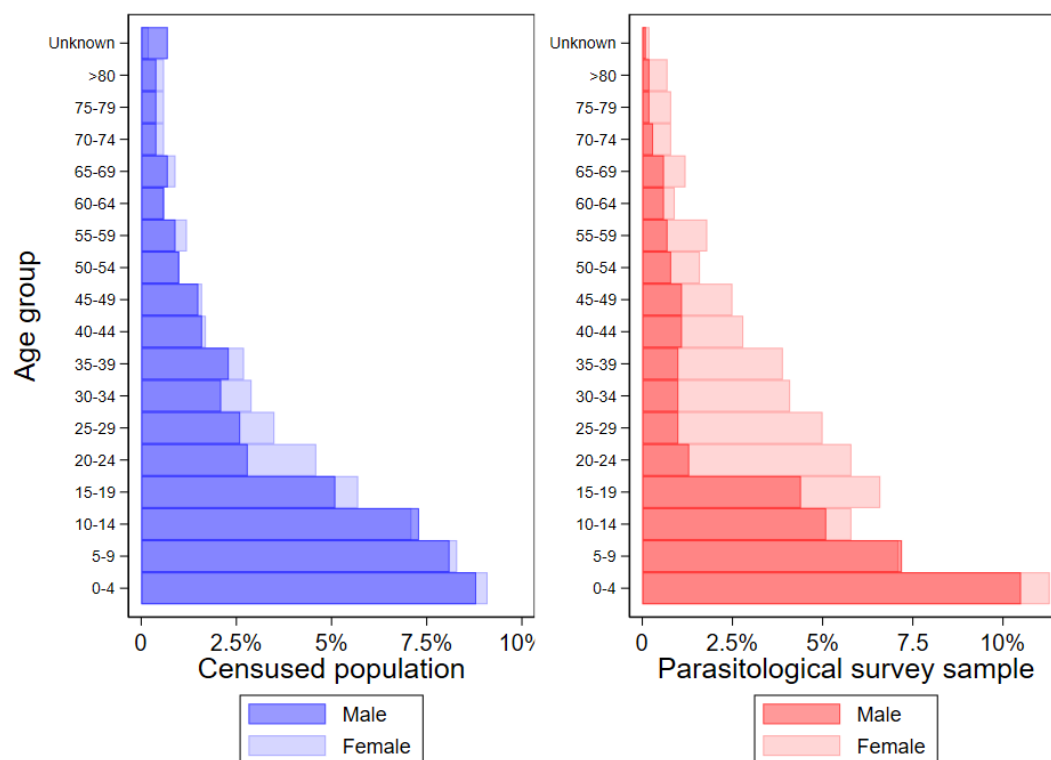
553

554

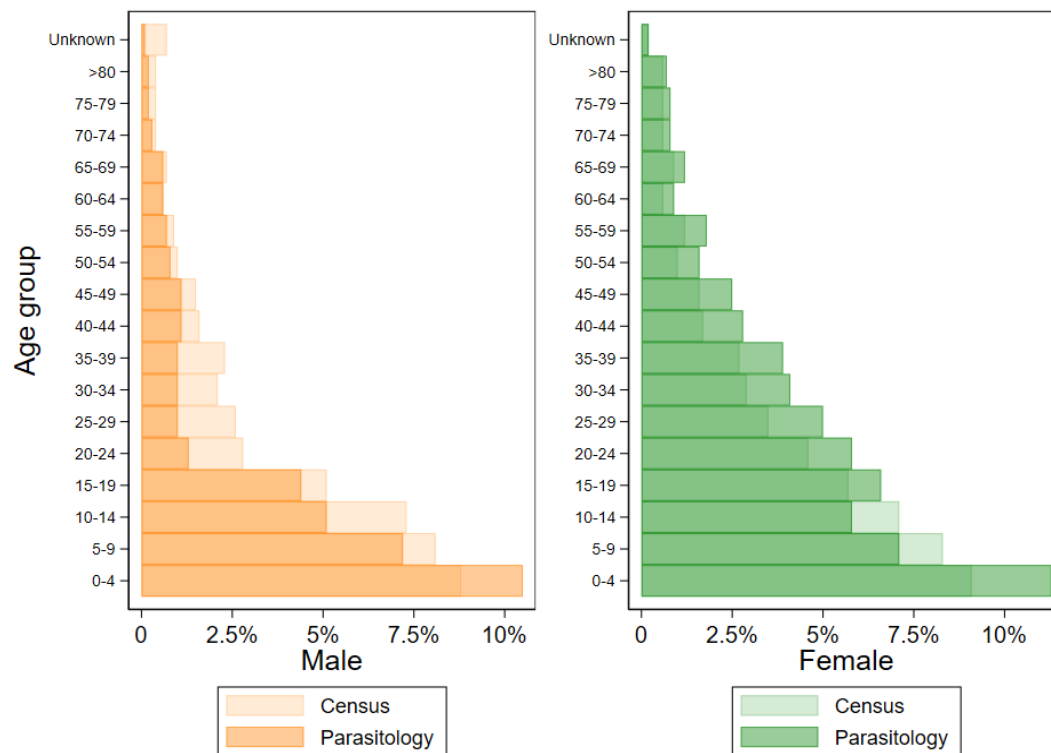
555 FIGURE 2: Location of study site within Malawi (left panel) and demarcated study clusters
556 (right panel).



557 FIGURE 3: Population structure of census and participation in parasitological survey by age
 558 group and sex.



559

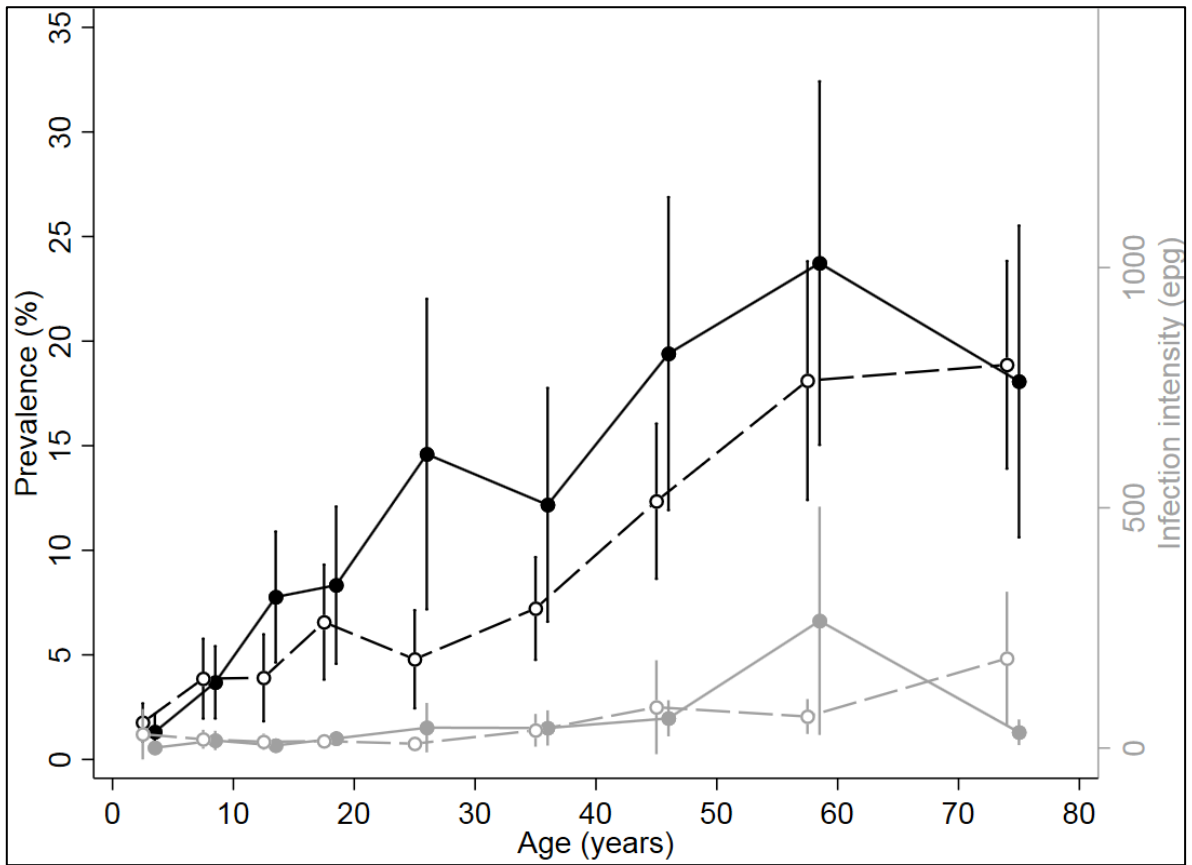


560

561 FIGURE 4: Hookworm age-sex-infection profiles.

562 Prevalence (black) and intensity (grey) of hookworm infection by age (years) and sex

563 (males=solid line and circles, females=dashed lines and empty circles)



564

565

566 REFERENCES

- 567 1. WHO/Department of Control of Neglected Tropical Diseases, *Schistosomiasis and soil*
568 *transmitted helminthiasis: numbers of people treated in 2017*. Weekly epidemiological
569 record, 2018.
- 570 2. Montresor, A., et al., *Preventive chemotherapy to control soil-transmitted helminthiasis*
571 *averted more than 500 000 DAL Ys in 2015*. Trans R Soc Trop Med Hyg, 2017. **111**(10):
572 p. 457-463.
- 573 3. UNICEF Malawi, *Every day is a Child Health Day*. 2019:
574 <https://unicefmalawi.blog/2019/01/07/every-day-is-a-child-health-day/>.
- 575 4. World Health Organisation. *Neglected tropical diseases: PCT databank - Soil-*
576 *transmitted helminthiasis*. 2020; Available from:
577 https://www.who.int/neglected_diseases/preventive_chemotherapy/sth/en/.
- 578 5. McHenga, M., R. Burger, and D. von Fintel, *Examining the impact of WHO's Focused*
579 *Antenatal Care policy on early access, underutilisation and quality of antenatal care*
580 *services in Malawi: a retrospective study*. BMC Health Services Research, 2019. **19**(1):
581 p. 295.
- 582 6. Mamba, K.C., A.S. Muula, and W. Stones, *Facility-imposed barriers to early utilization*
583 *of focused antenatal care services in Mangochi District, Malawi – a mixed methods*
584 *assessment*. BMC Pregnancy and Childbirth, 2017. **17**(1): p. 444.
- 585 7. National Statistical Office (NSO) [Malawi] and ICF, *Malawi Demographic and Health*
586 *Survey 2015-16*. 2017.
- 587 8. Save the Children, *School Health and Nutrition Manual: A guide for program planning*
588 *and implementation in Malawi*. 2010.
- 589 9. Gallo, K., et al., *Contributions of Non-Governmental Organizations to WHO Targets for*
590 *Control of Soil-Transmitted Helminthiasis*. The American Journal of Tropical Medicine
591 and Hygiene, 2013. **89**(6): p. 1186-1189.
- 592 10. Stanton, M.C., et al., *Quantifying filariasis and malaria control activities in relation to*
593 *lymphatic filariasis elimination: a multiple intervention score map (MISM) for Malawi*.
594 Tropical Medicine & International Health, 2014. **19**(2): p. 224-235.
- 595 11. Government of Malawi, *National Multiyear Strategic Plan of Action for Control of*
596 *Neglected Tropical Diseases 2015-2020*.
- 597 12. World Health Organisation, *2030 Targets for soil-transmitted helminthiasis control*
598 *programmes 2019*.
- 599 13. Halliday, K.E., et al., *Community-level epidemiology of soil-transmitted helminths in the*
600 *context of school-based deworming: Baseline results of a cluster randomised trial on*
601 *the coast of Kenya*. PLOS Neglected Tropical Diseases, 2019. **13**(8): p. e0007427.
- 602 14. Vaz Nery, S., et al., *Risk factors for infection with soil-transmitted helminths during an*
603 *integrated community level water, sanitation, and hygiene and deworming intervention*
604 *in Timor-Leste*. Int J Parasitol, 2019. **49**(5): p. 389-396.
- 605 15. Asbjornsdottir, K.H., et al., *Assessing the feasibility of interrupting the transmission of*
606 *soil-transmitted helminths through mass drug administration: The DeWorm3 cluster*
607 *randomized trial protocol*. PLoS Negl Trop Dis, 2018. **12**(1): p. e0006166.
- 608 16. Elm, E.v., et al., *Strengthening the reporting of observational studies in epidemiology*
609 *(STROBE) statement: guidelines for reporting observational studies*. BMJ, 2007.
610 **335**(7624): p. 806-808.
- 611 17. *2018 Malawi Population and Housing Census Main Report*.
- 612 18. World Health Organization, *Bench aids for the diagnosis of intestinal parasites*. 1994,
613 World Health Organization: Geneva.
- 614 19. Montresor, A., et al., *Guidelines for the evaluation of soil-transmitted helminthiasis and*
615 *schistosomiasis at community level : a guide for managers of control programmes / A.*
616 *Montresor ... [et al.]*. 1998, World Health Organization: Geneva.
- 617 20. *Prevention and control of schistosomiasis and soil-transmitted helminthiasis*. World
618 Health Organ Tech Rep Ser, 2002. **912**: p. i-vi, 1-57, back cover.

- 619 21. Hengl, T., et al., *SoilGrids250m: Global gridded soil information based on machine*
620 *learning*. PLOS ONE, 2017. **12**(2): p. e0169748.
- 621 22. United Nations Children's Fund (UNICEF) and World Health Organization (WHO),
622 *Core questions on drinking water, sanitation and hygiene for household surveys: 2018*
623 *update*. 2018.
- 624 23. United Nations Children's Fund (UNICEF) and World Health Organization (WHO),
625 *Core questions and indicators for monitoring WASH in Schools in the Sustainable*
626 *Development Goals*. 2018.
- 627 24. Randall, A.E., et al., *Patterns of helminth infection and relationship to BCG vaccination*
628 *in Karonga District, northern Malawi*. Trans R Soc Trop Med Hyg, 2002. **96**(1): p. 29-
629 33.
- 630 25. Phiri, K., et al., *Urban/rural differences in prevalence and risk factors for intestinal*
631 *helminth infection in southern Malawi*. Ann Trop Med Parasitol, 2000. **94**(4): p. 381-7.
- 632 26. Bowie, C., et al., *A national survey of the prevalence of schistosomiasis and soil*
633 *transmitted helminths in Malawi*. BMC Infect Dis, 2004. **4**: p. 49.
- 634 27. Calis, J.C.J., et al., *Severe Anemia in Malawian Children*. 2008. **358**(9): p. 888-899.
- 635 28. Augusto, G., et al., *Geographic distribution and prevalence of schistosomiasis and soil-*
636 *transmitted helminths among schoolchildren in Mozambique*. Am J Trop Med Hyg,
637 2009. **81**(5): p. 799-803.
- 638 29. Thigpen, M.C., et al., *Associations between peripheral Plasmodium falciparum malaria*
639 *parasitemia, human immunodeficiency virus, and concurrent helminthic infection*
640 *among pregnant women in Malawi*. Am J Trop Med Hyg, 2011. **84**(3): p. 379-85.
- 641 30. Bradley, M., et al., *The epidemiology and population biology of Necator americanus*
642 *infection in a rural community in Zimbabwe*. Trans R Soc Trop Med Hyg, 1992. **86**(1):
643 p. 73-6.
- 644 31. Bisanzio, D., et al., *Cross-sectional study of the burden of vector-borne and soil-*
645 *transmitted polyparasitism in rural communities of Coast Province, Kenya*. PLoS Negl
646 Trop Dis, 2014. **8**(7): p. e2992.
- 647 32. Njenga, S.M., et al., *Adult population as potential reservoir of NTD infections in rural*
648 *villages of Kwale district, Coastal Kenya: implications for preventive chemotherapy*
649 *interventions policy*. Parasit Vectors, 2011. **4**: p. 175.
- 650 33. World Health, O., *Guideline: preventive chemotherapy to control soil-transmitted*
651 *helminth infections in at-risk population groups*. 2017, Geneva: World Health
652 Organization.
- 653 34. World Health Organization, *Ending the neglect to attain the Sustainable Development*
654 *Goals: a road map for neglected tropical diseases 2021–2030 - REVISED DRAFT*
655 *2020*.
- 656 35. Ziegelbauer, K., et al., *Effect of sanitation on soil-transmitted helminth infection:*
657 *systematic review and meta-analysis*. PLoS Med, 2012. **9**(1): p. e1001162.
- 658 36. Campbell, S.J., et al., *Water, Sanitation, and Hygiene (WASH): a critical component*
659 *for sustainable soil-transmitted helminth and schistosomiasis control*. PLoS neglected
660 tropical diseases, 2014. **8**(4): p. e2651-e2651.
- 661 37. Khan, M.S., et al., *"For how long are we going to take the tablets?" Kenyan*
662 *stakeholders' views on priority investments to sustainably tackle soil-transmitted*
663 *helminths*. Soc Sci Med, 2019. **228**: p. 51-59.
- 664 38. Campbell, S.J., et al., *Tailoring Water, Sanitation, and Hygiene (WASH) Targets for*
665 *Soil-Transmitted Helminthiasis and Schistosomiasis Control*. Trends Parasitol, 2018.
666 **34**(1): p. 53-63.
- 667 39. World Health, O., *Soil-transmitted helminthiasis : eliminating as public health problem*
668 *soil-transmitted helminthiasis in children : progress report 2001-2010 and strategic*
669 *plan 2011-2020*. 2012, World Health Organization: Geneva.
- 670 40. Ministry of Economic Planning and Development, N.S.O., and the Centre for Social
671 Research, *Malawi Social Indicators Survey 1995: A Survey of the State of Health,*
672 *Nutrition, Water, Sanitation, and Education of Children in Malawi*. . 1996.

- 673 41. National Statistical Office and UNICEF, *Malawi Multiple Indicator Cluster Survey 2006*
674 *Final Report*. 2008.
- 675 42. Oswald, W.E., et al., *Association of community sanitation usage with soil-transmitted*
676 *helminth infections among school-aged children in Amhara Region, Ethiopia*. Parasit
677 Vectors, 2017. **10**(1): p. 91.
- 678 43. Oswald, W.E., et al., *Domains of transmission and association of community, school,*
679 *and household sanitation with soil-transmitted helminth infections among children in*
680 *coastal Kenya*. PLoS Negl Trop Dis, 2019. **13**(11): p. e0007488.
- 681 44. Benjamin-Chung, J., et al., *Comparison of multi-parallel qPCR and double-slide Kato-*
682 *Katz for detection of soil-transmitted helminth infection among children in rural*
683 *Bangladesh*. PLOS Neglected Tropical Diseases, 2020. **14**(4): p. e0008087.
- 684 45. Knopp, S., et al., *Diagnosis of soil-transmitted helminths in the era of preventive*
685 *chemotherapy: effect of multiple stool sampling and use of different diagnostic*
686 *techniques*. PLoS Negl Trop Dis, 2008. **2**(11): p. e331.
- 687 46. Booth, M., et al., *The influence of sampling effort and the performance of the Kato-*
688 *Katz technique in diagnosing Schistosoma mansoni and hookworm co-infections in*
689 *rural Cote d'Ivoire*. Parasitology, 2003. **127**(Pt 6): p. 525-31.
- 690 47. Medley, G.F., et al., *The Role of More Sensitive Helminth Diagnostics in Mass Drug*
691 *Administration Campaigns: Elimination and Health Impacts*. Adv Parasitol, 2016. **94**:
692 p. 343-392.
- 693 48. Cools, P., et al., *Diagnostic performance of a single and duplicate Kato-Katz, Mini-*
694 *FLOTAC, FECPAKG2 and qPCR for the detection and quantification of soil-*
695 *transmitted helminths in three endemic countries*. PLOS Neglected Tropical Diseases,
696 2019. **13**(8): p. e0007446.
- 697 49. Anderson, R.M., et al., *Should the Goal for the Treatment of Soil Transmitted Helminth*
698 *(STH) Infections Be Changed from Morbidity Control in Children to Community-Wide*
699 *Transmission Elimination?* PLoS Negl Trop Dis, 2015. **9**(8): p. e0003897.
- 700 50. Pullan, R.L., et al., *Effects, equity, and cost of school-based and community-wide*
701 *treatment strategies for soil-transmitted helminths in Kenya: a cluster-randomised*
702 *controlled trial*. The Lancet, 2019. **393**(10185): p. 2039-2050.
- 703 51. Legge, H., et al., *Implementer and recipient perspectives of community-wide mass*
704 *drug administration for soil-transmitted helminths in Kwale County, Kenya*. PLoS Negl
705 Trop Dis, 2020. **14**(4): p. e0008258.
- 706 52. Means, A.R., et al., *Evaluating the sustainability, scalability, and replicability of an STH*
707 *transmission interruption intervention: The DeWorm3 implementation science protocol*.
708 PLoS Negl Trop Dis, 2018. **12**(1): p. e0005988.
- 709 53. Turner, H.C. and D.A.P. Bundy, *Programmatic implications of the TUMIKIA trial on*
710 *community-wide treatment for soil-transmitted helminths: further health economic*
711 *analyses needed before a change in policy*. Parasites & Vectors, 2020. **13**(1): p. 102.
- 712