

Supplementary Table 1

Severity Cohort	non-hospitalized	hospitalized	intubated	deceased	immunosuppressed
Total	n = 18	n = 45	n = 27	n = 10	n = 13
Demographics					
Age (median, range)	26.5 (0 - 68)	66 (0 - 91)	63 (35 - 83)	60 (39 - 77)	60 (29 - 80)
Sex (% male)	50% (9/18)	49% (22/45)	78% (21/27)	70% (7/10)	62% (8/13)
Language, primary (% non-English)	39% (7/18)	36% (16/45)	59% (16/27)	20% (2/10)	8% (1/13)
Clinical Course					
PCR-positive days [‡] (median, range)	11 (0 - 44)	17 (2 - 55)	34.5 (13 - 68)	19.5 (7 - 35)	36 (10 - 55)
Hospitalized	0% (0/18)	100% (45/45)	100% (27/27)	100% (10/10)	85% (11/13)
Days hospitalized (median, range)	-	5 (1 - 41)	43 (15 - 118)	31.5 (1 - 66)	10 (0 - 50)
Intubated	0% (0/18)	0% (0/45)	100% (27/27)	90% (9/10)	38% (5/13)
Days intubated (median, range)	-	-	26 (6 - 65)	22.5 (0 - 57)	0 (0 - 41)
ECMO	0% (0/18)	0% (0/45)	7% (2/27)	20% (2/10)	0% (0/13)
Deceased	0% (0/18)	0% (0/45)	0% (0/27)	100% (10/10)	0% (0/13)
Pre-existing medical conditions					
No significant conditions	94% (17/18)	9% (4/45)	4% (1/27)	20% (2/10)	0% (0/13)
Lung disease	0% (0/18)	31% (14/45)	11% (3/27)	10% (1/10)	0% (0/13)
Heart disease	0% (0/18)	36% (16/45)	11% (3/27)	20% (2/10)	15% (2/13)
Vascular disease	0% (0/18)	13% (6/45)	0% (0/27)	10% (1/10)	0% (0/13)
Hypertension	6% (1/18)	56% (25/45)	70% (19/27)	40% (4/10)	31% (4/13)
Diabetes mellitus	0% (0/18)	40% (18/45)	59% (16/27)	30% (3/10)	15% (2/13)
Obesity	0% (0/18)	22% (10/45)	37% (10/27)	0% (0/10)	8% (1/13)
Kidney disease	0% (0/18)	22% (10/45)	11% (3/27)	10% (1/10)	38% (5/13)
Autoimmune disease	6% (1/18)	7% (3/45)	0% (0/27)	10% (1/10)	46% (6/13)
Hematologic malignancy	0% (0/18)	0% (0/45)	0% (0/27)	0% (0/10)	23% (3/13)
Non-hematology malignancy	0% (0/18)	11% (5/45)	7% (2/27)	20% (2/10)	0% (0/13)
Solid organ transplant	0% (0/18)	0% (0/45)	0% (0/27)	10% (1/10)	46% (6/13)
HSC transplant	0% (0/18)	0% (0/45)	0% (0/27)	0% (0/10)	8% (1/13)
Immunosuppressed	0% (0/18)	0% (0/45)	0% (0/27)	0% (0/10)	100% (13/13)
Treatments received					
Hydroxychloroquine	0% (0/18)	9% (4/45)	11% (3/27)	10% (1/10)	8% (1/13)
Azithromycin	0% (0/18)	7% (3/45)	15% (4/27)	10% (1/10)	23% (3/13)
Remdesivir	0% (0/18)	7% (3/45)	15% (4/27)	10% (1/10)	38% (5/13)
Tocilizumab [†]	0% (0/18)	22% (10/45)	19% (5/27)	0% (0/10)	31% (4/13)
Anakinra	0% (0/18)	0% (0/45)	4% (1/27)	0% (0/10)	0% (0/13)
Corticosteroids	0% (0/18)	7% (3/45)	7% (2/27)	10% (1/10)	15% (2/13) ^{‡‡}

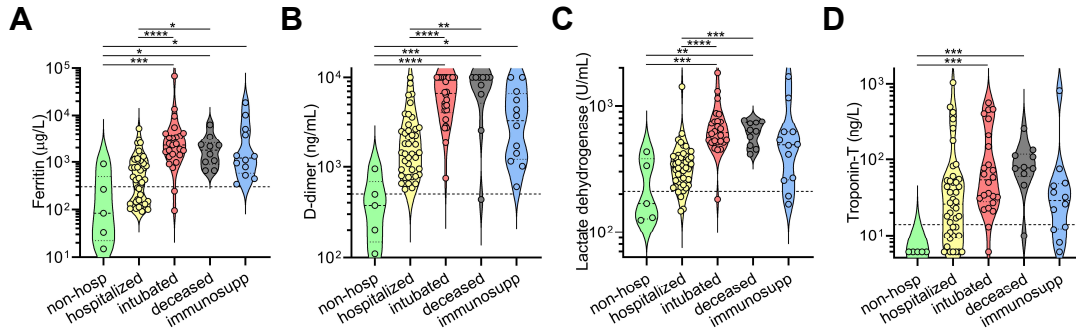
* PCR-positive days is defined as the numbers of days from the first documents PCR-positive result to the last document PCR-positive result that was followed by at least one PCR-negative result

[†] The majority of patients receiving tocilizumab were enrolled in a blinded randomized control trial with 2:1 randomization of tocilizumab to placebo, except for two patient who received it off-label

^{‡‡} In the immunosuppressed cohort, corticosteroid treatment refers to patients that newly started corticosteroids or had an increase in their baseline dose of corticosteroids (if applicable)

Supplementary Table S1: Clinical data from COVID-19 patients. Clinical data is shown for each pre-defined severity cohort.

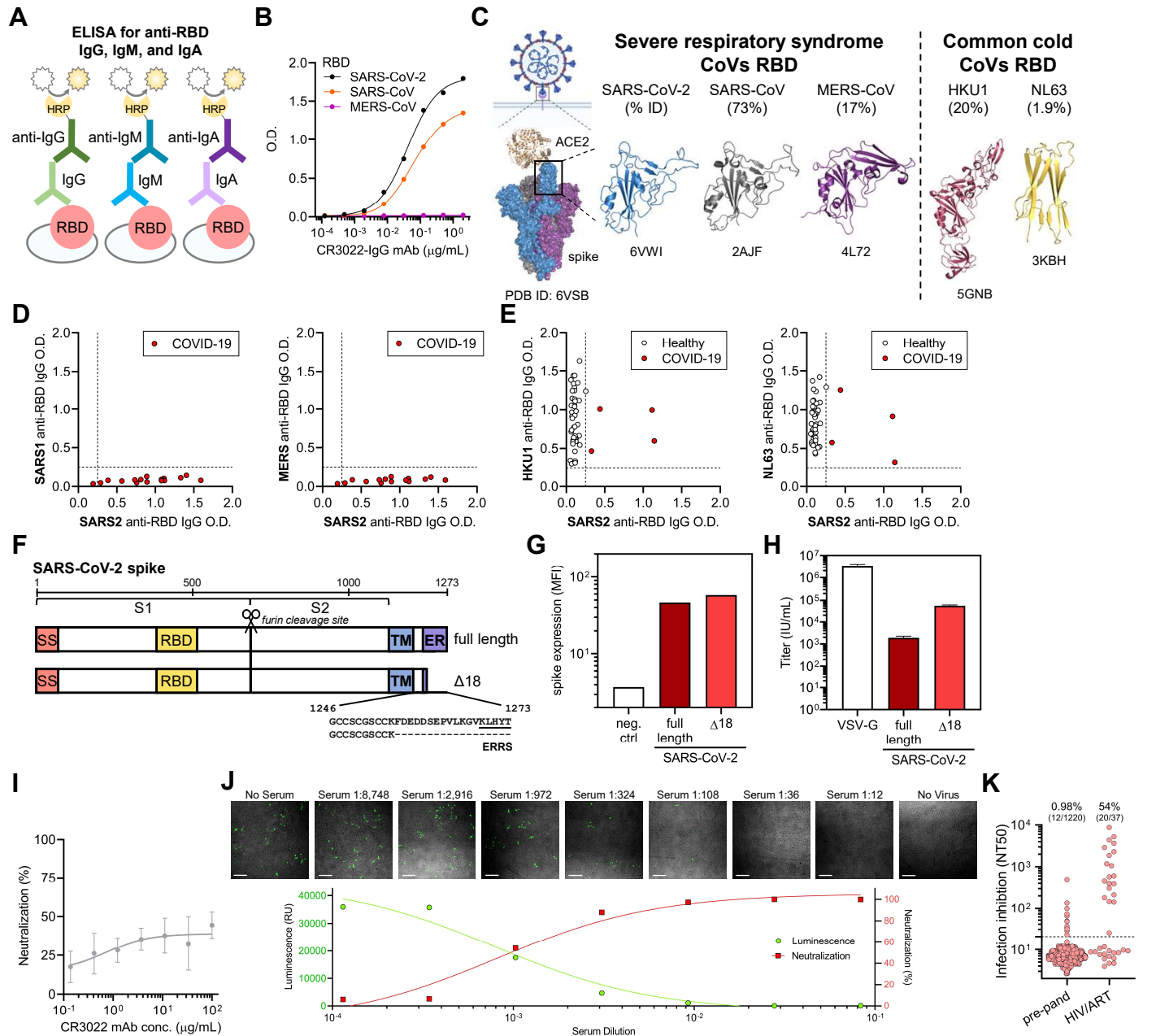
Supplemental Figure S1



Supplementary Figure S1: Clinical laboratory data from COVID-19 patients.

(A-D) Violin plots of peak serum levels of (A) ferritin, (B) D-dimer, (C) lactate dehydrogenase, and (D) troponin-T documented for each COVID-19 patient in the indicated cohorts are shown. Clinical laboratory-defined cut-offs of the upper limit of normal are indicated with a dotted line. For each parameter, a non-parametric ANOVA was performed; statistical significance is indicated as follows: **** $p < 0.0001$, *** $p < 0.001$, ** $p < 0.01$, and * $p < 0.05$.

Supplemental Figure S2



Supplementary Figure S2: Cross-reactivity of anti-CoV antibody responses and high-throughput SARS-CoV-2 pseudovirus neutralization assay.

(A) A schematic of the quantitative indirect ELISA that measures IgG, IgM, and IgA antibodies to the receptor binding domain (RBD) for SARS-CoV-2 is shown.

(B) Reactivity of the anti-SARS-CoV and -CoV-2-specific monoclonal antibody (CR3022 mAb) towards SARS-CoV-2, SARS-CoV, and MERS-CoV RBD was measured.

(C) Published crystal structures of the ACE2:prefusion-stabilized SARS-CoV-2 spike (PDB ID: 6VSB) as well as the RBD of SARS-CoV-2 (PDB ID 6VWI), SARS-CoV (PDB ID 2AJF), MERS-CoV (PDB ID: 4L72), HKU1 (PDB ID 5GNB), and NL63 (PDB ID 3KBH) are presented, with the sequence homology to SARS-CoV-2 RBD indicated.

(D-E) Cross-reactivity of sera from SARS-CoV-2-infected patients ($n = 15$) towards the RBD of (D, left) SARS-CoV and (D, right) MERS-CoV, as well as the reactivity of sera from healthy blood donors ($n = 43$) and COVID-19 patients towards the RBD of two common cold coronaviruses, (E, left) HKU1 and (E, right) NL63, was measured using a modified anti-RBD IgG ELISA and optical density as a read-out.

(F) A schematic of the full length and truncated ($\Delta 18$) construct of SARS-CoV-2 spike used to pseudotype lentivirus is shown; ERSS denotes ER retention signal.

(G) Expression of the indicated spike constructs was measured on the surface of 293T cells via flow cytometry.

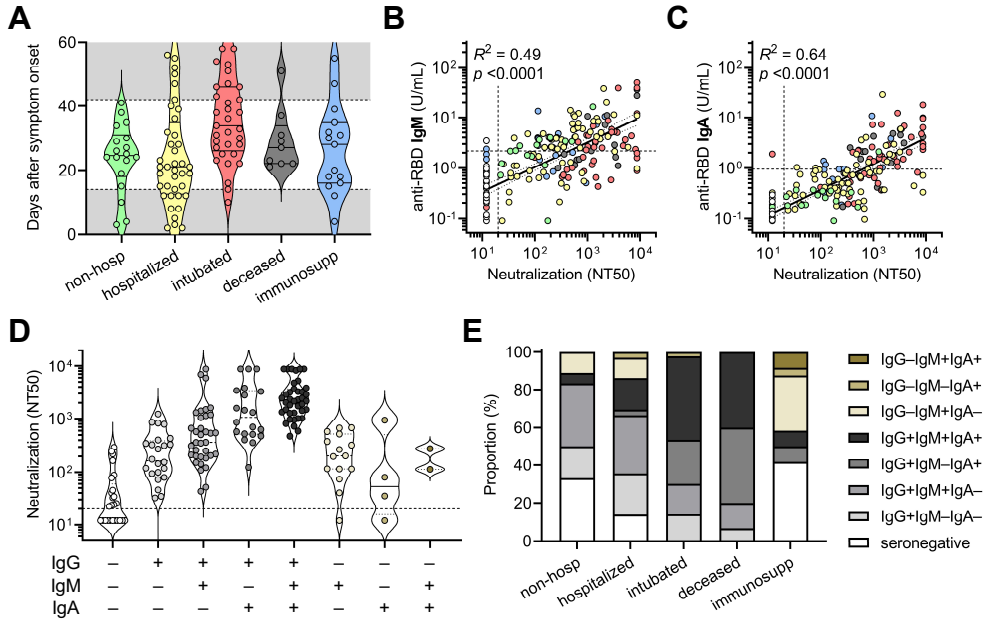
(H) Pseudovirus titers of the indicated spike constructs were quantified.

(I) Lack of neutralizing ability of CR3022 mAb was confirmed in pseudovirus neutralization assay.

(J) Confocal microscopy of each well of a serum dilution series using a representative COVID-19 patient sample taken 60 - 72 h after assay setup demonstrated the correlation between luciferase activity and transduced target cells. Neutralization percentage at each dilution was calculated by measuring luciferase activity (luminescence) and normalizing to control well with no serum. Scale bar equals 200 μm .

(K) False positive NT50 were observed in individuals taking antiretroviral medications ($n = 20$ out of 37 individuals), while a large cohort of pre-pandemic individuals for which antiretroviral use was largely screened out showed a very low rate of infection inhibition ($n = 12$ out of 1,220).

Supplemental Figure S3



Supplementary Figure S3: Correlates between clinical outcomes and humoral immune responses against SARS-CoV-2.

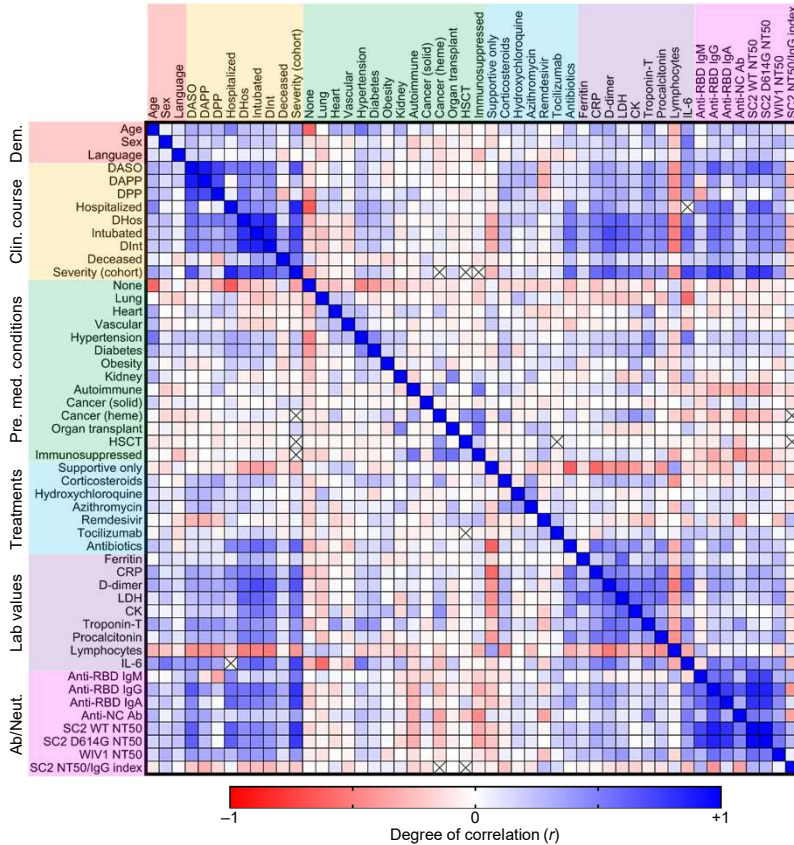
(A) Standardization of cohorts by days after symptom onset to samples collected between 14 and 42 days was done to mitigate sampling biases and balance out representation from each cohort indicated.

(B-C) Pearson correlations between neutralization (NT50) and (B) anti-RBD IgM and (C) anti-RBD IgA levels were performed, with R^2 and p values indicated.

(D) Neutralization capacity of COVID-19 patient samples collected between 14 and 42 days after symptom onset ($n = 85$) grouped by serostatus as determined by the anti-RBD IgG, IgM, and IgA ELISA was plotted.

(E) Proportion of COVID-19 patients ($n = 98$) within each indicated serostatus group is presented.

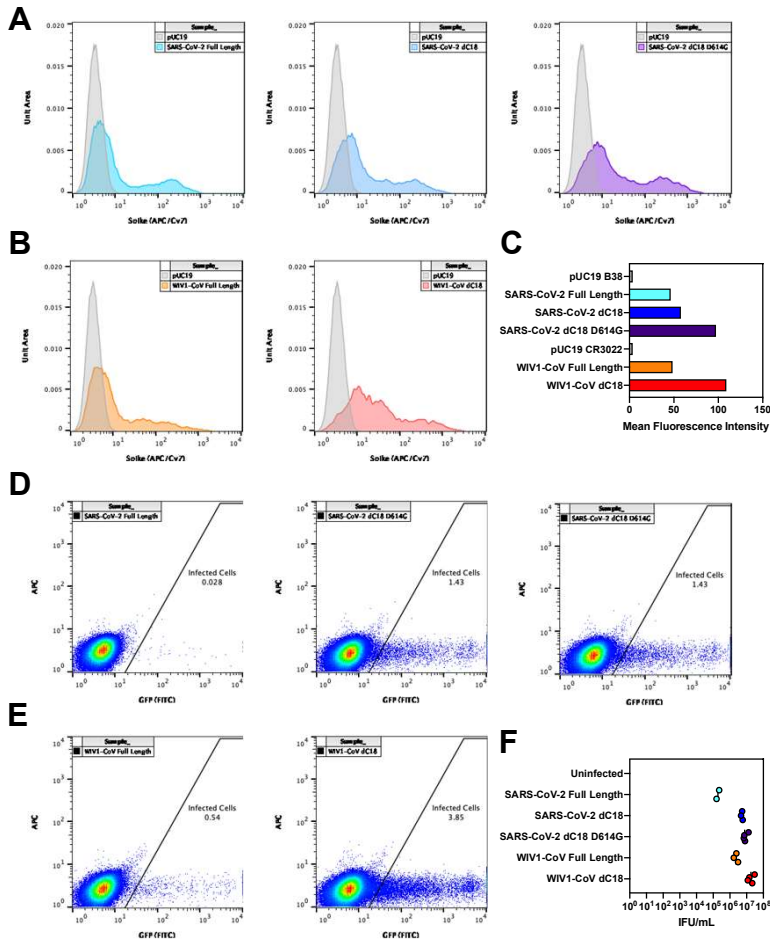
Supplemental Figure S4



Supplementary Figure S4: Multivariate analysis of demographic data, clinical course, pre-existing medical conditions, treatments, laboratory data, and antibody and neutralization data in COVID-19 patients.

A multi-variate analysis of all available data including age, sex, language, hospital course and events, pre-existing medical conditions, treatments received, clinical laboratory data, and antibody and neutralization data was performed, with Pearson coefficients (r) ranging from -1 (red) to 0 (white) to +1 (blue). The presence of an 'x' indicates that there were insufficient data to correlate the variables in question. The following abbreviations were used: DASO, days after symptom onset; DAPP, days after PCR positivity; DPP, days PCR positive (total number of days between first PCR positive results and last PCR positive result that was followed by one negative result); DHos, days hospitalized; HSCT, hematopoietic stem cell transplant; CRP, C-reactive protein; LDH, lactate dehydrogenase; CK, creatine kinase; anti-RBD, anti-receptor binding domain; anti-NC Ab, anti-nucleocapsid antibody (as measured by the commercially available Roche SARS-CoV-2 total antibody chemiluminescent assay); SC2, SARS-CoV-2.

Supplemental Figure S5



Supplemental Figure S5. Characterization of CoV spike expression vectors.

(A) Surface level expression of SARS-CoV-2 spike protein following transfection of 293T cells. Several constructs of spike were tested: codon-optimized full-length spike from SARS-CoV-2, a truncated version with 18 amino acids deleted from the cytoplasmic tail (Δ 18), and a truncated version that also includes a D614G mutation. Expression was measured via flow cytometry by staining with B38 antibody at a concentration of 10 μ g/mL followed by staining with an anti-human IgG antibody conjugated to AF647 at 2 μ g/mL.

(B) Surface level expression of full-length and truncated (Δ 18) WIV1-CoV spike proteins were also measured following transfection of 293T cells via flow cytometry. Expression was measured via flow cytometry by staining with CR3022 antibody at a concentration of 10 μ g/mL followed by staining with an anti-human IgG antibody conjugated to AF647 at 2 μ g/mL.

(C) Summary of expression data is shown.

(D-E) Titers of lentivirus pseudotyped with the (D) SARS-CoV-2 or (E) WIV1-CoV spike proteins were measured by transducing ACE2-expressing 293T cells with 100 μ L of lentivirus supernatant.

(F) Transduction with 10-fold serial dilutions and subsequent assessment of ZsGreen expression by flow cytometry was performed to calculate pseudovirus titer (U/mL) for each construct indicated.