

AUTISM SPECTRUM DISORDER: A POSSIBLE LINK WITH CHONDROITIN SULFATE

Running head: ASD: a possible link with chondroitin sulfate

Eduardo Listik, M.Sc. Ph.D.^{a,b}, Marcia Listik, M.D.^c, Clarice Listik, M.Sc. M.D.^d, Leny Toma, Ph.D.^a

^a *Department of Biochemistry, Universidade Federal de São Paulo. Rua Três de Maio, 100, São Paulo, SP, Brazil, CEP: 04044-020.*

^b *Department of Pathology, University of Alabama at Birmingham, Birmingham AL, USA, 35294*

^c *Listik Neuro Serviços Médicos, São Paulo, SP, Brazil. Rua Afonso Celso, 1629 cj. 42, São Paulo, SP, Brazil, CEP: 04119-062.*

^d *Department of Neurology, Universidade de São Paulo. Universidade de São Paulo, Center of Movements Disorders, São Paulo SP, Brazil. CEP: 05402-000.*

Corresponding author:

Eduardo Listik, Ph.D.

WTI 330F, 1824 Sixth Avenue South,

Birmingham, AL, 35233.

E-mail: elistik@uabmc.edu

Phone: +1-205-934-6980/1

Funding: This work was supported by Fundação de Amparo à Pesquisa do Estado de São Paulo (FAPESP, grant number 2016/18066-6 to LT); and, in part, by the Coordenação de Aperfeiçoamento de Pessoal de Nível Superior – Brasil (CAPES) – Finance Code 001, including fellowship to EL.

Authors' contributions: ED Prepared all samples, performed data analysis, and drafted the initial manuscript. ML Collected data, carried out the patient care and selection. LT Performed gel electrophoresis. All authors reviewed and revised the manuscript.

Conflict of interest: The authors declare that they have no conflict of interest.

Keywords: Autism, Diagnostics, Developmental disorders, Glycosaminoglycan, Chondroitin sulfate

1 **ABSTRACT**

2 This study aimed to determine discrepancies in the urinary glycosaminoglycan profiles
3 of autism spectrum disorder (ASD) patients (n=9) when compared with those from
4 healthy volunteers (HVs, n=3). The guardians and/or educators for each participant also
5 returned a validated Autism Behavior Checklist (ABC). The urinary chondroitin sulfate
6 (CS) concentration was 46.1% lower in the ASD group than in the HV group. The ABC
7 score and the urinary CS concentration were negatively correlated (Spearman's $\rho=-$
8 0.2635), indicating that as the severity of the clinical aspect of this disorder increased,
9 the urinary CS concentration decreased. These results suggest that low CS
10 concentrations in the urine may be associated with ASD, and could be measured using a
11 fast and low-cost method for diagnostics.

12 INTRODUCTION

13 Autism spectrum disorder (ASD) are characterized by a lack of social interaction
14 and impaired verbal and non-verbal communication and can be diagnosed as early as
15 three years of age (Park et al., 2016).

16 Over the last two decades, ASD diagnoses have steadily increased (Fisch, 2012).
17 Some specialists have argued that this increase has been due to an expansion of the
18 diagnostic criteria and increased social awareness; however, newly diagnosed patients
19 appear to have similar profiles as those diagnosed using previous assessments, and the
20 new criteria do not seem to have influenced these results (Baio et al., 2018; Graf, Miller,
21 Epstein, & Rapin, 2017). The diagnosis of ASD is observational and based on the
22 patient's behavior, although some biomarkers have been proposed (Galiana-Simal,
23 Munoz-Martinez, Calero-Bueno, Vela-Romero, & Beato-Fernandez, 2018).

24 Glycosaminoglycans (GAGs) are complex polysaccharides, composed of
25 repeating disaccharide units. The composition of these units and their linking patterns
26 result in the formation of distinct GAGs, such as chondroitin sulfate (CS), dermatan
27 sulfate (DS) and heparan sulfate (HS) (Gandhi & Mancera, 2008). GAGs may conjugate
28 with proteins, known as proteoglycans, and are essential for embryogenesis and
29 neuronal migration during development. CS proteoglycan mutations may be associated
30 with schizophrenia and bipolar disorder (Couchman, 2010; Iozzo & Schaefer, 2015;
31 Maeda, 2015; Muhleisen et al., 2012; Nakato & Li, 2016; Turner & Grose, 2010).
32 Additionally, excreted GAGs in the urine may be used to diagnose
33 mucopolysaccharidoses (MPS) (Coutinho, Lacerda, & Alves, 2012). Recently, the
34 genes associated with glycan synthesis have been thought to play a role in the
35 development of ASD (Dwyer & Esko, 2016; Endreffy, Bjorklund, Dicso, Urbina, &
36 Endreffy, 2016). Therefore, this study aimed to assess whether the concentrations of

37 GAGs in the urine of ASD patients can be used to facilitate the diagnosis of ASD,
38 potentially resulting in a better understanding of the ASD pathophysiology and possible
39 therapeutic targets.

40 **METHODS**

41 **Standard protocol approvals, registrations, and patient consents**

42 All procedures performed in studies involving human participants were in
43 accordance with the ethical standards of the Institutional Ethics Committee of Research
44 (n° 14667219.0.0000.5505) and with the 1964 Helsinki declaration and its later
45 amendments or comparable ethical standards. Written informed consent/assent was
46 obtained from all participants or their guardians.

47 **Patients and clinical assessments**

48 A pediatric neurologist assessed patients with behavioral or communication
49 difficulties for the evaluation of a possible ASD diagnosis. Exclusion criteria were as
50 follows: younger than 2 years; older than 8 years; neurological lesions; mental
51 deficiency; and other diseases. Patients were also excluded if additional cases of ASD or
52 consanguinity were detected in their family histories. The same exclusion criteria were
53 applied to the healthy volunteers (HVs). The guardians and/or educators for all
54 participants were asked to respond to an electronic version of the validated Autism
55 Behavior Checklist (ABC), which is often used for its ability to identify children with
56 autism. (Marteleto & Pedromonico, 2005) Both total scores and sub-scores were
57 calculated. The sub-scores included: sensory stimulus (SS), use of body and objects
58 (BO), language (LG), and personal-social development (PS). All participants had a
59 urine sample collected, which was stored at -20 °C until processing.

60 **Glycosaminoglycan analysis**

61 Urine samples were centrifuged at 5,000 rpm for 10 min, 4 mL of the
62 supernatant were concentrated, using Amicon[®] Ultra centrifugal filters with a molecular
63 weight cut-off of 3 kDa (Millipore, Massachusetts, USA), and the concentrate was
64 desalted using 10 mM NaCl (Sun et al., 2015).

65 Concentrated samples were applied to 0.6% agarose slabs, in diaminopropane-
66 acetate, 0.05 M (pH 9.0) buffer, and the GAGs were electrophoretically separated at 100
67 V for 60 min (Dietrich & Dietrich, 1976; Jaques, Ballieux, Dietrich, & Kavanagh,
68 1968). Gels were maintained in cetyltrimethylammonium bromide at 0.2% for 1 h and
69 dehydrated completely before being stained with a solution of 0.1% toluidine blue, 1%
70 acetic acid and 50% ethanol for 20 min. The excess dye was removed with quick
71 washes of a destaining solution containing 1% acetic acid and 50% ethanol. The GAG
72 bands were densitometrically quantified and compared with an HS/DS/CS standard to
73 calculate the GAG concentrations in the urine.

74 **Data analysis**

75 GAG concentrations and ABC scores were compared between the HV and ASD
76 groups using a Mann-Whitney test, with $p < 0.05$ representing a significant difference.
77 The two variables were also examined for a possible correlation using Spearman's rank-
78 order correlation test. Variables were screened for outliers using the robust regression
79 and outlier removal test (ROUT's test).

80 **Data availability Statement**

81 All data associated with this study are available from the corresponding author,
82 upon reasonable request.

83 **RESULTS**

84 This study included 12 participants, nine who were diagnosed with ASD and
85 three HVs. One ASD patient was excluded based on the ROUT's test results for the
86 ABC scores, and one HV was excluded due to sample deterioration. The sample
87 descriptors are summarized in Table 1.

88 Our data revealed that the ABC scores for the ASD patients (63.5 ± 23.4) were
89 significantly higher than those for the HVs (5.0 ± 2.8), as shown in Figure 1B. The ABC
90 sub-scores revealed that ASD patients received higher scores for all investigated
91 parameters, except for the relationship (RE) category (Figure 1B). The gel
92 electrophoresis for the assessment of GAG concentrations in the urine showed the
93 prevalence of CS, small signs of HS and none DS (Figure 1A) A significant reduction
94 ($p = 0.04$) of 46.1% in the CS concentrations was observed in the urine of ASD patients
95 compared with the urine of HV patients. Whereas ASD patients had a mean CS
96 concentration of 9.44 ± 5.75 mg/L, HVs had a considerably higher mean concentration
97 of 17.51 ± 4.04 mg/L (Figure 1C).

98 Although a larger sample size would be necessary to estimate a precise
99 correlation between the two examined variables (i.e., ABC score vs. CS concentration in
100 urine), we observe that ABC scores for ASD patients were negatively correlated
101 (Spearman's $\rho = -0.2635$) with the measured GAG concentrations in the urine, which
102 could indicate that lower levels of CS in the urine may be associated with worse ASD
103 clinical diagnoses.

104 **DISCUSSION**

105 As previously mentioned, GAGs have been used to monitor MPS. During these
106 pathologies, CS, DS, HS or keratan sulfate (KS) can be observed in patient urine
107 samples, depending on the MPS (Coutinho et al., 2012). However, we discovered that
108 ASD patients display lower urinary CS concentrations for reasons that remain unknown.

109 There is no corroborating evidence in the literature that would explain the lower
110 CS concentrations observed in the urine samples from ASD patients. The deletion of
111 *EXT1*, *GPC5*, *GPC6*, and mutation of *HS3ST5* and *SGSH*, appear to be associated with
112 ASD (Dwyer & Esko, 2016). These genes participate in HS synthesis, sulfation,
113 degradation, or HS proteoglycan synthesis. In addition, the deletion of *B3GALT6*, a
114 gene that affects both HS and CS synthesis, also appears to be implicated with ASD
115 (van der Zwaag et al., 2009).

116 The detection of GAGs in the urine may not be appropriate for the detection of
117 HS in these samples, as this GAGs was hardly detectable either in patients with ASD or
118 HVs urines; however, because the glycan balance may be altered in patients with ASD,
119 these alterations can be verified based on the CS concentrations, which revealed
120 significant discrepancies in this pilot study. A larger sample may establish whether
121 urinary CS concentrations can be utilized as a biomarker for ASD and help shed light on
122 the still unknown ASD pathophysiology, and this is a clear limitation of this study. In
123 addition, more studies with HS or specific proteoglycans in the blood or other samples
124 may also increase our understanding of ASD pathophysiology.

125 In this pilot study, we were able to infer that ASD patients may excrete less CS
126 in the urine, which can be assessed using a fast and low-cost analytical method.

127 **REFERENCES**

128 Baio, J., Wiggins, L., Christensen, D. L., Maenner, M. J., Daniels, J., Warren, Z., . . .
129 Dowling, N. F. (2018). Prevalence of Autism Spectrum Disorder Among
130 Children Aged 8 Years - Autism and Developmental Disabilities Monitoring
131 Network, 11 Sites, United States, 2014. *MMWR Surveill Summ*, 67(6), 1-23.
132 doi:10.15585/mmwr.ss6706a1

- 133 Couchman, J. R. (2010). Transmembrane signaling proteoglycans. *Annu Rev Cell Dev*
134 *Biol*, 26, 89-114. doi:10.1146/annurev-cellbio-100109-104126
- 135 Coutinho, M. F., Lacerda, L., & Alves, S. (2012). Glycosaminoglycan storage disorders:
136 a review. *Biochem Res Int*, 2012, 471325. doi:10.1155/2012/471325
- 137 Dietrich, C. P., & Dietrich, S. M. (1976). Electrophoretic behaviour of acidic
138 mucopolysaccharides in diamine buffers. *Anal Biochem*, 70(2), 645-647.
139 Retrieved from <http://www.ncbi.nlm.nih.gov/pubmed/131498>
- 140 Dwyer, C. A., & Esko, J. D. (2016). Glycan susceptibility factors in autism spectrum
141 disorders. *Mol Aspects Med*, 51, 104-114. doi:10.1016/j.mam.2016.07.001
- 142 Endreffy, I., Bjorklund, G., Dicso, F., Urbina, M. A., & Endreffy, E. (2016). Acid
143 glycosaminoglycan (aGAG) excretion is increased in children with autism
144 spectrum disorder, and it can be controlled by diet. *Metab Brain Dis*, 31(2), 273-
145 278. doi:10.1007/s11011-015-9745-2
- 146 Fisch, G. S. (2012). Nosology and epidemiology in autism: classification counts. *Am J*
147 *Med Genet C Semin Med Genet*, 160C(2), 91-103. doi:10.1002/ajmg.c.31325
- 148 Galiana-Simal, A., Munoz-Martinez, V., Calero-Bueno, P., Vela-Romero, M., & Beato-
149 Fernandez, L. (2018). Towards a future molecular diagnosis of autism: Recent
150 advances in biomarkers research from saliva samples. *Int J Dev Neurosci*, 67, 1-
151 5. doi:10.1016/j.ijdevneu.2018.03.004
- 152 Gandhi, N. S., & Mancera, R. L. (2008). The structure of glycosaminoglycans and their
153 interactions with proteins. *Chem Biol Drug Des*, 72(6), 455-482.
154 doi:10.1111/j.1747-0285.2008.00741.x

- 155 Graf, W. D., Miller, G., Epstein, L. G., & Rapin, I. (2017). The autism "epidemic":
156 Ethical, legal, and social issues in a developmental spectrum disorder.
157 *Neurology*, 88(14), 1371-1380. doi:10.1212/WNL.0000000000003791
- 158 Iozzo, R. V., & Schaefer, L. (2015). Proteoglycan form and function: A comprehensive
159 nomenclature of proteoglycans. *Matrix Biol*, 42, 11-55.
160 doi:10.1016/j.matbio.2015.02.003
- 161 Jaques, L. B., Ballieux, R. E., Dietrich, C. P., & Kavanagh, L. W. (1968). A
162 microelectrophoresis method for heparin. *Can J Physiol Pharmacol*, 46(3), 351-
163 360. Retrieved from <http://www.ncbi.nlm.nih.gov/pubmed/4177320>
- 164 Maeda, N. (2015). Proteoglycans and neuronal migration in the cerebral cortex during
165 development and disease. *Front Neurosci*, 9, 98. doi:10.3389/fnins.2015.00098
- 166 Marteleto, M. R., & Pedromonico, M. R. (2005). Validity of Autism Behavior Checklist
167 (ABC): preliminary study. *Braz J Psychiatry*, 27(4), 295-301. doi:/S1516-
168 44462005000400008
- 169 Muhleisen, T. W., Mattheisen, M., Strohmaier, J., Degenhardt, F., Priebe, L., Schultz,
170 C. C., . . . Cichon, S. (2012). Association between schizophrenia and common
171 variation in neurocan (NCAN), a genetic risk factor for bipolar disorder.
172 *Schizophr Res*, 138(1), 69-73. doi:10.1016/j.schres.2012.03.007
- 173 Nakato, H., & Li, J. P. (2016). Functions of Heparan Sulfate Proteoglycans in
174 Development: Insights From Drosophila Models. *Int Rev Cell Mol Biol*, 325,
175 275-293. doi:10.1016/bs.ircmb.2016.02.008

- 176 Park, H. R., Lee, J. M., Moon, H. E., Lee, D. S., Kim, B. N., Kim, J., . . . Paek, S. H.
177 (2016). A Short Review on the Current Understanding of Autism Spectrum
178 Disorders. *Exp Neurobiol*, 25(1), 1-13. doi:10.5607/en.2016.25.1.1
- 179 Sun, X., Li, L., Overdier, K. H., Ammons, L. A., Douglas, I. S., Burlew, C. C., . . .
180 Linhardt, R. J. (2015). Analysis of Total Human Urinary Glycosaminoglycan
181 Disaccharides by Liquid Chromatography-Tandem Mass Spectrometry. *Anal*
182 *Chem*, 87(12), 6220-6227. doi:10.1021/acs.analchem.5b00913
- 183 Turner, N., & Grose, R. (2010). Fibroblast growth factor signalling: from development
184 to cancer. *Nat Rev Cancer*, 10(2), 116-129. doi:10.1038/nrc2780
- 185 van der Zwaag, B., Franke, L., Poot, M., Hochstenbach, R., Spierenburg, H. A.,
186 Vorstman, J. A., . . . Staal, W. G. (2009). Gene-network analysis identifies
187 susceptibility genes related to glycobiology in autism. *PLoS One*, 4(5), e5324.
188 doi:10.1371/journal.pone.0005324

189 **TABLES**

190 *Table 1. Sample descriptors for ASD patients and HVs.* The sample size, mean age,
191 distribution of sex, and ABC sub-scores and total score are shown for each group. The
192 number of individuals removed from each group is shown in the parentheses.

Descriptor	ASD patients	HV
Sample size	9 (-1)	3 (-1)
Mean age	3.9 ± 1.1 years	8.0 ± 0.0 years
Sex	All male	All male
Ethnicity	Caucasian (88.9%) Asian (11.1%)	Caucasian (100%)
ABC sensory stimulus (SS)	8.6 ± 4.4	0.0 ± 0.0
ABC relationship (RE)	10.6 ± 7.2	1.5 ± 2.1
ABC use of body and objects (BO)	14.5 ± 8.4	0.0 ± 0.0
ABC language (LG)	16.2 ± 6.0	0.0 ± 0.0
ABC personal and social development (PS)	13.7 ± 6.0	3.5 ± 0.7
ABC total score	63.5 ± 23.4	5.0 ± 2.8

193

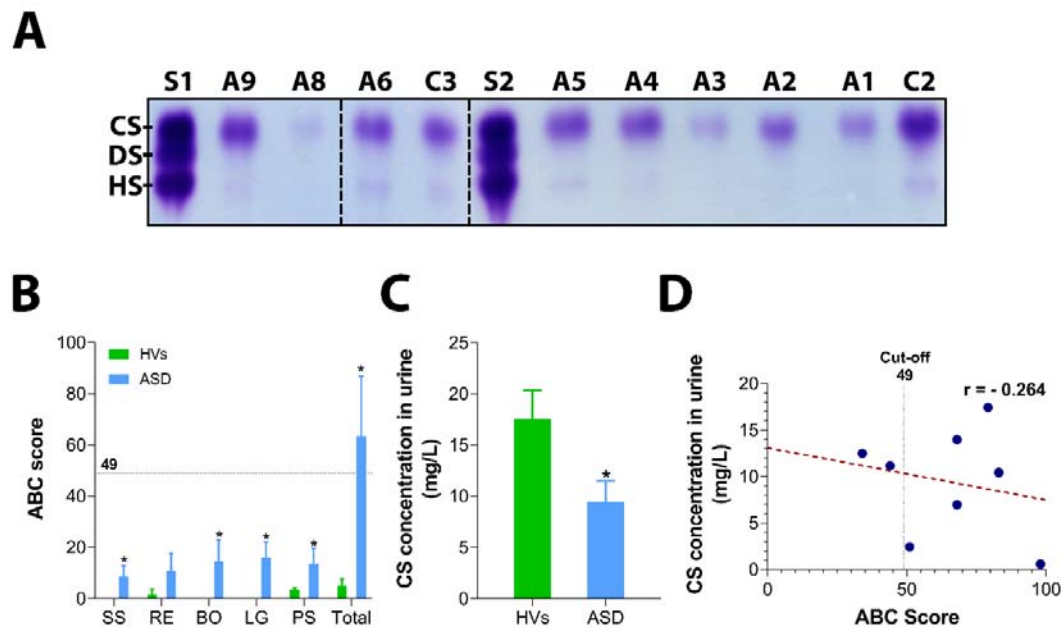
194 **FIGURE CAPTIONS**

195 *Figure 1. Discrepancies in the CS concentrations in the urine between ASD patients*
196 **and HVs.** (A) Processed urine samples were analyzed for GAG concentrations using an
197 electrophoretic method, in which CS was prevalent. S1 and S2 are the CS/DS/HS
198 standards, A1 – A9 (except A7 which was excluded) are ASD patients, and C2 and C3
199 are HVs. (B) ASD patients displayed significantly higher ABC scores than HVs. All of
200 the sub-scores, except for relationship (RE), were higher in ASD patients than in HVs.
201 The horizontal dotted line at $y = 49$ indicates the scale cut-off. Other sub-scores
202 abbreviations: sensory stimulus (SS), use of body and objects (BO), language (LG), and
203 personal-social development (PS). (C) The measured CS concentration in the urine of
204 ASD patients is significantly lower than that in HVs. (D) A negative correlation
205 between ABC scores and CS concentration in urine, based on the Spearman's ρ .

206 **FIGURES**

207

Figure 1 top



208