

Title: Association between early discontinuation of endocrine therapy and recurrence of breast cancer among premenopausal women in a Danish population-based cohort

Author List: Lindsay J Collin,^{a,b} Deirdre P Cronin-Fenton,^b Thomas P Ahern,^c Michael Goodman,^a Lauren E McCullough,^a Lance A Waller,^d Anders Kjærsgaard,^b Per Damkier,^{f,g} Peer M Christiansen,^{h,i} Bent Ejlersen,^{i,j} Maj-Britt Jensen,ⁱ Henrik Toft Sørensen,^b Timothy L Lash^{a,b}

Affiliations: ^aDepartment of Epidemiology, Rollins School of Public Health, Emory University, Atlanta, GA, USA; ^bDepartment of Clinical Epidemiology, Aarhus University Hospital, Aarhus, Denmark; ^cDepartment of Surgery, The Robert Larner, M.D. College of Medicine at The University of Vermont, Burlington, VT, USA; ^dDepartment of Biostatistics and Bioinformatics, Rollins School of Public Health, Emory University, Atlanta GA, USA; ^eInstitute of Pathology, Aarhus University Hospital, Aarhus, Denmark; ^fDepartment of Clinical Biochemistry and Pharmacology, Odense University Hospital, Odense, Denmark; ^gDepartment of Clinical Research, University of Southern Denmark, Odense, Denmark; ^hDepartment of Plastic and Breast Surgery, Aarhus University Hospital, Aarhus, Denmark; ⁱDanish Breast Cancer Group, Rigshospitalet, Copenhagen University Hospital, Copenhagen, Denmark; ^jRigshospitalet, Copenhagen, Denmark

Funding support: This work was supported primarily by R01CA166825 from the US National Cancer Institute awarded to Timothy L. Lash and R167-2013-15861 from the Lundbeck Foundation awarded to Deirdre Cronin-Fenton. This work was also supported by NNF19OC0058710 from the Novo Nordisk Foundation awarded to Deirdre Cronin-Fenton. Lindsay J. Collin was supported by the US National Cancer Institute (F31CA239566). Thomas P. Ahern was supported in part by funding from the National Institute of General Medical Sciences (P20GM103644). The content of this paper is solely the responsibility of the authors and does not necessarily represent the official views of the US National Institutes of Health or other sources of funding support.

Correspondence should be addressed to: Lindsay J Collin, Department of Public Health Sciences, Huntsman Cancer Institute, University of Utah. 2000 Circle of Hope, Salt Lake City, Utah 84112; Email: lindsay.collin@hci.utah.edu

Running Head: Discontinuation of endocrine therapy and breast cancer recurrence

Conflicts of Interest: The authors have no conflicts of interest to declare.

ABSTRACT

Purpose: Premenopausal women diagnosed with estrogen receptor (ER) positive breast cancer are prescribed 5–10 years of endocrine therapy to prevent or delay recurrence. Many women who initiate endocrine therapy fail to complete the recommended course of treatment. In this study, we evaluated the association between early discontinuation of adjuvant endocrine therapy and breast cancer recurrence in a cohort of premenopausal women.

Patients and Methods: We identified 4,503 premenopausal ER+ breast cancer patients who initiated adjuvant endocrine therapy and were registered in the Danish Breast Cancer Group clinical database (2002–2011). Women were excluded if they had a recurrence or were lost to follow-up less than 1.5 years after breast cancer surgery. Endocrine therapy was considered complete if the patient received at least 4.5 years of treatment or discontinued medication less than 6 months before recurrence. Exposure status was updated annually and modeled as a time-dependent variable. We accounted for baseline and time-varying confounders *via* time-varying weights, which we calculated from multivariable logistic regression models and included in regression models to estimate hazard ratios (HR) and accompanying 95% confidence intervals (CI) associating early discontinuation with breast cancer recurrence.

Results: Over the course of follow-up, 1,001 (22%) women discontinued endocrine therapy. We observed 202 (20%) recurrences among those who discontinued endocrine therapy, and 388 (11%) among those who completed the recommended treatment. The multivariable-adjusted estimated rate of recurrence was higher in women who discontinued endocrine therapy relative to those who completed their treatment (HR=1.67, 95% CI 1.25, 2.14).

Conclusion: These results highlight the importance of clinical follow-up and behavioral interventions that support persistence of adjuvant endocrine therapy to prevent breast cancer recurrence.

Background

More than two-thirds of premenopausal women diagnosed with breast cancer have estrogen receptor (ER)-positive disease and are therefore candidates for endocrine therapy.¹ Current guidelines recommend that premenopausal women diagnosed with ER-positive tumors receive adjuvant tamoxifen therapy for at least five years post-diagnosis to prevent or delay a recurrence.² Tamoxifen is a selective ER modulator with metabolites that compete with estrogen at the ER binding site.³ Tamoxifen was first introduced in the adjuvant setting in 1989 with treatment guidelines recommending one year of adjuvant therapy.⁴ As evidence from clinical trials accumulated, treatment guidelines have extended the intended duration of adjuvant tamoxifen therapy from one year, to two years, to five years.⁵ A pooled analysis of tamoxifen clinical trials among breast cancer patients diagnosed with ER-positive disease reported risk ratios (RR) for the effect of one, two, and five years of tamoxifen therapy versus placebo of 0.79, 0.72, and 0.50, respectively.⁶ Since 2013, a duration of up to ten years of tamoxifen is recommended for premenopausal women diagnosed with non-metastatic breast cancer.⁷ These changes in guidelines reflect accumulating evidence of the benefit of longer duration tamoxifen therapy.

Barriers to tamoxifen treatment adherence and completion include sociodemographic characteristics suggestive of poor access to resources, concurrent medication use, disease severity, and overall health status of the patient.⁸⁻¹³ Lower treatment completion has been observed in younger patients (aged less than 40 years), unmarried patients, and those with a low level of social support.¹⁴ Switching hormonal therapies can also reduce adherence.^{15,16} Endocrine therapies sometimes cause adverse side effects (e.g. hot flashes, nausea, fatigue,

arthralgia, vaginal bleeding, and fractures) that can affect a patient's choice to continue therapy.^{17,18}

Early discontinuation and poor adherence to prescribed therapies may contribute to poor patient outcomes. In the US, approximately 50% of breast cancer patients never complete the intended duration of endocrine therapy.¹⁹ In Denmark, the proportion of patients completing adjuvant therapy is higher. A population-based study using the Danish Breast Cancer Group (DBCG) clinical database reported that approximately 84% of postmenopausal breast cancer patients in Denmark completed endocrine therapy, which was defined as medication use for at least 4.5 years.²⁰ No study has quantified the effect of early discontinuation of adjuvant endocrine therapy on breast cancer recurrence in an exclusively premenopausal cohort. In this study, we quantify the association between early discontinuation of endocrine therapy and breast cancer recurrence among premenopausal women with a stage I–III first primary breast cancer diagnosis in Denmark.

Methods

Study Population

Denmark provides universal tax-funded health care with residency-based entitlement and availability of government-maintained nationwide registries, providing longitudinal sources of routinely collected administrative, health, and clinical quality data.²¹ The Predictors of Breast Cancer Recurrence (ProBe CaRe) cohort is a study of premenopausal women diagnosed with breast cancer in Denmark and reported to the DBCG.²² The cohort includes 4,600 women diagnosed with stage I–III ER-positive primary breast cancer between January 1, 2002 and December 31, 2011. Women were excluded if they had a previous cancer diagnosis.

As breast cancer recurrences that occur within the first 1.5 years following breast cancer surgery are unlikely to be related to endocrine therapy, we also excluded 97 women in the cohort (68 of whom were diagnosed with a breast cancer recurrence) who had less than 1.5 years of follow-up. The final study population included 4,503 premenopausal women diagnosed with ER-positive breast cancer. Members of the cohort had follow-up information available until August 31, 2019, with recurrence follow-up from 1.5 years after surgery until the first of a) recurrence, b) death, c) 10 years of follow-up, d) loss to follow-up due to emigration, e) another incident malignancy, or f) the end of available follow-up. Mortality and emigration were identified using the Danish Civil Registration System, which is updated daily.²³ Emigration or withdrawal from clinical follow-up were the only sources of loss of follow-up, which have impacted less than 5% of the study population. This study was approved by the Danish Data Protection Agency (record number KEA-2017-4), the Danish Medicines Agency, the DBCG (DBCG-2014-15), and the local Institutional Review Boards of the US co-investigators. This study is based on routinely collected registry data, so Danish law does not require an ethical board's approval in Denmark, nor does it require patient consent to participate.

Exposure: Early Discontinuation

According to the DBCG guidelines, women diagnosed with breast cancer are recommended to undergo semi-annual examinations during the first 5 years after diagnosis and annual examinations in years 6–10.²⁴ Women undergoing treatment for breast cancer receive endocrine therapy at the treating hospital at each follow-up visit. Treatments prescribed during these follow-up visits are registered by the DBCG, which documents whether a treatment was received and the type of therapy

(tamoxifen or aromatase inhibitors). At each visit, a 6-month supply of endocrine therapy is dispensed.

Early discontinuation of endocrine therapy was defined as receipt of endocrine therapy for less than 4.5 years. If a recurrence, emigration, or death occurred before 5 years elapsed after treatment initiation, then discontinuation of therapy was deemed early if therapy was discontinued more than half a year before the event. Initiation of endocrine therapy was defined as the first date of receipt of endocrine therapy according to the DBCG registry. Discontinuation of endocrine therapy was based on the last date of receipt of endocrine therapy, with consideration of the 6-month supply of endocrine therapy prescribed. **Figure 1** illustrates the cohort entry, induction period, and follow-up considerations.

Covariates

Using the DBCG registry, the ProBe CaRe premenopausal cohort collected information about the first primary breast cancer diagnosis, including demographic, tumor, and treatment characteristics. This information included the date of surgery, type of surgery (mastectomy or breast conserving surgery), age at diagnosis, tumor size, tumor grade, lymph node status, human epidermal growth factor receptor-2 (HER2) receptor expression (available after 2007), stage—derived from tumor size (T), lymph node status (N), and metastases (M)—, radiation therapy, anti-HER2 therapy, and adjuvant chemotherapy. Among baseline patient characteristics, potential confounders include comorbidities (Charlson comorbidity index), socioeconomic status (median household income in tertiles), marital status (single, married), and education (high school, college, or graduate school). Medication persistence—defined as the continued per-protocol use—can be influenced by time-

varying covariates. As such, incident comorbid diagnoses during follow-up, initiation of concomitant medication, and switching from tamoxifen to aromatase inhibitors were treated as potential time-varying confounders.

Statistical Analysis

For descriptive analysis, we calculated the frequencies and proportions of patient demographic factors, tumor characteristics, treatments received, concomitant medications, and comorbidities within strata of tamoxifen early discontinuation status. We then evaluated the association between early discontinuation and recurrence using two complementary approaches.

First, we used pooled logistic regression models to estimate the time-dependent hazard ratios (HRs) and 95% confidence intervals (CI) for the association between early discontinuation of endocrine therapy and breast cancer recurrence.²⁵ The pooled logistic regression models allow for a flexible baseline hazard and produce estimates that approximate the average rate ratio, similar to a Cox proportional hazards model with a time-dependent exposure.²⁶ The exposure is time-varying to allow for treatment discontinuation at different timepoints over the five or more years of prescribed endocrine therapy. We updated the exposure annually after endocrine treatment initiation. We present multivariable-adjusted HRs and 95% CI accounting for potential baseline confounders.

Realizing that the experience of women who discontinue adjuvant endocrine therapy is not likely exchangeable with the experience of women who continue on therapy, for the second approach, we used G-computation to estimate the effect of early discontinuation of tamoxifen therapy on breast cancer recurrence adjusted for baseline tumor, treatment, and patient-level characteristics as well as time-varying

covariates.²⁷ To perform this analysis, we first calculated stabilized time-varying weights for each year of treatment. The weights for each patient were calculated from multivariable logistic regression models to estimate the probability of early discontinuation in that time interval based on baseline characteristics and time-varying factors, namely concomitant medication use and comorbidity diagnoses during follow-up. We used stabilized weights, computed by dividing the probability of discontinuing therapy given baseline characteristics by the probability of discontinuing therapy given baseline characteristics and time-varying covariates.²⁷ These stabilized weights were then used as time-varying weights in a pooled logistic regression model to estimate the HR for the association between early treatment discontinuation and breast cancer recurrence. We calculated the accompanying 95% CI using nonparametric bootstrapping with 50 resamples.²⁸

In a sensitivity analysis, we used a longer period to define early discontinuation. We allowed for 1.5 years between last date of prescription and end of follow-up, still considering a 6-month supply of endocrine therapy. This sensitivity analysis assumes that any event that occurred within one year of stopping endocrine therapy would not be due to early discontinuation of therapy.

Results

Of the 4,503 premenopausal women included in the cohort, 1001 (22%) discontinued endocrine therapy over the course of follow-up (**Table 1**). The annual proportion of patients who discontinued therapy was lowest in the first year (2.6%), and gradually increased each year, culminating in a 6.7% discontinuation proportion in the 5th year of therapy. Among those who discontinued endocrine therapy, 202 (20%) had a recurrence; among those who complete therapy, 388 (11%) had a

recurrence (**Figure 2**). Compared with women who completed endocrine therapy, those who discontinued were less likely to have received chemotherapy (86% vs. 92%) or radiation therapy (49% vs. 55%). Women who discontinued were also more likely to have had a comorbid condition at diagnosis (11% vs 8.4%), have had a lower household income (42% vs. 31%), have been single during follow-up (36% vs. 32%), and have had a high school level of education (22% vs 19%).

In multivariable-adjusted models, early discontinuation of endocrine therapy was associated with an increase in the estimated rate of recurrence (HR=1.63, 95% CI: 1.30, 2.04) [**Table 2**]. Similarly, results from the G-computation approach (using time-varying weights) indicated that women who discontinued endocrine therapy had 1.67 times the estimated rate of recurrence compared with women who continued endocrine therapy (95% CI: 1.25, 2.14). The crude results were comparable to the above approaches, suggesting little confounding by measured baseline or time-varying confounders (HR=1.59, 95% CI: 1.27, 2.00).

The sensitivity analyses, which defined completion of adjuvant endocrine therapy as four years of therapy or continuation of therapy for up to one year before a recurrence, yielded similar, although attenuated estimates (**Table 2**).

Discussion

This study is the first to quantify the effect of early discontinuation of adjuvant endocrine therapy on breast cancer recurrence in a population-based cohort of premenopausal women diagnosed with breast cancer. We report that 22% of premenopausal women discontinued endocrine therapy before completing five years of recommended treatment. The estimated rate of breast cancer recurrence in this study was about 1.7-fold higher among women who discontinued endocrine therapy

compared with those who completed their course of treatment. Among women who did not complete adjuvant endocrine therapy, most (57%) discontinued taking medication in the last two years of treatment.

Trial results have reported that 5 years of tamoxifen therapy, compared with placebo, reduced the risk of recurrence by nearly one-half among premenopausal women diagnosed with ER-positive breast cancer.²⁹ This result suggests that lack of tamoxifen therapy among premenopausal women diagnosed with ER-positive breast cancer would nearly double the risk of recurrence compared with tamoxifen therapy of appropriate duration. A recent systematic review reported that 15%–20% of women discontinued tamoxifen therapy in the first year of therapy and 31%–60% discontinued by the end of 5 years.^{30–34} Although the review primarily included studies of U.S. populations—in which a greater proportion of women than in Denmark discontinue endocrine therapy—the pattern of discontinuation over the first 5 years of therapy is comparable to the pattern observed in our study. A meta-analysis of trials comparing the benefit of 5 years vs 1–2 years of tamoxifen therapy reported 0.82 times the rate of recurrence.²⁹ Therefore the expected increase in the rate of recurrence comparing 2 vs 5 years of tamoxifen therapy would be approximately 1.22 (1/0.82).²⁹ The estimated effect from our study is further from the null than this expectation, likely due to a combination of factors. First, there is a difference in target populations, as the trials were conducted among both pre- and postmenopausal breast cancer patients, whereas our study is restricted to premenopausal women. Second, most women in our study who completed 5 years of tamoxifen therapy continued on therapy, given the change in guidelines from 5 to 10 years of therapy in 2013.³⁵ Third, our study estimated the rate ratio, which will be further from the null than the risk ratio reported from trials. Finally, we excluded

recurrences in the first 1.5 years after diagnosis, which were included in the trial results. This exclusion reduces the number of events, and ratios of rarer events are often larger than ratios of more common events.³⁶ Even though these women would have received some benefit from initiating therapy, evidence clearly supports the need for completion of the 5 years of tamoxifen therapy—and even extending to 10 years—to acquire the full preventive benefit.

Before the end of 5 years of adjuvant endocrine therapy, 22% of women in our cohort discontinued treatment. This estimate is substantially lower than those from previous studies conducted in the U.S.;¹⁹ however, the proportion is slightly larger than the corresponding 16% of postmenopausal women who discontinued treatment reported in an earlier Danish study.²⁰ This difference may be expected because some previous studies have shown that younger women are less likely to complete adjuvant endocrine therapy than older women.¹⁰ Similar to U.S.-based studies, we observed that women who discontinued therapy were more likely to report a lower household income, be unmarried, and have high school rather than third-level education, compared with women who completed therapy.³⁷ Income, education, and healthcare access gaps are more pronounced in the U.S. than in Denmark, which is also correlated with healthcare access, and may partially explain the differences observed between our study and the review.^{38,39} The BIG 1-98 study—a double-blind trial that randomized postmenopausal women to tamoxifen or aromatase inhibitors—reported tamoxifen discontinuation rates that were consistent with those observed in the current study (19%).⁴⁰ In BIG 1-98, among postmenopausal women who were randomized to the tamoxifen arm, adverse events such as thromboembolic complications were the most common causes for treatment discontinuation.⁴⁰ In the clinical setting, women who are at risk for or who

experience thromboembolic complications are eligible to switch to aromatase inhibitors, which carry about half the risk of thrombotic events compared with tamoxifen.^{41,42} Still, adverse side effects are often reported as a reason that patients stop taking tamoxifen.^{12,43}

Our results are comparable to those observed in other studies that were not restricted to premenopausal women. A study using a Kaiser Permanente patient database reported that early discontinuation was associated with higher all-cause mortality (HR 1.26, 95% CI: 1.09, 1.46).⁴⁴ In a Danish population-based cohort of postmenopausal women diagnosed with breast cancer between 1996 and 2004, those who discontinued therapy had an increased hazard of recurrence (HR=1.45, 95% CI: 1.14, 1.85).²⁰ The associations observed in our study are more pronounced, underscoring the importance of endocrine therapy completion among premenopausal women to prevent or delay a recurrence.

There are several limitations to consider. First, as with all population-based studies of medication use, we had information on prescriptions dispensed at each follow-up visit but could not be certain that endocrine therapy was taken as prescribed. It is likely that women who discontinued therapy before the recommended 5 years of treatment were also less likely to take the medication as indicated, even when they filled a prescription. Second, since 2013, the Danish guidelines recommend that tamoxifen be prescribed to premenopausal women for up to 10 years.^{7,35} We observed that, among women who completed at least 5 years of adjuvant endocrine therapy, 11% (n=405) completed 10 years of treatment, and 71% (n=2,565) continued taking medication for more than 5 years. The proportion of women receiving more than 5 years of adjuvant endocrine therapy increased as a

function of year of diagnosis between 2002 and 2011. Given that our study population included women diagnosed with breast cancer through 2011, and with follow-up available until August 31, 2019, we were unable to examine the effect of discontinuation of tamoxifen therapy at 5 years compared with continuation for up to 10 years. Third, we were unable to capture menopausal transition. We did observe that 40% of those who completed therapy and 30% of those who did not complete therapy switched from tamoxifen to an aromatase inhibitor. This suggests that a large proportion of women transitioned to menopause, but women may also switch type of therapy due to side effects. Finally, women who discontinued therapy were more likely to have had a recurrence within the first 5 years following their diagnosis compared with those who completed therapy (70% vs. 52%). This may reflect an innate resistance to adjuvant endocrine therapy.⁴⁵⁻⁴⁷ We excluded women with less than 1.5 years of follow-up or a recurrent event within the first 1.5 years following diagnosis to help mitigate this potential bias. Still, the hazard of recurrence is highest in the first 2–3 years after diagnosis, and the prevalence of discontinuation increases over time.⁴⁸ The combination of eliminating the first 1.5 years of follow-up and a discontinuation proportion that increases over time suggests that the association observed in this study pertains to recurrences that occur after the initial high hazard period. If we assume that recurrences in the high hazard period reflect an innate resistance of the cancer rather than persistence of endocrine therapy, then our results are unbiased. However, future analyses might consider analyzing the results stratified based on year of discontinuation to look specifically at the influence of endocrine therapy on this early period of high recurrence hazard.

In conclusions, our results highlight the importance of clinical follow-up and behavioral interventions that support persistence of adjuvant endocrine therapy to prevent a recurrent event.

1. Carey LA, Perou CM, Livasy CA, et al. Race, Breast Cancer Subtypes, and Survival in the Carolina Breast Cancer Study. *JAMA*. 2006;295(21):2492-2502. doi:10.1001/jama.295.21.2492
2. Gradishar WJ, Anderson BO, Balassanian R, et al. Invasive Breast Cancer Version 1.2016, NCCN Clinical Practice Guidelines in Oncology. *J Natl Compr Cancer Netw JNCCN*. 2016;14(3):324-354. doi:10.6004/jnccn.2016.0037
3. Buckley MM-T, Goa KL. Tamoxifen. *Drugs*. 1989;37(4):451-490. doi:10.2165/00003495-198937040-00004
4. Jensen M-B, Laenkholm A-V, Offersen BV, et al. The clinical database and implementation of treatment guidelines by the Danish Breast Cancer Cooperative Group in 2007-2016. *Acta Oncol Stockh Swed*. 2018;57(1):13-18. doi:10.1080/0284186X.2017.1404638
5. Møller S, Jensen M-B, Ejlersen B, et al. The clinical database and the treatment guidelines of the Danish Breast Cancer Cooperative Group (DBCG); its 30-years experience and future promise. *Acta Oncol Stockh Swed*. 2008;47(4):506-524. doi:10.1080/02841860802059259
6. Early Breast Cancer Trialists' Collaborative Group. Tamoxifen for early breast cancer: an overview of the randomised trials. *The Lancet*. 1998;351(9114):1451-1467. doi:10.1016/S0140-6736(97)11423-4
7. Davies C, Pan H, Godwin J, et al. Long-term effects of continuing adjuvant tamoxifen to 10 years versus stopping at 5 years after diagnosis of oestrogen receptor-positive breast cancer: ATLAS, a randomised trial. *Lancet Lond Engl*. 2013;381(9869):805-816. doi:10.1016/S0140-6736(12)61963-1
8. Chirgwin JH, Giobbie-Hurder A, Coates AS, et al. Treatment Adherence and Its Impact on Disease-Free Survival in the Breast International Group 1-98 Trial of Tamoxifen and Letrozole, Alone and in Sequence. *J Clin Oncol Off J Am Soc Clin Oncol*. 2016;34(21):2452-2459. doi:10.1200/JCO.2015.63.8619
9. Wulaningsih W, Garmo H, Ahlgren J, et al. Determinants of non-adherence to adjuvant endocrine treatment in women with breast cancer: the role of comorbidity. *Breast Cancer Res Treat*. 2018;172(1):167-177. doi:10.1007/s10549-018-4890-z
10. Font R, Espinas JA, Barnadas A, et al. Influence of adherence to adjuvant endocrine therapy on disease-free and overall survival: a population-based study in Catalonia, Spain. *Breast Cancer Res Treat*. 2019;175(3):733-740. doi:10.1007/s10549-019-05201-3

11. DiMatteo MR. Social support and patient adherence to medical treatment: a meta-analysis. *Health Psychol Off J Div Health Psychol Am Psychol Assoc.* 2004;23(2):207-218. doi:10.1037/0278-6133.23.2.207
12. Lash TL, Fox MP, Westrup JL, Fink AK, Silliman RA. Adherence to tamoxifen over the five-year course. *Breast Cancer Res Treat.* 2006;99(2):215-220. doi:10.1007/s10549-006-9193-0
13. DiMatteo MR, Lepper HS, Croghan TW. Depression is a risk factor for noncompliance with medical treatment: meta-analysis of the effects of anxiety and depression on patient adherence. *Arch Intern Med.* 2000;160(14):2101-2107. doi:10.1001/archinte.160.14.2101
14. Wassermann J, Gelber SI, Rosenberg SM, et al. Nonadherent behaviors among young women on adjuvant endocrine therapy for breast cancer. *Cancer.* 2019;125(18):3266-3274. doi:10.1002/cncr.32192
15. Sedjo RL, Devine S. Predictors of non-adherence to aromatase inhibitors among commercially insured women with breast cancer. *Breast Cancer Res Treat.* 2011;125(1):191-200. doi:10.1007/s10549-010-0952-6
16. Wigertz A, Ahlgren J, Holmqvist M, et al. Adherence and discontinuation of adjuvant hormonal therapy in breast cancer patients: a population-based study. *Breast Cancer Res Treat.* 2012;133(1):367-373. doi:10.1007/s10549-012-1961-4
17. Cella D, Fallowfield LJ. Recognition and management of treatment-related side effects for breast cancer patients receiving adjuvant endocrine therapy. *Breast Cancer Res Treat.* 2008;107(2):167-180. doi:10.1007/s10549-007-9548-1
18. Results of the ATAC (Arimidex, Tamoxifen, Alone or in Combination) trial after completion of 5 years' adjuvant treatment for breast cancer. *The Lancet.* 2005;365(9453):60-62. doi:10.1016/S0140-6736(04)17666-6
19. Murphy CC, Bartholomew LK, Carpentier MY, Bluethmann SM, Vernon SW. Adherence to adjuvant hormonal therapy among breast cancer survivors in clinical practice: a systematic review. *Breast Cancer Res Treat.* 2012;134(2):459-478. doi:10.1007/s10549-012-2114-5
20. Ejlertsen B, Jensen M-B, Mouridsen HT, Danish Breast Cancer Cooperative Group. Excess mortality in postmenopausal high-risk women who only receive adjuvant endocrine therapy for estrogen receptor positive breast cancer. *Acta Oncol Stockh Swed.* 2014;53(2):174-185. doi:10.3109/0284186X.2013.850738
21. Schmidt M, Schmidt SAJ, Adelborg K, et al. The Danish health care system and epidemiological research: from health care contacts to database records. *Clin Epidemiol.* 2019;11:563-591. doi:10.2147/CLEP.S179083
22. Collin LJ, Cronin-Fenton DP, Ahern TP, et al. Cohort Profile: the Predictors of Breast Cancer Recurrence (ProBe CaRE) Premenopausal Breast Cancer Cohort Study in Denmark. *BMJ Open.* 2018;8(7):e021805. doi:10.1136/bmjopen-2018-021805
23. Schmidt M, Pedersen L, Sørensen HT. The Danish Civil Registration System as a tool in epidemiology. *Eur J Epidemiol.* 2014;29(8):541-549. doi:10.1007/s10654-014-9930-3

24. Blichert-Toft M, Christiansen P, Mouridsen HT. Danish Breast Cancer Cooperative Group--DBCG: History, organization, and status of scientific achievements at 30-year anniversary. *Acta Oncol Stockh Swed*. 2008;47(4):497-505. doi:10.1080/02841860802068615
25. Ngwa JS, Cabral HJ, Cheng DM, et al. A comparison of time dependent Cox regression, pooled logistic regression and cross sectional pooling with simulations and an application to the Framingham Heart Study. *BMC Med Res Methodol*. 2016;16(1):148. doi:10.1186/s12874-016-0248-6
26. Hernán MÁ, Brumback B, Robins JM. Marginal Structural Models to Estimate the Causal Effect of Zidovudine on the Survival of HIV-Positive Men. *Epidemiology*. 2000;11(5):561-570.
27. Hernan MA, Robins JM. *Causal Inference*. CRC Boca Raton, FL; 2010.
28. Efron B. Nonparametric estimates of standard error: The jackknife, the bootstrap and other methods. *Biometrika*. 1981;68(3):589-599.
29. Early Breast Cancer Trialists' Collaborative Group (EBCTCG). Effects of chemotherapy and hormonal therapy for early breast cancer on recurrence and 15-year survival: an overview of the randomised trials. *Lancet Lond Engl*. 2005;365(9472):1687-1717. doi:10.1016/S0140-6736(05)66544-0
30. Huiart L, Dell'Aniello S, Suissa S. Use of tamoxifen and aromatase inhibitors in a large population-based cohort of women with breast cancer. *Br J Cancer*. 2011;104(10):1558-1563. doi:10.1038/bjc.2011.140
31. Owusu C, Buist DSM, Field TS, et al. Predictors of tamoxifen discontinuation among older women with estrogen receptor-positive breast cancer. *J Clin Oncol Off J Am Soc Clin Oncol*. 2008;26(4):549-555. doi:10.1200/JCO.2006.10.1022
32. van Herk-Sukel MPP, van de Poll-Franse LV, Voogd AC, Nieuwenhuijzen GAP, Coebergh JWW, Herings RMC. Half of breast cancer patients discontinue tamoxifen and any endocrine treatment before the end of the recommended treatment period of 5 years: a population-based analysis. *Breast Cancer Res Treat*. 2010;122(3):843-851. doi:10.1007/s10549-009-0724-3
33. Rae JM, Sikora MJ, Henry NL, et al. Cytochrome P450 2D6 activity predicts discontinuation of tamoxifen therapy in breast cancer patients. *Pharmacogenomics J*. 2009;9(4):258-264. doi:10.1038/tpj.2009.14
34. Huiart L, Bouhnik A-D, Rey D, et al. Early discontinuation of tamoxifen intake in younger women with breast cancer: is it time to rethink the way it is prescribed? *Eur J Cancer Oxf Engl 1990*. 2012;48(13):1939-1946. doi:10.1016/j.ejca.2012.03.004
35. Gradishar WJ, Anderson BO, Balassanian R, et al. NCCN Guidelines Insights: Breast Cancer, Version 1.2017. *J Natl Compr Cancer Netw JNCCN*. 2017;15(4):433-451. doi:10.6004/jnccn.2017.0044
36. Rothman KJ, Poole C. A strengthening programme for weak associations. *Int J Epidemiol*. 1988;17(4):955-959. doi:10.1093/ije/17.4.955

37. Ursem CJ, Bosworth HB, Shelby RA, Hwang W, Anderson RT, Kimmick GG. Adherence to Adjuvant Endocrine Therapy for Breast Cancer: Importance in Women with Low Income. *J Womens Health*. 2015;24(5):403-408. doi:10.1089/jwh.2014.4982
38. Egger P, Sengenberger W, Simoni M, Vargha C. *Decent Work in Denmark: Employment, Social Efficiency and Economic Security*. International Labour Organization; 2003.
39. Saez E, Zucman G. *Wealth Inequality in the United States since 1913: Evidence from Capitalized Income Tax Data*. National Bureau of Economic Research; 2014. doi:10.3386/w20625
40. Breast International Group (BIG) 1-98 Collaborative Group, Thürlimann B, Keshaviah A, et al. A comparison of letrozole and tamoxifen in postmenopausal women with early breast cancer. *N Engl J Med*. 2005;353(26):2747-2757. doi:10.1056/NEJMoa052258
41. Coombes RC, Hall E, Gibson LJ, et al. A Randomized Trial of Exemestane after Two to Three Years of Tamoxifen Therapy in Postmenopausal Women with Primary Breast Cancer. *N Engl J Med*. 2004;350(11):1081-1092. doi:10.1056/NEJMoa040331
42. Hernandez RK, Sørensen HT, Pedersen L, Jacobsen J, Lash TL. Tamoxifen treatment and risk of deep venous thrombosis and pulmonary embolism. *Cancer*. 2009;115(19):4442-4449. doi:10.1002/cncr.24508
43. Grunfeld EA, Hunter MS, Sikka P, Mittal S. Adherence beliefs among breast cancer patients taking tamoxifen. *Patient Educ Couns*. 2005;59(1):97-102. doi:10.1016/j.pec.2004.10.005
44. Hershman DL, Shao T, Kushi LH, et al. Early discontinuation and non-adherence to adjuvant hormonal therapy are associated with increased mortality in women with breast cancer. *Breast Cancer Res Treat*. 2011;126(2):529-537. doi:10.1007/s10549-010-1132-4
45. Katzenellenbogen JA, Mayne CG, Katzenellenbogen BS, Greene GL, Chandarlapaty S. Structural underpinnings of oestrogen receptor mutations in endocrine therapy resistance. *Nat Rev Cancer*. 2018;18(6):377-388. doi:10.1038/s41568-018-0001-z
46. Ali S, Coombes RC. Endocrine-responsive breast cancer and strategies for combating resistance. *Nat Rev Cancer*. 2002;2(2):101-112. doi:10.1038/nrc721
47. Musgrove EA, Sutherland RL. Biological determinants of endocrine resistance in breast cancer. *Nat Rev Cancer*. 2009;9(9):631-643. doi:10.1038/nrc2713
48. Colleoni M, Sun Z, Price KN, et al. Annual Hazard Rates of Recurrence for Breast Cancer During 24 Years of Follow-Up: Results From the International Breast Cancer Study Group Trials I to V. *J Clin Oncol*. 2016;34(9):927-935. doi:10.1200/JCO.2015.62.3504

Figure Legends

Figure 1. Illustration of cohort entry (surgery date), induction period (1.5 years), initiation of follow-up (T_0), time-varying exposure status, and follow-up for study cohort.

Figure 2: Kaplan-Meier survival functions by early discontinuation or completion of endocrine therapy among 4,600 premenopausal women diagnosed with breast cancer in Denmark (2002–2011) in the ProBe CaRe cohort.

Tables

TABLE 1. Distribution of clinical and tumor characteristics by early discontinuation versus completion of tamoxifen therapy among 4,503 premenopausal women with ER-positive breast cancer in a population-based cohort of premenopausal women diagnosed with first primary breast cancer, ProBe CaRe study (2002–2011).

Patient and tumor characteristics	Early Discontinuation		Complete Therapy	
	N	%	N	%
Total	1001	(22)	3502	(78)
Recurrence				
Yes	202	(20)	388	(11)
No	799	(80)	3144	(89)
Switched from Tamoxifen to AI				
TAM to AI	306	(30)	1502	(42)
TAM only	705	(70)	2087	(58)
Age at diagnosis				
<35	64	(6.4)	146	(4.2)
35–39	108	(11)	366	(10)
40–44	228	(23)	877	(25)
45–49	360	(36)	1276	(36)
50+	241	(24)	837	(24)
Stage at diagnosis				
Stage I	277	(28)	885	(25)
Stage II	506	(51)	1935	(55)
Stage III	214	(21)	664	(19)
Tumor Diameter				
< 2cm	514	(51)	1834	(52)
2 to <5cm	436	(44)	1488	(42)
≥ 5cm	49	(4.9)	180	(5.1)
Number of metastatic lymph nodes				
0	392	(39)	1280	(37)
1	235	(24)	903	(26)
2	114	(11)	455	(13)
3+	258	(26)	854	(24)
Histologic grade				
I	199	(21)	742	(21)

	II	536	(57)	1815	(57)
	III	204	(22)	708	(22)
	Unknown	62		237	
HER2 status					
	HER2-	591	(81)	2243	(83)
	HER2+	141	(19)	455	(17)
	Unknown/Not measured	269		804	
Type of primary surgery					
	Mastectomy	436	(44)	1549	(44)
	Lumpectomy	565	(56)	1953	(56)
Chemotherapy					
	Yes	858	(86)	3219	(92)
	No	143	(14)	283	(8.1)
Radiation therapy					
	Yes	491	(49)	1928	(55)
	No	514	(51)	1574	(45)
Anti-HER2 therapy					
	Yes	82	(8.2)	383	(11)
	No	919	(92)	3119	(89)
Charlson Comorbidity Score					
	1+	111	(11)	292	(8.4)
	0	890	(89)	3210	(92)
Comorbidities during treatment					
	1+	95	(9.5)	349	(10)
	0	906	(91)	3153	(90)
Statin Use					
	Yes	69	(6.9)	185	(5.6)
	No	932	(93)	3317	(95)
Medication Initiation during treatment					
	Yes	610	(61)	2029	(58)
	No	391	(39)	1473	(42)
Socioeconomic Factors					
Household Income					
	3rd tertile	281	(28)	1223	(35)
	2nd tertile	297	(30)	1206	(34)
	1st tertile	418	(42)	1068	(31)
Marital Status					
	Married	637	(64)	2406	(69)
	Single	364	(36)	1096	(31)
Education					
	Higher Education	345	(35)	1408	(41)
	College	426	(43)	1408	(41)
	High School	219	(22)	659	(19)

Abbreviations: AI=aromatase inhibitors; HER2= human epidermal growth factor receptor 2; TAM=tamoxifen

Table 2: Multivariable analysis and sensitivity analysis for the association between early treatment discontinuation and breast cancer recurrence among 4,503 premenopausal women diagnosed with breast cancer in Denmark (2002–2011) in the ProBe CaRe cohort.

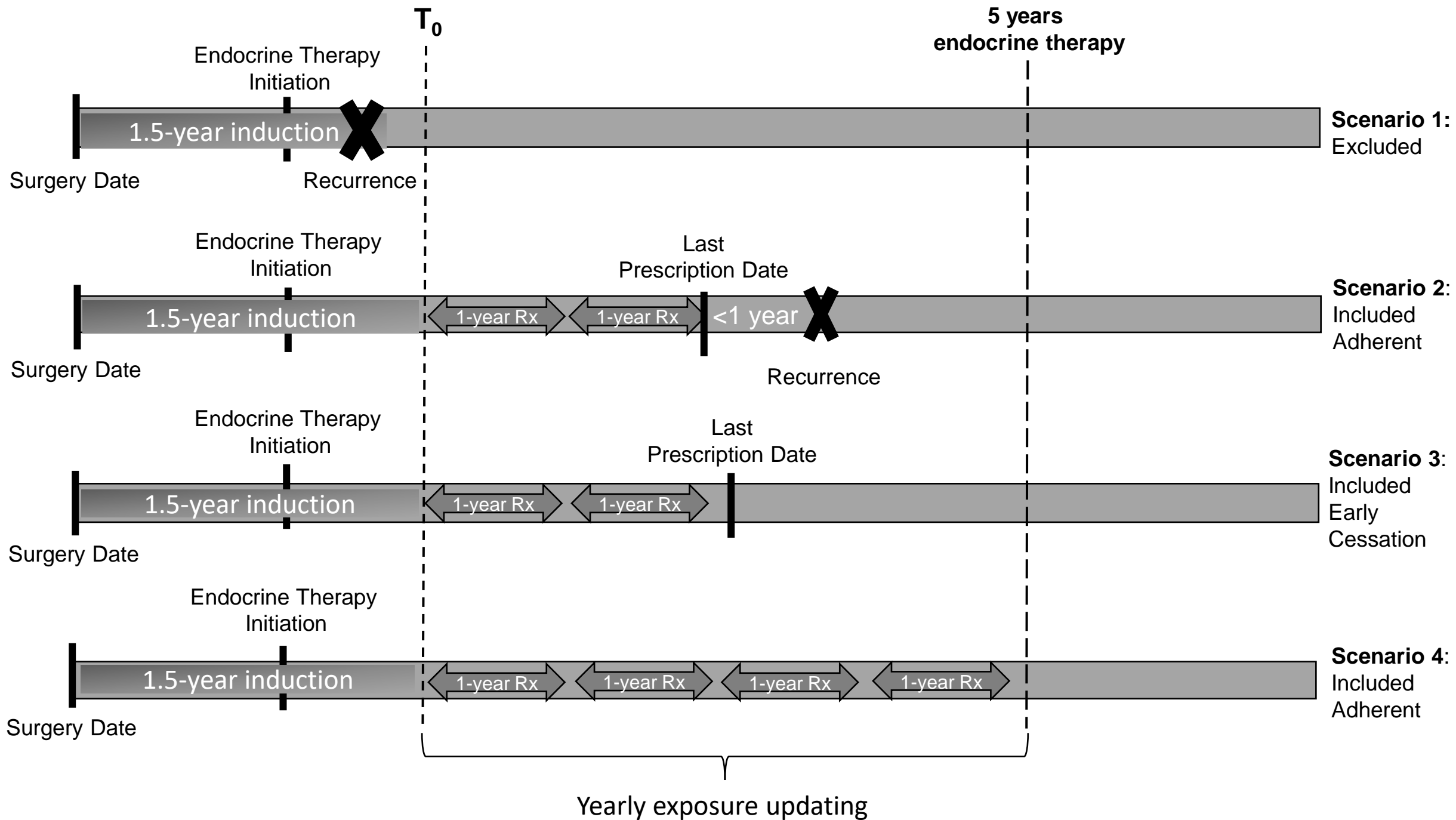
Model	Multivariable Analysis		Sensitivity Analysis ^a	
	HR	95%CI	HR	95%CI
Unadjusted	1.59	(1.27, 2.00)	1.44	1.12, 1.83)
Adjusted ^b	1.63	(1.30, 2.04)	1.49	(1.15, 1.92)
G Computation ^c	1.67	(1.25, 2.14)	1.41	(1.15, 1.67)

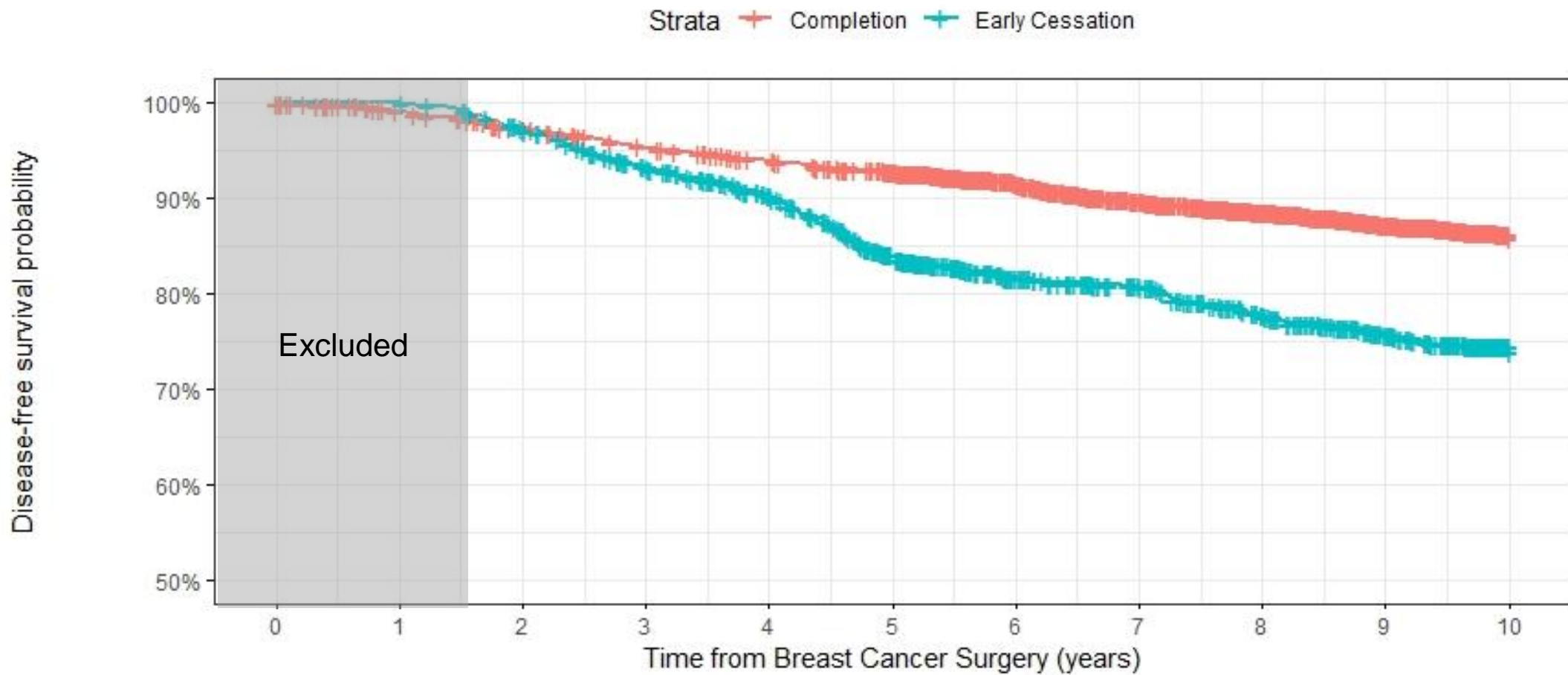
^aAllows 1.5 years from last prescription and end of follow-up

^bBaseline confounders include: age, stage, surgery type, radiation therapy, chemotherapy, statin use, comorbidity index, income, marital status, and education

^cTime-varying confounders include: switch from tamoxifen to aromatase inhibitors, new comorbidity diagnosis, new medication use

Abbreviations: HR=hazard ratio; CI=confidence interval





Number at risk

Strata	0	1	2	3	4	5	6	7	8	9	10
+ Completion	3589	3533	3454	3370	3307	3231	2938	2726	2466	1970	1265
+ Early Cessation	1011	1011	971	908	839	709	579	522	457	379	238

Time from Breast Cancer Surgery (years)