

SUPPLEMENTARY MATERIALS

Supplementary Table 1. Description of databases included in the study

Country	Name	Description
US	HealthVerity	This HealthVerity derived data set contains de-identified patient information with an antibody and/or diagnostic test for COVID-19 linked to all available Medical Claims and Pharmacy Data from select private data providers participating in the HealthVerity marketplace.
US	Optum EHR	Optum's Electronic Health Record data, a medical records database for patients receiving a COVID-19 diagnosis record or lab test for SARS-CoV-2.
Spain	Information System for Research in Primary Care (SIDIAP)	The Information System for Research in Primary Care (SIDIAP; www.sidiap.org) is a primary care records database that covers approximately 7 million people, equivalent to an 80% of the population of Catalonia, North-East Spain. Healthcare is universal and tax-payer funded in the region, and primary care physicians are gatekeepers for all care and responsible for repeat prescriptions.
France	LPD	Computerised network of physicians including GPs who contribute to a centralised database of anonymised patient EMR. Currently, >1200 GPs from 400 practices are contributing to the database covering 7.8M patients in France.
US	IQVIA Open Claims	Pre-adjudicated claims covering over 300 Million lives (~80% of the US) collected from office-based physicians and specialists via office management software and clearinghouse switch sources for the purpose of reimbursement.
US	Columbia University Irving Medical Center	The clinical data warehouse of NewYork-Presbyterian Hospital/Columbia University Irving Medical Center, New York, NY, based on its current and previous electronic health record systems, with data spanning over 30 years and including over 6 million patients

Supplementary Table 2. Definitions and codes used to identify persons with a COVID-19 diagnosis record or a SARS-CoV-2 positive test with at least 365d prior observation

The below tables summarize the concepts used to identify patients tested for SARS-CoV-2 and patients tested positive for SARS-CoV2. The full description of the logic used is provided at <https://atlas.ohdsi.org/#/cohortdefinition/200> for *diagnosed* and <https://atlas.ohdsi.org/#/cohortdefinition/197> for *hospitalized* cohorts.

COVID-19 conditions

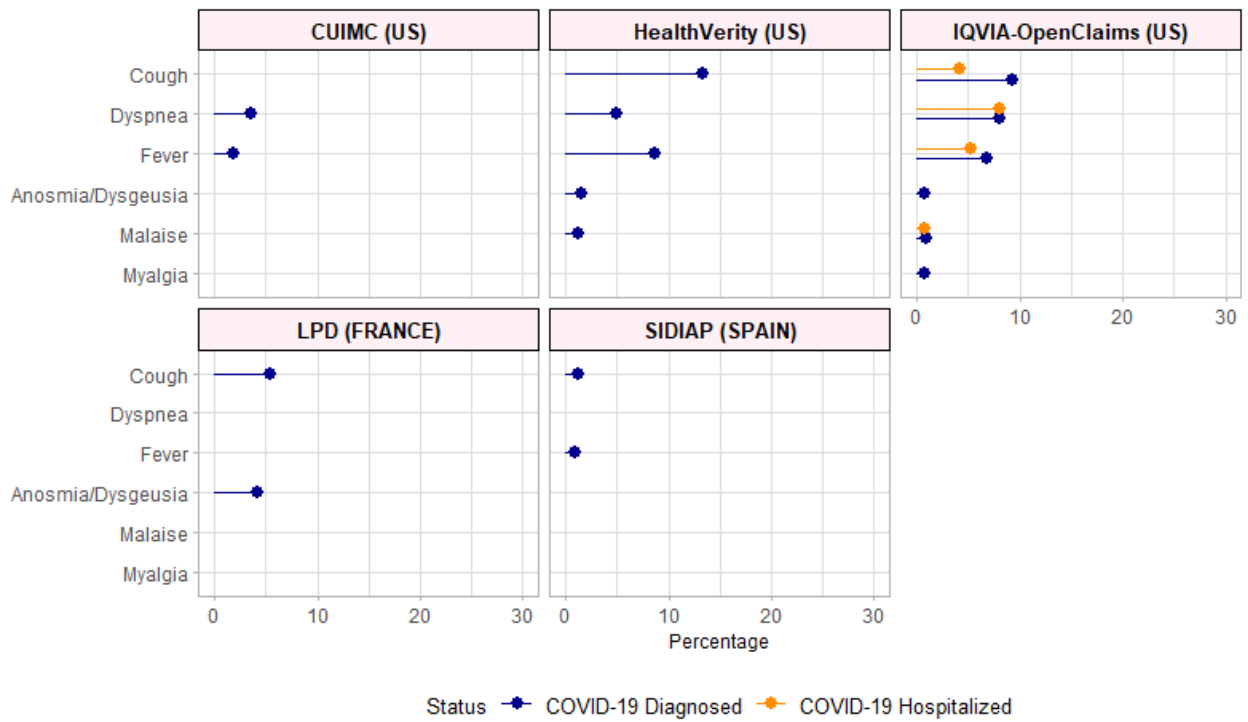
Id	Name	Vocabulary
439676	Coronavirus infection	SNOMED
4100065	Disease due to Coronaviridae	SNOMED
37311060	Suspected disease caused by 2019-nCoV	SNOMED
37311061	Disease caused by 2019-nCoV	SNOMED

COVID-19 specific test positive

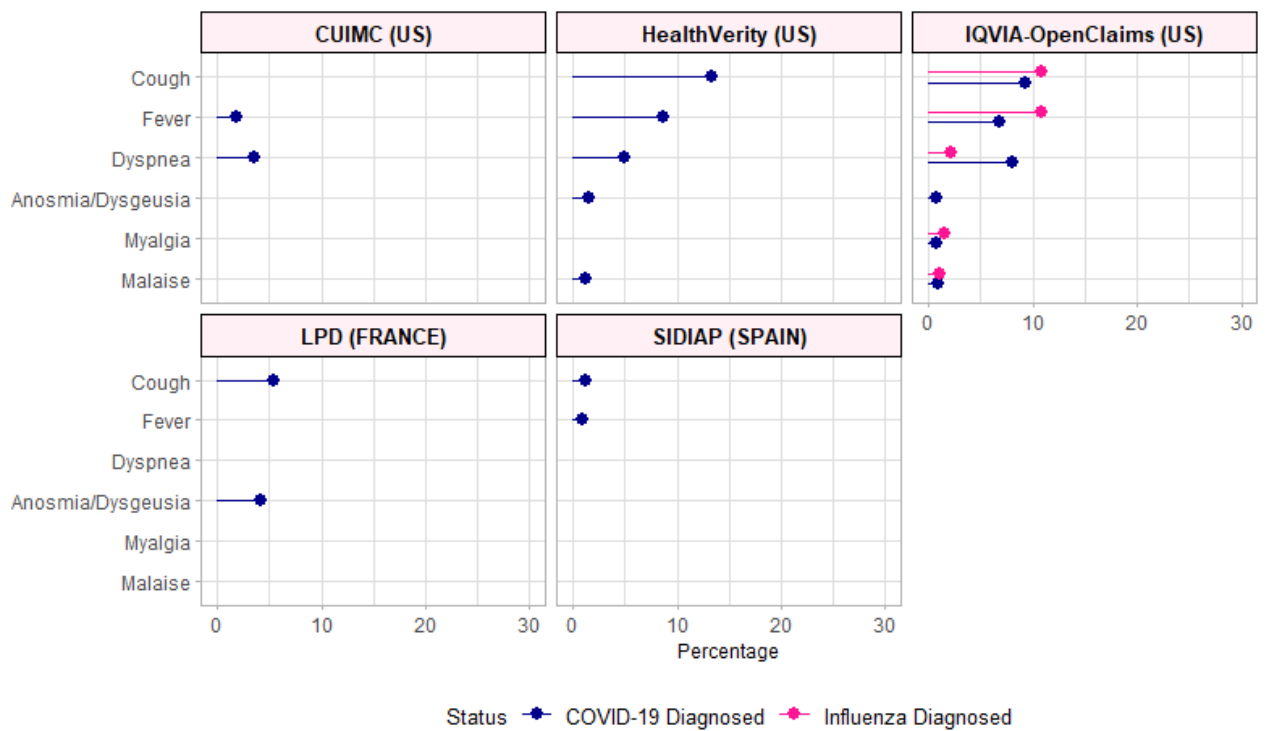
Id	Name	Vocabulary
37310282	2019 novel coronavirus detected	SNOMED
37310281	2019 novel coronavirus not detected*	SNOMED
756055	Measurement of Severe acute respiratory syndrome coronavirus 2 (SARS-CoV-2)	OMOP Extension

*used to only include measurements have a value equal detected, positive or present

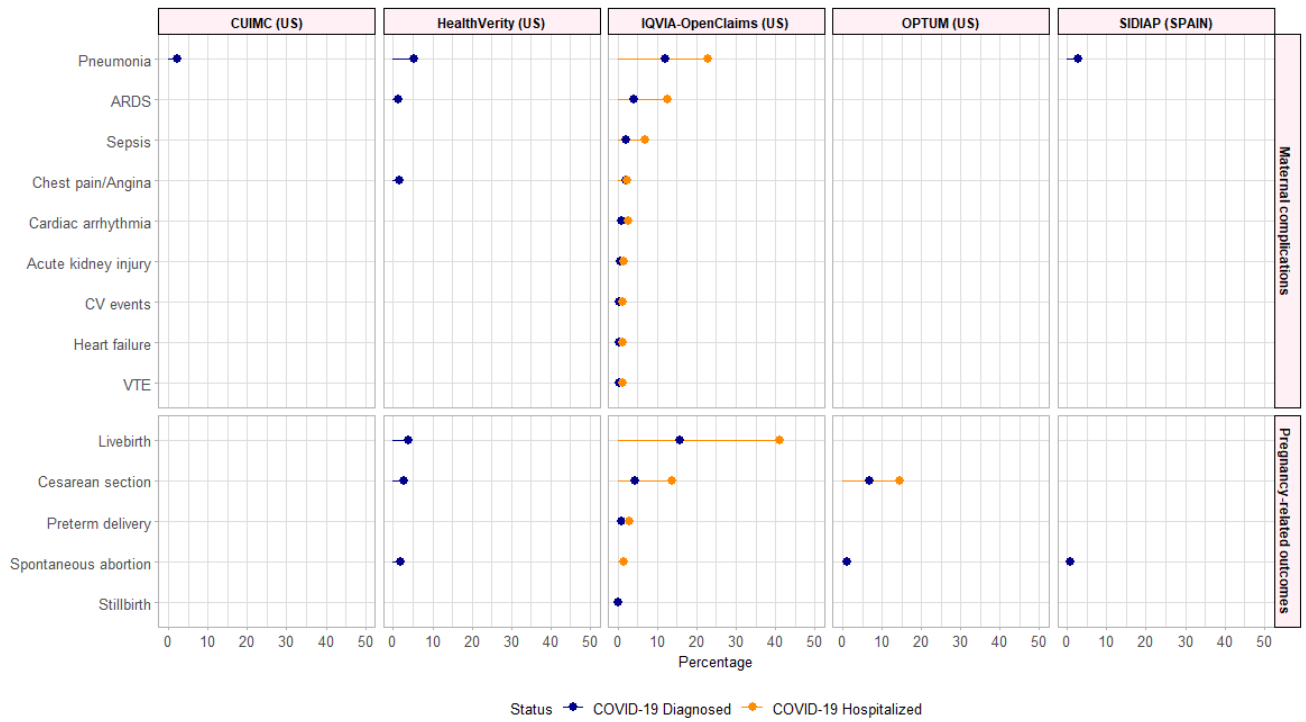
Supplementary Figure 1a. COVID-19 symptoms at index date amongst pregnant women diagnosed versus hospitalized with COVID-19 across all databases



Supplementary Figure 1b. COVID-19 symptoms at index date amongst pregnant women diagnosed with COVID-19 versus diagnosed with seasonal influenza across all databases



Supplementary Figure 2a. Maternal complications and pregnancy-related outcomes amongst women diagnosed versus hospitalized with COVID-19 across all databases



Supplementary Figure 2b. Maternal complications and pregnancy-related outcomes amongst women diagnosed with COVID19 versus diagnosed with influenza across all databases

