

Mental health service activity during COVID-19 lockdown among individuals with learning disabilities: South London and Maudsley data on services and mortality from January to July 2020

Evangelia Martin^{1,2}, Eleanor Nuzum^{1,2}, Matthew Broadbent², Robert Stewart^{1,2}.

¹King's College London (Institute of Psychiatry, Psychology and Neuroscience), London, UK

²South London and Maudsley NHS Foundation Trust, London, UK

Abstract

The lockdown and social distancing policy imposed due to the COVID-19 pandemic is likely to have had a widespread impact on mental healthcare service provision and use. Previous reports from the South London and Maudsley NHS Trust (SLaM; a large mental health service provider for 1.2m residents in South London) highlighted a shift to virtual contacts among those accessing community mental health and home treatment teams and an increase in deaths over the pandemic's first wave. However, there is a need to quantify this for individuals with particular vulnerabilities, including those with learning disabilities. Taking advantage of the Clinical Record Interactive Search (CRIS) data resource with 24-hourly updates of electronic mental health records data, this paper describes daily caseloads and contact numbers (face-to-face and virtual) for individuals with learning disabilities across community, specialist, crisis and inpatient services. The report focussed on the period 1st January to 31st July 2020. We also report on daily accepted and discharged trust referrals, total trust caseloads and daily inpatient admissions and discharges for individuals with learning disabilities. In addition, daily deaths are described for all current and previous SLaM service users with learning disabilities over this period. In summary, comparing periods before and after 16th March 2020 there was a shift from face-to-face contacts to virtual contacts across all teams. The largest declines in caseloads and total contacts were seen in Home Treatment Team, Liaison/A&E and Older Adult teams. Reduced accepted referrals and inpatient admissions were observed and there was an 103% increase in average daily deaths in the period after 16th March, compared to the period 1st

January to 15th March (or a 282% increase if the 2-month period from 16th March to 15th May was considered alone).

Background

The COVID-19 pandemic has presented unique challenges for mental healthcare provision due to a combination of factors, including the impact of the virus itself, the impact of social distancing policies on delivery of mental healthcare, as well as potential psychological effects of social distancing restrictions. Mental healthcare challenges have included the increased vulnerability of its patients, already-reduced life expectancies, pre-existing problems in healthcare access, increased staff sickness and isolation, COVID-19 infections (suspected or confirmed) across inpatient and outpatient services, and the need to minimize face-to-face contacts (1). Impacts may be higher for people with learning disabilities, due to changes in healthcare provision and increased physical and mental health multimorbidity. However, these have received little description to date.

We have previously reported on the mental healthcare impact of the UK COVID-19 pandemic via the Clinical Record Interactive Search (CRIS) data platform which receives 24-hourly updates from its source electronic mental health records. Previous pandemic era reports are listed on <https://www.maudsleybrc.nihr.ac.uk/facilities/clinical-record-interactive-search-cris/covid-19-publications/>. This has included a sizeable shift from face-to-face to virtual contacts in community mental health teams and home treatment teams, as well as a decrease in caseloads and total contacts in home treatment teams (2). We are seeking to extend this analysis to groups who might have specific needs and service use characteristics that might not be well reflected in Trust-wide data. This report focuses on service users with diagnosed learning disabilities.

Methods

The Biomedical Research Centre (BRC) Case Register at the South London and Maudsley NHS Foundation Trust (SLaM) has been described previously (3;4). SLaM serves a geographic catchment of four south London boroughs (Croydon, Lambeth, Lewisham, Southwark) with a

population of around 1.2 million residents and has used a fully electronic health record (EHR) across all its services since 2006. SLAM's BRC Case Register was set up in 2008, providing researcher access to de-identified data from SLAM's EHR via the Clinical Record Interactive Search (CRIS) platform and within a robust security model and governance framework (5). CRIS has been extensively developed over the last 10 years with a range of external data linkages and natural language processing resources (6). CRIS is updated from SLAM's EHR every 24 hours and thus provides relatively 'real-time' data. SLAM's EHR is itself immediately updated every time an entry is made, which include date-stamped fields indicating patient contacts ('events') and those indicating acceptance of a referral or a discharge from a given service (or SLAM care more generally). Mortality in the complete EHR (i.e. all SLAM patients with records, past or present) is ascertained weekly through automated checks of National Health Service (NHS) numbers (a unique identifier used in all UK health services) against a national spine; this provides confirmation of date of death but no further information (e.g. on recorded causes). CRIS has received approval as a data source for secondary analyses (Oxford Research Ethics Committee C, reference 18/SC/0372) and has supported over 200 peer reviewed publications to date

Activity and caseload data were extracted via CRIS and enumerated for every day from 1st January 2020 to 31st July 2020. The focus of this report is on clinical activity and mortality of individuals diagnosed with learning disability; this was defined on the basis of ICD-10 codes F7x, F84x or F90x within structured fields for primary or secondary diagnoses in the source electronic health record (mandatory fields for all active caseloads), supplemented by 'leaning dis*' applied to output from a bespoke natural language processing algorithm developed within CRIS to extract text associated with diagnostic statements recorded in open text fields (<https://www.maudsleybrc.nihr.ac.uk/facilities/clinical-record-interactive-search-cris/cris-natural-language-processing/>). This supplementary approach allowed for the fact that learning disability is under-reported in coded diagnostic fields in favour of other co-occurring diagnoses.

Clinical activity was measured across 6 service areas: working age community Adult Mental Health Services (AMHS), Child and Adolescent Mental Health Services (CAMHS), Mental Health of Older Adults (MHOA), Early Intervention in Psychosis (EIP), Home Treatment Team

and crisis services (HTT), and Liaison Accident & Emergency (A&E) services. Total Trust caseloads, number of accepted and discharged Trust referrals, number of inpatient admissions and discharges, and number of inpatients (total and those specifically under a Mental Health Act order) were also extracted for the client group. For AMHS, CAMHS, MHOA, EIP, HTT, Liaison, daily caseloads were calculated by ascertaining patients who were receiving active care from the service on a given day, based on the date a referral to that service was recorded as accepted to the point a discharge was made from that service. Daily contact numbers were ascertained from recorded 'events' (i.e. standard case note entries) for that service and were divided into the following groups according to structured compulsory meta-data fields for that event in the EHR: i) face-to-face contacts attended; ii) virtual contacts attended (by email, fax, mail, phone, online, or video link); iii) total contacts, as the sum of these two; iv) did not attend (DNA).

Finally, mortality data (number of deaths for all patients with learning disability with SLAM records) were extracted for the period in question. Data extractions for this manuscript were carried out on 10th September 2020.

Descriptive data were generated daily for the above parameters and displayed graphically. Weekend days and national holidays were omitted for AMHS, CAMHS, MHOA, and EIP contacts. For comparisons between time periods, 16th March 2020 was chosen, as the date social distancing policy was announced by the UK government. Mean (SD) activity levels were described before and after this date and percentage changes quantified.

Results

Mean daily statistics before and after 16th March and proportional changes are displayed in Table 1. Weekly deaths in the period from 1st January to 31st July are displayed in Figure 1. Mean daily deaths for individuals with learning disabilities significantly increased by 103% in the period after 16th March compared to the period between 1st January to 15th March, although the primary excess was observed up to mid-May. If the 2-month period from 16th March to 15th May was

taken as a comparison instead, the mean daily deaths rose to 0.97, a difference of 0.71 and an increase of 282%.

The daily Trust total caseload for service users with learning disabilities is displayed in Figure 2, and daily accepted and discharged trust referral numbers are displayed in Figure 3. The mean number of accepted referrals decreased by 32%, and the number of discharges showed a relatively small reduction by 6%. The mean overall daily Trust caseload was reduced by 6%.

Data on inpatient care are displayed in Figures 4-5, showing a fall in daily inpatient numbers (by 22% overall and by 17% for those under the Mental Health Act), reflecting a high level of discharges in late March and early April (Figure 4).

AMHS daily contacts are displayed in Figure 6 and daily caseloads are displayed in Figure 7. Mean total daily contacts showed a relatively small increase (6%) overall after 15th March. Face-to-face contacts were reduced by 56%, and virtual contacts were increased by 199%. However, mean daily caseloads were reduced only marginally by 5%.

CAMHS daily contacts are displayed in Figure 8 and daily caseloads are displayed in Figure 9. Mean total daily contacts were reduced by 7%, with an 87% reduction in face-to-face contacts, and a 174% increase in virtual contacts. Mean daily caseloads were reduced by 6%.

EIP daily contacts are displayed in Figure 10 and daily caseloads are displayed in Figure 11. Mean total daily contacts showed an increase of 17%: a 69% reduction in face-to-face contacts accompanied by a 221% increase in virtual contacts. Mean daily caseloads remained relatively unchanged with a 1% increase.

HTT daily contacts are displayed in Figure 12 and daily caseloads are displayed in Figure 13. Mean total daily contacts were reduced by 14% overall after 15th March, made up of an 32% reduction in face-to-face contacts and a 63% reduction in virtual contacts. Mean daily caseloads were reduced by 21%.

Liaison A&E daily contacts are displayed in Figure 14 and daily caseloads are displayed in Figure 15. Mean total daily contacts were reduced by 9%: a 13% reduction in face-to-face contacts and a 42% increase in virtual contacts. Mean daily caseloads were reduced by 15%.

MHOA daily contacts are displayed in Figure 16 and daily caseloads are displayed in Figure 17. Mean total daily contacts were reduced by 32%: a 47% reduction in face-to-face contacts and a 4% increase in virtual contacts. Mean daily caseloads reduced by 18%.

Discussion

Comparing periods before and after the 16th of March 2020 in terms of the overall Trust activity for individuals with learning disabilities, total caseload numbers remained relatively unchanged (a 6% decrease), although inpatient numbers were reduced more substantially (by 22%) because of discharges made in the early period of lockdown. Caseloads were reduced in all specific services, but most substantially in HTT (21%), MHOA (18%) and Liaison/A&E (15%), and were least changed in EIP (1%), AMHS (5%) and CAMHS (6%).

All specific services also recorded reductions in face-to-face and increases in virtual contacts. Total contact numbers declined most in MHOA (by 32%), followed by HTT (14%), Liaison/A&E (9%) and CAMHS (7%), and were increased in AMHS (by 6%) and EIP (17%). However, it should be borne in mind that contact numbers were relatively low in some services (MHOA in particular).

Mean daily deaths increased by 103% for the period after 16th March compared to the daily mean for 2020 up to this date; however, the period from 16th March to 31st July included both the peak wave of increased mortality and a period with relatively few deaths. As described, the increase rose to 282% if the mid-March to mid-May period was considered specifically.

Considering limitations, it is important to bear in mind that the data are derived from a single site. Because complete data are being provided for that site with no hypothetical source population intended, calculation of confidence intervals was not felt to be appropriate for the

descriptive data provided in this report; applicability to other mental healthcare providers cannot therefore be inferred and would need specific investigation. Profiles of services used by individuals with learning disabilities and catchment morbidity are also likely to vary. It is also likely that we did not capture all of the services individuals with learning disabilities are currently accessing for mental healthcare, as well as undiagnosed individuals. Classification of service types is inevitably approximate and likely to vary between mental health service providers. Finally, no attempt was made to adjust for temporal changes (e.g. seasonal effects) that might be observed in previous years' data.

Funding

The research leading to these results has received support from a grant from King's Together. EN and EM are supported by the ESRC-funded DETERMIND project. RS and MB are part-funded by the National Institute for Health Research (NIHR) Biomedical Research Centre at the South London and Maudsley NHS Foundation Trust and King's College London; RS is additionally part-funded by: i) a Medical Research Council (MRC) Mental Health Data Pathfinder Award to King's College London; ii) an NIHR Senior Investigator Award; iii) the National Institute for Health Research (NIHR) Applied Research Collaboration South London (NIHR ARC South London) at King's College Hospital NHS Foundation Trust. The views expressed are those of the authors and not necessarily those of the NIHR or the Department of Health and Social Care.

References

- (1) Holmes EA, O'Connor RC, Perry VH, Tracey I, Wessely S, Arseneault L, et al. Multidisciplinary research priorities for the COVID-19 pandemic: a call for action for mental health science. *Lancet Psychiatry* 2020;Apr 15:[https://doi.org/10.1016/S2215-0366\(20\)30168-1](https://doi.org/10.1016/S2215-0366(20)30168-1)
- (2) Stewart R, Martin E, Broadbent M. Mental health service activity during COVID-19 lockdown: South London and Maudsley data on working age community and home treatment team services and mortality from February to mid-May 2020. *medRxiv* 2020;doi: 10.1101/2020.06.13.20130419.

(3) Stewart R, Soremekun M, Perera G, Broadbent M, Callard F, Denis M, et al. The South London and Maudsley NHS Foundation Trust Biomedical Research Centre (SLAM BRC) Case Register: development and descriptive data. *BMC Psychiatry* 2009;9:51.

(4) Perera G, Broadbent M, Callard F, Chang C-K, Downs J, Dutta R, et al. Cohort profile of the South London and Maudsley NHS Foundation Trust Biomedical Research Centre (SLaM BRC) Case Register: current status and recent enhancement of an Electronic Mental Health Record derived data resource. *BMJ Open* 2016;6:e008721.

(5) Fernandes AC, Cloete D, Broadbent MTM, Hayes RD, Chang C-K, Roberts A, et al. Development and evaluation of a de-identification procedure for a case register sourced from mental health electronic records. *BMC Med Inform Decis Mak* 2013 Jan 1;13:71.

Table 1. Levels and changes in daily service caseloads and contacts in patients with learning disabilities from 1st January to 31st July 2020

Service Metric	Mean (SD) daily level before 16 th March	Mean (SD) daily level from 16 th March	Difference	Percentage Change
Deaths	0.25 (0.49)	0.51 (0.84)	0.26	+103.1%
Total Trust Caseload	8145.9 (52.3)	7623.7 (187.1)	-522.1	-6.4%
Accepted trust referrals	10.2 (6.5)	6.93 (4.5)	-3.2	-31.9%
Discharged from Trust Services	12.3 (8.3)	11.5 (8.4)	-0.8	-6.4%
Inpatient admissions	1.7 (1.4)	1.3 (1.1)	-0.4	-21.9%
Discharges from inpatient care	1.9 (1.8)	1.6 (1.8)	-0.3	-14.1%
Inpatient numbers	204.3 (5.2)	158.5 (8.3)	-45.7	-22.4%
Inpatient numbers under MHA	157.5 (4.4)	130.2 (7.4)	-27.3	-17.3%
AMHS total contacts	62.4 (41.2)	66.4 (43.2)	4.0	+6.4%
AMHS face-to-face contacts	47.1 (32.0)	20.7 (14.4)	-26.4	-56.2%
AMHS virtual contacts	15.3 (10.3)	45.7 (30.3)	30.4	+198.7%
AMHS caseload	1011.1 (5.2)	965.4 (18.7)	-45.7	-4.5%
CAMHS total contacts	70.0 (46.9)	65.0 (39.6)	-5.0	-7.2%
CAMHS face-to-face contacts	48.7 (34.0)	6.5 (4.4)	-42.2	-86.7%
CAMHS virtual contacts	21.4 (14.6)	58.6 (36.9)	37.2	+174.2%
CAMHS caseload	2860.9 (26.0)	2677.5 (77.7)	-183.4	-6.4%
EIP total contacts	8.3 (6.2)	9.7 (7.2)	1.4	16.6%
EIP face-to-face contacts	5.9 (4.4)	1.8 (2.0)	-4.0	-69.2%
EIP virtual contacts	2.5 (2.3)	7.9 (5.9)	5.4	+221.1%

EIP caseload	95.9 (1.0)	95.4 (3.0)	-0.5	-0.6%
HTT total contacts	11.1 (3.8)	9.6 (3.7)	-1.6	-14.1%
HTT face-to-face contacts	9.1 (3.3)	6.2 (3.1)	-2.9	-32.0%
HTT virtual contacts	2.1 (1.6)	3.4 (1.8)	1.3	63.4%
HTT caseload	14.6 (3.0)	11.6 (2.6)	-3.0	-20.8%
Liaison/A&E total contacts	10.8 (4.8)	9.8 (5.4)	-1.0	-9.1%
Liaison/A&E face-to-face contacts	10.0 (4.4)	8.7 (4.7)	-1.3	-13.3%
Liaison/A&E virtual contacts	0.8 (1.2)	1.2 (1.5)	0.3	+42.0%
Liaison/A&E caseload	30.2 (3.8)	25.8 (3.8)	-4.4	-14.6%
MHOA total contacts	2.0 (2.0)	1.3 (1.6)	-0.6	-31.7%
MHOA face-to-face contacts	1.4 (1.6)	0.7 (1.0)	-0.6	-46.7%
MHOA virtual contacts	0.6 (0.8)	0.6 (0.9)	0.02	+3.8%
MHOA caseload	28.2 (1.3)	23.2 (1.5)	-5.0	-17.8%

AMHS: Adult Mental Health Service; CAMHS: Child and Adolescent Mental Health Service; EIP: Early Intervention in Psychosis; HTT: Home Treatment Team; A&E accident and emergency; MHOA: Mental Health of Older Adults.

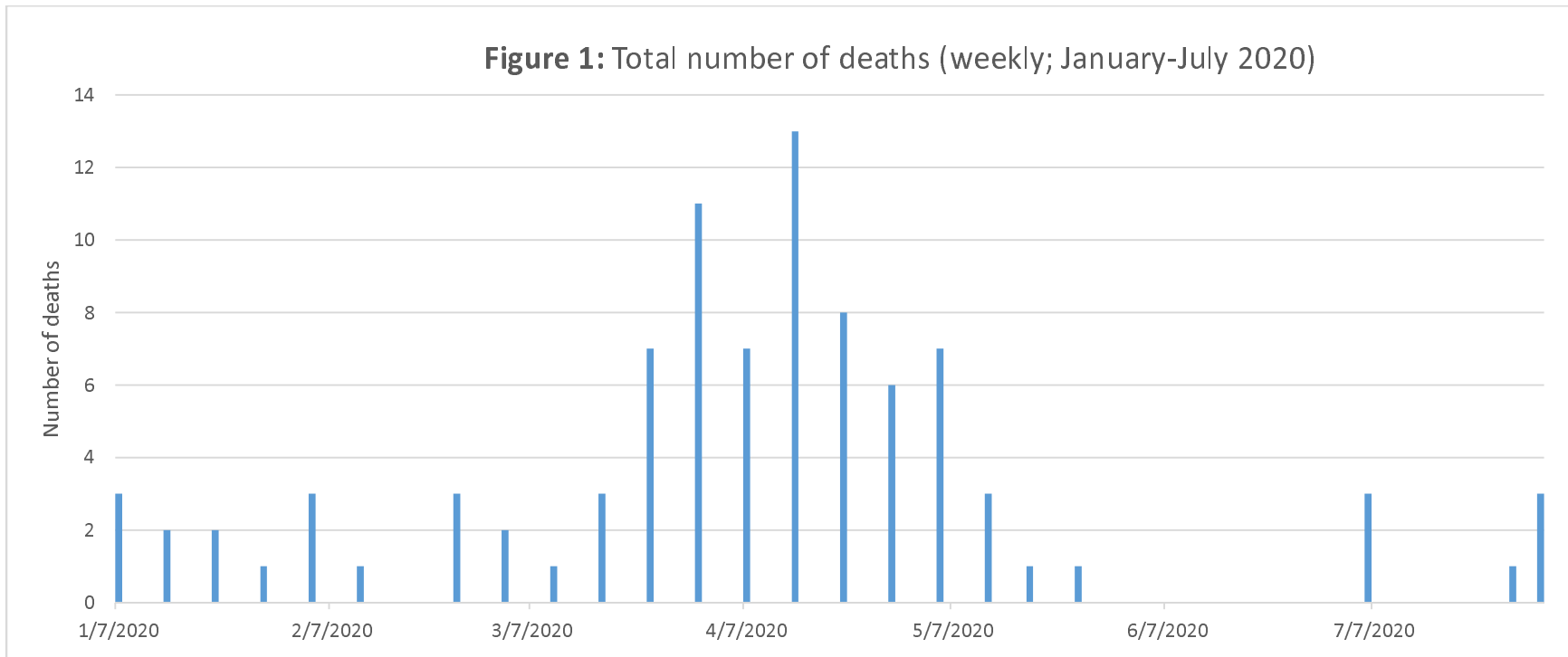


Figure 2: Trust total caseload (daily)

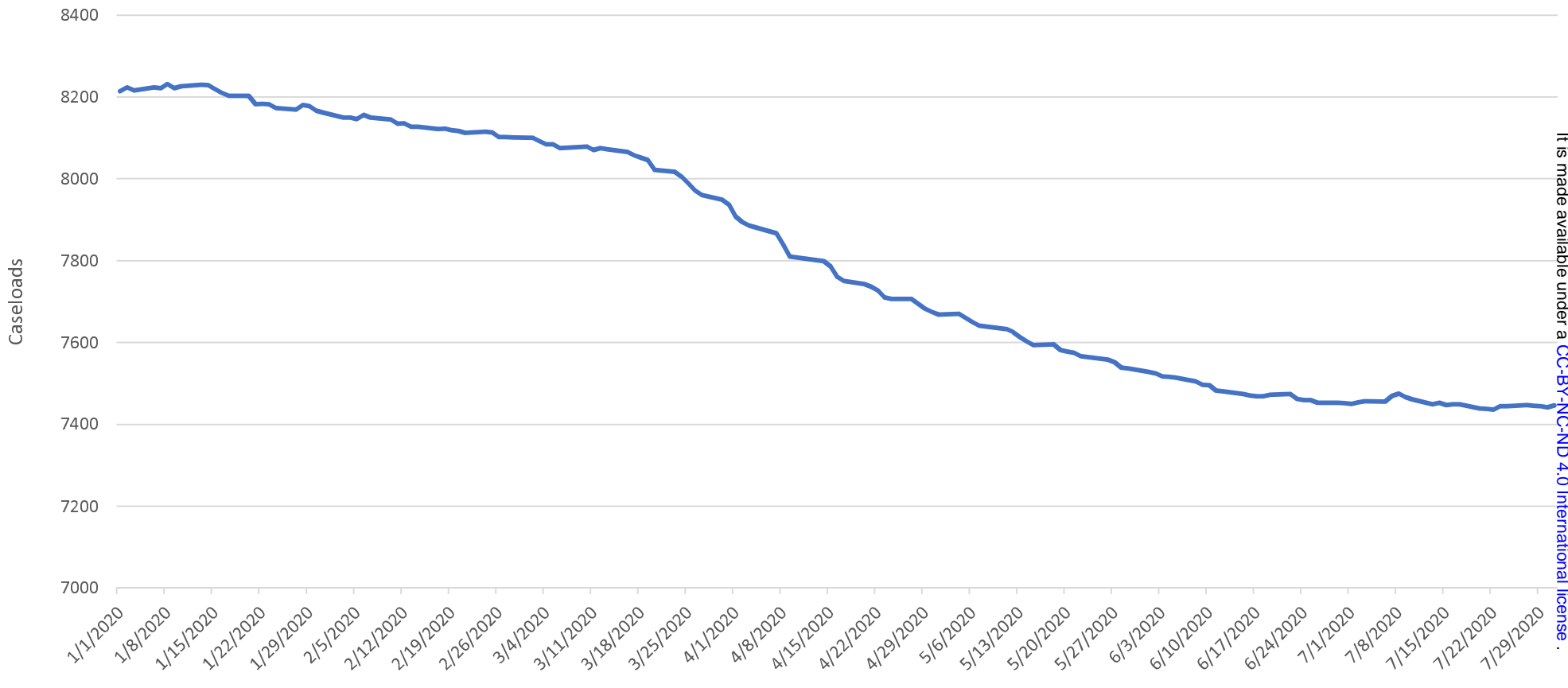


Figure 3: Number of accepted & discharged Trust referrals

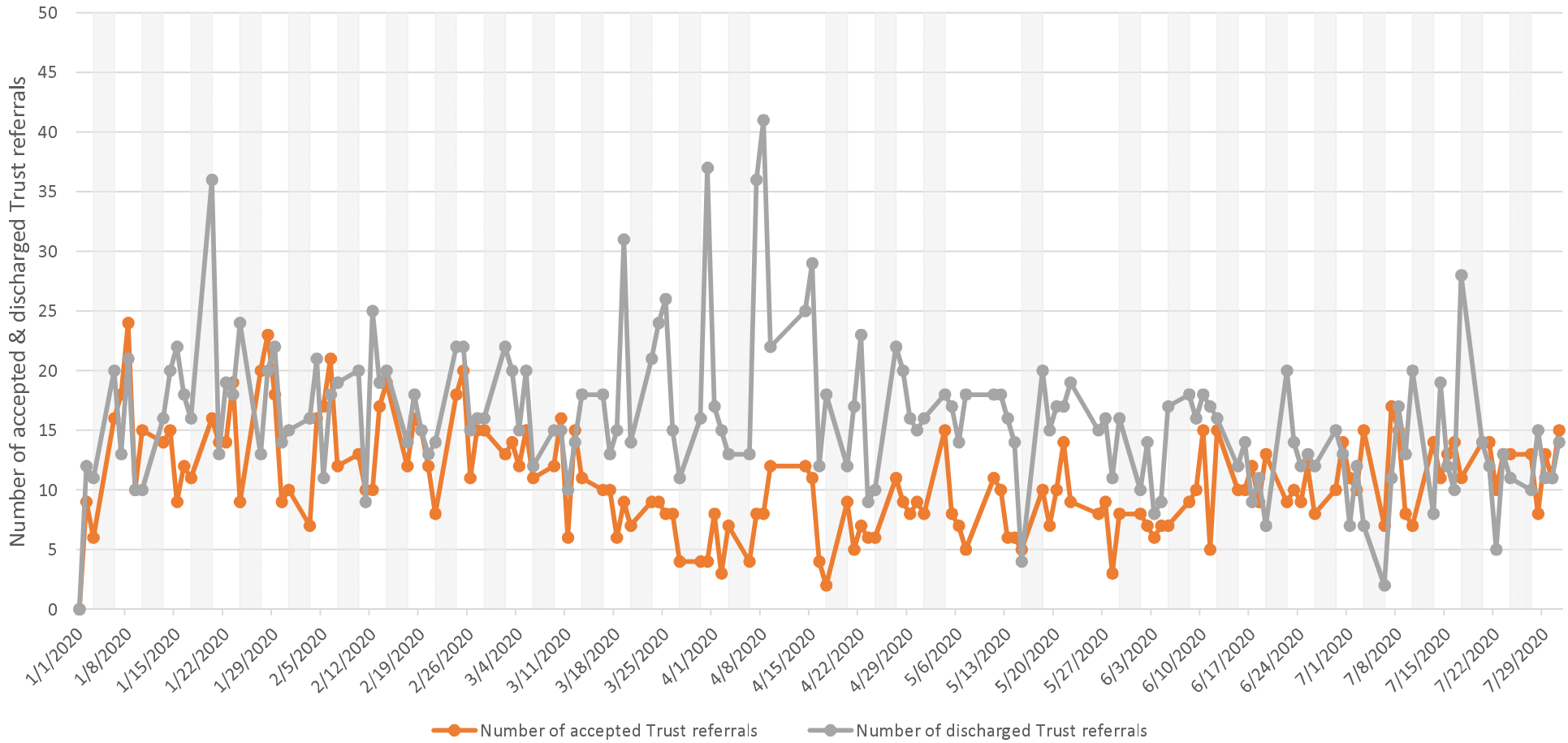
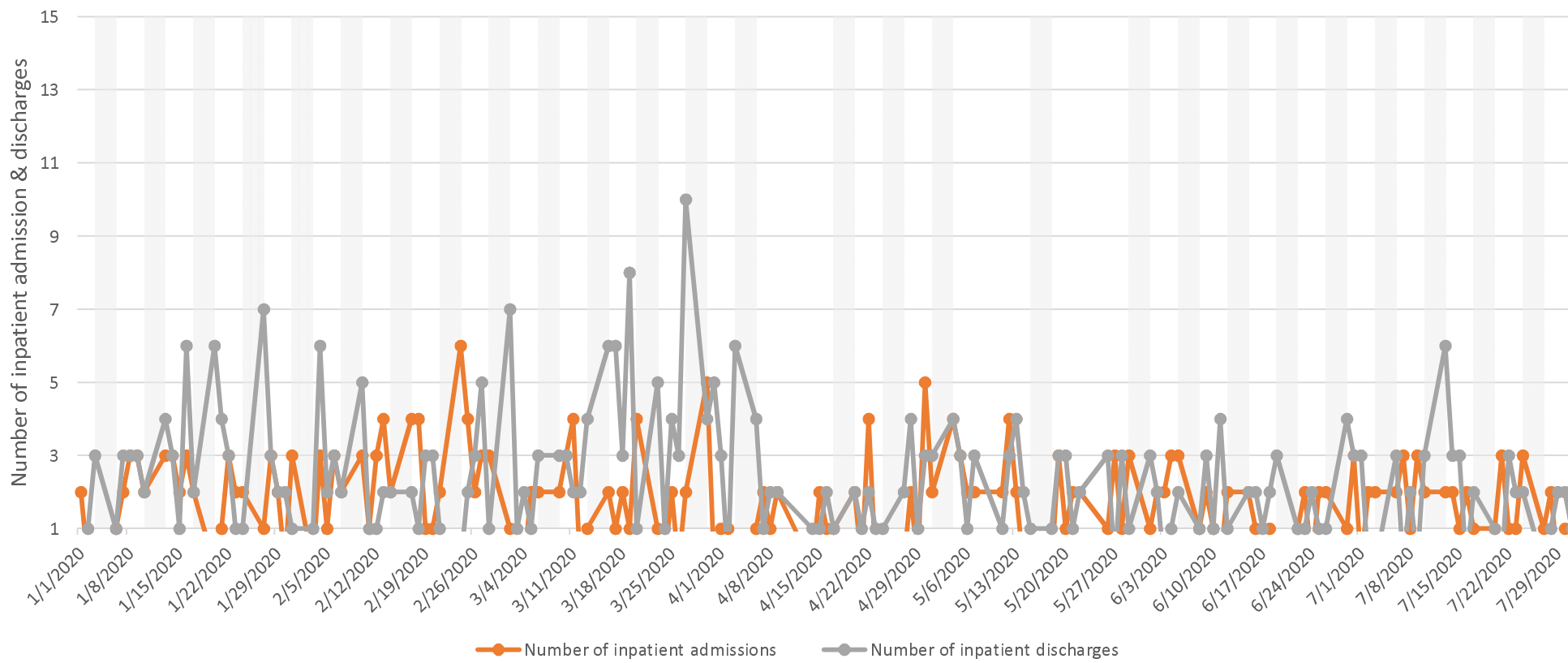


Figure 4: Number of inpatient admissions & discharges



medRxiv preprint doi: <https://doi.org/10.1101/2020.10.11.20210625>; this version posted October 13, 2020. The copyright holder for this preprint (which was not certified by peer review) is the author/funder, who has granted medRxiv a license to display the preprint in perpetuity. It is made available under a [CC-BY-NC-ND 4.0 International license](#).

Figure 5: Number of inpatients / inpatients detained under the Mental Health Act

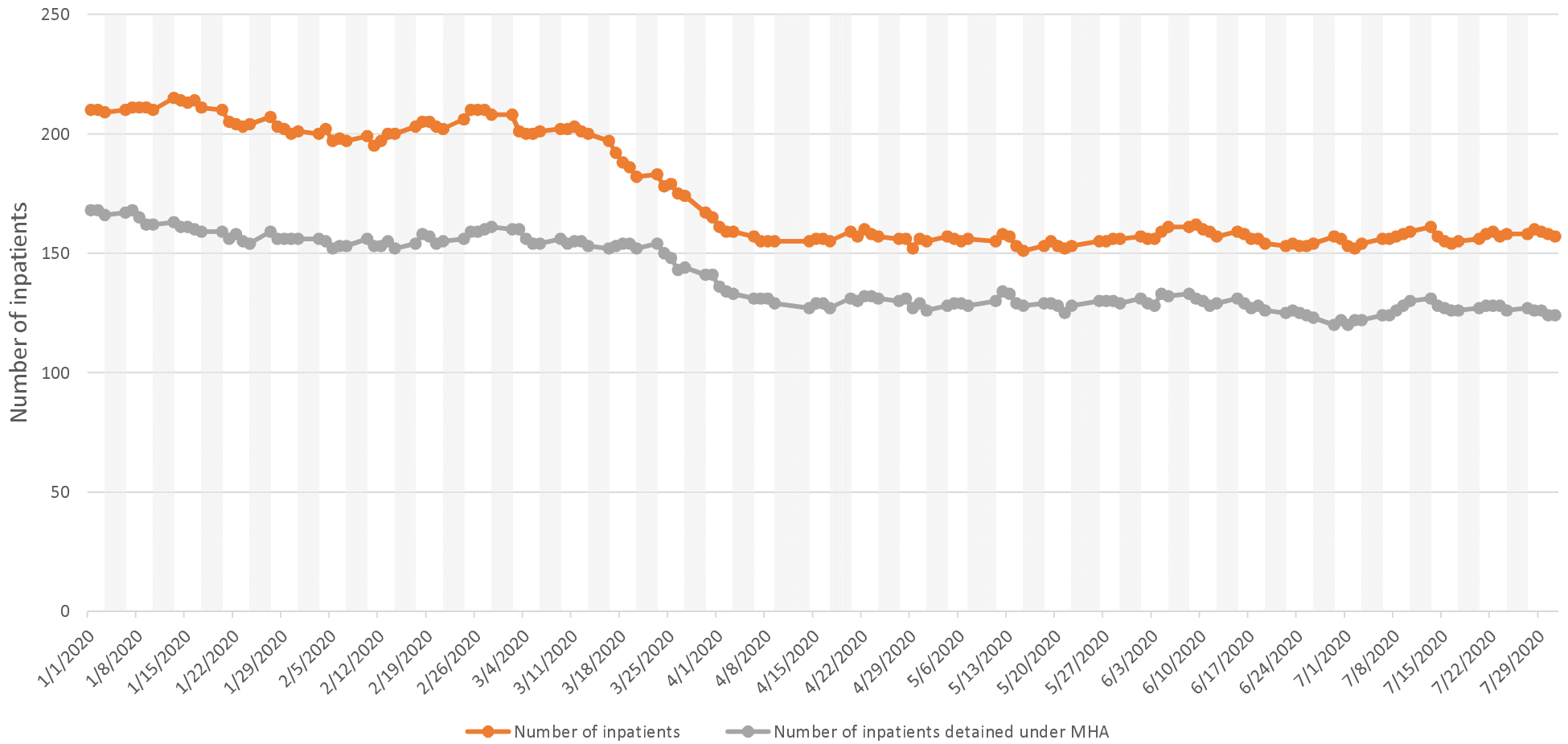
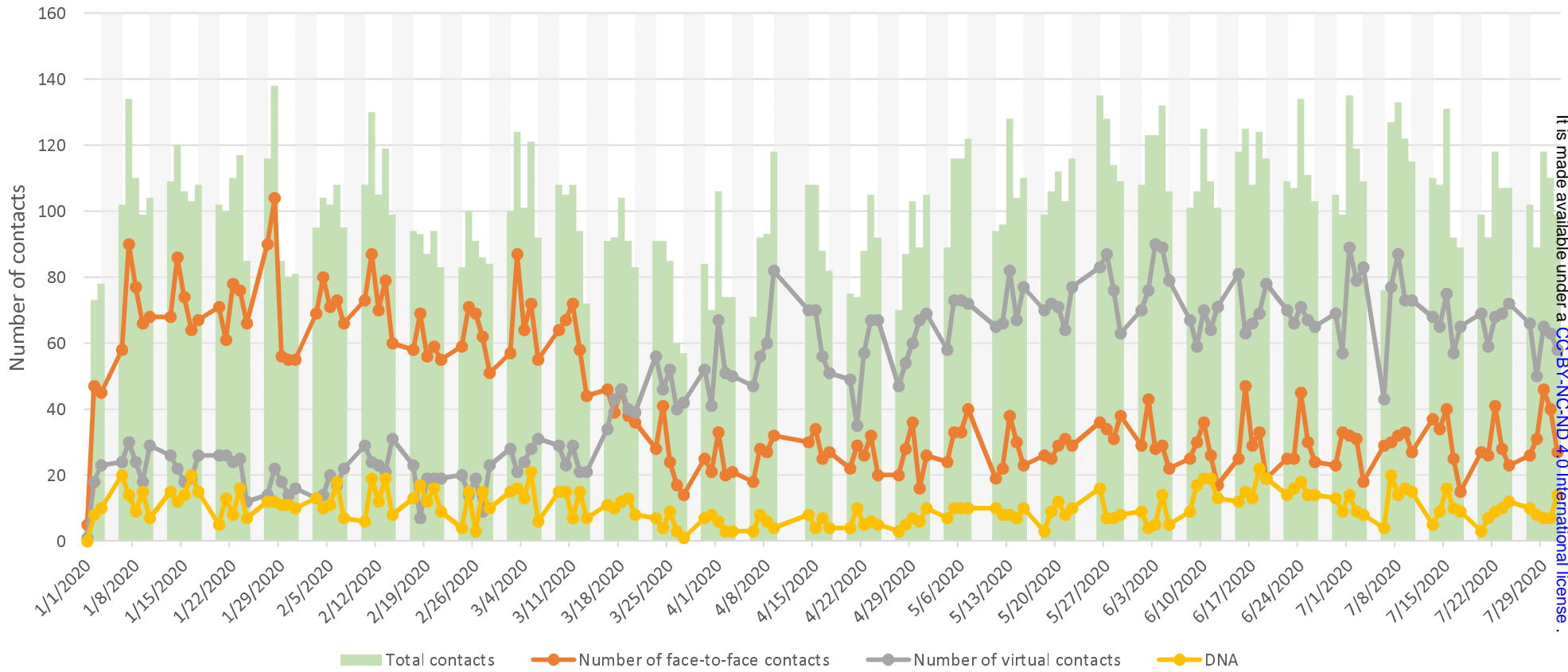
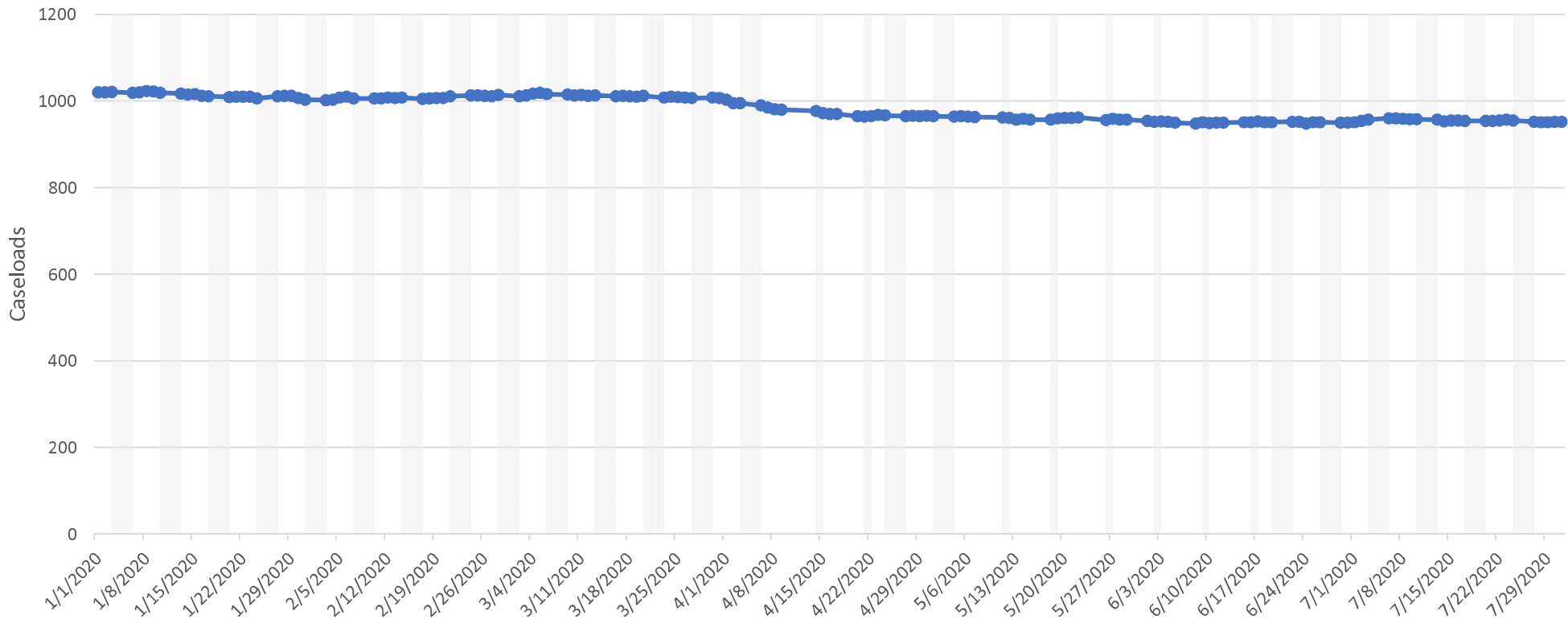


Figure 6: Adult Mental Health: non-specialist working age community services contacts by type (daily; January - July 2020)



medRxiv preprint doi: <https://doi.org/10.1101/2020.10.11.20210625>; this version posted October 13, 2020. The copyright holder for this preprint (which was not certified by peer review) is the author/funder, who has granted medRxiv a license to display the preprint in perpetuity. It is made available under a [CC-BY-NC-ND 4.0 International license](https://creativecommons.org/licenses/by-nc-nd/4.0/).

Figure 7: Adult Mental Health: non-specialist working age community services caseloads (daily; January - July 2020)



medRxiv preprint doi: <https://doi.org/10.1101/2020.10.11.20210625>; this version posted October 13, 2020. The copyright holder for this preprint (which was not certified by peer review) is the author/funder, who has granted medRxiv a license to display the preprint in perpetuity. It is made available under a [CC-BY-NC-ND 4.0 International license](#).

Figure 8: Child and Adolescent Mental Health Services contacts by type (daily; January - July 2020)

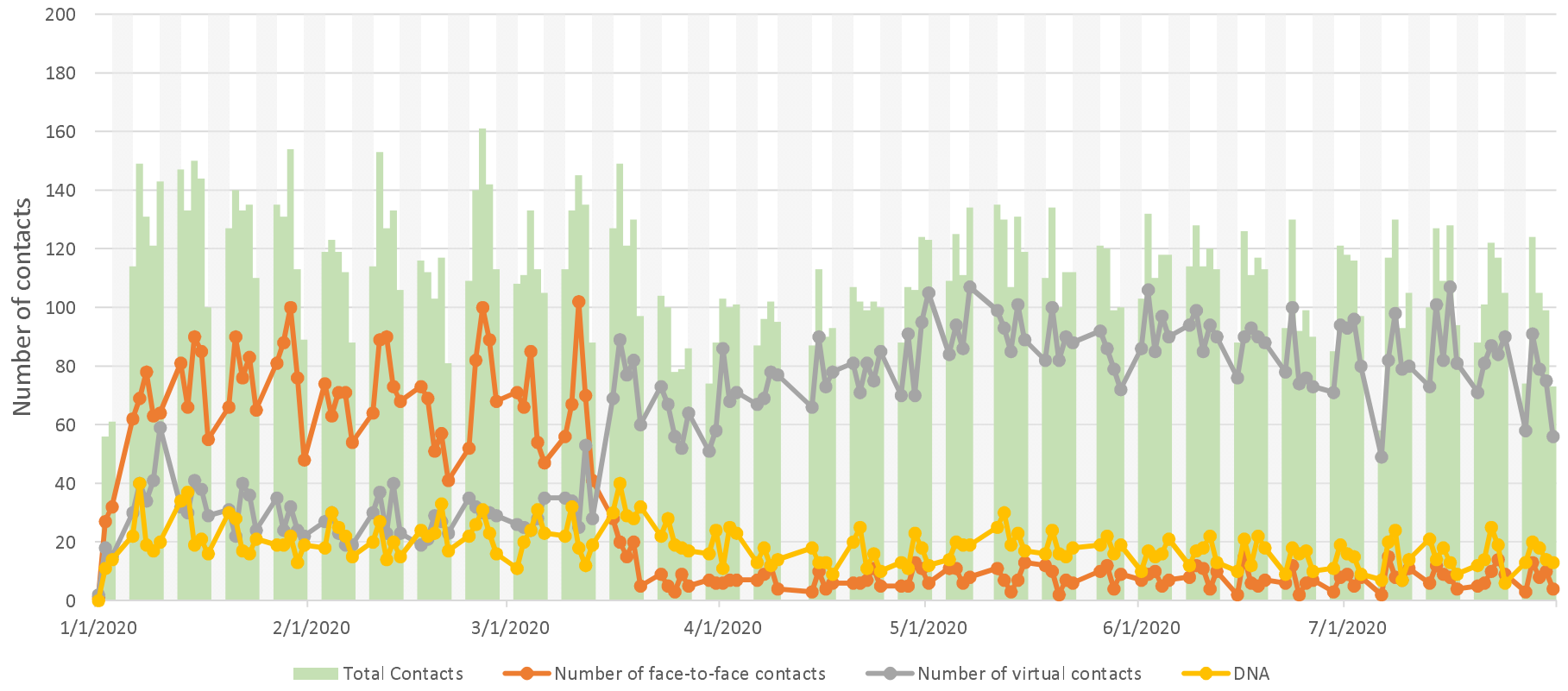
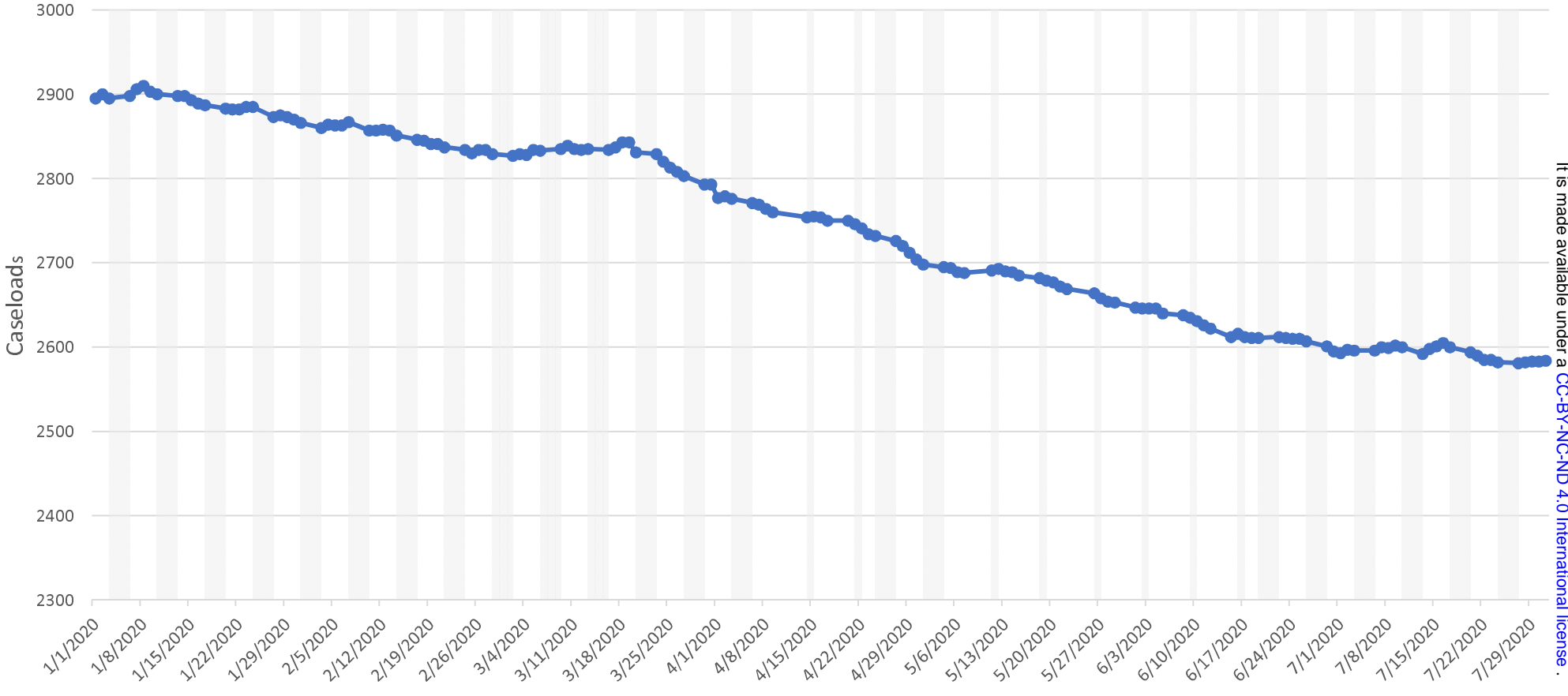


Figure 9: Child and Adolescent Mental Health Services caseloads (daily; January - July 2020)



medRxiv preprint doi: <https://doi.org/10.1101/2020.10.11.20210625>; this version posted October 13, 2020. The copyright holder for this preprint (which was not certified by peer review) is the author/funder, who has granted medRxiv a license to display the preprint in perpetuity. It is made available under a [CC-BY-NC-ND 4.0 International license](#).

Figure 10: Early intervention psychosis services contacts per type (daily; January -July 2020)

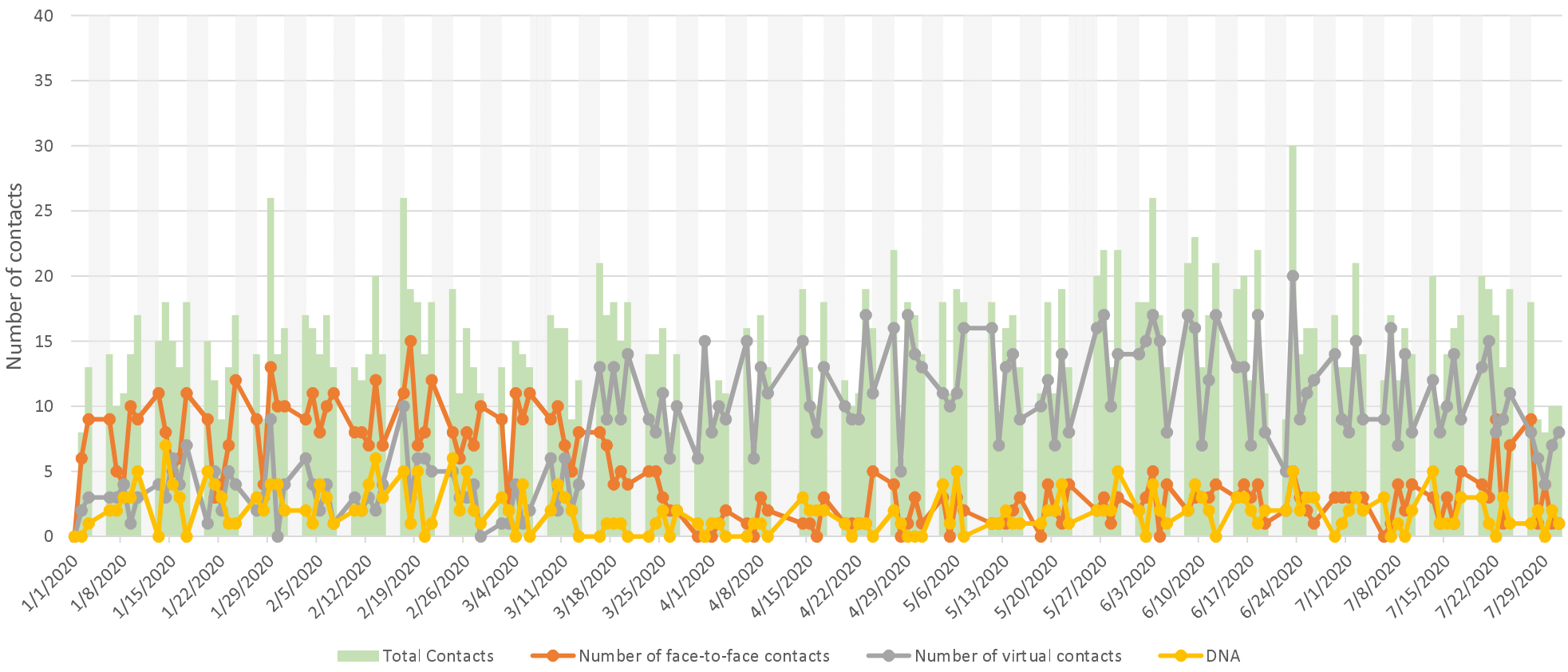


Figure 11: Early intervention psychosis services caseloads (daily; January -July 2020)

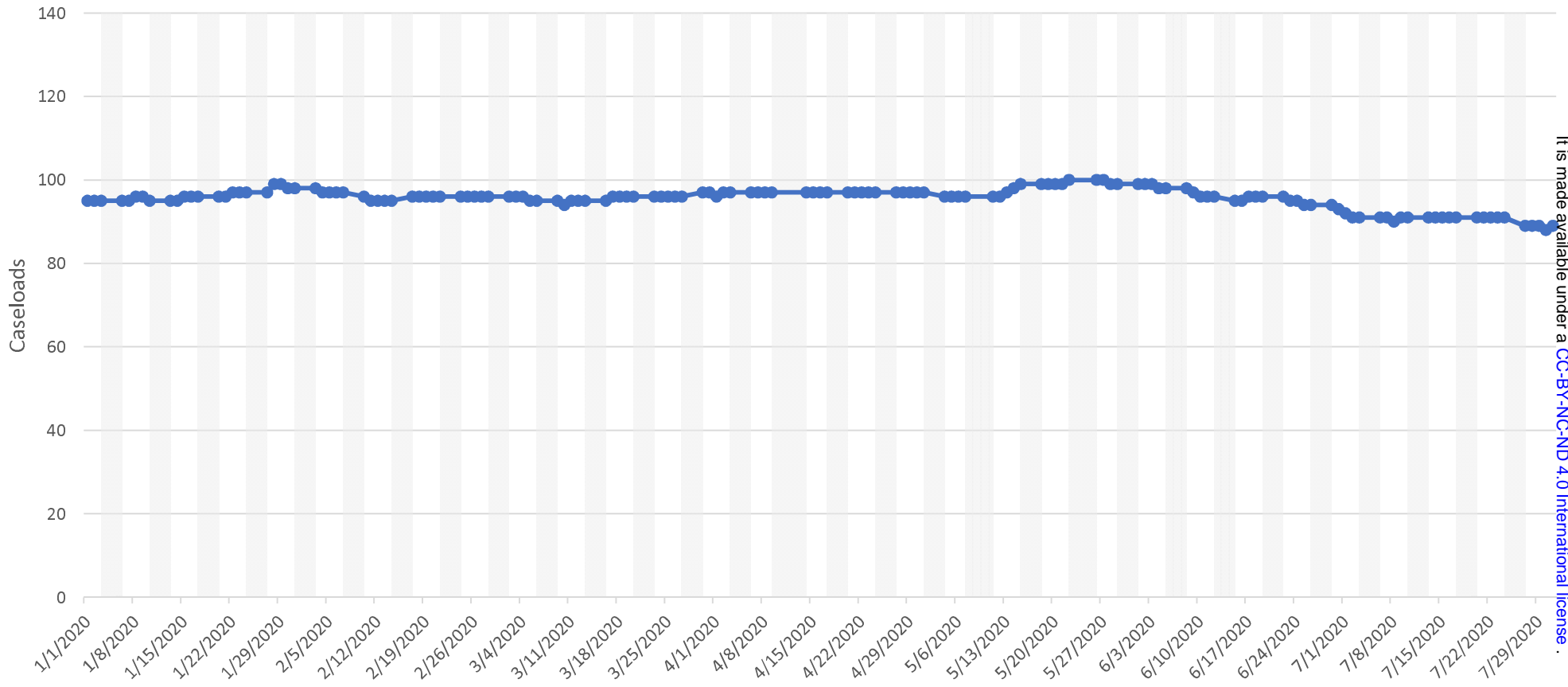


Figure 12: Home treatment / crisis services by type (daily; January - July 2020)

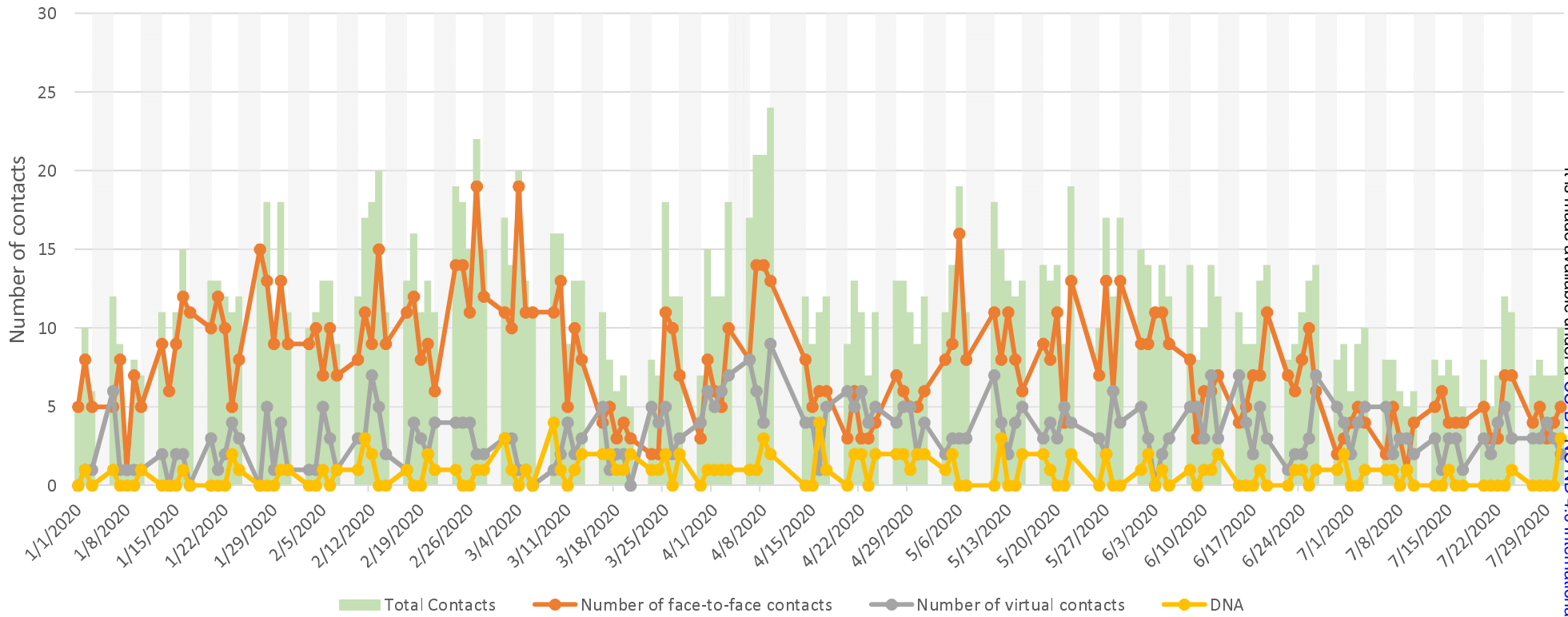


Figure 13: Home treatment / crisis services caseloads (daily; January-July 2020)

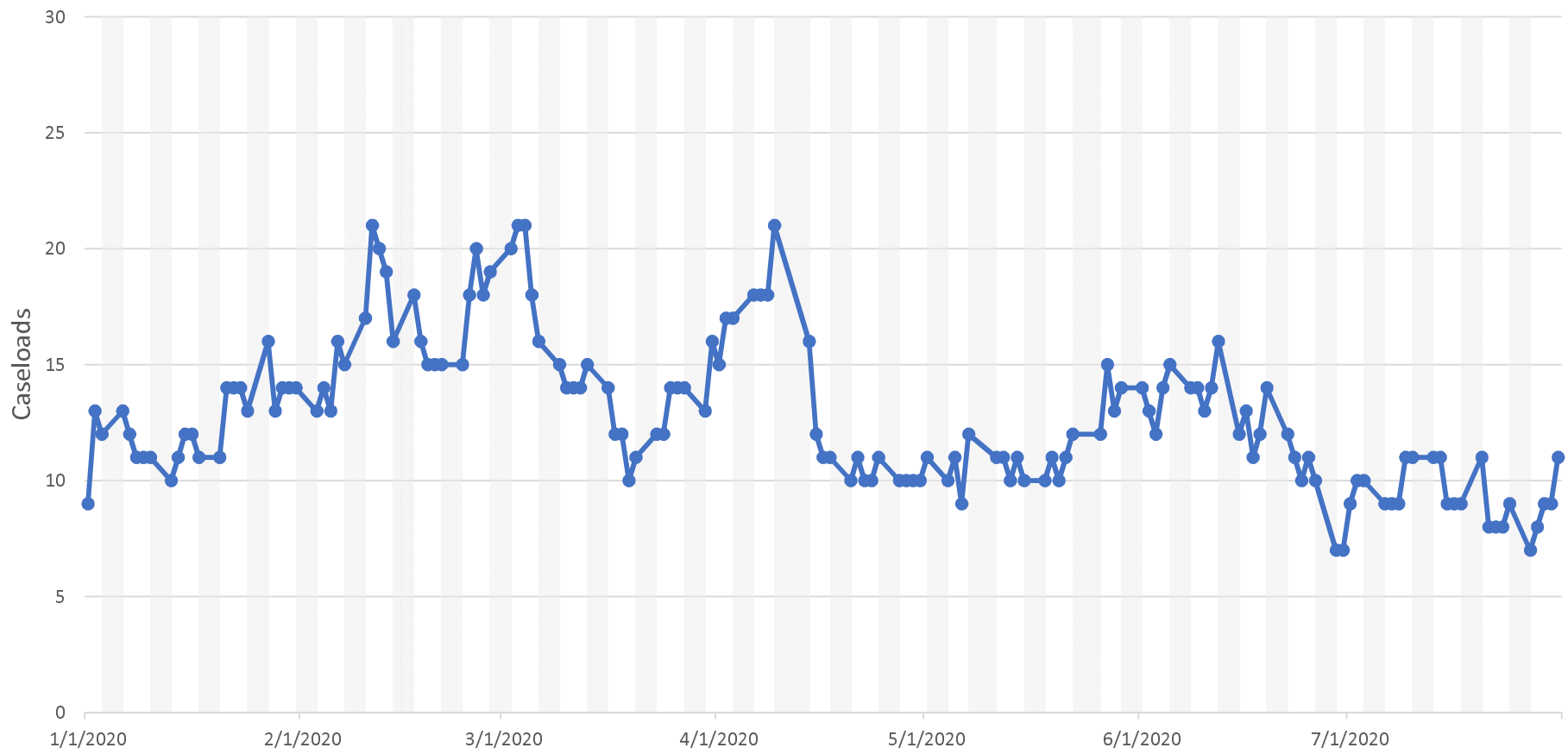
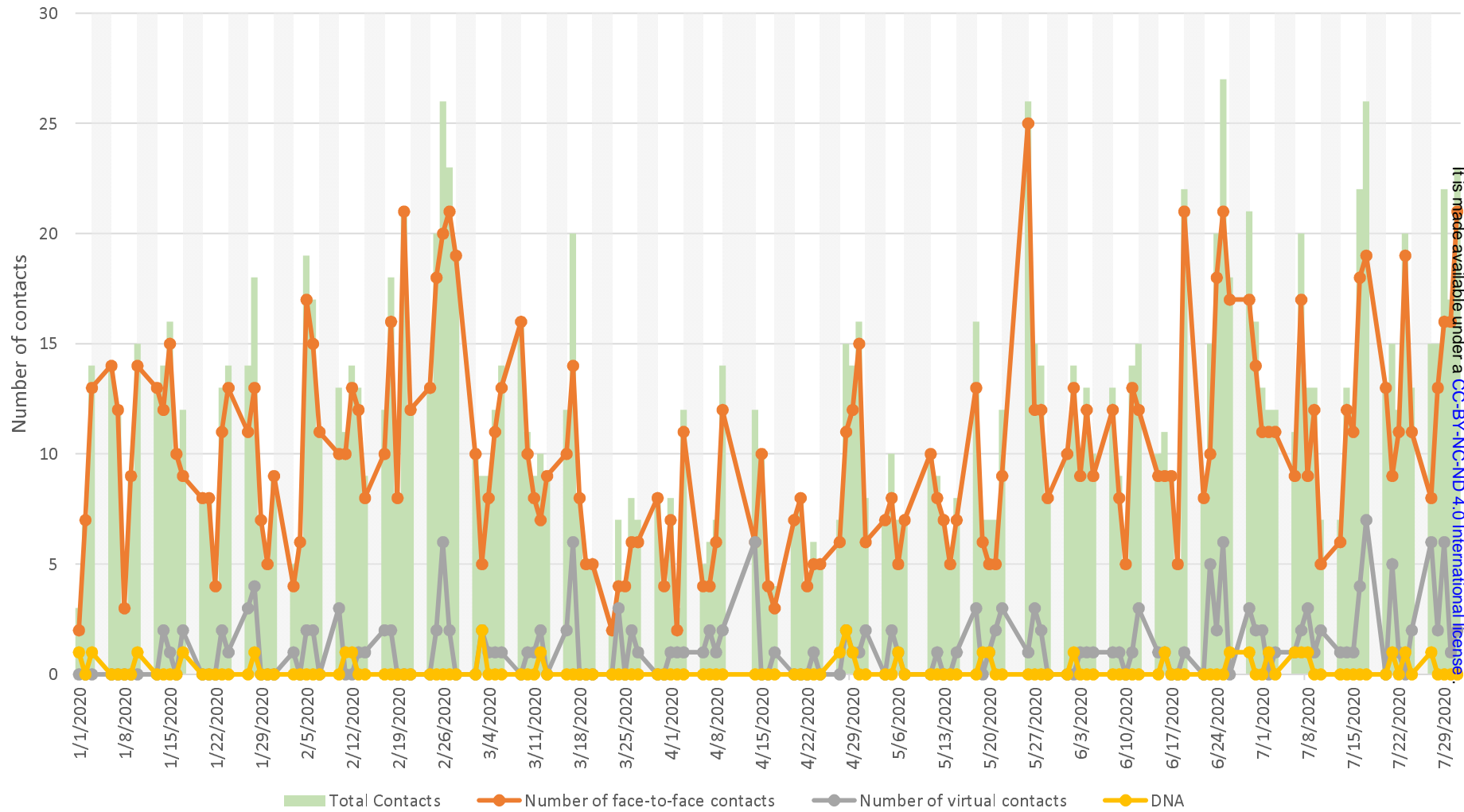


Figure 14: Liason / A&E services contacts by type (daily; January - July 2020)



medRxiv preprint doi: <https://doi.org/10.1101/2020.10.11.20210625>; this version posted October 13, 2020. The copyright holder for this preprint (which was not certified by peer review) is the author/funder, who has granted medRxiv a license to display the preprint in perpetuity. It is made available under a CC-BY-NC-ND 4.0 International license.

Figure 15: Liaison / A&E services caseloads (daily; January - July 2020)

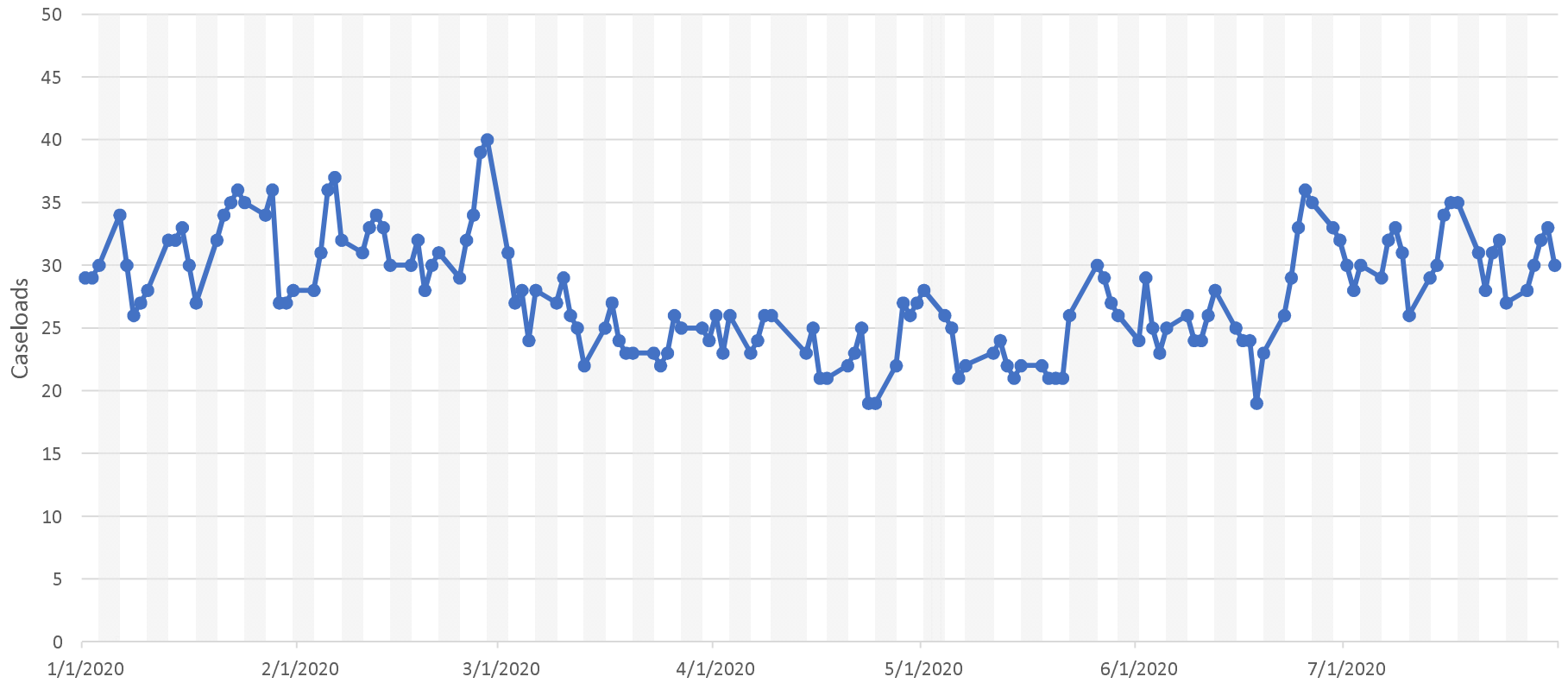


Figure 16: Older adult services contacts by type (daily; January - July 2020)

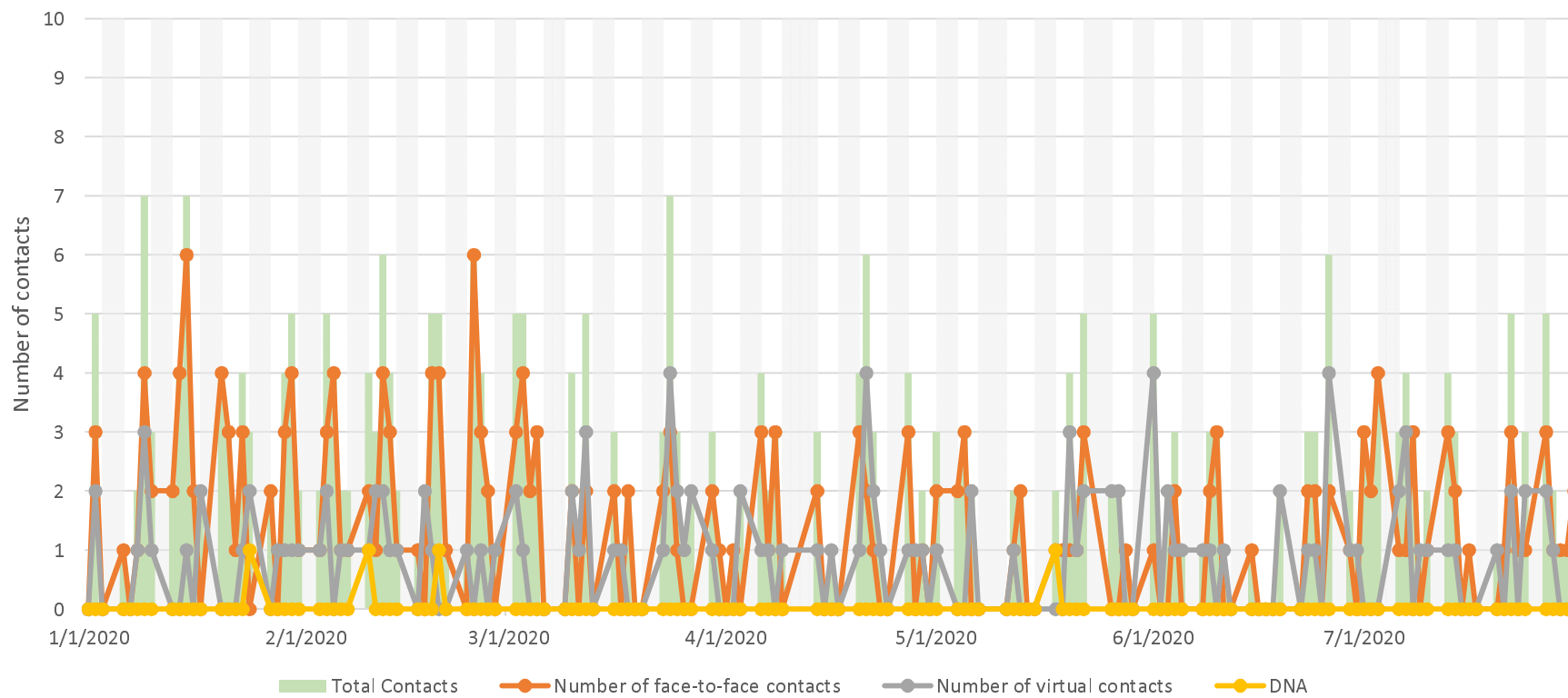


Figure 17: Older adults services caseloads (daily; January - July 2020)

