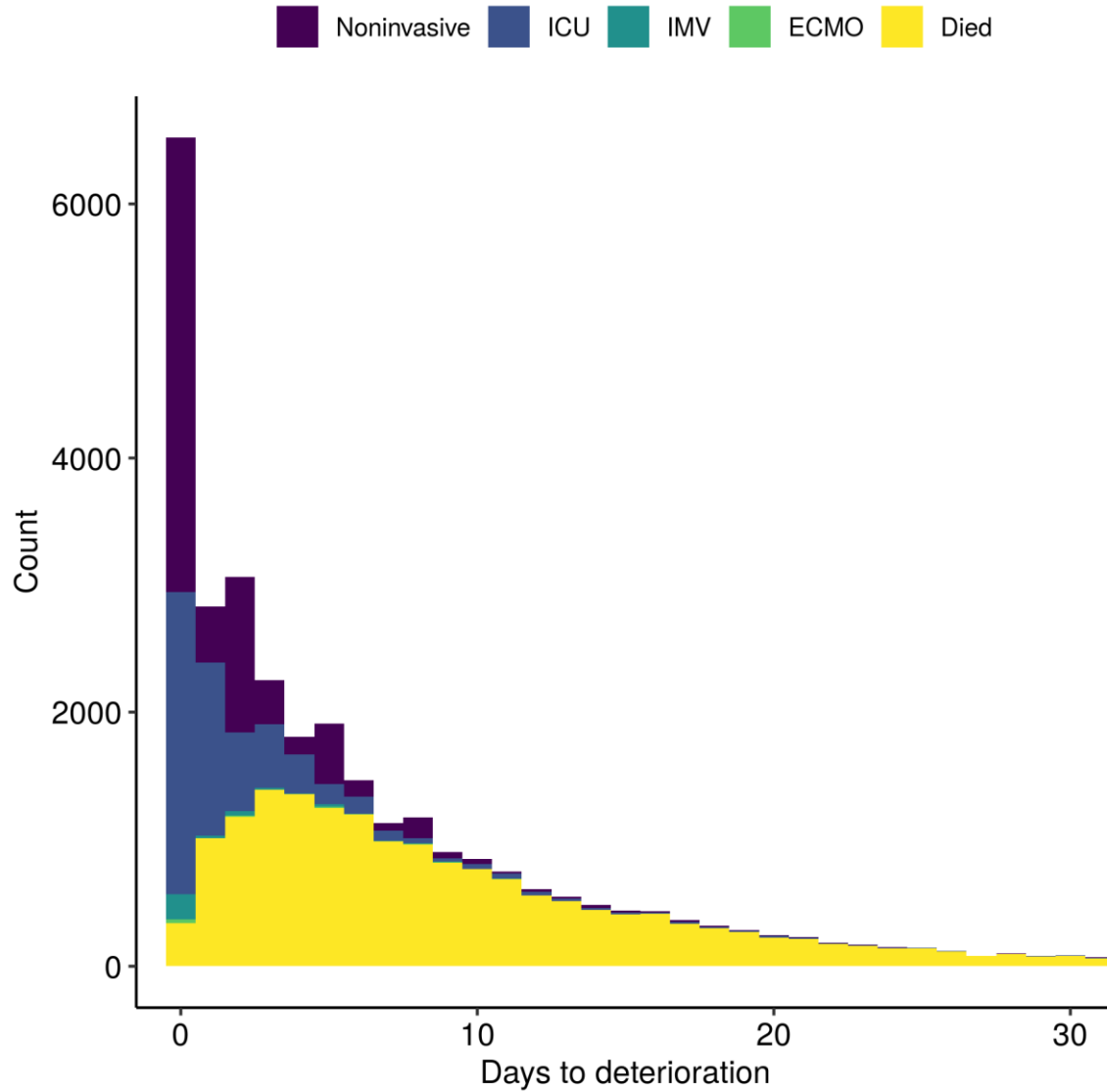


Development and validation of the 4C Deterioration model for adults hospitalised with COVID-19.

Supplementary Material

Supplementary Figure 1: Days to deterioration following admission, stratified by first chronological type of deterioration.

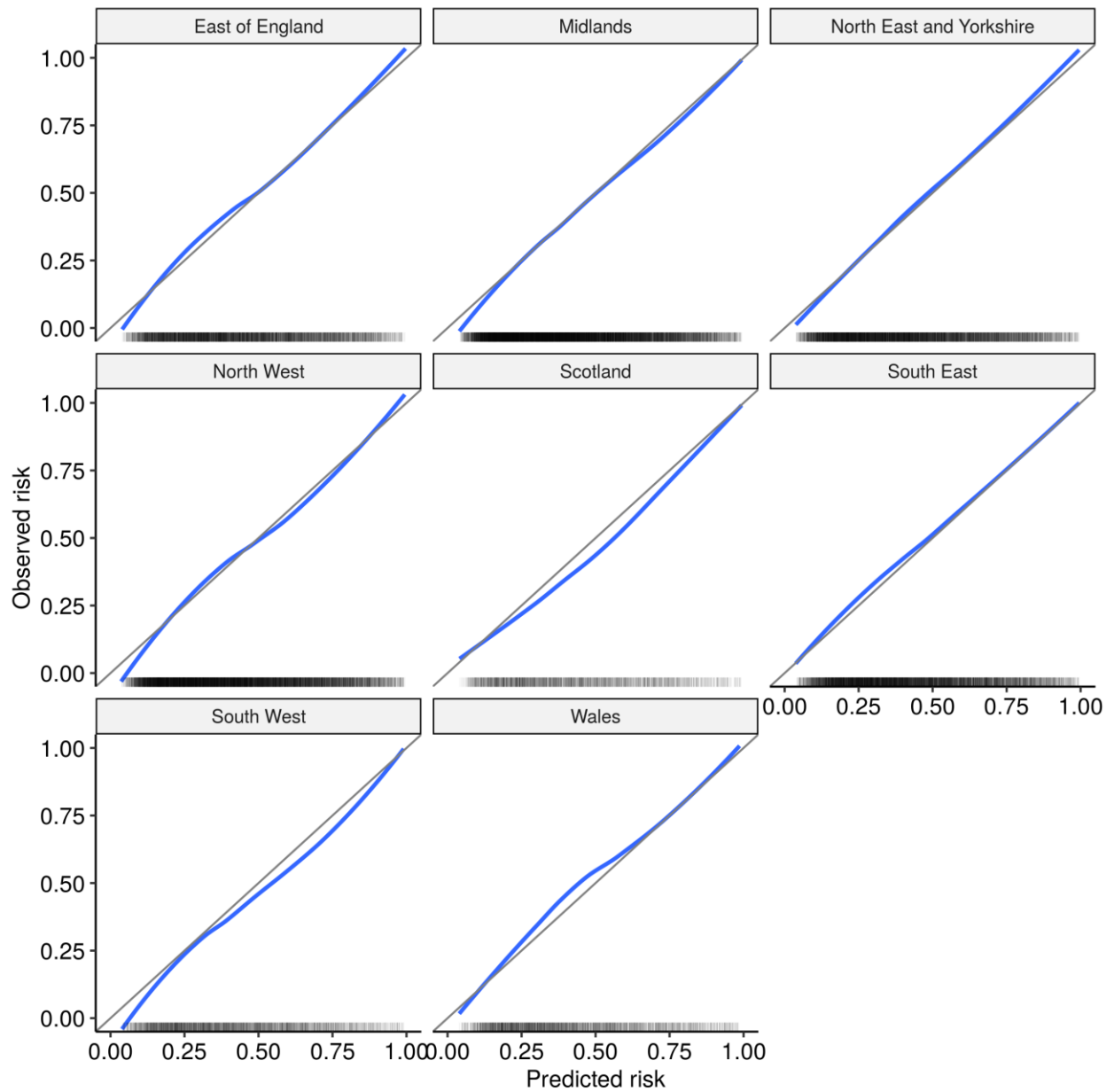
Outcome events are shown as stacked histogram. Total sample size = 75,016 participants with 30,939 deterioration events with known time point shown in plot. Median days to deterioration was 4 (interquartile range 1-9).



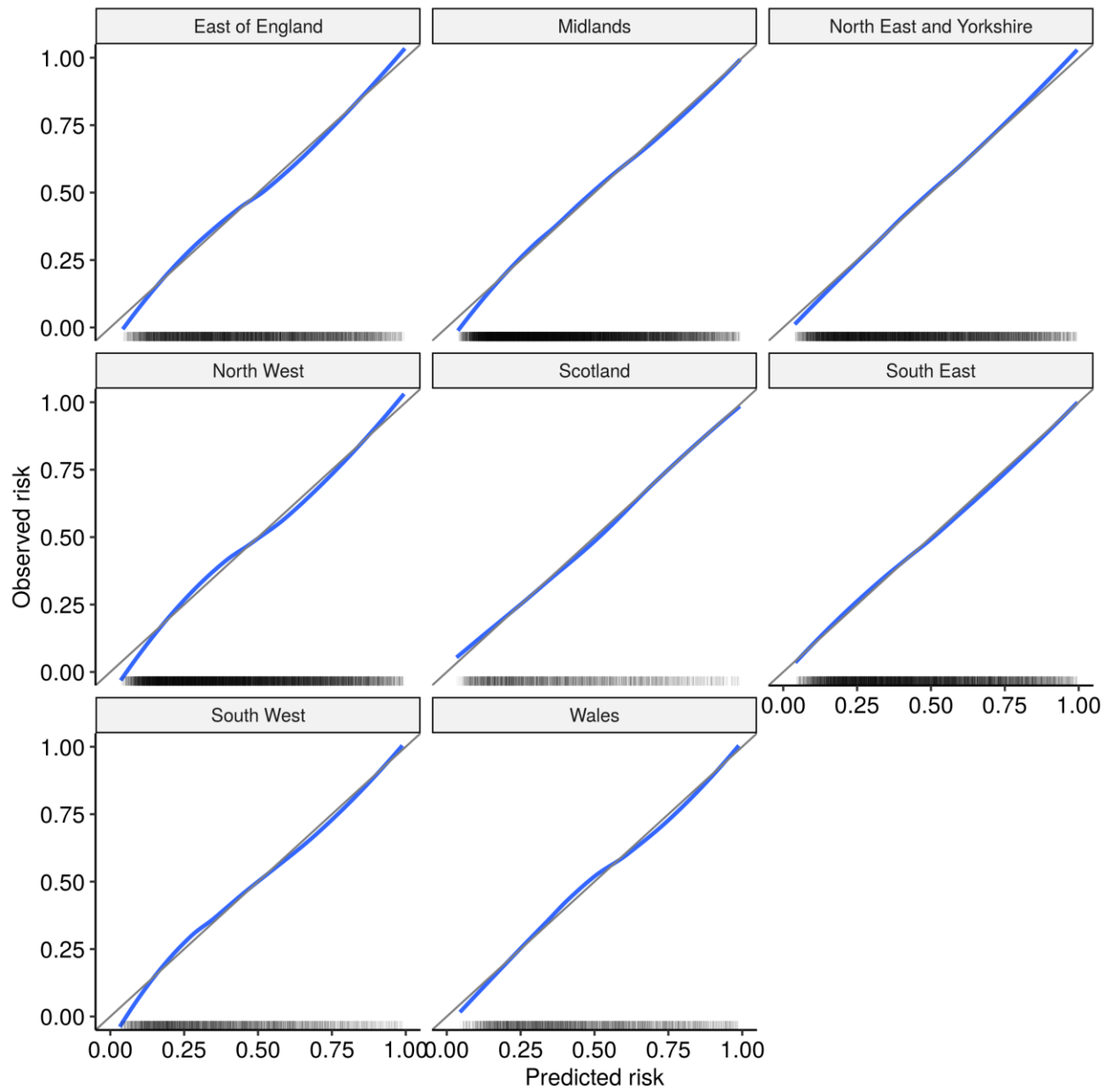
Supplementary Figure 3: Pooled calibration across multiple imputed datasets during IECV (a) before and (b) after recalibration to local regions.

Calibration is shown using a loess-smoother across multiply imputed datasets. Rug plots indicate the distributions of predicted risk. Total sample size = 66,764 participants.

(a)

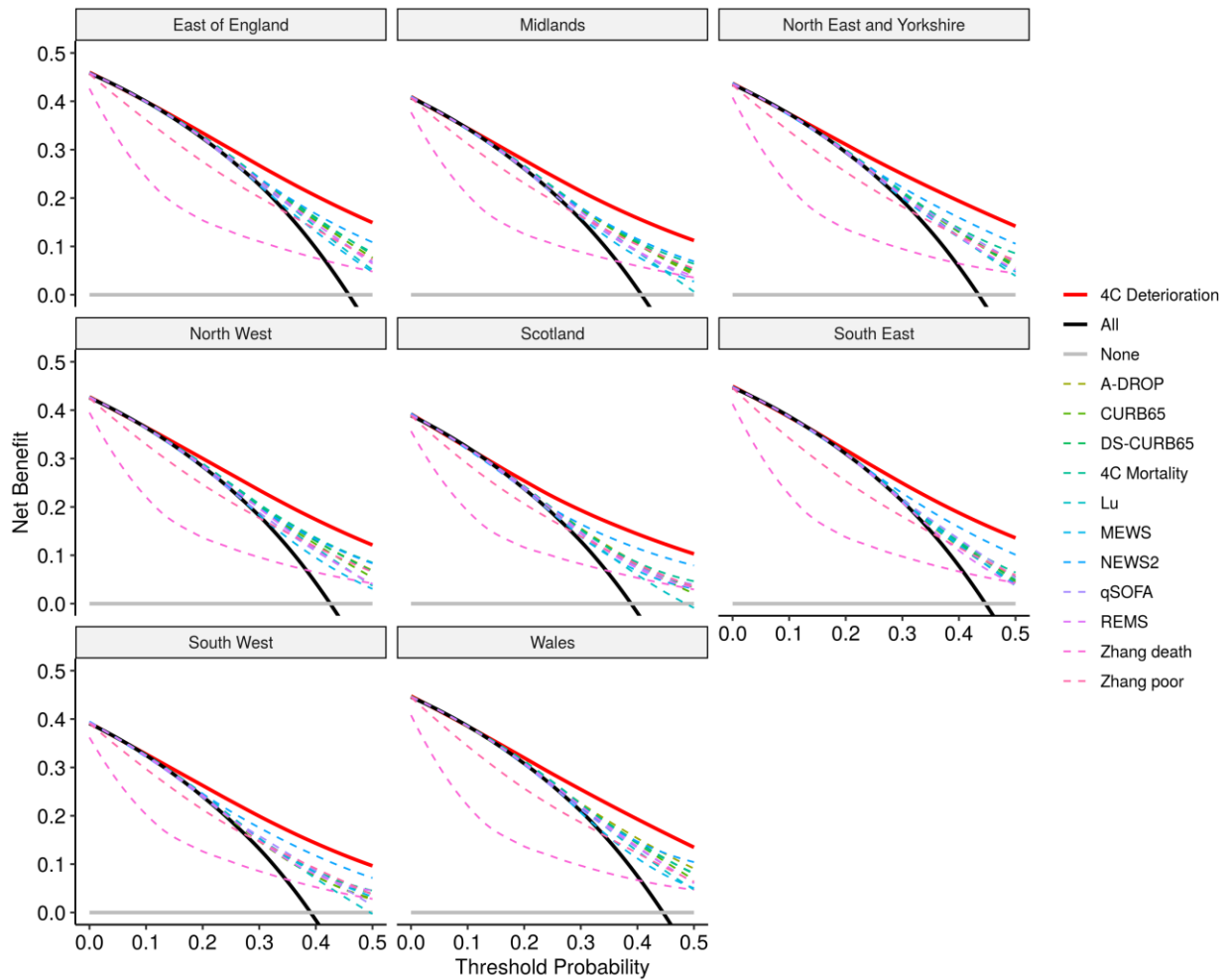


(b)



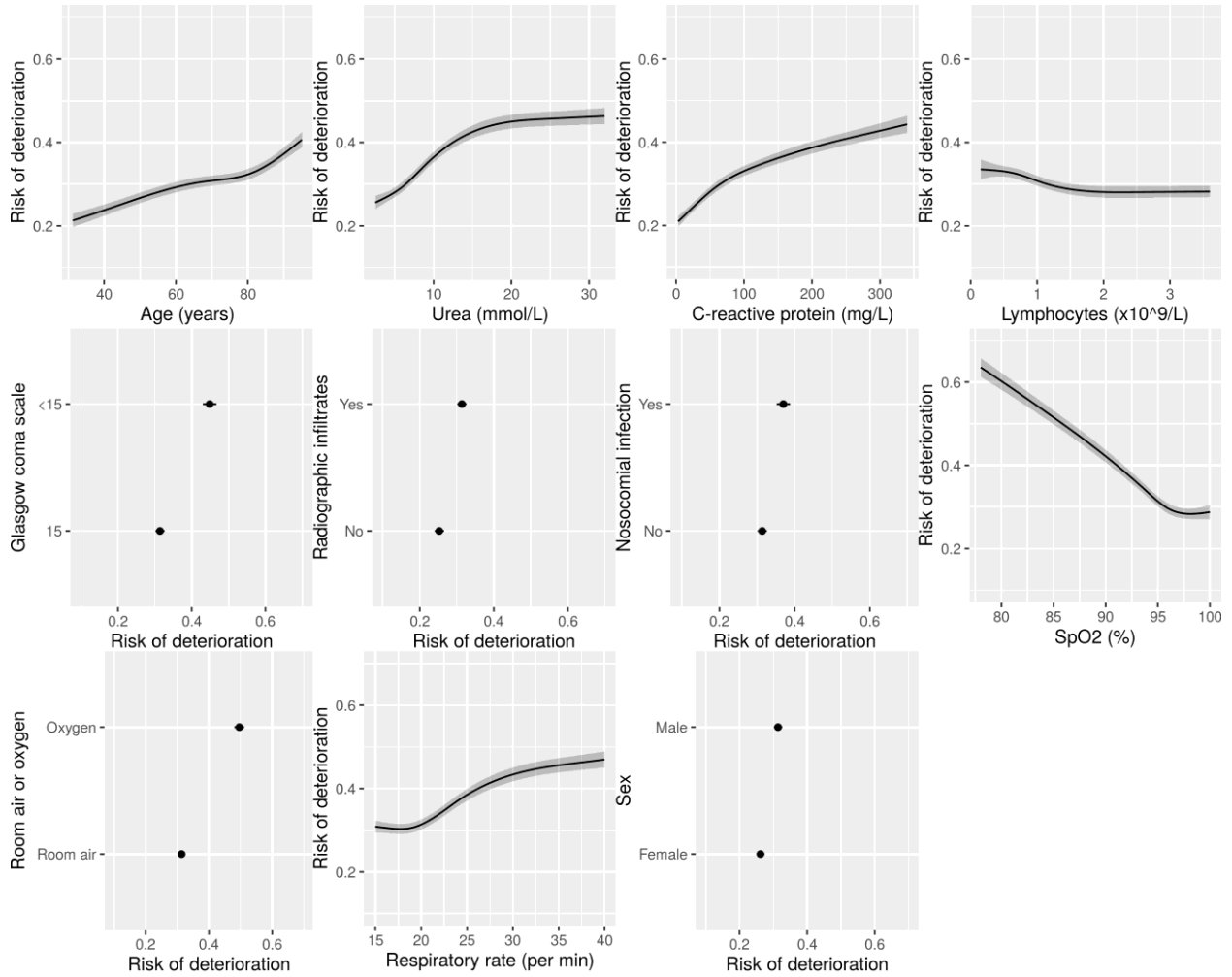
Supplementary Figure 4: Decision curve analysis during internal-external cross validation.

Shown for the 4C Deterioration model without recalibration to local region. Net benefit is shown for each candidate model compared to the 'treat all' and 'treat none' approaches. Points score models are recalibrated to the validation data, resulting in optimistic estimates of net benefit for these models. Total sample size = 66,764 participants.



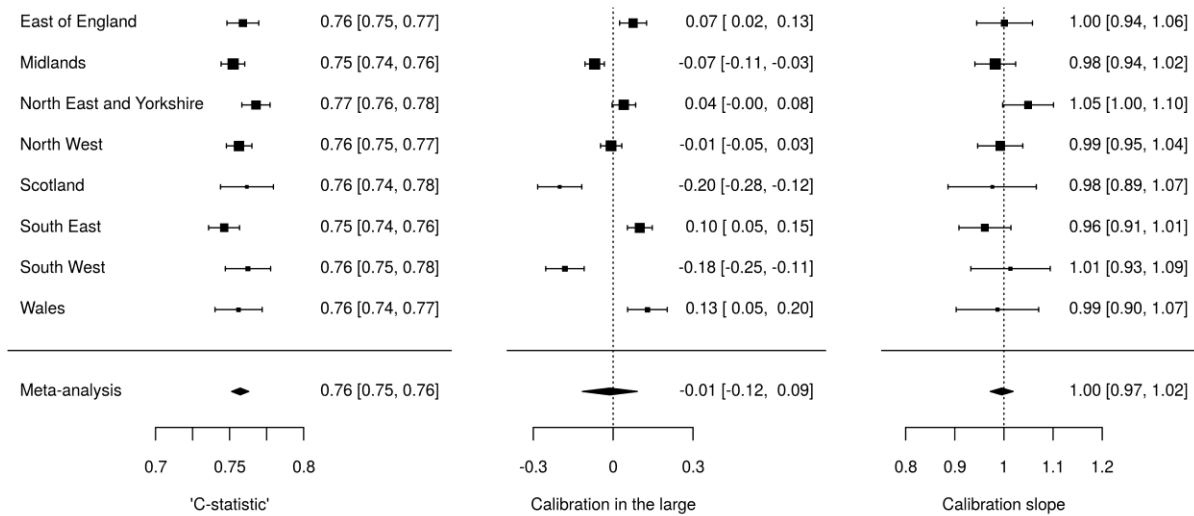
Supplementary Figure 5: Multivariable associations between predictors and outcome using alternative multiple imputation approach as sensitivity analysis.

Total development sample size = 66,764 participants. Black lines indicate point estimates; grey shaded regions indicate 95% confidence intervals.



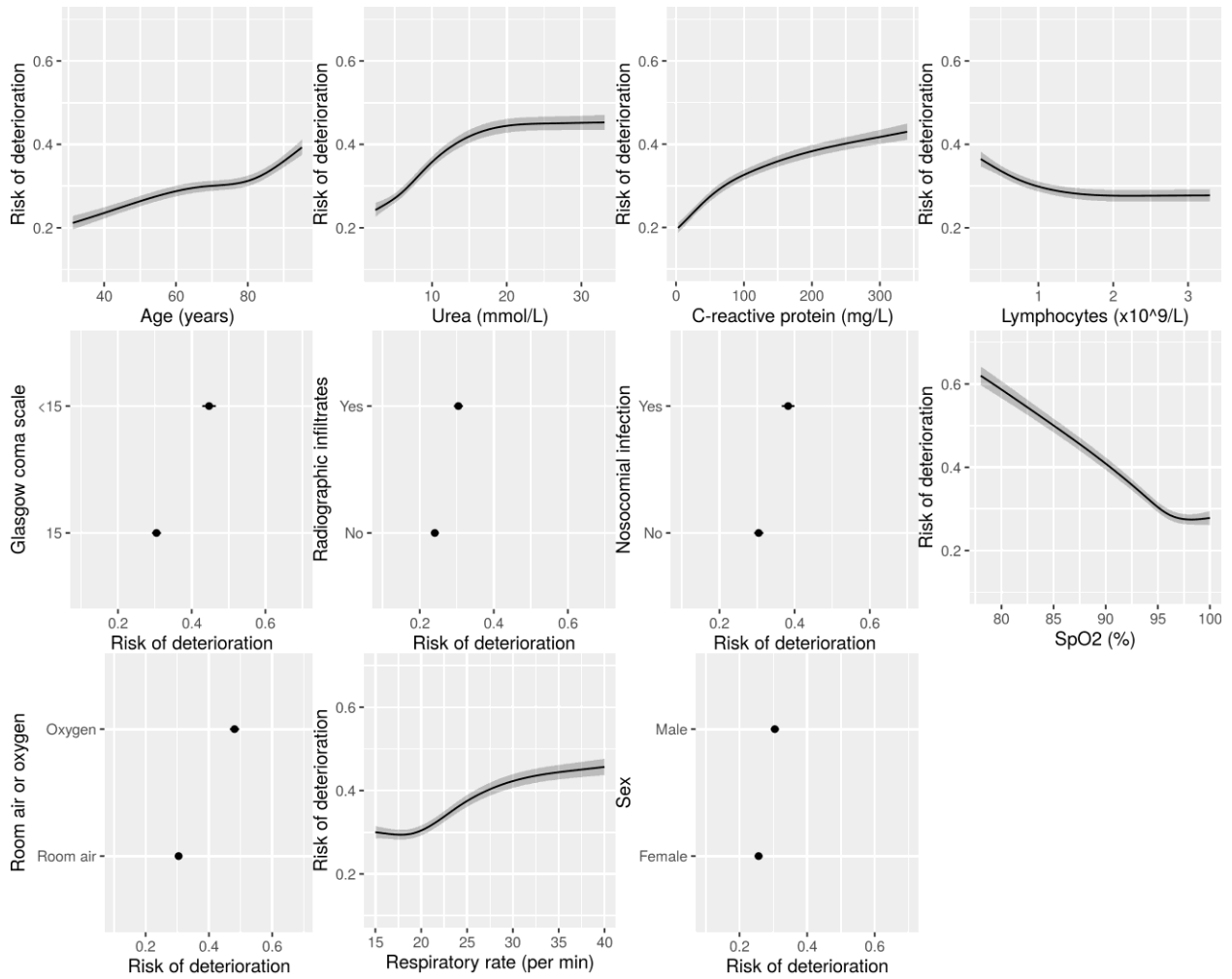
Supplementary Figure 6: Internal-external cross validation of model by NHS region using alternative multiple imputation approach as sensitivity analysis.

Pooled estimates are calculated through random-effects meta-analysis. Total sample size = 66,764 participants. Black squares indicate point estimates; bars indicate 95% confidence intervals; diamonds indicate pooled random-effects meta-analysis estimates.



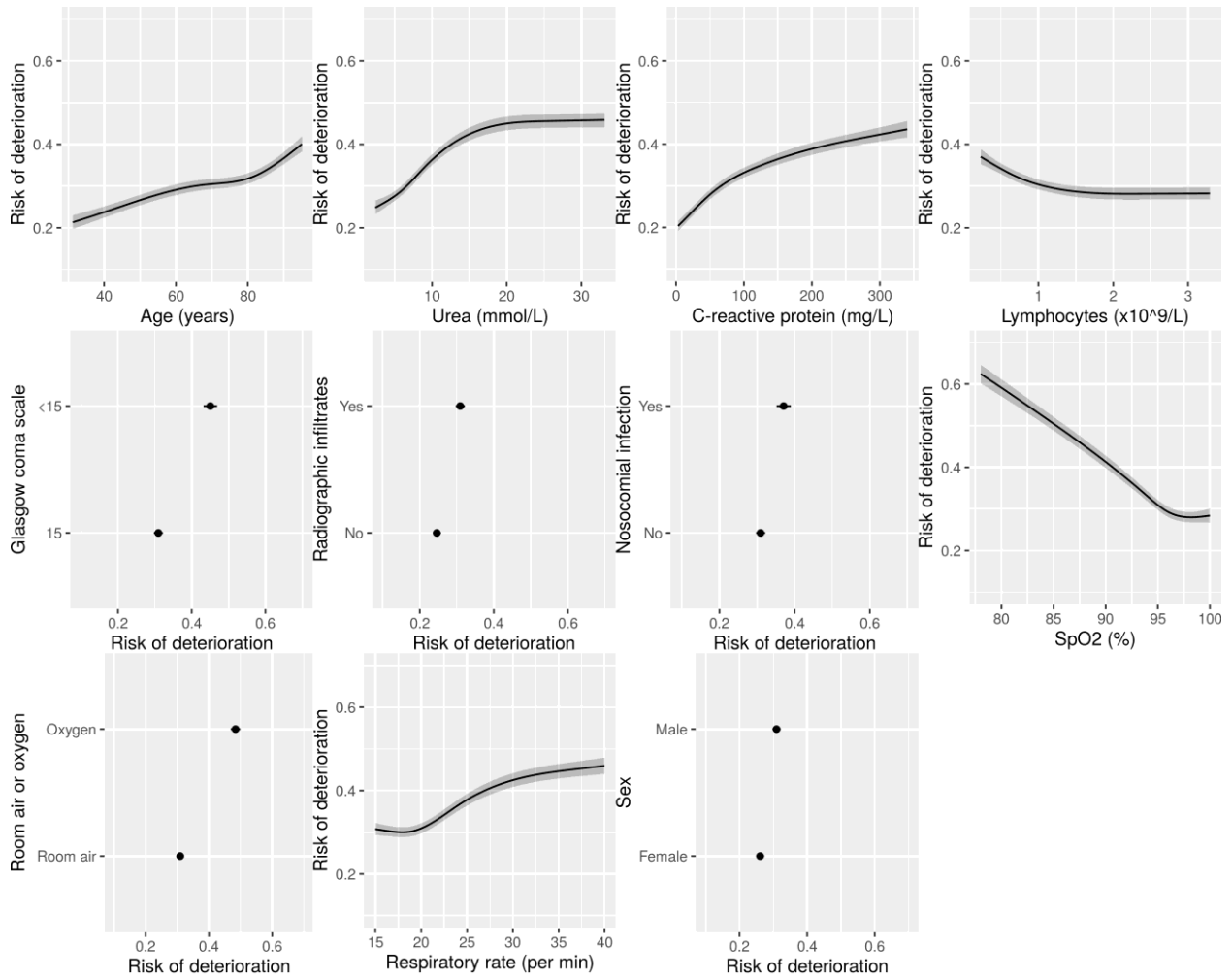
Supplementary Figure 7: Multivariable associations between predictors and outcome using alternative definition of nosocomial infection (>5 days from admission) as sensitivity analysis.

Total development sample size = 66,764 participants. Black lines indicate point estimates; grey shaded regions indicate 95% confidence intervals.



Supplementary Figure 8: Multivariable associations between predictors and outcome using alternative definition of nosocomial infection (>10 days from admission) as sensitivity analysis.

Total development sample size = 66,764 participants. Black lines indicate point estimates; grey shaded regions indicate 95% confidence intervals.



Supplementary Table 1: Characteristics of the study cohort, stratified by community vs nosocomial infection.

Characteristic	Overall, N = 75,016	No, N = 66,995 ¹	Yes, N = 7,385 ¹	(Missing), N = 636 ¹
Age (years)	75 (60, 84)	74 (59, 84)	80 (69, 87)	78 (63, 87)
Sex				
Female	32,846 (44%)	29,061 (43%)	3,479 (47%)	306 (48%)
Male	42,026 (56%)	37,815 (57%)	3,882 (53%)	329 (52%)
Unknown	144	119	24	1
Ethnicity				
White	55,079 (83%)	48,719 (82%)	5,900 (91%)	460 (89%)
South Asian	3,520 (5.3%)	3,358 (5.6%)	149 (2.3%)	13 (2.5%)
Black	2,554 (3.8%)	2,432 (4.1%)	107 (1.7%)	15 (2.9%)
East Asian	492 (0.7%)	474 (0.8%)	17 (0.3%)	1 (0.2%)
Other	4,848 (7.3%)	4,514 (7.6%)	307 (4.7%)	27 (5.2%)
Unknown	8,523	7,498	905	120
Number of comorbidities	1 (1, 2)	1 (1, 2)	2 (1, 3)	1 (1, 2)
Unknown	840	655	59	126
Radiographic infiltrates	29,594 (62%)	28,460 (63%)	1,047 (48%)	87 (40%)
Unknown	27,245	21,609	5,220	416
Temperature (°C)	37.2 (36.5, 38.1)	37.2 (36.6, 38.1)	36.8 (36.4, 37.6)	36.7 (36.3, 37.1)
Unknown	3,110	2,366	582	162
Heart rate (per min)	90 (78, 104)	90 (78, 105)	85 (72, 98)	86 (74, 98)
Unknown	3,389	2,535	685	169
Respiratory rate (per min)	20 (18, 26)	22 (18, 26)	18 (17, 20)	18 (17, 20)
Unknown	3,537	2,592	782	163
Systolic blood pressure (mmHg)	130 (114, 147)	130 (114, 146)	130 (113, 148)	131 (115, 152)
Unknown	3,192	2,359	674	159
Diastolic blood pressure (mmHg)	74 (64, 84)	74 (65, 84)	72 (62, 82)	74 (65, 84)
Unknown	3,335	2,485	690	160
SpO ₂ (%)	95 (92, 97)	95 (92, 97)	96 (94, 98)	96 (95, 98)
Unknown	3,760	2,873	724	163
Room air or oxygen				
Room air	48,626 (69%)	42,466 (67%)	5,763 (88%)	397 (87%)
Oxygen	21,469 (31%)	20,591 (33%)	819 (12%)	59 (13%)
Unknown	4,921	3,938	803	180
Glasgow coma scale	15 (15, 15)	15 (15, 15)	15 (15, 15)	15 (15, 15)
Unknown	7,849	6,691	942	216
Haemoglobin (g/L)	128 (112, 142)	129 (113, 143)	111 (95, 128)	120 (104, 135)
Unknown	11,781	8,426	3,171	184
White cell count (x10 ⁹ /L)	7.5 (5.4, 10.7)	7.6 (5.5, 10.7)	7.2 (5.2, 10.2)	8.4 (5.9, 11.3)
Unknown	12,163	8,777	3,199	187
Lymphocytes (x10 ⁹ /L)	0.90 (0.60, 1.30)	0.90 (0.60, 1.30)	0.90 (0.60, 1.30)	1.00 (0.60, 1.40)
Unknown	12,377	8,953	3,236	188

Characteristic	Overall, N = 75,016	No, N = 66,995 ¹	Yes, N = 7,385 ¹	(Missing), N = 636 ¹
Neutrophils (x10 ⁹ /L)	5.8 (3.9, 8.7)	5.8 (3.9, 8.7)	5.3 (3.5, 8.2)	6.4 (4.2, 9.4)
Unknown	12,341	8,932	3,223	186
Platelets (x10 ⁹ /L)	221 (167, 291)	219 (166, 287)	246 (178, 332)	241 (180, 312)
Unknown	12,496	9,075	3,234	187
Alanine aminotransferase (IU/L)	25 (16, 43)	25 (16, 43)	21 (14, 37)	20 (13, 39)
Unknown	26,783	21,411	5,064	308
Bilirubin (mg/dL)	10 (7, 14)	10 (7, 14)	8 (5, 13)	10 (7, 16)
Unknown	22,979	17,790	4,883	306
Urea (mmol/L)	7 (5, 11)	7 (5, 11)	7 (5, 11)	8 (5, 12)
Unknown	18,554	14,652	3,661	241
Creatinine (µmol/L)	86 (67, 121)	86 (67, 121)	81 (60, 116)	89 (67, 123)
Unknown	12,693	9,286	3,214	193
Sodium (mmol/L)	137 (134, 140)	137 (134, 140)	137 (134, 141)	137 (134, 141)
Unknown	12,312	8,949	3,170	193
C-reactive protein (mg/L)	80 (33, 154)	82 (34, 156)	53 (20, 107)	52 (12, 120)
Unknown	16,353	12,558	3,561	234
NHS region				
East of England	7,865 (10%)	7,190 (11%)	576 (7.8%)	99 (16%)
London	8,252 (11%)	7,722 (12%)	477 (6.5%)	53 (8.3%)
Midlands	15,599 (21%)	14,059 (21%)	1,464 (20%)	76 (12%)
North East and Yorkshire	10,310 (14%)	9,393 (14%)	862 (12%)	55 (8.6%)
North West	12,930 (17%)	11,142 (17%)	1,661 (22%)	127 (20%)
Scotland	3,068 (4.1%)	2,812 (4.2%)	243 (3.3%)	13 (2.0%)
South East	9,450 (13%)	8,310 (12%)	975 (13%)	165 (26%)
South West	3,919 (5.2%)	3,495 (5.2%)	407 (5.5%)	17 (2.7%)
Wales	3,623 (4.8%)	2,872 (4.3%)	720 (9.7%)	31 (4.9%)
Deterioration				
Ventilatory support or HDU/ICU	15,089 (20%)	14,435 (22%)	592 (8.0%)	62 (9.7%)
Died	16,904 (23%)	14,692 (22%)	2,111 (29%)	101 (16%)
No deterioration	42,025 (56%)	37,142 (55%)	4,538 (61%)	345 (54%)
(Missing)	998 (1.3%)	726 (1.1%)	144 (1.9%)	128 (20%)
Days from admission to COVID-19 assessment	0 (0, 0)	0 (0, 0)	18 (11, 35)	0 (0, 2)
Unknown	1,775	1,611	104	60

¹Statistics presented: median (IQR); n (%)

Supplementary Table 2: Final model parameters for 4C Deterioration prognostic model.

Parameters are pooled across multiply imputed datasets. Total development sample size = 66,764 participants.

Characteristic	log(OR) ¹	95% CI ¹	p-value
Intercept	3.947	3.099, 4.569	<0.001
Age (years)	0.0159	0.0132, 0.0206	<0.001
Age (spline 1)	-0.0132	-0.0211, -0.0082	<0.001
Age (spline 2)	0.1268	0.0889, 0.1833	<0.001
Sex			
Female	—	—	
Male	0.2383	0.2057, 0.2770	<0.001
Nosocomial			
No	—	—	
Yes	0.3026	0.2412, 0.3566	<0.001
Radiographic infiltrates			
No	—	—	
Yes	0.3185	0.2830, 0.3560	<0.001
Respiratory rate (per min)	-0.0145	-0.0255, 0.0000	0.026
Respiratory rate (spline 1)	0.6048	0.4780, 0.7249	<0.001
Respiratory rate (spline 2)	-1.088	-1.301, -0.8701	<0.001
SpO2 (%)	-0.0698	-0.0772, -0.0620	<0.001
SpO2 (spline 1)	-0.0251	-0.0378, -0.0083	<0.001
SpO2 (spline 2)	1.010	0.5945, 1.263	<0.001
Room air or oxygen			
Room air	—	—	
Oxygen therapy	0.7446	0.6952, 0.7729	<0.001
GCS			
15	—	—	
<15	0.6085	0.5456, 0.6479	<0.001
Urea (mmol/L)	0.0533	0.0299, 0.0775	<0.001
Urea (spline 1)	0.4277	0.1137, 0.7135	0.005
Urea (spline 2)	-1.019	-1.562, -0.4241	<0.001
C-reactive protein (mg/L)	0.0098	0.0080, 0.0112	<0.001
C-reactive protein (spline 1)	-0.0389	-0.0528, -0.0226	<0.001
C-reactive protein (spline 2)	0.0577	0.0303, 0.0820	<0.001
Lymphocytes (x10 ⁹ /L)	-0.4708	-0.6094, -0.2693	<0.001
Lymphocytes (spline 1)	0.9161	-0.3816, 1.841	0.11
Lymphocytes (spline 2)	-1.235	-3.237, 1.560	0.3

¹OR = Odds Ratio, CI = Confidence Interval

Restricted cubic spline knot positions are:

- Age = 38.5, 67.7, 81.1, 92.9;

Characteristic	log(OR) ¹	95% CI ¹	p-value
- Respiratory rate = 16, 19, 24, 37;			
- SpO2 = 84, 94, 96, 100;			
- Urea = 2.9, 5.7, 9.1, 25.3;			
- C-reactive protein = 5, 45, 112, 294;			
- Lymphocytes = 0.3, 0.7, 1.1, 2.4.			

Supplementary Table 3: Validation in complete case London data as sensitivity analysis.

Models are shown for prediction of in-hospital clinical deterioration and are sorted by C-statistic. CITL = calibration-in-the-large. 'Original outcome' column indicates original intended outcome for each candidate model during development. CITL and slopes are not shown for points score models since they are not on probability scale.

Score	Original outcome	n	C-statistic	CITL	Slope
4C Deterioration	Deterioration (in-hospital)	3769	0.76 (0.75 - 0.78)	-0.06 (-0.13 - 0.01)	0.97 (0.89 - 1.04)
NEWS2	Deterioration (1 day)	6422	0.68 (0.67 - 0.7)		
Zhang "death"	Mortality (in-hospital)	6297	0.68 (0.67 - 0.69)	2.33 (2.27 - 2.4)	0.21 (0.18 - 0.23)
Zhang "poor"	Deterioration (in-hospital)	6297	0.67 (0.66 - 0.69)	0.63 (0.57 - 0.7)	0.16 (0.14 - 0.18)
REMS	Mortality (in-hospital)	6515	0.66 (0.65 - 0.67)		
4C Mortality	Mortality (in-hospital)	5214	0.66 (0.64 - 0.67)		
DS-CURB65	Mortality (30 days)	4832	0.66 (0.64 - 0.67)		
A-DROP	Mortality (30 days)	5051	0.64 (0.63 - 0.66)		
CURB65	Mortality (30 days)	5080	0.64 (0.63 - 0.66)		
qSOFA	Mortality (in-hospital)	6754	0.63 (0.62 - 0.64)		
MEWS	Deterioration (in-hospital)	6575	0.62 (0.61 - 0.64)		
Lu	Mortality (12 days)	6627	0.61 (0.6 - 0.62)		

Supplementary Table 4: Validation in London data excluding deterioration events on day 0 as sensitivity analysis (n = 7,114 participants).

Models are shown for prediction of in-hospital clinical deterioration and are sorted by C-statistic. CITL = calibration-in-the-large. 'Original outcome' column indicates original intended outcome for each candidate model during development. CITL and slopes are not shown for points score models since they are not on probability scale.

Score	Original outcome	C-statistic
4C Deterioration	Deterioration (in-hospital)	0.75 (0.73 - 0.76)
4C Mortality	Mortality (in-hospital)	0.7 (0.68 - 0.71)
DS-CURB65	Mortality (30 days)	0.68 (0.66 - 0.69)
REMS	Mortality (in-hospital)	0.67 (0.66 - 0.68)
A-DROP	Mortality (30 days)	0.66 (0.65 - 0.68)
CURB65	Mortality (30 days)	0.66 (0.65 - 0.68)
NEWS2	Deterioration (1 day)	0.66 (0.65 - 0.68)
Zhang "poor"	Deterioration (in-hospital)	0.66 (0.65 - 0.68)
Zhang "death"	Mortality (in-hospital)	0.66 (0.64 - 0.67)
Lu	Mortality (12 days)	0.64 (0.63 - 0.65)
qSOFA	Mortality (in-hospital)	0.61 (0.6 - 0.63)
MEWS	Deterioration (in-hospital)	0.6 (0.58 - 0.61)

Supplementary Table 5: Validation in London data excluding patients still hospitalised at the end of follow-up as sensitivity analysis (n = 7,926 participants).

Models are shown for prediction of in-hospital clinical deterioration and are sorted by C-statistic. CITL = calibration-in-the-large. 'Original outcome' column indicates original intended outcome for each candidate model during development. CITL and slopes are not shown for points score models since they are not on probability scale.

Score	Original outcome	C-statistic	CITL	Slope
4C Deterioration	Deterioration (in-hospital)	0.77 (0.76 - 0.78)	0.1 (0.04 - 0.15)	0.98 (0.92 - 1.04)
NEWS2	Deterioration (1 day)	0.69 (0.68 - 0.7)		
4C Mortality	Mortality (in-hospital)	0.68 (0.66 - 0.69)		
Zhang "poor"	Deterioration (in-hospital)	0.68 (0.66 - 0.69)	0.68 (0.61 - 0.74)	0.17 (0.14 - 0.19)
Zhang "death"	Mortality (in-hospital)	0.68 (0.66 - 0.69)	2.37 (2.31 - 2.43)	0.19 (0.16 - 0.22)
REMS	Mortality (in-hospital)	0.67 (0.66 - 0.68)		
DS-CURB65	Mortality (30 days)	0.67 (0.66 - 0.68)		
CURB65	Mortality (30 days)	0.66 (0.65 - 0.67)		
A-DROP	Mortality (30 days)	0.66 (0.64 - 0.67)		
qSOFA	Mortality (in-hospital)	0.63 (0.62 - 0.64)		
MEWS	Deterioration (in-hospital)	0.63 (0.61 - 0.64)		
Lu	Mortality (12 days)	0.62 (0.61 - 0.63)		

Supplementary Table 6: Validation in London data stratified by (a) community (n = 7,771 participants) vs (b) nosocomial infection (n = 481 participants) as sensitivity analysis.

Models are shown for prediction of in-hospital clinical deterioration and are sorted by C-statistic. CITL = calibration-in-the-large. 'Original outcome' column indicates original intended outcome for each candidate model during development. CITL and slopes are not shown for points score models since they are not on probability scale.

(a)

Score	Original outcome	C-statistic	CITL	Slope
4C Deterioration	Deterioration (in-hospital)	0.77 (0.76 - 0.78)	-0.01 (-0.07 - 0.04)	0.97 (0.91 - 1.03)
NEWS2	Deterioration (1 day)	0.7 (0.68 - 0.71)		
Zhang "death"	Mortality (in-hospital)	0.67 (0.66 - 0.69)	2.21 (2.15 - 2.28)	0.19 (0.16 - 0.22)
4C Mortality	Mortality (in-hospital)	0.67 (0.66 - 0.68)		
REMS	Mortality (in-hospital)	0.67 (0.66 - 0.68)		
Zhang "poor"	Deterioration (in-hospital)	0.67 (0.66 - 0.68)	0.51 (0.45 - 0.58)	0.16 (0.13 - 0.18)
DS-CURB65	Mortality (30 days)	0.66 (0.65 - 0.67)		
A-DROP	Mortality (30 days)	0.65 (0.64 - 0.66)		
CURB65	Mortality (30 days)	0.65 (0.64 - 0.66)		
MEWS	Deterioration (in-hospital)	0.63 (0.62 - 0.65)		
qSOFA	Mortality (in-hospital)	0.63 (0.62 - 0.64)		
Lu	Mortality (12 days)	0.62 (0.6 - 0.63)		

(b)

Score	Original outcome	C-statistic	CITL	Slope
4C Deterioration	Deterioration (in-hospital)	0.72 (0.67 - 0.77)	0.37 (0.17 - 0.56)	0.94 (0.68 - 1.2)
4C Mortality	Mortality (in-hospital)	0.67 (0.62 - 0.72)		
Zhang "poor"	Deterioration (in-hospital)	0.65 (0.6 - 0.71)	1 (0.75 - 1.26)	0.1 (0.01 - 0.19)
Zhang "death"	Mortality (in-hospital)	0.65 (0.6 - 0.71)	2.95 (2.67 - 3.22)	0.12 (0.01 - 0.23)
DS-CURB65	Mortality (30 days)	0.65 (0.6 - 0.7)		
NEWS2	Deterioration (1 day)	0.65 (0.6 - 0.7)		
Lu	Mortality (12 days)	0.64 (0.6 - 0.69)		
A-DROP	Mortality (30 days)	0.64 (0.59 - 0.69)		
CURB65	Mortality (30 days)	0.63 (0.58 - 0.68)		
MEWS	Deterioration (in-hospital)	0.6 (0.55 - 0.65)		
REMS	Mortality (in-hospital)	0.6 (0.55 - 0.65)		
qSOFA	Mortality (in-hospital)	0.59 (0.54 - 0.63)		

Supplementary Table 7: Validation parameters of prognostic model among community-acquired cases in London, excluding those with symptom onset recorded after admission date, as sensitivity analysis (n = 7,167 participants).

Models are shown for prediction of in-hospital clinical deterioration and are sorted by C-statistic. CITL = calibration-in-the-large. 'Original outcome' column indicates original intended outcome for each candidate model during development. CITL and slopes are not shown for points score models since they are not on probability scale.

Score	Original outcome	C-statistic	CITL	Slope
4C Deterioration	Deterioration (in-hospital)	0.77 (0.75 - 0.78)	-0.01 (-0.07 - 0.04)	0.97 (0.9 - 1.03)
NEWS2	Deterioration (1 day)	0.69 (0.68 - 0.71)		
Zhang "death"	Mortality (in-hospital)	0.67 (0.66 - 0.69)	2.24 (2.17 - 2.31)	0.19 (0.15 - 0.22)
REMS	Mortality (in-hospital)	0.67 (0.65 - 0.68)		
Zhang "poor"	Deterioration (in-hospital)	0.67 (0.65 - 0.68)	0.56 (0.5 - 0.63)	0.15 (0.12 - 0.18)
4C Mortality	Mortality (in-hospital)	0.66 (0.65 - 0.68)		
DS-CURB65	Mortality (30 days)	0.66 (0.65 - 0.67)		
CURB65	Mortality (30 days)	0.65 (0.64 - 0.66)		
A-DROP	Mortality (30 days)	0.65 (0.63 - 0.66)		
qSOFA	Mortality (in-hospital)	0.63 (0.62 - 0.64)		
MEWS	Deterioration (in-hospital)	0.63 (0.61 - 0.64)		
Lu	Mortality (12 days)	0.61 (0.6 - 0.62)		

Supplementary Table 8: Validation parameters of prognostic model in London cohort using alternative multiple imputation approach as sensitivity analysis (n = 8,252 participants).

Models are shown for prediction of in-hospital clinical deterioration and are sorted by C-statistic. CITL = calibration-in-the-large. 'Original outcome' column indicates original intended outcome for each candidate model during development. CITL and slopes are not shown for points score models since they are not on probability scale.

Score	Original outcome	C-statistic	CITL	Slope
4C Deterioration	Deterioration (in-hospital)	0.76 (0.75 - 0.77)	0 (-0.05 - 0.05)	0.93 (0.88 - 0.99)
NEWS2	Deterioration (1 day)	0.68 (0.67 - 0.7)		
4C Mortality	Mortality (in-hospital)	0.66 (0.65 - 0.67)		
REMS	Mortality (in-hospital)	0.66 (0.65 - 0.67)		
DS-CURB65	Mortality (30 days)	0.65 (0.64 - 0.66)		
Zhang "death"	Mortality (in-hospital)	0.65 (0.64 - 0.66)	2.07 (2 - 2.13)	0.14 (0.11 - 0.16)
Zhang "poor"	Deterioration (in-hospital)	0.65 (0.63 - 0.66)	0.33 (0.26 - 0.4)	0.11 (0.09 - 0.13)
CURB65	Mortality (30 days)	0.64 (0.63 - 0.66)		
A-DROP	Mortality (30 days)	0.64 (0.63 - 0.65)		
qSOFA	Mortality (in-hospital)	0.62 (0.61 - 0.64)		
MEWS	Deterioration (in-hospital)	0.62 (0.61 - 0.63)		
Lu	Mortality (12 days)	0.61 (0.6 - 0.62)		