

Appendix

Systematic review - search strategy

The search strategy focused on key words including CVD, type 2 diabetes, risk assessment or risk score and names of known risk scores. Appendix Figure 1 shows the search query to MEDLINE that we used as an extension of the search query previously performed¹. In order to limit the number of irrelevant articles, we altered most of the Mesh headings to only search for major entries, excluding subheadings. The search query was limited to articles published between 2008-06-30 and 2019-01-16.

Reference lists of papers and validation publications such as^{1, 2, 3} were screened to identify additional publications reporting risk prediction models.

Appendix Figure 1 Search query used for literature search. Search query was limited to articles published between 2008-06-30 and 2019-01-16.

(diabetes mellitus, type 2[Majr:NoExp] OR diabetes mellitus type 2[Title/Abstract] OR Diabetic Angiopathies[Majr:NoExp] OR diabetic angiopath*[Title/Abstract])

AND

(risk assessment[Majr:NoExp] OR risk assessment*[Title/Abstract] OR predictive value of tests[Majr] OR "predictive value of test*" [Title/Abstract] OR sensitivity and specificity[Majr] OR reproducibility of results[MeSH Terms] OR risk score*[Title/Abstract] OR risk calculat*[Title/Abstract] OR risk engine* OR risk equation*[Title/Abstract] OR risk algorithm*[Title/Abstract] OR risk table*[Title/Abstract] OR risk predict*[Title/Abstract] OR risk function*[Title/Abstract] OR framingham risk*[Title/Abstract] OR framingham equation*[Title/Abstract] OR framingham model*[Title/Abstract] OR PROCAM[Title/Abstract] OR decode[Title/Abstract] OR ukpds[Title/Abstract] OR copenhagen risk*[Title/Abstract] OR British Regional Heart Study[Title/Abstract] OR Swedish National Diabetes Register[Title/Abstract] OR Tayside[Title/Abstract] OR qrisk[Title/Abstract] OR Reynolds risk[Title/Abstract] OR Dundee risk[Title/Abstract] OR brhs score*[Title/Abstract] OR British Family Heart Study[Title/Abstract] OR New Zealand chart[Title/Abstract] OR seven countries study[Title/Abstract] OR Progetto CUORE[Title/Abstract]) AND (Cardiovascular Diseases[MeSH Terms] OR cardiovascular disease*[Title/Abstract] OR cardiovascular disorder*[Title/Abstract] OR Coronary Artery Disease[MeSH Terms] OR coronary artery disease[Title/Abstract] OR coronary artery disorder*[Title/Abstract] OR Stroke[MeSH Terms] OR stroke[Title/Abstract])

Appendix Table 1 Abbreviations used in the appendix

Abbreviation	Full text
C-HF	Congestive Heart Failure
CVD	Cardiovascular disease
CHD	Coronary Heart Disease
HF	Heart Failure
AF	Atrial Fibrillation
MI	Myocardial Infarction
T2DM	Type 2 diabetes
HbA1c	Glycated haemoglobin
SBP	Systolic Blood Pressure
DBP	Diastolic Blood Pressure
ECG	Electrocardiography
HIV	Human Immunodeficiency Virus
Weibull AFT model	Weibull Accelerated Failure Time model
Cox's PH model	Cox Proportional-Hazards Model
CS	Calibration Slope
CIL	Calibration-in-the-large

Outlier Removal

Appendix Table 2 Summary of applied cut-offs for the continuous variables.

Clinical characteristics	Valid data ranges (applied cut-offs)
Age (years)	[18.0, 100.0]
HbA1c (mmol / mol)	[20.0, 120.0]
HDL cholesterol (mmol / L)	[0.0, 20.0]
Total cholesterol (mmol / L)	[0.0, 20.0]
SBP (mm Hg)	[70, 250]
DBP (mm Hg)	[40, 150]
Urine albumin / creatinine ratio (mg / mmol)	[0.0, 200]
Serum creatinine (micromol / L)	[0.0 - 900]

Appendix Table 3 Characteristics of the evaluated CVD risk scores.

Name	Presented models (number of predictors\$ Appendix Table 8)	Year of publication	Derivation sample	Derived with/ without T2DM subjects	Statistical model	Reported type of predicted CVD	Evaluated type of CVD
FINRISK ⁴	Finrisk Stroke (8) Finrisk CHD (8) Finrisk CVD (8)	2016	National FINRISK Study: random population samples of individuals 30 to 64 years of age - North Karelia (Finland); n = 9,391 men and 10,056 women	with T2DM (diabetes included as a risk factor)	Regression model	CHD (MI, unstable angina pectoris, death from CHD), Stroke (infarctions hemorrhage), CVD	Stroke, CHD, CVD
DARTS (Diabetes Audit and Research in Tayside, Scotland) ⁵	DARTS (10)	2006	Tayside, Scotland UK, T2DM without history of CHD	with T2DM (100% T2DM subjects)	Weibull AFT model	First major CHD event (fatal or non-fatal acute MI or CHD death)	CHD
Framingham 1991 ⁶	Framingham 1991 Fatal CHD (8) Framingham 1991 CVD (8) Framingham 1991 Stroke (8)	1991	5,573 US white men and women aged 30 - 74 years without cancer and CVD	with T2DM (diabetes included as a risk factor)	Weibull AFT model	Myocardial infarction, CHD, fatal CHD, stroke, CVD, death from CVD	CHD, CVD, Stroke
Framingham 1998 ⁷	Framingham 1998 (7)	1998	5,345 US white men and women aged 30 - 74	with T2DM (diabetes included as a risk factor)	Cox's PH model	CHD (angina pectoris, recognised and unrecognised MI, coronary insufficiency, CHD death) Hard CHD included total CHD without angina pectoris	CHD
QRISK 2 ⁸	QRISK 2 (13)	2008	2.3 million people, aged 35 - 74, England and Wales, people without previous CVD	with T2DM (diabetes included as a risk factor)	Cox's PH model	CHD, stroke, or transient ischemic attack; not peripheral	CVD
QRISK 3 ⁹	QRISK 3 (19)	2017	7.89 million people, aged 25 -84 years, without CHD and not prescribed statins	with T2DM (diabetes included as a risk factor)	Cox's PH model	CVD defined as a composite outcome of coronary heart disease, ischaemic stroke, or transient ischaemic attack	CVD
SCORE ¹⁰	SCORE CHD (6) SCORE CVD (6)	2003	205,178 European men and women, aged 19 - 80 years without history of MI	without T2DM	Weibull PH model	CHD, CVD, CVD mortality	CHD, CVD

UKPDS 56 ¹¹	UKPDS 56 (9)	2001	4,540 people from U.K. Prospective Diabetes Study, aged 25 - 65 years, without MI, angina or heart failure	with T2DM (100% T2DM subjects)	Cox's PH model	Fatal or non-fatal MI or sudden death	CHD
UKPDS 68 ¹²	UKPDS 68 C-HF (5) UKPDS 68 Stroke (10)	2004	3,641 people with diagnosed diabetes type 2, aged 25 - 65 years	with T2DM (100% T2DM subjects)	Weibull PH model	CVD: MI (fatal and non-fatal myocardial infarction and sudden death), IHD, CHF, Cerebrovascular disease: first non-fatal stroke	HF, Stroke
UKPDS 82 ¹³	UKPDS 82 C-HF (10) UKPDS 82 CHD (15)	2013	5,102 people with diagnosed diabetes type 2, age 25 - 65 years	with T2DM (100% T2DM subjects)	Weibull PH model	MI: acute myocardial infarction or sudden death; Stroke: non-fatal stroke or fatal stroke); chronic ischemic heart disease (IHD); Congestive heart failure (CHF)	HF, CHD
ASCVD Pooled Cohort Risk Equations ¹⁴	ASCVD (9)	2013	24,626 people, white and African-American, aged 40 - 79 years, without CVD	with T2DM (diabetes included as a risk factor)	Cox's PH model	ASCVD event (CHD death, nonfatal myocardial infarction, or fatal or nonfatal stroke)	CVD
RECODE ¹⁵	RECODE (13)	2017	9,635 people from Action to Control Cardiovascular Risk in Diabetes Study	with T2DM (100% T2DM subjects)	Cox PH model	MI, stroke, CHF, cardiovascular mortality	CVD + HF
Reynolds Risk ^{** 16 17}	Reynolds Risk (9)	2007, 2008	Reynolds Risk Score for Men: 10,724 healthy men without diabetic and CVD, aged over 50 years Reynolds Risk Score for Women: 24,558 healthy women, aged over 45 years	with T2DM (diabetes included as a risk factor)	Cox PH model	CVD, CHD, MI, stroke, coronary revascularization, cardiovascular death	CVD
CHS (Cardiovascular Health Study) ^{* 18}	CHS Basic (8) CHS Advanced (9)	2013	782 people with diabetes, without CVD, CHF and AF, aged over 65 years	with T2DM (100% T2DM subjects)	Cox PH model	MI, stroke and death	CVD

*- based on the implementation provided from the Utrecht research team

**- Combined two risk scores: Reynolds Risk Score for Men, Reynolds Risk Score for Women

Appendix Table 4 Predictor variables included in cardiovascular prediction models. (*) Type 2 diabetes means either a risk factor or T2DM derivation population of a risk score.

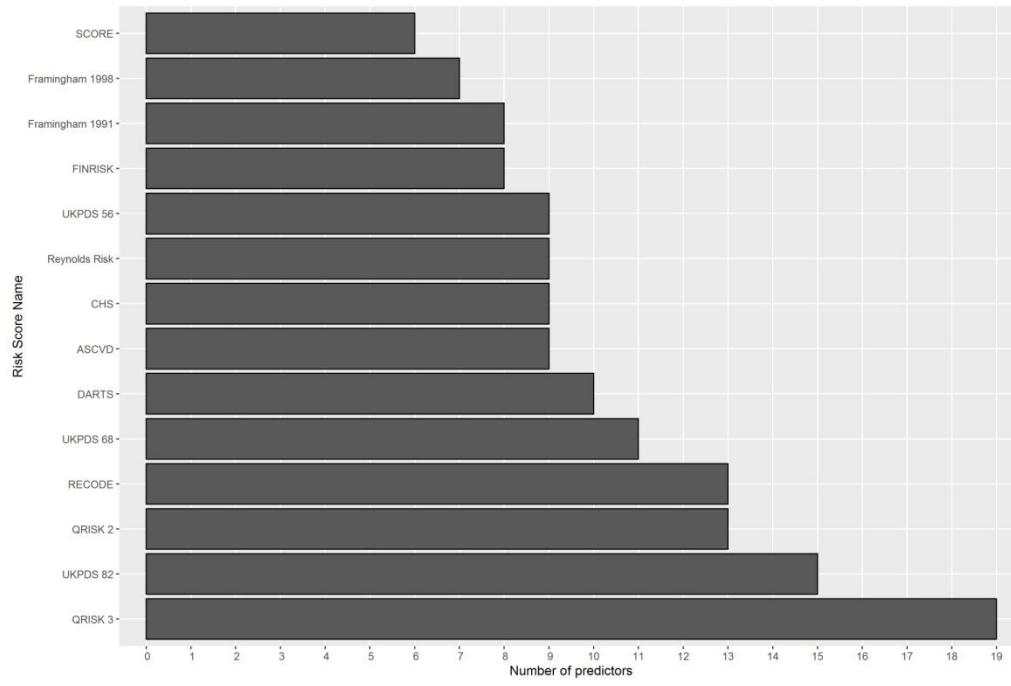
	DARTS [5](a)	UKPDS 56 [11](a)	UKPDS 68 [12](a)	UKPDS 82 [13](a)	RECODE [15](a)	CHS [18](a)	FINRISK [4](b)	Framingham 1991 [6] (b)	Framingham 1998 [7](b)	QRISK 2 [8](b)	QRISK 3 [9](b)	ASCVD [14](b)	Reynolds Risk [16][17](b)	SCORE [10](c)	Number of publications
Age	✓	✓	✓	✓	✓	✓	✓	✓	✓	✓	✓	✓	✓	✓	14
Sex	✓	✓	✓	✓	✓		✓	✓	✓	✓	✓	✓	✓	✓	13
Smoking status	✓	✓	✓	✓	✓	✓	✓	✓	✓	✓	✓	✓	✓	✓	14
SBP or DBP	✓	✓	✓	✓	✓	✓	✓	✓	✓	✓	✓	✓	✓	✓	14
Total cholesterol	✓	✓	✓		✓	✓	✓	✓	✓	✓	✓	✓	✓	✓	13
HDL cholesterol		✓	✓	✓	✓	✓	✓	✓	✓	✓		✓	✓	✓	12
LDL cholesterol				✓											1
Type 2 diabetes*	✓	✓	✓	✓	✓	✓	✓	✓	✓	✓	✓	✓	✓		13
Duration of diabetes	✓			✓											2
HbA _{1c}	✓	✓	✓	✓	✓										5
Treated hypertension	✓				✓					✓	✓	✓			5
Height	✓														1
Left Ventricular Hypertrophy (LVH) ECG								✓							1

Ethnicity		✓		✓	✓					✓	✓	✓				6
BMI			✓	✓						✓						3
AF			✓	✓						✓	✓					4
Townsend Social Deprivation Score										✓	✓					2
Rheumatoid Arthritis (RA)										✓	✓					2
Family history of CVD											✓		✓			2
Type 1 diabetes											✓					1
Chronic kidney disease (CKD)											✓					1
Migraine											✓					1
Corticosteroid use											✓					1
Systemic lupus											✓					1
Atypical antipsychotic											✓					1
Severe mental illness											✓					1
History of CVD			✓	✓	✓		✓									4
Peripheral vascular disease (PVD)				✓												1
White Blood Count (WBC)				✓												1
Presence of micro- or macro albuminuria				✓												1

Serum Creatinine					✓	✓										2
Urine albumin to creatinine ratio					✓											1
High-sensitivity C-reactive protein (hsCRP)						✓							✓			2
Use of glucose-lowering medications						✓										1
Use of statins or anticoagulants					✓											1
Total number of predictors	10	9	11	16	13	9	8	8	7	13	19	9	9	6		

n.b Derivation population: (a) T2DM population, (b) General population, (c) General population excluding T2DM subjects

Appendix Figure 2 Number of predictors used in each of the CVD risk scores



Appendix Table 5 Outcomes definitions based on CALIBER dataset.

Type of cardiovascular disease	Link to CALIBER research platform
Fatal and non fatal MI	https://www.caliberresearch.org/portal/show/phenotype_mi https://www.caliberresearch.org/portal/show/phenotype_chd_nos
Fatal or non fatal Stroke	https://www.caliberresearch.org/portal/show/phenotype_stroke_intracerebral_haem , https://www.caliberresearch.org/portal/show/phenotype_stroke_ischaemic , https://www.caliberresearch.org/portal/show/phenotype_stroke_nos , https://www.caliberresearch.org/portal/show/phenotype_stroke_subarachnoid
Fatal peripheral vascular disease	https://www.caliberresearch.org/portal/show/phenotype_pad
Sudden Cardiac Death	https://www.caliberresearch.org/portal/show/phenotype_scd
HF	https://www.caliberresearch.org/portal/show/phenotype_hf
AF	https://www.caliberresearch.org/portal/show/phenotype_af
Ischemic stroke	https://www.caliberresearch.org/portal/show/phenotype_stroke_ischaemic https://www.caliberresearch.org/portal/show/phenotype_stroke_nos
Haemorrhagic stroke	https://www.caliberresearch.org/portal/show/phenotype_stroke_intracerebral_haem , https://www.caliberresearch.org/portal/show/phenotype_stroke_subarachnoid

Appendix Table 6 T2DM definition based on CALIBER dataset. This is a composite of GP diagnosis of diabetes, diabetes diagnoses from primary and secondary care.

Definition / Data Source	Link to CALIBER research platform
Diabetes Phenotype definition	https://www.caliberresearch.org/portal/show/phenotype_diabetes (extract patients with type 2 diabetes)
GP diagnosis of diabetes	https://www.caliberresearch.org/portal/show/diabdiag_gprd
Diabetes diagnosis (primary care)	https://www.caliberresearch.org/portal/show/dm_gprd
Diabetes diagnosis (secondary care)	https://www.caliberresearch.org/portal/show/dm_hes ICD-10 codes: E10-13, O240-243, G590, G632, H280, H360, M142, N083

Appendix Table 7 Baseline characteristics of T2DM patients at the time of diagnosis.

Clinical characteristics	Available sample (%)
Total no. of subjects	203,172
Rheumatoid arthritis	2,313 (1.1)
Renal disease	12,145 (6.0)
Exercise ECG results	6,909 (3.4)
Anticoagulants use	710 (0.3)
Diuretic use	64,524 (31.8)
Corticosteroids use	11,347 (5.6)
Foot amputation	155 (0.1)
Systemic lupus erythematosus	218 (0.1)
HIV positive	131 (0.1)
Mental disorders	1,399 (0.7)
Microalbuminuria	3 (0.0)
Erectile dysfunction disorder	8,406 (4.1)
Erectile dysfunction drugs	7,638 (3.8)
Hypertension	139,463 (68.6)
Atrial Fibrillation	20,503 (10.1)
Migraine	920 (0.5)
Treated hypertension (blood lowering medication)	99,527 (49.0)
Family history of CVD	52,949 (26.1)
Family history of CHD	439 (0.2)
Family history of MI	57 (0.0)
Family history of Stroke	426 (0.2)

Appendix Table 8 Ethnic origin of T2DM patients.

Clinical characteristics	Available sample (%)
Total no. of subjects	203,172
White British	45,010 (22.2)
White Irish	1,160 (0.6)
White Other	3,608 (1.8)
White NOS	8,496 (4.2)
Mixed White and Black	335 (0.2)
Mixed White and Asian	144 (0.1)
Mixed Asian and Black	90 (0.0)
Mixed Other	275 (0.1)
Mixed NOS	31 (0.0)
Indian	4403 (2.2)
Pakistani	2,335 (1.1)
Bangladeshi	926 (0.5)
Other Asian	2,235 (1.1)
Black Caribbean	1,893 (0.9)
Black African	2,612 (1.3)
Black Other	740 (0.4)
Chinese	414 (0.2)
Other Ethnic Group	2,118 (1.0)
Ethnic Group not specified	126,347 (62.2)

Appendix Table 9 Clinical characteristics of the continuous variables around the time (1 year before - 1 week after) of diagnosis of T2DM.

Clinical characteristics	Mean (SD) or N (%)	Median (Q1; Q3)	Missing data (% of total no. of subjects)
Total no. of subjects	203,172		
Total cholesterol (mmol / L)	5.3 (1.3)	5.2 (4.4; 6.1)	36.9
Triglycerides (serum and plasma) (mmol / L)	2.4 (2.2)	1.9 (1.3; 2.7)	47.8
DBP (mm Hg)	81 (11)	80 (75; 88)	24.8
Urine albumin to creatinine ratio	3.8 (11.6)	1.1 (0.6; 2.5)	89.3
Serum creatinine (micromol / L)	85.7 (26.9)	83.0 (71.0; 96.0)	32.8
C reactive protein (mg / L)	12.6 (25.9)	6.0 (3.0; 12.0)	91.6
Total white blood cell count (10 ⁹ / L)	7.7 (2.3)	7.4 (6.2; 8.8)	52.2

Appendix Table 10 Comparison of clinical characteristics of the continuous variables around the time (1 year before - 1 week after) and (1 year before - 3 months after) of diagnosis of T2DM.

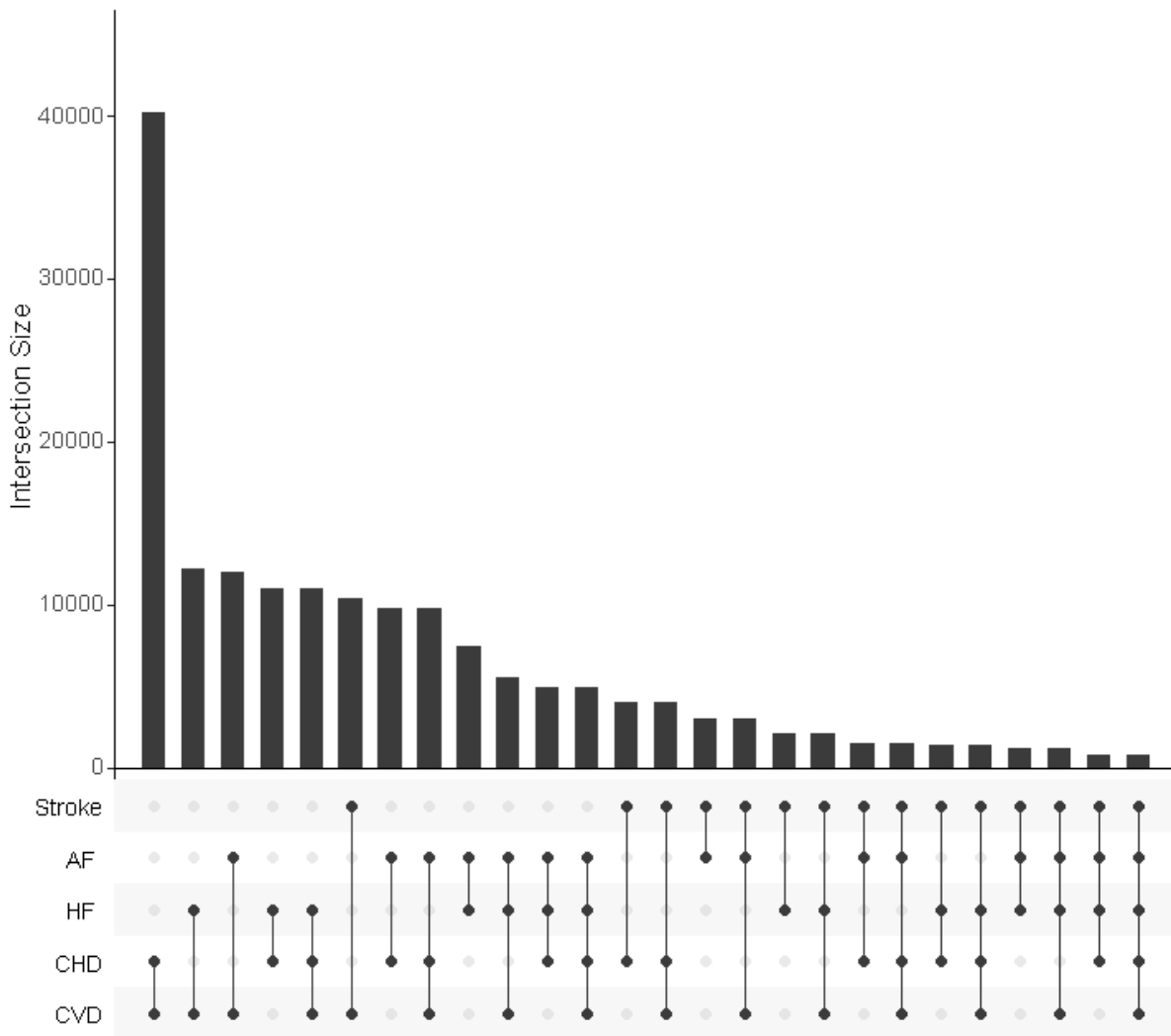
Clinical characteristics	Timeframe: 1 year before and 1 week after the diagnosis of T2DM			Timeframe: 1 year before and 3 months after the diagnosis of T2DM		
	Mean (SD) or N (%)	Median (Q1; Q3)	Missing data (% of total no. of subjects)	Mean (SD) or N (%)	Median (Q1; Q3)	Missing data (% of total no. of subjects)
Total no. of subjects	203,172			203,172		
Follow-up time (years)		10.0 (6.6; 10.0)			10.0 (6.6; 10.0)	
Women (%)	9,108 (44.8)		0.0	91,008 (44.8)		0.0
Age (years)	60.9 (14.0)	61.0 (51.0; 71.0)	0.0	60.9 (14.0)	61.0 (51.0; 71.0)	0.0
HbA1c (mmol/mol)	63.3 (20.2)	56.3 (48.6; 74.0)	55.0	59.9 (18.3)	54.1 (47.5; 68.3)	39.0
FPG (mmol / L)	9.5 (3.9)	8.0 (7.1; 10.6)	68.5	9.2 (3.7)	7.9 (7.0; 10.1)	67.0
BMI (kg / m ²)	31.7 (6.7)	30.7 (27.1; 35.2)	39.9	31.3 (6.5)	30.4 (26.8; 34.7)	29.0
HDL cholesterol (mmol / L)	1.2 (0.4)	1.2 (1.0; 1.4)	47.4	1.2 (0.4)	1.2 (1.0; 1.4)	41.0
LDL cholesterol (mmol / L)	3.1 (1.1)	3.0 (2.3; 3.8)	58.8	2.9	2.8 (2.2; 3.6)	53.0
SBP (mm Hg)	140 (18)	140 (130; 150)	24.8	137 (17)	136 (126; 145)	20.0

Appendix Table 11 The 10-year incidence of cardiovascular disease after a type 2 diabetes diagnosis.

Type of cardiovascular disease	No. events (%)
Total no. of subjects	203,172
CVD, HF, or AF	63,000 (31.07)
CVD	51,636 (25.46)
CHD	40,243 (19.84)
Any stroke	10,413 (5.14)
HF	16,993 (8.38)
AF	20,506 (10.11)

n.b. One patient could have more than one event, but the event type is unique.

Appendix Figure 3 UpSet plot ¹⁹ presenting the intersection between different outcomes.



n.b. UpSet plots the intersections of a set as a matrix, shown at the bottom of bar plot. Each column corresponds to a set, and each row in a matrix corresponds to one segment in a Venn diagram. Cells are either empty (light-gray), indicating that this set is not part of that intersection, or filled, showing that the set is participating in the intersection.

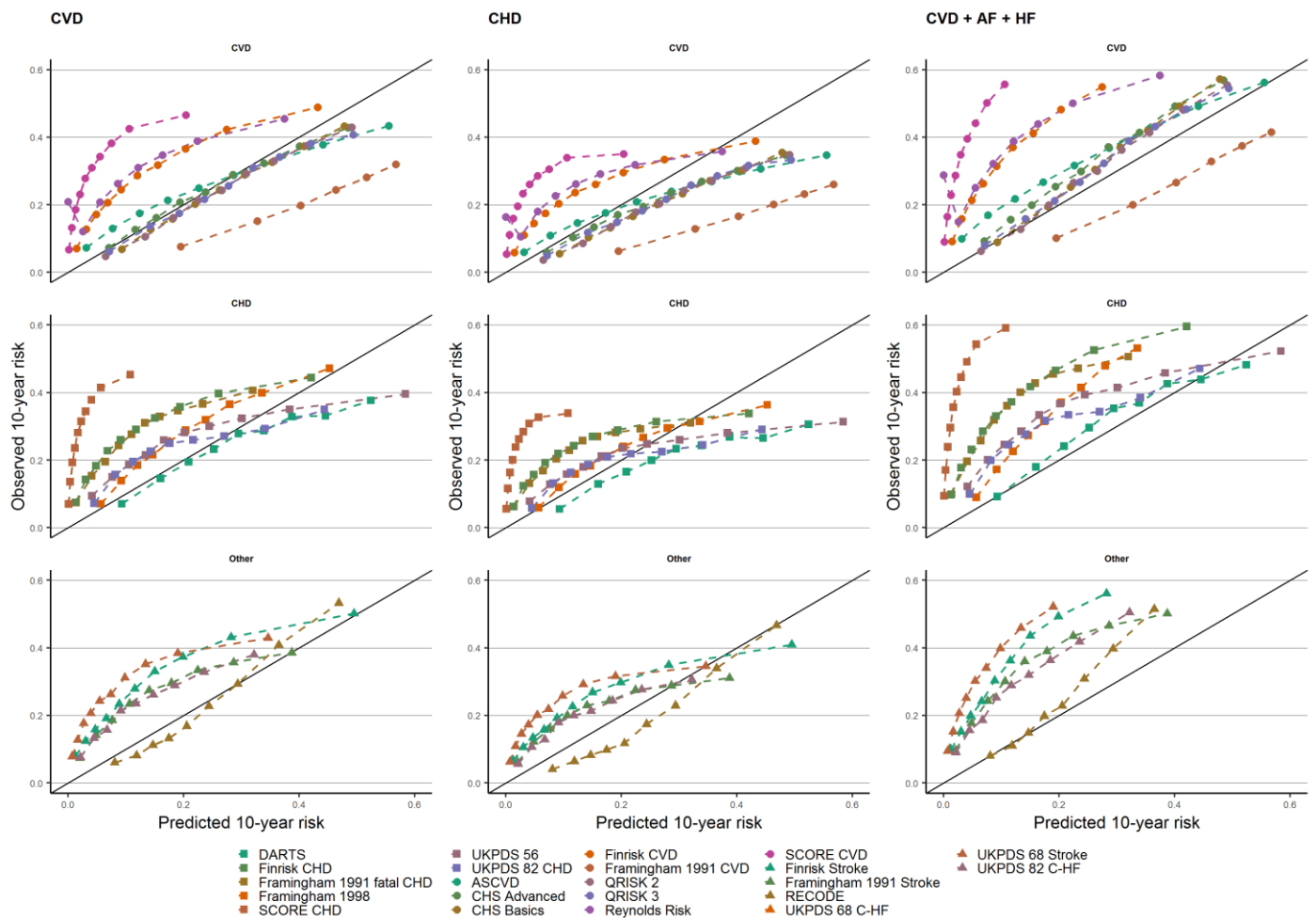
Calibration and Discrimination

The calibration process describes the agreement between the predicted 10-year risk and the observed 10-year risk. Calibration-in-the-large statistics compare the mean predicted risk and mean observed risks. Calibration-in-the-large statistics of value 0 and calibration slopes of value 1 indicate good model's calibration.

The discrimination process describes model's ability to distinguish patients who will develop the CVD event and patients who will not get the CVD event. The discrimination was assessed by calculating Harrell C statistic, a C statistic of value 1 denotes perfect discrimination, and a value of 0.5 denotes almost random prediction.

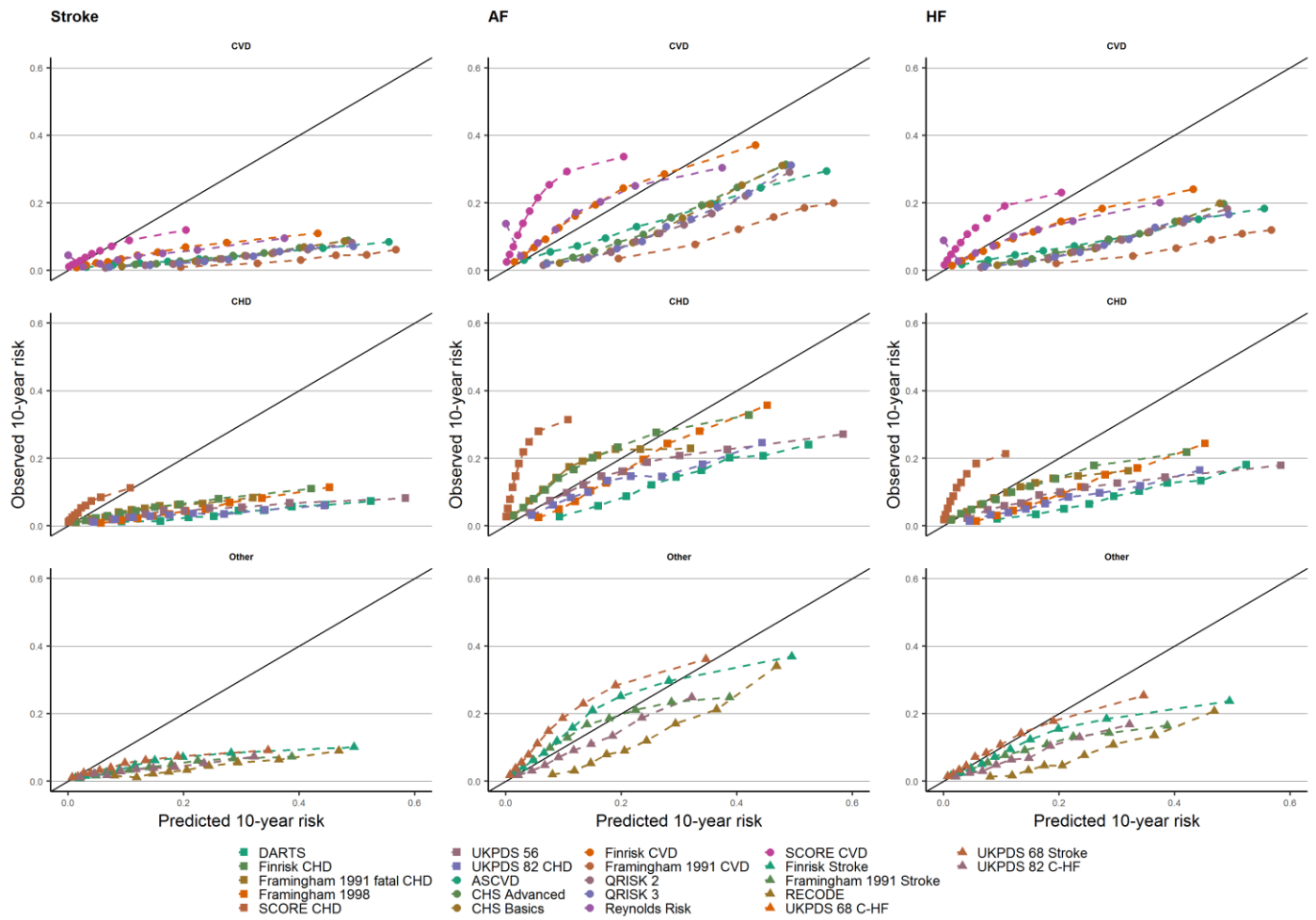
Calibration

Appendix Figure 4: Calibration plots of CVD prediction rules calculated based on a complete-case analysis



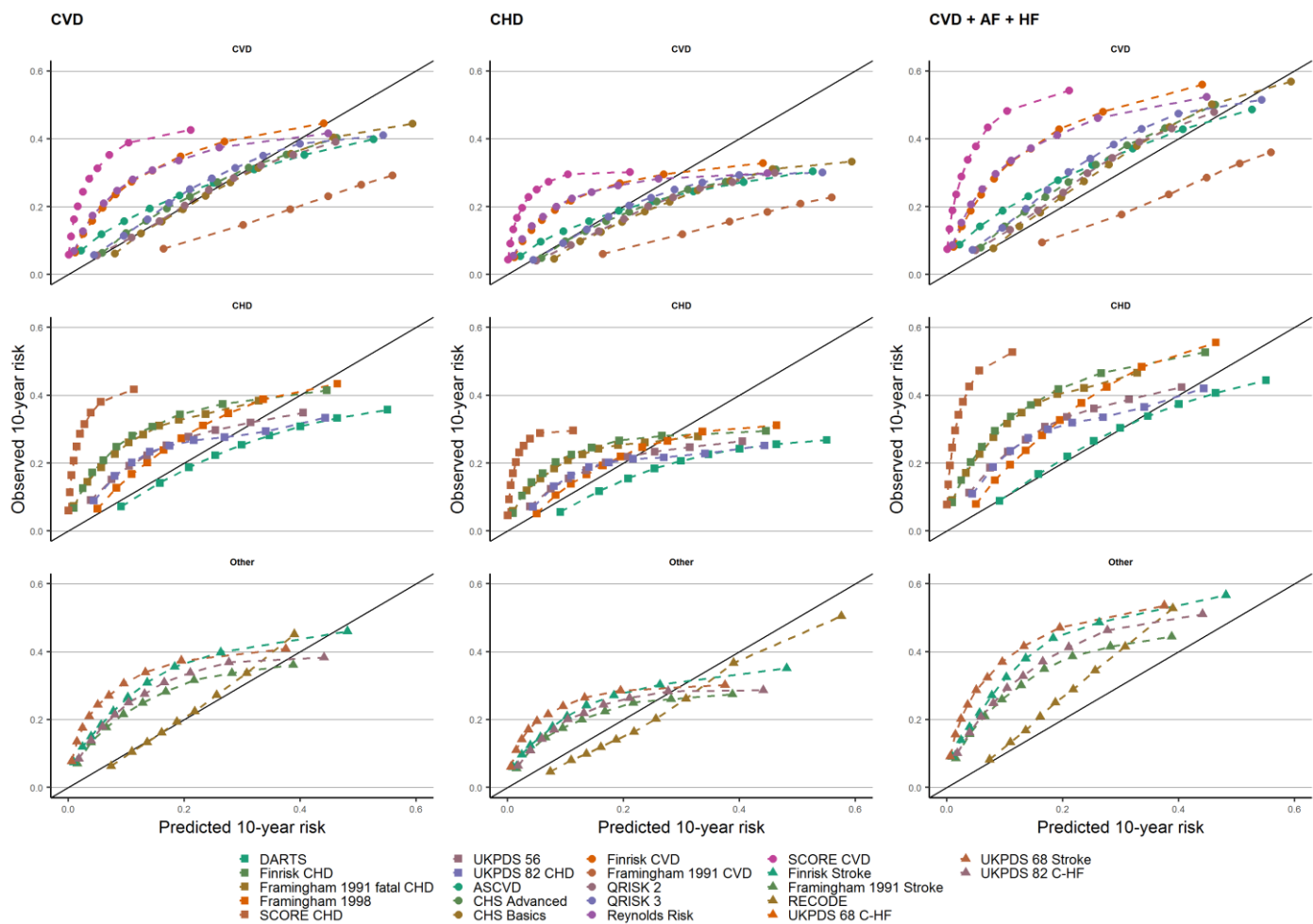
n.b. estimates based on complete-cases from UK sample of T2DM patients. The observed 10-years risk is (y-axes) plotted against the average predicted 10-year risk (x-axis) within groups defined by quintiles of predicted risk. The columns indicate the type of CVD the scores were evaluated against (CVD, CHD, CVD + AF + HF). Scores were grouped by the derivation outcomes CVD, CHD, or other (including Stroke, C-HF)). The diagonal line reflects perfect calibration.

Appendix Figure 5: Calibration plots of CVD prediction rules calculated based on a complete-case analysis



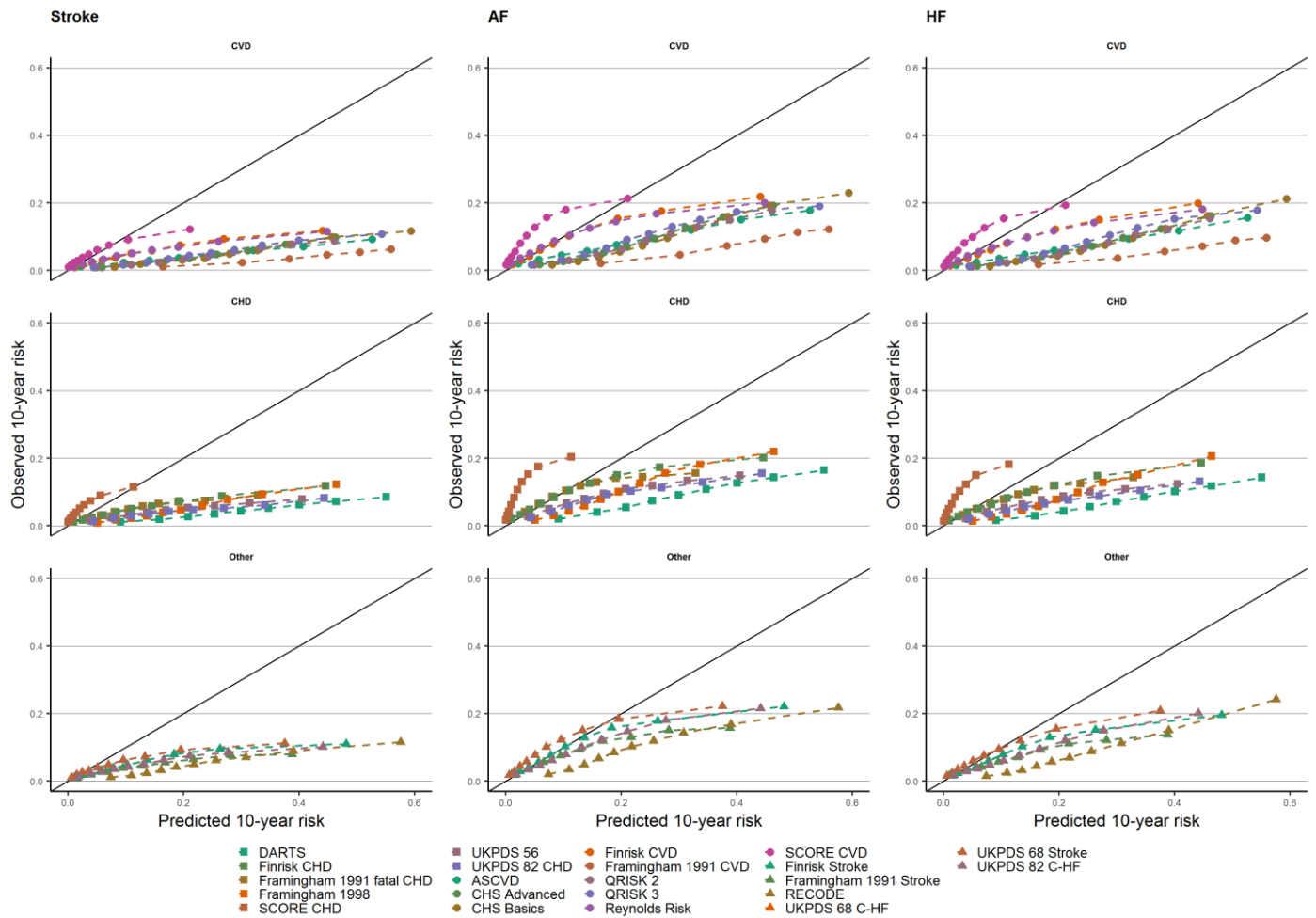
n.b. estimates based on complete-cases from UK sample of T2DM patients. The observed 10-years risk is (y-axes) plotted against the average predicted 10-year risk (x-axis) within groups defined by quintiles of predicted risk. The columns indicate the type of CVD the scores were evaluated against (Stroke, AF, HF). Scores were grouped by the derivation outcomes CVD, CHD, or other (including Stroke, C-HF)). The diagonal line reflects perfect calibration.

Appendix Figure 6: Calibration plots of CVD prediction rules applied in an UK sample of T2DM patients.



n.b. estimates based on imputed data. The observed 10-years risk is (y-axis) plotted against the average predicted 10-year risk (x-axis) within groups defined by quintiles of predicted risk. The columns indicate the type of CVD the scores were evaluated against (CVD, CHD, CVD + AF + HF). Scores were grouped by the derivation outcomes CVD, CHD, or other (including Stroke, C-HF). The diagonal line reflects perfect calibration.

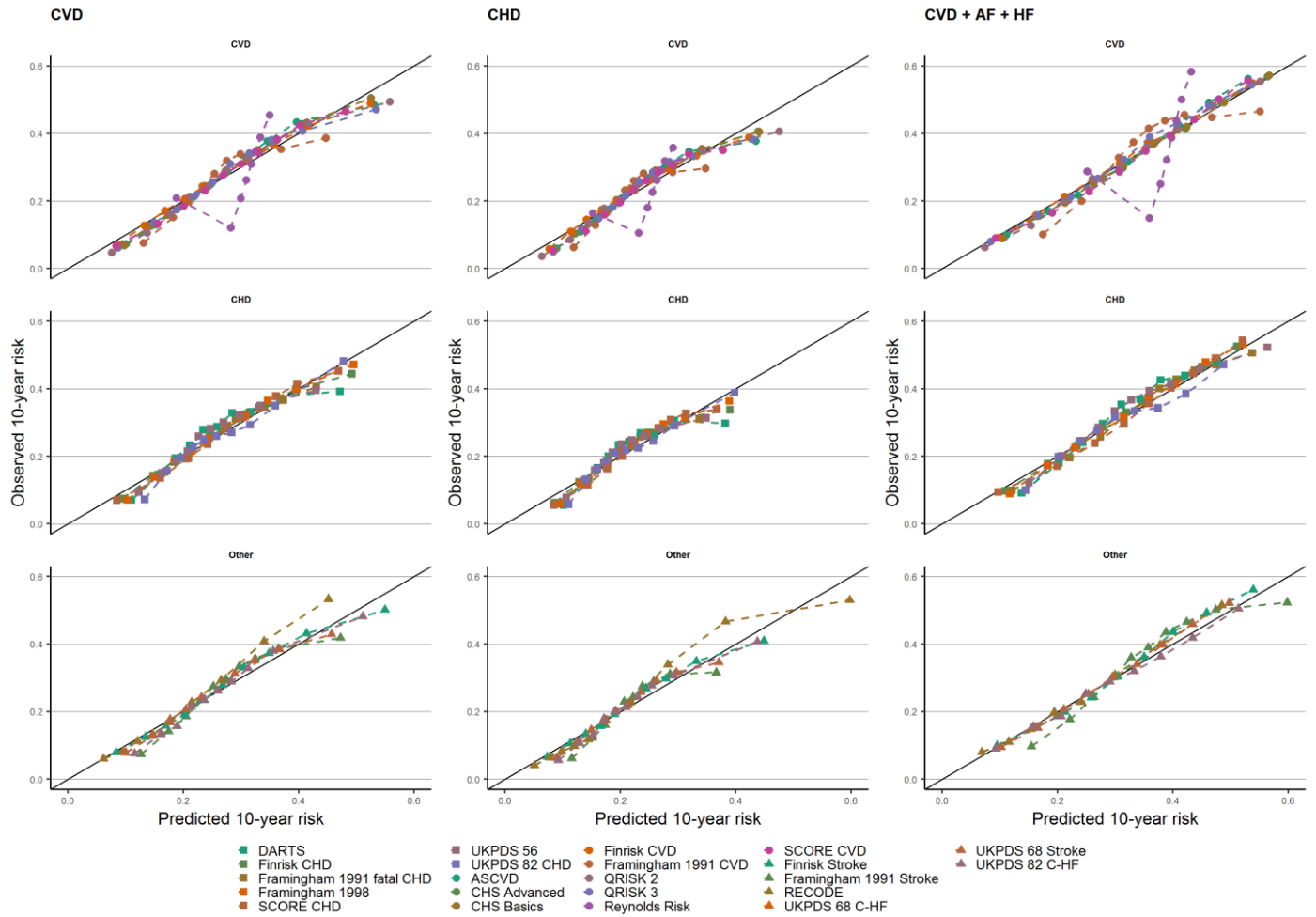
Appendix Figure 7: Calibration plots of CVD prediction rules applied in an UK sample of T2DM patients.



n.b. estimates based on imputed data. The observed 10-years risk is (y-axes) plotted against the average predicted 10-year risk (x-axis) within groups defined by quintiles of predicted risk. The columns indicate the type of CVD the scores were evaluated against (Stroke, AF, HF). Scores were grouped by the derivation outcomes CVD, CHD, or other (including Stroke, C-HF)). The diagonal line reflects perfect calibration.

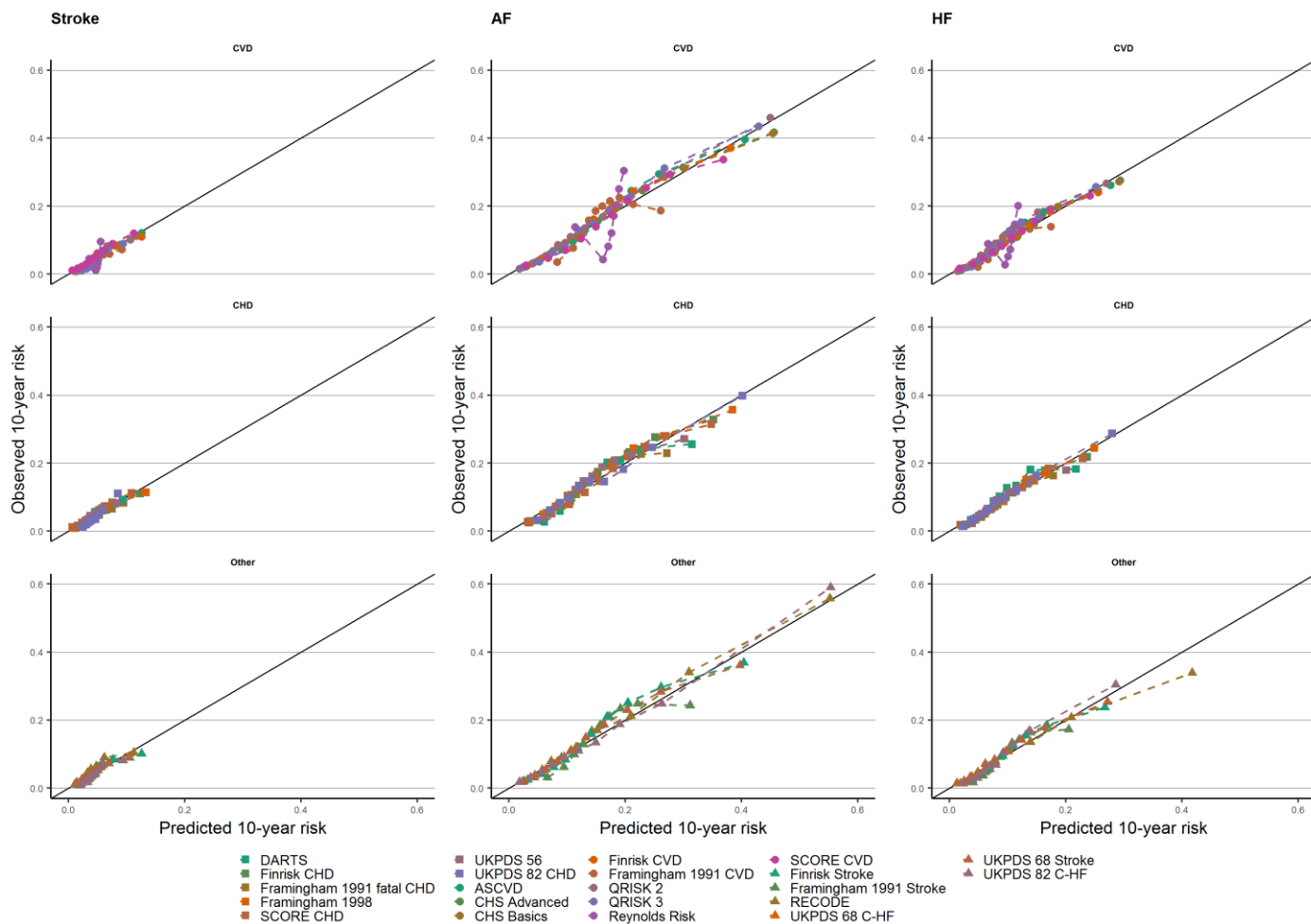
Performance after recalibration

Appendix Figure 8: Calibration plots after recalibration of the cardiovascular diseases based on a complete-case analysis.



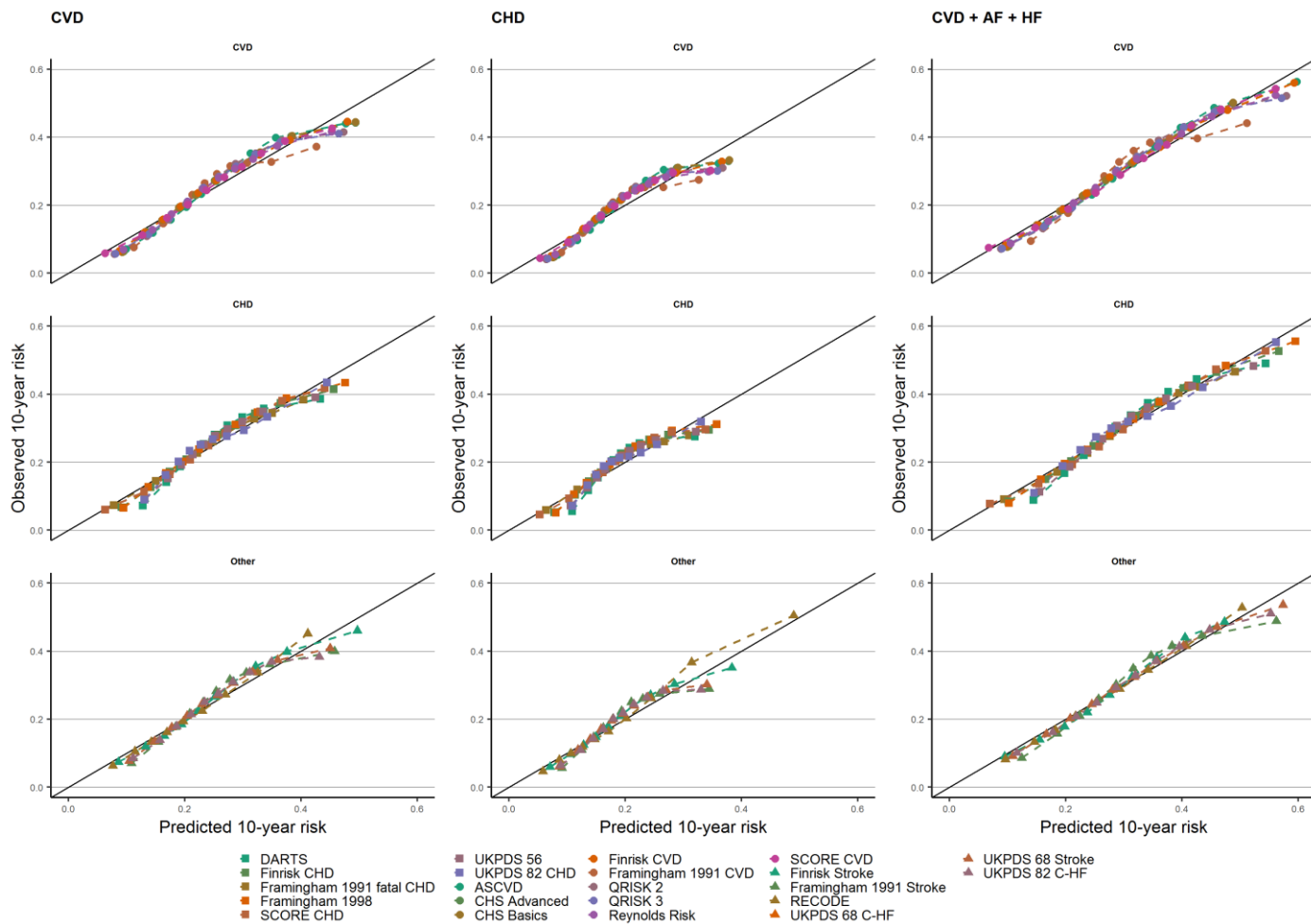
n.b. estimates based on complete-case analysis. The observed 10-years risk is (y-axes) plotted against the average predicted 10-year risk (x-axis) within groups defined by quintiles of predicted risk. The columns indicate the type of CVD the scores were evaluated against (CVD, CHD, CVD + AF + HF). Scores were grouped by the derivation outcomes CVD, CHD, or other (including Stroke, C-HF)). The diagonal line reflects perfect calibration.

Appendix Figure 9: Calibration plots after recalibration of the cardiovascular diseases based on a complete-case analysis.



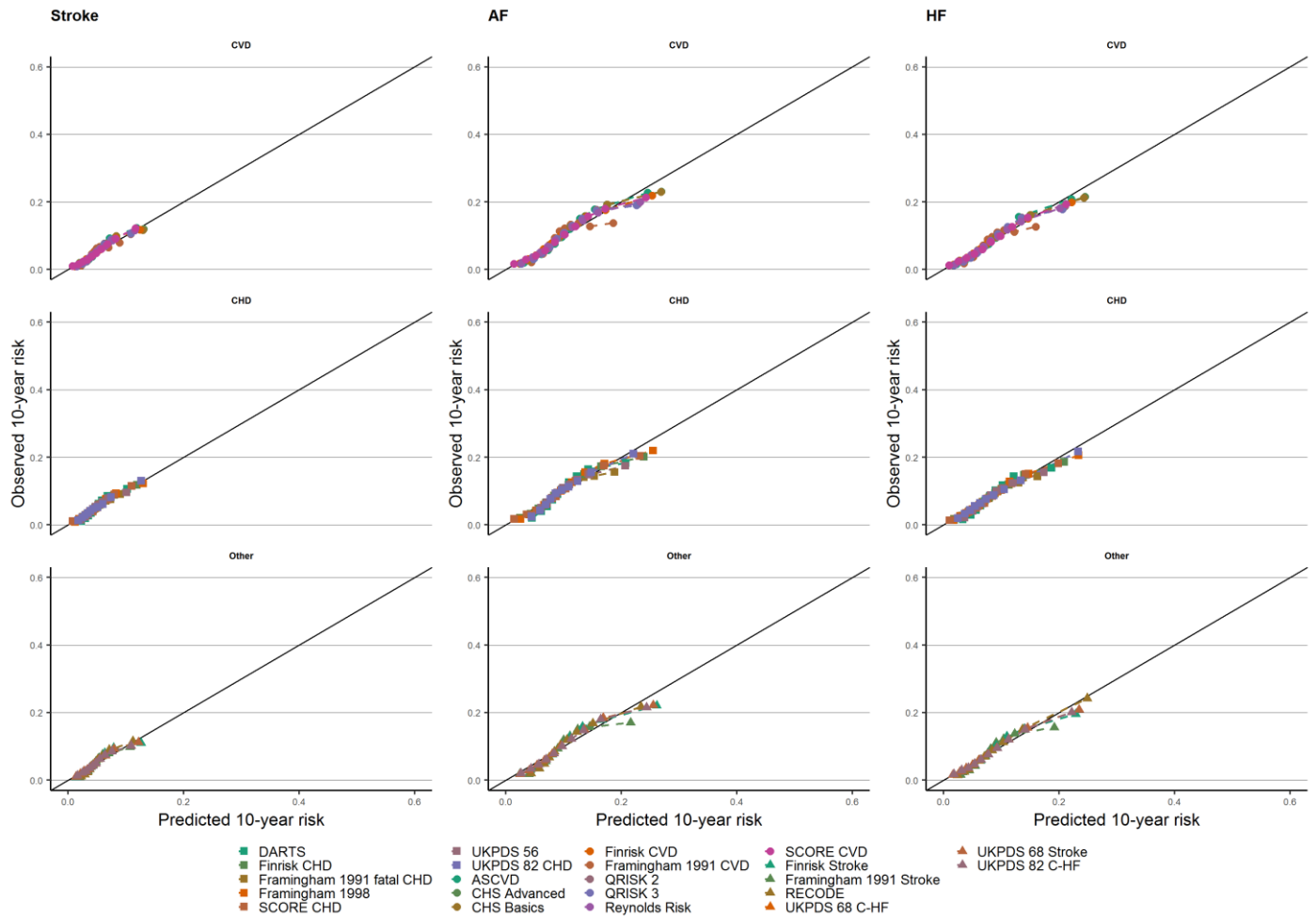
n.b. estimates based on complete-case analysis. The observed 10-years risk is (y-axes) plotted against the average predicted 10-year risk (x-axis) within groups defined by quintiles of predicted risk. The columns indicate the type of CVD the scores were evaluated against (Stroke, AF, HF). Scores were grouped by the derivation outcomes CVD, CHD, or other (including Stroke, C-HF)). The diagonal line reflects perfect calibration.

Appendix Figure 10: Calibration plots after recalibration of the CVD prediction rules calculated using the imputed datasets.



n.b. estimates based on imputed data. The observed 10-years risk is (y-axis) plotted against the average predicted 10-year risk (x-axis) within groups defined by quintiles of predicted risk. The columns indicate the type of CVD the scores were evaluated against (CVD, CHD, CVD + AF + HF). Scores were grouped by the derivation outcomes CVD, CHD, or other (including Stroke, C-HF). The diagonal line reflects perfect calibration.

Appendix Figure 11: Calibration plots after recalibration of the CVD prediction rules calculated using the imputed datasets.



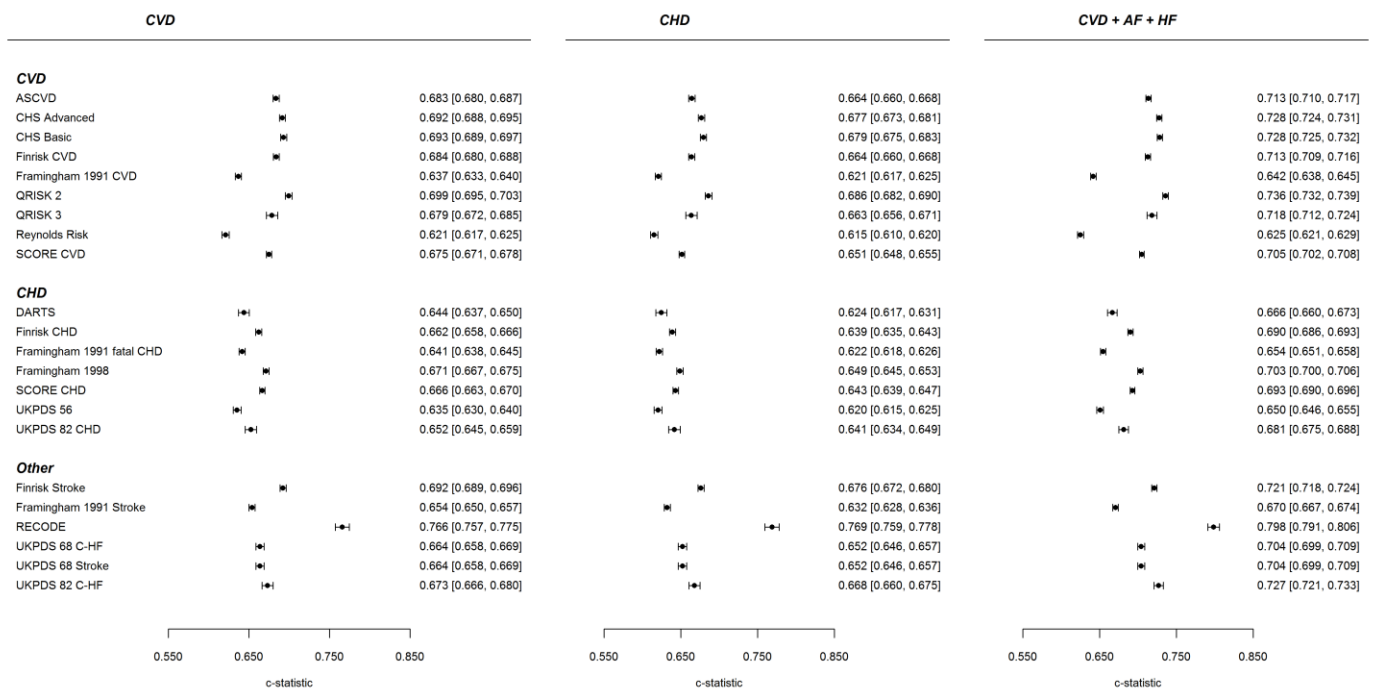
n.b. estimates based on imputed data. The observed 10-years risk is (y-axis) plotted against the average predicted 10-year risk (x-axis) within groups defined by quintiles of predicted risk. The columns indicate the type of CVD the scores were evaluated against (Stroke, AF, HF). Scores were grouped by the derivation outcomes CVD, CHD, or other (including Stroke, C-HF)). The diagonal line reflects perfect calibration.

Performance before recalibration based on a complete-case analysis.

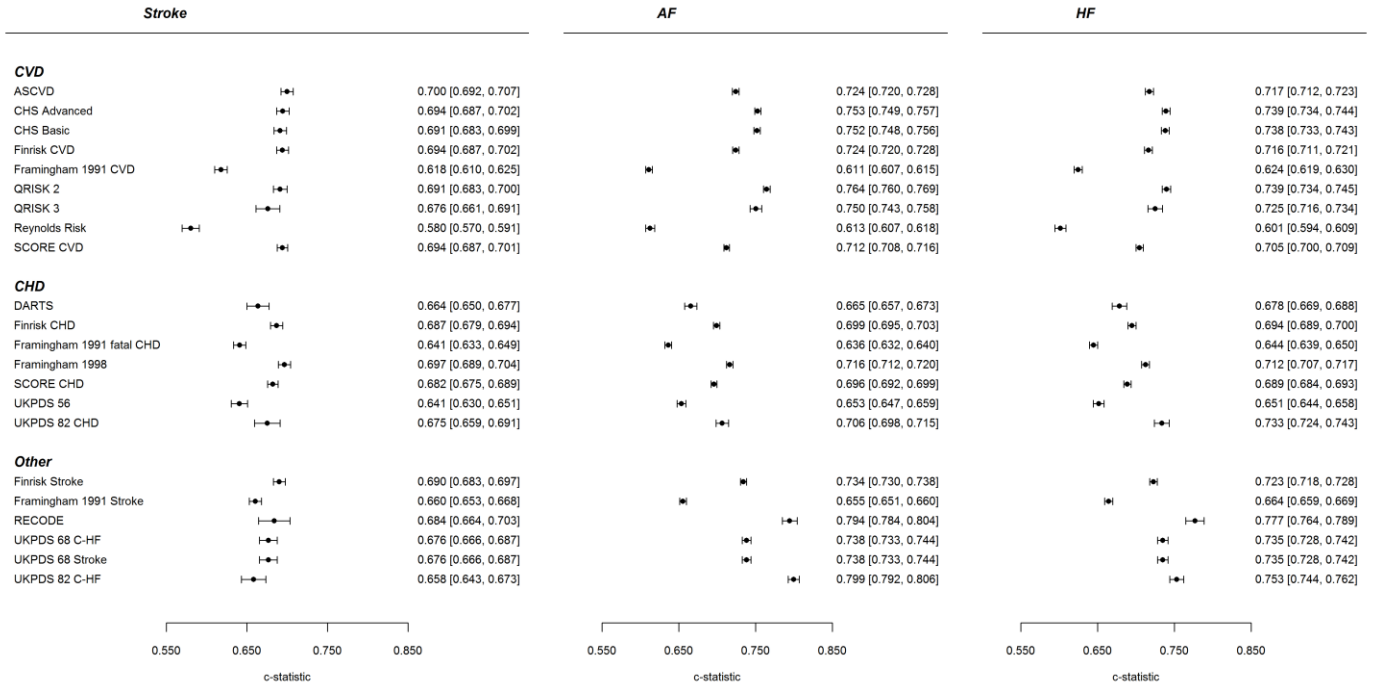
Discrimination

Most of the risk scores has a moderate discrimination in CALIBER dataset, the C-statistic ranged from 0.62 (*Reynolds Risk*) to 0.77 (*RECODE*) for CVD outcome; from 0.62 to 0.77 (*RECODE*) for CHD outcome; from 0.62 (*Reynolds Risk*) to 0.80 (*RECODE*) for CVD, AF and HF outcomes; from 0.58 (*Reynolds Risk*) to 0.70 (*Framingham 1998, ASCVD*) for Stroke outcome; from 0.61 to 0.80 (*UKPDS 82 C-HF*) for AF outcome; from 0.60 (*Reynolds Risk*) to 0.78 (*RECODE*) for HF outcome.

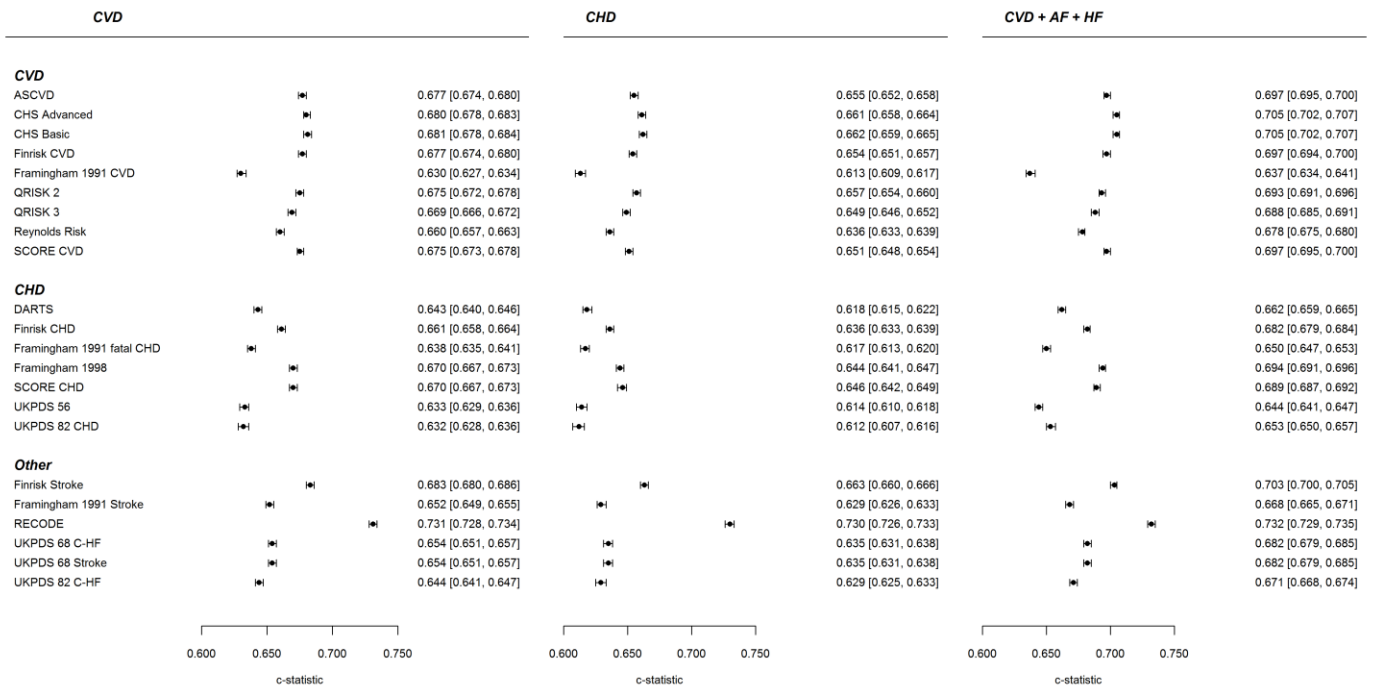
Appendix Figure 12: Forest plot presenting discrimination of the risk prediction models against CVD, CHD and CVD + AF + HF outcomes. The figure displays the C-statistic and 95% CI. The C-statistic was calculated based on a complete-case analysis.



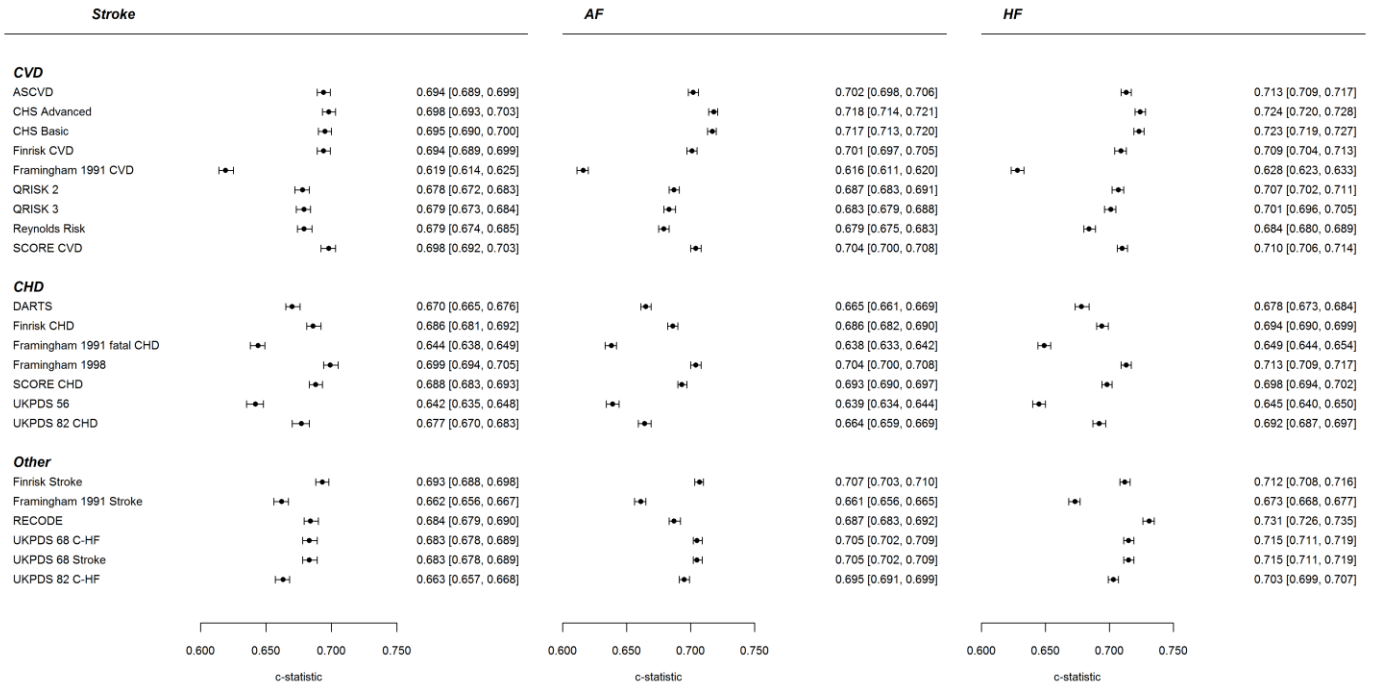
Appendix Figure 13: Forest plot presenting discrimination of the risk prediction models against Stroke, AF and HF outcomes. The figure displays the C-statistic and 95% CI. The C-statistic was calculated based on a complete-case analysis.



Appendix Figure 14: Forest plot presenting discrimination of the risk prediction models against CVD, CHD and CVD + AF + HF outcomes. The figure displays the C-statistic and 95% CI. The C-statistic was calculated accounting for missing data using multiple imputation.



Appendix Figure 15: Forest plot presenting discrimination of the risk prediction models against Stroke, AF and HF outcomes. The figure displays the C-statistic and 95% CI. The C-statistic was calculated accounting for missing data using multiple imputation.



Appendix Table 12: Calibration (calibration-in-the-large (CIL) and calibration slope (CS)) for all included risk score against CVD, CHD, CVD + AF + HF, Stroke, AF and HF outcomes based on a complete-case analysis.

	CVD		CHD		CVD + AF + HF		Stroke		AF		HF	
	CS	CIL	CS	CIL	CS	CIL	CS	CIL	CS	CIL	CS	CIL
ASCVD	0.471 (0.459;0.483)	-0.182 (-0.199;- 0.165)	0.399 (0.387;0.411)	-0.536 (-0.554;- 0.518)	0.599 (0.587;0.612)	0.318 (0.302;0.334)	0.424 (0.404;0.444)	-2.703 (-2.736;- 2.669)	0.573 (0.558;0.587)	-0.996 (-1.016;- 0.977)	0.515 (0.499;0.531)	-1.696 (-1.720;- 1.672)
CHS Advanced	0.772 (0.754;0.790)	-0.108 (-0.124;- 0.092)	0.697 (0.679;0.716)	-0.420 (-0.437;- 0.403)	0.974 (0.956;0.992)	0.329 (0.315;0.344)	0.740 (0.705;0.774)	-2.324 (-2.355;- 2.292)	1.054 (1.031;1.077)	-0.851 (-0.870;- 0.833)	0.960 (0.934;0.987)	-1.458 (-1.480;- 1.435)
CHS Basic	0.911 (0.890;0.932)	-0.177 (-0.192;- 0.161)	0.828 (0.806;0.850)	-0.478 (-0.494;- 0.461)	1.141 (1.119;1.162)	0.245 (0.230;0.259)	0.857 (0.816;0.897)	-2.336 (-2.367;- 2.305)	1.233 (1.206;1.260)	-0.896 (-0.914;- 0.878)	1.125 (1.094;1.156)	-1.487 (-1.509;- 1.464)
Finrisk CVD	0.613 (0.598;0.627)	0.933 (0.917;0.949)	0.536 (0.521;0.551)	0.610 (0.593;0.627)	0.734 (0.720;0.748)	1.394 (1.379;1.409)	0.632 (0.603;0.661)	-1.360 (-1.391;- 1.329)	0.763 (0.745;0.781)	0.155 (0.136;0.173)	0.726 (0.704;0.747)	-0.477 (-0.499;- 0.454)
Framingham 1991 CVD	0.576 (0.558;0.594)	-1.314 (-1.329;- 1.298)	0.499 (0.481;0.518)	-1.616 (-1.632;- 1.600)	0.598 (0.581;0.615)	-0.887 (-0.901;- 0.873)	0.488 (0.452;0.524)	-3.507 (-3.538;- 3.477)	0.447 (0.427;0.468)	-2.048 (-2.066;- 2.029)	0.506 (0.480;0.531)	-2.645 (-2.667;- 2.623)
QRISK 2	0.798 (0.777;0.818)	-0.228 (-0.246;- 0.211)	0.721 (0.700;0.742)	-0.522 (-0.541;- 0.504)	1.042 (1.021;1.064)	0.190 (0.174;0.206)	0.624 (0.588;0.660)	-2.506 (-2.541;- 2.470)	1.154 (1.126;1.181)	-0.997 (-1.017;- 0.976)	0.915 (0.887;0.944)	-1.591 (-1.616;- 1.566)
QRISK 3	0.723 (0.688;0.758)	-0.226 (-0.255;- 0.197)	0.642 (0.607;0.678)	-0.508 (-0.538;- 0.477)	0.959 (0.923;0.995)	0.198 (0.171;0.225)	0.582 (0.518;0.647)	-2.559 (-2.620;- 2.497)	1.084 (1.038;1.129)	-0.962 (-0.996;- 0.927)	0.869 (0.819;0.919)	-1.598 (-1.640;- 1.556)
Reynolds Risk	0.096 (0.091;0.101)	1.482 (1.464;1.501)	0.098 (0.093;0.104)	1.122 (1.103;1.141)	0.089 (0.084;0.093)	2.027 (2.009;2.046)	0.032 (0.022;0.043)	-1.030 (-1.065;- 0.995)	0.069 (0.063;0.075)	0.580 (0.559;0.601)	0.059 (0.051;0.066)	-0.077 (-0.102;- 0.052)
SCORE CVD	0.486 (0.475;0.497)	2.217 (2.203;2.232)	0.417 (0.405;0.428)	1.872 (1.856;1.887)	0.577 (0.566;0.588)	2.695 (2.681;2.709)	0.546 (0.522;0.569)	-0.106 (-0.133;- 0.078)	0.618 (0.604;0.633)	1.386 (1.369;1.403)	0.591 (0.573;0.608)	0.775 (0.755;0.795)
DARTS	0.578 (0.547;0.610)	-0.411 (-0.439;- 0.384)	0.491 (0.458;0.523)	-0.706 (-0.736;- 0.677)	0.694 (0.663;0.724)	0.005 (- 0.021;0.030)	0.585 (0.526;0.644)	-2.628 (-2.684;- 2.572)	0.628 (0.591;0.666)	-1.200 (-1.234;- 1.167)	0.657 (0.614;0.701)	-1.736 (-1.776;- 1.697)
Finrisk CHD	0.531 (0.517;0.546)	0.974 (0.958;0.989)	0.448 (0.433;0.462)	0.651 (0.635;0.668)	0.639 (0.625;0.653)	1.432 (1.417;1.447)	0.606 (0.577;0.635)	-1.317 (-1.349;- 1.286)	0.661 (0.643;0.679)	0.198 (0.179;0.216)	0.640 (0.619;0.661)	-0.433 (-0.456;- 0.411)
Framingham 1991	0.576	0.949	0.498	0.649	0.621	1.376	0.592	-1.222 (-1.252;-	0.565	0.222	0.606	-0.368 (-0.390;-

fatal CHD	(0.558;0.593)	(0.934;0.964)	(0.480;0.517)	(0.633;0.665)	(0.605;0.637)	(1.362;1.391)	(0.554;0.631)	1.191)	(0.543;0.586)	(0.204;0.240)	(0.579;0.634)	0.346)
Framingham 1998	0.845 (0.823;0.866)	0.366 (0.351;0.381)	0.717 (0.695;0.739)	0.072 (0.056;0.088)	1.039 (1.018;1.060)	0.781 (0.767;0.795)	0.949 (0.906;0.992)	-1.787 (-1.817;- 1.756)	1.079 (1.052;1.105)	-0.350 (-0.368;- 0.332)	1.048 (1.016;1.080)	-0.935 (-0.957;- 0.913)
SCORE CHD	0.490 (0.478;0.501)	2.847 (2.833;2.861)	0.420 (0.408;0.432)	2.510 (2.494;2.525)	0.569 (0.557;0.580)	3.313 (3.300;3.327)	0.546 (0.521;0.571)	0.570 (0.543;0.597)	0.600 (0.585;0.616)	2.035 (2.018;2.052)	0.576 (0.558;0.595)	1.436 (1.416;1.456)
UKPDS 56	0.469 (0.451;0.488)	0.205 (0.186;0.225)	0.408 (0.388;0.427)	-0.102 (-0.123;- 0.081)	0.541 (0.523;0.559)	0.657 (0.638;0.675)	0.436 (0.401;0.471)	-2.081 (-2.121;- 2.041)	0.511 (0.489;0.533)	-0.542 (-0.565;- 0.518)	0.494 (0.468;0.520)	-1.162 (-1.191;- 1.134)
UKPDS 82 CHD	0.504 (0.480;0.529)	0.035 (0.006;0.064)	0.454 (0.428;0.479)	-0.266 (-0.297;- 0.236)	0.653 (0.628;0.679)	0.498 (0.471;0.525)	0.458 (0.416;0.500)	-2.471 (-2.533;- 2.409)	0.665 (0.636;0.695)	-0.749 (-0.784;- 0.715)	0.713 (0.679;0.748)	-1.393 (-1.435;- 1.351)
Finrisk Stroke	0.583 (0.570;0.596)	0.924 (0.908;0.940)	0.522 (0.509;0.536)	0.590 (0.572;0.607)	0.704 (0.691;0.717)	1.399 (1.384;1.414)	0.536 (0.511;0.561)	-1.454 (-1.486;- 1.423)	0.712 (0.696;0.729)	0.117 (0.098;0.136)	0.658 (0.639;0.677)	-0.540 (-0.563;- 0.517)
Framingham 1991 Stroke	0.423 (0.411;0.435)	0.413 (0.397;0.429)	0.350 (0.337;0.362)	0.075 (0.058;0.092)	0.484 (0.472;0.496)	0.890 (0.875;0.905)	0.389 (0.368;0.411)	-2.051 (-2.084;- 2.018)	0.395 (0.381;0.409)	-0.410 (-0.429;- 0.390)	0.412 (0.396;0.429)	-1.081 (-1.104;- 1.057)
RECODE	1.068 (1.020;1.116)	-0.075 (-0.115;- 0.035)	1.031 (0.981;1.080)	-0.395 (-0.438;- 0.352)	1.426 (1.372;1.480)	0.418 (0.381;0.455)	0.513 (0.442;0.584)	-2.331 (-2.411;- 2.251)	1.183 (1.128;1.238)	-0.750 (-0.797;- 0.704)	0.983 (0.925;1.041)	-1.401 (-1.457;- 1.344)
UKPDS 68 C-HF	0.490 (0.473;0.508)	1.371 (1.350;1.393)	0.450 (0.431;0.468)	1.062 (1.038;1.085)	0.642 (0.624;0.659)	1.836 (1.815;1.857)	0.503 (0.467;0.540)	-1.004 (-1.048;- 0.959)	0.749 (0.725;0.773)	0.563 (0.537;0.589)	0.731 (0.703;0.759)	-0.048 (-0.080;- 0.017)
UKPDS 68 Stroke	0.490 (0.473;0.508)	1.371 (1.350;1.393)	0.450 (0.431;0.468)	1.062 (1.038;1.085)	0.642 (0.624;0.659)	1.836 (1.815;1.857)	0.503 (0.467;0.540)	-1.004 (-1.048;- 0.959)	0.749 (0.725;0.773)	0.563 (0.537;0.589)	0.731 (0.703;0.759)	-0.048 (-0.080;- 0.017)
UKPDS 82 C-HF	0.480 (0.458;0.502)	0.523 (0.494;0.552)	0.451 (0.429;0.474)	0.211 (0.180;0.242)	0.783 (0.757;0.809)	1.001 (0.973;1.028)	0.347 (0.310;0.385)	-2.131 (-2.195;- 2.066)	1.045 (1.011;1.079)	-0.294 (-0.329;- 0.258)	0.644 (0.615;0.674)	-0.976 (-1.019;- 0.932)

Appendix Table 13: Calibration after performing recalibration (calibration-in-the-large (CIL) and calibration slope (CS)) for all included risk score against CVD, CHD, CVD + AF + HF, Stroke, AF and HF outcomes based on a complete-case analysis.

	CVD		CHD		CVD + AF + HF		Stroke		AF		HF	
	CS	CIL	CS	CIL	CS	CIL	CS	CIL	CS	CIL	CS	CIL
ASCVD	0.988 (0.963;1.014)	-0.007 (- 0.022;0.008)	0.951 (0.922;0.980)	-0.016 (-0.033;- 0.000)	1.007 (0.986;1.028)	-0.004 (- 0.019;0.011)	0.987 (0.940;1.033)	-0.067 (-0.098;- 0.036)	0.998 (0.972;1.023)	0.023 (0.005;0.042)	0.942 (0.912;0.971)	-0.014 (- 0.036;0.009)
CHS Advanced	1.068 (1.043;1.092)	-0.006 (- 0.022;0.009)	1.052 (1.024;1.080)	-0.028 (-0.044;- 0.012)	1.032 (1.013;1.052)	-0.035 (-0.050;- 0.020)	1.031 (0.983;1.079)	0.008 (- 0.023;0.039)	1.000 (0.978;1.022)	-0.033 (-0.052;- 0.014)	1.060 (1.031;1.089)	-0.079 (-0.102;- 0.057)
CHS Basic	1.064 (1.040;1.089)	-0.006 (- 0.022;0.009)	1.050 (1.022;1.078)	-0.028 (-0.044;- 0.012)	1.029 (1.010;1.048)	-0.035 (-0.050;- 0.020)	1.030 (0.981;1.079)	0.007 (- 0.024;0.038)	0.996 (0.974;1.017)	-0.033 (-0.052;- 0.014)	1.056 (1.027;1.085)	-0.079 (-0.102;- 0.057)
Finrisk CVD	0.974 (0.951;0.997)	-0.004 (- 0.019;0.011)	0.971 (0.944;0.998)	0.003 (- 0.013;0.019)	1.001 (0.981;1.020)	0.014 (0.000;0.029)	0.944 (0.901;0.988)	-0.020 (- 0.051;0.011)	1.024 (0.999;1.048)	0.042 (0.024;0.060)	1.054 (1.022;1.085)	-0.033 (-0.055;- 0.011)
Framingham 1991 CVD	1.072 (1.038;1.105)	-0.015 (-0.029;- 0.000)	1.138 (1.096;1.181)	-0.004 (- 0.019;0.012)	1.064 (1.034;1.094)	-0.008 (- 0.022;0.005)	1.037 (0.961;1.114)	-0.081 (-0.112;- 0.051)	1.030 (0.982;1.078)	0.005 (- 0.012;0.023)	1.117 (1.061;1.174)	-0.014 (- 0.036;0.007)
QRISK 2	0.976 (0.951;1.001)	-0.039 (-0.056;- 0.023)	0.939 (0.912;0.966)	-0.041 (-0.058;- 0.023)	1.002 (0.981;1.023)	-0.022 (-0.039;- 0.006)	1.011 (0.952;1.069)	-0.023 (- 0.057;0.012)	1.009 (0.986;1.033)	0.045 (0.024;0.066)	0.965 (0.934;0.995)	0.078 (0.053;0.103)
QRISK 3	0.938 (0.893;0.983)	-0.014 (- 0.042;0.014)	0.995 (0.940;1.050)	-0.007 (- 0.036;0.023)	0.965 (0.929;1.002)	0.022 (- 0.005;0.050)	1.264 (1.123;1.404)	-0.152 (-0.211;- 0.092)	1.015 (0.972;1.058)	0.054 (0.020;0.089)	1.017 (0.958;1.075)	0.035 (- 0.007;0.077)
Reynolds Risk	0.968 (0.918;1.019)	-0.032 (-0.048;- 0.017)	1.007 (0.952;1.063)	-0.033 (-0.050;- 0.016)	0.924 (0.876;0.972)	-0.015 (-0.030;- 0.000)	0.599 (0.407;0.791)	-0.030 (- 0.063;0.004)	0.893 (0.814;0.972)	-0.007 (- 0.026;0.012)	0.788 (0.688;0.887)	0.052 (0.029;0.075)
SCORE CVD	1.091 (1.066;1.116)	-0.001 (- 0.015;0.012)	1.150 (1.118;1.181)	-0.010 (- 0.024;0.004)	1.069 (1.049;1.089)	-0.016 (-0.029;- 0.004)	0.963 (0.921;1.004)	0.102 (0.075;0.128)	1.074 (1.049;1.100)	-0.050 (-0.066;- 0.034)	1.062 (1.030;1.093)	-0.020 (-0.040;- 0.001)
DARTS	0.913 (0.863;0.962)	0.024 (- 0.002;0.051)	0.905 (0.845;0.965)	0.002 (- 0.026;0.030)	0.951 (0.908;0.993)	0.000 (- 0.025;0.025)	1.069 (0.962;1.176)	0.030 (- 0.025;0.085)	1.008 (0.948;1.068)	-0.046 (-0.078;- 0.013)	0.937 (0.874;0.999)	0.063 (0.025;0.102)
Finrisk CHD	0.967 (0.941;0.993)	-0.004 (- 0.019;0.011)	0.959 (0.928;0.990)	0.003 (- 0.013;0.018)	1.001 (0.979;1.023)	0.014 (- 0.000;0.028)	0.937 (0.892;0.982)	-0.021 (- 0.052;0.009)	1.012 (0.985;1.039)	0.040 (0.022;0.058)	1.044 (1.009;1.078)	-0.034 (-0.055;- 0.012)
Framingham 1991 fatal CHD	1.050 (1.018;1.082)	-0.014 (- 0.029;0.000)	1.099 (1.059;1.139)	-0.004 (- 0.019;0.012)	1.058 (1.030;1.086)	-0.008 (- 0.022;0.006)	1.026 (0.959;1.093)	-0.081 (-0.112;- 0.051)	1.039 (0.999;1.078)	0.006 (- 0.012;0.023)	1.106 (1.056;1.155)	-0.014 (- 0.036;0.007)

Framingham 1998	1.034 (1.007;1.060)	-0.005 (- 0.020;0.010)	1.048 (1.016;1.081)	0.005 (- 0.011;0.021)	1.051 (1.030;1.073)	0.003 (- 0.011;0.018)	0.942 (0.899;0.985)	-0.069 (-0.099;- 0.038)	0.990 (0.966;1.015)	0.020 (0.002;0.038)	1.046 (1.014;1.078)	-0.001 (- 0.023;0.021)
SCORE CHD	1.085 (1.059;1.111)	-0.002 (- 0.016;0.011)	1.151 (1.118;1.185)	-0.011 (- 0.025;0.003)	1.061 (1.040;1.082)	-0.018 (-0.031;- 0.005)	0.927 (0.884;0.970)	0.100 (0.073;0.127)	1.070 (1.043;1.097)	-0.052 (-0.068;- 0.036)	1.040 (1.007;1.073)	-0.022 (-0.041;- 0.003)
UKPDS 56	1.001 (0.961;1.040)	0.040 (0.022;0.059)	0.976 (0.929;1.023)	0.034 (0.015;0.054)	0.967 (0.935;0.999)	0.037 (0.020;0.054)	1.078 (0.990;1.165)	0.022 (- 0.017;0.060)	0.970 (0.928;1.012)	0.036 (0.013;0.058)	0.980 (0.929;1.032)	-0.011 (- 0.039;0.016)
UKPDS 82 CHD	1.111 (1.057;1.166)	-0.050 (-0.077;- 0.024)	1.073 (1.013;1.133)	-0.031 (-0.060;- 0.003)	1.079 (1.038;1.121)	-0.038 (-0.063;- 0.012)	1.451 (1.318;1.584)	-0.118 (-0.176;- 0.060)	1.005 (0.961;1.050)	-0.042 (-0.075;- 0.009)	1.034 (0.984;1.083)	0.010 (- 0.030;0.050)
Finrisk Stroke	0.975 (0.953;0.998)	-0.003 (- 0.018;0.012)	0.977 (0.951;1.003)	0.004 (- 0.012;0.020)	0.996 (0.977;1.015)	0.015 (0.001;0.029)	0.949 (0.904;0.994)	-0.020 (- 0.051;0.010)	1.026 (1.003;1.050)	0.042 (0.024;0.060)	1.054 (1.024;1.085)	-0.033 (-0.055;- 0.011)
Framingham 1991 Stroke	1.073 (1.042;1.104)	-0.011 (- 0.026;0.004)	1.101 (1.062;1.140)	-0.001 (- 0.016;0.015)	1.061 (1.035;1.087)	-0.004 (- 0.018;0.009)	1.060 (1.001;1.119)	-0.076 (-0.106;- 0.045)	0.995 (0.960;1.030)	0.010 (- 0.008;0.028)	1.078 (1.035;1.120)	-0.010 (- 0.031;0.012)
RECODE	0.974 (0.930;1.018)	0.063 (0.023;0.104)	0.972 (0.926;1.019)	-0.001 (- 0.045;0.042)	1.047 (1.007;1.086)	0.079 (0.040;0.118)	0.786 (0.677;0.894)	0.171 (0.093;0.249)	0.968 (0.923;1.013)	0.041 (- 0.007;0.090)	0.859 (0.808;0.910)	-0.145 (-0.203;- 0.087)
UKPDS 68 C-HF	1.052 (1.014;1.090)	0.009 (- 0.011;0.030)	1.093 (1.048;1.138)	0.010 (- 0.011;0.032)	1.042 (1.013;1.071)	0.021 (0.002;0.040)	0.955 (0.885;1.024)	-0.012 (- 0.055;0.031)	0.966 (0.935;0.996)	0.028 (0.002;0.053)	0.939 (0.903;0.975)	0.040 (0.009;0.070)
UKPDS 68 Stroke	1.052 (1.014;1.090)	0.009 (- 0.011;0.030)	1.093 (1.048;1.138)	0.010 (- 0.011;0.032)	1.042 (1.013;1.071)	0.021 (0.002;0.040)	0.955 (0.885;1.024)	-0.012 (- 0.055;0.031)	0.966 (0.935;0.996)	0.028 (0.002;0.053)	0.939 (0.903;0.975)	0.040 (0.009;0.070)
UKPDS 82 C-HF	1.048 (0.999;1.096)	-0.045 (-0.072;- 0.018)	1.017 (0.966;1.068)	-0.026 (- 0.054;0.003)	1.048 (1.013;1.082)	-0.027 (-0.053;- 0.001)	1.090 (0.972;1.207)	-0.120 (-0.178;- 0.062)	1.089 (1.054;1.124)	-0.025 (- 0.060;0.011)	1.066 (1.017;1.115)	0.015 (- 0.025;0.056)

Appendix Table 14 Calibration (calibration-in-the-large (CIL) and calibration slope (CS)) for all included risk score against CVD, CHD, CVD + AF + HF, Stroke, AF and HF outcomes based on imputed dataset.

Risk Score Name	CVD		CHD		CVD + AF + HF		Stroke		AF		HF	
	CS	CIL	CS	CIL	CS	CIL	CS	CIL	CS	CIL	CS	CIL
ASCVD	0.411 (0.402;0.419)	-0.153 (-0.167;- 0.139)	0.338 (0.33;0.347)	-0.573 (-0.588;- 0.558)	0.489 (0.48;0.497)	0.213 (0.199;0.227)	0.378 (0.364;0.391)	-2.49 (-2.514;- 2.466)	0.425 (0.413;0.436)	-1.587 (-1.605;- 1.569)	0.448 (0.436;0.46)	-1.846 (-1.866;- 1.827)
CHS Advanced	0.677 (0.664;0.689)	-0.087 (-0.099;- 0.075)	0.586 (0.574;0.599)	-0.457 (-0.47;- 0.444)	0.799 (0.787;0.811)	0.237 (0.226;0.248)	0.707 (0.685;0.729)	-2.131 (-2.153;- 2.11)	0.797 (0.779;0.814)	-1.349 (-1.366;- 1.333)	0.833 (0.814;0.852)	-1.575 (-1.593;- 1.558)
CHS Basic	0.8 (0.786;0.815)	-0.165 (-0.176;- 0.153)	0.699 (0.684;0.714)	-0.522 (-0.534;- 0.509)	0.94 (0.926;0.954)	0.146 (0.135;0.158)	0.828 (0.801;0.854)	-2.15 (-2.172;- 2.129)	0.94 (0.919;0.96)	-1.386 (-1.402;- 1.37)	0.982 (0.959;1.004)	-1.606 (-1.624;- 1.589)
Finrisk CVD	0.543 (0.532;0.553)	0.913 (0.899;0.927)	0.461 (0.45;0.471)	0.521 (0.506;0.535)	0.619 (0.609;0.629)	1.258 (1.245;1.271)	0.584 (0.565;0.604)	-1.215 (-1.238;- 1.192)	0.61 (0.595;0.625)	-0.411 (-0.429;- 0.393)	0.641 (0.624;0.658)	-0.644 (-0.663;- 0.625)
Framingham 1991 CVD	0.514 (0.499;0.529)	-1.379 (-1.394;- 1.364)	0.441 (0.426;0.456)	-1.743 (-1.759;- 1.727)	0.543 (0.529;0.557)	-1.061 (-1.075;- 1.046)	0.463 (0.438;0.487)	-3.393 (-3.416;- 3.369)	0.445 (0.425;0.465)	-2.621 (-2.64;- 2.601)	0.492 (0.469;0.514)	-2.844 (-2.864;- 2.823)
QRISK 2	0.666 (0.652;0.681)	-0.174 (-0.187;- 0.161)	0.579 (0.563;0.596)	-0.538 (-0.551;- 0.524)	0.757 (0.744;0.771)	0.144 (0.131;0.157)	0.595 (0.562;0.629)	-2.196 (-2.218;- 2.174)	0.665 (0.642;0.688)	-1.418 (-1.435;- 1.4)	0.742 (0.713;0.77)	-1.642 (-1.66;- 1.623)
QRISK 3	0.682 (0.667;0.698)	0.04 (0.028;0.053)	0.582 (0.565;0.6)	-0.319 (-0.332;- 0.305)	0.777 (0.763;0.792)	0.354 (0.341;0.366)	0.637 (0.6;0.673)	-1.961 (-1.983;- 1.939)	0.689 (0.664;0.713)	-1.189 (-1.206;- 1.172)	0.755 (0.725;0.785)	-1.411 (-1.429;- 1.393)
Reynolds Risk	0.466 (0.455;0.476)	0.917 (0.902;0.932)	0.386 (0.375;0.397)	0.524 (0.509;0.54)	0.53 (0.52;0.539)	1.262 (1.248;1.276)	0.505 (0.487;0.524)	-1.233 (-1.256;- 1.209)	0.507 (0.492;0.521)	-0.415 (-0.433;- 0.396)	0.526 (0.51;0.542)	-0.651 (-0.671;- 0.631)
SCORE CVD	0.434 (0.426;0.443)	2.147 (2.133;2.16)	0.369 (0.361;0.378)	1.74 (1.726;1.755)	0.492 (0.484;0.5)	2.509 (2.496;2.522)	0.503 (0.485;0.52)	-0.034 (-0.057;- 0.011)	0.523 (0.51;0.535)	0.784 (0.767;0.802)	0.545 (0.531;0.559)	0.546 (0.528;0.565)
DARTS	0.495 (0.481;0.509)	-0.532 (-0.546;- 0.518)	0.389 (0.373;0.405)	-0.902 (-0.916;- 0.887)	0.588 (0.574;0.602)	-0.211 (-0.224;- 0.197)	0.488 (0.451;0.526)	-2.606 (-2.631;- 2.582)	0.505 (0.482;0.529)	-1.803 (-1.822;- 1.785)	0.541 (0.509;0.573)	-2.034 (-2.054;- 2.014)
Finrisk CHD	0.476 (0.466;0.486)	0.913 (0.898;0.928)	0.394 (0.383;0.404)	0.52 (0.504;0.535)	0.547 (0.537;0.557)	1.259 (1.244;1.273)	0.545 (0.526;0.564)	-1.225 (-1.248;- 1.201)	0.543 (0.529;0.557)	-0.416 (-0.435;- 0.397)	0.573 (0.556;0.589)	-0.651 (-0.67;- 0.631)
Framingham 1991	0.498	0.893	0.426	0.531	0.538	1.212	0.54	-1.1 (-1.123;-	0.519	-0.337 (-0.355;-	0.562	-0.557 (-0.577;-

fatal CHD	(0.485;0.511)	(0.877;0.909)	(0.412;0.439)	(0.515;0.547)	(0.526;0.55)	(1.197;1.227)	(0.513;0.567)	1.076)	(0.499;0.539)	0.318)	(0.539;0.585)	0.537)
Framingham 1998	0.773 (0.758;0.788)	0.319 (0.306;0.331)	0.638 (0.622;0.654)	-0.035 (-0.048;- 0.022)	0.909 (0.894;0.924)	0.628 (0.616;0.639)	0.889 (0.86;0.917)	-1.655 (-1.677;- 1.633)	0.912 (0.89;0.934)	-0.894 (-0.91;- 0.878)	0.968 (0.945;0.992)	-1.113 (-1.131;- 1.095)
SCORE CHD	0.444 (0.435;0.452)	2.763 (2.749;2.776)	0.38 (0.37;0.389)	2.366 (2.352;2.381)	0.496 (0.487;0.504)	3.115 (3.102;3.129)	0.508 (0.489;0.526)	0.63 (0.607;0.653)	0.526 (0.512;0.54)	1.432 (1.415;1.45)	0.544 (0.529;0.56)	1.199 (1.181;1.218)
UKPDS 56	0.433 (0.421;0.444)	0.146 (0.129;0.163)	0.36 (0.348;0.372)	-0.235 (-0.253;- 0.218)	0.483 (0.471;0.494)	0.478 (0.463;0.494)	0.422 (0.401;0.442)	-1.975 (-2.002;- 1.948)	0.426 (0.409;0.443)	-1.159 (-1.18;- 1.138)	0.443 (0.425;0.462)	-1.395 (-1.417;- 1.372)
UKPDS 82 CHD	0.425 (0.412;0.438)	0.041 (0.028;0.054)	0.349 (0.335;0.362)	-0.349 (-0.363;- 0.334)	0.515 (0.502;0.528)	0.379 (0.367;0.392)	0.492 (0.474;0.509)	-2.136 (-2.16;- 2.113)	0.461 (0.446;0.475)	-1.296 (-1.314;- 1.278)	0.578 (0.562;0.593)	-1.538 (-1.557;- 1.519)
Finrisk Stroke	0.522 (0.513;0.532)	0.944 (0.931;0.957)	0.452 (0.442;0.462)	0.541 (0.527;0.555)	0.596 (0.587;0.605)	1.297 (1.284;1.309)	0.517 (0.5;0.535)	-1.253 (-1.275;- 1.23)	0.568 (0.555;0.582)	-0.422 (-0.439;- 0.404)	0.589 (0.575;0.604)	-0.663 (-0.682;- 0.644)
Framingham 1991 Stroke	0.383 (0.372;0.394)	0.364 (0.347;0.38)	0.312 (0.302;0.323)	-0.049 (-0.067;- 0.031)	0.436 (0.425;0.446)	0.724 (0.708;0.739)	0.355 (0.339;0.371)	-1.932 (-1.961;- 1.903)	0.363 (0.351;0.376)	-1.049 (-1.071;- 1.027)	0.39 (0.376;0.404)	-1.303 (-1.327;- 1.279)
RECODE	1.052 (1.034;1.07)	0.078 (0.066;0.09)	1.001 (0.983;1.02)	-0.284 (-0.297;- 0.271)	1.098 (1.081;1.115)	0.392 (0.381;0.403)	0.6 (0.574;0.625)	-1.956 (-1.978;- 1.933)	0.672 (0.651;0.692)	-1.169 (-1.185;- 1.152)	0.875 (0.852;0.899)	-1.395 (-1.413;- 1.377)
UKPDS 68 C-HF	0.424 (0.412;0.435)	1.371 (1.351;1.391)	0.361 (0.35;0.372)	0.967 (0.945;0.989)	0.516 (0.504;0.529)	1.726 (1.707;1.744)	0.486 (0.468;0.504)	-0.824 (-0.859;- 0.789)	0.559 (0.542;0.576)	0.006 (- 0.022;0.034)	0.592 (0.575;0.61)	-0.235 (-0.264;- 0.205)
UKPDS 68 Stroke	0.424 (0.412;0.435)	1.371 (1.351;1.391)	0.361 (0.35;0.372)	0.967 (0.945;0.989)	0.516 (0.504;0.529)	1.726 (1.707;1.744)	0.486 (0.468;0.504)	-0.824 (-0.859;- 0.789)	0.559 (0.542;0.576)	0.006 (- 0.022;0.034)	0.592 (0.575;0.61)	-0.235 (-0.264;- 0.205)
UKPDS 82 C-HF	0.479 (0.458;0.499)	0.745 (0.723;0.767)	0.421 (0.401;0.441)	0.368 (0.344;0.392)	0.586 (0.564;0.608)	1.075 (1.054;1.095)	0.516 (0.487;0.544)	-1.33 (-1.37;- 1.291)	0.643 (0.612;0.675)	-0.537 (-0.569;- 0.506)	0.68 (0.645;0.714)	-0.766 (-0.799;- 0.733)

Appendix Table 15 Calibration after performing recalibration (calibration-in-the-large (CIL) and calibration slope (CS)) for all included risk score against CVD, CHD, CVD + AF + HF, Stroke, AF and HF outcomes accounting for missing data using multiple imputation.

	CVD		CHD		CVD + AF + HF		Stroke		AF		HF	
	CS	CIL	CS	CIL	CS	CIL	CS	CIL	CS	CIL	CS	CIL
ASCVD	1.012 (0.987;1.036)	0.006 (- 0.005;0.017)	0.985 (0.958;1.012)	0.028 (0.016;0.04)	0.99 (0.967;1.013)	-0.013 (-0.023;- 0.002)	1.003 (0.929;1.077)	0.021 (0;0.043)	0.979 (0.939;1.02)	-0.034 (-0.05;- 0.018)	0.955 (0.91;0.999)	-0.034 (-0.051;- 0.016)
CHS Advanced	1.006 (0.988;1.024)	0.006 (- 0.005;0.017)	0.993 (0.971;1.015)	0.028 (0.016;0.04)	0.991 (0.976;1.006)	-0.013 (-0.023;- 0.002)	0.99 (0.958;1.022)	0.021 (0;0.042)	1.002 (0.979;1.024)	-0.034 (-0.05;- 0.019)	0.958 (0.936;0.981)	-0.034 (-0.051;- 0.017)
CHS Basic	1.006 (0.987;1.024)	0.006 (- 0.005;0.017)	0.993 (0.971;1.015)	0.028 (0.016;0.04)	0.991 (0.976;1.007)	-0.013 (-0.024;- 0.002)	0.987 (0.955;1.02)	0.021 (0;0.042)	0.999 (0.976;1.022)	-0.034 (-0.05;- 0.019)	0.961 (0.936;0.985)	-0.034 (-0.052;- 0.017)
Finrisk CVD	1.014 (0.991;1.038)	0.008 (- 0.003;0.019)	0.981 (0.953;1.009)	0.03 (0.018;0.042)	1 (0.979;1.021)	-0.011 (-0.022;0)	1.022 (0.981;1.063)	0.024 (0.003;0.045)	0.983 (0.956;1.011)	-0.031 (-0.047;- 0.015)	0.986 (0.954;1.017)	-0.03 (-0.048;- 0.013)
Framingham 1991 CVD	0.985 (0.945;1.025)	0.007 (- 0.004;0.019)	0.942 (0.9;0.984)	0.029 (0.017;0.041)	0.988 (0.952;1.023)	-0.011 (-0.022;0)	1.099 (1.017;1.18)	0.022 (0.001;0.043)	0.952 (0.895;1.01)	-0.031 (-0.047;- 0.015)	1.014 (0.945;1.084)	-0.031 (-0.048;- 0.014)
QRISK 2	0.988 (0.952;1.025)	0.01 (- 0.002;0.021)	0.95 (0.903;0.997)	0.032 (0.019;0.044)	0.988 (0.958;1.017)	-0.009 (- 0.02;0.002)	1.031 (0.943;1.118)	0.025 (0.004;0.047)	0.984 (0.927;1.041)	-0.028 (-0.045;- 0.012)	0.969 (0.891;1.046)	-0.027 (-0.045;- 0.009)
QRISK 3	0.983 (0.944;1.022)	0.008 (- 0.004;0.019)	0.939 (0.887;0.991)	0.029 (0.017;0.042)	0.981 (0.948;1.014)	-0.011 (-0.022;0)	1.022 (0.925;1.119)	0.023 (0.001;0.044)	0.974 (0.906;1.042)	-0.031 (-0.048;- 0.015)	0.953 (0.868;1.039)	-0.031 (-0.049;- 0.012)
Reynolds Risk	1.014 (0.981;1.047)	0.008 (- 0.003;0.02)	0.973 (0.937;1.009)	0.03 (0.018;0.042)	0.996 (0.967;1.025)	-0.01 (-0.02;0.001)	1.036 (0.981;1.092)	0.025 (0.003;0.046)	0.966 (0.934;0.997)	-0.03 (-0.046;- 0.014)	0.972 (0.923;1.022)	-0.029 (-0.046;- 0.012)
SCORE CVD	1.016 (0.99;1.041)	0.009 (- 0.002;0.02)	0.975 (0.946;1.003)	0.03 (0.018;0.042)	1.001 (0.979;1.022)	-0.01 (-0.02;0.001)	1.042 (1.001;1.084)	0.027 (0.006;0.048)	0.98 (0.95;1.009)	-0.031 (-0.047;- 0.015)	0.965 (0.933;0.996)	-0.03 (-0.047;- 0.012)
DARTS	1.017 (0.946;1.088)	0.008 (- 0.003;0.019)	0.987 (0.887;1.087)	0.03 (0.018;0.041)	1.009 (0.954;1.064)	-0.01 (-0.02;0.001)	1.085 (0.929;1.24)	0.026 (0.004;0.048)	1.021 (0.933;1.109)	-0.029 (-0.045;- 0.013)	0.99 (0.897;1.083)	-0.028 (-0.045;- 0.01)
Finrisk CHD	1.009 (0.976;1.043)	0.009 (- 0.002;0.02)	0.971 (0.931;1.01)	0.031 (0.019;0.043)	0.997 (0.969;1.026)	-0.009 (- 0.02;0.002)	1.034 (0.987;1.081)	0.026 (0.005;0.047)	0.973 (0.938;1.008)	-0.029 (-0.045;- 0.013)	0.981 (0.939;1.023)	-0.028 (-0.045;- 0.01)
Framingham 1991 fatal	0.989	0.007 (-	0.936	0.029	0.993	-0.011 (-0.022;0)	1.117	0.023	0.966	-0.031 (-0.047;-	0.985	-0.03 (-0.048;-

CHD	(0.948;1.03)	0.004;0.018)	(0.888;0.984)	(0.017;0.041)	(0.958;1.029)		(1.039;1.195)	(0.002;0.044)	(0.913;1.018)	0.015)	(0.929;1.041)	0.013)
Framingham 1998	1.003 (0.98;1.026)	0.007 (- 0.004;0.018)	0.974 (0.948;1.001)	0.029 (0.017;0.041)	0.992 (0.974;1.01)	-0.011 (-0.022;0)	1.009 (0.971;1.046)	0.024 (0.003;0.045)	0.999 (0.974;1.024)	-0.031 (-0.047;- 0.015)	0.954 (0.926;0.981)	-0.03 (-0.048;- 0.013)
SCORE CHD	1.023 (0.995;1.051)	0.009 (- 0.002;0.02)	0.978 (0.946;1.01)	0.03 (0.018;0.043)	1.008 (0.983;1.032)	-0.01 (-0.02;0.001)	1.064 (1.015;1.112)	0.027 (0.006;0.048)	0.972 (0.939;1.005)	-0.03 (-0.046;- 0.014)	0.978 (0.942;1.014)	-0.029 (-0.046;- 0.012)
UKPDS 56	1.033 (0.982;1.084)	0.008 (- 0.003;0.019)	0.992 (0.923;1.061)	0.029 (0.017;0.041)	1.016 (0.971;1.062)	-0.01 (- 0.021;0.001)	1.027 (0.952;1.102)	0.023 (0.002;0.044)	0.95 (0.903;0.997)	-0.031 (-0.046;- 0.015)	0.998 (0.92;1.077)	-0.03 (-0.047;- 0.013)
UKPDS 82 CHD	0.989 (0.958;1.02)	0.006 (- 0.005;0.017)	0.984 (0.939;1.03)	0.027 (0.016;0.039)	0.984 (0.956;1.011)	-0.013 (-0.024;- 0.002)	0.953 (0.914;0.992)	0.023 (0.002;0.044)	1.011 (0.972;1.05)	-0.033 (-0.048;- 0.017)	0.925 (0.891;0.959)	-0.034 (-0.051;- 0.016)
Finrisk Stroke	1.019 (1;1.038)	0.006 (- 0.005;0.017)	0.991 (0.968;1.013)	0.028 (0.016;0.04)	1.003 (0.985;1.021)	-0.013 (-0.023;- 0.002)	1.016 (0.978;1.053)	0.022 (0;0.043)	0.996 (0.972;1.02)	-0.034 (-0.049;- 0.018)	0.99 (0.964;1.017)	-0.033 (-0.05;- 0.016)
Framingham 1991 Stroke	0.99 (0.955;1.026)	0.008 (- 0.004;0.019)	0.957 (0.921;0.993)	0.029 (0.017;0.041)	0.984 (0.952;1.016)	-0.01 (- 0.022;0.001)	1.031 (0.954;1.108)	0.023 (0.001;0.044)	0.978 (0.92;1.037)	-0.031 (-0.047;- 0.015)	0.974 (0.908;1.039)	-0.03 (-0.048;- 0.013)
RECODE	1.026 (1.004;1.049)	0.003 (- 0.01;0.015)	1.047 (1.017;1.077)	0.026 (0.013;0.04)	1.015 (0.995;1.035)	-0.017 (-0.029;- 0.005)	1.062 (0.973;1.151)	0.021 (0;0.043)	1.041 (0.991;1.091)	-0.035 (-0.051;- 0.018)	0.997 (0.952;1.042)	-0.036 (-0.055;- 0.018)
UKPDS 68 C-HF	1.008 (0.971;1.045)	0.006 (- 0.005;0.017)	0.995 (0.952;1.038)	0.028 (0.016;0.04)	0.994 (0.964;1.025)	-0.012 (-0.023;- 0.001)	0.988 (0.94;1.035)	0.023 (0.001;0.044)	0.998 (0.962;1.034)	-0.032 (-0.049;- 0.016)	0.945 (0.913;0.977)	-0.032 (-0.049;- 0.014)
UKPDS 68 Stroke	1.008 (0.971;1.045)	0.006 (- 0.005;0.017)	0.995 (0.952;1.038)	0.028 (0.016;0.04)	0.994 (0.964;1.025)	-0.012 (-0.023;- 0.001)	0.988 (0.94;1.035)	0.023 (0.001;0.044)	0.998 (0.962;1.034)	-0.032 (-0.049;- 0.016)	0.945 (0.913;0.977)	-0.032 (-0.049;- 0.014)
UKPDS 82 C-HF	1.013 (0.973;1.053)	0.006 (- 0.005;0.017)	1.003 (0.947;1.06)	0.028 (0.016;0.04)	0.994 (0.961;1.028)	-0.012 (-0.023;- 0.001)	0.997 (0.938;1.056)	0.022 (0.001;0.043)	0.993 (0.951;1.035)	-0.033 (-0.049;- 0.016)	0.947 (0.911;0.982)	-0.032 (-0.049;- 0.014)

Subgroup analysis: gender (male vs female), age stratification (4 bins defined based on age distribution), statins usage at the baseline (used vs not used) and CVD history at the baseline (absent vs present).

Appendix Table 16 Discrimination (c-statistic) and calibration (calibration-in-the-large (CIL) and calibration slope (CS)) for all included risk scores against CVD and CVD + AF + HF outcomes for the imputed dataset stratified by gender (male vs female).

Risk Score Name	Gender (male vs female)	CVD			CVD + AF + HF		
		C-stat	CS	CIL	C-stat	CS	CIL
ASCVD	male	0.665 (0.662;0.669)	1.025 (0.986;1.064)	-0.002 (-0.016;0.013)	0.686 (0.682;0.689)	1.003 (0.97;1.037)	0.007 (-0.007;0.021)
	female	0.686 (0.682;0.69)	0.975 (0.931;1.02)	0.031 (0.014;0.049)	0.708 (0.704;0.712)	0.939 (0.903;0.975)	0.024 (0.007;0.04)
Framingham 1991 fatal CHD	male	0.629 (0.624;0.633)	1.01 (0.95;1.07)	0 (-0.015;0.014)	0.641 (0.637;0.645)	0.992 (0.94;1.043)	0.008 (-0.006;0.021)
	female	0.65 (0.645;0.655)	1.06 (0.972;1.148)	0.034 (0.016;0.051)	0.662 (0.657;0.666)	1.01 (0.936;1.083)	0.026 (0.009;0.042)
Framingham 1991 CVD	male	0.623 (0.618;0.627)	1.022 (0.965;1.078)	-0.001 (-0.016;0.013)	0.632 (0.628;0.637)	1.001 (0.955;1.047)	0.007 (-0.007;0.021)
	female	0.631 (0.626;0.636)	1.109 (1.02;1.198)	0.032 (0.015;0.05)	0.638 (0.633;0.643)	1.06 (0.989;1.132)	0.024 (0.008;0.04)
Framingham 1991 Stroke	male	0.648 (0.644;0.652)	1.05 (0.998;1.102)	-0.002 (-0.016;0.013)	0.662 (0.658;0.666)	1.029 (0.993;1.064)	0.007 (-0.008;0.021)
	female	0.67 (0.665;0.674)	1.081 (0.991;1.171)	0.036 (0.019;0.053)	0.684 (0.679;0.688)	1.047 (0.976;1.118)	0.028 (0.012;0.045)
CHS Advanced	male	0.677 (0.673;0.68)	1.04 (1.016;1.065)	-0.005 (-0.02;0.009)	0.699 (0.695;0.702)	1.016 (0.995;1.037)	0.003 (-0.011;0.017)
	female	0.692 (0.687;0.696)	0.984 (0.957;1.011)	0.029 (0.012;0.046)	0.716 (0.713;0.72)	0.957 (0.935;0.979)	0.02 (0.004;0.037)
CHS Basic	male	0.675 (0.672;0.679)	1.04 (1.015;1.065)	-0.005 (-0.02;0.009)	0.697 (0.694;0.701)	1.015 (0.994;1.037)	0.003 (-0.011;0.017)
	female	0.691 (0.687;0.695)	0.981 (0.953;1.009)	0.029 (0.012;0.046)	0.716 (0.712;0.719)	0.956 (0.934;0.979)	0.02 (0.004;0.037)
DARTS	male	0.633 (0.629;0.637)	1.037 (0.926;1.148)	-0.002 (-0.017;0.012)	0.65 (0.646;0.654)	1.022 (0.929;1.114)	0.006 (-0.008;0.02)
	female	0.658 (0.654;0.663)	1.046 (0.972;1.121)	0.025 (0.007;0.042)	0.678 (0.673;0.682)	0.994 (0.937;1.052)	0.016 (-0.001;0.033)
Finrisk CHD	male	0.646 (0.642;0.649)	1.039 (0.984;1.094)	-0.001 (-0.016;0.013)	0.666 (0.662;0.669)	1.019 (0.973;1.065)	0.007 (-0.006;0.021)
	female	0.679 (0.674;0.683)	1.021 (0.965;1.076)	0.03 (0.013;0.048)	0.699 (0.694;0.703)	0.974 (0.928;1.021)	0.022 (0.005;0.039)
Finrisk CVD	male	0.668 (0.665;0.672)	1.038 (1;1.076)	-0.002 (-0.017;0.012)	0.69 (0.686;0.693)	1.015 (0.984;1.047)	0.006 (-0.008;0.02)
	female	0.684 (0.679;0.688)	1.016 (0.965;1.067)	0.031 (0.013;0.048)	0.704 (0.7;0.708)	0.972 (0.928;1.017)	0.023 (0.006;0.04)

Finrisk Stroke	male	0.679 (0.675;0.682)	1.04 (1.01;1.069)	-0.004 (-0.018;0.011)	0.701 (0.697;0.704)	1.016 (0.992;1.04)	0.005 (-0.009;0.019)
	female	0.689 (0.685;0.694)	1.007 (0.96;1.054)	0.032 (0.015;0.05)	0.71 (0.706;0.714)	0.969 (0.927;1.011)	0.025 (0.008;0.041)
Framingham 1998	male	0.669 (0.665;0.673)	1.041 (1.007;1.076)	-0.004 (-0.018;0.011)	0.69 (0.686;0.693)	1.021 (0.996;1.046)	0.005 (-0.009;0.02)
	female	0.689 (0.685;0.693)	1.027 (0.988;1.065)	0.034 (0.017;0.051)	0.712 (0.708;0.715)	0.985 (0.956;1.014)	0.027 (0.01;0.043)
QRISK 2	male	0.665 (0.661;0.668)	1.001 (0.949;1.053)	0.002 (-0.012;0.016)	0.681 (0.677;0.684)	0.969 (0.925;1.013)	0.011 (-0.003;0.025)
	female	0.687 (0.682;0.691)	1.006 (0.959;1.052)	0.031 (0.013;0.049)	0.707 (0.703;0.711)	0.966 (0.929;1.002)	0.023 (0.006;0.04)
QRISK 3	male	0.657 (0.653;0.661)	0.99 (0.938;1.043)	0.002 (-0.013;0.016)	0.674 (0.67;0.677)	0.966 (0.921;1.01)	0.011 (-0.003;0.025)
	female	0.684 (0.68;0.689)	1.011 (0.961;1.06)	0.03 (0.012;0.047)	0.704 (0.7;0.708)	0.967 (0.928;1.006)	0.021 (0.004;0.038)
RECODE	male	0.726 (0.722;0.73)	1.017 (0.985;1.049)	0 (-0.016;0.016)	0.728 (0.724;0.732)	1.007 (0.971;1.043)	0.01 (-0.006;0.025)
	female	0.73 (0.725;0.735)	0.994 (0.945;1.043)	0.034 (0.015;0.054)	0.735 (0.73;0.739)	0.982 (0.935;1.03)	0.025 (0.007;0.043)
Reynolds Risk	male	0.653 (0.65;0.657)	1.035 (0.988;1.082)	0 (-0.015;0.014)	0.673 (0.67;0.677)	1.019 (0.98;1.058)	0.008 (-0.006;0.022)
	female	0.66 (0.656;0.665)	1.039 (0.951;1.127)	0.03 (0.012;0.048)	0.679 (0.675;0.684)	0.987 (0.917;1.057)	0.022 (0.005;0.04)
SCORE CHD	male	0.654 (0.65;0.657)	1.043 (0.999;1.086)	0 (-0.015;0.014)	0.674 (0.671;0.678)	1.025 (0.989;1.061)	0.008 (-0.006;0.022)
	female	0.682 (0.678;0.686)	1.026 (0.985;1.066)	0.031 (0.013;0.048)	0.705 (0.701;0.709)	0.979 (0.946;1.012)	0.023 (0.007;0.039)
SCORE CVD	male	0.663 (0.659;0.667)	1.041 (1.002;1.081)	-0.001 (-0.016;0.013)	0.684 (0.681;0.688)	1.023 (0.991;1.055)	0.008 (-0.006;0.022)
	female	0.688 (0.683;0.692)	1.02 (0.983;1.057)	0.032 (0.015;0.049)	0.711 (0.707;0.715)	0.978 (0.948;1.008)	0.024 (0.008;0.04)
UKPDS 56	male	0.614 (0.609;0.618)	1.015 (0.915;1.115)	0 (-0.014;0.014)	0.63 (0.625;0.634)	1.017 (0.934;1.1)	0.008 (-0.005;0.022)
	female	0.642 (0.638;0.647)	1.042 (0.944;1.14)	0.028 (0.01;0.046)	0.66 (0.655;0.664)	0.988 (0.917;1.059)	0.019 (0.002;0.037)
UKPDS 68 C-HF	male	0.659 (0.655;0.663)	1.043 (0.998;1.089)	-0.001 (-0.016;0.014)	0.683 (0.679;0.687)	1.024 (0.984;1.064)	0.008 (-0.007;0.022)
	female	0.674 (0.669;0.678)	0.996 (0.961;1.031)	0.033 (0.015;0.05)	0.701 (0.697;0.705)	0.965 (0.934;0.996)	0.026 (0.009;0.042)
UKPDS 68 Stroke	male	0.659 (0.655;0.663)	1.043 (0.998;1.089)	-0.001 (-0.016;0.014)	0.683 (0.679;0.687)	1.024 (0.984;1.064)	0.008 (-0.007;0.022)
	female	0.674 (0.669;0.678)	0.996 (0.961;1.031)	0.033 (0.015;0.05)	0.701 (0.697;0.705)	0.965 (0.934;0.996)	0.026 (0.009;0.042)
UKPDS 82 C-HF	male	0.648 (0.644;0.653)	1.055 (0.997;1.113)	-0.001 (-0.016;0.014)	0.672 (0.668;0.677)	1.022 (0.975;1.07)	0.008 (-0.007;0.022)
	female	0.656 (0.651;0.662)	0.961 (0.918;1.004)	0.029 (0.011;0.047)	0.683 (0.678;0.687)	0.938 (0.902;0.974)	0.021 (0.003;0.038)
UKPDS 82 CHD	male	0.651 (0.647;0.656)	1.037 (0.977;1.096)	-0.001 (-0.016;0.013)	0.669 (0.665;0.673)	1.008 (0.954;1.061)	0.007 (-0.007;0.022)
	female	0.689 (0.683;0.695)	0.952 (0.915;0.99)	0.036 (0.018;0.053)	0.707 (0.702;0.713)	0.96 (0.925;0.996)	0.027 (0.01;0.043)

Appendix Table 17 Discrimination (c-statistic) and calibration (calibration-in-the-large (CIL) and calibration slope (CS)) for all included risk scores against CVD and CVD + AF + HF outcomes for the imputed dataset stratified by age subgroups (1st bin from 18 to less than 50 years, 2nd bin from 50 to less than 65 years, 3rd bin from 65 to less than 75 years, and 4th bin from 75).

Risk Score Name	Age-group (years)	CVD			CVD + AF + HF		
		C-stat	CS	CIL	C-stat	CS	CIL
ASCVD	[18, 50)	0.615 (0.605;0.625)	1.248 (0.83;1.665)	0.015 (-0.019;0.048)	0.604 (0.595;0.613)	1.286 (0.888;1.685)	0.012 (-0.019;0.043)
	[50, 65)	0.593 (0.588;0.599)	0.941 (0.844;1.038)	-0.018 (-0.037;0.001)	0.592 (0.587;0.597)	0.953 (0.854;1.052)	-0.011 (-0.029;0.007)
	[65, 75)	0.573 (0.567;0.579)	1.062 (0.929;1.195)	-0.043 (-0.064;-0.023)	0.573 (0.567;0.579)	1.165 (0.993;1.338)	-0.043 (-0.062;-0.023)
	[75, 105]	0.529 (0.522;0.536)	0.63 (0.307;0.952)	0.076 (0.054;0.098)	0.546 (0.539;0.552)	1.234 (0.877;1.591)	0.057 (0.035;0.079)
Framingham 1991 fatal CHD	[18, 50)	0.629 (0.619;0.639)	1.094 (0.898;1.289)	0.017 (-0.018;0.051)	0.619 (0.61;0.628)	1.118 (0.927;1.309)	0.014 (-0.017;0.046)
	[50, 65)	0.572 (0.566;0.578)	1.073 (0.884;1.261)	-0.018 (-0.036;0.001)	0.571 (0.565;0.576)	1.062 (0.879;1.246)	-0.011 (-0.028;0.007)
	[65, 75)	0.54 (0.533;0.546)	0.967 (0.718;1.217)	-0.038 (-0.058;-0.018)	0.538 (0.532;0.545)	1.009 (0.698;1.319)	-0.038 (-0.057;-0.019)
	[75, 105]	0.516 (0.508;0.523)	1.212 (-0.17;2.593)	0.076 (0.054;0.098)	0.521 (0.514;0.528)	0.922 (0.409;1.435)	0.057 (0.035;0.079)
Framingham 1991 CVD	[18, 50)	0.623 (0.613;0.633)	1.097 (0.951;1.243)	0.017 (-0.017;0.052)	0.614 (0.605;0.623)	1.136 (0.958;1.313)	0.015 (-0.017;0.046)
	[50, 65)	0.583 (0.577;0.589)	1.057 (0.881;1.233)	-0.017 (-0.036;0.002)	0.581 (0.575;0.586)	1.056 (0.882;1.231)	-0.01 (-0.028;0.008)
	[65, 75)	0.557 (0.551;0.563)	1.069 (0.895;1.243)	-0.038 (-0.058;-0.018)	0.553 (0.547;0.559)	1.081 (0.863;1.299)	-0.038 (-0.057;-0.018)
	[75, 105]	0.535 (0.528;0.542)	1.092 (0.62;1.564)	0.076 (0.054;0.099)	0.537 (0.53;0.543)	0.988 (0.663;1.314)	0.058 (0.036;0.08)
Framingham 1991 Stroke	[18, 50)	0.628 (0.619;0.638)	1.023 (0.93;1.116)	0.02 (-0.014;0.055)	0.62 (0.611;0.63)	1.061 (0.943;1.18)	0.017 (-0.014;0.049)
	[50, 65)	0.576 (0.57;0.582)	1.132 (0.941;1.324)	-0.019 (-0.038;0)	0.576 (0.57;0.583)	1.087 (0.916;1.257)	-0.012 (-0.029;0.006)
	[65, 75)	0.543 (0.537;0.55)	1.125 (0.849;1.4)	-0.039 (-0.059;-0.018)	0.545 (0.539;0.551)	1.069 (0.805;1.334)	-0.039 (-0.058;-0.019)
	[75, 105]	0.526 (0.519;0.533)	1.117 (0.603;1.632)	0.076 (0.054;0.098)	0.534 (0.527;0.541)	1.132 (0.697;1.566)	0.057 (0.035;0.079)

CHS Advanced	[18, 50)	0.63 (0.621;0.639)	1.138 (1.047;1.229)	0.011 (-0.023;0.044)	0.62 (0.612;0.628)	1.158 (1.067;1.249)	0.009 (-0.022;0.04)
	[50, 65)	0.585 (0.58;0.59)	1.011 (0.939;1.083)	-0.021 (-0.039;-0.002)	0.589 (0.584;0.594)	1.064 (0.997;1.131)	-0.014 (-0.031;0.004)
	[65, 75)	0.567 (0.561;0.574)	1.007 (0.893;1.121)	-0.035 (-0.055;-0.015)	0.572 (0.566;0.578)	1.083 (0.972;1.194)	-0.035 (-0.054;-0.015)
	[75, 105]	0.533 (0.526;0.539)	0.766 (0.538;0.994)	0.077 (0.054;0.099)	0.551 (0.544;0.557)	1.16 (0.936;1.384)	0.058 (0.036;0.08)
CHS Basic	[18, 50)	0.629 (0.62;0.638)	1.139 (1.045;1.233)	0.011 (-0.023;0.044)	0.619 (0.61;0.627)	1.156 (1.063;1.25)	0.009 (-0.022;0.04)
	[50, 65)	0.587 (0.582;0.592)	0.997 (0.922;1.072)	-0.02 (-0.039;-0.001)	0.59 (0.585;0.595)	1.051 (0.981;1.12)	-0.013 (-0.031;0.005)
	[65, 75)	0.569 (0.562;0.575)	1.008 (0.884;1.131)	-0.034 (-0.054;-0.014)	0.571 (0.565;0.577)	1.072 (0.951;1.193)	-0.034 (-0.053;-0.014)
	[75, 105]	0.536 (0.53;0.543)	0.799 (0.584;1.014)	0.077 (0.055;0.099)	0.552 (0.546;0.559)	1.144 (0.913;1.374)	0.058 (0.036;0.08)
DARTS	[18, 50)	0.62 (0.61;0.631)	1.235 (1.018;1.451)	0.008 (-0.025;0.042)	0.61 (0.601;0.62)	1.198 (1.003;1.394)	0.007 (-0.024;0.039)
	[50, 65)	0.542 (0.535;0.548)	0.919 (0.525;1.314)	-0.021 (-0.04;-0.003)	0.542 (0.535;0.549)	0.974 (0.555;1.394)	-0.014 (-0.032;0.004)
	[65, 75)	0.509 (0.491;0.526)	-0.452 (-10.744;9.839)	-0.038 (-0.058;-0.018)	0.512 (0.506;0.518)	2.436 (-2.858;7.731)	-0.038 (-0.057;-0.019)
	[75, 105]	0.502 (0.489;0.515)	0.477 (-3.223;4.177)	0.077 (0.054;0.099)	0.502 (0.488;0.515)	-0.487 (-5.277;4.304)	0.058 (0.036;0.079)
Finrisk CHD	[18, 50)	0.632 (0.623;0.642)	1.13 (0.964;1.296)	0.018 (-0.016;0.052)	0.622 (0.613;0.63)	1.192 (1.024;1.36)	0.015 (-0.016;0.046)
	[50, 65)	0.566 (0.56;0.571)	0.959 (0.806;1.111)	-0.02 (-0.038;-0.001)	0.567 (0.562;0.573)	0.947 (0.805;1.089)	-0.012 (-0.03;0.006)
	[65, 75)	0.534 (0.527;0.541)	0.972 (0.685;1.259)	-0.041 (-0.061;-0.021)	0.535 (0.529;0.542)	1.163 (0.8;1.526)	-0.04 (-0.059;-0.021)
	[75, 105]	0.509 (0.501;0.516)	0.807 (-0.498;2.112)	0.076 (0.054;0.098)	0.521 (0.514;0.528)	0.923 (0.379;1.467)	0.057 (0.035;0.078)
Finrisk CVD	[18, 50)	0.63 (0.621;0.64)	1.052 (0.91;1.194)	0.021 (-0.013;0.054)	0.622 (0.613;0.631)	1.103 (0.955;1.25)	0.017 (-0.014;0.048)
	[50, 65)	0.581 (0.575;0.586)	0.989 (0.869;1.11)	-0.02 (-0.038;-0.001)	0.583 (0.578;0.588)	0.987 (0.873;1.101)	-0.012 (-0.03;0.005)
	[65, 75)	0.565 (0.559;0.572)	1.075 (0.925;1.225)	-0.042 (-0.063;-0.022)	0.563 (0.557;0.569)	1.194 (1.007;1.381)	-0.042 (-0.061;-0.022)
	[75, 105]	0.54 (0.533;0.547)	0.869 (0.649;1.089)	0.076 (0.054;0.098)	0.549 (0.542;0.556)	0.938 (0.726;1.15)	0.057 (0.035;0.079)
Finrisk Stroke	[18, 50)	0.593 (0.584;0.602)	0.88 (0.771;0.99)	0.014 (-0.019;0.048)	0.59 (0.581;0.599)	0.942 (0.812;1.072)	0.012 (-0.019;0.043)
	[50, 65)	0.591 (0.585;0.596)	1.05 (0.961;1.139)	-0.021 (-0.039;-0.002)	0.594 (0.589;0.599)	1.051 (0.965;1.138)	-0.013 (-0.031;0.004)
	[65, 75)	0.585 (0.579;0.591)	1.14 (1.039;1.241)	-0.042 (-0.062;-0.022)	0.581 (0.575;0.586)	1.227 (1.11;1.343)	-0.041 (-0.061;-0.022)

	[75, 105]	0.557 (0.55;0.563)	0.903 (0.767;1.039)	0.077 (0.055;0.099)	0.559 (0.552;0.566)	0.952 (0.809;1.094)	0.058 (0.036;0.08)
Framingham 1998	[18, 50]	0.631 (0.621;0.64)	1.073 (0.947;1.198)	0.022 (-0.012;0.056)	0.624 (0.615;0.634)	1.106 (0.963;1.249)	0.02 (-0.012;0.051)
	[50, 65)	0.568 (0.561;0.574)	1.161 (0.92;1.402)	-0.021 (-0.04;-0.003)	0.572 (0.566;0.578)	1.127 (0.926;1.328)	-0.014 (-0.032;0.003)
	[65, 75)	0.539 (0.532;0.546)	1.219 (0.913;1.525)	-0.04 (-0.059;-0.02)	0.545 (0.538;0.552)	1.311 (0.918;1.705)	-0.04 (-0.059;-0.021)
	[75, 105]	0.516 (0.509;0.522)	0.924 (0.16;1.687)	0.076 (0.054;0.098)	0.533 (0.526;0.54)	1.181 (0.742;1.62)	0.057 (0.035;0.079)
QRISK 2	[18, 50]	0.658 (0.648;0.668)	1.053 (0.906;1.199)	0.022 (-0.012;0.056)	0.646 (0.638;0.655)	1.049 (0.916;1.183)	0.02 (-0.012;0.051)
	[50, 65)	0.605 (0.6;0.61)	0.984 (0.863;1.104)	-0.02 (-0.039;-0.002)	0.603 (0.598;0.608)	0.985 (0.863;1.106)	-0.013 (-0.031;0.005)
	[65, 75)	0.562 (0.556;0.569)	1.094 (0.844;1.344)	-0.04 (-0.06;-0.019)	0.562 (0.556;0.568)	1.211 (0.889;1.533)	-0.039 (-0.059;-0.02)
	[75, 105]	0.514 (0.507;0.521)	0.402 (0.077;0.728)	0.075 (0.053;0.098)	0.527 (0.52;0.534)	0.639 (0.416;0.863)	0.056 (0.034;0.078)
QRISK 3	[18, 50]	0.654 (0.644;0.663)	1.051 (0.901;1.201)	0.024 (-0.01;0.058)	0.643 (0.634;0.652)	1.04 (0.907;1.174)	0.022 (-0.01;0.054)
	[50, 65)	0.594 (0.589;0.6)	1.02 (0.881;1.16)	-0.02 (-0.039;-0.001)	0.594 (0.589;0.599)	0.989 (0.857;1.12)	-0.013 (-0.031;0.005)
	[65, 75)	0.553 (0.546;0.559)	1.069 (0.791;1.347)	-0.04 (-0.06;-0.019)	0.554 (0.548;0.56)	1.132 (0.817;1.448)	-0.04 (-0.059;-0.02)
	[75, 105]	0.512 (0.505;0.519)	0.506 (-0.005;1.018)	0.076 (0.054;0.098)	0.524 (0.517;0.531)	0.815 (0.441;1.189)	0.056 (0.035;0.078)
RECODE	[18, 50]	0.654 (0.644;0.663)	1.105 (0.955;1.254)	0.006 (-0.029;0.041)	0.638 (0.628;0.647)	1.099 (0.964;1.235)	0.005 (-0.027;0.037)
	[50, 65)	0.674 (0.667;0.681)	0.992 (0.908;1.076)	-0.018 (-0.038;0.003)	0.659 (0.652;0.665)	1.019 (0.932;1.107)	-0.01 (-0.029;0.009)
	[65, 75)	0.682 (0.676;0.688)	1.003 (0.947;1.058)	-0.042 (-0.067;-0.017)	0.66 (0.655;0.666)	1.008 (0.95;1.067)	-0.041 (-0.064;-0.018)
	[75, 105]	0.652 (0.645;0.659)	0.888 (0.776;0.999)	0.079 (0.055;0.103)	0.64 (0.633;0.647)	0.946 (0.821;1.072)	0.058 (0.035;0.082)
Reynolds Risk	[18, 50]	0.632 (0.623;0.642)	1.039 (0.899;1.18)	0.018 (-0.016;0.052)	0.623 (0.614;0.632)	1.094 (0.974;1.214)	0.015 (-0.017;0.046)
	[50, 65)	0.57 (0.564;0.576)	1.027 (0.873;1.18)	-0.02 (-0.038;-0.001)	0.571 (0.566;0.577)	0.994 (0.844;1.143)	-0.012 (-0.03;0.006)
	[65, 75)	0.544 (0.538;0.551)	0.951 (0.736;1.166)	-0.041 (-0.061;-0.021)	0.543 (0.537;0.549)	1.068 (0.75;1.386)	-0.041 (-0.06;-0.021)
	[75, 105]	0.517 (0.51;0.524)	0.902 (0.232;1.572)	0.076 (0.054;0.098)	0.527 (0.52;0.534)	0.981 (0.368;1.593)	0.057 (0.035;0.079)
SCORE CHD	[18, 50]	0.645 (0.636;0.654)	1.236 (1.121;1.351)	0.015 (-0.019;0.048)	0.632 (0.623;0.64)	1.253 (1.137;1.369)	0.012 (-0.019;0.043)
	[50, 65)	0.584 (0.578;0.589)	0.946 (0.841;1.05)	-0.019 (-0.038;0)	0.583 (0.578;0.588)	0.939 (0.84;1.039)	-0.012 (-0.029;0.006)

	[65, 75]	0.547 (0.541;0.553)	1.045 (0.826;1.265)	-0.04 (-0.06;-0.02)	0.547 (0.541;0.553)	1.188 (0.874;1.502)	-0.04 (-0.059;-0.02)
	[75, 105]	0.512 (0.506;0.519)	0.933 (0.178;1.689)	0.075 (0.053;0.097)	0.525 (0.518;0.531)	0.973 (0.569;1.377)	0.056 (0.034;0.078)
SCORE CVD	[18, 50]	0.649 (0.64;0.658)	1.205 (1.101;1.309)	0.016 (-0.018;0.05)	0.636 (0.628;0.645)	1.221 (1.113;1.328)	0.013 (-0.018;0.045)
	[50, 65]	0.587 (0.582;0.593)	0.985 (0.88;1.09)	-0.019 (-0.038;-0.001)	0.589 (0.583;0.594)	0.971 (0.873;1.07)	-0.012 (-0.03;0.005)
	[65, 75]	0.549 (0.542;0.555)	1.024 (0.822;1.226)	-0.042 (-0.062;-0.021)	0.551 (0.545;0.557)	1.158 (0.893;1.423)	-0.041 (-0.06;-0.022)
	[75, 105]	0.515 (0.509;0.522)	0.828 (0.373;1.283)	0.075 (0.053;0.097)	0.53 (0.523;0.536)	1.012 (0.681;1.343)	0.056 (0.033;0.078)
UKPDS 56	[18, 50]	0.602 (0.592;0.612)	1.191 (0.911;1.471)	0.009 (-0.024;0.043)	0.591 (0.582;0.601)	1.214 (0.982;1.445)	0.007 (-0.024;0.039)
	[50, 65]	0.558 (0.551;0.564)	0.96 (0.768;1.151)	-0.019 (-0.038;0)	0.556 (0.55;0.563)	0.97 (0.782;1.158)	-0.012 (-0.03;0.006)
	[65, 75]	0.542 (0.535;0.549)	1.046 (0.782;1.309)	-0.04 (-0.06;-0.02)	0.538 (0.531;0.544)	1.173 (0.818;1.529)	-0.039 (-0.058;-0.02)
	[75, 105]	0.522 (0.514;0.529)	0.871 (0.367;1.375)	0.076 (0.054;0.099)	0.527 (0.52;0.534)	0.84 (0.503;1.178)	0.057 (0.035;0.079)
UKPDS 68 C-HF	[18, 50]	0.58 (0.57;0.59)	0.92 (0.744;1.095)	0.01 (-0.024;0.044)	0.583 (0.573;0.592)	0.88 (0.732;1.028)	0.01 (-0.022;0.042)
	[50, 65]	0.531 (0.525;0.537)	2.013 (0.394;3.632)	-0.021 (-0.039;-0.003)	0.544 (0.539;0.55)	1.275 (0.75;1.8)	-0.014 (-0.031;0.004)
	[65, 75]	0.514 (0.506;0.521)	0.628 (0.006;1.249)	-0.039 (-0.059;-0.019)	0.527 (0.52;0.535)	0.918 (0.212;1.624)	-0.04 (-0.06;-0.021)
	[75, 105]	0.507 (0.498;0.515)	0.609 (-0.763;1.98)	0.076 (0.054;0.098)	0.528 (0.52;0.537)	1.379 (0.117;2.641)	0.057 (0.035;0.079)
UKPDS 68 Stroke	[18, 50]	0.58 (0.57;0.59)	0.92 (0.744;1.095)	0.01 (-0.024;0.044)	0.583 (0.573;0.592)	0.88 (0.732;1.028)	0.01 (-0.022;0.042)
	[50, 65]	0.531 (0.525;0.537)	2.013 (0.394;3.632)	-0.021 (-0.039;-0.003)	0.544 (0.539;0.55)	1.275 (0.75;1.8)	-0.014 (-0.031;0.004)
	[65, 75]	0.514 (0.506;0.521)	0.628 (0.006;1.249)	-0.039 (-0.059;-0.019)	0.527 (0.52;0.535)	0.918 (0.212;1.624)	-0.04 (-0.06;-0.021)
	[75, 105]	0.507 (0.498;0.515)	0.609 (-0.763;1.98)	0.076 (0.054;0.098)	0.528 (0.52;0.537)	1.379 (0.117;2.641)	0.057 (0.035;0.079)
UKPDS 82 C-HF	[18, 50]	0.58 (0.57;0.591)	1.052 (0.761;1.344)	0.01 (-0.024;0.044)	0.582 (0.573;0.592)	0.959 (0.758;1.16)	0.011 (-0.021;0.043)
	[50, 65]	0.528 (0.52;0.536)	1.286 (0.867;1.706)	-0.021 (-0.04;-0.003)	0.541 (0.533;0.548)	1.082 (0.826;1.338)	-0.014 (-0.032;0.004)
	[65, 75]	0.507 (0.498;0.515)	0.474 (-0.085;1.034)	-0.038 (-0.058;-0.018)	0.522 (0.514;0.53)	1.137 (0.365;1.908)	-0.038 (-0.057;-0.019)
	[75, 105]	0.497 (0.489;0.505)	-0.429 (-1.748;0.891)	0.076 (0.054;0.098)	0.519 (0.51;0.527)	0.874 (0.32;1.429)	0.057 (0.035;0.079)
UKPDS 82 CHD	[18, 50]	0.557 (0.546;0.567)	0.822 (0.642;1.003)	0.006 (-0.027;0.04)	0.555 (0.545;0.565)	0.745 (0.603;0.887)	0.006 (-0.026;0.037)

	[50, 65)	0.519 (0.51;0.527)	1.925 (0.693;3.156)	-0.022 (-0.04;-0.003)	0.524 (0.515;0.533)	1.362 (0.908;1.816)	-0.015 (-0.032;0.003)
	[65, 75)	0.513 (0.504;0.521)	0.713 (0.459;0.966)	-0.038 (-0.058;-0.017)	0.52 (0.512;0.528)	0.951 (0.709;1.193)	-0.038 (-0.057;-0.018)
	[75, 105]	0.515 (0.508;0.523)	0.779 (0.49;1.069)	0.074 (0.052;0.096)	0.531 (0.524;0.538)	1.297 (0.942;1.652)	0.055 (0.033;0.077)

Appendix Table 18 Discrimination (c-statistic) and calibration (calibration-in-the-large (CIL) and calibration slope (CS)) for all included risk scores against CVD and CVD + AF + HF outcomes for the imputed dataset stratified by statins usage at the baseline (statin naïve vs statin users).

Risk Score Name	Statins usage at the baseline (statin naïve vs statin users)	CVD			CVD + AF + HF		
		C-stat	CS	CIL	C-stat	CS	CIL
ASCVD	statin naïve	0.692 (0.688;0.695)	1.022 (0.989;1.055)	0.026 (0.012;0.041)	0.713 (0.71;0.716)	1.011 (0.983;1.038)	0.025 (0.011;0.039)
	statin users	0.623 (0.619;0.628)	1.002 (0.949;1.054)	-0.024 (-0.042;-0.007)	0.643 (0.639;0.648)	0.955 (0.915;0.996)	-0.025 (-0.042;-0.008)
Framingham 1991 fatal CHD	statin naïve	0.659 (0.655;0.663)	1.107 (1.054;1.16)	0.028 (0.014;0.043)	0.672 (0.668;0.675)	1.06 (1.024;1.095)	0.026 (0.013;0.04)
	statin users	0.589 (0.584;0.594)	1.02 (0.923;1.118)	-0.02 (-0.038;-0.003)	0.598 (0.593;0.603)	1.006 (0.92;1.093)	-0.021 (-0.038;-0.004)
Framingham 1991 CVD	statin naïve	0.644 (0.64;0.649)	1.111 (1.056;1.167)	0.028 (0.013;0.042)	0.652 (0.647;0.656)	1.061 (1.023;1.099)	0.025 (0.012;0.039)
	statin users	0.593 (0.588;0.598)	1.039 (0.954;1.123)	-0.021 (-0.038;-0.003)	0.597 (0.592;0.602)	1.043 (0.967;1.119)	-0.021 (-0.038;-0.004)
Framingham 1991 Stroke	statin naïve	0.668 (0.663;0.672)	1.086 (1.039;1.132)	0.03 (0.016;0.045)	0.684 (0.68;0.688)	1.05 (1.018;1.083)	0.029 (0.015;0.043)
	statin users	0.602 (0.597;0.607)	1.027 (0.964;1.09)	-0.021 (-0.039;-0.004)	0.616 (0.612;0.621)	1.04 (0.989;1.09)	-0.022 (-0.039;-0.005)
CHS Advanced	statin naïve	0.693 (0.69;0.696)	1.031 (1.007;1.055)	0.025 (0.01;0.039)	0.72 (0.716;0.723)	1.02 (1;1.041)	0.022 (0.009;0.036)
	statin users	0.626 (0.622;0.631)	0.988 (0.949;1.028)	-0.021 (-0.038;-0.003)	0.649 (0.645;0.654)	0.95 (0.918;0.982)	-0.021 (-0.038;-0.004)
CHS Basic	statin naïve	0.693 (0.689;0.696)	1.033 (1.007;1.058)	0.024 (0.01;0.038)	0.719 (0.716;0.722)	1.021 (0.999;1.043)	0.021 (0.008;0.035)
	statin users	0.628 (0.624;0.633)	0.994 (0.954;1.033)	-0.021 (-0.038;-0.003)	0.651 (0.646;0.655)	0.955 (0.923;0.987)	-0.021 (-0.038;-0.003)
DARTS	statin naïve	0.671 (0.667;0.675)	1.063 (1.017;1.109)	0.026 (0.011;0.04)	0.689 (0.686;0.693)	1.048 (1.008;1.087)	0.024 (0.009;0.038)
	statin users	0.579 (0.573;0.584)	0.953 (0.862;1.045)	-0.026 (-0.044;-0.009)	0.594 (0.589;0.599)	0.896 (0.83;0.962)	-0.028 (-0.045;-0.011)
Finrisk CHD	statin naïve	0.688 (0.684;0.691)	1.062 (1.028;1.095)	0.027 (0.012;0.042)	0.707 (0.704;0.71)	1.04 (1.012;1.069)	0.026 (0.012;0.039)
	statin users	0.599 (0.594;0.604)	1.006 (0.943;1.07)	-0.024 (-0.041;-0.006)	0.617 (0.612;0.622)	0.961 (0.91;1.013)	-0.024 (-0.042;-0.007)
Finrisk CVD	statin naïve	0.696 (0.692;0.7)	1.045 (1.017;1.074)	0.028 (0.013;0.042)	0.716 (0.713;0.72)	1.024 (1.001;1.048)	0.026 (0.012;0.04)
	statin users	0.62 (0.616;0.625)	1.001 (0.954;1.048)	-0.02 (-0.038;-0.003)	0.639 (0.634;0.643)	0.956 (0.916;0.996)	-0.02 (-0.038;-0.003)
Finrisk Stroke	statin naïve	0.696 (0.692;0.7)	1.032 (1.006;1.059)	0.028 (0.013;0.042)	0.717 (0.714;0.721)	1.012 (0.99;1.034)	0.026 (0.012;0.04)
	statin users	0.632 (0.627;0.636)	1.001 (0.96;1.041)	-0.016 (-0.034;0.001)	0.649 (0.645;0.654)	0.954 (0.919;0.988)	-0.016 (-0.033;0.002)
Framingham 1998	statin naïve	0.691 (0.687;0.694)	1.039 (1.007;1.071)	0.029 (0.015;0.044)	0.715 (0.712;0.718)	1.022 (0.999;1.045)	0.028 (0.014;0.042)

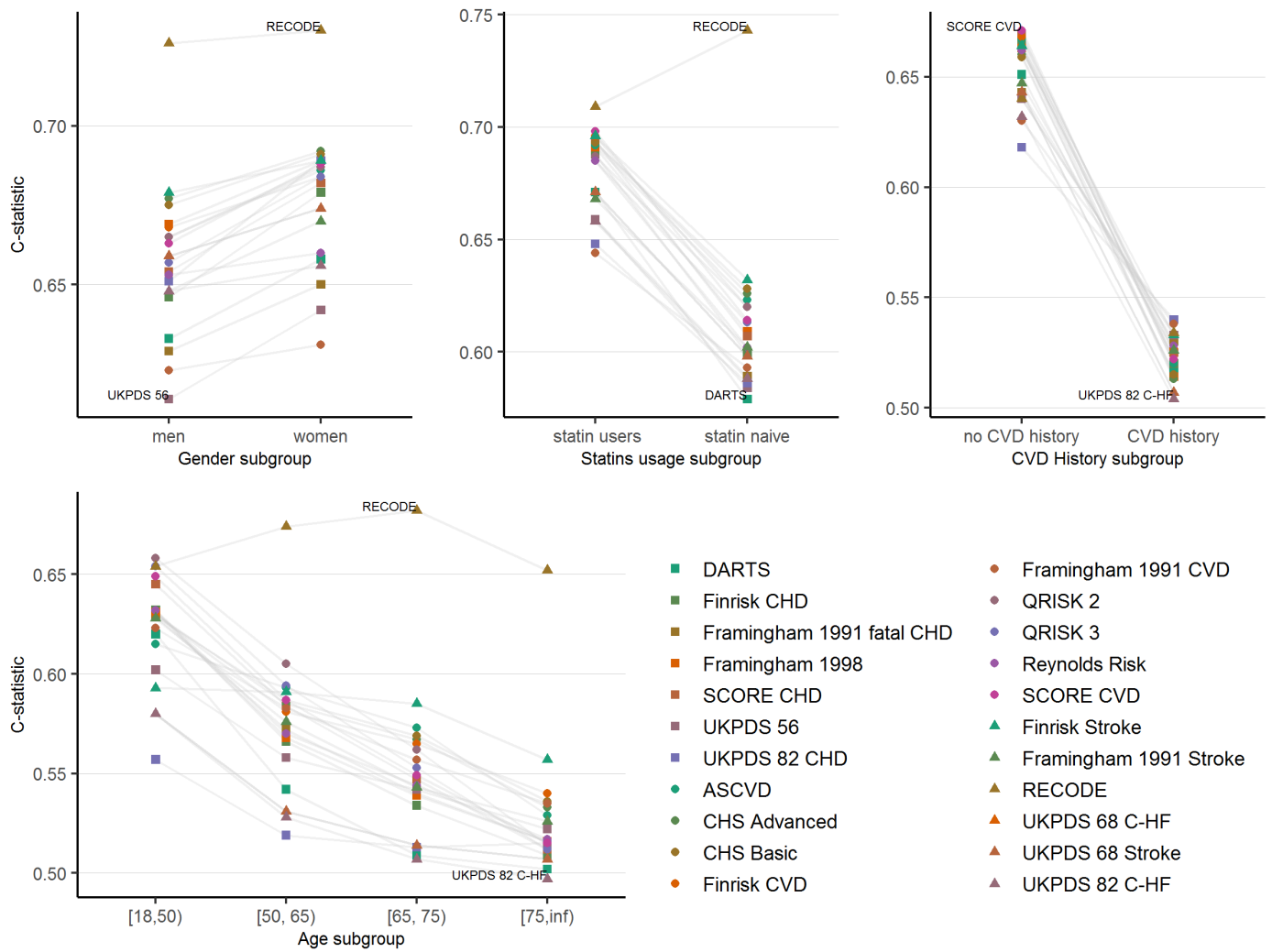
	statin users	0.609 (0.605;0.614)	1 (0.952;1.048)	-0.022 (-0.04;-0.005)	0.632 (0.627;0.636)	0.994 (0.954;1.033)	-0.023 (-0.04;-0.006)
QRISK 2	statin naïve	0.687 (0.683;0.69)	1.041 (0.995;1.087)	0.027 (0.012;0.041)	0.707 (0.704;0.711)	1.022 (0.989;1.056)	0.025 (0.011;0.039)
	statin users	0.62 (0.615;0.625)	0.98 (0.927;1.033)	-0.023 (-0.04;-0.005)	0.636 (0.632;0.641)	0.963 (0.913;1.013)	-0.023 (-0.04;-0.005)
QRISK 3	statin naïve	0.685 (0.681;0.689)	1.04 (0.997;1.083)	0.027 (0.012;0.042)	0.705 (0.702;0.708)	1.017 (0.985;1.049)	0.025 (0.011;0.04)
	statin users	0.613 (0.608;0.618)	0.993 (0.935;1.05)	-0.022 (-0.039;-0.004)	0.63 (0.625;0.634)	0.957 (0.902;1.012)	-0.022 (-0.039;-0.004)
RECODE	statin naïve	0.709 (0.704;0.713)	1.077 (1.033;1.121)	0.026 (0.011;0.041)	0.717 (0.713;0.721)	1.066 (1.031;1.101)	0.023 (0.009;0.037)
	statin users	0.743 (0.738;0.747)	0.992 (0.955;1.029)	-0.011 (-0.031;0.009)	0.74 (0.735;0.744)	0.951 (0.917;0.985)	-0.012 (-0.031;0.008)
Reynolds Risk	statin naïve	0.685 (0.681;0.688)	1.057 (1.019;1.094)	0.028 (0.013;0.043)	0.702 (0.699;0.705)	1.034 (1.004;1.065)	0.026 (0.012;0.04)
	statin users	0.602 (0.597;0.607)	1.01 (0.944;1.077)	-0.022 (-0.04;-0.005)	0.617 (0.612;0.622)	0.966 (0.914;1.019)	-0.023 (-0.04;-0.005)
SCORE CHD	statin naïve	0.694 (0.691;0.698)	1.066 (1.035;1.097)	0.027 (0.012;0.041)	0.714 (0.71;0.717)	1.043 (1.019;1.066)	0.025 (0.011;0.038)
	statin users	0.607 (0.603;0.612)	1.028 (0.977;1.08)	-0.024 (-0.041;-0.006)	0.625 (0.62;0.63)	0.967 (0.927;1.008)	-0.024 (-0.041;-0.007)
SCORE CVD	statin naïve	0.698 (0.694;0.701)	1.056 (1.029;1.083)	0.028 (0.013;0.042)	0.719 (0.716;0.722)	1.036 (1.014;1.057)	0.026 (0.013;0.04)
	statin users	0.614 (0.609;0.619)	1.015 (0.968;1.062)	-0.023 (-0.041;-0.006)	0.634 (0.63;0.639)	0.963 (0.926;1.001)	-0.024 (-0.041;-0.006)
UKPDS 56	statin naïve	0.659 (0.655;0.664)	1.079 (1.025;1.134)	0.024 (0.01;0.039)	0.67 (0.666;0.673)	1.058 (1.01;1.106)	0.022 (0.008;0.035)
	statin users	0.584 (0.578;0.59)	1.002 (0.913;1.091)	-0.023 (-0.04;-0.006)	0.591 (0.586;0.597)	0.929 (0.849;1.009)	-0.023 (-0.04;-0.006)
UKPDS 68 C-HF	statin naïve	0.671 (0.668;0.675)	1.04 (0.998;1.082)	0.026 (0.012;0.041)	0.7 (0.697;0.704)	1.031 (0.997;1.064)	0.025 (0.011;0.039)
	statin users	0.598 (0.593;0.603)	0.933 (0.867;0.998)	-0.021 (-0.039;-0.003)	0.625 (0.62;0.629)	0.923 (0.879;0.968)	-0.021 (-0.038;-0.003)
UKPDS 68 Stroke	statin naïve	0.671 (0.668;0.675)	1.04 (0.998;1.082)	0.026 (0.012;0.041)	0.7 (0.697;0.704)	1.031 (0.997;1.064)	0.025 (0.011;0.039)
	statin users	0.598 (0.593;0.603)	0.933 (0.867;0.998)	-0.021 (-0.039;-0.003)	0.625 (0.62;0.629)	0.923 (0.879;0.968)	-0.021 (-0.038;-0.003)
UKPDS 82 C-HF	statin naïve	0.658 (0.653;0.663)	1.021 (0.981;1.061)	0.022 (0.007;0.037)	0.687 (0.683;0.691)	1.013 (0.977;1.048)	0.019 (0.005;0.034)
	statin users	0.588 (0.583;0.593)	0.89 (0.803;0.977)	-0.021 (-0.038;-0.003)	0.614 (0.609;0.619)	0.911 (0.847;0.976)	-0.021 (-0.038;-0.003)
UKPDS 82 CHD	statin naïve	0.648 (0.643;0.653)	1.032 (0.978;1.086)	0.026 (0.012;0.04)	0.671 (0.666;0.675)	1.036 (0.993;1.079)	0.024 (0.01;0.037)
	statin users	0.586 (0.58;0.591)	1.011 (0.93;1.091)	-0.024 (-0.042;-0.007)	0.605 (0.6;0.61)	1.024 (0.955;1.094)	-0.026 (-0.043;-0.008)

Appendix Table 19 Discrimination (c-statistic) and calibration (calibration-in-the-large (CIL) and calibration slope (CS)) for all included risk scores against CVD and CVD + AF + HF outcomes for the imputed dataset stratified by CVD history at the baseline (absent vs present).

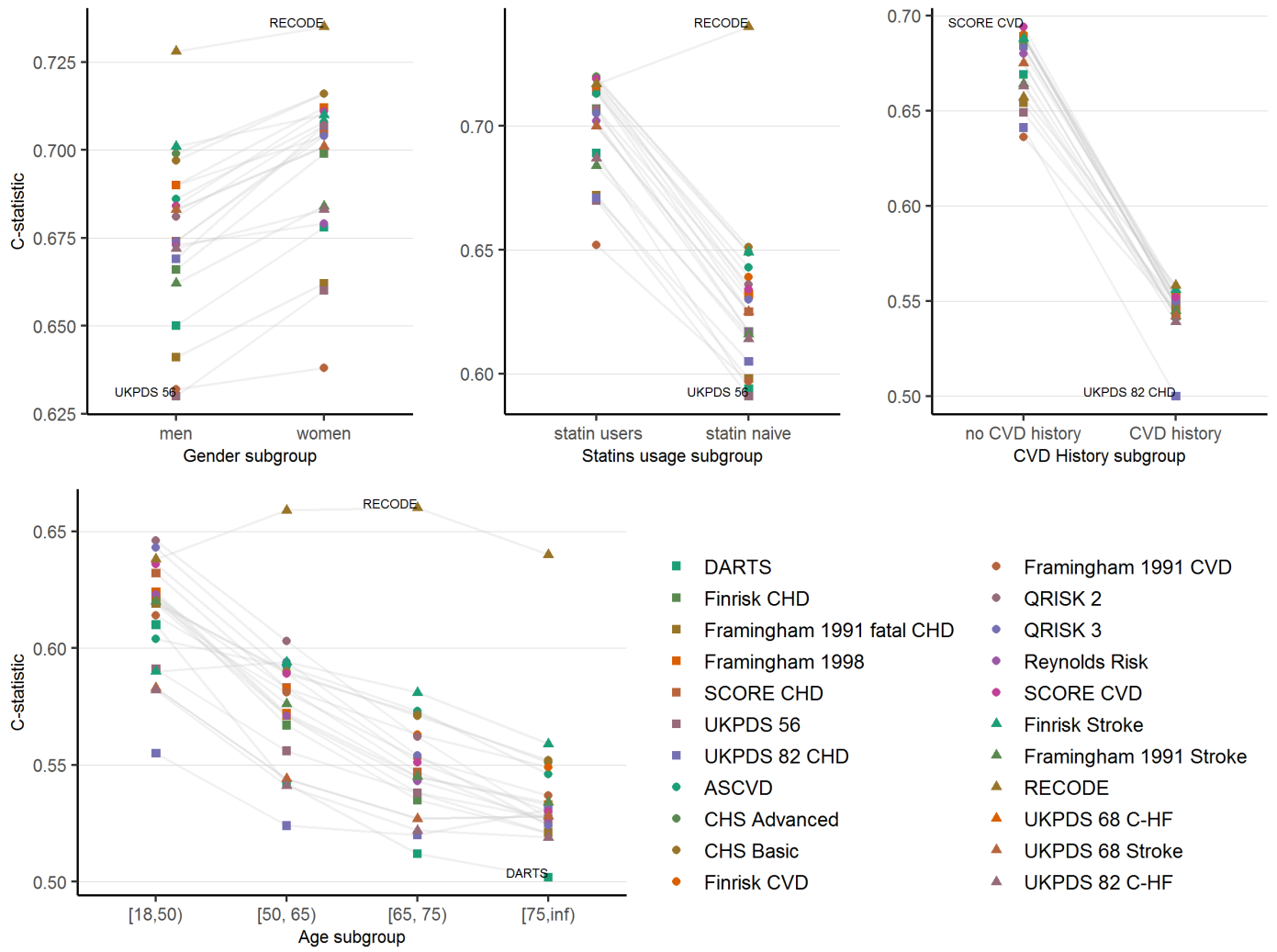
Risk Score Name	CVD history at the baseline (absent vs present)	CVD			CVD + AF + HF		
		C-stat	CS	CIL	C-stat	CS	CIL
ASCVD	absent	0.667 (0.664;0.671)	0.943 (0.91;0.977)	-0.012 (-0.026;0.002)	0.689 (0.686;0.693)	0.95 (0.922;0.979)	-0.006 (-0.019;0.007)
	present	0.52 (0.513;0.528)	0.277 (0.077;0.477)	0.01 (-0.014;0.035)	0.552 (0.544;0.56)	0.626 (0.51;0.743)	0.047 (0.021;0.073)
Framingham 1991 fatal CHD	absent	0.643 (0.639;0.647)	0.946 (0.903;0.989)	-0.009 (-0.023;0.004)	0.654 (0.65;0.657)	0.949 (0.914;0.984)	-0.002 (-0.015;0.01)
	present	0.53 (0.522;0.538)	0.814 (0.534;1.095)	0.013 (-0.011;0.038)	0.544 (0.536;0.553)	0.89 (0.641;1.138)	0.052 (0.027;0.078)
Framingham 1991 CVD	absent	0.63 (0.626;0.634)	0.959 (0.918;1)	-0.009 (-0.023;0.004)	0.636 (0.632;0.639)	0.958 (0.922;0.995)	-0.002 (-0.014;0.01)
	present	0.538 (0.53;0.546)	0.769 (0.565;0.974)	0.015 (-0.01;0.039)	0.545 (0.537;0.554)	0.835 (0.615;1.055)	0.054 (0.028;0.079)
Framingham 1991 Stroke	absent	0.647 (0.643;0.651)	0.974 (0.929;1.019)	-0.005 (-0.019;0.008)	0.664 (0.66;0.667)	0.983 (0.942;1.024)	0.002 (-0.011;0.014)
	present	0.526 (0.519;0.534)	0.63 (0.422;0.838)	0.014 (-0.011;0.038)	0.545 (0.537;0.553)	0.828 (0.605;1.052)	0.053 (0.028;0.079)
CHS Advanced	absent	0.66 (0.656;0.663)	0.936 (0.912;0.959)	-0.008 (-0.021;0.006)	0.689 (0.686;0.692)	0.944 (0.925;0.962)	0 (-0.012;0.012)
	present	0.513 (0.506;0.52)	0.364 (0.136;0.592)	0.011 (-0.013;0.035)	0.547 (0.54;0.554)	0.752 (0.627;0.876)	0.048 (0.023;0.074)
CHS Basic	absent	0.659 (0.656;0.663)	0.936 (0.912;0.96)	-0.008 (-0.021;0.006)	0.688 (0.685;0.692)	0.944 (0.925;0.963)	0 (-0.013;0.012)
	present	0.515 (0.507;0.522)	0.406 (0.199;0.612)	0.011 (-0.013;0.035)	0.548 (0.54;0.555)	0.748 (0.626;0.871)	0.048 (0.022;0.074)
DARTS	absent	0.651 (0.647;0.655)	0.926 (0.873;0.98)	-0.01 (-0.024;0.004)	0.669 (0.665;0.672)	0.932 (0.889;0.975)	-0.002 (-0.016;0.011)
	present	0.516 (0.507;0.524)	0.39 (0.095;0.685)	0.013 (-0.011;0.038)	0.542 (0.533;0.55)	0.723 (0.47;0.976)	0.053 (0.027;0.078)
Finrisk CHD	absent	0.665 (0.661;0.668)	0.955 (0.926;0.984)	-0.01 (-0.024;0.004)	0.684 (0.681;0.688)	0.953 (0.927;0.978)	-0.003 (-0.016;0.01)
	present	0.52 (0.513;0.528)	0.514 (0.296;0.732)	0.011 (-0.013;0.036)	0.548 (0.54;0.556)	0.788 (0.617;0.959)	0.05 (0.024;0.075)
Finrisk CVD	absent	0.668 (0.665;0.672)	0.949 (0.923;0.975)	-0.007 (-0.021;0.006)	0.69 (0.687;0.694)	0.946 (0.924;0.968)	0 (-0.013;0.013)
	present	0.527 (0.52;0.535)	0.65 (0.468;0.831)	0.011 (-0.014;0.035)	0.554 (0.547;0.562)	0.843 (0.7;0.986)	0.048 (0.023;0.074)
Finrisk Stroke	absent	0.664 (0.661;0.668)	0.94 (0.915;0.965)	-0.005 (-0.018;0.009)	0.688 (0.685;0.691)	0.939 (0.918;0.96)	0.003 (-0.009;0.016)
	present	0.533 (0.525;0.54)	0.761 (0.591;0.931)	0.011 (-0.014;0.035)	0.556 (0.549;0.564)	0.898 (0.759;1.037)	0.049 (0.023;0.074)

Framingham 1998	absent	0.663 (0.66;0.667)	0.943 (0.915;0.971)	-0.009 (-0.023;0.004)	0.689 (0.686;0.692)	0.954 (0.93;0.977)	-0.002 (-0.015;0.01)
	present	0.514 (0.507;0.521)	0.483 (0.211;0.755)	0.013 (-0.012;0.037)	0.547 (0.54;0.555)	0.862 (0.711;1.013)	0.051 (0.026;0.077)
QRISK 2	absent	0.663 (0.659;0.666)	0.932 (0.892;0.973)	-0.014 (-0.028;0)	0.683 (0.68;0.686)	0.935 (0.909;0.961)	-0.007 (-0.02;0.006)
	present	0.522 (0.514;0.529)	0.459 (0.275;0.642)	0.01 (-0.015;0.034)	0.549 (0.542;0.557)	0.671 (0.519;0.822)	0.047 (0.021;0.072)
QRISK 3	absent	0.663 (0.66;0.667)	0.936 (0.891;0.982)	-0.014 (-0.028;0)	0.683 (0.68;0.686)	0.935 (0.907;0.962)	-0.007 (-0.02;0.006)
	present	0.522 (0.515;0.53)	0.521 (0.314;0.728)	0.009 (-0.016;0.033)	0.55 (0.542;0.558)	0.723 (0.552;0.894)	0.045 (0.019;0.071)
RECODE	absent	0.64 (0.636;0.645)	0.98 (0.929;1.031)	-0.007 (-0.021;0.008)	0.657 (0.653;0.661)	0.963 (0.926;1)	0.001 (-0.013;0.014)
	present	0.534 (0.527;0.542)	0.52 (0.294;0.745)	0.01 (-0.014;0.035)	0.558 (0.55;0.566)	0.721 (0.525;0.917)	0.049 (0.023;0.075)
Reynolds Risk	absent	0.662 (0.658;0.665)	0.958 (0.922;0.994)	-0.01 (-0.024;0.005)	0.68 (0.676;0.683)	0.957 (0.925;0.988)	-0.003 (-0.016;0.011)
	present	0.528 (0.52;0.536)	0.56 (0.35;0.77)	0.011 (-0.014;0.035)	0.552 (0.543;0.56)	0.754 (0.547;0.961)	0.049 (0.023;0.075)
SCORE CHD	absent	0.669 (0.665;0.672)	0.958 (0.928;0.989)	-0.01 (-0.024;0.003)	0.689 (0.686;0.692)	0.966 (0.939;0.992)	-0.004 (-0.016;0.009)
	present	0.525 (0.518;0.533)	0.574 (0.422;0.725)	0.012 (-0.012;0.036)	0.552 (0.545;0.56)	0.749 (0.628;0.87)	0.051 (0.025;0.076)
SCORE CVD	absent	0.671 (0.667;0.674)	0.955 (0.927;0.984)	-0.009 (-0.022;0.005)	0.694 (0.69;0.697)	0.964 (0.94;0.988)	-0.002 (-0.015;0.01)
	present	0.522 (0.515;0.529)	0.553 (0.394;0.713)	0.012 (-0.013;0.036)	0.552 (0.545;0.56)	0.765 (0.646;0.885)	0.05 (0.024;0.076)
UKPDS 56	absent	0.64 (0.635;0.644)	0.964 (0.917;1.011)	-0.011 (-0.025;0.004)	0.649 (0.645;0.652)	0.941 (0.906;0.976)	-0.003 (-0.017;0.011)
	present	0.533 (0.525;0.541)	0.647 (0.364;0.929)	0.01 (-0.014;0.035)	0.549 (0.54;0.558)	0.768 (0.511;1.025)	0.049 (0.023;0.075)
UKPDS 68 C-HF	absent	0.643 (0.64;0.647)	0.934 (0.898;0.97)	-0.004 (-0.018;0.009)	0.675 (0.672;0.679)	0.949 (0.921;0.978)	0.004 (-0.009;0.017)
	present	0.507 (0.499;0.514)	0.361 (-0.138;0.859)	0.012 (-0.012;0.036)	0.542 (0.534;0.55)	0.883 (0.676;1.09)	0.049 (0.023;0.074)
UKPDS 68 Stroke	absent	0.643 (0.64;0.647)	0.934 (0.898;0.97)	-0.004 (-0.018;0.009)	0.675 (0.672;0.679)	0.949 (0.921;0.978)	0.004 (-0.009;0.017)
	present	0.507 (0.499;0.514)	0.361 (-0.138;0.859)	0.012 (-0.012;0.036)	0.542 (0.534;0.55)	0.883 (0.676;1.09)	0.049 (0.023;0.074)
UKPDS 82 C-HF	absent	0.632 (0.627;0.637)	0.91 (0.861;0.958)	-0.006 (-0.019;0.008)	0.663 (0.659;0.667)	0.943 (0.9;0.986)	0.002 (-0.011;0.015)
	present	0.504 (0.496;0.511)	0.303 (-0.267;0.874)	0.012 (-0.012;0.037)	0.539 (0.531;0.547)	0.874 (0.589;1.158)	0.049 (0.023;0.074)
UKPDS 82 CHD	absent	0.618 (0.613;0.623)	0.958 (0.917;0.999)	-0.006 (-0.02;0.008)	0.641 (0.637;0.646)	0.98 (0.951;1.009)	0.002 (-0.011;0.014)
	present	0.54 (0.533;0.548)	1.043 (0.782;1.305)	0.016 (-0.009;0.04)	0.5 (0.492;0.508)	0.056 (-2.083;2.194)	0.052 (0.027;0.078)

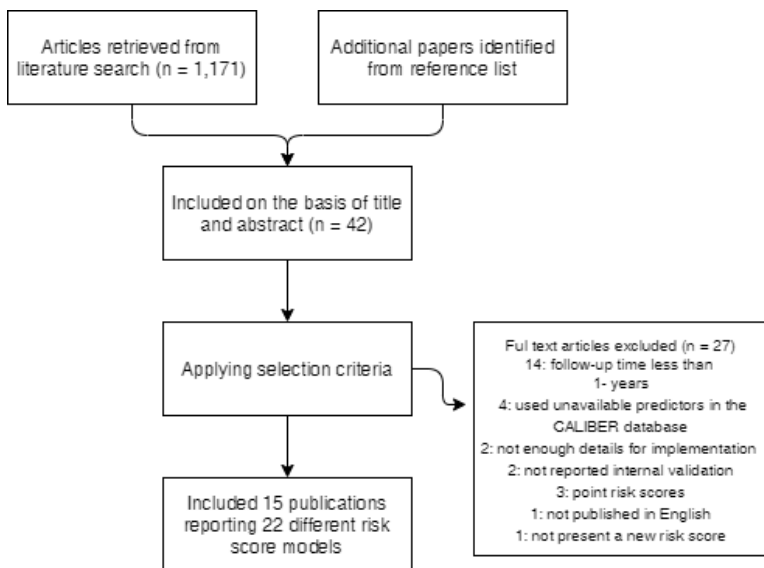
Appendix Figure 16 Discrimination (c-statistic) for all included risk scores against CVD outcome for the imputed dataset stratified by gender (men vs women), statins (statin naïve vs statin users), CVD history at the baseline (absent vs present), and age subgroups.



Appendix Figure 17 Discrimination (c-statistic) for all included risk scores against CVD + AF + HF outcome for the imputed dataset stratified by gender (men vs women), statins (statin naïve vs statin users), CVD history at the baseline (absent vs present), and age subgroups.



Appendix Figure 18 Flow diagram of selected articles



Appendix Reference List

- 1 Chamnan P, Simmons RK, Sharp SJ, Griffin SJ, Wareham NJ. Cardiovascular risk assessment scores for people with diabetes: a systematic review. *Diabetologia* 2009; **52**: 2001–14.
- 2 Read SH, van Diepen M, Colhoun HM, *et al.* Performance of Cardiovascular Disease Risk Scores in People Diagnosed With Type 2 Diabetes: External Validation Using Data From the National Scottish Diabetes Register. *Diabetes Care* 2018; **41**: 2010–8.
- 3 van der Leeuw J, van Dieren S, Beulens JWJ, *et al.* The validation of cardiovascular risk scores for patients with type 2 diabetes mellitus. *Heart Br Card Soc* 2015; **101**: 222–9.
- 4 Vartiainen E, Laatikainen T, Peltonen M, Puska P. Predicting Coronary Heart Disease and Stroke: The FINRISK Calculator. *Glob Heart* 2016; **11**: 213–6.
- 5 Donnan PT, Donnelly L, New JP, Morris AD. Derivation and validation of a prediction score for major coronary heart disease events in a U.K. type 2 diabetic population. *Diabetes Care* 2006; **29**: 1231–6.
- 6 Anderson KM, Odell PM, Wilson PW, Kannel WB. Cardiovascular disease risk profiles. *Am Heart J* 1991; **121**: 293–8.
- 7 Prediction of Coronary Heart Disease Using Risk Factor Categories | Circulation. <https://www.ahajournals.org/doi/full/10.1161/01.cir.97.18.1837> (accessed March 10, 2020).
- 8 Hippisley-Cox J, Coupland C, Vinogradova Y, *et al.* Predicting cardiovascular risk in England and Wales: prospective derivation and validation of QRISK2. *BMJ* 2008; **336**: 1475–82.
- 9 Development and validation of QRISK3 risk prediction algorithms to estimate future risk of cardiovascular disease: prospective cohort study | The BMJ. <https://www.bmj.com/content/357/bmj.j2099> (accessed March 10, 2020).
- 10 Estimation of ten-year risk of fatal cardiovascular disease in Europe: the SCORE project | European Heart Journal | Oxford Academic. <https://academic.oup.com/eurheartj/article/24/11/987/427645> (accessed March 10, 2020).
- 11 Stevens RJ, Kothari V, Adler AI, Stratton IM, United Kingdom Prospective Diabetes Study (UKPDS) Group. The UKPDS risk engine: a model for the risk of coronary heart disease in Type II diabetes (UKPDS 56). *Clin Sci Lond Engl* 1979 2001; **101**: 671–9.
- 12 Clarke PM, Gray AM, Briggs A, *et al.* A model to estimate the lifetime health outcomes of patients with type 2 diabetes: the United Kingdom Prospective Diabetes Study (UKPDS) Outcomes Model (UKPDS no. 68). *Diabetologia* 2004; **47**: 1747–59.
- 13 Hayes AJ, Leal J, Gray AM, Holman RR, Clarke PM. UKPDS outcomes model 2: a new version of a model to simulate lifetime health outcomes of patients with type 2 diabetes mellitus using data from the 30 year United Kingdom Prospective Diabetes Study: UKPDS 82. *Diabetologia* 2013; **56**: 1925–33.
- 14 Goff DC, Lloyd-Jones DM, Bennett G, *et al.* 2013 ACC/AHA guideline on the assessment of cardiovascular risk: a report of the American College of Cardiology/American Heart Association Task Force on Practice Guidelines. *Circulation* 2014; **129**: S49-73.

- 15 Basu S, Sussman JB, Berkowitz SA, Hayward RA, Yudkin JS. Development and validation of Risk Equations for Complications Of type 2 Diabetes (RECODe) using individual participant data from randomised trials. *Lancet Diabetes Endocrinol* 2017; **5**: 788–98.
- 16 Ridker PM, Paynter NP, Rifai N, Gaziano JM, Cook NR. C-Reactive Protein and Parental History Improve Global Cardiovascular Risk Prediction: The Reynolds Risk Score for Men. *Circulation* 2008; **118**: 2243–51.
- 17 Ridker PM, Buring JE, Rifai N, Cook NR. Development and validation of improved algorithms for the assessment of global cardiovascular risk in women: the Reynolds Risk Score. *JAMA* 2007; **297**: 611–9.
- 18 Mukamal KJ, Kizer JR, Djoussé L, *et al*. Prediction and classification of cardiovascular disease risk in older adults with diabetes. *Diabetologia* 2013; **56**: 275–83.
- 19 Holtz Y. Upset plot. <https://www.r-graph-gallery.com/upset-plot.html> (accessed March 29, 2020).