

1 Title

2 Exclusion of bacterial co-infection in COVID-19 using baseline inflammatory markers and their response to
3 antibiotics

4 Authors

5 Claire Y Mason¹, Tanmay Kanitkar¹, Charlotte J Richardson¹, Marisa Lanzman², Zak Stone², Tabitha Mahungu¹,
6 Damien Mack¹, Emmanuel Q Wey^{1,4}, Lucy Lamb^{1,3}, Indran Balakrishnan¹, Gabriele Pollara^{1,4}

7 ¹ Department of Infection, Royal Free London NHS Trust, UK

8 ² Department of Pharmacy, Royal Free London NHS Trust, UK

9 ³ Academic Department of Defence Medicine, Royal Centre for Defence Medicine, Birmingham, UK

10 ⁴ Division of Infection & Immunity, University College London, UK

11 Corresponding author

12 Dr Gabriele Pollara, Division of Infection & Immunity, University College London, UK. Email:
13 g.pollara@ucl.ac.uk

14 Keywords

15 COVID-19, WCC, CRP, inflammation, antibiotics, stewardship

16 Running title

17 Inflammatory markers in COVID-19

18 Word Count

19 2998 words

20 Abstract

21 Background

22 COVID-19 is infrequently complicated by secondary bacterial infection, but nevertheless antibiotic
23 prescriptions are common. We used community-acquired pneumonia (CAP) as a benchmark to define the
24 processes that occur in a bacterial pulmonary infection, and tested the hypothesis that baseline inflammatory
25 markers and their response to antibiotic therapy could distinguish CAP from COVID-19.

26 Methods

27 In patients admitted to Royal Free Hospital (RFH) and Barnet Hospital (BH) we defined CAP by lobar
28 consolidation on chest radiograph, and COVID-19 by SARS-CoV-2 detection by PCR. Data were derived from
29 routine laboratory investigations.

30 Results

31 On admission all CAP and >90% COVID-19 patients received antibiotics. We identified 106 CAP and 619 COVID-
32 19 patients at RFH. CAP was characterised by elevated white cell count (WCC) and C-reactive protein (CRP)
33 compared to COVID-19 (median WCC 12.48 (IQR 8.2-15.3) vs 6.78 (IQR 5.2-9.5) $\times 10^6$ cells/ml and median CRP
34 CRP 133.5 (IQR 65-221) vs 86 (IQR 42-160) mg/L). Blood samples collected 48-72 hours into admission revealed
35 decreasing CRP in CAP but not COVID-19 (CRP difference -33 (IQR -112 to +3.5) vs +15 (IQR -15 to +70) mg/L
36 respectively). In the independent validation cohort (BH) consisting of 169 CAP and 181 COVID-19 patients,
37 admission WCC $>8.2 \times 10^6$ cells/ml or falling CRP during admission identified 95% of CAP cases, and predicted
38 the absence of bacterial co-infection in 45% of COVID-19 patients.

39 Conclusions

40 We propose that in COVID-19 the absence of both elevated baseline WCC and antibiotic-related decrease in
41 CRP can exclude bacterial co-infection and facilitate antibiotic stewardship efforts.

42

43 Introduction

44 The COVID-19 pandemic caused by the novel beta coronavirus SARS-CoV-2 has caused over 34 million
45 infections and over 1 million deaths worldwide [1]. The drivers of pathology remain to be elucidated, but a
46 hyperinflammatory response is associated with worse case fatality [2]. Other viral respiratory tract infections,
47 best characterised by influenza, can be complicated by bacterial co-infections that also raise inflammatory
48 markers and are associated with high mortality [3,4], but distinguishing severe viral pneumonia from bacterial
49 co-infection is challenging [5]. In COVID-19, several studies have found bacterial co-infection to be rare, as
50 determined by identification of causative pathogens [6–9]. However, routine microbiological culture takes
51 several days, lacks sensitivity [10] and does not readily distinguish bacterial colonisation from infection.
52 Moreover, microbiological respiratory tract sampling is not routinely performed in patients admitted with
53 COVID-19 [9]. Therefore, despite guidance aimed at rationalising antibiotic use [11], it is unsurprising that
54 diverse and elevated rates of antibiotic prescriptions have been reported in patients admitted for COVID-19
55 infection [8,9].

56 It is likely that many COVID-19 associated antibiotic prescriptions are given in the absence of bacterial co-
57 infection, thus hampering antimicrobial stewardship efforts and potentially increasing antimicrobial resistance
58 [12–14]. Many studies have focused on clinical and laboratory features that risk stratify outcome in COVID-19
59 [15–18], but currently infections caused by virus alone cannot be readily distinguished from those with a
60 bacterial component. C-reactive protein (CRP), white cell count (WCC) and procalcitonin (PCT) have been used
61 to distinguish between influenza and bacterial pneumonia, allowing antibiotic treatment to be omitted or
62 stopped [19–22]. Serial measurements of inflammatory markers may also assist in distinguishing bacterial
63 from viral infections [23,24]. A small retrospective study comparing COVID-19 to community-acquired
64 pneumonia patients identified differences in admission neutrophil counts, D-dimers and CRP, but did not
65 provide a rigorous definition for the pneumonia cases, nor explored changes in these markers over time [25].

66 In this study we aimed to identify features that discriminated viral COVID-19 infections from those complicated
67 by bacterial co-infection. We used community-acquired pneumonia (CAP) as a benchmark to define the
68 processes that occur in bacterial pulmonary infections, and tested the hypothesis that baseline inflammatory
69 markers and their response to antibiotics could distinguish CAP from most COVID-19 infections. To address
70 this research question, we performed a retrospective, cohort study from a large split-site academic hospital in
71 the UK. We used the independent nature of the two sites to discover and validate our findings, extending their
72 generalisability.

73 Methods

74 Data extraction and ethics

75 Anonymised demographics, antimicrobial prescriptions, haematological and biochemical investigations were
76 extracted from the Clinical Practice Group analysis team, Cerner Electronic Patient Records and the electronic
77 Clinical Infection Database (eICID), and microbiological investigations from WinPath at Royal Free London (RFL)
78 NHS Trust [26]. The study was approved by the Research and Innovation Group at RFL NHS Trust, which stated
79 that confidential patient information could be used under COVID-19 COPI notice made by Department of
80 Health and Social Care, and that as this was a retrospective review of routine clinical data, formal ethical
81 approval was not required.

82 Patient selection

83 We identified patients from 2 hospital sites of RFL NHS Trust in London, UK: Royal Free Hospital (RFH) and
84 Barnet Hospital (BH). These hospitals are separated by 11 kilometres and patient care is delivered by non-
85 overlapping clinical staff, using non-identical clinical care bundles and antibiotic policies. We included patients
86 aged >18 years old admitted to hospital, of which a subset was admitted for >48 hours (tables 1 & 4), and
87 excluded patients with haematological malignancies. We defined COVID-19 and influenza patients by RT-PCR
88 detection of SARS-CoV-2 and influenza A or B viruses respectively from nasopharyngeal swabs. COVID-19
89 patients were identified between 1st March and 31st May 2020, and influenza patients between 1st January
90 and 31st May 2019. These criteria yielded 619 and 181 COVID-19 patients from RFH and BH respectively, and
91 188 and 162 influenza patients from RFH and BH respectively. There were no patients co-infected with SARS-
92 CoV-2 and influenza viruses. CAP patients were identified by a clinical diagnosis of CAP made between 1st
93 January and 31st May 2019 with focal consolidation on chest radiograph reported by consultant radiologists
94 (106 patients at RFH and 169 at BH).

95 For some analyses, we excluded COVID-19 patients with radiological or microbiological evidence of ongoing
96 bacterial co-infection. This was defined by presence of lobar pneumonia on a chest radiograph within 72 hours
97 of hospital admission, or by a non-contaminant bacterial growth on blood culture, growth in sputum samples
98 of *Streptococcus pneumoniae*, *Staphylococcus aureus* or *Moraxella catarrhalis*, detection of *Mycoplasma*
99 *pneumoniae* by PCR from sputum or detection of *Streptococcus pneumoniae* antigen in urine (tables 1 & 3 and
100 table S1).

101 Statistical analysis

102 Baseline demographics were compared by Mann-Whitney test (age), Fisher's exact test (gender) or Chi-square
103 test (ethnicity, Charlson co-morbidities and microbiological results). Continuous variables from blood tests
104 were expressed as median and interquartile range (IQR), and patient groups were compared using the non-

105 parametric two-tailed Mann-Whitney U test. A multivariate logistic regression model was used to determine
106 factors that discriminated between CAP and COVID-19. The diagnosis of CAP was the categorical output
107 variable, and blood tests were used as continuous dependent variables in the model, which generated
108 Receiver Operating Characteristic curves (ROC) and areas under the curve (AUC) as a summary statistic. For
109 pre-determined cut-offs, we also calculated sensitivity, specificity, positive and negative predictive values, and
110 positive and negative likelihood ratios. All analyses were performed using Microsoft Excel and GraphPad Prism
111 version 8.

112

113 Results

114 Defining the discovery cohort

115 We identified 107 CAP, 620 COVID-19 and 188 influenza patients at RFH. 2 patients were excluded due to
116 haematological malignancy. Male gender was overrepresented in COVID-19 (62% in COVID-19 vs 47% and 52%
117 in CAP and influenza respectively), whereas CAP patients were older (median age 72, 68 and 56 in CAP, COVID-
118 19 and influenza respectively). The proportion of Black, Asian, Mixed and Other (non-white) ethnicity patients
119 was higher in COVID-19 compared to CAP and patients with CAP had more comorbidities and identified
120 bacteria in routine microbiological investigations more commonly (table 1).

121 Distinguishing pneumonia from COVID-19

122 We tested the hypothesis that inflammatory markers could discriminate CAP from COVID-19 or influenza by
123 comparing total WCC, its differential cell counts and CRP levels on the day of admission to hospital. Compared
124 to CAP, COVID-19 was associated with significantly lower median WCC (12.48 vs $6.78 \times 10^6/\text{ml}$) and neutrophils
125 (9.98 vs $5.37 \times 10^6/\text{ml}$ (fig 1)). Influenza was also characterised by significantly lower median WCC ($7.28 \times 10^6/\text{ml}$)
126 and neutrophils (median $5.10 \times 10^6/\text{ml}$) than pneumonia (fig 1). Lymphocyte counts did not differ between the
127 groups. CRP was also significantly higher in CAP than in COVID-19, and lower in influenza (median CRP 133.5,
128 86.0 and 31mg/L respectively) (fig 1).

129 All CAP patients were prescribed antibiotics on admission and in two independent surveys of COVID-19
130 patients from RFH, 95/100 (95%) and 104/118 (88%) were prescribed antibiotics to treat a presumptive
131 superadded pulmonary bacterial infection. We hypothesised that CAP and viral infections could be further
132 discriminated by changes in inflammatory markers following initiation of antibiotics [23]. In the RFH cohort,
133 53 (50%) CAP, 331 (53%) COVID-19 and 53 (28%) influenza patients were admitted for >48 hours and had a
134 blood sample collected as part of routine clinical care 48-72 hours into admission (table 1). Differences in
135 inflammatory markers on admission within this subset mirrored that seen in the wider cohort (fig S1). At this
136 later time point, CAP was still characterised by elevated median WCC (9.5 vs $7.01 \times 10^6/\text{ml}$), but this difference

Mason et al - Inflammatory markers in COVID-19

137 was diminished compared to admission (fig S2). Moreover, the difference in CRP between CAP and COVID-19
138 was no longer evident (median CRP 107.5 vs 127.0mg/L) (fig S2). These changes were driven by a greater fall
139 in WCC and CRP for CAP compared to COVID-19 (Δ WCC -2.32 vs -0.17x10⁶/ml and Δ CRP -33 vs +15mg/L
140 respectively) (fig 2).

141 *Contribution of multiple variables to discriminate pneumonia from COVID-19*

142 Our data suggested that elevated WCC and CRP, as well as a reduction in these parameters at 48-72 hours
143 could discriminate between COVID-19 and CAP. To test this hypothesis, we applied a logistic regression model
144 to the data collected from these two patient groups. We used the diagnosis of CAP as the binary outcome
145 variable and observed that WCC or Δ CRP measurements alone yielded the greatest diagnostic accuracy (fig 3
146 & table 2). The maximal AUC obtained from this analysis was 0.75 (C.I. 0.68-0.83), demonstrating the trade off
147 in sensitivity and specificity when using these variables alone. We also tested whether their combined use
148 would improve the diagnostic accuracy of the model, and observed some improvement in discriminating
149 between CAP from COVID-19 (AUC 0.80, C.I. 0.73-0.87), with no added benefit to also including Δ WCC
150 measurements (fig 3 & table 2).

151 We considered whether the ability of WCC and Δ CRP to discriminate between COVID-19 and CAP was
152 confounded by admission to intensive care unit (ICU). At RFH, 79/331 (23.9%) of COVID-19 patients included
153 in the logistic regression model were admitted to ICU within 72 hours of their admission (table 1). Excluding
154 this subset of patients did not affect the discriminatory power of the model (AUC 0.81, C.I. 0.74-0.88) (table
155 2). We also considered whether COVID-19 patients with microbiological or radiological evidence of a bacterial
156 infection could have confounded discrimination from pneumonia. We identified 16 (4.8%) COVID-19 patients
157 included in the logistic regression model with microbiological results consistent with an active bacterial
158 process (sputum culture positivity with a respiratory pathogen or a non-contaminant bacterial growth in blood
159 cultures (table 1)), and 2 (0.1%) further COVID-19 patients with lobar pneumonia on chest radiograph (table
160 1). Excluding these 18 patients did not alter the differences observed in admission WCC or Δ CRP between CAP
161 and COVID-19 (data not shown), and did not affect the classification accuracy of the remaining patients in the
162 logistic regression model (table 2).

163 *Decision making criteria to discriminate bacterial pneumonia and COVID-19*

164 We sought to convert our observations into practical decision-making criteria for clinical practice. We
165 generated a series of cut-offs in the variables with greatest discriminatory power between CAP and COVID-19
166 (admission WCC and Δ CRP), and explored the trade off in sensitivity and specificity generated by these alone
167 or in combination (table 3). For cut offs of WCC we used the lower quartile value of the CAP cohort
168 (>8.2x10⁶/ml) and the upper quartile value of the COVID-19 cohort (>9.5x10⁶/ml). For cut offs of Δ CRP we used
169 the lower quartile of the COVID-19 cohort (<-15mg/l) and the upper quartile of the CAP cohort (<3.5mg/l),

170 rounded to 0mg/L for simplicity This revealed that using CAP-derived quartile cut-offs yielded greater
171 sensitivity, at the expense of specificity. The lower prevalence of CAP in this cohort compared to COVID-19
172 offered a high negative predictive value (>90%). Requiring both a $WCC > 8.2 \times 10^6 / \text{ml}$ and $\Delta\text{CRP} < 0$ improved
173 specificity, at the expense of sensitivity. However, as such a strategy would result in many cases of CAP being
174 missed, we also explored using the presence of either parameter to define CAP, yielding a sensitivity of >90%.
175 Although the specificity of this approach was only 43%, the absence of both admission $WCC > 8.2 \times 10^6 / \text{ml}$ and
176 $\Delta\text{CRP} < 0$ could still exclude CAP, and by extension bacterial co-infection alongside COVID-19, promoting
177 antibiotic cessation in 142 / 331 (43%) COVID-19 patients from this cohort (table 3).

178 Independent cohort validation

179 To demonstrate reproducibility of our findings, we used independent patient cohorts from a separate hospital,
180 BH, consisting of 169 CAP, 181 COVID-19 and 162 influenza A/B patients. To ensure comparability to the RFH
181 cohort, the patients were identified over the same time periods using identical criteria. Baseline demographic
182 analyses were comparable to those in the RFH cohort (table 4), and 99 (59%), 60 (33%) and 47 (29%) of CAP,
183 COVID-19 and influenza patients respectively were admitted for >48 hours and had a blood sample collected
184 as part of routine clinical care 48-72 hours into admission (table 4).

185 Differences in inflammatory markers within the BH cohort reflected those observed at RFH, with admission
186 WCC and CRP levels being higher in CAP compared to COVID-19 and accompanied by a reduction following 48-
187 72 hours of admission not observed in COVID-19 (fig S3). Applying these parameters into a logistic regression
188 model demonstrated similar discriminatory power of each variable to that seen in RFH patients, and once
189 more an optimal AUC (0.84, C.I. 0.78-0.91) was derived when both admission WCC and ΔCRP were included
190 as variables in the model (table 5). We explored the exclusion of COVID-19 patients included in the logistic
191 regression model that either attended ICU within 72 hours of hospital admission (21/60, 35.0%) or
192 demonstrated microbiological or radiological evidence pneumonia (4/60, 6.7%) (table 5). However, as seen in
193 the RFH cohort, excluding either subset of patients did not significantly affect the discriminatory ability of the
194 logistic regression model (table 5).

195 Finally, we applied the cut-offs independently derived from the RFH cohort on BH patient data, and observed
196 a similar trade-off between sensitivity and specificity. Using either admission $WCC > 8.2 \times 10^6 / \text{ml}$ or $\Delta\text{CRP} < 0$
197 yielded a CAP sensitivity approaching 95% and negative predictive value of 84% (table 6). Despite the low
198 specificity resulting from these cut-offs, this would still have excluded CAP in 26/56 (46.4%) of COVID-19
199 patients with no microbiological or radiological evidence of pneumonia and admitted for >48hours. 55 (98%)
200 of these patients were prescribed a 5-day course of antibiotics on admission (203 antibiotic days in total).
201 Stopping antibiotic prescriptions 48 hours into admission in the 26 patients that did not meet either diagnostic

202 criterium for CAP would have saved 51 antibiotic days overall, a 25% reduction in total antibiotic prescriptions
203 in the BH COVID-19 cohort.

204 Discussion

205 Elevated inflammatory responses, high case fatality and bacterial co-infections observed in influenza
206 contribute to frequent antibiotic prescriptions in COVID-19 [2,4,9,27]. However, radiological findings in COVID-
207 19 are heterogenous [28] and microbiological investigations rarely identify pathogenic bacteria [6–9],
208 precluding reliable identification of co-infection. Therefore, novel approaches to exclude bacterial co-infection
209 in COVID-19 are a research priority to facilitate antimicrobial stewardship efforts [14,29,30].

210 We used patients admitted with CAP prior to the COVID-19 pandemic as a benchmark to define the processes
211 that occur in bacterial pulmonary infections, including bacterial co-infection in COVID-19. This demonstrated
212 that admission WCC (predominantly neutrophils), and CRP can discriminate CAP from both COVID-19 and
213 influenza A/B at a population level. Moreover, WCC and CRP decreased following antibiotic therapy in
214 pneumonia, but not in viral infections. We used these observations to construct a model and decision-making
215 criteria to assist with excluding bacterial co-infection in many cases of COVID-19. We propose that the absence
216 of both admission WCC $>8.2 \times 10^6/\text{ml}$ and a fall in CRP would support stopping antibiotics in almost 50% of
217 COVID-19 patients during their admission, reducing total antibiotic prescriptions in this population by up to
218 25%. This approach would exceed most antimicrobial stewardship achievements [29,30], and reduce selection
219 for antibiotic resistant bacteria during this pandemic [12,14].

220 The combination of selected cut-offs yielded the greatest sensitivity for CAP, ensuring ongoing antibiotic
221 treatment where needed, but came at the expense of specificity. Therefore, these criteria remain permissive
222 to excessive antibiotic prescribing in COVID-19, particularly on admission to hospital. PCT can discriminate
223 bacterial from some viral respiratory tract infections [21,22], but has not been systematically compared
224 between bacterial pneumonia and COVID-19. Unfortunately, we could not investigate PCT as it was not
225 measured routinely in our CAP cohorts. Future studies should also assess, alongside admission WCC and ΔCRP ,
226 the discriminatory capacity of PCT, D-dimers [9,22,31], and other novel biomarkers, such as transcriptional
227 signatures that quantify inflammatory cytokine activity [32] or those that discriminate bacterial from viral
228 infections [33].

229 The large, standardised populations studied, use of routinely available clinical investigations, and the
230 reproducibility of our findings in an independent validation cohort population are key strengths of our study.
231 We were also able to convert population level findings into practical diagnostic criteria that can be used in
232 generalised clinical settings. The cut-offs used were derived from a separate population in which they were
233 tested, adding scientific validity to our conclusions, but does not negate individual care providers determining

234 the distribution of admission WCC in their own cases of CAP to define institution-specific IQR cut-offs. In
235 addition, our criteria should not be considered in isolation from clinical decision making. Clinical improvement,
236 reduced supplemental oxygen requirement, and the absence of consolidation on chest radiograph in COVID-
237 19 patients may all contribute to excluding bacterial co-infection and could be used alongside the WCC and
238 Δ CRP criteria to support cessation of antibiotics.

239 Our study has some notable limitations. First, the populations were identified at non-overlapping times, due
240 to the disproportionate prevalence of COVID-19 cases in 2020. We attempted to mitigate for the enforced use
241 of historical pneumonia and influenza comparator groups by identifying these patients over the same months
242 of 2019 as COVID-19 cases in 2020. We also did not collect clinical severity or outcome data for the patients,
243 and thus we cannot measure a direct impact on prognosis. Second, we used a radiological, but not
244 microbiological, definition of pneumonia, and although standardised, it is possible that some pneumonia cases
245 had non-bacterial aetiology. Third, we inferred that bacterial co-infection in COVID-19 shares pathophysiology
246 and inflammatory marker responses with CAP in the absence of COVID-19. This hypothesis remains untested
247 but is supported by the divergent inflammatory marker responses observed between most COVID-19 and CAP
248 patients. Fourth, we did not include suspected COVID-19 patients with negative SARS-CoV-2 results, therefore
249 our findings may not be applicable to this cohort. Finally, we focused on patient assessments made within 72
250 hours of admission, and thus our decision-making tools are not applicable to patients discharged before this
251 time or those with prolonged hospital admissions.

252 In conclusion, we demonstrate that routine clinical parameters, admission WCC and changes in CRP following
253 antibiotic administration, can be translated into a set of diagnostic criteria that can exclude bacterial co-
254 infection in up to half of COVID-19 patients. The routine nature of the investigations required mean that, even
255 in the context of a pandemic, this approach can form the basis of protocols to assist reductions in unnecessary
256 antibiotic prescriptions for viral infections, minimising drug-associated adverse effects and reducing
257 development of antimicrobial resistance.

258 [Acknowledgements](#)

259 We wish to thank members of the RFL Clinical Practice Group for prompt extraction of clinical records.

260

261 [Funding](#)

262 This work was supported by a National Institute for Health Research (NIHR) Clinical Lectureship to GP.

263

264 References

- 265 1. European Centre for Disease Prevention and Control. COVID-19 pandemic: situation update. Available
266 at: <https://www.ecdc.europa.eu/en/covid-19-pandemic>. Accessed 7 October 2020.
- 267 2. Manson JJ, Crooks C, Naja M, et al. COVID-19-associated hyperinflammation and escalation of patient
268 care: a retrospective longitudinal cohort study. *Lancet Rheumatol* **2020**; 0. Available at:
269 <https://linkinghub.elsevier.com/retrieve/pii/S2665991320302757>. Accessed 27 August 2020.
- 270 3. MacIntyre CR, Chughtai AA, Barnes M, et al. The role of pneumonia and secondary bacterial infection
271 in fatal and serious outcomes of pandemic influenza a(H1N1)pdm09 11 Medical and Health Sciences
272 1103 Clinical Sciences 11 Medical and Health Sciences 1117 Public Health and Health Services. *BMC*
273 *Infect Dis* **2018**; 18:637. Available at:
274 <https://bmcinfectdis.biomedcentral.com/articles/10.1186/s12879-018-3548-0>. Accessed 16 July 2020.
- 275 4. Morens DM, Taubenberger JK, Fauci AS. Predominant Role of Bacterial Pneumonia as a Cause of Death
276 in Pandemic Influenza: Implications for Pandemic Influenza Preparedness. *J Infect Dis* **2008**; 198:962–
277 970. Available at: [/pmc/articles/PMC2599911/?report=abstract](https://pubmed.ncbi.nlm.nih.gov/17111111/). Accessed 16 July 2020.
- 278 5. Zhou F, Yu T, Du R, et al. Clinical course and risk factors for mortality of adult inpatients with COVID-19
279 in Wuhan, China: a retrospective cohort study. *Lancet* **2020**; 395:1054–1062. Available at:
280 <https://doi.org/10.1016/>. Accessed 16 July 2020.
- 281 6. Hughes S, Troise O, Donaldson H, Mughal N, Moore LS. Bacterial and fungal coinfection among
282 hospitalised patients with COVID-19: A retrospective cohort study in a UK secondary care setting. *Clin*
283 *Microbiol Infect* **2020**; Available at: [/pmc/articles/PMC7320692/?report=abstract](https://pubmed.ncbi.nlm.nih.gov/32820807/). Accessed 10 July
284 2020.
- 285 7. Lehmann CJ, Pho MT, Pitrak D, Ridgway JP, Pettit NN. Community Acquired Co-infection in COVID-19:
286 A Retrospective Observational Experience. *Clin Infect Dis* **2020**; Available at:
287 <https://academic.oup.com/cid/advance-article/doi/10.1093/cid/ciaa902/5865452>. Accessed 10 July
288 2020.
- 289 8. Rawson TM, Moore LSP, Zhu N, et al. Bacterial and Fungal Coinfection in Individuals With Coronavirus:
290 A Rapid Review To Support COVID-19 Antimicrobial Prescribing. *Clin Infect Dis* **2020**;
- 291 9. Vaughn VM, Gandhi T, Petty LA, et al. Empiric Antibacterial Therapy and Community-onset Bacterial
292 Co-infection in Patients Hospitalized with COVID-19: A Multi-Hospital Cohort Study. *Clin Infect Dis* **2020**;
293 Available at: <http://www.ncbi.nlm.nih.gov/pubmed/32820807>. Accessed 27 August 2020.
- 294 10. García-Vázquez E, Marcos MA, Mensa J, et al. Assessment of the usefulness of sputum culture for
295 diagnosis of community-acquired pneumonia using the PORT predictive scoring system. *Arch Intern*
296 *Med* **2004**; 164:1807–1811. Available at: <https://pubmed.ncbi.nlm.nih.gov/15364677/>. Accessed 17
297 September 2020.
- 298 11. 4 Managing suspected or confirmed pneumonia | COVID-19 rapid guideline: managing suspected or
299 confirmed pneumonia in adults in the community | Guidance | NICE.
- 300 12. Nieuwlaat R, Mbuagbaw L, Mertz D, et al. COVID-19 and Antimicrobial Resistance: Parallel and
301 Interacting Health Emergencies. *Clin Infect Dis* Available at: [https://academic.oup.com/cid/advance-](https://academic.oup.com/cid/advance-article/doi/10.1093/cid/ciaa773/5858203)
302 [article/doi/10.1093/cid/ciaa773/5858203](https://academic.oup.com/cid/advance-article/doi/10.1093/cid/ciaa773/5858203). Accessed 1 October 2020.
- 303 13. Rawson TM, Moore LSP, Castro-Sanchez E, et al. COVID-19 and the potential long-term impact on
304 antimicrobial resistance. *J Antimicrob Chemother* **2020**; 75:1681–1684. Available at:
305 <https://academic.oup.com/jac/article/75/7/1681/5841159>. Accessed 17 September 2020.
- 306 14. Rawson TM, Wilson RC, Holmes A. Understanding the role of bacterial and fungal infection in COVID-

- 307 19. Clin Microbiol Infect **2020**; 0. Available at: <http://www.ncbi.nlm.nih.gov/pubmed/32979569>.
308 Accessed 1 October 2020.
- 309 15. Knight SR, Ho A, Pius R, et al. Risk stratification of patients admitted to hospital with covid-19 using the
310 ISARIC WHO Clinical Characterisation Protocol: development and validation of the 4C Mortality Score.
311 BMJ **2020**; 370:22. Available at: <http://dx.doi.org/10.1136/bmj.m3339>. Accessed 17 September 2020.
- 312 16. Xiao L, Zhang W-F, Gong M, et al. Development and validation of the HNC-LL score for predicting the
313 severity of coronavirus disease 2019. EBioMedicine **2020**; 57:102880. Available at:
314 <https://linkinghub.elsevier.com/retrieve/pii/S2352396420302553>. Accessed 12 July 2020.
- 315 17. Liu F, Li L, Xu M Da, et al. Prognostic value of interleukin-6, C-reactive protein, and procalcitonin in
316 patients with COVID-19. J Clin Virol **2020**; 127. Available at:
317 <https://pubmed.ncbi.nlm.nih.gov/32344321/>. Accessed 9 July 2020.
- 318 18. Brill SE, Jarvis HC, Ozcan E, et al. COVID-19: a retrospective cohort study with focus on the over-80s and
319 hospital-onset disease. BMC Med **2020**; 18:194. Available at:
320 <https://bmcmecine.biomedcentral.com/articles/10.1186/s12916-020-01665-z>.
- 321 19. Ahn S, Kim WY, Kim S-H, et al. Role of procalcitonin and C-reactive protein in differentiation of mixed
322 bacterial infection from 2009 H1N1 viral pneumonia. Influenza Other Respi Viruses **2011**; 5:398–403.
323 Available at: <http://www.ncbi.nlm.nih.gov/pubmed/21668682>. Accessed 16 July 2020.
- 324 20. Wu MH, Lin CC, Huang SL, et al. Can procalcitonin tests aid in identifying bacterial infections associated
325 with influenza pneumonia? A systematic review and meta-analysis. Influenza Other Respi Viruses **2013**;
326 7:349–355. Available at: <https://pubmed.ncbi.nlm.nih.gov/22672284/>. Accessed 16 July 2020.
- 327 21. Cuquemelle E, Soulis F, Villers D, et al. Can procalcitonin help identify associated bacterial infection in
328 patients with severe influenza pneumonia? A multicentre study. Intensive Care Med **2011**; 37:796–800.
- 329 22. Pfister R, Kochanek M, Leygeber T, et al. Procalcitonin for diagnosis of bacterial pneumonia in critically
330 ill patients during 2009 H1N1 influenza pandemic: A prospective cohort study, systematic review and
331 individual patient data meta-analysis. Crit Care **2014**; 18. Available at:
332 <https://pubmed.ncbi.nlm.nih.gov/24612487/>. Accessed 16 July 2020.
- 333 23. Coelho LM, Salluh JI, Soares M, et al. Patterns of c-reactive protein RATIO response in severe
334 community-acquired pneumonia: a cohort study. Crit Care **2012**; 16:R53. Available at:
335 <http://ccforum.biomedcentral.com/articles/10.1186/cc11291>.
- 336 24. Coster D, Wasserman A, Fisher E, et al. Using the kinetics of C-reactive protein response to improve the
337 differential diagnosis between acute bacterial and viral infections. Infection **2020**; 48:241–248.
338 Available at: <http://link.springer.com/10.1007/s15010-019-01383-6>.
- 339 25. Yu B, Li X, Chen J, et al. Evaluation of variation in D-dimer levels among COVID-19 and bacterial
340 pneumonia: a retrospective analysis. J Thromb Thrombolysis **2020**; :1. Available at:
341 <http://link.springer.com/10.1007/s11239-020-02171-y>. Accessed 10 July 2020.
- 342 26. Marks M, Pollara G, Miller D, et al. eCID: An electronic Clinical Infection Database to support integrated
343 clinical services and research in infectious diseases. J Infect **2015**; 71:402–405. Available at:
344 <https://linkinghub.elsevier.com/retrieve/pii/S0163445315001000>.
- 345 27. Docherty AB, Harrison EM, Green CA, et al. Features of 20 133 UK patients in hospital with covid-19
346 using the ISARIC WHO Clinical Characterisation Protocol: Prospective observational cohort study. BMJ
347 **2020**; 369. Available at: </pmc/articles/PMC7243036/?report=abstract>. Accessed 17 September 2020.
- 348 28. Shi H, Han X, Jiang N, et al. Radiological findings from 81 patients with COVID-19 pneumonia in Wuhan,
349 China: a descriptive study. Lancet Infect Dis **2020**; 20:425–434. Available at:

Mason et al - Inflammatory markers in COVID-19

- 350 www.thelancet.com/infection. Accessed 17 September 2020.
- 351 29. Pollara G, Bali S, Marks M, Bates I, Collier S, Balakrishnan I. Time Efficiency Assessment of Antimicrobial
352 Stewardship Strategies. *Clin. Infect. Dis.* 2017; 64:1463–1464. Available at:
353 <https://academic.oup.com/cid/article/64/10/1463/3067634>. Accessed 1 October 2020.
- 354 30. Davey P, Marwick CA, Scott CL, et al. Interventions to improve antibiotic prescribing practices for
355 hospital inpatients. *Cochrane Database Syst. Rev.* 2017; 2017.
- 356 31. de Jong E, van Oers JA, Beishuizen A, et al. Efficacy and safety of procalcitonin guidance in reducing the
357 duration of antibiotic treatment in critically ill patients: A randomised, controlled, open-label trial.
358 *Lancet Infect Dis* **2016**; 16:819–827.
- 359 32. Bell LCK, Noursadeghi M, Pollara G. Transcriptional response modules characterise IL-1 and IL-6 activity
360 in COVID-19. *bioRxiv* **2020**; :2020.07.22.202275. Available at:
361 <http://biorxiv.org/content/early/2020/07/22/2020.07.22.202275.abstract>.
- 362 33. Sampson D, Yager TD, Fox B, et al. Blood transcriptomic discrimination of bacterial and viral infections
363 in the emergency department: A multi-cohort observational validation study. *BMC Med* **2020**; 18:185.
364 Available at: <https://bmcmmedicine.biomedcentral.com/articles/10.1186/s12916-020-01653-3>.
365 Accessed 17 September 2020.
- 366
- 367

368 Figure legends

369 **Figure 1** Admission blood samples for all patients admitted to RFH. Violin plots represent distribution of values
370 for CAP (n=106), COVID-19 (n=619) and influenza A/B (n=188) patients. Bold lines represent median values.
371 Dotted lines represent IQR values. **** indicates $p < 0.0001$ by Mann-Whitney test.

372 **Figure 2** Change in values between admission blood samples and those collected 48-72 hours into admission
373 at RFH. Violin plots represent distribution of difference (Δ) in investigation results between those collected on
374 hospital admission and 48-72 hours into admission in CAP (n=53), COVID-19 (n=331) and influenza A/B (n=53)
375 patients. Bold lines represent median values. Dotted lines represent IQR values. **** indicates $p < 0.0001$ by
376 Mann-Whitney test.

377 **Figure 3** Accuracy of blood parameters to diagnose CAP in RFH patients. Receiver operating curves generated
378 from logistic regression models that incorporate combinations of WCC on admission and difference (Δ) in CRP
379 between samples on admission and 48-72 hours into admission in order to discriminate RFH patients
380 diagnosed with CAP from those diagnosed with COVID-19.

Figure 1

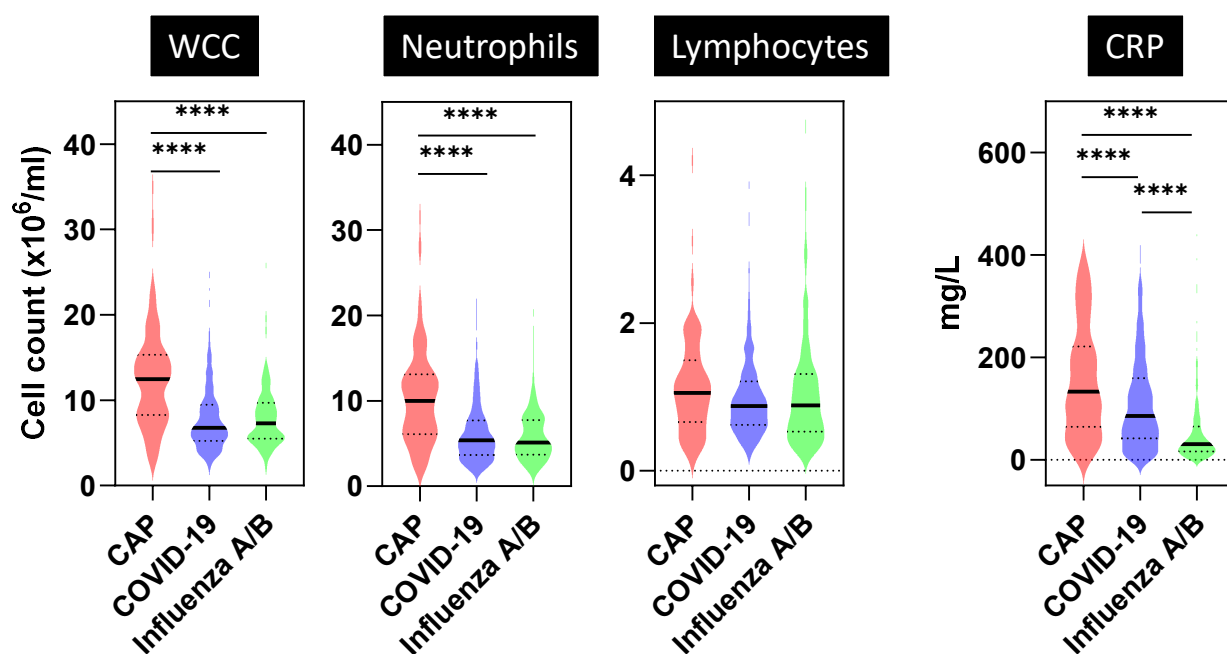


Figure 2

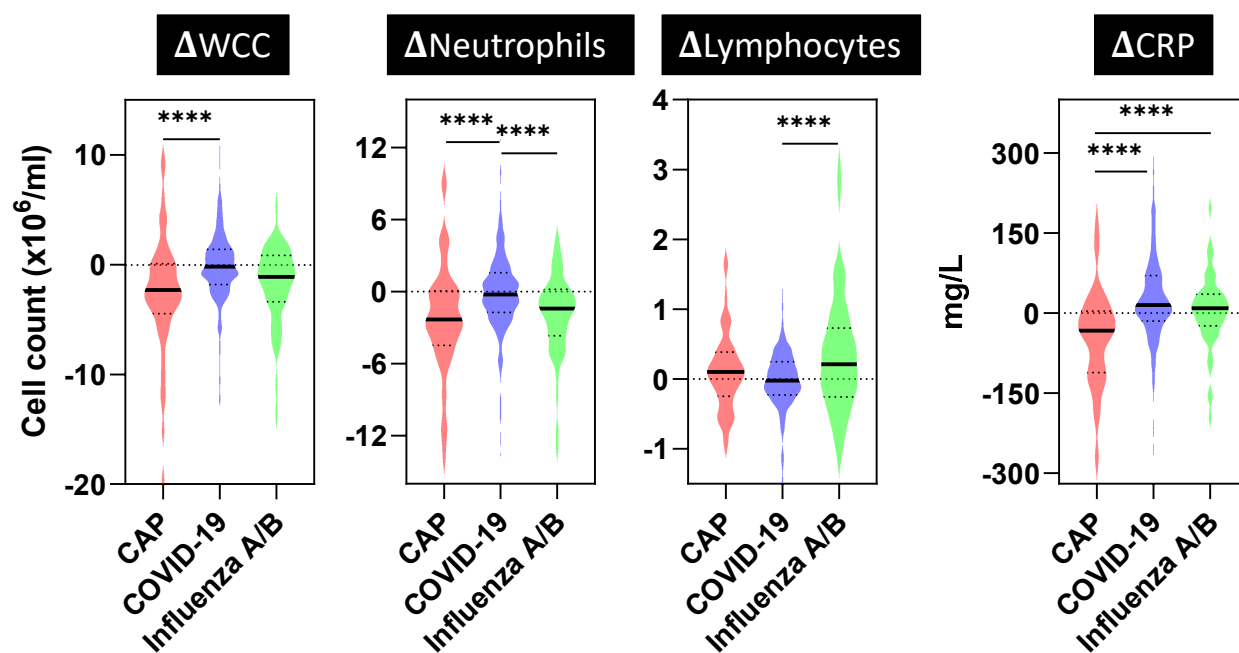
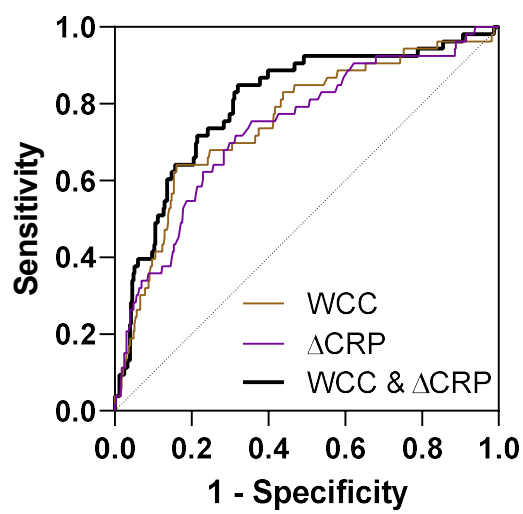


Figure 3



Diagnosis	CAP	COVID-19	Influenza	p value
Numbers	106	619	188	-
Chest radiograph	Lobar consolidation 106 (100%)	Lobar consolidation 5 (0.8) CVCX0: 62 (10.0) CVCX1: 281 (45.3) CVCX2: 136 (22.0) CVCX3: 17 (2.7) Ungraded: 123 (19.9)	-	-
Male, n (%)	50 (47)	386 (62)	98 (52)	0.0037
Age, median (range)	72 (19-99)	68 (18-100)	56 (18-95)	0.1401
Ethnicity, n (%)				0.0007
White	60 (57)	250 (40)	87 (46)	
Asian	23 (22)	83 (13)	31 (16)	
Black	6 (6)	69 (11)	13 (7)	
Mixed	2 (2)	7 (1)	3 (2)	
Other/ unknown	15 (14)	210 (34)	54 (29)	
Charlson index co-morbidities n (%)				<0.0001
0	18 (17)	243 (39)	86 (46)	
1	33 (31)	190 (31)	58 (31)	
2	28 (26)	109 (18)	26 (14)	
3+	27 (25)	77 (13)	18 (10)	
Positive microbiology results, n (%)				<0.0001
Sputum	5 (4.7)	3 (0.004)	4 (2.1)	
Blood	2 (1.9)	12 (1.9)	6 (3.2)	
Urine Ag	4 (3.8)	3 (0.004)	2 (1.1)	
Mycoplasma PCR	5 (4.7)	2 (0.003)	0 (0.0)	
Blood samples collected 48-72hr into admission, n (%)	53 (50.0)	331 (53.5)	53 (28.2)	

Table 1. Patients identified in each diagnostic group at RFH. Chest radiograph codes for COVID-19 patients based on British Society of Thoracic Imaging guidelines, CVCX0 = Normal, CVCX1 = Classic for COVID-19, CVCX2 = Indeterminate for COVID-19, CVCX3 = Non-COVID-19. p values represent comparisons between CAP and COVID-19.

Characteristic	Total population		Excluding ICU attendance ≤ 72 hr of hospital admission		Excluding microbiological or radiological pneumonia	
	AUC	95% CI	AUC	95% CI	AUC	95% CI
WCC on admission	0.75	0.68-0.83	0.77	0.70-0.84	0.76	0.68-0.83
CRP on admission	0.66	0.58-0.74	0.71	0.63-0.79	0.65	0.57-0.73
Δ WCC	0.67	0.59-0.76	0.66	0.57-0.75	0.68	0.59-0.76
Δ CRP	0.74	0.66-0.81	0.73	0.65-0.80	0.74	0.66-0.81
WCC and Δ WCC	0.75	0.68-0.83	0.77	0.70-0.84	0.76	0.68-0.83
WCC and Δ CRP	0.80	0.73-0.87	0.81	0.74-0.88	0.80	0.73-0.87
Δ WCC and Δ CRP	0.74	0.67-0.82	0.73	0.65-0.81	0.74	0.67-0.82
WCC, Δ WCC and Δ CRP	0.80	0.74-0.87	0.81	0.74-0.88	0.80	0.73-0.87

Table 2. Discriminatory accuracy of WCC, CRP, Δ WCC and Δ CRP for diagnosis of CAP compared to COVID-19 in RFH patients. Populations included were all patients (n=384) admitted >48 hours (n=53 for CAP and n=331 for COVID 19) or excluding 79 COVID-19 patients that attended ICU within 72 hours of hospital admission, or excluding 18 COVID-19 patients with microbiological or radiological evidence of pneumonia. AUC, area under the curve; CI, confidence interval.

Cut-off	Sensitivity %	Specificity %	Positive predictive value %	Negative predictive value %	Positive likelihood ratio	Negative likelihood ratio
WCC>8.2	79.2	58.8	24.6	94.4	1.92	0.35
WCC>9.5	67.9	70.6	28.1	92.9	2.31	0.45
Δ CRP<3.5	75.5	61.3	24.8	93.7	1.95	0.40
Δ CRP<-15	62.3	75.0	29.7	92.2	2.50	0.50
Δ CRP<0	73.6	65.2	26.4	93.6	2.11	0.41
WCC>8.2 AND Δ CRP<0	62.3	80.8	35.4	92.6	3.25	0.47
WCC>8.2 OR Δ CRP<0	90.6	43.1	21.2	96.4	1.59	0.22

Table 3. Discriminatory performance of WCC and Δ CRP cut-offs for diagnosis of bacterial pneumonia. Populations included were 366 patients admitted to hospital >48hours, including 52 pneumonia cases and 331 COVID-19 cases with no microbiological or radiological evidence of pneumonia.

Diagnosis	CAP	COVID-19	Influenza	p values
Numbers	169	181	162	-
Chest radiograph	Lobar consolidation 169 (100%)	Lobar consolidation 0 (0%) CVCX0: 22 (12.2) CVCX1: 71 (39.2) CVCX2: 36 (19.9) CVCX3: 5 (2.8) Ungraded: 47 (26.0)		-
Male, n (%)	81 (47.9)	104 (57.5)	60 (37.0)	0.0865
Age, median (range)	74 (18-98)	71 (29-98)	63 (19-98)	0.0633
Ethnicity, n (%)				0.0335
White	128 (76)	115 (64)	108 (67)	
Asian	11 (7)	26 (14)	18 (11)	
Black	1 (1)	11 (6)	7 (4)	
Mixed	0 (0)	2 (1)	2 (1)	
Other/ unknown	29 (17)	27 (15)	27 (17)	
Charlson index				0.0206
co-morbidities n (%)				
0	51 (30)	81 (45)	78 (48)	
1	51 (30)	58 (32)	40 (25)	
2	35 (21)	23 (13)	30 (19)	
3+	32 (19)	19 (10)	14 (8)	
Positive microbiology results, n (%)				0.0393
Sputum	2 (1.2)	2 (1.1)	3	
Blood	6 (3.6)	5 (2.8)	1	
Urine Ag	8 (4.7)	0 (0.0)	2	
Mycoplasma PCR	0 (0.0)	0 (0.0)	2	
Blood samples collected 48-72hr into admission, n (%)	99 (58.6)	60 (33.1)	47 (29.0)	-

Table 4. Patients identified in each diagnostic group at BH. Chest radiograph codes for COVID-19 patients based on British Society of Thoracic Imaging guidelines, CVCX0 = Normal, CVCX1 = Classic for COVID-19, CVCX2 = Indeterminate for COVID-19, CVCX3 = Non-COVID-19. p values represent comparisons between CAP and COVID-19.

Characteristic	Total population		Excluding ICU attendance ≤ 72 hr of hospital admission		Excluding microbiological or radiological pneumonia	
	AUC	95% CI	AUC	95% CI	AUC	95% CI
WCC on admission	0.79	0.72-0.87	0.83	0.76-0.90	0.80	0.73-0.88
CRP on admission	0.65	0.56-0.73	0.68	0.59-0.76	0.66	0.57-0.74
Δ WCC	0.77	0.70-0.84	0.78	0.70-0.85	0.77	0.69-0.84
Δ CRP	0.76	0.68-0.83	0.76	0.68-0.84	0.75	0.67-0.83
WCC and Δ WCC	0.81	0.74-0.88	0.83	0.77-0.90	0.81	0.74-0.88
WCC and Δ CRP	0.84	0.78-0.91	0.87	0.81-0.93	0.84	0.78-0.91
Δ WCC and Δ CRP	0.80	0.73-0.87	0.81	0.73-0.88	0.79	0.72-0.86
WCC, Δ WCC and Δ CRP	0.84	0.78-0.91	0.87	0.80-0.93	0.84	0.77-0.91

Table 5. Discriminatory accuracy of WCC, CRP, Δ WCC and Δ CRP for detection of bacterial pneumonia in BH patients. Populations included were all patients (n=159) admitted >48 hours (n=99 for CAP and n=60 for COVID 19) or excluding 21 COVID-19 patients that attended ICU within 72 hours of hospital admission, or 4 COVID-19 patients with microbiological or radiological evidence of pneumonia. AUC, area under the curve; CI, confidence interval.

Cut-off	Sensitivity %	Specificity %	Positive predictive value %	Negative predictive value %	Positive likelihood ratio	Negative likelihood ratio
WCC>8.2	84.3	57.1	75.8	69.6	1.97	0.28
WCC>9.5	76.4	71.4	81.0	65.6	2.67	0.33
Δ CRP<3.5	66.3	73.2	79.7	57.7	2.47	0.46
Δ CRP<-15	56.2	80.4	82.0	53.6	2.86	0.55
Δ CRP<0	65.1	75.0	80.6	57.5	2.61	0.46
WCC>8.2 AND Δ CRP<0	55.1	85.7	85.9	54.5	3.85	0.52
WCC>8.2 OR Δ CRP<0	94.4	46.4	73.6	83.9	1.76	0.12

Table 6. Discriminatory performance of WCC and Δ CRP cut-offs for diagnosis of bacterial pneumonia in BH patients. Populations included were 155 patients admitted to hospital >48hours, including 99 pneumonia cases and 56 COVID-19 cases with no microbiological or radiological evidence of pneumonia.

Figure S1

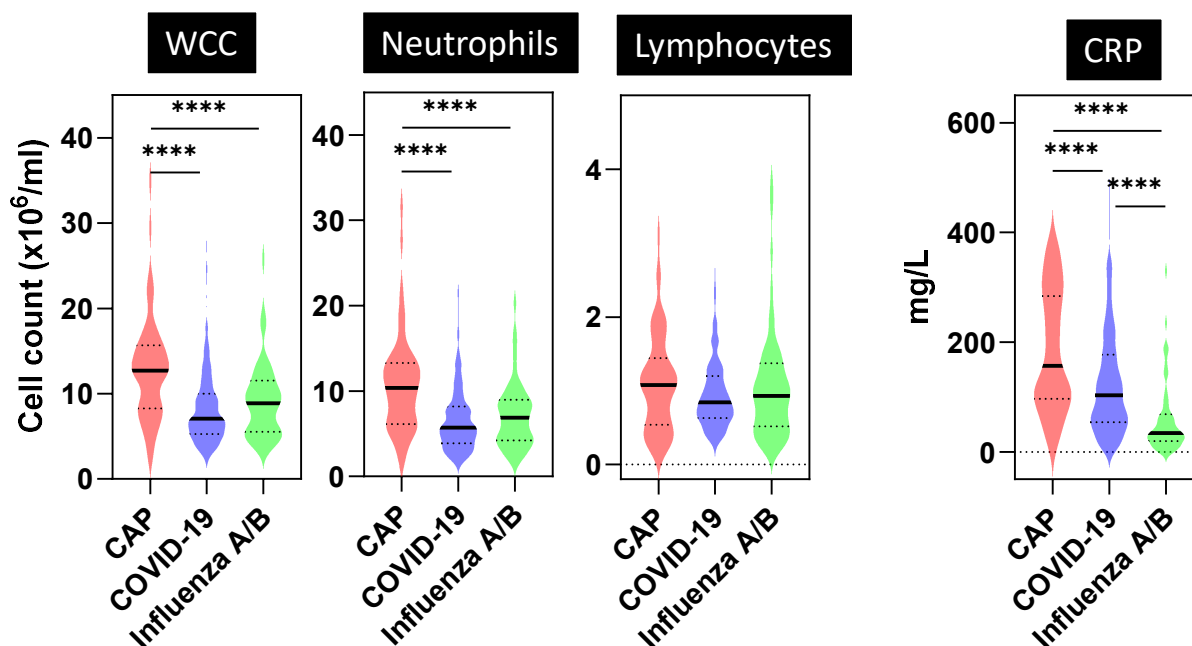


Figure S1. Admission blood samples for RFH patients admitted >48hours. Violin plots represent distribution of values for CAP (n=53), COVID-19 (n=331) and influenza A/B (n=53) patients. Bold lines represent median values. Dotted lines represent IQR values. **** indicates p < 0.0001 by Mann-Whitney test.

Figure S2

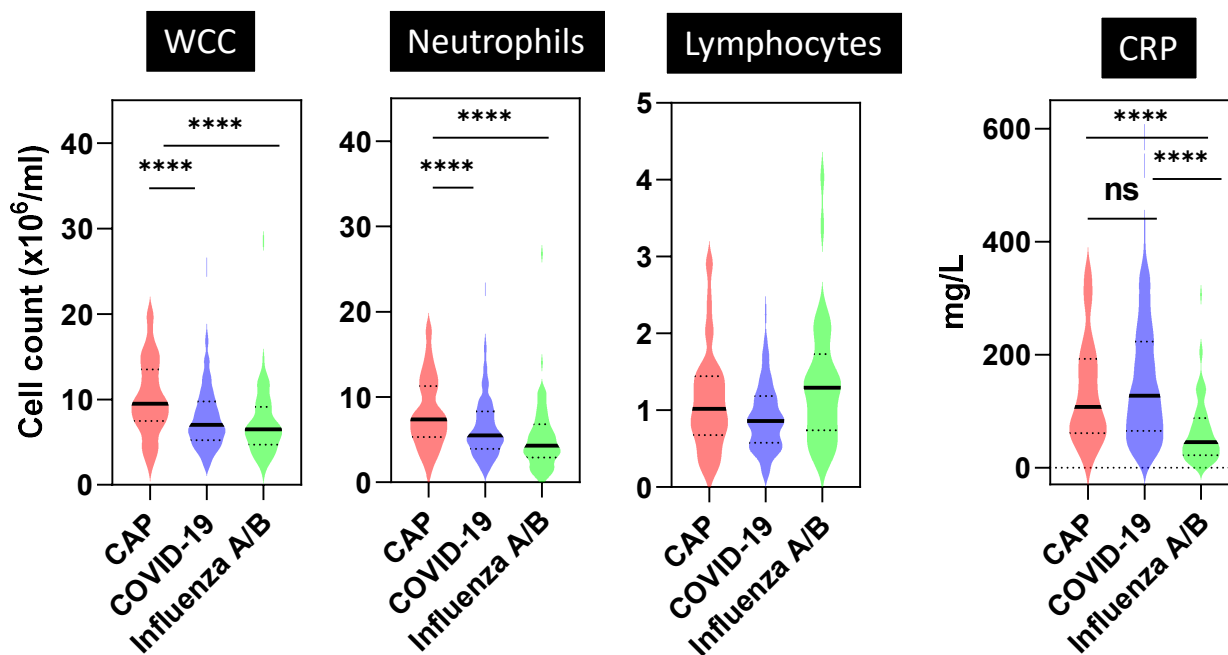


Figure S2. Blood samples collected from RFH patients 48-72 hours into admission. Violin plots represent distribution of values for CAP (n=53), COVID-19 (n=331) and influenza A/B (n=53) patients. Bold lines represent median values. Dotted lines represent IQR values. **** indicates $p < 0.0001$ and ns indicates non-significant by Mann-Whitney test.

Figure S3

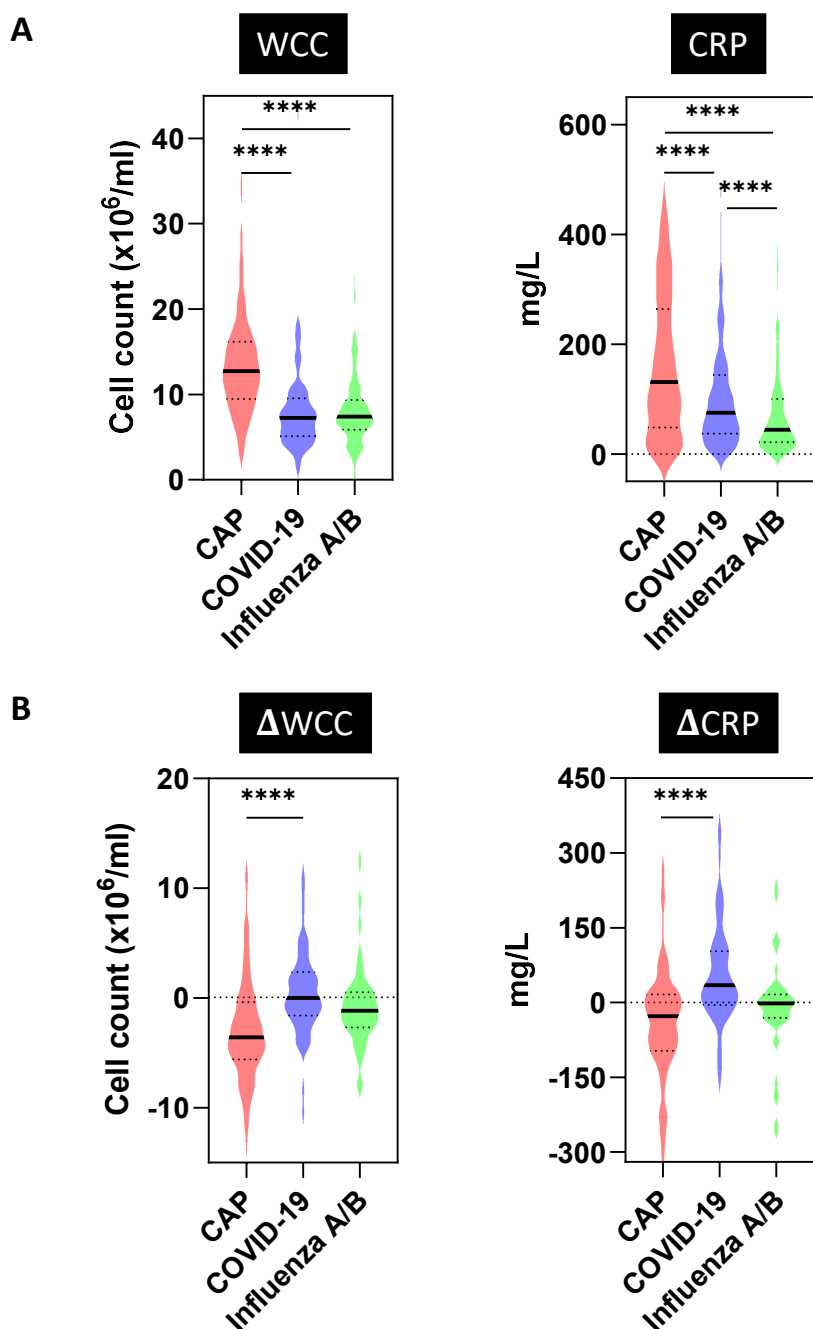


Figure S3. (A) Blood samples collected from BH patients on admission for CAP (n=169), COVID-19 (n=181) and influenza A/B (n=162) patients. (B) Difference (Δ) in blood parameters between samples collected on admission and samples collected 48-72 hours into admission for CAP (n= 99), COVID-19 (n=60) and influenza A/B (n=47) patients. Violin plots represent distribution of values. Bold lines represent median values. Dotted lines represent IQR values. **** indicates $p < 0.0001$ by Mann-Whitney test.

	Hospital	RFH			BH		
	Disease	CAP	COVID-19	Influenza	CAP	COVID-19	Influenza
SPUTUM	<i>S pneumoniae</i>	2	0	2	0	0	0
	<i>H influenzae</i>	2	0	1	1	0	2
	<i>M catarrhalis</i>	1	1	0	1	0	0
	<i>S aureus</i>	0	2	1	0	6	2
	<i>M pneumoniae</i> (PCR)	5	2	0	0	0	0
BLOOD	<i>S pneumoniae</i>	1	0	1	6	0	1
	Non-pneumococcal streptococci	0	2	0	0	1	0
	<i>S aureus</i>	0	5	1	0	1	0
	Gram negative organisms	1	1	2	0	2	0
	Other	0	4	2	0	1	0
URINE	<i>S pneumoniae</i> antigen	4	3	2	8	0	0

Table S1. Bacteria identified by conventional microbiology investigations in RFH and BH patients. Numbers quantity routine clinical samples that yielded specified bacteria from patients described in tables 1 & 4.