

Efficacy of face masks, neck gaiters and face shields for reducing the expulsion of simulated cough-generated aerosols

William G. Lindsley*, Françoise M. Blachere, Brandon F. Law, Donald H. Beezhold, and John D. Noti

Health Effects Laboratory Division, National Institute for Occupational Safety and Health, Centers for Disease Control and Prevention, Morgantown, West Virginia, USA

Corresponding author:

Dr. William G. Lindsley

National Institute for Occupational Safety and Health (NIOSH)

1000 Frederick Lane, M/S 4020

Morgantown, WV 26508-5402

Email: wlindsley@cdc.gov

ABSTRACT

Face masks are recommended to reduce community transmission of SARS-CoV-2. One of the primary benefits of face masks and other coverings is as source control devices to reduce the expulsion of respiratory aerosols during coughing, breathing, and speaking. Face shields have been proposed as an alternative to face masks, but information about face shields as source control devices is limited. We used a cough aerosol simulator with a headform to propel small aerosol particles (0 to 7 μm) into different face coverings. An N95 respirator blocked 99% of the cough aerosol, a procedure mask blocked 59%, a 3-ply cloth face mask blocked 51%, and a polyester neck gaiter blocked 47% as a single layer and 60% when folded into a double layer. In contrast, the face shield blocked 2% of the cough aerosol. Our results suggest that face masks and neck gaiters are preferable to face shields as source control devices for cough aerosols.

INTRODUCTION

SARS-CoV-2, the virus that causes coronavirus disease 2019 (COVID-19), can be transmitted from person-to-person by large respiratory aerosols (airborne liquid droplets and dried particles greater than about 10 μm in diameter) produced by people who are infectious while they are talking, singing, coughing, breathing or sneezing (1, 2). Smaller aerosols also are emitted by people during these activities, suggesting that short-range airborne transmission of SARS-CoV-2 might be possible under some circumstances (3-5). To interrupt this potential transmission route, the Centers for Disease Control and Prevention (CDC), the World Health Organization (WHO), and other public health organizations recommend the wearing of face masks or other face coverings by the general public during the ongoing COVID-19 pandemic (6-8). One of the primary benefits of face coverings is to act as source control devices to reduce the expulsion of aerosols containing the virus from people who are infectious during coughing, breathing, and speaking. Source control devices are intended to protect other people from infectious aerosols emitted by the wearer, as compared with personal protective equipment such as N95 respirators which are primarily intended to protect the wearer. Studies using manikins (9, 10) and patients with respiratory infections (11, 12) have shown that wearing medical face masks can reduce the dispersion of potentially infectious aerosols from patients. Two studies in which face masks were required for visitors and healthcare workers interacting with patients in bone marrow transplant centers found a reduction in respiratory viral infections among patients (13, 14). Studies of cloth face masks have suggested that they also can be effective at reducing the release of respiratory aerosols into the environment (15-17).

Unfortunately, the use of face masks and other face coverings by the general public can present challenges. People often dislike wearing masks, and compliance can be low and inconsistent (18). Mask wearers may repeatedly don, doff and adjust face masks, which can contaminate the hands and potentially lead to disease transmission, especially when the masks are reused (19, 20). For cloth masks, the filtration efficiency and air flow resistance of different textiles varies widely (16, 21, 22). Alternative face coverings such as neck gaiters (an elastic fabric tube that fits snugly around the head and neck) are commonly used, but information about their performance as source control devices is

limited. Factors such as how well the mask fits the face and the coverage provided by a mask can have a substantial impact on the effectiveness of face masks (15, 23). Comparisons of face coverings by Fischer et al. (24) and Davies et al. (15) found substantial differences in the ability of different types of these devices to reduce the release of respiratory aerosols.

An opinion article in JAMA proposed that face shields would be more effective than face masks at reducing community disease transmission, in large part because the authors felt that face shields were more comfortable and thus that they were more likely to be widely adopted by the public (25). A previous study by our group of face shields used as personal protective devices showed that face shields protect the wearer from large cough aerosols directed at the face but are much less effective against smaller aerosols which were able to flow around the edges of the shield and be inhaled (26). However, very little work has been done examining face shields as source control devices. Two qualitative flow visualization studies of face shields and masks found that, although face shields deflected the air flow from the mouth, they did not stop aerosol particles from traveling around the face shield and entering the environment (27, 28). Beyond these studies, quantitative data on the efficacy of face shields for source control are lacking.

The objective of our study was to conduct a quantitative comparison of the efficacy of an N95 respirator, a medical procedure mask, a commercial 3-ply cloth face mask, a single and double layer fabric neck gaiter, and a commercial disposable face shield as source control devices to reduce the expulsion of small cough-generated aerosol particles into the environment. Our results provide more information about the effectiveness of different types of source control devices and will help the public health community make recommendations about the best ways to use these devices to help reduce the spread of COVID-19.

RESULTS

Our study used a cough aerosol simulator (Figure 1) to propel an aerosol cloud simulating small respiratory aerosol particles through face masks, a neck gaiter, and a face shield into a collection chamber. Neck gaiters are commonly worn either as a single layer of fabric over the mouth and nose or doubled over to provide two layers of fabric; for our experiments, we tested both configurations. The quantity of aerosol particles in six size fractions that were able to travel through or around each device are shown in Figure 2. The aerosol collected from the control experiments without a face covering or shield had a mass median aerodynamic diameter of 1.3 μm with a geometric standard deviation of 2.3. The collection efficiencies of the source control devices (that is, the fraction of the aerosol that is blocked by the device) are shown as a function of aerosol size in Figure 3. All the devices showed increased collection efficiencies as the aerosol size increased.

On average, the N95 respirator blocked 99% of the total test aerosol from being released into the environment, while the medical procedure mask blocked 59%, the cloth face mask blocked 51%, the single-layer gaiter blocked 47%, the double-layer gaiter blocked 60%, and the face shield blocked 2% of the total aerosol (Table 1). The N95 respirator, procedure mask, cloth mask, and the single-layer and double-layer gaiters all significantly reduced the aerosol emitted into the environment compared with no device ($P < 0.0001$ for each), but the face shield did not ($P = 0.9994$). The collection efficiencies of the procedure mask, cloth mask, and the single and double-layer gaiters did not differ significantly from each other, but all blocked cough aerosols significantly better than did the face shield ($P < 0.0001$). The N95 respirator outperformed all the other devices ($P < 0.0001$) (Table 2).

DISCUSSION

The amount and sizes of aerosol particles containing SARS-CoV-2 that are expelled by people who are infected are not yet known. Two studies of aerosol samples collected in patient rooms found infectious (replication-competent) SARS-CoV-2 in aerosol particles $< 4 \mu\text{m}$ in diameter (29) and $< 10 \mu\text{m}$ in diameter (30). Other studies have reported SARS-CoV-2 RNA in exhaled breath from infected patients (5), aerosol samples from

biocontainment and quarantine units housing SARS-CoV-2 infected persons (31), and in aerosol samples at multiple locations throughout two hospitals in Wuhan, China during a COVID-19 outbreak (32). The presence of small aerosol particles containing infectious SARS-CoV-2 detected in these studies suggests that in addition to large aerosols, these small aerosols might play a role in SARS-CoV-2 transmission (3-5).

Aerosol particles larger than 50-100 μm are ballistic; that is, they are affected primarily by gravity and fall quickly to the ground. Respiratory aerosol particles in this size range tend to deposit within a few meters of the source. As the aerosol particle diameter decreases from 50 to 5-10 μm , a gradual transition occurs where the settling velocity rapidly decreases, the aerosol particles remain airborne longer, and the particles are more affected by air currents. For example, a 10 μm aerosol particle takes 5.4 minutes to fall 1 meter in still air, while a 1 μm aerosol particle takes 8 hours to settle the same distance (33). Thus, small aerosol particles can remain airborne for minutes to hours and can accumulate over time in environments with poor ventilation. Small aerosol particles also are easier to inhale and can travel more deeply into the lungs (34).

Source control devices like face coverings and face masks collect respiratory particles larger than 0.3 μm primarily by impaction and interception of the aerosol particles against the fibers or solid surfaces of the device. Small aerosols require much higher air velocities to deposit by impaction than do larger aerosols, and thus are more difficult to block with source control devices (33, 35). Consequently, small aerosols present the most challenging scenario for testing source control devices since devices that block small aerosol particles would be expected to block larger ones as well. Our results show that face masks and neck gaiters can significantly reduce the expulsion of small respiratory aerosol particles during coughing. This suggests that various types of face coverings can make an important contribution to reducing the quantity of aerosol particles containing SARS-CoV-2 released into the environment by people who are infected. N95 respirators, which are worn for personal protection by healthcare workers and others at highest risk of exposure, are also very effective source control devices. In contrast, the face shield blocked very little

of the cough aerosol, indicating that face shields are not effective as source control devices for small respiratory aerosols.

The collection efficiencies of all the devices tested increased as the aerosol particle size increased, and this trend would be expected to continue for larger aerosol particles than were tested here. For example, the collection efficiency of the cloth face mask was 28% for the $< 0.6 \mu\text{m}$ particles and increased to 76% for the 4.7 to 7 μm particles. Similarly, the double-layer gaiter blocked 24% of the $< 0.6 \mu\text{m}$ particles and 76% of the 4.7 to 7 μm particles. These results suggest that cloth face coverings would be effective as source control devices against the large respiratory aerosols that are thought to play an important role in SARS-CoV-2 transmission.

Our study has several limitations. We used a single cough volume, air flow profile, and aerosol size distribution for our studies; these parameters can vary greatly from person to person. We examined the performance of these devices during simulated coughing but not breathing or speaking, which have different air flow rates and aerosol size distributions. Some internal losses of the test aerosol particles likely occurred due to settling or impaction on the surfaces of the collection chamber, which may affect the estimates of the collection efficiencies. We only used a single representative example of each type of device. The shape and composition of face coverings vary widely, and this would be expected to affect the performance of individual devices. Some face masks have exhalation valves or vents which could reduce their efficacy as source control devices. The fit of a particular mask to an individual wearer and compliance in wearing the mask correctly (i.e., over the nose and mouth) also are important factors in how well the mask performs as a source control device. The face shield that we tested has a widely used design, but alternative designs are being marketed that provide greater facial coverage and, in some cases, include fabric skirts between the shield and the face. These alternative face shield designs might perform better as source control devices.

Previous studies have shown that face shields provide eye and facial protection to the wearer from droplets and splashes (26, 36). When a face shield is worn in addition to a face mask, the face shield can also help reduce surface contamination of the mask by large aerosols and reduce the likelihood of hand contamination when the mask is removed or inadvertently touched (26). Our previous study showed that face shields provide some benefits as personal protective equipment when face masks cannot be worn (26), but as with all personal protection and source control devices, their limitations must be respected. Our results suggest that face coverings are more effective than face shields as source control devices to reduce the expulsion of respiratory aerosols into the environment as a public health measure to reduce the community transmission of SARS-CoV-2.

MATERIALS AND METHODS

Experimental Design. Our test method was similar to the modified Greene and Vesley method used to test medical masks (37), with the human test subject replaced with a cough aerosol simulator. The test apparatus is shown in Figure 1. In our system, a cough aerosol simulator propels a test aerosol through a headform into a collection chamber, and the amount of aerosol in the collection chamber is measured in each of six size fractions. The collection efficiency of each face mask, neck gaiter, or face shield was determined by comparing the amount of aerosol that was collected from the chamber with and without the device.

Cough aerosol simulator. The cough aerosol simulator is a modified version of the NIOSH cough aerosol simulator described previously (26, 38, 39). The experimental cough aerosol was generated by nebulizing a solution of 14% KCl and 0.4% sodium fluorescein using a single-jet Collison nebulizer (BGI, Butler, NJ) at 103 kPa (15 lbs./in²), passing the aerosol through a diffusion drier (Model 3062, TSI, Shoreview, MN), and mixing it with 10 L/min of dry filtered air. The test aerosol was loaded into an elastomeric bellows, and the cough airflow was produced by a computer-controlled linear motor that compresses the bellows. The flow rate of the simulated cough was based on cough flow profiles recorded from influenza patients and had a volume of 4.2 L with a peak flow rate of 11 L/s (38). The cough aerosol was expelled through the mouth of a headform into a

collection chamber. The headform used in the study has pliable skin that mimics the elastic properties of human skin in order to create a realistic simulation of how each face covering or shield would fit a human face (40).

Face masks, neck gaiter, and face shield. The devices tested were an N95 medical respirator (3M model 1860), an ASTM Level 3 medical procedure mask with ear loops (Kimberly-Clark model 47107), a cloth face mask with 3 layers of cotton fabric and ear loops (Hanes Defender), a fabric neck gaiter (FKGIONG Sun UV Protection Neck Gaiter, 95% polyester, 5% Spandex) and a disposable face shield (Fisher Scientific # 19-181-600A). The neck gaiter was tested both as a single layer of fabric and doubled over to provide two layers of fabric. The masks and respirator were not equipped with exhalation valves. The face shield was 25 cm tall and extended from the forehead of the headform to 3 cm below the chin and around the side to 3 cm before the front of the ear.

Mask fit test. For the experiments, either no device, a face mask, a neck gaiter, or a face shield were placed on the head form. Each device was used for two consecutive tests. For face masks and gaiters, a respirator fit test was performed using a PortaCount (TSI). The fit factor is a measure of the protection against airborne particles that is provided by a respiratory protective device. It is defined as the ratio of the aerosol concentration outside the respiratory protective device to the aerosol concentration inside the device (i.e., the aerosol concentration that is inhaled by the wearer). For example, a fit factor of 10 means that the ambient aerosol concentration is 10 times higher than the concentration inside the mask, and that the mask is therefore filtering out 90% of the ambient aerosol.

Aerosol collection and analysis. After placing the device on the headform and performing the fit test, the system was sealed. The test aerosol was then generated and propelled with a simulated cough through the headform and into the collection chamber. The Andersen impactor at the bottom of the collection chamber collected the aerosol particles that traveled through or around the device for 20 minutes after each cough. The Andersen impactor operates at a flow rate of 28.3 liters/minute and has six collection stages and a filter that separate the aerosol particles into seven size fractions based on the aerodynamic diameter of the particles: <0.6 μm ; 0.6-1.1 μm ; 1.1-2.1 μm ; 2.1-3.3 μm ; 3.3-

4.7 μm ; 4.7-7.0 μm ; and $>7 \mu\text{m}$. Because the amount of aerosol in the largest size fraction was small and because of possible losses due to settling of the large aerosol particles, data for the largest size fraction was not included in the analysis. The aerodynamic diameter of an aerosol particle is equal to the diameter of a sphere with a density of 1 g/cm^3 that settles at the same rate(33). It is used in aerosol science because particles with the same aerodynamic diameter settle and deposit at the same rate even the particles have different shapes and compositions. The impactor collection plates were coated with a solution of glycerol and Brij 35 to prevent particles from bouncing off the plates during collection. After aerosol collection was completed, the impactor plates were rinsed with 0.1 M Tris solution and the fluorescence of the solution was measured using a fluorometer (SpectraMax M4, Molecular Devices). The complete experimental protocol is given in the supplemental materials.

Statistical Analysis. The performance of each device was evaluated by comparing the total mass of the aerosol particles from a single cough that passed through or around the device and into the collection chamber by using a one-way ANOVA. Multiple comparisons among the different devices and the control experiments without a device were conducted using a Tukey-Kramer test. To control for variations in the amount of aerosol in each cough, a sample of each cough aerosol was collected from the bellows prior to coughing and used to normalize the aerosol mass collection results for each experiment.

REFERENCES

1. CDC How COVID-19 spreads. Retrieved May 18, 2020 from <https://www.cdc.gov/coronavirus/2019-ncov/prepare/transmission.html> (2020).
2. L. Hamner *et al.*, High SARS-CoV-2 attack rate following exposure at a choir practice — Skagit county, Washington, March 2020. *MMWR. Morbidity and Mortality Weekly Report* **69**, 606-610 (2020).
3. E. L. Anderson, P. Turnham, J. R. Griffin, C. C. Clarke, Consideration of the aerosol transmission for COVID-19 and public health. *Risk Anal.* **40**, 902-907 (2020).
4. L. Morawska, D. K. Milton, It is time to address airborne transmission of COVID-19. *Clin. Infect. Dis.* (**online ahead of print**), (2020).
5. J. Ma *et al.*, COVID-19 patients in earlier stages exhaled millions of SARS-CoV-2 per hour. *Clin. Infect. Dis.* (**online ahead of print**), (2020).

6. CDC Considerations for wearing masks. Help slow the spread of COVID-19. Retrieved September 29, 2020 from <https://www.cdc.gov/coronavirus/2019-ncov/prevent-getting-sick/cloth-face-cover-guidance.html> (2020).
7. WHO Coronavirus disease (COVID-19) advice for the public: When and how to use masks. Retrieved September 29, 2020 from <https://www.who.int/emergencies/diseases/novel-coronavirus-2019/advice-for-public/when-and-how-to-use-masks> (2020).
8. P. Edelstein, L. Ramakrishnan Report on face masks for the general public - an update. Retrieved September 29, 2020 from <https://rs-delve.github.io/addenda/2020/07/07/masks-update.html> (2020).
9. R. B. Patel, S. D. Skaria, M. M. Mansour, G. C. Smaldone, Respiratory source control using a surgical mask: An in vitro study. *J. Occup. Environ. Hyg.* **13**, 569-576 (2016).
10. A. C. K. Lai, C. K. M. Poon, A. C. T. Cheung, Effectiveness of facemasks to reduce exposure hazards for airborne infections among general populations. *J. R. Soc. Interface* **9**, 938-948 (2011).
11. D. K. Milton, M. P. Fabian, B. J. Cowling, M. L. Grantham, J. J. McDevitt, Influenza virus aerosols in human exhaled breath: Particle size, culturability, and effect of surgical masks. *PLoS Pathog.* **9**, e1003205 (2013).
12. N. H. L. Leung *et al.*, Respiratory virus shedding in exhaled breath and efficacy of face masks. *Nat. Med.* **26**, 676-680 (2020).
13. A. D. Sung *et al.*, Universal mask usage for reduction of respiratory viral infections after stem cell transplant: A prospective trial. *Clin. Infect. Dis.* **63**, 999-1006 (2016).
14. K. A. Sokol *et al.*, Masks for prevention of respiratory viruses on the BMT unit: Results of a quality initiative. *Transpl. Infect. Dis.* **18**, 965-967 (2016).
15. A. Davies *et al.*, Testing the efficacy of homemade masks: Would they protect in an influenza pandemic? *Disaster Med. Public Health Prep.* **7**, 413-418 (2013).
16. A. Konda *et al.*, Aerosol filtration efficiency of common fabrics used in respiratory cloth masks. *ACS Nano* **14**, 6339-6347 (2020).
17. S. Asadi *et al.*, Efficacy of masks and face coverings in controlling outward aerosol particle emission from expiratory activities. *Sci. Rep.* **10**, 15665 (2020).
18. Y. Longtin, C. Akakpo, O. T. Rutschmann, D. Pittet, H. Sax, Evaluation of patients' mask use after the implementation of cough etiquette in the emergency department. *Infect. Control Hosp. Epidemiol.* **30**, 904-908 (2009).
19. L. Casanova, E. Alfano-Sobsey, W. A. Rutala, D. J. Weber, M. Sobsey, Virus transfer from personal protective equipment to healthcare employees' skin and clothing. *Emerg. Infect. Dis.* **14**, 1291-1293 (2008).
20. T. M. Brady *et al.*, Transfer of bacteriophage MS2 and fluorescein from N95 filtering facepiece respirators to hands: Measuring fomite potential. *J. Occup. Environ. Hyg.* **14**, 898-906 (2017).
21. G. R. Teesing, B. V. Straten, P. Man, T. Horeman, Is there an adequate alternative for commercially manufactured face masks? A comparison of various materials and forms. *J. Hosp. Infect.* (**online ahead of print**), (2020).
22. A. M. Wilson *et al.*, COVID-19 and use of non-traditional masks: How do various materials compare in reducing the risk of infection for mask wearers? *J. Hosp. Infect.* **105**, 640-642 (2020).

23. R. B. Lawrence, M. G. Duling, C. A. Calvert, C. C. Coffey, Comparison of performance of three different types of respiratory protection devices. *J. Occup. Environ. Hyg.* **3**, 465-474 (2006).
24. E. P. Fischer *et al.*, Low-cost measurement of facemask efficacy for filtering expelled droplets during speech. *Science Advances*, eabd3083 (2020).
25. E. N. Perencevich, D. J. Diekema, M. B. Edmond, Moving personal protective equipment into the community: Face shields and containment of COVID-19. *JAMA* **323**, 2252-2253 (2020).
26. W. G. Lindsley, J. D. Noti, F. M. Blachere, J. V. Szalajda, D. H. Beezhold, Efficacy of face shields against cough aerosol droplets from a cough simulator. *J. Occup. Environ. Hyg.* **11**, 509-518 (2014).
27. S. Verma, M. Dhanak, J. Frankenfield, Visualizing droplet dispersal for face shields and masks with exhalation valves. *Phys Fluids (1994)* **32**, 091701 (2020).
28. I. M. Viola *et al.*, Face coverings, aerosol dispersion and mitigation of virus transmission risk. *arXiv (preprint)*, (2020).
29. J. L. Santarpia *et al.*, The infectious nature of patient-generated SARS-CoV-2 aerosol. *MedRxiv (preprint)* doi: **10.1101/2020.07.13.20041632**, 2020.2007.2013.20041632 (2020).
30. J. A. Lednicky *et al.*, Viable SARS-CoV-2 in the air of a hospital room with COVID-19 patients. *medRxiv (preprint)* doi: **10.1101/2020.08.03.20167395v1**, 2020.2008.2003.20167395 (2020).
31. J. L. Santarpia *et al.*, Transmission potential of SARS-CoV-2 in viral shedding observed at the University of Nebraska medical center. *MedRxiv (preprint)* doi: **10.1101/2020.03.23.20039446**, (2020).
32. Y. Liu *et al.*, Aerodynamic analysis of SARS-CoV-2 in two Wuhan hospitals. *Nature* **582**, 557-560 (2020).
33. W. C. Hinds, *Aerosol technology. Properties, behavior, and measurement of airborne particles.* (John Wiley & Sons, New York, ed. 2nd, 1999), pp. 483.
34. J. H. Vincent, Health-related aerosol measurement: A review of existing sampling criteria and proposals for new ones. *J. Environ. Monit.* **7**, 1037-1053 (2005).
35. W. G. Lindsley, Filter pore size and aerosol sample collection, in *NIOSH Manual of Analytical Methods*, K. Ashley, P. F. O'Connor, Eds. (National Institute for Occupational Safety and Health, Cincinnati, OH, 2016), chap. FP, pp. FP1-14. Available at <http://www.cdc.gov/niosh/docs/2014-151/pdfs/chapters/chapter-fp.pdf>.
36. R. J. Roberge, Face shields for infection control: A review. *J. Occup. Environ. Hyg.* **13**, 235-242 (2016).
37. L. B. Quesnel, The efficiency of surgical masks of varying design and composition. *Br. J. Surg.* **62**, 936-940 (1975).
38. W. G. Lindsley, J. S. Reynolds, J. V. Szalajda, J. D. Noti, D. H. Beezhold, A cough aerosol simulator for the study of disease transmission by human cough-generated aerosols. *Aerosol Sci. Technol.* **47**, 937-944 (2013).
39. W. G. Lindsley *et al.*, Efficacy of an ambulance ventilation system in reducing EMS worker exposure to airborne particles from a patient cough aerosol simulator. *J. Occup. Environ. Hyg.* **16**, 804-816 (2019).

40. M. S. Bergman *et al.*, Development of an advanced respirator fit-test headform. *J. Occup. Environ. Hyg.* **11**, 117-125 (2014).

ACKNOWLEDGMENTS

Disclaimer: The findings and conclusions in this report are those of the authors and do not necessarily represent the official position of the National Institute for Occupational Safety and Health (NIOSH), US Centers for Disease Control and Prevention (CDC). Mention of any company or product does not constitute endorsement by NIOSH, CDC.

Funding: This research was funded by the CDC. NIOSH is a part of the CDC.

Author contributions: WGL designed and built the test apparatus, created the experimental design, and analyzed the data. FMB and BFL performed the experiments and assisted with development of the test system. DHB and JDN supervised the work and assisted with the planning of the experiments and interpretation of the results.

Competing interests: The authors declare no competing interests.

FIGURES AND TABLES

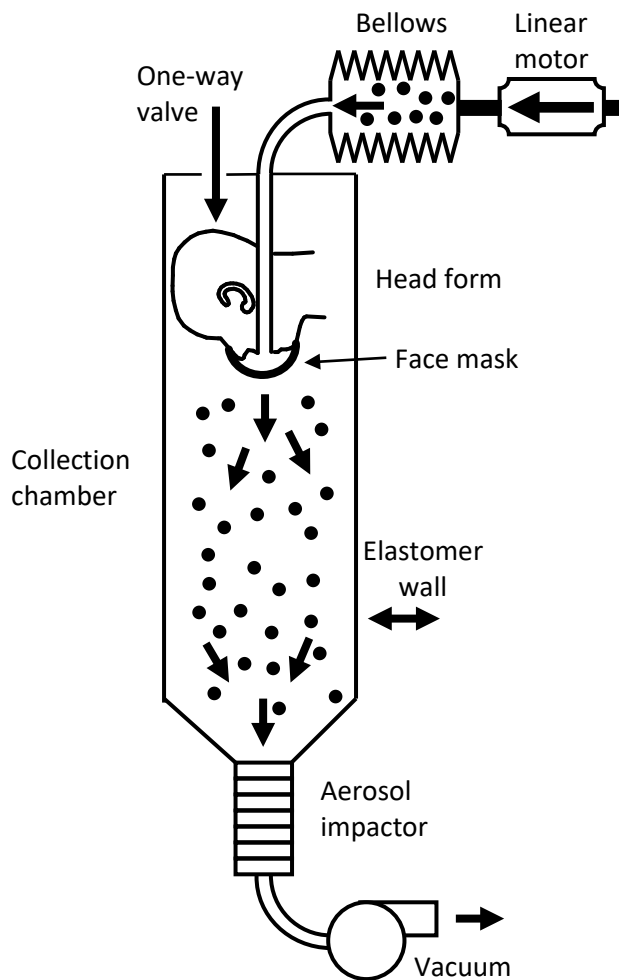


Figure 1: Cough aerosol simulator system for source control measurements.
The system consists of an aerosol generation system, a bellows and linear motor to produce the simulated cough, a pliable skin head form on which the face mask, neck gaiter or face shield is placed, a 105 liter collection chamber into which the aerosol is coughed, and an Andersen impactor to separate the aerosol particles by size and collect them.

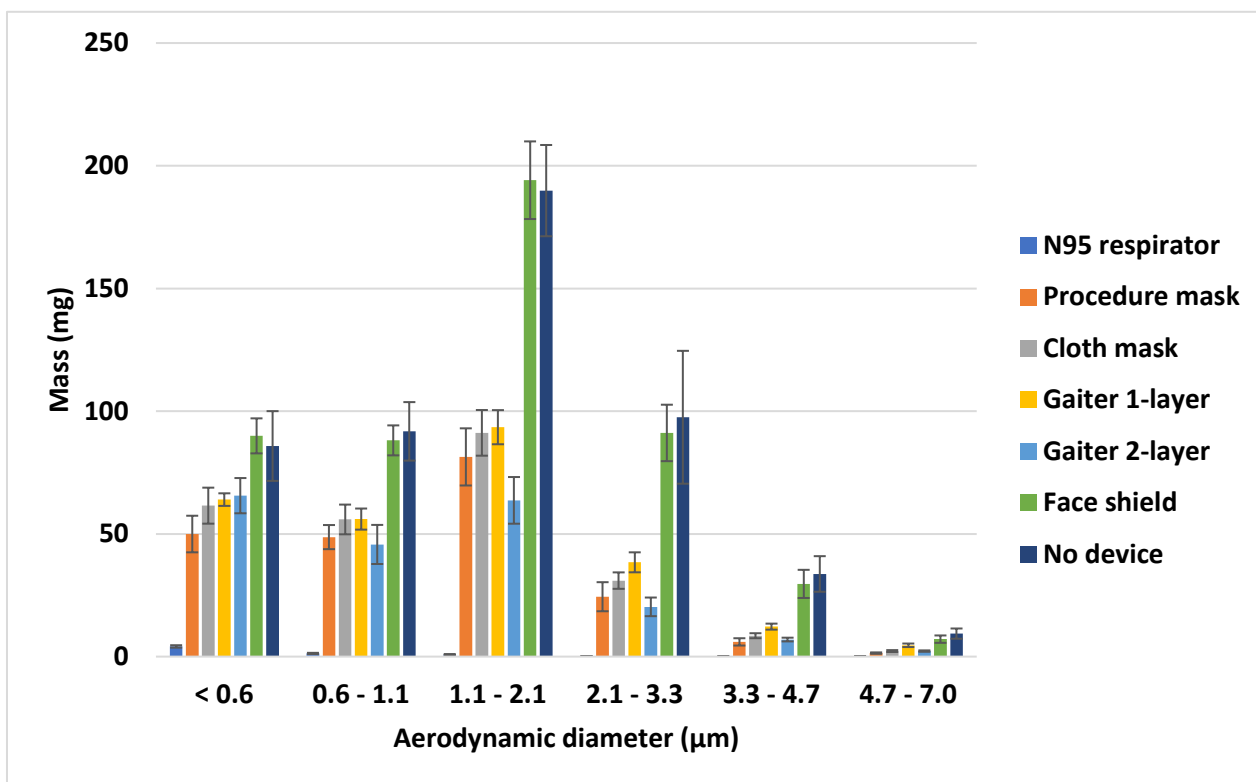


Figure 2: Mass of aerosol collected in each size fraction. The graph shows the amount of simulated respiratory aerosol that was collected from the collection chamber in each aerosol particle size fraction after a single simulated cough. The bars show the mean and standard deviation.

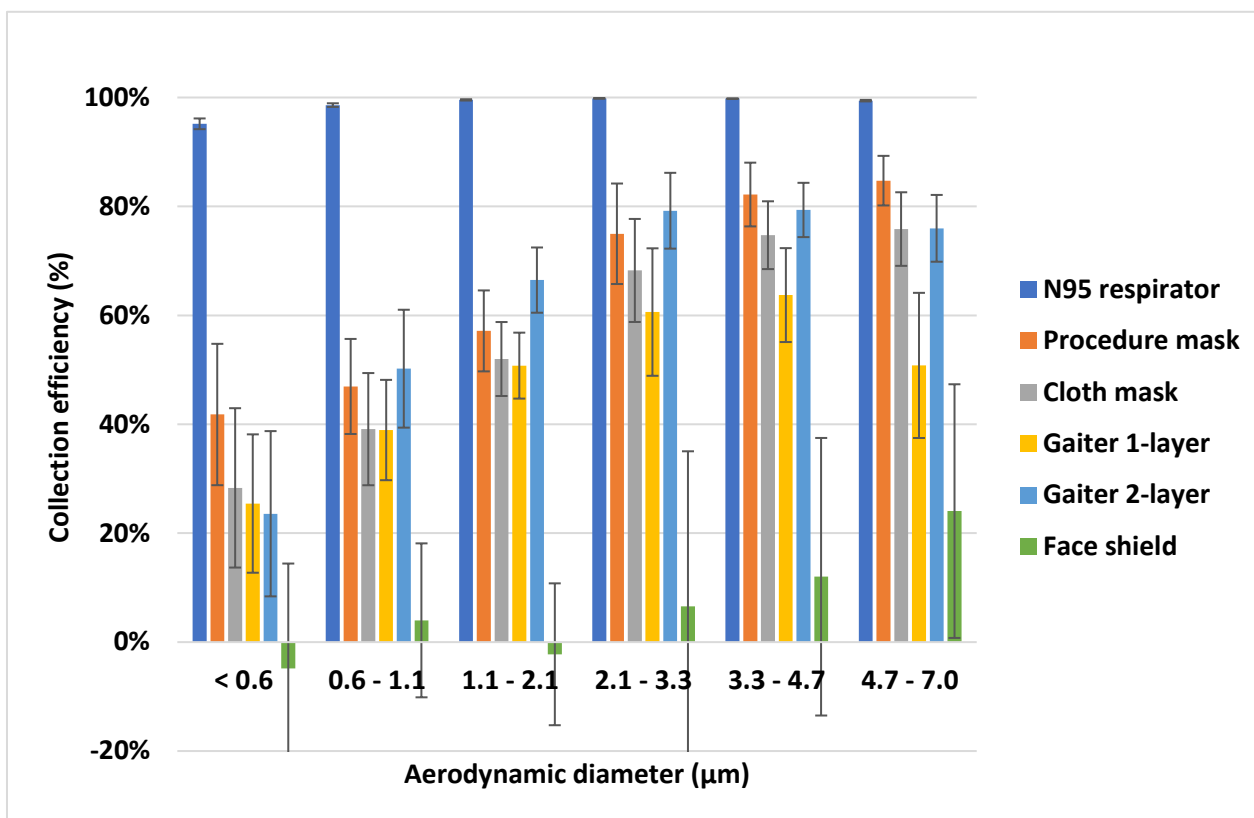


Figure 3: Collection efficiency of face masks, neck gaiter and face shield. The collection efficiency is the percentage of aerosol particles that were blocked by the face mask, neck gaiter or face shield compared with experiments without a device. The plot shows the means and standard deviations of the collection efficiency in each size fraction.

Table 1: Total mass of aerosol expelled into collection chamber and device collection efficiencies. The fit factor, aerosol mass, and collection efficiency are given as mean (standard deviation).

<i>Device tested</i>	<i>Number of experiments</i>	<i>Fit factor</i>	<i>Aerosol mass (mg)</i>	<i>Collection efficiency</i>
No device	12	n/a	512 (64)	n/a
Procedure mask	6	2.9 (0.5)	212 (23)	58.5% (6.9%)
Cloth mask	6	1.3 (0.1)	251 (23)	50.9% (7.7%)
Neck gaiter (single layer)	6	1.7 (0.5)	270 (18)	47.2% (7.5%)
Neck gaiter (double layer)	6	1.9 (0.4)	206 (26)	59.8% (7.2%)
Face shield	6	n/a	502 (46)	1.8% (15.3%)
N95 respirator	4	197 (4.2)	6.6 (1.0)	98.7% (0.3%)

Table 2: Comparison of devices. Comparison of aerosol mass expelled into the collection chamber while wearing face masks, neck gaiters and face shields.

<i>PPE types compared</i>		<i>95% confidence intervals for mean differences in aerosol mass (mg)</i>			<i>P-value</i>
		<i>Lower limit</i>	<i>Mean difference</i>	<i>Upper limit</i>	
N95 respirator	No device	-579.0	-505.0	-431.0	<0.0001
Procedure mask	No device	-363.2	-299.1	-235.0	<0.0001
Cloth mask	No device	-324.2	-260.1	-196.1	<0.0001
Gaiter (single layer)	No device	-305.4	-241.3	-177.2	<0.0001
Gaiter (double layer)	No device	-369.9	-305.8	-241.7	<0.0001
Face shield	No device	-73.2	-9.1	55.0	0.9994
N95 respirator	Face shield	-578.6	-495.9	-413.2	<0.0001
Procedure mask	Face shield	-364.0	-290.0	-216.0	<0.0001
Cloth mask	Face shield	-325.0	-251.0	-177.1	<0.0001
Gaiter (single layer)	Face shield	-306.2	-232.2	-158.2	<0.0001
Gaiter (double layer)	Face shield	-370.7	-296.7	-222.7	<0.0001
N95 respirator	Gaiter (double layer)	-281.9	-199.2	-116.4	<0.0001
Procedure mask	Gaiter (double layer)	-67.3	6.7	80.7	>0.9999
Cloth mask	Gaiter (double layer)	-28.3	45.7	119.7	0.4811
Gaiter (single layer)	Gaiter (double layer)	-9.5	64.5	138.5	0.1231
N95 respirator	Gaiter (single layer)	-346.4	-263.7	-180.9	<0.0001
Procedure mask	Gaiter (single layer)	-131.8	-57.8	16.2	0.2147
Cloth mask	Gaiter (single layer)	-92.8	-18.8	55.2	0.9846
Procedure mask	Cloth mask	-113.0	-39.0	35.0	0.6599
N95 respirator	Procedure mask	-288.6	-205.9	-123.1	<0.0001
N95 respirator	Cloth mask	-327.6	-244.8	-162.1	<0.0001

Supplementary Materials

Experimental protocol for test of effectiveness of masks & face shields for source control

- 1) If needed, prepare dye stock solution by dissolving 10 g of sodium fluorescein in 80 ml of 0.1 M Tris solution (0.125 g/ml).
- 2) Add 40 μ l of Tween 80 to 40 ml 0.1 M Tris base to get 0.1 M Tris/0.1% Tween 80.
- 3) Coat impactor plates (one set for each experiment)
 - a. Plate coating solution: 5 g Glycerol, 40 ml Ethanol, 1 g Brij 35.
 - b. Stir or vortex coating solution before use.
 - c. Put six 100 mm plate lids on a level surface.
 - d. Deposit 0.5 ml of solution in the center of each plate and allow it to spread by itself—do not tilt the plate. Allowing the solution to spread naturally gives a nice smooth coating, while tilting and rotating gives a blotchy surface.
 - e. Allow to dry for at least 30 minutes. Overnight is fine.
- 4) Check that the silica gel inside the diffusion drier is dry (cobalt blue).
 - a. Since we no longer use compressed air from the vacuum pump, you do not need to check its silica gel
 - b. If the silica gel in the diffusion drier has begun to change color to clear, regenerate it or change to fresh batch.
 - c. Regenerate silica gel by heating it to 350°F overnight. Keep in mind that the visible silica gel is furthest away from the aerosol and so will be the last to change color.
 - d. **IMPORTANT:** Note that only the diffusion drier endcap marked “open this end” should be removed from the diffusion drier. The other endcap marked “Do not remove” is attached to the central screen tube and should not be detached.
- 5) If the diffusion drier is not attached, attach it. Adjust the drier so that it is oriented vertically. Make sure that all Swagelok fittings are tight.

- 6) Put a 47 mm 5 μm PVC filter in an inline filter holder. Attach the filter holder to the vacuum line (inlet and outlet must be attached to connections). This referred to as the vacuum inline filter.
- 7) If a mask or face shield are to be tested, place them on the head form.
- 8) Take a photograph of the PPE on the head form.
- 9) If testing a face mask, perform a fit test using the PortaCount. See the PortaCount protocol.
 - a. **Important:** Make sure that the vacuum inline filter holder is installed and connected to the vacuum pump, or cap the line leading to the inline filter. Otherwise, particles will be drawn into the bellows through the inline filter line and the fit test reading will be too low.
- 10) Close the head form access panels.
- 11) Attach the cough aerosol collection chamber to the simulator.
- 12) Load impactor plates and filter into Andersen impactor.
 - a. Record the serial number (4 digit) of the Andersen impactor.
 - b. Check that the screws on the bottom piece are screwed in.
 - c. Place filter holder upright.
 - d. Place small notched ring in filter holder with notches facing downward (away from support screen).
 - e. Place the stainless-steel screen in the filter holder with the “inlet” side up (facing the filter).
 - f. Place a 5 μm PVC filter on top of the screen with collection side up (collection side is up when filter is in package from supplier)
 - g. Place rubber O-ring on filter holder and press into place
 - h. Place stage 1 on top of stage 7 to protect O-ring groove, invert, and place on stand.
 - i. Place filter holder evenly on top of stage 7.
 - j. Clamp filter holder together
 - k. Remove stage 1, turn stage 7 right-side up and place in holder

1. Add numbered stages and coated Petri plate lids in order. Be sure to line up the numbers on the sides of the impactor stages.
- 13) Turn on the power strip for the cough simulator system.
- 14) Check that mass flow controller has power (display is on).
- 15) Turn on the Newport photometer. When the display reads “Calibration due”, hit continue.
- 16) Turn on the Cough simulator control computer.
- 17) For cough experiments, the vacuum needle valve on the vacuum pump should be completely screwed in. For breathing experiments, the vacuum needle valve should be adjusted to give zero air flow in or out of mouth. See the protocol “Balancing air flow for breathing experiments”.
- 18) Connect the mass flow control vacuum line to the impactor.
- 19) Check that vacuum is on (yellow handle & gauge to the right of the Cough simulator computer).
- 20) Turn on the house compressed air (yellow handle on drier mounted to wall of environmental chamber to the right of the Cough simulator computer). Check that the air pressure is 15 PSI (large gauge on top of grey pressure regulator). You should not need to adjust this.
- 21) Turn on the TSI flowmeter and connect it and the top of the impactor to the impactor.
- 22) Use the Cole-Parmer Mass Flow Control program to check the flow rate through the Andersen impactor. Adjust the “desired flowrate” as necessary to get 28.3 liters/min. Note the final setting.
- 23) Attach the Andersen impactor to the bottom of the cough aerosol collection chamber.
- 24) On the cough simulator computer, open the program “Bart & Homer check microswitches & pump.vi”.

- 25) Check that the cough simulator is set to Homer (this is necessary so that the program uses the correct NI-DAQ task ID's for data I/O, which correspond to the correct NI-DAQ modules).
- 26) On the Front Panel, start the VI by clicking on the white arrow on the left side of the tool bar.
- 27) Click on the "Vacuum pump" switch to start the vacuum pump and open the solenoid valve for the compressed air. The "Air pressure" light should come on. If not, stop the vacuum pump, check that the signal cable and all hoses are connected, and try again.
- 28) Check that the vacuum pump air pressure is 20 PSI (gauge on the vacuum pump). The vacuum needle valve on vacuum pump should be completely screwed in for cough experiments but should be adjusted to give zero air flow in or out of mouth for breathing experiments.
- 29) Set the diluent air flow (left-hand rotameter) to **9.9 liters/min for cough experiments (bottom of silver rotameter ball should be at 78) or 20 liters/min for breathing experiments**. Flow rate should be read at the bottom of the of rotameter ball.
- 30) If the Aeroneb nebulizer is being used, check that the flow to the nebulizer is 2 lpm (right-hand rotameter).
- 31) Click on the "Vacuum pump" switch again to close the valve and press the "stop" button to stop the program. The program will take a few seconds to complete.
- 32) Before connecting the nebulizer to the diffusion drier:
 - a. Add 30 ml of MilliQ H₂O to a clean Collison nebulizer.
 - b. Connect the Collison nebulizer to a 20 psi compressed air source or to the compressed air source on the cough simulator.
 - c. Visually check that the nebulizer is producing a strong spray and is not clogged.
 - d. Empty the nebulizer
- 33) Attach a clean nebulizer to the diffusion drier and connect the air supply.

- 34) Add 1 ml of 0.125 g/ml sodium fluorescein stock (1 g/8 ml) to 30 ml of 14% KCl.
- 35) Add solution to clean 1-jet Collison nebulizer. Check that bottom of nozzle sticks down about 3/8" into fluorescein solution.
- 36) Turn on the chamber HEPA filter. It can run continuously throughout the experiments.
- 37) On the simulator control computer, open the Homer LabVIEW files folder.
- 38) If performing cough tests (as vs. breathing tests):
 - a. Open the cough machine control program (Cough system controller w mass flow controller.vi).
 - b. Check that the cough simulator is set to Homer.
 - c. Check that cough volume is set correctly.
 - d. Check that the cough type is set to Aerosol.
 - e. Check that bellows type is set to elastomer.
 - f. Check that the mass flow controller is set to correct value to get 28.3 liters/minute of actual flow (as determined during calibration above).
 - g. The program will create a log file each time it is run that records when each cough occurs. The file name includes the experiment ID, the date, and the time the file was created.
 - h. Set the number of coughs to 1.
 - i. Set time to wait after cough before homing bellows to 20 minutes.
 - j. If the temperature & humidity sensor is connected, turn on the Collect temperature/humidity data button and set the port to COM10.
 - k. Check that "Use Andersen Impactor" button is on.

- l. Start the cough control program by clicking on the white arrow in the upper left part of the screen.
 - m. Enter the experiment ID when prompted.
 - n. Accept the default names for the data files.
 - o. When the program first starts running, the cough button will be disabled and grayed out until the system checks are completed.
 - p. When ready to cough, click on the “Cough” button in the cough control program. The computer will take about a minute to go through each cough. A flashing indicator will show that the cough is in process.
 - q. Check that nebulizer is running correctly.
 - r. Continue sample collection for at least 20 minutes after the last cough.
 - s. After collection is complete, stop the cough control program by clicking on “Stop”.
- 39) If performing breathing tests (as vs. cough tests):
- a. Open the breathing control program (Breathing system controller w mass flow controller.vi).
 - b. Check that the simulator is set to Homer.
 - c. Check that the breathing rate is set correctly (usually 10 lpm).
 - d. Check that “Time to generate aerosol” is set to 60 seconds.
 - e. Check that “Time to Breathe” is set to 5 minutes.
 - f. Check that “Collection time after breathing” is set to 20 minutes.
 - g. Check that the mass flow controller is set to correct value to get 28.3 liters/minute of actual flow (as determined during calibration above).

- h. The program will create a log file each time it is run. The file name includes the experiment ID, the date, and the time the file was created.
 - i. If the temperature & humidity sensor is connected, turn on the Collect temperature/humidity data button and set the port to COM10.
 - j. Check that “Use Andersen Impactor” button is on.
 - k. Start the control program by clicking on the white arrow in the upper left part of the screen.
 - l. Enter the experiment ID when prompted.
 - m. When the program first starts running, the breathe button will be disabled and grayed out until the system checks are completed.
 - n. When ready to cough, click on the “Breathe” button in the control program. A flashing indicator will show that breathing is in process.
 - o. Check that nebulizer is running correctly.
 - p. Simulator will breathe for the specified time. It will then stop breathing but continue sample collection for the specified time. After collection is complete, the simulator will stop automatically.
- 40) Remove the nebulizer and place a cap on the diffusion drier.
- 41) Remove the vacuum inline filter holder and replace it with the vacuum purge adaptor.
- 42) Remove the Andersen impactor and attach the purge adaptor. Connect the purge adaptor to the mass flow controller.
- 43) Open and run the purge program.
- 44) Label six 10 ml glass vials as Plates 1-6.
- 45) Preparing standards

- a. Prepare 1 tube with 8 ml 0.1 M Tris & 8 tubes with 4 ml each. Label these Nebulizer 1-9. When loading the standards onto the plate, use Nebulizer 2-9 for the standards.
 - b. Take 8 μ l aliquot from nebulizer and add to first tube.
 - c. Take 2 ml from first tube, add to second tube and vortex. Repeat for rest of tubes.
- 46) Place the filter from Andersen impactor in 150 ml plastic beaker and add 12 ml 0.1 M Tris with 0.1% Tween 80.
 - 47) Place the filter from the vacuum inline filter holder in a 150 ml plastic beaker and add 12 ml 0.1 M Tris with 0.1% Tween 80.
 - 48) Add 3 ml 0.1 M Tris to a vial labeled for vacuum inline filter.
 - 49) Place both beakers on the Belly Dancer and cover. Run at setting 5 for 20 minutes.
 - 50) After 20 minutes, take 1 ml of wash solution from the vacuum inline filter beaker and add to the vial with 3 ml 0.1 M Tris. This 4:1 dilution should be added to the plate for reading the fluorescence.
 - 51) The wash solution from the Andersen impactor filter can be added directly to the plate (no dilution needed).
 - 52) Add 5 ml 0.1 M Tris to each impactor plate. Use cell scraper to stir and scrape surface of plate to recover as much dye as possible. Remove solution & place in labeled vials (Plates 1-6).
 - 53) Add 3 ml 0.1 M Tris to each plate. Use cell scraper to stir and scrape surface of plate to recover as much dye as possible. Remove solution, place in labeled vials (Plates 1-6), and vortex.
 - 54) Place 200 μ l of solutions in clear bottom black 96-well plate as shown in plate schematic for fluorescent assay below.
 - 55) Read plate using Spectra Max spectrophotometer
 - a. Insert plate into Spectra Max. Do not use the purple adaptor for bottom reads.
 - b. Set to read fluorescence endpoint with excitation & emission wavelengths at 485 nm and 525 nm.
 - c. Set well pattern to read.
 - d. **Read plate from bottom.**

- 56) Pour excess nebulizer fluid into fluorescein waste bottle. Fill nebulizer reservoir and dump rinse water into waste.
- 57) To clean the nebulizer:
 - a. Thoroughly rinse the nebulizer and glass jar with MilliQ water.
 - b. Unscrew the tip of the nebulizer and rinse the inside and outside.
 - c. Inspect the O-ring on the nebulizer shaft for tears or cracks.
 - d. Screw the tip back on to the nebulizer until it bottoms out.
 - e. Fill the nebulizer jar $\frac{3}{4}$ full with water and screw jar onto nebulizer.
 - f. Attach the nebulizer to 20 psi compressed air and run for 10 minutes. While it is running, check for air bubbles at the top of the tip that would indicate that the nebulizer is leaking. If the nebulizer is leaking, mark it and set it aside for repair.
- 58) Rinse the stages of the Andersen impactor with water. Thoroughly blow water out of stage holes using compressed air.
- 59) Gently wipe down face of head form with water to remove any fluorescein.