

1 **Prevalences and healthcare expenditures related to 58 health conditions from 2012 to 2017 in**
2 **France: diseases and healthcare expenditure mapping, a national population-based study**

3 Antoine Rachas¹, Christelle Gastaldi-Ménager¹, Pierre Denis¹, Thomas Lesuffleur¹, Muriel Nicolas¹,
4 Laurence Pestel¹, Corinne Mette¹, Jérôme Drouin¹, Sébastien Rivière¹, Ayden Tajahmady¹, Claude
5 Gissot¹, Anne Fagot-Campagna¹

6 ¹Direction de la stratégie, des études et des statistiques, Caisse Nationale d'Assurance Maladie. 50
7 avenue du Professeur André Lemierre, 75 986 Paris Cedex 20

8 Correspondence to: Antoine Rachas antoine.rachas@assurance-maladie.fr

9

10 **Abstract**

11 **Background**

12 Description of the prevalence of diseases and resources mobilized for the management of each
13 disease is essential to identify public health priorities. We described the prevalences of 58 health
14 conditions and all reimbursed healthcare expenditure by health condition in France between 2012 and
15 2017.

16 **Methods and Findings**

17 All national health insurance general scheme beneficiaries (87% of the French population) with at least
18 one reimbursed healthcare expenditure were included from the French national health database. We
19 identified health conditions (diseases, episodes of care, chronic treatments) by algorithms using ICD-
20 10 codes for long-term diseases or hospitalisations, medications or medical procedures. We reported
21 crude and age and sex-standardized annual prevalences between 2012 and 2017, and total and mean
22 (per patient) reimbursed expenditure attributed to each condition without double counting, and
23 according to the type of expenditure.

24 In 2017, in a population of 57.6 million people (54% of women, median age: 40 years), the most
25 prevalent diseases were diabetes (standardized prevalence: 5.8%), chronic respiratory diseases
26 (5.5%) and chronic coronary heart disease (2.9%). Diseases concentrating the highest expenditures
27 were active cancers (10% of total expenditure of €140.1 billion), mental illness (10%; neurotic and
28 mood disorders: 4%; psychotic disorders: 3%), and chronic cardiovascular diseases (8%). Between
29 2012 and 2017, the most marked increase in total expenditure concerned liver and pancreatic
30 diseases (+9.3%), related to the increased drug expenditure in 2014. Conversely, the increase in the
31 number of patients (and the prevalence) explained the majority of the increase of total expenditures for
32 cardiovascular disease, diabetes and mental illness.

33 **Conclusions**

34 These results showed a regular increase of the prevalence and expenditure of certain chronic
35 diseases, probably related to ageing of the population, and increased expenditures related to major
36 therapeutic innovations. The Diseases and Healthcare Expenditure Mapping therefore enlightens
37 decision-makers in charge of public health and health accounts.

38

39 **Key words:** SNDS, chronic diseases, healthcare expenditure, healthcare system.

40

41 Introduction

42 In high-income countries, increasing life expectancy and changing lifestyles have led to an increased
43 prevalence of chronic diseases and the number of years lived with disease. (1) To address the many
44 challenges resulting from longer life expectancy (medical, related to healthcare organization, financial)
45 and global health crisis such as COVID-19 pandemic, we need to reinforce the resilience of health
46 systems, defined by the OECD as the capacity of health systems to adapt efficiently to changing
47 economic, technological and demographic environments. (2) In a context of increasing financial
48 constraints, a health system must be able to meet the dual human and economic challenge to ensure
49 its own sustainability. Description of the prevalence of diseases and resources specifically mobilized
50 for the management of each disease is essential to identify public health priorities and to more clearly
51 understand some of the mechanisms underlying healthcare expenditure. (3–5)

52 Over the last decade, tools have been developed to describe morbidity, prevalence of diseases and/or
53 healthcare expenditure related to these diseases. The Global Burden of Disease (GBD) provides, for
54 each country of the world, estimations of incidences, prevalences, numbers of disability-adjusted life
55 years (DALYs), years of life lost (YLLs), and years lost due to disability (YLDs) and describes the
56 causes of death. (1,6) The Health Expenditures by Diseases and Conditions project is designed to
57 describe expenditure by disease in 14 European countries. (7) At the national level, claims data used
58 for healthcare billing are increasingly used to describe expenditure by disease (4,5,8–12) and
59 morbidity (13,14) and sometimes contribute to GBD data. However, the lack of individual information
60 sometimes requires the use of modelling, especially to estimate prevalences or YLDs (as in the GBD)
61 or to group diseases into large categories. Another common limitation is the lack of representativity of
62 the study population compared to the general population when health insurance is not universal.
63 Finally, only very few studies have simultaneously estimated the prevalences of diseases and
64 described the expenditure related to each disease (15).

65 In France, the National Health Data System (“*Système National des Données de Santé, SNDS*”)
66 contains extensive individual information (including inpatient, outpatient, diagnosis and medication
67 data) for almost the entire French population, as public health insurance coverage is mandatory. (16)
68 For these reasons, SNDS has been increasingly used for clinical and health services research over
69 recent years. (17,18) Since 2012, SNDS has been used to develop a standardized tool, the Diseases

70 and Health Expenditures Mapping (DHEM), the results of which are published in an annual report to
71 parliament, which is used to prepare the Social Security Funding Act. The main objective of the DHEM
72 was to describe nationwide, annual expenditures by health condition for a broad spectrum of health
73 conditions (58 treated diseases, chronic treatments and episodes of care) with no double counting,
74 previously described as a general cost-of-illness study, a conceptually relevant method for a political
75 objective. (19) The secondary objective was to estimate the prevalences of these health conditions in
76 healthcare users, globally and by age and sex. In this paper, we present, for the first time, the
77 methodology of the DHEM, the main results for 2017 and their variations between 2012 and 2017.

78

79 **Methods**

80 **Data source: the French National Health Data System (SNDS)**

81 French national health insurance provides mandatory health insurance coverage by means of several
82 schemes, depending on occupational class, that cover the entire population. Individual data from
83 administrative forms and reimbursement claims have been prospectively recorded in a common data
84 warehouse, SNDS, since 2003. (16) SNDS contains demographic data, including vital status, and
85 exhaustive information on pharmacy claims and the type of outpatient services or procedures
86 reimbursed (without their results). In outpatient settings, physician-reported diagnoses are available
87 only for beneficiaries with "*Affection de Longue Durée*" status, which waives copayments related to the
88 treatment of specific long-term diseases (LTD). Each LTD diagnosis is validated individually by a
89 national health insurance physician according to regulations. SNDS also includes the French Hospital
90 Discharge Database ("*Programme de Médicalisation des Systèmes d'Information*"), containing
91 inpatient diagnoses and procedures, from 2006 to 2017 at the time of this study. Overall, information
92 from pharmacy claims and the use of both inpatient and outpatient healthcare services, including
93 related expenditure, is available. Diagnoses (LTD and hospital discharge) are recorded according to
94 the ICD 10th Revision (ICD-10) codes and drugs are recorded according to the Anatomical
95 Therapeutic Chemical (ATC) index.

96 All SNDS data are anonymous and individually linkable. Access to data is subject to prior training and
97 authorisation and needs approval by the independent French data protection authority ("*Commission*

98 *Nationale Informatique et Libertés*). Our public institution has permanent access to these data in
99 application of the provisions of articles R. 1461-12 et seq. of the French Public Health Code, therefore
100 ethical board approval was not required.

101 **Study design**

102 The DHEM is equivalent to an annually repeated cross-sectional population-based study, without
103 sampling since all eligible individuals are included. As the method is progressively modified each year,
104 the study is repeated on all years studied at each new version. As the linkage of each individual over
105 time in the SNDS was substantially improved in 2012, the present study was therefore conducted over
106 the years 2012 to 2017.

107 **Study population**

108 The DHEM has included all people with at least one reimbursement for healthcare delivery during the
109 year studied. The DHEM has been restricted to beneficiaries of the general scheme or other specific
110 health insurance schemes ("*Sections Locales Mutualistes, SLM*"), for whom LTD status was
111 comprehensively recorded during the study period. These schemes cover about 57 million people
112 (87% of the French population).

113 **Health conditions**

114 Algorithms have been developed in order to identify 58 health conditions (grouped in 15 categories)
115 from the medical information available in the SNDS (summarised in a previous article (20)). As the
116 primary objective of the DHEM was to attribute reimbursed expenditures between various health
117 conditions, the algorithms were not designed to estimate the incidence and prevalence of diseases
118 (including people with a disease that is either not diagnosed or not treated), but to identify populations
119 with treated diseases, chronic treatments and frequent, serious or expensive care episodes. All
120 algorithms were submitted to expert review and have been subsequently adapted. Continuing
121 improvement of the DHEM algorithms has also benefited from the work conducted by REDSIAM, a
122 network of SNDS expert users, which records and compares existing algorithms. (21) Detailed
123 definitions and expert review of the DHEM algorithms are publicly available in French

124 (<https://www.ameli.fr/l-assurance-maladie/statistiques-et-publications/etudes-en-sante->
125 <publique/cartographie-des-pathologies-et-des-depenses/methode.php>).

126 These algorithms were based on the following elements: LTD ICD-10 code; ICD-10 code of diagnoses
127 related to hospitalisations during the year studied (or during up to 5 previous years, depending on the
128 algorithm); drugs that are specific to certain chronic diseases (diabetes, HIV infection, Parkinson's
129 disease, etc.); and, for several diseases, laboratory tests (HIV infection), medical procedures, lump
130 sums or diagnosis-related group (end-stage renal disease). Chronic treatments were defined by the
131 presence of at least three drug dispensings during the year (six dispensings for "analgesics or non
132 steroidal anti inflammatory drugs"), or two dispensings when at least one concerned the dispensing of
133 a large pack size. Maternity concerned women between the ages of 15 to 49 years with 100% health
134 insurance cover for maternity care from the first day of the 6th month of pregnancy until the twelfth day
135 after delivery, or hospitalised during the year for delivery. "Hospitalisations for other reasons"
136 concerned people with at least one hospital stay for a reason other than those taken into account for
137 the diseases otherwise identified in the DHEM. In particular, this reason may be related to infection
138 (pneumonia), trauma, surgery (hip prosthesis, appendectomy), exploratory examinations
139 (colonoscopy), or ill-defined symptoms or conditions.

140 Several health conditions may be identified in the same patient, but some conditions, corresponding to
141 different states of the same disease, were exclusive during the same year (for example: acute
142 coronary syndrome and chronic coronary heart disease; breast cancer during the active treatment
143 phase and breast cancer under surveillance; chronic dialysis, renal transplantation and follow-up for
144 renal transplantation). Similarly, chronic treatments and the corresponding diseases were exclusive,
145 for example, "chronic psychoactive drug treatment (without a diagnosis of mental illness)". The
146 objective of algorithms identifying chronic treatments was to detect people who probably presented a
147 certain disease, but without an ICD-10 code allowing identification of this disease.

148 **Expenditures**

149 Reimbursed expenditures directly attributable to healthcare administered during a given year were
150 calculated for each individual, from a national health insurance perspective. Expenditures funded by
151 national health insurance, but not directly attributable to individuals (e.g. lump sums paid to healthcare

152 institutions or healthcare professionals) and medical and social welfare expenditures were beyond the
153 scope of this study. Three categories of expenditure were defined: ambulatory care, hospital care and
154 cash benefits administered by national health insurance.

155 Ambulatory care expenditures comprised reimbursed expenditure related to healthcare administered
156 by healthcare professionals, drugs, medical devices, laboratory tests, transport and other ambulatory
157 care goods and services. These expenditures were derived directly from SNDS individual
158 reimbursement data.

159 Hospital care expenditures comprised expenditures related to short-stay hospitalisations ("medicine,
160 surgery, obstetrics" field of the hospital discharge database), rehabilitation care hospitalisations
161 ("aftercare and rehabilitation" field), psychiatric hospitalisations, hospital at home and public hospital
162 outpatient care. These expenditures were calculated for each stay from the specific expenditures of
163 each diagnosis-related group.

164 Finally, cash benefits, also available in the SNDS for each individual, comprised daily allowances paid
165 by national health insurance for sick leave or maternity leave and compensation for work accidents,
166 occupational disease or loss of salary as a result of disability.

167 **Attribution of expenditures to health conditions**

168 Reimbursed expenditures relative to short-stay, rehabilitation care or psychiatric hospitalisations and
169 maternity cash benefits were directly attributed to the corresponding health conditions. A same stay
170 could be attributed to only one health condition. As recommended in the methodology of the Health
171 Expenditures by Diseases and Conditions project, priority was given to the principal diagnosis of the
172 stay (with the ICD-10 codes of the health condition identification algorithms). (7) However, some very
173 expensive diseases were considered to be responsible for the expenditure related to the stay, even
174 when they were coded as a comorbid condition (haemophilia, hereditary metabolic diseases,
175 amyloidosis, cystic fibrosis, dermatopolymyositis). Similarly, neonatal hospital stays were attributed
176 directly to maternity care expenditure. Specific management rules were applied to the rare cases in
177 which a stay was attributed to several health conditions. For stays that could not be attributed to a
178 health condition, less disease-specific ICD-10 codes were used, based on the fact that the person had
179 presented this health condition during the same year. Finally, short-stay hospitalisation expenditures

180 not attributed to a health condition at the end of this process were attributed to "hospitalisations for
181 other reasons".

182 As the available information for all of the other types of expenditure was insufficient to directly attribute
183 expenditures to health conditions, a top-down method was applied. For individuals with only one
184 health condition identified in the year, expenditures were attributed to this health condition. For the
185 other individuals, expenditures were distributed between health conditions *pro rata* to the mean
186 expenditures calculated in individuals with only one health condition.

187 In order to avoid overestimating expenditures attributed to a given disease, a sum corresponding to
188 the expenditures for so-called "usual" care was also subtracted from each type of ambulatory care
189 expenditure for each individual, with the exception of transport and midwifery expenditures. The sum
190 subtracted corresponded to the second decile of the expenditures of the age- and sex-matched
191 population with healthcare utilisation corresponding to the type of expenditure considered.

192 Overall, the expenditure attributed to a health condition was therefore the sum of expenditures
193 attributed by these various methods, with no possibility of double counting.

194 **Statistical analyses**

195 Sociodemographic characteristics of the study population were described for 2012 and 2017, including
196 healthcare reimbursement covered by complementary universal health insurance, attributed to low-
197 income earners (€8,723 per year for a person living alone in metropolitan France in 2017) and then an
198 indicator of social precariousness.

199 Crude annual prevalences of each health condition were calculated globally and by age (0 to 14
200 years-old, 15 to 34, 35 to 54, 55 to 64, 65 to 74, 75 or more) and sex, and were standardized for the
201 age and sex structure of the French population at 01/01/2018 (source: Institut National de la
202 Statistique et des Etudes Economiques <https://www.insee.fr/fr/statistiques>). The same analysis was
203 performed for all people with at least one health condition. Total (€) and mean (€ per year and per
204 patient) expenditures attributed to the various health conditions were then described, globally and by
205 type of expenditure. Mean annual growth rates of expenditures and numbers of patients, the two
206 components of total expenditure, were calculated for the period 2012-2017. In order to analyse

207 expenditures according to categories of health conditions, we distinguished acute cardiovascular
208 disease (CVD) from chronic CVD and cancers during the active treatment phase from cancers under
209 surveillance, as these conditions correspond to very different situations in terms of management and
210 costs.

211 Numbers were rounded off to the nearest thousand in view of the dimensions of the population and
212 mean expenditures were rounded off to the nearest hundred euros. Proportions were expressed with
213 two significant figures. As the analyses were not performed on a random sample of the population, no
214 confidence interval was estimated. Statistical analyses were performed with SAS Enterprise Guide 4.3
215 software, SAS Institute Inc. Cary, NC.

216

217 **Results**

218 **Population**

219 In 2017, the DHEM comprised 57.6 million people (55.9 million in 2012), comprising 54% of women
220 (54% in 2012). The median age was 40 years (interquartile range: 20-59), i.e., one year older than in
221 2012 (39 years (19-58)). The proportion of complementary universal health insurance beneficiaries
222 was 9.6% (vs. 8.5% in 2012). The mortality rate was 7.7 per 1,000 people in 2017, versus 7.3 per
223 1,000 people in 2012.

224 **Prevalences of health conditions**

225 In 2017, 45% (26.0 million) of the study population presented at least one health condition (Table 1).
226 The most prevalent health conditions were "hospitalisations for other reasons" (14%), chronic
227 antihypertensive treatment (without a diagnosis of cardiovascular disease, diabetes or end-stage renal
228 disease (ESRD)) (11%), maternity (9.1%), diabetes (5.6%), chronic respiratory disease (5.5%), and
229 chronic treatment with anxiolytics (4.8%) and antidepressants or mood regulators (4.5%) (without a
230 diagnosis of mental illness). Prevalences standardized to the sex and age structure of the French
231 population were very similar to crude prevalences.

232 As expected, the proportion of people with at least one health condition increased markedly with age,
233 6.6% before the age of 15 to 90% after the age of 74 in women and 9.9% to 91%, respectively, in men
234 (Supplemental Table 1). The proportion of people between the ages of 15 and 34 years with at least
235 one health condition was twofold higher in women (22%) than in men (11%).

236 A cardiovascular disease was identified in 7.0% of individuals. In people over the age of 74,
237 cardiovascular disease was identified in 31% of women and 46% of men, most commonly chronic
238 coronary heart disease (8.9% and 20%, respectively) and arrhythmias and conduction disorders (14%
239 in women and 19% in men). Cardiovascular risk treatment (without a diagnosis of cardiovascular
240 disease, diabetes or ESRD) was identified more frequently in women (14%, 44% after the age of 74)
241 than in men (11%, 32% after the age of 74), most commonly consisting of antihypertensive treatment.
242 Diabetes was identified in 5.6% of individuals, more frequently in men (6.4%) than in women (4.9%).
243 The proportion of people with a cancer (all sites combined) was 4.6%, comparable between men and
244 women, but higher in women than in men between the age of 15 and 64. A mental illness was
245 identified in 3.8% of individuals and chronic psychoactive drug treatment (without a diagnosis of
246 mental illness) was identified in 8.7% of individuals (particularly after the age of 74: 32% of women and
247 21% of men). Psychotic disorders were less common in women (0.63%) than in men (0.89%), in
248 contrast with neurotic and mood disorders (2.6% and 1.5%, respectively). Finally, maternity care
249 concerned 12% of women aged 15-34 years and 5.5% of women aged 35-54 years.

250 The prevalence of most health conditions increased with age. However, mental illness starting in
251 childhood was more common among the youngest people, particularly boys. Multiple sclerosis was
252 more common in women between the ages of 35 and 64. Cystic fibrosis was more common among
253 young people. The prevalences of chronic respiratory diseases (combining asthma and chronic
254 obstructive pulmonary disease) and "hereditary metabolic diseases and amyloidosis" were higher in
255 individuals aged 0-14 years than in individuals aged 15-34 years, then increased again among older
256 individuals. This pattern was also observed for "hospitalisations for other reasons".

257 The age- and sex-standardized prevalences of "hospitalisations for other reasons" increased between
258 2012 and 2017 (especially in 2016), as did those of CVD, diabetes and mental illness (Figure 1).
259 Inversely, these prevalences decreased for cardiovascular risk treatment (without a diagnosis of

260 cardiovascular disease, diabetes or ESRD), chronic psychoactive drug treatment (without a diagnosis
261 of mental illness) and maternity care.

262 **Reimbursed expenditures attributed to health conditions in 2017**

263 In 2017, €140.1 billion were reimbursed by national health insurance for the healthcare of patients
264 included in the DHEM (Table 2), versus €123.0 billion in 2012. "Hospitalisations for other reasons"
265 accounted for the highest expenditure (€31.3 billion, i.e., 22% of total expenditure), followed by
266 cancers, mental illness, CVD, maternity and diabetes, as detailed below.

267 Expenditures attributed to the management of cancers (€15.6 billion, 11%) largely concerned cancers
268 during the active treatment phase (€14.0 billion, 10% of total expenditure) (Table 2). Apart from the
269 heterogeneous group of "other cancers during the active treatment phase", breast cancer during the
270 active treatment phase was the specific cancer site associated with the highest expenditure (€2.4
271 billion, 1.7% of total expenditure), ahead of lung cancer (€1.6 billion, 1.1%), colorectal cancer (€1.4
272 billion, 1.0%) and prostate cancer (€1.1 billion, 0.76%) during the active treatment phase. The
273 predominant types of expenditure for cancers during the active treatment phase were short-stay
274 hospitalisations (€7.1 billion) and pharmacy-dispensed drugs (€2.6 billion) (Figure 2).

275 Expenditures attributed to the management of mental illness (€14.5 billion, 10%) were primarily related
276 to neurotic disorders and mood disorders (€5.3 billion, 3.8% of total expenditure) and psychotic
277 disorders (€4.4 billion, 3.2%) (Table 2). Expenditures were largely related to psychiatric
278 hospitalisations (€8.4 billion) (Figure 2).

279 Expenditures attributed to CVD (€14.0 billion, 10%) were essentially related to chronic CVD (€11.6
280 billion, 7.5% of total expenditure) (Table 2). Health conditions accounting for the largest share of
281 expenditures were chronic coronary heart disease (€2.8 billion, 2.0% of total expenditure), arrhythmias
282 or conduction disorders (€1.9 billion, 1.3%) and sequelae of stroke (€1.8 billion, 1.3%). Expenditures
283 attributed to chronic CVD were essentially related to short-stay hospitalisations (€3.0 billion),
284 pharmacy-dispensed drugs (€1.8 billion) and nursing care (€1.2 billion) (Figure 2). Stroke (€1.3 billion,
285 0.90% of total expenditure) and acute heart failure (€1.2 billion, 0.85%) were the conditions associated
286 with the highest expenditures among the expenditures attributed to acute CVD (€3.5 billion, 2.5%).

287 Expenditures attributed to acute CVD were essentially related to hospitalisations, mainly in short-stay
288 wards (€2.3 billion) and rehabilitation care (€0.6 billion).

289 Expenditures attributed to maternity care represented €7.8 billion (5.5% of total expenditure). The
290 main types of expenditures were short-stay hospitalisations (€3.1 billion) and cash benefits (€3.2
291 billion). Total midwife ambulatory care expenditure was €0.3 billion.

292 Finally, expenditures attributed to diabetes represented €7.0 billion (5.0% of total expenditure), with a
293 large proportion corresponding to pharmacy-dispensed drugs (€2.1 billion), nursing care (€1.3 billion)
294 and "other health products" (€1.3 billion), including medical devices.

295 For certain health conditions, especially cancers during the active treatment phase and acute CVD,
296 the main determinant of total expenditure was the high mean expenditure per patient (Figure 3).
297 Inversely, the main determinant of total expenditure for "hospitalisations for other reasons" and chronic
298 psychoactive drug treatment (without a diagnosis of mental illness) and cardiovascular risk treatment
299 (without a diagnosis of cardiovascular disease, diabetes or ESRD) was the large number of individuals
300 concerned. ESRD was identified in only 82,000 individuals, but with an mean expenditure of €42,500
301 per patient.

302 **Growth of reimbursed expenditures between 2012 and 2017**

303 Between 2012 and 2017, healthcare expenditures increased by €17.1 billion (+14%). Expenditures
304 increased for most health conditions, particularly "hospitalisations for other reasons" (+€3.2 billion,
305 +2.3%/year), cancers during the active treatment phase (+€2.9 billion, +5.3%/year), mental illness
306 (+€2.0 billion, +3.2%/year) and chronic CVD (+€1.6 billion, +3.6%/year) (Figure 4 and Figure 5).
307 Expenditures for cardiovascular risk treatment (without a diagnosis of CVD, diabetes or ESRD)
308 declined over this period (-€442 million, -1.7%/year).

309 Despite a less marked absolute increase of expenditures, a high mean annual growth rate of total
310 expenditures for liver and pancreatic disease was observed between 2012 and 2017 (+9.3%/year)
311 (Figure 5). The largest share of this increase can be attributed to the increased mean expenditure per
312 patient (+6.1%/year/patient). Expenditures attributed to liver or pancreatic disease increased

313 considerably between 2013 and 2014 (+€852 million) (Figure 4). This growth was essentially related to
314 drug expenditures (Supplemental Figure 1).

315 Similarly, for cancers during the active treatment phase, the largest share of the increased total
316 expenditures (+5.3%/year) can be attributed to the increased mean expenditures (+3.1%/year/patient)
317 (Figure 5). In particular, mean expenditures increased for prostate cancer (+9.0%/year/patient)
318 (Supplemental Figure 2), related to drugs, specialist consultations and short-stay hospitalisations
319 (Supplemental Figure 3). Mean expenditures attributed to colorectal cancer declined between 2012
320 and 2017 (-1.9%/year/patient), while the number of patients increased (+4.3%/year).

321 Inversely, the growth of total expenditure was essentially due to an increase of the number of patients
322 for CVD (+3.3%/year), diabetes (+2.8%/year), mental illness (+2.6%/year), chronic respiratory
323 diseases (+1.6%/year), ESRD (+3.9%/year) and the "rare or inflammatory diseases or HIV infection"
324 category (+4.2%/year) (Figure 5). Within this last category of health conditions, the numbers of
325 patients increased for the most prevalent diseases: +7.1%/year for ankylosing spondylitis and related
326 diseases, +4.1%/year for rheumatoid arthritis and related diseases and +3.4%/year for chronic
327 inflammatory bowel disease (Supplemental Figure 4). Furthermore, total expenditures attributed to
328 cystic fibrosis, although a rare disease (prevalence: 0.014%, see Table 1), markedly increased
329 (+19%/year), almost exclusively due to an increase of the mean expenditures per patient (+16%/year).
330 This relative increase of total expenditures was the highest of all health conditions studied in the
331 DHEM and was related to increased drug expenditures in 2016 (Supplemental Figure 5).

332 **Discussion**

333 For the first time in France, the DHEM has allowed a nationwide dual epidemiological and economic
334 approach, by identifying a large number of health conditions on the basis of medical and claims data
335 and then by distributing all reimbursed expenditures between these health conditions, without double
336 counting. The most prevalent diseases were diabetes, chronic respiratory diseases and chronic
337 coronary heart disease. As expected, the highest expenditures were observed for cancers during the
338 active treatment phase and chronic cardiovascular disease, but also mental illness. The most marked
339 increase in total expenditures over the study period concerned liver or pancreatic diseases. Apart from

340 diseases, maternity and, by construction, "hospitalisations for other reasons", were among the most
341 prevalent and most expensive health conditions.

342 A limitation of this study is that the information available in the SNDS could not be used to distinguish
343 between certain health conditions, such as chronic obstructive pulmonary disease and asthma, and
344 cannot be used to study people with no reimbursed healthcare utilization during the year. The
345 prevalences of health conditions may have been underestimated in people with rare healthcare
346 utilization, such as young men. (22) Inversely, the availability of very extensive individual data in the
347 SNDS allowed detailed analysis and allowed the majority of expenditures to be directly attributed to
348 health conditions. *Pro rata* estimation of ambulatory care expenditures for people with several health
349 conditions was sometimes based on small number of patients, but the minor variations in these
350 expenditures over time suggest that this method was robust. Finally, due to the nationwide coverage
351 of the SNDS and the fact that national health insurance is mandatory in France, the DHEM allowed
352 analysis of almost all of the population, avoiding a non-participation bias. Nevertheless, the results
353 would probably be different for health insurance schemes not included in the DHEM (13% of the
354 French population, mainly farmers and self-employed workers). In years to come, the DHEM will
355 include all of the French population, but will no longer concern the years prior to 2015 due to missing
356 LTD data for certain schemes. (16)

357 The main limitations of most of the studies conducted with a similar objective in other countries were
358 related to missing data, concerning either individual data related to healthcare expenditures or
359 ambulatory care medical diagnoses, skilled nursing home data, or the fact that the study was based on
360 a limited population. (4,7–12,15,23) In France, diagnoses are not coded for each ambulatory care visit,
361 but LTD diagnoses allowed identification of a large number of serious or expensive chronic diseases
362 managed in the ambulatory care setting. Healthcare expenditures not related to individual patients are
363 not included in the DHEM and were therefore not studied, including in skilled nursing homes,
364 especially for the third of these nursing homes funded by lump sum payments. The DHEM included a
365 greater number of health conditions than in many previous studies (7–9,11,12). However, no specific
366 algorithm is available to identify certain musculoskeletal disorders, such as osteoarthritis and low back
367 and neck pain other than by "chronic treatment with analgesics or non steroidal anti inflammatory

368 drugs", although several studies have reported these conditions to be responsible for high
369 expenditures. (8–10)

370 Comparisons of international results are complex due to differences in health systems and health
371 insurance cover, technical, methodological, epidemiological and demographic differences.
372 Nevertheless, the main results concerning the most prevalent and most expensive diseases are
373 consistent with those of similar studies conducted in other countries. Differences concerned the higher
374 proportion of expenditures related to cancers in France (11%) than in most other countries (between
375 5.5% in the USA and 10% in the Czech Republic), except in Hungary (13%), Greece (13%) and
376 Finland (12%) (7,10) and the share of expenditures for maternity care (5.5%), higher than in the USA
377 (2.6%) (10) and Switzerland (1.1%) (8), probably because of maternity leave and a higher birth rate in
378 France than in Switzerland (source: CIA [https://www.cia.gov/library/publications/the-world-
379 factbook/rankorder/2054rank.html#by](https://www.cia.gov/library/publications/the-world-factbook/rankorder/2054rank.html#by)).

380 The results of this study suggest several explanations for the growth of expenditures attributed to
381 health conditions. The regular growth of expenditures for CVD and diabetes, essentially related to the
382 growing number of patients, can probably be explained by ageing of the population. For other health
383 conditions, the growth of total expenditures was mainly related to the growth of mean expenditures per
384 patient. Therapeutic innovations coincided, in certain years, with a very marked growth of drug
385 expenditures for liver and pancreatic diseases (new direct-acting antivirals against the hepatitis C virus
386 in 2014) and cystic fibrosis (lumacaftor-ivacaftor combination, new indication for ivacaftor in 2015).
387 The high but more regular growth of mean expenditures attributed to prostate cancer can probably be
388 partly explained by the increased use of endocrine therapy and oral targeted therapies. The decline in
389 mean expenditure attributed to colorectal cancer and the increased number of patients can be
390 explained by the lower cost of several drugs during the study period and the use of a new screening
391 test introduced in 2015.

392 The data used to identify health conditions and individual calculated expenditures are accessible via
393 the SNDS to a large number of health system actors, which facilitates research on health services and
394 care pathways, health economics studies and territorial diagnoses allowing local adaptation of public
395 health policies. Each year, the DHEM is also used to enlighten health policies, particularly the public

396 health act and the social security funding bill. One of the main results for political decision-makers was
397 the prevalence and expenditures attributed to mental illness and psychoactive drug treatments, that
398 had previously been underestimated. Similar findings have been reported in many other countries (7,
399 8,12, 23). Our results therefore provided a basis for action proposals to parliament, especially
400 concerning the creation of specific healthcare provision to improve the management of somatic
401 comorbidities, specifically devoted to people with serious mental illness, and to improve the relevance
402 of psychoactive drug treatments. (24) An experimentation to evaluate the efficacy of psychotherapy as
403 a replacement for drug treatment for non-serious depression has also been initiated.

404 Future studies could assess the performances of the algorithms used to identify health conditions on
405 the basis of medical administrative data, that have been rarely studied in the world up until now, due to
406 the lack of gold standards. Clinical data derived from the CONSTANCES general population cohort
407 were used to evaluate diabetes identification algorithms in the SNDS, with very good performances for
408 the algorithms studied (including that used in the DHEM). (25,26) This type of cohort could be used
409 more systematically in the future to evaluate other disease identification algorithms. The use of
410 predictive models to identify diseases is also an alternative to algorithms that has not been extensively
411 studied to date. (27) Another line of research concerns the methods of attribution of expenditures to
412 health conditions. In countries in which individual data are available, expenditure modelling could more
413 reliably take into account the interactions between health conditions and expenditures. (9)

414

415 **Acknowledgements**

416 The authors are very grateful to Anne Cuerq, Marjorie Mazars, Alexandre Rigault, Solène Sansom and
417 Stéphane Tala for their contribution to the development of the DHEM, Anne-Sophie Agué for her
418 support and Moussa Laanani for reviewing this paper prior to submission.

419 **Funding**

420 This research was funded by French National Health Insurance (CNAM). All authors are employees of
421 a French public organization. All authors had full access to all of the data (including statistical reports
422 and tables) in the study and can take responsibility for the integrity of the data and the accuracy of
423 the data analysis.

424 The authors declare that they have no conflict of interest.

425

426

427 References

- 428 1. GBD 2017 Disease and Injury Incidence and Prevalence Collaborators. Global, regional, and
429 national incidence, prevalence, and years lived with disability for 354 diseases and injuries for
430 195 countries and territories, 1990-2017: a systematic analysis for the Global Burden of Disease
431 Study 2017. *Lancet*. 2018 10;392(10159):1789–858.
- 432 2. OECD, OCDE, EU, UE. Health at a Glance: Europe 2018: State of Health in the EU Cycle. OECD
433 Publishing; Éditions OCDE; European Union; Union européenne; 2018.
- 434 3. Dieleman JL, Squires E, Bui AL, Campbell M, Chapin A, Hamavid H, et al. Factors Associated With
435 Increases in US Health Care Spending, 1996-2013. *JAMA*. 2017 07;318(17):1668–78.
- 436 4. Thorpe KE. Treated disease prevalence and spending per treated case drove most of the growth
437 in health care spending in 1987-2009. *Health Aff (Millwood)*. 2013 May;32(5):851–8.
- 438 5. Roehrig CS, Rousseau DM. The growth in cost per case explains far more of US health spending
439 increases than rising disease prevalence. *Health Aff (Millwood)*. 2011 Sep;30(9):1657–63.
- 440 6. GBD 2017 Causes of Death Collaborators. Global, regional, and national age-sex-specific
441 mortality for 282 causes of death in 195 countries and territories, 1980-2017: a systematic
442 analysis for the Global Burden of Disease Study 2017. *Lancet*. 2018 10;392(10159):1736–88.
- 443 7. European Commission, Statistical Office of the European Union. HEDIC: health expenditures by
444 diseases and conditions: 2016 edition. [Internet]. Luxembourg: Publications Office; 2016 [cited
445 2020 Feb 19]. Available from:
446 <http://bookshop.europa.eu/uri?target=EUB:NOTICE:KSTC16008:EN:HTML>
- 447 8. Wieser S, Riguzzi M, Pletscher M, Huber CA, Telser H, Schwenkglenks M. How much does the
448 treatment of each major disease cost? A decomposition of Swiss National Health Accounts. *The
449 European Journal of Health Economics*. 2018 Nov;19(8):1149–61.
- 450 9. Blakely T, Kvizhinadze G, Atkinson J, Dieleman J, Clarke P. Health system costs for individual and
451 comorbid noncommunicable diseases: An analysis of publicly funded health events from New
452 Zealand. *PLoS Med* [Internet]. 2019 Jan 8 [cited 2019 Oct 11];16(1). Available from:
453 <https://www.ncbi.nlm.nih.gov/pmc/articles/PMC6324792/>
- 454 10. Dieleman JL, Baral R, Birger M, Bui AL, Bulchis A, Chapin A, et al. US Spending on Personal
455 Health Care and Public Health, 1996–2013. *JAMA*. 2016 Dec 27;316(24):2627–46.
- 456 11. Dunn A, Whitmire B, Batch A, Fernando L, Rittmueller L. High Spending Growth Rates For Key
457 Diseases In 2000-14 Were Driven By Technology And Demographic Factors. *Health Aff
458 (Millwood)*. 2018;37(6):915–24.
- 459 12. Kinge JM, Sælensminde K, Dieleman J, Vollset SE, Norheim OF. Economic losses and burden of
460 disease by medical conditions in Norway. *Health Policy*. 2017 Jun 1;121(6):691–8.
- 461 13. Paalanen L, Härkänen T, Tolonen H. Protocol of a research project ‘Projections of the burden of
462 disease and disability in Finland - health policy prospects’ using cross-sectional health surveys
463 and register-based follow-up. *BMJ Open*. 2019 Jun 20;9(6):e029338.

- 464 14. Gini R, Francesconi P, Mazzaglia G, Cricelli I, Pasqua A, Gallina P, et al. Chronic disease
465 prevalence from Italian administrative databases in the VALORE project: a validation through
466 comparison of population estimates with general practice databases and national survey. *BMC*
467 *Public Health*. 2013 Jan 9;13:15.
- 468 15. Renfro S, Lindner S, McConnell KJ. Decomposing Medicaid Spending During Health System
469 Reform and ACA Expansion: Evidence From Oregon. *Med Care*. 2018;56(7):589–95.
- 470 16. Tuppin P, Rudant J, Constantinou P, Gastaldi-Ménager C, Rachas A, de Roquefeuil L, et al. Value
471 of a national administrative database to guide public decisions: From the système national
472 d’information interrégimes de l’Assurance Maladie (SNIIRAM) to the système national des
473 données de santé (SNDS) in France. *Rev Epidemiol Sante Publique*. 2017 Jul 26;
- 474 17. Bousquet PJ, Lefevre D, Tuppin P, BenDiane MK, Rocchi M, Bouée-Benhamiche E, et al. Cancer
475 care and public health policy evaluations in France: Usefulness of the national cancer cohort.
476 Stepkowski S, editor. *PLOS ONE*. 2018 Oct 31;13(10):e0206448.
- 477 18. Thereaux J, Lesuffleur T, Czernichow S, Basdevant A, Msika S, Nocca D, et al. Long-term adverse
478 events after sleeve gastrectomy or gastric bypass: a 7-year nationwide, observational,
479 population-based, cohort study. *Lancet Diabetes Endocrinol*. 2019 Oct;7(10):786–95.
- 480 19. Rosen AB, Aizcorbe A, Highfill T, Chernew ME, Liebman E, Ghosh K, et al. Attribution of Health
481 Care Costs to Diseases: Does the Method Matter? *Measuring and Modeling Health Care Costs*.
482 2016 Dec 15;173–210.
- 483 20. Constantinou P, Tuppin P, Fagot-Campagna A, Gastaldi-Ménager C, Schellevis FG, Pelletier-
484 Fleury N. Two morbidity indices developed in a nationwide population permitted performant
485 outcome-specific severity adjustment. *J Clin Epidemiol*. 2018;103:60–70.
- 486 21. Goldberg M, Carton M, Doussin A, Fagot-Campagna A, Heyndrickx E, Lemaitre M, et al. [The
487 REDSIAM network]. *Rev Epidemiol Sante Publique*. 2017 Oct;65 Suppl 4:S144–8.
- 488 22. Manuel JJ. Racial/Ethnic and Gender Disparities in Health Care Use and Access. *Health Services*
489 *Research*. 2018 Jun;53(3):1407.
- 490 23. Roehrig C. Mental Disorders Top The List Of The Most Costly Conditions In The United States:
491 \$201 Billion. *Health Aff (Millwood)*. 2016 01;35(6):1130–5.
- 492 24. Améliorer la qualité du système de santé et maîtriser les dépenses: les propositions de
493 l’Assurance Maladie pour 2019 [Internet]. Caisse Nationale d’Assurance Maladie; 2018 Jul [cited
494 2020 Apr 12] p. 82–125. Available from: [https://assurance-
495 maladie.ameli.fr/sites/default/files/rapport-charges-et-produits-2019-web.pdf](https://assurance-maladie.ameli.fr/sites/default/files/rapport-charges-et-produits-2019-web.pdf)
- 496 25. Fuentes S, Cosson E, Mandereau-Bruno L, Fagot-Campagna A, Bernillon P, Goldberg M, et al.
497 Identifying diabetes cases in health administrative databases: a validation study based on a
498 large French cohort. *Int J Public Health*. 2019 Apr;64(3):441–50.
- 499 26. Zins M, Goldberg M, CONSTANCES team. The French CONSTANCES population-based cohort:
500 design, inclusion and follow-up. *Eur J Epidemiol*. 2015 Dec;30(12):1317–28.

501 27. Moisan F, Gourlet V, Mazurie J-L, Dupupet J-L, Houssinot J, Goldberg M, et al. Prediction model
502 of Parkinson's disease based on antiparkinsonian drug claims. *Am J Epidemiol.* 2011 Aug
503 1;174(3):354–63.

504

505 **Figures**

506 **Figure 1. Variations in the prevalence of categories of health conditions between 2012 and 2017**

507 Standardized prevalences according to the age and sex structure of the French population at
508 01/01/2018 (source: Institut National de la Statistique et des Etudes Economiques
509 <https://www.insee.fr/fr/statistiques>).

510 **Figure 2. Distribution of reimbursed expenditures by type of expenditure according to health condition in**
511 **2017**

512 **Figure 3. Sample sizes, mean reimbursed expenditures per year and per patient and total expenditures by**
513 **category of health conditions in 2017**

514 (a) without a diagnosis of cardiovascular disease, diabetes or end-stage renal disease
515 (b) without ICD-10 code (from hospitalisations or long-term disease registration)
516 (c) excluding cystic fibrosis
517 (d) excluding diseases, treatments, maternity care or hospitalisation
518 The size of bubbles is proportional to the total reimbursed expenditure. Bubbles for end-stage renal
519 disease, people with no identified health condition and routine care were not represented because
520 of very high mean expenditure and a very large sample size, respectively.

521 **Figure 4. Annual growth of total reimbursed expenditures between 2012 and 2017 by category of health**
522 **conditions**

523 (a) without a diagnosis of cardiovascular disease, diabetes or end-stage renal disease
524 (b) without ICD-10 code (from hospitalisations or long-term disease registration)
525 (c) excluding cystic fibrosis
526 (d) excluding diseases, treatments, maternity care or hospitalisation
527 The values indicated are the difference of total reimbursed expenditures attributed to the health
528 condition considered between years N and N-1.

529 **Figure 5. Mean annual growth rates, between 2012 and 2017, of total expenditures, number of patients and**
530 **mean expenditures per patient by category of health conditions.**

531 (a) without a diagnosis of cardiovascular disease, diabetes or end-stage renal disease
532 (b) without ICD-10 code (from hospitalisations or long-term disease registration)
533 (c) excluding cystic fibrosis
534 (d) excluding diseases, treatments, maternity care or hospitalisation

535 **Supplemental Material**

536 **Supplemental Table 1. Prevalences of health conditions by sex and age in 2017**

537 **Supplemental Figure 1. Growth of total expenditure attributed to liver and pancreatic diseases by type of**
538 **expenditure between 2012 and 2017**

539 **Supplemental Figure 2. Mean annual growth rates between 2012 and 2017 of total expenditures, number**
540 **of patients and mean expenditures per patient by health condition of the "cancers during the active**
541 **treatment phase" category.**

542 **Supplemental Figure 3. Growth of total expenditures attributed to prostate cancer during the active**
543 **treatment phase by type of expenditure between 2012 and 2017.**

544 **Supplemental Figure 4. Mean annual growth rates between 2012 and 2017 of total expenditures, number**
545 **of patients and mean expenditures per patient by health conditions of the "rare or inflammatory diseases or**
546 **HIV infection" category.**

547 **Supplemental Figure 5. Growth of total expenditure attributed to cystic fibrosis by type of expenditure**
548 **between 2012 and 2017.**

Table 1. Crude and age- and sex-standardised prevalences of health conditions in 2017

	n, thousand	crude Pr.	standardised Pr.*
Whole population (thousand)	N=57,600		
At least one health condition	25,967	45%	45%
Cardiovascular diseases	4016	7.00%	7.30%
Acute cardiovascular diseases	356	0.62%	0.64%
Acute coronary syndrome	81	0.14%	0.15%
Acute stroke	100	0.17%	0.18%
Acute heart failure	152	0.26%	0.27%
Acute pulmonary embolism	36	0.06%	0.06%
Chronic cardiovascular diseases	3897	6.80%	7.10%
Chronic coronary heart disease	1559	2.70%	2.80%
Sequelae of stroke	649	1.10%	1.20%
Chronic heart failure	520	0.90%	0.94%
Peripheral vascular diseases	597	1.00%	1.10%
Arrhythmia or conduction disorders	1357	2.40%	2.40%
Valvular heart disease	357	0.62%	0.64%
Other cardiovascular diseases	277	0.48%	0.50%
Cardiovascular risk treatment ^a	7307	12.70%	13.00%
Antihypertensive treatment ^a	6234	10.80%	11.10%
Lipid-lowering treatment ^a	2787	4.80%	5.00%
Diabetes	3237	5.60%	5.80%
Cancers	2637	4.60%	4.70%
Cancers during the active treatment phase	1189	2.10%	2.10%
Female breast cancer	193	0.62%	0.64%
Colorectal cancer	130	0.23%	0.23%
Lung cancer	80	0.14%	0.14%
Prostate cancer	170	0.64%	0.65%
Other cancers	671	1.20%	1.20%
Follow-up for cancer	1529	2.70%	2.70%
Female breast cancer	421	1.40%	1.40%
Colorectal cancer	165	0.29%	0.30%
Lung cancer	42	0.07%	0.08%
Prostate cancer	233	0.87%	0.90%
Other cancers	734	1.30%	1.30%
Mental illness	2190	3.80%	3.90%
Psychotic disorders	430	0.75%	0.76%
Neurotic and mood disorders	1199	2.10%	2.10%
Mental impairment	127	0.22%	0.22%
Addictive disorders	387	0.67%	0.70%
Mental illness starting in childhood	142	0.25%	0.25%
Other mental illness	410	0.71%	0.72%
Chronic psychoactive drug treatment ^b	5013	8.70%	8.80%
Antidepressant or mood-regulating treatments ^b	2598	4.50%	4.50%
Neuroleptic treatments ^b	286	0.50%	0.51%
Anxiolytic treatments ^b	2787	4.80%	4.90%
Hypnotic treatments ^b	1259	2.20%	2.20%
Neurological or degenerative diseases	1370	2.40%	2.40%
Dementia	613	1.10%	1.10%
Parkinson disease	215	0.37%	0.39%
Multiple sclerosis	98	0.17%	0.17%
Paraplegia	85	0.15%	0.15%
Myopathy or myasthenia	41	0.07%	0.07%
Epilepsy	292	0.51%	0.51%
Other neurological conditions	145	0.25%	0.25%
Chronic respiratory diseases ^c	3141	5.50%	5.50%
Inflammatory or rare diseases or HIV infection	1053	1.80%	0.40%
Inflammatory bowel diseases	227	0.39%	0.40%
Rheumatoid arthritis and related diseases	244	0.42%	0.43%
Ankylosing spondylitis and related diseases	182	0.32%	0.32%

Other chronic inflammatory diseases	173	0.30%	0.30%
Hereditary metabolic diseases or amyloidosis	99	0.17%	0.18%
Cystic fibrosis	8	0.01%	0.01%
Haemophilia or severe coagulation disorders	42	0.07%	0.07%
HIV infection	132	0.23%	0.18%
End-stage renal disease	82	0.14%	0.15%
Chronic dialysis	45	0.08%	0.08%
Kidney transplant	3	0.01%	0.01%
Follow-up for kidney transplant	34	0.06%	0.06%
Liver or pancreatic diseases ^c	512	0.89%	0.92%
Other long-term diseases	1479	2.60%	0.39%
Maternity	1222	9.10%	8.90%
Hospitalisation for other reasons	8052	14.00%	0.24%
Analgesic or NSAID treatment ^d	1346	2.30%	2.30%

*standardisation according to sex and age based on estimations of the French population by *Institut National de la Statistique et des Etudes Economiques* on 01/01/2018.

**prevalences among men or women only, as appropriate.

^a without a diagnosis of cardiovascular disease, diabetes or ESRD. ^b without a diagnosis of mental illness. ^c excluding cystic fibrosis. ^d excluding diseases, treatments, maternity care or hospitalisation. Abbreviations: ESRD, end-stage renal disease; NSAID, non steroidal anti inflammatory drugs

Table 2. Distribution of total reimbursed expenditures (€140.1 billion) by health condition in 2017

	Reimbursed expenditures	
	Total (in billion €)	Proportion
Cardiovascular diseases	14.00	10%
Acute cardiovascular diseases	3.45	2.5%
Acute coronary syndrome	0.82	0.58%
Acute stroke	1.26	0.90%
Acute heart failure	1.20	0.85%
Acute pulmonary embolism	0.18	0.13%
Chronic cardiovascular diseases	10.55	7.5%
Chronic coronary heart disease	2.76	2.0%
Sequelae of stroke	1.78	1.3%
Chronic heart failure	1.12	0.80%
Peripheral vascular diseases	1.55	1.1%
Arrhythmia or conduction disorders	1.86	1.3%
Valvular heart disease	1.00	0.71%
Other cardiovascular diseases	0.48	0.35%
Cardiovascular risk treatment ^a	4.84	3.5%
Antihypertensive treatment ^a	3.56	2.5%
Lipid-lowering treatment ^a	1.28	0.91%
Diabetes	6.99	5.0%
Cancers	15.59	11%
Cancers during the active treatment phase	13.97	10%
Female breast cancer	2.40	1.7%
Colorectal cancer	1.43	1.0%
Lung cancer	1.60	1.1%
Prostate cancer	1.07	0.76%
Other cancers	7.47	5.3%
Follow-up for cancer	1.62	1.2%
Female breast cancer	0.48	0.34%
Colorectal cancer	0.17	0.12%
Lung cancer	0.07	0.05%
Prostate cancer	0.16	0.12%
Other cancers	0.74	0.53%
Mental illness	14.53	10%
Psychotic disorders	4.44	3.2%
Neurotic and mood disorders	5.31	3.8%
Mental impairment	0.57	0.41%
Addictive disorders	1.39	0.99%
Mental illness starting in childhood	1.19	0.85%
Other mental illness	1.63	1.2%
Chronic psychoactive drug treatment ^b	5.81	4.1%
Antidepressant or mood-regulating treatments ^b	2.44	1.7%
Neuroleptic treatments ^b	0.25	0.18%
Anxiolytic treatments ^b	2.20	1.6%
Hypnotic treatments ^b	0.93	0.66%
Neurological or degenerative diseases	6.39	4.6%
Dementia	2.08	1.5%
Parkinson disease	0.85	0.61%
Multiple sclerosis	1.13	0.81%
Paraplegia	0.99	0.71%
Myopathy or myasthenia	0.22	0.16%
Epilepsy	0.51	0.36%
Other neurological conditions	0.62	0.44%
Chronic respiratory diseases ^c	2.95	2.1%
Inflammatory or rare diseases or HIV infection	5.34	3.8%
Inflammatory bowel diseases	0.85	0.61%
Rheumatoid arthritis and related diseases	0.82	0.59%
Ankylosing spondylitis and related diseases	0.79	0.56%
Other chronic inflammatory diseases	0.37	0.26%
Hereditary metabolic diseases or amyloidosis	0.47	0.34%

Cystic fibrosis	0.27	0.20%
Haemophilia or severe coagulation disorders	0.48	0.34%
HIV infection	1.28	0.91%
End-stage renal disease	3.49	2.5%
Chronic dialysis	2.79	2.0%
Kidney transplant	0.22	0.16%
Follow-up for kidney transplant	0.47	0.34%
Liver or pancreatic diseases ^c	1.79	1.3%
Other long-term diseases	3.40	2.4%
Maternity	7.75	5.5%
Hospitalisation for other reasons	31.32	22%
Analgesic or NSAID treatment ^d	14.00	10%
Usual Care	5.19	3.7%
No health condition identified	9.27	6.6%

^a without a diagnosis of cardiovascular disease, diabetes or ESRD. ^b without a diagnosis of mental illness. ^c excluding cystic fibrosis. ^d excluding diseases, treatments, maternity care or hospitalisation. Abbreviations: ESRD, end-stage renal disease; NSAID, non steroidal anti inflammatory drugs.

Figure 1. Variations in the prevalence of categories of health conditions between 2012 and 2017

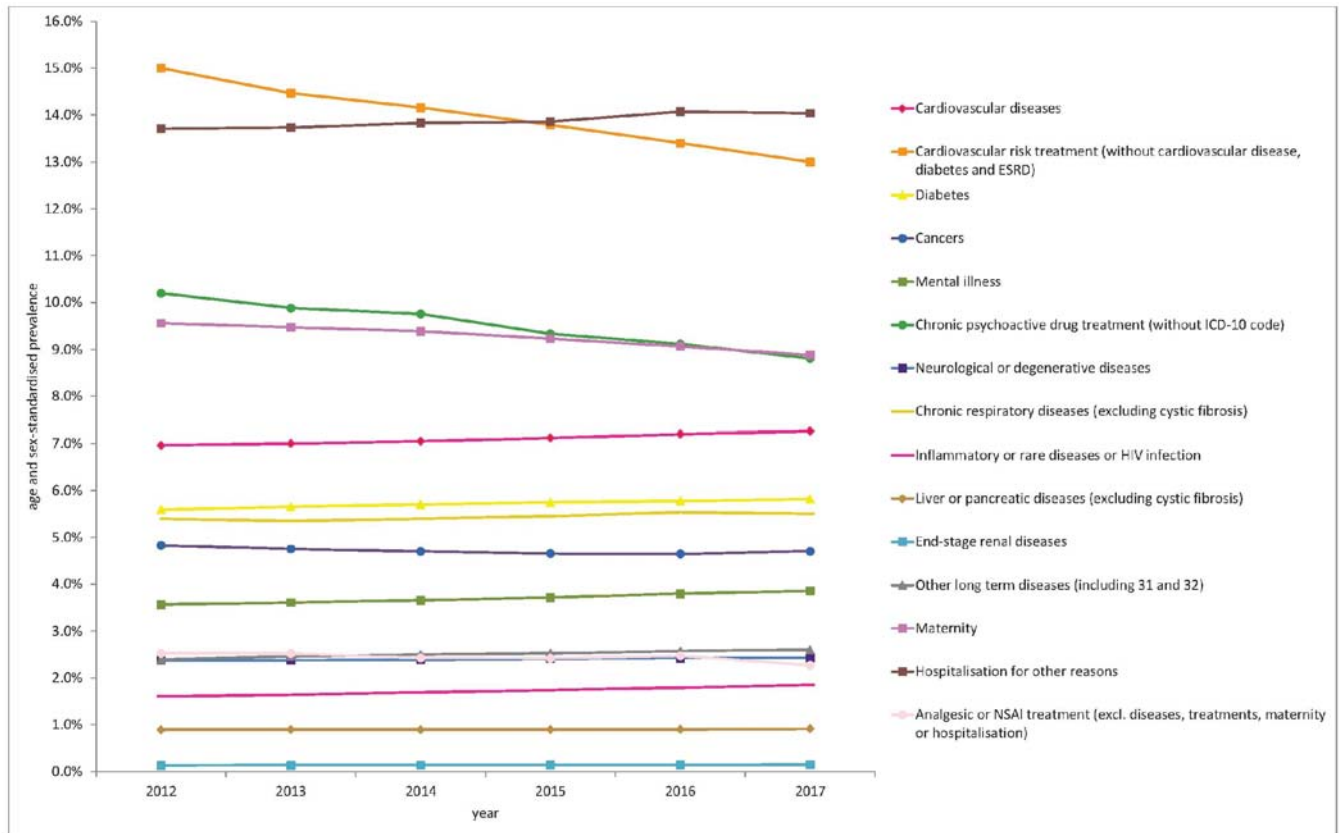


Figure 2. Distribution of reimbursed expenditures by type of expenditure according to health condition in 2017

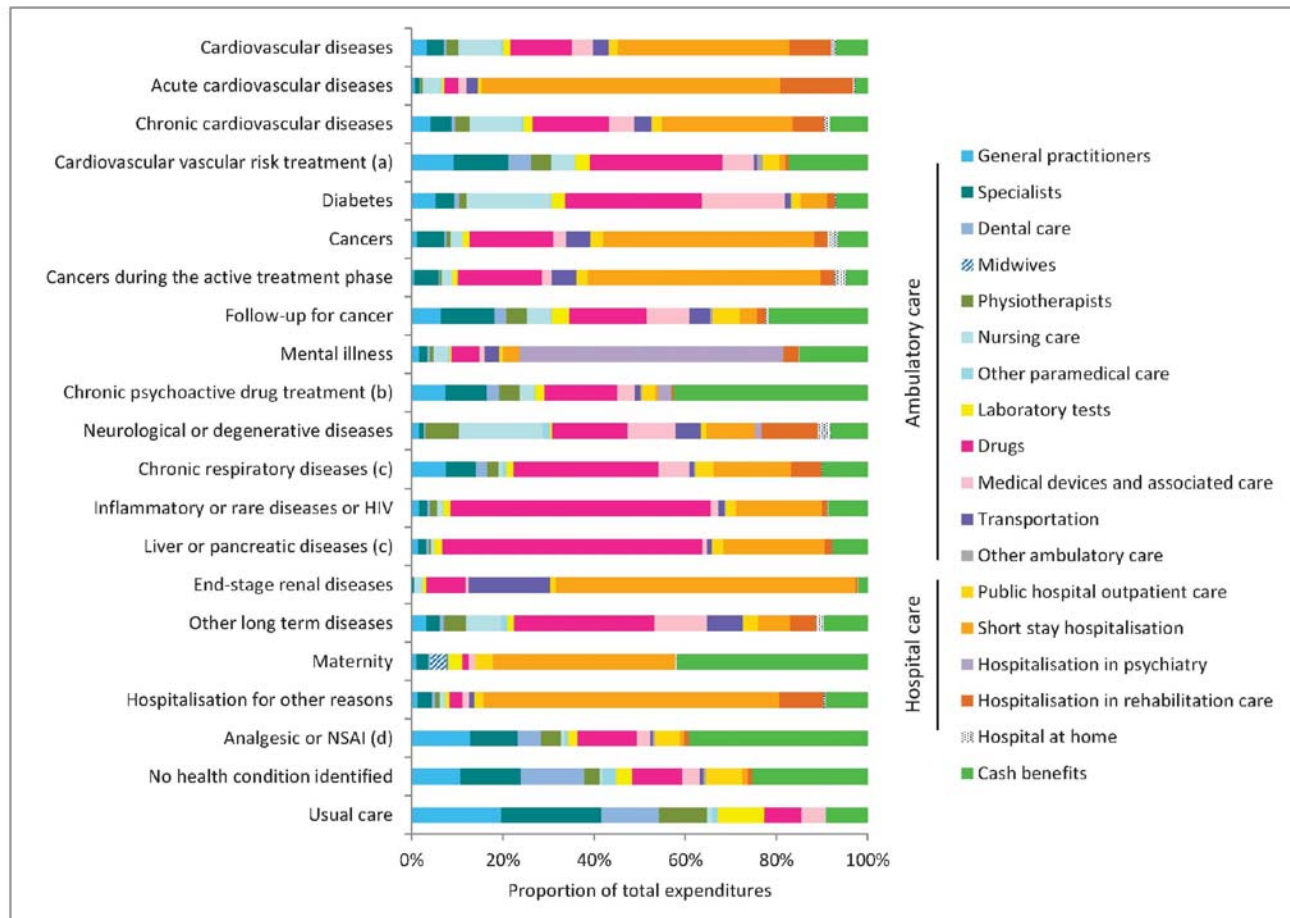


Figure 3. Sample sizes, mean reimbursed expenditures per year and per patient and total expenditures by category of health conditions in 2017

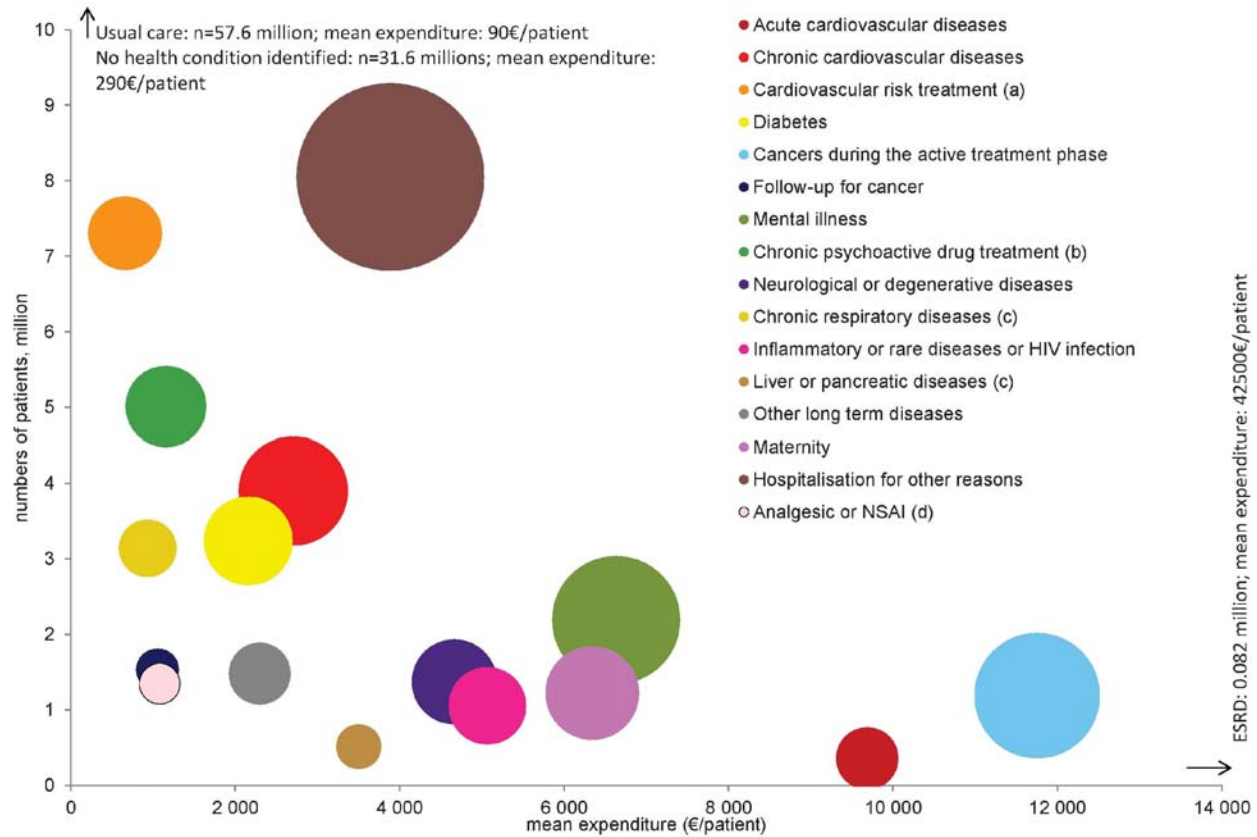


Figure 4. Annual growth of total reimbursed expenditures between 2012 and 2017 by category of health conditions

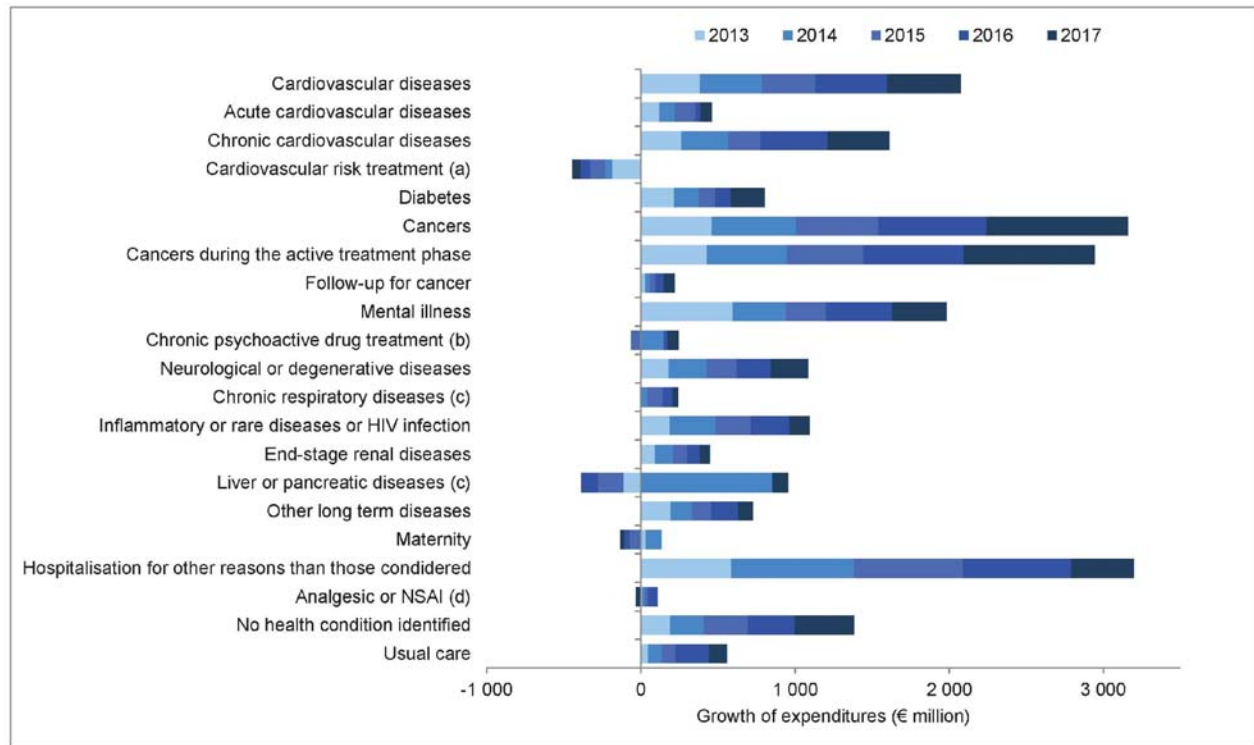
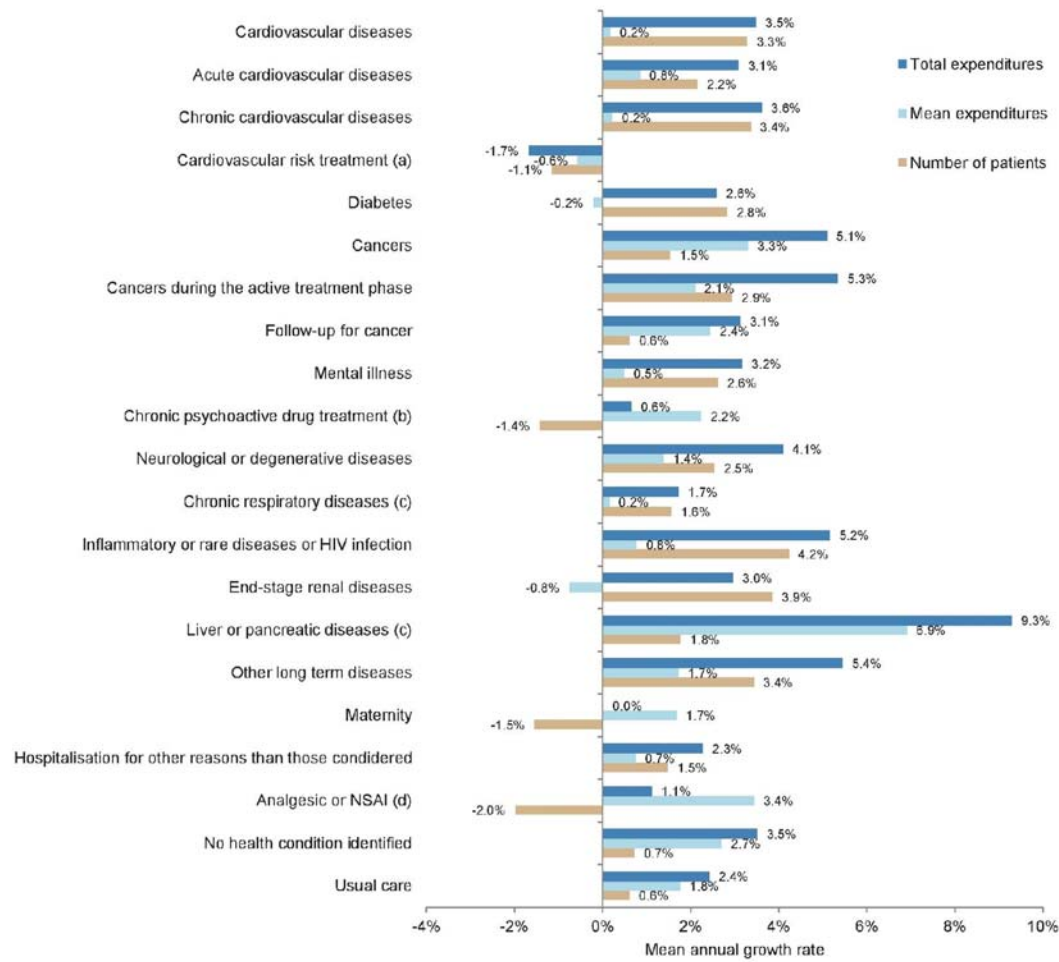


Figure 5. Mean annual growth rates, between 2012 and 2017, of total expenditures, number of patients and mean expenditures per patient by category of health conditions.



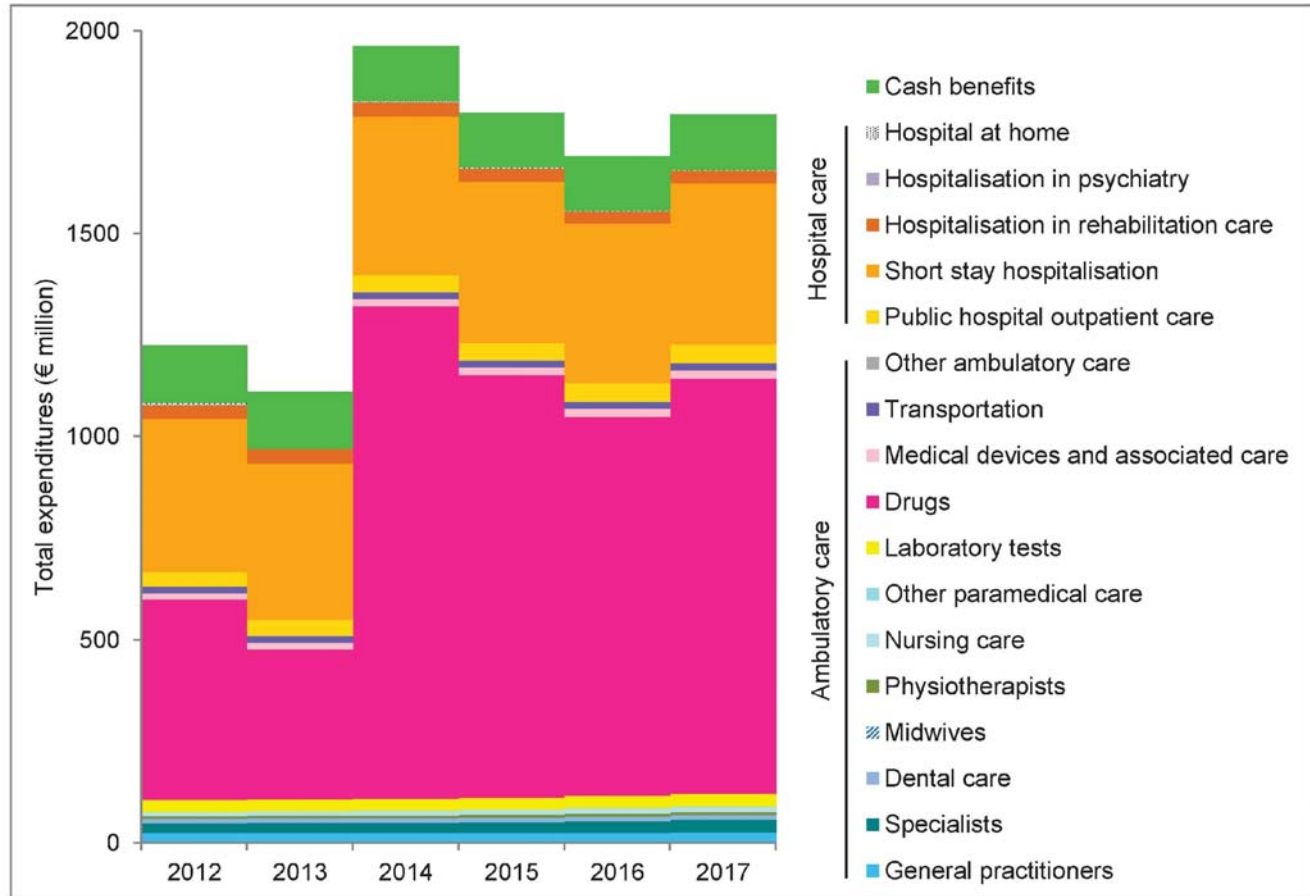
Supplemental Table 1. Prevalences of health conditions by sex and age in 2017

	women							men						
	all ages	0-14	15-34	35-54	55-64	65-74	75+	all ages	0-14	15-34	35-54	55-64	65-74	75+
Whole population (thousand)	30,928	5,237	7,440	8,011	3,827	3,234	3,179	26,672	5,489	6,538	6,895	3,191	2,654	1,905
At least one health condition	48	20	31	44	64	78	93	42	24	18	37	66	82	93
Cardiovascular diseases	5.5	0.28	0.45	1.7	5.2	10	31	8.7	0.34	0.56	3.6	14	26	46
Acute cardiovascular diseases	0.55	<0.01	0.031	0.14	0.36	0.79	3.6	0.70	<0.01	0.036	0.34	0.98	1.7	4.4
Acute coronary syndrome	0.086	<0.01	<0.01	0.036	0.10	0.17	0.45	0.21	<0.01	<0.01	0.17	0.41	0.53	0.80
Acute stroke	0.16	<0.01	0.012	0.057	0.12	0.26	0.99	0.19	<0.01	0.014	0.090	0.27	0.49	1.1
Acute heart failure	0.26	<0.01	<0.01	0.020	0.087	0.27	2.0	0.27	<0.01	<0.01	0.047	0.23	0.59	2.4
Acute pulmonary embolism	0.063	<0.01	0.013	0.031	0.055	0.12	0.31	0.062	<0.01	0.010	0.043	0.10	0.16	0.28
Chronic cardiovascular diseases	5.3	0.28	0.43	1.6	5.0	10	30	8.5	0.33	0.53	3.4	14	25	45
Chronic coronary heart disease	1.6	<0.01	0.019	0.40	1.7	3.4	8.9	4.0	<0.01	0.045	1.5	7.1	13	20
Sequelae of stroke	1.0	0.047	0.10	0.47	1.1	1.8	5.3	1.2	0.065	0.12	0.57	1.9	3.4	6.8
Chronic heart failure	0.87	0.024	0.021	0.11	0.44	1.1	6.4	0.95	0.025	0.031	0.25	1.1	2.3	7.1
Peripheral vascular diseases	0.64	<0.01	0.014	0.16	0.70	1.2	3.7	1.5	<0.01	0.016	0.41	2.8	5.0	7.8
Arrhythmia or conduction disorders	2.1	0.058	0.17	0.40	1.2	3.5	14	2.7	0.069	0.20	0.70	2.8	7.2	19
Valvular heart disease	0.57	0.015	0.033	0.13	0.42	1.0	3.5	0.68	0.018	0.045	0.22	0.79	1.8	4.6
Other cardiovascular diseases	0.37	0.16	0.10	0.17	0.39	0.67	1.5	0.61	0.18	0.13	0.27	0.87	1.7	2.8
Cardiovascular risk treatment ^a	14	0.044	0.86	8.7	26	39	44	11	0.057	0.73	8.8	25	32	32
Antihypertensive treatment ^a	12	0.038	0.78	7.7	21	32	40	9.1	0.051	0.63	7.1	20	27	28
Lipid-lowering treatment ^a	5.1	<0.01	0.091	1.6	9.2	18	17	4.5	<0.01	0.12	3.0	10	15	14
Diabetes	4.9	0.13	0.56	2.6	8.4	13	16	6.4	0.13	0.54	3.6	13	21	23
Cancers	4.6	0.10	0.56	3.3	7.4	11	14	4.5	0.12	0.36	1.6	6.6	15	25
Cancers during the active treatment phase	1.9	0.050	0.27	1.5	3.0	4.6	5.5	2.3	0.057	0.17	0.813	3.6	7.6	12
Female breast cancer	0.62	<0.01	0.036	0.67	1.2	1.6	1.3							
Colorectal cancer	0.19	<0.01	<0.01	0.084	0.30	0.54	0.72	0.26	<0.01	<0.01	0.093	0.47	0.96	1.2
Lung cancer	0.094	<0.01	<0.01	0.051	0.22	0.28	0.22	0.19	<0.01	<0.01	0.071	0.43	0.72	0.67
Prostate cancer								0.64	<0.01	<0.01	0.064	0.82	2.4	4.0
Other cancers	1.0	0.049	0.22	0.70	1.5	2.4	3.6	1.3	0.057	0.16	0.60	2.1	3.9	6.6
Follow-up for cancer	2.8	0.050	0.29	1.8	4.6	7.2	9.4	2.4	0.059	0.19	0.78	3.2	7.9	14
Female breast cancer	1.4	<0.01	0.016	0.81	2.5	3.9	4.2							
Colorectal cancer	0.27	<0.01	<0.01	0.075	0.32	0.66	1.3	0.31	<0.01	<0.01	0.073	0.40	1.0	2.0
Lung cancer	0.049	<0.01	<0.01	0.021	0.11	0.15	0.14	0.10	<0.01	<0.01	0.024	0.18	0.38	0.46
Prostate cancer								0.87	<0.01	<0.01	0.026	0.79	3.3	6.2
Other cancers	1.3	0.049	0.27	0.97	1.8	2.8	4.2	1.3	0.058	0.19	0.66	1.9	3.6	6.5
Mental illness	3.9	0.65	2.0	4.3	6.2	5.6	8.1	3.7	1.5	2.7	5.1	5.6	4.2	4.9
Psychotic disorders	0.63	<0.01	0.32	0.87	1.1	0.94	0.92	0.89	0.020	0.82	1.6	1.2	0.79	0.52
Neurotic and mood disorders	2.6	0.10	1.1	2.9	4.3	3.9	6.1	1.5	0.10	0.84	2.1	2.7	2.0	2.7
Mental impairment	0.18	0.13	0.16	0.24	0.28	0.18	0.075	0.26	0.22	0.25	0.33	0.36	0.20	0.077
Addictive disorders	0.39	<0.01	0.28	0.58	0.69	0.51	0.32	1.0	<0.01	0.74	1.7	1.8	1.2	0.76

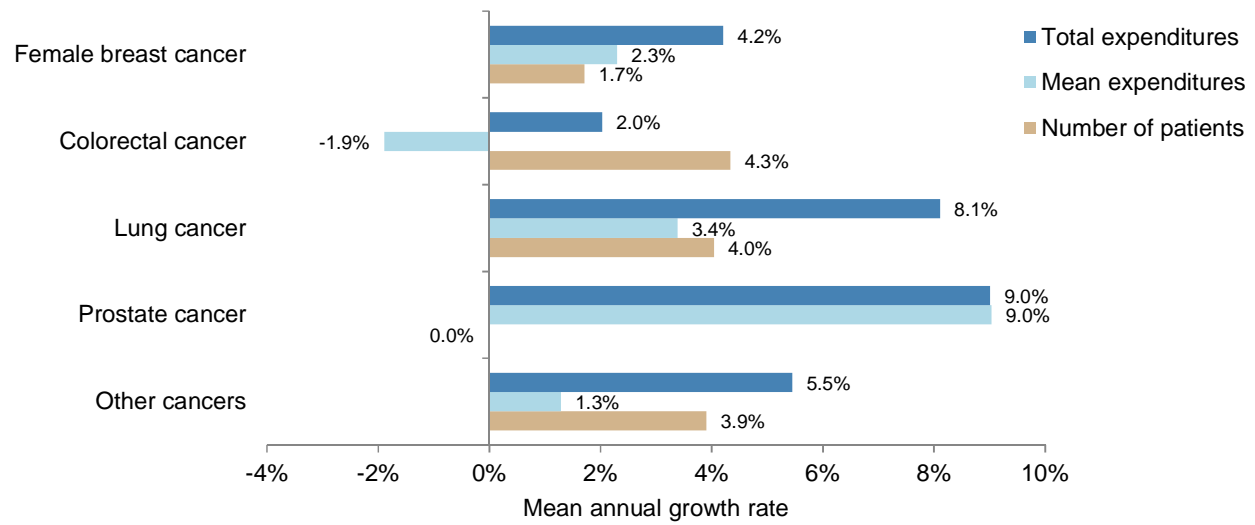
Mental illness starting in childhood	0.14	0.39	0.20	0.057	0.038	0.022	0.023	0.37	1.1	0.43	0.10	0.054	0.023	0.021
Other mental illness	0.77	0.077	0.56	0.82	1.0	1.0	1.7	0.65	0.13	0.52	0.85	0.87	0.76	1.4
Chronic psychoactive drug treatment ^b	11	0.10	2.8	11	17	21	32	6.1	0.21	1.8	6.4	10	13	20
Antidepressant or mood-regulating treatments ^b	6.0	0.024	1.8	7.1	9.8	10	14	2.8	0.032	0.99	3.6	5.0	4.9	8.0
Neuroleptic treatments ^b	0.49	0.028	0.15	0.41	0.60	0.68	2.0	0.50	0.12	0.31	0.58	0.66	0.65	1.4
Anxiolytic treatments ^b	6.1	0.057	1.5	5.7	9.2	12	18	3.4	0.075	0.95	3.6	5.9	7.1	11
Hypnotic treatments ^b	2.7	<0.01	0.32	1.9	4.0	5.9	9.5	1.6	<0.01	0.24	1.3	2.9	4.2	6.7
Neurological or degenerative diseases	2.6	0.44	0.74	1.3	1.8	2.8	15	2.1	0.53	0.84	1.4	2.1	3.4	12
Dementia	1.4	<0.01	<0.01	0.030	0.17	0.89	12	0.71	<0.01	<0.01	0.045	0.23	0.97	8.0
Parkinson disease	0.36	<0.01	<0.01	0.055	0.25	0.75	2.2	0.39	<0.01	<0.01	0.061	0.33	1.1	3.2
Multiple sclerosis	0.23	<0.01	0.13	0.41	0.42	0.29	0.12	0.10	<0.01	0.055	0.18	0.18	0.14	0.059
Paraplegia	0.12	0.030	0.068	0.14	0.20	0.20	0.18	0.18	0.038	0.11	0.22	0.28	0.29	0.27
Myopathy or myasthenia	0.069	0.020	0.044	0.082	0.094	0.10	0.11	0.076	0.036	0.061	0.079	0.10	0.11	0.13
Epilepsy	0.45	0.30	0.37	0.42	0.48	0.49	0.87	0.57	0.35	0.45	0.61	0.76	0.71	0.98
Other neurological conditions	0.23	0.12	0.17	0.23	0.32	0.33	0.40	0.27	0.14	0.21	0.26	0.39	0.42	0.50
Chronic respiratory diseases ^c	5.2	4.1	2.5	4.3	7.0	8.3	11	5.7	6.3	2.3	3.6	7.2	10	14
Inflammatory or rare diseases or HIV infection	2.0	0.26	0.98	2.4	3.0	3.2	3.7	1.6	0.28	0.88	2.1	2.8	2.8	3.1
Inflammatory bowel diseases	0.40	0.022	0.40	0.61	0.52	0.41	0.34	0.39	0.024	0.36	0.53	0.58	0.56	0.45
Rheumatoid arthritis and related diseases	0.58	0.045	0.11	0.46	1.0	1.3	1.6	0.24	0.020	0.037	0.16	0.44	0.64	0.91
Ankylosing spondylitis and related diseases	0.31	0.010	0.15	0.50	0.56	0.43	0.28	0.32	<0.01	0.15	0.48	0.58	0.55	0.48
Other chronic inflammatory diseases	0.42	0.039	0.14	0.40	0.58	0.77	1.2	0.16	0.047	0.042	0.11	0.21	0.37	0.73
Hereditary metabolic diseases or amyloidosis	0.15	0.10	0.085	0.13	0.19	0.27	0.27	0.20	0.11	0.090	0.16	0.31	0.41	0.41
Cystic fibrosis	0.012	0.022	0.021	<0.01	<0.01	<0.01	<0.01	0.015	0.023	0.027	0.011	<0.01	<0.01	<0.01
Haemophilia or severe coagulation disorders	0.071	0.014	0.041	0.086	0.10	0.11	0.13	0.075	0.041	0.050	0.073	0.10	0.13	0.15
HIV infection	0.15	0.011	0.083	0.34	0.21	0.084	0.029	0.32	0.010	0.16	0.65	0.66	0.29	0.11
End-stage renal disease	0.11	<0.01	0.026	0.093	0.18	0.24	0.28	0.18	<0.01	0.041	0.16	0.31	0.46	0.67
Chronic dialysis	0.059	<0.01	<0.01	0.031	0.076	0.14	0.24	0.10	<0.01	0.010	0.050	0.14	0.27	0.58
Kidney transplant	<0.01	<0.01	<0.01	<0.01	<0.01	<0.01	<0.01	<0.01	<0.01	<0.01	0.011	0.014	0.016	<0.01
Follow-up for kidney transplant	0.044	<0.01	0.016	0.056	0.091	0.095	0.035	0.076	<0.01	0.027	0.10	0.16	0.18	0.085
Liver or pancreatic diseases ^c	0.73	0.041	0.28	0.71	1.3	1.5	1.5	1.1	0.042	0.28	1.3	2.3	2.3	2.1
Other long-term diseases	2.8	1.1	1.4	1.8	3.2	4.5	9.6	2.2	1.3	1.4	1.5	2.8	4.1	7.0
Maternity	9.1	0	12	5.5	0	0	0							
Hospitalisation for other reasons	14	9.9	9.2	13	16	21	27	14	12	8.4	11	17	23	30
Analgesic or NSAID treatment ^d	2.7	4.2	2.4	3.4	2.3	1.6	1.0	1.9	3.9	0.98	2.0	1.4	0.87	0.59

Data are % unless otherwise specified. ^a without a diagnosis of cardiovascular disease, diabetes or ESRD. ^b without a diagnosis of mental illness. ^c excluding cystic fibrosis. ^d excluding diseases, treatments, maternity care or hospitalisation. Abbreviations: ESRD, end-stage renal disease; NSAID, non steroidal anti inflammatory drugs

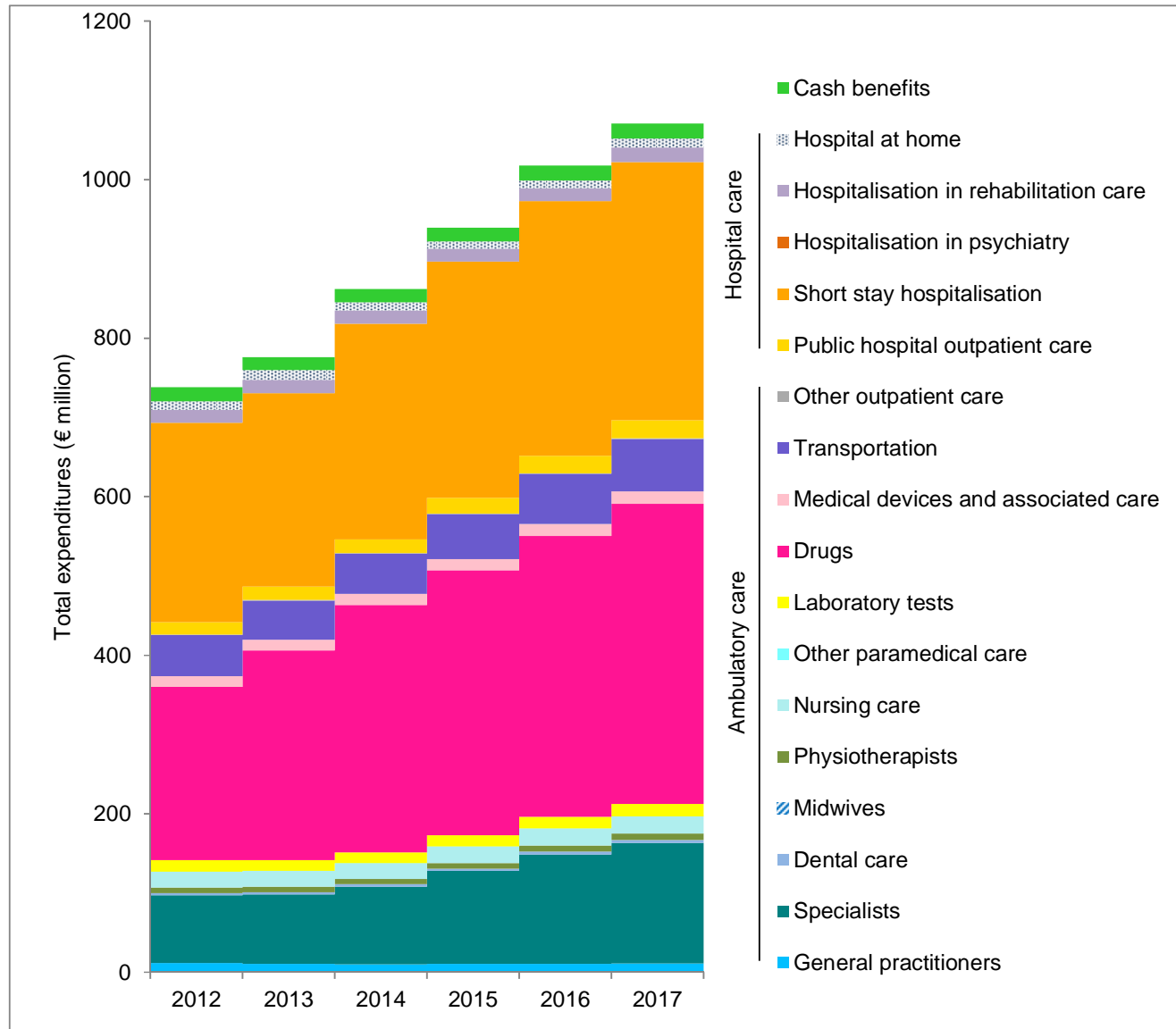
Supplemental Figure 1. Growth of total expenditure attributed to liver and pancreatic diseases by type of expenditure between 2012 and 2017



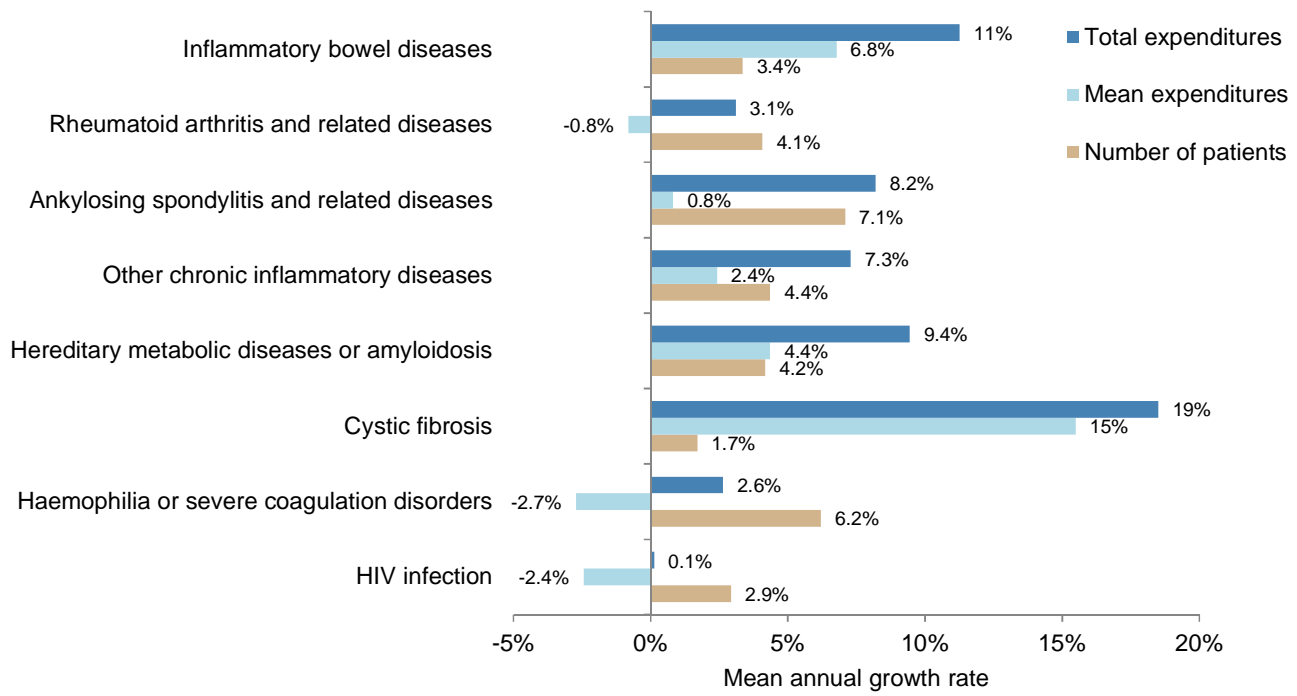
Supplemental Figure 2. Mean annual growth rates between 2012 and 2017 of total expenditures, number of patients and mean expenditures per patient by health condition of the "cancers during the active treatment phase" category.



Supplemental Figure 3. Growth of total expenditures attributed to prostate cancer during the active treatment phase by type of expenditure between 2012 and 2017.



Supplemental Figure 4. Mean annual growth rates between 2012 and 2017 of total expenditures, number of patients and mean expenditures per patient by health conditions of the "rare or inflammatory diseases or HIV infection" category.



Supplemental Figure 5. Growth of total expenditure attributed to cystic fibrosis by type of expenditure between 2012 and 2017.

