

Title:

Analysis of presence and short-term persistence of SARS-CoV-2 neutralizing antibodies in COVID-19 convalescent plasma donors.

Authors:

*Kyle Annen, D.O.¹

*Thomas E. Morrison, Ph.D.²

Melkon G. DomBourian, M.D.¹

Mary K. McCarthy, Ph.D.²

Leah Huey, B.S.³

Patricia Merkel, M.S.³

Gillian Andersen, M.S., MT(ASCP)¹

Eileen Schwartz, RN¹

Vijaya Knight, M.D., Ph.D.^{3, #}

*Co-first authors

¹Department of Pathology and Laboratory Medicine, University of Colorado School of Medicine and Children's Hospital, Colorado

²Department of Immunology and Microbiology, University of Colorado School of Medicine

³ Department of Pediatrics, Section of Allergy and Immunology, University of Colorado School of Medicine and Children's Hospital, Colorado.

Corresponding author

Key Words: COVID-19, SARS-COV-2, convalescent plasma, neutralizing antibody

1 **Abstract**

2 In March 2020, the FDA approved the use of COVID-19 convalescent plasma (CCP) as
3 an investigational new drug for treatment of COVID-19. Since then, collection of CCP
4 from COVID-19 recovered patients has been implemented in several donor centers
5 across the country. Children's Hospital Colorado rapidly put into practice a CCP
6 collection protocol, necessitating the development and implementation of assays to
7 evaluate SARS-CoV-2 antibodies in CCP units. We evaluated 87 separate units of CCP
8 collected from 36 donors over two to four sequential donations using both antigen-
9 binding assays for SARS-CoV-2 nucleoprotein and spike antigens, and a live virus
10 focus reduction neutralization test (FRNT50). Our data shows that the majority of
11 donors (83%) had a FRNT50 titer of 1:80 or greater, and 61% had a titer \geq 1:160, which
12 meet the FDA's criteria for acceptable CCP units. Additionally, our data indicates that
13 analysis of antibodies to a single SARS-CoV-2 antigen is likely to miss a percentage of
14 seroconverters; however, these individuals tend to have neutralizing antibody titers of
15 $<1:80$. Of note, there was considerable variability in the short term, sustained antibody
16 response, measured by neutralizing antibody titers, among our donor population.

17 **Introduction**

18 The Food and Drug Administration (FDA) authorized the use of COVID-19 convalescent
19 plasma (CCP) as an investigational new drug for the treatment of COVID-19 (1).

20 Initially, convalescent plasma donors were accepted only with a confirmed SARS-CoV-2
21 positive PCR. Donors were required to be symptom-free for at least 14 days prior to
22 donation, SARS-CoV-2 PCR negative upon subsequent testing, and meet all other
23 blood donation eligibility requirements (2). The most recent guidance dropped the
24 requirement for a negative diagnostic test to qualify donors and describes an additional
25 pathway for CCP donors to be deemed eligible to donate: a confirmed positive SARS-
26 CoV-2-specific IgG based serology test (1).

27 During the early stages of the COVID-19 crises in the U.S., Children's Hospital of
28 Colorado (CHCO) rapidly developed and implemented protocols for the collection of
29 CCP. Since our first collection on March 31, 2020, we have collected 548 CCP units.
30 During the beginning phase of CCP collection, a primary challenge was identifying
31 donors who met the SARS-CoV-2 PCR positive test and symptom resolution criteria
32 (i.e., asymptomatic for 14 days or more). Although the FDA previously established that
33 plasma for the purpose of transfusion be collected no more frequently than every 28
34 days (3), the FDA has allowed for more frequent blood collection at the discretion of the
35 donation center medical director (personal correspondence Peter Marks, April 16,
36 2020). This exception could significantly improve access to CCP by allowing for an
37 earlier return of donors who had previously been successfully screened and tested.
38 Since coagulation factors, such as fibrinogen and albumin, are expected to be replaced
39 in a donor's plasma within one week(4), several donation centers in the country,

40 including CHCO, allowed repeat convalescent plasma donors as frequently as every 7
41 days. However, the impact on the donors anti-SARS-CoV-2 antibody levels with this
42 frequency of donation, or any frequency, is unknown, as is the pattern of decline or
43 retention of antibodies to SARS-CoV-2.

44 A number of assays for detection of SARS-CoV-2 antibodies, including ELISA, high
45 throughput immunoassay platforms, and rapid detection lateral flow assays became
46 available in late March, enabling relatively rapid screening of CCP units for the
47 presence of anti-SARS-CoV-2 antibodies, commonly to either the SARS-CoV-2
48 nucleocapsid or spike antigens, such as the S1 and receptor binding domain (RBD) of
49 the spike protein (5, 6). However, FDA recommendations state that CCP units that are
50 eligible for transfusion into COVID-19 patients should have a neutralizing antibody titer
51 of at least 1:80, and preferably 1:160 (2). This guidance poses challenges for
52 laboratories that are screening CCP units for SARS-CoV-2 antibodies with antigen
53 binding assays, many of which are primarily qualitative in nature, and do not provide
54 information regarding potential for SARS-CoV-2 neutralization. Therefore, a comparison
55 of antigen binding assays with virus neutralizing antibody titer is increasingly important
56 to enable triage of CCP units and to develop criteria for units that are suitable for
57 transfusion into patients with COVID-19.

58 Here, we compare two ELISA assays, both currently implemented in clinical laboratories
59 for clinical diagnostics and for screening of CCP, with a SARS-CoV-2 virus
60 neutralization assay in our CCP donor population. As CCP donors are currently
61 permitted to return for relatively frequent plasma donations, we have additionally
62 examined the persistence of SARS-CoV-2 antibodies using the neutralizing antibody

63 assay. These data contribute to our understanding of the neutralizing antibody response
64 to SARS-CoV-2, its correlation with development of N and S1 binding antibodies,
65 persistence of the neutralizing antibody response, and ultimately strengthen the criteria
66 for CCP donors and analysis of CCP as a therapeutic for COVID-19.

67

68 **Materials and Methods**

69 **COVID-19 convalescent plasma donors.** SARS-CoV-2 PCR positive individuals who
70 were eligible to donate plasma according to FDA criteria for CCP donors were enrolled
71 under the CHCO CCP donor program. Aliquots of plasma and serum were stored
72 at -80°C until analysis.

73 **SARS-CoV-2 IgG ELISA.** Two commercial ELISAs, CE-marked Epitope Diagnostics
74 Inc. (EDI, San Diego, CA) and Euroimmun (both CE-marked and FDA EUA approved,
75 Lubeck, Germany) were utilized in this study. Both of the ELISAs report results
76 qualitatively, based on a single dilution. The EDI ELISA utilizes a SARS-CoV-2
77 recombinant nucleocapsid (N) protein as the coating antigen. Positive and negative
78 assay controls and samples were diluted 1:100 with the kit-specific COVID-19 IgG
79 sample diluent and added to the wells, followed by a 30 min incubation at room
80 temperature. Plates were washed five times using the kit-specific wash buffer and anti-
81 human IgG horse radish peroxidase (HRP)-conjugated detection antibody was added,
82 followed by a 30 min incubation. Plates were washed five times, and the signal was
83 developed using tetramethylbenzidine (TMB). Absorbance was read at 450 nm within
84 10 min of halting the reaction.

85 The Euroimmun ELISA assay utilizes the S1 domain, which includes the receptor
86 binding domain (RBD) of the SARS-CoV-2 spike protein (7). For this assay, a kit-
87 specific calibrator, positive and negative controls and samples, were diluted 1:101 with
88 the kit-specific dilution buffer and added to pre-coated wells. Following a 1 h incubation
89 at 37°C, plates were washed three times with kit-specific wash buffer. Anti-human IgG-
90 HRP conjugated detection antibody was added and plates were incubated for 30 min at
91 37°C followed by three washes. TMB was added and absorbance read at 450 nm within
92 10 min of halting the reaction.

93 **Interpretation of ELISA results.**

94 EDI ELISA: Positive, negative and borderline results were calculated based on the
95 average optical density (OD) value for the negative control assayed in triplicate for the
96 specific assay. The positive and negative cut-off values were calculated using the
97 formula: positive cut-off = $1.1 \times (xNC + 0.18)$ and negative cut-off = $0.9 \times (xNC + 0.18)$,
98 where xNC is the average OD₄₅₀ of triplicate negative control OD₄₅₀ values. Samples
99 that had OD values between positive and negative cut-off values were reported as
100 borderline.

101 Euroimmun ELISA: The ratio of the sample OD₄₅₀ values to the calibrator OD₄₅₀ values
102 was calculated for all samples and controls. Samples with a ratio of less than 0.8 were
103 reported as negative, samples with a ratio of greater than 1.1 were reported as positive,
104 and ratios between 0.8 and 1.1 were reported as borderline.

105 **Focus Reduction Neutralization Assay (FRNT).** Vero E6 cells (ATCC, Manassas, VA)
106 were seeded in 96-well plates. Serum samples were heat inactivated and serially diluted
107 (2-fold, starting at 1:10) in DMEM (ThermoFisher, Pittsburgh, PA, USA) plus 1% FBS

108 (manufacturer, city, state) in 96-well plates. Approximately 100 focus-forming units
109 (FFU) of SARS-CoV-2 USA-WA1/2020 (8)(deposited by the Centers for Disease
110 Control and Prevention and obtained through BEI Resources, NIAID, NIH) was added to
111 each well and the serum plus virus mixture was incubated for 1 h at 37°C. At the end of
112 1 h, medium was removed from cells and the serum sample plus virus mixture was
113 added for 1 h at 37°C. After 1 h, samples were removed and cells overlaid with 1%
114 methylcellulose (MilliporeSigma, St. Louis, MO) in MEM (ThermoFisher, Pittsburgh, PA,
115 USA)/2% FBS and incubated 30 h at 37°C. Cells were fixed with 4% paraformaldehyde
116 (Acros Organics, Pittsburgh, PA, USA) and probed with 1 µg/mL of an anti-SARS-CoV
117 spike monoclonal antibody (CR3022, Absolute Antibody, Boston, MA, USA) in Perm
118 Wash (1X PBS/0.1% saponin/0.1% bovine serum albumin [BSA]) for 2 h at RT. After
119 washing, cells were incubated with horseradish peroxidase (HRP)-conjugated goat anti-
120 human IgG (Southern Biotech, Birmingham, AL, USA, 1:1,000) for 1.5 h at RT. After
121 washing, SARS-CoV-2-positive foci were visualized with TrueBlue substrate
122 (ThermoFisher, Pittsburgh, PA, USA) and counted using a CTL Biospot analyzer and
123 Biospot software (Cellular Technology Ltd, Shaker Heights, OH, USA). The FRNT₅₀ titer
124 was calculated relative to a virus only control (no serum) set at 100%, using GraphPad
125 Prism 8 (La Jolla, CA, USA) default nonlinear curve fit constrained between 0 and
126 100%.

127 **Data analysis:** Data were analyzed using GraphPad Prism Version 8 (San Diego, CA)
128 and Microsoft Excel 2016 (Microsoft, Redmond, WA). For OD₄₅₀ values and S1-RBD
129 ratios, the mean and 95% confidence intervals were calculated using GraphPad Prism's
130 statistical analysis package. Significant differences between groups were calculated

131 using Welch's test for unequal variances. The difference between groups was
132 considered statistically significant when $p < 0.05$.

133

134 **Results**

135 **Characterization of donor serum samples.** Eighty-seven samples from thirty-six CCP
136 donors from the CHCO Blood Donor Center were included in this study. All plasma
137 donors made an initial donation 12-42 days following a positive SARS-CoV-2 PCR
138 result, and again at the intervals shown in Table 1. Of the thirty-six donors, twenty-four
139 donated plasma twice, nine donors, three times, and three donors, four times. The
140 intervals between sequential plasma donations ranged from 7 to 24 days.

141 **Comparison of N and S1-RBD antibody detection with virus neutralizing activity.**

142 To determine if qualitative IgG antibody detection by ELISA, whether against the N or
143 the S1-RBD antigen, correlated with virus neutralizing activity, samples were analyzed
144 for the presence of anti-N IgG antibodies using the Epitope Diagnostics ELISA, anti-S1-
145 RBD IgG antibodies using the Euroimmun ELISA, and neutralizing activity using a live
146 virus focus reduction assay. Samples with a neutralizing antibody titer of 1:80 or greater
147 had a positive or borderline-positive result for both N and S1-RBD IgG antibodies, with
148 the exception of sample 018-D (neutralizing titer of 1:85), which was positive for N and
149 negative for S1-RBD, and sample 023-D (neutralizing titer of 1:91) which was negative
150 for N and was not analyzed for S1-RBD antibodies (Table 2). More variability between
151 anti-N and anti-S1-RBD IgG ELISA results was noted for samples with lower
152 neutralizing antibody titers, particularly for the five samples that had neutralizing titers of
153 $< 1:40$. These samples were negative for anti-N IgG antibodies; four of the five samples

154 were either negative or borderline-positive for anti-S1-RBD IgG, and one was positive.
155 Of note, donor 019-D (samples 1 and 2) remained persistently negative for anti-N IgG,
156 had a marginal increase in anti-S1-RBD IgG on the second CCP donation, and had very
157 low FRNT50 titers.

158 To determine whether OD_{450} values for anti-N IgG antibodies or the ratio for anti-S1-
159 RBD IgG antibodies was predictive of neutralizing antibody titers, we compared the
160 numerical values associated with a positive or negative ELISA result with the
161 corresponding neutralizing antibody titer (Figure 1). Samples with a neutralizing
162 antibody titer of <1:80 had the lowest OD_{450} values for N or ratios for S1-RBD. An
163 increase in OD_{450} value or an increase in S1-RBD ratio independently correlated with a
164 significant increase in neutralizing antibody titers (Figures 1A and 1B). However, given
165 the wide variability among OD_{450} values and ratios within each group, we performed a 3-
166 way comparison of the data to examine whether there was a relationship between the
167 level of positivity for anti-N IgG, anti-S1-RBD IgG, and neutralizing antibody titers
168 (Figure 2). Two of the samples with the highest neutralizing antibody titers, both from
169 donor 001-D, had the highest ratios for anti-S1-RBD IgG, and although they were
170 strongly positive for anti-N IgG antibodies, they did not have the highest OD_{450} values in
171 this sample set. In general, samples with both low anti-N IgG and anti-S1-RBD IgG
172 numerical values correlated well with low or minimal neutralizing activity. Five samples
173 with neutralizing titers between 1:1,000-1:1,500 had varying levels of positivity for anti-N
174 IgG and anti-S1-RBD IgG, and three samples with the highest OD_{450} values for anti-N
175 IgG antibodies had neutralizing antibody titers in the range of 1:200 (Figure 2).

176 Given that these ELISAs were performed using a single dilution of serum, it is possible
177 that the numerical values obtained are not in the linear range, and, therefore, these
178 results affect correlations with neutralizing antibody titers as the FRNT50 is a
179 quantitative assay. Nevertheless, an anti-N IgG OD₄₅₀ of 0.4 and above correlated well
180 with a neutralizing titer of $\geq 1:80$ in 90% of the samples, and an anti-S1-RBD IgG ratio of
181 3.0 and above correlated with $\geq 1:80$ neutralizing antibody titer in 82% of the samples
182 (Table 3 and Figure 2). Only three samples with a neutralizing titer of $\geq 1:80$ had an anti-
183 N IgG OD₄₅₀ <0.4 and an anti-S1-RBD IgG ratio <3.0. In general, when the anti-N IgG
184 OD₄₅₀ value was <0.4, the anti-S1-RBD IgG ratio was >3.0 and vice versa, indicating
185 that a combination of the two assays accurately captured 96% of CCP samples with
186 $\geq 1:80$ neutralizing activity. Additionally, specificity of the anti-S1-RBD IgG ratio was
187 greater for neutralizing titers, as 93% of samples with <1:80 neutralizing activity had
188 <3.0 anti-S1-RBD IgG ratios, whereas greater than a quarter (27%) of these samples
189 had anti-N IgG OD₄₅₀ values of >0.4 (Table 3).

190 As recommended by the FDA, CCP units eligible for therapeutic use for COVID-19
191 patients are expected to have a neutralizing antibody titer of at least 1:80 and preferably
192 $\geq 1:160$. Of the 87 samples tested in this study, 72/87 (82.7%) had a neutralizing titer of
193 $\geq 1:80$ and 53/87 (60.9%) had a titer of $\geq 1:160$ (Table 2 and Figure 3A).

194 Neutralizing antibody titers were, in general, between 1/80 and 1/500 for the majority of
195 samples tested (52%). Approximately 20% had titers greater than 1/500 and very few (7
196 of the 87 tested) had neutralizing antibody titers of >1:1000 (Figure 3A).

197 **Sustainability of the antibody response.** Because analysis of N and S1-RBD IgG
198 antibodies by single dilution ELISA is qualitative at best, we chose to analyze the

199 robustness and sustainability of the SARS-CoV-2 antibody response by analyzing
200 neutralizing antibody titers in sequential samples from the 36 donors included in this
201 study. Neutralizing antibody titers at the time of initial donation varied significantly from
202 <1:10 to almost 1:2000 (Figure 3B). Aggregate analysis of plasma samples at the time
203 of initial donation, or between seven and 24 days following initial collection, showed an
204 increase from baseline at the time of the second donation and an average greater
205 increase at the third donation; however, these increases were not statistically significant
206 (Figure 3B). Although the mean neutralizing antibody titer appeared to decrease at the
207 time of the fourth donation, there were too few samples to ensure statistical significance
208 at this time point. Given that the considerable variability of SARS-CoV-2 neutralizing
209 antibody titers between donors may also be confounded by the interval between
210 donations and the initial neutralizing antibody titer, we analyzed longevity of neutralizing
211 antibody responses for individual donors. The majority of individuals donated two
212 plasma units 7-24 days apart (Figures 4A and B). Only one donor (001-D) had a
213 baseline titer of >1/1500, which rose to >1/2000 at the time of the second donation
214 (Figure 4A). Of the 24 donors who donated plasma twice, neutralizing antibody titers
215 decreased in seven (Figure 4B), increased slightly (< 2-fold) or remained relatively
216 unchanged in 12, and increased between 2-6-fold in five donors (Figure 4C). Of the 12
217 donors with three or four sequential donations (Figures 5A and B), antibody titers
218 increased or remained relatively unchanged from the initial plasma donation for seven
219 donors and declined in the remaining five. Donor 015-D had the greatest decline in
220 titers, from a 5-fold increase at the second and third donation to a 2-fold increase over
221 baseline at the fourth donation. In general, for the seven donors who had an increase in

222 neutralizing antibody titer over time, the fold increase in titer was moderate, with the
223 exception of donor 013-D who had a 12-fold increase (from 1/90 to 1/1122). Overall,
224 24/36 (67%) and 12/36 (33%) donors had either sustained or declined neutralizing
225 antibody titers, respectively, during the observation period compared with their
226 individual baseline titers.

227

228 **Discussion**

229 Passive transfer of convalescent plasma has been utilized to combat infection with a
230 variety of pathogens including the 1918 H1N1 influenza virus (9), the 2009 H1N1
231 influenza virus (10), and the SARS-CoV-2 -related coronaviruses, MERS and SARS-
232 CoV (11, 12). Transfer of CCP for the treatment of COVID-19 received FDA approval
233 for use as an investigational therapeutic in March of 2020 (13). Data regarding its
234 efficacy continues to accumulate, and some initial successes have been reported (14-
235 19). We have collected 548 units at CHCO to date. As this program ramps up to meet
236 the growing need for CCP to combat the COVID-19 crisis, there is a need to screen
237 these units as quickly and as accurately as possible for titer and quality of SARS-CoV-2
238 antibodies.

239

240 A large variety of serological assays for analysis of SARS-CoV-2 antibodies targeting
241 the immunodominant nucleocapsid and spike antigens are now available with varying
242 levels of regulatory approval and validation. However, these antigen binding assays do
243 not provide information on neutralizing capacity of SARS-CoV-2 antibodies. Given that
244 the FDA's recommendation for CCP is a neutralizing antibody titer of at least 1:80 and

245 preferably 1:160, and that neutralizing antibody assays cannot be easily implemented in
246 most clinical laboratories, it is important to evaluate correlations between antigen
247 binding assays and neutralizing antibody titers in order to triage CCP units and enable
248 selection of units that are likely to have recommended neutralizing titers. An analysis of
249 159 serum samples from healthy, COVID-19 recovered individuals revealed that while
250 samples with high IgG ELISA titers to the RBD antigen generally correlated with
251 neutralizing activity as determined by a PRNT assay, only half of the individuals tested
252 had >1:160 PRNT50 titer (20). Our comparison of anti-N IgG antibodies, measured by
253 the EDI assay, and anti-S1-RBD IgG antibodies, measured by the Euroimmun assay,
254 indicates that an increase in the relative level of positivity of either antibody correlated
255 with an increase in neutralization titer, however, these correlations were mutually
256 exclusive. The level of positivity for S1-RBD antibodies had a higher correlation with
257 neutralizing activity, as would be expected, since viral entry is mediated by the spike
258 protein and anti-N antibodies are non-neutralizing (21, 22). SARS-CoV-2 N antigen is
259 highly antigenic (23), and while some of the donor samples were highly positive for anti-
260 N IgG antibodies, they did not have corresponding high neutralizing antibody titers. The
261 drawback of these qualitative assays is that they are based on a single dilution and,
262 therefore, may not measure antibodies in the linear range. Despite this, our data
263 indicate that samples with an anti-N IgG OD₄₅₀ of 0.4 by the EDI assay, or a ratio of 3.0
264 for measurement of anti-S1-RBD IgG antibodies by the Euroimmun assay accurately
265 captured the majority of samples with neutralizing titers of $\geq 1:80$. Furthermore, our data
266 suggest that analysis of antibodies to a single SARS-CoV-2 antigen may not be
267 sufficient to be predictive of neutralizing capability.

268

269 There is limited information about the peak and decline of SARS-CoV-2 antibodies
270 following generation of an antibody response. In a scientific brief released by the World
271 Health Organization (WHO), it was stated that there is "currently no evidence that
272 people who have recovered from COVID-19 and have antibodies are protected from a
273 second infection" and further stated that laboratory tests that detect antibodies to SARS-
274 CoV-2, including rapid immunodiagnostic tests, need further validation to determine
275 accuracy and reliability (24). The presence of antibodies and how long they last in an
276 individual may be a critical factor as the economy continues to reopen and people who
277 are considered immune may be deemed safe to return to work or other activities
278 (WHO). In this context, antigen binding assays that have been implemented for rapid
279 screening do not provide information regarding the functionality of these antibodies.
280 Such information is typically generated from biological assays such as the FRNT50,
281 described in our study, that examines the ability of CCP to neutralize viral replication in
282 permissive cell lines. We found that close to 80% of the population of donor samples we
283 tested had a neutralizing antibody titer of $\geq 1:80$, and 60% $\geq 1:160$, both of which meet
284 the FDA's criteria for eligible CCP units.

285 The longevity of the antibody response is a critical part of potential protection against re-
286 infection, although such information continues to be gathered. Analysis of the longevity
287 of the antibody response to SARS1 indicates that anti-SARS1 antibodies were
288 detectable two to three years following infection in one study (25), and, in a second
289 study, detectable for close to a year following infection but declined over the course of
290 this observation period (26). Short term studies on the durability of the SARS-CoV-2

291 antibody response have provided variable results, and in particular seem to correlate
292 with the severity of illness (27) while other reports suggest antibody titers may quickly
293 wane, and concerns for reinfection, particularly with mild or no symptoms, are not
294 unwarranted (28). For example, one reported case found that a SARS-CoV-2 confirmed
295 infected patient's IgG antibodies became undetectable by day 80 (29). The significance
296 of a waning antibody level may be particularly impactful when considering repeat
297 collections from such donors, because of the effect that a waning antibody response
298 may have on the amount and quality of the SARS-CoV-2 antibodies that are transfused
299 as part of CCP therapy. As reported in the large study of 35,322 patients who received
300 convalescent plasma as part of the Mayo Expanded Access Protocol, a higher antibody
301 titer was correlated with reduced mortality (19). As a result, the recently issued
302 Emergency Use Authorization from the FDA has established a cut-off value for a high
303 antibody titer on the FDA approved Ortho VITROS SARS-CoV-2 IgG platform (30).
304 Although the Signal-to-Cutoff ratio was provided for these reports, a correlation to
305 neutralizing antibody titer thresholds in the prior FDA requirement of >1:80 titer with
306 preference for $\geq 1:160$ titer was not provided. This incites the question of the adequacy
307 of the minimum threshold for CCP treatment and may impact future collections if the
308 threshold is increased for therapeutic efficacy.

309 Our data suggests that a majority of donors (67%) had a neutralizing antibody
310 response that was either sustained or increased over the short period of approximately
311 three weeks to two months following a positive SARS-CoV-2 PCR result, and a smaller
312 percentage (33%) showed a decrease in neutralizing antibody titer over sequential
313 donations. Notably, repeat donations did not appear to affect antibody titer for the

314 majority (67%) of donors. A drawback of our dataset is that for the majority of donors,
315 we were able to test only two time points (7-24 days apart) following a positive SARS-
316 CoV-2 PCR test, making it challenging to comment on longer term sustainability of the
317 response. The longevity of the SARS-CoV-2 antibody response and the level of
318 protection it will provide for reinfection is yet to be determined.

319

320 **Authorship Contributions.** KA and MD developed the CCP donor program and
321 contributed to writing and critical review of the manuscript. TEM and MKM developed
322 the FRNT50 assays and contributed to writing and data analysis, MKM performed the
323 FRNT50 assays and FRNT50 data analysis, LH, PAM and GA performed the EDI and
324 Euroimmun ELISAs, analyzed ELISA data and contributed to writing, VK conceptualized
325 the manuscript, contributed to writing, data analysis and critical review of the
326 manuscript.

327

328 **Disclosure of Conflicts of Interest.** The authors report no conflicts of interest

329

330 **Funding.** This study was funded by the Department of Pediatrics, the Department of
331 Immunology and Microbiology, University of Colorado School of Medicine and
332 Children's Hospital, Colorado.

333

334

335

336

337 **Figure legends:**

338 Figure 1. Comparison of reciprocal FRNT50 titer with either anti-nucleocapsid IgG (A) or
339 anti-S1-RBD IgG (B). Data are the mean and 95% confidence intervals for each group
340 of FRNT50 titers. N=86 for FRNT50 vs anti-N antibodies and N=84 for FRNT50 vs anti-
341 S1-RBD antibodies. *= $p < 0.05$, **= $p < 0.001$, and ***= $p < 0.0001$ using Welch's test for
342 unequal variance.

343
344 Figure 2: Comparison of anti-nucleocapsid IgG (OD_{450} , x-axis), anti-S1-RBD IgG (ratio,
345 y-axis), and FRNT50 reciprocal titer (relative size of bubble, larger bubbles correspond
346 to higher titers). Eighty-five samples were compared for correlation among anti-N, anti-
347 S1-RBD and neutralizing antibody titers. Two samples with the highest FRNT50 titers
348 (red circles), also had the highest S1-RBD ratios and moderately high levels of anti-N1.
349 Three samples with the highest anti-N OD_{450} values had FRNT50 values of
350 approximately 1:200 (purple circles), while five samples (green circles) had FRNT50
351 values of approximately 1:1000 but had varying levels of anti-N and anti-S1-RBD
352 antibodies. Dashed lines indicate cut-off values for OD_{450} and ratios above which 90%
353 of FRNT50 values were 80 or greater.

354
355 Figure 3. FRNT50 titers in CCP donors (A) and FRNT50 titers grouped by sequential
356 CCP donations (B). Eighty-seven samples were analyzed for FRNT50 titers. Data are
357 grouped by FRNT50 titer and the number of samples in each group is indicated (A).
358 FRNT50 titers correlated with CCP collection time point. The difference between groups

359 was considered significant ($p < 0.05$) using Welch's test for unequal variances. ns=not
360 significant.

361

362 Figure 4. Change in FRNT50 titers over two sequential donations. FRNT50 titer
363 increased or remained relatively unchanged (A, n=17 donors). FRNT50 titers decreased
364 from the initial to the second donation (B, n=7). Fold increase from initial donation for
365 donors with two sequential donations (C, n=24).

366

367 Figure 5. Change in FRNT50 titer over three or four sequential donations. (A) FRNT
368 titers over the course of three or four donations for individual donors. (B) Fold-increase
369 from initial donation. n=12.

370

371 **References**

372 1. [https://www.fda.gov/vaccines-blood-biologics/investigational-new-drug-ind-or-](https://www.fda.gov/vaccines-blood-biologics/investigational-new-drug-ind-or-373 device-exemption-ide-process-cber/recommendations-investigational-covid-19-374 convalescent-plasma)
375 [device-exemption-ide-process-cber/recommendations-investigational-covid-19-](https://www.fda.gov/vaccines-blood-biologics/investigational-new-drug-ind-or-373 device-exemption-ide-process-cber/recommendations-investigational-covid-19-374 convalescent-plasma)
376 [convalescent-plasma](https://www.fda.gov/vaccines-blood-biologics/investigational-new-drug-ind-or-373 device-exemption-ide-process-cber/recommendations-investigational-covid-19-374 convalescent-plasma).

375 2. <https://www.fda.gov/media/136798/download>.

376 3. <https://www.accessdata.fda.gov/scripts/cdrh/cfdocs/cfcfr/CFRSearch.cfm?fr=630.3>.

377 4. Ciszewski TS, Ralston S, Acteson D, Wasi S, Strong SJ. Protein levels and
378 plasmapheresis intensity. *Transfus Med*. 1993;3(1):59-65.

379 5. Kohmer N, Westhaus S, Ruhl C, Ciesek S, Rabenau HF. Clinical performance of
380 different SARS-CoV-2 IgG antibody tests. *J Med Virol*. 2020.

- 381 6. Kruttgen A, Cornelissen CG, Dreher M, Hornef M, Imohl M, Kleines M.
382 Comparison of four new commercial serologic assays for determination of SARS-CoV-2
383 IgG. J Clin Virol. 2020;128:104394.
- 384 7. Walls AC, Park YJ, Tortorici MA, Wall A, McGuire AT, Veessler D. Structure,
385 Function, and Antigenicity of the SARS-CoV-2 Spike Glycoprotein. Cell.
386 2020;181(2):281-92 e6.
- 387 8. Harcourt J, Tamin A, Lu X, Kamili S, Sakthivel SK, Murray J, et al. Severe Acute
388 Respiratory Syndrome Coronavirus 2 from Patient with Coronavirus Disease, United
389 States. Emerg Infect Dis. 2020;26(6):1266-73.
- 390 9. Luke TC, Kilbane EM, Jackson JL, Hoffman SL. Meta-analysis: convalescent
391 blood products for Spanish influenza pneumonia: a future H5N1 treatment? Ann Intern
392 Med. 2006;145(8):599-609.
- 393 10. Hung IF, To KK, Lee CK, Lee KL, Chan K, Yan WW, et al. Convalescent plasma
394 treatment reduced mortality in patients with severe pandemic influenza A (H1N1) 2009
395 virus infection. Clin Infect Dis. 2011;52(4):447-56.
- 396 11. Soo YO, Cheng Y, Wong R, Hui DS, Lee CK, Tsang KK, et al. Retrospective
397 comparison of convalescent plasma with continuing high-dose methylprednisolone
398 treatment in SARS patients. Clin Microbiol Infect. 2004;10(7):676-8.
- 399 12. Ko JH, Seok H, Cho SY, Ha YE, Baek JY, Kim SH, et al. Challenges of
400 convalescent plasma infusion therapy in Middle East respiratory coronavirus infection: a
401 single centre experience. Antivir Ther. 2018;23(7):617-22.
- 402 13. [https://www.fda.gov/news-events/press-announcements/coronavirus-covid-19-](https://www.fda.gov/news-events/press-announcements/coronavirus-covid-19-update-daily-roundup-march-24-2020)
403 [update-daily-roundup-march-24-2020.](https://www.fda.gov/news-events/press-announcements/coronavirus-covid-19-update-daily-roundup-march-24-2020)

- 404 14. Duan K, Liu B, Li C, Zhang H, Yu T, Qu J, et al. Effectiveness of convalescent
405 plasma therapy in severe COVID-19 patients. Proc Natl Acad Sci U S A.
406 2020;117(17):9490-6.
- 407 15. Salazar E, Perez KK, Ashraf M, Chen J, Castillo B, Christensen PA, et al.
408 Treatment of Coronavirus Disease 2019 (COVID-19) Patients with Convalescent
409 Plasma. Am J Pathol. 2020;190(8):1680-90.
- 410 16. Shen C, Wang Z, Zhao F, Yang Y, Li J, Yuan J, et al. Treatment of 5 Critically Ill
411 Patients With COVID-19 With Convalescent Plasma. JAMA. 2020.
- 412 17. Ye M, Fu D, Ren Y, Wang F, Wang D, Zhang F, et al. Treatment with
413 convalescent plasma for COVID-19 patients in Wuhan, China. J Med Virol. 2020.
- 414 18. Zeng QL, Yu ZJ, Gou JJ, Li GM, Ma SH, Zhang GF, et al. Effect of Convalescent
415 Plasma Therapy on Viral Shedding and Survival in Patients With Coronavirus Disease
416 2019. J Infect Dis. 2020;222(1):38-43.
- 417 19. Joyner MJ, Senefeld JW, Klassen SA, Mills JR, Johnson PW, Theel ES, et al.
418 Effect of Convalescent Plasma on Mortality among Hospitalized Patients with COVID-
419 19: Initial Three-Month Experience. medRxiv. 2020.
- 420 20. Lee WT, Girardin RC, Dupuis AP, Kulas KE, Payne AF, Wong SJ, et al.
421 Neutralizing Antibody Responses in COVID-19 Convalescent Sera. medRxiv.
422 2020:2020.07.10.20150557.
- 423 21. Shang J, Ye G, Shi K, Wan Y, Luo C, Aihara H, et al. Structural basis of receptor
424 recognition by SARS-CoV-2. Nature. 2020;581(7807):221-4.

- 425 22. Buchholz UJ, Bukreyev A, Yang L, Lamirande EW, Murphy BR, Subbarao K, et
426 al. Contributions of the structural proteins of severe acute respiratory syndrome
427 coronavirus to protective immunity. *Proc Natl Acad Sci U S A*. 2004;101(26):9804-9.
- 428 23. Burbelo PD, Riedo FX, Morishima C, Rawlings S, Smith D, Das S, et al.
429 Sensitivity in Detection of Antibodies to Nucleocapsid and Spike Proteins of Severe
430 Acute Respiratory Syndrome Coronavirus 2 in Patients With Coronavirus Disease 2019.
431 *J Infect Dis*. 2020;222(2):206-13.
- 432 24. [https://www.who.int/news-room/commentaries/detail/immunity-passports-in-the-](https://www.who.int/news-room/commentaries/detail/immunity-passports-in-the-context-of-covid-19)
433 [context-of-covid-19](https://www.who.int/news-room/commentaries/detail/immunity-passports-in-the-context-of-covid-19).
- 434 25. Wu LP, Wang NC, Chang YH, Tian XY, Na DY, Zhang LY, et al. Duration of
435 antibody responses after severe acute respiratory syndrome. *Emerg Infect Dis*.
436 2007;13(10):1562-4.
- 437 26. Woo PC, Lau SK, Wong BH, Chan KH, Chu CM, Tsoi HW, et al. Longitudinal
438 profile of immunoglobulin G (IgG), IgM, and IgA antibodies against the severe acute
439 respiratory syndrome (SARS) coronavirus nucleocapsid protein in patients with
440 pneumonia due to the SARS coronavirus. *Clin Diagn Lab Immunol*. 2004;11(4):665-8.
- 441 27. Klein S, Pekosz A, Park HS, Ursin R, Shapiro J, Benner S, et al. Sex, age, and
442 hospitalization drive antibody responses in a COVID-19 convalescent plasma donor
443 population. *medRxiv*. 2020.
- 444 28. Ibarondo FJ, Fulcher JA, Goodman-Meza D, Elliott J, Hofmann C, Hausner MA,
445 et al. Rapid Decay of Anti-SARS-CoV-2 Antibodies in Persons with Mild Covid-19. *N*
446 *Engl J Med*. 2020.

- 447 29. Liu A, Wang W, Zhao X, Zhou X, Yang D, Lu M, et al. Disappearance of
448 antibodies to SARS-CoV-2 in a -COVID-19 patient after recovery. Clin Microbiol Infect.
449 2020.
- 450 30. <https://www.fda.gov/media/141477/download>.

451
452
453
454
455
456
457
458
459
460
461
462
463
464
465
466
467
468
469

470 **Table 1. Interval (days) between CCP collection for individual donors.**

Donor ID	Interval between positive PCR result and initial donation	Interval between initial and second donation	Interval between second and third donation	Interval between third and fourth donation
001-D	33	7		
002-D	36	7		
003-D	28	8	17	
005-D	29	7	9	
006-D	29	7	9	
007-D	42	8	6	8
008-D	20	19		
009-D	18	12	8	7
010-D	33	18		
011-D	30	7		
012-D	19	13	7	
013-D	31	8	14	
014-D	25	13	11	
015-D	22	11	7	7
016-D	36	8	9	
018-D	27	15		
019-D	26	8		
020-D	22	11	7	
021-D	32	8		
022-D	24	11		
023-D	31	8		
024-D	33	12		
025-D	29	12		
026-D	27	8		
027-D	26	20		
028-D	12	14		
029-D	36	5		
030-D	23	18		
031-D	28	11		
032-D	24	14		
033-D	22	24		
034-D	29	12		
035-D	36	9		
036-D	24	10		
037-D	26	9	13	

471

472

Table 2. Correlation of FRNT50 reciprocal titers and anti-N IgG or anti-S1-RBD IgG qualitative results.

	FRNT50	Anti-N	Anti-S1-RBD		FRNT50	Anti-N	Anti-S1-RBD		FRNT50	Anti-N	Anti-S1-RBD		FRNT50	Anti-N	Anti-S1-RBD
1	10.00	Neg	Neg	26	100.93	Pos	Pos	51	257.63	Pos	Pos	76	628.06	Pos	Pos
2	13.90	Neg	Borderline	27	103.75	pos	Pos	52	260.02	Pos	Pos	77	717.79	Pos	Pos
3	22.86	Neg	Neg	28	115.08	Pos	Pos	53	263.63	Pos	Pos	78	722.77	Pos	Pos
4	34.28	Neg	ND	29	123.31	Pos	Pos	54	307.61	Pos	Pos	79	744.73	Pos	Pos
5	35.1	Neg	Pos	30	129.4	Pos	Pos	55	309.74	Pos	Pos	80	820.4	Pos	Pos
6	39.08	Neg	Borderline	31	129.4	Pos	Pos	56	314.8	Pos	Pos	81	1025.65	Pos	Pos
7	43.05	Neg	Borderline	32	132.4	Pos	Pos	57	317.69	Pos	Pos	82	1047.13	Pos	Pos
8	43.2	Neg	Pos	33	135.21	Pos	Pos	58	327.34	Pos	Pos	83	1122.02	Pos	Pos
9	44.16	Pos	Neg	34	149.97	Pos	Pos	59	338.06	Pos	Pos	84	1177.61	Pos	Pos
10	45.81	Pos	Pos	35	163.7	Pos	Pos	60	361.41	Pos	Pos	85	1273.50	Pos	Pos
11	48.75	Neg	Pos	36	164.44	Pos	Pos	61	363.08	Pos	Pos	86	1936.42	Pos	Pos
12	64.1	Pos	Pos	37	172.58	Borderline	Pos	62	372.39	Pos	Pos	87	2301.44	Pos	Pos
13	66.07	Pos	Borderline	38	179.06	Pos	Pos	63	375.84	Pos	Pos				
14	69.50	Pos	Pos	39	180.72	Pos	Pos	64	439.54	Pos	Pos				
15	69.50	Pos	Pos	40	198.15	Pos	Pos	65	451.86	Borderline	Pos				
16	81.66	Pos	Pos	41	200.45	Pos	Pos	66	453.94	Pos	Pos				
17	81.85	pos	Pos	42	204.2	Pos	Pos	67	476.43	Pos	Pos				
18	85.11	Pos	Neg	43	206.54	Pos	Pos	68	480.84	Pos	Pos				
19	85.31	Pos	Pos	44	217.27	Borderline	Pos	69	493.17	Pos	Pos				
20	85.5	Pos	Pos	45	225.42	Pos	Pos	70	500.03	Pos	Pos				
21	90.57	Pos	Pos	46	227.51	Pos	Pos	71	509.33	Pos	Pos				
22	90.99	Pos	Pos	47	232.81	Pos	Pos	72	537.03	Pos	Pos				
23	91.41	Neg	ND	48	244.34	pos	Pos	73	542.00	pos	Pos				
24	92.7	Pos	Pos	49	248.9	Pos	Pos	74	559.76	Pos	Pos				
25	94.62	Pos	Pos	50	254.10	Pos	Pos	75	574.12	Pos	Pos				

*ND = not done.

Table 3: Correlation of >1:80 or <1:80 neutralizing antibody titers with anti-N or anti-S1-RBD level of positivity.

Neutralizing titer $\geq 1:80$			
	Anti-S1-RBD IgG <3.0	Anti-S1-RBD IgG >3.0	Total anti-N IgG >0.4
Anti-N IgG <0.4	3 (4.2%)	4 (5.6%)	90.2%
Anti-N IgG > 0.4	10 (14.1%)	54 (76.1%)	
Total anti-S-RBD IgG > 3.0		81.7%	

Neutralizing titer <1:80			
	Anti-S1-RBD IgG <3.0	Anti-S1-RBD IgG >3.0	Total anti-N IgG >0.4
Anti-N IgG <0.4	10 (71.4%)	0 (0%)	28.4%
Anti-N IgG > 0.4	3 (21.4%)	1 (7%)	
Total anti-S-RBD IgG > 3.0		7%	

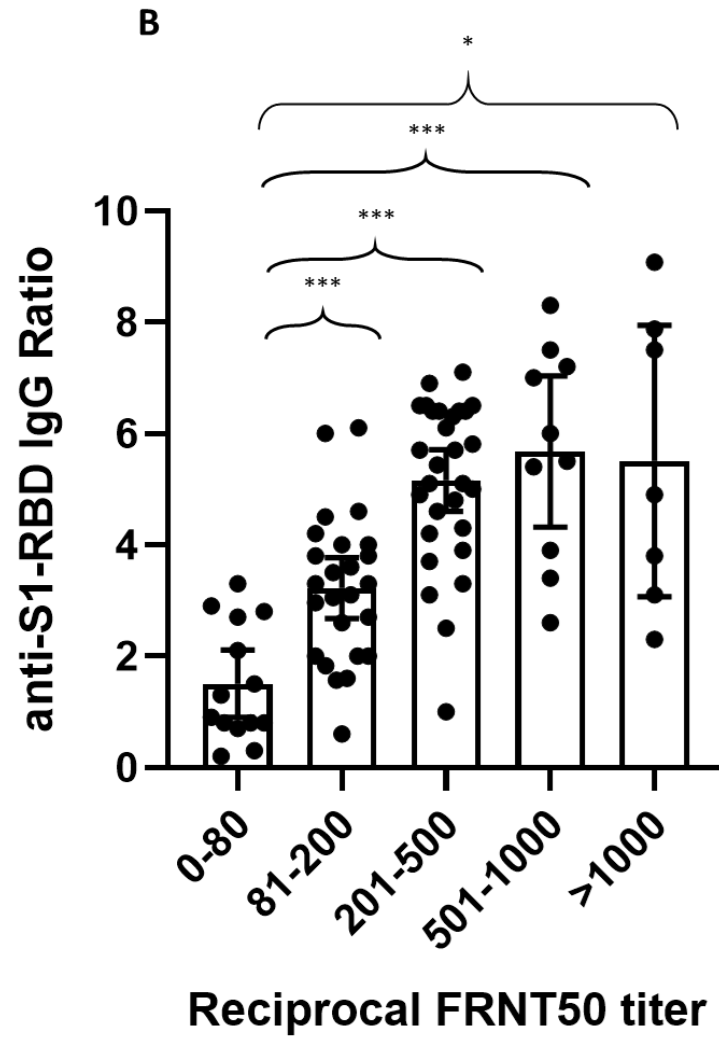
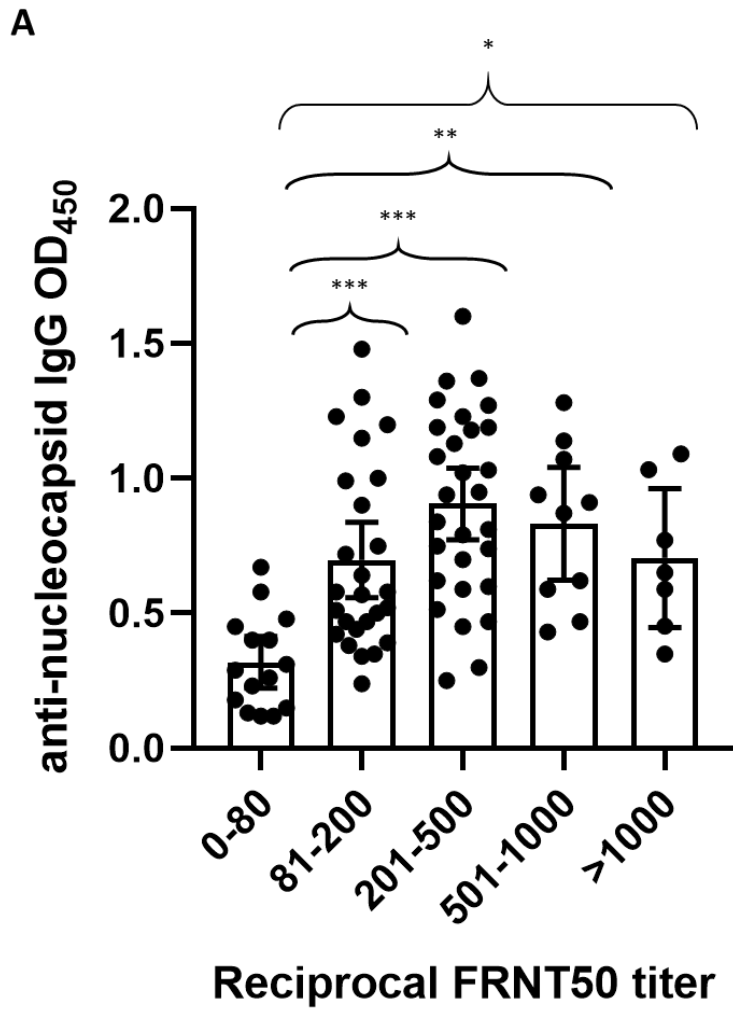


Figure 1

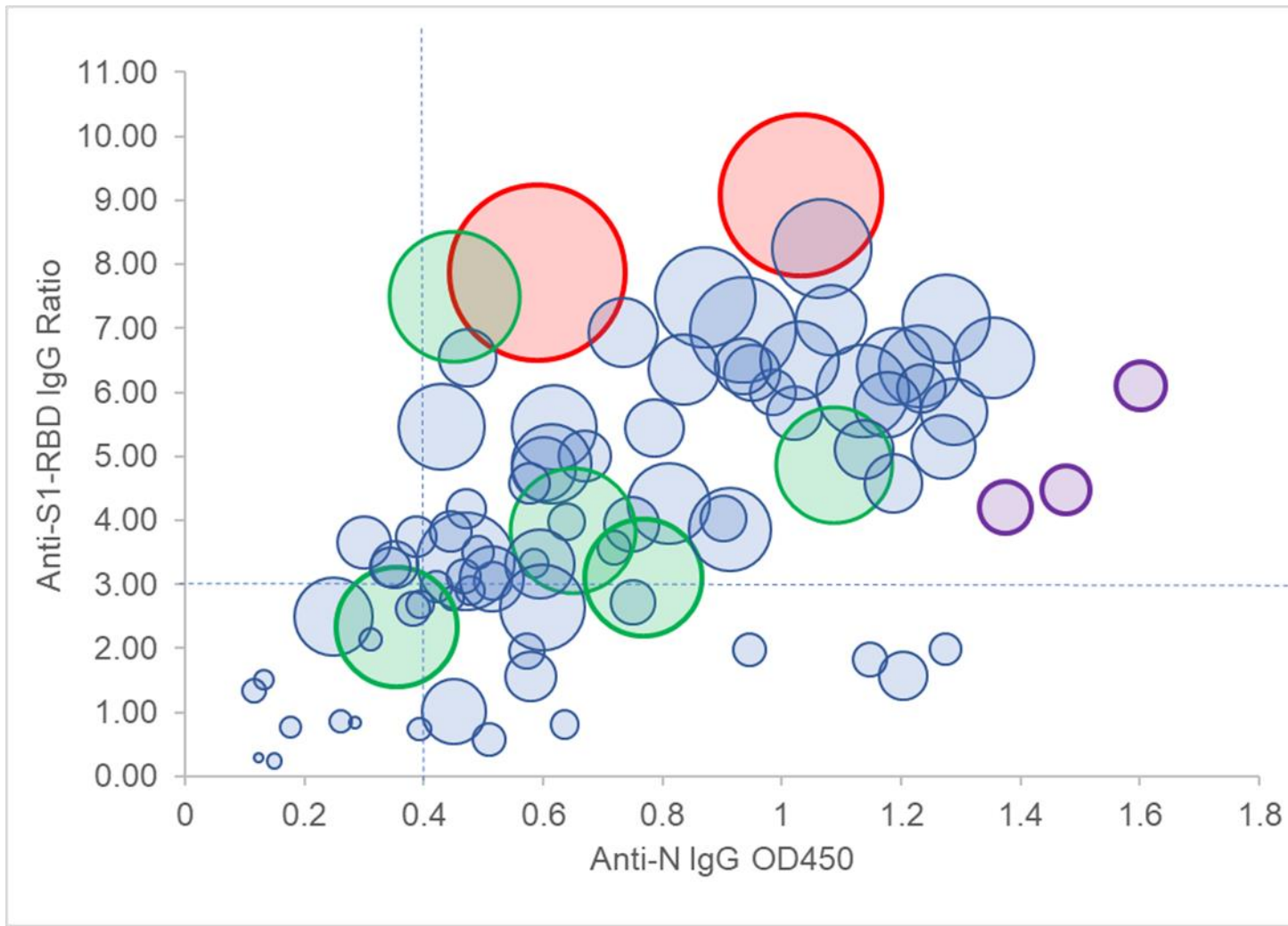
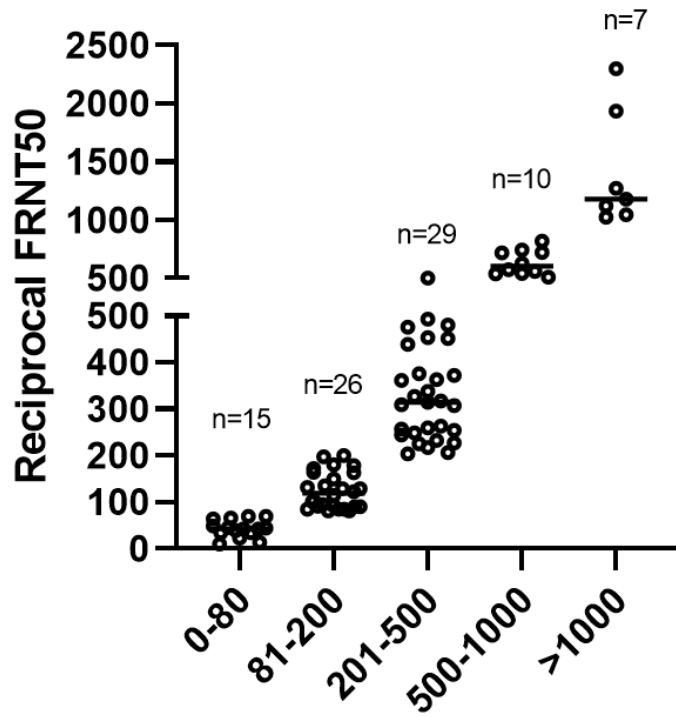


Figure 2

A



B

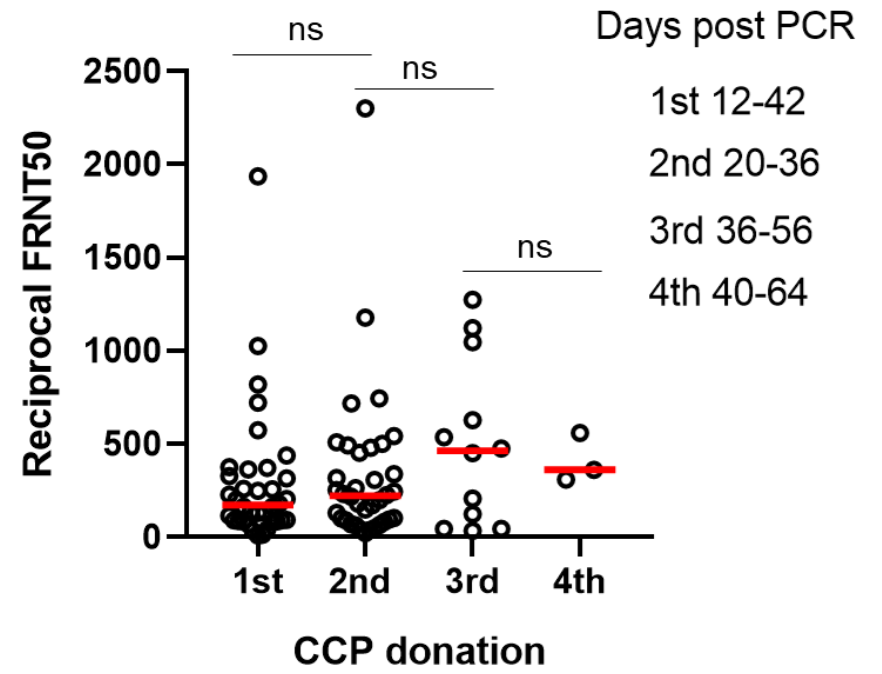


Figure 3

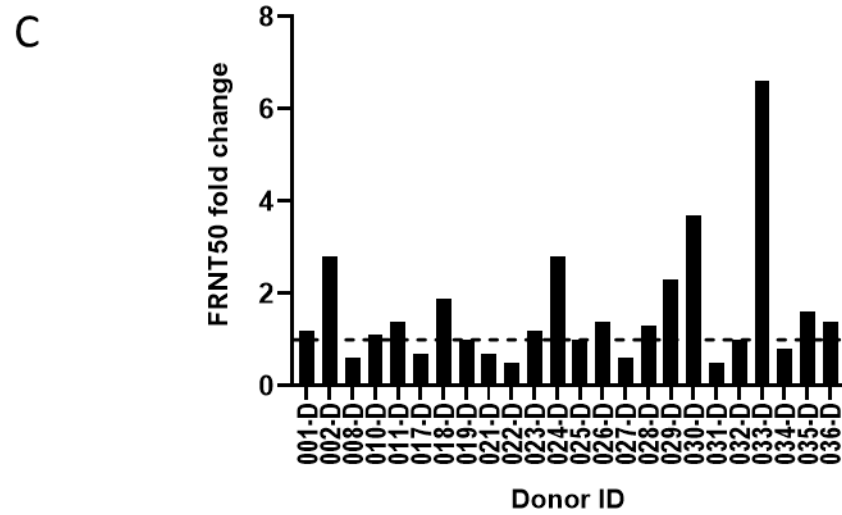
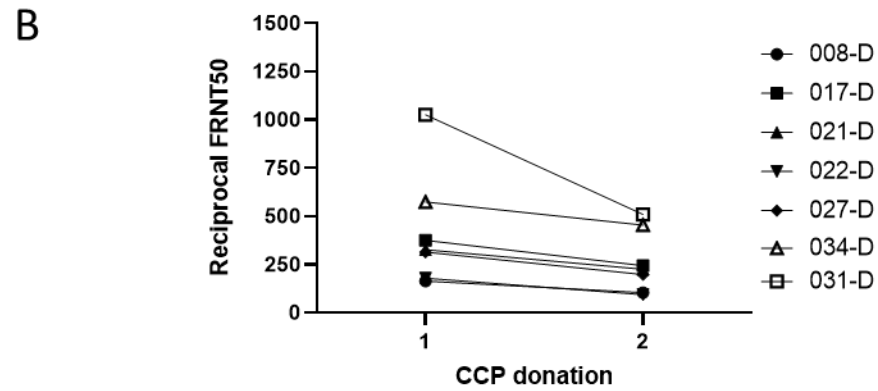
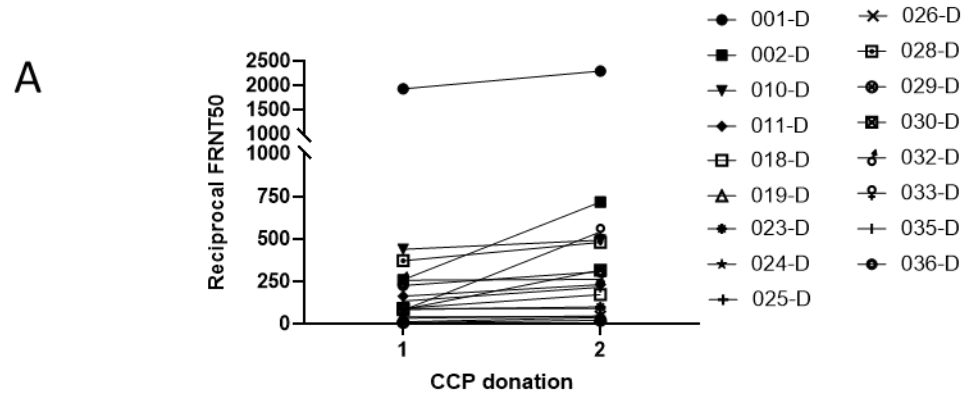


Figure 4

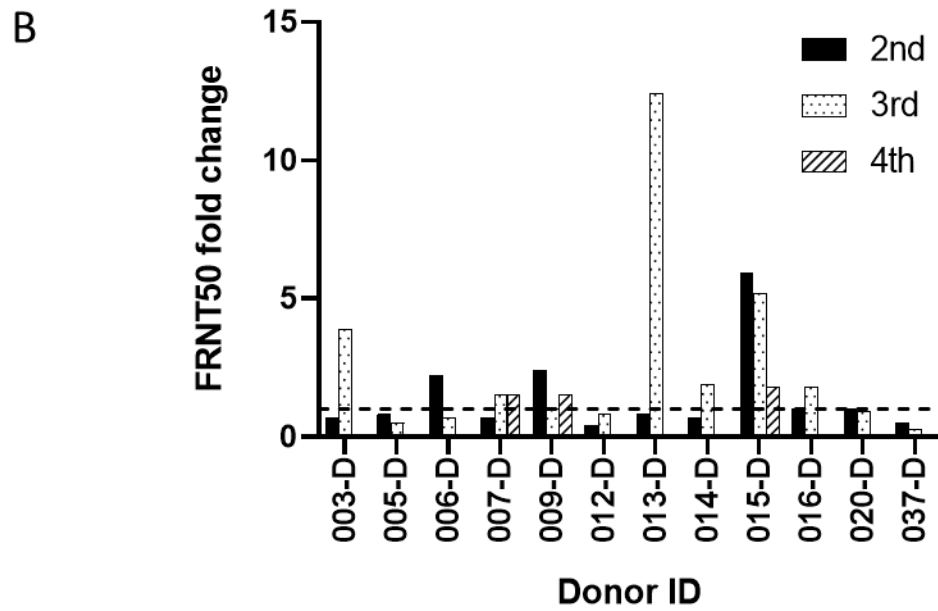
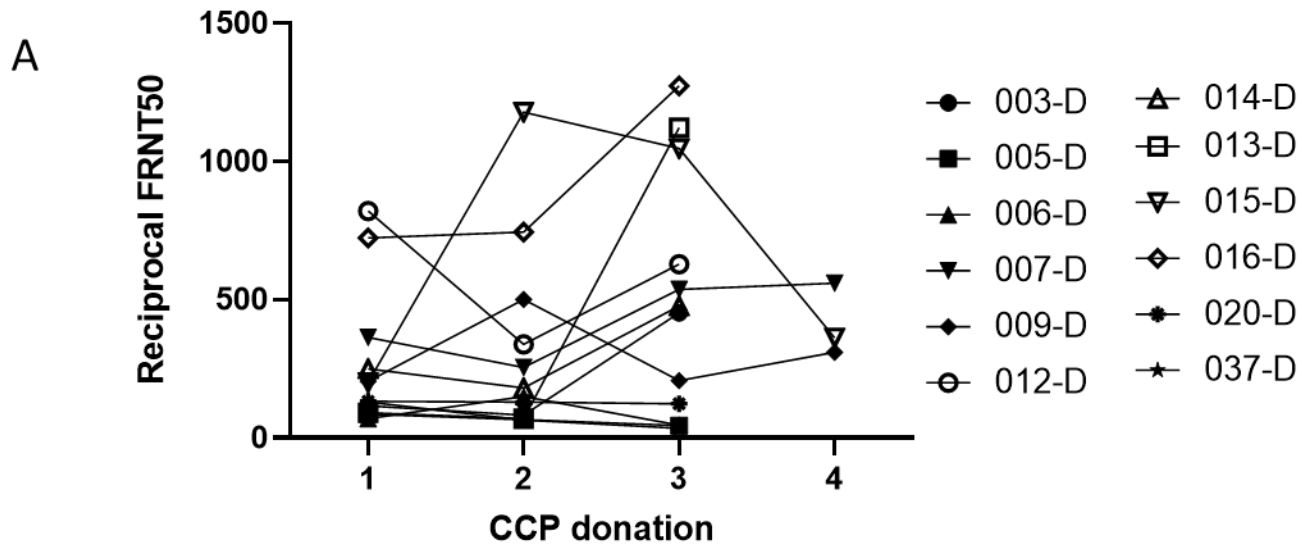


Figure 5