

1 Exploring the utility of social-ecological and entomological risk factors for dengue infection as
2 surveillance indicators in the dengue hyper-endemic city of Machala, Ecuador

3

4 Catherine A. Lippi^{1,2}, Anna M. Stewart-Ibarra^{3,4,5}, Timothy P. Endy^{4,5,6}, Mark Abbott^{4,6}, Cinthya
5 Cueva⁴, Froilán Heras^{4,5}, Mark Polhemus⁷, Efraín Beltrán-Ayala⁸, Sadie J. Ryan^{1,2*}

6

7 ¹Quantitative Disease Ecology and Conservation (QDEC) Lab Group, Department of Geography,
8 University of Florida, Gainesville, Florida, United States of America

9 ²Emerging Pathogens Institute, University of Florida, Gainesville, Florida, United States of
10 America

11 ³Inter-American Institute for Global Change Research, Department of Montevideo, Montevideo,
12 Uruguay

13 ⁴Institute for Global Health and Translational Studies, State University of New York (SUNY)
14 Upstate Medical University, Syracuse, New York, United States of America

15 ⁵Department of Medicine, State University of New York (SUNY) Upstate Medical University,
16 Syracuse, New York, United States of America

17 ⁶Department of Microbiology and Immunology, State University of New York (SUNY) Upstate
18 Medical University, Syracuse, New York

19 ⁷Coalition for Epidemic Preparedness Innovations (CEPI), London, United Kingdom

20 ⁸Universidad Técnica de Machala, Machala, Ecuador

21

22

23 *Corresponding author

24 E-mail: sjryan@ufl.edu (SJR)

25

26 **Keywords:** dengue, Ecuador, *Aedes aegypti*, entomological surveillance, household indicators,
27 social-ecological systems, disease ecology, vector control

28

29

30

31

32

33 **Abstract**

34 The management of mosquito-borne diseases is a challenge in southern coastal Ecuador,
35 where dengue is hyper-endemic and co-circulates with other arboviral diseases. Prior work in the
36 region has explored social-ecological factors, dengue case data, and entomological indices. In
37 this study, we bring together entomological and epidemiological data to describe links between
38 social-ecological factors associated with risk of dengue transmission at the household level in
39 Machala, Ecuador. Households surveys were conducted from 2014–2016 to assess the presence
40 of adult *Aedes aegypti* (collected via aspiration) and to enumerate housing conditions,
41 demographics, and mosquito prevention behaviors. Household-level dengue infection status was
42 determined by laboratory diagnostics in 2014–2015. Logistic models and multimodel selection
43 were used to identify social-ecological variables associated with household presence of female
44 *Ae. aegypti* and household dengue infection status, respectively. We identified significant risk
45 factors for household-level dengue infection reflecting household condition, including bamboo
46 cane construction material, shaded patios, and adjacency to abandoned properties, while housing
47 structures in good condition were identified as protective against dengue infection. *Aedes aegypti*
48 presence was associated with a greater than average number people per household and
49 interrupted water supply, but was not associated with household level dengue infections. Models
50 of *Ae aegypti* presence were unstable, and not well resolved in ranking of competing models,
51 suggesting that highly localized entomological surveillance indicators may not be indicative of
52 risk in communities with hyperendemic dengue fever. These findings add to our understanding
53 of the systems of mosquito-borne disease transmission in Machala, and in the larger region of
54 southern Ecuador, aiding in the development of improved vector surveillance efforts, and
55 targeted interventions.

56 **Introduction**

57 The management of arthropod-borne viruses (arboviruses) is a fundamental task of public health
58 agencies throughout much of Latin America and the tropics. Pathogens transmitted by the
59 mosquito *Aedes aegypti*, such as dengue virus, impose some of the greatest growing disease
60 burdens in this region [1]. Dengue has increased 30-fold over the past 50-years, globally and in
61 South America, and over the past decade more than 19.6 million cases of dengue infection were
62 reported in the Americas [2–4]. Dengue, like many arboviral infections, has limited options for
63 clinical treatment and marketable vaccines, leaving vector control as a primary means of
64 preventing and mitigating large outbreaks [5–7]. While there are many established protocols for
65 designing and conducting public health vector control activities, these are subject to logistical
66 constraints, resource availability, and fluctuating funding streams [6–11]. Development of
67 targeted vector control strategies that focus on surveillance indicators or known risk factors for
68 transmission offer a possible solution for implementing effective control measures in resource-
69 limited communities (e.g., Lippi et al. 2020) [12]. Yet, social and ecological risk of exposure to
70 arboviral infections is often understudied at fine spatial scales at which most vector control
71 interventions operate, where household-level features and behaviors can vary greatly within the
72 built environment [13–15], leading to varying risk of exposure to vectors, and thus, transmission.

73 Entomological and epidemiological surveillance systems are integral components of
74 public health vector control programs, where incoming data are key for informing management
75 strategies and developing policy [11,16,17]. Vector abundance data are often used by public
76 health agencies to trigger vector control responses, though the utility of directly inferring
77 transmission risk from *Ae. aegypti* densities is difficult to establish, and varies widely across
78 surveillance programs [17–19]. Beyond informing public agency responses, surveillance

79 indicators can be used in the broader context of modeling risk by establishing correlative links
80 between health outcomes and the social-ecological conditions in which they occur [20,21].
81 Ecological studies that establish such connections are routinely seen in the public health
82 literature [22–24]. While observational studies are inappropriate for inferring causality, they
83 remain useful for informing current decision-making and guiding further epidemiological
84 investigations.

85 In Ecuador, the national public health agency, the Ministerio de Salud Pública (MSP),
86 oversees vector control and surveillance initiatives [25,26]. Ecuador’s southern coastal region is
87 an area of historically high mosquito-borne disease activity [27,28]. El Oro province, located on
88 the border with Peru, is consistently burdened with high case numbers of dengue, where four
89 serotypes of dengue virus are in circulation (DENV1-4), and more recently, chikungunya and
90 Zika viruses [27]. The port city of Machala, with an estimated population of over 280,000, is
91 Ecuador’s fourth largest city, the capital of El Oro province, and a major epicenter of
92 commercial agricultural trade (Fig. 1) [29].

93 Dengue is hyperendemic in Machala, where *Ae. aegypti* is prevalent and transmission can
94 occur throughout the year [30,31]. The high incidence of dengue, large population, and
95 longstanding history of vector control and surveillance activities make Machala an ideal setting
96 for studying arboviral transmission systems. Several previous studies conducted in Machala have
97 assessed risk factors for dengue fever outbreaks at the mesoscale (e.g. neighborhoods or census
98 blocks), including vector densities, environmental drivers, sociodemographic characteristics,
99 community perceptions, and service accessibility [12,14,25,30,32–34]. The findings of these
100 studies are useful in a public health advisory capacity, providing information that guides
101 decision-making and research. Nevertheless, studies conducted on data aggregated to

102 administrative units face limitations in terms of guiding spatially explicit interventions on fine
103 scales, and we cannot assume that neighborhood-level associations will be observable at the level
104 of households, where people are exposed to mosquitoes [35–37], and at which scale
105 interventions such as fogging (household insecticidal spraying), or individual prevention
106 behaviors occur.

107 The objective of this study is to identify relationships between household social-
108 ecological factors and *Aedes aegypti* presence and dengue cases, respectively, in Machala,
109 Ecuador. We also test if *Aedes aegypti* presence is an indicator of household dengue fever cases.
110 Household characteristics associated with the dengue fever transmission cycle are potentially
111 identifiable targets for public health vector control intervention to reduce mosquitoes.

112 **Methods**

113 *Cluster study design* – The data used in this study were collected as part of a SUNY Upstate
114 Medical University epidemiological study of dengue in Machala, Ecuador conducted from 2014–
115 2016. Four sentinel clinics operated by the MSP were selected for passive detection of dengue
116 cases used to enroll households into the study. These clinics were chosen based on historical
117 patterns of dengue detection and available medical resources. A cluster study design was used to
118 enroll participants. Index cases were randomly selected from clinically diagnosed dengue fever
119 cases passively detected in sentinel healthcare facilities. After identifying index households, up
120 to four additional households were enrolled within a 200m radius of each index house,
121 representing the approximate flight range of *Ae. aegypti* mosquitoes; this study protocol has been
122 described in detail previously [38]. Each household was visited once during the three-year study
123 period, at which time household survey data, entomological data, and blood samples from

124 individuals were collected. Locations of enrolled households (i.e. latitude and longitude
125 coordinates) were recorded using Garmin handheld global positioning system (GPS) units.

126 *Household survey* – Field teams comprising local Ecuadorians visited each enrolled household,
127 administering a survey to the head of household. Survey questions were developed based on
128 previous studies from the region, which identified potential local factors of interest as they relate
129 to risk of dengue transmission [30]. The survey was used to collect information on household
130 demographics, socioeconomic status, access to municipal services, and human behaviors that
131 may influence the presence of mosquitoes (e.g. water storage practices and use of pesticides).
132 Field teams also visually assessed housing conditions and structures, collecting data on patio
133 conditions, window screening, and construction materials. General housing condition was ranked
134 by technicians on site, ranging from “good” housing, which consisted of new construction in
135 good repair (e.g. no holes in walls, maintained roof, etc.), to “poor” conditions where structures
136 were not maintained (e.g. older buildings in disrepair, observable damage to structure, etc.).

137 *Entomological survey* – Field teams of entomology technicians visited households enrolled in the
138 cluster study from 2014–2016. Households were surveyed for mosquitoes within two days of
139 enrollment to assess abundance and presence of *Ae. aegypti*. Sampling consisted of backpack
140 aspirator (Prokopack) collection of adult mosquitoes in and around households [39]. Adult
141 mosquitoes were stored in coolers in the field, then identified, counted, and sorted by sex and
142 species (i.e. *Ae. aegypti* versus other) at the entomological lab at the Technical University of
143 Machala. Abundance counts of female *Ae. aegypti* for each year of the study were aggregated by
144 households into a binary (i.e. presence/absence) dataset for statistical modeling.

145 *Human case data* – Data on dengue infection status were collected for enrolled households from
146 2014–2015; diagnostic results were not available for 2016. The study protocol for collection of

147 human case data was reviewed and approved by the Institutional Review Boards at the State
148 University of New York (SUNY) Upstate Medical University, Cornell University, the Human
149 Research Protection Office of the U.S. Department of Defense, the Luis Vernaza Hospital in
150 Guayaquil, Ecuador, and the Ecuadorian MSP. Prior to initiating the study, all participants, or
151 adult legal guardians, engaged in a written informed consent process. Cases detected via passive
152 clinical surveillance were informed that they may be randomly selected to participate in the
153 cluster study prior to signing the informed consent. The study included children (> 6 months) to
154 adults who were evaluated for DENV infection.

155 Laboratory diagnostic tests for DENV were run on blood samples collected from study
156 participants. These included NS1 rapid strip tests (Panbio Dengue Early Rapid), ELISA assays
157 for NS1 (Panbio Dengue Early ELISA), IgM immunoassays (Panbio Dengue Capture IgM), and
158 RT-PCR. Full details of the diagnostic testing used in this study are outlined in Stewart-Ibarra et
159 al. (2018) [27]. Household members were considered positive for DENV infection if at least two
160 diagnostic tests were positive. Case counts for each given year of the study were aggregated by
161 households into a binary dataset for statistical modeling.

162 *Statistical Analysis* – Data from households enrolled in the Machala study were assessed for the
163 possible influence of the clustered study design on data structure, ensuring the selection of an
164 appropriate statistical modeling framework. Intraclass correlation coefficient values indicated
165 that household clusters did not impact observed variance in the data [40]. Consequently, logistic
166 regression with multimodel selection was conducted to identify factors influencing the household
167 presence of *Ae. aegypti* mosquitoes or dengue cases, respectively. We employed a generalized
168 linear model (GLM) statistical framework, specifying a logistic modeling distribution (GLM,
169 family = binomial, link = logit), to identify household-level influences on outcomes of interest

170 (i.e. mosquito presence or presence of dengue cases). Model searches were performed in R (ver.
171 3.6.2), using the ‘glmulti’ package for multimodel selection, and run until convergence using
172 glmulti’s genetic algorithm (GA) [41]. The top models from each search were ranked via Akaike
173 Information Criterion, corrected for small sample size (AICc).

174 Variance inflation factors (VIF) were calculated to evaluate multi-collinearity in
175 household survey variables, with values below 10 indicating low collinearity [42]. Stability of
176 top models was assessed via condition numbers (k), where values below 30 indicate stable
177 models [43]. Global Moran’s I with inverse distance weighting was performed in ArcMap (ver.
178 10.6.1, ESRI, Redlands, CA, USA) on the residuals from the best-fit models to test for presence
179 of spatial autocorrelation, a violation of GLM assumptions [44].

180 **Results**

181 Ninety-one cases with lab-confirmed acute symptomatic DENV infections were selected
182 for this study via passive surveillance at MSP sentinel facilities during the 2014–2016 study
183 period. These index cases were used to subsequently enroll an additional 369 households into the
184 cluster study, for a total of 460 households in Machala, spanning 91 sampling clusters surveyed
185 for household risk factors and mosquito presence during the study (Fig. 1C, Fig. 2).

186 *Aedes aegypti* mosquitoes were collected in 54.1% of households (n=249), and 43.9% of
187 households (n=202) had female *Ae. aegypti* present. Summary household surveys results are
188 presented in Table 1.

189

190

191 **Table 1.** Summary of social-ecological variables collected from 2014–2016 household surveys
 192 in Machala, Ecuador. Dengue survey households represent a subset of households where
 193 entomological surveys were conducted.

Parameter	Households (n=460)	%	Households (n=141)	%
	Entomological Survey		Dengue Survey	
Housing conditions				
Good Condition Housing	144	32.0%	55	39.0%
Poor Condition Housing	55	12.0%	16	11.3%
Cane House Construction	32	7.2%	9	6.4%
Wood House Construction	9	2.0%	2	1.4%
House is Rented	40	9.5%	15	10.6%
Piped Water in Household	320	76.0%	100	70.9%
Interruptions in Piped Water	245	53.3%	78	55.3%
Municipal Garbage Collection	400	95%	130	92.2%
Municipal Sewage	356	84.8%	119	84.4%
Septic Tank	54	12.8%	20	14.2%
Air Conditioning	30	7.1%	13	9.2%
Uses a Fan	164	39.0%	70	49.6%
Screens on Windows	102	22.8%	44	31.2%
Window Screen in Good Condition	88	19.7%	35	24.8%
Access to Paved Roads	278	62.2%	68	48.2%
Standing Water Present	213	49.5%	72	51.1%
Adjacent to Abandoned Housing	119	26.6%	49	34.8%
Patio Present	367	82.1%	111	78.7%
Patio in Bad Condition	81	18.1%	21	14.9%
Patio Shaded (> 50%)	56	12.5%	19	13.5%
Household Demographics and Practices				

Head of Household (HOH) Employed	359	85.7%	120	85.1%
HOH male	323	76.7%	103	73.0%
HOH Earns Less than Minimum Wage	74	17.6%	11	7.8%
HOH Has Secondary Education	161	38.2%	57	40.4%
Stores Water	283	67.2%	96	68.1%
Know mosquitoes transmit dengue	372	88.8%	124	87.9%
Know standing water produces mosquitoes	402	95.9%	136	95.7%
Uses Larvicide	98	23.3%	47	33.3%
Uses Abate	151	35.9%	2	1.4%

194

195 Housing conditions vary considerably in Machala, with approximately one third (32%) of
 196 surveyed housing classified in good condition, and 12% of housing structures classified in poor
 197 condition. Access to municipal services among sampled households was high, with 62.2%
 198 accessible by paved roads, 76.0% having access to piped water, 84.8% with access to sewage,
 199 and 95.0% receiving garbage collection services. The head of household was employed in 85.3%
 200 of surveyed households, and 17.6% of heads of household earned less than the minimum wage.

201 Four hundred study participants from enrolled households were tested for dengue
 202 infection status during 2014 –2015, and 311 of these had valid diagnostic test results and
 203 complete household and entomological survey data. Infection status during 2014–2015 was
 204 aggregated to the household level for 141 households in 33 sampling clusters (Fig. 1D). Of these
 205 households, 29.08% had one or more household members positive for dengue. All four DENV
 206 serotypes were detected in Machala during the study period, and of the thirty-two households
 207 tested for dengue serotype, DENV-2 (56.3%) and DENV-1 (40.6%) were the most prevalent
 208 infections. *Aedes aegypti* mosquitoes were collected in 57.4% of households (n=81) that were

209 tested for dengue infection, and 49.6% of these households had female *Ae. aegypti* present
 210 (n=70). Model selection for household presence of female *Ae. aegypti* in 2014–2016 yielded 53
 211 models within 2 AICc units of the best fit (top ranked) model, indicating a lack of easily
 212 distinguishable informative explanatory variables. The number of people in the household,
 213 presence of paved roads, and water interruptions were statistically significant risk factors
 214 associated with female *Aedes aegypti* presence in the top-ranked model; housing constructed of
 215 bamboo cane and houses with air conditioning were found to be protective against mosquito
 216 presence (Table 2). Effect sizes in the model were small, and model instability was high
 217 (k=360.94).

218 **Table 2.** Best-fit logistic regression model of household female *Aedes aegypti* presence in
 219 Machala, Ecuador.

Model	Estimate	SE	P-Value	OR	95% CI
Intercept	-2.79	0.73	< 0.001		
HoH Age	0.01	0.01	0.106	1.01	0.99 – 1.03
No. People in Household	0.14	0.06	0.014	1.15	1.04 – 1.29
House in Poor Condition	0.65	0.37	0.077	1.84	0.91 – 3.86
Cane Housing	-1.11	0.50	0.028	0.28	0.10 – 0.72
Wood Housing	-1.07	0.76	0.160	0.37	0.07 – 1.54
Screens in Good Condition	-0.53	0.27	0.051	0.59	0.34 – 1.01
Paved Roads	0.46	0.23	0.042	1.70	1.08 – 2.68
Water Interruptions	0.58	0.21	0.007	1.76	1.16 – 2.68
Trash Collection	1.02	0.60	0.087	0.99	0.62 – 1.57
Air Conditioning	-1.39	0.52	0.007	0.25	0.08 – 0.63

220 AICc=548.86, pseudo R²=0.16

221 Model selection for household presence of dengue cases in 2014–2015 yielded 26 models
222 within 2 AICc units of the best fit (top ranked) model. Housing constructed of cane, presence of
223 nearby abandoned houses, shaded patios, HOH employment status, and air conditioning were
224 statistically significant risk factors for dengue cases (Table 3). Households classified in good
225 condition were protective. Presence of female *Ae. aegypti* was not selected as a predictor in the
226 best fit model for household dengue cases, but was included as a variable in 22.2% of models
227 within 2 AICc units of the best model, but never achieved statistical significance. The best fit
228 model’s low condition number (k=5.46) indicated model stability.

229 **Table 3.** Best-fit logistic regression model of household presence of dengue cases in Machala,
230 Ecuador.

Model	Estimate	SE	P-Value	OR	95% CI
Intercept	-3.21	0.98	0.001		
House in Good Condition	-1.37	0.52	0.009	0.26	0.09 – 0.71
House Made of Cane	1.55	0.85	0.068	4.69	0.89 – 24.65
Adjacent to abandoned property	1.05	0.45	0.020	2.86	1.18 – 6.94
Shaded Patio	1.75	0.61	0.004	5.77	1.75 – 19.04
HOH Works	2.04	0.94	0.030	7.71	1.21 – 48.89
Air Conditioning	1.51	0.69	0.028	4.53	1.17 – 17.51

231 AICc=156.12, pseudo $R^2=0.23$

232
233 Intraclass correlation (ICC) values for both entomological and human case datasets were
234 extremely low (i.e. near or equal to zero), indicating that the clustered study design did not
235 meaningfully contribute to variance in the data. Results from the VIF analysis showed that only
236 two variables from the household survey – brick housing construction and primary education –
237 contributed to model collinearity (i.e. $VIF \geq 10$), which can lead to unreliable estimates of error

238 for regression coefficients; these variables were excluded from model searches. Despite the
239 clustered arrangement of households in the study design, global clustering was not detected in
240 best fit model residuals for mosquito presence (Moran's $I = 0.06$, $p\text{-value} = 0.17$) or dengue
241 presence (Moran's $I = -0.13$, $p\text{-value} = 0.18$), indicating no impact of spatial autocorrelation on
242 model results.

243 **Discussion**

244 This study provides a household-level assessment of dengue fever risk in Machala, Ecuador, a
245 city with historically high burden of the disease. Indicators of mosquito presence are at times
246 used by public health agencies as a proxy for risk of disease exposure and basis for vector
247 control operations, particularly in absence of active human surveillance data [2,6]. This is an
248 intuitive approach, as widespread surveillance of human cases is resource intensive, and vector
249 presence is a necessary component of transmission cycles for pathogens like dengue virus
250 [45,46]. Identification of factors that promote mosquito presence would provide valuable
251 information for creating targeted interventions. For example, a recent study in Huaquillas,
252 Ecuador, an arid city to the South of Machala on the Peruvian border, found associations
253 between household *Ae. aegypti* presence and the reliability of water services and septic systems,
254 respectively, which could be leveraged into actionable abatement strategies [47]. While *Ae.*
255 *aegypti* is closely associated with built urban and human environments, we could not identify
256 distinct links between increased risk of mosquito presence and household risk factors assessed
257 here, even with detailed, household-level data across multiple clusters of households spanning a
258 range of social-ecological conditions in the city. This analysis did not yield stable models for
259 mosquito presence, suggesting that measured social risk factors and personal protective
260 behaviors did not reliably indicate local presence of female *Ae. aegypti* in Machala. In absence of

261 identifiable household targets for intervention, following current MSP advisories and educational
262 initiatives for larval source reduction of container-breeding mosquitoes is recommended [2,26].

263 Unlike mosquito presence, dengue infection status of households in Machala was
264 connected to variables describing housing conditions. Household factors that influenced presence
265 of dengue fever were broadly consistent with other studies from this region, where housing
266 conditions across multiple scales have been linked to transmission risk in Ecuador
267 [14,20,30,34,43,48]. Housing structure in good condition was identified as the top protective
268 factor against dengue presence, a finding which has been observed in other studies conducted in
269 coastal Ecuador [20,30]. Houses in good repair limit exposure to mosquitoes, and the association
270 between substandard housing structure and arboviral risk has been repeatedly documented in
271 locations beyond Ecuador [49–51]. Houses made of cane were a risk factor for dengue, which is
272 consistent with typical housing found in low income areas with active dengue transmission in
273 Ecuador [52]. Generally found in the urban periphery of Machala, housing constructed from cane
274 does not exclude potentially infectious mosquitoes from entering households [12]. Adjacency to
275 abandoned properties and presence of shaded patios were identified as risk factors in this study,
276 and have also been linked to transmission risk in other studies in the region, promoting favorable
277 habitat and oviposition sites for container-breeding mosquitoes [14,48].

278 Air conditioning and HOH employment were risk factors for dengue presence in this
279 study. These relationships are counterintuitive, as these factors are typically regarded as
280 protective against exposure to mosquitoes in other systems [53–55]. Air conditioning eliminates
281 the need to open door and windows for ventilation, reducing exposure to mosquitoes. Head of
282 household employment is often a marker for higher socioeconomic status, which is generally
283 associated with improved housing quality and lower risk [6,51]. Although the survey tool used in

284 this study represents a major step forward in the collection of fine-scale data regarding risk of
285 dengue transmission in Ecuador, the questions did not necessarily capture the nuance of some
286 risk elements. For example, MSP technicians in Machala have observed that families will only
287 run air conditioning units at night, relying on open windows to cool houses during the day (*pers.*
288 *comm.*). Patterns of human behavior not captured in the survey could account for the
289 counterintuitive relationship; similarly, the household survey tool did not account for events
290 outside of the home, where exposures associated with travel and employment may occur. Such
291 an association was reported in the Galapagos, where travel patterns were associated with self-
292 reported dengue illness [43].

293 A previous study, conducted by Kenneson et al. (2017), also examined household dengue
294 fever risk in Machala during 2014–2015 [48]. In the current study, we restricted analyses to
295 households with complementary dengue case and entomological survey data, and used a more
296 conservative dengue case definition, requiring at least two positive diagnostic tests, excluding
297 IgG immunoassay results, which indicate longer term exposures [4]. The 2017 study, with
298 broader case definitions and a larger group of households, also found that adjacency to
299 abandoned properties and shaded patios were significant risk factors for dengue fever, but also
300 identified frequent water interruptions as a significant risk factor. We found that frequent water
301 interruptions was selected as a risk factor in the best-fit (but unstable) model for *Ae. aegypti*
302 presence, but was not selected for in the best-fit model for dengue case presence, using the more
303 conservative case definition. The 2017 study did not examine overall housing condition, making
304 direct comparisons of findings unfeasible, but instead demonstrated that preventive actions and
305 perceptions were negatively associated with dengue fever outcomes. While these studies
306 leverage overlapping sampling events, the differences in objectives, case definitions, and factors

307 analyzed, indicate a need for further examination of the implications for connections in the
308 system between the transmission conditions, the scale of human behavior and household impact,
309 and which components of the lived environment interact with the vector-human transmission
310 cycle.

311 Interestingly, female *Aedes aegypti* presence was not identified as a significant risk factor
312 for household dengue infection status in the top ranked models in this study. Mosquito
313 abundance data have been shown in some instances to correlate with risk of dengue infection,
314 particularly in longitudinal studies that can account for temporal variability and lagged effects
315 [18,56]. Yet, indoor household *Ae. aegypti* densities can be notoriously low, and samples
316 collected with backpack aspirators are often highly dependent on factors such as user skill and
317 complexity of the indoor environment [57–59]. Furthermore, some studies suggest that
318 alternative trapping methods, such as the use of passive BG-Sentinel traps, may be better suited
319 for targeting *Ae. aegypti* [9,58,59]. In this study, we did not use mosquito abundance as a
320 dependent variable in modeling due to low counts of adult mosquitoes (e.g. <10) recorded in
321 household surveys. Nevertheless, backpack aspiration is a logistically feasible surveillance
322 method for many vector control agencies in Latin America, and there is evidence of high
323 sensitivity for detecting the presence of mosquitoes in households [18,39,60]. Also notable is the
324 lack of association between household dengue cases in this study and indicators of water
325 availability. Frequent water interruptions promote water storage behaviors, thus impacting
326 mosquito reproduction and abundance, and interruptions in water service was selected as a
327 predictor in the unstable best-fit model for mosquito presence in this study [61]. Access to piped
328 water and water storage have been linked to both dengue infections and the proliferation of *Ae.*
329 *aegypti* across multiple spatial scales, in Machala and other coastal Ecuadorian cities

330 [14,20,30,31,47,62]. The lack of association between mosquito presence and dengue infections
331 indicated in this study may instead reflect a disconnect between household conditions and
332 locations where transmission is occurring, particularly in the context of hyperendemic dengue
333 transmission in Machala. Studies conducted in other Latin American cities with hyperendemic
334 dengue transmission have shown that within cities, transmission risk is influenced by
335 neighboring census tracts, and no specific locations within the city were driving dengue cases
336 [63,64]. Daily human movements and social connections within hyperendemic spaces can also
337 drive dengue transmission, particularly on fine spatial scales [65,66]. Given the high prevalence
338 of the disease in the community, risk of transmission in Machala may be more dependent on
339 social and behavioral factors that increase exposure to infective mosquito bites, rather than mere
340 presence or absence of the vector in the immediate vicinity of the household. Although not
341 informative at the household level in this study, municipal and sub-regional entomological
342 surveillance is still a cornerstone of successful public health vectors control programs, where
343 mosquito counts are necessary to set goals and proactively trigger the deployment of vector
344 control services ahead of epidemic peaks [6,67,68]. In locations with hyperendemic arboviral
345 transmission, like Machala, surveillance of human cases may provide better primary information
346 for guiding policy and developing community interventions on fine spatial scales.

347 Household-level data are useful in advancing our understanding of localized disease
348 transmission and exposure risk, yet there are caveats that must be considered before findings are
349 used in an applied capacity. The statistical models used in this study are correlative, and we
350 therefore must avoid assigning causality to any significant relationships without further
351 investigation. Furthermore, data collected via household surveys certainly provide information
352 on a fine scale, but they do not capture the full social-ecological transmission environment. This

353 is exemplified by the lack of information concerning potential workplace and school exposures,
354 which are part of the greater transmission social-ecological system at this scale. We also caution
355 against reducing localized risk indicators into a dichotomy of “poor” versus “affluent”
356 neighborhoods. This reductionist approach does not account for nuances in risk due to personal
357 behaviors, or exposure due to hyperendemic presence of mosquito vectors. Focusing solely on
358 economic indicators of risk has the additional potential to generate stigma in communities, which
359 can undermine public health initiatives [69].

360 The results of this study aid us in identifying areas for further study as potential targets
361 for developing proactive mosquito control activities and intervention strategies in Machala. The
362 indication of missing linkages between entomological exposure risk indicators at the household
363 level, where vector control intervention is often carried out, and the indicators of dengue
364 infection, point to a need for a more complete examination of the social-ecological transmission
365 environment. Nonetheless, comparing our findings to previously published work, we have
366 identified commonalities in risk factors across spatial scales. Thus, we indicate that some
367 household-level risk factors, such as condition of housing structure, may be generalizable in a
368 policy development capacity.

369 **Acknowledgments**

370 Many thanks to the SUNY Upstate field technicians and other staff at the Ministry of Health of
371 Ecuador, who generated the data used in this analysis. We thank our local field team and
372 coordinators in Machala for their dedication and support: Jefferson Adrian, Victor Arteaga, Jose
373 Cueva, Reagan Deming, Carlos Enriquez, Prissila Fernandez, Froilan Heras, Naveed Heydari,
374 Jesse Krisher, Lyndsay Krisher, Elizabeth McMahon, Eunice Ordoñez, Tania Ordoñez, and
375 Rachel Sippy.

376 **References**

- 377 1. Shepard DS, Coudeville L, Halasa YA, Zambrano B, Dayan GH. Economic impact of
378 dengue illness in the Americas. *Am J Trop Med Hyg.* 2011;84: 200–207.
379 doi:10.4269/ajtmh.2011.10-0503
- 380 2. PAHO. Integrated management strategy for arboviral disease prevention and control in the
381 Americas. Washington, D.C., U.S.A: Pan American Health Organization, Pan American
382 Sanitary Bureau, Regional Office of the World Health Organization; 2020.
- 383 3. Pan American Health Organization. Plan continental de ampliación e intensificación del
384 combate al *Aedes aegypti*. Informe de un grupo de trabajo, Caracas, Venezuela.
385 Washington DC: PAHO; 1997. Report No.: OPS/HCP/HCT/90/97.
- 386 4. Special Programme for Research and Training in Tropical Diseases, World Health
387 Organization, editors. *Dengue: guidelines for diagnosis, treatment, prevention, and control.*
388 New ed. Geneva: TDR : World Health Organization; 2009.
- 389 5. WHO. Questions and answers on dengue vaccines: efficacy and longer-term safety of
390 CYD-TDV. World Health Organization; 2015.
- 391 6. WHO. Global Strategy for dengue prevention and control, 2012-2020. World Health
392 Organization Report; 2012.
- 393 7. Morrison AC, Zielinski-Gutierrez E, Scott TW, Rosenberg R. Defining Challenges and
394 Proposing Solutions for Control of the Virus Vector *Aedes aegypti*. *PLoS Med.* 2008;5:
395 e68. doi:10.1371/journal.pmed.0050068
- 396 8. Alonso PL, Tanner M. Public health challenges and prospects for malaria control and
397 elimination. *Nat Med.* 2013;19: 150–155. doi:10.1038/nm.3077
- 398 9. CDC. Surveillance and Control of *Aedes aegypti* and *Aedes albopictus* in the United States.
399 Centers for Disease Control; 2015. Available:
400 [http://www.cdc.gov/chikungunya/pdfs/surveillance-and-control-of-aedes-aegypti-and-](http://www.cdc.gov/chikungunya/pdfs/surveillance-and-control-of-aedes-aegypti-and-aedes-albopictus-us.pdf)
401 [aedes-albopictus-us.pdf](http://www.cdc.gov/chikungunya/pdfs/surveillance-and-control-of-aedes-aegypti-and-aedes-albopictus-us.pdf)
- 402 10. K. Moise I, C. Zulu L, O. Fuller D, C. Beier J. Persistent Barriers to Implementing
403 Efficacious Mosquito Control Activities in the Continental United States: Insights from
404 Vector Control Experts. In: J. Rodriguez-Morales A, editor. *Current Topics in Neglected*
405 *Tropical Diseases.* IntechOpen; 2019. doi:10.5772/intechopen.76774
- 406 11. Eisen L, Beaty BJ, Morrison AC, Scott TW. Proactive Vector Control Strategies and
407 Improved Monitoring and Evaluation Practices for Dengue Prevention. *J Med Entomol.*
408 2009;46: 1245–1255. doi:10.1603/033.046.0601
- 409 12. Lippi CA, Mao L, Stewart-Ibarra AM, Heydari N, Ayala EB, Burkett-Cadena ND, et al. A
410 network analysis framework to improve the delivery of mosquito abatement services in
411 Machala, Ecuador. *Int J Health Geogr.* 2020;19. doi:10.1186/s12942-020-0196-6

- 412 13. Goodman H, Egizi A, Fonseca DM, Leisnham PT, LaDeau SL. Primary blood-hosts of
413 mosquitoes are influenced by social and ecological conditions in a complex urban
414 landscape. *Parasit Vectors*. 2018;11. doi:10.1186/s13071-018-2779-7
- 415 14. Stewart Ibarra AM, Ryan SJ, Beltrán E, Mejía R, Silva M, Muñoz Á. Dengue Vector
416 Dynamics (*Aedes aegypti*) Influenced by Climate and Social Factors in Ecuador:
417 Implications for Targeted Control. Mores CN, editor. *PLoS ONE*. 2013;8: e78263.
418 doi:10.1371/journal.pone.0078263
- 419 15. Padmanabha H, Correa F, Rubio C, Baeza A, Osorio S, Mendez J, et al. Human Social
420 Behavior and Demography Drive Patterns of Fine-Scale Dengue Transmission in Endemic
421 Areas of Colombia. Paul R, editor. *PLOS ONE*. 2015;10: e0144451.
422 doi:10.1371/journal.pone.0144451
- 423 16. Gubler DJ, Casta-Valez A. A program for prevention and control of epidemic dengue and
424 dengue hemorrhagic fever in Puerto Rico and the U.S. Virgin Islands. *Bull Pan Am Health*
425 *Organ*. 1991;25: 237–247.
- 426 17. Focks, Dana A. A review of entomological sampling methods and indicators for dengue
427 vectors. Geneva: World Health Organization; 2004. Available:
428 <http://www.who.int/iris/handle/10665/68575>
- 429 18. Cromwell EA, Stoddard ST, Barker CM, Van Rie A, Messer WB, Meshnick SR, et al. The
430 relationship between entomological indicators of *Aedes aegypti* abundance and dengue
431 virus infection. *PLoS Negl Trop Dis*. 2017;11: e0005429.
432 doi:10.1371/journal.pntd.0005429
- 433 19. Takken W, editor. *Ecological aspects for application of genetically modified mosquitoes*.
434 Dordrecht: Kluwer Acad. Publ; 2003.
- 435 20. Lippi CA, Stewart-Ibarra AM, Muñoz ÁG, Borbor-Cordova MJ, Mejía R, Rivero K, et al.
436 The Social and Spatial Ecology of Dengue Presence and Burden during an Outbreak in
437 Guayaquil, Ecuador, 2012. *Int J Environ Res Public Health*. 2018;15.
438 doi:10.3390/ijerph15040827
- 439 21. Lippi CA, Stewart-Ibarra AM, Loor MEFB, Zambrano JED, Lopez NAE, Blackburn JK, et
440 al. Geographic shifts in *Aedes aegypti* habitat suitability in Ecuador using larval
441 surveillance data and ecological niche modeling: Implications of climate change for public
442 health vector control. *PLoS Negl Trop Dis*. 2019;13: e0007322.
443 doi:10.1371/journal.pntd.0007322
- 444 22. Waldman EA, Díaz-Quijano FA. Factors Associated with Dengue Mortality in Latin
445 America and the Caribbean, 1995–2009: An Ecological Study. *Am J Trop Med Hyg*.
446 2012;86: 328–334. doi:10.4269/ajtmh.2012.11-0074
- 447 23. Zellweger RM, Cano J, Mangeas M, Taglioni F, Mercier A, Despinoy M, et al.
448 Socioeconomic and environmental determinants of dengue transmission in an urban setting:

- 449 An ecological study in Nouméa, New Caledonia. Messer WB, editor. PLoS Negl Trop Dis.
450 2017;11: e0005471. doi:10.1371/journal.pntd.0005471
- 451 24. Dhewantara PW, Marina R, Puspita T, Ariati Y, Purwanto E, Hananto M, et al. Spatial and
452 temporal variation of dengue incidence in the island of Bali, Indonesia: An ecological
453 study. *Travel Med Infect Dis.* 2019;32: 101437. doi:10.1016/j.tmaid.2019.06.008
- 454 25. Stewart Ibarra AM, Luzadis VA, Borbor Cordova MJ, Silva M, Ordoñez T, Beltrán Ayala
455 E, et al. A social-ecological analysis of community perceptions of dengue fever and *Aedes*
456 *aegypti* in Machala, Ecuador. *BMC Public Health.* 2014;14. doi:10.1186/1471-2458-14-
457 1135
- 458 26. Ministerio de Salud Publica. Proyecto de Vigilancia y Control de Vectores para la
459 Prevencion de al Transmision de Enfermedades Metaxenicas en el Ecuador. Servicio
460 Nacional de Control de Enfermedades Transmitidas por Vectores Artrópodos (SNEM),
461 Ministerio de Salud Publica, Ecuador; 2013. Available:
462 <http://instituciones.msp.gob.ec/dps/snem/images/proyectocontroldevectoresmetaxenicass.pdf>
- 463 27. Stewart-Ibarra AM, Ryan SJ, Kenneson A, King CA, Abbott M, Barbachano-Guerrero A, et
464 al. The Burden of Dengue Fever and Chikungunya in Southern Coastal Ecuador:
465 Epidemiology, Clinical Presentation, and Phylogenetics from the First Two Years of a
466 Prospective Study. *Am J Trop Med Hyg.* 2018;98: 1444–1459. doi:10.4269/ajtmh.17-0762
- 467 28. Alava, A., Mosquera, C., Vargas, W., Real, J. Dengue en el Ecuador 1989-2002. *Rev Ecuat*
468 *Hig Med Trop.* 2005;42: 11–34.
- 469 29. INEC. Proyección de la Población Ecuatoriana, por años calendario, según cantones 2010-
470 2020. Instituto Nacional de Estadística y Censos, Quito, Ecuador; 2019.
- 471 30. Stewart-Ibarra AM, Muñoz ÁG, Ryan SJ, Ayala EB, Borbor-Cordova MJ, Finkelstein JL,
472 et al. Spatiotemporal clustering, climate periodicity, and social-ecological risk factors for
473 dengue during an outbreak in Machala, Ecuador, in 2010. *BMC Infect Dis.* 2014;14.
474 doi:10.1186/s12879-014-0610-4
- 475 31. Quintero J, Brochero H, Manrique-Saide P, Barrera-Pérez M, Basso C, Romero S, et al.
476 Ecological, biological and social dimensions of dengue vector breeding in five urban
477 settings of Latin America: a multi-country study. *BMC Infect Dis.* 2014;14.
478 doi:10.1186/1471-2334-14-38
- 479 32. Heydari N, Larsen D, Neira M, Beltrán Ayala E, Fernandez P, Adrian J, et al. Household
480 Dengue Prevention Interventions, Expenditures, and Barriers to *Aedes aegypti* Control in
481 Machala, Ecuador. *Int J Environ Res Public Health.* 2017;14: 196.
482 doi:10.3390/ijerph14020196
- 483 33. Lowe R, Stewart-Ibarra AM, Petrova D, García-Díez M, Borbor-Cordova MJ, Mejía R, et
484 al. Climate services for health: predicting the evolution of the 2016 dengue season in
485 Machala, Ecuador. *Lancet Planet Health.* 2017;1: e142–e151. doi:10.1016/S2542-
486 5196(17)30064-5

- 487 34. Stewart-Ibarra AM, Lowe R. Climate and Non-Climate Drivers of Dengue Epidemics in
488 Southern Coastal Ecuador. *Am J Trop Med Hyg.* 2013;88: 971–981. doi:10.4269/ajtmh.12-
489 0478
- 490 35. The Modifiable Areal Unit Problem. Exploring Spatial Scale in Geography. Chichester,
491 UK: John Wiley & Sons, Ltd; 2014. pp. 29–44. doi:10.1002/9781118526729.ch3
- 492 36. Martínez-Bello DA, López-Quílez A, Torres Prieto A. Relative risk estimation of dengue
493 disease at small spatial scale. *Int J Health Geogr.* 2017;16. doi:10.1186/s12942-017-0104-x
- 494 37. Khormi HM, Kumar L. The importance of appropriate temporal and spatial scales for
495 dengue fever control and management. *Sci Total Environ.* 2012;430: 144–149.
496 doi:10.1016/j.scitotenv.2012.05.001
- 497 38. Turell MJ, Dohm DJ, Sardelis MR, O’Guinn ML, Andreadis TG, Blow JA. An update on
498 the potential of North American mosquitoes (Diptera: Culicidae) to transmit West Nile
499 virus. *J Med Entomol.* 2005;42. doi:10.1093/jmedent/42.1.57
- 500 39. Vazquez-Prokopec GM, Galvin WA, Kelly R, Kitron U. A new, cost-effective, battery-
501 powered aspirator for adult mosquito collections. *J Med Entomol.* 2009;46: 1256–1259.
502 doi:10.1603/033.046.0602
- 503 40. Hox JJ, Moerbeek M, van de Schoot R. Multilevel Analysis: Techniques and Applications.
504 3rd ed. Third edition. | New York, NY : Routledge, 2017. |: Routledge; 2017.
505 doi:10.4324/9781315650982
- 506 41. Calcagno V, Mazancourt C de. glmulti: An R Package for Easy Automated Model
507 Selection with (Generalized) Linear Models. *J Stat Softw.* 2010;34.
508 doi:10.18637/jss.v034.i12
- 509 42. Chatterjee S, Hadi AS. Analysis of Collinear Data. Regression Analysis by Example.
510 Hoboken, NJ, USA: John Wiley & Sons, Inc.; 2006. pp. 221–258.
511 doi:10.1002/0470055464.ch9
- 512 43. Ryan S, Lippi C, Nightingale R, Hamerlinck G, Borbor-Cordova M, Cruz B M, et al. Socio-
513 Ecological Factors Associated with Dengue Risk and *Aedes aegypti* Presence in the
514 Galápagos Islands, Ecuador. *Int J Environ Res Public Health.* 2019;16: 682.
515 doi:10.3390/ijerph16050682
- 516 44. Getis A. A History of the Concept of Spatial Autocorrelation: A Geographer’s Perspective.
517 *Geogr Anal.* 2008;40: 297–309. doi:10.1111/j.1538-4632.2008.00727.x
- 518 45. Baly A, Toledo ME, Rodriguez K, Benitez JR, Rodriguez M, Boelaert M, et al. Costs of
519 dengue prevention and incremental cost of dengue outbreak control in Guantanamo, Cuba:
520 Costs of dengue in Guantanamo. *Trop Med Int Health.* 2012;17: 123–132.
521 doi:10.1111/j.1365-3156.2011.02881.x

- 522 46. Guzmán MG, Kourí G. Dengue diagnosis, advances and challenges. *Int J Infect Dis.*
523 2004;8: 69–80. doi:10.1016/j.ijid.2003.03.003
- 524 47. Martin JL, Stewart-Ibarra AM, Ayala EB, Mordecai EA, Sippy R, Heras FH, et al.
525 Household and climate factors influence *Aedes aegypti* risk in the arid city of Huaquillas,
526 Ecuador. *Ecology*; 2020 May. doi:10.1101/2020.05.19.104372
- 527 48. Kenneson A, Beltrán-Ayala E, Borbor-Cordova MJ, Polhemus ME, Ryan SJ, Endy TP, et
528 al. Social-ecological factors and preventive actions decrease the risk of dengue infection at
529 the household-level: Results from a prospective dengue surveillance study in Machala,
530 Ecuador. Messer WB, editor. *PLoS Negl Trop Dis.* 2017;11: e0006150.
531 doi:10.1371/journal.pntd.0006150
- 532 49. Hiscox A, Khammanithong P, Kaul S, Sananikhom P, Luthi R, Hill N, et al. Risk Factors
533 for Mosquito House Entry in the Lao PDR. Snounou G, editor. *PLoS ONE.* 2013;8:
534 e62769. doi:10.1371/journal.pone.0062769
- 535 50. Bradley J, Rehman AM, Schwabe C, Vargas D, Monti F, Ela C, et al. Reduced Prevalence
536 of Malaria Infection in Children Living in Houses with Window Screening or Closed Eaves
537 on Bioko Island, Equatorial Guinea. Chowell G, editor. *PLoS ONE.* 2013;8: e80626.
538 doi:10.1371/journal.pone.0080626
- 539 51. Farinelli EC, Baquero OS, Stephan C, Chiaravalloti-Neto F. Low socioeconomic condition
540 and the risk of dengue fever: A direct relationship. *Acta Trop.* 2018;180: 47–57.
541 doi:10.1016/j.actatropica.2018.01.005
- 542 52. Sippy R, Rivera GE, Sanchez V, Heras F, Morejón B, Beltrán E, et al. Ingested insecticide
543 to control *Aedes aegypti*: developing a novel dried attractive toxic sugar bait device for
544 intra-domiciliary control. *Parasit Vectors.* 2020;13. doi:10.1186/s13071-020-3930-9
- 545 53. Reiter P, Lathrop S, Bunning M, Biggerstaff B, Singer D, Tiwari T, et al. Texas Lifestyle
546 Limits Transmission of Dengue Virus. *Emerg Infect Dis.* 2003;9: 86–89.
547 doi:10.3201/eid0901.020220
- 548 54. Waterman SH, Zielinski-Gutierrez E, Anaya-Lopez L, Brunkard JM, Smith B, Fournier M,
549 et al. Epidemic Dengue and Dengue Hemorrhagic Fever at the Texas–Mexico Border:
550 Results of a Household-based Seroepidemiologic Survey, December 2005. *Am J Trop Med*
551 *Hyg.* 2008;78: 364–369. doi:10.4269/ajtmh.2008.78.364
- 552 55. Demanou M, Pouillot R, Grandadam M, Boisier P, Kamgang B, Hervé JP, et al. Evidence
553 of Dengue Virus Transmission and Factors Associated with the Presence of Anti-Dengue
554 Virus Antibodies in Humans in Three Major Towns in Cameroon. Ribeiro GS, editor. *PLoS*
555 *Negl Trop Dis.* 2014;8: e2950. doi:10.1371/journal.pntd.0002950
- 556 56. Eisen L, García-Rejón JE, Gómez-Carro S, Nájera Vázquez M del R, Keefe TJ, Beaty BJ,
557 et al. Temporal correlations between mosquito-based dengue virus surveillance measures or
558 indoor mosquito abundance and dengue case numbers in Mérida City, México. *J Med*
559 *Entomol.* 2014;51: 885–890. doi:10.1603/me14008

- 560 57. LaCon G, Morrison AC, Astete H, Stoddard ST, Paz-Soldan VA, Elder JP, et al. Shifting
561 Patterns of *Aedes aegypti* Fine Scale Spatial Clustering in Iquitos, Peru. Diuk-Wasser MA,
562 editor. PLoS Negl Trop Dis. 2014;8: e3038. doi:10.1371/journal.pntd.0003038
- 563 58. Maciel-de-Freitas R, Eiras AE, Lourenço-de-Oliveira R. Field evaluation of effectiveness
564 of the BG-Sentinel, a new trap for capturing adult *Aedes aegypti* (Diptera: Culicidae). Mem
565 Inst Oswaldo Cruz. 2006;101: 321–325. doi:10.1590/S0074-02762006000300017
- 566 59. Williams CR, Long SA, Russell RC, Ritchie SA. Field efficacy of the BG-Sentinel
567 compared with CDC backpack aspirators and CO₂-baited EVS traps for collection of adult
568 *Aedes aegypti* in Cairns, Queensland, Australia. J Am Mosq Control Assoc. 2006;22: 296–
569 300. doi:10.2987/8756-971X(2006)22[296:FEOTBC]2.0.CO;2
- 570 60. Koyoc-Cardena E, Medina-Barreiro A, Cohuo-Rodríguez A, Pavía-Ruz N, Lenhart A,
571 Ayora-Talavera G, et al. Estimating absolute indoor density of *Aedes aegypti* using removal
572 sampling. Parasit Vectors. 2019;12. doi:10.1186/s13071-019-3503-y
- 573 61. PAHO. Re-emergence of dengue in the Americas. Epidemiol Bull Pan Am Health Organ.
574 1997;18: 95–98.
- 575 62. Stewart-Ibarra A, Hargrave A, Diaz A, Kenneson A, Madden D, Romero M, et al.
576 Psychological Distress and Zika, Dengue and Chikungunya Symptoms Following the 2016
577 Earthquake in Bahía de Caráquez, Ecuador. Int J Environ Res Public Health. 2017;14:
578 1516. doi:10.3390/ijerph14121516
- 579 63. Adin A, Martínez-Bello DA, López-Quílez A, Ugarte MD. Two-level resolution of relative
580 risk of dengue disease in a hyperendemic city of Colombia. Schieffelin J, editor. PLOS
581 ONE. 2018;13: e0203382. doi:10.1371/journal.pone.0203382
- 582 64. Fuentes-Vallejo M. Space and space-time distributions of dengue in a hyper-endemic urban
583 space: the case of Girardot, Colombia. BMC Infect Dis. 2017;17. doi:10.1186/s12879-017-
584 2610-7
- 585 65. Stoddard ST, Forshey BM, Morrison AC, Paz-Soldan VA, Vazquez-Prokopec GM, Astete
586 H, et al. House-to-house human movement drives dengue virus transmission. Proc Natl
587 Acad Sci. 2013;110: 994–999. doi:10.1073/pnas.1213349110
- 588 66. Reiner RC, Stoddard ST, Scott TW. Socially structured human movement shapes dengue
589 transmission despite the diffusive effect of mosquito dispersal. Epidemics. 2014;6: 30–36.
590 doi:10.1016/j.epidem.2013.12.003
- 591 67. Pepin KM, Leach CB, Marques-Toledo C, Laass KH, Paixao KS, Luis AD, et al. Utility of
592 mosquito surveillance data for spatial prioritization of vector control against dengue viruses
593 in three Brazilian cities. Parasit Vectors. 2015;8: 98. doi:10.1186/s13071-015-0659-y
- 594 68. Schwab SR, Stone CM, Fonseca DM, Fefferman NH. The importance of being urgent: The
595 impact of surveillance target and scale on mosquito-borne disease control. Epidemics. 2017
596 [cited 20 Mar 2018]. doi:10.1016/j.epidem.2017.12.004

597 69. Guttman N, Salmon CT. Guilt, Fear, Stigma and Knowledge Gaps: Ethical Issues in Public
598 Health Communication Interventions. *Bioethics*. 2004;18: 531–552. doi:10.1111/j.1467-
599 8519.2004.00415.x

600

601

602

603

604

605

606

607

608

609

610

611

612

613

614

615

616

617

618

619

620

621

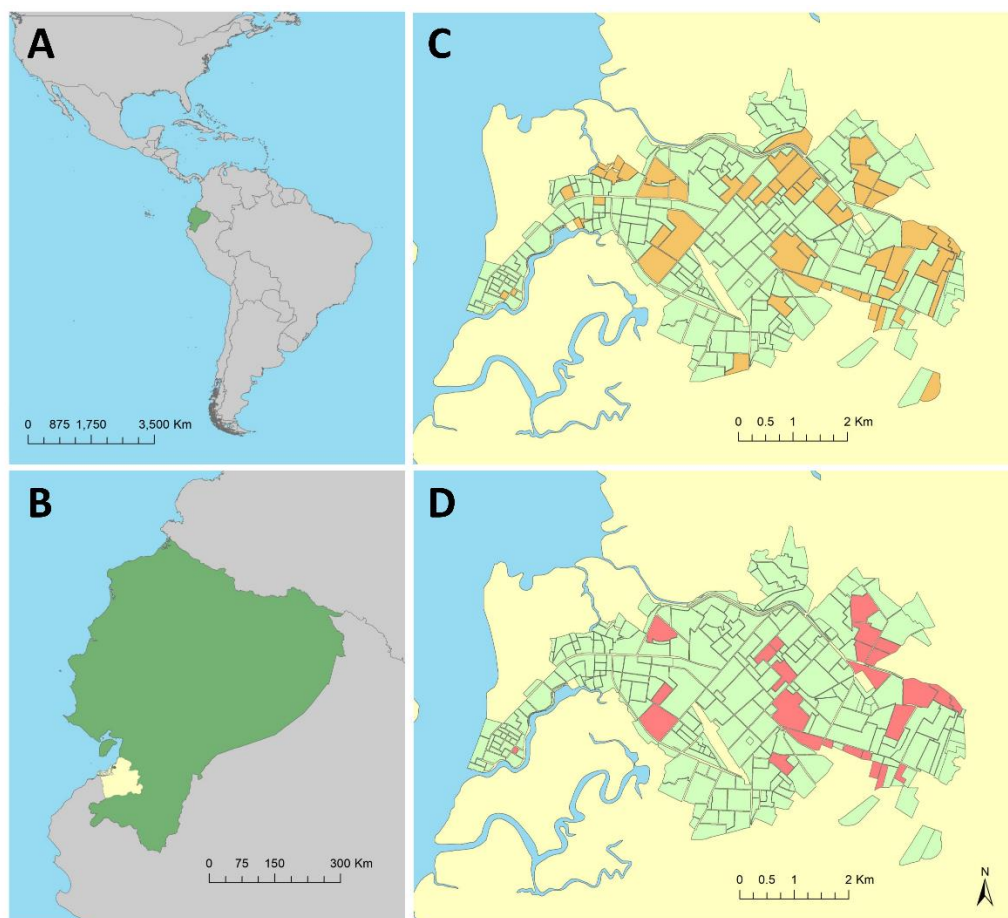
622

623

624

625

626 **Figures**



627

628 **Figure 1.** The study was conducted Machala, a city in the South American (A) country of
629 Ecuador (B), located in El Oro province (B, shown in yellow). Households sampled during this
630 study were located throughout the city of Machala, consisting of 443 households in 91 sampling
631 clusters surveyed for *Aedes aegypti* mosquitoes (C), and 141 households in 33 sampling clusters
632 surveyed for both *Ae. aegypti* mosquitoes and dengue infection status (D). Household locations
633 were aggregated to census block for de-identification purposes in these figures.

634

635

636

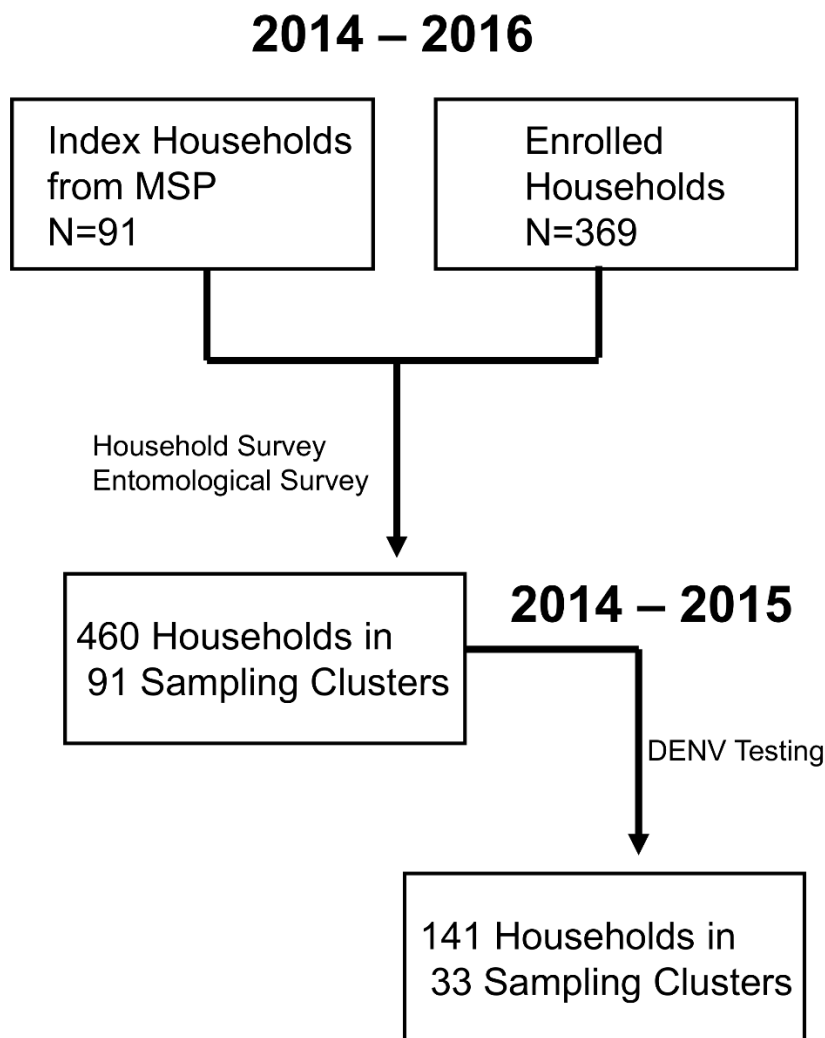
637

638

639

640

641



642

643 **Figure 2.** Diagram of household enrollment and data collection for cluster study design in
644 Machala, Ecuador.

645

646

647

648

649

650

651