



22 \*Correspondence to

23 Prof Yu-ming Chen

24 Guangdong Provincial Key Laboratory of Food, Nutrition and Health; Department of

25 Medical Statistics & Epidemiology, School of Public Health, Sun Yat-sen University,

26 Guangzhou, China. Email: [chenyum@mail.sysu.edu.cn](mailto:chenyum@mail.sysu.edu.cn)

27 And

28 Prof Ju-Sheng Zheng

29 Zhejiang Provincial Laboratory of Life Sciences and Biomedicine, Key Laboratory of

30 Growth Regulation and Translational Research of Zhejiang Province, School of Life

31 Sciences, Westlake University, 18 Shilongshan Rd, Cloud Town, Hangzhou, China. Tel: +86

32 (0)57186915303. Email: [zhengjusheng@westlake.edu.cn](mailto:zhengjusheng@westlake.edu.cn)

33 And

34 Prof Yan He

35 Microbiome Medicine Center, Division of Laboratory Medicine, Zhujiang Hospital, Southern

36 Medical University, Guangzhou, China. Email: [bioyanhe@gmail.com](mailto:bioyanhe@gmail.com)

37

38

39

40

41

42

43 **Abstract**

44 Several small studies suggested gut microbiome might influence osteoporosis, but rare  
45 metabolomics evidence from human study had explained the link. This study examined the  
46 association of gut microbiome dysbiosis with osteoporosis and explored the potential  
47 pathways by using fecal and serum metabolomics. We analyzed gut microbiota compositions  
48 by 16S rRNA profiling and bone density (BMD) using a dual-energy X-ray absorptiometry in  
49 1776 community-based adults. Targeted metabolomics in feces (15 categories) and serum (12  
50 categories) were further analyzed in 971 participants with ultra-performance liquid  
51 chromatography coupled to tandem mass spectrometry. This study showed osteoporosis was  
52 related to gut microbiota beta diversity, taxonomy and functional composition. The relative  
53 abundance of *Actinobacillus*, *Blautia*, *Oscillospira*, *Bacteroides* and *Phascolarctobacterium*  
54 was positively, while *Veillonellaceae other*, *Collinsella* and *Ruminococcaceae other* were  
55 inversely, associated with the presence of osteoporosis, which related to higher levels of  
56 peptidases and transcription machinery in microbial function. Fecal and serum metabolomics  
57 analyses suggested that the tyrosine metabolism and the tryptophan metabolism in feces and  
58 the valine, leucine and isoleucine degradation in serum were significantly linked to the  
59 identified microbiota biomarkers and osteoporosis. This large population-based study  
60 provided the robust evidence connecting gut dysbiosis, fecal and serum metabolomics with  
61 osteoporosis. Our results suggested that gut dysbiosis and amino acid metabolism could be  
62 potential targets for the intervention of osteoporosis.

63

## 64 **Introduction**

65 Osteoporosis causes more than 8.9 million fractures per year worldwide [1]. Around 8.8  
66 million adults are suffering from osteoporosis in the US in 2010 [2]. The pooled prevalence  
67 of osteoporosis over the age of 50 in 2015 is more than twice that identified in China in 2006  
68 (34.65% vs. 15.7%) [3]. Rapidly increases in prevalence of osteoporosis [3], incidence of hip  
69 fractures [4], and the aging population [5] suggest that more studies are needed in the  
70 preventive strategies of osteoporosis in China.

71 The number of microorganisms living in the gastrointestinal tract exceeds  $10^{13}$ , in which  
72 the ratio of bacterial cells to human cells is 1:1 [6]. Many animal studies examined the  
73 beneficial effects of some genera of gut microbiota on osteoporosis [7]. Probiotics might  
74 protect against bone loss by decreasing gut permeability, inflammatory responses through  
75 downregulating the osteoclastogenic cytokines TNF-alpha and RANKL and bone resorption  
76 in murine models [8]. But such a beneficial effect of probiotics (*Lactobacillus reuteri* 6475)  
77 was not detected on bone loss in older women in a randomized controlled trail [9]. The  
78 majority of current studies related to gut microbiota mainly focused on prebiotics [10] and  
79 probiotics [8, 11, 12, 13]. Considering the small proportion of probiotics in gut microbiota,  
80 more studies are needed to determine the association between the other gut microbiota and  
81 osteoporosis.

82 To date, only limited cross-sectional studies had reported the association between gut  
83 microbiota and bone density or osteoporosis and showed inconsistent results [14, 15, 16, 17].  
84 Higher proportions of *Blautia* and *Parabacteroides*, but lower proportion of

85 *Ruminococcaceae* UCG-002, were observed in 12 osteopenia/osteoporotic subjects than in 6  
86 normal controls in Xi'an China [14], while *Actinomycetes*, *Eggerthella*, *Clostridium XIVa*  
87 and *Lactobacilli* were more abundant in 61 osteoporotic patients than in the 60 normal group  
88 in Irish [15].

89 The gut microbiota or its metabolites can also induce bone remodeling, which may be  
90 mediated by elevated serum IGF-1 levels in mice [18]. Few studies explored the associations  
91 between microbial function [16, 19] or fecal metabolites [17] and bone health in human  
92 adults. It was found that low-BMD/osteopenia might be related to a wide range of potential  
93 pathways (e.g., LPS biosynthesis, Membrane transport) [16, 19], or fecal metabolites like N-  
94 acetylmannosamine, deoxyadenosine, and adenosine [17]. Due to greater between individual  
95 heterogeneity of gut microbiota [20] or metabolites [21] and limited study size (<181  
96 participants [14, 15, 16, 17, 19]) in the previous studies, the associations of gut microbiota,  
97 microbial function and fecal metabolites with osteoporosis remained largely unclear.

98 Considering few studies evidence of bone health-related bacteria biomarkers, great diversity  
99 among different population, and extreme complexity of gut microbiota in disease, each study  
100 might figure out only a small part of it. To the authors' knowledge, only few studies have  
101 briefly described the variation in the gut microbiota profile between osteoporosis groups with  
102 controls, and rare studies have yet examined association between gut microbiota-related  
103 serum metabolites, microbial metabolic pathway and osteoporosis in a human study, so the  
104 potential mechanism of variation in osteoporosis associated metabolome mediated by  
105 intestinal flora has not been fully studied. The present study was to examine the associations

106 of gut microbiota with the presence of osteoporosis in a middle-aged and elderly Chinese  
107 population. We firstly evaluated the association between the alpha- and beta-diversity,  
108 composition and function of gut microbiota with osteoporosis. Fecal and serum metabolomics  
109 analysis were then used to identify the potential biological pathways linking microbial  
110 functions to osteoporosis risk.

## 111 **Methods**

### 112 **Study participants**

113 The study was embedded in the Guangzhou Nutrition and Health Study (GNHS), a  
114 community-based prospective cohort aimed to investigate the nutritional determinants of  
115 cardiometabolic and body composition associated phenotypes. The criteria and recruitment  
116 procedures of participants for this cohort have been described in detail previously [22].  
117 Briefly, 4048 healthy participants between the age of 40 and 75 were enrolled in the baseline  
118 in Guangzhou, China, between 2008 and 2013. We excluded people with the treatment with  
119 antibiotics within 2 weeks before the fecal samples were collected; people with prevalent  
120 type 2 diabetes; people with the history of cancer. Finally, 1776 participants (580 men, 1196  
121 women) for the femoral neck, and 1774 of them (580 men, 1194 women) were included for  
122 the lumbar spine were included in this study. 1027 participants were diagnosed as osteopenia  
123 and 266 were diagnosed as osteoporosis at the femoral neck, while 582 participants were  
124 diagnosed as osteopenia and 179 as osteoporosis at the lumbar spine. Then 805 participants  
125 without the data of fecal and serum metabolomics were excluded in the analysis of  
126 metabolomics, and a total of 969 people had fecal metabolomics and lumbar spine BMD

127 examinations and a total of 971 people had fecal metabolomics and femoral neck BMD  
128 examinations. Since the Metabolite Sets Enrichment Analysis only suits for two-group data,  
129 the two extreme groups including control and osteoporosis group for lumbar spine (n = 647,  
130 102 diagnosed as osteoporosis) and femoral neck (n = 416, 151 diagnosed at osteoporosis)  
131 were selected to perform metabolite biomarker and pathway analysis for osteoporosis. BMD,  
132 covariates, gut microbiota, targeted fecal and serum metabolomics were examined for the  
133 participants. These were described only briefly below and in more detail in the  
134 Supplementary Methods. This study was approved by the Public Health Ethics Committee of  
135 Sun Yat-sen University and was based on the Helsinki Declaration. Written informed consent  
136 were received from all participants before the investigation.

### 137 **BMD and covariates measurement**

138 Lumbar spine (L1-L4) and femoral neck BMD ( $\text{g}/\text{cm}^2$ ) was measured using a dual energy X-  
139 ray absorptiometry (Discovery W; Hologic Inc., Waltham, MA, USA). Osteoporosis was  
140 defined as a T-score of less than -2.5 and osteopenia was defined as a T-score between -2.5  
141 and -1 based on a 30-year-old white female from the dual-energy X-ray absorptiometer  
142 manufacturer's reference database for the lumbar spine [23] and those of 20- to 29-year-old  
143 non-Hispanic white women from NHANES III for the femoral neck [24]. The height and  
144 weight of the participants were measured wearing light clothes and no shoes.  
145 Sociodemographic factors were collected through questionnaires in face-to-face interviews  
146 (Details refer to supplementary methods).

### 147 **Fecal DNA extraction and 16S gene amplicon sequencing**

148 According to the manufacturer's instructions, the QIAamp® DNA Stool Mini Kit (Qiagen,  
149 Hilden, Germany) was used to extract microbial DNA from each sample. The 16S rRNA gene  
150 amplification program was divided into two PCR steps. In the first PCR reaction, primers  
151 341F (CCTACGGGNGGCWGCAG) and 805R (GACTACHVGGGTATCTAATCC) were  
152 used to amplify the V3-V4 hypervariable region of the 16S rRNA gene from genomic  
153 DNA[25]. In the second PCR step, sequencing primers and adaptors were added to the  
154 amplicon product (Details refer to supplementary methods).

### 155 **Metabolome profiling of stool and serum samples**

156 Fecal and serum metabolites were analyzed using targeted metabolomics methods with ultra-  
157 high performance liquid chromatography-tandem mass spectrometry (UPLC-MS/MS) system  
158 (ACQUITY UPLC-Xevo TQ-S, Waters Corp., Milford, MA, USA). A total of 198 fecal  
159 metabolites including categories of amino acids, benzenoids, bile acids, carbohydrates,  
160 carnitines, cinnamic acids, fatty acids, indoles, nucleosides, organic acids, organooxygen  
161 compounds, peptidomimetics, phenylpropanoic acids, pyridines and pyrroles, and 196 serum  
162 metabolites including categories of amino acids, benzenoids, bile acids, carbohydrates,  
163 carnitines, fatty acids, indoles, nucleosides, organic acids, organooxygen compounds,  
164 phenylpropanoic acids and pyridines were quantified (Details refer to supplementary  
165 methods).

### 166 **Statistical analysis**

### 167 **The characteristics of participants**



168 Difference in population characteristics by BMD status and was examined by analysis of  
169 covariance (continuous variables in normal distribution) or Kruskal-Wallis (continuous  
170 variables in non-normal distribution) or chi-square test (categorical variables).

### 171 **Gut microbiota analysis**

172 Ordered logistic regression was used to compare alpha diversity including Shannon index,  
173 observed species and Chao 1 by using the polr function in R, correcting all other relevant  
174 variables including age, sex, BMI, physical activities and education level.

175 Principal coordinate analysis (PCoA) and permutation multivariate analysis of variance  
176 (PERMANOVA) based on Bray Curtis distance (R function Adonis {vegan}, 999  
177 permutations)[26], and compared the entire microbial composition (beta diversity: the  
178 difference between the microbial communities in one environment compared with another) at  
179 the OTU level from QIIME1 through participants with normal BMD, osteopenia and  
180 osteoporosis. PERMANOVA includes age, sex, physical activities, sequencing run and Bristol  
181 stool scale as covariates. The PERMANOVA analysis was repeated for genera level from  
182 QIIME1 [27] and QIIME2 [28] between different groups at the site of lumbar spine and femoral  
183 neck.

184 Linear discriminant effect size (LEfSe) analysis was used to identify microbiota in the genus  
185 level and functional modules that distinguish participants with normal BMD, osteopenia and  
186 osteoporosis and were specifically used to discover biomarkers [29]. The default parameters  
187 (alpha value is 0.05 and the LDA score is 2.0) were used. Multivariate linear regression was  
188 used to test the association between genera biomarkers with functional modules in the cross-

189 sectional study by adjusted for covariates including sequencing run, sequencing depth and  
190 Bristol stool scale [30].

## 191 **Fecal and serum metabolomics analysis**

192 Relationship between fecal and serum metabolites with osteoporosis prevalence was analyzed  
193 using MetaboAnalyst 4.0. Metabolites were auto-scaled and then subjected to metabolite sets  
194 enrichment analysis using all metabolites. Human Metabolite Database (HMDB) accession  
195 numbers were queried. Metabolite sets based on Kyoto Encyclopedia of Genes and Genomes  
196 (KEGG) were used for the analysis. Metabolites associated with the metabolite pathway with  
197 the largest fold enrichment were analyzed using an unpaired *t*-test with FDR correction for  
198 comparison between participants with normal BMD and osteoporosis, and then the Spearman  
199 correlation coefficients between the genera and the metabolites were calculated. Results  
200 displaying a P value < 0.05 after FDR adjustment were considered significant. Based on the  
201 significant spearman coefficients between gut microbiota and metabolite biomarkers, the ABO  
202 (*Actinobacillus* + *Blautia* + *Oscillospira*, relative abundance) and ABPVCR (*Actinobacillus* +  
203 *Bacteroides* + *Phascolarctobacterium* – *Veilloellaceae* other – *Collinsella* –  
204 *Ruminococcaceae* other, relative abundance) microbe scores were constructed for the fecal  
205 and serum metabolites set enrichment analysis, respectively (Details refer to supplementary  
206 methods).

## 207 **Results**

### 208 **Participants characteristics**

209 The population characteristics for each of the three groups (control [T score >-1], osteopenia  
210 [T score: -2.5– -1.0] and osteoporosis [T score ≤-2.5] [23, 24]) included in the cross-sectional  
211 study showed sex and BMD differed significantly. Participants with (vs. without)  
212 osteopenia/osteoporosis were more likely to be women (Table S1 and S2).

### 213 **Alpha- and beta-diversities of gut microbiota and osteoporosis**

214 We compared the alpha diversity (Chao1 index, observed species and Shannon index) and  
215 didn't find any significant differences ( $P > 0.05$ ) among the control, osteopenia and  
216 osteoporosis (Figure S1 A-F).

217 The PCoA analysis for beta diversity showed that microbiota community were different  
218 among the control, osteopenia and osteoporosis groups. Participants with osteoporosis at the  
219 lumbar spine or femoral neck had slightly lower levels of the first principal component factor  
220 (permutation test,  $p = 0.082$  and  $0.001$ , respectively; 999 permutations, Figure 2A-B and  
221 Table S3, S4), all adjusted for age, sex, BMI, physical activities, education and Bristol stool  
222 scale. We further investigated the stability. The Bray-Curtis beta diversities at OTU and genus  
223 levels (annotated using QIIME 1 [27] and QIIME 2 [28]) by PERMANOVA were tended to  
224 be different between various relevant osteoporosis groups ( $P$  range:  $0.001 - 0.131$ , Table S5,  
225 S6). The  $P$  values at the OTU level using QIIME 1 were  $0.026$  and  $0.001$  among normal and  
226 abnormal (osteopenia/osteoporosis) groups at the lumbar spine and femoral neck,  
227 respectively.

### 228 **Identification of genera biomarkers related to osteopenia/osteoporosis**

229 Linear discriminant analysis (LDA) was used to combined effect size measurement (LEfSe)  
230 to explore the differences of genera among the participants with normal BMD, osteopenia  
231 and osteoporosis. Higher enrichment of *Streptophyta Other* and *Phascolarctobacterium* were  
232 associated with the presence osteopenia/ osteoporosis for lumbar spine, while higher  
233 enrichment of *Actinobacillus*, *Blautia*, *Oscillospira*, *Eggerthella*, *Rikenellaceae Other*,  
234 *Phascolarctobacterium* and *Bacteroides* and lower enrichment of *Ruminococcaceae Other*,  
235 *Collinsella* and *Veillonellaceae Other* were associated with osteoporosis of the femoral neck  
236 (Figure 3A and Figure S2 A-I). The median (range) of the LDA score was 2.9 (2.4 - 4.1).

### 237 **Functional analysis results of microbiota linked with osteoporosis**

238 The microbiota of lumbar spine and femoral neck osteoporosis displayed increased  
239 peptidases and transcription machinery, respectively (LDA = 2.04 and 2.02 with LEfSe,  
240 Figure 2B and C). After adjustments for sequencing depth, sequencing run and Bristol stool  
241 scale [30], *Veillonellaceae other*, *Collinsella*, *Ruminococcaceae other*, *Blautia*, *Rikenellaceae*  
242 *other* and *Oscillospira* were inversely, while *Bacteroides*, *Phascolarctobacterium* and  
243 *Actinobacillus* were positively, associated with the level of transcription machinery.  
244 *Phascolarctobacterium* was positively associated with peptidases adjusted for the above  
245 covariates (FDR-corrected  $P < 0.05$ ) (Figure 3D).

### 246 **The relationship between fecal and serum metabolites with osteoporosis**

247 Among the studied metabolites (amino acids, benzenoids, bile acids, carbohydrates,  
248 carnitines, cinnamic acids, fatty acids, hybrid peptides, indoles, nucleosides, organic acids,  
249 organooxygen compounds, peptidomimetics, phenylpropanoic acids, pyridines and pyrroles)

250 in feces and serum, metabolite sets enrichment analyses for osteoporosis status showed that  
251 most of the metabolites and pathway were amino acids and their related pathways (Figure 4).  
252 Fecal metabolite sets enrichment revealed that the pathways with the largest fold enrichment  
253 were ubiquinone, other terpenoid-quinone biosynthesis and tyrosine metabolism for the  
254 lumbar spine osteoporosis status, and tryptophan metabolism for the femoral neck  
255 osteoporosis status. The corresponding pathway in serum metabolite sets was valine, leucine  
256 and isoleucine degradation for osteoporosis status at both the lumbar spine and femoral neck  
257 (all FDR < 0.05, Figure 4C and D, Table S9-12).

258 The specific metabolites that contributed to the pathways mentioned above for  
259 osteoporosis status were further identified. The enrichment score of the pathways including  
260 ubiquinone and other terpenoid-quinone biosynthesis (I), tyrosine metabolism (II), tryptophan  
261 metabolism and valine (III), leucine and isoleucine degradation (IV) were respectively  
262 developed based on increased concentration of fecal tyrosine (I, II) and tryptophan (III) and  
263 decreased concentration of serum valine and leucine (IV) associated with osteoporosis  
264 (Figure 4E, Table S13).

### 265 **The association between gut microbiota with fecal and serum metabolites**

266 Heatmap was used to describe the relationship between metabolites in feces and serum and  
267 osteoporosis-related genera biomarkers developed in the LEfSe (Figure 5A). The results  
268 showed that fecal L-tyrosine and L-tryptophan were positively correlated to the abundance of  
269 Genus *Bacteroides*, *Actinobacillus* and *Phascolarctobacterium*, while inversely associated  
270 with the abundance of genus Veillonellaceae other, Collinsella, Rikenellaceae other and

271 Ruminococcaceae other. As for serum metabolites, L-valine were inversely correlated to the  
272 abundance of genus *Oscillospira*, *Blautia*, and *Actinobacillus*, while L-leucine was inversely  
273 associated with the last two genera.

274 We established ABO and ABPVCR microbe scores based on above mentioned the  
275 osteoporosis-related genera. The microbe scores were then used to identify related metabolite  
276 pathways in feces and serum. In the pathways related ABO microbe score in the fecal  
277 metabolite sets enrichment analysis, we replicated the osteoporosis associated fecal pathways  
278 (e.g., tyrosine metabolism and tryptophan) as identified above in (Figure 5B and Table S14),  
279 although the top pathway was arginine biosynthesis (all FDR < 0.05). The enrichment of  
280 serum metabolites associated with ABPVCR microbe score indicated that the top pathway  
281 was phenylalanine metabolism and replicated osteoporosis-related serum metabolite sets  
282 (valine, leucine and isoleucine degradation) (all FDR < 0.05) (Figure 5C and Table S15).

## 283 **Discussion**

284 This study showed that osteoporosis was associated with microbiome beta diversity,  
285 taxonomic and functional composition. A few osteoporosis-related bacteria biomarkers were  
286 identified. The findings showed that *Actinobacillus*, *Blautia*, *Oscillospira*, *Bacteroides* and  
287 *Phascolarctobacterium* was positively, while *Veillonellaceae other*, *Collinsella* and  
288 *Ruminococcaceae other* were inversely, related to the presence of osteoporosis that are  
289 correlated to higher relative abundance of peptidases and transcription machinery in microbe  
290 function. The fecal and serum metabolomics analysis suggested that tyrosine and tryptophan  
291 metabolism in feces, and valine, leucine and isoleucine degradation in blood might link the

292 identified microbiota biomarkers and osteoporosis. Our findings are robust due to its large  
293 study size and provided explanatory functional pathways of microbiota, fecal and serum  
294 metabolites.

### 295 **Association between gut microbiota and osteoporosis**

296 Several small studies preliminarily examined the associations between gut microbiota with  
297 osteoporosis [14, 15]. Two small cross-sectional studies showed higher abundance of *Blautia*  
298 and *Parabacteroides* in 18 Chinese adults in Xi'an [14], *Actinomycetes*, *Eggerthella*,  
299 *Clostridium XIVa* and *Lactobacilli* in 181 adults in Ireland [15], but lower proportion of  
300 *Ruminococcaceae UCG-002* in 18 Chinese adults [14], might be associated with greater risk  
301 of osteopenia/osteoporosis. This study showed higher risk of osteopenia/osteoporosis was  
302 associated with greater abundance of *Phascolarctobacterium*, *Actinobacillus*, *Blautia*,  
303 *Oscillospira*, and *Bacteroides*, but lower enrichment of *Ruminococcaceae other*, *Collinsella*  
304 and *Veillonellaceae other*. To the authors' knowledge, this is the largest population-based  
305 study examined the associations of bacteria biomarkers and bone health in adults. The results  
306 provided robust evidence for the gut microbiota-bone associations in human adults.  
307 Similar results for two bacteria biomarkers (*Actinobacillus* and *Ruminococcaceae*) were  
308 observed in this study to previous findings [14, 15]. A few novel bacteria biomarkers were  
309 found in this study than those in previous studies possibly due to much greater study size in  
310 this study. Some reasons might partly explain the between-study heterogeneity in the bacteria  
311 biomarkers: differences in race and ethnicity [31], social [32] and geographic [31, 33]  
312 environments, lifestyle factors [33], personal behaviors [34] and random errors due to greater

313 between-individual differences [35]. Given limited evidence of bone health-related bacteria  
314 biomarkers, great between-population heterogeneity, and the complexity of microbiome in  
315 diseases, larger prospective or interventional studies are needed to address this issue.

### 316 **Gut microbiota-related pathways in osteoporosis**

317 In the above results regarding the microbial functions, we explored the pathways in  
318 metabolomics. All the above results indicated that gut microbiota might be associated with  
319 osteoporosis by regulating amino acid metabolism. No other significant association for the  
320 metabolites of benzenoids, bile acids, carbohydrates, carnitines, cinnamic acids, fatty acids,  
321 indoles, nucleosides, organic acids, organooxygen compounds, peptidomimetics,  
322 phenylpropanoic acids, pyridines and pyrroles involved in the top pathways were found in  
323 this study.

324 The analyses of functional pathways of gut microbiota showed lumbar spine osteoporosis  
325 might be related to higher levels of bacterial pathways of peptidases in this population. The  
326 fecal metabolite analysis gave further evidence of higher peptidases, in which higher fecal  
327 levels of tyrosine and tyrosine metabolism were associated with increased risk of  
328 osteoporosis. The observations were in line with some previous findings. Along the  
329 gastrointestinal tract, alimentary and endogenous proteins are hydrolyzed into peptides and  
330 amino acids by host- and bacteria- derived proteases and peptidases [36]. Peptidases pathway  
331 can be driven by diets rich in protein with low vegetables or minerals over time, which will  
332 cause a latent acidosis of the extracellular matrix and result in calcium resorption from the  
333 bones [37]. Strong positive associations have been observed between rates of hip fracture in



334 women and indexes of dietary animal protein intake [38, 39]. Bacteria can use peptidases to  
335 hydrolyze proteins in the small intestine, thereby producing free amino acids including  
336 tyrosine [40]. Tyrosine metabolism can produce succinate, which may increase bone loss by  
337 binding to specific receptors on osteoclast lineage cells and stimulating osteoclasts  
338 discovered *in vitro* and *in vivo* [41].

339 Our study also identified that the transcription machinery showed a consistently positive  
340 association with femoral neck osteoporosis and some genera biomarkers, and fecal  
341 metabolomics analyses suggested the tryptophan metabolism was associated with femoral  
342 neck osteoporosis. The transcription machinery is that the components, corresponding  
343 proteins, assemble to form the transcriptionally competent preinitiation complex, which is  
344 involved in the initiated gene transcription [42]. Functional predictions in another study  
345 showed a significant increase in the abundance of transcription factors in the control group  
346 compared to the low femoral neck BMD group [16]. A study found that gut microbe like  
347 *Lactobacillus reuteri* can metabolize tryptophan into indole-3-lactic acid, thereby activating  
348 the aryl hydrocarbon receptor, and reprogramming CD4 + T cells into double positive  
349 (CD4+CD8+) intraepithelial T lymphocytes (DP IELs) by downregulating the transcription  
350 factor ThPOK, and tryptophan in germ-free mice can only induce OP IELs in a bacteria-  
351 dependent manner [43]. Growing evidence highlights the ability of microorganisms to  
352 produce biologically active compounds that affect the transcriptional machinery of host cells  
353 [44], influencing the functionality of epigenetic mechanisms involved in the regulation of  
354 bone metabolism, which may contribute to the development of osteoporosis [45].

355 Endogenous intestinal metabolites might affect the epigenetic mechanisms in brain cells,  
356 leading to differential neuronal expression, which might lead to changes in host behavior.  
357 Many studies on animal models of anxiety and depression showed that there is a correlation  
358 between the microbiota and mental illness through epigenetic mechanisms [46, 47].

359 Our study found that the serum valine and leucine were inversely associated with  
360 *Actinobacillus*, *Blautia*, *Oscillospira* and osteoporosis prevalence probably through serum  
361 valine, leucine and isoleucine degradation. As supporting evidence, it has been detected that  
362 L-leucine and L-valine in plasma were significantly associated with gut microbiota [48] and  
363 intake of leucine was strongly associated with higher BMD of the spine and forearms [49].  
364 Valine, leucine and isoleucine belong to 9 essential amino acids and must be present in  
365 sufficient amounts to supplement muscle protein [50].

### 366 **Strengths and limitations**

367 To our knowledge, this study was the largest study assessing the associations between gut  
368 microbiota with osteoporosis from different views including microbial diversities,  
369 compositions and functions. Some novel genera were found to be associated with  
370 osteoporosis. The observed microbiota-bone associations were further validated by the  
371 analyses of fecal and serum metabolites and the metabolite pathways and the associated  
372 pathways identified in this study can help explain the microbiota-bone associations. We have  
373 excluded subjects with factors possibly influencing the gut microbiota composition, such as  
374 use of antibiotics and the presence of diabetes and cancers.

375 There are still several limitations in our study. First, the study only comprised of Chinese  
376 ethnicity. It's needed to be cautious to generalize the results to other ethnicity or regions due  
377 to the differences in genetic and environmental backgrounds that may mask or change the  
378 associations [51].Second, the potential pathways identified from the fecal and serum  
379 metabolomics are needed to be confirmed in animal or in vitro studies. Third, we could not  
380 rule out all participants with either one disease that affect gut microbiota or bone health  
381 because disease-free people are not common in the elderly population.

## 382 **Conclusion**

383 The present study presented an integrated analysis of the relationship between the gut  
384 microbiome, fecal and serum metabolomics with osteoporosis. Our findings showed that beta  
385 diversity, taxonomic and functional composition of gut microbiota were associated with the  
386 presence of osteoporosis. The gut microbiota-osteoporosis association might be explained by  
387 altered amino acid metabolism as determined by metabolomics analysis. The findings may  
388 contribute to the development of preventive or therapeutic strategies aimed at modulating the  
389 microbiome and amino acid metabolism to reduce the burden of osteoporosis.

390

391

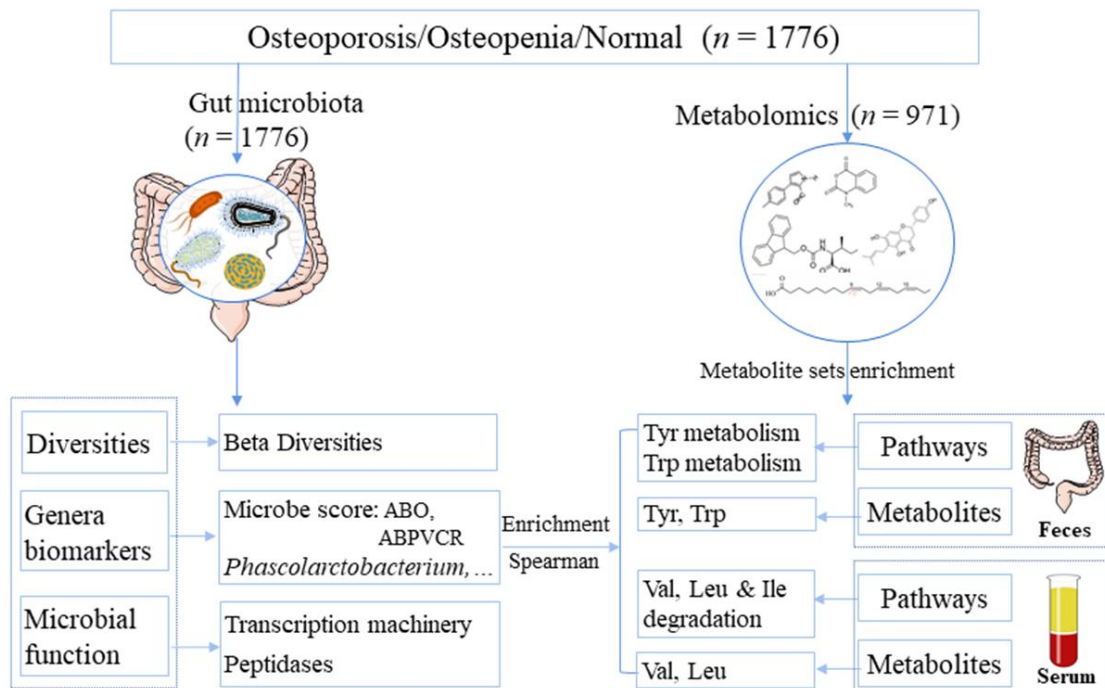
## 392 **References**

- 393 1 Johnell O, Kanis JA. An estimate of the worldwide prevalence and disability associated  
394 with osteoporotic fractures. *Osteoporos Int* 2006;**17**:1726-33.
- 395 2 Wright NC, Looker AC, Saag KG, Curtis JR, Delzell ES, Randall S, *et al*. The recent  
396 prevalence of osteoporosis and low bone mass in the United States based on bone mineral  
397 density at the femoral neck or lumbar spine. *Journal of bone and mineral research : the official*  
398 *journal of the American Society for Bone and Mineral Research* 2014;**29**:2520-6.
- 399 3 Chen P, Li Z, Hu Y. Prevalence of osteoporosis in China: a meta-analysis and systematic  
400 review. *BMC Public Health* 2016;**16**:1039.
- 401 4 Xia WB, He SL, Xu L, Liu AM, Jiang Y, Li M, *et al*. Rapidly increasing rates of hip fracture

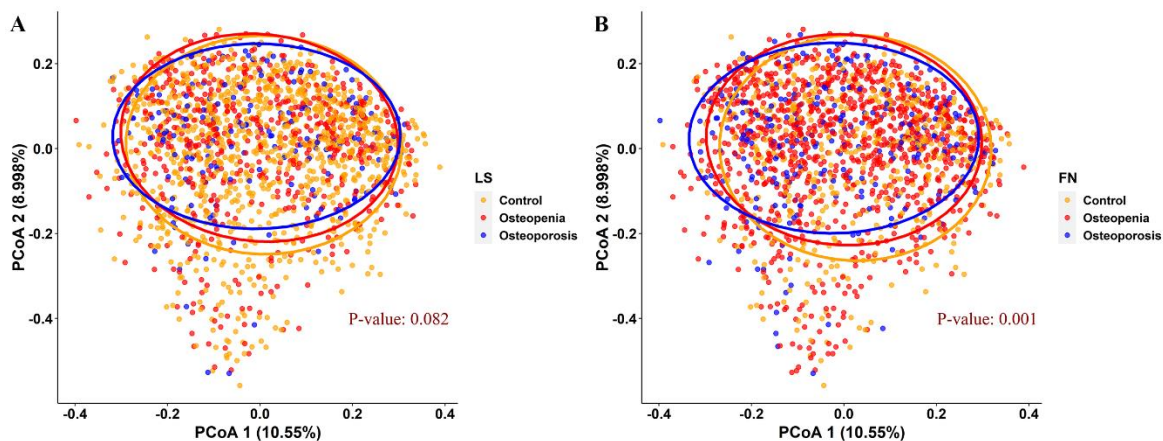
- 402 in Beijing, China. *J Bone Miner Res* 2012;**27**:125-9.
- 403 5 Sozen T, Ozisik L, Basaran NC. An overview and management of osteoporosis. *Eur J*  
404 *Rheumatol* 2017;**4**:46-56.
- 405 6 Sender R, Fuchs S, Milo R. Are We Really Vastly Outnumbered? Revisiting the Ratio of  
406 Bacterial to Host Cells in Humans. *Cell* 2016;**164**:337-40.
- 407 7 Pacifici R. Bone Remodeling and the Microbiome. *Cold Spring Harb Perspect Med*  
408 2018;**8**:1-19.
- 409 8 Li JY, Chassaing B, Tyagi AM, Vaccaro C, Luo T, Adams J, *et al.* Sex steroid deficiency-  
410 associated bone loss is microbiota dependent and prevented by probiotics. *J Clin Invest*  
411 2016;**126**:2049-63.
- 412 9 Nilsson AG, Sundh D, Bäckhed F, Lorentzon M. *Lactobacillus reuteri* reduces bone loss  
413 in older women with low bone mineral density: a randomized, placebo-controlled, double-blind,  
414 clinical trial. *J Intern Med* 2018;**284**:307-17.
- 415 10 Corrie Whisner CMW. Probiotics and Prebiotics in Food, Nutrition and Health:  
416 Interactions of probiotics and prebiotics with minerals: CRC Press 2013.
- 417 11 Britton RA, Irwin R, Quach D, Schaefer L, Zhang J, Lee T, *et al.* Probiotic *L. reuteri*  
418 treatment prevents bone loss in a menopausal ovariectomized mouse model. *J Cell Physiol*  
419 2014;**229**:1822-30.
- 420 12 Parvaneh K, Ebrahimi M, Sabran MR, Karimi G, Hwei AN, Abdul-Majeed S, *et al.*  
421 Probiotics (*Bifidobacterium longum*) Increase Bone Mass Density and Upregulate Sparc and  
422 Bmp-2 Genes in Rats with Bone Loss Resulting from Ovariectomy. *Biomed Res Int*  
423 2015;**2015**:897639.
- 424 13 Chiang SS, Pan TM. Antiosteoporotic effects of *Lactobacillus* -fermented soy skim milk  
425 on bone mineral density and the microstructure of femoral bone in ovariectomized mice. *J*  
426 *Agric Food Chem* 2011;**59**:7734-42.
- 427 14 Wang J, Wang Y, Gao W, Wang B, Zhao H, Zeng Y, *et al.* Diversity analysis of gut  
428 microbiota in osteoporosis and osteopenia patients. *PeerJ* 2017;**5**:e3450.
- 429 15 Das M, Cronin O, Keohane DM, Cormac EM, Nugent H, Nugent M, *et al.* Gut microbiota  
430 alterations associated with reduced bone mineral density in older adults. *Rheumatology*  
431 2019;**58**:2295-304.
- 432 16 Li C, Huang Q, Yang R, Dai Y, Zeng Y, Tao L, *et al.* Gut microbiota composition and bone  
433 mineral loss-epidemiologic evidence from individuals in Wuhan, China. *Osteoporos Int*  
434 2019;**30**:1003-13.
- 435 17 He J, Xu S, Zhang B, Xiao C, Chen Z, Si F, *et al.* Gut microbiota and metabolite alterations  
436 associated with reduced bone mineral density or bone metabolic indexes in postmenopausal  
437 osteoporosis. *Aging (Albany NY)* 2020;**12**:8583-604.
- 438 18 Yan J, Herzog JW, Tsang K, Brennan CA, Bower MA, Garrett WS, *et al.* Gut microbiota  
439 induce IGF-1 and promote bone formation and growth. *Proceedings of the National Academy*  
440 *of Sciences* 2016;**113**:E7554-E63.
- 441 19 Xu Z, Xie Z, Sun J, Huang S, Chen Y, Li C, *et al.* Gut Microbiome Reveals Specific  
442 Dysbiosis in Primary Osteoporosis. *Frontiers in Cellular and Infection Microbiology* 2020;**10**.
- 443 20 He Y, Wu W, Zheng HM, Li P, McDonald D, Sheng HF, *et al.* Regional variation limits

- 444 applications of healthy gut microbiome reference ranges and disease models. *Nat Med*  
445 2018;**24**:1532-5.
- 446 21 Zierer J, Jackson MA, Kastenmüller G, Mangino M, Long T, Telenti A, *et al.* The fecal  
447 metabolome as a functional readout of the gut microbiome. *Nat Genet* 2018;**50**:790-5.
- 448 22 Zhang ZQ, He LP, Liu YH, Liu J, Su YX, Chen YM. Association between dietary intake  
449 of flavonoid and bone mineral density in middle aged and elderly Chinese women and men.  
450 *Osteoporos Int* 2014;**25**:2417-25.
- 451 23 Looker AC, Melton LJR, Borrud LG, Shepherd JA. Lumbar spine bone mineral density in  
452 US adults: demographic patterns and relationship with femur neck skeletal status. *Osteoporos*  
453 *Int* 2012;**23**:1351-60.
- 454 24 Kanis JA, McCloskey EV, Johansson H, Oden A, Melton LJR, Khaltsev N. A reference  
455 standard for the description of osteoporosis. *Bone* 2008;**42**:467-75.
- 456 25 Klindworth A, Pruesse E, Schweer T, Peplies J, Quast C, Horn M, *et al.* Evaluation of  
457 general 16S ribosomal RNA gene PCR primers for classical and next-generation sequencing-  
458 based diversity studies. *Nucleic Acids Res* 2013;**41**:e1.
- 459 26 Oksanen J BF, Kindt R, *et al.* Package “vegan” Title Community Ecology Package. 2013.
- 460 27 Caporaso JG, Kuczynski J, Stombaugh J, Bittinger K, Bushman FD, Costello EK, *et al.*  
461 QIIME allows analysis of high-throughput community sequencing data. *Nature methods*  
462 2010;**7**:335-6.
- 463 28 Bolyen E, Rideout JR, Dillon MR, Bokulich NA, Abnet CC, Al-Ghalith GA, *et al.*  
464 Reproducible, interactive, scalable and extensible microbiome data science using QIIME 2.  
465 *Nat Biotechnol* 2019;**37**:852-7.
- 466 29 Segata N, Izard J, Waldron L, Gevers D, Miropolsky L, Garrett WS, *et al.* Metagenomic  
467 biomarker discovery and explanation. *Genome Biol* 2011;**12**:R60.
- 468 30 Lewis SJ, Heaton KW. Stool form scale as a useful guide to intestinal transit time. *Scand*  
469 *J Gastroenterol* 1997;**32**:920-4.
- 470 31 Gupta VK, Paul S, Dutta C. Geography, Ethnicity or Subsistence-Specific Variations in  
471 Human Microbiome Composition and Diversity. *Front Microbiol* 2017;**8**.
- 472 32 Dill-McFarland KA, Tang Z-Z, Kemis JH, Kerby RL, Chen G, Palloni A, *et al.* Close social  
473 relationships correlate with human gut microbiota composition. *Scientific Reports* 2019;**9**:703.
- 474 33 Shin J-H, Sim M, Lee J-Y, Shin D-M. Lifestyle and geographic insights into the distinct  
475 gut microbiota in elderly women from two different geographic locations. *J Physiol Anthropol*  
476 2016;**35**:31-.
- 477 34 Davidson GL, Cooke AC, Johnson CN, Quinn JL. The gut microbiome as a driver of  
478 individual variation in cognition and functional behaviour. *Philosophical Transactions of the*  
479 *Royal Society B: Biological Sciences* 2018;**373**:20170286.
- 480 35 Ursell LK, Clemente JC, Rideout JR, Gevers D, Caporaso JG, Knight R. The interpersonal  
481 and intrapersonal diversity of human-associated microbiota in key body sites. *J Allergy Clin*  
482 *Immunol* 2012;**129**:1204-8.
- 483 36 Macfarlane GT, Allison C, Gibson SA, Cummings JH. Contribution of the microflora to  
484 proteolysis in the human large intestine. *J Appl Bacteriol* 1988;**64**:37-46.
- 485 37 Bushinsky DA, Frick KK. The effects of acid on bone. *Curr Opin Nephrol Hypertens*

- 486 2000;**9**:369-79.
- 487 38 Abelow BJ, Holford TR, Insogna KL. Cross-cultural association between dietary animal  
488 protein and hip fracture: a hypothesis. *Calcif Tissue Int* 1992;**50**:14-8.
- 489 39 Frassetto LA, Todd KM, Morris RC, Jr., Sebastian A. Worldwide incidence of hip fracture  
490 in elderly women: relation to consumption of animal and vegetable foods. *J Gerontol A Biol*  
491 *Sci Med Sci* 2000;**55**:M585-92.
- 492 40 Diether NE, Willing BP. Microbial Fermentation of Dietary Protein: An Important Factor  
493 in Diet-Microbe-Host Interaction. *Microorganisms* 2019;**7**:19.
- 494 41 Guo Y, Xie C, Li X, Yang J, Yu T, Zhang R, *et al.* Succinate and its G-protein-coupled  
495 receptor stimulates osteoclastogenesis. *Nature Communications* 2017;**8**:15621.
- 496 42 Karin M. *Gene Expression*, 1993.
- 497 43 Cervantes-Barragan L, Chai JN, Tianero MD, Di Luccia B, Ahern PP, Merriman J, *et al.*  
498 *Lactobacillus reuteri* induces gut intraepithelial CD4(+)CD8 $\alpha$ (+) T cells. *Science*  
499 2017;**357**:806-10.
- 500 44 Qin Y, Wade PA. Crosstalk between the microbiome and epigenome: messages from bugs.  
501 *J Biochem* 2018;**163**:105-12.
- 502 45 Marini F, Cianferotti L, Brandi ML. Epigenetic Mechanisms in Bone Biology and  
503 Osteoporosis: Can They Drive Therapeutic Choices? *Int J Mol Sci* 2016;**17**:1329-48.
- 504 46 Bourassa MW, Alim I, Bultman SJ, Ratan RR. Butyrate, neuroepigenetics and the gut  
505 microbiome: Can a high fiber diet improve brain health? *Neurosci Lett* 2016;**625**:56-63.
- 506 47 Stilling RM, Dinan TG, Cryan JF. Microbial genes, brain & behaviour – epigenetic  
507 regulation of the gut–brain axis. *Genes, Brain and Behavior* 2014;**13**:69-86.
- 508 48 Wu W, Zhang L, Xia B, Tang S, Liu L, Xie J, *et al.* Bioregional Alterations in Gut  
509 Microbiome Contribute to the Plasma Metabolomic Changes in Pigs Fed with Inulin.  
510 *Microorganisms* 2020;**8**:111.
- 511 49 Jennings A, MacGregor A, Spector T, Cassidy A. Amino Acid Intakes Are Associated With  
512 Bone Mineral Density and Prevalence of Low Bone Mass in Women: Evidence From  
513 Discordant Monozygotic Twins. *Journal of bone and mineral research : the official journal of*  
514 *the American Society for Bone and Mineral Research* 2016;**31**:326-35.
- 515 50 Zhang ZY, Monleon D, Verhamme P, Staessen JA. Branched-Chain Amino Acids as  
516 Critical Switches in Health and Disease. *Hypertension* 2018;**72**:1012-22.
- 517 51 He Y, Wu W, Zheng HM, Li P, McDonald D, Sheng HF, *et al.* Regional variation limits  
518 applications of healthy gut microbiome reference ranges and disease models. *Nat Med*  
519 2018;**24**:1532-+.
- 520

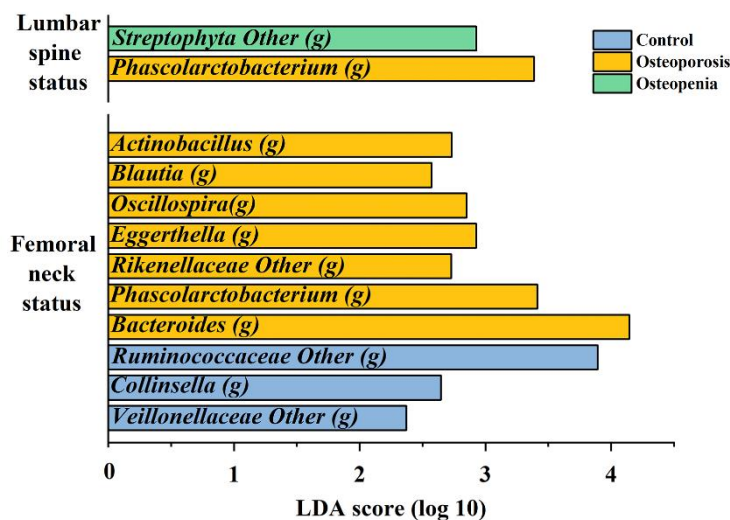


521  
 522 **Figure 1:** Diagram of study design and main findings.  
 523  
 524  
 525  
 526  
 527  
 528

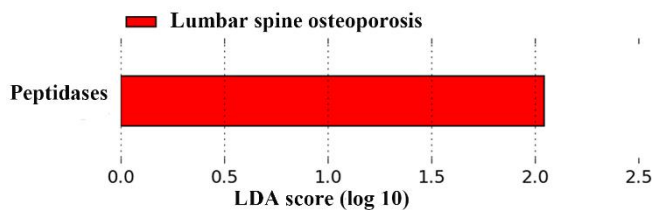


529  
 530 **Figure 2:** Heterogeneity in taxonomic profiles of osteoporosis groups, measured by Bray-  
 531 Curtis dissimilarity of relative abundances of OTU groups. (A) and (B): Associations between  
 532 lumbar spine and femoral neck osteoporosis with beta diversity. All adjusted for age, sex, BMI,  
 533 physical activity, education and Bristol stool scale. The  $p$  values were derived from  
 534 permutational multivariate analysis of variance (PERMANOVA). LS: lumbar spine; FN:  
 535 femoral neck.

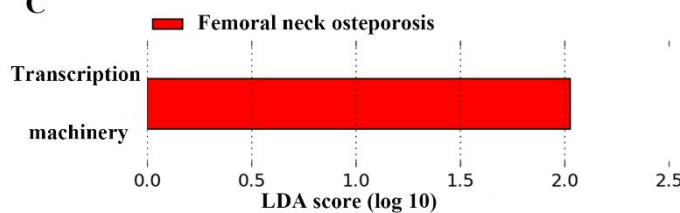
A



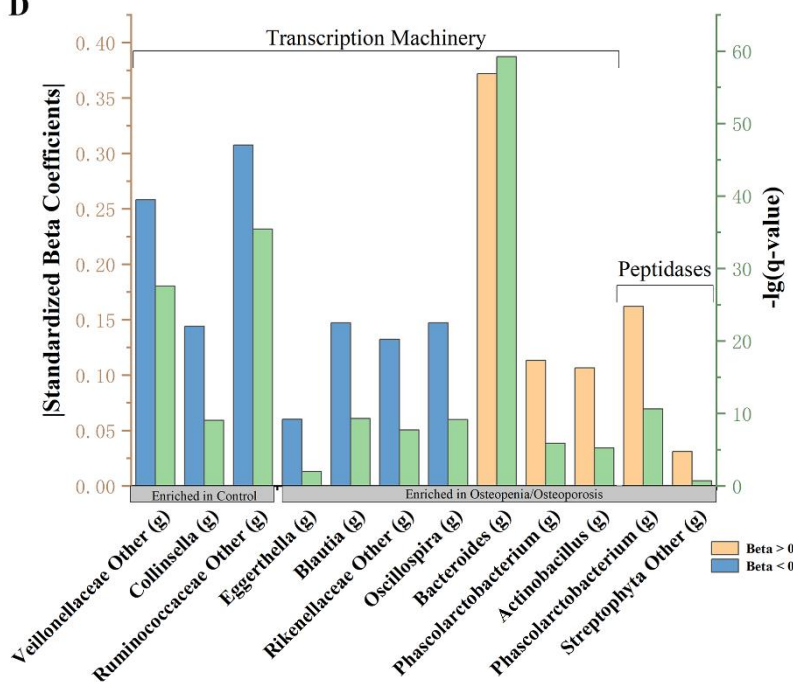
B



C

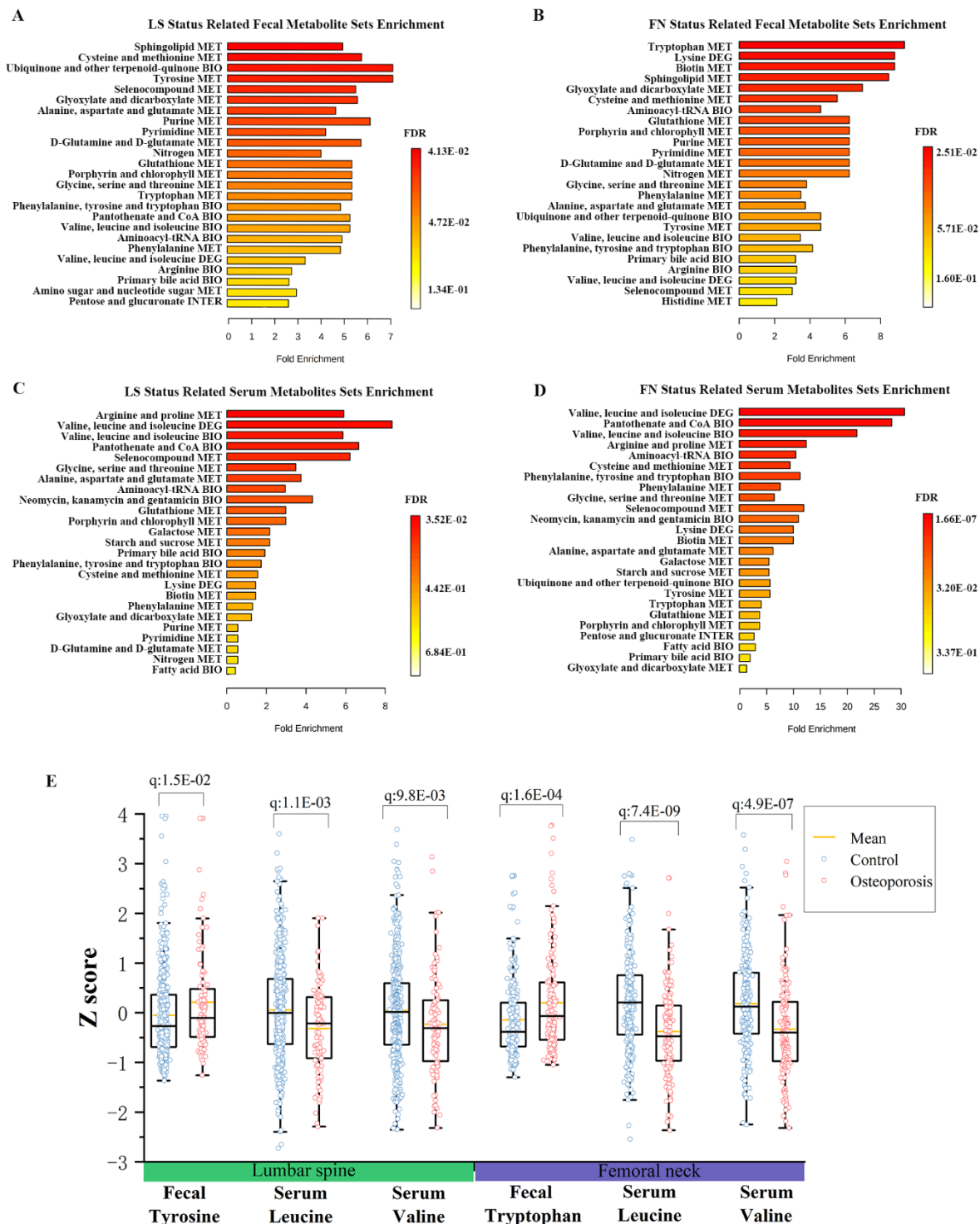


D





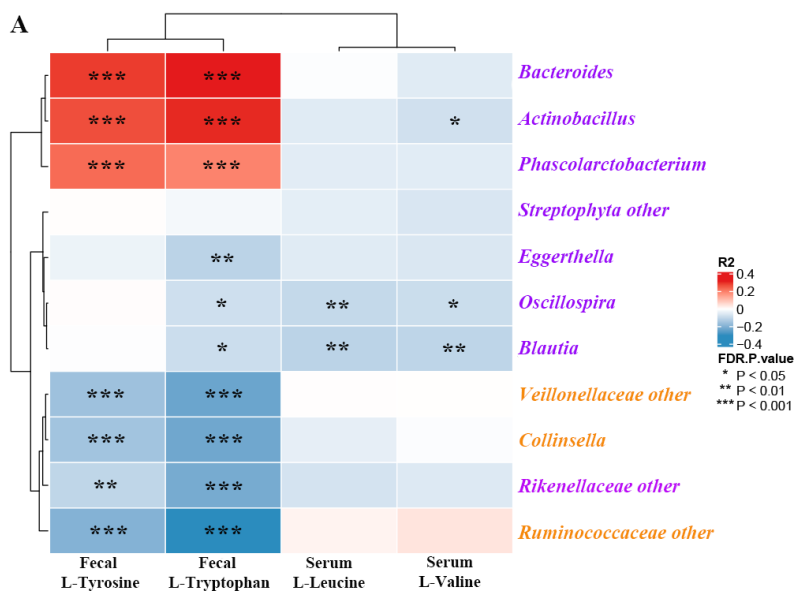
537 **Figure 3:** Characterisation of osteoporosis microbiota and its correlation with functional  
538 modules enriched in patients with osteoporosis. (A) LEfSe bar for gut microbiota biomarkers  
539 at lumbar spine and femoral neck status. Colors represents groups in which genera were  
540 enriched (blue: control; yellow: osteoporosis; green: osteopenia). LDA value  $>2$ . (B) and (C)  
541 Enriched pathways in lumbar spine and femoral neck osteoporosis. LEfSe indicating  
542 differences in the microbial pathways. LDA value  $> 2$ . D. Correlation of the relative abundance  
543 of osteoporosis/osteopenia-enriched and normal control-enriched microbiota with microbial  
544 functions. The histogram shows the linear regression coefficients between functional modules  
545 and microbiota biomarkers. Blue bars: beta coefficients  $> 0$ ; yellow bars: beta coefficients  $< 0$ ;  
546 green bars:  $-\lg(q\text{-value})$ .  
547



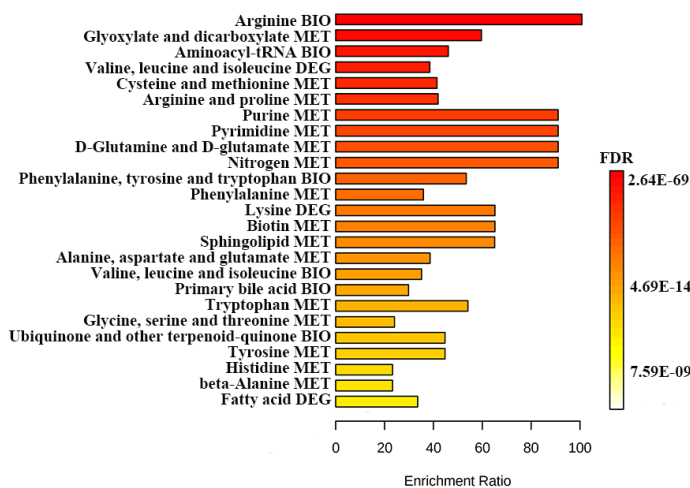
548

549 **Figure 4:** Fecal and serum metabolite set enrichment analysis reveals metabolite pathways  
 550 associated with osteoporosis. (A and B) Fecal metabolite pathways associated with LS and FN  
 551 osteoporosis. (C and D) Serum metabolite pathways associated with LS and FN osteoporosis.  
 552 For clarity of presentation, only the top 25 enriched metabolites sets are shown. E. The boxplot  
 553 shows the metabolites with significantly different concentration between groups and hits the

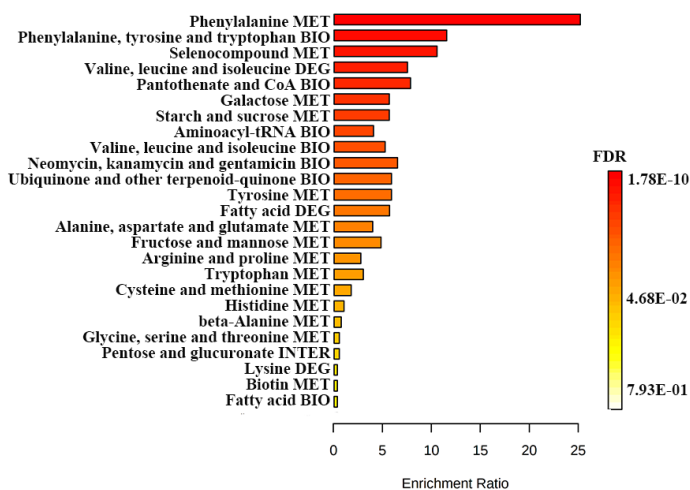
554 metabolite sets with the largest fold enrichment. The boxes represent the quartile between the  
555 first and third quartiles and the median (internal line). Whiskers indicate the lowest and highest  
556 values within 1.5 times the range of the first and fourth quartiles, respectively, and yellow line  
557 indicate the mean. LS: lumbar spine; FN: femoral neck; MET: metabolism; BIO: biosynthesis;  
558 DEG: degradation; INTER: interconversion.  
559



**B** ABO Microbe Score Related Fecal Metabolite Sets Enrichment



**C** ABPVC Microbe Score Related Serum Metabolite Sets Enrichment



561 **Figure 5:** The correlation between osteoporosis-related microbes and osteoporosis-related  
562 metabolites and the significant microbes associated metabolite sets enrichment. (A) Heat map  
563 of the Spearman correlation coefficients between osteoporosis-related microbes and  
564 osteoporosis-related metabolites. The intensity of the colors represents the degree of  
565 association. All significant correlations are marked with asterisk (\*FDR  $P < 0.05$ , \*\*FDR  $P <$   
566  $0.01$ , \*\*\*FDR  $P < 0.001$ ). (B and C) Fecal and serum metabolite set enrichment analysis  
567 revealed the metabolic pathways associated with ABO and ABPVCR microbe score (top 25  
568 pathways). ABO microbe score: *Actinobacillus* + *Blautia* + *Oscillospira* relative abundance;  
569 ABPVCR microbe score: *Actinobacillus* + *Bacteroides* + *Phascolarctobacterium* -  
570 *Veillonellaceae other* - *Collinsella* - *Ruminococcaceae other* relative abundance; MET:  
571 metabolism; BIO: biosynthesis; DEG: degradation; INTER: interconversion; Purple text:  
572 positive associations with osteoporosis; Orange text: inverse associations with osteoporosis.  
573