

1 **The use of a new type of heart rate-controlled training**
2 **system "HeartGo ®" for patients with chronic Heart**
3 **failure on the pedelec.**

4 Erik B. Friedrich², Herbert Löllgen³, Helmut Röder⁴, Wolfgang Baltes⁵,
5 Oliver Adam⁶, Martin Schlickel⁷, Günter Hennersdorf¹

7 **Corresponding author:**

8 **¹Prof. Dr. med. Günter Hennersdorf**

9 **Traubenweg 2 66359 Bous**

10 **06834 922113**

12 **Author's Adresses:**

13 ²Privatdozent Dr. med. Erik B. **Friedrich**,

14 Gemeinschaftspraxis St. Annenstr. 10A, 66606 St. Wendel

15 ³Prof. Dr. med. Herbert **Löllgen**,

16 Praxis für Sportkardiologie, Bermesgasse 32b, 42897 Remscheid

17 ⁴Helmut **Röder**,

18 Zum Stausee 60 66679 Losheim am See

19 ⁵Wolfgang **Baltes**,

20 Franzstr. 14 66287 Quierschied

21 ⁶Privatdozent Dr. med. Oliver **Adam**,

22 Kreiskrankenhaus St.Ingbert, Klaus-Tussingstr. 1

23 ⁷Dr. med. Martin **Schlickel**,

24 Im Wittum 7 66709 Weiskirchen

25
26
27
28
29
30 NOTE: This preprint reports new research that has not been certified by peer review and should not be used to guide clinical practice.

31

32 **Summary:**

33 **Background:**

34 The study "HI-Herz.BIKE Saar" (August 2017 - September 2019) examined the
35 health benefits and training effect of e-bikes (pedelecs) in patients from
36 ambulatory heart groups with moderate chronic heart failure (CHI).

37

38 **Method:**

39 10 subjects with NYHA stage II-III and a left ventricular ejection fraction LVEF
40 of $\leq 50\%$ were selected. The presented study is explicitly marked as a pilot
41 study.

42 The new HeartGo[®] system used here for the first time allows heart rate
43 controlled training on a special pedelec via a smartphone app. The groups
44 were accompanied during the training rides by a doctor and a paramedic. No
45 cardiac complications occurred. The training units were increased in duration,
46 distance and target frequency every six months.

47 Frequency behaviour, pedaling and motor load on the pedelec as well as
48 climatic data such as ejection fraction, a biomarker (NT-pro BNP), risk factors,
49 arterial blood pressure and ergometric courses were measured.

50

51 **Results:**

52 The power tolerance increased by almost 2.5 times, a discrete decrease of the
53 resting heart rate by 3.7% was observed and pedaling power improved
54 accordingly. In the clinical data the ergometric power increased by 44% and
55 the LVEF improved by 29%. The NT-pro BNP value decreased by 27%. Body
56 Mass Index BMI remained constant at 27 and cholesterol levels showed no
57 significant changes.

58

59 **Conclusions:**

60 Pedaling according to this pilot study with its methodological limitations of
61 low number was safe and accompanied by significant health benefits. The
62 subjects were enthusiastic and satisfied with this form of training. This
63 training form can therefore be recommended to heart group participants

64 under certain medical conditions and can be used in the training process. The
65 results of this pilot study with its methodological weaknesses should be
66 verified in a larger follow-up study.

67

68 **Key words:**

69 **Pedelec, e-bike, heartrate control, cardiac failure, physical activity**

70

71

72

73

74

75

76

77

78

79

80

81

82

83

84

85

86

87

88

89

90

91

92

93

94

95

96 **Introduction**

97

98 Regular physical activity with endurance and strength training is one of the
99 secondary prevention measures for cardiovascular diseases with high
100 prevalence (1,2). Early rehabilitation should begin in hospital (phase I), be
101 continued in a rehabilitation clinic or as an outpatient close to home (phase II)
102 and then (phase III) preferably in outpatient heart groups (AHG).

103 A moderate training of 5x30 min or 150 min/week as an effective training goal
104 is aimed at, but often not achieved in heart groups. Endurance sports like
105 walking, running or swimming are recommended. Cycling in heart groups is
106 done less frequently because the performance in the groups is different.

107 Numerous studies have shown that cycling improves endurance, coordination,
108 flexibility and strength; at the same time, the body weight is not carried, so
109 that this sport is also used very well in the case of overweight and is
110 advantageous for heart patients. There is no structured offer for cycling as a
111 rehabilitation sport, especially for patients with heart failure. Here, the
112 recommendations were reserved, since patients with heart failure are usually
113 older participants and because of possible cardiac incidents or accidents, it is
114 assumed that cycling training is dangerous.

115 Here, electrically assisted cycling is a good option, especially since the pedelec
116 is becoming increasingly popular with seniors. Initial studies show that in
117 overweight people, an improvement in spiroergometric readings is possible
118 using e-bikes (3).

119

120 The disadvantage is that older riders usually choose a high pedaling power
121 support because it is "easier" to ride. This reduces the actually desired
122 training effect; there is "gentle riding".

123 With a heart rate-controlled system, this relieving posture is avoided. This
124 results in individual stress and comparable loads. This makes controlled
125 endurance training on the pedelec, similar to stationary ergometry, possible
126 as an option in addition to regular training. Studies on this method are not
127 available.

128 Also a scientific evaluation is then easier to realize, especially since the
129 benefits and risks of regular training of the rehabilitation phase III in
130 outpatient heart groups have not been sufficiently scientifically investigated.
131 Haberecht et al (2013; 4) report on insufficient lifestyle changes and about too
132 little physical activity in heart groups, which is, however, considered sufficient
133 by others (5). It should be noted that participation in a heart group once a
134 week and often less than 45 minutes is insufficient for an efficient training
135 program.

136 Reports on the use and value of such pedelec assistance systems have not yet
137 been published, apart from some publications on the general use of pedelecs
138 by athletes and seniors with diabetes mellitus (6).

139 10 subjects with a strictly defined NYHA stage II-III and a LVEF of $\leq 50\%$ were
140 selected. The presented study is explicitly marked as a pilot study, as a new,
141 so far not tested technique was used for exercise control. When selecting the
142 heart failure patients defined in this way, a higher number of subjects could
143 not be reached at only one study centre.

144
145
146
147
148
149
150
151
152
153
154
155
156
157
158

159 **Methodology**

160 In this pilot study the novel system HeartGo[®], which was tested for
161 practicability by preliminary investigations, was used. This frequency-based
162 system automatically controls the training process. Training and clinical
163 parameters were measured. Training was carried out in summer on level
164 paths along the Saar river ("outdoor" training), in winter inside a sports hall
165 ("indoor" training).

166
167 Anthropometric and demographic data at the beginning:
168 Period 22.8.17 - 10.09.19 with 93 trainings, 31" indoor", 62 "outdoor".
169 Number of cases N=10 with a participation frequency of over 90%.
170 The age was 61.5 (range 43-82) years, 2 participants were female and 8 male,
171 the average BMI was 27 (range 21-37).
172 The default training or target frequency fraud 96 (range 83-116) beats/min.

173
174 For further details see Suppl. 02
175

176 **Results:**

177 **Technical results:**

178 The user-friendliness of the system fluctuated strongly in the beginning. This
179 was fixed within 4 weeks.

180 At the beginning of the study the stability of the chest sensors also fluctuated.

181 The charge of the used batteries often did not last for the whole training
182 duration; they had to be replaced. The Bluetooth coupling was also not stable.

183 During the duration of the study the disturbances could be minimized.

184

185 **Clinical results**

186 The results (blood tests, echocardiography and functional changes) are
187 presented in detail in Tables 3-7 (Suppl. 03).

188

189 A questionnaire on well-being before the start and after the end of the study
190 (Suppl.04) showed (Fig. 1A) that subjective well-being improved significantly
191 during the study.

192

193 The ratings of perceived exertion (Fig. 1B) (18) on the BORG scale were
194 between 9 and 13, so that subjectively a rather moderate perceived exertion
195 can be assumed. The average rating was 11 = "quite easy".

196

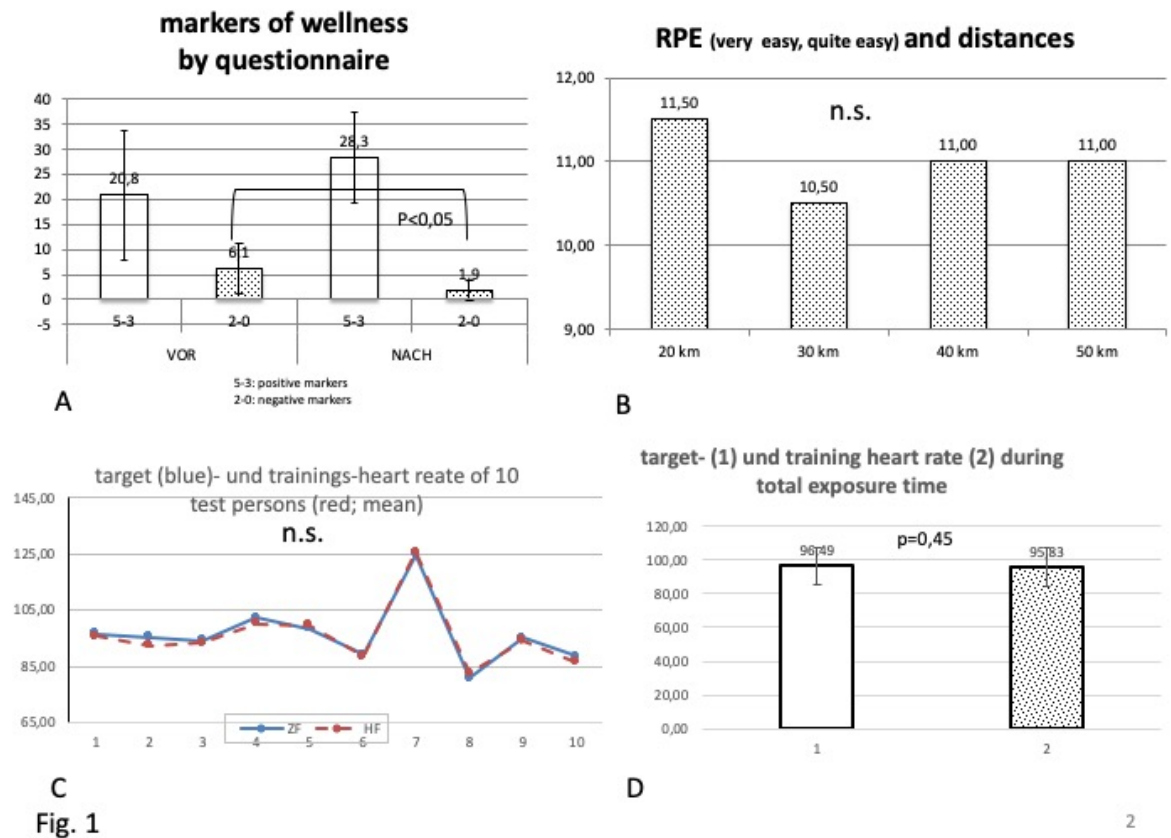


Fig. 1

2

197

198

199

200

201

202

203 The training showed a significant increase in performance:

204 The ergometry power (in Watt) increased from 91.67 to 132.5 Watt,

205 corresponding to 45%. (Fig. 2A)

206

207 The echocardiographically measured LVEF increased significantly from 44.1 to

208 56.6%. This corresponds to an increase of 29% (Fig. 2B).

209

210 Outpatient systolic blood pressure at the beginning and end of the study

211 decreased significantly from 128.5 to 115 mm Hg (a decrease of 11%) (Fig. 2C)

212

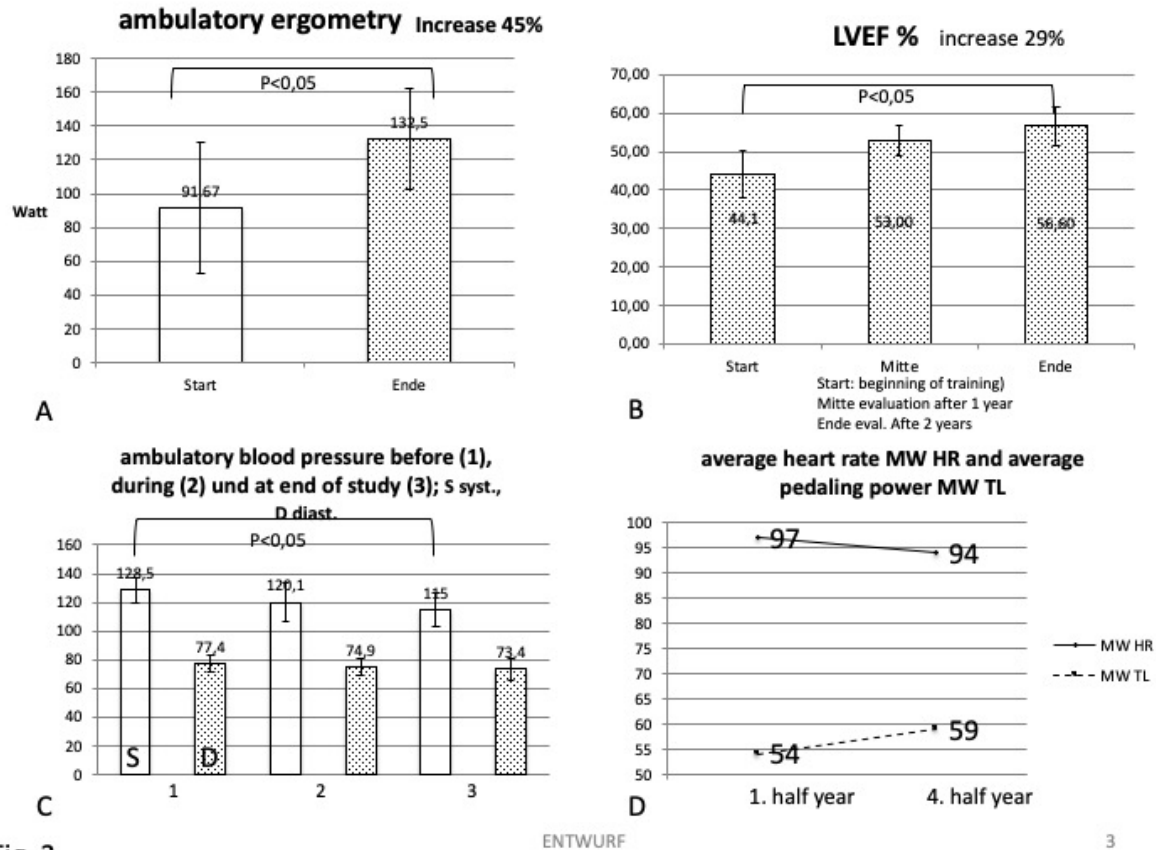


Fig. 2

ENTWURF

3

213

214

215

216

217

218

219

220

221

Laboratory parameters:

222

NT-pro BNP: (see Table 3) The initially increased values in all subjects

223

decreased significantly (decrease of 27.2%; $p > 0.05$).

224

225

Less noticeable were the values of the lipid status, i.e. total cholesterol, LDL

226

and HDL cholesterol and triglycerides. This only showed trends, but no

227

significant changes. All test persons were undergoing statin therapy at the

228

time of the study.

229

230 At the beginning, in the middle and at the end a 6-minute walking test was
231 performed. This showed a non-significant trend towards improvement
232 (increase of 7.3%).

233

234

235 **Complications and side effects during training:**

236 At the beginning and at the end of the duration of training there were two
237 incidents (2.15%):

238 In one patient, a sudden fall from the ride from a bicycle with suspected
239 cardiac syncope. An efficient first aid was given, but also a stay in hospital due
240 to a fracture of the humerus. The cause of the syncope remained
241 unexplained. No consequential damage occurred.

242 Another subject had an accident with a fall due to an unsafe road (driving over
243 grass). There was also a fracture of the upper arm with hospitalization. No
244 consequential damage occurred.

245 There were no incidents due to heart failure, and in a small number of cases it
246 was necessary to re-hospitalize the patient for training.

247

248 The blood pressure values (systolic and diastolic) were measured by means of
249 wrist gauges before, after half distance and at the end.

250 The systolic values decreased significantly by 11.6%. The resting blood
251 pressure values measured at the beginning of each training session could
252 confirm this trend: they also decreased by about 10%.

253

254 **Discussion:**

255 The results of the present pilot study show that training with a heart rate
256 controlled pedelec leads to a measurable and significant benefit in patients
257 with heart failure.

258 Cycling in general is one of the most suitable endurance sports for heart
259 patients, since the body weight does not have to be carried.

260 However, it is used too rarely, especially by patients with heart failure.

261 Especially for the group of people examined here, namely elderly people with
262 heart disease, an individually dosed and moderate load according to medical
263 guidelines is necessary. Electrically assisted cycling with a pedelec therefore
264 represents a sensible and attractive alternative for these patients. However, it
265 is still unknown whether and under which conditions a group of patients
266 defined in this way will benefit from pedelec riding. It was also unclear
267 whether this technology is safe enough to recommend the electric bicycle as a
268 training device for cardiac patients in general and for those with heart failure.

269 It should be noted that patients with heart failure who were previously
270 deprived of physical activity are now recommended endurance sports with a
271 high level of evidence and recommendation (IA), and that these sports
272 provide a high benefit.

273 Studies such as the HF-Action study (7), Keteyian et al 2018 (8), the CROS
274 study (9) conclude that the health benefit (mortality reduction) is
275 considerable and is between 20 and 40%. For some of the parameters
276 measured in this study (e.g. ejection fraction) this has also been proven in
277 comparable studies. Erbs et al (10) report that the EF in a verum group of
278 about 16 patients improved by 10.2% compared to a control group.

279
280 Studies on the special question of heart failure patients with the described
281 experimental design are not yet available.

282 There are isolated indications (11) that the pedelec offers advantages
283 compared to the "normal" bicycle and at least does not cause any loss of
284 training.

285 The use of heart rate as a target and control variable is an adequate and
286 recognized variable in endurance sports. The training effect can be read from
287 it (12). This is because it shows itself in a higher load tolerance, an increasing
288 peak VO₂ and a decreasing heart rate at constant load. Adequate frequency
289 control is therefore a desired prerequisite for such a training.

290 The present system HeartGo with an Android app on a commercially available
291 smartphone meets this requirement in an optimal way. In the described
292 training mode, the system allows the use of the heart rate as control variable.
293 This works very well, even if the stability, especially that of the sensors, was in
294 need of improvement. This can be clearly seen in the figures 1C and 1 D,
295 which show that optimum frequency control is achieved over the entire
296 training period.

297 The system was tested in a pilot project (MentorBike 4) (13) on patients in the
298 stationary rehabilitation phase II of a rehabilitation clinic and was judged to
299 be practicable with high acceptance. However, the duration of the test was
300 limited to three months, so it was appropriate to test and evaluate the app
301 over a longer period of time.

302
303 The present study was designed as a 2-year pilot study with prospective
304 design. Due to the low number of test persons, the results are only of limited
305 significance. Nevertheless, studies with a low number of subjects lead to
306 meaningful results, for example in the case of questions on physical activity in
307 heart failure (19).

308 Parameters for objective recording of training data on the pedelec are not
309 available at this time. In general, the training efficiency of heart groups has
310 not been sufficiently investigated, although this physical training has been a
311 central component of holistic rehabilitation sport for more than 40 years with
312 a high level of acceptance. Buchwalski et al. (2002) (5) showed a considerable
313 increase in performance by about 50%, but no effect on the "classic" risk
314 factors. However, final statements about the validity of heart groups are
315 missing. (14, 15). The safety of physical training in heart failure patients is
316 classified as high, depending on the severity of the condition. However, it has

317 been shown that the benefit clearly exceeds the risk (16). This could be
318 confirmed in the study presented. In relation to the total number of 93
319 training units, the incident rate is 2.15%. In contrast, there is an average
320 benefit of 28.6%, based on all significant changes (ergometry, ejection
321 fraction, blood pressure behaviour, biomarkers).

322
323 For high-risk patients such as the group of test persons at the introduction of
324 a pedelec concept, medical and paramedical supervision is necessary. The test
325 persons should be thoroughly trained at the beginning of the training.

326
327 If we take as a measure of acceptance the sensation of exertion of the load up
328 to 150 min or 50 km final load the sensation of load according to the BORG
329 scale, this value remains constant at 11 until the end of the study. The ratio of
330 distance (driving distance) to BORG value (18) then increases 2.5 times as an
331 indication of a significant improvement in performance.

332
333 The clinical data such as increase in left ventricular ejection fraction LVEF,
334 ergometry, 6-minute walking test (6MWD) (14,17), the decrease in the
335 biomarker NT-pro-BNP or systolic blood pressure indicate a measurable
336 improvement, even if a progression or therapy-related bias due to
337 uncontrolled domestic activity or medically indicated changes in therapy
338 cannot be excluded.

339 Further training effects of decrease in cardiovascular risk factors were
340 discernible in the trend.

341 The decrease in heart rate and the increased pedaling load correspond to a
342 moderate training effect (19), which also did not change substantially during
343 the performance increase.

344
345 Some of the measured parameters, such as ejection fraction and the NTpro-
346 BNP values, show an improvement in prognosis. However, hard endpoints
347 require a longer observation period, as Taylor et al. 2019 (19) demonstrated.

348 Further studies with a larger number of test persons are therefore necessary
349 for further clarification.

350

351

352

353

354

355

356

357

358

359

360

361

362

363

364

365

366

367

368

369

370

371

372

373

374

375

376

377 **Conclusion and Key messages:**

378

379 The described method of heart rate-controlled cycling on a pedelec in
380 patients with heart disease is effective and acceptance was high.

381 After careful instruction and practice, this form of training can also be
382 recommended to patients for leisure time activities and training.

383

384 1. training of patients with moderate heart failure on the e-bike (pedelec) is
385 possible, safe and improves the clinical condition of the existing underlying
386 disease

387 2. a sustainable training effect for this group could be proven in the presented
388 two-year pilot study.

389 3. the indicators of well-being and performance tolerance increased
390 significantly and the blood pressure values decreased accordingly during the
391 study period.

392 4. the objective performance parameters such as ergometry load and the 6-
393 minute walking test improved.

394 5. the initially decreased left ventricular ejection fraction increased
395 significantly.

396 6. the positive results of this pilot study with 10 subjects require verification
397 by a multi-center follow-up study.

398

399

400 **References:**

- 401 1. Löllgen H Gesundheit, Bewegung und körperliche Aktivität (2015) Dtsch. Z.
402 Sportmed.,66,139
403
- 404 2. Steinacker, JM, Liu Y et al. Körperliches Training bei Patienten mit Herzinsuffizienz
405 Dtsch.(2004) Z. Sportmed. 55, 124
406
- 407 3. Höchsmann C, Meister S, Gehrig D, Gordon E, Yanlei Nussbaumer LM, Rossmeissl A,
408 Schäfer J, Hanssen H, Schmidt-Trucksäss A
409 Effect of E-Bike Versus Bike Commuting on Cardiorespiratory Fitness in Overweight
410 Adults: A 4-Week Randomized Pilot Study
411 Clinical Journal of Sport Medicine (2018). 28(3):255–265
412
- 413 4. Haberecht, O, A Bärsch-Michelmann (2013), Herzgruppen in Deutschland: Stand und
414 Perspektiven. Herzmedizin 4, 33-38
415
- 416 5. Buchwalski G, Buchwalsky R, Held K, (2002) Langzeitwirkungen der Nachsorge in
417 einer ambulanten Herzgruppe. Eine Fall-/Kontrollstudie. Z. Kardiol. 91:139
418
- 419 6. Cooper AR, B Tibbitts, C England, D Procter, A Searle, SJ Sebire, E Ranger, ALS Page,
420 (2018) Potential of electric bicycles to improve the health of people with Type 3
421 Diabetes: a feasibility study. Diabet. Med. 00:1-4
422
- 423 7. O’Connor CM, Whellan, D, L. Lee, K, Keteyian, S, Cooper, LS, et al. Efficacy and Safety
424 of Exercise Training in Patients With Chronic Heart Failure HF-ACTION Randomized
425 Controlled Trial JAMA (2009), 301,1439-1450
426
- 427 8. Keteyian S, Kerrigan SJ, Lewis B, Ehrman B, Brwander CA Exercise Training workloads
428 in cardiac rehabilitation are associated with clinical outcomes in pt. With heart
429 failure Am Heart J. 2018, 204, 76-82
430
- 431 9. Rauch B, Constantinos H D, Doherty P, Saure D, Metzendorf M, Salzwede A, Völler H,
432 Jensen K, Schmid JP; The prognostic effect of cardiac rehabilitation in the era of
433 acute revascularisation and statin therapy: A systematic review and meta-analysis of
434 randomized and non-randomized studies – The Cardiac Rehabilitation Outcome
435 Study (CROS) Europ.J.Preventive Card.(2016), 26
436
- 437 10. Erbs S1, Höllriegel R, Linke A, Beck EB, Adams V, Gielen S, Möbius-Winkler S, Sandri
438 M, Kränkel N, Hambrecht R, Schuler G.
439 Exercise training in patients with advanced chronic heart failure (NYHA IIIb) promotes
440 restoration of peripheral vasomotor function, induction of endogenous regeneration,
441 and improvement of left ventricular function.
442 Circ Heart Fail. (2010);3(4):486-94.
443
- 444 11. Peterman HE et al. Pedelects as a physically active transportation mode Eur. J.
445 Appl.Physiol. 2016 116, 1565
446

- 447 12. Vanhees L, De Sutter J, Geladas N, et al. Importance of characteristics and modalities
448 of physical activity and exercise in defining the benefits to cardiovascular health
449 within the general population: Recommendations from the EACPR (Part I). Eur J Prev
450 Cardiol 2012; 19: 670–686.
451
- 452 13. Emrich, A, Leonhardt, F, Werth, D, Loos, P roactive Assistance for Device-Integrated
453 Training Adjustment in Outdoor Rehabilitation Training . Congressmitteilung DFKI
454 Saarbrücken 2016
455
- 456 14. Graf C1, Bjarnason-Wehrens B1, Löllgen H
457 Ambulante Herzgruppen in Deutschland – Rückblick und Ausblick
458 DEUTSCHE ZEITSCHRIFT FÜR SPORTMEDIZIN (2004) 12,339-346
459
- 460 15. Benzer B, Rauch B, Schmid JP, Zwisler A, Dendale P et al. (2017)
461 Exercise-based cardiac rehabilitation in twelve European countries results of the
462 European cardiac rehabilitation registry
463 International Journal of Cardiology 228, 58–67
464
- 465 16. Steinacker JM, Liu Y, Stilgenbauer F, Nething K
466 Körperliches Training bei Patienten mit Herzinsuffizienz
467 DEUTSCHE ZEITSCHRIFT FÜR SPORTMEDIZIN Jahrgang 55, Nr. 5 (2004) 124-130
468
- 469 17. Gordon H. G, Sullivan MJ, Thompson PJ, Fallen EL, Pugsley SO, Taylor W, B. Berman LB
470 The 6-minute walk: a new measure of exercise capacity in patients with chronic heart
471 failure
472 Can. Med. Ass (1985) 132, 919
473
- 474 18. Williams N, The Borg Rating of Perceived Exertion (RPE) scale
475 Occupational Medicine 2017; 67: 404–405
476
- 477 19. Taylor RS, Long, L, IMordi, IR
478 Exercise-Based Rehabilitation for Heart Failure, Cochrane Systematic Review, Meta-
479 Analysis, and Trial Sequential Analysis (2019) Heart Failure VOL. 7, NO. 8, 2019
480
481

482

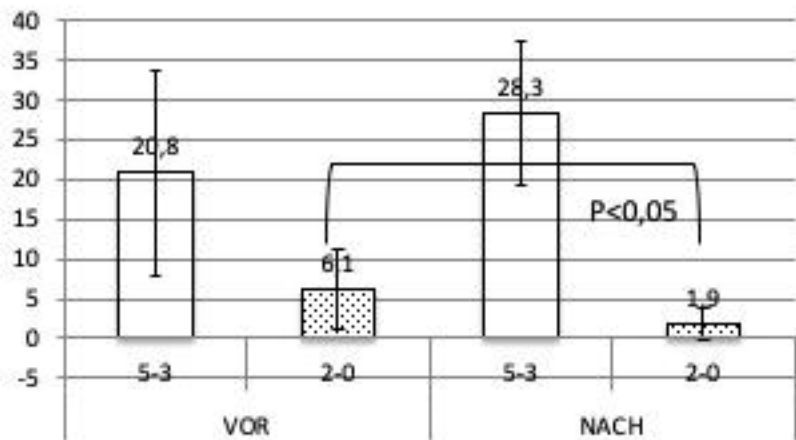
483

484

485

486

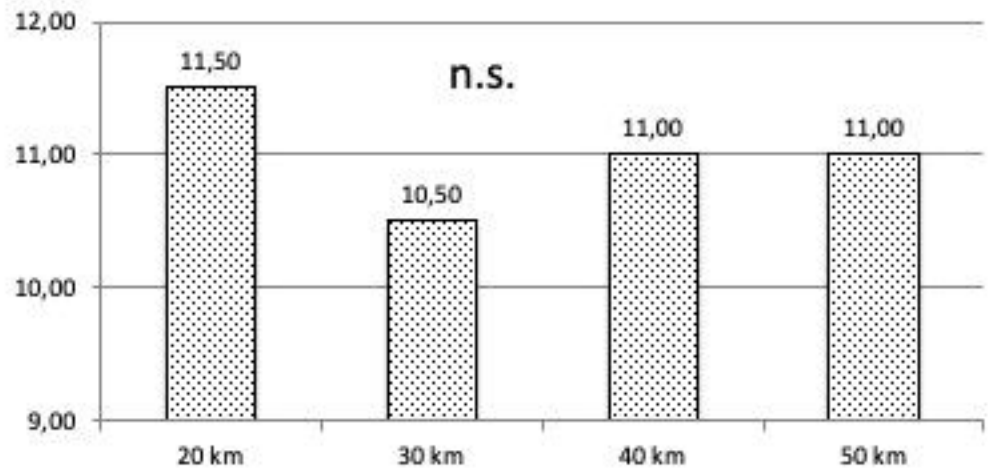
markers of wellness by questionnaire



5-3: positive markers
2-0: negative markers

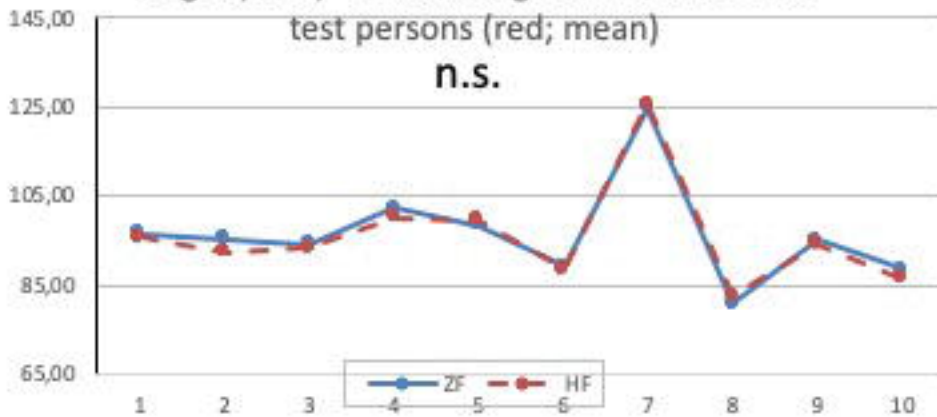
A

RPE (very easy, quite easy) and distances



B

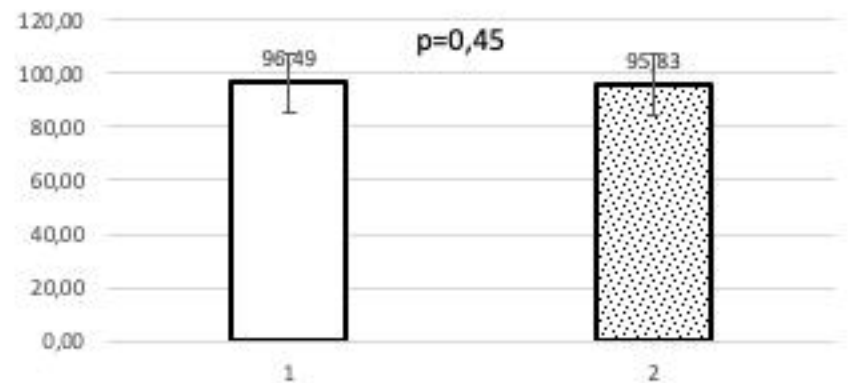
target (blue)- und trainings-heart reate of 10 test persons (red; mean)



C

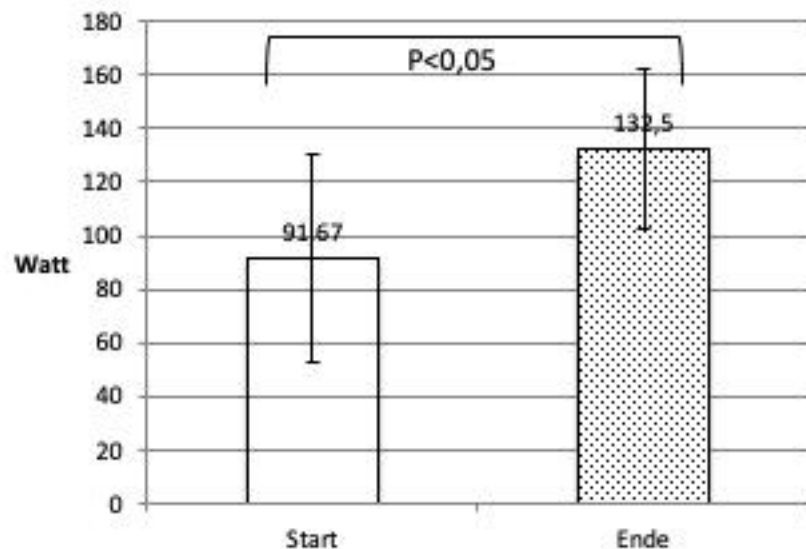
Fig. 1

target- (1) und training heart rate (2) during total exposure time



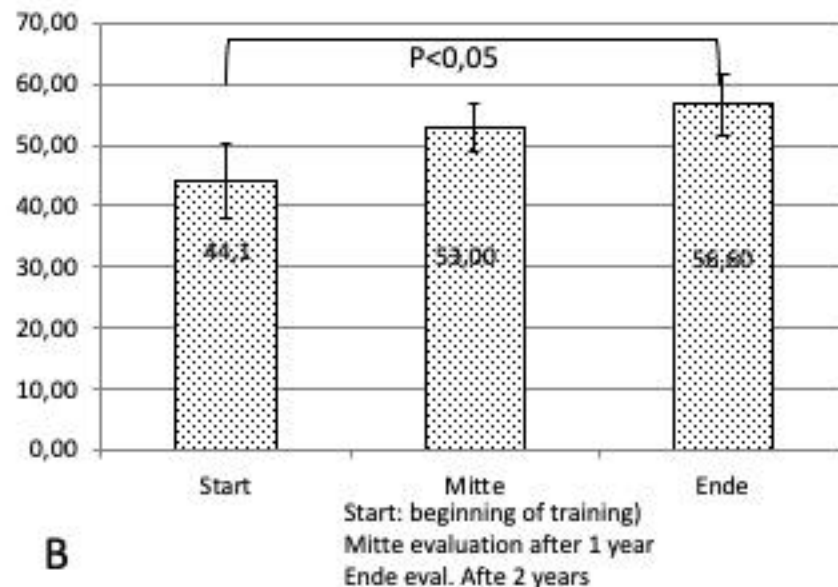
D

ambulatory ergometry Increase 45%



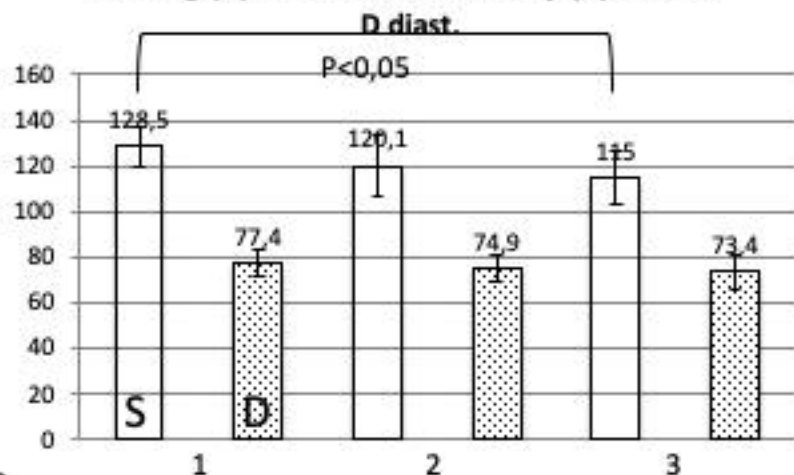
A

LVEF % increase 29%



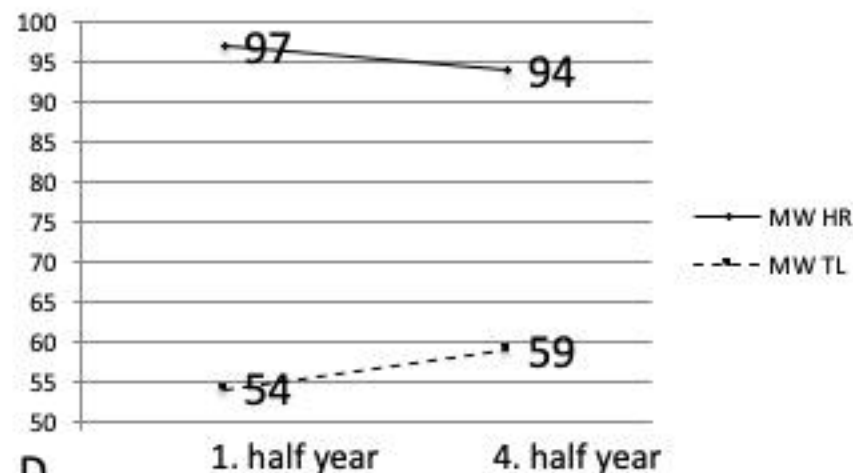
B

ambulatory blood pressure before (1), during (2) und at end of study (3); S syst., D diast.



C

average heart rate MW HR and average pedaling power MW TL



D

Fig. 2