

Title: G protein subunit gamma 4 expression has potential of detection, prediction, and therapeutic target for liver metastasis of gastric cancer

Short Title: GNG4 in liver metastasis of gastric cancer

5

Haruyoshi Tanaka, MD, PhD, Mitsuro Kanda, MD, PhD, FACS, Takashi Miwa, MD, PhD, Shinichi Umeda, MD, PhD, Koichi Sawaki, MD, Chie Tanaka, MD, PhD, Daisuke Kobayashi, MD, PhD, Masamichi Hayashi, MD, PhD, FACS, Suguru Yamada, MD, PhD, FACS, Goro Nakayama, MD, PhD, Masahiko Koike, MD, PhD, and Yasuhiro Kodera MD, PhD, FACS.

10

Department of Gastroenterological Surgery (Surgery II), Nagoya University Graduate School of Medicine, Nagoya, Japan

Grant support: This work was supported by a Grant-in-Aid for Encouragement of Young Scientists (2017, B, 17K16538), the Japanese Society for Gastroenterological Carcinogenesis (2016), Nakayama Cancer Research Institute (2016), and the Yokoyama Foundation for Clinical Pharmacology (2016).

Abbreviations: ERK1/2, extracellular signal-regulated kinase 1/2, GNG, G protein gamma; mRNA, messenger RNA; PI3K, phosphoinositide 3-kinase; RNAseq, RNA-sequencing; RT-PCR, reverse-transcription polymerase chain reaction; MRI, magnetic resonance imaging

Correspondence: Dr. M. Kanda, Department of Gastroenterological Surgery (Surgery II), Nagoya University Graduate School of Medicine, 65 Tsurumai-cho, Showa-ku, Nagoya 466-8550, Japan

Tel: +81-52-744-2249, Fax: +81-52-744-2252, E-mail: m-kanda@med.nagoya-u.ac.jp

Disclosures: The authors declare no conflicts of interest.

NOTE: This preprint reports new research that has not been certified by peer review and should not be used to guide clinical practice.

Transcript Profiling: None.

Writing Assistance: We thank Edanz Group (www.edanzediting.com/ac) for editing a draft of this manuscript.

Author Contributions:

- 5 study concept and design; Kanda M, Kodera Y.
acquisition of data; Kanda M, Tanaka H, Miwa T, Umeda S, Sawaki K, Tanaka C, Kodera Y.
analysis and interpretation of data; Tanaka H, Kanda M, Kodera Y.
drafting of the manuscript; Tanaka H, Kanda M, Kodera Y.
critical revision of the manuscript for important intellectual content; Tanaka H, Kanda M, Miwa
10 T, Umeda S, Sawaki K, Tanaka C, Kobayashi D, Hayashi M, Yamada S, Nakayama G, Koike
M, Kodera Y.
statistical analysis; Tanaka H, Kanda M.
obtained funding; Tanaka H, Kanda M, Kodera Y.
technical, or material support; Tanaka H, Kanda M, Miwa T, Umeda S, Sawaki K, Tanaka C,
15 Kobayashi D, Koike M.
study supervision; Kodera Y.

ABSTRACT

Liver metastasis of gastric cancer is the most common for hematogenous metastases and so fatal, that the identification of novel markers and targets for therapy are crucial. We conducted transcriptome analyses between synchronous liver metastasis, primary tumor, and adjacent
5 tissues from four patients with metastasis confined to the liver to discover that *GNG4* upregulated substantially in primary gastric cancer tissues. Quantitative RT-qPCR assay for 300 gastric cancer patients revealed that higher levels of *GNG4* in primary cancer were associated with shorter overall survival and a higher risk of liver recurrence. The oncogenic phenotypes of *GNG4* were determined by knockout and forced expression of *GNG4*. Tumor formation by
10 *GNG4* knockout cells was more strikingly attenuated in a liver metastasis mouse model compared with a subcutaneous model. *GNG4* is a candidate for a therapeutic target for liver metastasis, and its expression may enable us to provide better disease monitoring for liver metastasis.

15 **Keywords:** *GNG4*; gastric cancer; liver metastasis; transcriptome analysis; genome editing

INTRODUCTION

Gastric cancer represents the third most leading cause of death among malignancies (Allemani et al., 2018; Ferlay et al., 2019; Tan & Yeoh, 2015). The 5-year overall survival, varying from 20% to 50%, remains dismal, and its trends improved little or rather flat in this decade (Allemani et al., 2018). At early stages, most instances of gastric cancer can be eradicated surgically (Hiki et al., 2018). What worsens outcomes in advanced gastric cancer is distant synchronous and metachronous metastases. To minimize the risk of metachronous metastases, gastrectomy with perioperative chemotherapy or chemoradiotherapy are standard therapies. Although several molecular targeted drugs also have become available, they are only recently being considered for their indications (Bang et al., 2010; Kang et al., 2017; Shitara et al., 2018).

The liver is the most common site of hematogenous metastasis from gastric cancer, yet the diagnostic and therapeutic strategy for treating liver metastasis remains demanding (Kodera et al., 2014). Although palliative therapy is standard care for liver metastasis, it is getting considered that single lobe hepatectomy with R0 margin for a solitary nodule can improve their prognoses for either synchronous or metachronous liver metastases (Kodera et al., 2014; Markar et al., 2016; Van Cutsem et al., 2016). Despite this trend, chemotherapeutic strategies for liver metastasis are still limited to the same general protocol as those used for other distant metastasis, unlike specific therapies available for peritoneal metastasis (Ishigami et al., 2018; Takahashi et al., 2018). It is also challenging to diagnose small metastasis in liver accurately preoperatively. Moreover, early disease recurrence may imply subclinical dissemination has occurred at the time of surgery (Amikura et al., 1995; Sakamoto et al., 2020).

Cancer cells of the primary gastric tumor are considered to enter circulation through the portal vein to the liver to form metastatic foci. The background of this inference comes from the 'seed and soil' theory. This theory advocates during the process of every metastasis, cancer cells acquire diverse malignant phenotypes through various selective pressure according to organs to which cancer cells to metastasize (de Groot et al., 2017; Mathot & Stenninger, 2012; Mendoza

& Khanna, 2009). Once these cancer cells detach from the primary foci and enter the portal vein circulation, they are exposed to hypoxia and anoikis (Shimizu et al., 2018). Eventually, only a subclone with suitable attributes for a microenvironment of the liver can grow there. During the last decades, bioinformatics analyses using next-generation sequencing or microarray techniques have illustrated a genetic profile of metastatic potential, and this has enabled the development of novel drugs (Brosnan & Iacobuzio-Donahue, 2012; Kim et al., 2015; Sakamoto et al., 2020; Tanaka et al., 2016). Given this achievement, there must be a novel gene profile that drives cancer cells to form metastasis specific to liver, but this gene profile is yet to be elucidated (Bang et al., 2010; Menard et al., 2003; Slamon et al., 2001).

Hence, discovering novel genes accounting for liver metastasis by organ-oriented approach will shed light on strategy for advanced gastric cancer from novel aspects. We hypothesized that primary cancer must have the same gene profile as the metastatic liver foci have, and it could provide a clue to discover a novel driver oncogene. In this study, we used a transcriptomic approach to identify the nucleotide-binding protein (G protein) subunit gamma-4 gene (*GNG4*) as a representative candidate driver of liver metastasis. In the literature, *GNG4* was only reported as a tumor suppressor gene in glioblastoma and renal cell carcinoma (Maina et al., 2005; Zhang et al., 2018). This study revealed its malignant roles and impact on gastric cancer patients' outcomes through expression and functional studies of *GNG4*. To the best of our knowledge, this is the first study to have revealed novel malignant roles for *GNG4* in metastasis and outcomes in gastric cancer.

MATERIALS AND METHODS

Sample collection

For transcriptome analysis, we used 12 surgically resected specimens consisting of three foci from four patients each; primary gastric cancer tissues, normal mucosae, and liver metastases obtained from four patients of gastric cancer confined to synchronous liver metastasis (Figure 1A). To validate contribution and determine the clinical significance of

GNG4 expression, we acquired primary gastric cancer tissues with Union for International Cancer Control (UICC) stages I to IV from 300 patients who underwent gastric resection at our institution between 2001 and 2014. This cohort was independent of four patients for which we conducted transcriptomic analysis above. They did not undergo preoperative treatment. Since 5 2006, all patients with stage II to III gastric cancer underwent adjuvant chemotherapy using S-1 unless the patient's condition denied indication. To add validation for the results from our institutional data, we employed the GSE62254 dataset, global gene expression experiments (Cristescu et al., 2015; Szasz et al., 2016). We acquired a cell line MKN1 from the American Type Culture Collection (Manassas, VA, USA) for *in vitro* and *in vivo* experiments. All 10 informed consent for the use of clinical samples and data was obtained from all patients in written manners, consistent with the requirement Institutional Review Board at Nagoya University, Japan.

Gene expressional analyses

15 For global gene expression profiling analysis, we applied HiSeq Sequencing System (Illumina, San Diego, CA) to compare the expression levels of 57,749 genes as described previously (Tanaka et al., 2018). We used quantitative RT-PCR (qRT-PCR) to determine *GNG4* mRNA levels using previously published protocols (Kanda, Tanaka, et al., 2016). The primer sequence for qRT-PCR specifically designed for *GNG4* is provided in Supplemental Table 1. 20 Immunoblot assays were performed using a rabbit anti-*GNG4* monoclonal antibody (Product code, 13780-1-AP; Proteintech, Rosemont, IL, USA), as previously described (Oya et al., 2016). Wess (Protein Simple, San Jose, CA, USA) was used for pathway analyses by immunoblotting.

Supplementary Table 1. Primer sequences

RT-PCR	Forward	Reverse
	ACCACTAGCATCTCCCAAGC (exon 1)	CAGGCACTGGAATGATGAGA (exon 2)
siRNA	Sense	Anti-sense
si <i>GNG4</i> -01	UUGGUGUGCAUUAAGGUAC + dTdT	GUACCUUAAUGCACACCAA + dTdT
si <i>GNG4</i> -02	GUCUGGACUUAAGAGUUUA + dTdT	UAAACUCUUAAGUCCAGAC + dTdT
si <i>GNG4</i> -03	UCAUUAUUGGCAAAGAAAA + dTdT	UUUUCUUUGCCAAUAAUGA + dTdT
si <i>GNG4</i> -04	CAGUGGUCCUACAAAGGUA + dTdT	UACCUUUGUAGGACCACUG + dTdT
Guide RNA	Forward	Reverse
	TAATACGACTCACTATAGTTCGCGAG AAGAAGTTCT	TTCTAGCTCTAAAACAAAGAACTTCT TCTCGCGAAC
Cleavage assay	Forward	Reverse
	CTGGAACCTCCACTCCTCAC	AGGAGGCGTTTTTCATCACAC

RT-PCR, reverse transcription polymerase chain reaction

Knockout and forced expression of GNG4

We performed genome editing applying the CRISPR/Cas9 system to generate stable *GNG4*-knockout (d*GNG4*) gastric cancer cell lines, as previously reported (Kanda et al., 2018).

- 5 By the GeneArt Genomic Cleavage Detection Kit (Thermo Fisher Scientific, Waltham, MA, USA), the efficiency of genomic cleavage was evaluated 72 hours after the transfection of Cas9. The primer set is described in Supplemental Table 1.

- For forced expression of *GNG4*, the *GNG4* cDNA clones ligated as open reading frame sequences into CMV Flexi Vector pFN21A (GenBank ID: EU621374.1) were purchased
10 (product ID, FHC02107; Promega, Madison, WI, USA). Using the NEON® (Thermo Fisher) system, 0.2µg of the *GNG4* vector was transfected into MKN1 cells (1×10^5). Analyses of phenotypes were performed from the second day of transfection,

Functional assays and mouse models of gastric cancer

- 15 Cell proliferation was evaluated using the Premix WST-8 Cell Proliferation Assay Kit (DOJINDO Inc., Kumamoto, Japan), as previously described (Shibata et al., 2017).

Distributions of cells in specific phases of the cell cycle were evaluated applying the Cell Clock Cell Cycle Assay (Biocolor Ltd, Antrim, United Kingdom). To detect apoptotic cells with depolarized mitochondrial membranes, Mito Potential Kit (Merk, Darmstadt, Germany) was used through Muse Cell Analyzer (Merck) (Kanda et al., 2018). We tested drug sensitivity analysis for 5FU, using WST-8 kit, as described previously (Kanda, Shimizu, et al., 2016). Adhesion of gastric cancer cells to a solid matrix was evaluated by the CytoSelect 48 Well Cell Adhesion Assay Kit (Cell Biolabs, San Diego, CA, USA) as previously described (Miwa et al., 2017).

To evaluate the influence of *GNG4* on tumorigenicity *in vivo*, at the outset, we employed a mouse subcutaneous xenograft model as previously reported (BALB/c-nu/nu; n = 3, each) (Kanda et al., 2018). We evaluated the role of *GNG4* in liver metastasis using an already established mouse model (NOD-SCID; n = 4, each) (CLEA Japan Inc., Tokyo, Japan) (Kanda et al., 2018; Miwa et al., 2019). The IVIS Spectrum imaging system (Xenogen, Alameda, CA, USA), and magnetic resonance imaging (MRI) (MRS 3000, MR solutions, Guildford, UK) were employed to observe tumor formation in the livers of engrafted mice. All animal experiments were conducted consistent with the ARRIVE guidelines and were approved by the Animal Research Committee of Nagoya University.

Statistical analysis

The significance of differences between the two variables was assessed using the Student *t*-test for normally distributed data and the Wilcoxon test for non-normally distributed data. Fisher's exact was used to analyze the significances of categorical data. *P* values < 0.05 were considered statistically significant. For multiple comparisons, *P* values were adjusted by the Bonferroni-Hochberg method. For time-survival analyses, survival curves were generated using the Kaplan–Meier method, and Cox proportional hazards models were used to estimate the hazard ratio and *P* values. Analyses method of transcriptomic analysis were described previously (Tanaka et al., 2018). All other statistical analyses were performed using R version

3.6.1 software (The R Foundation for Statistical Computing, Vienna, Austria).

RESULTS

Identification of GNG4 as a candidate driver gene of liver metastasis of gastric cancer

5 Global expression profiling was conducted to compare the expression levels of 57,749 genes between primary lesion, liver metastasis, and adjacent normal tissues. The qualities of the RNA preparations were sufficient for analysis as indicated follows: yield data per sample = 2,981 Mb, mean reads per sample = 29,512,162 pairs, mean rate \geq Q30 = 94.40%, mean quality score = 34.05, and mean total mapped-read rate = 89.38%. The 57,749 genes were filtered to

10 yield 94 genes according to following five conditions: (1) a significant difference ($Q < 0.05$) between primary cancer lesions (C) and adjacent normal gastric tissues (N), (2) upregulated in C, and (3) not significantly different ($P \geq 0.05$) between C and liver metastatic lesions (H). We next selected 11 genes by filtering the 94 overlapping genes according to (4) the base-2

15 average expression levels of C and N [$(\log_2 C + \log_2 N)/2$] > 1 (Figure 1A, Table 1)

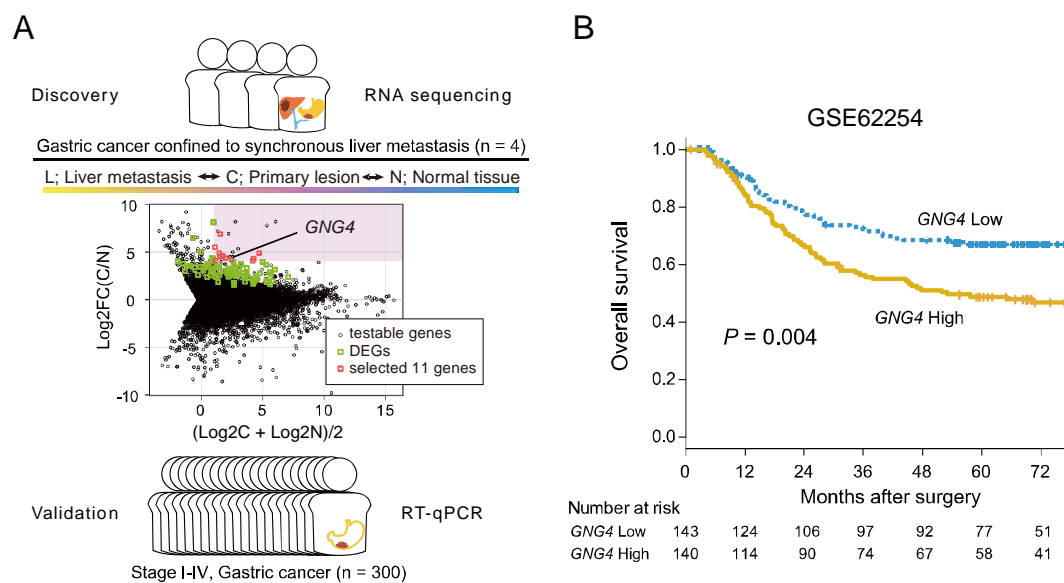


Figure 1. *GNG4* is identified as a putative oncogene driving liver metastasis of gastric cancer. Present study design is illustrated. 57,749 genes from RNA-seq analysis on 12 specimens from gastric cancer patients with metastasis confined to the liver. Log-ratio and mean average (MA) plot of expression levels of C and N to select putative eleven genes (A). DEGs, differentially expressed genes. Kaplan-Meier plot of overall survival using GSE62254 dataset stratified by the median value of *GNG4* (B).

Table 1. Differentially expressed genes associated with liver metastasis.

Gene symbol	Chromosomal locus	Function	C/N		L/C	
			Log2FC	Q	Log2FC	P
<i>GNG4</i>	1q42.3	Signal transducer	4.84	0.005	0.29	0.73
<i>TNFRSF11B</i>	8q24.12	Apoptosis modulator	4.57	0.005	0.53	0.43
<i>VGF</i>	7q22.1	Growth factor	5.46	0.005	-0.81	0.34
<i>DNAJC12</i>	10q21.3	Protein modulator	4.15	0.005	-1.16	0.10
<i>RBP4</i>	10q23.33	Retinol carrier	4.25	0.005	1.51	0.05
<i>SYT7</i>	11q12.2	Signal transducer	4.29	0.005	0.30	0.63
<i>NPY</i>	7p15.3	Signal transducer	4.86	0.005	0.09	0.90
<i>THBS4</i>	5q14.1	Adhesion modulator	4.01	0.005	0.95	0.28
<i>KRT6B</i>	12q13.13	Structural molecule	6.83	0.034	-1.53	0.08
<i>FNDC1</i>	6q25.3	Signal transducer	4.50	0.005	-0.89	0.16
<i>UTS2R</i>	17q25.3	Signal receptor	4.50	0.005	0.50	0.57

C, primary cancer tissue; N, adjacent normal tissue; L, liver metastasis; FC, fold change

We chose *GNG4* for further analysis as a candidate driver gene that promotes liver metastasis, as GSE62254 dataset revealed that higher levels of *GNG4* expression in gastric cancer tissues were associated with shorter overall survival (hazard ratio 1.73 [95% confidence interval, 1.20–2.50], $P = 0.004$) (Figure 1B). Being able to reach little information on *GNG4* (Pal et al., 2016), we identified this gene as a potential candidate for a therapeutic target and a biomarker for liver metastasis of gastric cancer and brought it further analysis.

Clinical implications of *GNG4* expression in tumor tissues

First, looking at the *GNG4* mRNA expression levels in cancer tissues among stages I-IV disease, we found that *GNG4* expressions of stage IV were significantly higher than stage I and II-III, and there was no significant difference between stages I to III (Figure 2A). Among stage IV, patients with liver metastasis had higher *GNG4* levels than without it. However, this was

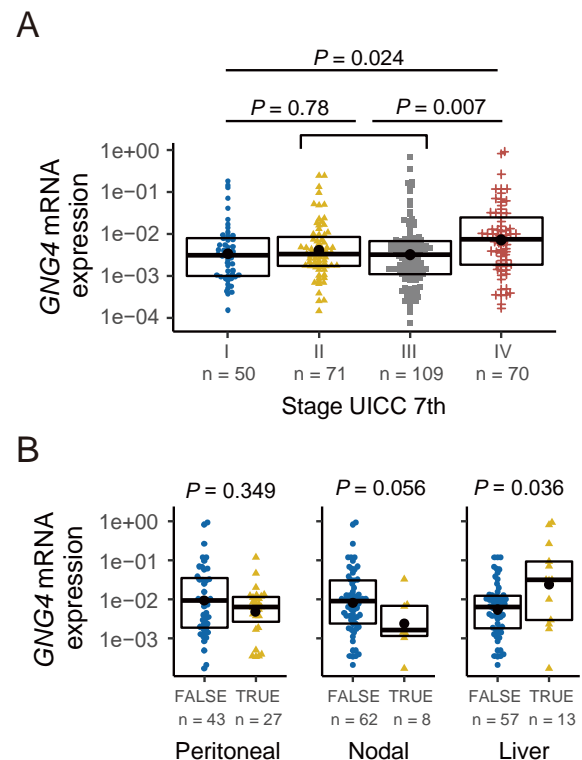
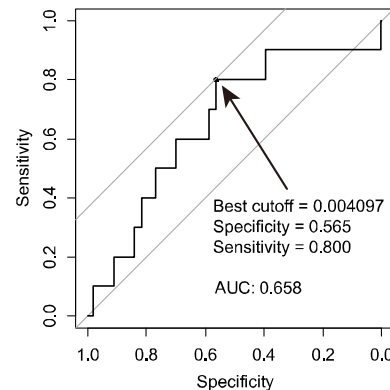


Figure 2. *GNG4* expression was high in among UICC stage IV gastric cancer tissues, especially in with liver metastasis. *GNG4* mRNA expression (*GNG4*/*GAPDH*) stratified by the UICC stage (stage I vs. II+III vs. IV) (A) and with or without (true/false) three distant metastatic foci (peritoneal, lymph node, liver) among UICC stage IV cohort (n = 71). Box, bold bar, and black point indicates interquartile range, median, and mean, respectively.

not the case for peritoneal and nodal distal metastasis (Figure 2B).

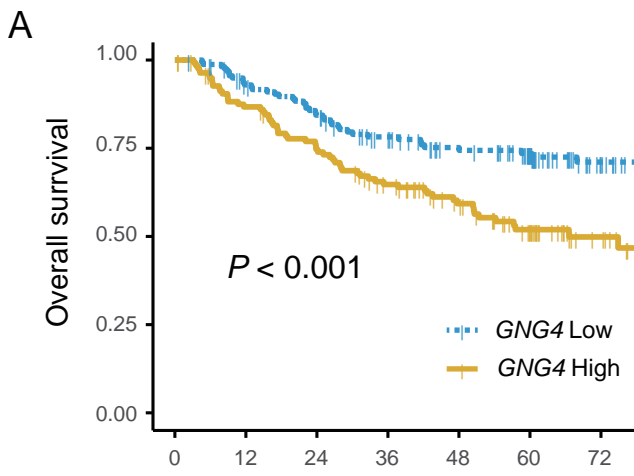
We moved on to set the cutoff value to see the implications of *GNG4* expressions. The receiver operating characteristic (ROC) curve was generated to predict liver recurrence within one year postoperatively; the area under the curve was 0.696. By using this ROC, we defined high *GNG4* expression as $GNG4/GAPDH > 0.004097$, according to the Youden index (Supplemental



Supplemental Figure 1. receiver operating characteristic (ROC) curve to predict liver recurrence within one year among UICC stage II-III cohort.

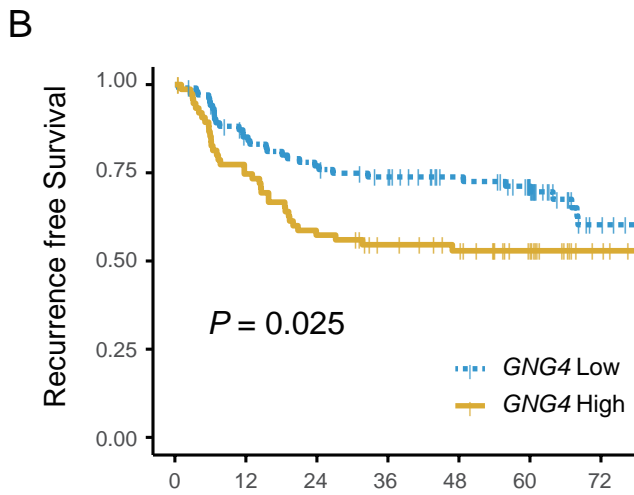
Figure 1). Consistent with the association between UICC Stages and *GNG4* expressions among the whole cohort, the high *GNG4* group had shorter overall survival significantly than the low group had (hazard ratio, 1.94 [1.32–2.85]; $P < 0.001$) (Figure 3A).

We next focused on stage II-III cohort ($n = 180$) to see the *GNG4*'s impact on prognosis, particularly recurrence and its pattern. All of *GNG4* clinicopathological valuable similarly distributed between high and low *GNG4* expression groups, including stage II or III (Supplemental Table 2). The high *GNG4* group, nevertheless, exhibited poorer recurrence-free survival (hazard ratio, 1.73 [1.07–2.79]; $P = 0.025$) (Figure 3B). The cumulative recurrence rate for liver metastasis was significantly higher in the high *GNG4* group compared to the low group (hazard ratio, 3.34 [1.16–9.63]; $P = 0.019$), but not a case for either peritoneal or nodal recurrence (Figure 3C). High *GNG4* expression was an only risk factor for liver recurrence independently according to multivariate analysis (hazard ratio, 3.471 [1.20–10.0]; $P = 0.022$) (Table 2). We further tested if *GNG4* represent a biomarker for chemotherapy resistance, by stratified into subsets with or without chemotherapy. Among the only subset with adjuvant chemotherapy, the high *GNG4* group showed higher liver recurrence rate significantly (hazard ratio, 8.32 [1.02–67.7], $P = 0.013$), but not significant among the subset without adjuvant chemotherapy (Figure 3D).



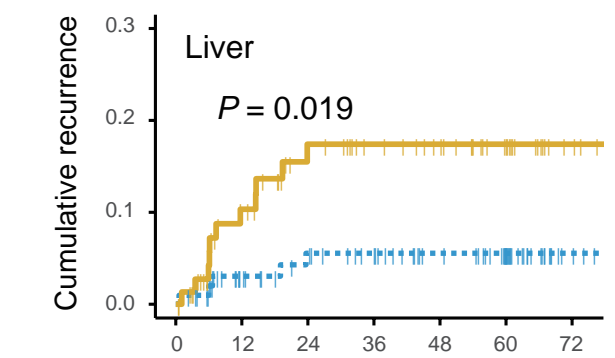
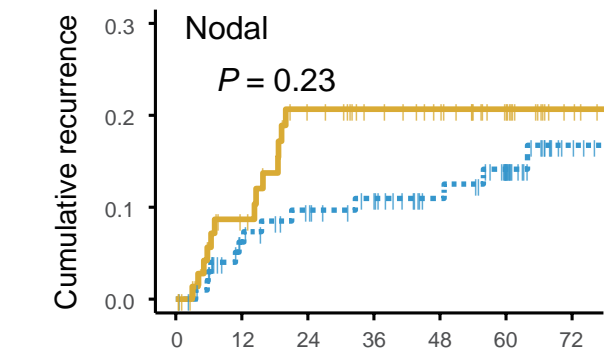
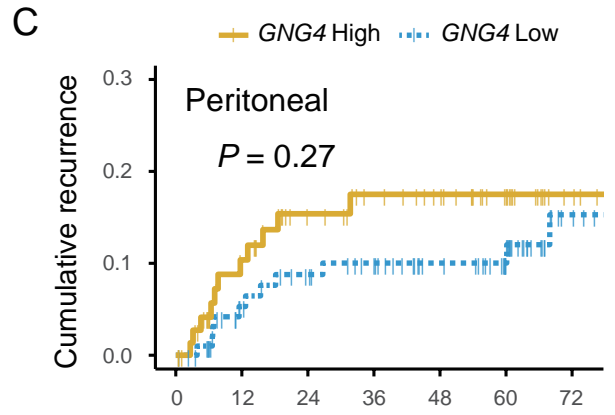
Number at risk

	0	12	24	36	48	60	72
GNG4 Low	160	142	128	109	93	75	44
GNG4 High	140	117	99	80	62	42	20



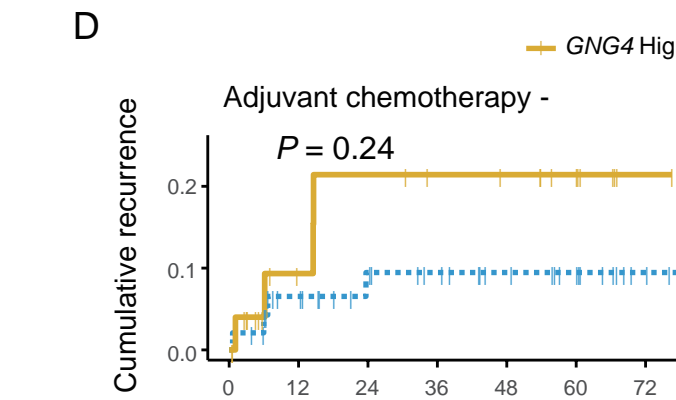
Number at risk

	0	12	24	36	48	60	72
GNG4 Low	103	83	75	69	57	45	22
GNG4 High	77	56	43	36	31	20	6



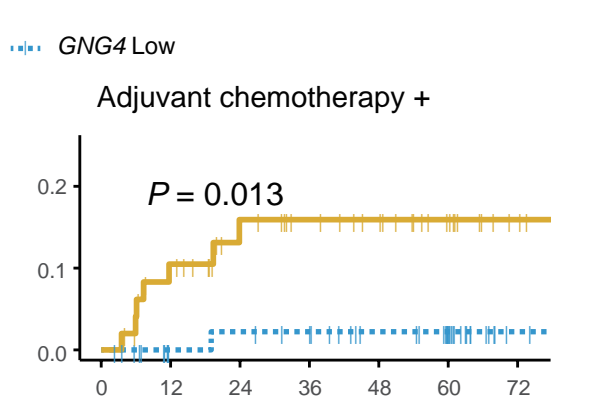
Number at risk

	0	12	24	36	48	60	72
GNG4 Low	103	83	75	69	57	45	22
GNG4 High	77	56	43	36	31	20	6



Number at risk

	0	12	24	36	48	60	72
GNG4 Low	48	38	31	27	22	18	10
GNG4 High	27	15	13	11	10	7	1



Number at risk

	0	12	24	36	48	60	72
GNG4 Low	55	45	44	42	35	27	12
GNG4 High	50	41	30	25	21	13	5

Figure 3. High GNG4 expression correlated with the poor survival of patients with gastric cancer. Kaplan-Meier plot of overall survival for the whole cohort (N = 300) stratified by GNG4 expression (A) and recurrence-free survival for stage II and III cohort (n = 180). Cumulative incidence stratified according to the first site of recurrence (C). Kaplan-Meier plot assessing the implications of GNG4 expression on cumulative recurrence as liver metastasis, stratified by with or without administration of adjuvant therapy (D).

Supplemental Table 2. Association between high/low *GNG4* mRNA levels and clinicopathological factors of 180 patients of stage II/III patients.

Variables	Low <i>GNG4</i> n = 103	High <i>GNG4</i> n = 77	<i>P</i>
Age (mean (SD))	66.55 (11.33)	67.10 (10.61)	0.741
Sex; Male/Female (%)	74/29 (71.8/28.2)	55/22 (71.4/28.6)	1
CA19-9 (median [IQR])	13.0 [7.0, 26.0]	16.0 [6.0, 35.0]	0.483
CEA (median [IQR])	2.30 [1.50, 3.58]	2.80 [1.70, 4.73]	0.050
Tumor diameter (mm, mean (SD))	58.90 (29.97)	52.34 (29.60)	0.146
Tumor location (n, %)			0.978
Diffuse	4 (3.9)	3 (3.9)	
Upper third	34 (33.0)	24 (31.2)	
Middle third	37 (35.9)	27 (35.1)	
Lower third	28 (27.2)	23 (29.9)	
Macroscopic type (n, %)			1
Bormann type 4 or 5	11 (10.7)	9 (11.7)	
Others	92 (89.3)	68 (88.3)	
Differentiation (n, %)			0.087
Undifferentiated	70 (68.0)	42 (54.5)	
Differentiated	33 (32.0)	35 (45.5)	
Vessel invasion (n, %)			0.434
Absent	69 (67.0)	47 (61.0)	
Present	34 (33.0)	30 (39.0)	
Infiltrative growth type (n, %)			0.729
Expansive growth	27 (26.2)	18 (23.4)	
Invasive growth	76 (73.8)	59 (76.6)	
Tumor depth (UICC 7th) (n, %)			0.365
T3	59 (57.3)	38 (49.4)	
T4	44 (42.7)	39 (50.6)	
Lymphatic involvement (n, %)			0.856
Absent	23 (22.3)	16 (20.8)	
Present	80 (77.7)	61 (79.2)	
UICC Stage 7th (n, %)			1
Stage II	41 (39.8)	30 (39.0)	
Stage III	62 (60.2)	47 (61.0)	

IQR, inter quartile range; CA19-9, carbohydrate antigen 19-9; CEA, carcinoembryonic antigen; UICC, Union for International Cancer Control

Table 2. Predictive factors of liver recurrence for 180 patients with R0 resection of gastric cancer

Variables	Univariate				Multivariate			
	HR	95%CI Lower	95%CI Upper	<i>P</i>	HR	95%CI Lower	95%CI Upper	<i>P</i>
Age >65 years old	1.59	0.551	4.57	0.380				
Male sex	2.84	0.645	12.5	0.118				
Tumor size >50 mm	0.96	0.361	2.57	0.939				
Tumor Location (lower third)	1.62	0.605	4.36	0.343				
CA19-9 >37 IU/mL	2.96	1.07	8.15	0.049*	2.27	0.813	6.34	0.118
CEA >5 ng/mL	1.84	0.593	5.71	0.317				
Differentiated	2.59	0.943	7.14	0.059				
Invasive growth type	0.12	0.016	0.93	0.006*	0.141	0.018	1.08	0.059
Vessel involvement	5.58	0.737	42.3	0.032*	3.77	0.486	29.3	0.204
Lymph node metastasis	0.98	0.366	2.64	0.972				
Tumor depth T4 (vs T1-3)	2.35	0.534	10.4	0.210				
UICC Stage III	1.00	0.370	2.68	0.993				
High <i>GNG4</i>	3.34	1.16	9.628	0.019	3.471	1.201	10.027	0.022*

*Statistically significant ($P < 0.05$); CI, confidence interval; CEA, carcinoembryonic antigen; CA19-9, carbohydrate antigen 19-9; UICC, Union for International Cancer Control

The oncogenic phenotype of GNG4 in gastric cancer cells

To see *GNG4* functional aspects, we modulated *GNG4* expression. We established a stable *GNG4* knockout (d*GNG4*) MKN1 cell line applying the CRISPR/Cas9 system. The knockout of *GNG4* was confirmed using an amplicon-cleavage assay and immunoblotting (Supplemental Figure 2A and 2B, respectively). Decreased cell proliferation was observed by knockout of *GNG4* (Figure 4A), and forced expression of *GNG4* increased MKN1 cell proliferation (Figure 4B). The phase of d*GNG4*-MKN1's cell cycle appeared to have arrested in S/G2 (Figure 4C and Supplemental Figure 2C). In search of the reason for the cell-cycle arrest, we tested whether *GNG4* plays a role in maintaining mitochondrial membrane polarity to help cancer cells to survive. The cell proportion of which mitochondrial membrane depolarized increased in the knockout of *GNG4* (Figure 4D and Supplemental Figure 2D) and the inverse effect was observed by forced expression of *GNG4* (Figure 4E, and Supplemental Figure 2E). To test the possible role of chemotherapy-resistant, we performed a drug-sensitivity test. Knockout of *GNG4* modestly increased sensitivity to 5FU, although it was still statistically significant (Figure 4F). The abilities of d*GNG4*-MKN1 cells adhering to collagen I, collagen IV were significantly reduced compared with that of parent MKN1 cells (Figure 4G). We explored pathways involve

GNG4 and genes interacting with *GNG4*. Extracellular signal-regulated kinase 1/2 (ERK1/2) was markedly, and Akt was moderately dephosphorylated in d*GNG4*-MKN1 cells compared with parent MKN1 cells (Figure 4H).

Next, we employed a subcutaneous xenograft mouse model to determine if the knockout of
5 *GNG4* influenced the formation and tumor growth *in vivo*. The tumors generated by d*GNG4*-
MKN1 cells did not grow as much as parental MKN1 cells, even stopped growing after six
weeks passed from seeding. The volumes of subcutaneous tumors ($= D \times d^2/2$) generated by
d*GNG4*-MKN1 cells were significantly smaller compared to those by parental MKN1 cells
(Figure 4I, Supplemental Figure 2F). Subsequently, we employed a xenograft model of liver
10 metastasis to determine the contribution of *GNG4* to the metastatic potential of gastric cancer
cells. Metastatic nodules in the liver were multiple 12 weeks after implantation of parental
MKN1 cells. In contrast, those of d*GNG4* cells were significantly smaller or not detected
macroscopically, or through IVIS or MRI (Figure 4J, Supplemental Figure 2G).

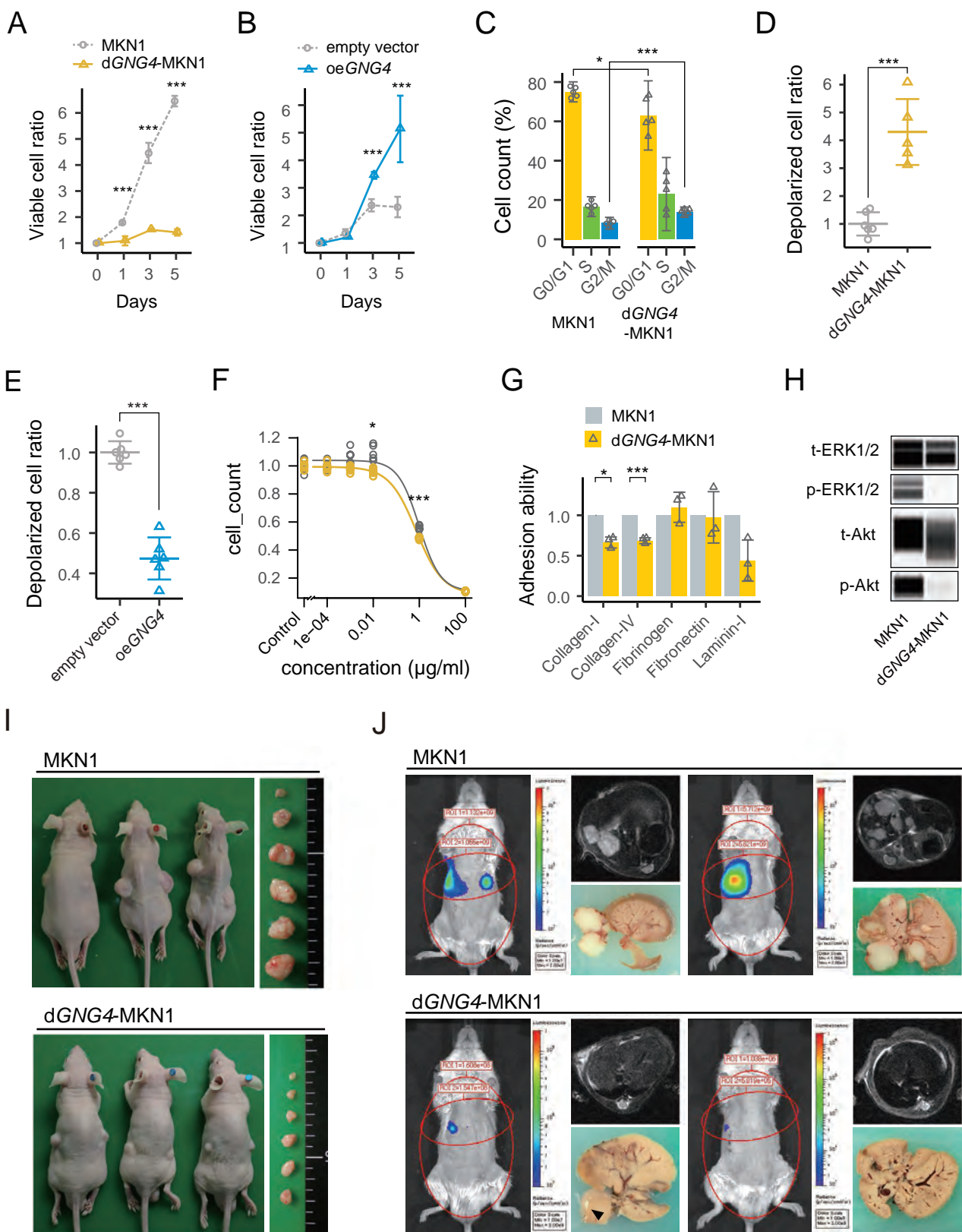
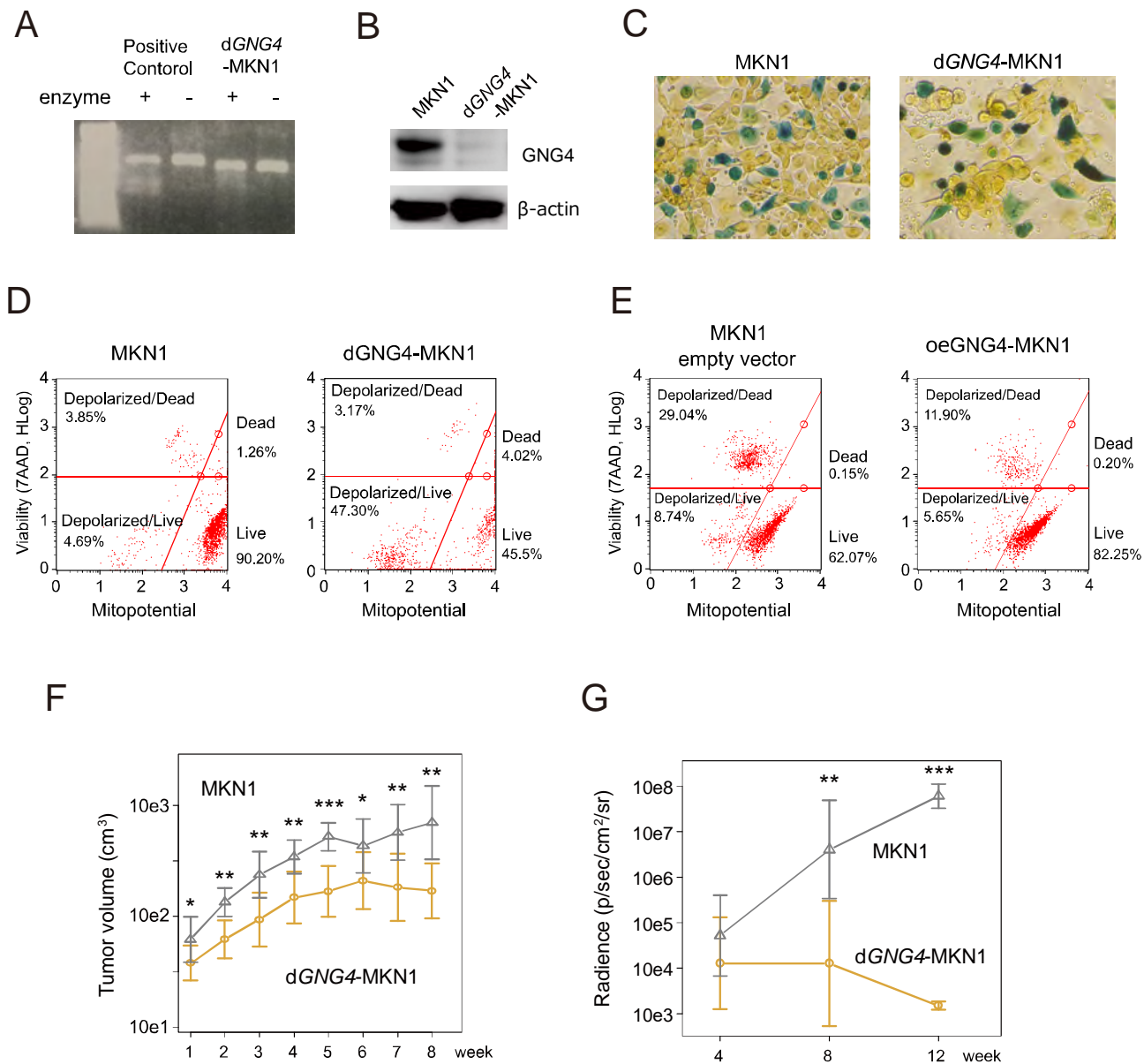


Figure 4. In vitro and in vivo functional assay for GNG4 determined to malignant phenotypes of MKN1 cell by knockout of GNG4 (dGNG4) and over-expression of GNG4 (oeGNG4). Proliferation assay between parental MKN1 and dGNG4-MKN1 (A), and oeGNG4-MKN1 (B). Cell cycle assay comparing MKN1 and dGNG4-MKN1 using colorimetric detection of the cell cycle phase (C). Mitochondrial membrane potential assays to identify enhanced apoptotic pathway between MKN1 and dGNG4-MKN1 (D), and oeGNG4-MKN1 (E). Drug sensitivity assay to 5-FU. The curve fitting was done by four-parameter log-logistic models (F) and cell adhesion assay to solid matrixes (G) comparing MKN1 and dGNG4-MKN1. Immunoblot assay comparing phosphorylation of Extracellular signal-regulated kinase 1/2 (ERK1/2), and Akt between MKN1 and dGNG4-MKN1(H). p- indicates phosphorylated; t-, total. Mouse subcutaneous xenograft model (I) and liver metastasis model (J) comparing MKN1 and dGNG4-MKN1. Tumor progression was evaluated by MRI and by In Vivo Spectrum Imaging System (IVIS). Circles on the mice indicate regions of interest. *P < 0.05, **P < 0.01, ***P < 0.001.



Supplemental Figure 2. Genome editing efficacy for knockout of GNG4, using gel electrophoresis and densitometry (A), and immunoblot analysis of GNG4 expression (B). Colorimetric assay for detecting cell cycle phase (C). Flow cytometry detecting mitochondrial membrane depolarization (D). Tumor burden comparison between MKN1 and dGNG4-MKN1 in mouse subcutaneous xenograft model (E) and liver metastasis model (F). *P < 0.05, **P < 0.01, ***P < 0.001.

DISCUSSION

The outcome of gastric cancer remains dismal, and the diagnostic and therapeutic strategy

5 for liver metastasis has not developed substantially (Allemani et al., 2018; Ferlay et al., 2019;

Tan & Yeoh, 2015). The fact that the liver is the most common site for hematogenous metastasis

inspired us to hypothesize that the same gene would overexpress at primary cancer as the metastatic liver foci. Here we identify *GNG4* as a candidate driver gene that promotes liver metastasis in patients with gastric cancer. Transcriptome analyses uncovered that *GNG4* was distinctly overexpressed in primary tumor tissues of patients with confined to synchronous liver metastases. Subsequent qRT-PCR analysis of 300 gastric cancer tissues exhibited that higher *GNG4* expression correlates with a worse prognosis, particularly with the recurrence of liver metastasis. *GNG4* expression in a gastric cancer cell line was associated with malignant phenotypes, especially the formation of liver metastases.

The findings of our epidemiological data proved our expectation for *GNG4* as a biomarker in gastric cancer, especially in the context of liver metastasis. Higher expression of *GNG4* in primary gastric cancer tissue was significantly associated with poor prognosis caused mainly by liver recurrence. Additionally, the high *GNG4* group had less benefit from adjuvant chemotherapy aimed at preventing liver recurrence. The drug sensitivity test proved that *GNG4* is not only a candidate biomarker predicting resistance to chemotherapy, but may also have functional aspects of resistance to 5FU, a representative of pyrimidine drugs.

This study shows that *GNG4* is upregulated in malignant phenotypes, promoting cell survival and cell adhesion. This oncogenic phenotype of *GNG4* was much more apparent in a liver-metastatic mice model than a subcutaneous model. In the literature, *GNG4* is a member of the G protein γ family, which forms heterotrimers with the α and β subunits of G proteins. G proteins typically act as switches that transduce signals from upstream-acting G protein-coupled receptors (Crespo et al., 1994; Garcia-Regalado et al., 2008; Khan et al., 2013; Zhang et al., 2010). It is also reported that GNB1 and GNG2, family members of *GNG4*, independently maintain mitochondrial membrane polarity to evade apoptosis. We also detected *GNG4*-associated phosphorylation of ERK1/2, Akt, which are well-known oncogenic pathways promoting cell cycle, cell proliferation, and cell adhesion (Cheng et al., 2005; Garcia-Regalado et al., 2008; Khan et al., 2013). However, we are still unaware of published studies implicating *GNG4* as an oncogene.

Identification of *GNG4* as a candidate gene that accounts for liver metastases in gastric cancer can lead to a novel therapeutic or diagnostic strategy. If we recognize the risk of liver metastasis by testing on gastric cancer tissues, we may develop better disease monitoring weighted to the liver by MRI (Borggreve et al., 2019). Of note, most of the liver recurrence in this study occurred within six months to one year after surgery, implying the existence of subclinical dissemination to the liver at the time of surgery. Identifying such a cohort with higher risk may enable us to uncover further benefits from perioperative therapy. In particular, we may also seek a better chemotherapeutic approach targeted on liver metastasis through a clinical trial since some regimen reportedly may control hematogenous metastasis, rather than peritoneal metastasis, which is considered to have been controlled to some extent by regimens comprising fluorinated pyrimidines (Koizumi et al., 2008; Noh et al., 2014; Sakuramoto et al., 2007; Sasako et al., 2011). Moreover, discovering genes specific to liver metastasis, such as *GNG4*, may also help us to develop molecular-targeted drugs.

The present study has certain limitations. First, our *GNG4* mRNA expression data were retrospectively acquired, and extensive cohort prospective studies are required to validate this gene as a biomarker. Second, we may have to investigate the mechanisms of *GNG4*-mediated liver metastasis further. It may be proven through an organoid model of the sinusoid epithelium, for instance. Third, we have not shown how much specific *GNG4* drives liver metastases *in vivo* yet. Further studies using an orthotopic model may be needed to prove if *GNG4* expression affect organ directionality for cancer cells to metastasize (Busuttil et al., 2018).

Our results showed that higher *GNG4* expression correlated poorer prognosis, especially in the context of liver metastasis. We also proved that *GNG4* likely plays roles in promoting the cell cycle, evading apoptosis, and promoting tumor cell adhesion. *GNG4* may, therefore, represent a specific biomarker for detecting and putative therapeutic target for liver metastasis in patients with gastric cancer.

REFERENCES

- Allemani, C., Matsuda, T., Di Carlo, V., Harewood, R., Matz, M., Niksic, M., Bonaventure, A., Valkov, M., Johnson, C. J., Esteve, J., Ogunbiyi, O. J., Azevedo, E. S. G., Chen, W. Q., Eser, S., Engholm, G., Stiller, C. A., Monnereau, A., Woods, R. R., Visser, O., Lim, G. H., Aitken, J., Weir, H. K., & Coleman, M. P. (2018). Global surveillance of trends in cancer survival 2000-14 (CONCORD-3): analysis of individual records for 37 513 025 patients diagnosed with one of 18 cancers from 322 population-based registries in 71 countries. *Lancet*, *391*(10125), 1023-1075. [https://doi.org/10.1016/s0140-6736\(17\)33326-3](https://doi.org/10.1016/s0140-6736(17)33326-3)
- Amikura, K., Kobari, M., & Matsuno, S. (1995). The time of occurrence of liver metastasis in carcinoma of the pancreas. *Int J Pancreatol*, *17*(2), 139-146. <https://doi.org/10.1007/bf02788531>
- Bang, Y. J., Van Cutsem, E., Feyereislova, A., Chung, H. C., Shen, L., Sawaki, A., Lordick, F., Ohtsu, A., Omuro, Y., Satoh, T., Aprile, G., Kulikov, E., Hill, J., Lehle, M., Ruschoff, J., & Kang, Y. K. (2010). Trastuzumab in combination with chemotherapy versus chemotherapy alone for treatment of HER2-positive advanced gastric or gastro-oesophageal junction cancer (ToGA): a phase 3, open-label, randomised controlled trial. *Lancet*, *376*(9742), 687-697. [https://doi.org/10.1016/s0140-6736\(10\)61121-x](https://doi.org/10.1016/s0140-6736(10)61121-x)
- Borggreve, A. S., Goense, L., Brenkman, H. J. F., Mook, S., Meijer, G. J., Wessels, F. J., Verheij, M., Jansen, E. P. M., van Hilleegersberg, R., van Rossum, P. S. N., & Ruurda, J. P. (2019). Imaging strategies in the management of gastric cancer: current role and future potential of MRI. *Br J Radiol*, *92*(1097), 20181044. <https://doi.org/10.1259/bjr.20181044>
- Brosnan, J. A., & Iacobuzio-Donahue, C. A. (2012). A new branch on the tree: next-generation sequencing in the study of cancer evolution. *Semin Cell Dev Biol*, *23*(2), 237-242. <https://doi.org/10.1016/j.semcdb.2011.12.008>
- Busuttill, R. A., Liu, D. S., Di Costanzo, N., Schroder, J., Mitchell, C., & Boussioutas, A. (2018). An orthotopic mouse model of gastric cancer invasion and metastasis. *Sci Rep*, *8*(1), 825. <https://doi.org/10.1038/s41598-017-19025-y>
- Cheng, J. Q., Lindsley, C. W., Cheng, G. Z., Yang, H., & Nicosia, S. V. (2005). The Akt/PKB pathway: molecular target for cancer drug discovery. *Oncogene*, *24*(50), 7482-7492. <https://doi.org/10.1038/sj.onc.1209088>
- Crespo, P., Xu, N., Simonds, W. F., & Gutkind, J. S. (1994). Ras-dependent activation of MAP kinase pathway mediated by G-protein beta gamma subunits. *Nature*, *369*(6479), 418-420. <https://doi.org/10.1038/369418a0>
- Cristescu, R., Lee, J., Nebozhyn, M., Kim, K. M., Ting, J. C., Wong, S. S., Liu, J., Yue, Y. G., Wang, J., Yu, K., Ye, X. S., Do, I. G., Liu, S., Gong, L., Fu, J., Jin, J. G., Choi, M. G., Sohn, T. S., Lee, J. H., Bae, J. M., Kim, S. T., Park, S. H., Sohn, I., Jung, S. H., Tan, P., Chen, R., Hardwick, J., Kang, W. K., Ayers, M., Hongyue, D., Reinhard, C., Loboda, A., Kim, S., & Aggarwal, A. (2015). Molecular analysis of gastric cancer identifies subtypes associated with distinct clinical outcomes. *Nat Med*, *21*(5), 449-456. <https://doi.org/10.1038/nm.3850>
- de Groot, A. E., Roy, S., Brown, J. S., Pienta, K. J., & Amend, S. R. (2017). Revisiting Seed and Soil: Examining the Primary Tumor and Cancer Cell Foraging in Metastasis. *Mol Cancer Res*, *15*(4), 361-370. <https://doi.org/10.1158/1541-7786.mcr-16-0436>
- Ferlay, J., Colombet, M., Soerjomataram, I., Mathers, C., Parkin, D. M., Pineros, M., Znaor, A., & Bray, F. (2019). Estimating the global cancer incidence and mortality in 2018: GLOBOCAN sources and methods. *Int J Cancer*, *144*(8), 1941-1953. <https://doi.org/10.1002/ijc.31937>
- Garcia-Regalado, A., Guzman-Hernandez, M. L., Ramirez-Rangel, I., Robles-Molina, E., Balla, T., Vazquez-Prado, J., & Reyes-Cruz, G. (2008). G protein-coupled receptor-promoted trafficking of Gbeta1gamma2 leads to AKT activation at endosomes via a mechanism mediated by Gbeta1gamma2-Rab11a interaction. *Mol Biol Cell*, *19*(10), 4188-4200. <https://doi.org/10.1091/mbc.E07-10-1089>
- Hiki, N., Katai, H., Mizusawa, J., Nakamura, K., Nakamori, M., Yoshikawa, T., Kojima, K., Imamoto, H., Ninomiya, M., Kitano, S., & Terashima, M. (2018). Long-term outcomes of laparoscopy-assisted distal gastrectomy with suprapancreatic nodal dissection for clinical stage I gastric cancer: a multicenter phase II trial (JCOG0703). *Gastric Cancer*, *21*(1), 155-161. <https://doi.org/10.1007/s10120-016-0687-0>
- Ishigami, H., Fujiwara, Y., Fukushima, R., Nashimoto, A., Yabusaki, H., Imano, M., Imamoto, H., Kodera, Y., Uenosono, Y., Amagai, K., Kadowaki, S., Miwa, H., Yamaguchi, H., Yamaguchi, T., Miyaji, T., & Kitayama, J. (2018). Phase III Trial Comparing Intraperitoneal and Intravenous Paclitaxel Plus S-1 Versus Cisplatin Plus S-1 in Patients With Gastric Cancer With Peritoneal Metastasis: PHOENIX-GC Trial. *J Clin Oncol*, *36*(19), 1922-1929. <https://doi.org/10.1200/jco.2018.77.8613>

- 5 Kanda, M., Shimizu, D., Tanaka, H., Tanaka, C., Kobayashi, D., Hayashi, M., Iwata, N., Niwa, Y., Yamada, S., Fujii, T., Sugimoto, H., Murotani, K., Fujiwara, M., & Kodera, Y. (2016). Significance of SYT8 For the Detection, Prediction, and Treatment of Peritoneal Metastasis From Gastric Cancer. *Ann Surg*, 267, 495–503. <https://doi.org/10.1097/sla.0000000000002096>
- 10 Kanda, M., Tanaka, C., Kobayashi, D., Tanaka, H., Shimizu, D., Shibata, M., Takami, H., Hayashi, M., Iwata, N., Niwa, Y., Yamada, S., Fujii, T., Nakayama, G., Fujiwara, M., & Kodera, Y. (2016). Epigenetic suppression of the immunoregulator MZB1 is associated with the malignant phenotype of gastric cancer. *Int J Cancer*, 139(10), 2290–2298. <https://doi.org/10.1002/ijc.30286>
- 15 Kanda, M., Tanaka, H., Shimizu, D., Miwa, T., Umeda, S., Tanaka, C., Kobayashi, D., Hattori, N., Suenaga, M., Hayashi, M., Iwata, N., Yamada, S., Fujiwara, M., & Kodera, Y. (2018). SYT7 acts as a driver of hepatic metastasis formation of gastric cancer cells. *Oncogene*, 37, 5355–5366. <https://doi.org/10.1038/s41388-018-0335-8>
- 20 Kang, Y. K., Boku, N., Satoh, T., Ryu, M. H., Chao, Y., Kato, K., Chung, H. C., Chen, J. S., Muro, K., Kang, W. K., Yeh, K. H., Yoshikawa, T., Oh, S. C., Bai, L. Y., Tamura, T., Lee, K. W., Hamamoto, Y., Kim, J. G., Chin, K., Oh, D. Y., Minashi, K., Cho, J. Y., Tsuda, M., & Chen, L. T. (2017). Nivolumab in patients with advanced gastric or gastro-oesophageal junction cancer refractory to, or intolerant of, at least two previous chemotherapy regimens (ONO-4538-12, ATTRACTION-2): a randomised, double-blind, placebo-controlled, phase 3 trial. *Lancet*, 390(10111), 2461–2471. [https://doi.org/10.1016/s0140-6736\(17\)31827-5](https://doi.org/10.1016/s0140-6736(17)31827-5)
- 25 Khan, S. M., Sleno, R., Gora, S., Zylbergold, P., Laverdure, J. P., Labbe, J. C., Miller, G. J., & Hebert, T. E. (2013). The expanding roles of Gbetagamma subunits in G protein-coupled receptor signaling and drug action. *Pharmacol Rev*, 65(2), 545–577. <https://doi.org/10.1124/pr.111.005603>
- 30 Kim, R., Schell, M. J., Teer, J. K., Greenawalt, D. M., Yang, M., & Yeatman, T. J. (2015). Co-evolution of somatic variation in primary and metastatic colorectal cancer may expand biopsy indications in the molecular era. *PLoS One*, 10(5), e0126670. <https://doi.org/10.1371/journal.pone.0126670>
- 35 Kodera, Y., Fujitani, K., Fukushima, N., Ito, S., Muro, K., Ohashi, N., Yoshikawa, T., Kobayashi, D., Tanaka, C., & Fujiwara, M. (2014). Surgical resection of hepatic metastasis from gastric cancer: a review and new recommendation in the Japanese gastric cancer treatment guidelines. *Gastric Cancer*, 17(2), 206–212. <https://doi.org/10.1007/s10120-013-0299-x>
- 40 Koizumi, W., Narahara, H., Hara, T., Takagane, A., Akiya, T., Takagi, M., Miyashita, K., Nishizaki, T., Kobayashi, O., Takiyama, W., Toh, Y., Nagaie, T., Takagi, S., Yamamura, Y., Yanaoka, K., Orita, H., & Takeuchi, M. (2008). S-1 plus cisplatin versus S-1 alone for first-line treatment of advanced gastric cancer (SPIRITS trial): a phase III trial. *Lancet Oncol*, 9(3), 215–221. [https://doi.org/10.1016/s1470-2045\(08\)70035-4](https://doi.org/10.1016/s1470-2045(08)70035-4)
- 45 Maina, E. N., Morris, M. R., Zatyka, M., Raval, R. R., Banks, R. E., Richards, F. M., Johnson, C. M., & Maher, E. R. (2005). Identification of novel VHL target genes and relationship to hypoxic response pathways. *Oncogene*, 24(28), 4549–4558. <https://doi.org/10.1038/sj.onc.1208649>
- 50 Markar, S. R., Mikhail, S., Malietzis, G., Athanasiou, T., Mariette, C., Sasako, M., & Hanna, G. B. (2016). Influence of Surgical Resection of Hepatic Metastases From Gastric Adenocarcinoma on Long-term Survival: Systematic Review and Pooled Analysis. *Ann Surg*, 263(6), 1092–1101. <https://doi.org/10.1097/sla.0000000000001542>
- 55 Mathot, L., & Stenninger, J. (2012). Behavior of seeds and soil in the mechanism of metastasis: a deeper understanding. *Cancer Sci*, 103(4), 626–631. <https://doi.org/10.1111/j.1349-7006.2011.02195.x>
- 60 Menard, S., Pupa, S. M., Campiglio, M., & Tagliabue, E. (2003). Biologic and therapeutic role of HER2 in cancer. *Oncogene*, 22(42), 6570–6578. <https://doi.org/10.1038/sj.onc.1206779>
- Mendoza, M., & Khanna, C. (2009). Revisiting the seed and soil in cancer metastasis. *Int J Biochem Cell Biol*, 41(7), 1452–1462. <https://doi.org/10.1016/j.biocel.2009.01.015>
- Miwa, T., Kanda, M., Tanaka, H., Tanaka, C., Kobayashi, D., Umeda, S., Iwata, N., Hayashi, M., Yamada, S., Fujii, T., Fujiwara, M., & Kodera, Y. (2017). FBXO50 Enhances the Malignant Behavior of Gastric Cancer Cells. *Ann Surg Oncol*. <https://doi.org/10.1245/s10434-017-5882-7>
- Miwa, T., Kanda, M., Umeda, S., Tanaka, H., Shimizu, D., Tanaka, C., Kobayashi, D., Hayashi, M., Yamada, S., Nakayama, G., Koike, M., & Kodera, Y. (2019). Establishment of Peritoneal and Hepatic Metastasis Mouse Xenograft Models Using Gastric Cancer Cell Lines. *In Vivo*, 33(6), 1785–1792. <https://doi.org/10.21873/invivo.11669>
- Noh, S. H., Park, S. R., Yang, H. K., Chung, H. C., Chung, I. J., Kim, S. W., Kim, H. H., Choi, J. H., Kim, H. K., Yu, W., Lee, J. I., Shin, D. B., Ji, J., Chen, J. S., Lim, Y., Ha, S., & Bang, Y. J. (2014). Adjuvant capecitabine plus oxaliplatin for gastric cancer after D2 gastrectomy (CLASSIC): 5-year follow-up of an open-label, randomised phase 3 trial. *Lancet Oncol*, 15(12), 1389–1396.

- [https://doi.org/10.1016/s1470-2045\(14\)70473-5](https://doi.org/10.1016/s1470-2045(14)70473-5)
- 5 Oya, H., Kanda, M., Koike, M., Iwata, N., Niwa, Y., Shimizu, D., Takami, H., Sueoka, S., Hashimoto, R., Ezaka, K., Nomoto, S., Yamada, S., Fujii, T., Nakayama, G., Sugimoto, H., Fujiwara, M., & Kodera, Y. (2016). Detection of serum melanoma-associated antigen D4 in patients with squamous cell carcinoma of the esophagus. *Dis Esophagus*, 29(6), 663-669. <https://doi.org/10.1111/dote.12373>
- 10 Pal, J., Patil, V., Mondal, B., Shukla, S., Hegde, A. S., Arivazhagan, A., Santosh, V., & Somasundaram, K. (2016). Epigenetically silenced GNG4 inhibits SDF1alpha/CXCR4 signaling in mesenchymal glioblastoma. *Genes Cancer*, 7(3-4), 136-147. <https://doi.org/10.18632/genesandcancer.105>
- 15 Sakamoto, H., Attiyeh, M. A., Gerold, J. M., Makohon-Moore, A. P., Hayashi, A., Hong, J., Kappagantula, R., Zhang, L., Melchor, J. P., Reiter, J. G., Heyde, A., Bielski, C. M., Penson, A. V., Gönen, M., Chakravarty, D., O'Reilly, E. M., Wood, L. D., Hruban, R. H., Nowak, M. A., Socci, N. D., Taylor, B. S., & Iacobuzio-Donahue, C. A. (2020). The Evolutionary Origins of Recurrent Pancreatic Cancer. *Cancer Discov*. <https://doi.org/10.1158/2159-8290.cd-19-1508>
- 20 Sakuramoto, S., Sasako, M., Yamaguchi, T., Kinoshita, T., Fujii, M., Nashimoto, A., Furukawa, H., Nakajima, T., Ohashi, Y., Imamura, H., Higashino, M., Yamamura, Y., Kurita, A., & Arai, K. (2007). Adjuvant chemotherapy for gastric cancer with S-1, an oral fluoropyrimidine. *N Engl J Med*, 357(18), 1810-1820. <https://doi.org/10.1056/NEJMoa072252>
- 25 Sasako, M., Sakuramoto, S., Katai, H., Kinoshita, T., Furukawa, H., Yamaguchi, T., Nashimoto, A., Fujii, M., Nakajima, T., & Ohashi, Y. (2011). Five-year outcomes of a randomized phase III trial comparing adjuvant chemotherapy with S-1 versus surgery alone in stage II or III gastric cancer. *J Clin Oncol*, 29(33), 4387-4393. <https://doi.org/10.1200/JCO.2011.36.5908>
- 30 Shibata, M., Kanda, M., Tanaka, H., Umeda, S., Miwa, T., Shimizu, D., Hayashi, M., Inaishi, T., Miyajima, N., Adachi, Y., Takano, Y., Nakanishi, K., Takeuchi, D., Noda, S., Kodera, Y., & Kikumori, T. (2017). Overexpression of Derlin 3 is associated with malignant phenotype of breast cancer cells. *Oncol Rep*, 38(3), 1760-1766. <https://doi.org/10.3892/or.2017.5800>
- 35 Shimizu, D., Kanda, M., & Kodera, Y. (2018). Review of recent molecular landscape knowledge of gastric cancer. *Histol Histopathol*, 33(1), 11-26. <https://doi.org/10.14670/hh-11-898>
- 40 Shitara, K., Ozguroglu, M., Bang, Y. J., Di Bartolomeo, M., Mandala, M., Ryu, M. H., Fornaro, L., Olesinski, T., Caglevic, C., Chung, H. C., Muro, K., Goekkurt, E., Mansoor, W., McDermott, R. S., Shacham-Shmueli, E., Chen, X., Mayo, C., Kang, S. P., Ohtsu, A., & Fuchs, C. S. (2018). Pembrolizumab versus paclitaxel for previously treated, advanced gastric or gastro-oesophageal junction cancer (KEYNOTE-061): a randomised, open-label, controlled, phase 3 trial. *Lancet*, 392(10142), 123-133. [https://doi.org/10.1016/s0140-6736\(18\)31257-1](https://doi.org/10.1016/s0140-6736(18)31257-1)
- 45 Slamon, D. J., Leyland-Jones, B., Shak, S., Fuchs, H., Paton, V., Bajamonde, A., Fleming, T., Eiermann, W., Wolter, J., Pegram, M., Baselga, J., & Norton, L. (2001). Use of chemotherapy plus a monoclonal antibody against HER2 for metastatic breast cancer that overexpresses HER2. *N Engl J Med*, 344(11), 783-792. <https://doi.org/10.1056/nejm200103153441101>
- 50 Szasz, A. M., Lanczky, A., Nagy, A., Forster, S., Hark, K., Green, J. E., Boussioutas, A., Busuttill, R., Szabo, A., & Gyorffy, B. (2016). Cross-validation of survival associated biomarkers in gastric cancer using transcriptomic data of 1,065 patients. *Oncotarget*, 7(31), 49322-49333. <https://doi.org/10.18632/oncotarget.10337>
- 55 Takahashi, N., Kanda, M., Yoshikawa, T., Takiguchi, N., Fujitani, K., Miyamoto, K., Ito, Y., Takayama, O., Imano, M., Mitsumori, N., Sakamoto, J., Morita, S., & Kodera, Y. (2018). A randomized phase II multicenter trial to explore efficacy of weekly intraperitoneal in comparison with intravenous paclitaxel administered immediately after gastrectomy to the patients with high risk of peritoneal recurrence: final results of the INPACT trial. *Gastric Cancer*, 21(6), 1014-1023. <https://doi.org/10.1007/s10120-018-0817-y>
- 60 Tan, P., & Yeoh, K. G. (2015). Genetics and Molecular Pathogenesis of Gastric Adenocarcinoma. *Gastroenterology*, 149(5), 1153-1162 e1153. <https://doi.org/10.1053/j.gastro.2015.05.059>
- Tanaka, H., Kanda, M., Miwa, T., Tanaka, C., Kobayashi, D., Umeda, S., Shibata, M., Suenaga, M., Hattori, N., Hayashi, M., Iwata, N., Yamada, S., Nakayama, G., Fujiwara, M., & Kodera, Y. (2018). Pattern-Specific Transcriptomics Identifies ASGR2 as a Predictor of Hematogenous Recurrence of Gastric Cancer. *Mol Cancer Res*, 16(9), 1420-1429. <https://doi.org/10.1158/1541-7786.mcr-17-0467>
- Tanaka, H., Kanda, M., Shimizu, D., Tanaka, C., Kobayashi, D., Hayashi, M., Iwata, N., Yamada, S., Fujii, T., Nakayama, G., Sugimoto, H., Fujiwara, M., Niwa, Y., & Kodera, Y. (2016). FAM46C Serves as a Predictor of Hepatic Recurrence in Patients with Resectable Gastric Cancer. *Ann Surg Oncol*, 24(11), 3438-3445. <https://doi.org/10.1245/s10434-016-5636-y>
- Van Cutsem, E., Sagaert, X., Topal, B., Haustermans, K., & Prenen, H. (2016). Gastric cancer. *Lancet*,

- 388(10060), 2654-2664. [https://doi.org/10.1016/s0140-6736\(16\)30354-3](https://doi.org/10.1016/s0140-6736(16)30354-3)
- Zhang, J., Liu, W., Liu, J., Xiao, W., Liu, L., Jiang, C., Sun, X., Liu, P., Zhu, Y., Zhang, C., & Chen, Q. (2010). G-protein beta2 subunit interacts with mitofusin 1 to regulate mitochondrial fusion. *Nat Commun*, *1*, 101. <https://doi.org/10.1038/ncomms1099>
- 5 Zhang, Y., Fang, L., Zang, Y., & Xu, Z. (2018). Identification of Core Genes and Key Pathways via Integrated Analysis of Gene Expression and DNA Methylation Profiles in Bladder Cancer. *Med Sci Monit*, *24*(NA), 3024-3033. <https://doi.org/10.12659/msm.909514>