

Detection of neutralising antibodies to SARS coronavirus 2 to determine population exposure in Scottish blood donors between March and May 2020

Thompson, CP.^{1,2*}, Grayson, N.^{2,3,5}, Paton, R.S.^{1,2}, Bolton J.^{1,2} Lourenco, J.^{1,2}, Penman, BS⁴,
Lee, L.^{2,5}, Odon, V.^{2,5}, Mongkolsapaya, J.⁶, Chinnakannan, S.^{2,5}, Dejnirattisai, W.⁶, Edmans,
5 M.^{2,5}, Fyfe, A.^{1,2}, Imlach C.⁷, Kooblall, K.⁸, Lim, N.^{2,3}, Liu, C.⁶, Lopez-Camacho, C.⁶,
McInally C.⁷, McNaughton, A. L.^{2,5} Ramamurthy,N.^{2,5}, Ratcliff, J.^{2,5}, Supasa, P.⁶, Sampson
O^{1,2}, Wang, B.⁶, Mentzer, A.⁹, Turner, M.⁷, ¹⁰Semple, M.G., ¹¹Baillie JK, ISARIC4C
Investigators, Harvala, H.¹², Screaton, G.R.⁶, Temperton, N.¹³, Klenerman, P.^{2,5*}, Jarvis,
L.M.⁷, Gupta, S.^{1,2*}, Simmonds, P.^{2,5*}

10

¹Department of Zoology, University of Oxford, Oxford, OX1 3SY, UK; ²Peter Medawar Building for Pathogen Research, South Parks Road, Oxford OX1 3SY; ³Department of Paediatric Medicine, University of Oxford, University of Oxford, Oxford, OX1 3SY, UK; ⁴Zeeman Institute for Systems Biology and Infectious Disease Epidemiology Research,
15 School of Life Sciences, Gibbet Hill Campus, The University of Warwick, Coventry, CV4 7AL; ⁵Nuffield Department of Medicine, University of Oxford, Oxford, UK; ⁶Wellcome Centre for Human Genetics, Nuffield Department of Medicine, University of Oxford, Oxford, OX3 7BN, UK; ⁷National Microbiology Reference Unit, Scottish National Blood Transfusion Service, Edinburgh, UK; ⁸Oxford Centre for Diabetes, Endocrinology and
20 Metabolism, Churchill Hospital, University of Oxford, Oxford, OX3 7LE, UK; ⁹Wellcome Trust Centre for Human Genetics, University of Oxford, Roosevelt Drive, Oxford, OX3 7BN, UK; ¹⁰Health Protection Unit in Emerging & Zoonotic Infection, Faculty of Health and Life Sciences, University of Liverpool; ¹¹NIHR Health Protection Research Unit in Emerging and Zoonotic Infections, Faculty of Health and Life Sciences, University of
25 Liverpool, UK; ¹²Infection and Immunity, University College London, London, UK; ¹³Viral Pseudotype Unit, Medway School of Pharmacy, University of Kent, Chatham, ME4 4TB, UK.

30

*Corresponding authors:

Craig Thompson Email: craig.thompson@zoo.ox.ac.uk

Paul Klenerman Email: paul.klenerman@ndm.ox.ac.uk

Sunetra Gupta Email: sunetra.gupta@zoo.ox.ac.uk

NOTE: This preprint reports new research that has not been certified by peer review and should not be used to guide clinical practice.
Peter Simmonds Email: peter.simmonds@ndm.ox.ac.uk

35 **Abstract**

Background. The progression and geographical distribution of SARS coronavirus 2 (SARS-CoV-2) infection in the UK and elsewhere is unknown because typically only symptomatic individuals are diagnosed. We performed a serological study of blood donors in Scotland
40 between the 17th of March and the 18th of May to detect neutralising antibodies to SARS-CoV-2 as a marker of past infection and epidemic progression.

Aim. To determine if sera from blood bank donors can be used to track the emergence and progression of the SARS-CoV-2 epidemic.

45

Methods. A pseudotyped SARS-CoV-2 virus microneutralisation assay was used to detect neutralising antibodies to SARS-CoV-2. The study group comprised samples from 3,500 blood donors collected in Scotland between the 17th of March and 19th of May, 2020. Controls were collected from 100 donors in Scotland during 2019.

50

Results. All samples collected on the 17th March, 2020 (n=500) were negative in the pseudotyped SARS-CoV-2 virus microneutralisation assay. Neutralising antibodies were detected in 6/500 donors from the 23th-26th of March. The number of samples containing neutralising antibodies did not significantly rise after the 5th-6th April until the end of the
55 study on the 18th of May. We find that infections are concentrated in certain postcodes indicating that outbreaks of infection are extremely localised. In contrast, other areas remain comparatively untouched by the epidemic.

Conclusion. These data indicate that sero-surveys of blood banks can serve as a useful tool
60 for tracking the emergence and progression of an epidemic like the current SARS-CoV-2 outbreak.

65

Conflict of interest statement. The authors declare no conflict of interest

70

Funding statement. This work was supported by the Georg & Emily Opel Foundation. This work was supported by the Medical Research Council [grant number MC_PC_19059]. National Institute for Health Research Biomedical Research Centre Funding Scheme (to G.R.S.), the Chinese Academy of Medical Sciences (CAMS) Innovation Fund for Medical Science (CIFMS), China (grant number: 2018-I2M-2-002). PK, PS and G.R.S. is supported as a Wellcome Trust Senior Investigator (grant 095541/A/11/Z; WT109965/MA). PK is an NIHR Senior Investigator. NG was supported via grant to Philip Goulder (WTIA Grant WT104748MA) and a grant to John Frater (Medical Research Council MR/L006588/1). CPT was funded by an ERC research grant ‘UNIFLUVAC’ and two MRC CiC grants (Ref: BR00140). LNL is supported by a CRUK Cancer Immunology Award (C30332/A23521) to PK. The funders played no role in the design, execution or reporting of the study. RP also supported by funds provided under Professor RW Snow’s Wellcome Trust Principal Fellowship (# 212176). ALM is funded by a NIHR Research Capability Funding grant.

75

80

85

MG Semple, P Klenerman, and P Simmonds are affiliated to the National Institute for Health Research Health Protection Research Unit (NIHR HPRU) in Emerging and Zoonotic Infections at University of Liverpool in partnership with Public Health England (PHE), in collaboration with Liverpool School of Tropical Medicine and the University of Oxford [award number NIHR200907]. The work was also supported by the NIHR Biomedical Research Centre, Oxford. The views expressed are those of the author(s) and not necessarily those of the MRC, NHS, the NIHR, the Department of Health or Public Health England.

90

Acknowledgements

95

We would like to acknowledge the help and collaboration of many SNBTS staff for provision and preparation of samples (anonymous archive and recent donation samples). We acknowledge the wider support of ISARIC4C.

100

Author's Contribution

105 Thompson, C., Chinnakannan, S., Dejnirattisai, W., Edmans, M., Fyfe, A., Kooblall, K., Lee,
L., Lim, N., Liu, C., López-Camacho, C., Mongkolsapaya, J., Odon, V., Sampson, O.,
Ramamurthy, N., Ratcliff, J., Supasa, P., Wang, B. and Mentzer, A., performed the sample
acquisition, laboratory testing and reporting of the pseudotype and ELISA testing. Imlach C.,
McInally C., Harvala, H. and Jarvis, L.M. established the sample sets, archiving and data
110 provision of the samples used in the study. Grayson, N., Lourenco, J., Penman, B.S., Semple,
M.G., Baillie JK, Bolton, J. and Paton, R.S. performed the data analysis and results
interpretation. Paton, R.S, Gupta., Thompson, C., Lourenco, J., wrote and interpreted the
seroprevalence model. Turner, M., Thompson, C., Temperton, N., Gupta, S., Klenerman, P.,
Screaton, G.R. and Simmonds, P conceived and designed the specifics of the study, the data
115 interpretation and drafting of the manuscript. All co-authors contributed to the editing and
final drafting of the manuscript and figures.

120

125

130

135

Introduction

140 SARS coronavirus 2 (SARS-CoV-2) emerged in late 2019 in Hubei province China as a
cause of respiratory disease occasionally leading to acute respiratory distress syndrome and
death (COVID-19) (1,2). On the 11th of March, the WHO declared the SARS-CoV-2
outbreak a pandemic. As of July 2020, roughly 10 million confirmed cases of COVID-19
have occurred resulting in 500,000 deaths (3). Increasing age, male gender, smoking and
comorbidities such as cardiac disease, hypertension and diabetes have been identified as risk
145 factors for severe infections (4,5).

Symptomatic individuals typically exhibit fever, cough and shortness of breath 2-14 days
after infection (6). However, an unknown proportion of individuals experience no symptoms
(7–9). Antibody responses in both symptomatic and asymptomatic individuals are detectable
150 in the blood 14 to 28 days after infection (10,11). Subsequently antibody levels drop and can
become undetectable by some antibody assays in the early convalescent phase (10,12,13)

In this study, we follow blood donors as a means of estimating population exposure from the
start of the pandemic in March through to mid-May when PCR-detected cases in the UK had
155 plateaued (14,15). Samples from donors in an age range of 18-75 years collected across
Scotland were assayed for neutralising antibody to SARS-CoV-2 using a pseudotyped SARS-
CoV-2 virus microneutralisation (pMN) assay used previously for SARS-CoV and Ebola
virus seroepidemiology purposes (16–18). The sensitivity of the neutralisation assay was
confirmed using an enzyme-immunosorbant (ELISA) assay detecting antibodies to spike
160 protein. The detection frequency of neutralising antibodies in blood donors and a discussion
of its applicability for estimating population level exposure are presented.

Methods

165 Samples

500 plasma samples collected on the 17th March, 21st-23rd March, 5th-6th April, 18th-20th
April, 2nd-4th May and 16th-18th May were analysed in the study. An additional 500 samples
from the Greater Glasgow region, collected between the 2nd-4th of May were also analysed.
170 To serve as negative controls, 100 blood donor samples were tested in parallel from the

Scottish National Blood Transfusion Service (SNBTS) anonymous archive collected between September 2018 and December 2019 (IRAS Project No. 18005), before the first reports of the spread of SARS-CoV-2 in China (1,2). Seventeen control samples from contract-traced individuals who were PCR-confirmed as SARS-CoV-2 infected were used as positive
175 controls in the study. All the individuals from whom the positive control sera samples were taken had asymptomatic SARS-CoV-2 infections and were recruited through the ISARIC WHO Clinical Characterisation Protocol UK (CCP-UK) at the discharge plus 28 day time-point. Samples were heat inactivated prior to serological testing by incubation at 56°C for 30 minutes.

180

SARS-CoV-2 pseudotype microneutralisation assay

A lentivirus-based SARS-CoV-2 pseudovirus particle was constructed displaying the full spike protein on the surface of the pseudotyped virus using a synthetic codon optimised
185 SARS-CoV-2 expression construct (Accession number: YP_009724390.1). Virus infectivity was determined by titration on HEK 293T ACE2-plasmid transfected cells as previously described (19). Neutralising antibody titres were determined by endpoint two-fold serial dilutions of test samples mixed with 10^5 relative light units (RLU) of pseudotyped virus, incubated at 37°C for two hours and then mixed with 10^4 HEK 293T ACE2-transfected cells
190 per well. Plates were incubated for 72 hours at 37°C and then cells were lysed and assayed for luciferase expression. Neutralisation titres are expressed as IC_{50} values. During the assay, plates were barcoded and controls were spaced throughout the runs. Individuals were blinded regarding the arrangement of spaced positive controls on the plates.

195

Titration

Pre-pandemic samples and samples collected on the 17th March and the 21st-23rd March were all titrated to optimise the neutralisation assay. After this point, samples were initially
200 screened for neutralisation using the highest 1:20 dilution. Dilutions of 1:20 were performed in triplicate along with virus-only, no virus and positive control wells. Samples that produced a mean RLU two standard deviations below the mean were then titrated out to obtain IC_{50} values.

205 **Enzyme-linked immunosorbent assay (ELISA).**

Antibodies to the trimeric spike protein were detected by ELISA. MAXISORP immunoplates (442404; NUNC) were coated with StrepMAB-Classic (2-1507-001; iba). Plates were blocked with 2% skimmed milk in phosphate buffered saline (PBS) for one hour and then incubated
210 with 0.125ug of soluble SARS-CoV2 trimeric spike protein or 2% skimmed milk in PBS. After one hour, plasma was added at 1:50 dilution, followed by alkaline phosphatase (AP)-conjugated anti-human IgG (A9544; Sigma) at 1:10,000 dilution or AP-conjugated anti-human IgM (A9794; Sigma) at 1:5000 dilution. The reaction was developed by the addition of p-Nitrophenyl Phosphate (PNPP) substrate and stopped with NaOH. The absorbance was
215 measured at 405nm after 1 hour. Further information is provided in Adams et al 2020 (20).

Estimating the 50% inhibitory concentration

RLUs for each well were standardised against technical positive (cells and virus with no sera) and negative (cells with no sera) controls on each plate to determine a percentage
220 neutralisation value. An average neutralisation was calculated across the two sample replicates on each plate (for each dilution). Dilution curves were fit to each sample, with the percentage neutralisation modelled as a logistic function of the dilution factor. This yielded an IC_{50} value for each sample where a curve could be fit; samples that showed no dilution
225 response because of complete or no neutralisation were not given an IC_{50} value. Dilution curves were estimated using nonlinear least squares in R version 3.6.3 (21). An error weighted mean of the IC_{50} value was calculated for samples that were repeated on more than one plate. We classified positive samples as having an IC_{50} value greater than the largest
230 negative control (1:69) with a standard error less than or equal to the least neutralising positive control.

Determining test sensitivity and specificity

Test sensitivity (probability of neutralisation given positive sera) and specificity (probability
235 of a negative result given no exposure) was estimated using 17 (RT-PCR confirmed) positive controls and 100 pre-pandemic blood donor samples as negative controls. The highest inhibitory concentration observed for a negative control was used as a threshold to determine

positive samples (giving 100% [98.10-100] specificity). Of the 17 positive controls, 16
samples neutralised with high confidence, giving an estimated sensitivity of 94.11% [79.17-
240 99.98] (Figure 1).

Accounting for sensitivity and specificity in sample prevalence estimates

Uncertainty in test sensitivity and specificity can be propagated to sample prevalence
245 estimates using a simple hierarchical Bayesian model (22). The number of positive tests in
the positive ($n^+ = 16$) and negative ($n^- = 0$) control groups was modelled as a binomial
distribution:

$$n^+ \sim \text{Binom}(\pi^+, N^+)$$

$$n^- \sim \text{Binom}(1 - \pi^-, N^-)$$

250

where the sensitivity is given by π^+ and the specificity by π^- ($N^+ = 17$ and $N^- = 100$ are
the number of positive and negative controls respectively). An estimate of the true proportion
of positive sera for samples from a given week and health board ($p_{w,h}$) is comprised of
neutralising sera that were missed ($[1 - \pi^+]$) and those incorrectly identified as neutralising
255 samples (from $[1 - \pi^-]$). The observed number of positive samples for the week, w , and
health board, h , ($n_{w,h}$) was modelled as a binomial distribution accounting for test
performance:

$$n_{w,h} \sim \text{Binom}(p_{w,h} \pi^+ + [1 - p_{w,h}][1 - \pi^-], N_{w,h})$$

260 with $N_{w,h}$ the number of samples from each health board in each week. Using this method,
the uncertainty in test specificity and sensitivity is propagated to the estimate of the
seroprevalence; this results in broader credible intervals that better reflect the inherent
uncertainty in test parameters.

265

Modelling sample prevalence

270 In estimating seroprevalence, we assume that neutralising antibodies do not wane in the blood donor population during the survey period and accrue to an equilibrium (13). Making this assumption, we can fit the logistic function to the time series of sample seroprevalence:

$$p_{w,h} = \frac{\theta_h}{(1 + \exp[-\rho_h (w - \tau_h)])}$$

$$\theta_h \sim \beta(\phi_\theta, \eta_\theta)$$

275

$$\rho_h \sim \mathcal{N}(\mu_\rho, \sigma_\rho^2)$$

$$\tau_h \sim \mathcal{N}(\mu_\tau, \sigma_\tau^2).$$

Here, θ_h is the equilibrium seroprevalence, ρ_h is the rate with which the seroprevalence approaches this maximum and τ_h is the midpoint of the logistic curve for each health board. Parameters were modelled using hierarchical distributions across health boards (the maximum as a beta to bound it between 0 and 1, the rate and the midpoint as a normal distribution). Priors are given in the supplementary material. The model was fit in R version 3.6.3 using the Bayesian inference package JAGS version 4.3.0 (23). Models were run across 6 chains until convergence (potential scale reduction factor less than 1.02 and effective sample size > 10,000).

285

Ethics statement.

290 Ethical approval was obtained for the SNBTS anonymous archive - IRAS Project No. 18005. SNBTS blood donors gave fully informed consent to virological testing, donation was made under the SNBTS Blood Establishment Authorisation and the study was approved by the SNBTS Research and Sample Governance Committee.

295

Results

The estimated IC_{50} values and standard errors for the control and blood donor samples are shown in Figure 1. Of the 3500 post-pandemic blood donor samples, a total of 111 contained anti-SARS2 neutralising antibodies using the IC_{50} and standard error based thresholds described in the methods. The results of the neutralisation assay were positively correlated with ELISA optical density (Figure S2, Pearson's correlation coefficient = 0.86, $p < 0.001$).

No samples from the 17th March showed neutralising activity. Blood donor samples obtained from donations during the 21st-23rd March, 5th-6th April, 18th-20th April, 2nd-4th May and 16th-18th May contained neutralising anti-SARS2 antibodies (Figure 2). The number of samples containing neutralising antibodies did not significantly rise after the 5th-6th April.

Estimates of seroprevalence in the healthcare boards based on the final sampling point between the 16th-18th May are illustrated in Figures 3 and 4. The lowest uncertainty is associated with estimates from the Greater Glasgow and Clyde health board (5.35% [3.19-7.89%]); Tayside, Lothian and Grampian have similar median estimates with higher uncertainty. Lanarkshire is predicted to have the highest seroprevalence of all health boards (7.59% [4.60, 11.20%]) whilst the Highlands and Borders have the lowest seroprevalence of around 2.08 [0, 5.08%] and 2.16 [0, 5.85%], respectively. Throughout this period, IC_{50} values between weeks did not show a statistically significant difference (Figure S3). No statistically significant variation in IC_{50} value was seen based on age or sex (Figure S4).

The outbreaks as a whole in Scotland were centred in the major urban centres – Glasgow and Edinburgh, in addition to the Lanarkshire health authority region (Figures 3&4). To explore this phenomenon in further detail, a separate analysis of 491 samples from the Great Glasgow region collected between the 18th-20th April was performed. 42/490 of these samples have neutralising antibodies. Analysis of the distribution of samples containing neutralising antibodies by postcodes showed that most of these samples located in the Paisley (PA) (14/85) and Motherwell (ML) (15/197) postcodes of Greater Glasgow, indicating that outbreaks in these regions are localised. By comparison, Central Glasgow had comparatively few samples containing neutralising antibodies (7/195; Figure 5).

Discussion

330

The findings from this study suggest that blood donors can be used as a sentinel population to track the emergence and progression of an epidemic.

335 Whilst the demographics of blood donors differs in several aspects from the general population, most notably because of the exclusion of those at risk for blood-borne viruses (HIV-1, HCV, HBV) and syphilis, they might be considered a reasonable representation of the adult population in the absence of any obvious predisposing factors for infection. The only other general exclusions were a four-week and a four month donation deferral period in those people who travelled to specified countries at risk for arbovirus and malaria infections, 340 respectively.

However, estimates of seroprevalence are complicated by non-uniform sampling (Figures 2&3). The blood donations collected and tested in this study tend to be focused in specific postcodes, based on the locations where weekly donations took place. This produces an added level of complexity as our data shows that outbreaks are focused in specific 345 communities even on the scale of a medium sized city such as Glasgow (Figure 5). This is further confounded by the absence of samples from individuals below the age of 18 and individuals over the age of 75.

350 The results presented in this study are based on a formally non-validated assay. However, by using contact traced asymptomatic individuals who had been PCR-confirmed as infected by SARS-CoV-2 and 100 donors obtained prior to the epidemic we were able to ascertain the sensitivity of the assay. Furthermore, a second ELISA based assay was used to confirm the analysis. As 16/17 PCR confirmed asymptomatic cases were detected, the assay is estimated 355 to have a sensitivity of 94.11% [79.17-99.98] (Figure 1). Other studies have previously shown that the pMN assay correlates well with other lab-based and commercial serological assays (24).

Based on our data, the assay appears to be specific to SARS-CoV-2. There are four 360 circulating seasonal coronaviruses: HKU1, OC43, NL63 and 229E which circulate during the winter months (25). The 100 pre-pandemic samples collected in the winter months of 2019, prior to the start of the epidemic in Scotland, did not cross-react with the SARS-CoV-2 pseudotyped virus (Figure 1). Individuals in this cohort will have been infected with the seasonal coronaviruses but not SARS-CoV-2 and contain neutralising antibodies to them.

365 Therefore, as there were no false positive results in the pre-pandemic samples, which were not due to noise within the neutralisation assay, we can have a high degree of confidence that the antibodies detected in the samples from March to May 2020 were generated by SARS-CoV-2 infection.

370 The utility of using pMN assays and ELISAs to track population exposure is dependent on the assumptions that (i) every infected individuals seroconverts, and (ii) that once seroconverted, the antibodies remain circulating in the blood at detectable levels. A decrease in total antibody and neutralising antibody titres have been noted in samples drawn up to two months post peak neutralising antibody response (approximately 3-4 weeks post infection). In
375 some instances antibody levels occasionally becoming undetectable when tested with a specific assay and analysis methodology (10,13). This drop in titres may lead to false negatives in the later timepoints. However, the dates of collection used in this study all fall within three months of the diagnosis of the first confirmed case in Scotland on 1st March (26). For this reason, it is unlikely that this study is hampered by the drop in neutralising antibody
380 levels described elsewhere, although future seroprevalence studies may potentially underestimate the true level of population exposure. It is possible that some individuals also may not seroconvert, representing a small pool of patients that will be false negative (12).

Samples containing anti-SARS2 neutralising antibodies were detected in blood donors who
385 gave blood between the 16th-17th March in all Health Boards (Figures 2&3). Subsequently, samples containing anti-SARS2 neutralising antibodies were detected in every further time point assayed until the end of the study. Consequently, due to the 14-28 day incubation period prior to seroconversion, it is likely that SARS-CoV-2 began circulating in Scotland in late February 2020 and potentially earlier (10,11).

390

395

References

- 400 1. Li Q, Guan X, Wu P, Wang X, Zhou L, Tong Y, et al. Early transmission dynamics in Wuhan, China, of novel coronavirus-infected pneumonia. *New England Journal of Medicine*. 2020. p. 1199–207.
2. Wu F, Zhao S, Yu B, Chen YM, Wang W, Song ZG, et al. A new coronavirus associated with human respiratory disease in China. *Nature*. 2020;579(7798):265–9.
- 405 3. WHO. WHO situation report 173. 2020; July.
4. Zhou F, Yu T, Du R, Fan G, Liu Y, Liu Z, et al. Clinical course and risk factors for mortality of adult inpatients with COVID-19 in Wuhan, China: a retrospective cohort study. *Lancet*. 2020;395(10229):1054–62.
5. Huang C, Wang Y, Li X, Ren L, Zhao J, Hu Y, et al. Clinical features of patients
410 infected with 2019 novel coronavirus in Wuhan, China. *Lancet*. 2020;395(10223):497–506.
6. Wölfel R, Corman VM, Guggemos W, Seilmaier M, Zange S, Müller MA, et al. Virological assessment of hospitalized patients with COVID-2019. *Nature*. 2020;581(7809):465–9.
- 415 7. Mizumoto K, Kagaya K, Zarebski A, Chowell G. Estimating the asymptomatic proportion of coronavirus disease 2019 (COVID-19) cases on board the Diamond Princess cruise ship, Yokohama, Japan, 2020. *Eurosurveillance*. 2020.
8. Byambasuren O, Cardona M, Bell K, Clark J, McLaws M-L, Glasziou P. Estimating the Extent of True Asymptomatic COVID-19 and Its Potential for Community
420 Transmission: Systematic Review and Meta-Analysis. *SSRN Electron J*. 2020;
9. Kellam P, Barclay W. The dynamics of humoral immune responses following SARS-CoV-2 infection and the potential for reinfection. *J Gen Virol*. 2020;
10. Long QX, Tang XJ, Shi QL, Li Q, Deng HJ, Yuan J, et al. Clinical and immunological assessment of asymptomatic SARS-CoV-2 infections. *Nat Med*. 2020;
- 425 11. Liu A, Li Y, Peng J, Huang Y, Xu D. Antibody responses against SARS-CoV-2 in COVID-19 patients. *J Med Virol* [Internet]. 2020;jmv.26241.
12. Gallais F, Velay A, Wendling M-J, Nazon C, Partisani M, Sibilia J, et al. Intrafamilial Exposure to SARS-CoV-2 Induces Cellular Immune Response without
Seroconversion. medRxiv Available from:
430 <https://www.medrxiv.org/content/10.1101/2020.06.21.20132449v1%0A>
13. Seow J, Graham C, Merrick B, Acors S, Steel K, Hemmings O, et al. Longitudinal evaluation and decline of antibody responses in SARS-CoV-2 infection. medRxiv.

- 2020;21(1):1–9.
- 435 14. Riley S, Ainslie K, Eales O, Jeffrey B, Walters C, Atchison C, et al. Community prevalence of SARS-CoV-2 virus in England during May 2020: REACT study. medRxiv. 2020;(May):1–24.
15. UK government coronavirus data. Available from: www.coronavirus.data.gov.uk
16. Ewer K, Rampling T, Venkatraman N, Bowyer G, Wright D, Lambe T, et al. A monovalent chimpanzee adenovirus ebola vaccine boosted with MVA. *N Engl J Med.* 440 2016;374(17):1635–46.
17. Grehan K, Ferrara F, Temperton N. An optimised method for the production of MERS-CoV spike expressing viral pseudotypes. *MethodsX.* 2015;2:379–84.
18. Temperton NJ, Hoschler K, Major D, Nicolson C, Manvell R, Hien VM, et al. A sensitive retroviral pseudotype assay for influenza H5N1-neutralizing antibodies. 445 *Influenza Other Respi Viruses.* 2007 May;1(3):105–12.
19. Nie J, Li Q, Wu J, Zhao C, Hao H, Liu H, et al. Establishment and validation of a pseudovirus neutralization assay for SARS-CoV-2. *Emerg Microbes Infect.* 2020;9(1):680–6.
20. Adams ER, Ainsworth M, Anand R, Andersson MI, Auckland K, Baillie JK, et al. 450 Antibody testing for COVID-19: A report from the National COVID Scientific Advisory Panel. *Wellcome Open Res.* 2020;5:139.
21. R Development Core Team R. R: A Language and Environment for Statistical Computing [Internet]. Team RDC, editor. R Foundation for Statistical Computing. R Foundation for Statistical Computing; 2011. p. 409.
- 455 22. Stringhini S, Wisniak A, Piumatti G, Azman AS, Lauer SA, Baysson H, et al. Seroprevalence of anti-SARS-CoV-2 IgG antibodies in Geneva, Switzerland (SEROCoV-POP): a population-based study. *Lancet.* 2020;
23. Plummer M. JAGS: A program for analysis of Bayesian models using Gibbs sampling. Proceedings of the 3rd International Workshop on Distributed Statistical Computing; 460 Vienna, Austria. 2003. p. 125.
24. Harvala H, Robb M, Watkins N, Ijaz S, Dicks S, Patel M, et al. Convalescent plasma therapy for the treatment of patients with COVID-19: Assessment of methods available for antibody detection and their correlation with neutralising antibody levels. medRxiv. 2020;2020.05.20.20091694.
- 465 25. Gaunt ER, Hardie A, Claas ECJ, Simmonds P, Templeton KE. Epidemiology and clinical presentations of the four human coronaviruses 229E, HKU1, NL63, and OC43

detected over 3 years using a novel multiplex real-time PCR method. *J Clin Microbiol.* 2010;48(8):2940–7.

26. Coronavirus: first case is confirmed in Scotland

470 1 March 2020 scottishfinancialreview.com

475

Main text figures

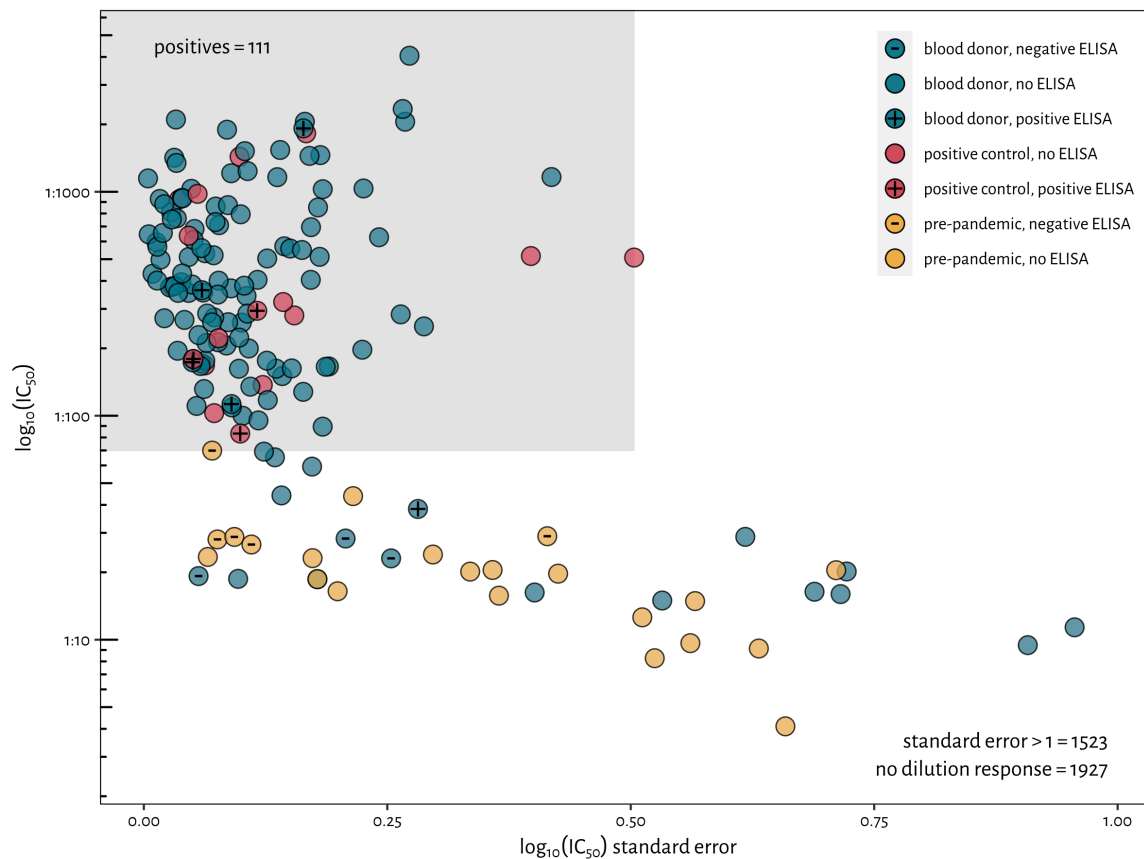


Figure 1. Selection criteria for classifying a sample as neutralising. Samples are required to have an estimated IC_{50} and a standard error at least as small as the worst neutralising positive control. This penalises samples with poorly defined inhibitory concentrations. Pre-pandemic samples are shown in yellow, positive controls in red and blood donor samples as blue. ELISA results are annotated on top of the points.

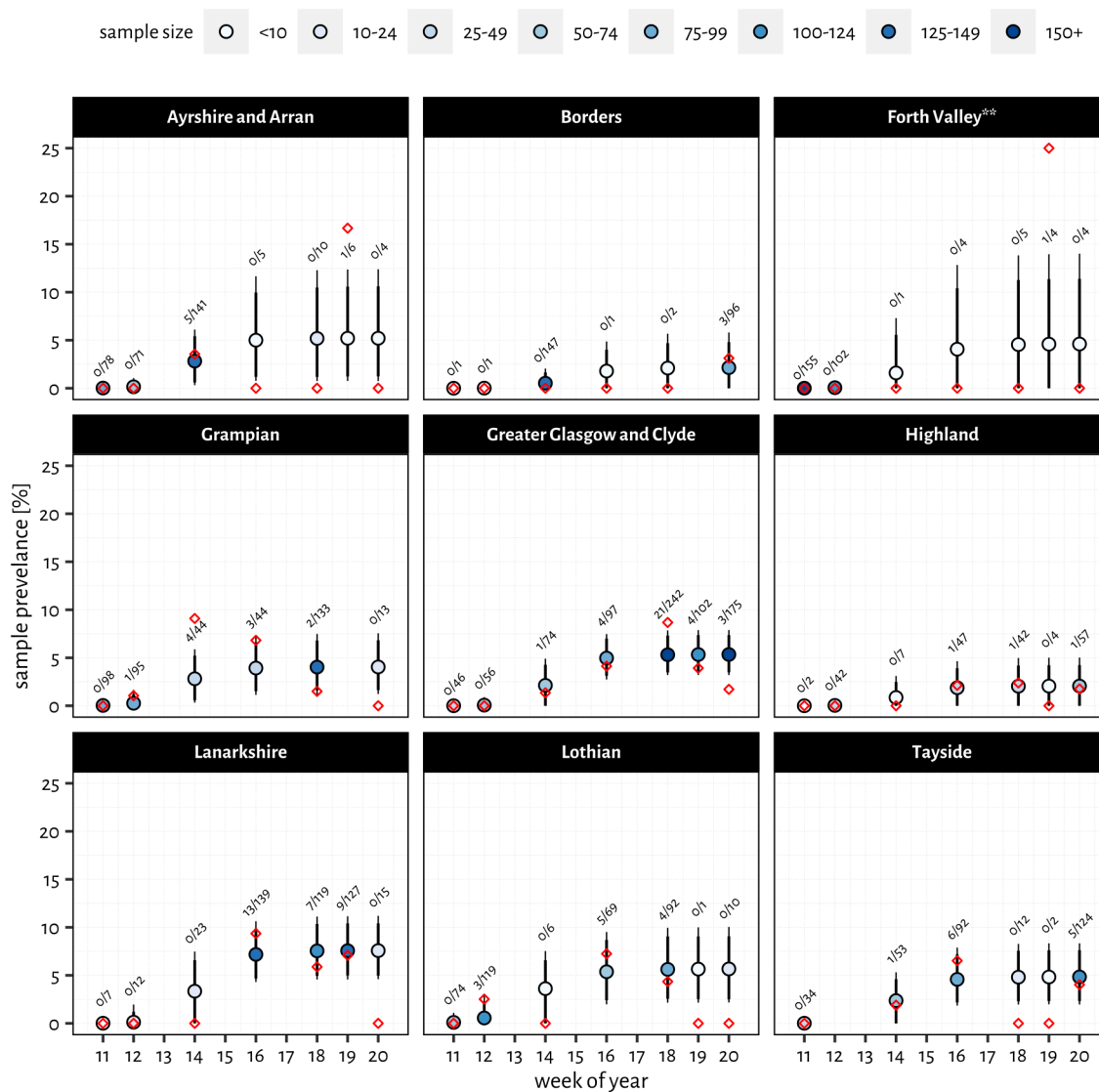


Figure 2. Sample prevalence estimates for each health board through time using the model outlined in the methods. Median prevalence estimates are marked with filled circles (colour denoting sample size) while thick and thin error bars give the 90 -95% highest density intervals respectively. Red diamonds represent the raw percentage estimates from the data. Estimates for Forth Valley are highlighted (**) as the poor sample coverage and single positive result could be fit by a range of values.

480

485

490

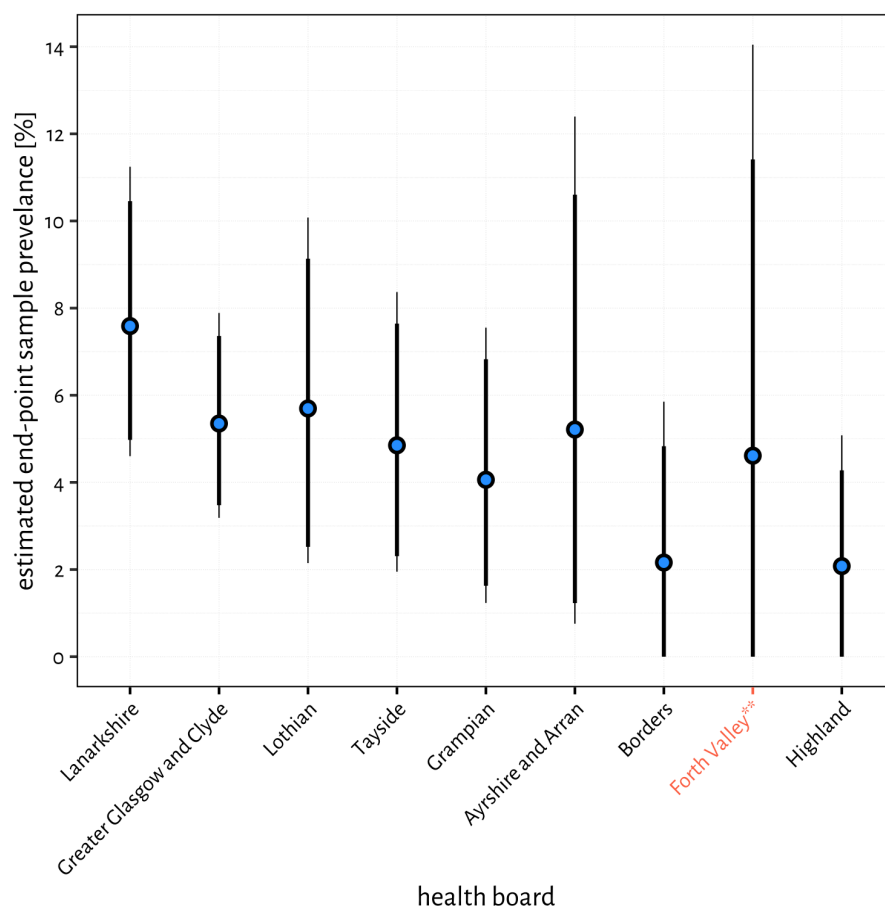


Figure 3. Estimates of sample prevalence at the end of our study period (the parameter θ_h from the logistic equation) ordered by the lower 95% confidence interval. The median parameter estimate is represented by the blue point, with thick and thin error bars denoting the 90 and 95% highest density intervals, respectively. All sample estimates are characterised by high uncertainty: the Lanarkshire health board is predicted to have the highest prevalence; Greater Glasgow and Clyde is estimated with the most confidence; while Forth Valley, Borders and Highland could not be interpreted: and estimates for the Forth Valley should be treated with scepticism due to poor sampling (see Figure 2).

495

500

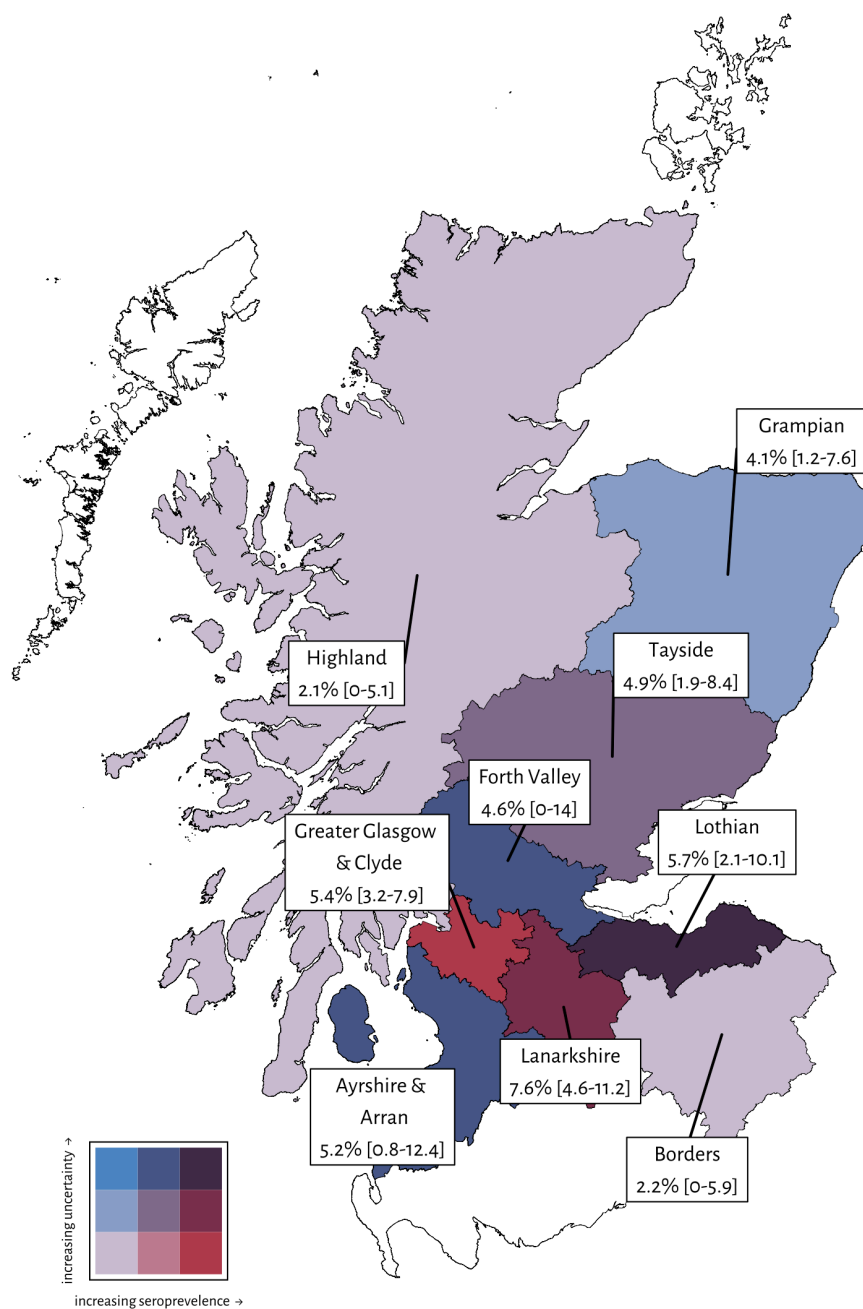


Figure 4. Map of Scottish health boards showing estimated endpoint seroprevalences. White health boards were not sufficiently sampled to generate estimates. The colour scale denotes the confidence and seroprevalence in each health board.

505

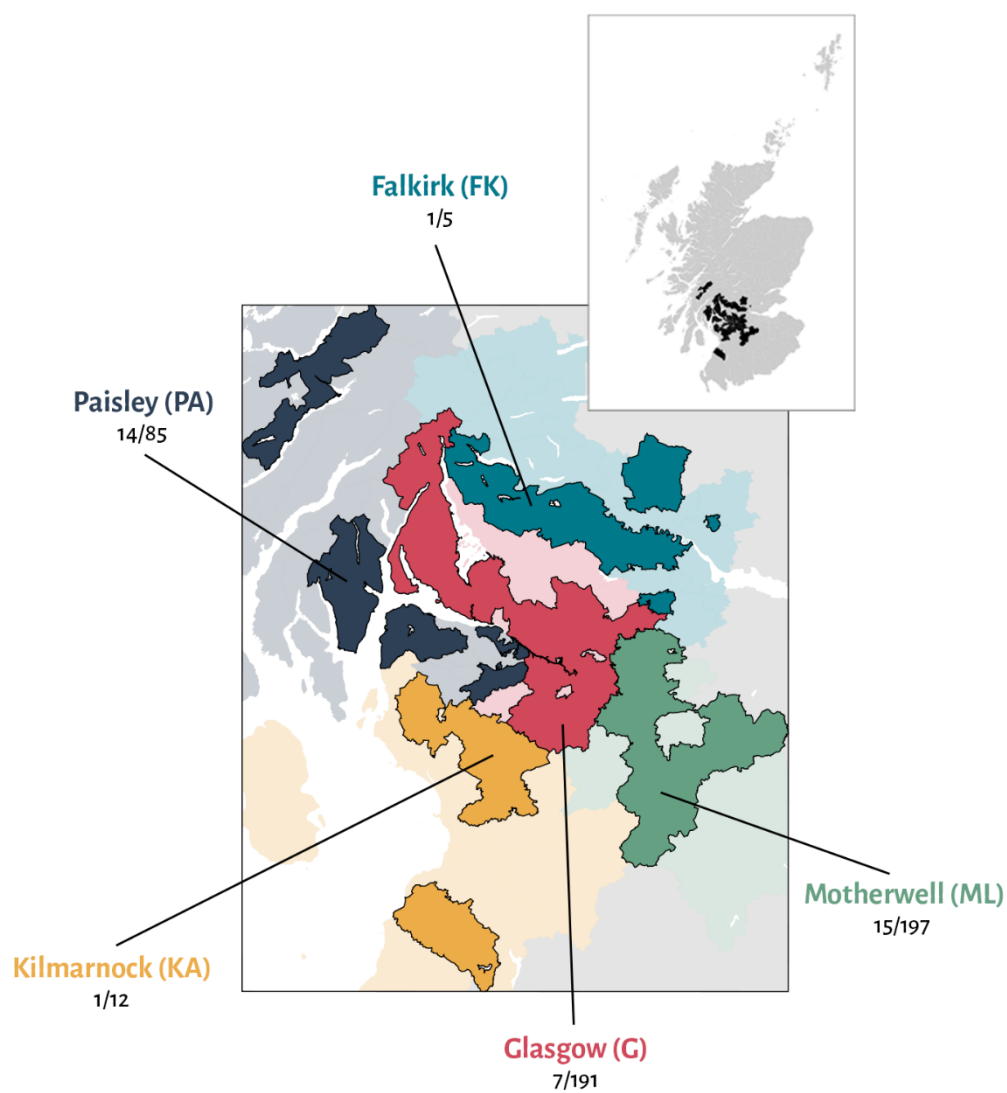


Figure 5. Raw counts of positive samples in the additional survey of postcodes close to Glasgow. Of the 500 samples collected, 490 fell within a reasonable radius of the city.

510