

Changes in Cause-of-Death Attribution During the Covid-19 Pandemic:  
Association with Hospital Quality Metrics and Implications for Future Research

Kathleen A. Fairman, MA, PhD  
Adjunct Assistant Professor  
Midwestern University College of Pharmacy-Glendale  
Glendale, Arizona  
[kfairm@midwestern.edu](mailto:kfairm@midwestern.edu)

Kellie J. Goodlet, Pharm.D., BCPS, BCIDP  
Assistant Professor  
Department of Pharmacy Practice  
Midwestern University College of Pharmacy-Glendale  
Glendale, Arizona

James D. Rucker, BA  
Research Intern  
Kathleen Fairman LTD  
Phoenix, AZ

Funding: No external funding was received for this project. Kathleen Fairman LTD provided analytic support. Dr. Fairman, Dr. Goodlet, and Mr. Rucker have nothing to disclose.

## Abstract

**Background:** Severe acute respiratory syndrome coronavirus 2 (SARS-CoV-2) is often comorbid with conditions subject to quality metrics (QM) used for hospital performance assessment and rate-setting. Although diagnostic coding change in response to financial incentives is well documented, no study has examined the association of QM with SARS-CoV-2 cause-of-death attribution (CODA). Calculations of excess all-cause deaths overlook the importance of accurate CODA and of distinguishing policy-related from virus-related mortality.

**Objective:** Examine CODA, overall and for QM and non-QM diagnoses, in 3 pandemic periods: awareness (January 19-March 14), height (March 15-May 16), and late (May 17-June 20).

**Methods:** Retrospective analysis of publicly available national weekly COD data, adjusted for population growth and reporting lags, October 2014-June 20, 2020. CODA in 5 pre-pandemic influenza seasons was compared with 2019-20. Suitability of the data to distinguish policy-related from virus-related effects was assessed.

**Results:** Following federal guidance permitting SARS-CoV-2 CODA without laboratory testing, mortality from the QM diagnoses cancer and chronic lower respiratory disease declined steadily relative to prior-season means, reaching 4.4% less and 12.1% less, respectively, in late pandemic. Deaths for non-QM diagnoses increased, by 21.0% for Alzheimer's disease and 29.0% for diabetes during pandemic height. Increases in competing CODs over historical experience, suggesting SARS-CoV-2 underreporting, more than offset declines during pandemic height. However, in the late-pandemic period, declines slightly numerically exceeded increases, suggesting SARS-CoV-2

overreporting. In pandemic-height and late-pandemic periods, respectively, only 83.5% and 69.7% of increases in all-cause deaths were explained by changes in the reported CODs, including SARS-CoV-2, preventing assessment of policy-related mortality or of factors contributing to increased all-cause deaths.

Conclusions: Substitution of SARS-CoV-2 for competing CODs may have occurred, particularly for QM diagnoses and late in the pandemic. Continued monitoring of these trends, qualitative research on pandemic CODA, and the addition of place-of-death data and psychiatric CODs to the file would facilitate assessment of policy-related and virus-related effects on mortality.

Ascertainment of the number of deaths from severe acute respiratory syndrome coronavirus 2 (SARS-CoV-2) is foundational to understanding the severity, scope, and spread of the infection. Despite its importance, estimation of SARS-CoV-2 deaths is challenging because advanced age, genetic polymorphisms, and obesity-related comorbidities that predispose to inflammatory states increase the likelihood of dysregulated immunological function, severe respiratory distress, and mortality from infectious respiratory illness.<sup>1,2</sup> These host factors represent competing potential causes of death (COD). For example, 98.8% of Italy's SARS-CoV-2 deaths occurred in persons with  $\geq 1$  comorbidity, 48.6% with  $\geq 3$  comorbidities, and median decedent age was 80 years.<sup>3</sup> Similarly, of U.S. SARS-CoV-2 deaths reported as of May 28, 2020, 93% involved other CODs (mean 2.5 additional causes), and 60% occurred in persons aged  $\geq 75$  years.<sup>4</sup> This pattern of multiple contributing CODs is common in respiratory infection-related mortality.<sup>5</sup>

In death certificate issuance during the pandemic, methods to account for this pattern varied, as no single standard for SARS-CoV-2-attributable death exists. In Italy, all deaths in patients testing positive for SARS-CoV-2 were attributed to the infection despite high prevalence rates for comorbid conditions, measured in early deaths: ischemic heart disease (30%), diabetes (36%), cancer (20%), and atrial fibrillation (25%).<sup>6</sup> The U.S. National Center for Health Statistics (NCHS) issued death-certification guidance on March 4, 2020, indicating that SARS-CoV-2 should be reported if “the disease caused or is assumed to have caused or contributed to death.”<sup>7</sup> Follow-up guidance issued on April 3 indicated that it was “acceptable to report COVID-19 on a

death certificate without [laboratory test] confirmation” if circumstances indicating likely infection were “compelling within a reasonable degree of certainty.”<sup>8</sup>

This nonspecific guidance should be interpreted in light of previous research findings that COD attribution (CODA) errors are common on death certificates, particularly in infectious disease and septic shock.<sup>9,10</sup> In one survey of New York City (NYC) resident physicians in 2010, 49% indicated they had knowingly reported an inaccurate COD on one or more certificates, often (54%) at the behest of hospital staff, and 70% reported they had at least once been unable to report septic shock “as an accepted cause of death” and had been “forced to list an alternate cause.”<sup>9</sup> In an audit of NYC data from 2010-2014, 67% of pneumonia death certificates contained  $\geq 1$  error, compared with 46% for cancer and 32% for diabetes.<sup>10</sup>

Such CODA ambiguities are often addressed by calculating “excess deaths,” defined as all-cause deaths exceeding those projected from historical experience.<sup>11</sup> This method, recently used to estimate that official tallies of SARS-CoV-2 deaths represented only about 66%-78% of the disease’s true mortality impact,<sup>12,13</sup> is potentially advantageous in estimating SARS-CoV-2 impact by accounting for deaths that may not have been explicitly coded as infection-related.<sup>14</sup> Examples include deaths from cardiac events to which undetected SARS-CoV-2 may have contributed<sup>15</sup> or out-of-hospital deaths occurring without medical care because of health-system overcrowding.<sup>16</sup> Despite these advantages, the method is compromised by 3 considerations when applied to SARS-CoV-2 CODA, which should be quantified to inform future policy.

First, the method should distinguish natural from societal causes to account for possible consequences of policy decisions and fears that, although prompted by anticipated effects of SARS-CoV-2, were not direct or inevitable viral sequelae. Examples include suicides from stay-at-home order-related labor market contraction<sup>17</sup> and social isolation,<sup>18</sup> increases in domestic violence,<sup>19</sup> overdoses due to interruptions in substance use disorder treatment,<sup>20</sup> and delays in emergency care for life-threatening conditions<sup>21-23</sup> in geographic areas where health-system overcrowding was expected but not realized.<sup>24,25</sup> To promote evidence-based public health policy, population-level disease-mitigation strategies that go beyond traditional practices of isolating the sick and quarantining those exposed to disease merit empirical investigation.<sup>26,27</sup>

Second, the method should reflect the effects that financial incentives around hospital quality metrics (QM), which are commonly associated with provider coding practices, may have on CODA.<sup>28-30</sup> For example, in United Kingdom hospitals, increases in coding for palliative-care admissions produced a severity-adjusted mortality-rate decline of 50% over the 5-year period ending in 2009, while the crude death rate remained unchanged.<sup>31</sup> Although we are not aware of studies linking QMs to CODA, it is known that CODA errors are more likely to occur in hospitals than elsewhere,<sup>32</sup> with an 85% error rate reported in comparisons of death certificates with autopsy findings at one regional academic institution.<sup>33</sup> The potential effect of financial incentives on CODA is particularly important for SARS-CoV-2 because several competing CODs, including chronic lower respiratory disease (CLRD), acute myocardial infarction, heart failure,

pneumonia, and stroke, are included in Medicare 30-day mortality measures used to calculate prospective payment rates.<sup>34</sup> All but one of these (CLRD) is included in Agency for Healthcare Research and Quality inpatient quality indicators.<sup>35</sup> Sepsis and cancer, other competing causes of death, are also the target of QM.<sup>36-38</sup> Although not affecting all-cause death counts, the incentive to substitute SARS-CoV-2 for another COD could affect the accuracy of the SARS-CoV-2-attributed count.

Third, the method should account for baseline life expectancies among those whose deaths were reported as caused by SARS-CoV-2. For example, at age 80 years, the 1-year probability of death is 5.8% for males and 4.3% for females, higher in those with cardiovascular comorbidities.<sup>39,40</sup> In that age group, the population-level risk of a SARS-CoV-2 death in New York City, a pandemic epicenter, was 1.5% in about 3 pandemic months through June 17, 2020.<sup>41</sup> Thus, deaths from competing CODs would be expected to decline late in the pandemic and in subsequent months. From a policy perspective, quantifying this effect is consistent with the quality-adjusted life year approach in evidence-based medicine, which considers future life expectancy in assessing the effects of disease and disease-mitigation interventions.<sup>42</sup>

To permit assessments of SARS-CoV-2-related mortality, publicly available NCHS data include weekly aggregated totals for all-cause deaths, natural-cause deaths, and selected categories of CODs, reported as final data for 2014-2018 and provisional data for 2019-2020.<sup>4</sup> These data, which are updated weekly, have important limitations. First, International Classification of Diseases (ICD)-10 diagnosis codes are grouped into

broad categories, rather than the individual ICD-10 codes available in full COD files (Appendix 1). Second, only 11 selected diagnostic categories are reported. Third, although 63% of deaths are reported within 10 days, reporting lags vary by state.<sup>4</sup> Reporting delays for injurious deaths are greater because they require investigation (e.g., forensic toxicology).<sup>43</sup> Pending investigation, these deaths are often assigned ICD-10 code R99, “ill-defined and unknown cause of mortality.”<sup>43</sup>

In this exploratory study, we used these files to provide preliminary evidence on the following: (1) change in CODA compared with historical experience; (2) association of CODA with QM; and (3) suitability of the files to distinguish policy-related from virus-related effects. All analyses were adjusted for population and reporting lags and based on comparisons of 2020 with equivalent weeks in the 5 most recent years. We hypothesized that if substitution of SARS-CoV-2 for alternative CODs occurred, death counts for competing diagnoses would decline relative to historical experience during the pandemic, especially after issuance of the NCHS death-certification guidance; these declines would be greater for QM than for other conditions; and they would accelerate late in the pandemic as earlier SARS-CoV-2 deaths offset later deaths from competing causes.

## Methods

### *Data*

Publicly available COD data for October 2014 through June 20, 2020, were downloaded from the NCHS website on July 10, 2020. The outcome was reported underlying COD (UCOD), defined as “the disease or injury which initiated the train of morbid events



leading directly to death.”<sup>44</sup> Three states were excluded because of incomplete reporting in 2020 (Connecticut and North Carolina) or in 2015 (Wisconsin) by subtracting their death counts and population counts from U.S. figures. Raw death counts were adjusted to July 2019 population using annual census data (Appendix 2).<sup>45</sup>

Reporting lag adjustment was made by calculating percentage changes in death counts, overall and by ICD category, for each of 7 weekly updates from May 27 to July 8, 2020, as a function of the number of weeks from the reported week to the update week (e.g., deaths in week ending May 9, updated on May 20 = 1.6-weeks). For each of 16 weeks prior to the July 8 update, we used mean percentage change values as inflationary factors to calculate compounded adjustment multipliers (Appendix 3).

### *Statistical Analyses*

Time series analyses were performed using standard methods, beginning with descriptive analysis.<sup>46,47</sup> We first plotted mortality curves over time, then compared pandemic periods with mean values for the same weeks in prior seasons. Absolute and percentage changes in counts of deaths, comparing 2020 with 5-year means, were calculated for 3 pandemic periods: pandemic awareness beginning January 19, based on media-report analysis of news coverage volume;<sup>48</sup> pandemic height beginning March 15, the approximate first date of >1,000 U.S. cases;<sup>49</sup> and late pandemic, beginning May 17. These calculations were performed separately for all-cause deaths; for each ICD category; and for grouped categories based on potential QM inclusion, defined as percentage of deaths in the category that were QMs in the most recent full COD file (2018; Appendix 1): all or nearly all QM (cancer, CLRD, septicemia;  $\geq 97\%$  of deaths);

some QM (cerebrovascular disease [CBVD], heart disease, influenza/pneumonia; 56%-81%); and no QM (Alzheimer's disease, diabetes, kidney disease, other acute respiratory illness).

For all-cause deaths and separately for each category, we fit Poisson regression models with Fourier terms (sine-cosine pairs) to control for annual and semiannual seasonality. Models were calibrated through the first 5 years (October 2014-September 2019), and the resulting equations applied to the 2019-20 influenza season to generate predicted values. Prediction confidence ranges were estimated using Wald confidence interval equation parameters. Because all models except cancer and deaths not elsewhere classified (NEC) displayed classic first-order autocorrelation, with gradual declines in autocorrelation function and precipitous declines in partial autocorrelation function correlograms after lag 1,<sup>50</sup> we added first-order autoregression (AR1) terms to the models. When the resulting models produced the unexpected and seemingly erroneous result of only 21,833 excess all-cause deaths during pandemic height, we performed additional modeling excluding the AR1 terms, thereby permitting autocorrelated errors. All analyses were performed using IBM SPSS v25.0 (Armonk, NY) with a priori  $\alpha=0.05$ .

## Results

Of approximately 15 million population-adjusted all-cause deaths reported in the 47 study states during the 5.8-year study period, 10.7 million (71%) were reported in one of the ICD categories included in the COD file, of which 400,000 were reported as a death

NEC, including the ICD code R99. Counts formed a seasonal annual pattern, with defined peaks and troughs at similar times each year (Appendix 4). Exceptions in 2020 included a higher and later peak in all-cause deaths in April; a later peak for heart disease deaths, also in April; a marked increase in NEC deaths; and declines in deaths from cancer and CLRD. The 1-week maximum peak in all-cause deaths increased every 2-3 years, with a greater increase in 2020 than in previous years: 58,502 in 2015, 62,979 in 2018, and 73,367 in 2020. Deaths in the final study week, ending June 20, 2020, appeared to decline sharply. Although declines of this magnitude were not unusual in 2020, we added a sensitivity analysis excluding the final week to address possible residual underreporting.

Comparisons of 2020 values with prior-year population-adjusted means suggested a peak in all-cause deaths beginning at pandemic start and returning to near mean values approximately 12 weeks later, corresponding closely to a similar peak in total acute respiratory deaths, including influenza/pneumonia, other acute respiratory illness, and SARS-CoV-2 (Figure 1, Panel 1; Table 1). Influenza/pneumonia deaths peaked later in the season in 2020 than in prior years, despite similar magnitudes. NEC deaths including R99 increased rapidly beginning in January, exceeding 5-year means by 53% during the pandemic awareness period and by >100% during and after pandemic height.

Following issuance of NCHS reporting guidance in the first week of April 2020, deaths for 2 of 3 QMs, cancer and CLRD, but not for sepsis, steadily declined relative to prior

year means (Figure 1, Panel 2; Table 1). Although these declines were initially small (1%-2%) and within the fluctuation observed during pandemic awareness, late-pandemic cancer deaths were 4.4% less and CLRD deaths 12.1% less than in prior years (3.2% and 11.4%, respectively, in the sensitivity analysis excluding the final study week). Measured from guidance issuance to study end, these changes represented declines of 5,937 deaths (4,566 in sensitivity analysis) for these 2 QMs, compared with prior years.

For non-QM diagnoses, these declines did not occur; instead, deaths increased beginning at pandemic start, including increases of 21.0% for Alzheimer's disease (3,892 deaths) and 29.0% for diabetes (3,806 deaths) during pandemic height (Figure 1, Panel 3; Table 1). Deaths from other competing CODs, for which some but not all diagnoses are QMs, increased by smaller amounts than non-QM diagnoses (CBVD by 8.7%, heart disease by 9.2%; Figure 1, Panel 4; Table 1).

During pandemic height, increases in the non-QM or partial-QM diagnoses more than offset declines in the QM diagnoses (net effect of +21,714 deaths excluding respiratory illness; not shown in Table 1). However, of the total increase of 123,247 all-cause deaths compared with prior-year mean, only 102,956 deaths (83.5%) were explained by changes in the specific CODs included in the NCHS files, leaving 16.5% of the increase in all-cause deaths unexplained.

By the late pandemic period, 2 additional competing CODs had declined compared with historical experience: influenza/pneumonia (-11.6%) and other acute respiratory illnesses (-3.8%), whereas other competing CODs were relatively unchanged (+/- 1%, heart disease, septicemia, and kidney disease) or remained elevated (Alzheimer's disease, 10.6%; diabetes 15.1%; CBVD 5.4%; not all percentages shown in Table 1). In this time period, the net effect of competing CODs was a small decline (-1,232 deaths), and 30.3% of the increase in all-cause deaths was unexplained by specific CODs.

Time series models using AR1 terms fit the data well during the calibration period (October 2014-September 2019; Appendix 5). However, when equations were applied to the 2019-20 influenza season, results were highly sensitive to modeling method (Appendix 6). When modeling was performed using AR1 terms to account for first-order autocorrelation, results suggested only 21,833 excess all-cause deaths during pandemic height. When the nonautocorrelation assumption was intentionally violated by excluding AR1 terms, that estimate increased to 87,943 during pandemic height and 42,964 in late pandemic, for a total of 130,907. Despite this major discrepancy, both models showed greater magnitudes in CODA for non-QM than for QM conditions, as well as less-than-expected death counts for QMs in the late pandemic period.

## Discussion

In this exploratory analysis of NCHS COD files, we found evidence suggesting SARS-CoV-2 may have been substituted for 2 of 3 competing CODs associated with QMs after the NCHS published guidance specifying no laboratory testing requirement for presumptive SARS-CoV-2 UCOD. We also found decreases in several competing CODs relative to prior year means, offset by marked increases in reported deaths from other conditions during pandemic height. Although validating assertions that for patients with certain comorbidities, SARS-CoV-2 may have been underreported as a UCOD,<sup>51</sup> our findings suggest these assertions are oversimplified because of overreporting of SARS-CoV-2 for those with other comorbidities including the second and third top causes of natural death in the United States, cancer and CLRD.<sup>52</sup> Despite concerns about underreporting of SARS-CoV-2 on death certificates,<sup>53</sup> overreporting began to slightly numerically exceed underreporting by the late pandemic period.

Our methods were generally similar to those of the previously reported studies of excess deaths,<sup>12,13</sup> although our method of adjustment for reporting lags was simpler and our study period was longer. The primary strength of the present study was our examination of specific CODs, rather than all-cause deaths alone, because from a policy perspective, the quality of mortality data is important.<sup>53</sup> Moreover, we assessed the suitability of the files to distinguish policy-related from virus-related mortality.

Information of this type should be viewed as essential in considering responses to future pandemics.

Like previous investigators of excess deaths,<sup>12</sup> we found large (122,300 in previous analysis, 130,907 in our analysis) increases in all-cause deaths compared with prior years in Poisson regression models adjusted for seasonality using Fourier terms, but only when our model, like the previous model, included no term to control for autocorrelation. In the model including an AR1 term, we found only a small (21,833) increase in all-cause deaths. It is possible the AR1 model better accounted for the gradually increasing peak in all-cause mortality that occurred biannually or triannually from 2014-15 to 2019-20. However, it is also possible that the model is misleading because of excessively data-driven specification.<sup>46</sup> Therefore, we view the time series models as inconclusive, basing our interpretation primarily on descriptive analyses of the population-adjusted data.

Our finding of potential underreporting of QM-associated deaths compared with prior years is consistent with our a priori hypothesis, which was based on previous research documenting institutional sensitivity of coding practices to policy and financial incentives.<sup>28-31</sup> The present study adds to the body of literature on this topic by associating these effects with death certification. This finding suggests a need for qualitative assessment of how CODAs were made during the pandemic, perhaps conducted by the Office of Inspector General, as QM data are used to set Medicare prospective payment rates.<sup>34</sup> A potential pragmatic contribution of that research is a specific CODA algorithm to be used in future pandemics, facilitating valid and reliable reporting across sites (e.g., hospitals versus nursing homes) and geographic regions.

Important limitations of this exploratory work should be noted. Foremost, findings of this study should be reassessed using data from later weeks to verify or refute the preliminary trends described here. Additional limitations suggest improvements that might be made to the COD files pending availability of the full, final COD data. These full COD data, which are currently available only through 2018, likely will not be posted until 2022.

First, a large number of deaths had no COD or a nonspecific COD recorded in the file. Compared with prior years, NEC deaths more than doubled in a progression that began early in 2020, as pandemic awareness was growing but before SARS-CoV-2 would have been expected to have any biological effect. Moreover, of increases in all-cause death during the pandemic, 16.5% during pandemic height and 30.3% in the late-pandemic period could not be linked to change in the specific CODs included in the file. Based on national evidence of increases in prescriptions for psychotropic drugs beginning on February 16, 2020,<sup>54</sup> reported tripling of depression or anxiety comparing April and May 2019 to 2020,<sup>55</sup> and unprecedented media coverage of SARS-CoV-2 compared with other pandemics,<sup>48</sup> measurement of the mental health effects of growing pandemic awareness and stay-at-home orders on mortality would likely be helpful. This measurement is not possible with the NCHS COD files as currently constructed but could be facilitated with the addition of a new category for psychiatric UCODs (i.e., ICD-10 category F, excluding intellectual disabilities and developmental disorders). Similarly, disaggregation of R99, which is used pending forensic investigation of injurious



deaths,<sup>43</sup> from the rest of the NEC category would facilitate assessments of potential deaths from suicide or overdose.

Second, we imputed possible effects of financial incentives on CODA but did not measure incentives directly. To support or refute our findings, the addition of place of death to the COD files would allow for assessment of whether the QM associations we observed were greater in hospital than in nonhospital settings. Additionally, this change would facilitate assessment of changes in out-of-hospital deaths from heart disease or cerebrovascular disease,<sup>21-23</sup> informing the question of whether stay-at-home orders exacerbated deaths from these causes in geographic areas where hospital bed supply was not limited during the pandemic.<sup>24-25</sup>

Third, neither the study outcome measure nor recommended changes to the COD files would account for long-term physiological effects of SARS-CoV-2, which are the subject of an ongoing cohort study;<sup>56</sup> of suboptimal policy decisions that could have increased SARS-CoV-2 deaths, (e.g., mandatory posthospitalization release of infected patients to nursing facilities);<sup>57</sup> or of long-term effects of stay-at-home order-related declines in preventive care (e.g., pediatric immunizations).<sup>58</sup>

Finally, it should be noted that although recent comparisons of infection-fatality and case-fatality rates for influenza and SARS-CoV-2 have adopted an implicit assumption that the respective infections' numerators are equivalent,<sup>59</sup> the 2 estimates are based on markedly different methods that make direct comparison problematic. National

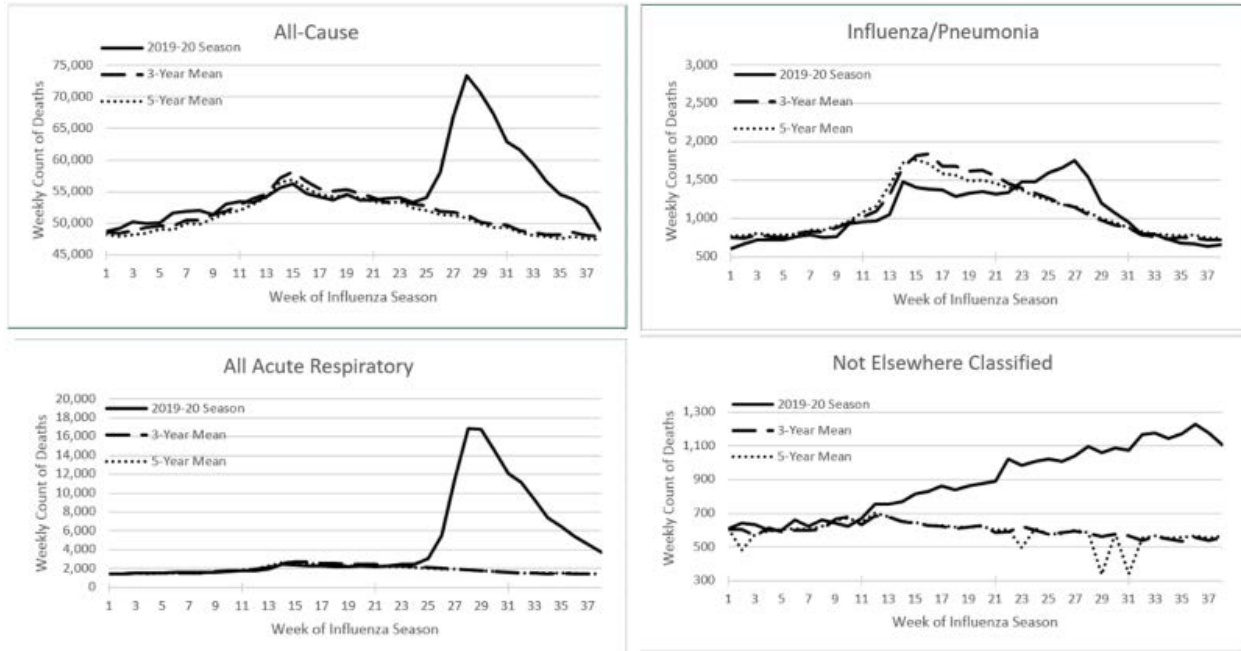
estimates of influenza hospitalizations and deaths are based on a statistical model incorporating ambulatory and inpatient data, in addition to the raw death certificate counts reported here.<sup>60</sup> In contrast, SARS-CoV-2 death counts rely solely on the judgment of the reporter and are, at present, not clinically validated. Pending assessment of the reliability and validity of SARS-CoV-2 death reporting, policy making death-certificate counts should be circumspect, recognizing both the possible vulnerability of the SARS-CoV-2 data to financial incentives and detection bias and the absence of important COD information from the currently available NCHS files.

### **Conclusion**

SARS-CoV-2 deaths appear underreported with some comorbidities, such as Alzheimer's disease and diabetes, and overreported with others including cancer and CLRD, the second and third leading causes of natural death in the United States. Possible overreporting slightly exceeded underreporting for competing CODs beginning late in the pandemic and merits further investigation. Relatively small additions to available NCHS COD data—including place of death, disaggregation of R99 from other NEC deaths, and psychiatric UCODs—could facilitate preliminary analyses of important questions about direct effects of SARS-CoV-2, as well as the effects of stay-at-home orders and media-driven pandemic awareness, on mortality in the pandemic period.

Figure 1. Population-Adjusted and Lag-Adjusted Weekly Death Counts, by Week of Season, 5-Year and 3-Year Prior Season Means and 2019-20

Panel 1. Overview



Panel 2. Hospital Quality Metric Diagnoses

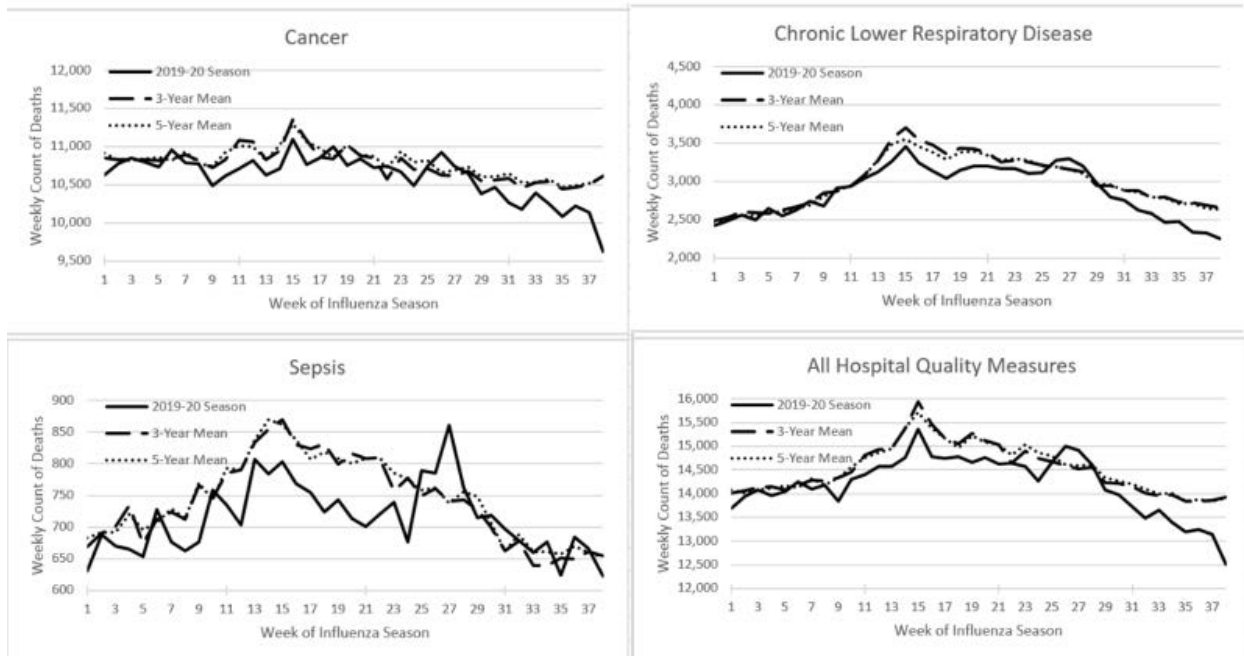
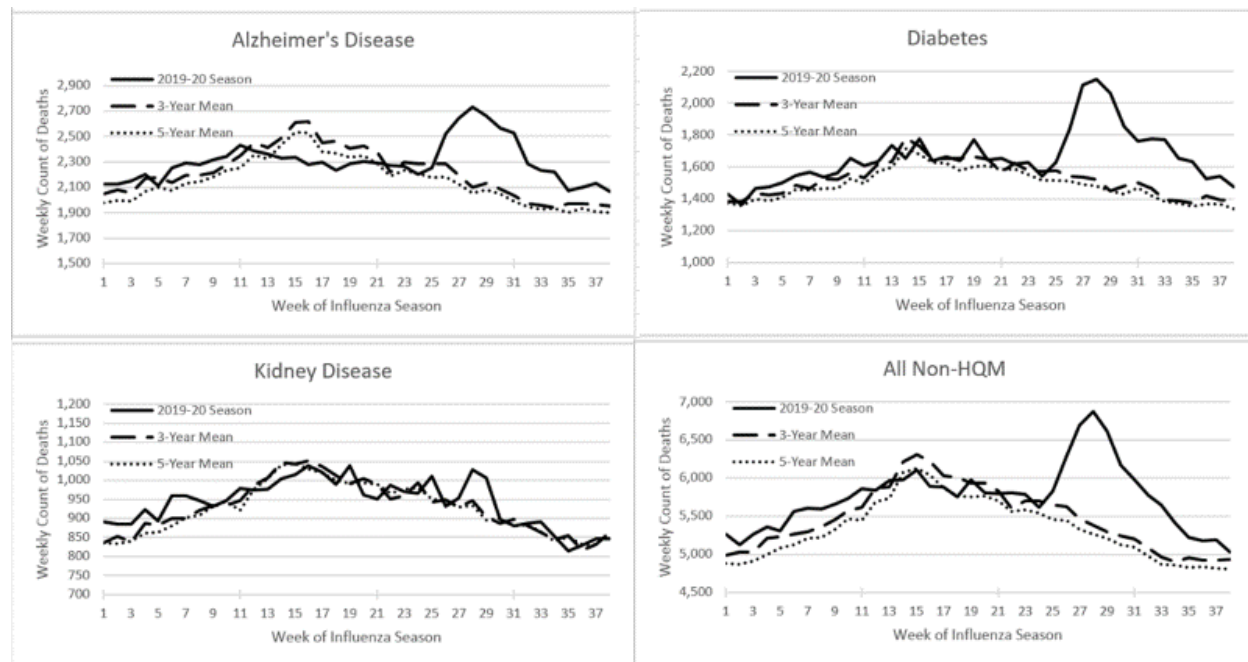
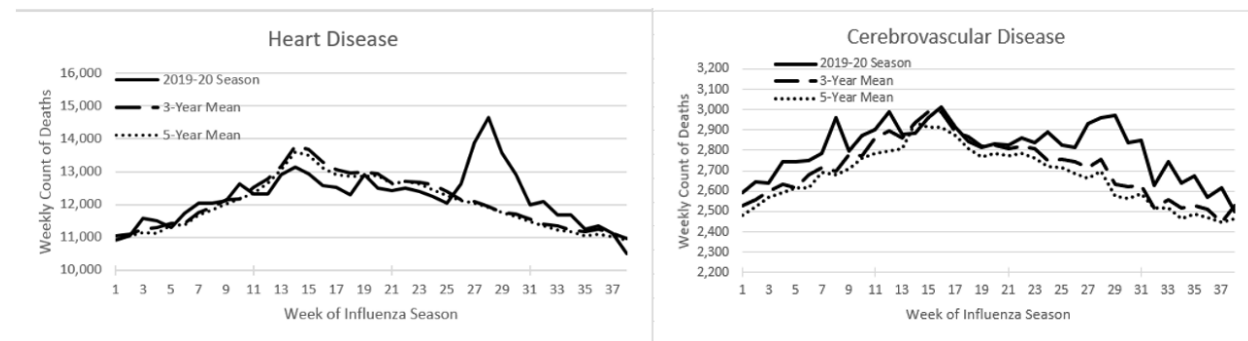


Figure 1 (continued). Population-Adjusted and Lag-Adjusted Weekly Death Counts, by Week of Season, 2014-15 to 2018-19 (Mean) and 2019-2020

Panel 3. Non Hospital Quality-Metric Diagnoses



Panel 4. Other Competing Causes of Death



Notes: Season week 1 begins September 29-October 5, depending on year. Five-year means are seasons 2014-15 through 2018-19, and 3-year means are 2016-17 through 2018-19. Season week 17 (January 19) is the start of pandemic awareness (beginning of intense media coverage of the pandemic).<sup>48</sup> Season week 25 (March 15) is the approximate start of the pandemic height period. Season week 28 (April 5) corresponds to the issuance of NCHS guidance stating laboratory testing was recommended but not required to name SARS-CoV-2 as the underlying cause of death. Season week 34 (May 17, 2020) is the start of the late pandemic period. Acute respiratory (Panel 1) is the sum of SARS-CoV-2, influenza/pneumonia, and other respiratory illnesses, nearly all of which are acute (e.g., pharyngitis). Not elsewhere classified (Panel 1) includes R99, the code used for non natural-cause deaths pending forensic investigation. QM diagnoses include cancer, chronic lower respiratory disease, and septicemia. Non-QM diagnoses include Alzheimer's disease, diabetes, kidney disease, and other respiratory illnesses. QM=quality metric; SARS-CoV-2=severe acute respiratory syndrome coronavirus 2.

Table 1. Population-Adjusted and Reporting Lag-Adjusted Mortality Counts, 5-Year Means and 2020 Totals, All-Cause and Selected Causes of Death, by Pandemic Time Period

	All-Cause	Heart Disease	Cancer	CLRD	CBVD	Alzheimers Disease	Diabetes	NEC	All Acute Respiratory <sup>a</sup>
<i>Awareness (January 19-March 14)</i>									
5-year mean	429,578	101,925	87,088	26,642	22,286	18,356	12,651	4,792	18,296
2020	431,021	99,822	86,076	25,171	22,826	18,164	13,160	7,344	18,262
Change	1,443	-2,103	-1,012	-1,471	540	-192	509	2,552	-34
% difference	0.3%	-2.1%	-1.2%	-5.5%	2.4%	-1.0%	4.0%	53.3%	-0.2%
<i>Height (March 15-May 16)</i>									
5-year mean	450,736	105,741	95,845	27,144	23,516	18,533	13,146	4,715	16,048
2020	573,984	115,451	94,761	26,633	25,571	22,425	16,952	9,715	100,646
Change	123,247	9,710	-1,084	-511	2,055	3,892	3,806	5,000	84,598
% difference	27.3%	9.2%	-1.1%	-1.9%	8.7%	21.0%	29.0%	106.0%	527.1%
<i>Late pandemic (May 17-June 20)</i>									
5-year mean	238,360	55,267	52,653	13,499	12,333	9,579	6,800	2,792	7,387
2020	266,453	55,905	50,336	11,869	12,996	10,596	7,825	5,822	27,629
Change	28,094	639	-2,318	-1,630	663	1,016	1,025	3,030	20,242
% difference	11.8%	1.2%	-4.4%	-12.1%	5.4%	10.6%	15.1%	108.5%	274.0%
<i>Reporting guidance through observation end (June 20)</i>									
5-year mean	534,420	124,589	116,327	31,089	27,786	21,627	15,426	5,753	17,447
2020	661,614	132,794	112,677	28,802	29,993	25,603	19,194	12,473	108,296
Change	127,194	8,205	-3,650	-2,287	2,207	3,976	3,767	6,720	90,849
% difference	23.8%	6.6%	-3.1%	-7.4%	7.9%	18.4%	24.4%	116.8%	520.7%
<b>Sensitivity Analyses Excluding Final Week</b>									
<i>Late pandemic (May 17-June 13)<sup>b</sup></i>									
5-year mean	190,926	44,345	42,045	10,858	9,870	7,680	5,461	2,226	5,937
2020	217,464	45,399	40,709	9,619	10,497	8,526	6,350	4,719	23,883
Change	26,538	1,054	-1,336	-1,239	627	846	888	2,493	17,946
% difference	13.9%	2.4%	-3.2%	-11.4%	6.4%	11.0%	16.3%	112.0%	302.3%
<i>Reporting guidance through observation end (June 13)<sup>b</sup></i>									
5-year mean	486,986	113,668	105,718	28,448	25,322	19,728	14,088	5,187	15,996
2020	612,625	122,289	103,050	26,552	27,493	23,533	17,718	11,370	104,550
Change	125,639	8,621	-2,669	-1,897	2,171	3,805	3,630	6,183	88,554
% difference	25.8%	7.6%	-2.5%	-6.7%	8.6%	19.3%	25.8%	119.2%	553.6%

<sup>a</sup> Sum of influenza/pneumonia, SARS-CoV-2, and other respiratory, which consists mostly of acute infectious respiratory illness (e.g., pharyngitis). <sup>b</sup> Final week of observation removed from calculations to account for possible underreporting even after adjustment. CBVD=cerebrovascular disease; CLRD=chronic lower respiratory disease; SARS-CoV-2=severe acute respiratory syndrome coronavirus 2.

**Appendix 1. ICD-10 Code Groupings in NCHS Preliminary Cause-of-Death Files and Specific Code Descriptions**

<b>NCHS-Reported Category</b>	<b>ICD-10 Codes</b>	<b>Quality Measure</b>	<b>ICD-10 Code Descriptions and Notes</b> <b>Bolded Diagnosis Codes Indicate Quality Measures</b>
Septicemia	A40-A41	Sepsis	<b>A40 Streptococcal sepsis</b> <b>A41 Other sepsis</b>  <b>Quality metric was 100% of all deaths in category in 2018.<sup>a</sup></b>
Malignant neoplasms	C00-C97		Code range includes malignant neoplasms of all types
Diabetes	E10-E14		E10 Type 1 diabetes mellitus E11 Type 2 diabetes mellitus E13 Other specified diabetes mellitus E14 is an old code for unspecified diabetes mellitus
Alzheimer's disease	G30		G30 Alzheimer's disease
Influenza and pneumonia	J10-J18	Pneumonia	J10 Influenza due to other identified influenza virus J11 Influenza due to unidentified influenza virus <b>J12 Viral pneumonia, not elsewhere classified</b> <b>J13 Pneumonia due to Streptococcus pneumoniae</b> <b>J14 Pneumonia due to Hemophilus influenzae</b> <b>J15 Bacterial pneumonia, not elsewhere classified</b> <b>J16 Pneumonia due to other infectious organisms, not elsewhere classified</b> <b>J17 Pneumonia in diseases classified elsewhere</b> <b>J18 Pneumonia, unspecified organism</b>  <b>Quality metric was 81% of all deaths in category in 2018.<sup>a</sup></b>
Chronic LRD	J40-J47	COPD	J40 Bronchitis, not specified as acute or chronic <b>J41 Simple and mucopurulent chronic bronchitis</b> <b>J42 Unspecified chronic bronchitis</b> <b>J43 Emphysema</b> <b>J44 Other chronic obstructive pulmonary disease</b> J45 Asthma J46 Status asthmaticus J47 Bronchiectasis  <b>Quality metric was 97% of all deaths in category in 2018.<sup>a</sup></b>

Other respiratory	J00-J06 J30-J39 J67 J70-J98		<p>J00 Acute nasopharyngitis [common cold]  J01 Acute sinusitis  J02 Acute pharyngitis  J03 Acute tonsillitis  J04 Acute laryngitis and tracheitis  J05 Acute obstructive laryngitis [croup] and epiglottitis  J06 Acute upper respiratory infections of multiple and unspecified sites  J30 Vasomotor and allergic rhinitis  J31 Chronic rhinitis, nasopharyngitis and pharyngitis  J32 Chronic sinusitis  J33 Nasal polyp  J34 Other and unspecified disorders of nose and nasal sinuses  J35 Chronic diseases of tonsils and adenoids  J36 Peritonsillar abscess  J37 Chronic laryngitis and laryngotracheitis  J38 Diseases of vocal cords and larynx, not elsewhere classified  J39 Other diseases of upper respiratory tract  J67 Hypersensitivity pneumonitis due to organic dust  J70 Respiratory conditions due to other external agents  J80 Acute respiratory distress syndrome  J81 Pulmonary edema  J82 Pulmonary eosinophilia, not elsewhere classified  J84 Other interstitial pulmonary diseases  J85 Abscess of lung and mediastinum  J86 Pyothorax  J90 Pleural effusion, not elsewhere classified  J91 Pleural effusion in conditions classified elsewhere  J92 Pleural plaque  J93 Pneumothorax and air leak  J94 Other pleural conditions  J95-J95 Intraoperative and postprocedural complications and disorders of respiratory system, not elsewhere classified  J96 Respiratory failure, not elsewhere classified  J98 Other respiratory disorders  <b>Note:</b> The above code range excludes J99, "Respiratory disorders in diseases classified elsewhere."</p>
-------------------	--------------------------------------	--	--

Nephrotic syndrome, nephrosis	N00-N07 N17-N19 N25-N27		<p>N00 Acute nephritic syndrome  N01 Rapidly progressive nephritic syndrome  N02 Recurrent and persistent hematuria  N03 Chronic nephritic syndrome  N04 Nephrotic syndrome  N05 Unspecified nephritic syndrome  N06 Isolated proteinuria with specified morphological lesion  N07 Hereditary nephropathy, not elsewhere classified  N17 Acute kidney failure  N18 Chronic kidney disease (CKD)  N19 Unspecified kidney failure  N25 Disorders resulting from impaired renal tubular function  N26 Unspecified contracted kidney  N27 Small kidney of unknown cause</p>
Symptoms, signs, and abnormal clinical and laboratory findings NEC	R00-R99		<p>R00-R09 Symptoms and signs involving the circulatory and respiratory systems  R10-R19 Symptoms and signs involving the digestive system and abdomen  R20-R23 Symptoms and signs involving the skin and subcutaneous tissue  R25-R29 Symptoms and signs involving the nervous and musculoskeletal systems  R30-R39 Symptoms and signs involving the genitourinary system  R40-R46 Symptoms and signs involving cognition, perception, emotional state and behavior  R47-R49 Symptoms and signs involving speech and voice  R50-R69 General symptoms and signs  R70-R79 Abnormal findings on examination of blood, without diagnosis  R80-R82 Abnormal findings on examination of urine, without diagnosis  R83-R89 Abnormal findings on examination of other body fluids, substances and tissues, without diagnosis  R90-R94 Abnormal findings on diagnostic imaging and in function studies, without diagnosis  R97-R97 Abnormal tumor markers  R99-R99 Ill-defined and unknown cause of mortality  <b>Note:</b> R99 is the code often used for injury-related death pending cause-of-death investigation.</p>
Diseases of the heart	I00-I09 I11	Myocardial infarction	<p>I00-I02 Acute rheumatic fever  I05-I09 Chronic rheumatic heart diseases</p>



	I13 I20-I51		<p>I11 Hypertensive heart disease  I13 Hypertensive heart and chronic kidney disease  I20 Angina pectoris  <b>I21 Acute myocardial infarction</b>  <b>I22 Subsequent ST elevation (STEMI) and non-ST elevation (NSTEMI) myocardial infarction</b>  <b>I23 Certain complications following ST elevation (STEMI) and non-ST elevation (NSTEMI) myocardial infarction (within the 28 day period)</b>  <b>I24 Other acute ischemic heart diseases</b>  <b>I25 Chronic ischemic heart disease</b>  I26-I28 Pulmonary heart disease and diseases of pulmonary circulation  I30 Acute pericarditis  I31 Other diseases of pericardium  I32 Pericarditis in diseases classified elsewhere  I33 Acute and subacute endocarditis  I34 Nonrheumatic mitral valve disorders  I35 Nonrheumatic aortic valve disorders  I36 Nonrheumatic tricuspid valve disorders  I37 Nonrheumatic pulmonary valve disorders  I38 Endocarditis, valve unspecified  I39 Endocarditis and heart valve disorders in diseases classified elsewhere  I40 Acute myocarditis  I41 Myocarditis in diseases classified elsewhere  I42 Cardiomyopathy  I43 Cardiomyopathy in diseases classified elsewhere  I44 Atrioventricular and left bundle-branch block  I45 Other conduction disorders  I46 Cardiac arrest  I47 Paroxysmal tachycardia  I48 Atrial fibrillation and flutter  I49 Other cardiac arrhythmias  <b>I50 Heart failure</b>  I51 Complications and ill-defined descriptions of heart disease  <b>Quality metric was 69% of all deaths in category in 2018.<sup>a</sup></b></p>
CBVD	I60-I69	Stroke	<p><b>I60 Nontraumatic subarachnoid hemorrhage</b>  <b>I61 Nontraumatic intracerebral hemorrhage</b></p>

			<b>I62 Other and unspecified nontraumatic intracranial hemorrhage</b> <b>I63 Cerebral infarction</b> <b>I64 Stroke, not specified if hemorrhagic or infarct</b> I65 Occlusion and stenosis of precerebral arteries, not resulting in cerebral infarction I66 Occlusion and stenosis of cerebral arteries, not resulting in cerebral infarction I67 Other cerebrovascular diseases I68 Cerebrovascular disorders in diseases classified elsewhere I69 Sequelae of cerebrovascular disease  <b>Quality metric was 72% of all deaths in category in 2018.<sup>a</sup></b>
--	--	--	---

<sup>a</sup> Based on analysis of 2018 full COD file; deaths from UCOD with the **bolded** diagnoses expressed as a percentage of all deaths in the category.

Appendix 2. Populations and Adjustment Factors<sup>a</sup>

	2014	2015	2016	2017	2018
Population	298,359,744	300,580,055	302,749,939	304,658,917	306,225,413
Adjustment factor <sup>b</sup>	1.03116	1.02355	1.01621	1.00984	1.00468

<sup>a</sup> Population counts are as of July 1 each year and exclude the District of Columbia and three states with incomplete reporting: Connecticut, North Carolina, and Wisconsin. <sup>b</sup> Multiplier used to adjust all death counts to the July 1, 2019, population of 307,657,969.

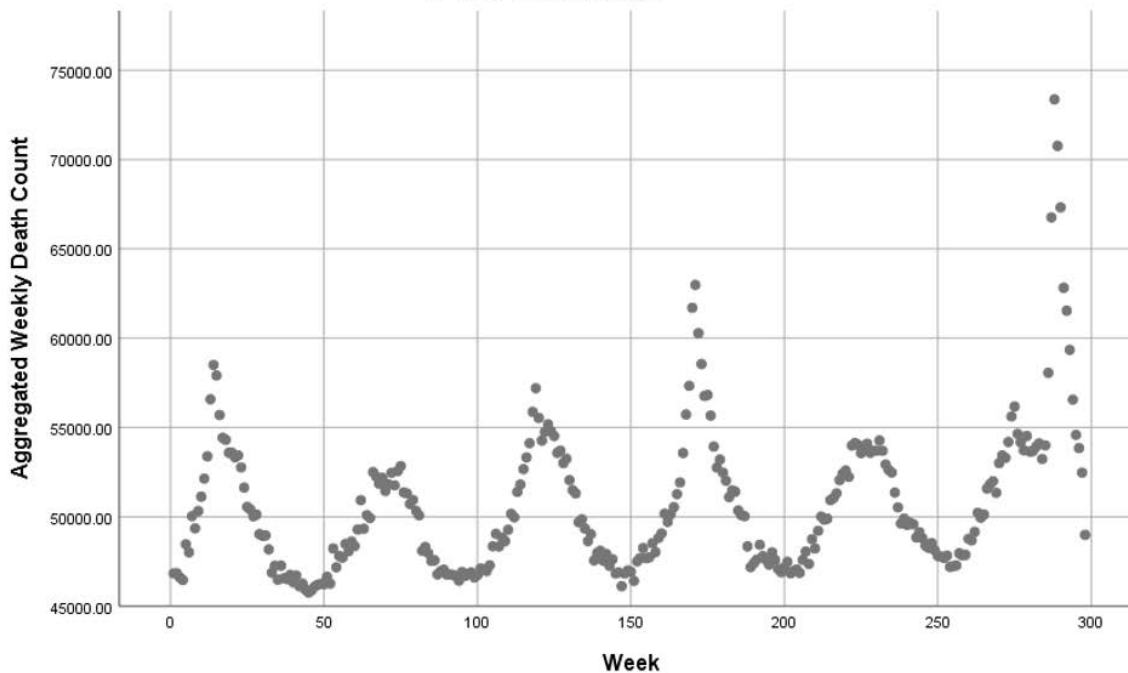
### Appendix 3. Example Reporting Lag Calculations by Category<sup>a</sup>

Weeks lag <sup>b</sup>	Mean (SD) Percentage Change in Reported Deaths from Earlier to Later One-Week Reporting Increment				
	All-Causes	Natural Causes	Heart Disease	Cancer	Chronic LRD
1.6	32.0 (8.2)	30.6 (8.2)	29.2 (8.6)	27.3 (8.6)	27.3 (8.2)
2.6	8.9 (2.6)	8.4 (2.6)	8.8 (2.7)	6.8 (2.2)	8.2 (2.7)
3.6	3.3 (0.6)	2.9 (0.5)	3.7 (0.6)	2.3 (0.5)	3.1 (0.4)
4.6	1.7 (0.3)	1.3 (0.2)	2.0 (0.3)	1.1 (0.2)	1.7 (0.5)
5.6	1.0 (0.2)	0.7 (0.2)	1.4 (0.2)	0.6 (0.1)	1.0 (0.3)
6.6	0.6 (0.1)	0.3 (0.1)	0.9 (0.2)	0.3 (0.1)	0.5 (0.2)
7.6	0.4 (0.1)	0.2 (0.1)	0.7 (0.1)	0.3 (0.1)	0.3 (0.1)
8.6	0.3 (0.1)	0.1 (0.1)	0.5 (0.1)	0.2 (0.0)	0.2 (0.1)
9.6	0.2 (0.1)	0.1 (0.1)	0.4 (0.1)	0.2 (0.1)	0.2 (0.1)
10.6	0.2 (0.0)	0.0 (0.1)	0.3 (0.1)	0.2 (0.1)	0.2 (0.1)
11.6	0.1 (0.0)	0.0 (0.1)	0.3 (0.1)	0.1 (0.0)	0.2 (0.1)
12.6	0.1 (0.1)	0.0 (0.1)	0.3 (0.1)	0.1 (0.1)	0.2 (0.1)
13.6	0.1 (0.2)	0.0 (0.2)	0.3 (0.2)	0.1 (0.2)	0.1 (0.2)
14.6	0.2 (0.3)	0.1 (0.3)	0.3 (0.3)	0.1 (0.3)	0.2 (0.4)
15.6	0.1 (0.1)	0.0 (0.2)	0.2 (0.2)	0.1 (0.1)	0.1 (0.2)
16.6	0.1 (0.1)	0.0 (0.1)	0.2 (0.1)	0.1 (0.0)	0.1 (0.1)
Compounded adjustment multipliers using mean values (shown through 8.6 weeks) <sup>c</sup>					
2.6 <sup>b</sup>	1.183	1.146	1.217	1.128	1.172
3.6	1.086	1.058	1.119	1.057	1.083
4.6	1.051	1.028	1.078	1.033	1.051
5.6	1.034	1.014	1.057	1.022	1.034
6.6	1.024	1.008	1.043	1.016	1.024
7.6	1.018	1.005	1.034	1.013	1.018
8.6	1.014	1.003	1.027	1.010	1.015
Compounded adjustment multipliers using maximum values (shown through 8.6 weeks) <sup>c</sup>					
2.6 <sup>b</sup>	1.261	1.230	1.238	1.202	1.279
3.6	1.118	1.094	1.113	1.089	1.128
4.6	1.075	1.055	1.074	1.056	1.088
5.6	1.054	1.038	1.054	1.042	1.064
6.6	1.042	1.029	1.046	1.034	1.051
7.6	1.035	1.025	1.040	1.029	1.044
8.6	1.030	1.022	1.035	1.025	1.038

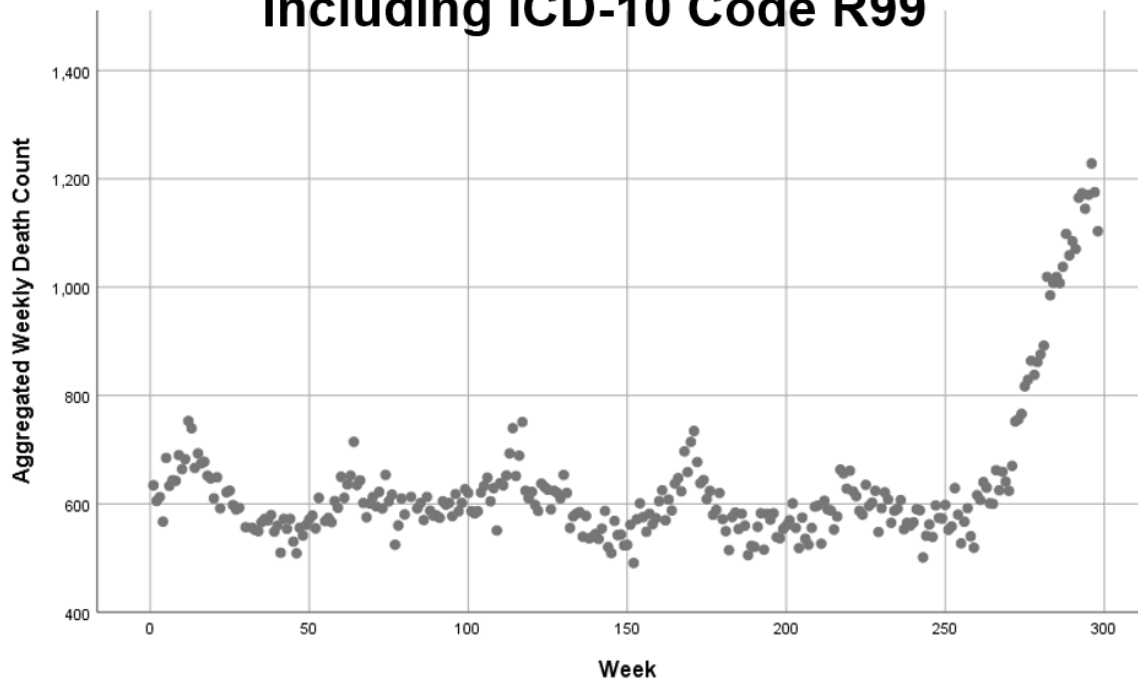
<sup>a</sup> Although only all-cause, natural-cause, and top 3 causes of death are shown here, all calculations were performed separately for all diagnostic categories. Each lag calculation is based on 6-7 combinations of reporting week/update week combinations beginning with reporting week ending February 1, 2020 and ending June 20, 2020, for 7 weekly updates beginning May 27, 2020, and ending July 8, 2020. <sup>b</sup> Weeks elapsed from end of reporting week to date of update. Because one state reported no deaths during the week ending June 27, its data could not be used; therefore, the smallest lag time in the file was 2.6 weeks (from week end June 20 to reporting date July 8). <sup>c</sup> Although multipliers are shown only through 8.6 weeks, adjustments were made through 16.6-week lags. SD-standard deviation.

Appendix 4. Population-Adjusted and Lag-Adjusted Weekly Death Counts, All-Cause, Not Elsewhere Classified, and Top 8 Natural Causes of Death, October 2014 through June 20, 2020, Reported as of July 8, 2020

### All-Cause

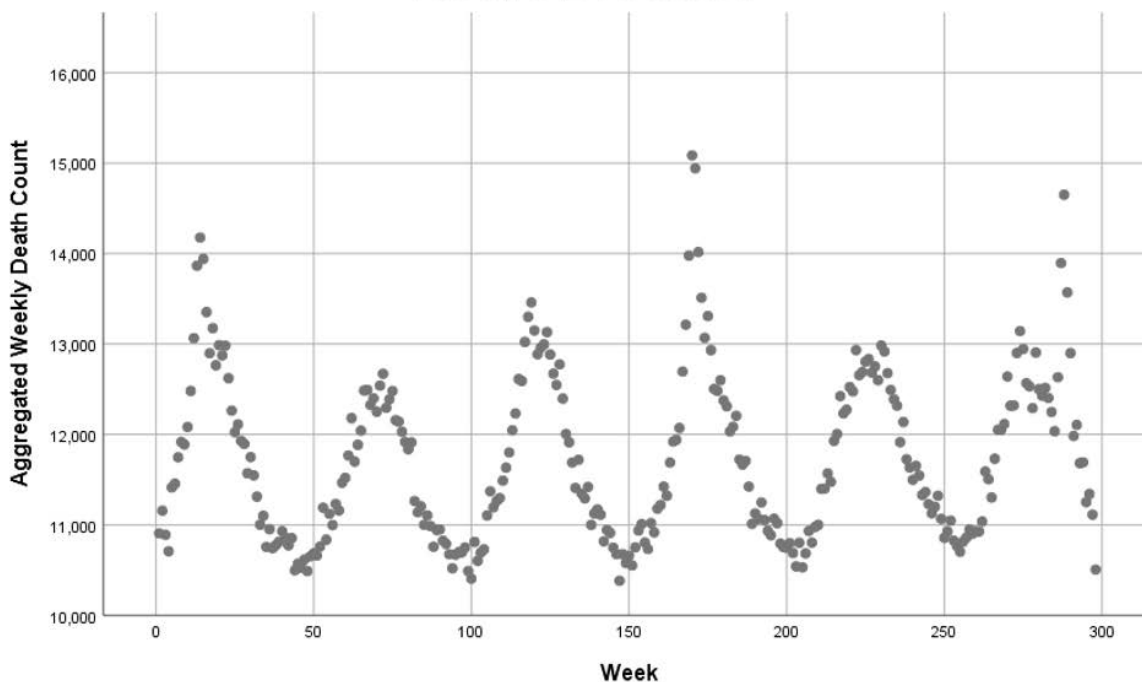


### Deaths Not Elsewhere Classified, Including ICD-10 Code R99

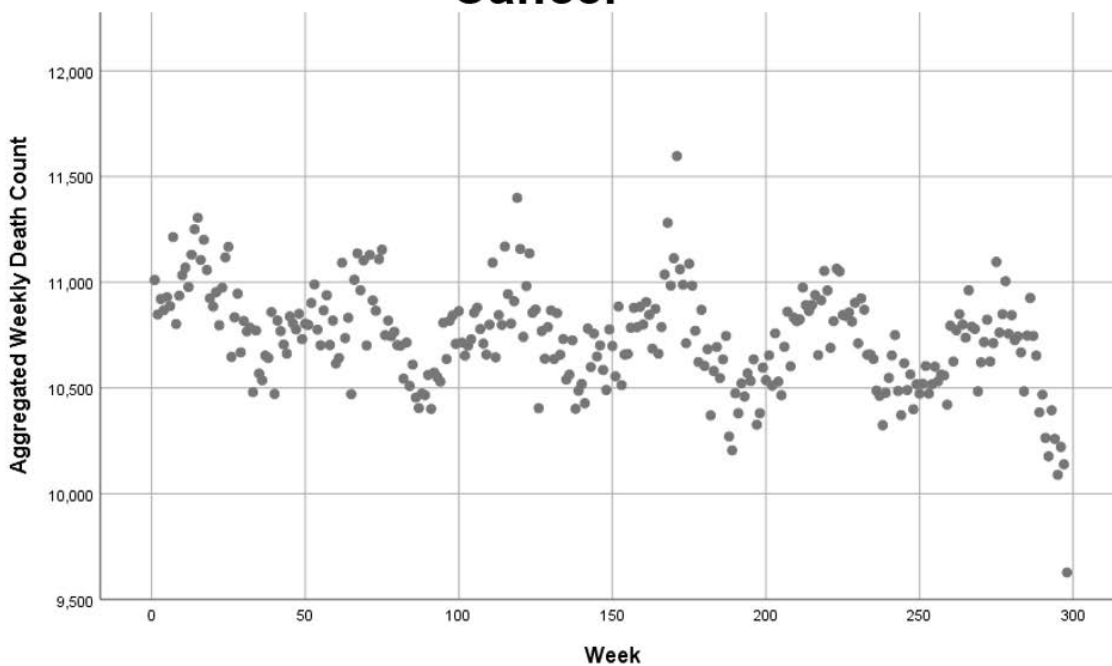


Appendix 4. Population-Adjusted and Lag-Adjusted Weekly Death Counts, All-Cause, Not Elsewhere Classified, and Top 8 Natural Causes of Death, October 2014 through June 20, 2020, Reported as of July 8, 2020, continued

## Heart Disease

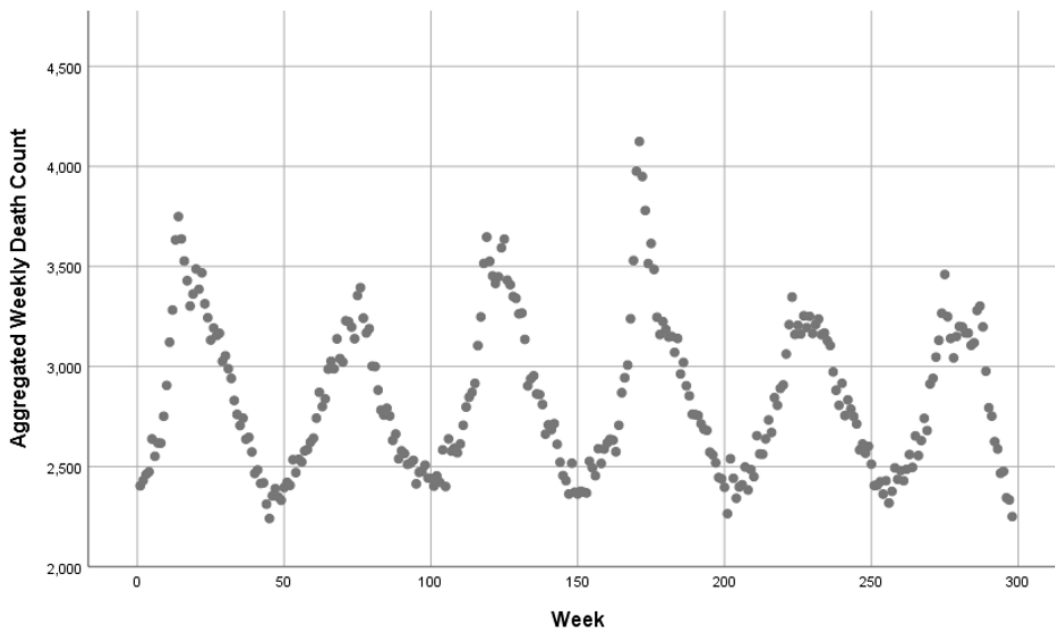


## Cancer

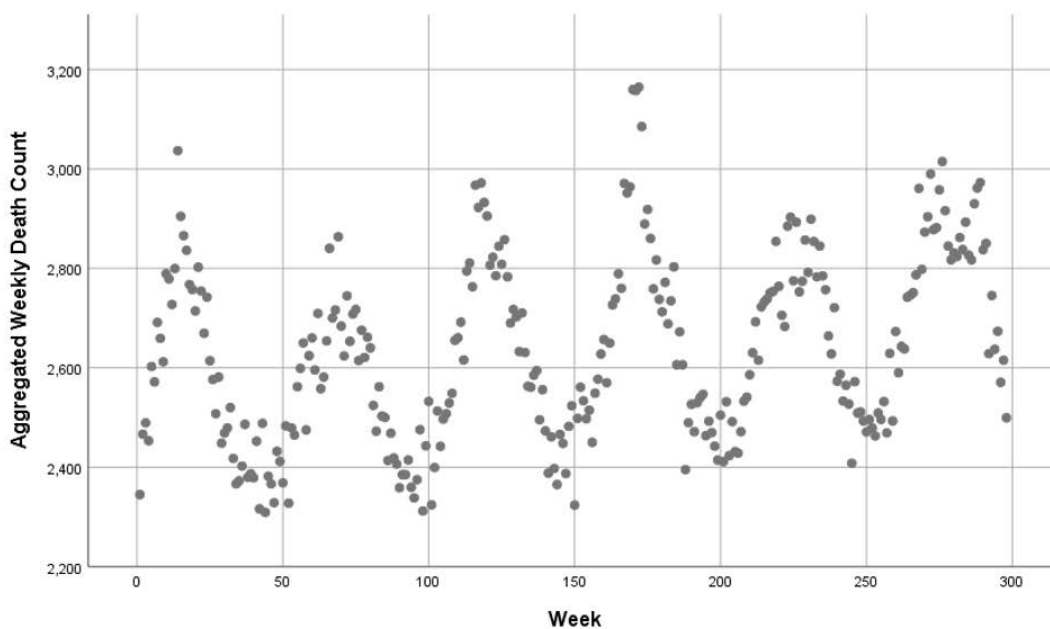


Appendix 4. Population-Adjusted and Lag-Adjusted Weekly Death Counts, All-Cause, Not Elsewhere Classified, and Top 8 Natural Causes of Death, October 2014 through June 20, 2020, Reported as of July 8, 2020, continued

### Chronic Lower Respiratory Disease

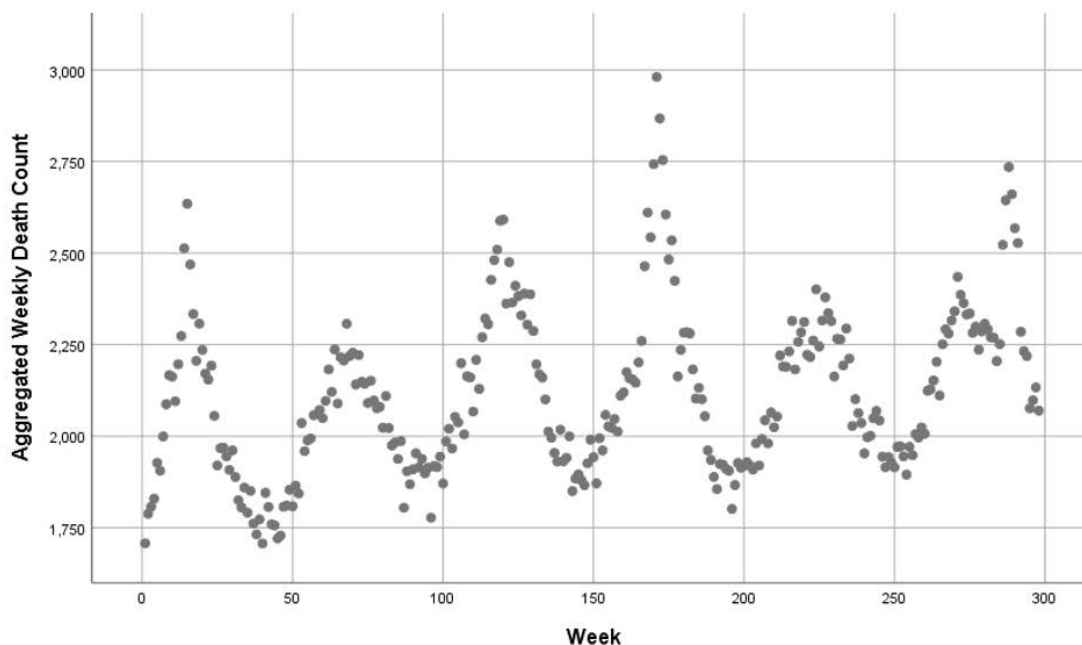


### Cerebrovascular Disease

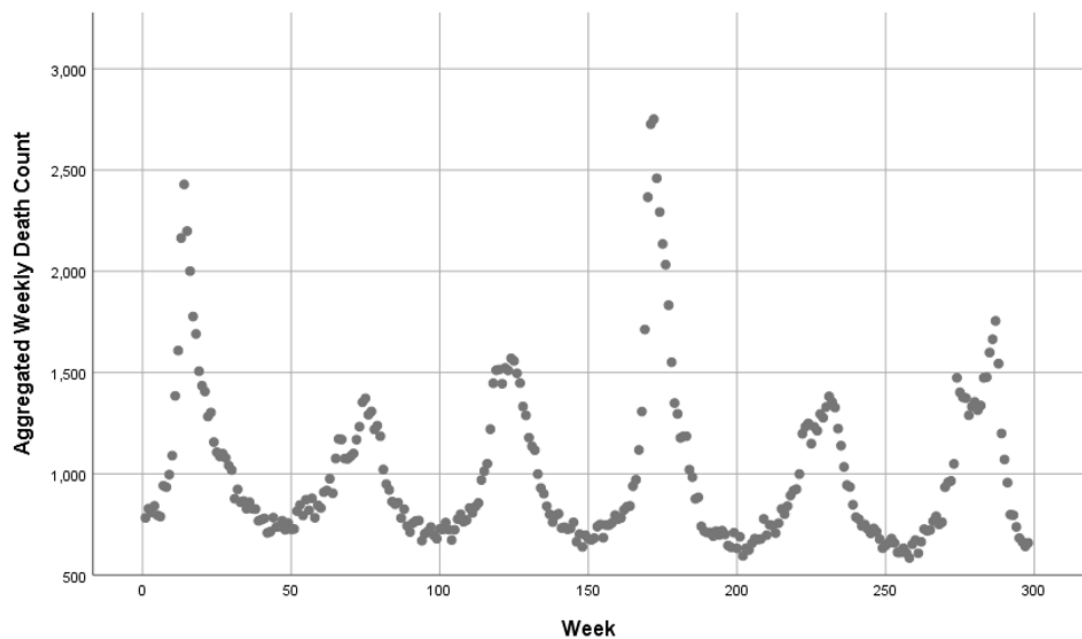


Appendix 4. Population-Adjusted and Lag-Adjusted Weekly Death Counts, All-Cause, Not Elsewhere Classified, and Top 8 Natural Causes of Death, October 2014 through June 20, 2020, Reported as of July 8, 2020, continued

### Alzheimer's Disease



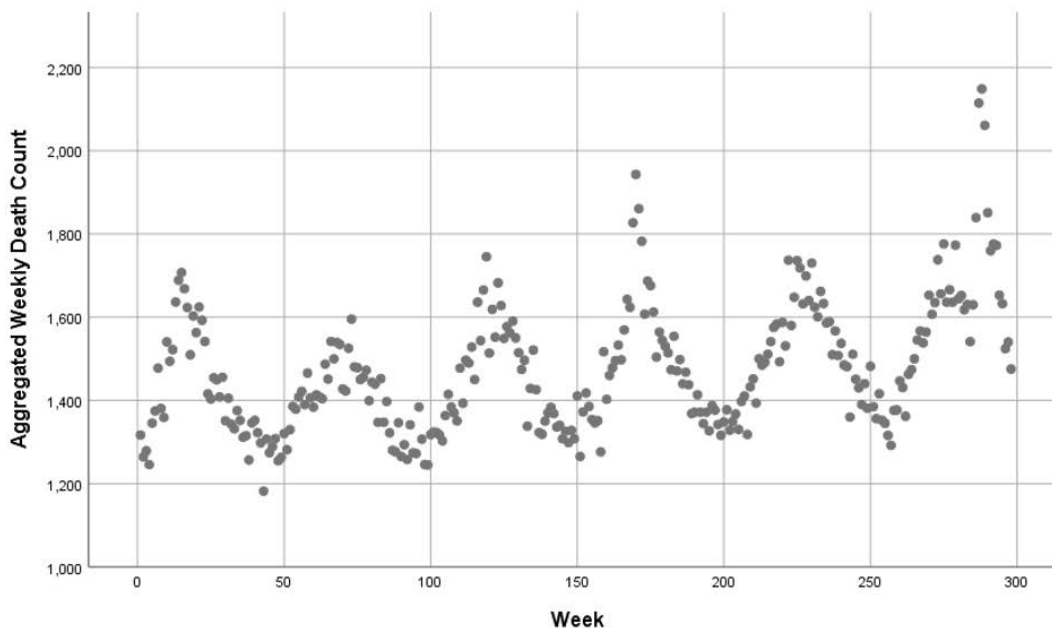
### Influenza/Pneumonia



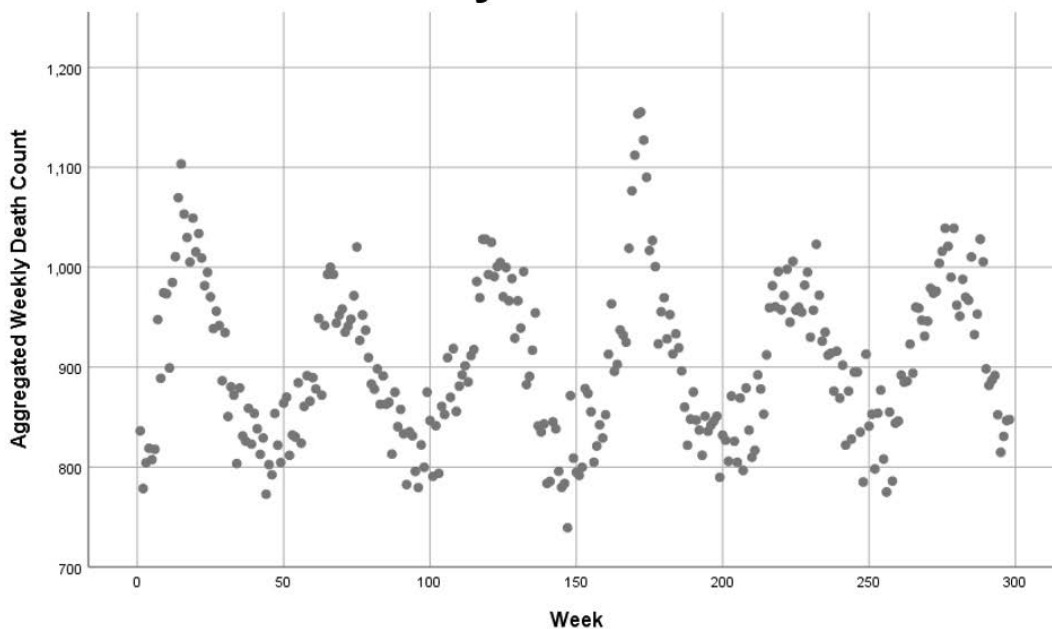


Appendix 4. Population-Adjusted and Lag-Adjusted Weekly Death Counts, All-Cause, Not Elsewhere Classified, and Top 8 Natural Causes of Death, October 2014 through June 20, 2020, Reported as of July 8, 2020, continued

## Diabetes

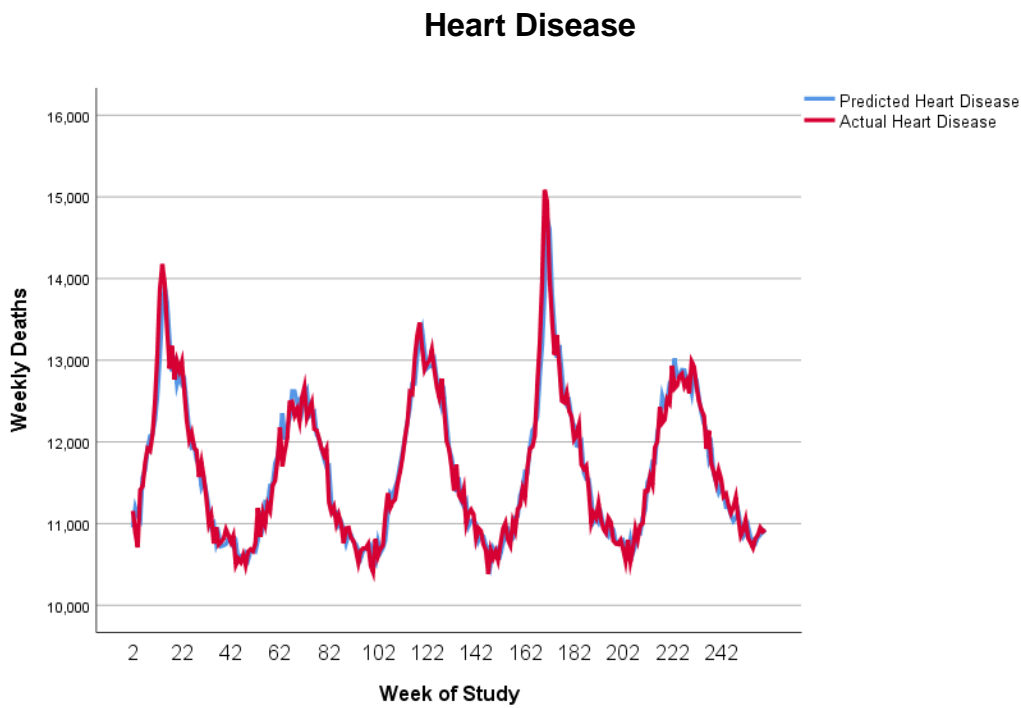
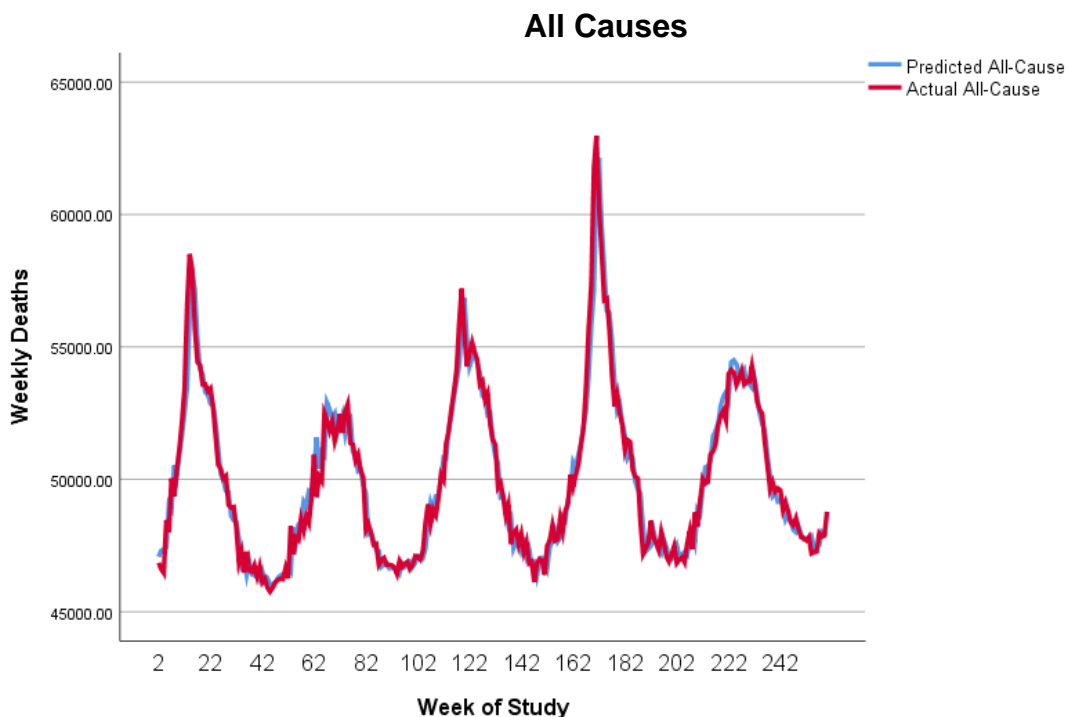


## Kidney Disease

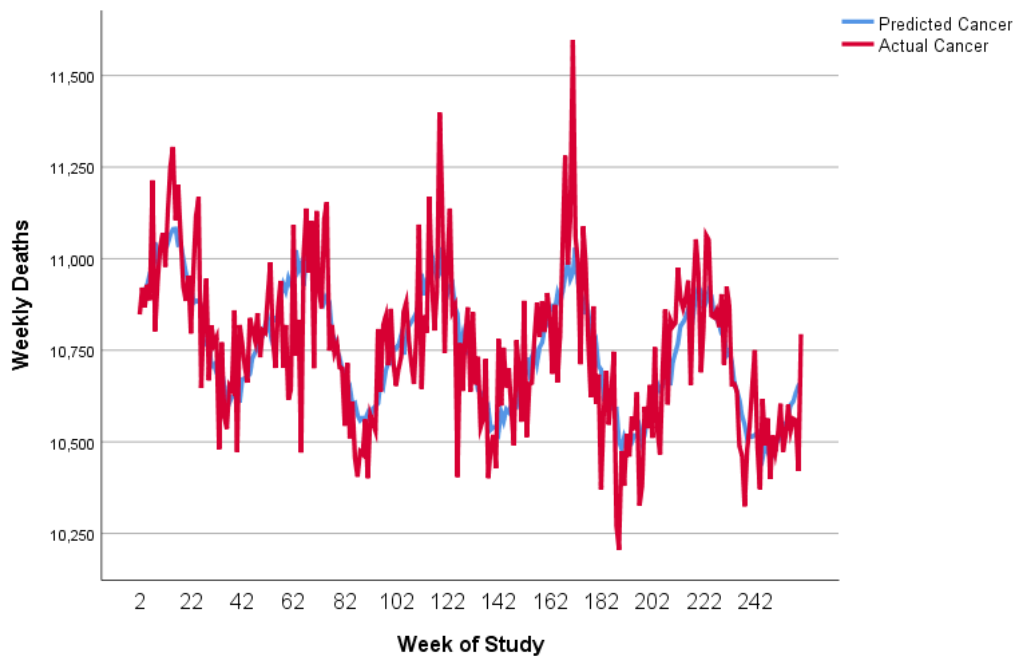


Notes: Week 1 begins September 29-October 5, depending on year. Week 285 (March 15, 2020) is the approximate pandemic start. Week 288 (April 5, 2020) corresponds to the issuance of NCHS guidance stating laboratory test was recommended but not required to name SARS-CoV-2 as the underlying cause of death. NCHS=National Center for Health Statistics; SARS-CoV-2=severe acute respiratory syndrome coronavirus 2.

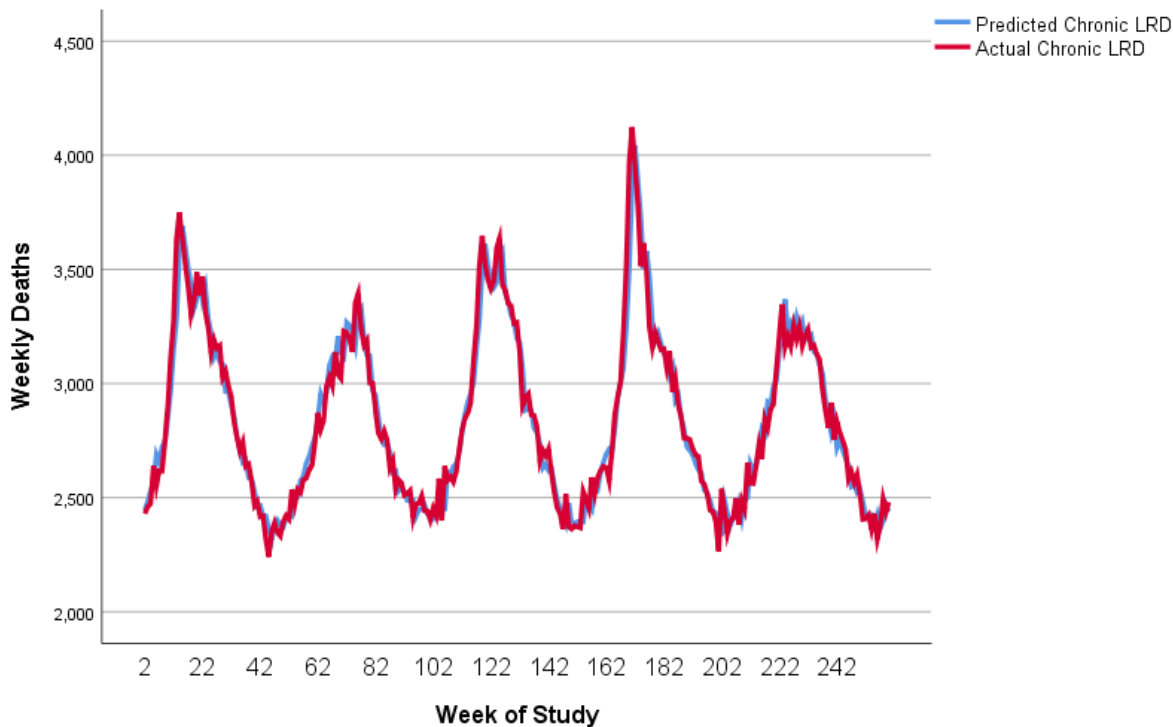
## Appendix 5. Time Series Model-Predicted Versus Actual Weekly Deaths, Calibration Period, October 2014 through September 2019, Deaths from All Causes and Top 3 Specific Natural Causes



### Cancer



### Chronic Lower Respiratory Disease



Appendix 6. Summary of Projected Versus Actual Population-Adjusted Death Counts by Pandemic Time Period, Reported Through June 20 as of July 8, 2020, Time Series Analysis

	Actual	Projected, Using First-Order Autoregression				Projected, Allowing Violation of Nonautocorrelation Assumption			
		Point Estimate	95% CI Lower	95% CI Upper	Difference	Point Estimate	95% CI Lower	95% CI Upper	Difference
<i>Pandemic awareness (Jan 19-Mar 14)</i>									
All-cause	431,021	433,187	413,231	454,356	-2,166	440,203	433,804	446,427	-9,182
Heart disease	99,822	100,860	92,064	110,497	-1,038	103,615	100,686	106,539	-3,793
Cancer	86,076	86,098	71,228	104,066	-22	86,076	86,086	83,555	88,637
CLRD	25,171	25,707	22,790	28,839	-536	26,839	25,303	28,448	-1,668
NEC <sup>a</sup>	7,344	4,892	4,310	5,551	2,452	4,892	4,310	5,551	2,452
Total QM <sup>b</sup>	117,018	117,984	104,259	133,520	-966	118,862	116,000	122,010	-1,844
Total some QM <sup>b</sup>	133,600	134,296	126,033	143,168	-696	137,916	134,373	141,185	-4,316
Total non-QM <sup>b</sup>	46,432	47,055	41,806	53,226	-623	48,478	46,450	50,616	-2,046
<i>Pandemic height (Mar 15-May 16)</i>									
All-cause	453,098	431,265	410,994	452,831	21,833	365,155	360,482	369,443	87,943
Heart disease	91,663	89,345	81,864	97,511	2,318	84,971	82,912	87,003	6,692
Cancer	74,190	74,053	61,644	88,954	137	74,038	72,161	75,887	152
CLRD	21,420	21,503	19,278	23,845	-83	21,796	20,731	22,890	-376
NEC <sup>a</sup>	7,377	3,869	3,477	4,309	3,508	7,377	3,869	3,477	4,309
Total QM <sup>b</sup>	100,937	100,822	89,609	113,449	115	100,673	98,668	102,918	264
Total some QM <sup>b</sup>	121,649	118,886	111,974	126,223	2,763	111,679	109,255	113,985	9,970
Total non-QM <sup>b</sup>	44,462	42,426	37,874	47,784	2,036	39,258	37,860	40,704	5,204
<i>Late pandemic (May 17-June 20)</i>									
All-cause	387,338	387,489	370,653	405,326	-151	344,374	340,345	348,142	42,964
Heart disease	79,692	80,005	73,870	86,650	-313	79,143	77,368	80,897	549
Cancer	70,906	72,890	61,003	87,089	-1,984	73,160	71,435	74,860	-2,254
CLRD	17,082	17,915	16,282	19,606	-833	19,097	18,231	19,976	-2,015
NEC <sup>a</sup>	8,160	3,828	3,468	4,231	4,332	3,828	3,468	4,231	4,332
Total QM <sup>b</sup>	92,602	94,880	84,852	106,084	-2,278	96,700	94,924	98,653	-4,098
Total some QM <sup>b</sup>	103,039	103,526	98,119	109,254	-487	102,376	100,362	104,430	663
Total non-QM <sup>b</sup>	37,464	37,286	33,645	41,510	178	36,095	34,904	37,313	1,369

<sup>a</sup> QM diagnoses are cancer, CLRD, and septicemia. Some QM (56%-81% of reported category) diagnoses are cerebrovascular disease, heart disease, and influenza/pneumonia. No QM diagnoses are Alzheimer's disease, diabetes, and other (mostly acute) respiratory infections. CI=confidence interval; CLRD=chronic lower respiratory disease; NEC=not elsewhere classified; QM=quality metric.

## References

1. Gounder AP, Boon ACM. Influenza pathogenesis: The role of host factors on severity of disease. *J Immunol*. 2019;202(2):341-50.
2. Chiappetta S, Sharma AM, Bottino V, Stier C. COVID-19 and the role of chronic inflammation in patients with obesity. *Int J Obes (Lond)*. 2020 May 14;1-3. doi: 10.1038/s41366-020-0597-4. Online ahead of print.
3. Boccia S, Ricciardi W, Ioannidis JPA. What other countries can learn from Italy during the COVID-19 pandemic. *JAMA Intern Med*. 2020 April 7. doi:10.1001/jamainternmed.2020.1447. Published online ahead of print.
4. U.S. Centers for Disease Control and Prevention. Weekly updates by select demographic and geographic characteristics. Provisional death counts for coronavirus disease (COVID-19). Available at [https://www.cdc.gov/nchs/nvss/vsrr/covid\\_weekly/index.htm](https://www.cdc.gov/nchs/nvss/vsrr/covid_weekly/index.htm).
5. Luna CM, Palma I, Niederman MS, Membriani E, Giovini V, Wiemken TL, et al. The impact of age and comorbidities on the mortality of patients of different age groups admitted with community-acquired pneumonia. *Ann Am Thorac Soc*. 2016;13(9):1519-26.
6. Onder G, Rezza G, Brusaferro S. Case-fatality rate and characteristics of patients dying in relation to COVID-19 in Italy. *JAMA*. 2020;323(18):1775-6.
7. National Vital Statistics System. Guidance for certifying COVID-19 deaths. March 4, 2020. Available at <https://www.cdc.gov/nchs/data/nvss/coronavirus/alert-1-guidance-for-certifying-covid-19-deaths.pdf>.
8. National Vital Statistics System. Guidance for certifying deaths due to coronavirus disease 2019 (COVID-19). April 2020. Available at <https://www.cdc.gov/nchs/data/nvss/vsrg/vsrg03-508.pdf>.
9. Wexelman BA, Eden E, Rose KM. Survey of New York City resident physicians on cause-of-death reporting, 2010. *Prev Chronic Dis*. 2013;10:120288.
10. Falci L, Argov E, Van Wye G, Plitt M, Soto A, Huynh M. Examination of cause-of-death data quality among New York City deaths due to cancer, pneumonia, or diabetes from 2010 to 2014. *Am J Epidemiol*. 2018;187(1):144-52.
11. National Center for Health Statistics. Excess deaths associated with COVID-19. May 29, 2020. Available at [https://www.cdc.gov/nchs/nvss/vsrr/covid19/excess\\_deaths.htm](https://www.cdc.gov/nchs/nvss/vsrr/covid19/excess_deaths.htm).
12. Weinberger DM, Chen J, Cohen T, et al. Estimation of excess deaths associated with the COVID-19 pandemic in the United States, March to May 2020. *JAMA Intern Med*. 2020. doi: 10.1001/jamainternmed.2020.3391. Online ahead of print.
13. Woolf SH, Chapman DA, Sabo RT, Weinberger DM, Hill, L. Excess deaths from COVID-19 and other causes, March-April 2020. *JAMA*. 2020. doi: 10.1001/jama.2020.11787. Online ahead of print.
14. Piccininni M, Rohmann JL, Foresti L, Lurani C, Kurth T. Use of all-cause mortality to quantify the consequences of covid-19 in Nembro, Lombardy: descriptive study. *BMJ*. 2020;369:m1835.
15. Feuer W. New York City struggles to get accurate coronavirus fatality count as more people die at home. *CNBC*. April 15, 2020. Available at:

- <https://www.cnbc.com/2020/04/15/coronavirus-new-york-city-struggles-to-get-accurate-fatality-count-as-more-people-die-at-home.html>.
16. Marquez M, Moghe S. Inside a Brooklyn hospital that is overwhelmed with Covid-19 patients and deaths. CNN. March 31, 2020. Available at <https://www.cnn.com/2020/03/30/us/brooklyn-hospital-coronavirus-patients-deaths/index.html>.
  17. McIntyre RS, Lee Y. Preventing suicide in the context of the COVID-19 pandemic. *World Psychiatry*. 2020;19(2):250-1.
  18. Killgore WDS, Cloonan SA, Taylor EC, Dailey NS. Loneliness: a signature mental health concern in the era of COVID-19. *Psychiatry Res*. 2020. 290:113117. doi: 10.1016/j.psychres.2020.113117. Online ahead of print.
  19. Anurudran A, Yared L, Comrie C, Harrison K, Burke T. Domestic violence amid COVID-19. *Int J Gynaecol Obstet*. 2020 May 30. doi: 10.1002/ijgo.13247. Published online ahead of print.
  20. Becker WC, Fiellin DA. When epidemics collide: coronavirus disease 2019 (COVID-19) and the opioid crisis. *Ann Intern Med*. 2020;M20-1210.
  21. Kansagra AP, Goyal MS, Hamilton S, Albers GW. Collateral effect of Covid-19 on stroke evaluation in the United States. *N Engl J Med*. 2020 May 8. doi: 10.1056/NEJMc2014816. Online ahead of print.
  22. Solomon MD, McNulty EJ, Rana JS, Leong TK, Lee C, Sung SH, et al. The Covid-19 pandemic and the incidence of acute myocardial infarction. *N Engl J Med*. 2020 May 19. doi: 10.1056/NEJMc2015630. Published online ahead of print.
  23. Macmillan C. Hospitals report fewer heart attacks and strokes amid COVID-19. *Yale Medicine*. May 6, 2020. Available at <https://www.yalemedicine.org/stories/hospitals-covid-fears/>.
  24. Rose J. U.S. field hospitals stand down, most without treating any COVID-19 patients. NPR. May 7, 2020. Available at <https://www.npr.org/2020/05/07/851712311/u-s-field-hospitals-stand-down-most-without-treating-any-covid-19-patients>.
  25. Simkins JD. Hospital ship Comfort departs NYC, having treated fewer than 200 patients. *NavyTimes*. April 30, 2020. Available at <https://www.navytimes.com/news/your-navy/2020/04/30/hospital-ship-comfort-departs-nyc-having-treated-fewer-than-200-patients/>.
  26. Tognotti E. Lessons from the history of quarantine, from plague to influenza A. *Emerg Infect Dis*. 2013;19(2):254-9.
  27. Rothstein MA, Alcade MG, Elster NR, et al. Quarantine and isolation: lessons learned from SARS. Institute for Bioethics, Health Policy and Law. November 2003. Available at: [https://biotech.law.lsu.edu/blaw/cdc/SARS\\_REPORT.pdf](https://biotech.law.lsu.edu/blaw/cdc/SARS_REPORT.pdf).
  28. Terris DD, Litaker DG. Data quality bias: an underrecognized source of misclassification in pay-for-performance reporting? *Qual Manag Health Care*. 2008;17(1):19-26.
  29. Park YT, Lee J, Lee J. Association between health information technology and case mix index. *Healthc Inform Res*. 2017;23(4):322-7.
  30. Sabbatini AK, Wright B. Excluding observation stays from readmission rates—what quality measures are missing. *N Engl J Med*. 2018;378:2062-5.

31. Hawkes N. Patient coding and the ratings game. *BMJ*. 2010;340:950-2.
32. McGivern L, Shulman L, Carney JK, Shapiro S, Bundock E. Death certification errors and the effect on mortality statistics. *Public Health Rep*. 2017;132(6):669-75.
33. Schuppener LM, Olson K, Brooks EG. Death certification: errors and interventions. *Clin Med Res*. 2020;18(1):21-6.
34. Yale New Haven Health Services Corporation – Center for Outcomes Research and Evaluation. 2020 condition-specific mortality measures updates and specifications report. March 2020. Available at [https://www.qualitynet.org/files/5ec532166c4799002344a0a1?filename=2020\\_CSM\\_v1.0.pdf](https://www.qualitynet.org/files/5ec532166c4799002344a0a1?filename=2020_CSM_v1.0.pdf).
35. Agency for Healthcare Research and Quality. Inpatient quality indicators technical specifications. 2019. Available at [https://www.qualityindicators.ahrq.gov/Modules/IQI\\_TechSpec\\_ICD10\\_v2019.aspx](https://www.qualityindicators.ahrq.gov/Modules/IQI_TechSpec_ICD10_v2019.aspx).
36. Centers for Medicare & Medicaid Services (CMS). Specifications manual for national hospital inpatient quality measures. Available at: <https://www.qualitynet.org/files/5d55ad39c84b454088432412?filename=HIQR-SpecsMan-Jan2020-v5-7-ZIP.zip>.
37. Doerfler ME, D'Angelo JD, Jacobsen D, Jarrett MP, Kabcenell AI, Masick KD, et al. Methods for reducing sepsis mortality in emergency departments and inpatient units. *Jt Comm J Qual Patient Saf*. 2015;41(5):205-11.
38. Goldberg P, Conti RM. Problems with public reporting of cancer quality outcomes data. *J Oncol Pract*. 2014;10(3):2015-8.
39. Social Security Administration. Actuarial life table, 2017. Available at: <https://www.ssa.gov/oact/STATS/table4c6.html>.
40. Jia H, Zack MM, Thompson WW. The effects of diabetes, hypertension, asthma, heart disease, and stroke on quality-adjusted life expectancy. *Value Health*. 2013;16(1):140-7.
41. Ioannidis JPA, Axfors C, Contopoulos-Ioannidis DG. Population-level COVID-19 mortality risk for non-elderly individuals overall and for non-elderly individuals without underlying diseases in pandemic epicenters. *Environ Res*. 2020;188:109890.
42. Weinstein M, McGuira A, Torrance G. QALYs: the basics. *Value Health* 2009;12(Suppl. 1):S5-9.
43. Spencer MR, Ahmad F. Timeliness of death certificate data for mortality surveillance and provisional estimates. *Vital Statistics Rapid Release*. 2016;001.
44. Minino A. Coding and classification of causes of death in accordance with the *Tenth Revision of the International Classification of Diseases*. National Center for Health Statistics. 2012. Available at: [https://www.cdc.gov/nchs/ppt/nchs2012/li-14\\_minino.pdf](https://www.cdc.gov/nchs/ppt/nchs2012/li-14_minino.pdf).
45. U.S. Census Bureau. State population totals and components of change: 2010-2019. Available at: <https://www.census.gov/data/tables/time-series/demo/popest/2010s-state-total.html>.

46. Bernal JL, Cummins S, Gasparrini A. Interrupted time series regression for the evaluation of public health interventions: a tutorial. *Int J Epidemiol*. 2017;46(1):348-55.
47. Bhaskaran K, Gasparrini A, Hajat S, Smeeth L, Armstrong B. Time series regression studies in environmental epidemiology. *Int J Epidemiol*. 2013;42:1187-95.
48. Ducharme J. News coverage of coronavirus in 2020 is very different than it was for Ebola in 2018. *Time*. Feb 7, 2020. Available at: <https://time.com/5779872/coronavirus-ebola-news-coverage/>.
49. U.S. Centers for Disease Control & Prevention. Coronavirus disease 2019. Cases in the U.S. Available at: <https://www.cdc.gov/coronavirus/2019-ncov/cases-updates/cases-in-us.html>.
50. Tabachnick BG, Fidell LS. *Using Multivariate Statistics*. Essex: Pearson. 2014.
51. Kamp J, Overberg P. Coronavirus pandemic led to surge in Alzheimer's deaths. *Wall Street Journal*. June 28, 2020. Available at: <https://www.wsj.com/articles/coronavirus-pandemic-led-to-surge-in-alzheimers-deaths-11593345601>.
52. Heron M. Deaths: leading cause for 2017. National Vital Statistics System. June 24, 2019. Available at: [https://www.cdc.gov/nchs/data/nvsr/nvsr68/nvsr68\\_06-508.pdf](https://www.cdc.gov/nchs/data/nvsr/nvsr68/nvsr68_06-508.pdf).
53. Gill JR, DeJoseph ME. The importance of proper death certification during the COVID-19 pandemic. *JAMA*. 2020;324(1):27-8.
54. Express Scripts. America's state of mind report. April 16, 2020. Available at: <https://www.express-scripts.com/corporate/americas-state-of-mind-report>.
55. Twenge JM, Joiner TE. U.S. Census Bureau-assessed prevalence of anxiety and depressive symptoms in 2019 and during the 2020 COVID-19 pandemic. *Depress Anxiety*. 2020 Jul 16. doi: 10.1002/da.23077.
56. National Heart, Lung, and Blood Institute. Looking forward: understanding the long-term effects of COVID-19. June 3, 2020. Available at: <https://www.nhlbi.nih.gov/news/2020/looking-forward-understanding-long-term-effects-covid-19>.
57. Mustian J, Condon B. Blame game? Cuomo takes heat over NY nursing home study. *U.S. News*. July 14, 2020. Available at: <https://www.usnews.com/news/health-news/articles/2020-07-14/blame-game-cuomo-takes-heat-over-ny-nursing-home-study>.
58. Santoli JM, Lindley MC, DeSilva MB, et al. Effects of the COVID-19 pandemic on routine pediatric vaccine ordering and administration—United States, 2020. *MMWR Morb Mortal Wkly Rep*. 2020;69(19):591-3.
59. Basu A. Estimating the infection fatality rate among symptomatic COVID-19 cases in the United States. *Health Aff (Millwood)*. 2020;39(7). doi: 10.1377/hlthaff.2020.00455. Online ahead of print.
60. Centers for Disease Control and Prevention. Frequently asked questions about estimated flu burden. November 5, 2018. Available at: <https://www.cdc.gov/flu/about/burden/faq.htm>.