

1 Asymptomatic SARS-CoV-2 infections: a living systematic review and 2 meta-analysis

3
4 Diana Buitrago-Garcia (0000-0001-9761-206X),¹ Dianne Egli-Gany (0000-0002-4725-0475),¹
5 Michel J Counotte (0000-0003-1039-6873),¹ Stefanie Hossmann (0000-0003-1600-5925),² Hira Imeri
6 (0000-0002-0412-1649),¹ Mert Aziz Ipekci (0000-0002-0260-9691),¹ Georgia Salanti (0000-0002-
7 3830-8508),¹ Nicola Low (0000-0003-4817-8986).

8 1. Institute of Social and Preventive Medicine, University of Bern, Bern, Switzerland

9 2. Clinical Trials Unit, University of Bern, Bern, Switzerland

10 Corresponding author: Nicola Low nicola.low@ispm.unibe.ch

11 **Changes from version 2**

- 12 ■ Search updated 10.06.2020, total number of included studies increased from 37 to 94
- 13 ■ Protocol updated at <https://osf.io/9ewys/>
- 14 ■ New analyses
 - 15 ○ Review question 1, prediction intervals added for each study setting
 - 16 ○ Meta-analysis of secondary attack rate from asymptomatic and pre-symptomatic index
 - 17 cases compared with symptomatic
 - 18 ○ Sensitivity analysis for review question 1, omitting preprints
- 19 ■ Conclusions unchanged

20

21

22 ABSTRACT

23 BACKGROUND

24 There is disagreement about the level of asymptomatic severe acute respiratory syndrome
25 coronavirus 2 (SARS-CoV-2) infection. We conducted a living systematic review and meta-analysis to
26 address three questions: 1. amongst people who become infected with SARS-CoV-2, what
27 proportion does not experience symptoms at all during their infection? 2. Amongst people with
28 SARS-CoV-2 infection who are asymptomatic when diagnosed, what proportion will develop
29 symptoms later? 3. What proportion of SARS-CoV-2 transmission is accounted for by people who are
30 either asymptomatic throughout infection, or pre-symptomatic?

31 METHODS AND FINDINGS

32 We searched PubMed, Embase, bioRxiv and medRxiv using a database of SARS-CoV-2 literature that
33 is updated daily, on 25 March 2020, 20 April 2020 and 10 June 2020. Studies of people with SARS-
34 CoV-2 diagnosed by reverse transcriptase PCR that documented follow-up and symptom status at
35 the beginning and end of follow-up, or modelling studies were included. One reviewer extracted
36 data and a second verified the extraction, with disagreement resolved by discussion or a third
37 reviewer. Risk of bias in empirical studies was assessed with an adapted checklist for case series and
38 the relevance and credibility of modelling studies were assessed using a published checklist. We
39 included a total of 94 studies. The overall estimate of the proportion of people who become infected
40 with SARS-CoV-2 and remain asymptomatic throughout infection was 20% (95% CI 17-25) with a
41 prediction interval of 3-67% in 79 studies that addressed this review question. There was some
42 evidence that biases in the selection of participants influence the estimate. In seven studies of
43 defined populations screened for SARS-CoV-2 and then followed, 31% (95% CI 26-37%, prediction
44 interval 24-38%) remained asymptomatic. The proportion of people that is pre-symptomatic could
45 not be summarised, owing to heterogeneity. The secondary attack rate was slightly lower in contacts
46 of people with asymptomatic infection than those with symptomatic infection (relative risk 0.35,
47 95% CI 0.10-1.27). Modelling studies fit to data found a higher proportion of all SARS-CoV-2

48 infections resulting from transmission from pre-symptomatic individuals than from asymptomatic
49 individuals. Limitations of the review include that most included studies were not designed to
50 estimate the proportion of asymptomatic SARS-CoV-2 infections and were at risk of selection biases,
51 we did not consider the possible impact of false negative RT-PCR results, which would underestimate
52 the proportion of asymptomatic infections, and that the database does not include all sources.

53 CONCLUSIONS

54 The findings of this living systematic review of publications early in the pandemic suggest that most
55 SARS-CoV-2 infections are not asymptomatic throughout the course of infection. The contribution of
56 pre-symptomatic and asymptomatic infections to overall SARS-CoV-2 transmission means that
57 combination prevention measures, with enhanced hand hygiene, masks, testing tracing and isolation
58 strategies and social distancing, will continue to be needed.

59 AUTHOR SUMMARY

60 Why was this study done?

- 61 ▪ The proportion of people who will remain asymptomatic throughout the course of infection with
62 severe acute respiratory syndrome coronavirus 2 (SARS-CoV-2), the cause of coronavirus disease
63 2019 (covid-19), is not known.
- 64 ▪ Studies that assess people at just one time point will overestimate the proportion of true
65 asymptomatic infection because those who go on to develop covid-19 symptoms will be wrongly
66 classified as asymptomatic, rather than pre-symptomatic.
- 67 ▪ The amount, and infectiousness, of asymptomatic SARS-CoV-2 infection will determine what
68 kind of measures will prevent transmission most effectively.

69 What did the researchers do and find?

- 70 ▪ We did a living systematic review through 10 June 2020, using automated workflows that speed
71 up the review processes, and allow the review to be updated when relevant new evidence
72 becomes available.
- 73 ▪ Overall, in 79 studies in a range of different settings, 20% (95% confidence interval, CI 17–25%)
74 of people with SARS-CoV-2 infection remained asymptomatic during follow-up, but biases in
75 study designs limit the certainty of this estimate.
- 76 ▪ We found some evidence that SARS-CoV-2 infection in contacts of people with asymptomatic
77 infection is less likely than in contacts of people with symptomatic infection (relative risk 0.35,
78 95% CI 0.10-1.27).

79 What do these findings mean?

- 80 ▪ The findings of this living systematic review suggest that most SARS-CoV-2 infections are not
81 asymptomatic throughout the course of infection.
- 82 ▪ Future studies should be designed specifically to determine the true proportion of asymptomatic
83 SARS-CoV-2 infections, using methods to minimise biases in the selection of study participants
84 and ascertainment of symptom status during follow up.
- 85 ▪ The contribution of pre-symptomatic and asymptomatic infections to overall SARS-CoV-2
86 transmission means that combination prevention measures, with enhanced hand hygiene,
87 masks, testing tracing and isolation strategies and social distancing, will continue to be needed.

88 Introduction

89 There is ongoing discussion about the level of asymptomatic severe acute respiratory syndrome
90 coronavirus 2 (SARS-CoV-2) infection. The authors of a narrative review report a range of
91 proportions of participants positive for SARS-CoV-2 but asymptomatic in different studies from 6 to
92 96% [1]. The discrepancy results, in part, from the interpretation of studies that report a proportion
93 of asymptomatic people with SARS-CoV-2 detected at a single point. The studies cited include both
94 people who will remain asymptomatic throughout and those, known as pre-symptomatic, who will
95 develop symptoms of coronavirus disease 2019 (covid-19) if followed up [2]. The full spectrum and
96 distribution of covid-19, from completely asymptomatic, to mild and non-specific symptoms, viral
97 pneumonia, respiratory distress syndrome, and death are not yet known [3]. Without follow up,
98 however, the proportions of asymptomatic and pre-symptomatic infections cannot be determined.

99 Accurate estimates of the proportions of true asymptomatic and pre-symptomatic infections are
100 needed urgently because their contribution to overall SARS-CoV-2 transmission at the population
101 level will determine the appropriate balance of control measures [3]. If the predominant route of
102 transmission is from people who have symptoms, then strategies should focus on testing, followed
103 by isolation of infected individuals and quarantine of their contacts. If, however, most transmission
104 is from people without symptoms, social distancing measures that reduce contact with people who
105 might be infectious, should be prioritised, enhanced by active case-finding through testing of
106 asymptomatic people.

107 The objectives of this study were to address three questions: 1. Amongst people who become
108 infected with SARS-CoV-2, what proportion does not experience symptoms at all during their
109 infection? 2. Amongst people with SARS-CoV-2 infection who are asymptomatic when diagnosed,
110 what proportion will develop symptoms later? 3. What proportion of SARS-CoV-2 transmission is
111 accounted for by people who are either asymptomatic throughout infection, or pre-symptomatic?

112 Methods

113 We conducted a living systematic review, a systematic review that provides an online summary of
114 findings and is updated when relevant new evidence becomes available [4]. The review follows a
115 published protocol (<https://osf.io/9ewys/>), which describes in detail the methods used to speed up
116 review tasks [5] and to assess relevant evidence rapidly during a public health emergency [6]. The
117 first two versions of the review have been published as preprints [7,8]. We report our findings
118 according to the statement on preferred reporting items for systematic reviews and meta-analyses
119 (S1 PRISMA Checklist) [9]. Box 1 shows our definitions of symptoms, asymptomatic infection and
120 pre-symptomatic status. We use the term asymptomatic SARS-CoV-2 infection for people without
121 symptoms of covid-19 who remain asymptomatic throughout the course of infection. We use the
122 term pre-symptomatic for people who do not have symptoms of covid-19 when enrolled in a study,
123 but who develop symptoms during adequate follow-up.

124 **Box 1. Definitions of symptoms and symptom status in a person with SARS-CoV-2 infections**

Symptoms: symptoms that a person experiences and reports. We used the authors' definitions. We searched included manuscripts for an explicit statement that the study participant did not report symptoms that they experienced. Some authors defined 'asymptomatic' as an absence of self-reported symptoms. We did not include clinical signs observed or elicited on examination.

Asymptomatic infection: a person with laboratory-confirmed SARS-CoV-2 infection, who has no symptoms, according to the authors' report, at the time of first clinical assessment and had no symptoms at the end of follow-up. The end of follow-up was defined as any of the following: virological cure, with one or more negative RT-PCR test results; follow-up for 14 days or more after the last possible exposure to an index case; follow-up for seven days or more after the first RT-PCR positive result.

Pre-symptomatic: a person with laboratory-confirmed SARS-CoV-2 infection, who has no symptoms, according to the authors' report, at the time of first clinical assessment, but who developed symptoms by the end of follow-up. The end of follow-up was defined as any of the following: virological cure, with one or more negative RT-PCR test results; follow-up for 14 days or more after the last possible exposure to an index case; follow-up for seven days or more after the first RT-PCR positive result.

125

126 Information sources and search

127 We conducted the first search on March 25, 2020 and updated it on April 20 and June 10, 2020. We
128 searched the covid-19 living evidence database [10], which is generated using automated workflow
129 processes [5] to: i) provide daily updates of searches of four electronic databases: Medline Pubmed,
130 Ovid Embase, bioRxiv and medRxiv, using medical subject headings and free text keywords for SARS-
131 CoV-2 infection and covid-19; ii) de-duplicate the records; iii) tag records that are preprints; and iv)
132 allow searches of titles and abstracts using Boolean operators. We used the search function to
133 identify studies of asymptomatic or pre-symptomatic SARS-CoV-2 infection using a search string of
134 medical subject headings and free text keywords (supporting information, S1 Text). We also
135 examined articles suggested by experts and the reference lists of retrieved mathematical modelling
136 studies and systematic reviews. Reports from this living rapid systematic review will be updated at
137 three-monthly intervals, with continuously updated searches.

138 Eligibility criteria

139 We included studies in any language of people with SARS-CoV-2 diagnosed by reverse transcriptase
140 PCR (RT-PCR) that documented follow-up and symptom status at the beginning and end of follow-
141 up, or investigated the contribution to SARS-CoV-2 transmission of asymptomatic or pre-
142 symptomatic infection. We included contact tracing investigations, case series, cohort studies, case-
143 control studies and statistical and mathematical modelling studies. We excluded the following study
144 types: case reports of a single patient and case series where participants were not enrolled
145 consecutively. Where multiple records included data from the same study population, we linked the
146 records and extracted data from the most complete report.

147 Study selection and data extraction

148 Reviewers worked in pairs to screen records using an application programming interface in the
149 electronic data capture system (REDCap, Vanderbilt University, USA). One reviewer selected
150 potentially eligible studies and a second reviewer verified all included and excluded studies. We
151 reported the identification, exclusion and inclusion of studies in a flowchart (S1 Figure). The

152 reviewers determined which of the three review questions each study addressed, using the
153 definitions in Box 1. One reviewer extracted data using a pre-piloted extraction form in REDCap and
154 a second reviewer verified the extracted data using the query system. A third reviewer adjudicated
155 on disagreements that could not be resolved by discussion. We contacted study authors for
156 clarification where the study description was insufficient to reach a decision on inclusion or if
157 reported data in the manuscript were internally inconsistent. The extracted variables included, but
158 were not limited to, study design, country and/or region, study setting, population, age, primary
159 outcomes and length of follow-up. From empirical studies, we extracted raw numbers of individuals
160 with any outcome and its relevant denominator. From statistical and mathematical modelling
161 studies we extracted proportions and uncertainty intervals reported by the authors.

162 The primary outcomes for each review question were: 1. Proportion with asymptomatic SARS-CoV-2
163 infection who did not experience symptoms at all during follow-up; 2. Proportion with SARS-CoV-2
164 infections who did not have symptoms at the time of testing but developed symptoms during follow-
165 up. 3. Estimated proportion (with uncertainty interval) of SARS-CoV-2 transmission accounted for by
166 people who are asymptomatic or pre-symptomatic. A secondary outcome for review question 3 was
167 the secondary attack rate from asymptomatic or pre-symptomatic index cases.

168 [Risk of bias in included studies](#)

169 Two authors independently assessed the risk of bias. A third reviewer resolved disagreements. For
170 observational epidemiological studies, we adapted the Joanna Briggs Institute Critical Appraisal
171 Checklist for Case Series [11]. The adapted tool included items about inclusion criteria, measurement
172 of asymptomatic status, follow-up of course of disease, and statistical analysis. We added items
173 about selection biases affecting the study population from a tool for the assessment of risk of bias in
174 prevalence studies [12]. For mathematical modelling studies, we used a checklist for assessing
175 relevance and credibility [13].

176 Synthesis of the evidence

177 We used the *metaprop* and *metabin* functions from the *meta* package (version 4.11-0) [14] in R
178 (version 3.5.1) to display the study findings in forest plots and synthesise their findings. The 95%
179 confidence intervals (CI) for each study are estimated using the Clopper-Pearson method [15]. We
180 examined heterogeneity visually in forest plots. We stratified studies according to the methods used
181 to identify people with asymptomatic SARS-CoV-2 infection and the study setting. To synthesise
182 proportions from comparable studies, in terms of design and population, we used stratified random
183 effects meta-analysis. For the stratified and overall summary estimates we calculated prediction
184 intervals, to represent the likely range of proportions that would be obtained in subsequent studies
185 conducted in similar settings [16]. We calculated the secondary attack rate as the number of cases
186 among contacts as a proportion of all close contacts ascertained. We did not account for potential
187 clustering of contacts because the included studies did not report the size of clusters. We compared
188 the secondary attack rate from asymptomatic or pre-symptomatic index cases with that from
189 symptomatic cases. If there were no events in a group, we added 0.5 to each cell in the 2x2 table.
190 We used random effects meta-analysis with the Mantel-Haenszel method to estimate a summary
191 risk ratio (with 95% CI).

192 Results

193 The living evidence database contained a total of 25538 records about SARS-CoV-2 or COVID-19 by
194 10 June, 2020. The searches for studies about asymptomatic or pre-symptomatic SARS-CoV-2, on 25
195 March, 20 April and 10 June, resulted in 89, 230 and 688 records for screening (S1 Figure). In the first
196 version of the review [7], 11 articles were eligible for inclusion [17-27], version 2 [8] identified
197 another 26 eligible records [28-53], and version 3 identified another 61 eligible records [54-114].
198 After excluding four articles for which more recent data became available in a subsequent version
199 [25,29,30,35], the total number of articles included was 94 (S1 Table) [17-24,26-28,31-34,36-114].
200 The types of evidence changed across the three versions of the review (S1 Table). In the first version,
201 six of 11 studies were contact investigations of single family clusters with a total of 39 people. In the

202 next versions, study designs included larger investigations of contacts and outbreaks, screening of
203 defined groups and studies of hospitalised adults and children. Across all three review versions, data
204 from 79 empirical observational studies were collected in 19 countries or territories (Tables 1 and 2)
205 and included 6832 people with SARS-CoV-2 infection. Forty seven of the studies, including 3802
206 infected people were done in China (S2 Table). At the time of their inclusion in the review, 23 of the
207 included records were preprints; six of these had been published in peer-reviewed journals by 17
208 July 2020 [19,20,27,81,82,106].

209 [Proportion of people with asymptomatic SARS-CoV-2 infection](#)

210 We included 79 studies that reported empirical data about 6616 people with SARS-CoV-2 infection
211 (1287 defined as having asymptomatic infection) [17,18,21-23,26-28,31,32,34,36,39-45,47-50,52-
212 54,56-62,64,66-68,70-77,79-90,92-112,114] and one statistical modelling study [24] (Table 1). The
213 sex distribution of the people with asymptomatic infection was reported in 41/79 studies and the
214 median age was reported in 35/79 studies (Table 1). The results of the studies were heterogeneous
215 (S2 Figure). We defined seven strata, according to the method of selection of asymptomatic status
216 and study settings. Study findings within some of these strata were more consistent (Figure 1). We
217 considered the statistical modelling study of passengers on the Diamond Princess cruise ship
218 passengers [24] separately, because of the different method of analysis and overlap with the study
219 population reported by Tabata S, et al. [27].

220 The main risks of bias across all categories of empirical studies were in the selection and enrolment
221 of people with asymptomatic infection and mismeasurement of asymptomatic status because of
222 absent or incomplete definitions (S3 Figure). Sources of bias specific to studies in particular settings
223 are discussed with the relevant results.

224 The overall estimate of the proportion of people who become infected with SARS-CoV-2 and remain
225 asymptomatic throughout the course of infection was 20% (95% CI 17–25%, 79 studies), with a

226 prediction interval of 3 to 67% (Figure 1). One statistical modelling study was based on data from all
 227 634 passengers from the Diamond Princess Cruise ship with RT-PCR positive test results [24]. The
 228 authors adjusted for the proportion of people who would develop symptoms (right censoring) in a
 229 Bayesian framework to estimate that, if all were followed up until the end of the incubation period,
 230 the probability of asymptomatic infections would be 17.9% (95% credibility interval, CrI 15.5–20.2%).

231 Table 1. Characteristics of studies reporting on proportion of asymptomatic SARS-CoV-2 infections

Author	Country, location	Total SARS-CoV-2, n	Asymptomatic SARS-CoV-2, n	Sex of asymptomatic people	Age of asymptomatics, years, median	Follow-up method ^a
Contact investigation, single						
Tong, ZD [44]	China, Zhejiang	5	3	2F, 3M	28 IQR 12-41	1, 3
Huang, R [74]	China, Suqian	2	1	1F, 0M	54	3
Jiang, XL [76]	China, Shandong	8	3	3F, 0M	35 IQR 0-53	3
Jiang, X [75]	China, Chongqing	3	1	1F, 0M	8	2
Liao, J [22]	China, Chongqing	12	3	NR	NR	1,2
Hu, Z [21]	China, Nanjing	4	1	0F, 1M	64	2, 3
Luo, SH [23]	China, Anhui	4	1	1F, 0M	50	1,2,3
Chan, JF [18]	China, Guangdong	5	1	0F, 1M	10	1
Ye, F [49]	China, Sichuan	5	1	0F, 1M	28	1,2
Bai, Y [17]	China, Anyang	6	1	1F, 0M	20	1
Luo, Y [85]	China, Wuhan	6	5	NR	37 IQR 7-62	1
Zhang, J [50]	China, Wuhan & Beijing	5	2	1F, 1M	NR	2
Zhang, B [110]	China, Guangdong	7	2	0F, 2M	13.5 IQR 13-14	3
Huang, L [73]	China, Gansu	7	2	2F, 0M	44 IQR 38.5-49.5	2
Qian, G [26]	China, Zhejiang	8	2	1F, 1M	30.5 IQR 1, 60	1,2
Gao, Y [70]	China, Wuxi	15	6	3F, 3M	50 IQR 48-51	1,2
Contact investigation, aggregated						
Hijnen, D [72]	Germany	11	1	0F, 1M	49	1
Brandstetter, S [62]	Germany	36	2	NR	NR	2
Zhang, W2 [111]	China, Guiyang	12	4	NR	NR	1, 2, 3
Cheng, HY [66]	Taiwan	22	4	NR	NR	1
Wang, Z [47]	China, Wuhan	47	4	NR	NR	1
Wu, J [105]	China, Zhuhai	83	8	NR	NR	1,2

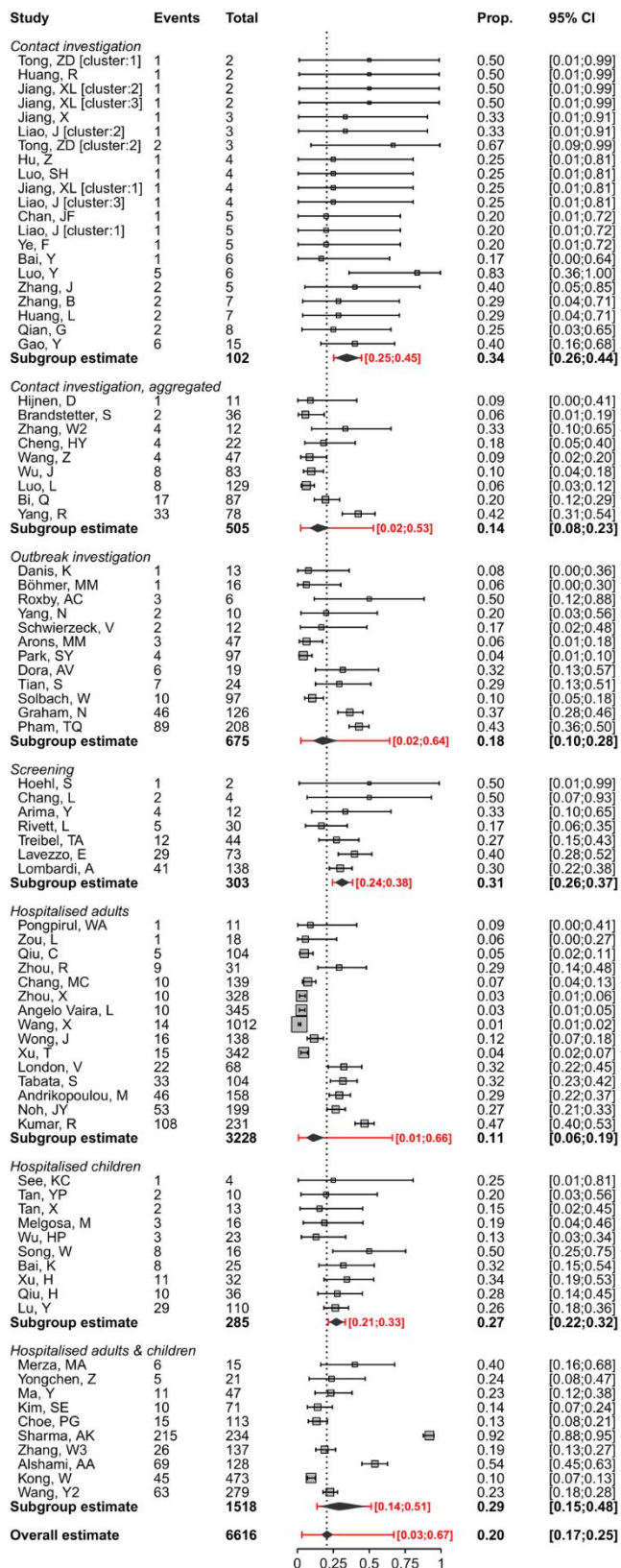
Luo, L [36]	China, Guangzhou	129	8	NR	NR	1, 2, 3
Bi, Q [60]	China, Shenzhen	87	17	NR	NR	2,3
Yang, R [108]	China, Wuhan	78	33	22F, 11M	37 IQR 26-45	3
Outbreak investigation						
Danis, K [32]	France	13	1	NR	NR	1, 2
Böhmer, MM [61]	Germany	16	1	NR	NR	1
Roxby, AC [94]	USA	6	3	NR	NR	1
Yang, N [48]	China, Xiaoshan	10	2	1F, 1M	NR	1, 2
Schwierzeck, V [95]	Germany	12	2	NR	NR	2
Arons, MM [58]	USA	47	3	NR	NR	2
Park, SY [90]	South Korea	97	4	NR	NR	2
Dora, AV [68]	USA	19	6	0F, 6M	75 IQR 72-75	3
Tian, S [43]	China, Shandong	24	7	NR	NR	3
Solbach, W [97]	Germany	97	10	NR	NR	2
Graham, N [71]	United Kingdom	126	46	NR	NR	2
Pham, TQ [100]	Vietnam	208	89	NR	31 IQR 23-45	2
Screening of defined population						
Hoehl, S [34]	Germany	2	1	0F, 1M	58	2
Chang, L [31]	China, Wuhan	4	2	0F, 2M	45 IQR 37-53	2
Arima, Y [28]	Japan	12	4	NR	NR	1, 2
Rivett, L [93]	United Kingdom	30	5	NR	NR	2
Treibel, TA [101]	United Kingdom	44	12	NR	NR	2
Lavezzo, E [81]	Italy	73	29	NR	NR	2
Lombardi, A [82]	Italy	138	41	NR	NR	3
Hospitalised adults						
Pongpirul, WA [39]	Thailand	11	1	1F, 0M	66	2, 3
Zou, L [53]	China, Zhuhai	18	1	1M, 0M	26	1
Qiu, C [92]	China, Hunan	104	5	NR	NR	2
Zhou, R [114]	China, Guangdong	31	9	NR	NR	3
Chang, MC [64]	South Korea	139	10	4F, 6M	NR	1, 2
Zhou, X [52]	China, Shanghai	328	10	NR	NR	1, 2, 3
Angelo Vaira, L [57]	Italy	345	10	NR	NR	3
Wang, X [45]	China, Wuhan	1012	14	NR	NR	1, 2
Wong, J [103]	Brunei	138	16	NR	NR	2,3
Xu, T [107]	China, Jiangsu	342	15	5F, 10M	27 IQR 17-36	2, 3
London, V [83]	USA	68	22	22F, 0M	30.5	2

Tabata, S [27]	Japan ^b	104	33	18F, 15M	IQR 24.5-34.8 70 IQR 57-75	2
Andrikopoulou, M [56]	USA	158	46	46F, 0M	NR	1, 2
Noh, JY [89]	South Korea	199	53	NR	NR	3
Kumar, R [80]	India, New Delhi	231	108	18F, 90M	NR	2, 3
Hospitalised children						
See, KC [41]	Malaysia	4	1	0F, 1M	9	1, 2, 3
Tan, YP [42]	China, Changsha	10	2	1F, 1M	8	2, 3
Tan, X [99]	China, Changsha	13	2	2F, 0M	5 IQR 2-8	1,2, 3
Melgosa, M [87]	Spain	16	3	NR	NR	1,2
Wu, HP [104]	China, Jiangxi	23	3	NR	NR	3
Song, W [98]	China, Hubei	16	8	3F, 5M	11 IQR 7-12	1, 2
Bai, K [59]	China, Chongqing	25	8	NR	NR	3
Xu, H [106]	China, Guizhou	32	11	4F, 7M	NR	1, 2
Qiu, H [40]	China, Zhejiang	36	10	NR	NR	1, 2, 3
Lu, Y [84]	China, Wuhan	110	29	12 F, 17M	7 IQR 6-11	2, 3
Hospitalised adults and children						
Merza, MA [88]	Iraqi Kurdistan	15	6	NR	NR	2, 3
Yongchen, Z [109]	China, Jiangsu	21	5	2F, 3M	25 IQR 14-54	1, 2, 3
Ma, Y [86]	China, Shandong	47	11	5F, 6M	23 IQR NR	2
Kim, SE [77]	South Korea	71	10	6F, 4M	31 IQR 21-55	2
Choe, PG [67]	South Korea	113	15	17F, 8 M	NR	3
Sharma, AK [96]	India, Jaipur	234	215	NR	NR	1, 2, 3
Zhang, W3 [112]	China, Guiyang	137	26	12F, 14M	24 IQR 12-36	1, 2
Alshami, AA [54]	Saudi Arabia	128	69	36, 33M	NR	2,3
Kong, W [79]	China, Sichuan	473	45	NR	NR	1, 2
Wang, Y2 [102]	China, Chongqing	279	63	29F, 34M	39 IQR 27-53	3

232
233
234
235
236
237

Abbreviations: F, female; IQR, interquartile range; M, male; NR, not reported; USA, United States of America
a. Follow-up according to protocol (1, 14 days after last possible exposure; 2, seven days after diagnosis; 3, until negative RT-PCR result);
b. People of different nationalities taken from Diamond Princess cruise ship to a hospital in Japan.

238



239

240 Figure 1. Forest plot of proportion of people with asymptomatic SARS-CoV-2 infection, stratified by setting.
 241 The x-axis displays proportions. In the setting 'Contact investigations' where more than one cluster was
 242 reported, clusters are annotated with '[cluster]'. The diamond shows the summary estimate and its 95%
 243 confidence interval. The red bar and red text show the prediction interval.

244 The summary estimates of the proportion of people with asymptomatic SARS-CoV-2 infection
245 differed according to study setting, although prediction intervals for all groups overlapped. The first
246 three strata in Figure 1 involve studies that reported on different types of contact investigation,
247 which start with an identified covid-19 case. The studies reporting on single family clusters (21
248 estimates from 16 studies in China, n=102 people with SARS-CoV-2) all included at least one
249 asymptomatic person [17,18,21-23,26,44,49,50,70,73-76,85,110]. The summary estimate was 34%
250 (95% CI 26–44%, prediction interval 25–45%). In nine studies that reported on close contacts of
251 infected individuals and aggregated data from clusters of both asymptomatic and symptomatic
252 people with SARS-CoV-2 the summary estimate was 14% (95% CI 8–23%, prediction interval 2–53%)
253 [36,47,60,62,66,72,105,108,111]. We included 12 studies (n=675 people) that reported on outbreak
254 investigations arising from a single symptomatic person, or from the country’s first imported cases of
255 people with covid-19 [32,43,48,58,61,68,71,90,94,95,97,100]. Four of the outbreaks involved nursing
256 homes [58,68,71,94] and four involved occupational settings [43,61,90,95]. The summary estimate
257 of the proportion of asymptomatic SARS-CoV-2 infections was 18% (95% CI 10–28%, prediction
258 interval 10–28%).

259 In seven studies, people with SARS-CoV-2 infection were detected through screening of all people in
260 defined populations who were potentially exposed (303 infected people amongst 10090 screened)
261 [28,31,34,81,82,93,101]. The screened populations included healthcare workers [82,93,101], people
262 evacuated from a setting where SARS-CoV-2 transmission was confirmed, irrespective of symptom
263 status [28,34], the whole population of one village in Italy [81] and blood donors [31]. In these
264 studies, the summary estimate of the proportion asymptomatic was 31% (95% CI 26–37%, prediction
265 interval 24–38%). There is a risk of selection bias in studies of certain groups, such as healthcare
266 workers and blood donors, because people with symptoms are excluded [31,82,93,101] or from non-
267 responders in population-based screening [81]. Retrospective symptom ascertainment could also
268 increase the proportion determined asymptomatic [81,82,101].

269 The remaining studies, in hospital settings, included adult patients only (15 studies, n=3228)
270 [27,39,45,52,53,56,57,64,80,83,89,92,103,107,114], children only (10 studies, n=285) [40-
271 42,59,84,87,98,99,104,106] or adults and children (10 studies, n=1518)
272 [54,67,77,79,86,88,96,102,109,112] (Table 1, Figure 1). The types of hospital and clinical severity of
273 patients differed, including settings in which anyone with SARS-CoV-2 infection was admitted for
274 isolation and traditional hospitals.

275 Proportion of pre-symptomatic SARS-CoV-2 infections

276 We included 31 studies in which the people with no symptoms of covid-19 at enrolment were
277 followed up and the proportion that develops symptoms is defined as pre-symptomatic (Table 2,
278 Figure 2)
279 [21,27,28,31,34,37,38,41,45,46,49,52,55,56,58,67,68,71,73,76,77,79,81,90,93,95,103,110,111,113,1
280 14]. Four studies addressed only this review question [37,38,55,113]. The findings from the 31
281 studies were heterogeneous (S4 Figure), even when categorised according to the method of
282 selection of asymptomatic participants, and we did not estimate a summary measure (Figure 2).

283

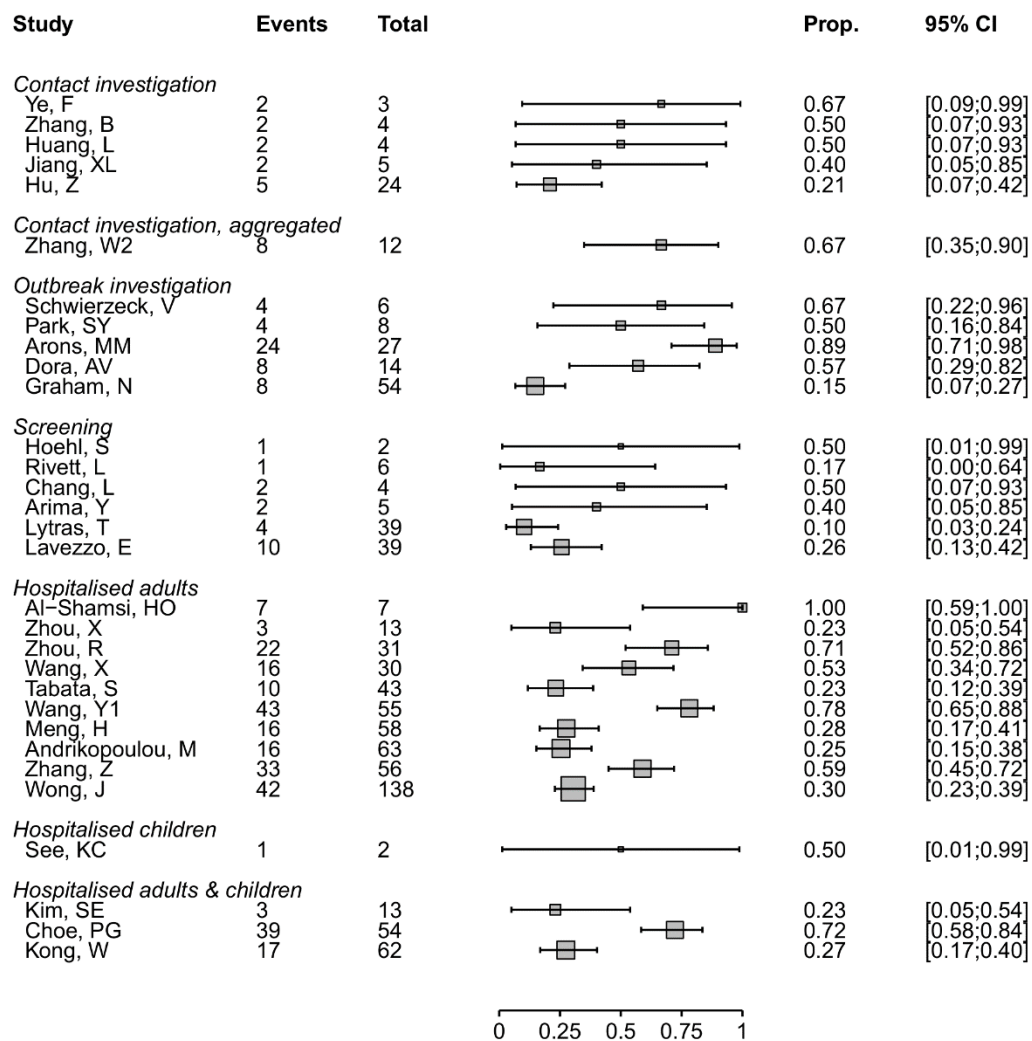
284

285 Table 2. Characteristics of studies that measured the proportion of people with SARS-CoV-2 infection
286 that develops symptoms

Author	Country, location	Total asymptomatic SARS-CoV-2, n	Develops symptoms after testing, n	Sex, asymptomatics at time of testing	Age of asymptomatics at time of testing, years, median	Follow-up method ^a
Contact investigation, single						
Ye, F [49]	China, Sichuan	3	2	0F, 3M	28 IQR 23-50	1, 2
Zhang, B [110]	China, Guangdong	4	2	0F, 4M	34 IQR 33-35	3
Huang, L [73]	China, Gansu	4	2	3F, 1M	44.5 IQR 34.50-54.25	2
Jiang, XL [76]	China, Shandong	5	2	3F, 2M	35 IQR 35-37	3
Hu, Z [21]	China, Nanjing	24	5	NR	NR	2, 3
Contact investigation, aggregated						
Zhang, W2 [111]	China, Guangzhou	12	8	NR	NR	1,2,3
Outbreak investigation						
Schwierzeck, V [95]	Germany	6	4	NR	NR	2
Park, SY [90]	South Korea	8	4	NR	NR	2
Arons, MM [58]	USA	27	24	NR	NR	2
Dora, AV [68]	USA	14	8	0F, 14M	NR	3
Graham, N [71]	United Kingdom	54	8	NR	NR	1
Screening of defined population						
Hoehl, S [34]	Germany	2	1	1F, 1M	51	2
Rivett, L [93]	United Kingdom	6	1	NR	NR	2
Chang, L [31]	China, Wuhan	4	2	1F, 3M	39.5 IQR 29-47.5	2
Arima, Y [28]	Japan	5	2	NR	NR	1, 2
Lytras, T [37]	Greece	39	4	NR	NR	2

Lavezzo, E [81]	Italy	39	10	NR	NR	2
Hospitalised adults						
Al-Shamsi, HO [55]	United Arab Emirates	7	7	5F, 2M	51.6 IQR 40-76	3
Luo, SH [23]	China, Anhui	8	7	NR	NR	1, 2, 3
Zhou, X [52]	China, Shanghai	13	3	7F, 6M	NR	2, 3
Zhou, R [114]	China, Guangdong	31	22	NR	NR	3
Wang, X [45]	China, Wuhan	30	16	NR	NR	1, 2
Tabata, S [27]	Cruise Ship	43	10	24F, 19M	69 IQR 60.5-75	2
Wang, Y1 [46]	China, Shenzhen	55	43	NR	49 IQR 2-69	3
Meng, H [38]	China, Wuhan	58	16	NR	NR	2
Andrikopoulou, M [56]	USA	63	16	63F, 0M	NR	1, 2
Zhang, Z [113]	China, Shenzhen	56	33	33F, 23M	NR	2,3
Wong, J [103]	Brunei	138	42	NR	NR	2, 3
Hospitalised children						
See, KC [41]	Malaysia	2	1	0F, 2M	5 IQR 1-9	1, 2, 3
Hospitalised adults and children						
Kim, SE [77]	South Korea	13	3	7F, 6M	31 IQR 20.5-51.5	2
Choe, PG [67]	South Korea	54	39	32F, 22M	NR	3
Kong, W [79]	China, Sichuan	62	17	NR	NR	1

287 Abbreviations: F, female; IQR, interquartile range; M, male; NR, not reported; USA, United States
288 of America
289 a. Follow-up according to protocol (1, 14 days after possible exposure; 2, seven days after diagnosis; 3, until
290 one or more negative RT-PCR result);
291 b. People of different nationalities taken from Diamond Princess cruise ship to a hospital in Japan
292 c. Until hospital discharge or negative RT-PCR.
293
294



295

296 Figure 2. Forest plot of proportion of people with pre-symptomatic SARS-CoV-2 infection, stratified by setting.
 297 The x-axis displays proportions.

298

299

300 Additional analyses

301 We investigated heterogeneity in the estimates of the proportion of asymptomatic SARS-CoV-2

302 infections in subgroup analyses that were not specified in the original protocol. In studies of

303 hospitalised children, the point estimate was higher (25%, 95% CI 14–40%, 10 studies) than in adults

304 (11%, 95% CI 7–17%, 15 studies), but confidence intervals overlapped (Figure 1). The proportion of

305 asymptomatic SARS-CoV-2 infection estimated in studies of hospitalised patients (35 studies, 19%,

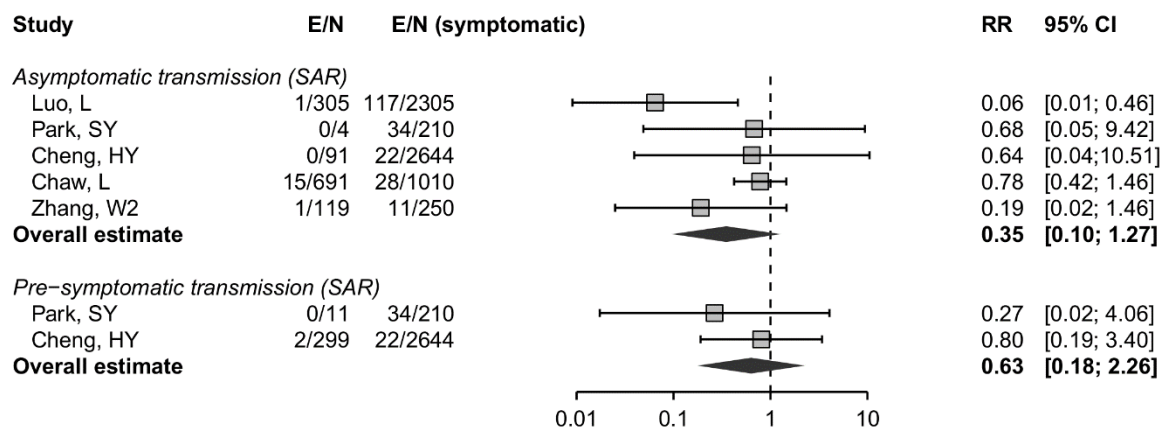
306 95% CI 14–25%) was similar to that in all other settings (44 studies, 22%, 95% CI 17–29%, S5 Figure).

307 To examine publication status, we conducted a sensitivity analysis, omitting studies that were

308 identified as preprints at the time of data extraction (S6 Figure). The estimate of the proportion of
 309 asymptomatic infection in all settings (18%, 95% CI 14–22%) and setting-specific estimates were very
 310 similar to the main analysis.

311 **Contribution of asymptomatic and pre-symptomatic infection to SARS-CoV-2 to transmission**
 312 Five of the studies that conducted detailed contact investigations provided enough data to calculate
 313 a secondary attack rate according to the symptom status of the index cases (Figure 3)

314 [36,65,66,90,111]. The summary risk ratio for asymptomatic compared with symptomatic was 0.35
 315 (95% CI 0.1–1.27) and for pre-symptomatic compared with symptomatic people was 0.63 (95% CI
 316 0.18–2.26) [66,90]. The risk of bias in ascertainment of contacts was judged to be low in all studies.



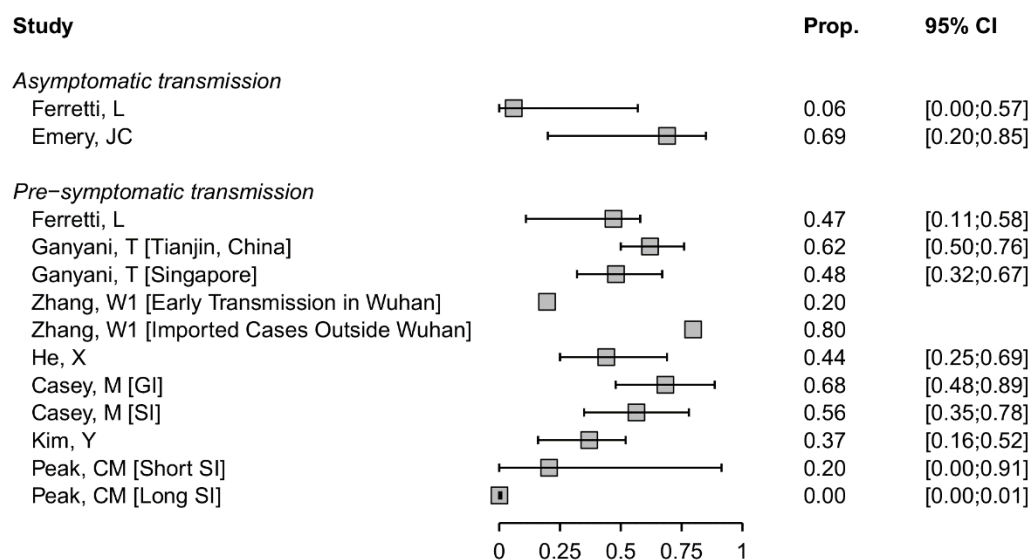
317
 318 Figure 3. Forest plot of the risk ratio (RR) and 95% confidence interval (CI) of the secondary attack rate (SAR),
 319 comparing infections in contacts of asymptomatic and pre-symptomatic index cases with infections in contacts
 320 of symptomatic cases. E, number of secondary transmission events; N, number of close contacts. The x-axis
 321 shows the risk ratio on a logarithmic scale.
 322

323 We included eight mathematical modelling studies (Figure 4) [19,20,33,51,63,69,78,91]. The models
 324 in five studies were informed by analysis of data from contact investigations in China, South Korea,
 325 Singapore, and the Diamond Princess cruise ship, using data to estimate the serial interval or
 326 generation time [19,20,33,69,78] and in three studies the authors used previously published
 327 estimates [51,63,91].

328 Estimates of the contributions of both asymptomatic and pre-symptomatic infections SARS-CoV-2
 329 transmission were very heterogeneous. In two studies, the contribution to SARS-CoV-2 transmission

330 of asymptomatic infection were estimated to be 6% (95% CrI 0–57%) [19] and 69% (95% CrI 20–85%)
 331 [69] (Figure 4). The estimates have large uncertainty intervals and the disparate predictions result
 332 from differences in the proportion of asymptomatic infections and relative infectiousness of
 333 asymptomatic infection. Ferretti L, et al. provide an interactive web application [ref:[link](#)], which
 334 shows how these parameters affect the model results.

335 Models of the contribution of pre-symptomatic transmission used different assumptions about the
 336 durations and distributions of infection parameters such as incubation period, generation time and
 337 serial interval [19,20,33,51,63,78,91]. In models that accounted for uncertainty appropriately, most
 338 estimates of the proportion of transmission resulting from people with SARS-CoV-2 who are pre-
 339 symptomatic ranged from 20 to 70%. In one study that estimated a contribution of <1% [91], the
 340 model fitted serial interval was longer than observed in empirical studies [115]. The credibility of
 341 most modelling studies was limited by the absence of external validation. The data to which the
 342 models were fitted were generally from small samples (S7 Figure).



343

344 Figure 4. Forest plot of proportion of SARS-CoV-2 infection resulting from asymptomatic or pre-symptomatic
 345 transmission. For studies that report outcomes in multiple settings, these are annotated in brackets. SI, serial
 346 interval; GI: generation interval.
 347

348 Discussion

349 Summary of main findings

350 The summary proportion of SARS-CoV-2 that is asymptomatic throughout the course of infection
351 was estimated to be 20% (95% CI 17–25%, 79 studies), with a prediction interval of 3–67%. In studies
352 that identified SARS-CoV-2 infection through screening of defined populations, the proportion of
353 asymptomatic infections was 31% (95% CI 26–37%, 7 studies). In 31 studies reporting on people who
354 are pre-symptomatic but who go on to develop symptoms, the results were too heterogeneous to
355 combine. The secondary attack rate from asymptomatic infections may be lower than that from
356 symptomatic infections (relative risk 0.35, 95% CI 0.1–1.27). Modelling studies estimated a wide
357 range of the proportion of all SARS-CoV-2 infections that result from transmission from
358 asymptomatic and pre-symptomatic individuals.

359 Strengths and weaknesses

360 A strength of this review is that we used clear definitions and separated review questions to
361 distinguish between SARS-CoV-2 infections that remain asymptomatic throughout their course from
362 those that become symptomatic, and to separate proportions of people with infection from their
363 contribution to transmission in a population. This living systematic review uses methods to minimise
364 bias whilst increasing the speed of the review process [5,6], and will be updated regularly. We only
365 included studies that provided information about follow-up through the course of infection, which
366 allowed reliable assessment about the proportion of asymptomatic people in different settings. In
367 the statistical synthesis of proportions, we used a method that accounts for the binary nature of the
368 data and avoids the normality approximation (weighted logistic regression).

369 Limitation of the review are that most included studies were not designed to estimate the
370 proportion of asymptomatic SARS-CoV-2 infection and definitions of asymptomatic status were
371 often incomplete or absent. The risks of bias, particularly those affecting selection of participants,
372 differed between studies and could result in both underestimation and overestimation of the true
373 proportion of asymptomatic infections. Also, we did not consider the possible impact of false
374 negative RT-PCR results, which might be more likely to occur in asymptomatic infections [116] and

375 would underestimate the proportion of asymptomatic infections [117]. The four databases that we
376 searched are not comprehensive, but they cover the majority of publications and we do not believe
377 that we have missed studies that would change our conclusions.

378 [Comparison with other reviews](#)

379 We found narrative reviews that reported wide ranges (five to 96%) of infections that might be
380 asymptomatic [1,118]. These reviews presented cross-sectional studies alongside longitudinal
381 studies and did not distinguish between asymptomatic and pre-symptomatic infection. We found
382 three systematic reviews, which reported similar summary estimates from meta-analysis of studies
383 published up to May [119-121]. In two reviews, authors applied inclusion criteria to reduce the risks
384 of selection bias, with summary estimates of 11% (95% CI 4–18%, 6 studies) [120] and 15% (95% CI
385 12–18%, 9 studies) [121]. Our review includes all these studies, mostly in the categories of
386 aggregated contact or outbreak investigations, with compatible summary estimates (Figure 1). We
387 categorised one report [81] with other studies in which a defined population was screened. The
388 summary estimate in the third systematic review (16%, 95% CI 10–23%, 41 studies) [119] was
389 similar to that of other systematic reviews, despite inclusion of studies with no information about
390 follow-up. In comparison with other reviews, rather than restricting inclusion, we give a
391 comprehensive overview of studies with adequate follow-up, with assessment of risks of bias and
392 exploration of heterogeneity (S2-S7 Figures). The three versions of this review to date have shown
393 how types of evidence change over time, from single family investigations to large screening studies
394 (S1 Table).

395 [Interpretation](#)

396 The findings from systematic reviews, including ours [119-121], do not support the claim that a large
397 majority of SARS-CoV-2 infections are asymptomatic [122]. We estimated that, across all study
398 settings, the proportion of SARS-CoV-2 infections that is asymptomatic throughout the course of
399 infection is 20% (95% CI 17–25%). The wider prediction interval reflects the heterogeneity between
400 studies and indicates that future studies with similar study designs and in similar settings will

401 estimate a proportion of asymptomatic infections from three to 67%. Studies that detect SARS-CoV-
402 2 through screening of defined populations irrespective of infection status at enrolment should be
403 less affected by selection biases. In this group of studies, the estimated proportion of asymptomatic
404 infection was 31% (95% CI 26–37%, prediction interval 24–38%). This estimate suggests that other
405 studies might have had an over-representation of participants diagnosed because of symptoms, but
406 there were also potential selection biases in screening studies that might have overestimated the
407 proportion of asymptomatic infections. Our knowledge to date is based on data collected during the
408 acute phase of an international public health emergency, mostly for other purposes. To estimate the
409 true proportion of asymptomatic SARS-CoV-2 infections, researchers need to design prospective
410 longitudinal studies with clear definitions, methods that minimise selection and measurement
411 biases, and transparent reporting. Serological tests, in combination with virological diagnostic
412 methods, might improve ascertainment of SARS-CoV-2 infection in asymptomatic populations.
413 Prospective documentation of symptom status would be required, and improvements in the
414 performance of serological tests are still needed [123].

415 Our review adds to information about the relative contributions of asymptomatic and pre-
416 symptomatic infection to overall SARS-CoV-2 transmission. Since all people infected with SARS-CoV-2
417 are initially asymptomatic, the proportion that will go on to develop symptoms can be derived by
418 subtraction from the estimated proportion with true asymptomatic infections; from our review, we
419 would estimate this fraction to be 80% (95% CI 75–83%). Since SARS-CoV-2 can be transmitted a few
420 days before the onset of symptoms [124], pre-symptomatic transmission likely contributes
421 substantially to overall SARS-CoV-2 epidemics. The analysis of secondary attack rates provides some
422 evidence of lower infectiousness of people with asymptomatic than symptomatic infection (Figure 3)
423 [36,65,66,90,111], but more studies are needed to quantify this association more precisely. If both
424 the proportion and transmissibility of asymptomatic infection are relatively low, people with
425 asymptomatic SARS-CoV-2 infection should account for a smaller proportion of overall transmission
426 than pre-symptomatic individuals. This is consistent with the findings of the only mathematical

427 modelling study in our review that explored this question [19]. Uncertainties in estimates of the true
428 proportion and the relative infectiousness of asymptomatic SARS-Cov-2 infection and other infection
429 parameters contributed to heterogeneous predictions about the proportion of pre-symptomatic
430 transmission [20,33,51,63,78,91].

431 [Implications and unanswered questions](#)

432 Integration of evidence from epidemiological, clinical and laboratory studies will help to clarify the
433 relative infectiousness of asymptomatic SARS-CoV-2. Studies using viral culture as well as RNA
434 detection are needed since RT-PCR defined viral loads appear to be broadly similar in asymptomatic
435 and symptomatic people [116,125]. Age might play a role as children appear more likely than adults
436 to have an asymptomatic course of infection (Figure 1) [126]; age was poorly reported in studies
437 included in this review (Table 1).

438 SARS-CoV-2 transmission from people who are either asymptomatic or pre-symptomatic has
439 implications for prevention. Social distancing measures will need to be sustained at some level
440 because droplet transmission from close contact with people with asymptomatic and pre-
441 symptomatic infection occurs. Easing of restrictions will, however, only be possible with wide access
442 to testing, contact tracing and rapid isolation of infected individuals. Quarantine of close contacts is
443 also essential to prevent onward transmission during asymptomatic or pre-symptomatic periods of
444 those that have become infected. Digital, proximity tracing could supplement classical contact
445 tracing to speed up detection of contacts to interrupt transmission during the pre-symptomatic
446 phase if shown to be effective [19,127]. The findings of this systematic review of publications early in
447 the pandemic suggests that most SARS-CoV-2 infections are not asymptomatic throughout the
448 course of infection. The contribution of pre-symptomatic and asymptomatic infections to overall
449 SARS-CoV-2 transmission means that combination prevention measures, with enhanced hand and
450 respiratory hygiene, testing tracing and isolation strategies and social distancing, will continue to be
451 needed.

452 [Supporting Information](#)

453 S1 PRISMA Checklist

454 S1 Text. Search strings

455 S1 Figure. Flow chart

456 S2 Figure. Review question 1, forest plot of included studies, by study precision

457 S3 Figure. Risk of bias in studies included in review question 1 and review question 2

458 S4 Figure: Review question 2, forest plot of included studies, by study precision

459 S5 Figure: Sub-group analysis, review question 1, comparing studies of hospitalised patients with all
460 other settings

461 S6 Figure: Sensitivity analysis, review question 1, omitting studies that were preprints at the time of
462 literature search

463 S7 Figure. Assessment of credibility of mathematical modelling studies

464 S1 Table. Types of study included in successive versions of the living systematic review, as of 10 June
465 2020

466 S2. Table. Location of studies contributing data to review questions 1 and 2

467

468 References

- 469 1. Oran DP, Topol EJ. Prevalence of Asymptomatic Sars-Cov-2 Infection: A Narrative Review.
470 Ann Intern Med. 2020. Epub 2020/06/04. doi: 10.7326/M20-3012. PubMed PMID: 32491919.
- 471 2. World Health Organization. Coronavirus Disease 2019 (Covid-19) Situation Report - 73.
472 Geneva: 2020.
- 473 3. Lipsitch M, Swerdlow DL, Finelli L. Defining the Epidemiology of Covid-19 - Studies Needed.
474 N Engl J Med. 2020. Epub 2020/02/20. doi: 10.1056/NEJMp2002125. PubMed PMID: 32074416.
- 475 4. Elliott JH, Turner T, Clavisi O, Thomas J, Higgins JP, Mavergames C, Gruen RL. Living
476 Systematic Reviews: An Emerging Opportunity to Narrow the Evidence-Practice Gap. PLoS Med.
477 2014;11(2):e1001603. doi: 10.1371/journal.pmed.1001603. PubMed PMID: 24558353; PubMed
478 Central PMCID: PMC3928029.
- 479 5. Thomas J, Noel-Storr A, Marshall I, Wallace B, McDonald S, Mavergames C, Glasziou P,
480 Shemilt I, Synnot A, Turner T, Elliott J, Living Systematic Review N. Living Systematic Reviews: 2.
481 Combining Human and Machine Effort. J Clin Epidemiol. 2017;91:31-7. Epub 2017/09/16. doi:
482 10.1016/j.jclinepi.2017.08.011. PubMed PMID: 28912003.
- 483 6. Rapid Reviews to Strengthen Health Policy and Systems: A Practical Guide. Geneva: World
484 Health Organization; 2017. Available from:
485 <https://apps.who.int/iris/bitstream/handle/10665/258698/9789241512763-eng.pdf;sequence=1>.
- 486 7. Buitrago-Garcia D, Egli-Gany D, Counotte M, Hossmann S, Imeri H, Salanti G, Low N. The Role
487 of Asymptomatic Sars-Cov-2 Infections: Rapid Living Systematic Review and Meta-Analysis. Version
488 1. medRxiv. [Preprint]. 2020. doi: <https://doi.org/10.1101/2020.04.25.20079103> PubMed PMID.
- 489 8. Buitrago-Garcia D, Egli-Gany D, Counotte M, Hossmann S, Imeri H, Salanti G, Low N. The Role
490 of Asymptomatic Sars-Cov-2 Infections: Rapid Living Systematic Review and Meta-Analysis. Version
491 2. medRxiv. [Preprint]. 2020. doi: <https://doi.org/10.1101/2020.04.25.20079103> PubMed PMID.
- 492 9. Liberati A, Altman DG, Tetzlaff J, Mulrow C, Gotzsche PC, Ioannidis JP, Clarke M, Devereaux
493 PJ, Kleijnen J, Moher D. The Prisma Statement for Reporting Systematic Reviews and Meta-Analyses
494 of Studies That Evaluate Health Care Interventions: Explanation and Elaboration. PLoS Med.
495 2009;6(7):e1000100. doi. PubMed PMID.
- 496 10. Counotte M, Imeri H, Ipekci M, Low N. **Covid-19 Living Evidence** Bern: Institute of Social and
497 Preventive Medicine, University of Bern; 2020 [Access Date; cited 2020 09.05.2020]. Covid-19 living
498 evidence landing page]. Available from: <https://ispmbern.github.io/covid-19/living-review/>.
- 499 11. Joanna Briggs Institute. **The Joanna Briggs Institute Critical Appraisal Tools for Use in Jbi**
500 **Systematic Reviews—Checklist for Case Series** Adelaide2017 [Access Date:10.06.2020]. Available
501 from: https://joannabriggs.org/ebp/critical_appraisal_tools.
- 502 12. Boyle MH. Guidelines for Evaluating Prevalence Studies. Evid Based Ment Health.
503 1998;1(2):37-40. doi. PubMed PMID.
- 504 13. Jaime Caro J, Eddy DM, Kan H, Kaltz C, Patel B, Eldessouki R, Briggs AH, Forces I-A-NMCT.
505 Questionnaire to Assess Relevance and Credibility of Modeling Studies for Informing Health Care
506 Decision Making: An Ispor-Amcp-Npc Good Practice Task Force Report. Value Health.
507 2014;17(2):174-82. doi: 10.1016/j.jval.2014.01.003. PubMed PMID: 24636375.

- 508 14. Balduzzi S, Rucker G, Schwarzer G. How to Perform a Meta-Analysis with R: A Practical
509 Tutorial. *Evid Based Ment Health*. 2019;22(4):153-60. Epub 2019/09/30. doi: 10.1136/ebmental-
510 2019-300117. PubMed PMID: 31563865.
- 511 15. Newcombe RG. Two-Sided Confidence Intervals for the Single Proportion: Comparison of
512 Seven Methods. *Stat Med*. 1998;17(8):857-72. doi. PubMed PMID.
- 513 16. Riley RD, Higgins JP, Deeks JJ. Interpretation of Random Effects Meta-Analyses. *BMJ*.
514 2011;342:d549. doi. PubMed PMID.
- 515 17. Bai Y, Yao L, Wei T, Tian F, Jin DY, Chen L, Wang M. Presumed Asymptomatic Carrier
516 Transmission of Covid-19. *JAMA*. 2020;54(0):E017. doi: 10.1001/jama.2020.2565. PubMed PMID.
- 517 18. Chan JF, Yuan S, Kok KH, To KK, Chu H, Yang J, Xing F, Liu J, Yip CC, Poon RW, Tsoi HW, Lo SK,
518 Chan KH, Poon VK, Chan WM, Ip JD, Cai JP, Cheng VC, Chen H, Hui CK, Yuen KY. A Familial Cluster of
519 Pneumonia Associated with the 2019 Novel Coronavirus Indicating Person-to-Person Transmission: A
520 Study of a Family Cluster. *Lancet*. 2020;395(10223):514-23. Epub 2020/01/28. doi: 10.1016/S0140-
521 6736(20)30154-9. PubMed PMID: 31986261; PubMed Central PMCID: 7159286.
- 522 19. Ferretti L, Wymant C, Kendall M, Zhao L, Nurtay A, Abeler-Dorner L, Parker M, Bonsall D,
523 Fraser C. Quantifying Sars-Cov-2 Transmission Suggests Epidemic Control with Digital Contact
524 Tracing. *Science*. 2020;368(6491):2020.03.08.20032946. Epub 2020/04/03. doi:
525 10.1126/science.abb6936. PubMed PMID: 32234805; PubMed Central PMCID: 7164555.
- 526 20. Ganyani T, Kremer C, Chen D, Torneri A, Faes C, Wallinga J, Hens N. Estimating the
527 Generation Interval for Coronavirus Disease (Covid-19) Based on Symptom Onset Data, March 2020.
528 *Euro Surveill*. 2020;25(17):2020.03.05.20031815. Epub 2020/05/07. doi: 10.2807/1560-
529 7917.ES.2020.25.17.2000257. PubMed PMID: 32372755; PubMed Central PMCID: 7201952.
- 530 21. Hu Z, Song C, Xu C, Jin G, Chen Y, Xu X, Ma H, Chen W, Lin Y, Zheng Y, Wang J, Hu Z, Yi Y, Shen
531 H. Clinical Characteristics of 24 Asymptomatic Infections with Covid-19 Screened among Close
532 Contacts in Nanjing, China. *Sci China Life Sci*. 2020;63(5):706-11. Epub 2020/03/09. doi:
533 10.1007/s11427-020-1661-4. PubMed PMID: 32146694; PubMed Central PMCID: 7088568.
- 534 22. Liao J, Fan S, Chen J, Wu J, Xu S, Guo Y, Li C, Zhang X, Wu C, Mou H, Song C, Li F, Wu G, Zhang
535 J, Guo L, Liu H, Lv J, Xu L, Lang C. Epidemiological and Clinical Characteristics of Covid-19 in
536 Adolescents and Young Adults. *medRxiv*. [Preprint]. 2020. doi: 10.1101/2020.03.10.20032136.
537 PubMed PMID.
- 538 23. Luo SH, Liu W, Liu ZJ, Zheng XY, Hong CX, Liu ZR, Liu J, Weng JP. A Confirmed Asymptomatic
539 Carrier of 2019 Novel Coronavirus. *Chin Med J (Engl)*. 2020;133(9):1123-5. Epub 2020/03/10. doi:
540 10.1097/CM9.0000000000000798. PubMed PMID: 32149768.
- 541 24. Mizumoto K, Kagaya K, Zarebski A, Chowell G. Estimating the Asymptomatic Proportion of
542 Coronavirus Disease 2019 (Covid-19) Cases on Board the Diamond Princess Cruise Ship, Yokohama,
543 Japan, 2020. *Euro Surveill*. 2020;25(10). Epub 2020/03/19. doi: 10.2807/1560-
544 7917.ES.2020.25.10.2000180. PubMed PMID: 32183930; PubMed Central PMCID: 7078829.
- 545 25. Nishiura H, Kobayashi T, Suzuki A, Jung SM, Hayashi K, Kinoshita R, Yang Y, Yuan B,
546 Akhmetzhanov AR, Linton NM, Miyama T. Estimation of the Asymptomatic Ratio of Novel
547 Coronavirus Infections (Covid-19). *Int J Infect Dis*. 2020. doi: 10.1016/j.ijid.2020.03.020. PubMed
548 PMID.

- 549 26. Qian G, Yang N, Ma AHY, Wang L, Li G, Chen X, Chen X. A Covid-19 Transmission within a
550 Family Cluster by Presymptomatic Infectors in China. *Clin Infect Dis*. 2020. doi: ciaa316. PubMed
551 PMID.
- 552 27. Tabata S, Imai K, Kawano S, Ikeda M, Kodama T, Miyoshi K, Obinata H, Mimura S, Kodera T,
553 Kitagaki M, Sato M, Suzuki S, Ito T, Uwabe Y, Tamura K. Non-Severe Vs Severe Symptomatic Covid-
554 19: 104 Cases from the Outbreak on the Cruise Ship 'Diamond Princess' in Japan. medRxiv.
555 [Preprint]. 2020. doi: 10.1101/2020.03.18.20038125. PubMed PMID.
- 556 28. Arima Y, Shimada T, Suzuki M, Suzuki T, Kobayashi Y, Tsuchihashi Y, Nakamura H,
557 Matsumoto K, Takeda A, Kadokura K, Sato T, Yahata Y, Nakajima N, Tobiume M, Takayama I,
558 Kageyama T, Saito S, Nao N, Matsui T, Sunagawa T, Hasegawa H, Ohnishi M, Wakita T. Severe Acute
559 Respiratory Syndrome Coronavirus 2 Infection among Returnees to Japan from Wuhan, China, 2020.
560 *Emerg Infect Dis*. 2020;26(7). Epub 2020/04/11. doi: 10.3201/eid2607.200994. PubMed PMID:
561 32275498.
- 562 29. Breslin N, Baptiste C, Gyamfi-Bannerman C, Miller R, Martinez R, Bernstein K, Ring L, Landau
563 R, Purisch S, Friedman AM, Fuchs K, Sutton D, Andrikopoulou M, Rupley D, Sheen JJ, Aubey J, Zork N,
564 Moroz L, Mourad M, Wapner R, Simpson LL, D'Alton ME, Goffman D. Covid-19 Infection among
565 Asymptomatic and Symptomatic Pregnant Women: Two Weeks of Confirmed Presentations to an
566 Affiliated Pair of New York City Hospitals. *Am J Obstet Gynecol MFM*. 2020:100118. Epub
567 2020/04/16. doi: 10.1016/j.ajogmf.2020.100118. PubMed PMID: 32292903; PubMed Central PMCID:
568 PMC7144599.
- 569 30. Le TQM, Takemura T, Moi ML, Nabeshima T, Nguyen LKH, Hoang VMP, Ung THT, Le TT,
570 Nguyen VS, Pham HQA, Duong TN, Nguyen HT, Ngu DN, Nguyen CK, Morita K, Hasebe F, Dang DA.
571 Severe Acute Respiratory Syndrome Coronavirus 2 Shedding by Travelers, Vietnam, 2020. *Emerg*
572 *Infect Dis*. 2020. doi: 10.3201/eid2607.200591. PubMed PMID.
- 573 31. Chang L, Zhao L, Gong H, Wang L, Wang L. Severe Acute Respiratory Syndrome Coronavirus 2
574 Rna Detected in Blood Donations. *Emerg Infect Dis*. 2020;26(7). Epub 2020/04/04. doi:
575 10.3201/eid2607.200839. PubMed PMID: 32243255.
- 576 32. Danis K, Epaulard O, Benet T, Gaymard A, Campoy S, Bothelo-Nevers E, Bouscambert-
577 Duchamp M, Spaccaferri G, Ader F, Mailles A, Boudalaa Z, Tolsma V, Berra J, Vaux S, Forestier E,
578 Landelle C, Fougere E, Thabuis A, Berthelot P, Veil R, Levy-Bruhl D, Chidiac C, Lina B, Coignard B,
579 Saura C, Investigation Team. Cluster of Coronavirus Disease 2019 (Covid-19) in the French Alps,
580 2020. *Clin Infect Dis*. 2020. Epub 2020/04/12. doi: 10.1093/cid/ciaa424. PubMed PMID: 32277759;
581 PubMed Central PMCID: 7184384.
- 582 33. He X, Lau EHY, Wu P, Deng X, Wang J, Hao X, Lau YC, Wong JY, Guan Y, Tan X, Mo X, Chen Y,
583 Liao B, Chen W, Hu F, Zhang Q, Zhong M, Wu Y, Zhao L, Zhang F, Cowling BJ, Li F, Leung GM.
584 Temporal Dynamics in Viral Shedding and Transmissibility of Covid-19. *Nat Med*. 2020. Epub
585 2020/04/17. doi: 10.1038/s41591-020-0869-5. PubMed PMID: 32296168.
- 586 34. Hoehl S, Rabenau H, Berger A, Kortenbusch M, Cinatl J, Bojkova D, Behrens P, Boddinghaus
587 B, Gotsch U, Naujoks F, Neumann P, Schork J, Tiarks-Jungk P, Walczok A, Eickmann M, Vehreschild
588 M, Kann G, Wolf T, Gottschalk R, Ciesek S. Evidence of Sars-Cov-2 Infection in Returning Travelers
589 from Wuhan, China. *N Engl J Med*. 2020;382(13):1278-80. Epub 2020/02/19. doi:
590 10.1056/NEJMc2001899. PubMed PMID: 32069388; PubMed Central PMCID: 7121749.

- 591 35. Kimball A, Hatfield KM, Arons M, James A, Taylor J, Spicer K, Bardossy AC, Oakley LP, Tanwar
592 S, Chisty Z, Bell JM, Methner M, Harney J, Jacobs JR, Carlson CM, McLaughlin HP, Stone N, Clark S,
593 Brostrom-Smith C, Page LC, Kay M, Lewis J, Russell D, Hiatt B, Gant J, Duchin JS, Clark TA, Honein MA,
594 Reddy SC, Jernigan JA, Public Health S, King C, Team CC-I. Asymptomatic and Presymptomatic Sars-
595 Cov-2 Infections in Residents of a Long-Term Care Skilled Nursing Facility - King County, Washington,
596 March 2020. *MMWR Morb Mortal Wkly Rep.* 2020;69(13):377-81. Epub 2020/04/03. doi:
597 10.15585/mmwr.mm6913e1. PubMed PMID: 32240128; PubMed Central PMCID: PMC7119514
- 598 36. Luo L, Liu D, Liao X-l, Wu X-b, Jing Q-l, Zheng J-z, Liu F-h, Yang S-g, Bi B, Li Z-h, Liu J-p, Song
599 W-q, Zhu W, Wang Z-h, Zhang X-r, Chen P-l, Liu H-m, Cheng X, Cai M-c, Huang Q-m, Yang P, Yang X-f,
600 Huang Z-g, Tang J-l, Ma Y, Mao C. Modes of Contact and Risk of Transmission in Covid-19 among
601 Close Contacts. *bioRxiv. [Preprint].* 2020. doi: 10.1101/2020.03.24.20042606. PubMed PMID.
- 602 37. Lytras T, Dellis G, Flountzi A, Hatzianastasiou S, Nikolopoulou G, Tsekou K, Diamantis Z,
603 Stathopoulou G, Togka M, Gerolymatos G, Rigakos G, Sapounas S, Tsiodras S. High Prevalence of
604 Sars-Cov-2 Infection in Repatriation Flights to Greece from Three European Countries. *J Travel Med.*
605 2020. Epub 2020/04/17. doi: 10.1093/jtm/taaa054. PubMed PMID: 32297940; PubMed Central
606 PMCID: 7184451.
- 607 38. Meng H, Xiong R, He R, Lin W, Hao B, Zhang L, Lu Z, Shen X, Fan T, Jiang W, Yang W, Li T,
608 Chen J, Geng Q. Ct Imaging and Clinical Course of Asymptomatic Cases with Covid-19 Pneumonia at
609 Admission in Wuhan, China. *J Infect.* 2020. Epub 2020/04/16. doi: 10.1016/j.jinf.2020.04.004.
610 PubMed PMID: 32294504; PubMed Central PMCID: 7152865.
- 611 39. Pongpirul WA, Mott JA, Woodring JV, Uyeki TM, MacArthur JR, Vachiraphan A,
612 Suwanvattana P, Uttayamakul S, Chunsuttiwat S, Chotpitayasunondh T, Pongpirul K, Prasithsirikul W.
613 Clinical Characteristics of Patients Hospitalized with Coronavirus Disease, Thailand. *Emerg Infect Dis.*
614 2020;26(7). Epub 2020/04/09. doi: 10.3201/eid2607.200598. PubMed PMID: 32267826.
- 615 40. Qiu H, Wu J, Hong L, Luo Y, Song Q, Chen D. Clinical and Epidemiological Features of 36
616 Children with Coronavirus Disease 2019 (Covid-19) in Zhejiang, China: An Observational Cohort
617 Study. *Lancet Infect Dis.* 2020. Epub 2020/03/30. doi: 10.1016/S1473-3099(20)30198-5. PubMed
618 PMID: 32220650; PubMed Central PMCID: PMC7158906.
- 619 41. See KC, Liew SM, Ng DCE, Chew EL, Khoo EM, Sam CH, Sheena D, Zahilah Filzah Z, Chin SY,
620 Lee PY, Tan LP, Farah Najwa Z, Sabrina S, Them WW, Saipriya T, Muhammad Zamakhshari ZA, Cheah
621 WK, Peariasamy K, Goh PP, Ibrahim H. Covid-19: Four Paediatric Cases in Malaysia. *Int J Infect Dis.*
622 2020;94:125-7. Epub 2020/04/19. doi: 10.1016/j.ijid.2020.03.049. PubMed PMID: 32304822;
623 PubMed Central PMCID: PMC7158792.
- 624 42. Tan YP, Tan BY, Pan J, Wu J, Zeng SZ, Wei HY. Epidemiologic and Clinical Characteristics of 10
625 Children with Coronavirus Disease 2019 in Changsha, China. *J Clin Virol.* 2020;127(NA):104353. Epub
626 2020/04/18. doi: 10.1016/j.jcv.2020.104353. PubMed PMID: 32302953; PubMed Central PMCID:
627 PMC7195108.
- 628 43. Tian S, Wu M, Chang Z, Wang Y, Zhou G, Zhang W, Xing J, Tian H, Zhang X, Zou X, Zhang L, Liu
629 M, Chen J, Han J, Ning K, Chen S, Wu T. Epidemiological Investigation and Intergenerational Clinical
630 Characteristics of 24 Covid-19 Patients Associated with Supermarket Cluster. *bioRxiv. [Preprint].*
631 2020. doi: 10.1101/2020.04.11.20058891. PubMed PMID.
- 632 44. Tong ZD, Tang A, Li KF, Li P, Wang HL, Yi JP, Zhang YL, Yan JB. Potential Presymptomatic
633 Transmission of Sars-Cov-2, Zhejiang Province, China, 2020. *Emerg Infect Dis.* 2020;26(5):1052-4.

- 634 Epub 2020/02/25. doi: 10.3201/eid2605.200198. PubMed PMID: 32091386; PubMed Central PMCID:
635 PMC7181913.
- 636 45. Wang X, Fang J, Zhu Y, Chen L, Ding F, Zhou R, Ge L, Wang F, Chen Q, Zhang Y, Zhao Q.
637 Clinical Characteristics of Non-Critically Ill Patients with Novel Coronavirus Infection (Covid-19) in a
638 Fangcang Hospital. *Clin Microbiol Infect.* 2020. Epub 2020/04/07. doi: 10.1016/j.cmi.2020.03.032.
639 PubMed PMID: 32251842; PubMed Central PMCID: PMC7195539.
- 640 46. Wang Y, Liu Y, Liu L, Wang X, Luo N, Ling L. Clinical Outcome of 55 Asymptomatic Cases at
641 the Time of Hospital Admission Infected with Sars-Coronavirus-2 in Shenzhen, China. *J Infect Dis.*
642 2020. Epub 2020/03/18. doi: 10.1093/infdis/jiaa119. PubMed PMID: 32179910; PubMed Central
643 PMCID: PMC7184401.
- 644 47. Wang Z, Ma W, Zheng X, Wu G, Zhang R. Household Transmission of Sars-Cov-2. *J Infect.*
645 2020;NA(NA). Epub 2020/04/14. doi: 10.1016/j.jinf.2020.03.040. PubMed PMID: 32283139; PubMed
646 Central PMCID: PMC7151261.
- 647 48. Yang N, Shen Y, Shi C, Ma AHY, Zhang X, Jian X, Wang L, Shi J, Wu C, Li G, Fu Y, Wang K, Lu M,
648 Qian G. In-Flight Transmission Cluster of Covid-19: A Retrospective Case Series. *bioRxiv.* [Preprint].
649 2020. doi: 10.1101/2020.03.28.20040097. PubMed PMID.
- 650 49. Ye F, Xu S, Rong Z, Xu R, Liu X, Deng P, Liu H, Xu X. Delivery of Infection from Asymptomatic
651 Carriers of Covid-19 in a Familial Cluster. *Int J Infect Dis.* 2020;94:133-8. Epub 2020/04/06. doi:
652 10.1016/j.ijid.2020.03.042. PubMed PMID: 32247826; PubMed Central PMCID: PMC7129961.
- 653 50. Zhang J, Tian S, Lou J, Chen Y. Familial Cluster of Covid-19 Infection from an Asymptomatic.
654 *Crit Care.* 2020;NA(NA). doi: 10.1186/s13054-020-2817-7. PubMed PMID.
- 655 51. Zhang W. Estimating the Presymptomatic Transmission of Covid19 Using Incubation Period
656 and Serial Interval Data. *bioRxiv.* [Preprint]. 2020. doi: 10.1101/2020.04.02.20051318. PubMed
657 PMID.
- 658 52. Zhou X, Li Y, Li T, Zhang W. Follow-up of Asymptomatic Patients with Sars-Cov-2 Infection.
659 *Clin Microbiol Infect.* 2020. Epub 2020/04/03. doi: 10.1016/j.cmi.2020.03.024. PubMed PMID:
660 32234453.
- 661 53. Zou L, Ruan F, Huang M, Liang L, Huang H, Hong Z, Yu J, Kang M, Song Y, Xia J, Guo Q, Song T,
662 He J, Yen HL, Peiris M, Wu J. Sars-Cov-2 Viral Load in Upper Respiratory Specimens of Infected
663 Patients. *N Engl J Med.* 2020;382(12):1177-9. Epub 2020/02/20. doi: 10.1056/NEJMc2001737.
664 PubMed PMID: 32074444; PubMed Central PMCID: PMC7121626.
- 665 54. Alshami AA, Alattas RA, Anan HF, Al Qahtani HS, Al Mulhim MA, Alahilmi AA, Alfaraj AH.
666 Silent Disease and Loss of Taste and Smell Are Common Manifestations of Sars-Cov-2 Infection in a
667 Quarantine Facility: First Report from Saudi Arabia. *MedRxiv.* [Preprint]. 2020. doi:
668 10.1101/2020.05.13.20100222. PubMed PMID.
- 669 55. Al-Shamsi HO, Coomes EA, Alrawi S. Screening for Covid-19 in Asymptomatic Patients with
670 Cancer in a Hospital in the United Arab Emirates. *JAMA Oncol.* 2020. doi:
671 10.1001/jamaoncol.2020.2548. PubMed PMID.
- 672 56. Andrikopoulou M, Madden N, Wen T, Aubey JJ, Aziz A, Baptiste CD, Breslin N, D'Alton ME,
673 Fuchs KM, Goffman D, Gyamfi-Bannerman C, Matseoane-Peterssen DN, Miller RS, Sheen JJ, Simpson
674 LL, Sutton D, Zork N, Friedman AM. Symptoms and Critical Illness among Obstetric Patients with

- 675 Coronavirus Disease 2019 (Covid-19) Infection. *Obstet Gynecol.* 2020. doi:
676 10.1097/AOG.0000000000003996. PubMed PMID.
- 677 57. Angelo Vaira L, Hopkins C, Salzano G, Petrocelli M, Melis A, Cucurullo M, Ferrari M,
678 Gagliardini L, Pipolo C, Deiana G, Fiore V, De Vito A, Turra N, Canu S, Antonio Maglio A, Serra A,
679 Bussu F, Madeddu G, Babudieri S, Giuseppe Fois A, Pirina P, Salzano FA, De Riu P, Biglioli F, De Riu G.
680 Olfactory and Gustatory Function Impairment in Covid-19 Patients: Italian Objective Multicenter-
681 Study. *Head Neck.* 2020. doi: 10.1002/hed.26269. PubMed PMID.
- 682 58. Arons MM, Hatfield KM, Reddy SC, Kimball A, James A, Jacobs JR, Taylor J, Spicer K, Bardossy
683 AC, Oakley LP, Tanwar S, Dyal JW, Harney J, Chisty Z, Bell JM, Methner M, Paul P, Carlson CM,
684 McLaughlin HP, Thornburg N, Tong S, Tamin A, Tao Y, Uehara A, Harcourt J, Clark S, Brostrom-Smith
685 C, Page LC, Kay M, Lewis J, Montgomery P, Stone ND, Clark TA, Honein MA, Duchin JS, Jernigan JA.
686 Presymptomatic Sars-Cov-2 Infections and Transmission in a Skilled Nursing Facility. *N Engl J Med.*
687 2020. doi: 10.1056/NEJMoa2008457. PubMed PMID.
- 688 59. Bai K, Liu W, Liu C, Fu Y, Hu J, Qin Y, Zhang Q, Chen H, Xu F, Li C. Clinical Analysis of 25 Novel
689 Coronavirus Infections in Children. *Pediatr Infect Dis J.* 2020. doi: 10.1097/INF.0000000000002740.
690 PubMed PMID.
- 691 60. Bi Q, Wu Y, Mei S, Ye C, Zou X, Zhang Z, Liu X, Wei L, Truelove SA, Zhang T, Gao W, Cheng C,
692 Tang X, Wu X, Wu Y, Sun B, Huang S, Sun Y, Zhang J, Ma T, Lessler J, Feng T. Epidemiology and
693 Transmission of Covid-19 in 391 Cases and 1286 of Their Close Contacts in Shenzhen, China: A
694 Retrospective Cohort Study. *Lancet Infect Dis.* 2020. Epub 2020/05/01. doi: 10.1016/S1473-
695 3099(20)30287-5. PubMed PMID: 32353347; PubMed Central PMCID: PMC7185944.
- 696 61. Bohmer MM, Buchholz U, Corman VM, Hoch M, Katz K, Marosevic DV, Bohm S, Woudenberg
697 T, Ackermann N, Konrad R, Eberle U, Treis B, Dangel A, Bengs K, Fingerle V, Berger A, Hormansdorfer
698 S, Ippisch S, Wicklein B, Grahl A, Portner K, Muller N, Zeitlmann N, Boender TS, Cai W, Reich A, An
699 der Heiden M, Rexroth U, Hamouda O, Schneider J, Veith T, Muhlemann B, Wolfel R, Antwerpen M,
700 Walter M, Protzer U, Liebl B, Haas W, Sing A, Drosten C, Zapf A. Investigation of a Covid-19 Outbreak
701 in Germany Resulting from a Single Travel-Associated Primary Case: A Case Series. *Lancet Infect Dis.*
702 2020. Epub 2020/05/19. doi: 10.1016/S1473-3099(20)30314-5. PubMed PMID: 32422201; PubMed
703 Central PMCID: PMC7228725.
- 704 62. Brandstetter S, Roth S, Harner S, Buntrock-Döpke H, Toncheva A, Borchers N, Gruber R,
705 Ambrosch A, Kabesch M. Symptoms and Immunoglobulin Development in Hospital Staff Exposed to
706 a Sars-Cov-2 Outbreak. *Pediatr Allergy Immunol.* 2020. doi: 10.1111/pai.13278. PubMed PMID.
- 707 63. Casey M, Griffin J, McAloon CG, Byrne AW, Madden JM, McEvoy D, Collins AB, Hunt K,
708 Barber A, Butler F, Lane EA, O'Brien K, Wall P, Walsh KA, More SJ. Estimating Pre-Symptomatic
709 Transmission of Covid-19: A Secondary Analysis Using Published Data. *medRxiv.* [Preprint]. 2020. doi:
710 10.1101/2020.05.08.20094870. PubMed PMID.
- 711 64. Chang MC, Hur J, Park D. Chest Computed Tomography Findings in Asymptomatic Patients
712 with Covid-19. *medRxiv.* [Preprint]. 2020. doi: 10.1101/2020.05.09.20096370. PubMed PMID.
- 713 65. Chaw L, Koh WC, Jamaludin SA, Naing L, Alikhan MF, Wong J. Sars-Cov-2 Transmission in
714 Different Settings: Analysis of Cases and Close Contacts from the Tablighi Cluster in Brunei
715 Darussalam. *medRxiv.* [Preprint]. 2020. doi: 10.1101/2020.05.04.20090043. PubMed PMID.
- 716 66. Cheng HY, Jian SW, Liu DP, Ng TC, Huang WT, Lin HH, Taiwan C-OIT. Contact Tracing
717 Assessment of Covid-19 Transmission Dynamics in Taiwan and Risk at Different Exposure Periods

- 718 before and after Symptom Onset. *JAMA Intern Med.* 2020. Epub 2020/05/02. doi:
719 10.1001/jamainternmed.2020.2020. PubMed PMID: 32356867; PubMed Central PMCID:
720 PMC7195694.
- 721 67. Choe PG, Kang EK, Lee SY, Oh B, Im D, Lee HY, Jung H, Kang CK, Kim MS, Park WB, Choi EH,
722 Cho B, Oh MD, Kim NJ. Selecting Coronavirus Disease 2019 Patients with Negligible Risk of
723 Progression: Early Experience from Non-Hospital Isolation Facility in Korea. *Korean J Intern Med.*
724 2020. doi: 10.3904/kjim.2020.159. PubMed PMID.
- 725 68. Dora AV, Winnett A, Jatt LP, Davar K, Watanabe M, Sohn L, Kern HS, Graber CJ, Goetz MB.
726 Universal and Serial Laboratory Testing for Sars-Cov-2 at a Long-Term Care Skilled Nursing Facility for
727 Veterans - Los Angeles, California, 2020. *MMWR Morb Mortal Wkly Rep.* 2020. doi:
728 10.15585/mmwr.mm6921e1. PubMed PMID.
- 729 69. Emery JC, Russel TW, Liu Y, Hellewell J, Pearson CA, group Cnw, Knight GM, Eggo RM,
730 Kucharski AJ, Funk S, Flasche S, Houben RMGJ. The Contribution of Asymptomatic Sars-Cov-2
731 Infections to Transmission - a Model-Based Analysis of the Diamond Princess Outbreak. medRxiv.
732 [Preprint]. 2020. doi: 10.1101/2020.05.07.20093849. PubMed PMID.
- 733 70. Gao Y, Shi C, Chen Y, Shi P, Liu J, Xiao Y, Shen Y, Chen E. A Cluster of the Corona Virus Disease
734 2019 Caused by Incubation Period Transmission in Wuxi, China. *J Infect.* 2020. doi:
735 10.1016/j.jinf.2020.03.042. PubMed PMID.
- 736 71. Graham N, Junghans C, Downes R, Sendall C, Lai H, McKirdy A, Elliott P, Howard R, Wingfield
737 D, Priestman M, Ciechonska M, Cameron L, Storch M, Crone MA, Freemont PS, Randell P, McLaren R,
738 Lang N, Ladhani S, Sanderson F, Sharp DJ. Sars-Cov-2 Infection, Clinical Features and Outcome of
739 Covid-19 in United Kingdom Nursing Homes. *J Infect.* 2020. doi: 10.1016/j.jinf.2020.05.073. PubMed
740 PMID.
- 741 72. Hijnen D, Marzano AV, Eyerich K, GeurtsvanKessel C, Giménez-Arnau AM, Joly P, Vestergaard
742 C, Sticherling M, Schmidt E. Sars-Cov-2 Transmission from Presymptomatic Meeting Attendee,
743 Germany. *Emerg Infect Dis.* 2020. doi: 10.3201/eid2608.201235. PubMed PMID.
- 744 73. Huang L, Jiang J, Li X, Zhou Y, Xu M, Zhou J. Initial Ct Imaging Characters of an Imported
745 Family Cluster of Covid-19. *Clin Imaging.* 2020. doi: 10.1016/j.clinimag.2020.04.010. PubMed PMID.
- 746 74. Huang R, Zhao H, Wang J, Yan X, Shao H, Wu C. A Family Cluster of Covid-19 Involving an
747 Asymptomatic Case with Persistently Positive Sars-Cov-2 in Anal Swabs. *Travel Med Infect Dis.* 2020.
748 doi: 10.1016/j.tmaid.2020.101745. PubMed PMID.
- 749 75. Jiang X, Luo M, Zou Z, Wang X, Chen C, Qiu J. Asymptomatic Sars-Cov-2 Infected Case with
750 Viral Detection Positive in Stool but Negative in Nasopharyngeal Samples Lasts for 42 Days. *J Med
751 Virol.* 2020. doi: 10.1002/jmv.25941. PubMed PMID.
- 752 76. Jiang XL, Zhang XL, Zhao XN, Li CB, Lei J, Kou ZQ, Sun WK, Hang Y, Gao F, Ji SX, Lin CF, Pang B,
753 Yao MX, Anderson BD, Wang GL, Yao L, Duan LJ, Kang DM, Ma MJ. Transmission Potential of
754 Asymptomatic and Paucisymptomatic Sars-Cov-2 Infections: A Three-Family Cluster Study in China. *J
755 Infect Dis.* 2020. doi: 10.1093/infdis/jiaa206. PubMed PMID.
- 756 77. Kim SE, Jeong HS, Yu Y, Shin SU, Kim S, Oh TH, Kim UJ, Kang SJ, Jang HC, Jung SI, Park KH.
757 Viral Kinetics of Sars-Cov-2 in Asymptomatic Carriers and Presymptomatic Patients. *Int J Infect Dis.*
758 2020. doi: 10.1016/j.ijid.2020.04.083. PubMed PMID.

- 759 78. Kim Y, Chun JY, Baek G. Transmission Onset Distribution of Covid-19 in South Korea.
760 medRxiv. [Preprint]. 2020. doi: 10.1101/2020.05.13.20101246. PubMed PMID.
- 761 79. Kong W, Wang Y, Hu J, Chughtai A, Pu H. Comparison of Clinical and Epidemiological
762 Characteristics of Asymptomatic and Symptomatic Sars-Cov-2 Infection: A Multi-Center Study in
763 Sichuan Province, China. *Travel Med Infect Dis*. 2020. doi: 10.1016/j.tmaid.2020.101754. PubMed
764 PMID.
- 765 80. Kumar R, Bhattacharya B, Meena VP, Aggarwal A, Tripathi M, Soneja M, Mittal A, Singh K,
766 Gupta N, Garg RK, Ratre B, Kumar B, Bhopale S, Tiwari P, Verma A, Bhatnagar S, Mohan A, Wig N,
767 Guleria R. Management of Mild Covid-19: Policy Implications of Initial Experience in India. medRxiv.
768 [Preprint]. 2020. doi: 10.1101/2020.05.20.20107664. PubMed PMID.
- 769 81. Lavezzo E, Franchin E, Ciavarella C, Cuomo-Dannenburg G, Barzon L, Del Vecchio C, Rossi L,
770 Manganelli R, Loregian A, Navarin N, Abate D, Sciro M, Merigliano S, De Canale E, Vanuzzo MC,
771 Besutti V, Saluzzo F, Onelia F, Pacenti M, Parisi S, Carretta G, Donato D, Flor L, Cocchio S, Masi G,
772 Sperduti A, Cattarino L, Salvador R, Nicoletti M, Caldart F, Castelli G, Nieddu E, Labella B, Fava L,
773 Drigo M, Gaythorpe KAM, Imperial College C-RT, Brazzale AR, Toppo S, Trevisan M, Baldo V, Donnelly
774 CA, Ferguson NM, Dorigatti I, Crisanti A. Suppression of a Sars-Cov-2 Outbreak in the Italian
775 Municipality of Vo'. *Nature*. 2020. Epub 2020/07/01. doi: 10.1038/s41586-020-2488-1. PubMed
776 PMID: 32604404.
- 777 82. Lombardi A, Consonni D, Carugno M, Bozzi G, Mangioni D, Muscatello A, Castelli V, Palomba
778 E, Cantu AP, Ceriotti F, Tiso B, Pesatori AC, Riboldi L, Bandera A, Gori A. Characteristics of 1,573
779 Healthcare Workers Who Underwent Nasopharyngeal Swab for Sars-Cov-2 in Milano, Lombardy,
780 Italy. medRxiv. [Preprint]. 2020. doi: 10.1101/2020.05.07.20094276. PubMed PMID.
- 781 83. London V, McLaren R, Atallah F, Cepeda C, McCalla S, Fisher N, Stein JL, Haberman S, Minkoff
782 H. The Relationship between Status at Presentation and Outcomes among Pregnant Women with
783 Covid-19. *Am J Perinatol*. 2020. doi: 10.1055/s-0040-1712164. PubMed PMID.
- 784 84. Lu Y, Li Y, Deng W, Liu M, He Y, Huang L, Lv M, Li J, Du H. Symptomatic Infection Is Associated
785 with Prolonged Duration of Viral Shedding in Mild Coronavirus Disease 2019: A Retrospective Study
786 of 110 Children in Wuhan. *Pediatr Infect Dis J*. 2020. doi: 10.1097/INF.0000000000002729. PubMed
787 PMID.
- 788 85. Luo Y, Trevathan E, Qian Z, Li Y, Li J, Xiao W, Tu N, Zeng Z, Mo P, Xiong Y, Ye G. Asymptomatic
789 Sars-Cov-2 Infection in Household Contacts of a Healthcare Provider, Wuhan, China. *Emerg Infect
790 Dis*. 2020. doi: 10.3201/eid2608.201016. PubMed PMID.
- 791 86. Ma Y, Xu QN, Wang FL, Ma XM, Wang XY, Zhang XG, Zhang ZF. Characteristics of
792 Asymptomatic Patients with Sars-Cov-2 Infection in Jinan, China. *Microbes Infect*. 2020. doi:
793 10.1016/j.micinf.2020.04.011. PubMed PMID.
- 794 87. Melgosa M, Madrid A, Álvarez O, Lumbreras J, Nieto F, Parada E, Perez-Beltrán V. Sars-Cov-2
795 Infection in Spanish Children with Chronic Kidney Pathologies. *Pediatr Nephrol*. 2020. doi:
796 10.1007/s00467-020-04597-1. PubMed PMID.
- 797 88. Merza MA, Haleem Al Mezeri AA, Mohammed HM, Abdulah DM. Covid-19 Outbreak in Iraqi
798 Kurdistan: The First Report Characterizing Epidemiological, Clinical, Laboratory, and Radiological
799 Findings of the Disease. *Diabetes Metab Syndr Clin Res Rev*. 2020. doi: 10.1016/j.dsx.2020.04.047.
800 PubMed PMID.

- 801 89. Noh JY, Yoon JG, Seong H, Choi WS, Sohn JW, Cheong HJ, Kim WJ, Song JY. Asymptomatic
802 Infection and Atypical Manifestations of Covid-19: Comparison of Viral Shedding Duration. *J Infect.*
803 2020. doi: 10.1016/j.jinf.2020.05.035. PubMed PMID.
- 804 90. Park SY, Kim YM, Yi S, Lee S, Na BJ, Kim CB, Kim JI, Kim HS, Kim YB, Park Y, Huh IS, Kim HK,
805 Yoon HJ, Jang H, Kim K, Chang Y, Kim I, Lee H, Gwack J, Kim SS, Kim M, Kweon S, Choe YJ, Park O,
806 Park YJ, Jeong EK. Coronavirus Disease Outbreak in Call Center, South Korea. *Emerg Infect Dis.* 2020.
807 doi: 10.3201/eid2608.201274. PubMed PMID.
- 808 91. Peak CM, Kahn R, Grad YH, Childs LM, Li R, Lipsitch M, Buckee CO. Individual Quarantine
809 Versus Active Monitoring of Contacts for the Mitigation of Covid-19: A Modelling Study. *Lancet*
810 *Infect Dis.* 2020. doi: 10.1016/S1473-3099(20)30361-3. PubMed PMID.
- 811 92. Qiu C, Deng Z, Xiao Q, Shu Y, Deng Y, Wang H, Liao X, Liu H, Zhou D, Zhao X, Zhou J, Wang J,
812 Shi Z, Long D. Transmission and Clinical Characteristics of Coronavirus Disease 2019 in 104 Outside-
813 Wuhan Patients, China. *J Med Virol.* 2020. doi: 10.1002/jmv.25975. PubMed PMID.
- 814 93. Rivett L, Sridhar S, Sparkes D, Routledge M, Jones NK, Forrest S, Young J, Pereira-Dias J,
815 Hamilton WL, Ferris M, Torok ME, Meredith L, Collaboration C-NC-B, Curran MD, Fuller S, Chaudhry
816 A, Shaw A, Samworth RJ, Bradley JR, Dougan G, Smith KGC, Lehner PJ, Matheson NJ, Wright G,
817 Goodfellow IG, Baker S, Weekes MP. Screening of Healthcare Workers for Sars-Cov-2 Highlights the
818 Role of Asymptomatic Carriage in Covid-19 Transmission. *Elife.* 2020;9. Epub 2020/05/12. doi:
819 10.7554/eLife.58728. PubMed PMID: 32392129.
- 820 94. Roxby AC, Greninger AL, Hatfield KM, Lynch JB, Dellit TH, James A, Taylor J, Page LC, Kimball
821 A, Arons M, Munanga A, Stone N, Jernigan JA, Reddy SC, Lewis J, Cohen SA, Jerome KR, Duchin JS,
822 Neme S. Outbreak Investigation of Covid-19 among Residents and Staff of an Independent and
823 Assisted Living Community for Older Adults in Seattle, Washington. *JAMA Intern Med.* 2020. doi:
824 10.1001/jamainternmed.2020.2233. PubMed PMID.
- 825 95. Schwierzeck V, König JC, Kühn J, Mellmann A, Correa-Martínez CL, Omran H, Konrad M,
826 Kaiser T, Kampmeier S. First Reported Nosocomial Outbreak of Severe Acute Respiratory Syndrome
827 Coronavirus 2 (Sars-Cov-2) in a Pediatric Dialysis Unit. *Clin Infect Dis.* 2020. doi: 10.1093/cid/ciaa491.
828 PubMed PMID.
- 829 96. Sharma AK, Ahmed A, Baig VN, Dhakad P, Dalela G, Kacker S, Panwar VR, Panwar RB, Gupta
830 R. Characteristics and Outcomes of Hospitalized Young Adults with Mild to Moderate Covid-19 at a
831 University Hospital in India. *medRxiv.* [Preprint]. 2020. doi: 10.1101/2020.06.02.20106310. PubMed
832 PMID.
- 833 97. Solbach W, Schiffner J, Backhaus I, Burger D, Staiger R, Tiemer B, Bobrowski A, Hutchings T,
834 Mischnik A. Antibody Profiling of Covid-19 Patients in an Urban Low-Incidence Region in Northern
835 Germany. *medRxiv.* [Preprint]. 2020. doi: 10.1101/2020.05.30.20111393. PubMed PMID.
- 836 98. Song W, Li J, Zou N, Guan W, Pan J, Xu W. Clinical Features of Pediatric Patients with
837 Coronavirus Disease (Covid-19). *J Clin Virol.* 2020. doi: 10.1016/j.jcv.2020.104377. PubMed PMID.
- 838 99. Tan X, Huang J, Zhao F, Zhou Y, Li JQ, Wang XY. [Clinical Features of Children with Sars-Cov-2
839 Infection: An Analysis of 13 Cases from Changsha, China]. *Zhongguo Dang Dai Er Ke Za Zhi.* 2020. doi:
840 10.7499/j.issn.1008-8830.2003199. PubMed PMID.
- 841 100. Pham TQ, Rabaa MA, Duong LH, Dang TQ, Tran QD, Quach HL, Hoang NA, Phung DC, Ngu ND,
842 Tran AT, La NQ, Tran MP, Vinh C, Nguyen KC, Anh DD, T.N. D, Thwaites GE, van Doorn HR, Choisy M,

- 843 OUCRU Covid-19 Research Group. The First 100 Days of Sars-Cov-2 Control in Vietnam. medRxiv.
844 [Preprint]. 2020. doi: 10.1101/2020.05.12.20099242. PubMed PMID.
- 845 101. Treibel TA, Manisty C, Burton M, McKnight NA, Lambourne J, Augusto JB, Couto-Parada X,
846 Cutino-Moguel T, Noursadeghi M, Moon JC. Covid-19: Pcr Screening of Asymptomatic Health-Care
847 Workers at London Hospital. *Lancet*. 2020. doi: 10.1016/S0140-6736(20)31100-4. PubMed PMID.
- 848 102. Wang Y, Tong J, Qin Y, Xie T, Li J, Li J, Xiang J, Cui Y, Higgs ES, Xiang J, He Y. Characterization
849 of an Asymptomatic Cohort of Sars-Cov-2 Infected Individuals Outside of Wuhan, China. *Clin Infect*
850 *Dis*. 2020. doi: 10.1093/cid/ciaa629. PubMed PMID.
- 851 103. Wong J, Abdul Aziz ABZ, Chaw L, Mahamud A, Griffith MM, Ying-Ru LO, Naing L. High
852 Proportion of Asymptomatic and Presymptomatic Covid-19 Infections in Travelers and Returning
853 Residents to Brunei. *J Travel Med*. 2020. doi: 10.1093/jtm/taaa066. PubMed PMID.
- 854 104. Wu HP, Li BF, Chen X, Hu HZ, Jiang SA, Cheng H, Hu XH, Tang JX, Zhong FC, Zeng LW, Yu W,
855 Yuan Y, Wu XF, Li YP, Zheng ZL, Pan TB, Wu ZX, Yuan JF, Chen Q. Clinical Features of Coronavirus
856 Disease 2019 in Children Aged <18 Years in Jiangxi, China: An Analysis of 23 Cases. *Zhongguo Dang*
857 *Dai Er Ke Za Zhi*. 2020. doi: PubMed PMID.
- 858 105. Wu J, Huang Y, Tu C, Bi C, Chen Z, Luo L, Huang M, Chen M, Tan C, Wang Z, Wang K, Liang Y,
859 Huang J, Zheng X, Liu J. Household Transmission of Sars-Cov-2, Zhuhai, China, 2020. *Clin Infect Dis*.
860 2020. doi: 10.1093/cid/ciaa557. PubMed PMID.
- 861 106. Xu H, Liu E, Xie J, Smyth R, Zhou Q, Zhao R, Zang N, Long X, Tang Y, Estill J, Yang S, Zhu J, Yan
862 X, Gong F, Tian W, Zhou X, Mo Y, Xiao H, Tang Z, Chen Y, Wang Y, Cui Y, Fang X, Li F, Tian Y, Li P, Deng
863 Q, Ren C, He R, Li Y, Qin H, Wang A, Deng H, Wu J, Meng W, Li W, Zhao Y, Luo Z, Wang Z, Cheng Y,
864 Wang G, Li Q. A Follow-up Study of Children Infected with Sars-Cov-2 from Western China. medRxiv.
865 [Preprint]. 2020. doi: 10.1101/2020.04.20.20073288. PubMed PMID.
- 866 107. Xu T, Huang R, Zhu L, Wang J, Cheng J, Zhang B, Zhao H, Chen K, Shao H, Zhu C, Wu C, Liu L.
867 Epidemiological and Clinical Features of Asymptomatic Patients with Sars-Cov-2 Infection. *J Med*
868 *Virol*. 2020. doi: 10.1002/jmv.25944. PubMed PMID.
- 869 108. Yang R, Gui X, Xiong Y. Comparison of Clinical Characteristics of Patients with Asymptomatic
870 Vs Symptomatic Coronavirus Disease 2019 in Wuhan, China. *JAMA Netw Open*. 2020. doi:
871 10.1001/jamanetworkopen.2020.10182. PubMed PMID.
- 872 109. Yongchen Z, Shen H, Wang X, Shi X, Li Y, Yan J, Chen Y, Gu B. Different Longitudinal Patterns
873 of Nucleic Acid and Serology Testing Results Based on Disease Severity of Covid-19 Patients. *Emerg*
874 *Microbes Infect*. 2020. doi: 10.1080/22221751.2020.1756699. PubMed PMID.
- 875 110. Zhang B, Liu S, Dong Y, Zhang L, Zhong Q, Zou Y, Zhang S. Positive Rectal Swabs in Young
876 Patients Recovered from Coronavirus Disease 2019 (Covid-19). *J Infect*. 2020. doi:
877 10.1016/j.jinf.2020.04.023. PubMed PMID.
- 878 111. Zhang W, Cheng W, Luo L, Ma Y, Xu C, Qin P, Zhang Z. Secondary Transmission of
879 Coronavirus Disease from Presymptomatic Persons, China. *Emerg Infect Dis*. 2020. doi:
880 10.3201/eid2608.201142. PubMed PMID.
- 881 112. Zhang W, Long Q, Huang Y, Chen C, Wu J, Hong Y, Zhou H, Wu W. Asymptomatic Covid-19
882 Have Longer Treatment Cycle Than Moderate Type of Confirmed Patients. medRxiv. [Preprint]. 2020.
883 doi: 10.1101/2020.05.16.20103796. PubMed PMID.

- 884 113. Zhang Z, Xiao T, Wang Y, Yuan J, Ye H, Wei L, Wang H, Liao X, Qian S, Wang Z, Liu L. Early
885 Viral Clearance and Antibody Kinetics of Covid-19 among Asymptomatic Carriers. medRxiv.
886 [Preprint]. 2020. doi: 10.1101/2020.04.28.20083139. PubMed PMID.
- 887 114. Zhou R, Li F, Chen F, Liu H, Zheng J, Lei C, Wu X. Viral Dynamics in Asymptomatic Patients
888 with Covid-19. Int J Infect Dis. 2020. doi: 10.1016/j.ijid.2020.05.030. PubMed PMID.
- 889 115. Savvides C, Siegel R. Asymptomatic and Presymptomatic Transmission of Sars-Cov-2: A
890 Systematic Review. medRxiv [Preprint]. 2020:2020.06.11.20129072. doi:
891 10.1101/2020.06.11.20129072. PubMed PMID: 32587980.
- 892 116. Chau NVV, Thanh Lam V, Thanh Dung N, Yen LM, Minh NNQ, Hung LM, Ngoc NM, Dung NT,
893 Man DNH, Nguyet LA, Nhat LTH, Nhu LNT, Ny NTH, Hong NTT, Kestelyn E, Dung NTP, Xuan TC, Hien
894 TT, Thanh Phong N, Tu TNH, Geskus RB, Thanh TT, Thanh Truong N, Binh NT, Thuong TC, Thwaites G,
895 Tan LV. The Natural History and Transmission Potential of Asymptomatic Sars-Cov-2 Infection. Clin
896 Infect Dis. 2020. doi: ciaa711. PubMed PMID.
- 897 117. Kucirka LM, Lauer SA, Laeyendecker O, Boon D, Lessler J. Variation in False-Negative Rate of
898 Reverse Transcriptase Polymerase Chain Reaction-Based Sars-Cov-2 Tests by Time since Exposure.
899 Ann Intern Med. 2020. Epub 2020/05/19. doi: 10.7326/M20-1495. PubMed PMID: 32422057;
900 PubMed Central PMCID: PMC7240870.
- 901 118. Heneghan C, Brassey J, Jefferson T. **Covid-19: What Proportion Are Asymptomatic?** Oxford:
902 Centre for Evidence Based Medicine; 2020 [Access Date:updated 06.04.202023.04.2020]. Available
903 from: <https://www.cebm.net/covid-19/covid-19-what-proportion-are-asymptomatic/>.
- 904 119. He J, Guo Y, Mao R, Zhang J. Proportion of Asymptomatic Coronavirus Disease 2019 (Covid-
905 19): A Systematic Review and Meta-Analysis. J Med Virol. 2020. Epub 2020/07/22. doi:
906 10.1002/jmv.26326. PubMed PMID: 32691881.
- 907 120. Beale S, Hayward A, Shallcross L, Aldridge RW, Fragaszy E. A Rapid Review of the
908 Asymptomatic Proportion of Pcr-Confirmed Sars-Cov-2 Infections in Community Settings. medRxiv.
909 [Preprint]. 2020:2020.05.20.20108183. doi: 10.1101/2020.05.20.20108183. PubMed PMID.
- 910 121. Byambasuren O, Cardona M, Bell K, Clark J, McLaws ML, Glasziou P. Estimating the Extent of
911 True Asymptomatic Covid-19 and Its Potential for Community Transmission: Systematic Review and
912 Meta-Analysis. MedRxiv. [Preprint]. 2020. doi: 10.1101/2020.05.10.20097543. PubMed PMID.
- 913 122. Day M. Covid-19: Four Fifths of Cases Are Asymptomatic, China Figures Indicate. BMJ.
914 2020;369:m1375. Epub 2020/04/04. doi: 10.1136/bmj.m1375. PubMed PMID: 32241884.
- 915 123. Deeks JJ, Dinnes J, Takwoingi Y, Davenport C, Spijker R, Taylor-Phillips S, Adriano A, Beese S,
916 Dretzke J, Ferrante di Ruffano L, Harris IM, Price MJ, Dittich S, Emperador D, Hooft L, Leeflang MM,
917 Van den Bruel A, Cochrane C-DTAG. Antibody Tests for Identification of Current and Past Infection
918 with Sars-Cov-2. Cochrane Database Syst Rev. 2020;6:CD013652. Epub 2020/06/26. doi:
919 10.1002/14651858.CD013652. PubMed PMID: 32584464.
- 920 124. Wei WE, Li Z, Chiew CJ, Yong SE, Toh MP, Lee VJ. Presymptomatic Transmission of Sars-Cov-2
921 - Singapore, January 23-March 16, 2020. MMWR Morb Mortal Wkly Rep. 2020;69(14):411-5. Epub
922 2020/04/10. doi: 10.15585/mmwr.mm6914e1. PubMed PMID: 32271722; PubMed Central PMCID:
923 PMC7147908

- 924 125. Long QX, Tang XJ, Shi QL, Li Q, Deng HJ, Yuan J, Hu JL, Xu W, Zhang Y, Lv FJ, Su K, Zhang F,
925 Gong J, Wu B, Liu XM, Li JJ, Qiu JF, Chen J, Huang AL. Clinical and Immunological Assessment of
926 Asymptomatic Sars-Cov-2 Infections. Nat Med. 2020. Epub 2020/06/20. doi: 10.1038/s41591-020-
927 0965-6. PubMed PMID: 32555424.
- 928 126. Ludvigsson JF. Systematic Review of Covid-19 in Children Shows Milder Cases and a Better
929 Prognosis Than Adults. Acta Paediatr. 2020;109(6):1088-95. Epub 2020/03/24. doi:
930 10.1111/apa.15270. PubMed PMID: 32202343; PubMed Central PMCID: PMC7228328.
- 931 127. von Wyl V, Bonhoeffer S, Bugnion E, Puhan MA, Salathe M, Stadler T, Troncoso C, Vayena E,
932 Low N. A Research Agenda for Digital Proximity Tracing Apps. Swiss Med Wkly. 2020;150:w20324.
933 Epub 2020/07/17. doi: 10.4414/smw.2020.20324. PubMed PMID: 32672340.
- 934