

ISARIC Clinical Data Report 8 June 2020

International Severe Acute Respiratory and emerging Infections Consortium

Matthew Hall^{*2}, Mark Pritchard^{*3,4}, Emmanuelle A. Dankwa^{*1}, J. Kenneth Baillie^{5,6}, Gail Carson³, Annemarie Docherty^{5,7}, Christl A. Donnelly^{1,8}, Jake Dunning^{3, 17, 18}, Christophe Fraser⁹, Hayley Hardwick^{10,11}, Ewen M. Harrison⁷, Karl A. Holden¹², Kalyann Kennon¹³, James Lee³, Peter J.M. Openshaw¹⁷, Daniel Plotkin³, Amanda Rojek^{3, 19, 20}, Clark D. Russell¹⁴, Malcolm G. Semple^{15,16}, Louise Sigfrid³, Peter Horby³, Piero Olliaro³, Laura Merson^{^3,13}, on behalf of the ISARIC COVID-19 Partners~

*contributed equally

^Correspondence to: Laura.Merson@ndm.ox.ac.uk

~participants are listed at <https://isaric.tghn.org/covid-19-data-management-hosting-contributors/>

1 Department of Statistics, University of Oxford, Oxford, UK

2 Big Data Institute, University of Oxford, Oxford, UK

3 ISARIC, Centre for Tropical Medicine and Global Health, Nuffield Department of Medicine, University of Oxford, Oxford, UK

4 Oxford University Hospitals NHS Foundation Trust, Oxford, UK

5 Intensive Care Unit, Royal Infirmary Edinburgh, Edinburgh, UK

6 Roslin Institute, University of Edinburgh, Edinburgh, UK

7 Centre for Medical Informatics, Usher Institute, University of Edinburgh, Edinburgh, UK

8 MRC Centre for Global Infectious Disease Analysis, Department of Infectious Disease Epidemiology, Imperial College London, London, UK

9 Oxford Big Data Institute, Li Ka Shing Centre for Health Information and Discovery, Nuffield Department of Medicine, University of Oxford, Oxford, UK

10 National Institute of Health Research (NIHR) Health Protection research Unit in Emerging and Zoonotic Infections, Liverpool, UK

11 Institute of Infection and Global Health, Faculty of Health and Life Sciences, University of Liverpool, Liverpool, UK

12 Institute of Translational Medicine, Faculty of Health and Life Sciences, University of Liverpool, Liverpool, UK

13 Infectious Diseases Data Observatory, Centre for Tropical Medicine and Global Health, University of Oxford, Oxford, UK

14 Queen's Medical Research Institute, University of Edinburgh, Edinburgh, UK

15 NIHR Health Protection Research Unit in Emerging and Zoonotic Infections and Institute of Translational Medicine, Faculty of Health and Life Sciences, University of Liverpool, Liverpool, UK

16 Respiratory Medicine, Alder Hey Children's Hospital, Institute in The Park, University of Liverpool, Alder Hey Children's Hospital, Liverpool L12 2AP, UK

17 National Heart and Lung Institute, Faculty of Medicine, Imperial College London

18 Emerging Infections and Zoonoses, National Infection Service, Public Health England, UK

19 Centre for Integrated Critical Care Research, Department of Medicine and Radiology, University of Melbourne, Melbourne, Australia

20 Emergency Medicine, Royal Melbourne Hospital, Melbourne, Australia

Abstract

ISARIC (International Severe Acute Respiratory and emerging Infections Consortium) partnerships and outbreak preparedness initiatives enabled the rapid launch of standardised clinical data collection on COVID-19 in Jan 2020. Extensive global uptake of this resource has resulted in a large, standardised collection of comprehensive clinical data from hundreds of sites across dozens of countries. Data are analysed regularly and reported publicly to inform patient care and public health response. This report is a part of a series and includes the results of data analysis on 8 June 2020.

We thank all of the data contributors for their ongoing support.

As of 8JUN20, data have been entered for 67,130 patients from 488 sites across 37 countries. For this report, we show data for 42,656 patients with confirmed disease who were enrolled >14 days prior.

This update includes about 2,400 new cases from France, and we thank these collaborators for this significant addition to the dataset.

Some highlights from this report

The median time from onset of symptoms to hospital admission is 5 days, but a proportion of patients take longer to get to the hospital (average 14.6 days, standard deviation 8.1).

COVID-19 patients tend to require prolonged hospitalisation; of the 88% with a known outcome the median length of admission to death or discharge is 8 days and the mean 11.5. 17% of patients were admitted to ICU/HDU, about 40% of these on the very day of hospital admission.

Antibiotics were given to 83% of patients, antivirals to 9%, steroids to 15%, which becomes 93%, 50% and 27%, respectively for those admitted to ICU/HDU. Attention has been called on overuse of antibiotics and need to adhere to antibiotic stewardship principles.

67% of patients received some degree of oxygen supplementation: of these 23.4% received NIV and 15% IMV. This relatively high proportion of oxygen use will have implications for oxygen surge planning in healthcare facilities. Some centres may need to plan to boost capacity to deliver oxygen therapy if this is not readily available. WHO provides operational advice on surge strategy

NOTE: This preprint reports new research that has not been certified by peer review and should not be used to guide clinical practice.



ISARIC (International Severe Acute Respiratory and Emerging Infections Consortium)

A global federation of clinical research networks, providing a proficient, coordinated, and agile research response to outbreak-prone infectious diseases

COVID-19 Report: 08 June 2020

Summary

The results in this report have been produced using data from the ISARIC COVID-19 database. For information, or to contribute to the collaboration, please contact ncov@isaric.org.

We thank all of the data contributors for collecting standardised data during these extraordinary times. We plan to issue this report of aggregate data regularly for the duration of the SARS-CoV-2/COVID-19 pandemic.

Please note the following caveats. This is a dynamic report which captures new variables and information as our understanding of COVID-19 evolves. Please observe the N of each result to note newly added variables with fewer data points. Information is incomplete for the many patients who are still being treated. Furthermore, it is likely that that we received more cases of severely ill individuals than those with relatively less severe illness; outcomes from these data, such as the proportion dying, must therefore not be used to infer outcomes for the entire population of people who might become infected. Some patients may be participants in clinical trials of experimental interventions. Many of the included cases are from the United Kingdom. Additional caveats are provided in the in the ‘Caveats’ section below.

Up to the date of this report, data have been entered for **67130** individuals from **488** sites across **37** countries.

The analysis detailed in this report only includes individuals:

1. for whom data collection commenced on or before 25 May 2020. (We have applied a 14-day rule to focus analysis on individuals who are more likely to have a recorded outcome. By excluding patients enrolled during the last 14 days, we aim to reduce the number of incomplete data records and thus improve the generalisability of the results and the accuracy of the outcomes. However, this limits our focus to a restricted cohort despite the much larger volumes of data held in the database.)

AND

2. who have laboratory-confirmed or clinically-diagnosed SARS-COV-2 infection.

The cohort satisfying the above criteria has 42656 cases (98.19% are laboratory-confirmed for SARS-COV-2 infection).

The flow chart in Figure 1 gives an overview of the cohort and outcomes as of 08 June 2020.

Demographics and presenting features

Of these 42656 cases, 24691 are males and 17851 are females – sex is unreported for 114 cases. The minimum and maximum observed ages were 0 and 106 years respectively. The median age is 72 years.

The observed mean number of days from (first) symptom onset to hospital admission was 14.6, with a standard deviation (SD) of 8.1 days and a median of 5 days.

The observed mean duration for the number of days from hospital admission to outcome (death or discharge) was 11.5, with SD 12.1 days and a median of 8 days. These estimates are based on all cases which have complete records on length of hospital stay (N = 37696).

The symptoms on admission represent the policy for hospital admission and containment at that time plus, whatever the case definition was. As time passes for most countries these will change. The five most common symptoms at admission were history of fever, shortness of breath, cough, fatigue/malaise, and confusion. Frequencies of symptom prevalence vary with age.

Outcomes

Outcomes have been recorded for 34608 patients, consisting of 22949 recoveries and 11659 deaths. Follow-up is ongoing for 4411 patients. Outcome records are unavailable for 3637 patients.

ICU/HDU: A total of 7374 (17%) patients were admitted at some point of their illness into an intensive care unit (ICU) or high dependency unit (HDU). Of these, 2441 died, 1094 are still in hospital and 2950 have recovered and been discharged.

The observed mean and median durations (in days) from hospital admission to ICU/HDU admission were 2.8 and 1 respectively (SD: 6.1) – estimated from records on cases with complete date records on hospital admission and ICU/HDU entry (N = 6785).

The duration of stay in ICU/HDU had a mean of 10.8 days and a median of 7.5 (SD: 10.4 days) – estimated on only those cases with complete records for ICU/HDU duration or ICU/HDU start/end dates (N = 5574). Of these 7374 patients who were admitted into ICU/HDU, 2441 died, 1094 are still in hospital and 2950 have recovered and been discharged. Outcome records are unavailable for 889 cases. Approximately 39% of patients with complete records on ICU admission dates were admitted to ICU within the first day of hospital admission. The distribution of the number of days from admission to ICU admission is shown in Figure 11.

Treatment

Antibiotics were received by 29812/35914 (83%) patients, and 3185/35093 (9.1%) received antivirals. These treatment categories are not mutually exclusive since some patients received multiple treatments. (The denominators differ due to data completeness.) 27697/41187 (67.2%) patients received some degree of oxygen supplementation: of these, 6483/27697 (23.4%) received NIV and 4092/27697 (14.8%) IMV.

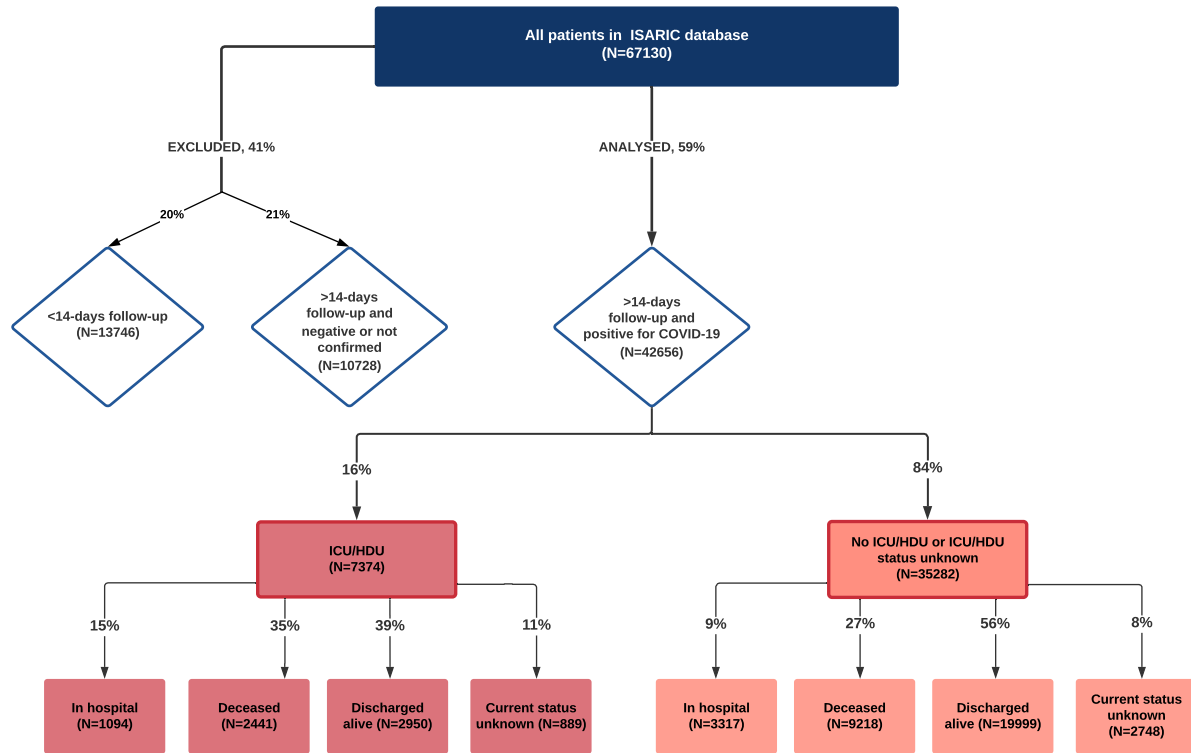
Of the patients admitted into ICU/HDU, 5549/5999 (92.5%) received antibiotics and 4470/8940 (50%) antivirals. 6710/7275 (92.2%) received some degree of oxygen supplementation, of which, 3547/6710 (52.9%) received NIV and 3965/6710 (59.1%) IMV.

A total of 6483 patients received non-invasive mechanical ventilation (NIV). The mean and median durations from admission to receiving NIV were 4.2 days and 2 days respectively (SD: 8.8 days) – estimated from records on cases with complete records on dates of hospital admission and NIV onset (N = 5025). The mean and median durations for NIV were 2.2 days and 0 days respectively (SD: 3.9 days) – estimated based on only those cases which have complete NIV duration records (N = 2977).

A total of 4092 patients received invasive mechanical ventilation (IMV). The mean and median durations from admission to receiving IMV were 3.6 days and 2 days respectively (SD: 7 days) – estimated from records on cases with complete records on dates of hospital admission and IMV onset (N = 3648). The mean, median

and SD for the duration of IMV – estimated based on all 2819 cases with complete records on IMV stays – were 12.6 days, 10 days and 9.7 days respectively.

Figure 1: Overview of cohort and outcomes as of 08 June 2020.



Patient Characteristics

Figure 2: Age and sex distribution of patients. Bar fills are outcome (death/discharge/ongoing care) at the time of report.

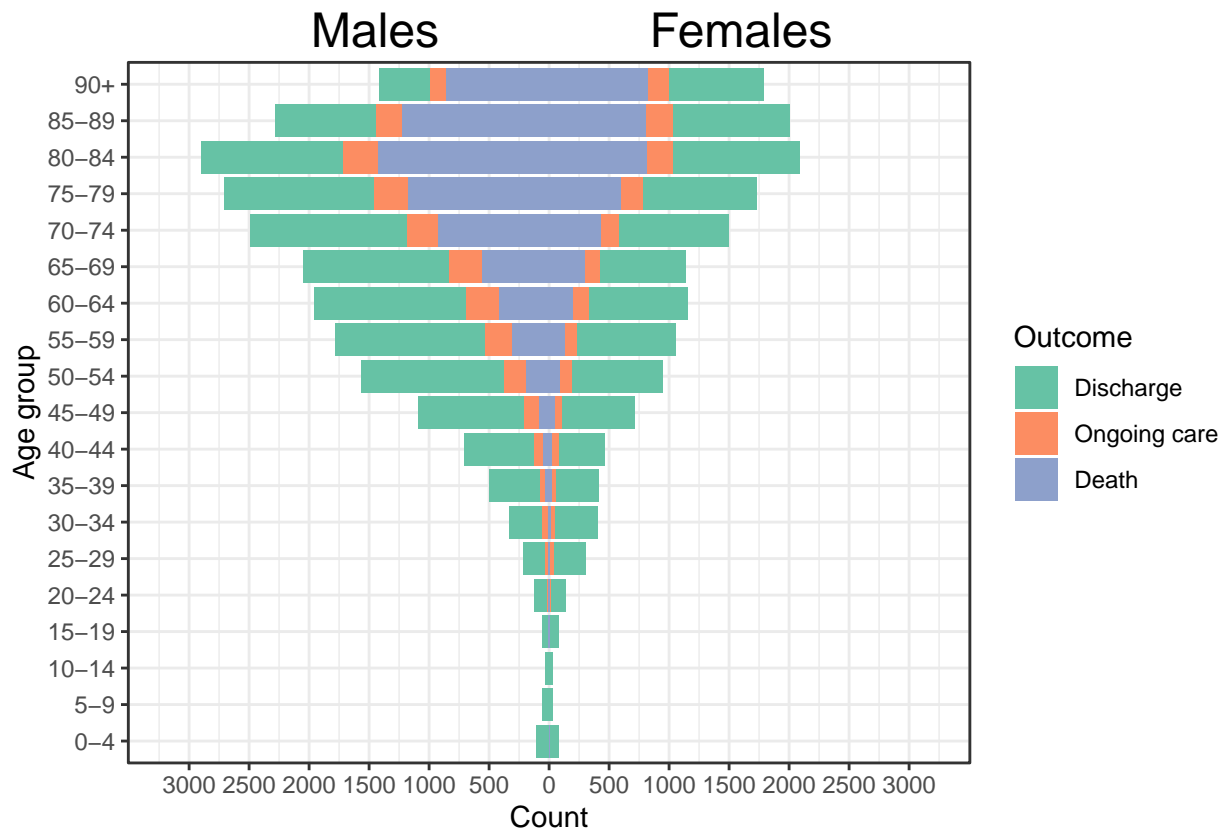
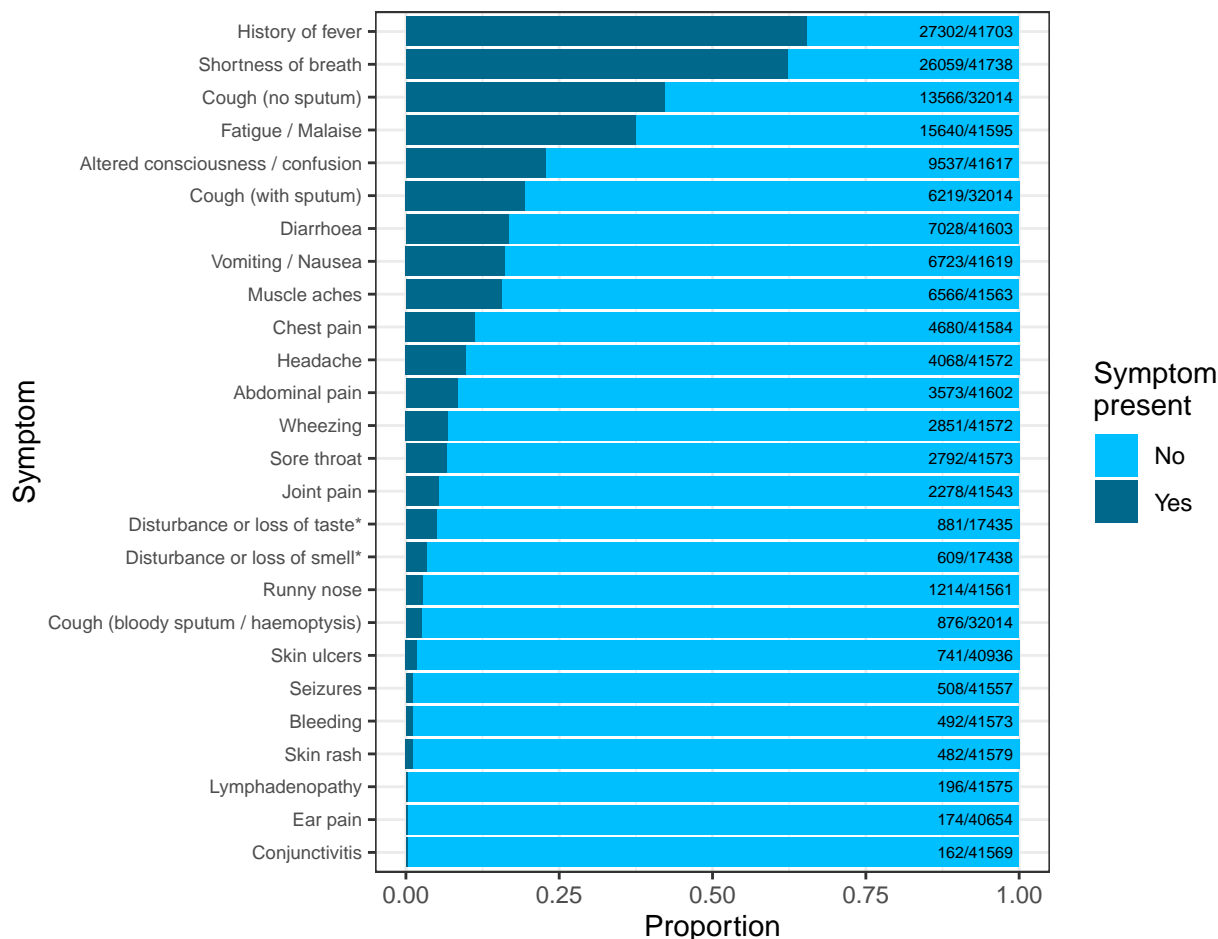


Figure 3: Top: Frequency of symptoms seen at admission amongst COVID-19 patients. Bars are annotated with a fraction representing the number of patients presenting with this symptom over the number of patients for whom presence or absence of this symptom was recorded. **Middle:** The distribution of combinations of the four most common symptoms, amongst all patients for whom these data were recorded. Filled and empty circles below the x-axis indicate the presence or absence of each comorbidity. The “Any other” category contains all remaining symptoms in the top plot. **Bottom:** Heatmap for correlation between symptoms. Fill colour is the phi correlation coefficient for each pair of symptoms, calculated amongst patients with recorded presence or absence of both.



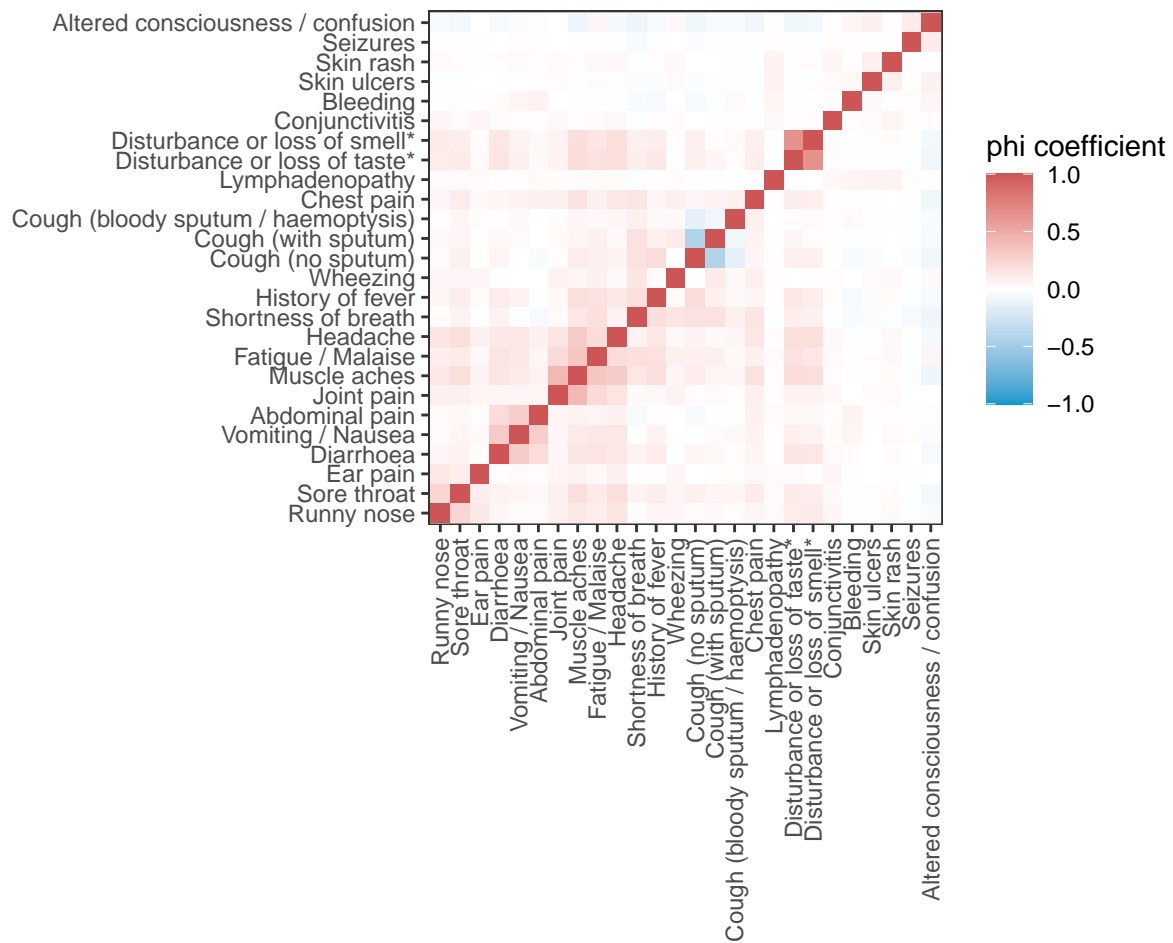
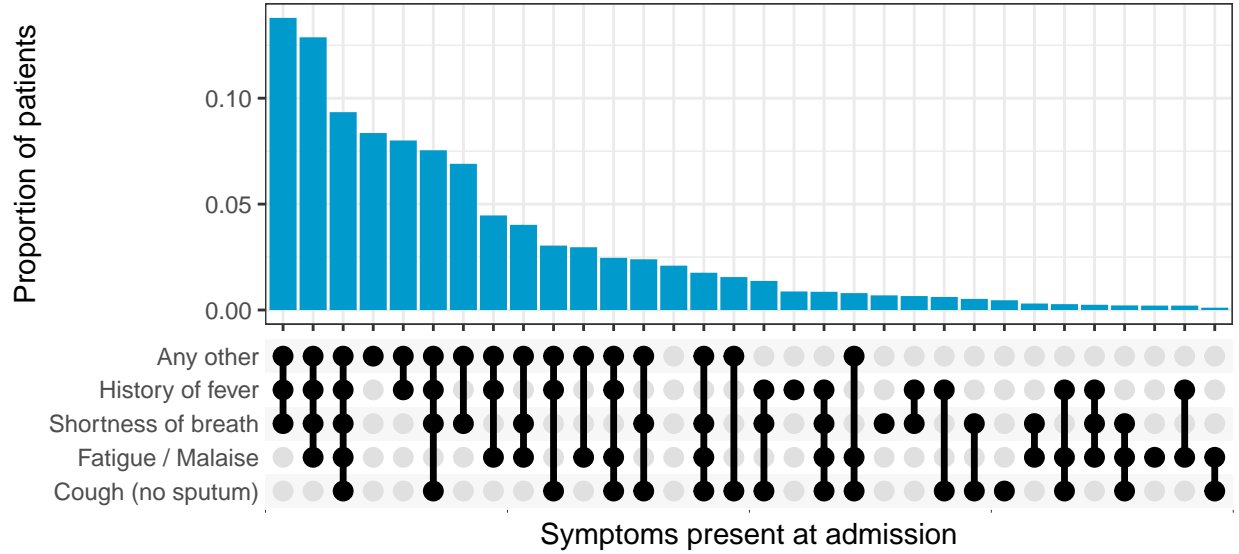
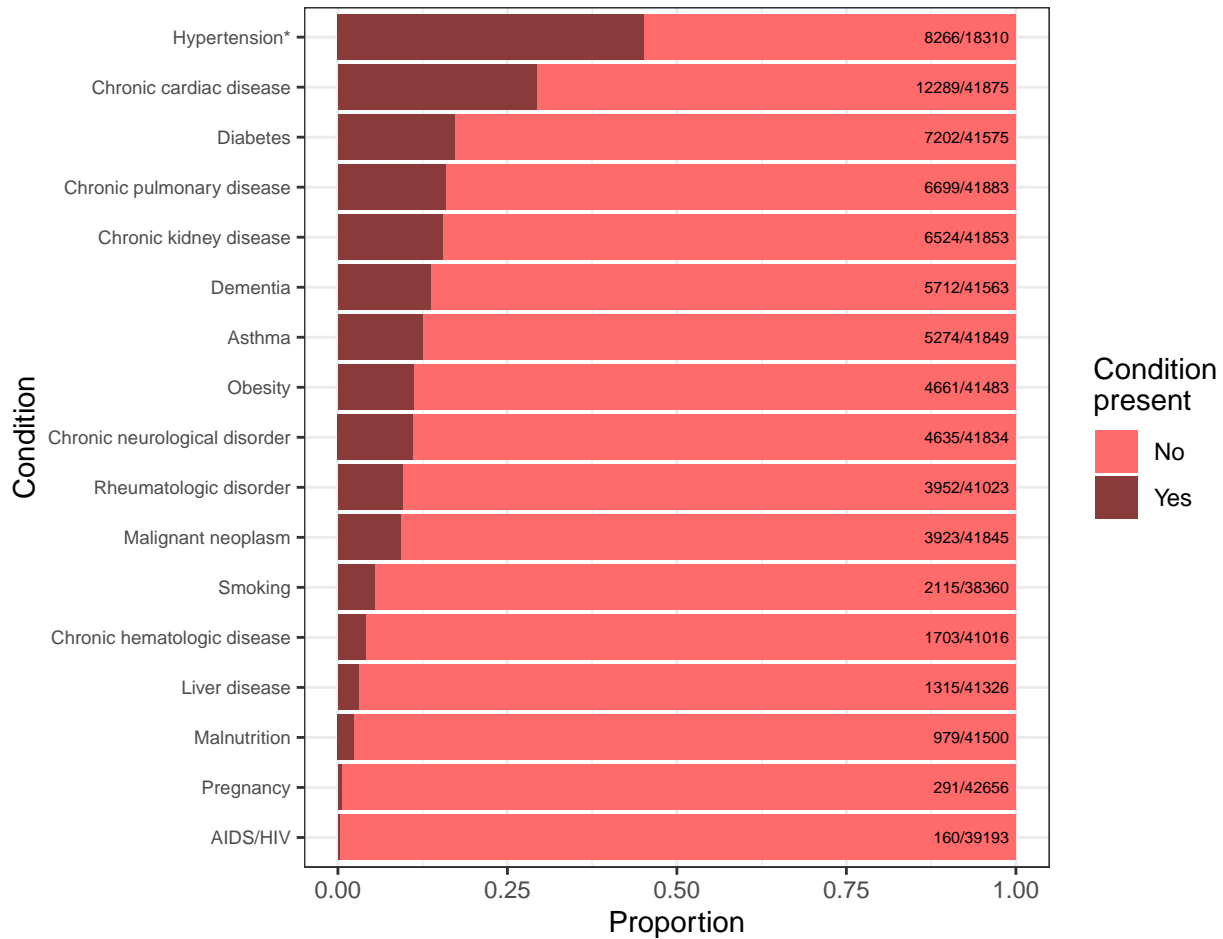


Figure 4: Top: Frequency of comorbidities or other concomitant conditions seen at admission amongst COVID-19 patients. Bars are annotated with a fraction representing the number of patients presenting with this comorbidity over the number of patients for whom presence or absence of this comorbidity was recorded. **Bottom:** The distribution of combinations of the four most common such conditions, amongst all patients for whom these data were recorded. Filled and empty circles below the x-axis indicate the presence or absence of each comorbidity. The “Any other” category contains all remaining conditions in the top plot, and any others recorded as free text by clinical staff. 14.3% of individuals had no comorbidities positively reported on admission. (As data was missing for one or more comorbidities for some patients, this should be regarded as an upper bound).



*Caution when interpreting this result as the sample size is small due to it being a new variable in the dataset.

Variables by age

Figure 5: Comorbidities stratified by age group. Boxes show the proportion of individuals with each comorbidity, with error bars showing 95% confidence intervals. The size of each box is proportional to the number of individuals represented. N is the number of individuals included in the plot (this varies between plots due to data completeness).

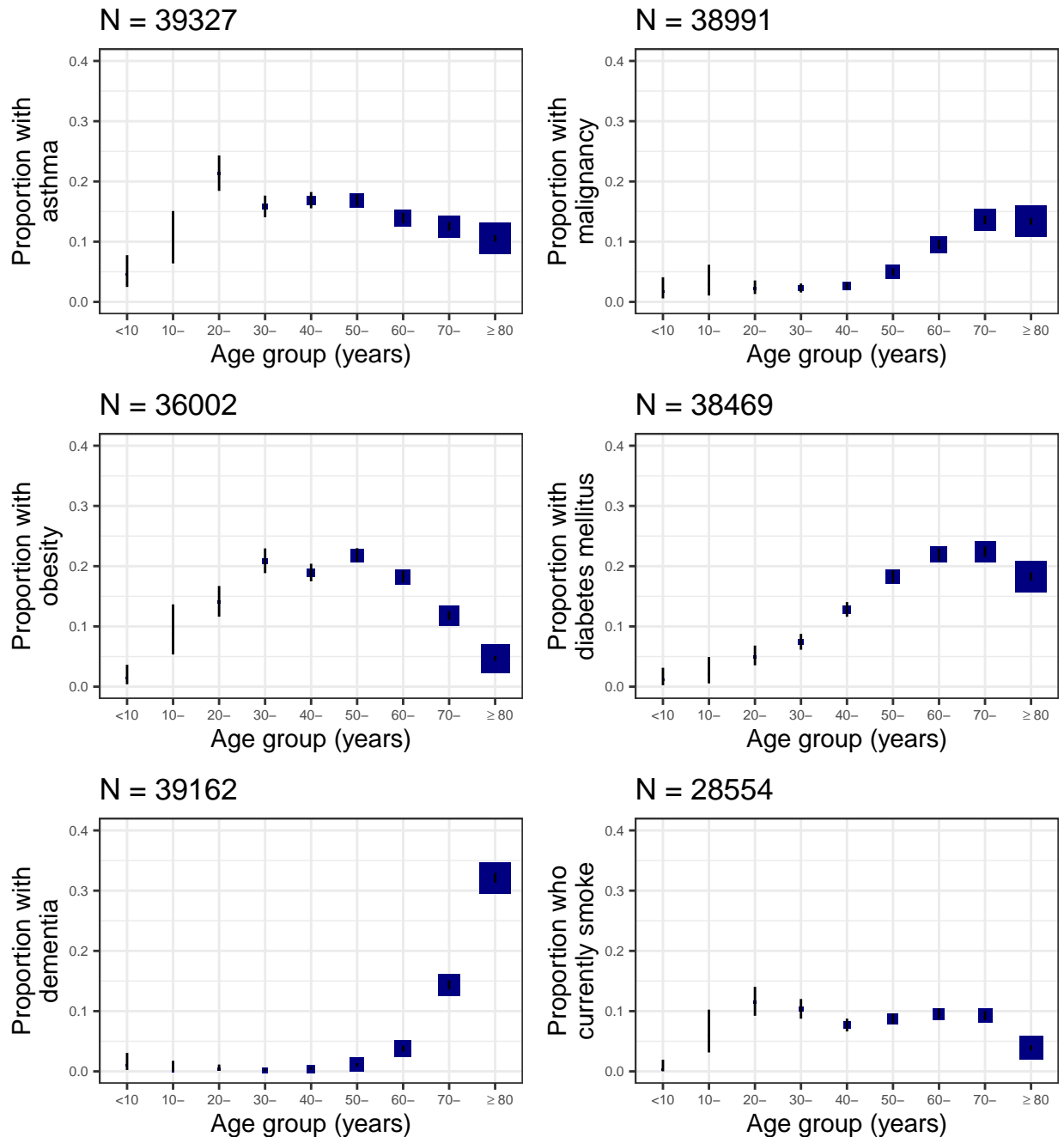
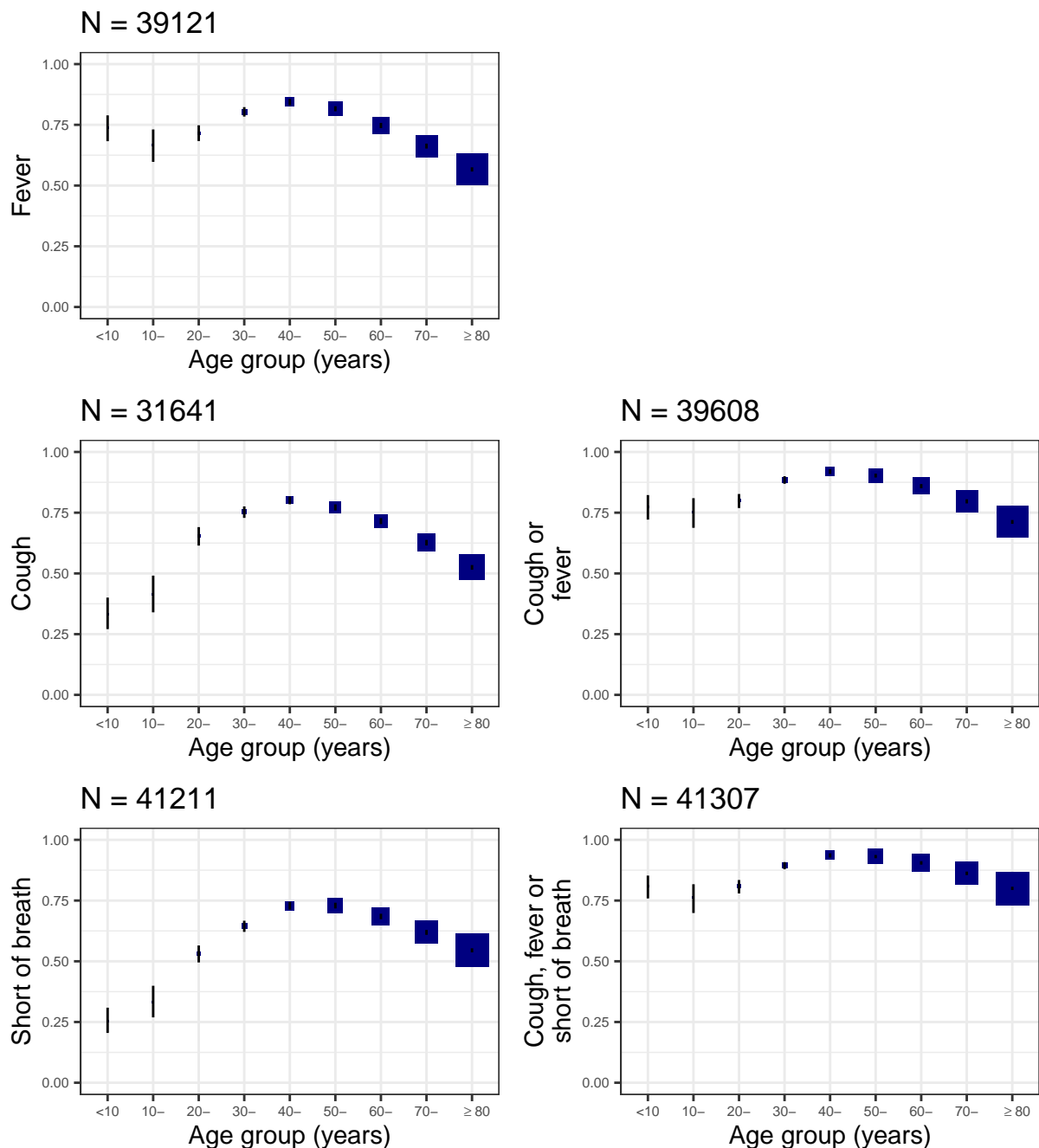


Figure 6: Symptoms recorded at hospital presentation stratified by age group. Boxes show the proportion of individuals with each symptom, with error bars showing 95% confidence intervals. The size of each box is proportional to the number of individuals represented. N is the number of individuals included in the plot (this varies between plots due to data completeness). **Top:** Left-hand column shows symptoms of fever, cough and shortness of breath, and right-hand column shows the proportions experiencing at least one of these symptoms. **Bottom:** The following symptoms are grouped: upper respiratory is any of runny nose, sore throat or ear pain; constitutional is any of myalgia, joint pain, fatigue or headache.



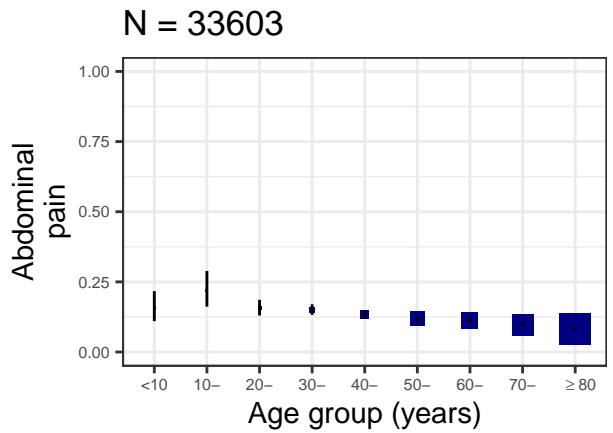
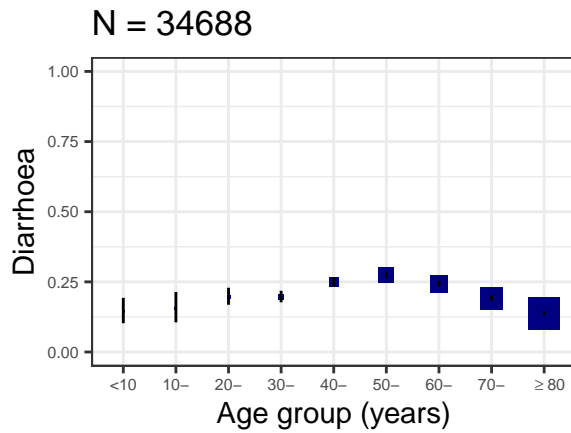
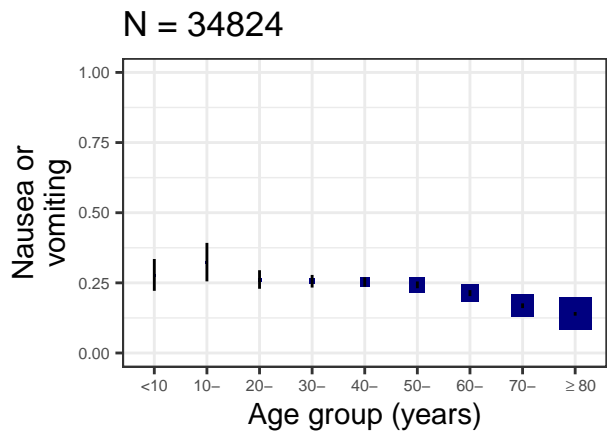
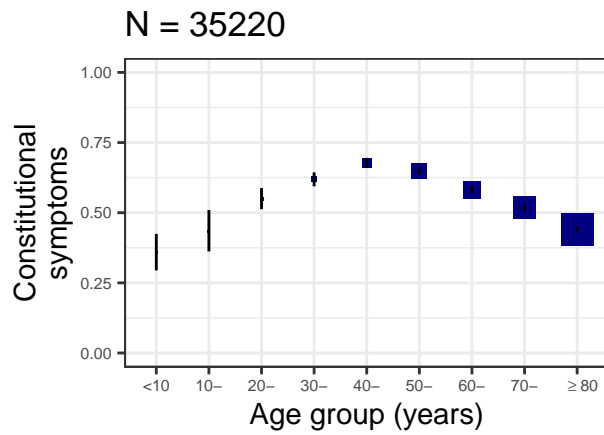
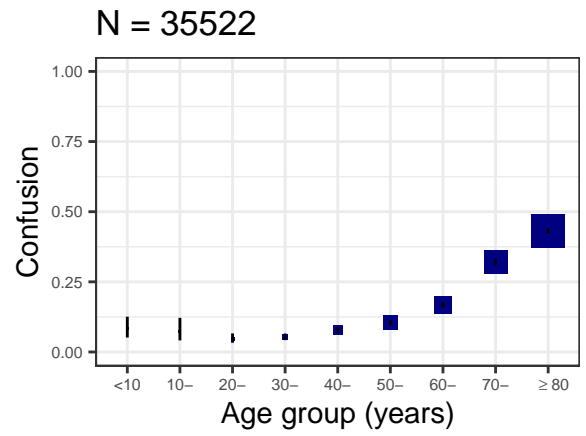
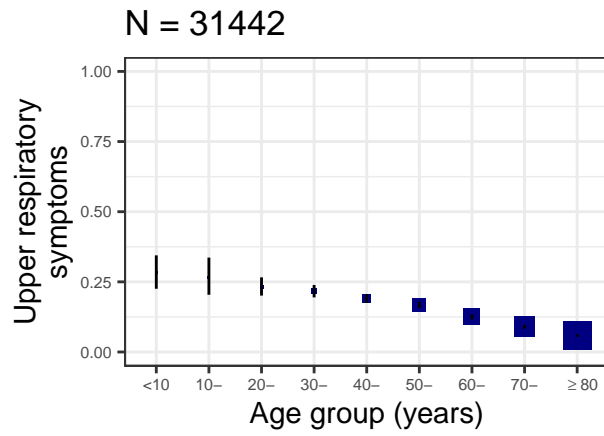


Figure 7: Box and whisker plots for observations at hospital presentation stratified by age group. Outliers are omitted. N is the number of individuals included in the plot (this varies between plots due to data completeness).

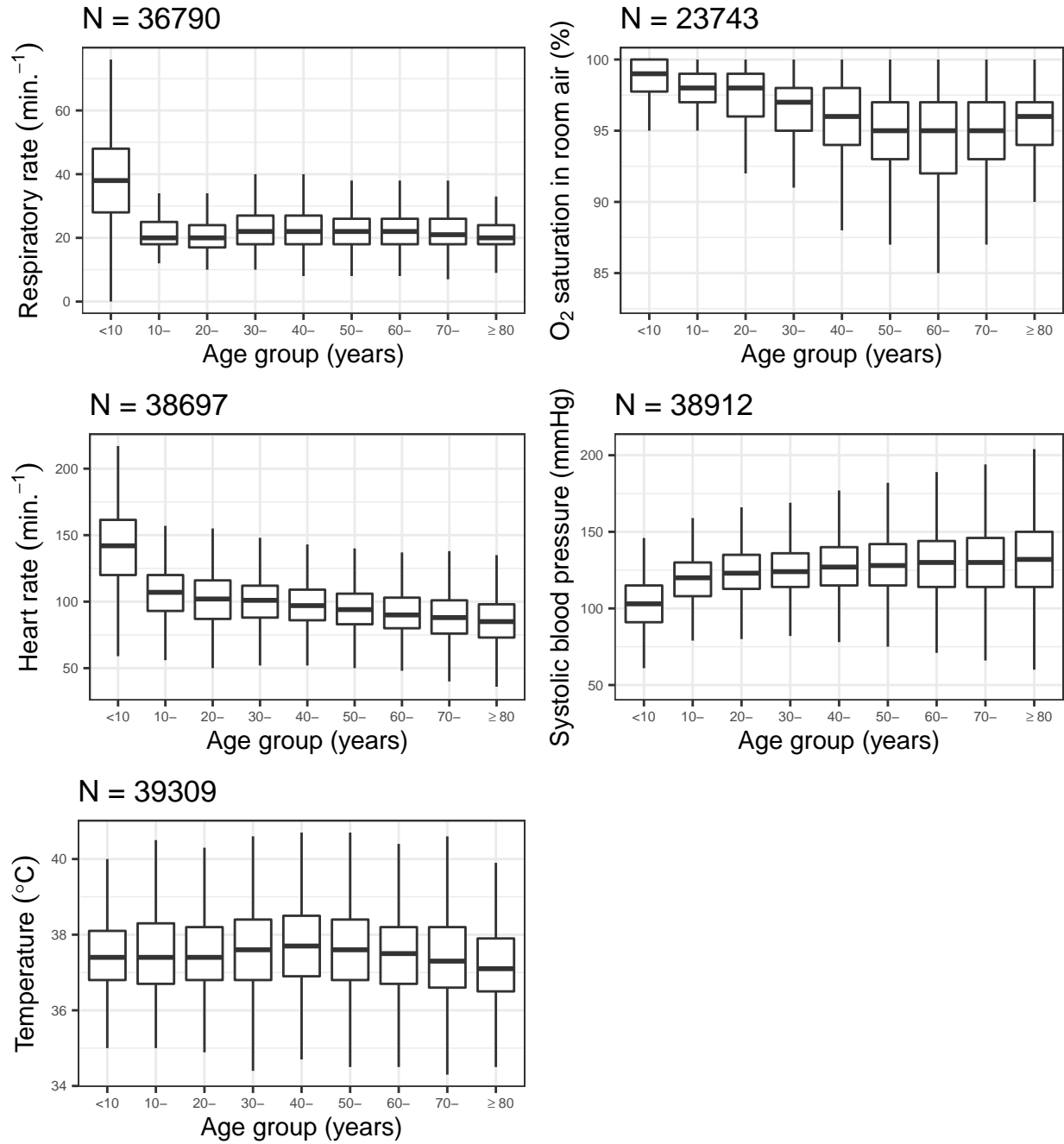
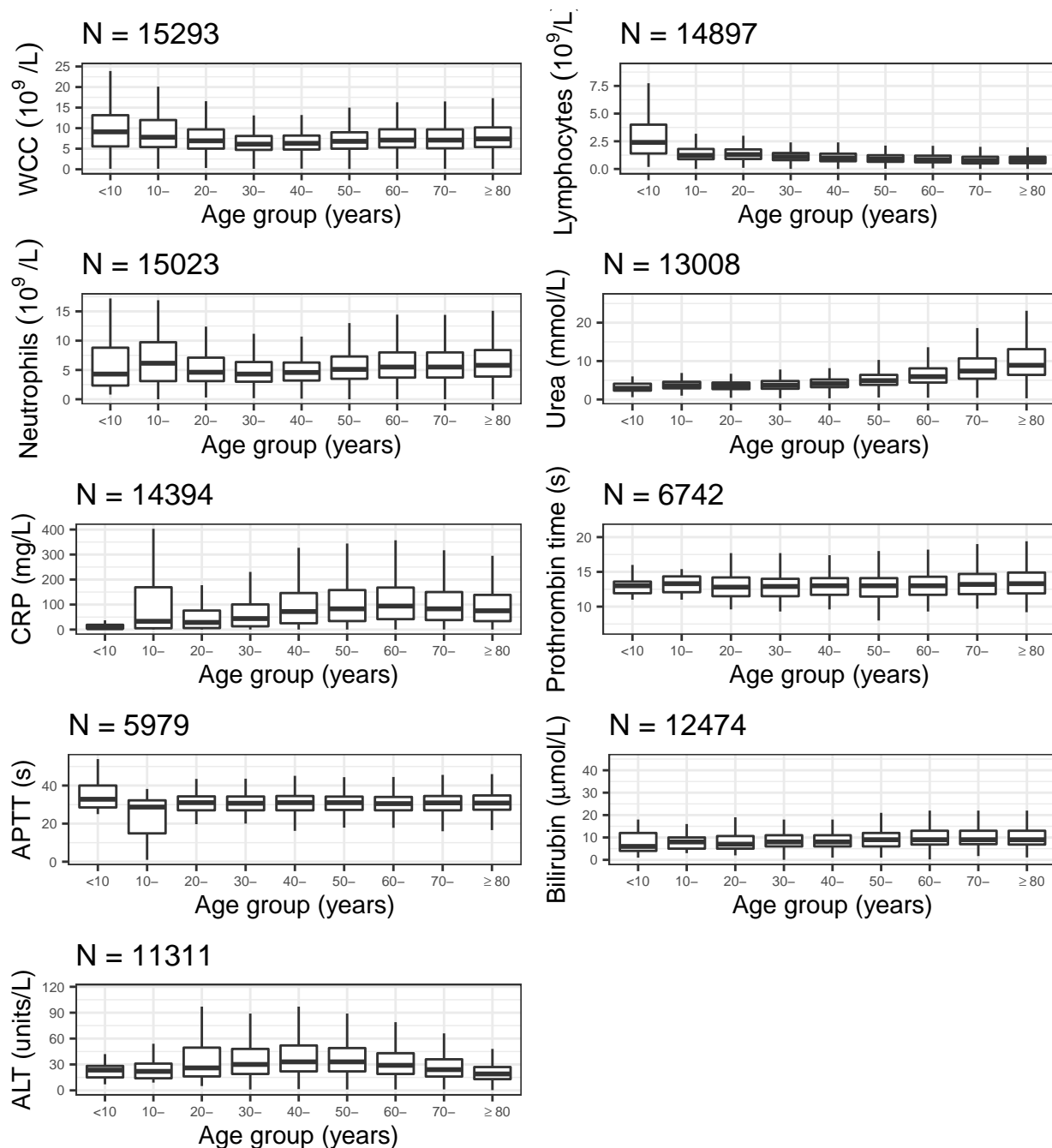


Figure 8: Box and whisker plots for laboratory results within 24 hours of hospital presentation stratified by age group. Outliers are omitted. N is the number of individuals included in the plot (this varies between plots due to data completeness). ALT, Alanine transaminase; APTT, Activated partial thromboplastin time; CRP, C-reactive protein; WCC, white cell count



Hospital stays and outcomes

Figure 9: Distribution of length of hospital stay, according to sex. This only includes cases with reported outcomes. The coloured areas indicate the kernel probability density of the observed data and the box plots show the median and interquartile range of the variable of interest. White dots are outliers.

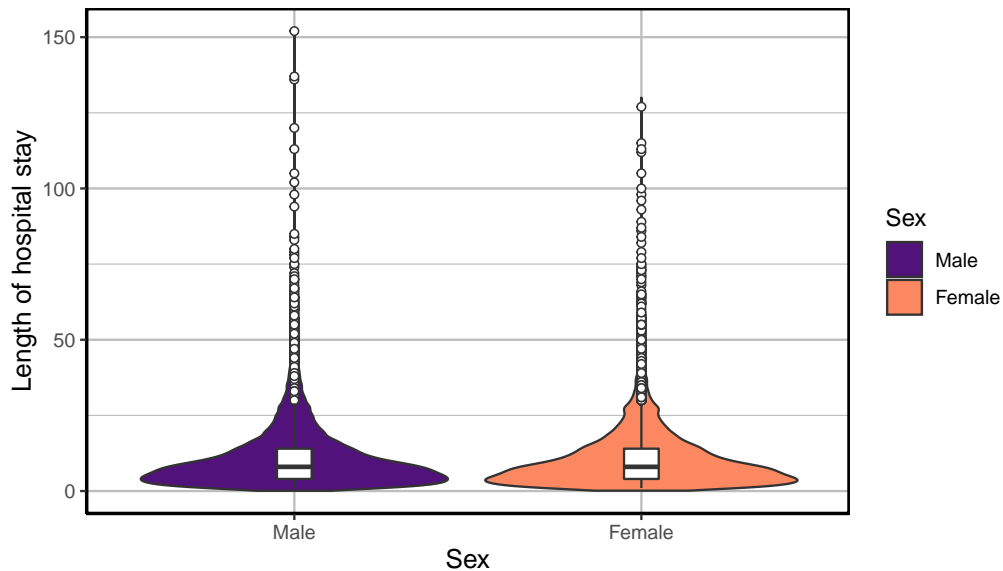


Figure 10: Distribution of length of hospital stay, according to patient age group. This only includes cases with reported outcomes. The coloured areas indicate the kernel probability density of the observed data and the box plots show the median and interquartile range of the variable of interest. White dots are outliers.

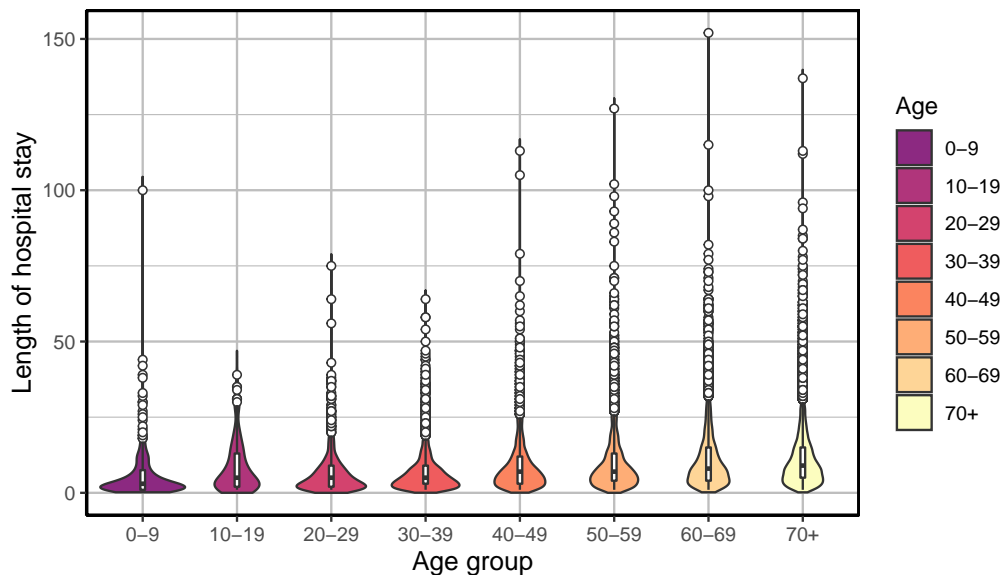


Figure 11: Distribution of time (in days) from hospital admission to ICU admission, for a total of 6787 patients.

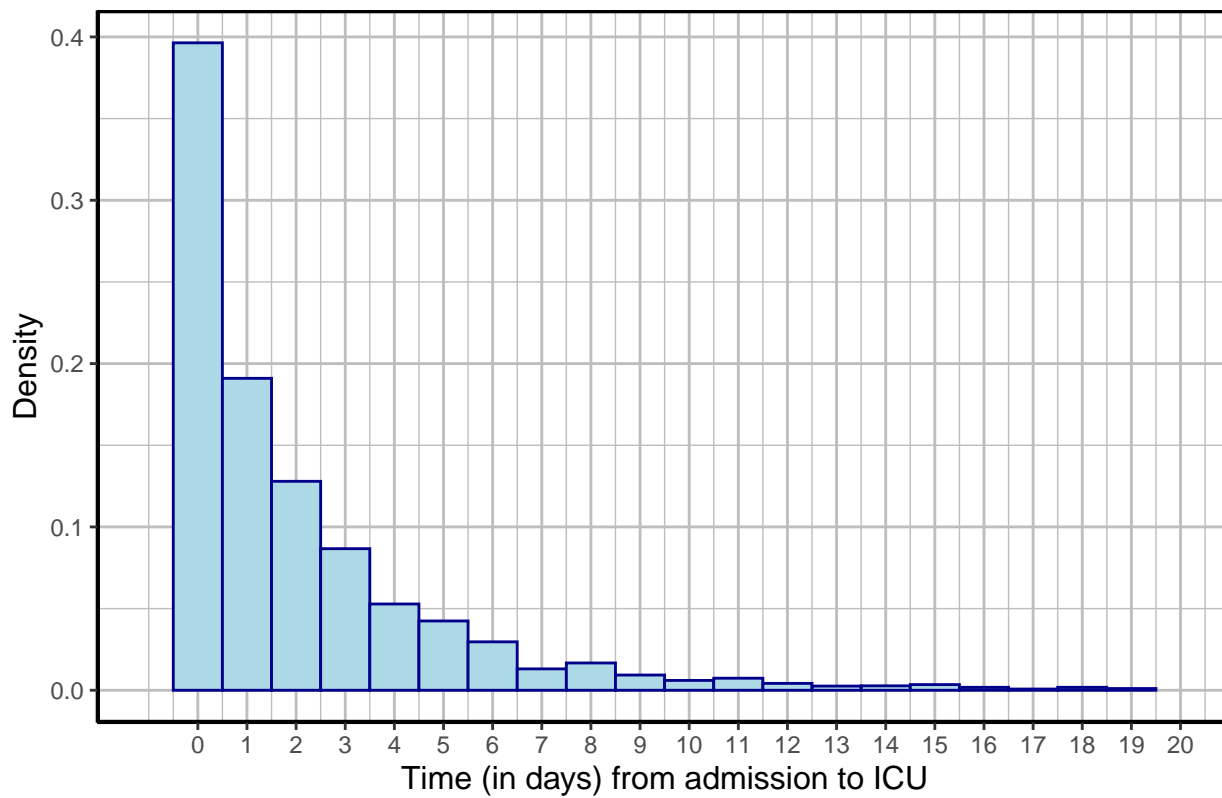


Figure 12: The distribution of patient status by number of days after admission. Patients with “unknown” status have left the site at the time of report but have unknown outcomes due to missing data. Patients still on site at the time of report appear in the “ongoing care” category for days which are in the future at that time. (For example, a patient admitted 7 days before the date of report and still on site by the date of the report would be categorised as “ongoing care” for days 8 and later.) The black line marks the end of 14 days; due to the cut-off, only a small number of patients appear in the “ongoing care” category left of this line.

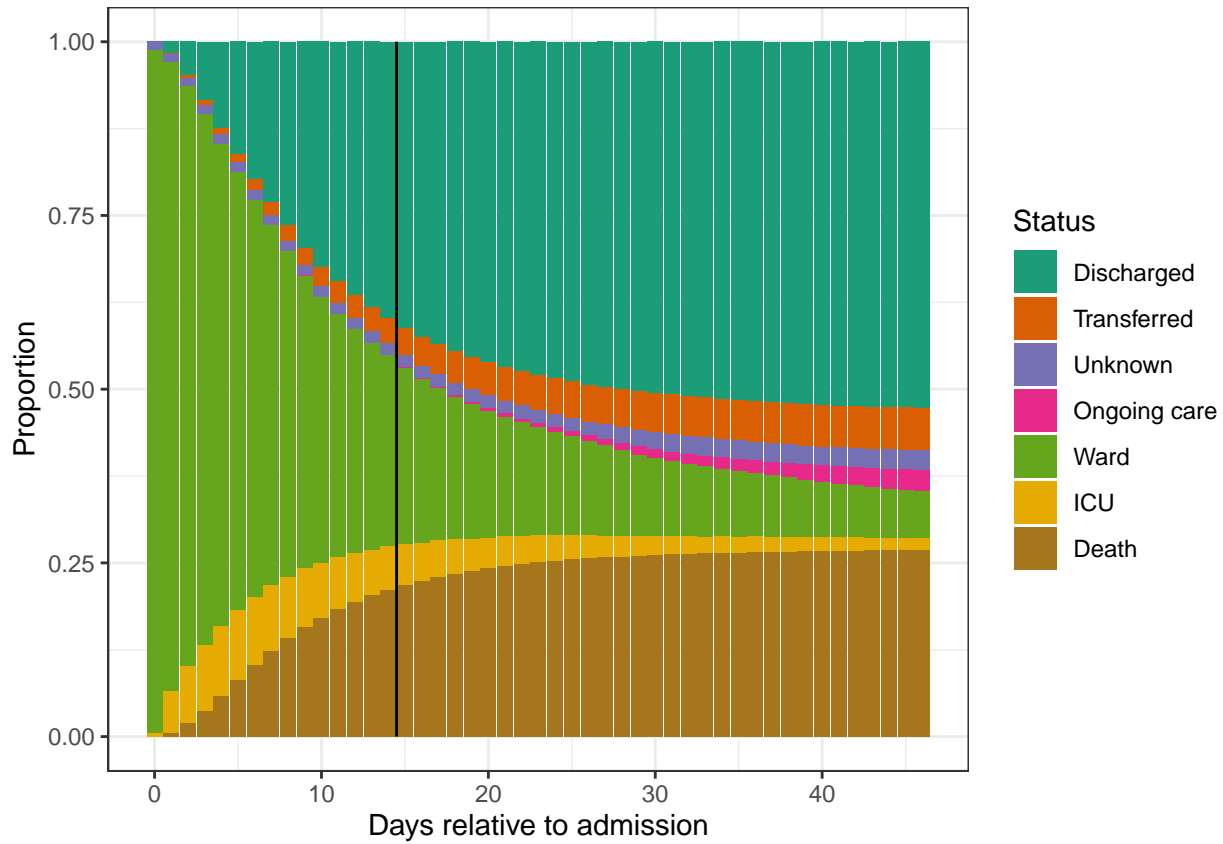
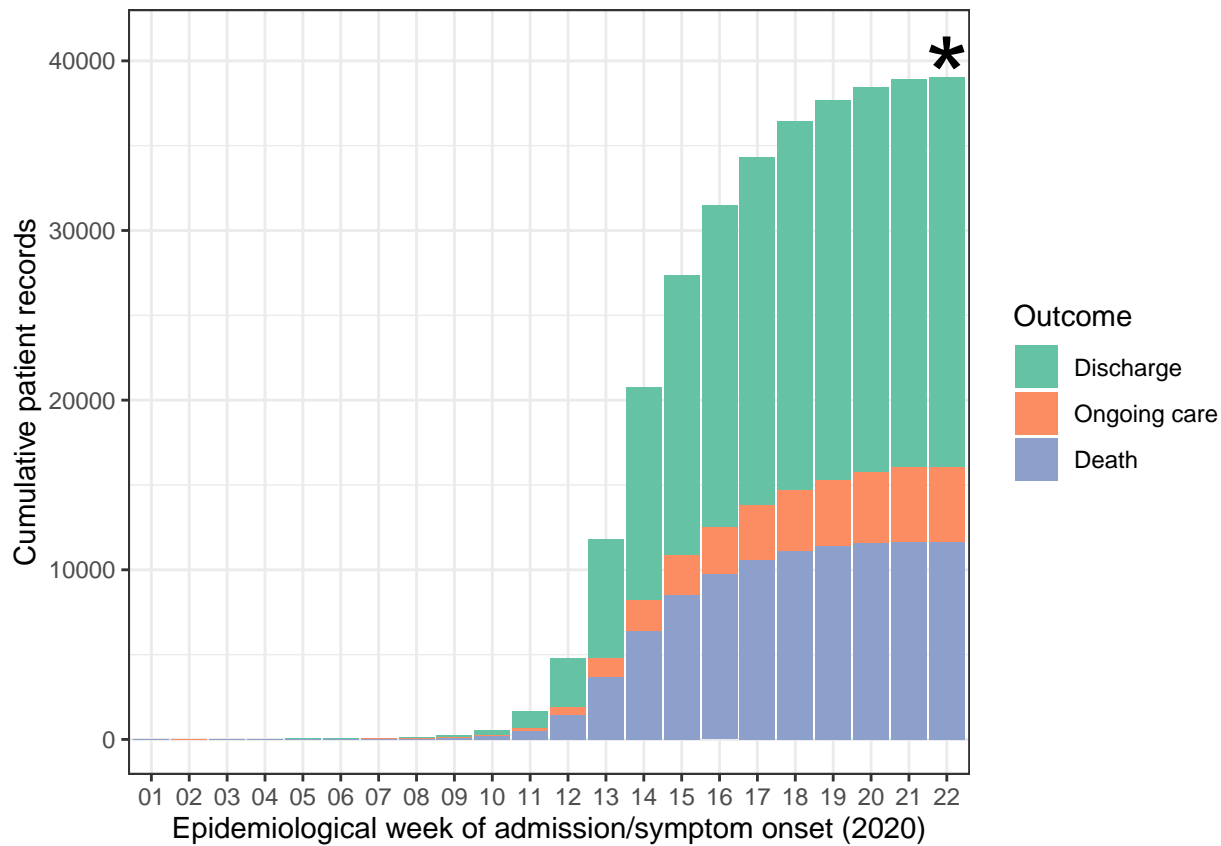
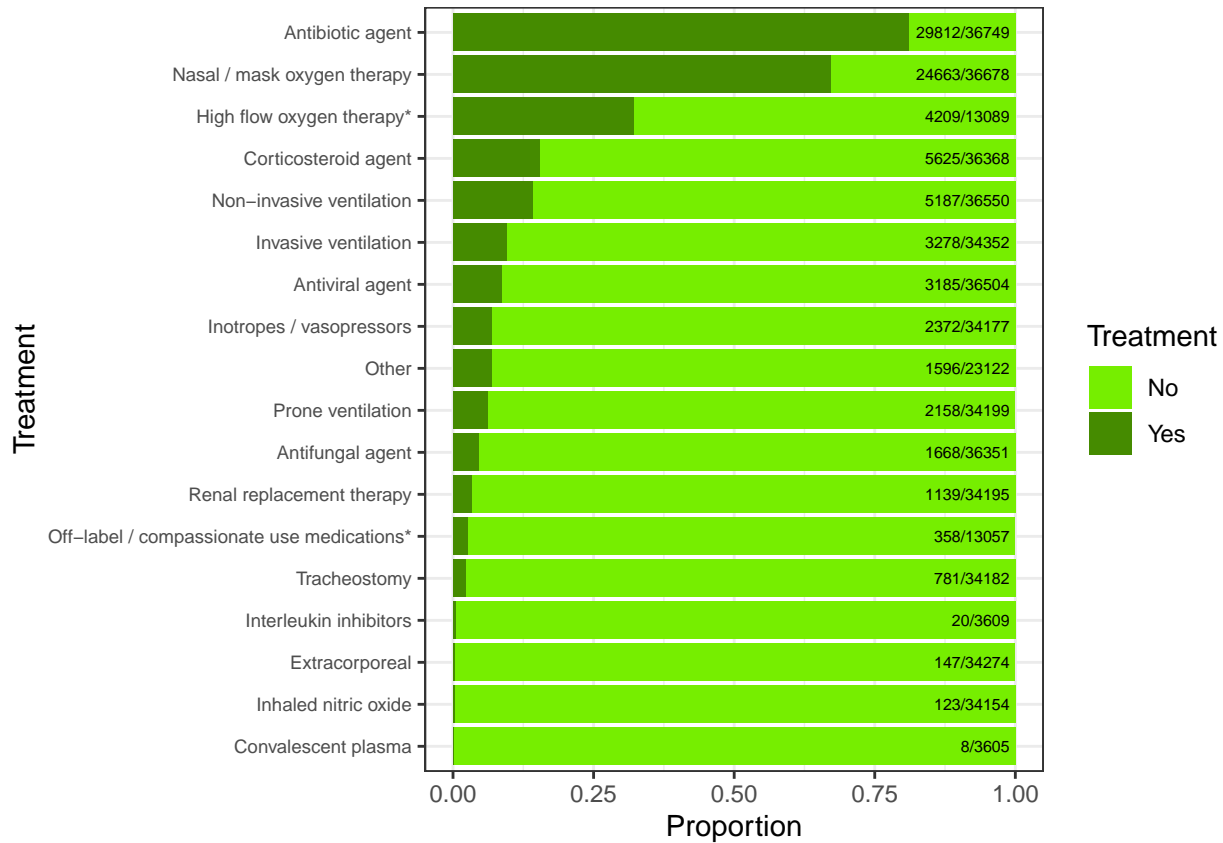


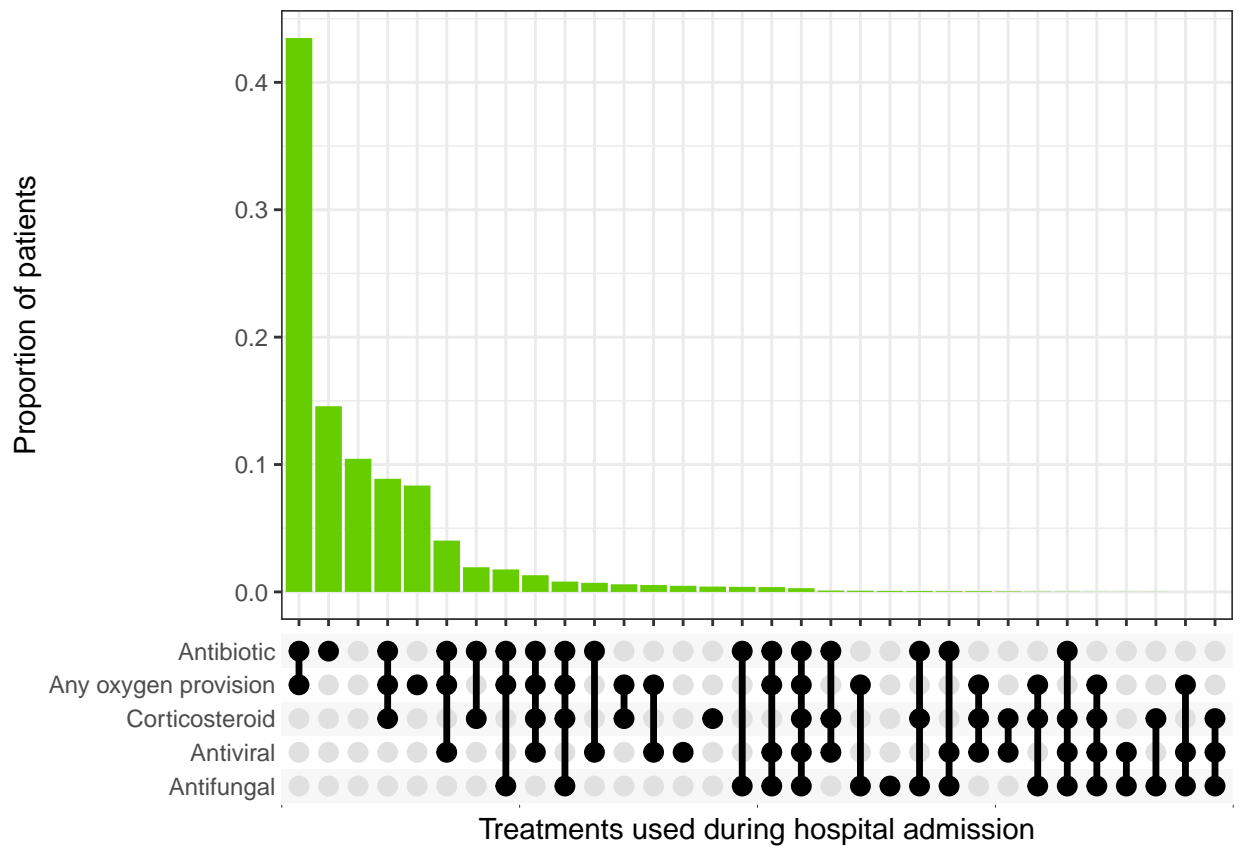
Figure 13: Cumulative patient numbers and outcomes by epidemiological week (of 2020) of admission (or, for patients infected in hospital, of symptom onset). The rightmost bar, marked with an asterisk, represents an incomplete week (due to the 14-day cutoff).



Treatment

Figure 14: Top: Treatments used. This only includes patients for whom this information was recorded. **Bottom:** The distribution of combinations of antimicrobial treatments and steroids administered during hospital stay, across all patients with completed hospital stay and recorded treatment data. Filled and empty circles below the x-axis indicate treatments that were and were not administered.

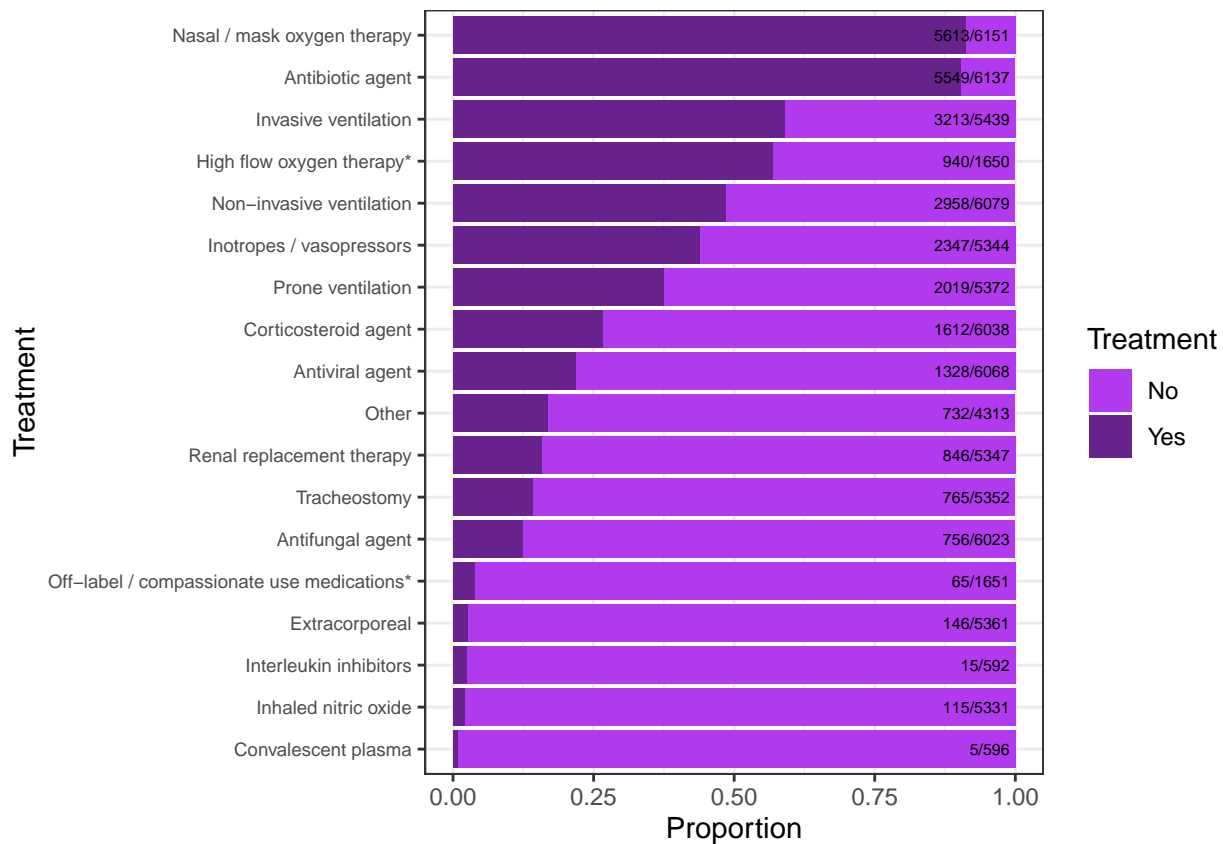


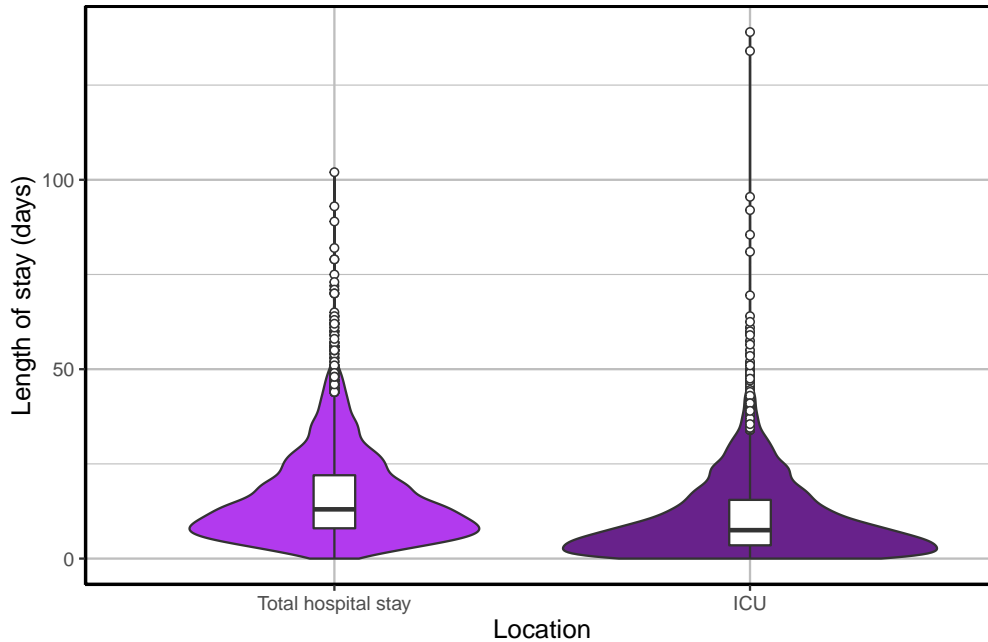
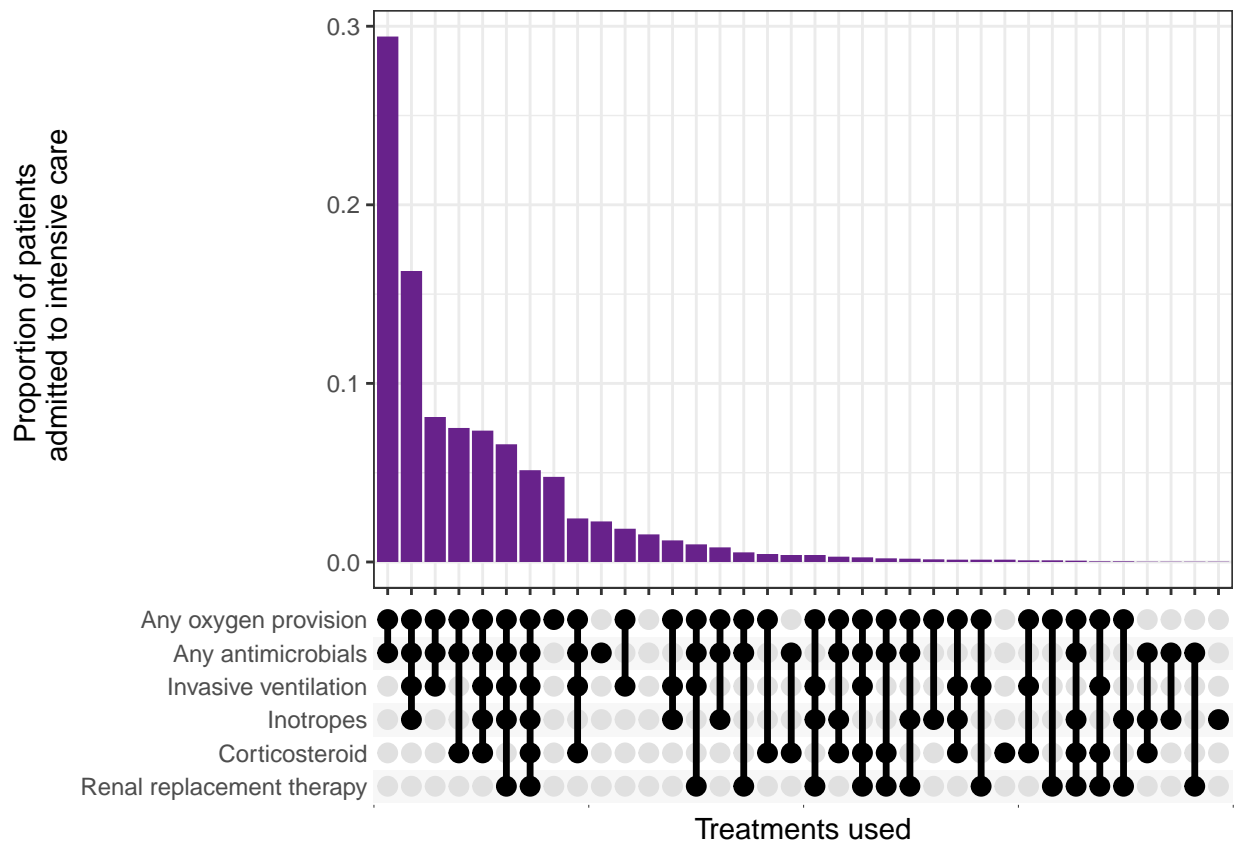


*Caution when interpreting this result as the sample size is small due to it being a new variable in the dataset.

Intensive Care and High Dependency Unit Treatments

Figure 15: **Top:** Treatments used amongst patients admitted to the ICU. This only includes patients for whom this information was recorded. **Middle:** The distribution of combinations of treatments administered during ICU/HDU stay. Filled and empty circles below the x-axis indicate treatments that were and were not administered respectively. **Bottom:** Distribution of lengths of stay for patients who were admitted to ICU/HDU: total length of stay for this group and length of stay within intensive care. This only includes cases with reported completed stays. The coloured areas indicate the kernel probability density of the observed data and the box plots show the median and interquartile range of the variable of interest.





*Caution when interpreting this result as the sample size is small due to it being a new variable in the dataset.

Statistical Analysis

Figure 16: Distribution of time from symptom onset to admission. The blue curve is the Gamma distribution fit to the data. The black dashed line indicates the position of the expected mean. The expected mean estimate here differs from the observed mean indicated in the summary text due to the differences in estimation: the mean shown in the figure below is the mean of the fitted Gamma distribution whereas the observed mean (in the summary text) is the arithmetic mean.

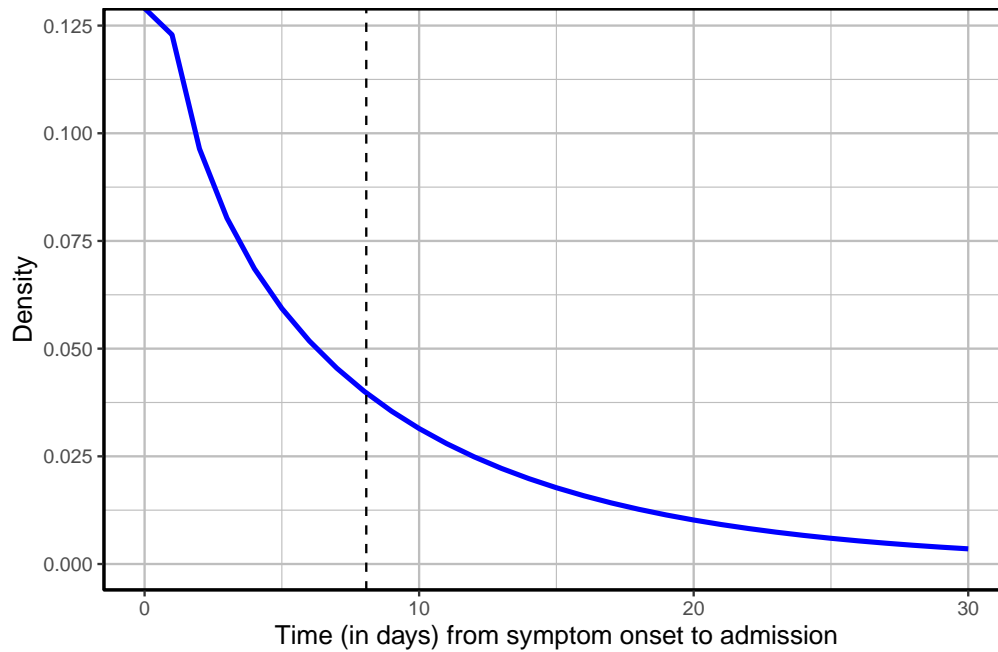


Figure 17: Distribution of time from admission to an outcome - either death or recovery (discharge). The blue curve is the Gamma distribution fit to the data. The black dashed line indicates the position of the expected mean. The expected mean differs from the observed mean in that it accounts for unobserved outcomes.

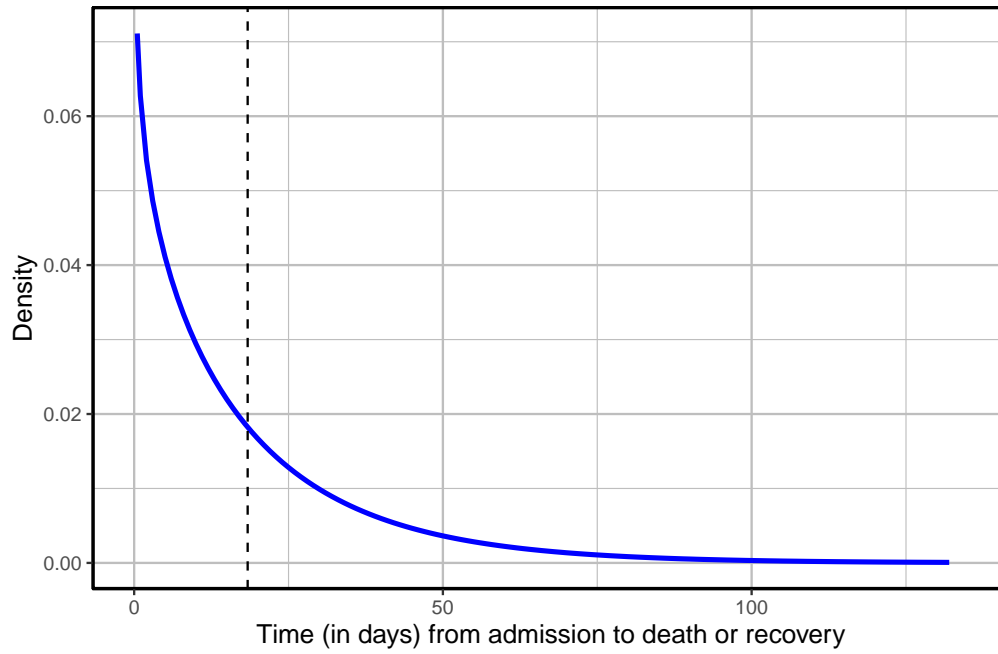
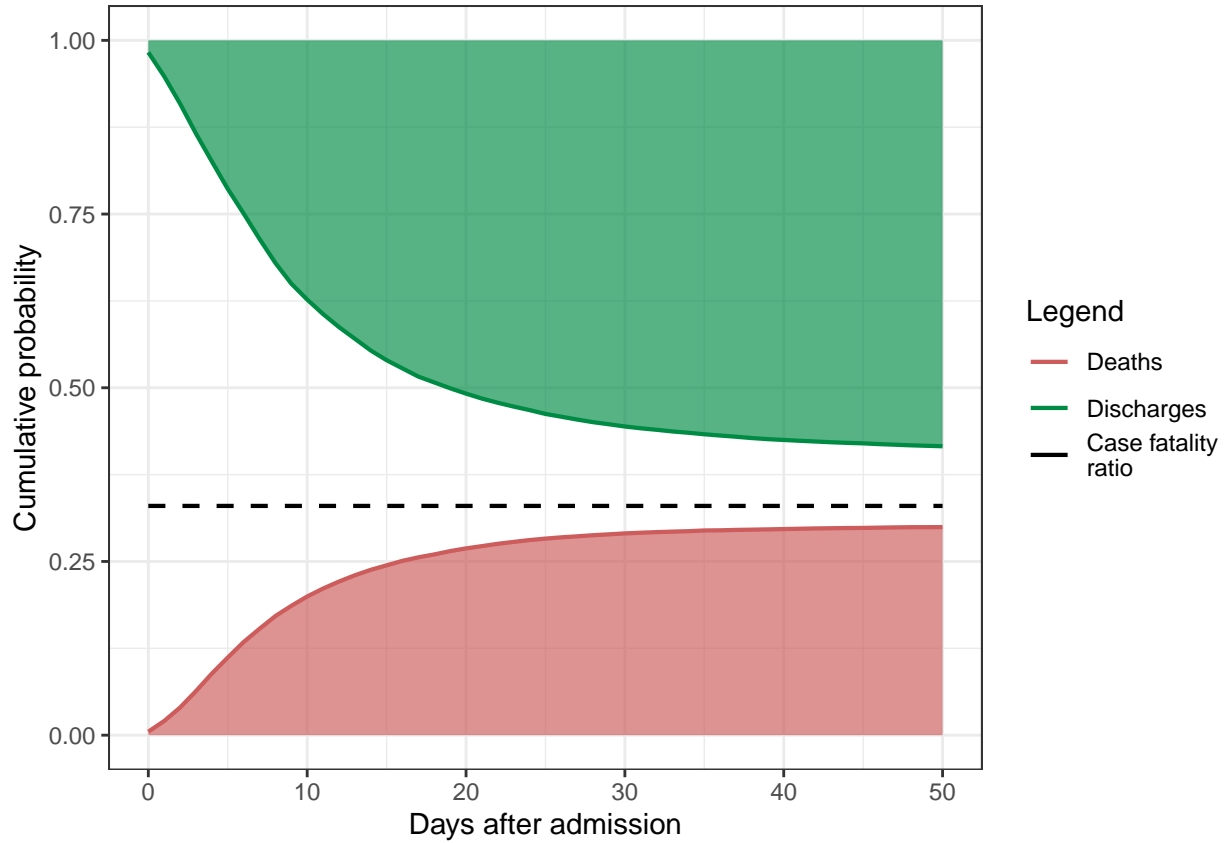


Figure 18: Probabilities of death (red curve) and recovery (green curve) over time. The black line indicates the case fatality ratio (CFR). The method used here considers all cases, irrespective of whether an outcome has been observed. For a completed epidemic, the curves for death and recovery meet. Estimates were derived using a nonparametric Kaplan-Meier-based method proposed by Ghani *et al.* (2005). The point estimate of the CFR is 0.33 (95% CI: 0.32-0.34).



Country Comparisons

Figure 19: Number of sites per country. This reflects all countries contributing data as at 08 June 2020.

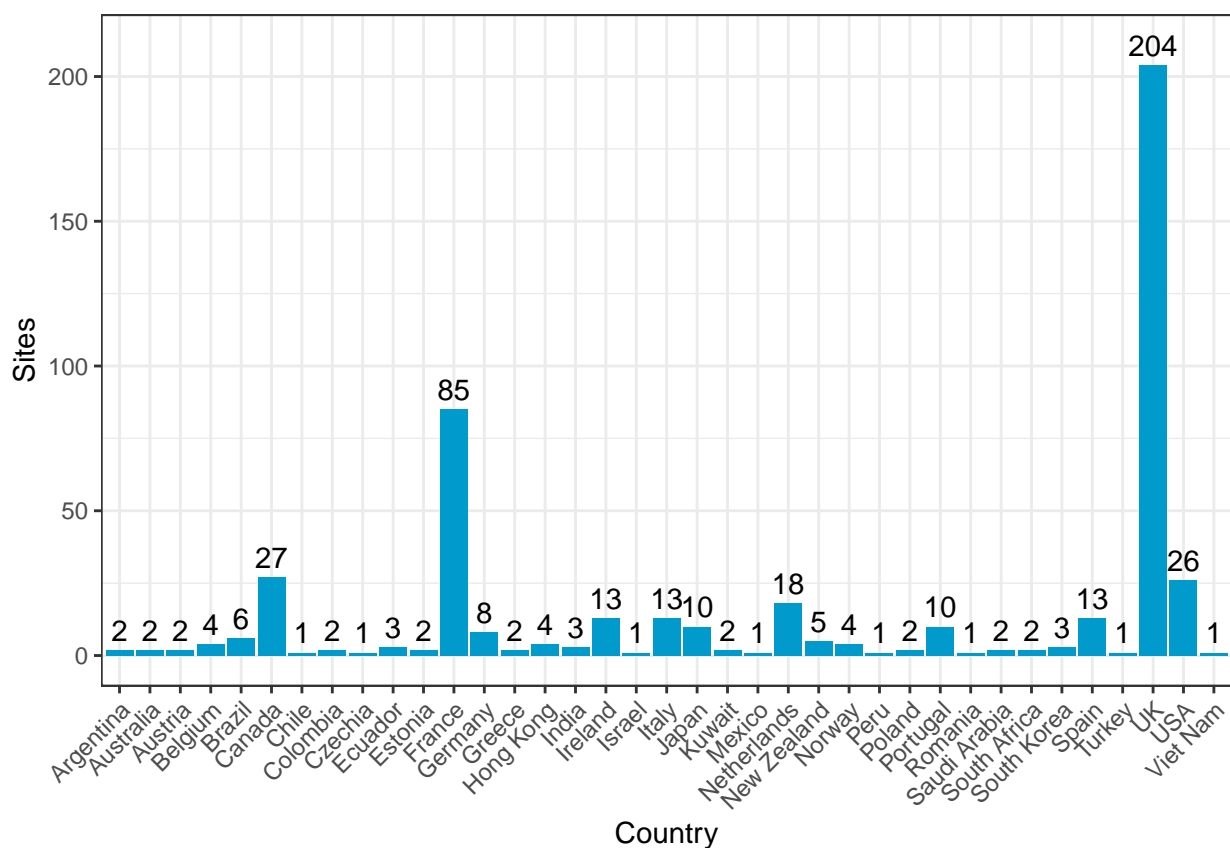
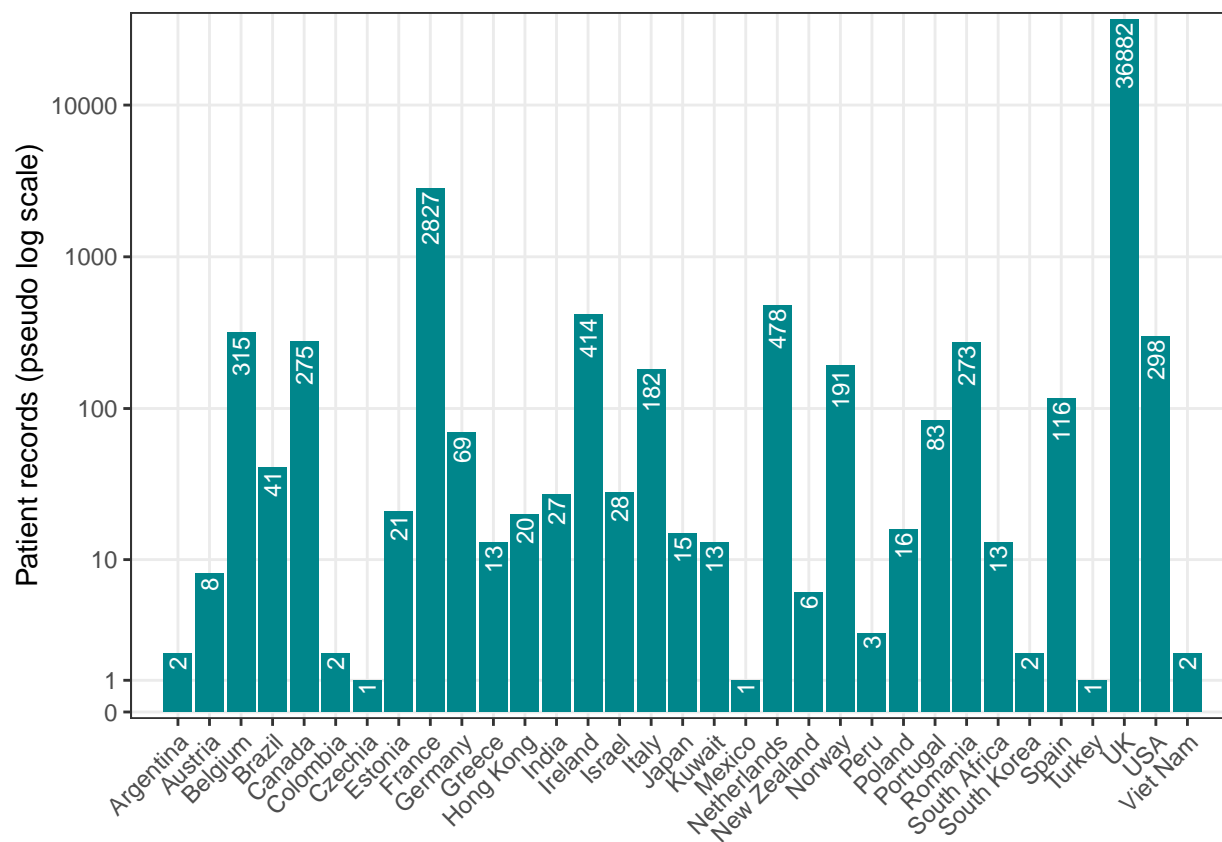


Figure 20: Distribution of patients by country. This reflects data on only those countries that are contributing data on patients who satisfy the inclusion criteria outlined in the summary section.



Background

In response to the emergence of novel coronavirus (COVID-19), ISARIC launched a portfolio of resources to accelerate outbreak research and response. These include data collection, analysis and presentation tools which are freely available to all sites which have requested access to these resources. All data collection tools are designed to address the most critical public health questions, have undergone extensive review by international clinical experts, and are free for all to use. Resources are available on the [ISARIC website](#).

The [ISARIC-WHO COVID-19 Case Record Form \(CRF\)](#) enables the collection of standardised clinical data to inform patient management and public health response. These forms should be used to collect data on suspected or confirmed cases of COVID-19. The CRF is available in multiple languages and is now in use across dozens of countries and research consortia, who are contributing data to these reports.

To support researchers to retain control of the data and samples they collect, ISARIC also hosts a data platform, where data can be entered to a web-based REDCap data management system, securely stored, and used to produce regular reports on their sites as above. Data contributors are invited to input on the methods and contents of the reports, and can also contribute to the aggregated data platform which aggregates site-specific data from all other sites across the world who are using this system. For more information, visit the ISARIC website.

All decisions regarding data use are made by the institutions that enter the data. ISARIC keeps contributors informed of any plans and welcomes their input to promote the best science and the interests of patients, institutions and public health authorities. Feedback and suggestions are welcome at ncov@isaric.org.

Methods

Patient details were submitted electronically by participating sites to the ISARIC database. Relevant background and presenting symptoms were recorded on the day of study recruitment. Daily follow-up was then completed until recovery or death. A final form was completed with details of treatments received and outcomes. All categories that represent fewer than five individuals have been suppressed to avoid the potential for identification of participants.

Graphs have been used to represent the age distribution of patients by sex and status (dead, recovered & still in hospital), the prevalence of individual symptoms on admission, comorbidities on admission, the length of hospital stay by sex and age group and the distribution of patient statuses by time since admission. In addition, the number of cases recruited by country and site, as well as the case count by status, has been represented.

Using a non-parametric Kaplan-Meier-based method (Ghani *et al.*, 2005), the case- fatality ratio (CFR) was estimated, as well as probabilities for death and recovery. This method estimates the CFR with the formula $a/(a + b)$, where a and b are the values of the cumulative incidence function for deaths and recoveries respectively, estimated at the last observed time point. In a competing risk context (i.e. where there are multiple endpoints), the cumulative incidence function for an endpoint is equal to the product of the hazard function for that endpoint and the survival function assuming a composite endpoint. It is worth noting that this method assumes that future deaths and recoveries will occur with the same relative probabilities as have been observed so far. Binomial confidence intervals for the CFR were obtained by a normal approximation (See Ghani *et al.*, (2005)).

To obtain estimates for the distributions of time from symptom onset to hospital admission and the time from admission to outcome (death or recovery), Gamma distributions were fitted to the observed data, accounting for unobserved outcomes. Parameters were estimated by a maximum likelihood procedure and confidence intervals for the means and variances were obtained by bootstrap.

All analysis were performed using the R statistical software (R Core Team, 2019).

Caveats

Patient data are collected and uploaded from start of admission, however a complete patient data set is not available until the episode of care is complete. This causes a predictable lag in available data influenced by the duration of admission which is greatest for the sickest patients, and accentuated during the up-phase of the outbreak.

These reports provide regular outputs from the ISARIC COVID-19 database. We urge caution in interpreting unexpected results. We have noted some unexpected results in the report, and are working with sites that submitted data to gain a greater understanding of these.

Summary Tables

Proportions are presented in parentheses. Proportions have been rounded to two decimal places.

Table 1: Patient Characteristics

Description	Value
Size of cohort	42656
By sex	
Male	24691 (0.58)
Female	17851 (0.42)
Unknown	114 (0)
By outcome status	
Dead	11659 (0.27)
Recovered (discharged alive)	22949 (0.54)
Still in hospital	4411 (0.1)
Transferred to another facility	2770 (0.06)
Unknown	867 (0.02)
By age group	
0-9	286 (0.01)
10-19	216 (0.01)
20-29	825 (0.02)
30-39	1744 (0.04)
40-49	3176 (0.07)
50-59	5723 (0.13)
60-69	6878 (0.16)
70+	23280 (0.55)
Unknown	528 (0.01)
Admitted to ICU/HDU?	
Yes	7374 (17)
No/Unknown	35282 (83)

Table 2: Outcome by age and sex.

Variable	Still in hospital	Death	Discharge	Transferred	Unknown
Age					
0-9	17 (0)	4 (0)	250 (0.01)	11 (0)	4 (0)
10-19	18 (0)	6 (0)	175 (0.01)	10 (0)	7 (0.01)
20-29	97 (0.02)	21 (0)	672 (0.03)	18 (0.01)	17 (0.02)
30-39	188 (0.04)	65 (0.01)	1399 (0.06)	60 (0.02)	32 (0.04)
40-49	345 (0.08)	193 (0.02)	2449 (0.11)	140 (0.05)	49 (0.06)
50-59	630 (0.14)	713 (0.06)	4013 (0.17)	244 (0.09)	123 (0.14)
60-69	841 (0.19)	1457 (0.12)	4016 (0.17)	411 (0.15)	153 (0.18)
70+	2195 (0.5)	9080 (0.78)	9690 (0.42)	1853 (0.67)	462 (0.53)
Sex					
Male	2621 (0.59)	7302 (0.63)	12724 (0.55)	1551 (0.56)	493 (0.57)
Female	1774 (0.4)	4322 (0.37)	10167 (0.44)	1217 (0.44)	371 (0.43)
Unknown	4 (0)	21 (0)	41 (0)	2 (0)	2 (0)

Table 3: Prevalence of Symptoms

Symptoms	Present	Absent	Unknown
History of fever	27302 (0.64)	12311 (0.29)	3043 (0.07)
Shortness of breath	26059 (0.61)	15667 (0.37)	930 (0.02)
Cough	20661 (0.48)	11353 (0.27)	10642 (0.25)
Fatigue / Malaise	15640 (0.37)	17659 (0.41)	9357 (0.22)
Altered consciousness / confusion	9537 (0.22)	26425 (0.62)	6694 (0.16)
Diarrhoea	7028 (0.16)	28099 (0.66)	7529 (0.18)
Vomiting / Nausea	6723 (0.16)	28537 (0.67)	7396 (0.17)
Muscle aches	6566 (0.15)	24659 (0.58)	11431 (0.27)
Chest pain	4680 (0.11)	29328 (0.69)	8648 (0.2)
Headache	4068 (0.1)	27067 (0.63)	11521 (0.27)
Abdominal pain	3573 (0.08)	30436 (0.71)	8647 (0.2)
Wheezing	2851 (0.07)	29486 (0.69)	10319 (0.24)
Sore throat	2792 (0.07)	27742 (0.65)	12122 (0.28)
Joint pain	2278 (0.05)	27722 (0.65)	12656 (0.3)
Runny nose	1214 (0.03)	28798 (0.68)	12644 (0.3)
Disturbance or loss of taste	881 (0.02)	10700 (0.25)	31075 (0.73)
Skin ulcers	741 (0.02)	31016 (0.73)	10899 (0.26)
Disturbance or loss of smell	609 (0.01)	11328 (0.27)	30719 (0.72)
Seizures	508 (0.01)	33611 (0.79)	8537 (0.2)
Bleeding	492 (0.01)	33238 (0.78)	8926 (0.21)
Skin rash	482 (0.01)	31824 (0.75)	10350 (0.24)
Lymphadenopathy	196 (0)	31560 (0.74)	10900 (0.26)

Table 4: Prevalence of Comorbidities

Comorbidities	Present	Absent	Unknown
Chronic cardiac disease	12289 (0.29)	27795 (0.65)	2572 (0.06)
Hypertension	8266 (0.19)	9287 (0.22)	25103 (0.59)
Diabetes	7202 (0.17)	31722 (0.74)	3732 (0.09)
Chronic pulmonary disease	6699 (0.16)	33244 (0.78)	2713 (0.06)
Chronic kidney disease	6524 (0.15)	33235 (0.78)	2897 (0.07)
Dementia	5712 (0.13)	33652 (0.79)	3292 (0.08)
Asthma	5274 (0.12)	34504 (0.81)	2878 (0.07)
Obesity	4661 (0.11)	31523 (0.74)	6472 (0.15)
Chronic neurological disorder	4635 (0.11)	34905 (0.82)	3116 (0.07)
Rheumatologic disorder	3952 (0.09)	34625 (0.81)	4079 (0.1)
Malignant neoplasm	3923 (0.09)	35514 (0.83)	3219 (0.08)
Smoking	2115 (0.05)	17547 (0.41)	22994 (0.54)
Chronic hematologic disease	1703 (0.04)	36931 (0.87)	4022 (0.09)
Liver disease	1315 (0.03)	37509 (0.88)	3832 (0.09)
Malnutrition	979 (0.02)	36327 (0.85)	5350 (0.13)
Pregnancy	291 (0.01)	41603 (0.98)	762 (0.02)

Table 5: Prevalence of Treatments

The counts presented for treatments include all cases, not only cases with complete details of treatments (as expressed in the summary).

Treatments	Present	Absent	Unknown
Antibiotic agent	29812 (0.7)	6102 (0.14)	6742 (0.16)
Oxygen therapy	27697 (0.65)	13490 (0.32)	1469 (0.03)
Nasal / mask oxygen therapy	24663 (0.58)	10946 (0.26)	7047 (0.17)
Non-invasive ventilation	6483 (0.15)	34589 (0.81)	1584 (0.04)
Corticosteroid agent	5625 (0.13)	29182 (0.68)	7849 (0.18)
High flow oxygen therapy	4209 (0.1)	8158 (0.19)	30289 (0.71)
Invasive ventilation	4092 (0.1)	34679 (0.81)	3885 (0.09)
Antiviral agent	3185 (0.07)	31908 (0.75)	7563 (0.18)
Inotropes / vasopressors	2372 (0.06)	30039 (0.7)	10245 (0.24)
Prone ventilation	2158 (0.05)	30170 (0.71)	10328 (0.24)
Antifungal agent	1668 (0.04)	33174 (0.78)	7814 (0.18)
Other	1596 (0.04)	19708 (0.46)	21352 (0.5)
Renal replacement therapy	1139 (0.03)	31373 (0.74)	10144 (0.24)
Tracheostomy	781 (0.02)	31668 (0.74)	10207 (0.24)

Table 6: Key time variables.

Unlike the observed mean, the estimation process of the **expected mean** accounts for all cases, irrespective of whether an outcome has been observed. The expected mean is ‘NA’ for those variables for which parameter estimation could not be performed, due to the high proportion of unobserved end dates. The interquartile range is abbreviated ‘IQR’.

Time (in days)	Mean (observed)	SD (observed)	Median (observed)	IQR (observed)	Expected mean (95% CI)
Length of hospital stay	11.5	12.1	8	10	18.4 (17.7, 20.4)
Symptom onset to admission	14.6	8.1	5	9	8.1 (7.7, 8.8)
Admission to ICU entry	2.8	6.1	1	3	4.6 (4.3, 5.1)
Duration of ICU	10.8	10.4	7.5	13	NA
Admission to IMV	3.6	7	2	5	4.2 (4, 4.6)
Duration of IMV	12.6	9.7	10	12	NA
Admission to NIV	4.2	8.8	2	5	4.7 (4.4, 5.2)
Duration of NIV	2.2	3.9	0	5	NA

Acknowledgements

This report is made possible through the efforts and expertise of the staff collecting data at our partner institutions across the globe, and the ISARIC Team. For a list of partners and team members, please visit <https://isaric.tghn.org/covid-19-data-management-hosting-contributors/>.

References

1. A. C. Ghani, C. A. Donnelly, D. R. Cox, J. T. Griffin, C. Fraser, T. H. Lam, L. M. Ho, W. S. Chan, R. M. Anderson, A. J. Hedley, G. M. Leung (2005). Methods for Estimating the Case Fatality Ratio for a Novel, Emerging Infectious Disease, *American Journal of Epidemiology*, 162(5), 479 - 486. [doi:10.1093/aje/kwi230](https://doi.org/10.1093/aje/kwi230).
2. Docherty, A. B., Harrison, E. M., Green, C. A., Hardwick, H. E., Pius, R., Norman, L. *et al.* (2020). Features of 20 133 UK patients in hospital with COVID-19 using the ISARIC WHO Clinical Characterisation Protocol: prospective observational cohort study. *BMJ*, 369:m1985.
3. R Core Team (2019). R: A language and environment for statistical computing. R Foundation for Statistical Computing, Vienna, Austria.