

## **What factors influence symptom reporting during an emerging infectious disease outbreak? A rapid review of the evidence**

Patrice Carter PhD,<sup>1</sup> Odette Megnin-Viggars PhD,<sup>1</sup> G James Rubin PhD<sup>2</sup>

<sup>1</sup> Centre for Outcomes Research and Effectiveness, Research Department of Clinical, Educational & Health Psychology, University College London, 1-19 Torrington Place, London, UK

<sup>2</sup> Department of Psychological Medicine, Institute of Psychiatry, Psychology & Neuroscience, King's College London, UK

Corresponding author: Patrice Carter, Centre for Outcomes Research and Effectiveness, Research Department of Clinical, Educational & Health Psychology, University College London, 1-19 Torrington Place, London, UK. [Patrice.carter@ucl.ac.uk](mailto:Patrice.carter@ucl.ac.uk); 07841 707 994

### **Abstract**

**Introduction:** During any emerging infectious disease outbreak, people with symptoms of the illness are often asked to report their symptoms to the health service in a timely manner, to facilitate contact tracing. Numerous factors may influence an individual's willingness to report these symptoms. Understanding these factors has become urgent during the COVID-19 pandemic.

**Objective:** To determine which factors influence symptom reporting during an emerging infectious disease outbreak.

**Methods:** We conducted a rapid review of the evidence. We included papers based on primary research; published in a peer-reviewed journal; written in English; included factors associated with symptom reporting or accessing healthcare; and related to a major public health incident involving an infectious disease outbreak.

**Main results:** Five themes were identified as facilitators of symptom reporting or accessing healthcare: accurate and informative communication; symptom severity; concern about exposure;

ease of access; and relationship with the healthcare provider. Seven themes were identified as barriers of symptom reporting or accessing healthcare: lack of knowledge; fear; stigmatization; invasion of privacy; low concern about symptoms; economics; and practicalities of attending a healthcare facility.

**Discussion & Conclusion:** If contact tracing services are to be effective, members of the public need to have the capability, opportunity and motivation to use them. The themes identified should be used to evaluate the information provided to the public about such a service, the routes of access, and the underlying policies relating to the service, in order to ensure that as many people as possible with relevant symptoms will make contact.

**Conflicts of interest:** PC, OMV and GJR have nothing to declare

**Source of funding:** PC and OMV were funded by Go-Science; the review was conducted at the request of the Scientific Pandemic Influenza Group on Behaviours (SPI-B), a behavioural science advisory group for the Scientific Advisory Group for Emergencies (SAGE): Coronavirus (COVID-19) response team, who provide scientific and technical advice to support UK government decision makers. GJR was funded by the National Institute for Health Research Health Protection Research Unit (NIHR HPRU) in Emergency Preparedness and Response, a partnership between Public Health England, King's College London and the University of East Anglia. The views expressed are those of the author(s) and not necessarily those of the NIHR, Public Health England or the Department of Health and Social Care.

## Introduction

Governments across the world are using contact tracing services in order to provide a route out of lockdown from COVID-19. In the UK, the Government has launched a “Test, Trace and Isolate” system. This requires people who develop a new, continuous cough, a fever, or a loss of their sense of taste or smell (the ‘index case’) to follow a series of actions. First, they must book a test through a drive-through facility or have a test delivered to their home. Second, they (and any household members) must remain at home until they receive their test result. Third, for those who test positive, further isolation is advised and a process of tracing the person’s close contacts begins. Contacts are asked to quarantine themselves, and to request a test if they too, develop symptoms.

Every step of this system relies on people adhering to advice. To date, most attention has focused on the challenges involved in helping index cases or their contacts adhere to advice to remain in isolation or quarantine for the recommended period of time (1). However, challenges exist at every step. In this paper, we focus on the very first steps in the patient pathway: recognizing that one has relevant symptoms and reporting these to a health service (or in the case of the UK, deciding to request a test).

This process can itself be broken down into stages. Symptom perception is determined partly by physiological factors. These might include infection with COVID-19, but physical signs of illness can also be triggered by other medical factors or environmental factors. Symptom perception is influenced by multiple psychological and contextual factors, being more likely to occur among people who expect to experience a given symptom, or who are worried or anxious, and are hence monitoring themselves for symptoms (2, 3).

Seeking help, once a symptom has been perceived is then also determined by a range of factors. The person’s attribution of their symptoms plays a key role; most symptoms experienced in everyday life are appraised as being transient and benign, and are not brought to the attention of the health services. This appraisal is partly based on the severity, suddenness and duration of the symptom. Minor, gradually evolving and transient symptoms are less likely to be interpreted as indicating something troubling (4). However, awareness of specific health risks is also important. For example,

not recognizing a symptom as a possible warning sign is a key factor underlying delayed help seeking for cancer (5, 6) and rheumatoid arthritis (4, 7, 8).

Regardless of the cause of an individual's symptoms, once the person has decided they have a problem, the decision to seek help can be complex and result in delay. For example, an analysis in England found that of the 1732 people who described having what the authors termed an 'alarm' symptom for cancer over the past three months, 28.4% had not yet consulted a doctor about an unexplained lump, 30.4% had not sought help for unexplained pain, and 45.8% had not sought help for unexplained bleeding (9). Important factors influencing the decision to seek help include the fear of being seen as 'a time-waster' (4, 5, 10), competing demands on one's time (5, 10), worries about the impact or efficacy of any intervention that might be offered (4, 5), pressure from friends and family (11, 12) and perceptions that one is complying with official advice or using a service appropriately (13-15).

We are not aware of any currently published systematic reviews which explore factors associated with facilitating or deterring people from reporting symptoms during major health incidents involving an infectious disease outbreak. In this paper, we report a rapid review of the literature, to determine what factors influence symptom reporting during such an incident.

## **Methods**

Following the PRISMA guidelines (16) we developed a protocol for a rapid review to determine what factors influence symptom reporting during major health incidents.

### *Search strategy*

We developed a search strategy which included medical subject headings and free text terms. Key words for the search included terms for epidemics/pandemics (including coronavirus, avian influenza, Ebola, Middle East respiratory syndrome, severe acute respiratory syndrome, swine flu) and terms

characterizing symptom reporting (including help-seeking behaviour, symptom reporting, stigma, requesting/asking for a test). Three electronic databases (Medline, PsycINFO, ProQuest) were searched from inception to June 2020, the full list of search terms can be found in Appendix A.

### *Selection criteria*

For studies to be included in this review, they had to: report on primary research; be published in a peer-reviewed journal; be written in English; include factors associated with reporting symptoms to a healthcare unit, or accessing healthcare (i.e. facilitators, barriers, or features associated with the reporting of symptoms or accessing of healthcare) and include participants with experience of a major health incident, which had to be viral, contagious and not sexually transmitted. Citations from each database search were downloaded into EndNote and duplicates removed. Titles and abstracts of identified studies were screened by two reviewers for inclusion against criteria, until a good inter-rater reliability had been observed (percentage agreement  $\Rightarrow$ 90%). Initially 10% of references were double-screened, and as inter-rater agreement was good (98%), the remaining references were screened by one reviewer. All primary-level studies included after the first screen of citations were acquired in full and re-evaluated for eligibility (see Appendix B for studies that were excluded at full-text review).

### *Data extraction and synthesis*

Data extraction and synthesis was conducted independently by two reviewers, and discrepancies or difficulties with coding were resolved through discussion. Quality of each included study was assessed using the CASP (Critical Appraisals Skills Programme) Qualitative checklist for qualitative studies (17) or the BMJ Critical appraisal checklist for survey studies (18). A quality rating was assigned to each study, where ++ indicates that most ( $\geq$ 75%) or all of the checklist criteria have been met, + indicates that the checklist criteria have been partially met ( $\geq$ 50%-75%), and – indicates that the majority of checklist criteria have not been met ( $<$ 50%). Thematic synthesis was used to inductively identify emerging themes in qualitative findings across studies. Themes from individual

studies were integrated into a wider context, with overarching categories of themes and subthemes being developed. Themes were derived from the data presented within the included studies, emerging themes were placed into a thematic map representing the relationship between the overarching categories, themes and subthemes. Narrative synthesis was used to combine and summarise the findings from survey studies, this was embedded within the context of the qualitative findings to provide an overall narrative of the data.

## **Results**

The systematic search of electronic databases generated a total of 2107 references, and two additional references were identified through hand searching. Of these 2109 references, 58 were reviewed in full-text. Sixteen studies met the eligibility criteria (see Figure 1 for flow chart of study search and selection process).

### *Included studies*

The characteristics of the included studies are summarised in Table 1. Half the studies used qualitative methods (11, 19-25) and half used quantitative surveys (26-33).

The studies were conducted across 12 countries and included people with experience of the 2009 and 2010 H1N1 influenza pandemic (11, 24, 26, 27, 32), Ebola (20, 21, 23, 25, 33), avian influenza (29, 30), acute respiratory illness (22), influenza-like illness (28, 31) and any infectious disease (19).

### *Identified themes*

Five themes were identified as facilitators of symptom reporting or accessing healthcare: accurate and informative communication; symptom severity; concern about exposure; ease of access; relationship with healthcare provider. Seven themes were identified as barriers of symptom reporting

or accessing healthcare: lack of knowledge; fear; stigmatization; invasion of privacy; low concern about symptoms; economics; practicalities of attending healthcare facility. See Figure 2 and 3 for theme maps for facilitators and barriers of symptom reporting. These themes (and subthemes) are elaborated below. The synthesis of quantitative survey data also highlighted a number of demographic features associated with those reporting symptoms and those seeking healthcare, summarised below.

### **Facilitators of symptom reporting/accessing healthcare**

#### ***Accurate and informative communication***

Participants found that education about symptoms (19, 21, 30, 31) and about routes of transmission (30) enabled them to feel confident about reporting symptoms and seeking help. Participants emphasized that they would be happier to report symptoms if they understood the rationale behind reporting, and if their personal responsibility was emphasised (19):

*"I think most people would be happy if they knew there was a risk, if you could tell them why you're asking the questions."* ((19), pg. 9)

Participants also highlighted that having confidence that the reporting system was effective and efficient would facilitate reporting (19).

#### ***Symptom severity***

Participants reported that the unusualness of symptoms, particularly in terms of severity and duration, were powerful prompts to access healthcare (11, 29)

*"I've had a cold and I've had the flu and it only lasted about 2 days. But I had this for about a week and a half. It's the first I've had a cold that long and I was just thinking the worst"* ((11) pg. 3)

Early access to healthcare was also facilitated when people perceived the illness as dangerous (29, 30). Participants were more motivated to seek treatment earlier when the importance of early response was emphasised, and where exposure to survivors built hope about recovery (21, 29). Participants expressed the view that if they were confident that they were experiencing a genuine illness they would feel comfortable about disclosing symptoms (19).

### ***Concern about exposure***

Participants were motivated to seek advice if they were concerned or uncertain about exposure (11). Another related motivator was a desire to gain peace of mind (11). Furthermore, those with personal risk factors (including age and underlying health conditions) were particularly compelled to contact healthcare services (11). Social pressures also facilitated help-seeking behaviour, both in terms of fears about exposing others to the disease, and pressure from others to report symptoms (11).

### ***Ease of access***

The physical proximity of healthcare facilities and the importance that these were local and community-based was highlighted as facilitators to accessing healthcare as the people working in those facilities would be more likely to be known and trusted (20, 25). Being able to walk to facilities also resolved transportation issues from a practical perspective, and provided an emotional facilitating factor as many participants described an intense fear of ambulances (20, 22)

### ***Relationship with healthcare provider***

Participants were more likely to seek help if they were encouraged to do so by familiar and trusted healthcare professionals (20). Help-seeking behaviour was also facilitated through healthcare professional's willingness to discuss symptoms and provide information (22). Conversely, having to



contact a new and unknown healthcare provider was highlighted as a barrier that delayed the decision to seek healthcare (24).

## **Barriers of symptom reporting/accessing healthcare**

### ***Lack of knowledge***

Participants described a poor understanding of the characteristics of a new disease and how this could act as a barrier to help-seeking behaviour (19, 25). More specifically, participants talked about gaps in knowledge about symptoms (33) gaps in knowledge about testing (20, 25) and gaps in knowledge about treatment (20, 25) and how these gaps could be filled with rumours and myths that could make people even more fearful about accessing healthcare:

*“There were rumors that the needle to test you actually is poison and the test kills you.”* ((20), pg. 68)

### ***Fear***

Fear emerged as a recurrent barrier to symptom reporting, this included: fear of the what may happen if a person caught the disease, fear of receiving treatment, and of the treatment system (20); fear of being infected in a healthcare setting (23); fears of being sucked into the system that arose when people witnessed sick people being taken away and never returning (20, 25); fear of the hospital or clinic environment (24, 25, 33); fear of the reaction they may receive from the healthcare worker, i.e. of not being believed (19) or of being seen to make a fuss (33).

### ***Stigmatisation***

Participants anticipated stigmatization and the desire to avoid this created a barrier to reporting symptoms (19, 22, 23). People worried about experiencing stigma in the workplace, in the wider

community, and were concerned about social stigma that may be attached to family members of those who had developed severe illness.

### ***Invasion of privacy***

Participants were wary that detailed questioning about symptoms could be experienced as an invasion of privacy and create or increase feelings of anxiety and distrust (19). The need for the protection of employee privacy and confidentiality was also raised, in the context of healthcare workers reporting symptoms (19).

### ***Low concern about symptoms***

Juxtaposed against the finding that concern about exposure could act as a facilitator to symptom reporting, others experienced low concern about symptoms and this acted as a barrier to help-seeking. For some people, this took the form of a fatalistic approach, with tests being perceived as pointless and disease inevitable (21), or the lack of an effective treatment delaying the decision to seek healthcare (24). Others just did not feel sufficiently ill to report symptoms or access healthcare (25, 29, 33):

*"Because based on what the medical people say, if it is high fever, then you will say this has gone beyond limit. Because there are times when we get malaria and common cold before this Ebola. So you cannot just start feeling feverish and you say you have to call 117." ((25) pg. 7)*

Some participants believed that there was no need to access healthcare as they would get better on their own (22, 29), or preferred to try home-based healthcare as a first-line treatment option (23-25).

One study found that exposure to media coverage reduced worry and decreased healthcare service use. (32)

### ***Economics***

Economic barriers to accessing healthcare were also experienced, because participants could not afford healthcare (23-25), or were worried about a negative impact on their employment or had no paid sick leave (24).

### ***Practicalities of attending a healthcare facility***

For some people the healthcare facility was too far away to travel to (29), and a lack of transportation (23, 24, 29), or not being able to afford to travel (29) imposed practical barriers to accessing healthcare, particularly for those living in rural communities. Other practical barriers to help-seeking behaviour included: not having time to visit a healthcare facility (29); lacking childcare (29); and a language or communication barrier (24).

### ***Associated features of those reporting symptoms***

Three studies found that women were more likely to report symptoms than men (26, 28, 31), we cannot however, determine if this is because women were more likely to contract the illness. Two studies reported that older people (aged 65 years or over) were less likely to report symptoms than those who could be categorized as younger or middle-aged, although these age bands were large, covering 18 to 49 year olds (26) or 25-64 years (28). One study found that white participants were more likely to report symptoms than black participants (26). However, the relationship of ethnicity and reporting was more complex than all black and minority ethnic (BAME) groups being less likely to report symptoms, as the same study (26) found that American Indian/Alaska Native participants were more likely to report symptoms than white adults. Finally, two studies found that people with higher levels of education were more likely to report symptoms than those who had spent less time in education.

## **Associated features of those seeking healthcare**

Two studies found that women were more likely to seek medical care than men (26, 31). In an opposite pattern to the reporting of symptoms, one study reported that those with primary level education or below were more likely to seek medical care than those with tertiary education or above (31). One study found that people from ethnic minority groups were more likely to access healthcare (32). Two studies reported that those with underlying health conditions (31, 32) were more likely to have sought medical care, and one of those studies also found that people living in larger households (Rubin 2010b) were more likely to access healthcare. Again, within this review we cannot determine if greater levels of seeking healthcare by these groups is due to an increased likelihood that they have contracted the illness. Finally, mixed results were reported across studies on the association between age and healthcare seeking behaviour, with two studies finding that older adults (aged at least 60 or 65 years) were more likely to seek healthcare (26, 31), and another study in which participants indicated that they felt too old to seek care (29). Another two studies found no direct association between age and help-seeking behaviour, but found relationships with other variables. One study reported a relationship between age and gender with males under the age of 25 being more likely to seek medical attention than women under the age of 25 (27). Another study reported a relationship between age and ethnicity, as for BAME respondents the longest duration between onset of symptoms and seeking initial treatment was found for an older age group, while for white respondents the longest duration was reported by children and young people (24).

## **Discussion**

### *Principal finding*

The evidence within this review shows a number of distinct factors which can act as either facilitators or barriers to people reporting symptoms to, or seeking care from, the health services during an emerging infectious disease outbreak. These include fear or concern about exposure, knowledge & information, level of concern over symptoms, and practical considerations. Additional factors are

related to invasion of privacy and stigmatisation. A number of demographic factors should also be considered, including sex, age, ethnicity and education.

### *Interpretation of results*

Our thematic analysis identified four main themes which facilitate people either reporting symptoms or accessing health care facilities: symptom severity, concern about exposure, accurate and informative communication, relationship with health care provider and ease of access. For example when information is accurate, and communicated effectively people understand why they need to report symptoms, and feel enabled to do so (19), whereas when people have a poor understanding, either about testing, the disease, or disease symptoms they appear reluctant to visit a healthcare facility or report symptoms (20, 25). Public health officials need to ensure people receive appropriate information, working with the media, who during major health crisis play an important role (34). Calls for good communication are, of course, nothing new in the field of emergency response. However, we make no apologies for raising it once more. Without sustained effort on the part of official communicators, knowledge among the public can be surprisingly low. For example, five months into the COVID-19 pandemic only 59% of the UK population knew what symptoms they were being asked to be alert to (35). Additionally, the role of healthcare professionals is important, the data showed that people were more positive when the healthcare provider seemed willing to give them information and talk to them (22).

Accurate and informative communication links closely to the identified themes, “symptom severity” (a facilitator), and the theme “low concern about symptoms” (a barrier). If people are not sufficiently educated about relevant symptoms they may not feel it is appropriate to access healthcare, or report their symptoms; therefore, clear advice on severity and nature of symptoms is needed. These data are consistent with other studies which have shown that when people think their symptoms are minor or unimportant, they are less likely to report them (4). When people believed they had a genuine illness, and that symptoms were severe or serious, they would report them (19). These findings are supported by studies which show the greater the perceived perception of illness severity, the more likely they are to engage in precautionary behaviours (36), for example contacting the healthcare

service. While in daily life, such attitudes may be appropriate, during the COVID-19 outbreak, this represents a substantial problem for testing and contact tracing services. Given that people are infectious even if asymptomatic, it is essential to encourage people to report even mild symptoms without delay. A focus on this in messaging will be required, as our data suggest that this runs contrary to most people's natural inclinations.

Anxiety about exposure also increased people's motivations to seek advice or report symptoms. When people were concerned that their individual situation increased their susceptibility to a disease, they were more likely to engage with the healthcare system. In contrast, fear about what might happen next once 'within the system' was identified consistently across studies, where it acted as a barrier to reporting symptoms. These findings suggest that it is important to reduce fear about being infected by visiting a healthcare setting, or about receiving treatment, but instilling a sufficiently realistic degree of concern about the illness that motivates people to engage with the system.

Practical issues were regularly reported in the evidence. Having a health care facility embedded in the local community, and within walking distance was a facilitator for people reporting symptoms. However, when facilities were deemed too far to get to, too expensive to travel to, or too difficult to travel to, this was seen as a barrier. The cost of accessing the healthcare system was also a consideration for many. Indirect economic factors were also important. People reported difficulties with getting time off work and not having paid sick leave. During an emerging infectious disease outbreak, tackling economic barriers to seeking testing should be an essential component of any fully functioning public health response.

Evidence on the associated features for those seeking healthcare and those reporting symptoms showed clear differences between women and men, different age groups, and people from different ethnic backgrounds. Studies showed that women consistently reported symptoms more often, and were more likely to seek healthcare than men; highlighting that more needs to be done to engage the male population. However, the data were not consistent in relation to age or ethnicity.

### *Strengths & Limitations*

Despite this being a rapid review of the evidence, we conducted a comprehensive search strategy across multiple databases, with screening conducted by two independent reviewers. The review includes 16 studies providing a depth of evidence from across the globe, supporting the generalisability of findings. We have described these studies in detail, and demonstrated clear themes in the analysis to enhance understanding of the existing evidence. However, as with all rapid reviews, several limitations must be considered. We cannot rule out the possibility that other potentially relevant evidence exists which has not been included. Additionally, a number of the included studies were rated moderate or low quality, this was often due to suboptimal reporting of included participants and research methods.

### **Conclusion**

Findings from this review suggest that in the context of the COVID pandemic, governments seeking to increase the proportion of symptomatic people accessing testing services should:

1. Ensure information on symptoms is clear; that reporting a new, continuous cough, a fever, or a loss of sense of taste or smell is important. It must be emphasised even mild or minor symptoms must be reported without delay;
2. Make testing facilities easy to access and remove any economic barriers associated with their use;
3. Provide assurance that testing facilities are safe from infection;
4. Target the male population to increase their uptake of services.

**Table 1: Characteristics of included studies**

Author and country	Study design	Infectious disease	Participants	Study aim	Sample size	Percentage female	Percentage BAME (non-white)	Included Themes	Study quality*
Aghaizu 2011 (19)  England, Germany, Greece & Hungary	Qualitative study; focus groups	Any infectious disease	Hospital based healthcare workers	To determine Healthcare workers' attitudes to monitoring their sickness, absence and reporting infectious disease symptoms	49	NR	NR	<ul style="list-style-type: none"> <li>• Facilitators of symptom reporting               <ul style="list-style-type: none"> <li>○ Accurate &amp; Informative communication</li> <li>○ Symptom severity</li> </ul> </li> <li>• Barriers to symptom reporting               <ul style="list-style-type: none"> <li>○ Fear</li> <li>○ Lack of knowledge</li> <li>○ Invasion of privacy</li> <li>○ Economics</li> <li>○ Stigmatisation</li> </ul> </li> </ul>	+
Biggerstaff 2012 (26)  US	Quantitative study; telephone survey	H1N1 influenza like illness (ILI)	General adult population reporting ILI symptoms	To characterise people reporting ILI and to evaluate trends in healthcare seeking behaviours, clinical diagnosis and	216, 431	62	22	<ul style="list-style-type: none"> <li>• Associated features of reporting symptoms               <ul style="list-style-type: none"> <li>○ Demographics</li> </ul> </li> </ul>	+



Author and country	Study design	Infectious disease	Participants	Study aim	Sample size	Percentage female	Percentage BAME (non-white)	Included Themes	Study quality*
				treatment of pH1N1					
Brooks-Pollock (27)  England	Quantitative study; online survey	H1N1 influenza like illness (ILI)	General adult population reporting ILI symptoms	To quantify healthcare seeking behaviour during the 2009 H1N1v epidemic	1,522	NR	NR	<ul style="list-style-type: none"> <li>• Associated features of reporting symptoms <ul style="list-style-type: none"> <li>○ Demographics</li> </ul> </li> </ul>	+
Carter 2017 (20)  Sierra Leone	Qualitative study; face to face interview	Ebola	Adults living in Ebola-affected communities	To determine barriers and enablers of treatment seeking behaviour for Ebola	35	NR	NR	<ul style="list-style-type: none"> <li>• Facilitators of symptom reporting <ul style="list-style-type: none"> <li>○ Ease of access</li> <li>○ Relationship with healthcare provider</li> </ul> </li> <li>• Barriers to symptom reporting <ul style="list-style-type: none"> <li>○ Fear</li> <li>○ Lack of knowledge</li> </ul> </li> </ul>	+
Carter 2017a (21)  Sierra Leone	Qualitative study; face to face interviews, focus groups and	Ebola	Adults living in Ebola-affected communities	To determine barriers and enablers of treatment seeking behaviour for Ebola	350	NR	NR	<ul style="list-style-type: none"> <li>• Facilitators of symptom reporting <ul style="list-style-type: none"> <li>○ Accurate &amp; Informative communication</li> <li>○ Relationship with healthcare provider</li> </ul> </li> </ul>	+

Author and country	Study design	Infectious disease	Participants	Study aim	Sample size	Percentage female	Percentage BAME (non-white)	Included Themes	Study quality*
	questionnaires							<ul style="list-style-type: none"> <li>• Barriers to symptom reporting               <ul style="list-style-type: none"> <li>○ Low concern about symptoms</li> </ul> </li> </ul>	
Kjelso 2016 (28)  Denmark	Quantitative study; online data from "Influmeter" website	Influenza like illness (ILI)	General adult population reporting ILI symptoms	To describe the participants representatively using a new online system (as compared to the Danish population) and to compare the signal detection to existing surveillance systems	1,089	67	NR	<ul style="list-style-type: none"> <li>• Associated features of those reporting symptoms               <ul style="list-style-type: none"> <li>○ Demographics</li> </ul> </li> </ul>	-
Kreslake 2016 (29)	Quantitative study; healthcare	Avian influenza (HPAI)	General adult population reporting ILI	To determine the use of healthcare facilities, perceptions of	2,520	NR	NR	<ul style="list-style-type: none"> <li>• Facilitators of symptom reporting               <ul style="list-style-type: none"> <li>○ Symptom severity</li> </ul> </li> </ul>	-

Author and country	Study design	Infectious disease	Participants	Study aim	Sample size	Percentage female	Percentage BAME (non-white)	Included Themes	Study quality*
Indonesia	utilisation survey and face to face survey	H5N1)	symptoms (survey data). Interviews conducted in those with and without symptoms	healthcare services and intentions to seek treatment in hypothetical scenarios				<ul style="list-style-type: none"> <li>• Barriers to symptom reporting               <ul style="list-style-type: none"> <li>○ Low concern about symptoms</li> <li>○ Economics</li> <li>○ Practicalities of attending healthcare facility</li> <li>○ Stigmatisation</li> </ul> </li>   <li>• Associated features of those seeking healthcare               <ul style="list-style-type: none"> <li>○ Demographics</li> </ul> </li> </ul>	
Lohiniva 2011 (22)  Egypt	Qualitative study; focus groups and semi-structured interviews	Acute respiratory illness (ARI)	Household caregiver (defined as the primary caretaker of children or	To explore the classification of ARI, to understand modes of transmission, symptoms of severity, and to explore health	18 focus groups and 20 interviews	100	NR	<ul style="list-style-type: none"> <li>• Facilitators of symptom reporting               <ul style="list-style-type: none"> <li>○ Ease of access</li> <li>○ Relationship with healthcare provider</li> </ul> </li> </ul>	+

Author and country	Study design	Infectious disease	Participants	Study aim	Sample size	Percentage female	Percentage BAME (non-white)	Included Themes	Study quality*
			other household members during ARI episodes	seeking behaviours and home management practices				<ul style="list-style-type: none"> <li>• Barriers to symptom reporting               <ul style="list-style-type: none"> <li>○ Low concern about symptoms</li> <li>○ Stigmatisation</li> </ul> </li> </ul>	
Manabe 2012 (30)  Vietnam	Quantitative study; face to face interviews	Avian influenza (H5H1)	General population of those living in -affected and non-affected communities	To assess knowledge, attitude, practice and emotional response to H5N1	543	68	NR	<ul style="list-style-type: none"> <li>• Facilitators of symptom reporting               <ul style="list-style-type: none"> <li>○ Symptom severity</li> <li>○ Accurate &amp; informative communication</li> </ul> </li> </ul>	+
McLean 2018 (23)  Liberia	Qualitative study; semi-structured interviews	Ebola	Individuals from households who reported being sick	To explore experiences of illness, impact of disease and mortality	226	55	NR	<ul style="list-style-type: none"> <li>• Barriers to symptom reporting               <ul style="list-style-type: none"> <li>○ Practicalities of attending healthcare facility</li> <li>○ Economics</li> <li>○ Fear</li> <li>○ Stigmatisation</li> <li>○ Low concern about symptoms</li> </ul> </li> </ul>	-

Author and country	Study design	Infectious disease	Participants	Study aim	Sample size	Percentage female	Percentage BAME (non-white)	Included Themes	Study quality*
Meng 2016 (31)  Hong Kong	Quantitative study; telephone surveys	Influenza like illness (ILI)	General adult population	To compare healthcare seeking behaviours and self-medication of ILI patients between summer and winter influenza epidemics	1,040	62	NR	<ul style="list-style-type: none"> <li>• Facilitators of symptom reporting               <ul style="list-style-type: none"> <li>○ Accurate &amp; informative communication</li> </ul> </li> <li>• Associated features of those reporting symptoms               <ul style="list-style-type: none"> <li>○ Demographics</li> </ul> </li> </ul>	+
Rubin 2010 (11)  UK	Qualitative study; semi-structured interviews	Influenza A (H1N1)	General adult population	To understand why people contacted the health service about swine flu (H1N1), and to understand patients' motivations for seeking advice	5,419	58	27	<ul style="list-style-type: none"> <li>• Facilitators of symptom reporting               <ul style="list-style-type: none"> <li>○ Symptom severity</li> <li>○ Concern about exposure</li> </ul> </li> </ul>	++
Rubin 2010a (32)	Quantitative study; telephone survey	Influenza A (H1N1)	General adult population	To determine associations between worry about catching swine flu (H1N1) and	33	59	7	<ul style="list-style-type: none"> <li>• Barriers to symptom reporting               <ul style="list-style-type: none"> <li>○ Low concern about symptoms</li> <li>○ Concern about exposure</li> </ul> </li> </ul>	+

Author and country	Study design	Infectious disease	Participants	Study aim	Sample size	Percentage female	Percentage BAME (non-white)	Included Themes	Study quality*
UK				level of media coverage, and the role of media coverage and advertising in predicting accessing healthcare				<ul style="list-style-type: none"> <li>• Associated features of those reporting symptoms               <ul style="list-style-type: none"> <li>○ Demographics</li> </ul> </li> </ul>	
Soyemi 2009 (24)  US	Qualitative study; telephone interviews	Influenza (pH1N1)	People from Illinois who had been hospitalised for pH1N1	To identify individual level factors relating to health seeking behaviour	2,824 data surveillance records and 33 interviews	53 (surveillance records) and 42 (interviews)	55	<ul style="list-style-type: none"> <li>• Barriers to symptom reporting               <ul style="list-style-type: none"> <li>○ Practicalities of attending healthcare facility</li> <li>○ Economics</li> <li>○ Fear</li> <li>○ Stigmatisation</li> <li>○ Low concern about symptoms</li> </ul> </li> <li>• Associated features of those reporting symptoms               <ul style="list-style-type: none"> <li>○ Demographics</li> </ul> </li> </ul>	+

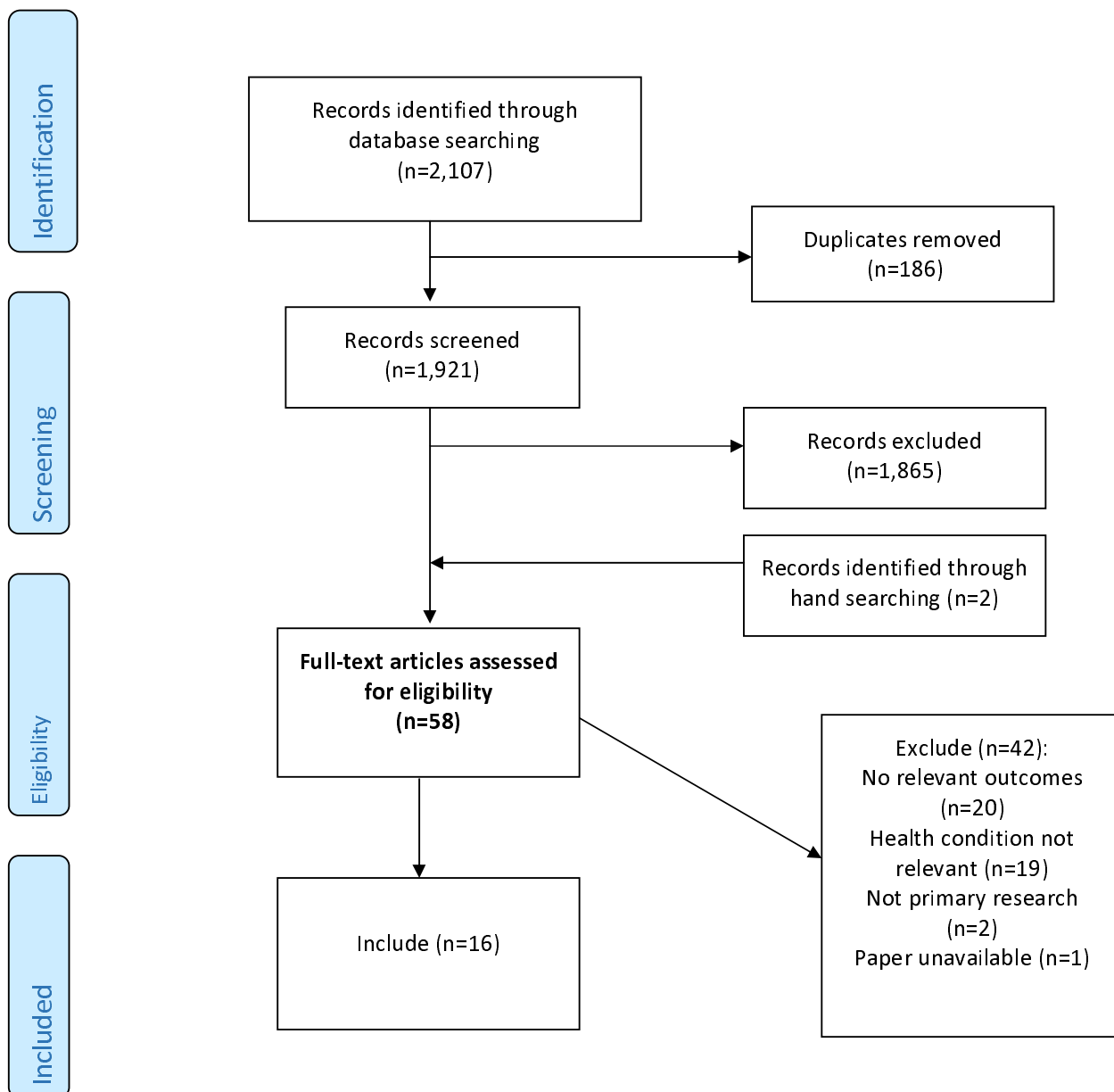
Author and country	Study design	Infectious disease	Participants	Study aim	Sample size	Percentage female	Percentage BAME (non-white)	Included Themes	Study quality*
Tate 2017 (33)  US	Quantitative study; electronic or mailed survey	Ebola	People from New York City who had been part of the active monitoring scheme for Ebola	To evaluate frequency of reporting false data during active Ebola monitoring, factors associated with reporting false data, and the psychosocial impact of preferences during the Ebola active monitoring	393	41	NR	<ul style="list-style-type: none"> <li>• Barriers to symptom reporting               <ul style="list-style-type: none"> <li>○ Fear</li> <li>○ Low concern about symptoms</li> <li>○ Lack of knowledge</li> </ul> </li> </ul>	+
Yamanis 2016 (25)  Sierra Leone	Qualitative study; semi-structured interviews	Ebola	Adults living in Ebola-affected communities	To explore perceptions and intentions of those using the Ebola response system	30	47	NR	<ul style="list-style-type: none"> <li>• Facilitators of symptom reporting               <ul style="list-style-type: none"> <li>○ Ease of access</li> </ul> </li> <li>• Barriers to symptom reporting               <ul style="list-style-type: none"> <li>○ Fear</li> <li>○ Low concern about symptoms</li> </ul> </li> </ul>	++

Author and country	Study design	Infectious disease	Participants	Study aim	Sample size	Percentage female	Percentage BAME (non-white)	Included Themes	Study quality*
								<ul style="list-style-type: none"> <li>○ Lack of knowledge</li> <li>○ Economics</li> </ul>	

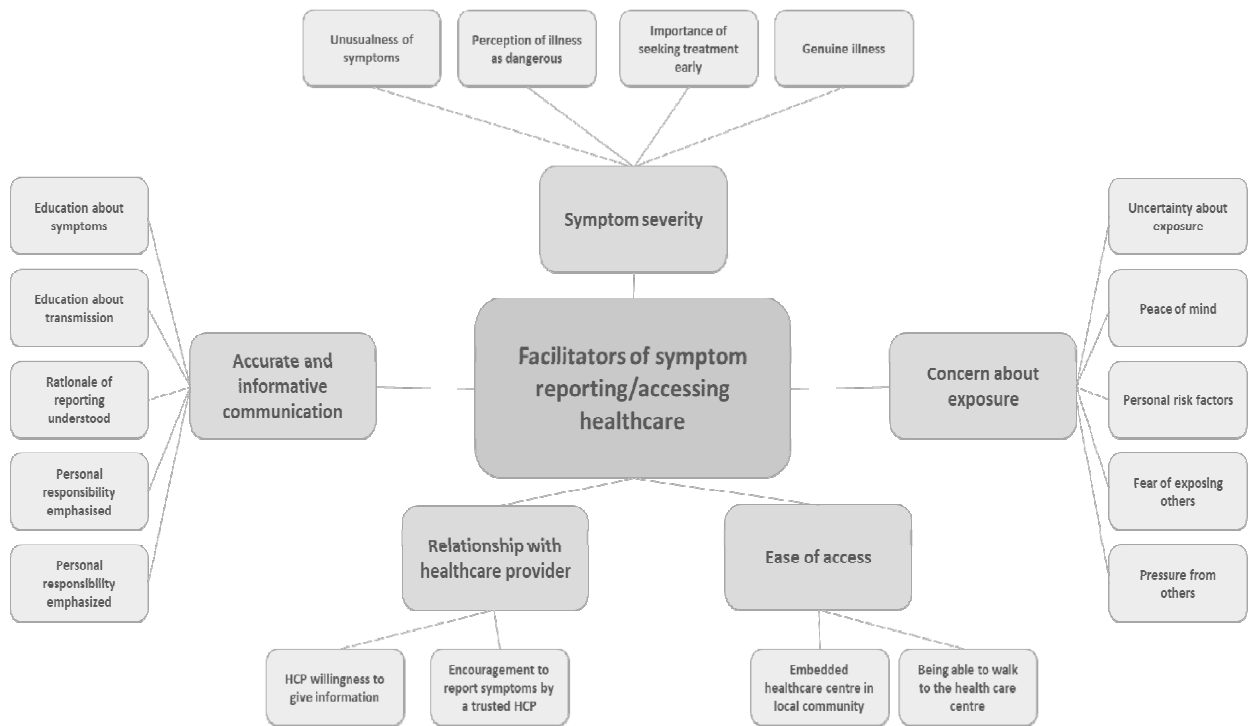
\*Study quality: Assessed using relevant tool; CASP for qualitative studies and BMJ survey checklist for quantitative surveys: Scores = ++ most of checklist criteria met; + some of checklist criteria met; - insufficient checklist criteria met.



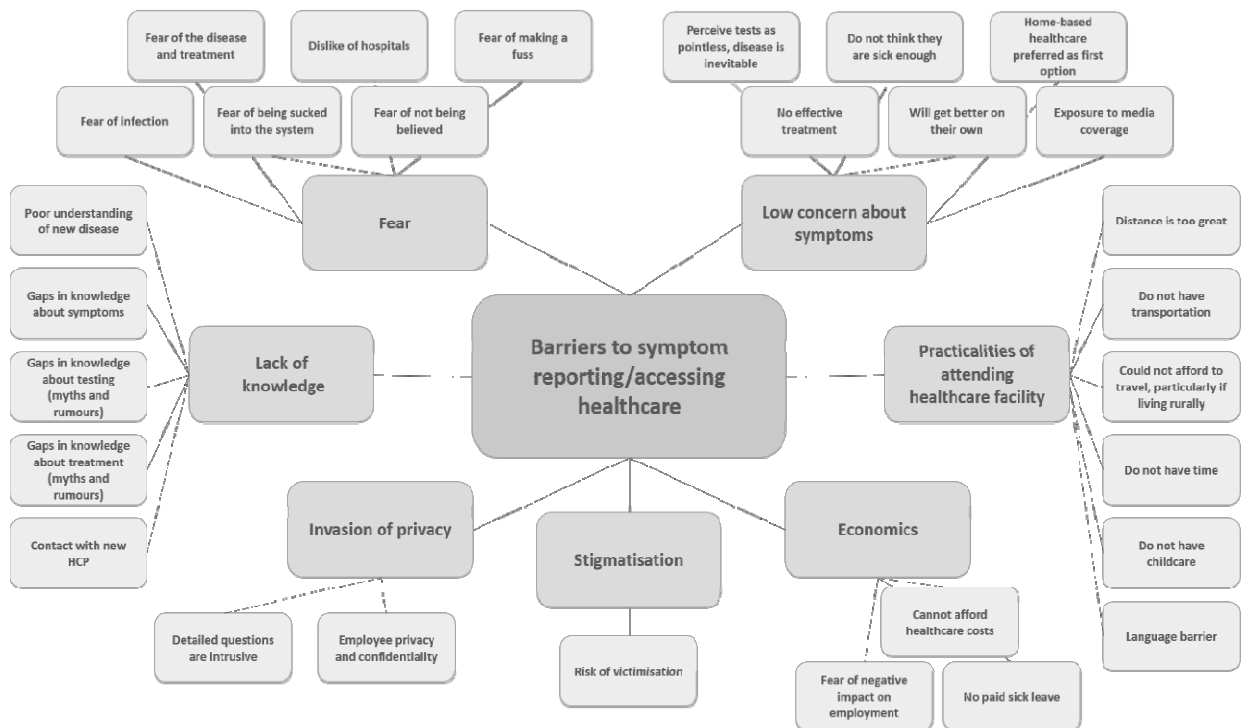
Figure 1: PRISMA flow chart



**Figure 2: Facilitators of symptom reporting theme map**



**Figure 3: Barriers of symptom reporting theme map**



## References

1. Webster RK, Brooks SK, Smith LE, Woodland L, Wessely S, Rubin GJ. How to improve adherence with quarantine: rapid review of the evidence. *Public Health*. 2020;182:163-169.
2. Webster RK, Weinman J, Rubin GJ. A systematic review of factors that contribute to nocebo effects. *Health Psychol*. 2016;35:1334-1355.
3. Vertigan AE. Somatic cough syndrome or psychogenic cough—what is the difference? *Journal of Thoracic Disease*. 2017;9:831-838.
4. Simons G, Mallen CD, Kumar K, Stack RJ, Raza K. A qualitative investigation of the barriers to help-seeking among members of the public presented with symptoms of new-onset rheumatoid arthritis. *The Journal of rheumatology*. 2015;42:585-592.
5. Smith LK, Pope C, Botha JL. Patients' help-seeking experiences and delay in cancer presentation: a qualitative synthesis. *Lancet*. 2005;366:825-831.
6. Walter F, Webster A, Scott S, Emery J. The Andersen Model of Total Patient Delay: A Systematic Review of Its Application in Cancer Diagnosis. *Journal of Health Services Research & Policy*. 2012;17:110-118.
7. Stack RJ, Shaw K, Mallen C, Herron-Marx S, Horne R, Raza K. Delays in help seeking at the onset of the symptoms of rheumatoid arthritis: a systematic synthesis of qualitative literature. *Ann Rheum Dis*. 2012;71:493-497.
8. Van der Elst K, De Cock D, Vecoven E, Arat S, Meyfroidt S, Joly J, Moons P, Verschueren P, Westhovens R, Care RASG. Are illness perception and coping style associated with the delay between symptom onset and the first general practitioner consultation in early rheumatoid arthritis management? An exploratory study within the CareRA trial. *Scand J Rheumatol*. 2016;45:171-178.

9. Whitaker KL, Smith CF, Winstanley K, Wardle J. What prompts help-seeking for cancer 'alarm' symptoms? A primary care based survey. *Br J Cancer*. 2016;114:334-339.
10. Association BD: Care-seeking and oral health: BDA evidence summary2013.
11. Rubin GJ, Amlôt R, Carter H, Large S, Wessely S, Page L. Reassuring and managing patients with concerns about swine flu: Qualitative interviews with callers to NHS Direct. *BMC Public Health*. 2010;10:451.
12. Tiwana R, Rowland J, Fincher M, Raza K, Stack RJ. Social interactions at the onset of rheumatoid arthritis and their influence on help-seeking behaviour: A qualitative exploration. 2015;20:648-661.
13. Rubin GJ, Page L, Morgan O, Pinder RJ, Riley P, Hatch S, Maguire H, Catchpole M, Simpson J, Wessely S. Public information needs after the poisoning of Alexander Litvinenko with polonium-210 in London: Cross sectional telephone survey and qualitative analysis. *Br Med J*. 2007;335:1143-1146.
14. Flurey CA, Morris M, Pollock J, Richards P, Hughes R, Hewlett S. A Q-methodology study of flare help-seeking behaviours and different experiences of daily life in rheumatoid arthritis. *BMC Musculoskelet Disord*. 2014;15:364.
15. Sheppard J, Kumar K, Buckley CD, Shaw KL, Raza K. 'I just thought it was normal aches and pains': a qualitative study of decision-making processes in patients with early rheumatoid arthritis. *Rheumatology*. 2008;47:1577-1582.
16. Moher D, Liberati A, Tetzlaff J, Altman DG. Preferred reporting items for systematic reviews and meta-analyses: The PRISMA statement. *International Journal of Surgery*. 2010;8:336-341.
17. CASP: Critical Appraisal Skills Programme. CASP Qualitative Checklist (online). 2018.
18. BMJ: Critical appraisal checklist for a questionnaire study. in *BMJ Online*2004.

19. Aghaizu A, Elam G, Ncube F, Thomson G, Szilagyi E, Eckmanns T, Poulakou G, Catchpole M. Preventing the next 'SARS' - European healthcare workers' attitudes towards monitoring their health for the surveillance of newly emerging infections: qualitative study. *BMC Public Health*. 2011;11:541.
20. Carter SE, O'Reilly M, Frith-Powell J, Kargbo AU, Byrne D, Niederberger E. Treatment seeking and Ebola Community Care Centers in Sierra Leone: A qualitative study. *Journal of Health Communication*. 2017;22:66-71.
21. Carter SE, O'Reilly M, Walden V, Frith-Powell J, Kargbo AU, Niederberger E. Barriers and enablers to treatment-seeking behavior and causes of high-risk practices in Ebola: A case study from Sierra Leone. *Journal of Health Communication*. 2017;22:31-38.
22. Lohiniva AL, Talaat M, Dueger E, Mansour A, Abokela M, Genedy M, Saeed AK, El-Sayed N. Acute respiratory illness and health-seeking behavior in Egyptian villages: Enhancing pandemic preparedness by understanding local realities. *International Quarterly of Community Health Education*. 2011;32:11-22.
23. McLean KE, Abramowitz SA, Ball JD, Monger J, Tehoungue K, McKune SL, Fallah M, Omidian PA. Community-based reports of morbidity, mortality, and health-seeking behaviours in four Monrovia communities during the West African Ebola epidemic. *Glob Public Health*. 2018;13:528-544.
24. Soyemi K, Medina-Marino A, Sinkowitz-Cochran R, Schneider A, Njai R, McDonald M, Glover M, Garcia J, Aiello AE. Disparities among 2009 pandemic influenza A (H1N1) hospital admissions: a mixed methods analysis--Illinois, April-December 2009. *PLoS ONE*. 2014;9:e84380.
25. Yamanis T, Nolan E, Shepler S. Fears and Misperceptions of the Ebola Response System during the 2014-2015 Outbreak in Sierra Leone. *PLoS Negl Trop Dis*. 2016;10:e0005077.
26. Biggerstaff M, Jung M, Kamimoto L, Balluz L, Finelli L. Self-reported influenza-like illness and receipt of influenza antiviral drugs during the 2009 pandemic, United States, 2009-2010. *Am J Public Health*. 2012;102:e21-e26.

27. Brooks-Pollock E, Tilston N, Edmunds WJ, Eames KTD. Using an online survey of healthcare-seeking behaviour to estimate the magnitude and severity of the 2009 H1N1v influenza epidemic in England. *BMC Infect Dis.* 2011;11:68.
28. Kjelso C, Galle M, Bang H, Ethelberg S, Krause TG. Influmeter - an online tool for self-reporting of influenza-like illness in Denmark. *Infect Dis (Lond).* 2016;48:322-327.
29. Kreslake JM, Wahyuningrum Y, Iuliano AD, Storms AD, Lafond KE, Mangiri A, Praptiningsih CY, Safi B, Uyeki TM, Storey JD. The Intersection of Care Seeking and Clinical Capacity for Patients With Highly Pathogenic Avian Influenza A (H5N1) Virus in Indonesia: Knowledge and Treatment Practices of the Public and Physicians. *Disaster med.* 2016;10:838-847.
30. Manabe T, Hanh TT, Lam DM, Van DTH, Thuy PTP, Huyen DTT, Phuong TTM, Minh DH, Takasaki J, Chau NQ, Toan LQ, Kudo K. Knowledge, attitudes, practices and emotional reactions among residents of avian influenza (H5N1) hit communities in Vietnam. *PLoS ONE.* 2012;7.
31. Meng H, Liao Q, Suen LK, O'Donoghue M, Wong CM, Yang L. Healthcare seeking behavior of patients with influenza like illness: comparison of the summer and winter influenza epidemics. *BMC Infect Dis.* 2016;16:499.
32. Rubin GJ, Potts, H.W.W.; Michie, S. The impact of communications about swine flu (influenza A H1N1v) on public responses to the outbreak: results from 36 national telephone surveys in the UK. *Health Technology Assessment.* 2010;14.
33. Tate A, Ezeoke I, Lucero DE, Huang CC, Saffa A, Varma JK, Vora NM. Reporting of False Data During Ebola Virus Disease Active Monitoring-New York City, January 1, 2015-December 29, 2015. *Health Secur.* 2017;15:509-518.
34. Garfin DR, Silver RC, Holman EA. The novel coronavirus (COVID-2019) outbreak: Amplification of public health consequences by media exposure. *Health Psychol.* 2020;39:355-357.
35. Smith M, . What are the symptoms of COVID-19? Only 59% of Britons know all three. in *YouGov2020.*

36. Rubin GJ, Amlot R, Rogers MB, Hall I, Leach S, Simpson J, Wessely S. Perceptions and reactions with regard to pneumonic plague. *Emerging infectious diseases*. 2010;16:120-122.

## Appendix A

Ovid MEDLINE(R) and Epub Ahead of Print, In-Process & Other Non-Indexed Citations and Daily 1946 to June 09, 2020

Date searched: 10<sup>th</sup> June 2020

#	Search terms	Hits
1	Pandemics/	9950
2	Coronavirus Infections/	9674
3	Disease outbreaks/	79399
4	"avian influenza".mp.	10791
5	Influenza A Virus, H1N1 Subtype/ or "bird flu".mp. or Influenza A Virus, H5N1 Subtype/	20603
6	Coronavirus/ or coronavirus.mp. or covid 19.mp. or covid-19.mp.	34377
7	Ebola.mp.	9045
8	"equine influenza".mp.	787
9	H1N1.mp.	21000
10	H5N1.mp.	7902
11	MERs.mp. or Middle East Respiratory Syndrome Coronavirus/	4868
12	"Middle East respiratory syndrome".mp.	2325
13	pandemic*.mp.	37034
14	Epidemics/ or epidemic*.mp.	109445
15	SARS Virus/ or SARs.mp. or Severe Acute Respiratory Syndrome/	16796
16	"severe acute respiratory syndrome".mp.	12771
17	"swine flu".mp.	956
18	Help-Seeking Behavior/	745
19	Help-seek*.mp.	6215
20	(symptom* adj3 report*).mp.	41088
21	(request* or ask* or demand* or call or contact* or access* or inquire* or enquire* or consult* or seek* or requir* or appl* or order* or need* or want*) adj3 (test*)	94989
22	(test* or diagnos*) adj3 (stigma* or fear* or worr* or shame* or reluctan* or knowledge or recogni* or risk perception or perceived risk)	26496
23	Or/1-17	248141
24	Or/18-22	167232
25	23 and 24	2169
26	limit 25 to humans	1542
27	limit 26 to english language	1418

APA PsycInfo 1806 to June Week 1 2020

Date searched: 10<sup>th</sup> June 2020

#	Search terms	Hits
1	exp Pandemics/	534
2	"avian influenza".mp.	114
3	"bird flu".mp.	34
4	coronavirus.mp. or covid 19.mp. or covid-19.mp.	280
5	Ebola.mp.	414



6	"equine influenza".mp.	0
7	H1N1.mp.	495
8	H5N1.mp.	57
9	MERs.mp. or "Middle East respiratory syndrome".mp.	99
10	pandemic*.mp.	2015
11	epidemic.mp. or exp Epidemics/	12570
12	SARs.mp. or "severe acute respiratory syndrome".mp.	525
13	"swine flu".mp.	92
14	exp Help Seeking Behavior/	13495
15	Help-seek*.mp.	10538
16	(symptom* adj3 report*).mp.	19817
17	(request* or ask* or demand* or call or contact* or access* or inquire* or enquire* or consult* or seek* or requir* or appl* or order* or need* or want*) adj3 (test*)	25925
18	(test* or diagnos*) adj3 (stigma* or fear* or worr* or shame* or reluctan* or knowledge or recogni* or risk perception or perceived risk)	22000
19	Or/1-13	14733
20	Or/14-18	84131
21	19 and 20	267
22	limit 21 to humans	257
23	limit 22 to english language	253

ProQuest (Coronavirus Research Database, Public Health Database, Social Science Database, Sociology Database and Internal Bibliography of the Social Science [IBSS])

Date searched: 11<sup>th</sup> June 2020

#	Search terms	Hits
1	"avian influenza" or "bird flu" or Coronavirus or "covid 19" or covid-19 or Ebola or "equine influenza" or H1N1 or H5N1 or MERs or "Middle East respiratory syndrome" or pandemic* or epidemic* or SARs or "severe acute respiratory syndrome" or "swine flu"	
2	Help-seek* or (symptom* N/3 report*) or (request* N/3 test*) or (ask* N/3 test*) or (demand* N/3 test*) or (call N/3 test*) or (contact* N/3 test*) or (access* N/3 test*) or (inquire* N/3 test*) or (enquire* N/3 test*) or (consult* N/3 test*) or (seek* N/3 test*) or (requir* N/3 test*) or (appl* N/3 test*) or (order* N/3 test*) or (need* N/3 test*) or (want* N/3 test*) or (test* N/3 stigma*) or (test* N/3 fear*) or (test* N/3 worr*) or (test* N/3 shame*) or (test* N/3 reluctan*) or (test* N/3 knowledge) or (test* N/3 recogni*) or (test* N3 "risk perception") or (test* N/3 "perceived risk") or (diagnos* N/3 stigma*) or (diagnos* N/3 fear*) or (diagnos* N/3 worr*) or (diagnos* N/3 shame*) or (diagnos* N/3 reluctan*) or (diagnos* N/3 knowledge) or (diagnos* N/3 recogni*) or (diagnos* N3 "risk perception") or (diagnos* N/3 "perceived risk")	
3	Search anywhere except full-text	
4	limit to peer reviewed; Scholarly journals; Article; English language	679

## Appendix B

Study ID	Reason for Exclusion	Bibliographic reference
Agarwal 2014	No relevant outcomes	Agarwal, V. (2014). A/H1N1 vaccine intentions in college students: An application of the theory of planned behavior. <i>Journal of American College Health</i> , 62(6), 416-424.
Almutairi 2015	No relevant outcomes	Almutairi, K. M., Al Helih, E. M., Moussa, M., Boshaiqah, A. E., Saleh Alajilan, A., Vinluan, J. M., & Almutairi, A. (2015). Awareness, attitudes, and practices related to coronavirus pandemic among public in Saudi Arabia. <i>Family &amp; community health</i> , 38(4), 332-340.
Arendt 2013	Health condition not relevant	Arendt, S., Rajagopal, L., Strohbehn, C., Stokes, N., Meyer, J., & Mandernach, S. (2013). Reporting of foodborne illness by US consumers and healthcare professionals. <i>International journal of environmental research and public health</i> , 10(8), 3684-3714.
Atiglo 2018	Health condition not relevant	Atiglo, D. Y., Larbi, R. T., Kushitor, M. K., Biney, A. A., Asante, P. Y., Dodoo, N. D., & Dodoo, F. N. A. (2018). Sense of community and willingness to support malaria intervention programme in urban poor Accra, Ghana. <i>Malaria journal</i> , 17(1), 289.
Balkhy 2010	No relevant outcomes	Balkhy, H. H., Abolfotouh, M. A., Al-Hathloul, R. H., & Al-Jumah, M. A. (2010). Awareness, attitudes, and practices related to the swine influenza pandemic among the Saudi public. <i>BMC infectious diseases</i> , 10(1), 42.
Dodds 2020	Not primary research	Dodds, C., & Fakoya, I. (2020). Covid-19: ensuring equality of access to testing for ethnic minorities. <i>BMJ</i> , 369.
Donovan 2001	Health condition not relevant	Donovan, B., Knight, V., McNulty, A. M., Wynne-Markham, V., & Kidd, M. R. (2001). Gonorrhoea screening in general practice: perceived barriers and strategies to improve screening rates. <i>Medical journal of Australia</i> , 175(8), 412-414.
Furr-Holden 2020	Not primary research	Furr-Holden, D., Carter-Pokras, O., Kimmel, M., & Mouton, C. (2020). Access to care during a global health crisis. <i>Health Equity</i> , 4(1), 150-157.

Ho 2015	Health condition not relevant	Ho, V., Zainal, N. H., Lim, L., Ng, A., Silva, E., & Kandiah, N. (2015). Voluntary cognitive screening: characteristics of participants in an Asian setting. <i>Clinical interventions in aging</i> , 10, 771.
Hui 2013	Health condition not relevant	Hui, C. L., Tang, J. Y., Wong, G. H., Chang, W. C., Chan, S. K., Lee, E. H., & Chen, E. Y. (2013). Predictors of help-seeking duration in adult-onset psychosis in Hong Kong. <i>Social psychiatry and psychiatric epidemiology</i> , 48(11), 1819-1828.
Kfour 2013	No relevant outcomes	Kfour, R. D. Á., & Richtmann, R. (2013). Influenza vaccine in pregnant women: immunization coverage and associated factors. <i>Einstein (Sao Paulo)</i> , 11(1), 53-57.
Langeni 2007	Health condition not relevant	Langeni, T. (2007). Contextual factors associated with treatment-seeking and higher-risk sexual behaviour in Botswana among men with symptoms of sexually transmitted infections. <i>African Journal of AIDS Research</i> , 6(3), 261-269.
Lau 2005	No relevant outcomes	Lau, J. T., Yang, X., Tsui, H. Y., & Kim, J. H. (2005). Impacts of SARS on health-seeking behaviors in general population in Hong Kong. <i>Preventive medicine</i> , 41(2), 454-462.
Lester 2016	No relevant outcomes	Lester, J., Paige, S., Chapman, C. A., Gibson, M., Jones, J. H., Switzer, W. M., ... & Frost, S. D. (2016). Assessing commitment and reporting fidelity to a text message-based participatory surveillance in rural western Uganda. <i>PloS one</i> , 11(6).
Lugova 2017	Health condition not relevant	Lugova, H., & Wallis, S. (2017). Cross-sectional survey on the dengue knowledge, attitudes and preventive practices among students and staff of a public university in Malaysia. <i>Journal of community health</i> , 42(2), 413-420.
Nielsen 2016	Health condition not relevant	Nielsen, A., Marrone, G., & De Costa, A. (2016). Chlamydia trachomatis among youth-testing behaviour and incidence of repeat testing in Stockholm County, Sweden 2010-2012. <i>PloS one</i> , 11(9).
Olowokure 2012	No relevant outcomes	Olowokure, B., Odedere, O., Elliot, A. J., Awofisayo, A., Smit, E., Fleming, A., & Osman, H. (2012). Volume of print media coverage and diagnostic testing for influenza A (H1N1) pdm09 virus during the early phase of the 2009 pandemic. <i>Journal of clinical virology</i> , 55(1), 75-78.

Orton 2006	Health condition not relevant	Orton, S. L., Stramer, S. L., & Dodd, R. Y. (2006). Self-reported symptoms associated with West Nile virus infection in RNA-positive blood donors. <i>Transfusion</i> , 46(2), 272-277.
Pearson 2008	Health condition not relevant	Pearson, S., & Makadzange, P. (2008). Help-seeking behaviour for sexual-health concerns: a qualitative study of men in Zimbabwe. <i>Culture, Health &amp; Sexuality</i> , 10(4), 361-376.
Perez 2012	No relevant outcomes	Perez, V., Uddin, M., Galea, S., Monto, A. S., & Aiello, A. E. (2012). Stress, adherence to preventive measures for reducing influenza transmission and influenza-like illness. <i>J Epidemiol Community Health</i> , 66(7), 605-610.
Philen 1989	No relevant outcomes	Philen, R., Mckinley, T., Kilbourne, E., & Parrish, R. G. (1989). Mass sociogenic illness by proxy: parentally reported epidemic in an elementary school. <i>The Lancet</i> , 334(8676), 1372-1376.
Plant 2010	Health condition not relevant	Plant, A., Montoya, J. A., Rotblatt, H., Kerndt, P. R., Mall, K. L., Pappas, L. G., ... & Klausner, J. D. (2010). Stop the sores: the making and evaluation of a successful social marketing campaign. <i>Health Promotion Practice</i> , 11(1), 23-33.
Plant 2014	Health condition not relevant	Plant, A., Javanbakht, M., Montoya, J. A., Rotblatt, H., O'Leary, C., & Kerndt, P. R. (2014). Check Yourself: A social marketing campaign to increase syphilis screening in Los Angeles County. <i>Sexually transmitted diseases</i> , 41(1), 50-57.
Randle 2018	Health condition not relevant	Randle, J., Nelder, M., Sider, D., & Hohenadel, K. (2018). Characterizing the health and information-seeking behaviours of Ontarians in response to the Zika virus outbreak. <i>Canadian Journal of Public Health</i> , 109(1), 99-107.
Rodriguez-Valero 2018	Health condition not relevant	Rodriguez-Valero, N., Oroz, M. L., Sanchez, D. C., Vladimirov, A., Espriu, M., Vera, I., ... & Carbayo, M. J. L. (2018). Mobile based surveillance platform for detecting Zika virus among Spanish Delegates attending the Rio de Janeiro Olympic Games. <i>PloS one</i> , 13(8).
Saak 2018	No relevant outcomes	Saak, A. E., & Hennessy, D. A. (2018). A model of reporting and controlling outbreaks by public health agencies. <i>Economic Theory</i> , 66(1), 21-64.
Shen 2020	No relevant outcomes	Shen, C., Chen, A., Luo, C., Zhang, J., Feng, B., & Liao, W. (2020). Using Reports of Symptoms and Diagnoses on Social Media to Predict COVID-19 Case Counts in Mainland China: Observational Infeveillance Study. <i>Journal of Medical Internet Research</i> , 22(5), e19421.

Stein 2014	No relevant outcomes	Stein, M. L., Van Steenberg, J. E., Chanyasanha, C., Tipayamongkhogul, M., Buskens, V., van der Heijden, P. G., ... & Kretzschmar, M. E. (2014). Online respondent-driven sampling for studying contact patterns relevant for the spread of close-contact pathogens: a pilot study in Thailand. <i>PLoS one</i> , 9(1).
Stein 2015	No relevant outcomes	Stein, M. L., van der Heijden, P. G., Buskens, V., van Steenberg, J. E., Bengtsson, L., Koppeschaar, C. E., ... & Kretzschmar, M. E. (2015). Tracking social contact networks with online respondent-driven detection: who recruits whom?. <i>BMC infectious diseases</i> , 15(1), 522.
Stewart 2015	No relevant outcomes	Stewart Jr, W. H., May, R. C., & Ledgerwood, D. E. (2015). Do you know what I know? Intent to share knowledge in the US and Ukraine. <i>Management International Review</i> , 55(6), 737-773.
Stockwell 2017	No relevant outcomes	Stockwell, M. S., Marchant, C. D., Wodi, A. P., Barnett, E. D., Broder, K. R., Jakob, K., ... & Sharma, D. (2017). A multi-site feasibility study to assess fever and wheezing in children after influenza vaccines using text messaging. <i>Vaccine</i> , 35(50), 6941-6948.
Tan 2017	Health condition not relevant	Tan, Q., Hildon, Z. J., Singh, S., Jing, J., Thein, T. L., Coker, R., ... & Leo, Y. S. (2017). Comparing patient and healthcare worker experiences during a dengue outbreak in Singapore: understanding the patient journey and the introduction of a point-of-care test (POCT) toward better care delivery. <i>BMC infectious diseases</i> , 17(1), 503.
Tengbeh 2018	No relevant outcomes	Tengbeh, A. F., Enria, L., Smout, E., Mooney, T., Callaghan, M., Ishola, D., ... & Lees, S. (2018). "We are the heroes because we are ready to die for this country": Participants' decision-making and grounded ethics in an Ebola vaccine clinical trial. <i>Social Science &amp; Medicine</i> , 203, 35-42.
Thomson 2019	Health condition not relevant	Thomson, R. M., Henderson, H. J., & Smith-Palmer, A. (2019). An outbreak of Salmonella Saintpaul in a Scottish childcare facility: the influence of parental under-reporting. <i>BMC infectious diseases</i> , 19(1), 847.
Tolia 2020	No relevant outcomes	Tolia, V. M., Chan, T. C., & Castillo, E. M. (2020). Preliminary Results of Initial Testing for Coronavirus (COVID-19) in the Emergency Department. <i>Western Journal of Emergency Medicine</i> , 21(3), 503.

van den Hof 2001	No relevant outcomes	van den Hof, S., Meffre, C. M., Conyn-van Spaendonck, M. A., Woonink, F., de Melker, H. E., & van Binnendijk, R. S. (2001). Measles outbreak in a community with very low vaccine coverage, the Netherlands. <i>Emerging infectious diseases</i> , 7(3 Suppl), 593.
Vasconcelos 1999	Health condition not relevant	da C Vasconcelos, P. F., Lima, J. W., Raposo, M. L., Rodrigues, S. G., Rosa, J. F., Amorim, S. M., ... & Rosa, A. P. (1999). Seroepidemiologic survey in Sao Luis Island, State of Maranhao, Brazil, during a dengue fever epidemics. <i>Revista da Sociedade Brasileira de Medicina Tropical</i> , 32(2).
Viveki 2012	Paper unavailable	Viveki, R. G., Halappanavar, A. B., Patil, M. S., Joshi, A. V., Gunagi, P., & Halki, S. B. (2012). Swine flu (H1N1 influenza): awareness profile of visitors of swine flu screening booths in Belgaum city, Karnataka. <i>Journal of the Indian Medical Association</i> , 110(6), 358-361.
Wang 2015	Health condition not relevant	Wang, Q., Brenner, S., Leppert, G., Banda, T. H., Kalmus, O., & De Allegri, M. (2015). Health seeking behaviour and the related household out-of-pocket expenditure for chronic non-communicable diseases in rural Malawi. <i>Health policy and planning</i> , 30(2), 242-252.
Yang 2012	No relevant outcomes	Yang, Z. J. (2012). Too scared or too capable? Why do college students stay away from the H1N1 vaccine?. <i>Risk Analysis: An International Journal</i> , 32(10), 1703-1716.
Yom-Tov 2015	No relevant outcomes	Yom-Tov, E., Johansson-Cox, I., Lamos, V., & Hayward, A. C. (2015). Estimating the secondary attack rate and serial interval of influenza-like illnesses using social media. <i>Influenza and other respiratory viruses</i> , 9(4), 191-199.
Zhang 2009	Health condition not relevant	Zhang, Q., Lauderdale, D., Mou, S., Parish, W. I., Laumann, E. O., & Schneider, J. (2009). Socioeconomic disparity in healthcare-seeking behavior among Chinese women with genitourinary symptoms. <i>Journal of Women's Health</i> , 18(11), 1833-1839.

