

Prehospitalization Proton Pump Inhibitor (PPI) use and Clinical Outcomes in COVID-19

Running title: PPI use and outcomes in COVID-19

Names of authors with address

- 1) *Preethi Ramachandran MD, MRCP, FRCPath
Brookdale University Hospital and Medical center
Brooklyn, NY 11212
Phone: 718.240.6206
Fax- 718.240.6516
Email: drpreethiram@hotmail.com

- 2) *Abhilash Perisetti, MD FACP
Department of Gastroenterology and Hepatology
University of Arkansas for Medical Sciences
Little Rock, AR, USA
Email: abhilash.perisetti@gmail.com

- 3) Mahesh Gajendran, MD, MPH, FACP
Texas Tech University, Paul L Foster School of Medicine
El Paso, Texas 79905, United States
Phone number: 915.215.8000
Fax Number: 915.612.9254
Email: mahesh.gajendran@ttuhsc.edu

- 4) Farla Jean-Louis, MD
Department of Internal Medicine
Brookdale University Hospital and Medical center
Brooklyn, NY 11212
Phone: 718.240.6206
Fax -718.240.6516
Email: fjean@bhmcny.org

- 5) Pardeep Bansal, MD FACG
⁵Chief and Program Director, Division of Gastroenterology,

Moses Taylor Hospital and Reginal Hospital of Scranton,
Scranton, PA, USA

Email: Pardeep79@yahoo.com

- 6) Alok Kumar Dwivedi, Ph.D.
Division of Biostatistics and Epidemiology
Department of Molecular and Translational Medicine
Texas Tech University, Paul L Foster School of Medicine
El Paso, Texas 79905, United States
Phone number: 915.215.4177
Fax Number: 915.215.6502
Email: alokkumardwivedi@gmail.com

- 7) Hemant Goyal, MD FACP
The Wright Center for Graduate Medical Education
501 S. Washington Avenue
Scranton, PA 18503
Office: 570.591.5175
Fax: 570.230.0013
Email: doc.hemant@yahoo.com

* Preethi Ramachandran and Abhilash Perisetti share equal authorship

Word count: 1251 words

Author contribution

Conception and design: Hemant Goyal

Formal Analysis: Mahesh Gajendran, Preethi Ramachandran

Literature search: Abhilash Perisetti, Mahesh Gajendran, Hemant Goyal

First draft: Abhilash Perisetti, Mahesh Gajendran, Preethi Ramachandran

Critical revision and editing: All authors

Final approval: All authors

Conflict of Interest and Ethical statement:

This manuscript, as submitted or its essence in another version is not under consideration for publication elsewhere and will not be published elsewhere while under review by the journal. The authors have no commercial associations or sources of support that might pose a conflict of interest. All authors have made substantive contributions to the study, and all authors endorse the data and conclusions

Acknowledgments- *None*

Corresponding author:

Hemant Goyal, MD FACP PGDCA (MBA)

The Wright Center for Graduate Medical Education

501 S. Washington Avenue

Scranton, PA 18505

Office: 570.591.5175

Fax: 570.230.0013

Email: doc.hemant@yahoo.com

Prehospitalization Proton Pump Inhibitor (PPI) use and Clinical Outcomes in COVID-19

Abstract

Background and Aim

Gastric acid has shown to neutralize many viruses. The working receptor of SARS-CoV-2 is angiotensin-converting enzyme-2 (ACE-2), which has shown to be omnipresent in the gastrointestinal tract. There is a theoretical concern that SARS-CoV-2 can escape the neutralization by gastric acid because of hypochlorhydria caused by the use of proton pump inhibitors (PPI) and can predispose the patients for severe COVID-19.

Methods

We studied the association between prehospitalization PPI use and clinical outcomes among hospitalized COVID-19 patients.

Results

In our study, 15.6% of hospitalized COVID-19 patients were on PPIs at home. Mortality among PPI-users was 2.3 times higher than non-users, along with 2.5 times higher risk of mechanical ventilation. This relationship existed even after adjusting for confounding variables.

Conclusion

These results warrant further investigation in prospective studies to evaluate if PPI-induced hypochlorhydria is associated with worse outcomes, including mortality because of the omnipresence of ACE-2 in the gastrointestinal tract.

Keywords: Proton pump inhibitors; PPI; COVID-19; SARS-CoV-2; gastrointestinal symptoms; outcomes; mortality.

Prehospitalization Proton Pump Inhibitor (PPI) use and Clinical Outcomes in COVID-19

Introduction

The Coronavirus Disease-2019 (COVID-19) is caused by severe acute respiratory syndrome coronavirus-2 (SARS-CoV-2) [1, 2]. Emerging evidence suggests that COVID-19 can also present with gastrointestinal (GI) symptoms, including nausea, vomiting, dysgeusia, diarrhea, and abdominal pain [2, 3, 4, 5, 6]. The Angiotensin-converting enzyme 2 (ACE2) has been identified as the receptor for the SARS-CoV-2 to enter the epithelial cells, and it is highly expressed throughout the GI system, including the gastric epithelium [6]. It is thought that gastric acid could neutralize the virus on ingestion, and there is a concern that decreased gastric acid secretion by proton pump inhibitors (PPI) could potentially increase the risk of GI symptoms and might increase severity in COVID-19 [7, 8]. Moreover, previous studies have shown that there is an increased risk of infections and all-cause mortality in patients with prolonged use of PPIs [9]. However, no study has determined an association between the history of PPI use and clinical outcomes, particularly mortality in COVID-19. We sought to evaluate the association between PPI and clinical outcomes among hospitalized COVID-19 patients.

Methods

It is a retrospective cohort study conducted on patients admitted with a principal diagnosis of COVID-19 in a tertiary care academic medical center in Brooklyn, New York, from March 1st to April 25th, 2020. Patients were excluded if they were younger than 18 years, who were not hospitalized and managed on an ambulatory basis, pregnant, unavailability of the results of SARS-CoV-2 nasopharyngeal testing, and missing data on mortality or disposition. Data related to patients' demographics, clinical symptoms, comorbidities, history of medications, vitals at presentation, admission laboratory tests, inpatient medications, and outcomes were collected.

In our study, the primary exposure of interest was the history of PPI use as a home medication. The home PPI use was determined based on the documentation of any type of PPI use (including omeprazole, esomeprazole, rabeprazole, pantoprazole, etc.) as an active home

medication at the time of admission. The study cohort was divided into two groups based on PPI use at home: COVID-19 patients on PPI (cases) and COVID-19 patients not on PPI (controls). The primary outcomes are all-cause mortality and mechanical ventilation. The secondary outcomes are septic shock and hospital length of stay.

Statistical analyses were performed using IBM SPSS software version 26 (SPSS Inc, Armonk, NY) and STATA 15.1 (StataCorp LLC, College Station, TX). Two models of multivariable logistic regression analysis were conducted for evaluating the effect of PPI use on the primary dichotomous outcome variables, death, and mechanical ventilation separately. In Model 1, we adjusted for any significant variables associated with PPI ($P < 0.05$) based on the univariate analysis. In Model 2, we performed the multivariable analysis based on clinically relevant confounders associated with outcome and PPI use (BMI, Age, HTN, Hyperlipidemia, CAD, DM, Cancer, COPD, aspirin, statin, smoker, gender, H2 blocker use). All the non-significant predictors were dropped from the final model and retained the maximum five variables to avoid any overfitting issue in the multivariable model. The effect size of PPI use obtained from logistic regression analyses was summarized using the odds ratio (OR) along with a 95% confidence interval (CI). P-values less than or equal to 5% were considered statistically significant results. We also performed subgroup analyses, according to essential cofactors, to examine the heterogeneity of PPI effects on mortality outcomes (Forest Plot).

The study was approved by the Institutional Review Board (Protocol 20-12) of Brookdale University.

Results

A total of 295 hospitalized COVID-19 patients formed our final study population. Of these, 15.6% (46/295) patients had documentation of any PPI use before admission (Figure 1). Baseline demographics, laboratory, and outcomes data are shown in table 1. We observed increased mortality in patients with a history of PPI compared to patients without PPI (34.8% vs. 16.2%, $P = 0.007$). The odds of mortality remained significantly higher in the PPI group compared to control (OR 2.3, 95% CI 1.1 – 4.8, $P = 0.03$) even after adjusting for potential factors in multivariate analysis (Table 2).

Furthermore, the odds of mechanical ventilation were also observed to be higher in cases when compared to controls after adjusting for potential confounders as well as predictors (OR 2.5, 95% CI 1.1–5.4, $P = 0.02$). The PPI use was associated with an increased odds of mortality in most subgroups of patients, as shown in the Forest Plot (Figure 2). The profound effect of PPI on mortality was observed in younger patients without cardiac risk factors (diabetes, hypertension, dyslipidemia, CAD) or Charlson’s comorbidity index of zero, suggesting that a history of PPI exacerbate prognosis even in patients without having underlying cardiac conditions.

Discussion

In our study, we found that 15.6% of hospitalized COVID-19 patients were on PPIs at home. PPI-users had more than two-fold higher risks of mortality and mechanical ventilation requirement than non-users, even after adjusting for potential confounding variables. Our subgroup analyses showed that PPI users had markedly worse prognosis in patients without underlying cardiac comorbidities.

PPIs predominately exert their effect by reducing gastric acid output via irreversible proton pump inhibition [10]. This profound hypochlorhydria can diminish the protective effect of gastric acid, which can theoretically increase the survival of SARS-CoV-2 in the stomach and invading the GI epithelial cells [1, 8, 11]. In the study by Xiao et al., viral host receptor ACE2 and viral nucleocapsid protein stained positive in the cytoplasm of GI epithelial cells suggesting that the SARS-CoV-2 virus invades the mucosal cells, multiply and produce virions [1]. In addition, the reduced acid output due to PPI can change the composition of the gut microbiome, which could increase enteric infections [9, 12, 13]. Furthermore, digestive symptoms such as altered taste, nausea, loss of appetite, and diarrhea are common in COVID-19 patients, and few studies reported worse outcomes with the presence of GI symptoms [2, 5]. In our study, the PPI group did not have higher GI symptoms compared to controls. It remains to be studied in prospective studies if individuals with long-term PPI users are more susceptible to manifest GI symptoms.

Although in our study, the PPI-group is associated with increased mortality after adjustment of potential confounders, these differences should be interpreted with caution as there could be

potential unrecognizable confounders. The biological plausibility of such association needs further elaboration, especially with changes in acid secretion and viral transmission through the GI tract. Further studies are urgently needed to evaluate the effect of pH changes in the infectivity of SARS-CoV-2. Regardless, these findings are vital and provide a roadmap for future studies to evaluate the effect of PPI use and outcomes in COVID-19.

Important limitations exist for this study. Our study is a single-center, retrospective, small-sized study which could introduce bias and limit its generalizability. Given the retrospective nature of the study, we could only include the information which was available in the medical records. We were unable to determine the information about the type, dose, duration, frequency, and compliance for the PPI use since we did not have access to the outpatient medical records. Lastly, potential unrecognized confounders could have been missed in our study. Despite these limitations, the main strength of the study is that it addresses a clinically significant issue about the implication of pre-hospitalization PPI use and COVID-19.

In conclusion, Pre-hospitalization PPI use is prevalent in COVID-19 infected patients and associated with increased mortality and MV support among hospitalized COVID-19 patients. The results of our study warrant further investigation to evaluate if PPI-induced acid suppression is associated with worse clinical outcomes primarily because of the omnipresence of ACE-2 in the GI tract.

References

- 1 Xiao F, Tang M, Zheng X, Liu Y, Li X, Shan H. Evidence for gastrointestinal infection of SARS-CoV-2. *Gastroenterology* 2020;158:1831-3. e3.
- 2 Pan L, Mu M, Yang P, Sun Y, Wang R, Yan J, *et al.* Clinical Characteristics of COVID-19 Patients With Digestive Symptoms in Hubei, China: A Descriptive, Cross-Sectional, Multicenter Study. *Am J Gastroenterol* 2020.
- 3 Perisetti A, Gajendran M, Boregowda U, Bansal P, Goyal H. COVID-19 and gastrointestinal endoscopies: current insights and emergent strategies. *Dig Endosc* 2020.
- 4 Aziz M, Perisetti A, Lee-Smith WM, Gajendran M, Bansal P, Goyal H, *et al.* Taste Changes (Dysgeusia) in COVID-19: A systematic review and metaanalysis. *Gastroenterology* 2020;0.

- 5 Aloysius M, Thatti A, Gupta A et al. COVID-19 presenting as acute pancreatitis. *Pancreatology* 2020.
- 6 Kopel J, Perisetti A, Gajendran M, Boregowda U, Goyal H. Clinical Insights into the Gastrointestinal Manifestations of COVID-19. *Dig Dis Sci* 2020.
- 7 Uno Y. Why does SARS-CoV-2 invade the gastrointestinal epithelium? *Gastroenterology* 2020.
- 8 Darnell ME, Subbarao K, Feinstone SM, Taylor DR. Inactivation of the coronavirus that induces severe acute respiratory syndrome, SARS-CoV. *J Virol Methods* 2004;121:85-91.
- 9 MacLaren R, Reynolds PM, Allen RR. Histamine-2 receptor antagonists vs proton pump inhibitors on gastrointestinal tract hemorrhage and infectious complications in the intensive care unit. *JAMA Intern Med* 2014;174:564-74.
- 10 Shin JM, Sachs G. Pharmacology of proton pump inhibitors. *Current gastroenterology reports* 2008;10:528-34.
- 11 Hamming I, Timens W, Bulthuis ML, Lely AT, Navis G, van Goor H. Tissue distribution of ACE2 protein, the functional receptor for SARS coronavirus. A first step in understanding SARS pathogenesis. *J Pathol* 2004;203:631-7.
- 12 Jackson MA, Goodrich JK, Maxan ME, Freedberg DE, Abrams JA, Poole AC, *et al.* Proton pump inhibitors alter the composition of the gut microbiota. *Gut* 2016;65:749-56.
- 13 Lombardo L, Foti M, Ruggia O, Chiecchio A. Increased incidence of small intestinal bacterial overgrowth during proton pump inhibitor therapy. *Clinical gastroenterology and hepatology : the official clinical practice journal of the American Gastroenterological Association* 2010;8:504-8.

Figure Legends:

Figure 1: Study flow diagram

Figure 2: Forest Plot showing the effects of PPI in each subgroup

Forest Plot indicates that PPI increased the odds of mortality regardless of any patient subgroups. It also shows that PPI increased the odds of mortality in patients who had CCI (at least 1 or higher) or received statin. Even patients without having cardiac risk factors (DM, HTN, HLD, and CAD) or CCI of zero had a higher odds of mortality if they received PPI. PPI did not increase the odds of mortality only among patients who had asthma, received ACE-ARB, and did not receive a statin.

Footnotes:

BMI: Body mass index; HTN: Hypertension; HLD: Hyperlipidemia; CAD: Coronary artery disease; DM: Diabetes mellitus; COPD: Chronic obstructive pulmonary disease; CCI: Charlson's comorbidity index; CVD: Cardiovascular disease; ACE-ARB: Angiotensin-converting enzymes inhibitors- angiotensin II receptor blockers; NSAIDs: Nonsteroidal anti-inflammatory drugs; ASA: Aspirin; OR: odds ratio.

Table 1: Baseline characteristics, laboratory findings and clinical outcomes of the study population [€]

Characteristic	PPI Group N=46 N (%)	No-PPI group N=249 N (%)	P-value
Baseline Demographics			
Age, median (IQR)	67 (57.3, 76.5)	65 (54, 74)	0.38
Age > 60 years	32 (69.6)	164 (65.9)	0.74
Female gender	21 (45.7)	112 (45)	0.91
BMI, mean (SD)	27.3 (25.3, 32.4)	29.3 (26.3, 34.9)	0.008
Race			0.94
• White	2 (4.3)	7 (2.8)	
• African American	33 (71.7)	175 (70.3)	
• Hispanic	5 (10.9)	34 (13.7)	
• Asian	2 (4.3)	8 (3.2)	
• Unknown	4 (8.7)	25 (10)	
Charlson's Comorbidity Index			0.15
• Zero	3 (6.5)	44 (17.7)	
• One	9 (19.6)	34 (13.7)	
• Two	10 (21.7)	67 (26.9)	
• Three or more	24 (52.2)	104 (41.8)	
Comorbidities			
• Hypertension	39 (84.8)	170 (68.3)	0.02
• Dyslipidemia	24 (52.2)	73 (29.3)	0.004
• CAD	14 (30.4)	31 (12.4)	0.004
• DM	27 (58.7)	105 (42.2)	0.052
• Cancer	6 (13)	14 (5.6)	0.1
• COPD	10 (21.7)	17 (6.8)	0.004
• Asthma	7 (15.2)	37 (14.9)	1
Immunocompromised Status	5 (10.9)	19 (7.6)	0.56
Smoker	9 (19.6)	23 (9.5)	0.07
Medications			
• ACEI/ARB	17 (37)	76 (30.5)	0.61
• NSAID	10 (21.7)	35 (14.6)	0.27
• Aspirin	22 (47.8)	66 (27.5)	0.009
• Statin	33 (71.7)	81 (33.8)	<0.001
Symptoms			
Cough	24 (52.2)	154 (61.8)	0.25
• Fever	24 (52.2)	153 (61.4)	0.47
• Dyspnea	28 (60.9)	174 (69.9)	0.23

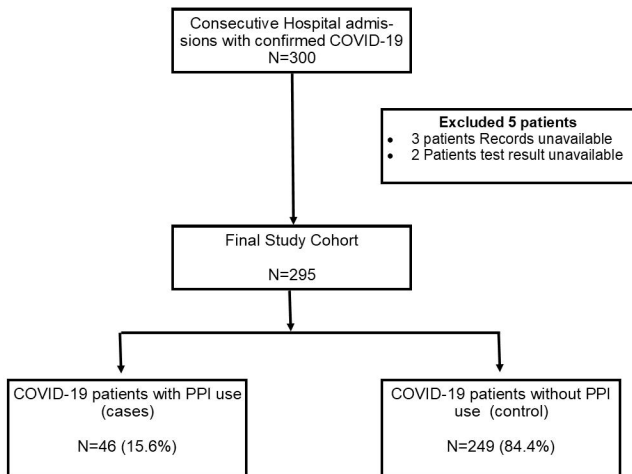
• Fatigue	15 (32.6)	96 (38.6)	0.51
• Myalgia	10 (21.7)	68 (27.3)	0.47
• GI symptom	7 (15.2)	46 (18.5)	0.68
Laboratory Findings			
Anemia	24 (52.2)	110 (44.4)	0.34
Leukocytosis	10 (21.7)	61 (24.6)	0.85
Lymphopenia	21 (45.7)	148 (59.7)	0.1
Thrombocytopenia	12 (26.1)	49 (19.8)	0.33
Elevated Creatinine	25 (54.3)	85 (34.6)	0.01
Hypoalbuminemia	14 (30.4)	66 (26.6)	0.59
Elevated Lactate*	21 (53.8)	76 (38)	0.08
Elevated LDH*	37 (100)	215 (99.5)	
Elevated CRP*	15 (45.5)	111 (54.1)	0.45
Elevated AST	11 (36.7)	47 (40.9)	0.84
Elevated ALT	5 (16.7)	16 (13.9)	0.77
Elevated Bilirubin	3 (10)	9 (7.8)	0.71
Elevated Alkaline Phosphatase	7 (23.3)	13 (11.3)	0.13
Clinical Outcomes			
Shock	16 (34.8)	77 (30.9)	0.61
Mechanical Ventilation	12 (26.1)	37 (14.9)	0.16
Mortality	16 (34.8)	40 (16.2)	0.007
Length of stay, median (IQR)	7 (4,10)	6 (4,10)	0.48

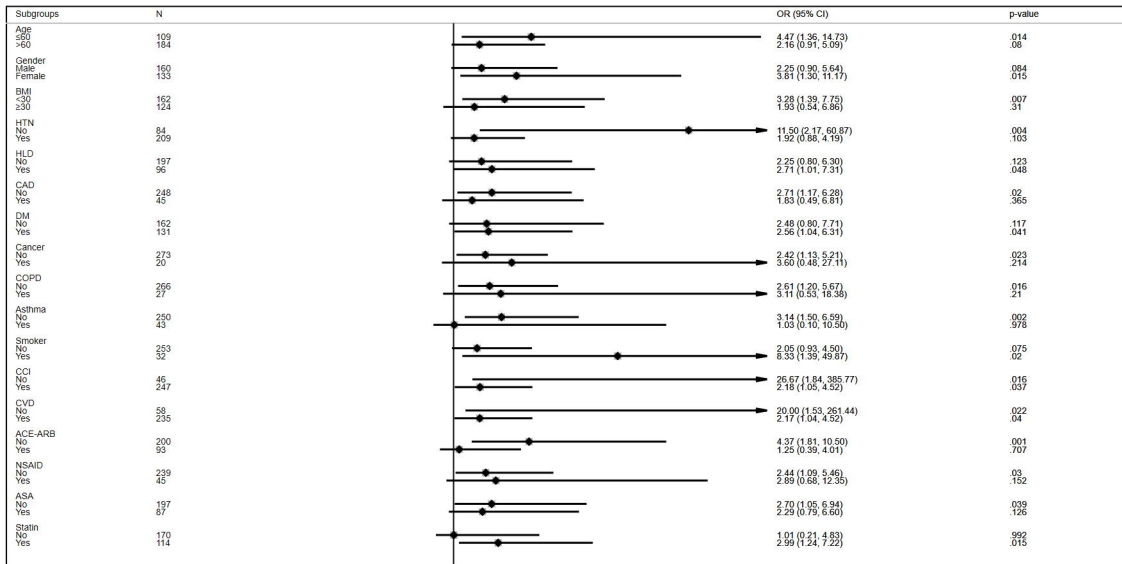
€ Non-parametric test (Mann-Whitney test) used for non-normal distributed continuous variable; SD- standard deviation; IQR- interquartile range * Lactate 14% missing values; LDH 19% missing values; CRP 19% missing values

Table 2: Adjusted effects of PPI use on mortality and mechanical ventilation outcomes

In-hospital Mortality				
	Odds Ratio	95% Confidence Interval		P-value
Multivariable Analysis Model 1				
Home PPI use	2.24	1.07	4.71	0.033
CCI	1.01	0.82	1.24	0.921
BMI	1.01	0.97	1.05	0.547
Home statin use	1.59	0.84	3.02	0.157
Multivariable Analysis Model 2				
Home PPI use	2.33	1.13	4.83	0.022
Diabetes Mellitus	2.15	1.15	4.01	0.016
Cancer	4.1	1.52	11.09	0.005
Female gender	0.56	0.3	1.06	0.075
Mechanical Ventilation				
Multivariable Analysis Model 1				
Home PPI use	2.21	1.00	4.90	0.051
BMI	1.04	1.00	1.08	0.063
CAD	2.62	1.11	6.21	0.028
CCI	0.79	0.63	1.00	0.055
Multivariable Analysis Model 2				
Home PPI use	2.49	1.14	5.43	0.022
BMI	1.06	1.02	1.1	0.004
Female gender	0.51	0.26	1.01	0.053

PPI: Proton Pump Inhibitor; BMI: Body Mass Index; CAD: Coronary Artery Disease; CCI: Charlson's comorbidity Index; IPW: inverse probability weighting; Model 1 adjusted only important variables associated with the outcome; Model 2 adjusted for all significant confounders associated with outcome.





-10

1

15