

1 **ABSTRACT**

2 **Background** *KRAS* is a key oncogenic driver in lung adenocarcinoma (LUAD).

3 Chromatin-remodeling gene *SMARCA4* was co-mutated with *KRAS* in LUAD; however,
4 the impact of *SMARCA4* mutations on clinical outcome has not been adequately
5 established. This study sought to shed light on the clinical significance of *SMARCA4*
6 mutations in LUAD.

7 **Methods** The association of *SMARCA4* mutations with survival outcomes was
8 interrogated in 4 independent cohorts totaling 564 patients: *KRAS*-mutant patients with
9 LUAD who received non-immunotherapy treatment from 1) The Cancer Genome Atlas
10 (TCGA) and 2) the MSK-IMPACT Clinical Sequencing (MSK-CT) cohorts; and *KRAS*-
11 mutant patients with LUAD who received immune checkpoint inhibitor-based
12 immunotherapy treatment from 3) the MSK-IMPACT (MSK-IO) and 4) the Wake Forest
13 Baptist Comprehensive Cancer Center (WFBCCC) immunotherapy cohorts.

14 **Results** Of the patients receiving non-immunotherapy treatment, in the TCGA cohort
15 (n=155), *KRAS*-mutant patients harboring *SMARCA4* mutations (KS) showed poorer
16 clinical outcome ($P=6e-04$ for disease-free survival (DFS) and .031 for overall survival
17 (OS), respectively), compared to *KRAS-TP53* co-mutant (KP) and *KRAS*-only mutant (K)
18 patients; in the MSK-CT cohort (n=314), KS patients also exhibited shorter OS than KP
19 ($P=.03$) or K ($P=.022$) patients. Of patients receiving immunotherapy, KS patients
20 consistently exhibited the shortest progression-free survival (PFS; $P=.0091$) in the MSK-
21 IO (n=77), and the shortest PFS ($P=.0026$) and OS ($P=0.0014$) in the WFBCCC (n=18)
22 cohorts, respectively.

- 1 **Conclusions** mutations of *SMARCA4* represent a genetic factor that lead to adverse
- 2 clinical outcome in lung adenocarcinoma treated by either non-immunotherapy or
- 3 immunotherapy.
- 4

1 **BACKGROUNDS**

2 Lung cancer is the leading cause of cancer-related death worldwide, with 5-year
3 survival rates of ~18%. Non-small cell lung cancer (NSCLC) comprises 85% of all lung
4 cancer cases, mainly including adenocarcinoma (LUAD), squamous cell carcinoma
5 (LUSC), and large cell carcinoma. Great strides have been made in recent years with
6 the development of immune checkpoint inhibitor treatment targeting PD-1/PD-L1
7 mediated immunosuppression, which have shown efficacy in up to 30% of NSCLC
8 patients [1-6]. Expression of PD-1/PD-L1 was reported to be associated with enhanced
9 benefits from immunotherapy, but debates exist because of discordant results across
10 different studies [1, 2, 4-11]. Currently, a higher tumor mutation burden (TMB) is
11 undergoing evaluation as a predictive biomarker in many tumor types [7, 12-14].

12 The mutations in *KRAS* are a common oncogenic driver in ~20% NSCLC [15, 16]. The
13 goal of developing specific therapeutic strategies for the *KRAS*-mutant patients has thus
14 far proven elusive. For example, *KRAS* mutations are associated with shortest survivals
15 in NSCLC patients treated with carboplatin plus paclitaxel as well as single anti-EGFR
16 TKI agent [17]. Recently, it was shown that *STK11/LKB1* or *TP53* co-mutations can
17 stratify *KRAS*-mutant LUAD patient into different subgroups with distinct biology,
18 therapeutic vulnerabilities and immune profiles [18], and immunotherapy response [19].

19 The SWItch/Sucrose NonFermentable (SWI/SNF) complex is a major chromatin
20 remodeling complex that controls DNA accessibility to transcriptional factors and
21 regulates transcriptional programming [20]. Genomic alterations in the components of
22 the SWI/SNF chromatin remodeling complex have been identified in multiple types of
23 cancers [21]. A recent study reported that mutations in the chromatin remodeling gene

1 *PBRM1* were associated with response to immunotherapy through IFN- γ signaling
2 pathway, a key effector for antitumor T cell function, in clear cell renal cell carcinoma
3 [22, 23]. Mutations in the *PBRM1* in NSCLC is rare; however, mutations in the
4 *SMARCA4* gene occur frequently in NSCLC [16, 24] and tended to co-occur with *KRAS*
5 mutations [16]. One recent study showed that *SMARCA4* acted as a tumor suppressor
6 by cooperating with p53 loss and Kras activation, and *SMARCA4*-mutant tumors were
7 sensitive to inhibition of oxidative phosphorylation [25]. Another study showed that the
8 reduced expression of *SMARCA4* contributes to poor outcomes in lung cancer [26].
9 However, the prognostic values of *SMARCA4* mutations in *KRAS*-mutant LUAD patients
10 who received either non-immunotherapy or immunotherapy treatment have not been
11 well defined.

12 In this study, we evaluated the prognostic value of *SMARCA4* mutations in *KRAS*-
13 mutant LUAD within four independent cohorts consisting of patients received non-
14 immunotherapy or immunotherapy treatment.

15

16

17 **METHODS**

18 For the Cancer Genome Atlas (TCGA) cohort, matched somatic mutation, gene
19 expression and clinical data of 560 patients with LUAD were retrieved. We obtained the
20 clinical and somatic mutation data of 62 principal tumor types for MSK-IMPACT Clinical
21 Sequencing Cohort and extracted the data of LUAD patients [27]. We excluded patients
22 who received immunotherapy treatment indicated in their later publication [14] (as the

1 MSK-IO cohort including 186 patients) to establish an MSK-CT cohort of 1033 patients
2 received non-immunotherapy treatment.

3 We extracted the 127 LUAD patients who were treated with immunotherapy between
4 March 1, 2015 and November 30, 2017 at the Wake Forest Baptist Comprehensive
5 Cancer Center (WFBCCC) immune-oncology program. Efficacy was assessed by the
6 treating physician and categorized according to RECIST guidelines [28] and defined as
7 durable clinical benefit (DCB; complete response [CR]/partial response [PR] or stable
8 disease [SD] that lasted > 6 months) or no durable benefit (NDB, PD or SD that lasted ≤
9 6 months). Progression-free survival (PFS) was defined as the time from the date of
10 initial immunotherapy administration to the date of progression or death, and overall
11 survival (OS) was to the date of death or last follow-up, respectively. If the patient was
12 alive at the date of last contact, his/her data were censored at that time point. Genomic
13 profiles were available for 39 patients who were enrolled into the Wake Forest Precision
14 Oncology Initiative (ClinicalTrials.gov Identifier: NCT02566421).

15 Only patients harboring *KRAS* mutations and with survival data were included in the
16 study, resulting in 155 (27.7% of 560) and 314 (30.4% of 1033) patients received non-
17 immunotherapy treatment in the TCGA and MSK-CT cohorts, and 77 (41.4% of 186)
18 and 18 (46.2% of 39) patients received immunotherapy treatment in the MSK-IO and
19 the WFBCCC cohorts.

20 **Statistical Analysis**

21 Tests used to analyze clinical and genomic data included the Mann-Whitney U test
22 (two-group comparisons), χ^2 test (three-group comparisons), Fisher's exact test

1 (proportion comparisons). Survival curves were estimated using Kaplan-Meier
2 methodology and compared between two groups using the log-rank test and Cox
3 proportional hazards regression analysis. Hazard ratios (HRs) and 95% CIs were
4 generated by Cox proportional hazards models where $P < .05$ and these statistics were
5 estimable (i.e., when at least one event occurred in both groups being compared). All
6 analyses were performed using R software, version 3.2.1.

7

8

9 **RESULTS**

10 ***SMARCA4* Mutations are Associated with Shorter Survival of Patients Who** 11 **Received Non-immunotherapy Treatment**

12 *KRAS* is one of the most frequently mutated genes in LUAD, which occur in 155 (30%)
13 patients in the TCGA cohort. These patients were representative of the overall LUAD
14 cohort with median patient age of 67 years (range 33-87) and high percentage of
15 current/former smokers (94.8%). 5.8% (9) of the *KRAS*-mutant patients harbored
16 *SMARCA4* mutations in the TCGA cohort and were classified as KS; 33.5% (52)
17 patients harbored *TP53* mutations and were classified as the KP subgroup; and 60.6%
18 (94) patients did not carry *SMARCA4* or *TP53* mutations and were classified as K
19 **(Supplementary Figure 1)**. The *SMARCA4* mutations were not associated with any
20 risk factors such as age at diagnosis, tumor stage, race/ethnicity or smoking history
21 **(Supplementary Table 1)**.

1 Disease-free survival (DFS) differed between the three groups ($P=6e-4$), with
2 significantly shorter DFS for patients in the KS subgroup compared to either KP (HR
3 4.47, 95% CI 1.52-13.22, $P=.003$) or K (HR 2.43 95% CI 1.46-4.05, $P=1.2e-4$) patients
4 in pair-wise comparisons (**Figure 1A**). In contrast, KP and K patient had similar DFS
5 ($P=.64$). We also compared the survivals between KS (*SMARCA4*-mutant) and KP+K
6 (*SMARCA4*-wildtype) patients, and found that KS patients exhibited significantly shorter
7 DFS (HR 5.34 95% CI 2.05-14.14, $P=1.3e-4$) (**Figure 1B**).

8 Overall survival (OS) also varied significantly between the three groups ($P=.031$). The
9 KS patients exhibited shorter DFS than the K subgroup (HR 1.63, 95% CI 1.05-2.55,
10 $P=.024$). Although the difference of OS between KS and KP was not significant ($P=.21$),
11 the median OS in KS was 15.37 months compared to 18.48 months in KP (**Figure 1C**).
12 In addition, the two-group comparison showed significantly shorter OS in KP
13 (*SMARCA4*-mutant) compared to K+KP (*SMARCA4*-wildtype) patients (HR 2.32, 95%
14 CI 1.01-5.44, $P=.047$) (**Figure 1D**).

15 We validated these observations in an independent MSK-CT cohort [27], consisting of
16 314 *KRAS*-mutant patients. High percentage of current/former smokers (78.0%) were
17 also observed. Across the entire cohort, 10.8% (34) patients were classified as KS, 34.1%
18 (107) were KP and 55.1% (173) were K (**Supplementary Figure 1 and Table 2**).

19 Significantly shorter OS were observed for patients with KS compared to K (HR 1.39, 95%
20 CI 1.04-1.85, $P=.022$) or KP (HR 1.94, 95% CI 1.06-3.57, $P=.03$) (**Figure 2A**), and K
21 and KP have similar OS ($P=.99$). In the two-group comparison, OS was significantly
22 shorter in KS (*SMARCA4*-mutant) compared to K+KP (*SMARCA4*-wildtype) patients
23 (HR 1.95, 95% CI 1.13-3.38, $P=.015$) (**Figure 2B**).

1 **SMARCA4 Mutations are Associated with Shorter Survival of Patients Who** 2 **Received Immunotherapy Treatment**

3 We then examined whether *SMARCA4* mutations impacted *KRAS*-mutant patient
4 response to immunotherapy. 77 LUAD patients harboring *KRAS* mutations were
5 extracted from the MSK-IO cohort [14]. The median age of patients was 68 (range 37-
6 86) and the majority (93.5%) was ever smokers. Based on *SMARCA4* and *TP53*
7 mutation status, 11.7% (9) tumors were classified as KS, 32.5% (25) were KR, and 55.8%
8 (43) were K. Demographic and clinical characteristics were generally well balanced
9 between the co-mutation defined groups. The clinical benefit rates to immunotherapy in
10 KS, KP and K groups was not significantly different ($P=.42$), probably due to the small
11 sample size; however, smaller proportion of KS patients (2/9=22.2%) achieved durable
12 clinical benefit (DCB) than KP (10/23=43.5%) or K (13/43=30.2%) patients.

13 **(Supplementary Figure 1 and Table 3).**

14 Significantly different PFS was observed between the three groups ($P=.0091$). The KS
15 patients exhibited the shorter PFS compared to KP (HR 2.82, 95% CI 1.17-6.81, $P=.016$)
16 tumors in pair-wise comparisons. Although the difference of PFS between KS and K
17 was not significant ($P=.18$), the median OS in KS was 1.73 months compared to 2.77
18 months in KP. Interestingly, KP patients exhibited longer survival than K patients (HR
19 0.48, 95% CI 0.26-0.86, $P=.012$) (**Figure 3A**). We merged the KP and K patients to test
20 the difference between *SMARCA4*-mutant and wildtype patients. *SMARCA4*-mutant (KS)
21 patients exhibit significantly shorter PFS than wildtype (K+KP) patients (HR 2.15, 95%
22 CI 1.46-4.35, $P=.048$, median PFS 1.73 vs. 4.22 months) (**Figure 3B**).

1 We also validated the prognostic values of *SMARCA4* mutations in *KRAS*-mutant LUAD
2 patients upon immunotherapy using 18 patient samples from the WFBCCC. Patients
3 were classified into KS (11.1%), KR (44.4%) and K (44.4%) subgroups
4 (**Supplementary Figure 1 and Table 4**). In this small cohort, the clinical benefit rates to
5 checkpoint inhibitor-based immunotherapy in KS, KP and K groups were significantly
6 different ($P=.03$). KS patients were resistant to treatment, while KP patients were mostly
7 sensitive.

8 The three groups of *KRAS*-mutant LUAD patients exhibited significantly different OS
9 ($P=.042$) and PFS ($P=.0014$). The KS patients exhibited the shortest OS and PFS
10 compared to either KR (HR 2.46, 95% CI 1.05-6.61, $P=.0019$ and $P=.0019$ with HR and
11 95% CI evaluable) and K (HR 2.46, 95% CI 1.01-6.61, $P=.042$ and HR 3.06, 95% CI
12 1.03-10.28, $P=.029$) patients in pair-wise comparisons (**Figures 4A and 4C**). Further
13 significantly decreased OS and PFS was observed in KS (*SMARCA4*-mutant) patients
14 compared to K+KP (wildtype) ones (HR 11.98, 95% CI 1.66-26.6, $P=.0018$ and HR 18.7,
15 95% CI 1.65-21.6, $P=.0011$) (**Figures 4B and 4D**), consistent with the observations in
16 the MSK-IO cohort. Altogether, these data indicated that *SMARCA4* abrogation likely
17 determines immunotherapy resistance in *KRAS*-mutant LUAD.

18 ***SMARCA4* Mutations are Significantly Enriched among Tumors with** 19 **Immunosuppressive Tumor Microenvironment**

20 We interrogated the composition of immune cells in the tumor microenvironment of
21 patients from the TCGA cohort which has RNA-seq data available. Using CIBERSOFT
22 [29] to quantify the proportion of each individual immune cell type, we found that KS
23 patients had significantly lower estimated proportions of CD8 and activated CD4

1 memory T cells than either K ($P=.015$ and $.035$) or KS ($P=.043$ and $.023$), while no
2 differences between KP and K patients ($P=.66$ and $.35$), indicating an
3 immunosuppressive tumor microenvironment in the KS patients (**Figure 5 and**
4 **Supplementary Figure 2**).

5 **DISCUSSION**

6 Alterations in chromatin remodeling complex, SWI/SNF, including *SMARCA4*, have
7 been found in NSCLC [16, 24, 30, 31]. In this study, we interrogated the clinical
8 significance of *SMARCA4* mutations in *KRAS*-mutant LUAD in the TCGA and the MSK-
9 CT cohorts in the absence of immunotherapy and the MSK-IO and the WFBCCC
10 cohorts who received immunotherapy. Our analysis indicates that genomic alterations in
11 the chromatin remodeling gene, *SMARCA4*, as a negative prognostic factor to *KRAS*-
12 mutant LUAD patients no matter received non-immunotherapy or immunotherapy
13 treatment. The mutations may induce an immunosuppressive tumor environment by
14 modulating the immune cell components. Although the completed determinants of
15 response to treatment is not yet completed defined, our study suggests that non-
16 immunotherapy and immune checkpoint inhibitor-based immunotherapy treatment may
17 not benefit this subset of patients.

18 More frequent *KRAS* mutations were observed in ever smokers than that occurred in
19 never smokers [24, 32-34], and associated with a significant increase of TMB [35].
20 Previous studies indicated that a subset of *KRAS*-mutant NSCLC patients may have a
21 better response to immunotherapy treatment [2, 35, 36]. We determined that KP
22 patients exhibited better survival than KS and K patients when receiving immune
23 checkpoint inhibitor-based immunotherapy, which is consistent with previous report [35].

1 The underlying mechanism may be that KP patients contained the largest proportion of
2 CD8 and activated CD4 memory T cells, supporting by previous report that *TP53* and
3 *KRAS* mutations had remarkable effects on increasing *PD-L1* expression, facilitating T-
4 cell infiltration and augmenting tumor immunogenicity [35].

5 *SMARCA4* inactivation was shown to promotes NSCLC aggressiveness by altering
6 chromatin organization [30], and the reduced expression of *SMARCA4* contributes to
7 poor outcomes in lung cancer [26]. Here we showed that *SMARCA4-KRAS* co-mutant
8 patients (KS) exhibited poorer survival of patients who received either non-
9 immunotherapy or immunotherapy treatment. On the other hand, quantitative IHC for
10 BRG1 can capture *SMARCA4*-deficient tumor [37, 38] which is associated with
11 *SMARCA4* mutations (**Supplementary Figure 3**). Therefore, evaluation of BRG1
12 expression by IHC may further enhance the predictive utility for non-immunotherapy or
13 immunotherapy treatment to NSCLC.

14 *SMARCA4* mutation is a unique biomarker for the stratification of *KRAS*-mutant patients
15 with LUAD. *SMARCA4* mutations are not associated with other factors such as
16 *STK11/LKB1* mutations, which can stratify *KRAS*-mutant LUAD into different subgroups
17 with distinct biology, therapeutic vulnerabilities and immune profiles [18] and
18 immunotherapy response [19], because mutations in *SMARCA4* and *STK11/LKB1* did
19 not co-occur in *KRAS*-mutant patients receiving immunotherapy treatment in the MSK-
20 IO ($P=0.065$) or WFBCCC ($P=0.41$) cohorts. In addition, *STK11* mutations did not serve
21 as a prognostic marker for patients who received non-immunotherapy treatment [19, 39-
22 41].

1 For these patients harboring both *KRAS* and *SMARCA4* mutations, an alternative
2 treatment strategy is required. A clinical study showed that cisplatin-based
3 chemotherapy benefited NSCLC patients with low *SMARCA4* expression [26]. Another
4 report indicated the activity of *AURKA*, which encodes a cell-cycle regulated kinase,
5 was essential in NSCLC cells lacking *SMARCA4*, and the inhibition/depletion of *AURKA*
6 enabled apoptosis and cell death *in vitro* and in xenograft mouse models [42]. Moreover,
7 a recent study indicated that *SMARCA4*-deficient lung cells and xenograft tumors
8 displayed marked sensitivity to inhibition of oxidative phosphorylation [25]. All
9 observations suggested encouraging treatment strategies but need further testing in
10 clinics.

11 **CONCLUSIONS**

12 We provide evidence that *SMARCA4* mutations are associated with poor clinical
13 survival outcomes of *KRAS*-mutant LUAD patients. If confirmed in additional cohorts, it
14 is likely that future prediction models will need to include *SMARCA4* mutations.

15 **ABBREVIATIONS**

16 **LUAD:** Lung adenocarcinoma

17 **KS:** *KRAS*-*SMARCA4* co-mutant

18 **KP:** *KRAS*-*TP53* co-mutant

19 **K:** *KRAS*-only mutant

20 **LUSC:** Lung squamous carcinoma

21 **NSCLC:** Non-small cell lung cancer

- 1 **TCGA:** The Cancer Genome Atlas (TCGA)
- 2 **MSK-CT:** the MSK-IMPACT Clinical Sequencing cohort
- 3 **MSK-IO:** MSK-IMPACT cohort
- 4 **WFBCCC:** the Wake Forest Baptist Comprehensive Cancer Center
- 5 **DCB:** durable clinical benefit

1 **Acknowledgement**

2 W.Z. is supported by the Hanes and Willis Professorship in Cancer and a Fellowship
3 from the National Foundation for Cancer Research. B.P. is supported by the Charles L.
4 Spurr Professorship Fund. We thank Dr. Matthew S. Hellman at the MSKCC for helpful
5 discussion of the results especially in regard to the MSK-IO cohort. We also
6 acknowledge the editorial assistance of Karen Klein, MA, in the Wake Forest Clinical
7 and Translational Science Institute, and Dr. Mac Robinson at the WFBCCC.

8 **Funding**

9 The work is supported by the Cancer Center Support Grant to the Comprehensive
10 Cancer Center of Wake Forest Baptist Medical Center (P30CA012197).

11 **Availability of data and materials**

12 All relevant data and materials within this work are made available in this manuscript or
13 previously published.

14 **Authors' contributions**

15 All authors have participated in drafting, reading, and approving the final manuscript.

16 **Competing interests**

17 The authors declare that they have no competing interests.

18 **Consent for publication**

19 Not applicable.

20 **Ethics approval and consent to participate**

1 Approval for the FoundationOne test were obtained from the ethics committee.

2

1 References

- 2 1. Garon EB, Rizvi NA, Hui R, Leighl N, Balmanoukian AS, Eder JP, Patnaik A, Aggarwal C,
3 Gubens M, Horn L *et al*: **Pembrolizumab for the treatment of non-small-cell lung**
4 **cancer**. *N Engl J Med* 2015, **372**(21):2018-2028.
- 5 2. Borghaei H, Paz-Ares L, Horn L, Spigel DR, Steins M, Ready NE, Chow LQ, Vokes EE, Felip
6 E, Holgado E *et al*: **Nivolumab versus Docetaxel in Advanced Nonsquamous Non-Small-**
7 **Cell Lung Cancer**. *N Engl J Med* 2015, **373**(17):1627-1639.
- 8 3. Brahmer J, Reckamp KL, Baas P, Crino L, Eberhardt WE, Poddubskaya E, Antonia S,
9 Pluzanski A, Vokes EE, Holgado E *et al*: **Nivolumab versus Docetaxel in Advanced**
10 **Squamous-Cell Non-Small-Cell Lung Cancer**. *N Engl J Med* 2015, **373**(2):123-135.
- 11 4. Fehrenbacher L, Spira A, Ballinger M, Kowanetz M, Vansteenkiste J, Mazieres J, Park K,
12 Smith D, Artal-Cortes A, Lewanski C *et al*: **Atezolizumab versus docetaxel for patients**
13 **with previously treated non-small-cell lung cancer (POPLAR): a multicentre, open-label,**
14 **phase 2 randomised controlled trial**. *Lancet* 2016, **387**(10030):1837-1846.
- 15 5. Herbst RS, Baas P, Kim DW, Felip E, Perez-Gracia JL, Han JY, Molina J, Kim JH, Arvis CD,
16 Ahn MJ *et al*: **Pembrolizumab versus docetaxel for previously treated, PD-L1-positive,**
17 **advanced non-small-cell lung cancer (KEYNOTE-010): a randomised controlled trial**.
18 *Lancet* 2016, **387**(10027):1540-1550.
- 19 6. Reck M, Rodriguez-Abreu D, Robinson AG, Hui R, Czoszi T, Fulop A, Gottfried M, Peled N,
20 Tafreshi A, Cuffe S *et al*: **Pembrolizumab versus Chemotherapy for PD-L1-Positive Non-**
21 **Small-Cell Lung Cancer**. *N Engl J Med* 2016, **375**(19):1823-1833.
- 22 7. Carbone DP, Reck M, Paz-Ares L, Creelan B, Horn L, Steins M, Felip E, van den Heuvel
23 MM, Ciuleanu TE, Badin F *et al*: **First-Line Nivolumab in Stage IV or Recurrent Non-**
24 **Small-Cell Lung Cancer**. *N Engl J Med* 2017, **376**(25):2415-2426.
- 25 8. Rittmeyer A, Barlesi F, Waterkamp D, Park K, Ciardiello F, von Pawel J, Gadgeel SM, Hida
26 T, Kowalski DM, Dols MC *et al*: **Atezolizumab versus docetaxel in patients with**
27 **previously treated non-small-cell lung cancer (OAK): a phase 3, open-label,**
28 **multicentre randomised controlled trial**. *Lancet* 2017, **389**(10066):255-265.
- 29 9. Tumeh PC, Harview CL, Yearley JH, Shintaku IP, Taylor EJ, Robert L, Chmielowski B,
30 Spasic M, Henry G, Ciobanu V *et al*: **PD-1 blockade induces responses by inhibiting**
31 **adaptive immune resistance**. *Nature* 2014, **515**(7528):568-571.
- 32 10. Herbst RS, Soria JC, Kowanetz M, Fine GD, Hamid O, Gordon MS, Sosman JA, McDermott
33 DF, Powderly JD, Gettinger SN *et al*: **Predictive correlates of response to the anti-PD-L1**
34 **antibody MPDL3280A in cancer patients**. *Nature* 2014, **515**(7528):563-567.
- 35 11. Liu L, Ruiz J, O'Neill SS, Grant SC, Petty WJ, Yang M, Chen K, Topaloglu U, Pasche B,
36 Zhang W: **Favorable outcome of patients with lung adenocarcinoma harboring POLE**
37 **mutations and expressing high PD-L1**. *Mol Cancer* 2018, **17**(1):81.
- 38 12. Rizvi NA, Hellmann MD, Snyder A, Kvistborg P, Makarov V, Havel JJ, Lee W, Yuan J, Wong
39 P, Ho TS *et al*: **Cancer immunology. Mutational landscape determines sensitivity to PD-**
40 **1 blockade in non-small cell lung cancer**. *Science* 2015, **348**(6230):124-128.

- 1 13. Van Allen EM, Miao D, Schilling B, Shukla SA, Blank C, Zimmer L, Sucker A, Hillen U,
2 Foppen MHG, Goldinger SM *et al*: **Genomic correlates of response to CTLA-4 blockade**
3 **in metastatic melanoma**. *Science* 2015, **350**(6257):207-211.
- 4 14. Rizvi H, Sanchez-Vega F, La K, Chatila W, Jonsson P, Halpenny D, Plodkowski A, Long N,
5 Sauter JL, Rekhtman N *et al*: **Molecular Determinants of Response to Anti-Programmed**
6 **Cell Death (PD)-1 and Anti-Programmed Death-Ligand 1 (PD-L1) Blockade in Patients**
7 **With Non-Small-Cell Lung Cancer Profiled With Targeted Next-Generation Sequencing**.
8 *Journal of clinical oncology : official journal of the American Society of Clinical Oncology*
9 2018, **36**(7):633-641.
- 10 15. Imielinski M, Berger AH, Hammerman PS, Hernandez B, Pugh TJ, Hodis E, Cho J, Suh J,
11 Capelletti M, Sivachenko A *et al*: **Mapping the hallmarks of lung adenocarcinoma with**
12 **massively parallel sequencing**. *Cell* 2012, **150**(6):1107-1120.
- 13 16. Cancer Genome Atlas Research N: **Comprehensive molecular profiling of lung**
14 **adenocarcinoma**. *Nature* 2014, **511**(7511):543-550.
- 15 17. Eberhard DA, Johnson BE, Amler LC, Goddard AD, Heldens SL, Herbst RS, Ince WL, Janne
16 PA, Januario T, Johnson DH *et al*: **Mutations in the epidermal growth factor receptor**
17 **and in KRAS are predictive and prognostic indicators in patients with non-small-cell**
18 **lung cancer treated with chemotherapy alone and in combination with erlotinib**. *J Clin*
19 *Oncol* 2005, **23**(25):5900-5909.
- 20 18. Skoulidis F, Byers LA, Diao L, Papadimitrakopoulou VA, Tong P, Izzo J, Behrens C, Kadara
21 H, Parra ER, Canales JR *et al*: **Co-occurring genomic alterations define major subsets of**
22 **KRAS-mutant lung adenocarcinoma with distinct biology, immune profiles, and**
23 **therapeutic vulnerabilities**. *Cancer Discov* 2015, **5**(8):860-877.
- 24 19. Skoulidis F, Goldberg ME, Greenawalt DM, Hellmann MD, Awad MM, Gainor JF, Schrock
25 AB, Hartmaier RJ, Trabucco SE, Gay L *et al*: **STK11/LKB1 Mutations and PD-1 Inhibitor**
26 **Resistance in KRAS-Mutant Lung Adenocarcinoma**. *Cancer Discov* 2018.
- 27 20. Becker PB, Workman JL: **Nucleosome remodeling and epigenetics**. *Cold Spring Harb*
28 *Perspect Biol* 2013, **5**(9).
- 29 21. Helming KC, Wang X, Roberts CWM: **Vulnerabilities of mutant SWI/SNF complexes in**
30 **cancer**. *Cancer cell* 2014, **26**(3):309-317.
- 31 22. Pan D, Kobayashi A, Jiang P, Ferrari de Andrade L, Tay RE, Luoma AM, Tsoucas D, Qiu X,
32 Lim K, Rao P *et al*: **A major chromatin regulator determines resistance of tumor cells to**
33 **T cell-mediated killing**. *Science* 2018, **359**(6377):770-775.
- 34 23. Miao D, Margolis CA, Gao W, Voss MH, Li W, Martini DJ, Norton C, Bosse D, Wankowicz
35 SM, Cullen D *et al*: **Genomic correlates of response to immune checkpoint therapies in**
36 **clear cell renal cell carcinoma**. *Science* 2018, **359**(6377):801-806.
- 37 24. Cancer Genome Atlas Research N: **Comprehensive genomic characterization of**
38 **squamous cell lung cancers**. *Nature* 2012, **489**(7417):519-525.
- 39 25. Deribe YL, Sun Y, Terranova C, Khan F, Martinez-Ledesma J, Gay J, Gao G, Mullinax RA,
40 Khor T, Feng N *et al*: **Mutations in the SWI/SNF complex induce a targetable**
41 **dependence on oxidative phosphorylation in lung cancer**. *Nature Medicine* 2018:1.
- 42 26. Bell EH, Chakraborty AR, Mo X, Liu Z, Shilo K, Kirste S, Stegmaier P, McNulty M,
43 Karachaliou N, Rosell R *et al*: **SMARCA4/BRG1 Is a Novel Prognostic Biomarker**

- 1 **Predictive of Cisplatin-Based Chemotherapy Outcomes in Resected Non-Small Cell**
2 **Lung Cancer.** *Clin Cancer Res* 2016, **22**(10):2396-2404.
- 3 27. Zehir A, Benayed R, Shah RH, Syed A, Middha S, Kim HR, Srinivasan P, Gao J, Chakravarty
4 D, Devlin SM *et al*: **Mutational landscape of metastatic cancer revealed from**
5 **prospective clinical sequencing of 10,000 patients.** *Nature Medicine* 2017, **23**(6):703.
- 6 28. Eisenhauer EA, Therasse P, Bogaerts J, Schwartz LH, Sargent D, Ford R, Dancey J, Arbuck
7 S, Gwyther S, Mooney M *et al*: **New response evaluation criteria in solid tumours:**
8 **revised RECIST guideline (version 1.1).** *European journal of cancer (Oxford, England :*
9 *1990)* 2009, **45**(2):228-247.
- 10 29. Newman AM, Liu CL, Green MR, Gentles AJ, Feng W, Xu Y, Hoang CD, Diehn M, Alizadeh
11 AA: **Robust enumeration of cell subsets from tissue expression profiles.** *Nature*
12 *methods* 2015, **12**(5):453-457.
- 13 30. Orvis T, Hepperla A, Walter V, Song S, Simon J, Parker J, Wilkerson MD, Desai N, Major
14 MB, Hayes DN *et al*: **BRG1/SMARCA4 inactivation promotes non-small cell lung cancer**
15 **aggressiveness by altering chromatin organization.** *Cancer research* 2014, **74**(22):6486-
16 6498.
- 17 31. Huang HT, Chen SM, Pan LB, Yao J, Ma HT: **Loss of function of SWI/SNF chromatin**
18 **remodeling genes leads to genome instability of human lung cancer.** *Oncology reports*
19 2015, **33**(1):283-291.
- 20 32. Lee W, Jiang Z, Liu J, Haverty PM, Guan Y, Stinson J, Yue P, Zhang Y, Pant KP, Bhatt D *et*
21 *al*: **The mutation spectrum revealed by paired genome sequences from a lung cancer**
22 **patient.** *Nature* 2010, **465**(7297):473-477.
- 23 33. Govindan R, Ding L, Griffith M, Subramanian J, Dees ND, Kanchi KL, Maher CA, Fulton R,
24 Fulton L, Wallis J *et al*: **Genomic landscape of non-small cell lung cancer in smokers and**
25 **never-smokers.** *Cell* 2012, **150**(6):1121-1134.
- 26 34. Pfeifer GP, Denissenko MF, Olivier M, Tretyakova N, Hecht SS, Hainaut P: **Tobacco**
27 **smoke carcinogens, DNA damage and p53 mutations in smoking-associated cancers.**
28 *Oncogene* 2002, **21**(48):7435-7451.
- 29 35. Dong ZY, Zhong WZ, Zhang XC, Su J, Xie Z, Liu SY, Tu HY, Chen HJ, Sun YL, Zhou Q *et al*:
30 **Potential Predictive Value of TP53 and KRAS Mutation Status for Response to PD-1**
31 **Blockade Immunotherapy in Lung Adenocarcinoma.** *Clin Cancer Res* 2017, **23**(12):3012-
32 3024.
- 33 36. Ock CY, Keam B, Kim S, Lee JS, Kim M, Kim TM, Jeon YK, Kim DW, Chung DH, Heo DS:
34 **Pan-Cancer Immunogenomic Perspective on the Tumor Microenvironment Based on**
35 **PD-L1 and CD8 T-Cell Infiltration.** *Clin Cancer Res* 2016, **22**(9):2261-2270.
- 36 37. Karanian-Philippe M, Velasco V, Longy M, Floquet A, Arnould L, Coindre JM, Le Naoures-
37 Mear C, Averous G, Guyon F, MacGrogan G *et al*: **SMARCA4 (BRG1) loss of expression is**
38 **a useful marker for the diagnosis of ovarian small cell carcinoma of the hypercalcemic**
39 **type (ovarian rhabdoid tumor): a comprehensive analysis of 116 rare gynecologic**
40 **tumors, 9 soft tissue tumors, and 9 melanomas.** *Am J Surg Pathol* 2015, **39**(9):1197-
41 1205.
- 42 38. Clarke BA, Witkowski L, Ton Nu TN, Shaw PA, Gilks CB, Huntsman D, Karnezis AN, Sebire
43 N, Lamovec J, Roth LM *et al*: **Loss of SMARCA4 (BRG1) protein expression as**
44 **determined by immunohistochemistry in small-cell carcinoma of the ovary,**

- 1 **hypercalcaemic type distinguishes these tumours from their mimics.** *Histopathology*
2 2016, **69**(5):727-738.
- 3 39. Arbour KC, Jordan E, Kim HR, Dienstag J, Yu HA, Sanchez-Vega F, Lito P, Berger M, Solit
4 DB, Hellmann M *et al*: **Effects of Co-occurring Genomic Alterations on Outcomes in**
5 **Patients with KRAS-Mutant Non-Small Cell Lung Cancer.** *Clin Cancer Res* 2018,
6 **24**(2):334-340.
- 7 40. Bonanno L, De Paoli A, Zulato E, Esposito G, Calabrese F, Favaretto A, Santo A, Conte AD,
8 Chilosi M, Oniga F *et al*: **LKB1 Expression Correlates with Increased Survival in Patients**
9 **with Advanced Non-Small Cell Lung Cancer Treated with Chemotherapy and**
10 **Bevacizumab.** *Clin Cancer Res* 2017, **23**(13):3316-3324.
- 11 41. Facchinetti F, Bluthgen MV, Tergemina-Clain G, Faivre L, Pignon JP, Planchard D, Remon
12 J, Soria JC, Lacroix L, Besse B: **LKB1/STK11 mutations in non-small cell lung cancer**
13 **patients: Descriptive analysis and prognostic value.** *Lung Cancer* 2017, **112**:62-68.
- 14 42. Tagal V, Wei S, Zhang W, Brekken RA, Posner BA, Peyton M, Girard L, Hwang T, Wheeler
15 DA, Minna JD *et al*: **SMARCA4-inactivating mutations increase sensitivity to Aurora**
16 **kinase A inhibitor VX-680 in non-small cell lung cancers.** *Nat Commun* 2017, **8**:14098.
- 17
- 18

1 **FIGURE LEGENDS**

2 **Figure 1:** *SMARCA4* mutations are associated with shorter disease-free survival (DFS)
3 and overall survival (OS) of *KRAS*-mutant LUAD patients treated with non-
4 immunotherapy treatment from the TCGA cohort. Kaplan-Meier survival analysis of
5 survival in (AC) the KS, KP and K subgroups and (BD) in the two-group comparison
6 between *SMRACA4*-mutant and wildtype *KRAS*-mutant patients.

7 **Figure 2:** *SMARCA4* mutations are associated with shorter overall survival (OS) of
8 *KRAS*-mutant LUAD patients treated with non-immunotherapy treatment from the MSK-
9 CT cohort. Kaplan-Meier survival analysis of OS (A) in the KS, KP and K subgroups and
10 (B) in the two-group comparison between *SMRACA4*-mutant and wildtype *KRAS*-
11 mutant patients.

12 **Figure 3:** *SMARCA4* mutations are associated with shorter progression-free survival
13 (PFS) of *KRAS*-mutant LUAD patients treated with immunotherapy treatment from the
14 MSK-IO cohort. Kaplan-Meier survival analysis of PFS (A) in the KS, KP and K
15 subgroups and (B) in the two-group comparison between *SMRACA4*-mutant and
16 wildtype *KRAS*-mutant patients.

17 **Figure 4:** *SMARCA4* mutations are associated with shorter progression-free survival
18 (PFS) and overall survival (OS) of *KRAS*-mutant LUAD patients treated with
19 immunotherapy treatment from the WFBCCC cohort. Kaplan-Meier survival analysis of
20 survival (AC) in the KS, KP and K subgroups and (BD) in the two-group comparison
21 between *SMRACA4*-mutant and wildtype *KRAS*-mutant patients.

1 **Figure 5:** Tumor microenvironment varied among three groups of patients. KS patients
2 contained the lowest proportions of CD8 and activated CD4 memory T cells than either
3 K or KP patients. The plot for all 22 types of immune cells was shown in
4 **Supplementary Figure 2.** * $P < .05$; Mann-Whitney U test.

5

1 **SUPPLEMENTAL CONTENT**

2 **Supplementary Table 1:** *KRAS*-mutant patient Characteristics in the TCGA cohort
3 treated with non-immunotherapy.

4 **Supplementary Table 2:** *KRAS*-mutant patient Characteristics in the MSKCC-CT
5 cohort treated with non-immunotherapy.

6 **Supplementary Table 3:** *KRAS*-mutant patient Characteristics in the MSK-IO cohort
7 treated with immunotherapy.

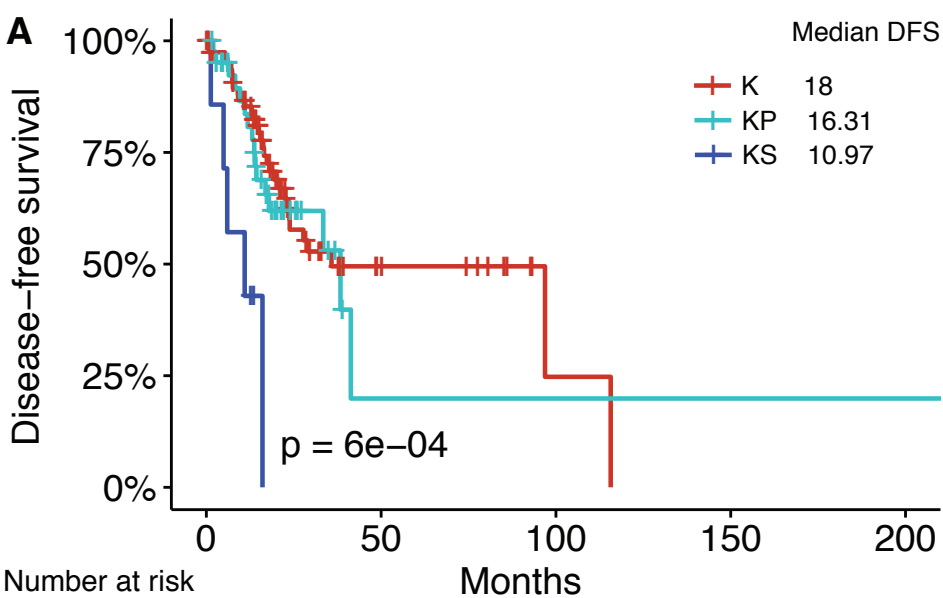
8 **Supplementary Table 4:** *KRAS*-mutant patient Characteristics in the WFBCC cohort
9 treated with immunotherapy.

10

11 **Supplementary Figure 1:** Global somatic mutation landscape of *KRAS*, *TP53* and
12 *SMARCA4* genes in the TCGA, MSK-CT, MSK-IO and WFBCCC cohorts.

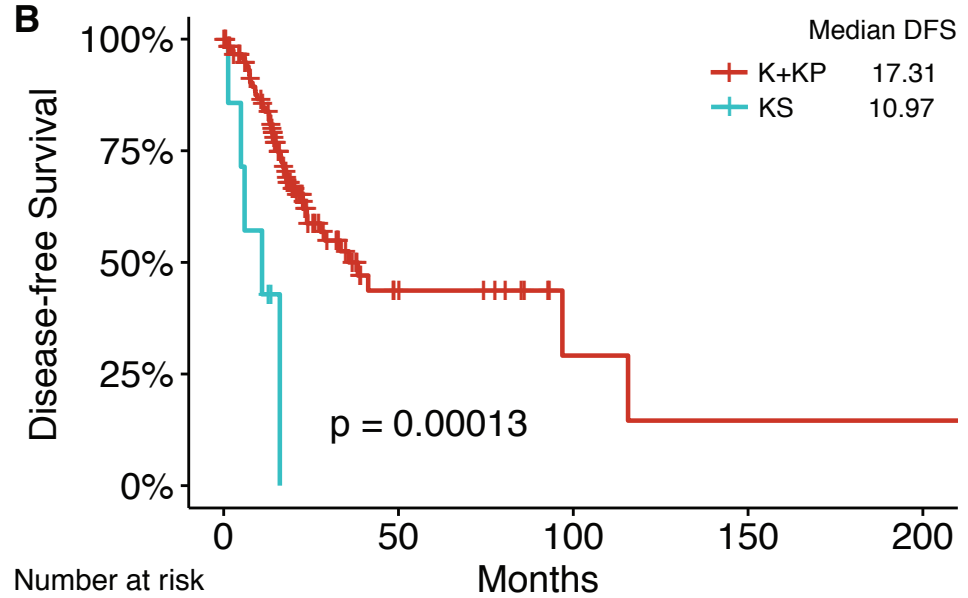
13 **Supplementary Figure 2:** The comparisons of estimated proportions of immune cell
14 subsets, as calculated by CIBERSORT among K, KP and KS patients. Across all cell
15 types, the proportions of CD8 T cells and activated CD4 memory T cells differ
16 significantly in the comparisons of K vs. KS and KP vs. KS (shown in Figure 5).

17 **Supplementary Figure 3:** *SMARCA4* mutations are associated with lower expression
18 level of *SMARCA4*.



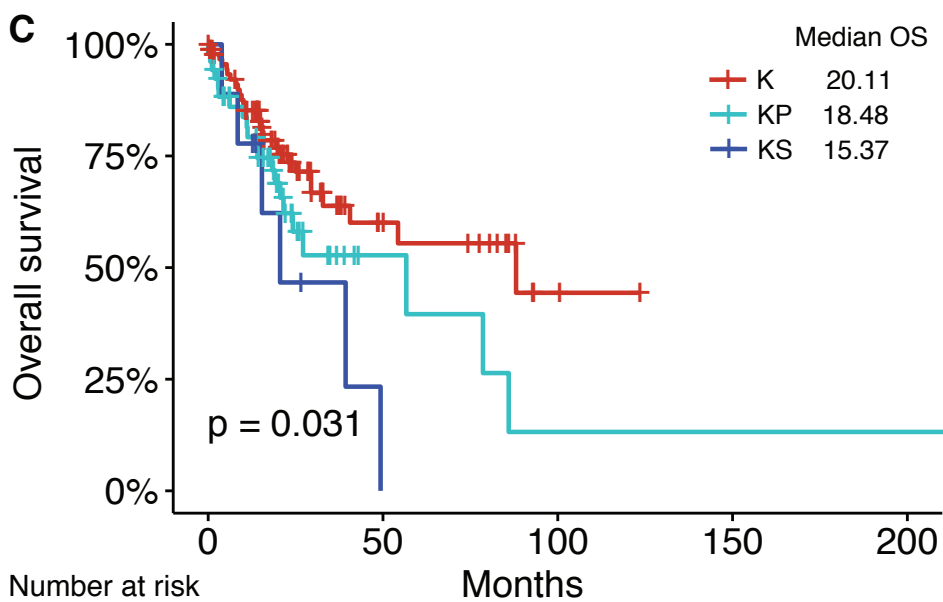
Number at risk (number censored)

	0	50	100	150	200
K	81 (1)	10 (42)	1 (50)	0 (50)	0 (50)
KP	42 (0)	1 (25)	1 (25)	1 (25)	1 (25)
KS	7 (0)	0 (2)	0 (2)	0 (2)	0 (2)



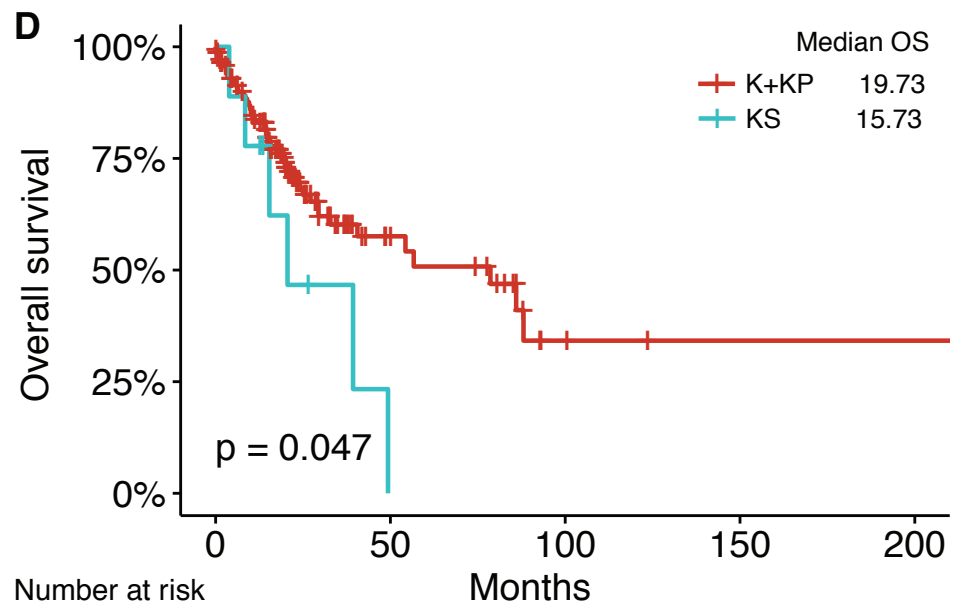
Number at risk (number censored)

	0	50	100	150	200
K+KP	123 (1)	11 (67)	2 (75)	1 (75)	1 (75)
KS	7 (0)	0 (2)	0 (2)	0 (2)	0 (2)



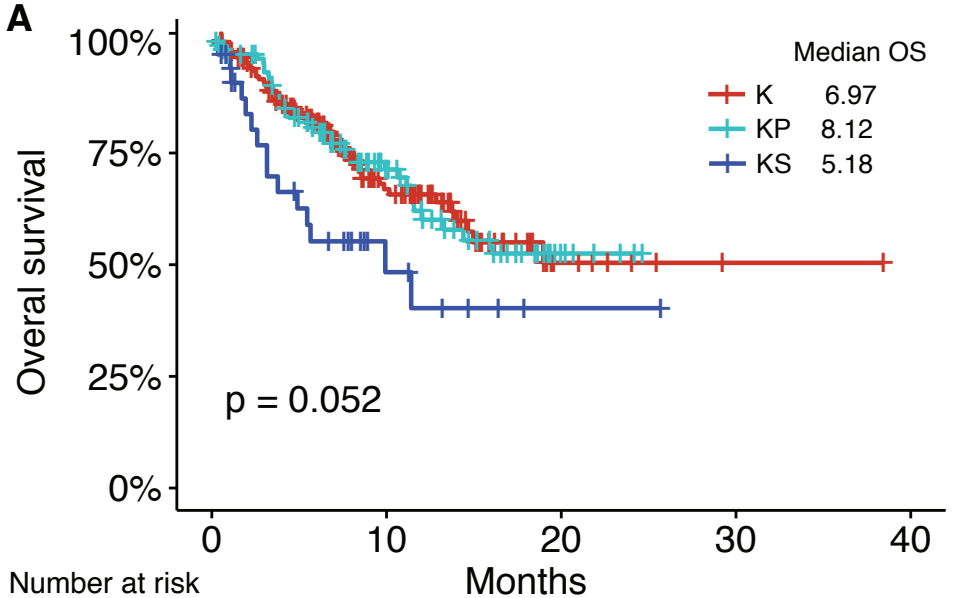
Number at risk (number censored)

	0	50	100	150	200
K	94 (1)	14 (54)	2 (64)	0 (66)	0 (66)
KP	52 (0)	4 (30)	1 (30)	1 (30)	1 (30)
KS	9 (0)	0 (3)	0 (3)	0 (3)	0 (3)



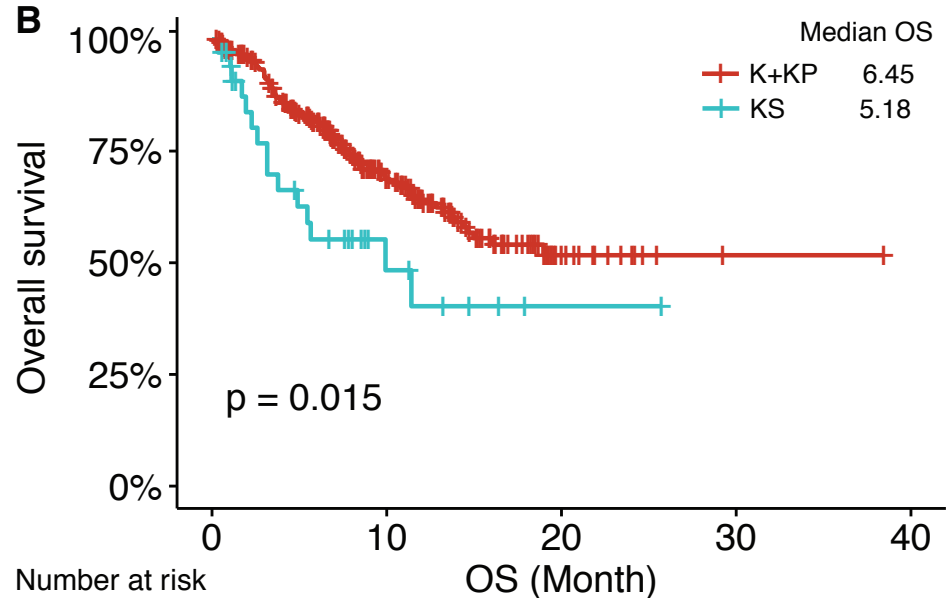
Number at risk (number censored)

	0	50	100	150	200
K+KP	146 (1)	18 (84)	3 (94)	1 (96)	1 (96)
KS	9 (0)	0 (3)	0 (3)	0 (3)	0 (3)



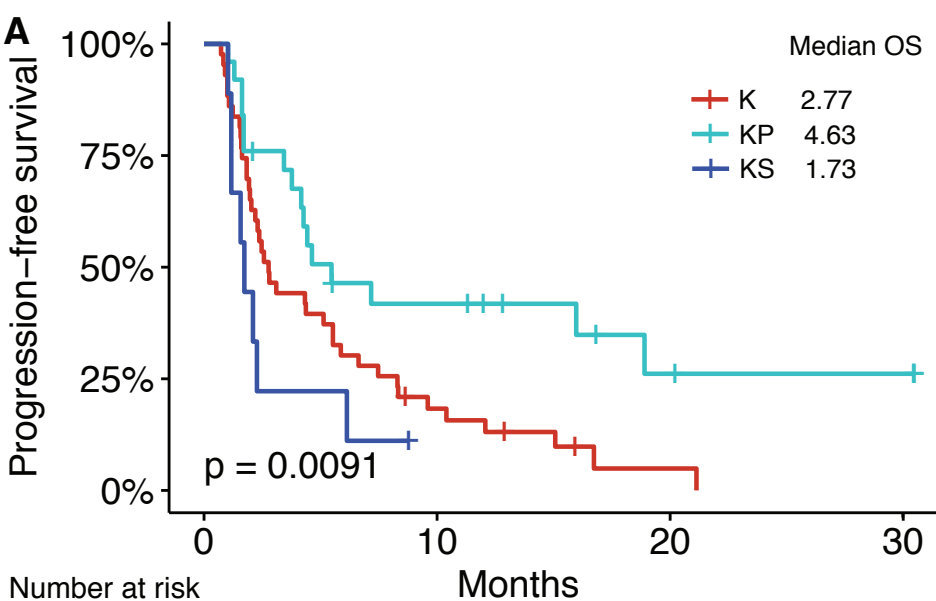
Number at risk
(number censored)

	0	10	20	30	40
K	173 (0)	56 (72)	7 (114)	1 (120)	0 (121)
KP	107 (0)	42 (39)	6 (66)	0 (72)	0 (72)
KS	34 (0)	7 (13)	1 (18)	0 (19)	0 (19)



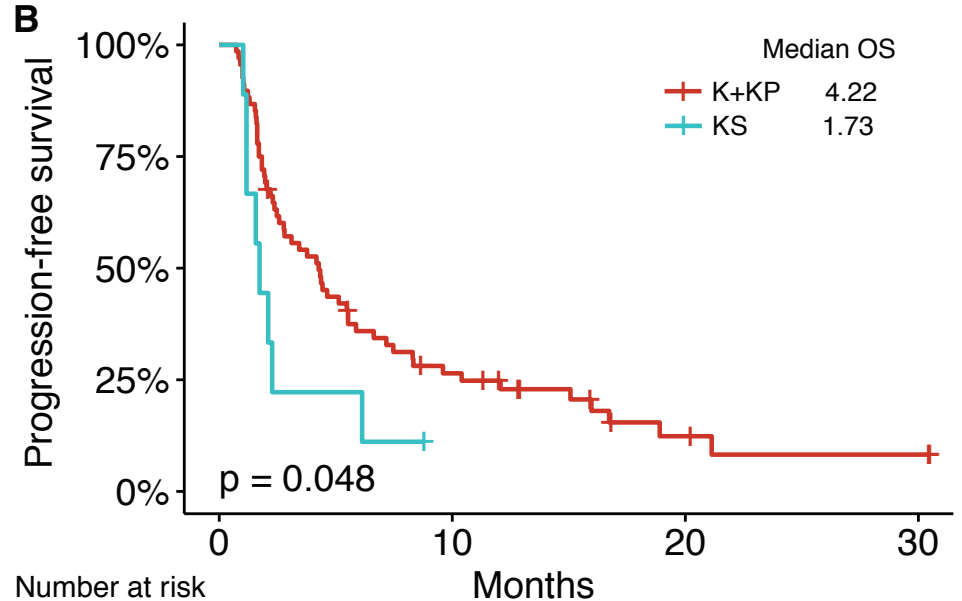
Number at risk
(number censored)

	0	10	20	30	40
K+KP	280 (0)	98 (111)	13 (180)	1 (192)	0 (193)
KS	34 (0)	7 (13)	1 (18)	0 (19)	0 (19)



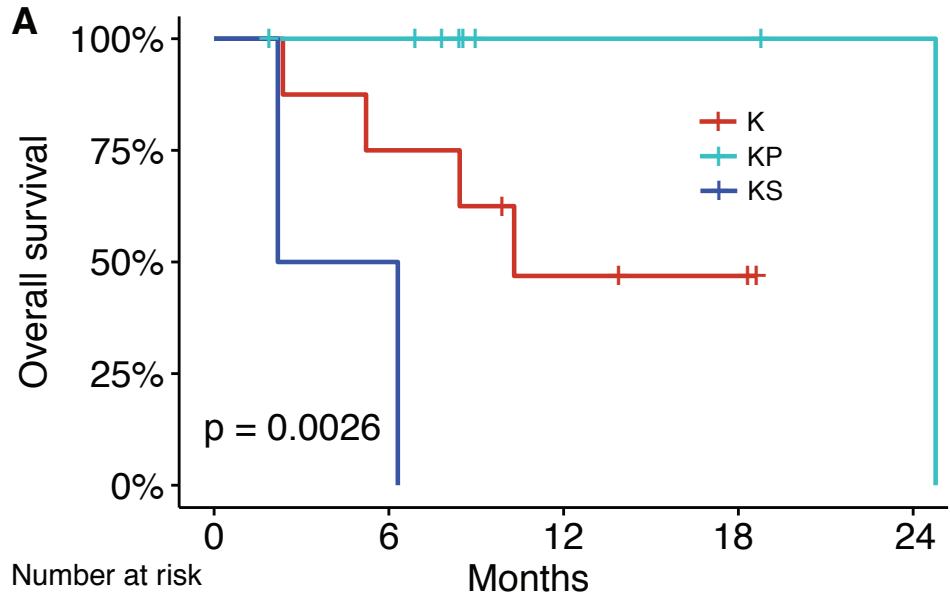
Number at risk
(number censored)

	0	10	20	30
K	43 (0)	7 (1)	1 (3)	0 (3)
KP	25 (0)	9 (2)	3 (6)	2 (7)
KS	9 (0)	0 (1)	0 (1)	0 (1)



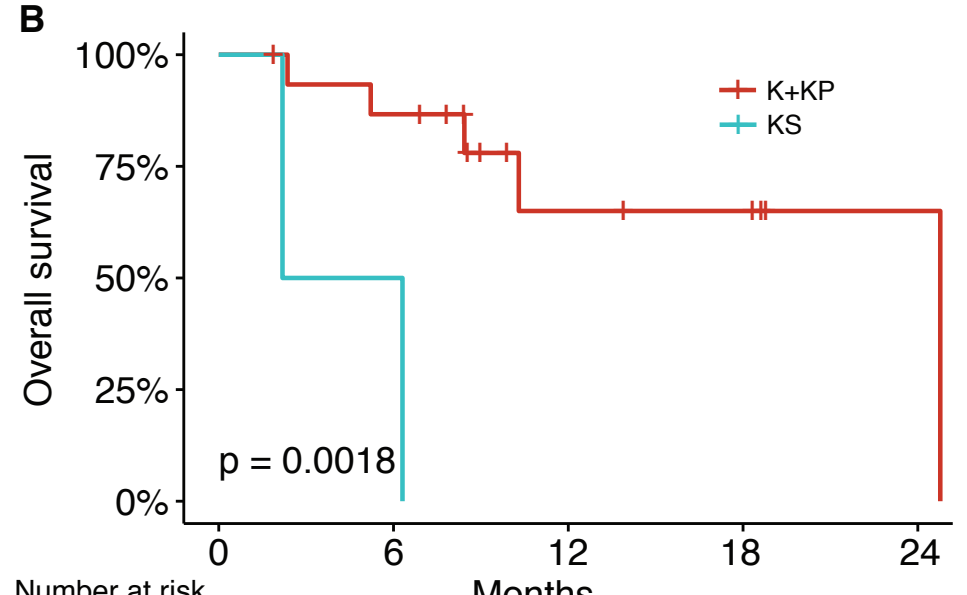
Number at risk
(number censored)

	0	10	20	30
K+KP	68 (0)	16 (3)	4 (9)	2 (10)
KS	9 (0)	0 (1)	0 (1)	0 (1)



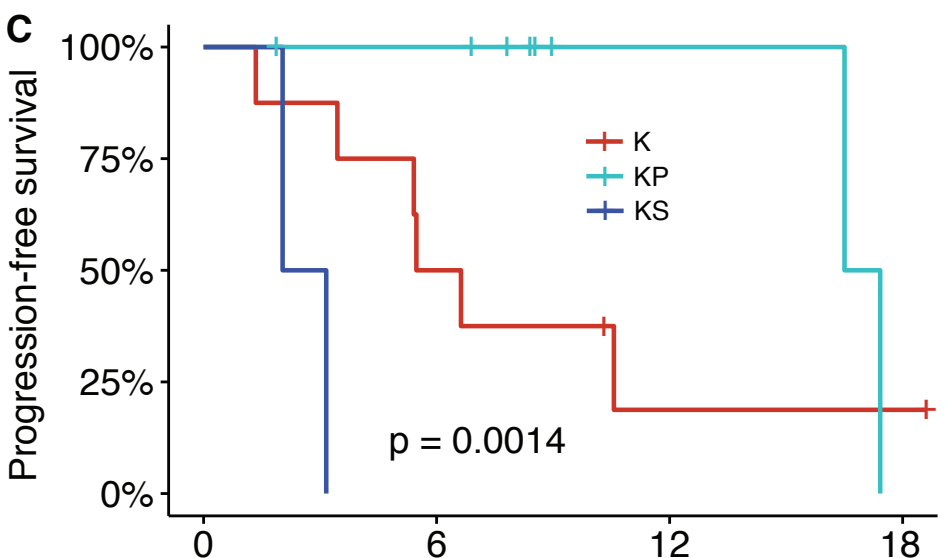
Number at risk
(number censored)

	0	6	12	18	24
K	8 (0)	6 (0)	3 (1)	2 (2)	0 (4)
KP	8 (0)	7 (1)	2 (6)	2 (6)	1 (7)
KS	2 (0)	1 (0)	0 (0)	0 (0)	0 (0)



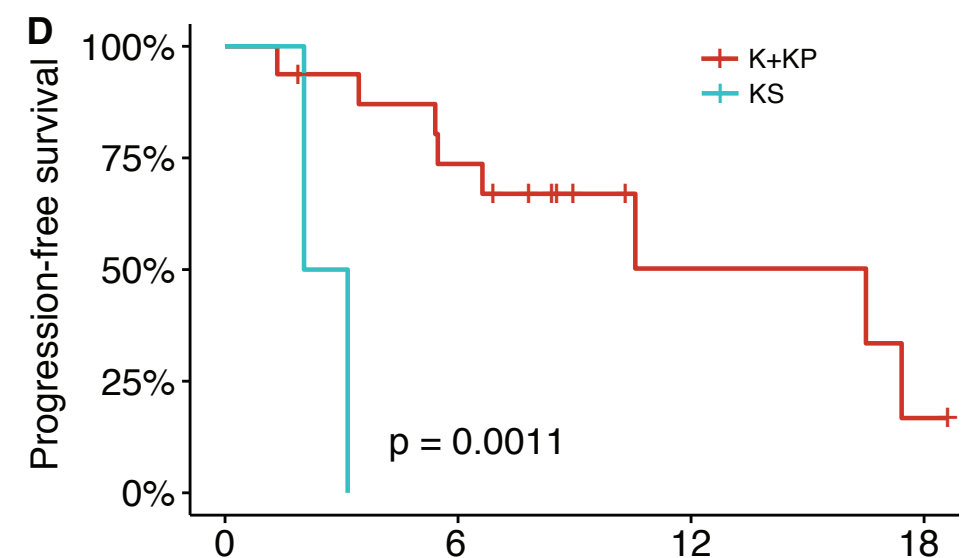
Number at risk
(number censored)

	0	6	12	18	24
K+KP	16 (0)	13 (1)	5 (7)	4 (8)	1 (11)
KS	2 (0)	1 (0)	0 (0)	0 (0)	0 (0)



Number at risk
(number censored)

	0	6	12	18
K	8 (0)	4 (0)	1 (1)	1 (1)
KP	8 (0)	7 (1)	2 (6)	0 (6)
KS	2 (0)	0 (0)	0 (0)	0 (0)



Number at risk
(number censored)

	0	6	12	18
K+KP	16 (0)	11 (1)	3 (7)	1 (7)
KS	2 (0)	0 (0)	0 (0)	0 (0)

Estimated proportion

Label

K

KP

KS

0.3

0.2

0.1

0.0

CD8 T

Activated CD4 Memory T

*

*

*

*