

1  
2  
3  
4  
5  
6  
7  
8  
9  
10  
11  
12  
13  
14  
15  
16  
17  
18  
19  
20  
21  
22  
23  
24  
25  
26  
27  
28

**Time is of the essence: impact of delays on effectiveness of contact tracing  
for COVID-19, a modelling study**

Prof. Mirjam E. Kretzschmar<sup>1\*</sup>, PhD, Ganna Rozhnova<sup>1,2</sup>, PhD, Martin Bootsma<sup>1,3</sup>, PhD,  
Michiel van Boven<sup>1</sup>, PhD, Prof. Janneke van de Wijgert<sup>1,4</sup>, PhD, Prof. Marc Bonten<sup>1,5</sup>, MD

<sup>1</sup> Julius Center for Health Sciences and Primary Care, University Medical Center Utrecht,  
Utrecht University, Utrecht, the Netherlands

<sup>2</sup> BioISI – Biosystems & Integrative Sciences Institute, Faculdade de Ciências, Universidade  
de Lisboa, Lisboa, Portugal

<sup>3</sup> Mathematical Institute, Utrecht University, Utrecht, The Netherlands

<sup>4</sup> Institute of Infection and Global Health, University of Liverpool, Liverpool, UK

<sup>5</sup> Department of Medical Microbiology, University Medical Center Utrecht, Utrecht  
University, the Netherlands

\*corresponding author

Mirjam E. Kretzschmar

Julius Center for Health Sciences and Primary Care

University Medical Center Utrecht, Utrecht

Email: [m.e.e.kretzschmar@umcutrecht.nl](mailto:m.e.e.kretzschmar@umcutrecht.nl)

Phone: +31 88 75 687 61

**NOTE: This preprint reports new research that has not been certified by peer review and should not be used to guide clinical practice.**

29  
30

## 31 Summary

### 32 Background

33 With confirmed cases of COVID-19 declining in many countries, lockdown measures are  
34 gradually being lifted. However, even if most social distancing measures are continued,  
35 other public health measures will be needed to control the epidemic. Contact tracing via  
36 conventional methods or mobile app technology is central to control strategies during de-  
37 escalation of social distancing. We aimed to identify key factors for a contact tracing  
38 strategy (CTS) to be successful.

39

### 40 Methods

41 We evaluated the impact of timeliness and completeness in various steps of a CTS using a  
42 stochastic mathematical model with explicit time delays between time of infection and  
43 symptom onset, and between symptom onset, diagnosis by testing, and isolation (testing  
44 delay). The model also includes tracing of close contacts (e.g. household members) and  
45 casual contacts, followed by testing regardless of symptoms and isolation if positive, with  
46 different delays (tracing delay) and coverages (tracing coverage). We computed effective  
47 reproduction numbers of a CTS ( $R_{cts}$ ) for a population with social distancing measures and  
48 various scenarios for isolation of index cases and tracing and quarantine of its contacts.

49

### 50 Findings

51 For the best-case scenario (testing and tracing delays of 0 days and tracing coverage of  
52 80%), and assuming that around 40% of transmission occur before symptom onset, the

53 model predicts that the effective reproduction number of 1.2 (with social distancing only)  
54 will be reduced to 0.8 by adding contact tracing. A testing delay of 2 days requires tracing  
55 delay to be at most 1 day, or tracing coverage to be at least 80% to keep  $R_{cts}$  below 1. With a  
56 testing/isolation delay of 3 days, even the most efficient CTS cannot reach  $R_{cts}$  values below  
57 1. The effect of minimizing tracing delay (e.g., with app-based technology) declines with  
58 decreasing coverage of app use, but app-based tracing alone remains more effective than  
59 conventional tracing alone even with 20% coverage. The proportion of transmissions per  
60 index case that can be prevented depends on testing and tracing delays, and ranges from up  
61 to 80% in the best-case scenario (testing and tracing delays of 0 days) to 42% with a 3-day  
62 testing delay and 18% with a 5-day testing delay.

63

#### 64 **Interpretation**

65 In our model, minimizing testing delay had the largest impact on reducing onward  
66 transmissions. Optimizing testing and tracing coverage and minimizing tracing delays, for  
67 instance with app-based technology, further enhanced CTS effectiveness, with a potential to  
68 prevent up to 80% of all transmissions. Access to testing should therefore be optimized, and  
69 mobile app technology may reduce delays in the CTS process and optimize contact tracing  
70 coverage.

71

72

73 **Funding:** ZonMw projects 91216062 and 10430022010001, Fundação para a Ciência e a Tecnologia project  
74 reference 131\_596787873, and EU H2020 grant RECOVER (H2020-101003589).

## 75 Research in context

### 76 Evidence before this study

77 We searched PubMed, bioRxiv, and medRxiv for articles published in English from January 1,  
78 2020, to June 20, 2020, with the following keywords: (“2019-nCoV” OR “novel coronavirus”  
79 OR “COVID-19” OR “SARS-CoV-2”) AND “contact tracing” AND “model\*”. Population-level  
80 modelling studies of severe acute respiratory syndrome coronavirus 2 (SARS-CoV-2) have  
81 suggested that isolation and tracing alone might not be sufficient to control outbreaks and  
82 additional measures might be required. However, few studies have focused on the effects of  
83 lifting individual measures once the first wave of the epidemic has been controlled. Lifting  
84 measures must be accompanied by effective contact tracing strategies (CTS) in order to  
85 keep the effective reproduction number below 1. A detailed analysis, with special emphasis  
86 on the effects of time delays in testing of index patients and tracing of contacts, has not  
87 been done.

88

### 89 Added value of this study

90 We performed a systematic analysis of the various steps required in the process of testing  
91 and diagnosing an index case as well as tracing and isolating possible secondary cases of the  
92 index case. We then used a stochastic transmission model which makes a distinction  
93 between close contacts (e.g. household members) and casual contacts to assess which steps  
94 and (possible) delays are crucial in determining the effectiveness of CTS. We  
95 evaluated how delays and the level of contact tracing coverage influence the effective  
96 reproduction number, and how fast CTS needs to be to keep the reproduction number  
97 below 1. We also analyzed what proportion of onward transmission can be prevented for

98 short delays and high contact tracing coverage. Assuming that around 40% of transmission  
99 occurs before symptom onset, we found that keeping the time between symptom onset and  
100 testing and isolation of an index case short (<3 days) is imperative for a successful CTS. This  
101 implies that the process leading from symptom onset to receiving a positive test should be  
102 minimized by providing sufficient and easily accessible testing facilities. In addition, reducing  
103 contact-tracing delays also helps to keep the reproduction number below 1.

104

### 105 **Implications of all the available evidence**

106 Our analyses highlight that CTS will only contribute to containment of COVID-19 if it can be  
107 organised in a way that time delays in the process from symptom onset to isolation of the  
108 index case and his/her contacts are very short. The process of conventional contact tracing  
109 should be reviewed and streamlined, while mobile app technology may offer a tool for  
110 gaining speed in the process. Reducing delay in testing subjects for SARS-CoV-2 should be a  
111 key objective of CTS.

112

113

## 114 Introduction

115 As the first wave of the SARS-CoV-2 has reached its peak of cases in many countries,  
116 societies are preparing so-called exit-strategies from the COVID-19 lockdown, while still  
117 successfully controlling transmission. Contact tracing, in combination with quarantine and  
118 potentially testing of the contacts, is considered a key component in a phase when lockdown  
119 measures are gradually lifted<sup>1-8</sup>. Contact tracing is an intervention, where an index case with  
120 confirmed infection is asked to provide information about contact persons, who were at risk  
121 of acquiring infection from the index case within a given time period before the positive test  
122 result. These contact persons are then traced and informed about their risk, quarantined, and  
123 tested if eligible for testing according to national testing guidelines. This requires upscaling  
124 of conventional contact tracing capacity. The potential of mobile apps to support contact  
125 tracing is widely discussed and such technology has been used in several Asian countries.  
126 Although these countries have successfully reduced case numbers, no causal relationship  
127 between use of app technology and epidemic control has yet been shown<sup>9-14</sup>. Many  
128 uncertainties remain on the optimal process of contact tracing with conventional methods  
129 and/or mobile applications, on the timing of testing for current or past infection, and on the  
130 required coverage of contact tracing needed.

131

132 Modelling studies have demonstrated how mobile applications can increase effectiveness of  
133 contact tracing, compared to conventional approaches for contact tracing, but effectiveness  
134 depends on what proportion of the population will use the app consistently for a sufficiently  
135 long period of time<sup>9</sup>. Modelling studies have predicted that contact tracing alone cannot  
136 control an outbreak if tracing coverage is too low<sup>2,15</sup>. What tracing coverage is needed  
137 depends on how much transmission occurs before symptom onset, and on the details of the  
138 tracing process.

139

140 In previous work, we have investigated the impact of timeliness and completeness of case  
141 reporting for the effectiveness of surveillance and interventions<sup>16,17</sup>, and we quantified the  
142 timeliness of contact tracing of infected passengers during an airline flight for the 2009  
143 pandemic influenza<sup>18</sup>. In all of these studies, the timing of various steps in the monitoring and  
144 intervention chain emerged as one of the key factors for effectiveness of a public health  
145 response. Usually, there are identifiable delays in the response chain that may be critical to  
146 the overall effectiveness of a strategy.

147

148 Here we analyze in detail the process chain of identifying index cases by symptom-reporting  
149 followed by testing, and subsequent contact tracing, with the aim to inform policy makers on  
150 the relative importance of key steps in the process. We use a mathematical model that reflects  
151 the various steps and delays in the contact tracing process to quantify the impact of delays on  
152 the effective reproduction number and the fraction of onward transmission prevented per  
153 diagnosed index case<sup>5,19</sup>.

154

## 155 Methods

### 156 Time delays in contact tracing

157 Our starting point is an assumed effective reproduction number ( $R_e$ ) for COVID-19 of around  
158 1, describing a situation with “social distancing but measures lifted to some extent”. We then  
159 quantify the relative contribution of the individual components of a contact tracing strategy  
160 (CTS) required to bring and maintain the effective reproduction number with CTS ( $R_{CTS}$ ) to a  
161 value below 1. For simplicity we do not include transmission in healthcare settings, as in  
162 healthcare settings like nursing homes, which can be viewed as closed populations, other  
163 interventions are more appropriate.

164 We break down the process of contact tracing in two steps (Figure 1; Supplementary  
165 Information Table S1).

- 166 • An index case acquires infection (at time  $T_0$ ), then after a short latent period becomes  
167 infectious (at time  $T_1$ ), and finally symptomatic (at time  $T_2$ ), which is here defined as  
168 “being eligible for testing”. Subsequently a proportion of all symptomatic subjects gets  
169 tested and diagnosed (at time  $T_3$ ). The time between  $T_2$  and  $T_3$  is called the “testing  
170 delay” ( $D_1 = T_3 - T_2$ ), and may vary between 0 and 7 days, and in this period individuals  
171 might self-quarantine. We refer to the proportion of all symptomatically infected cases  
172 that are tested as testing coverage and vary it from 20% to 80% in increments of 20%.  
173 After being diagnosed, we assume index cases are isolated with no further transmission.
- 174 • The second step is tracing contacts of the index case, which occurs at time  $T_4$ . A fraction  
175 of those contacts will be found and tested. We assumed that all contacts, regardless of  
176 symptoms, are offered testing, and that those testing negative do not spread. Those who  
177 are found infected will be isolated, with effectiveness ranging from 0% to 100%. We  
178 assume that contacts in isolation do not spread. The time between  $T_3$  and  $T_4$  is the  
179 “tracing delay” ( $D_2 = T_4 - T_3$ ), which may range from 0 (for instance with app  
180 technology) to 3 days (with conventional approaches). In this step, tracing coverage is  
181 defined as the proportion of contacts detected, which either depends on the capacity of  
182 conventional approaches (ranging from 20% to 80% in increments of 20%) or on the  
183 fraction of the population using suitable app technology for screening (ranging from 20%  
184 to 100% in increments of 20%). We did not consider hybrid approaches of combined  
185 conventional and app-based CTS.



186 The best-case scenario we consider is that persons eligible for testing are immediately tested  
187 (coverage 80%) with a very fast test result (test-delay 0 days) and immediate isolation when  
188 testing positive, followed by immediate tracing (trace delay 0 days) of all contacts, that  
189 immediately adhere to isolation measures (coverage 80%). We consider more realistic  
190 scenarios where testing and tracing are suboptimal, e.g. a conventional CTS, and we vary  
191 these parameters separately in a sensitivity analysis (see Supplementary Information).

192

### 193 **Impact on effectiveness on population level**

194 To analyse the impact of these time delays on the effectiveness of contact tracing we use a  
195 model introduced by Kretzschmar et al<sup>19</sup>, which was adapted for SARS-CoV-2<sup>5</sup>. The  
196 stochastic model describes an epidemic as a branching process with progression through  
197 latent infection and infectious period in time steps of 1 day. Infectivity and probability of  
198 symptom onset per day of the infectious period, and numbers of contacts per day were fitted  
199 to distributions taken from published data.<sup>20-24</sup> We distinguish between close contacts (e.g.  
200 household contacts, but also other high-risk contacts) and casual contacts, which differ in the  
201 risk of acquiring infection from the index case. Also, the time required for tracing and  
202 isolating infected contacts and the coverage of tracing may differ between these types of  
203 contacts and between different CTS (i.e., conventional contact tracing versus mobile app  
204 supported contact tracing). We assume that isolation is perfect, i.e. that isolated persons do  
205 not transmit any longer, and that all traced infected contacts are isolated, regardless of  
206 whether they develop symptoms or not. The model allows for explicit computation of the  
207 basic reproduction number  $R_0$ , the effective reproduction number under social-distancing  
208 interventions  $R_e$ , and the effective reproduction number with CTS ( $R_{cts}$ ). Reproduction  
209 numbers were calculated as expectations, and distributions of individual reproduction

210 numbers were simulated. The model was coded in Mathematica 12.1. For details, see the  
211 Supplementary Information.

212

### 213 **Parameter settings**

214 We assumed that without social distancing individuals have on average 4 close contacts per  
215 day and around 9 casual contacts per day, with stochastic variability. The distributions were  
216 fitted to data from the Polymod study for the Netherlands<sup>23</sup>. Transmission probability per  
217 contact for close contacts was taken to be 4 times higher than for casual contacts.

218 Symptomatic and asymptomatic cases were assumed to be equally infectious. Overall, the  
219 transmission probability was calibrated to a basic reproduction number of  $R_0 = 2.5$ . For  
220 social distancing, we assumed that close contacts were reduced by 40% and casual contacts  
221 by 70%. The resulting effective reproduction number was  $R_e = 1.2$ .

222

### 223 **Uncertainty of model outcomes**

224 We considered uncertainty due to stochastic variability, and uncertainty due to possible  
225 variation in parameter estimates. We dealt with stochastic variability by computing  
226 individual reproduction numbers for 1000 individuals for all scenarios, and plotted their  
227 distributions as boxplots. Parameter uncertainty was explored by performing simulations  
228 using hypercube sampling for transmission probabilities and probabilities of symptom onset  
229 per day of the infectious period (Supplementary Information).

230

### 231 **Scenarios modelled**

232 We analyzed the impact of various testing and tracing delays and tracing coverage on the  
233 effective reproduction number  $R_{cts}$  while keeping the testing coverage at 80%. For  
234 comparison, we also considered the strategy where symptomatic individuals get tested and

235 isolated, without subsequent tracing ( $R_{iso}$ ). We varied the testing delay  $D_1$  between 0 and 7  
236 days, the tracing delay  $D_2$  between 0 and 3 days, and tracing coverages between 0% and  
237 100% in increments of 20%. For conventional contact tracing, we assumed that coverage is  
238 higher for close contacts than for casual contacts.

239

240 We then compared the effectiveness of conventional CTS alone with a scenario in which  
241 mobile app technology is used for alerting subjects to be tested and for tracing contacts.  
242 Differences between these strategies were taken as follows. The testing delay ( $D_1$ ) is reduced  
243 with app technology. We assumed a conventional CTS setting in which symptomatic  
244 individuals need to decide to seek health care to get tested, and we assumed that with app  
245 technology symptomatic persons get alerted and can be tested without health care  
246 interference. For conventional CTS we assumed suboptimal coverage in identifying contacts  
247 from the week before diagnosis due to recall bias, especially for casual contacts. For CTS  
248 with mobile app technology we assume 60% and 80% tracing coverage of the contacts of  
249 subjects using app technology. We show also results for 100% coverage, although  
250 realistically more than 80% is not feasible, because not all contacts may be correctly  
251 identified and compliance with isolation of those tested positive may not be perfect. We  
252 assume that tracing goes back for 7 days before the positive test result. The exact parameter  
253 values for this comparison are shown in Table 1.

254

255 Next, we quantified the impact of coverage of testing and app use on the effectiveness of  
256 CTS. We varied the percentage of app users in the population between 20% and 100% in  
257 increments of 20%. We first considered the situation that testing is provided for 80% of  
258 persons with symptoms independent of app use, and app use only influences the fraction of  
259 contacts that are traced. Alternatively, assumed that only app users are tested (i.e. testing

260 coverage varies between 20% and 100% in increments of 20%), and coverage of tracing also  
261 depends on fraction of app use. In all cases, a contact person could only be traced if both the  
262 index case and the contact person were app users, i.e. the probability of a contact being traced  
263 is given by the square of the proportion of app users.

264

265 Finally, we quantified the fraction of transmissions of an index person that can be prevented,  
266 and the contribution to the fraction prevented from isolation and from tracing contacts with  
267 decreasing delays. The number of onward transmissions of an index case is by definition  
268 described by the effective reproduction number of the realized scenario. Therefore, the  
269 difference of reproduction numbers between two intervention scenarios under the condition  
270 that an index case is diagnosed, describes the fraction of onward transmissions prevented. For  
271 contact persons, this is the fraction of the total infectivity that lies after the time of isolation,  
272 i.e. the part of infectiousness that is prevented by contact tracing. In other words, a contact  
273 person who is detected and isolated before the start of their infectious period is a fully  
274 prevented transmission, while a contact person who is only traced and identified after 70% of  
275 their infectivity has passed, is counted as 0.3 of a prevented onward transmission.

276

### 277 **Role of the funding source**

278 The funders of the study had no role in study design, data collection, data analysis, data  
279 interpretation, writing of the manuscript, or the decision to submit for publication. All authors  
280 had full access to all the data in the study and were responsible for the decision to submit the  
281 manuscript for publication.

282

## 283 **Results**

284 In the best-case scenario, if 80% of infectious persons that develop symptoms are tested and  
285 isolated within 1 day after symptom onset the effective reproduction number  $R_e$  is expected  
286 to decline from 1.2 to  $R_{iso} = 1.0$ , without contact tracing (Figure 2). Contact tracing may  
287 further decrease the reproduction number to  $R_{cts}=0.8$  in the best case scenario. In the best  
288 case scenario – a testing delay of 0 days, a tracing delay of 0 days, and a tracing coverage of  
289 80%, the additional reduction of  $R_{cts}$  predicted by the model is 33%. Yet, with a testing delay  
290 of 2 days, tracing delay should be at most 1 day, or tracing coverage should be at least 80% to  
291 keep  $R_{cts}$  below 1. In these scenarios, the reduction of  $R_{cts}$  compared to the best-case scenario  
292 is estimated at 17% (Supplementary Information Figure S4). With a testing delay of more  
293 than 3 days, even perfect contact tracing cannot bring  $R_{cts}$  values below 1.

294

295 We assumed that conventional CTS has longer tracing delay and lower tracing coverage than  
296 CTS based on app technology which results in marked differences in  $R_{cts}$  for the whole range  
297 of testing delay (Figure 2A). With conventional CTS,  $R_{cts}$  would remain above 1, if the  
298 testing delay exceeds 0 days, whereas contact tracing based on app technology could still  
299 keep  $R_{cts}$  below 1, as long as testing and tracing coverage would be at least 80%, or if testing  
300 delay is 1 day and tracing coverage 60%. If the testing delay reaches 5 days or more, app  
301 technology adds little effectiveness to conventional CTS or just isolating symptomatic cases.

302

303 The reductions of  $R_e$  (based on social distancing) achieved by isolation of symptomatic cases  
304 only, conventional CTS, and mobile app-based CTS are shown in figure 3A. For isolation  
305 only and for conventional CTS we assumed a delay of 4 days between symptom onset and  
306 isolation of the index case. The relative reductions are independent of the level of  $R_e$ , similar  
307 reductions are seen for  $R_0$ , i.e. in a situation without social distancing (Supplementary  
308 Information). Conventional CTS, even if applied for all infected subjects with symptoms, is

309 27% less effective than mobile app-based CTS alone, due to longer tracing delays and lower  
310 tracing coverage. Figure 3B shows the distributions of individual reproduction numbers for  
311 the testing delays assumed in Table 1, i.e. 4 days for isolation and conventional CT, and 0  
312 days for app-based CTS. Only for app-based CTS the means of the individual reproduction  
313 numbers are below 1.

314

315 The effectiveness of app-based technology declines with lower fractions of persons using it  
316 (Figure 4). Yet, app-based tracing on its own remains more effective than conventional  
317 tracing alone, even with 20% coverage, due to its inherent speed. Even with low coverage  
318 there is a reduction of  $R_e$ , due to fast tracing of a small part of the population. Depending on  
319  $R_e$ , such an approach might be sufficient to reduce  $R_{cts}$  to levels below 1. This can be seen in  
320 the distributions of the individual reproduction numbers (Figure 4B and 4D), where in 4B the  
321 means of the distributions are below 1 for 40% and more app use, while in 4D this is the case  
322 for 60% and above.

323

324

325 In Table 2, we quantified proportions of transmissions per index case that can be prevented  
326 depending on testing delay, stratified by of isolation of index cases and tracing delays. In the  
327 best-case scenario (testing and tracing delay being 0 days) around 80% of transmissions can  
328 be prevented if tracing coverage is 80%.

329

330

331

## 332 Discussion

333 Using a mathematical model that describes the different steps of CTS for COVID-19 we have  
334 quantified the relevance of delays and coverage proportions for controlling SARS-CoV-2  
335 transmission. We conclude that reducing the testing delay, i.e. shortening the time between  
336 symptom onset and positive test result (assuming immediate isolation), is the most important

337 factor for improving CTS effectiveness. Reducing the tracing delay, i.e. shortening the time  
338 of contact tracing (assuming immediate testing and isolation if positive), may further enhance  
339 CTS effectiveness. Yet this additional effect rapidly declines with increasing testing delay.  
340 The effectiveness of app-based CTS declines with lower app use coverage, but it remains  
341 more effective than conventional contact tracing even with lower coverage, due to its  
342 inherent speed. CTS therefore has the potential to control virus transmission, and to enable  
343 alleviation of other control measures, but only if all delays are maximally reduced. It should  
344 be noted that we simulated two CTS systems (conventional CTS with testing and tracing  
345 delays and app-based CTS without delays) and ignored hybrid approaches. At present, most  
346 European countries are using conventional CTS, but are attempting to reduce delays (for  
347 example, by improving testing and tracing capacity and by removing testing barriers), and are  
348 piloting or planning the addition of app-based contact-tracing. Such hybrid CTS systems  
349 would fall somewhere between the fully conventional and app-based scenarios described in  
350 this paper.

351

352 Several factors can reduce CTS effectiveness, such as large proportions of cases who remain  
353 asymptomatic or are otherwise not diagnosed, and large proportions of contacts who cannot  
354 be traced. App-based technology could increase the proportion of tracable contacts, because  
355 it does not rely on recall of names and contact details, but this would require the participation  
356 of a substantial proportion of the population. App use acceptance may be hampered by  
357 privacy concerns and other ethical considerations, which limit its acceptance. Also, app use  
358 needs to continue over a long time period, requiring sustained adherence by app users. Low  
359 participation does not render CTS useless, however, because it could help to locally  
360 extinguish clusters before they grow larger. In addition, every measure that lowers the

361 effective reproduction number, even if it is already below 1, will lower the cumulative case  
362 number and speed up the time until elimination of the virus from the population.

363

364 The strength of our approach is that it explicitly takes many details of the contact tracing  
365 process into account, such that the key factors can be identified. A limitation of our approach  
366 is that it does not take population age-structure into account, which may influence the  
367 proportion of asymptomatic cases and mobile app use coverage. Also, the willingness of a  
368 case to self-isolate depends on age and social norms, may depend on socio-economic status,  
369 and is affected by perceived benefit of isolation in relation to perceived risk of the infection  
370 to others<sup>25</sup>. We also excluded other heterogeneities while assuming homogeneous mixing<sup>26,27</sup>,  
371 and assumed homogeneously distributed use of app technology for different coverage levels.  
372 Clustering of non-users may have consequences for overall effectiveness of CTS, similar to  
373 clustering of non-vaccinated persons. Furthermore, we ignored that a sizeable portion of  
374 transmissions may be acquired nosocomially when population prevalence is still low.<sup>28</sup> The  
375 model also ignores that some contacts of the index case may have self-quarantined with  
376 symptoms before they are traced by CTS, which lowers the benefits of CTS.

377

378 Our results add to results from other modelling studies, which showed that CTS can be an  
379 effective intervention if tracing coverage is high and if the process is fast<sup>2,15</sup>. A determining  
380 factor is the proportion of transmissions occurring before symptom onset, which determines  
381 the urgency of tracing and isolating contacts as fast as possible. Our study showed in detail  
382 what the role is of each step in the CTS process in making it successful. Our model differs in  
383 that it makes a distinction between close and casual contacts, and that we consider scenarios  
384 for conventional CTS and mobile app-based CTS characterized by specific delays and  
385 coverages.



386

387 Our finding of the crucial importance of the first step of CTS, establishing a diagnosis in  
388 cases with symptoms, has important consequences. It requires an infrastructure for testing,  
389 that allows persons with symptoms to be tested, preferably, within one day of symptom onset.  
390 Studies have demonstrated that viral shedding in the respiratory tract is highest at the start of  
391 symptoms<sup>29,30</sup>, so early testing will also increase the sensitivity of this approach. To further  
392 enhance effectiveness, as many infectious persons as possible need to be tested regardless of  
393 symptoms, which requires a low threshold for testing. As the clinical symptoms of COVID-  
394 19 are mostly mild and heterogeneous, many persons should be eligible for testing, resulting  
395 in a large proportion of negative test results. Future work should determine the optimal  
396 balance between the proportion of test-negatives and the effectiveness of CTS.

397

398 Our findings also provide strong support to optimize contact tracing. In the Netherlands, CTS  
399 was based on establishing contact between an index case and a public health officer, followed  
400 by an interview after which contacts are traced. This procedure is labor intensive, time  
401 consuming, prone to recall bias, incomplete (anonymous contacts cannot be traced), and  
402 usually takes several days. Optimizing this process by improving testing and tracing capacity,  
403 removing testing barriers, and by adding app-based and/or other digital technologies to  
404 minimize tracing delay are needed to establish optimal control of transmission. These  
405 improvements are currently being implemented or considered. Overall, our findings suggest  
406 that optimized CTS, with short delays and high coverage for testing and tracing could  
407 substantially reduce the reproduction number, which would allow alleviation of more  
408 stringent control measures.

409

410 **Data availability**

411 The Mathematica code used for the analysis are available on Github under

412 <https://github.com/mirjamkretzschmar/ContacttracingModel>

413

#### 414 **Contributors**

415 MEK and MB conceived the study. MK designed and programmed the model, and produced

416 output. MvB, MCJB, and GR helped with the analysis and literature research. JvdW

417 contributed to data interpretation and writing. All authors interpreted the results, contributed

418 to writing the manuscript, and approved the final version for submission.

419

#### 420 **Declaration of interests**

421 We declare no competing interests.

422

#### 423 **Acknowledgements**

424 MEK received funding from ZonMw projects number 91216062 and number 10430022010001. GR received  
425 funding from Fundação para a Ciência e a Tecnologia project reference 131\_596787873. MB received funding  
426 from EU H2020 grant RECOVER (H2020-101003589).

427

428 We thank Patricia Bruijning-Verhagen and Hans Heesterbeek for useful discussions. This  
429 work forms part of RECOVER (*Rapid European COVID-19 Emergency Response research*).  
430 RECOVER is funded by the European Union's Horizon 2020 research and innovation  
431 programme under grant agreement No 101003589.

432

433

## 434 **References**

- 435 1. Fraser C, Riley S, Anderson RM, Ferguson NM. Factors that make an infectious  
436 disease outbreak controllable. *Proc Natl Acad Sci U S A* 2004; 101(16): 6146-51.
- 437 2. Hellewell J, Abbott S, Gimma A, et al. Feasibility of controlling COVID-19 outbreaks  
438 by isolation of cases and contacts. *Lancet Glob Health* 2020.
- 439 3. Keeling MJ, Hollingsworth TD, Read JM. The Efficacy of Contact Tracing for the  
440 Containment of the 2019 Novel Coronavirus (COVID-19). *medRxiv* 2020:  
441 2020.02.14.20023036.
- 442 4. Klinkenberg D, Fraser C, Heesterbeek H. The effectiveness of contact tracing in  
443 emerging epidemics. *PLoS One* 2006; 1: e12.
- 444 5. Kretzschmar ME, Rozhnova G, van Boven M. Isolation and contact tracing can tip  
445 the scale to containment of COVID-19 in populations with social distancing. *medRxiv* 2020:  
446 2020.03.10.20033738.
- 447 6. Muller J, Kretzschmar M, Dietz K. Contact tracing in stochastic and deterministic  
448 epidemic models. *Math Biosci* 2000; 164(1): 39-64.
- 449 7. Tang B, Wang X, Li Q, et al. Estimation of the Transmission Risk of the 2019-nCoV  
450 and Its Implication for Public Health Interventions. *J Clin Med* 2020; 9(2).
- 451 8. Salathe M, Althaus CL, Neher R, et al. COVID-19 epidemic in Switzerland: on the  
452 importance of testing, contact tracing and isolation. *Swiss Med Wkly* 2020; 150: w20225.
- 453 9. Ferretti L, Wymant C, Kendall M, et al. Quantifying SARS-CoV-2 transmission  
454 suggests epidemic control with digital contact tracing. *Science* 2020.
- 455 10. Kamel Boulos MN, Geraghty EM. Geographical tracking and mapping of  
456 coronavirus disease COVID-19/severe acute respiratory syndrome coronavirus 2 (SARS-CoV-  
457 2) epidemic and associated events around the world: how 21st century GIS technologies are

- 458 supporting the global fight against outbreaks and epidemics. *Int J Health Geogr* 2020; 19(1):  
459 8.
- 460 11. Parker MJ, Fraser C, Abeler-Dorner L, Bonsall D. Ethics of instantaneous contact  
461 tracing using mobile phone apps in the control of the COVID-19 pandemic. *J Med Ethics*  
462 2020.
- 463 12. Nguyen THD, Vu DC. Summary of the COVID-19 outbreak in Vietnam - Lessons and  
464 suggestions. *Travel Med Infect Dis* 2020: 101651.
- 465 13. Ruan L, Wen M, Zeng Q, et al. New measures for COVID-19 response: a lesson from  
466 the Wenzhou experience. *Clin Infect Dis* 2020.
- 467 14. Show evidence that apps for COVID-19 contact-tracing are secure and effective.  
468 *Nature* 2020; 580(7805): 563.
- 469 15. Peak CM, Kahn R, Grad YH, et al. Individual quarantine versus active monitoring of  
470 contacts for the mitigation of COVID-19: a modelling study. *Lancet Infect Dis* 2020.
- 471 16. Bonacic Marinovic A, Swaan C, van Steenbergen J, Kretzschmar M. Quantifying  
472 reporting timeliness to improve outbreak control. *Emerg Infect Dis* 2015; 21(2): 209-16.
- 473 17. Bonacic Marinovic AA, Koopmans M, Dittrich S, et al. Speed versus coverage trade  
474 off in targeted interventions during an outbreak. *Epidemics* 2014; 8: 28-40.
- 475 18. Swaan CM, Appels R, Kretzschmar ME, van Steenbergen JE. Timeliness of contact  
476 tracing among flight passengers for influenza A/H1N1 2009. *BMC Infect Dis* 2011; 11: 355.
- 477 19. Kretzschmar M, van den Hof S, Wallinga J, van Wijngaarden J. Ring vaccination and  
478 smallpox control. *Emerg Infect Dis* 2004; 10(5): 832-41.
- 479 20. Bi Q, Wu Y, Mei S, et al. Epidemiology and Transmission of COVID-19 in Shenzhen  
480 China: Analysis of 391 cases and 1,286 of their close contacts. medRxiv 2020:  
481 2020.03.03.20028423.

- 482 21. Chan JF, Yuan S, Kok KH, et al. A familial cluster of pneumonia associated with the  
483 2019 novel coronavirus indicating person-to-person transmission: a study of a family cluster.  
484 Lancet 2020; 395(10223): 514-23.
- 485 22. Chen N, Zhou M, Dong X, et al. Epidemiological and clinical characteristics of 99  
486 cases of 2019 novel coronavirus pneumonia in Wuhan, China: a descriptive study. Lancet  
487 2020; 395(10223): 507-13.
- 488 23. Mossong J, Hens N, Jit M, et al. Social contacts and mixing patterns relevant to the  
489 spread of infectious diseases. PLoS Med 2008; 5(3): e74.
- 490 24. Backer JA, Klinkenberg D, Wallinga J. Incubation period of 2019 novel coronavirus  
491 (2019-nCoV) infections among travellers from Wuhan, China, 20-28 January 2020. Euro  
492 Surveill 2020; 25(5).
- 493 25. Webster RK, Brooks SK, Smith LE, Woodland L, Wessely S, Rubin GJ. How to  
494 improve adherence with quarantine: rapid review of the evidence. Public Health 2020; 182:  
495 163-9.
- 496 26. Dowd JB, Andriano L, Brazel DM, et al. Demographic science aids in understanding  
497 the spread and fatality rates of COVID-19. Proc Natl Acad Sci U S A 2020; 117(18): 9696-8.
- 498 27. Prem K, Cook AR, Jit M. Projecting social contact matrices in 152 countries using  
499 contact surveys and demographic data. PLoS Comput Biol 2017; 13(9): e1005697.
- 500 28. Wang D, Hu B, Hu C, et al. Clinical Characteristics of 138 Hospitalized Patients With  
501 2019 Novel Coronavirus-Infected Pneumonia in Wuhan, China. JAMA 2020.
- 502 29. He X, Lau EHY, Wu P, et al. Temporal dynamics in viral shedding and  
503 transmissibility of COVID-19. Nat Med 2020; 26(5): 672-5.

504 30. Kucirka LM, Lauer SA, Laeyendecker O, Boon D, Lessler J. Variation in False-  
505 Negative Rate of Reverse Transcriptase Polymerase Chain Reaction-Based SARS-CoV-2 Tests  
506 by Time Since Exposure. *Ann Intern Med* 2020.  
507  
508  
509

510

511 **Table 1: Comparison Conventional CT and Mobile app CT**

	<b>Conventional CT</b>	<b>Mobile app CT</b>
<b>Testing coverage</b>	80%	20%, 40%, 60%, 80%, 100%
<b>Testing delay (<math>D_1</math>), assuming immediate isolation when testing positive</b>	4 days	0 day
<b>Time to trace close contacts (<math>D_2</math>)</b>	3 days	0 day
<b>Time to trace other contacts, assuming testing and isolation of those who test positive</b>	3 days	0 day
<b>Tracing coverage close contacts</b>	80%	20%, 40%, 60%, 80%, 100%
<b>Tracing coverage casual contacts</b>	50%	20%, 40%, 60%, 80%, 100%
<b>Time traced back</b>	7 days	7 days

512

513

514

515 **Table 2.** Percentage of onward transmissions prevented per diagnosed index case for various  
516 interventions: only isolation of the index case (left column) or isolation of the index case with tracing  
517 and isolation of 80% of infected contacts (columns 2-5).  
518  
519

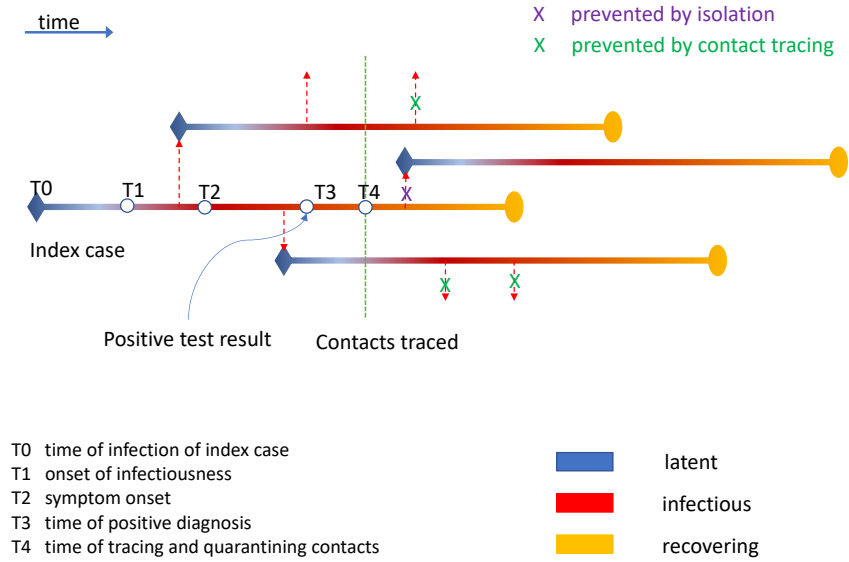
<b>Delay D<sub>1</sub> (days)</b>	<b>Isolation only</b>	<b>Contact tracing Delay D<sub>2</sub> (days)</b>			
		<b>3</b>	<b>2</b>	<b>1</b>	<b>0</b>
<b>0</b>	50.4	62.4	67.8	73.9	79.9
<b>1</b>	35.7	47.3	53.4	60.7	68.5
<b>2</b>	23.4	33.0	38.9	46.5	55.4
<b>3</b>	14.2	21.0	26.0	32.9	41.8
<b>4</b>	7.8	11.9	15.7	21.4	29.1
<b>5</b>	3.8	5.9	8.4	12.5	18.4
<b>6</b>	1.6	2.4	3.8	6.4	10.4

520



521 **Figure 1: Schematic of the contact tracing process and its time delays.**

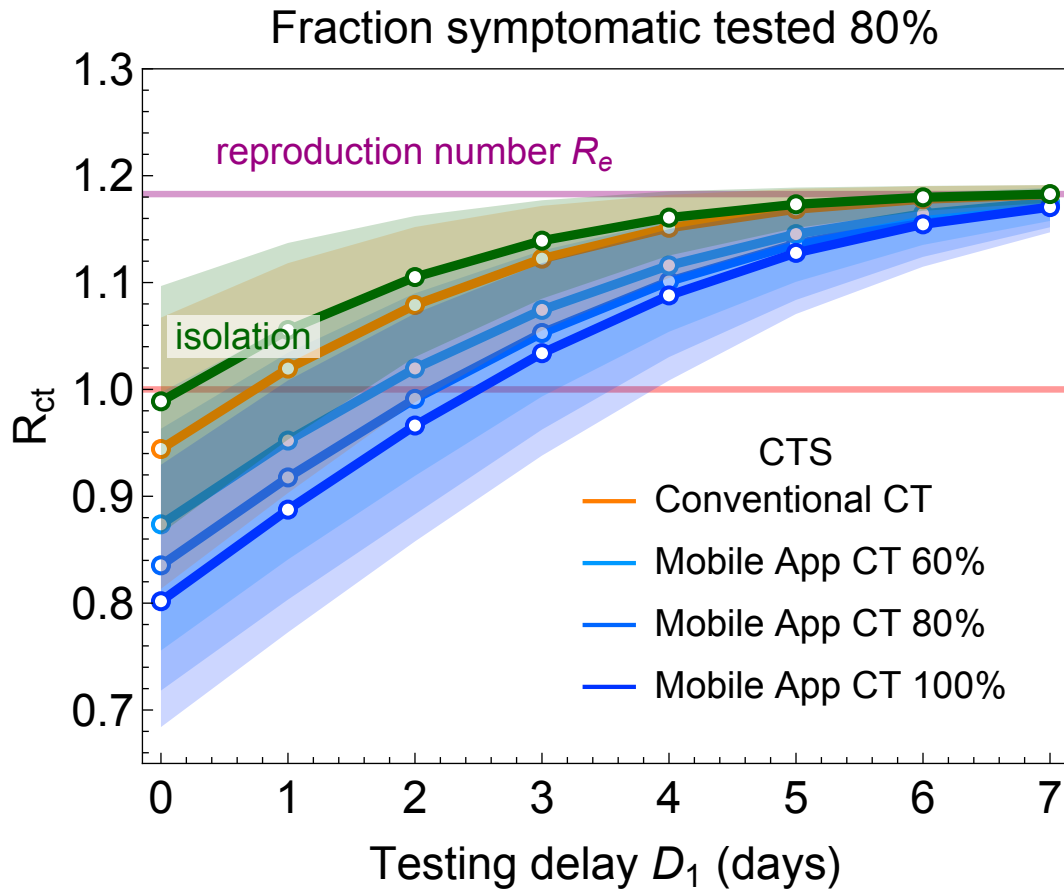
522  
523  
524  
525



526  
527  
528  
  
529  
  
530

531 **Figure 2: Comparison of a conventional and mobile app CTS.** For parameter values, see table 1.  
 532 We assumed that testing coverage is 80% for the conventional CTS and 60%, 80%, and 100% for the  
 533 mobile app CTS. For mobile app CTS it is assumed that the tracing coverage equals the testing rate,  
 534 i.e. it is 60%, 80%, and 100%, respectively. Expected reproduction numbers are shown as a function  
 535 of testing delay  $D_1$ .

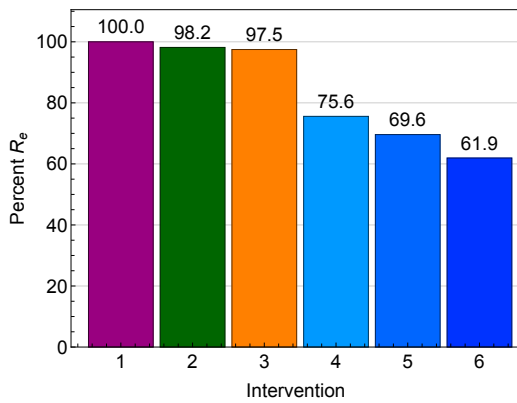
536  
 537  
 538



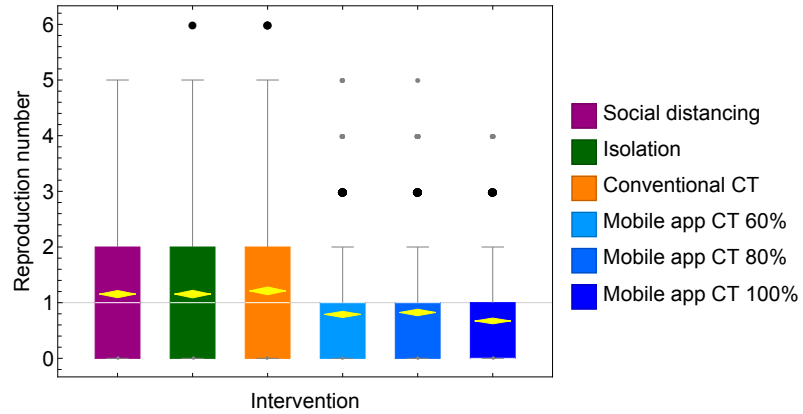
539  
 540  
 541  
 542  
 543

544 **Figure 3: The reduction of the effective reproduction number for various CTS.** (A) The  
 545 reproduction number with CTS,  $R_{cts}$ , is shown as a percentage of the reproduction number where only  
 546 social distancing is implemented ( $R_e$ ). For the isolation scenario and conventional tracing scenario we  
 547 assumed that there is a delay of 4 days between symptom onset and isolation of the index case. For  
 548 the mobile app CTS, testing delay was assumed to be 0 days. Testing coverage was assumed to be  
 549 80% in the isolation and conventional CT scenarios; app use prevalence was assumed to be 60%,  
 550 80%, and 100% in the mobile app CTS. (B) Distributions of individual reproduction numbers for  
 551 1000 individuals and the same scenarios as in (A).  
 552

553 (A)  
 554



(B)



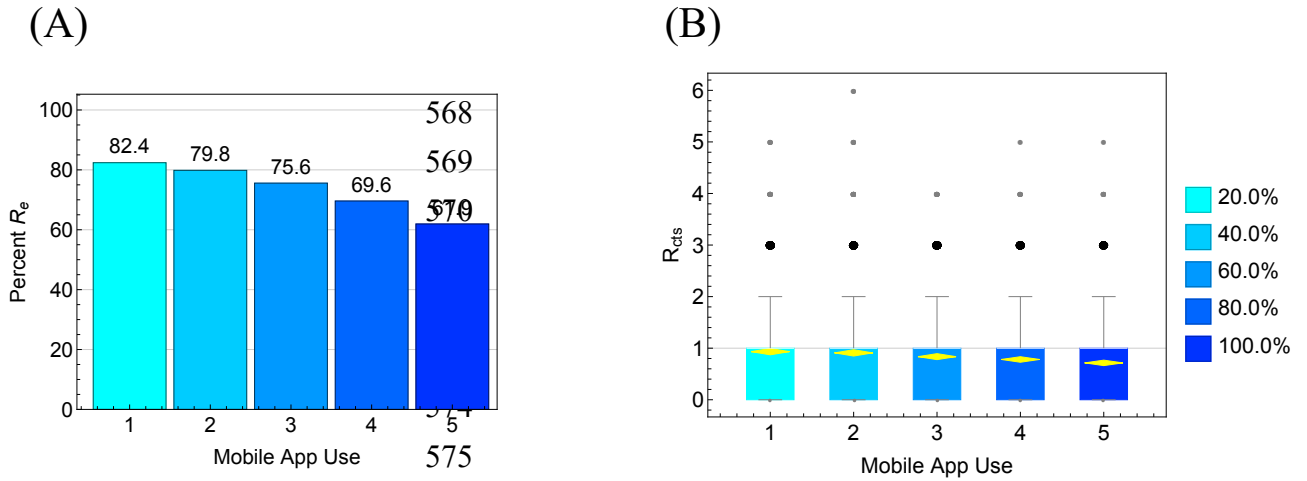
555  
 556

557

558

559 **Figure 4: The impact of mobile app use on  $R_{cts}$  for varying levels of app use.** In 4A and 4B, we  
 560 assume that there is also testing of those who do not use the mobile app, so app use only is used for  
 561 tracing contacts. In 4C and 4D, only app users, who develop symptoms, are tested. Panels A and C  
 562 show percentage reductions of  $R_e$  achieved by the CTS; panels B and D show the impact of various  
 563 CTS on distributions of individuals reproduction numbers.  
 564  
 565

566  
 567



576  
 577

