

Observational Study of Metformin and Risk of Mortality in Patients Hospitalized with Covid-19

Carolyn T. Bramante, MD, MPH;*¹ Nicholas E. Ingraham, MD;*² Thomas A. Murray, PhD;³ Schelomo Marmor, PhD, MPH;⁴ Shane Hovertsen;⁶ Jessica Gronski, PhD;⁶ Chace McNeil;⁶ Ruoying Feng, MD;² Gabriel Guzman, MD;² Nermin Abdelwahab, MD;² Samantha King, BS;⁴ Thomas Meehan, MD;² Kathryn M. Pendleton, MD;² Bradley Benson, MD;¹ Deneen Vojta, MD;*⁶ Christopher J. Tiganelli, MD*^{5,7}

*Authors contributed equally to this manuscript

Author Affiliations:

¹ Department of Medicine, University of Minnesota, Division of General Internal Medicine, Minneapolis, MN

² Department of Medicine, University of Minnesota, Division of Pulmonary, Allergy, Critical Care and Sleep Medicine, Minneapolis, MN

³ School of Public Health, University of Minnesota, Division of Biostatistics, Minneapolis, MN

⁴ Department of Surgery, University of Minnesota Division of Surgical Oncology, Minneapolis, MN

⁵ Department of Surgery, University of Minnesota Division of Acute Care Surgery, Minneapolis, MN

⁶ Research and Development, UnitedHealth Group

⁷ Institute for Health Informatics, University of Minnesota, Minneapolis, MN

Correspondence:

Carolyn T. Bramante MD, MPH
420 Delaware St SE, MMC 276
Minneapolis, MN 55455
Office: (651) 717-8915
Fax: (612) 626-0439
Email: bramante@umn.edu

Word Count: 2,791

Conflicts of Interest and Funding Source(s):

1. This research was supported by the National Heart, Lung, Blood Institute T32HL07741 (NEI)
2. This research was supported by the Agency for Healthcare Research and Quality (AHRQ) and Patient-Centered Outcomes Research Institute (PCORI), grant K12HS026379 (CJT)
3. This research was supported by the Minnesota Learning Health System Mentored Training Program (MH-LHS), M Health Fairview Institutional Funds (CTB).
4. This research was supported by the National Center for Advancing Translational Sciences, grants KL2TR002492 and UL1TR002494 (CTB)
5. This research was supported by the National Cancer Institute (NCI), grant P30CA077598.

Key Points:

Question: Metformin has many anti-inflammatory effects, including sex-specific effects on TNF α . Is metformin protective from the Sars-CoV-2 virus, and does the effect differ by sex?

Findings: Metformin was associated with reduced mortality in women who were hospitalized with Covid-19, but not in men who were hospitalized with Covid-19.

Meaning: The sex-dependent survival by metformin use points towards TNF α reduction as a key mechanism for protection from Covid-19.

Abstract

Importance: Type 2 diabetes (T2DM) and obesity are significant risk factors for mortality in Covid19. Metformin has sex specific immunomodulatory effects which may elucidate treatment mechanisms in COVID-19. **Objective:** We sought to identify whether metformin reduced mortality from Covid19 and if sex specific interactions exist.

Design: Retrospective review of de-identified claims from UnitedHealth Group's Clinical Discovery Database. Unadjusted and multivariate models were conducted to assess risk of mortality based on metformin and tumor necrosis factor alpha (TNF α) inhibitors as home medications in individuals with T2DM and obesity, controlling for comorbidities, medications, demographics, and state. Heterogeneity of effect was assessed by sex.

Setting: The database includes all 50 states in the United States. **Participants:** Persons with at least 6 months of continuous coverage from UnitedHealth Group in 2019 who were hospitalized with Covid-19. Persons in the metformin group had > 90 days of metformin claims in the 12 months before hospitalization.

Results: 6,256 persons were included; 52.8% female; mean age 75 years. Metformin was associated with decreased mortality in women by logistic regression, OR 0.792 (0.640, 0.979); mixed effects OR 0.780 (0.631, 0.965); Cox proportional-hazards: HR 0.785 (0.650, 0.951); and propensity matching, OR of 0.759 (0.601, 0.960). There was no significant reduction in mortality among men. TNF α inhibitors were associated with decreased mortality, by propensity matching in a limited model, OR 0.19 (0.0378, 0.983).

Conclusions: Metformin was significantly associated with reduced mortality in women with obesity or T2DM in observational analyses of claims data from individuals hospitalized with Covid-19. This sex-specific finding is consistent with metformin's reduction of TNF α in females over males, and suggests that metformin conveys protection in Covid-19 through TNF α effects. Prospective studies are needed to understand mechanism and causality.

Introduction

The coronavirus disease 2019 (Covid-19), caused by the severe acute respiratory syndrome coronavirus-2 (SARS-CoV-2), has spread throughout the world.¹ Despite exponential growth in Covid-19 related research, better understanding of this highly contagious and lethal virus is needed. An overall mortality rate over 5% for all patients hospitalized with Covid-19 highlights the urgent need for treatments while vaccines are developed.²

Observational data early in the outbreak identified male sex and increased age as leading risk factors in Covid-19.³ Subsequent studies have identified hypertension, diabetes, coronary artery disease, tobacco use, and obesity as important risk factors for Covid-19 outcomes.^{2,4-6} Persons hospitalized with Covid-19 with overweight or obesity (body mass index, $BMI \geq 25 \text{ kg/m}^2$) had a higher risk of needing mechanical ventilation, after controlling for diabetes, hypertension, and cardiovascular disease.⁶ Additionally, among individuals with Covid-19 and a $BMI \geq 28 \text{ kg/m}^2$, men have a higher risk of developing severe Covid-19 than women.⁷ This sex difference may be explained by the accumulation of visceral adiposity at lower BMI levels in men.⁸

Adipocytes, specifically visceral adipocytes, secrete many of the inflammatory and coagulopathic molecules that are implicated in Covid-19 morbidity, including interleukin-6 (IL-6), tumor-necrosis-factor α (TNF α), d-dimer, and others.⁹⁻¹² TNF α has been particularly important, with high levels of TNF α found in lung tissue of persons with Covid-19.¹³ TNF α contributes to insulin resistance, and levels of TNF α are higher in individuals with type 2 diabetes (T2DM).¹⁴ Both T2DM and obesity are associated with lower levels of the anti-inflammatory cytokine, IL-10.¹⁵ Metformin, the first-line medication for type 2 diabetes (T2DM) decreases TNF α and IL-6, boost levels of IL-10, and has been found to cause these beneficial effects significantly more in females more than males.¹⁶⁻²⁰ Metformin also increases activation of AMP-activated protein kinase (AMPK), which has important downstream effects in Covid-19.^{16,21,22}

Given these favorable effects of metformin on TNF α and other inflammatory cytokines that contribute to Covid-19, our primary objective was to understand whether home metformin use was associated with decreased mortality in persons hospitalized with Covid-19. We hypothesized that metformin would be associated with decreased mortality from Covid-19 in persons with T2DM or obesity, and that this benefit would be higher in women compared to men given metformin's sex-specific anti-inflammatory effects. We also hypothesized that TNF α inhibitors would be associated with decreased mortality from Covid-19. We conducted a retrospective cohort analysis of de-identified claims data from UnitedHealth Group's Clinical Discovery Database of 6,256 persons hospitalized in the US with Covid-19 in 2020.

Methods

Design and Data

Retrospective analysis of claims from UnitedHealth Group (UHG)'s Clinical Discovery Database between January 1, 2020 – June 7, 2020. This database includes de-identified individual-level and state-level data for individuals with Covid-19 admissions in all 50 U.S. states, covering a diverse range of ages, ethnicities, and geographical regions. The claims data includes medical and pharmacy claims, laboratory results, and enrollment records. This study was approved by the University of Minnesota institutional review board (STUDY00001489) which provided a waiver of consent for this study.

Population

Individuals 18 years or older with T2DM or obesity, at least 6 months of continuous enrollment in 2019, and a hospitalization for Covid-19 confirmed by polymerase chain reaction (PCR), manual chart review by UHG, or reported from the hospital to UHG. Individuals with both commercial and Medicare Advantage insurance were included. Eighteen persons (0.12%) were missing age and were excluded. An assumption was made that there was no missingness among the other variables. Individuals with T2DM or obesity were included in the analysis (definition in Supplemental Materials 1).

Outcomes

Our primary outcome was in-hospital mortality defined using the hospital disposition indicator. The individuals who remained hospitalized on June 7, 2020 without a hospital disposition were censored in Cox proportional hazards model analyses and excluded from mixed model and propensity-matched analyses. The database did not include data related to in-hospital complications, ICU, or ventilator utilization and thus an analysis on these endpoints was not possible.

Independent Variable and confounding variables

The independent variable was a filled pharmacy prescription (visible through prescription claims, matching the generic drug ingredient with the string “metformin”) indicating use of metformin, and limited to patients with at least 90 days of metformin prescription from 12 months prior to Covid-19 diagnosis. Potential confounding medications hypothesized to be protective or harmful for patients with Covid-19 determined by a large evidence-based consortium were assessed, as were possible confounding co-morbidities (Supplemental Materials 1).²³

Statistical analysis

Cohort age was expressed by median and interquartile range (IQR). Categorical variables were expressed by percentages. Univariate analysis compared mortality for persons without vs with home metformin use.

To determine whether metformin use was independently associated with reduced mortality for patients hospitalized for Covid-19, multivariable models for mortality were developed with the use of the Least absolute shrinkage and selection operator (LASSO) method,²⁴ with the tuning parameter determined by the Akaike information criterion (AIC). We also considered clinically relevant pairwise interactions to determine whether their association with mortality differed according to metformin status. The non-linear effect of age was modeled in two manners, using restricted cubic splines or categorized as (0-55, 56-65, 66-75, 76-85, 86+). Given the low mortality for patients 0-55 (5.1%) compared with other age groupings, this group was not further categorized. Subgroup analyses of multivariate models were performed by sex.

Multivariate models:

(1) Logistic regression, controlling for all covariates in our conceptual framework (Table 1), and for LASSO variables and state, with and without specific disease-medication interaction terms. (eTable 1).

(2) Mixed-effects logistic regression with state-level random effects, controlling for LASSO variables, with and without specific disease-medication interaction terms. Only patients with known hospital disposition were included in this analysis (eTable 2).

(3) Cox proportional-hazards regression by strata-specific and shared-frailty effects, with and without specific disease-medication interaction terms; censoring determined based on claims made after hospitalization up to June 7, 2020. Using a ‘best’ outcome approach, patients discharged not to hospice were assigned a censoring time equal to the longest observed hospital stay (169 days).^{25,26} Scaled Schoenfeld residual graphs and log-log plots were analyzed to confirm adequacy of the proportional hazards assumption for home metformin use (eTable 3, eFigure 1).

(4) Propensity matched mixed effects logistic regression was performed, stratified by metformin use. Propensity scores were estimated with logistic regression with variables selected by the aforementioned LASSO logistic model and two evenly matched groups were formed with the common caliper set at 0.2 (eFigure 2), and a model with exact matching.^{27,28} Even distribution of propensity scores was confirmed between matched groups, with standardized differences less than 0.1 for all confounding variables (eFigure 3). Univariate logistic regression was then used to compare mortality for persons who were receiving (vs not receiving) home metformin among the matched cohort. Kaplan-Meier survival curves were also estimated and compared using a log-rank test (Figure 2).

Sensitivity analyses were conducted in individuals with Covid-19 confirmed by PCR (n=4,105). Statistical analyses were performed using Stata MP, version 16 (StataCorp, College Station, TX). Statistical significance was defined as a two-tailed p -value < 0.05 .

Results

Characteristics of Cohort

Between Jan 1, 2020 – June 7, 2020, 15,380 individuals with pharmacy claims data and at least 6 months of enrollment were diagnosed and hospitalized with Covid-19 in UHG’s Clinical Discovery Database (Figure 1). Overall 52.8% were female, median age 70 years (IQR 58- 80). Of these, 6,256 (40.7%) had a diagnosis of obesity or T2DM, of whom 1,185 (18.9%) died; and 2,333 (37.3%) had a metformin prescription. Individuals taking metformin were younger (73 vs 76 years), more often male (51.6% versus 44.6%), and fewer died during their hospitalization for Covid-19 (17.8% vs 21.3%). Most persons taking metformin had T2DM (99.3%) and hypertension (56.3%). About 4% of persons taking metformin had asthma, 6% had chronic kidney disease, 19.5% had coronary artery disease, and 4% had liver disease. Individuals on metformin were less likely to have a history of venous thromboembolism (2.7% vs 4.1%), (Table 1). In unadjusted analyses, metformin was associated with decreased mortality, OR 0.802 (0.701, 0.917) (Table 2).

Multivariate analyses of mortality by metformin use, in men and women with T2DM or obesity

Results of multivariate analyses are presented in Table 2. Mortality associated with all the variables in the multivariate analyses are shown in Tables S1-S3. The log-log plot assessing the proportionality assumption is presented in Figure S1; the distribution of the estimated propensity-score is in Figure S2; the standardized difference in propensity-matched covariates is in Figure S3. Metformin use not associated with statistically significantly decreased mortality in the overall sample (Table 2).

Assessment for heterogeneity of effect by sex, in subgroups of women with T2DM or obesity

A Kaplan-Meier curve of survival by metformin use in men and women is shown in Figure 2. Metformin use was significantly associated with decreased mortality in women in logistic regression, OR 0.792 (0.640, 0.979); mixed effects model, OR 0.780 (0.631, 0.965); Cox proportional-hazards model, HR 0.785 (0.650, 0.951); and propensity-matched model, OR 0.759 (0.601, 0.960), (Table 2, Figure 3).

Sensitivity analyses in patients with Covid-19 disease confirmed by polymerase chain reaction

In unadjusted analyses men and women with T2DM or obesity, metformin was not significantly associated with decreased mortality, OR 0.859 (0.737, 1.002), nor by the Cox proportional hazards shared frailty model in women, HR 0.808 (0.651, 1.003). Metformin was significantly associated with decreased mortality in women with type-2 diabetes or obesity in the minimally adjusted Cox shared frailty model, OR 0.790 (0.637, 0.978), and the propensity matched model, 0.744 (0.565, 0.980).

Multivariate analysis of anti-TNF α inhibitors

Of the 15,362 persons included in the main analyses, 38 (0.25%) had claims for a TNF α inhibitor. In Cox proportional-hazards model, TNF α inhibitors were non-significantly associated with decreased mortality, HR 0.350 (0.087, 1.415). In a propensity matched model, matched for the same variables as the metformin analyses, TNF α inhibitors were non-significantly associated with decreased mortality, 0.483 (0.0821, 2.845). In a propensity model matched only on age, sex, charlson co-morbidity index, inflammatory bowel disease, rheumatoid arthritis and systemic lupus erythematosus, TNF α inhibitors were significantly associated with decreased mortality, OR 0.19 (0.038, 0.983), (Figures S4, eTable 4). A number of other variables were associated with increased or decreased risk of death from Covid-19, notably inflammatory bowel disease and asthma treated with beta2-agonists (Tables S1-S3).

Discussion

This is the first study to report decreased mortality with outpatient metformin use in women with T2DM or obesity in a large cohort of patients hospitalized in the US for Covid-19, and to describe a sex difference in this response to metformin. These findings could have wide-reaching effects, as over 42% of women in the US have obesity.²⁹ We found that metformin use was associated with significantly lower mortality among women across all multivariate analyses: logistic regression, mixed-effects analysis, Cox proportional-hazards, and propensity-matched models. The significant protective benefit in women

compared to men may shed light on the mechanism by which metformin decreases mortality from Covid-19, as metformin has been shown to reduce TNF α in females more than males.¹⁷⁻²⁰

We also found reduced mortality in persons with outpatient use of TNF α inhibitors who were hospitalized for Covid-19. TNF α inhibitor use was associated with large decreases in odds of mortality, but these findings were not statistically significant, likely because of the small sample size of 38. Reduced mortality in persons who use TNF α inhibitors would support previous research that TNF α plays a large role in the pathology of Covid-19.³⁰ TNF α leads to macrophage activation and increased cytokine release, likely contributing to Covid-19 pathology.³¹

We considered other (overlapping) mechanisms by which metformin could reduce the severity of SARS-CoV-2 infection: ACE2 receptor modulation (via AMPK), decreased cytokine release (IL6, TNF α , increased IL-10), improved neutrophil to lymphocyte ratio, decreased glycemia (via AMPK), mast cell stabilization, decreased thrombosis, and improved endothelial function.^{16-18,32-44} In patients with and without diabetes, metformin has been shown to decrease inflammatory mediators IL-6 and TNF α .^{16,43,45} These effects are notable, as IL-6 and TNF α are thought to contribute to Covid-19 pathology.¹³ Metformin's effects on these cytokines have been shown to differ by sex, with favorable effects in female over male mice, particularly for TNF α .¹⁸ Our findings of a strong sex-specific response to metformin in Covid-19 suggests that TNF α reduction may be the primary way by which metformin reduced mortality from Covid-19.

Our sex-specific findings are consistent with prior literature showing mortality benefit in women but not men from colorectal cancer.²⁰ Possible reasons for sex-specific effects of metformin include the influence of sex hormones and epigenetic changes on the Y chromosome.⁴⁶ There are 2 other potential ways in which metformin might cause sex-specific responses in Covid-19: Metformin inhibits IgE- and aryl hydrocarbon- mediated mast cell activation,⁴⁷ and mast cell activation has been implicated as an early indicator of inflammatory response to SARS-CoV2 and possibly cytokine storm.⁴⁸ Mast cells from female rats cause a greater increase in TNF α than mast cells in male rats, which could be one reason for greater

benefit from metformin in women than men.⁴⁹ Lastly, activation of AMPK by metformin can lead to increased expression of ACE2 and conformational changes to ACE2, and possibly decreasing SARS-CoV-2 binding to the ACE2 receptor.^{35-37,50} Recent work by Li et al found that expression of ACE2 receptor was equal in male and female human lungs, but that cytokine responses differed between men and women.³⁸ This difference in subsequent inflammatory response and our sex-specific findings may support metformin's anti-inflammatory effects as the primary means of benefit in Covid-19.

Additionally, in our multivariate analyses, beta2-agonist use was associated with decreased mortality in patients with asthma across all analyses (Tables S1-S3). This benefit may come from beta2-agonists' effect on boosting IL-10, which is a predominantly anti-inflammatory cytokine that can reduce levels of TNF α .⁵¹ Metformin has also been shown to boost levels of IL-10, in females more than males.^{43,45} The mortality benefit in persons with asthma on beta2-agonists, combined with our finding of mortality benefit from metformin use, suggest that IL-10 may also be important in Covid-19.

In summary, we found that metformin was associated with a significant decrease in mortality for women with T2DM or obesity who were hospitalized for Covid-19, in an observational analysis of de-identified claims. We found no significant mortality benefit in men with T2DM or obesity who were hospitalized with Covid-19. The sex-specific effects of metformin on TNF α , IL-6, and IL-10, and our findings of benefit in women, might indicate that metformin's protective effect in Covid-19 is primarily through effects on TNF α , IL-6, and IL-10. The importance of TNF α in Covid-19 is supported by our finding that TNF α inhibitor use was associated with decreased mortality from Covid-19. The fact that these outpatient medications convey benefit in patients hospitalized for Covid-19 is interesting because metformin is universally stopped at hospital admission, suggesting its protective effects begin prior to hospitalization.

Given metformin's good safety profile and availability,⁵² it should be prospectively assessed for protective benefit from Covid-19. Gastrointestinal side effects from metformin can be eliminated for over 85% of patients with use of the newer extended-release formulations, and further with administration at

the end of a meal.⁵³ With the median time to hospitalization for Covid-19 being about 1 week, it is necessary to understand the duration of metformin use that conveys benefit, and whether it prevents Covid-19. Over 34% of adults in the US have prediabetes,⁵⁴ yet it is highly under-diagnosed as over 90% of them are not aware that they do.⁵⁵ Thus metformin for prevention of Covid-19 may be reasonable as metformin may be indicated for many adults in the US anyway. Additionally, increased inflammation from adiposity, and obesity's association with increased risk of poor outcomes from Covid-19, metformin should also be assessed in patients of all BMI categories.

Limitations

Our study has several limitations. Although claims data show metformin prescribed as a home medication for at least 90 days within the last 12 months, it does not give information about adherence. Metformin is sometimes purchased without insurance claims in this population because of its low cost, thus some individuals in our control group may have been exposed to the treatment, which would reduce the observed effect size. Prescriptions for outpatient use of metformin cannot be extrapolated to starting metformin at Covid-19 diagnosis or inpatient use. Retrospective analyses are subject to biases and unmeasured confounding. While multicollinearity among potential confounders makes interpreting their independent associations with in-hospital mortality potentially difficult, adjustments for these confounders is necessary to minimize bias for estimating the causal effect of home metformin use on in-hospital mortality.^{56,57}

Conclusion

In a large de-identified claims database of adults with T2DM or obesity, metformin was associated with significantly decreased mortality in women hospitalized with Covid-19, with no significant mortality reduction in men. Mechanistic reasons that support a sex-specific reason for metformin to be protective in Covid-19 include anti-inflammatory effects on TNF α , IL-6, and possibly IL-10. We also found that TNF α inhibitors were associated with reduced mortality, this finding was not significant in all models, likely due to the small sample size. Metformin has a good safety profile,

availability, and needs to be prospectively assessed to understand mechanism, duration, and timing of treatment necessary for benefit. Given obesity's pro-inflammatory effects that contribute to Covid-19 pathology, and the potential anti-inflammatory benefit of metformin in Covid-19, metformin should also be assessed in all BMI categories.

References

1. Wang Y, Wang Y, Chen Y, Qin Q. Unique epidemiological and clinical features of the emerging 2019 novel coronavirus pneumonia (COVID-19) implicate special control measures. *J Med Virol*. 2020.
2. Mehra MR, Desai SS, Kuy S, Henry TD, Patel AN. Cardiovascular Disease, Drug Therapy, and Mortality in Covid-19. *New England Journal of Medicine*. 2020;382(25):e102.
3. Grasselli G, Zangrillo A, Zanella A, et al. Baseline Characteristics and Outcomes of 1591 Patients Infected With SARS-CoV-2 Admitted to ICUs of the Lombardy Region, Italy. *JAMA*. 2020;323(16):1574-1581.
4. Cai H. Sex difference and smoking predisposition in patients with COVID-19. *Lancet Respir Med*. 2020;8(4):e20.
5. Guan WJ, Ni ZY, Hu Y, et al. Clinical Characteristics of Coronavirus Disease 2019 in China. *The New England journal of medicine*. 2020;382(18):1708-1720.
6. Simonnet A, Chetboun M, Poissy J, et al. High prevalence of obesity in severe acute respiratory syndrome coronavirus-2 (SARS-CoV-2) requiring invasive mechanical ventilation. *Obesity (Silver Spring, Md)*. 2020.
7. Cai Q, Chen F, Wang T, et al. Obesity and COVID-19 Severity in a Designated Hospital in Shenzhen, China. *Diabetes care*. 2020;43(7):1392-1398.
8. Bosch TA, Steinberger J, Sinaiko AR, et al. Identification of sex-specific thresholds for accumulation of visceral adipose tissue in adults. *Obesity (Silver Spring, Md)*. 2015;23(2):375-382.
9. Bray GA. Medical consequences of obesity. *The Journal of clinical endocrinology and metabolism*. 2004;89(6):2583-2589.
10. Liu L, Feng J, Zhang G, et al. Visceral adipose tissue is more strongly associated with insulin resistance than subcutaneous adipose tissue in Chinese subjects with pre-diabetes. *Current medical research and opinion*. 2018;34(1):123-129.
11. Hawley PC, Hawley MP. Difficulties in diagnosing pulmonary embolism in the obese patient: a literature review. *Vasc Med*. 2011;16(6):444-451.
12. Ingraham NE, Lotfi-Emran S, Thielen BK, et al. Immunomodulation in COVID-19. *Lancet Respir Med*. 2020.
13. Tufan A, Avanoğlu Güler A, Matucci-Cerinic M. COVID-19, immune system response, hyperinflammation and repurposing antirheumatic drugs. *Turk J Med Sci*. 2020;50(Si-1):620-632.
14. Gupta-Ganguli M, Cox K, Means B, Gerling I, Solomon SS. Does Therapy With Anti-TNF- α Improve Glucose Tolerance and Control in Patients With Type 2 Diabetes? *Diabetes care*. 2011;34(7):e121-121.
15. Blüher M, Fasshauer M, Tönjes A, Kratzsch J, Schön MR, Paschke R. Association of interleukin-6, C-reactive protein, interleukin-10 and adiponectin plasma concentrations with measures of obesity, insulin sensitivity and glucose metabolism. *Exp Clin Endocrinol Diabetes*. 2005;113(9):534-537.

16. Cameron AR, Morrison VL, Levin D, et al. Anti-Inflammatory Effects of Metformin Irrespective of Diabetes Status. *Circulation research*. 2016;119(5):652-665.
17. Kelly B, Tannahill GM, Murphy MP, O'Neill LA. Metformin Inhibits the Production of Reactive Oxygen Species from NADH:Ubiquinone Oxidoreductase to Limit Induction of Interleukin-1 β (IL-1 β) and Boosts Interleukin-10 (IL-10) in Lipopolysaccharide (LPS)-activated Macrophages. *J Biol Chem*. 2015;290(33):20348-20359.
18. Matsiukevich D, Piraino G, Lahni P, et al. Metformin ameliorates gender-and age-dependent hemodynamic instability and myocardial injury in murine hemorrhagic shock. *Biochimica et Biophysica Acta (BBA) - Molecular Basis of Disease*. 2017;1863(10, Part B):2680-2691.
19. Quan H, Zhang H, Wei W, Fang T. Gender-related different effects of a combined therapy of Exenatide and Metformin on overweight or obesity patients with type 2 diabetes mellitus. *J Diabetes Complications*. 2016;30(4):686-692.
20. Park JW, Lee JH, Park YH, et al. Sex-dependent difference in the effect of metformin on colorectal cancer-specific mortality of diabetic colorectal cancer patients. *World J Gastroenterol*. 2017;23(28):5196-5205.
21. Maiese K. The Mechanistic Target of Rapamycin (mTOR): Novel Considerations as an Antiviral Treatment. *Curr Neurovasc Res*. 2020.
22. Ingraham NE, Barakat AG, Reilkoff R, et al. Understanding the Renin-Angiotensin-Aldosterone-SARS-CoV-Axis: A Comprehensive Review. *European Respiratory Journal*. 2020:2000912.
23. COVID-19 Evidenced Based Medicine. <https://sites.google.com/umn.edu/covid-19ebm/>. Published 2020. Accessed.
24. Tibshirani R. Regression Shrinkage and Selection Via the Lasso. *Journal of the Royal Statistical Society: Series B (Methodological)*. 1996;58(1):267-288.
25. Brock GN, Barnes C, Ramirez JA, Myers J. How to handle mortality when investigating length of hospital stay and time to clinical stability. *BMC Med Res Methodol*. 2011;11:144.
26. Beigel JH, Tomashek KM, Dodd LE, et al. Remdesivir for the Treatment of Covid-19 - Preliminary Report. *The New England journal of medicine*. 2020.
27. Lunt M. Selecting an appropriate caliper can be essential for achieving good balance with propensity score matching. *Am J Epidemiol*. 2014;179(2):226-235.
28. Brookhart MA, Schneeweiss S, Rothman KJ, Glynn RJ, Avorn J, Stürmer T. Variable selection for propensity score models. *Am J Epidemiol*. 2006;163(12):1149-1156.
29. Hales CM, Carroll MD, Fryar C, Ogden CL. *Prevalence of obesity and severe obesity among adults: United States, 2017-2018*. . 2020.
30. Costela-Ruiz VJ, Illescas-Montes R, Puerta-Puerta JM, Ruiz C, Melguizo-Rodríguez L. SARS-CoV-2 infection: The role of cytokines in COVID-19 disease. *Cytokine Growth Factor Rev*. 2020.
31. Parameswaran N, Patial S. Tumor necrosis factor- α signaling in macrophages. *Crit Rev Eukaryot Gene Expr*. 2010;20(2):87-103.
32. Zhou G, Myers R, Li Y, et al. Role of AMP-activated protein kinase in mechanism of metformin action. *The Journal of Clinical Investigation*. 2001;108(8):1167-1174.
33. Rena G, Hardie DG, Pearson ER. The mechanisms of action of metformin. *Diabetologia*. 2017;60(9):1577-1585.
34. Bode B, Garrett V, Messler J, et al. Glycemic Characteristics and Clinical Outcomes of COVID-19 Patients Hospitalized in the United States. *Journal of diabetes science and technology*. 2020:1932296820924469.
35. Liu J, Li X, Lu Q, et al. AMPK: a balancer of the renin-angiotensin system. *Bioscience Reports*. 2019;39(9).
36. Plattner F, Bibb JA. Chapter 25 - Serine and Threonine Phosphorylation. In: Brady ST, Siegel GJ, Albers RW, Price DL, eds. *Basic Neurochemistry (Eighth Edition)*. New York: Academic Press; 2012:467-492.

37. Sharma S, Ray A, Sadasivam B. Metformin in COVID-19: A possible role beyond diabetes. *Diabetes Res Clin Pract.* 2020;164:108183.
38. Li M-Y, Li L, Zhang Y, Wang X-S. Expression of the SARS-CoV-2 cell receptor gene ACE2 in a wide variety of human tissues. *Infectious Diseases of Poverty.* 2020;9(1):45.
39. Jadhav S, Ferrell W, Greer IA, Petrie JR, Cobbe SM, Sattar N. Effects of metformin on microvascular function and exercise tolerance in women with angina and normal coronary arteries: a randomized, double-blind, placebo-controlled study. *Journal of the American College of Cardiology.* 2006;48(5):956-963.
40. Chen R, Sang L, Jiang M, et al. Longitudinal hematologic and immunologic variations associated with the progression of COVID-19 patients in China. *J Allergy Clin Immunol.* 2020.
41. Zeng F, Li L, Zeng J, et al. Can we predict the severity of COVID-19 with a routine blood test? *Pol Arch Intern Med.* 2020.
42. Almeida VH, Rondon AMR, Gomes T, Monteiro RQ. Novel Aspects of Extracellular Vesicles as Mediators of Cancer-Associated Thrombosis. *Cells.* 2019;8(7). doi:10.3390/cells8070716. Accessed 2019/07//.
43. Berlin DA, Gulick RM, Martinez FJ. Severe Covid-19. *New England Journal of Medicine.* 2020.
44. Mehta P, McAuley DF, Brown M, Sanchez E, Tattersall RS, Manson JJ. COVID-19: consider cytokine storm syndromes and immunosuppression. *Lancet (London, England).* 2020;395(10229):1033-1034.
45. Mehta P, McAuley DF, Brown M, et al. COVID-19: consider cytokine storm syndromes and immunosuppression. *Lancet.* 2020;395(10229):1033-1034.
46. Klein SL, Flanagan KL. Sex differences in immune responses. *Nature Reviews Immunology.* 2016;16(10):626-638.
47. Wang HC, Huang SK. Metformin inhibits IgE- and aryl hydrocarbon receptor-mediated mast cell activation in vitro and in vivo. *Eur J Immunol.* 2018;48(12):1989-1996.
48. Kritas SK, Ronconi G, Caraffa A, Gallenga CE, Ross R, Conti P. Mast cells contribute to coronavirus-induced inflammation: new anti-inflammatory strategy. *J Biol Regul Homeost Agents.* 2020;34(1).
49. Mackey E, Ayyadurai S, Pohl CS, S DC, Li Y, Moeser AJ. Sexual dimorphism in the mast cell transcriptome and the pathophysiological responses to immunological and psychological stress. *Biol Sex Differ.* 2016;7:60.
50. Tignanelli CJ, Ingraham NE, Sparks MA, et al. Antihypertensive drugs and risk of COVID-19? *Lancet Respir Med.* 2020.
51. Izeboud CA, Vermeulen RM, Zwart A, Voss HP, van Miert AS, Witkamp RF. Stereoselectivity at the beta2-adrenoceptor on macrophages is a major determinant of the anti-inflammatory effects of beta2-agonists. *Naunyn Schmiedebergs Arch Pharmacol.* 2000;362(2):184-189.
52. Flory J, Lipska K. Metformin in 2019. *JAMA.* 2019;321(19):1926-1927.
53. Henry RR, Frias JP, Walsh B, et al. Improved glycemic control with minimal systemic metformin exposure: Effects of Metformin Delayed-Release (Metformin DR) targeting the lower bowel over 16 weeks in a randomized trial in subjects with type 2 diabetes. *PloS one.* 2018;13(9):e0203946.
54. CDC. Prediabetes. <https://www.cdc.gov/diabetes/data/statistics/statistics-report.html>. Accessed June 21, 2020.
55. Tseng E, Greer RC, O'Rourke P, et al. National Survey of Primary Care Physicians' Knowledge, Practices, and Perceptions of Prediabetes. *Journal of general internal medicine.* 2019;34(11):2475-2481.
56. O'Brien RM. Dropping Highly Collinear Variables from a Model: Why it Typically is Not a Good Idea*. *Social Science Quarterly.* 2017;98(1):360-375.
57. Schisterman EF, Perkins NJ, Mumford SL, Ahrens KA, Mitchell EM. Collinearity and Causal Diagrams: A Lesson on the Importance of Model Specification. *Epidemiology (Cambridge, Mass).* 2017;28(1):47-53.

Figure Legends:

Figure 1: This is a flow diagram representing how patients were selected into the analysis.

Figure 2: This is a Kaplan-Meier survival curve. The top panel compares metformin use to no metformin use in males only. The bottom panel compares metformin use to no metformin use in females only. In both panels, the blue line represents no metformin use and the red line represent metformin use. The Y axis is survival, the X axis is hospital days.

Figure 3. Bar graph comparing survival among women and among men, comparing those without metformin to those with metformin. The left two columns are women, without and with metformin, analyzed by cox proportional hazards. The 3rd and 4th columns (blue) are men, without and with metformin, analyzed by Cox proportional-hazards. The 5th and 6th columns (light orange), are women, without and with metformin, analyzed by propensity matching. The 7th and 8th columns (blue) are men, without and with metformin, analyzed by propensity matching.

eFigure 1. A log-log plot assessing the proportionality assumption. The blue line represents no metformin use, the red line represents metformin use.

eFigure 2. A balance of matching of covariates in the propensity models. The blue represents no metformin use, the red line represents metformin use in all panels. The top left panel is the overall sample. The bottom left panel is women with type 2 diabetes or obesity. The bottom right panel is men with type 2 diabetes or obesity. The top right panel is among patients with home TNF-alpha inhibitor use.

eFigure 3. A forest line plot comparing standardized differences between covariates in the sample in the propensity matched models. The red line represents before matching and the blue line presents after matching.

eFigure 4. Kaplan Meier survival curve comparing patients on home TNF-alpha inhibitors to those not on TNF-alpha inhibitors. The top panel shows survival when matched on all variables identified by LASSO. The bottom panel shows survival when matching on variables clinically relevant to TNF-alpha inhibitor use (age, gender, charlson comorbidity score, state, presence of systemic lupus erythematosus, inflammatory bowel disease, rheumatoid arthritis. The y axis is probability of survival, the x axis is number of days in the hospital. The blue line represents no TNF-alpha inhibitor use, the red line represents TNF-alpha inhibitor use.

Table 1: Demographic and clinical characteristics of patients hospitalized for Covid-19 with 6 months of continuous insurance coverage in 2019, comparing those on home metformin to those not on metformin.

Demographic characteristics	Metformin	
	No (n=3,923)	Yes (n=2,333)
Age, median (inter-quartile range)	76.0 (67.0, 84.0)	73.0 (66.0, 80.0)
Age under 56 years, n (%)	266 (6.8%)	186 (8.0%)
Age 56-65 years	535 (13.6%)	387 (16.6%)
Age 66-75 years	1112 (28.3%)	808 (34.6%)
Age 76-85 years	1234 (31.5%)	694 (29.7%)
Age > 85 years	776 (19.8%)	258 (11.1%)
Female sex, n (%)	2,173 (55.4%)	1,129 (48.4%)
Transfer, ^b n (%)	705 (18.0%)	418 (17.9%)
Pre-existing Conditions, n (%)		
Type 2 Diabetes	3719 (94.8%)	2316 (99.3%)
Type 1 Diabetes	278 (7.1%)	108 (4.6%)
Essential hypertension	2370 (60.4%)	1314 (56.3%)
Tobacco	8 (0.2%)	5 (0.2%)
Coronary artery disease	864 (22.0%)	456 (19.5%)
Heart failure with preserved ejection fraction	346 (8.8%)	121 (5.2%)
Heart failure with reduced ejection fraction	344 (8.8%)	133 (5.7%)
Heart failure, unspecified	659 (16.8%)	239 (10.2%)
Liver disease	160 (4.1%)	102 (4.4%)
Venous thromboembolism	161 (4.1%)	62 (2.7%)
Neutropenia	9 (0.2%)	5 (0.2%)
Cancer	441 (11.2%)	281 (12.0%)
Coagulation defect	54 (1.4%)	14 (0.6%)
Valve Repair	33 (0.8%)	17 (0.7%)
Chronic obstructive pulmonary disease	688 (17.5%)	305 (13.1%)
Interstitial lung disease	70 (1.8%)	33 (1.4%)
Chronic kidney disease, stage 3, 4	729 (18.6%)	147 (6.3%)
Chronic kidney disease, unspecified	527 (13.4%)	219 (9.4%)

End stage renal disease	297 (7.6%)	14 (0.6%)
Atrial fibrillation	630 (16.1%)	290 (12.4%)
Cerebrovascular accident/transient ischemic attack	432 (11.0%)	207 (8.9%)
Alcohol abuse	43 (1.1%)	17 (0.7%)
Human immunodeficiency virus (HIV)	18 (0.5%)	18 (0.8%)
Asthma	166 (4.2%)	96 (4.1%)
General influenza	65 (1.7%)	35 (1.5%)
Swine, avian influenza	17 (0.4%)	12 (0.5%)
Inflammatory bowel disease	28 (0.7%)	11 (0.5%)
Systemic lupus erythematosus, rheumatoid arthritis	73 (1.9%)	27 (1.2%)
Dementia	663 (16.9%)	273 (11.7%)
Charlson comorbidity index, median score (IQR)	5.0 (3.0, 7.0)	4.0 (3.0, 6.0)
Diabetes complications severity index, median (IQR)	2.0 (1.0, 4.0)	2.0 (0.0, 3.0)
Death	791 (21.3%)	394 (17.8%)
Body Mass Index Category		
Absence of any weight-related code	3548 (90.4%)	2215 (94.9%)
Overweight (BMI 25-30)	21 (0.5%)	7 (0.3%)
Class I obesity (BMI 31-35)	35 (0.9%)	10 (0.4%)
Class II obesity (BMI 36-40)	20 (0.5%)	6 (0.3%)
Class III obesity (BMI 40+)	190 (4.8%)	62 (2.7%)
Obesity unspecified	109 (2.8%)	33 (1.4%)
Medications		
Ursodiol	8 (0.2%)	2 (0.1%)
Angiotensin-converting enzyme inhibitors	1069 (27.2%)	912 (39.1%)
Angiotensin II receptor blocker	1003 (25.6%)	731 (31.3%)
Statin	2591 (66.0%)	1860 (79.7%)
Antiplatelet	618 (15.8%)	342 (14.7%)
Anticoagulation	808 (20.6%)	407 (17.4%)
Tenofovir	5 (0.1%)	5 (0.2%)
Highly Active Antiretroviral Therapy (HAART)	16 (0.4%)	14 (0.6%)
Azithromycin	541 (13.8%)	321 (13.8%)
Second line diabetes medications	27 (0.7%)	35 (1.5%)
Insulin	1564 (39.9%)	783 (33.6%)
Steroids	1010 (25.7%)	546 (23.4%)

Hydroxychloroquine	47 (1.2%)	14 (0.6%)
Janus Kinase Inhibitors	3 (0.1%)	1 (<1%)
Calcineurin Inhibitors	85 (2.2%)	31 (1.3%)
mTor Inhibitor	1 (<1%)	0 (0.0%)
Beta Blocker	2136 (54.4%)	1213 (52.0%)
Ivermectin	35 (0.9%)	13 (0.6%)
Beta2 Agonist	1233 (31.4%)	608 (26.1%)
Allopurinol	400 (10.2%)	189 (8.1%)
Azathioprine & Mycophenolate mofetil	42 (1.1%)	13 (0.6%)
Montelukast	289 (7.4%)	181 (7.8%)
Nonsteroidal anti-inflammatory drugs	362 (9.2%)	316 (13.5%)
Diuretics	1604 (40.9%)	670 (28.7%)
Mast cell stabilizer	65 (1.7%)	41 (1.8%)
Valacyclovir, acyclovir, valgancyclovir	129 (3.3%)	72 (3.1%)

^a Transfer represents inter-hospital transfer during the hospitalization for COVID-19.

Table 2. Association between home metformin use and mortality in unadjusted and adjusted analyses in patients with type 2 diabetes or obesity, hospitalized for Covid-19 (confirmed or presumed).^a

Primary analyses, overall population		Odds Ratio (95% CI)
Unadjusted		0.802 (0.701, 0.917)
Logistic regression with full covariate list (Table 1)		0.911 (0.784, 1.060)
Logistic regression with Lasso selection variables ^b		0.904 (0.782, 1.045)
Mixed Effects Model ^b		0.898 (0.777, 1.038)
Cox proportional-hazards, HR, stratified model ^b		0.887 (0.782, 1.008)
Cox proportional-hazards, HR, shared frailty model ^b		0.884 (0.778, 1.003)
Propensity Matched Model, ^c exact matching		0.912 (0.777, 1.071)
Log-rank test		0.146
Propensity Matched Model, caliper 0.2 ^c		0.898 (0.768, 1.051)
Log-rank test		0.096
Subgroup analysis in females		
Logistic regression ^b		0.792 (0.640, 0.979)
With disease-medication interaction terms ^d		0.788 (0.637, 0.975)
Mixed Effects Model ^b		0.780 (0.631, 0.965)
With disease-medication interaction terms ^d		0.780 (0.631, 0.965)
Cox proportional-hazards, HR, shared frailty model ^b		0.785 (0.650, 0.951)
With disease-medication interaction terms ^d		0.782 (0.646, 0.947)
Propensity Matched Model, ^c caliper 0.2		0.759 (0.601, 0.960)
Log-rank test		0.015
Sensitivity analyses in females with Covid-19 confirmed by polymerase chain reaction		
Cox proportional-hazards, HR, shared frailty model ^b		0.808 (0.651, 1.003)
Cox proportional-hazards, HR, shared frailty model ^c		0.790 (0.637, 0.978)
Propensity Matched Model, ^c		0.744 (0.565, 0.980)
Log-rank test		0.019

^aIn patients with >6 months continuous coverage in 2019 and 90 days of metformin use.

^bAdjusted for variables selected by Lasso: age, sex (in overall, not in subgroups by sex), comorbidities (hypertension, tobacco use, venous thromboembolism, neutropenia, chronic obstructive pulmonary disease, chronic kidney disease, alcohol abuse, HIV, asthma, inflammatory bowel disease, dementia, charlson comorbidity index, and the diabetes complications and severity index); and medications (ursodiol, angiotensin converting enzyme inhibitors (ACEi), angiotensin receptor blockers (ARB), steroids, ivermectin, beta2agonists, mast cell stabilizers, allopurinol, azathioprine, mycophenolate mofetil), and state. ^c Matched on the same variables as the Logistic, Mixed effects, and Cox models.

^dHypertension with ACEi, ARB use; Asthma with beta2-agonist use

^eAdjusted only for age and co-morbidity indices.

Figure 1: Study diagram detailing selection of patients in United Healthcare Covid-19 Database

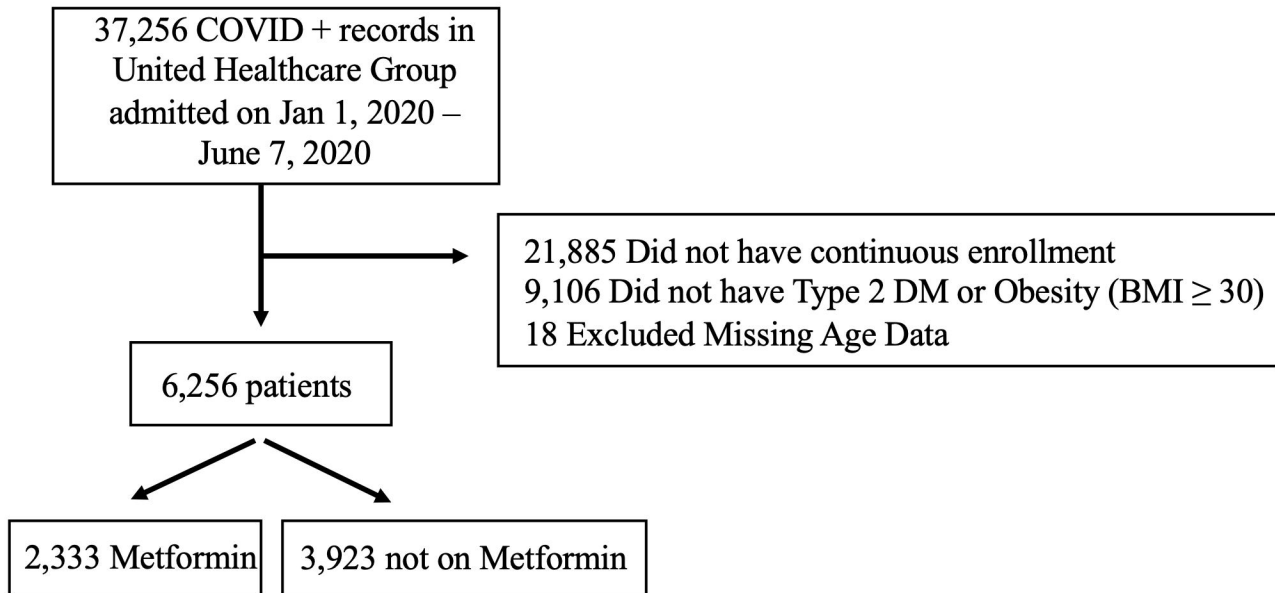
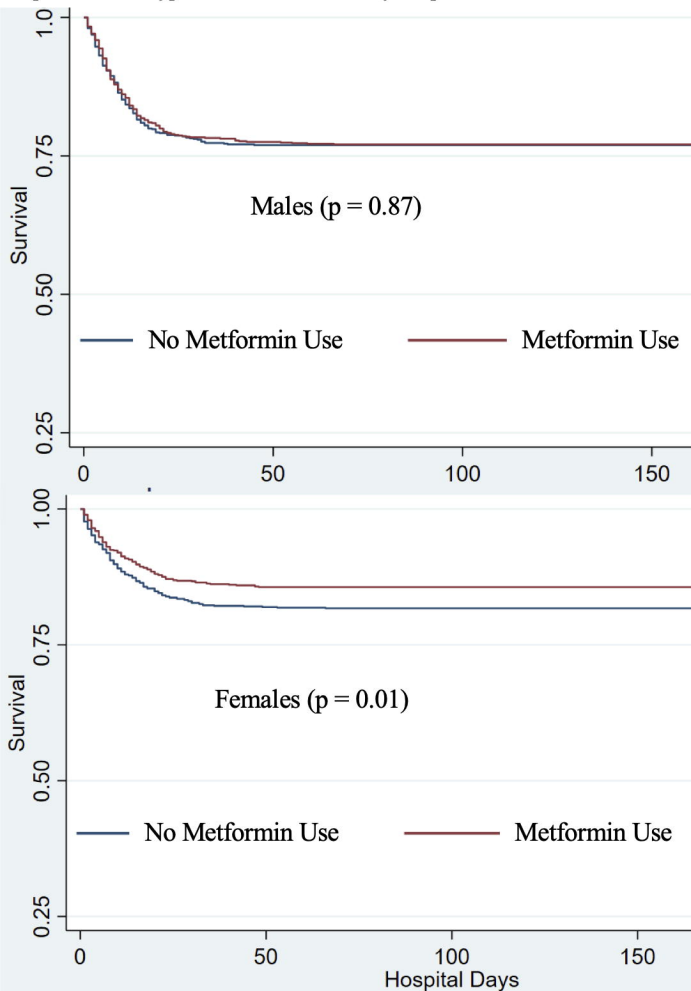
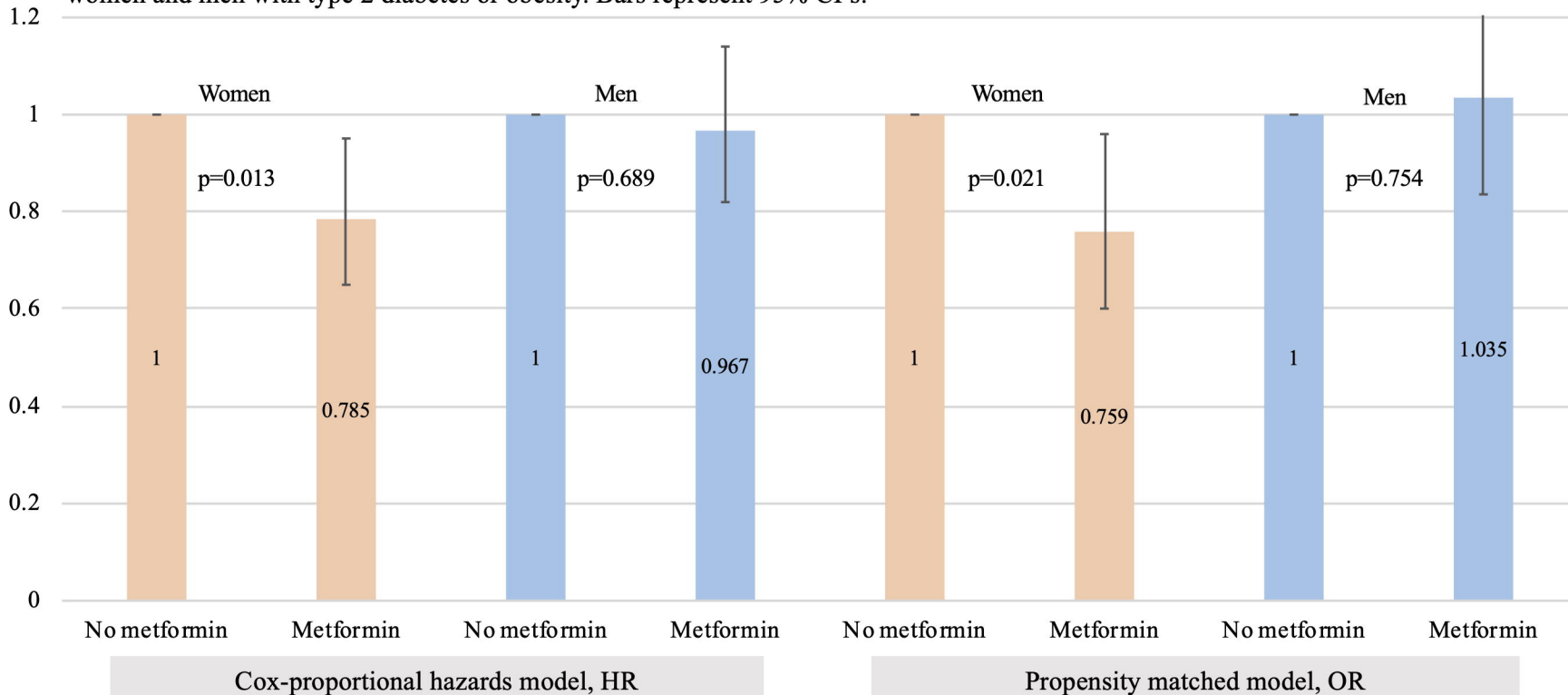


Figure 2. Kaplan Meier curve by metformin use, with propensity matching in persons with type 2 diabetes and obesity hospitalized for Covid-19.*

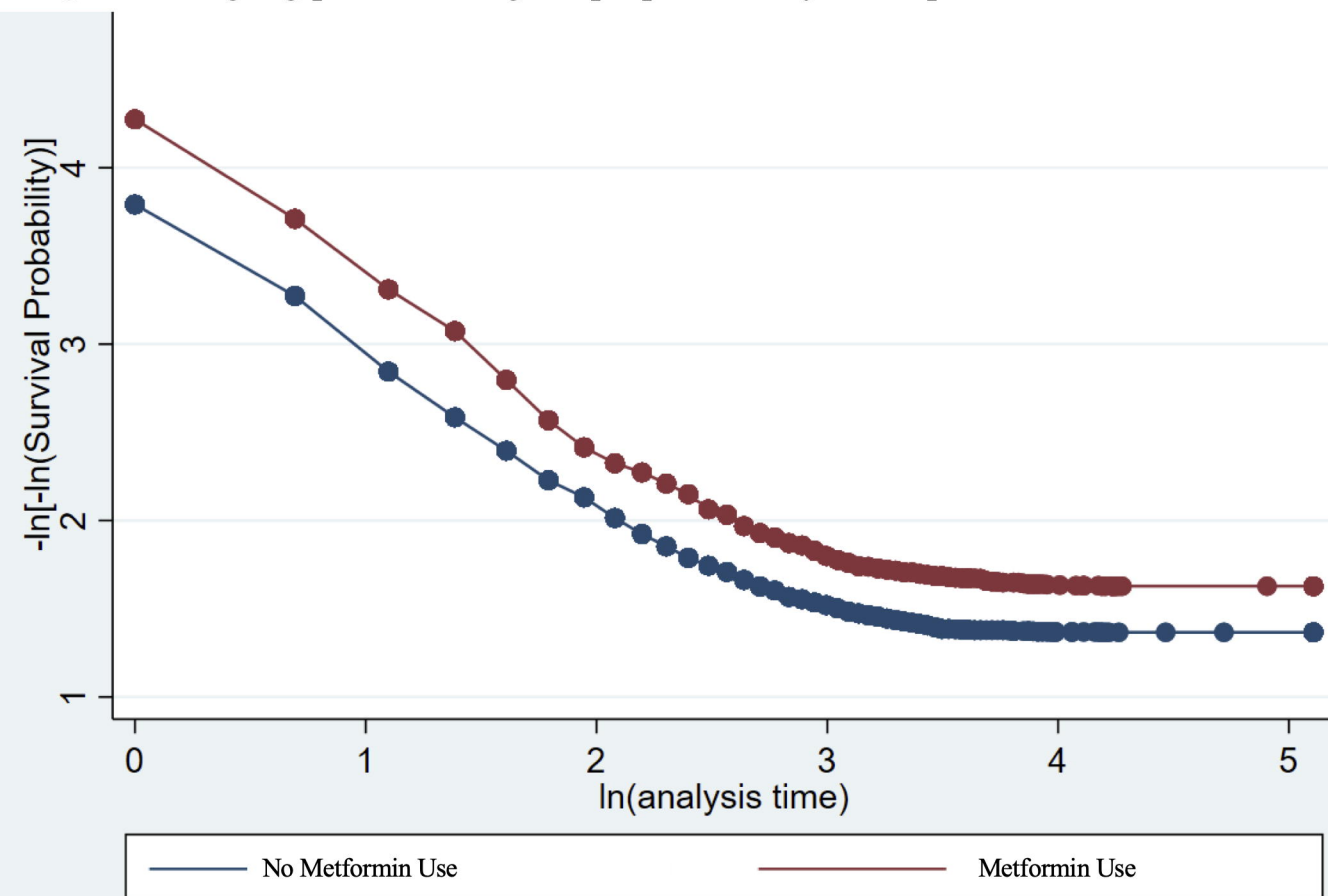


*With variables selected by LASSO with AIC, matching caliper 0.2

Figure 3. Subgroup analysis of mortality associated with metformin use vs no metformin use in hospitalizations for Covid-19, among women and men with type 2 diabetes or obesity. Bars represent 95% CI's.

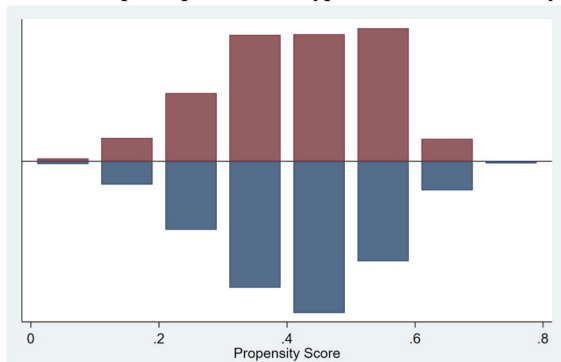


eFigure 1. Log log plot assessing the proportionality assumption

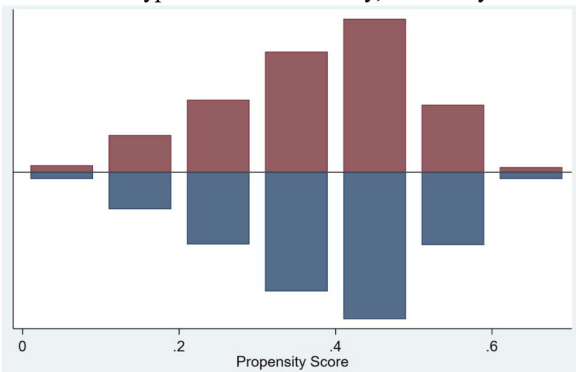


eFigure 2. Balance of matching with caliper 0.2

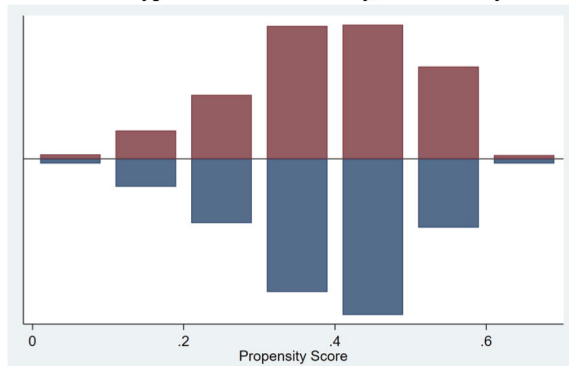
Overall sample of persons with type 2 diabetes and obesity:



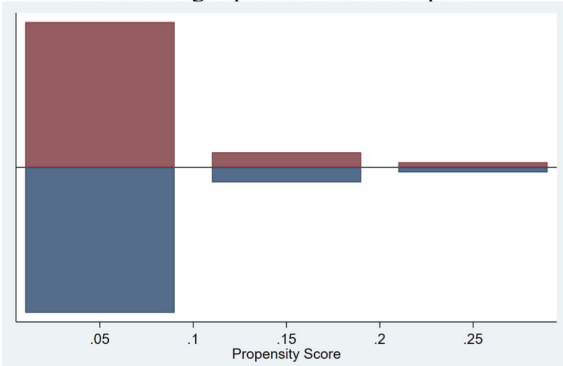
Persons with type 2 diabetes or obesity, males only:



Persons with type 2 diabetes or obesity, females only:



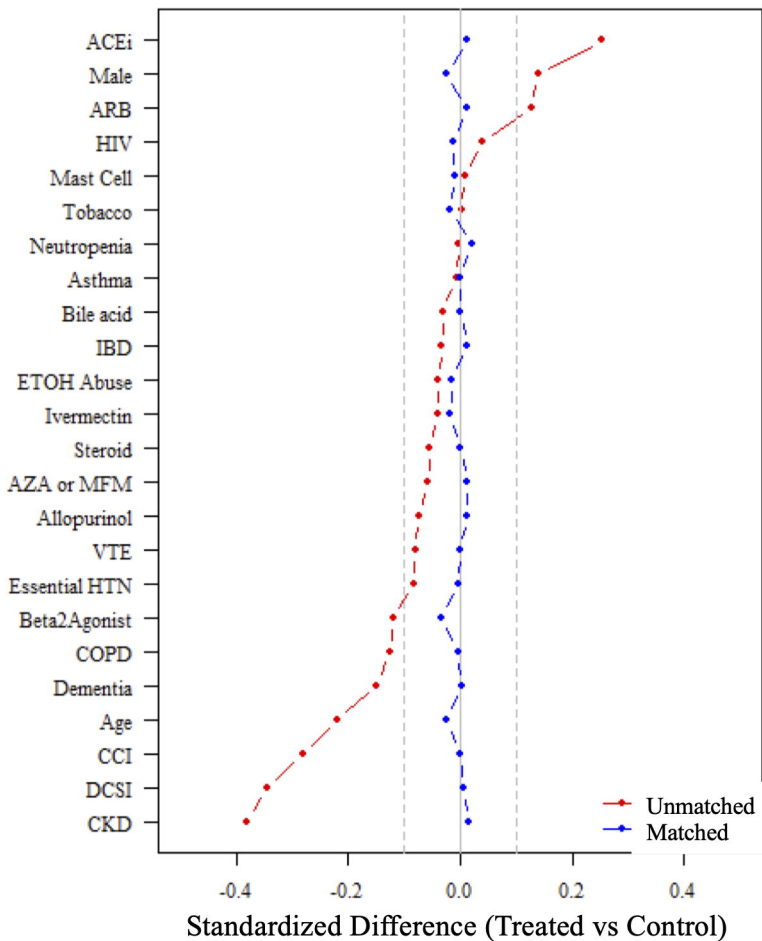
Balance of matching in persons with TNF-alpha:



No Metformin use

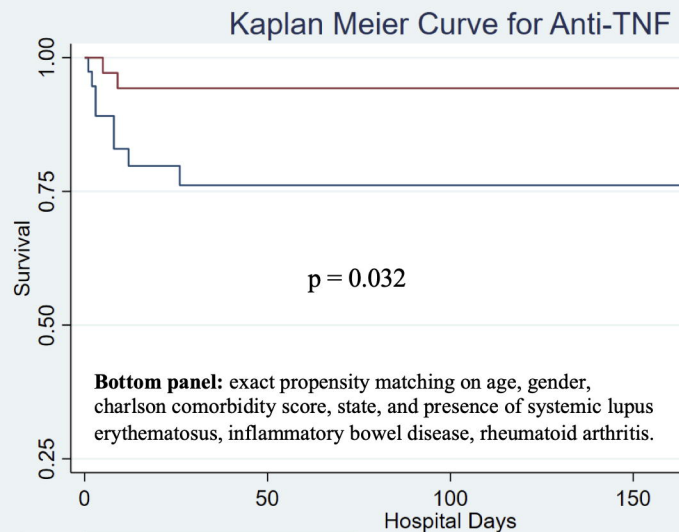
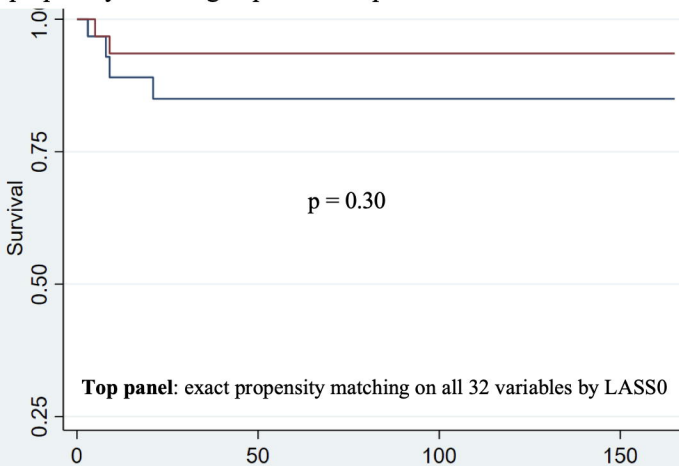
Metformin use

eFigure 3. Propensity matched covariate balance



Abbreviations: ACEi=angiotensin converting enzyme inhibitor; ARB=angiotensin 2 receptor blocker; IBD=inflammatory bowel disease; ETOH=alcohol; AZA=azathioprine; MFM=mycophenolate mofetil; VTE=venous thromboembolism; HTN=hypertension; COPD=chronic obstructive pulmonary disease; CCI=charlson comorbidity index; DCSI=diabetes complications and severity index; CKD=chronic kidney disease.

eFigure 4. Kaplan Meier curve by TNF-alpha inhibitor use, with propensity matching in persons hospitalized for Covid-19.



— No TNF-alpha inhibitor use

— TNF-alpha inhibitor use