

1 **Circulating CD34⁺ Progenitor Cells are Predictive of All-Cause and**
2 **Cardiovascular Mortality and are Influenced by Physical Activity.**

3

4 David Muggeridge^a, Jennifer Dodd^b, Mark D. Ross^b

5

6 ^aInstitute of Health Research & Innovation, Division of Biomedical Science,

7 University of the Highlands and Islands, Inverness, UK

8 ^bSchool of Applied Sciences, Edinburgh Napier University, Edinburgh, United

9 Kingdom

10

11 **Running Title:** Circulating progenitor cells predict mortality and are influenced by
12 physical activity

13

14 **Corresponding Author:**

15 Dr. Mark Ross

16 Edinburgh Napier University

17 School of Applied Sciences

18 Sighthill Campus

19 2.B.38

20 EH11 4BN

21 M.Ross@napier.ac.uk

22 0131 455 2487

23 Twitter: @mross013

24

25

26 **Abstract**

27

28 *Background:* Circulating progenitor cells (CPCs) play an important role in vascular
29 repair and may influence cardiovascular (CV) health and longevity. Exercise is
30 known to modulate these cells via mobilization from the bone marrow. The primary
31 aims of this study were to evaluate the association of CPCs with mortality and explore
32 the association between physical activity (PA) and CPCs.

33

34 *Design:* We studied 1,751 individuals from the Framingham Offspring cohort (66 ± 9
35 years [40-92 years], 54% female). CPCs ($CD34^+$, $CD34^+CD133^+$,
36 $CD34^+CD133^+KDR^+$) were measured in participants using flow cytometry.

37 Multivariable cox regression analyses were performed to investigate relationship of
38 CPCs with future CV event, CV mortality and all-cause mortality. Multivariate
39 regression analyses were performed to determine the relationship between self-
40 reported PA and CPC counts.

41

42 *Results:* Following adjustment for standard risk factors, there was an inverse
43 association between $CD34^+$ CPCs and all-cause mortality (hazard ratio (HR) per unit
44 increase in $CD34^+$, 0.79; 95% CI 0.64 – 0.98, $P=0.036$). $CD34^+CD133^+$ CPCs were
45 inversely associated with CV mortality (HR 0.63, 95% CI 0.44 – 0.91, $P=0.013$).

46 Associations of $CD34^+$ and $CD34^+CD133^+$ with mortality were strongest in
47 participants with pre-existing CVD. PA was associated with $CD34^+$ CPCs only in
48 CVD participants. This relationship was maintained after adjustment for confounding
49 variables.

50

51 *Conclusions:* Higher number of CD34⁺ and CD34⁺ CD133⁺ CPCs were inversely
52 associated with all-cause and CV mortality. These associations were strongest in
53 participants already diagnosed with CVD. PA is independently associated with CD34⁺
54 CPCs in individuals with CVD only, suggestive of greater benefit for this population
55 group.

56

57

58 **Abstract Word Count:** 249

59

60 **Key Words:** Stem Cells, Mortality, Cardiovascular Diseases, Exercise

61 **Introduction**

62

63 Circulating progenitor cells (CPC) are a heterogenous group of cells which have
64 tissue regenerative potential. A number of studies have shown that CD34⁺ CPCs and
65 several subsets of CD34⁺ cells (such as CD34⁺CD133⁺/KDR⁺) can participate in
66 vascular repair and growth^{1,2}, and may be associated with vascular endothelial
67 function³. Therefore these cells may reflect vascular integrity and have been used as
68 vascular biomarkers of repair⁴.

69

70 Low number of these CPCs are associated with vascular dysfunction^{3,5} and
71 subsequent greater cardiovascular (CV) risk⁶. Observational studies have shown that
72 individuals with cardiovascular disease (CVD) exhibit lower number and angiogenic
73 function of these CPCs⁷, reflecting reduced vascular repair capacity. Studies have
74 demonstrated that in individuals hospitalized with heart failure⁸, or with acute
75 coronary syndromes⁹, low number of CD34⁺ CPCs predict earlier mortality in these
76 patients compared to patients with high numbers of CD34⁺ CPCs, which suggests
77 impaired vascular repair capacity in those with higher mortality risk. Whilst there are
78 no studies that have investigated the role of CD34⁺ CPCs and associated subsets in
79 predicting clinical endpoints in a heterogenous human population, there is evidence to
80 suggest that these CPCs are reflective of subclinical atherosclerotic risk in an
81 apparently healthy population⁷.

82

83 Lifestyle behaviors can significantly affect CV health. Smoking, physical inactivity
84 and obesity are associated with perturbed vascular health, leading to greater risk of
85 mortality. Physical activity, known for its effect on improving vascular function¹⁰

86 may do so in part via modulating CPC content and/or function. Studies investigating
87 acute¹¹ and chronic exercise training¹² have demonstrated that progenitor cells can
88 be mobilized into peripheral blood compartment in humans, where they can exert
89 their vasoreparative functions. However, the efficacy of exercise training to promote
90 progenitor cell number has been argued, with recent evidence demonstrating little or
91 no change in CPC number in humans after exercise training⁴. As yet, there is no
92 evidence from large cohorts investigating the association between physical activity
93 and CPCs.

94

95 The primary aim of this study was to investigate the prognostic potential of CD34⁺
96 CPCs on all-cause and CV mortality. Furthermore, we investigated the relationship
97 between self-reported physical activity on CPCs in a large cohort. We hypothesized
98 that circulating CD34⁺ CPCs and subpopulations would predict mortality, and that
99 these cells are associated with self-reported physical activity levels.

100

101 **Methods**

102

103 **Study Sample**

104

105 The Framingham Heart Study (FHS) is a longitudinal community-based cohort set up
106 in 1948 under the direction of the National Heart, Lung, and Blood Institute (NHLBI)
107 aimed to determine factors that contribute to the onset and progression of
108 cardiovascular disease (CVD)¹³. Subsequently, an Offspring cohort was included
109 from 1971¹⁴. Participants (n=3,002) in the Framingham Offspring cohort who
110 attended the 8th examination cycle (2004-2008) were eligible for our investigation,

111 with n=1,751 included in the study due to availability of key data. Participant
112 characteristics are shown in **Table 1**.

113

114 This study complies with the Declaration of Helsinki. Ethical approval for all data
115 collection and research purposes was granted by Boston University Medical Centre,
116 and consent was obtained for the collection and use of the data available for
117 secondary investigators. Edinburgh Napier University Research Ethics and Integrity
118 Committee approved of the use of the secondary dataset for the purposes of the study.

119

120 **Clinical Assessment**

121

122 All participants underwent a clinical and risk factor assessment including assessment
123 of blood pressure, height and body mass. Fasting blood samples were drawn for
124 quantification of glucose, glycated hemoglobin (HbA1c), total cholesterol, and high
125 density lipoprotein cholesterol (HDL-C), and triglycerides.

126

127 **Quantification of Circulating Progenitor Cells**

128

129 Blood samples were collected from participants in the fasted state to quantify CPC
130 counts. Blood samples were centrifuged and the peripheral blood mononuclear cells
131 (PBMCs) were isolated for cell phenotyping as previously described¹⁵. PBMCs were
132 stained with anti-CD34 FITC, anti-CD133 APC and anti-KDR-PE antibodies (all BD
133 Biosciences). CD34⁺ cells were gated for subsequent expression of CD133 and finally
134 KDR. Total progenitor cells are defined as CD34⁺ cells, and EPCs are defined as
135 CD34⁺CD133⁺ and CD34⁺CD133⁺KDR⁺ cells. Analysis of flow cytometry files were

136 performed using FlowJo analysis software (Treestar, Inc.) and reviewed by
137 investigators blinded to the identity of the participants.

138

139 **Endothelial Cell Colony Forming Cells (ECFC)**

140

141 In 1653 participants, PBMCs were also used to assess endothelial cell colony forming
142 cells (ECFC). PBMCs were cultured on fibronectin-coated tissue culture plates (BD
143 Biosciences) and cultured for 7 days. After 7 days of culture, the number of colonies
144 in each well were counted by a single blinded individual. ECFC number was reported
145 as average number of colonies per well up to 12 wells.

146

147 **Mortality and Event Incidence**

148

149 Follow up was conducted for primary end points of all-cause and cardiovascular
150 death. Cause of death was determined through medical history, review of medical
151 records, death certificate, interview of next of kin, and review of the National Death
152 Index. Cardiovascular death was defined as death attributed to ischemic cause (fatal
153 myocardial infarction, stroke). Cardiovascular event risk was only assessed in
154 individuals with no pre-existing CVD or CV event occurring before exam 8 (n =
155 1467). CV event or incident CVD was assessed using the standard Framingham Heart
156 Study criteria and included the following: new-onset angina, fatal and non-fatal MI or
157 stroke, heart failure or intermittent claudication.

158

159 **Self-Reported Physical Activity Levels**

160

161 Self-report sleep, sitting time, slight, moderate and heavy activity were determined
162 using a physical activity questionnaire employed by the Framingham Heart Study.
163 The numbers of hours of certain activity per week were collected. A composite score
164 was calculated (physical activity index; PAI), for each participant by weighting a 24hr
165 activity recall. Participants were asked to report the number of hours in a typical day
166 spent sleeping (weighting factor [WF] = 1) and in sedentary (WF = 1.1), slight
167 (WF = 1.5), moderate (WF = 2.4), and heavy activities (WF = 5) ¹⁶. PAI was
168 subsequently calculated by adding the products of the hours spent at each activity
169 domain and their weighting factor based on the oxygen requirements for said activity
170 ¹⁷.

171

172 **Statistical Analysis**

173

174 Continuous variables were assessed for normality by assessing histograms and Q-Q
175 plots. Data for CD34⁺, CD34⁺CD133⁺KDR⁺, CD34⁺CD133⁺ and PAI were natural
176 log transformed and EFCFs square root. Appropriate data transformations were
177 applied where relevant prior to further analysis. All participants were categorized into
178 tertiles for each CPC measure for event and mortality risk analyses using Kaplan-
179 Meier curve and log-rank analyses. Subsequent Cox proportional hazards regression
180 analyses were performed, utilizing transformed continuous data for CPC's. Cox
181 proportional hazards regressions were performed unadjusted and adjusted for age,
182 sex, BMI, PAI, CVD and diabetes status, smoking status. To investigate the effects of
183 CVD status, the data set was split and analyses repeated for those free of CVD at
184 exam 8 (n = 1467) and those with a CVD diagnosis prior to exam 8 (n = 284).

185 Proportional hazards assumptions for each of the Cox models were evaluated by plots
186 of Schoenfeld residuals.

187

188 To assess the influence of physical activity on CPC counts, linear regression analyses
189 were performed to assess the relationship between CPC counts and PAI. A subset of
190 physical activity, moderate + heavy activity time, was also investigated. Unadjusted
191 and adjusted analyses are displayed. Data analyses were carried out using RStudio
192 Team (2019, RStudio: Integrated Development for R. RStudio, Inc, Boston, MA:
193 <http://www.rstudio.com/>). *P*-values of <0.05 were considered statistically significant.

194

195 **Results**

196

197 **Relationship between CPC Counts and Adverse Events**

198

199 *All-Cause Mortality*

200 Kaplan Meier curves based on tertiles of CPC counts and all-cause mortality are
201 shown in **Figure 1 A-D**. In unadjusted Cox proportional hazard models, increases in
202 CD34⁺ and CD34⁺CD133⁺ CPCs were significantly associated with a decrease risk of
203 death (*P* <0.001, *P* =0.001; **Table 2**). Following adjustment, increases in CD34⁺
204 remained significantly associated with a decrease risk of death (*P* = 0.036). Whilst
205 there was a trend for CD34⁺CD133⁺ on all-cause mortality this did not reach
206 statistical significance (*P* = 0.07). No significant associations were observed for all-
207 cause mortality for CD34⁺CD133⁺KDR⁺ EPCs or ECFC (all *P* > 0.05; **Table 2**).

208

209 *Cardiovascular Mortality*

210 Kaplan Meier curves based on tertiles of CPC counts and cardiovascular mortality are
211 shown in **Figure 1 E-H**. In unadjusted Cox proportional hazard models, increases in
212 CD34⁺ and CD34⁺CD133⁺ CPCs were significantly associated with a decrease risk of
213 cardiovascular death ($P = 0.008$, $P = 0.006$; **Table 2**). Following adjustment,
214 CD34⁺CD133⁺ CPCs were significantly associated with a decrease risk of
215 cardiovascular death ($P = 0.013$). Whilst there was a trend for CD34⁺ on CVD
216 mortality this did not reach statistical significance ($P = 0.055$). No other significant
217 associations were observed for CVD mortality (all $P > 0.05$; **Table 2**).

218

219 **Relationship between CPC Counts and Adverse Events- Influence of CVD Status**

220

221 *All-Cause Mortality*

222 Kaplan Meier curves based on tertiles of CPC counts and all-cause mortality for those
223 free of CVD and those with CVD at exam 8 are shown in **Supplementary Figure 1**.
224 Unadjusted and adjusted Cox proportional hazard models for CPC counts are
225 displayed in **Table 3**. Following adjustment, increases in CD34⁺ and CD34⁺CD133⁺
226 CPCs were significantly associated with a decrease risk of death in those with CVD at
227 exam 8 ($P = 0.032$, $P = 0.003$). No other significant associations were observed for
228 all-cause mortality (all $P > 0.05$; **Table 3**).

229

230 *Cardiovascular Mortality*

231 Kaplan Meier curves based on tertiles of CPC counts and CV mortality for those free
232 of CVD and those with CVD at exam 8 are shown in **Supplementary Figure 1**.
233 Unadjusted and adjusted Cox proportional hazard models for CPC counts and CV
234 mortality are displayed in **Table 3**. In unadjusted and adjusted Cox proportional

235 hazard models, increases in CD34⁺ and CD34⁺CD133⁺ CPCs were significantly
236 associated with a decrease risk of CV mortality in the CVD present at exam 8 group
237 (all $P < 0.05$, **Table 3**). No other significant associations were observed for CV
238 mortality in either of the sub-groups (all $P > 0.05$).

239

240 *Cardiovascular Events*

241 Cox proportional hazard analysis was performed in the population free of CVD for
242 incidence of future CV events. ECFCs were significantly associated with a decrease
243 risk of future CV events ($P = 0.046$, **Supplementary Table 1**). There was no
244 association between CPC counts and CV event risk for all other measures (all $P >$
245 0.05).

246

247 **Association of Physical Activity with CPC Counts**

248

249 To assess the association between physical activity and CPC counts, both unadjusted
250 and adjusted linear regressions were performed. In unadjusted and adjusted analyses,
251 PAI and moderate + heavy activity hours were not associated with any CPC subset or
252 with ECFC units. However, in the CVD group, after adjusting for confounders, both
253 PAI and moderate + heavy activity time were positively associated with CD34⁺ CPCs,
254 and were the only significant predictors of the number of these cells (**Table 4** and
255 **Supplementary Table 2**). Physical activity was not associated with CD34⁺CD133⁺,
256 CD34⁺CD133⁺KDR⁺ CPCs or ECFC counts, both in univariate and multivariate
257 analyses.

258

259

260 **Discussion**

261

262 Our main findings were that CD34⁺ and CD34⁺CD133⁺ CPCs were significant
263 predictors of all-cause and CV mortality in the Framingham Offspring cohort, driven
264 primarily by the strength of this association in individuals with CVD. Additionally,
265 increases in self-reported physical activity is positively associated with higher CD34⁺
266 CPCs in our CVD cohort after adjustment for confounders, a relationship not evident
267 in our CVD free cohort. Together these findings suggest that the observed protection
268 of increased CD34⁺ CPCs on mortality in a diseased population is partly driven by the
269 physical activity levels of individuals.

270

271 Several small studies have investigated the prognostic potential of CPCs for
272 predicting incident risk of all-cause and/or CV death. These studies have
273 demonstrated that these cells can predict mortality or clinical end-points in several
274 disease populations, for example patients with coronary artery disease ¹⁸, acute
275 coronary syndromes ⁹, heart failure ⁸, or type 2 diabetes ¹⁹. Our data support these
276 observations, with CD34⁺ and CD34⁺CD133⁺ CPCs predictive of all-cause and CV
277 mortality. Interestingly, this association was absent in the CVD-free population, and
278 driven mainly by a strong association with mortality in individuals with pre-diagnosed
279 CVD, suggestive that the prognostic potential of these cells is much stronger in
280 disease populations, and offers little predictive potential, if any, in apparently healthy
281 populations. Interestingly, CD34⁺CD133⁺KDR putative EPCs showed no predictive
282 ability for all-cause or CV death in our study.

283

284 In the largest study investigating the role of CPCs on incident risk prediction in a
285 CVD cohort, Patel and colleagues¹⁸ observed that, like our study, only CD34⁺ and
286 CD34⁺CD133⁺ CPCs were predictive of mortality. In 2 cohorts, each over 400
287 patients (n=905 pooled), Patel et al¹⁸ showed that increases in both these progenitor
288 subsets showed significant inverse association with all-cause and CV-mortality, and
289 that CD34⁺CD133⁺KDR⁺ cells, like our data, showed no association with mortality .
290 Our data in >1700 individuals, however, specifically shows that the associations of
291 CD34⁺ and CD34⁺CD133⁺ with all-cause and CV mortality are driven by their
292 prognostic strength in individuals with CVD, and not those who are CVD-free. It is
293 likely that these cells play a more important role in cardiovascular health when the
294 vascular system is in a state of constant damage, and that lower number of these cells
295 in these patients reflect exhaustion of the progenitor cell pool.
296
297 Both CD34⁺ and CD133⁺ progenitor cells have vascular regenerative capabilities²⁰.
298 These cells, reported initially to have pro-angiogenic capabilities due to the potential
299 to differentiate into endothelial cells¹, most probably work in a paracrine manner,
300 through secretion of vasoactive and proangiogenic factors, such as VEGF and other
301 pro-angiogenic cytokines²¹. Due to their potential vasculo-reparative capacities,
302 clinical studies have been undertaken to assess their efficacy as cellular therapies to
303 promote recovery of blood flow in myocardial infarction and stroke studies. Clinical
304 studies showing implantation or injection of these cell types show promise in repair of
305 damaged myocardium in animal models² and in some human studies^{22,23}, however
306 due to the expense and research and development required to optimize this cellular
307 therapy, other non-pharmaceutical interventions may be more effective in promoting
308 endogenous vascular repair for clinical benefit. In addition given the reduced number

309 and function of these cells in CVD⁵, and the predictive association with mortality, it
310 is pertinent to find therapies to augment production, mobilization and function of
311 these cells. Exercise and physical activity has the potential to mobilize these cells into
312 the circulation as evident from acute exercise studies showing transient increases in
313 CPCs in both healthy^{11,24} and diseased populations²⁵, although the response to acute
314 exercise is somewhat diminished in CVD patients²⁶. Long-term physical exercise and
315 physical activity shows promise in increasing number and/or function of these CPCs
316²⁷, potentially through promoting bone marrow production of progenitor cell subsets
317 (although the origin of EPCs has been a topic of debate recently²⁸) or via reducing
318 inflammatory or pro-apoptotic stimuli in the circulation²⁹, thus enhancing survival of
319 these cells in our body. Our data support the use of physical activity to promote or
320 maintain CD34⁺ CPC number in humans. High levels of self-reported physical
321 activity was associated with reduce risk of all-cause and CV mortality (data not
322 shown), and interestingly was associated with higher number of CD34⁺ and
323 CD34⁺CD133⁺ CPCs which were also associated with mortality, but only in
324 individuals with CVD, and not in our CVD-free group.

325

326 Together these findings suggest that the observed protection of increased CD34⁺
327 CPCs on mortality in a diseased population is partly driven by the physical activity
328 levels of individuals. These findings maybe clinically relevant as it is supportive of
329 exercise-based cardiac rehabilitation and suggests an area for future interventions.

330 Whilst both acute aerobic²⁴ and resistance exercise¹¹ can promote progenitor cell
331 release and improve pro-angiogenic function, long-term resistance exercise training
332 studies are lacking and thus warranted, specifically in a CVD cohort.

333

334 **Conclusion**

335 Our study demonstrated that CD34⁺ and CD34⁺CD133⁺ CPCs are predictive of
336 mortality in a large cohort, but with more prognostic potential in individuals with
337 CVD. Additionally, physical activity was associated with significantly greater CD34⁺
338 CPCs in a CVD population, with no relationship in non-CVD population. Exercise
339 and physical activity may promote vascular health and longevity in CVD patients via
340 promoting CD34⁺ CPC number.

341

342 **Acknowledgements:**

343 This manuscript was prepared manuscript was prepared using FRAMOFFSPRING
344 Research Materials obtained from the NHLBI Biologic Specimen and Data
345 Repository Information Coordinating Center and does not necessarily reflect the
346 opinions or views of the FRAMCOHORT, FRAMOFFSPRING or the NHLBI.

347

348 **Funding:**

349 the author(s) disclosed receipt of the following financial support for the research,
350 authorship, and/or publication of this article: This work was supported by Edinburgh
351 Napier University's Research Excellence Grant (M.R). D.M. is supported by the
352 European Union's INTERREG VA Programme, managed by the Special EU
353 Programmes Body (SEUPB).

354

355 **Conflict of Interest:**

356 The Author(s) declare(s) that there is no conflict of interest.

357

358 **Authors Contributions:**

359 M.R conceived and designed the research. D.M, M.R and J.D undertook statistical
360 analysis of the data. M.R and D.M interpreted results of the experiments, prepared
361 figures and drafted the manuscript; all authors edited and revised the manuscript; all
362 authors approved the final version of the manuscript.

363

364 **Data Availability Statement:**

365 The data underlying this article were provided by the National Heart, Lung and Blood
366 Institute (NHLBI) under license / by permission. Data will be shared on request to the
367 corresponding author with permission of the NHLBI.

368

369

References

370

371 1. Asahara T, Murohara T, Sullivan A, et al. Isolation of putative progenitor
372 endothelial cells for angiogenesis. *Science* 1997; 275: 964-967. DOI:
373 10.1126/science.275.5302.964.

374 2. Ananthaseshan S, Grudzinska MK, Bojakowski K, et al. Locally Transplanted
375 CD34+ Bone Marrow-Derived Cells Contribute to Vascular Healing After Vascular
376 Injury. *Transplant Proc* 2017; 49: 1467-1476. DOI:
377 10.1016/j.transproceed.2017.01.081.

378 3. Bruyndonckx L, Hoymans VY, Frederix G, et al. Endothelial progenitor cells
379 and endothelial microparticles are independent predictors of endothelial function. *J*
380 *Pediatr* 2014; 165: 300-305. DOI: 10.1016/j.jpeds.2014.04.015.

381 4. Van Craenenbroeck EM, Frederix G, Pattyn N, et al. Effects of aerobic interval
382 training and continuous training on cellular markers of endothelial integrity in coronary

383 artery disease: a SAINTEX-CAD substudy. *Am J Physiol Heart Circ Physiol* 2015;
384 309: H1876-1882. DOI: 10.1152/ajpheart.00341.2015.

385 5. Hill JM, Zalos G, Halcox JPJ, et al. Circulating endothelial progenitor cells,
386 vascular function, and cardiovascular risk. *New England Journal of Medicine* 2003;
387 348: 593-600. DOI: 10.1056/NEJMoa022287.

388 6. Schmidt-Lucke C, Rossig L, Fichtlscherer S, et al. Reduced number of
389 circulating endothelial progenitor cells predicts future cardiovascular events: proof of
390 concept for the clinical importance of endogenous vascular repair. *Circulation* 2005;
391 111: 2981-2987. DOI: 10.1161/circulationaha.104.504340.

392 7. Fadini GP, Coracina A, Baesso I, et al. Peripheral blood CD34+KDR+
393 endothelial progenitor cells are determinants of subclinical atherosclerosis in a middle-
394 aged general population. *Stroke* 2006; 37: 2277-2282. DOI:
395 10.1161/01.str.0000236064.19293.79.

396 8. Samman Tahhan A, Hammadah M, Sandesara PB, et al. Progenitor Cells and
397 Clinical Outcomes in Patients With Heart Failure. *Circ Heart Fail* 2017; 10. DOI:
398 10.1161/CIRCHEARTFAILURE.117.004106.

399 9. Samman Tahhan AS, Hammadah M, Raad M, et al. Progenitor Cells and
400 Clinical Outcomes in Patients with Acute Coronary Syndromes. *Circulation Research*
401 2018. DOI: 10.1161/circresaha.118.312821.

402 10. Seals DR, Nagy EE and Moreau KL. Aerobic exercise training and vascular
403 function with ageing in healthy men and women. *The Journal of Physiology* 2019; 597:
404 4901-4914. DOI: 10.1113/jp277764.

405 11. Ross MD, Wekesa AL, Phelan JP, et al. Resistance exercise increases
406 endothelial progenitor cells and angiogenic factors. *Med Sci Sports Exerc* 2014; 46: 16-
407 23. DOI: 10.1249/MSS.0b013e3182a142da.

408 12. Steiner S, Niessner A, Ziegler S, et al. Endurance training increases the number
409 of endothelial progenitor cells in patients with cardiovascular risk and coronary artery
410 disease. *Atherosclerosis* 2005; 181: 305-310. DOI:
411 10.1016/j.atherosclerosis.2005.01.006.

412 13. Kannel WB and Gordan T. Evaluation of cardiovascular risk in the elderly: the
413 Framingham study. *Bulletin of the New York Academy of Medicine* 1978; 54: 573-591.

414 14. Kannel WB, Feinleib M, McNamara P, et al. An investigation of coronary heart
415 disease in families: The Framingham Offspring Study. *American Journal of*
416 *Epidemiology* 1979; 110: 281-290. DOI: 10.1093/oxfordjournals.aje.a112813.

417 15. Cheng S, Wang N, Larson MG, et al. Circulating angiogenic cell populations,
418 vascular function, and arterial stiffness. *Atherosclerosis* 2012; 220: 145-150. DOI:
419 10.1016/j.atherosclerosis.2011.10.015.

- 420 16. Kannel WB and Sorlie P. Some Health Benefits of Physical Activity: The
421 Framingham Study. *Archives of Internal Medicine* 1979; 139: 857-861. DOI:
422 10.1001/archinte.1979.03630450011006.
- 423 17. Wilson PWF, Paffenbarger RS, Morris JN, et al. Assessment methods for
424 physical activity and physical fitness in population studies: Report of a NHLBI
425 workshop. *American Heart Journal* 1986; 111: 1177-1192. DOI:
426 [https://doi.org/10.1016/0002-8703\(86\)90022-0](https://doi.org/10.1016/0002-8703(86)90022-0).
- 427 18. Patel RS, Li Q, Ghasemzadeh N, et al. Circulating CD34+ progenitor cells and
428 risk of mortality in a population with coronary artery disease. *Circ Res* 2015; 116: 289-
429 297. DOI: 10.1161/CIRCRESAHA.116.304187.
- 430 19. Egan CG, Fondelli C, Pierantozzi E, et al. Putative endothelial progenitor cells
431 predict long-term mortality in type-2 diabetes. *Endocrine* 2018. DOI: 10.1007/s12020-
432 018-1695-0.
- 433 20. Peichev M, Naiyer AJ, Pereira D, et al. Expression of VEGFR-2 and AC133 by
434 circulating human CD34+ cells identifies a population of functional endothelial
435 precursors. *Blood* 2000; 95: 952-958.
- 436 21. Hur J, Yoon C-H, Kim H-S, et al. Characterization of two types of endothelial
437 progenitor cells and their different contributions to neovasculogenesis. *Arterioscler*
438 *Thromb Vasc Biol* 2004; 24: 288-293. DOI: 10.1161/01.atv.0000114236.77009.06.

- 439 22. Nasser BA, Ebell W, Dandel M, et al. Autologous CD133+ bone marrow cells
440 and bypass grafting for regeneration of ischaemic myocardium: the Cardio133 trial.
441 *European Heart Journal* 2014. DOI: 10.1093/eurheartj/ehu007.
- 442 23. Quyyumi AA, Vasquez A, Kereiakes DJ, et al. PreSERVE-AMI: A
443 Randomized, Double-Blind, Placebo-Controlled Clinical Trial of Intracoronary
444 Administration of Autologous CD34+ Cells in Patients With Left Ventricular
445 Dysfunction Post STEMI *Circulation Research* 2017; 120: 324-331. DOI:
446 doi:10.1161/CIRCRESAHA.115.308165.
- 447 24. Nederveen JP, Baker J, Ibrahim G, et al. Hematopoietic Stem and Progenitor
448 Cell (HSPC) Mobilization Responses to Different Exercise Intensities in Young and
449 Older Adults. *Journal of Science in Sport and Exercise* 2020. DOI: 10.1007/s42978-
450 019-00050-4.
- 451 25. Adams V, Lenk K, Linke A, et al. Increase of circulating endothelial progenitor
452 cells in patients with coronary artery disease after exercise-induced ischemia.
453 *Arterioscler Thromb Vasc Biol* 2004; 24: 684-690. DOI:
454 10.1161/01.ATV.0000124104.23702.a0.
- 455 26. Moazzami K, Lima BB, Hammad M, et al. Association Between Change in
456 Circulating Progenitor Cells During Exercise Stress and Risk of Adverse
457 Cardiovascular Events in Patients With Coronary Artery Disease. *JAMA Cardiology*
458 2020; 5: 147-155. DOI: 10.1001/jamacardio.2019.4528.

- 459 27. Cavalcante SL, Lopes S, Bohn L, et al. Effects of exercise on endothelial
460 progenitor cells in patients with cardiovascular disease: A systematic review and meta-
461 analysis of randomized controlled trials. *Revista Portuguesa de Cardiologia* 2020.
462 DOI: <https://doi.org/10.1016/j.repc.2019.02.016>.
- 463 28. Fujisawa T, Tura-Ceide O, Hunter A, et al. Endothelial Progenitor Cells Do Not
464 Originate From the Bone Marrow. *Circulation* 2019; 140: 1524-1526. DOI:
465 doi:10.1161/CIRCULATIONAHA.119.042351.
- 466 29. Cesari F, Marcucci R, Gori AM, et al. Impact of a cardiac rehabilitation program
467 and inflammatory state on endothelial progenitor cells in acute coronary syndrome
468 patients. *Int J Cardiol* 2013; 167: 1854-1859. DOI: 10.1016/j.ijcard.2012.04.157.
469

470 **Figure legends**

471

472 **Figure 1.** Kaplan Meier Survival Curve's for the relationship between CPC tertile
473 group and all-cause mortality (A, B, C, D) and cardiovascular mortality (E, F, G, H)
474 (Tertile 1 = Low count, Tertile 2 = Moderate count, Tertile 3 = High count). Statistical
475 significance was set at $p < 0.05$.

476

477

478

479

480

481

482

483

484

485

486

487

488

489

490

491

492

493

494

495

496

497

498

499

500

501

502

503

504 **Tables**

505 **Table 1. Participant Characteristics**

	All (n=1751)	CVD-free (n=1467, 84%)	CVD (n=284, 16%)	p-value
Age (years)	66 ± 9 [40-92]	65 ± 9 [40-90]	72 ± 9 [51-92]	<0.001
Female (n, %)	940, 53.7%	822, 56%	118, 41.5%	-
BMI (kg·m ²)	28.4 ± 5.3 [13.8-54.2]	28.2 ± 5.3 [13.8-54.2]	29.2 ± 5.2 [18.4-45.1]	0.007
Systolic Blood Pressure (mmHg)	129 ± 18 [76-204]	129 ± 18 [76-204]	131 ± 19 [90-198]	0.070
Diastolic Blood Pressure (mmHg)	74 ± 11 [34-122]	75 ± 10 [34-122]	70 ± 11 [40-108]	<0.001***
Fasting Glucose (mg/dL)	107.0 ± 24.1 [36-327]	106 ± 23 [58-327]	113 ± 28 [36-292]	<0.001***
Total Cholesterol (mg/dL)	186.0 ± 37.5 [71-322]	190 ± 35.6 [96-322]	164 ± 39.4 [71-289]	<0.001***
HDL-Cholesterol (mg/dL)	57.4 ± 18.2 [21-147]	58.8 ± 18.3 [21-152]	50.3 ± 15.8 [23-130]	<0.001***
Triglycerides (mg/dL)	118.0 ± 70.6 [30-976]	115 ± 67.2 [30-976]	133 ± 84.4 [40-583]	<0.001
Smokers (n,%)	206, 11.8%	170, 12%	36, 13%	
Hypertensive (n, %)	989, 56.5%	831, 57%	158, 56%	-
CD34+ CPCs (% MNCs)	0.0873 ± 0.0492 [0.011-0.490]	0.0875 ± 0.0483 [0.0110-0.490]	0.0860 ± 0.0538 [0.0160-0.370]	0.201
CD34+CD133+ CPCs (% MNCs)	0.0402 ± 0.0366 [0.0020-0.6090]	0.0407 ± 0.0380 [0.0020-0.6090]	0.0375 ± 0.0286 [0.0040-0.2420]	0.290
CD34+CD133+KDR+ (% MNCs)	0.0040 ± 0.0037 [0.0001-0.0470]	0.0040 ± 0.0037 [0.0001-0.0470]	0.0041 ± 0.0039 [0.0002-0.0261]	0.648
ECFC (number of colonies)	43 ± 31 [0-196]	43 ± 31 [0-196]	42 ± 32 [0-178]	0.470

506 *Data are mean ± SD [range]. ECFC- Endothelial Colony Forming Cells (in 1631*

507 *participants). * p <0.05, *** p <0.001.*

508

509 **Table 2. CPC Counts and risk of death for all participants**

CPC Subset	Outcome	Model	No. of events/ No. at risk	HR	HR 95% CI	P value
CD34⁺ CPCs	All-Cause Mortality	Unadjusted	326/1751	0.64	0.52 - 0.79	<0.001***
		Adjusted ^a	326/1751	0.79	0.64 - 0.98	0.036*
	CVD Mortality	Unadjusted	71/1751	0.54	0.35 - 0.85	0.008**
		Adjusted ^a	71/1751	0.64	0.41 - 1.01	0.055
CD34⁺CD133⁺KDR⁺ EPCs	All-Cause Mortality	Unadjusted	326/1751	0.88	0.76 - 1.01	0.066
		Adjusted ^a	326/1751	0.93	0.80 - 1.07	0.300
	CVD Mortality	Unadjusted	71/1751	1.02	0.76 - 1.38	0.888
		Adjusted ^a	71/1751	1.09	0.81 - 1.47	0.579
CD34⁺CD133⁺ CPCs	All-Cause Mortality	Unadjusted	303/1630	0.76	0.65 - 0.90	0.001**
		Adjusted ^a	303/1630	0.86	0.72 - 1.01	0.07
	CVD Mortality	Unadjusted	65/1630	0.61	0.43 - 0.87	0.006**
		Adjusted ^a	65/1630	0.63	0.44 - 0.91	0.013*
ECFC	All-Cause Mortality	Unadjusted	321/1653	0.97	0.92 - 1.01	0.145
		Adjusted ^a	321/1653	0.98	0.94 - 1.03	0.478
	CVD Mortality	Unadjusted	71/1653	0.97	0.88 - 1.07	0.547
		Adjusted ^a	71/1653	1.00	0.90 - 1.10	0.932

510 *HR – Hazard Ratio, CI – Confidence Intervals*

511 *^aModel adjusted for age, sex, BMI, PAI, Smoking Status, Diabetes Status, Hypertension*

512 *and previous CVD diagnosis*

513 **** P < 0.001, ** P < 0.01, * P < 0.05*

514 **Table 3. CPC Counts and risk of death for all participants split by CVD diagnosis at exam 8**

CPC Subset	Outcome	Model	CVD Free at Exam 8				CVD Diagnosis by Exam 8			
			No. of events/ No.	HR	HR 95% CI	P value	No. of events/	HR	HR 95% CI	P value
			at risk				No. at risk			
CD34⁺ CPCs	All-Cause Mortality	Unadjusted	211/1467	0.70	0.54 - 0.91	0.008**	115/284	0.57	0.41 - 0.81	0.002**
		Adjusted ^a	211/1467	0.89	0.67 - 1.18	0.424	115/284	0.68	0.48 - 0.97	0.032*
	CVD Mortality	Unadjusted	34/1467	0.65	0.34 - 1.26	0.203	37/284	0.49	0.26 - 0.91	0.023*
		Adjusted ^a	34/1467	0.84	0.41 - 1.70	0.619	37/284	0.53	0.28 - 0.99	0.048*
CD34⁺CD133⁺KDR⁺ EPCs	All-Cause Mortality	Unadjusted	211/1467	0.90	0.76 - 1.08	0.258	115/284	0.85	0.68 - 1.06	0.149
		Adjusted ^a	211/1467	0.92	0.76 - 1.11	0.385	115/284	0.94	0.75 - 1.18	0.586
	CVD Mortality	Unadjusted	34/1467	0.86	0.56 - 1.33	0.492	37/284	1.17	0.79 - 1.72	0.442
		Adjusted ^a	34/1467	0.80	0.49 - 1.28	0.350	37/284	1.28	0.86 - 1.90	0.229
CD34⁺CD133⁺ CPCs	All-Cause Mortality	Unadjusted	196/1364	0.85	0.69 - 1.04	0.11	107/266	0.61	0.46 - 0.82	0.001**
		Adjusted ^a	196/1364	0.99	0.80 - 1.23	0.943	107/266	0.64	0.48 - 0.86	0.003**
	CVD Mortality	Unadjusted	31/1364	0.78	0.47 - 1.30	0.344	34/266	0.45	0.27 - 0.76	0.003**
		Adjusted ^a	31/1364	0.86	0.50 - 1.49	0.588	34/266	0.42	0.24 - 0.72	0.002**
ECFC	All-Cause Mortality	Unadjusted	205/1391	0.96	0.91 - 1.02	0.179	116/262	0.99	0.92 - 1.07	0.782
		Adjusted ^a	205/1391	0.97	0.92 - 1.02	0.261	116/262	1.01	0.93 - 1.09	0.828
	CVD Mortality	Unadjusted	34/1391	1.03	0.90 - 1.19	0.655	37/262	0.93	0.82 - 1.07	0.317
		Adjusted ^a	34/1391	1.03	0.90 - 1.19	0.633	37/262	0.95	0.82 - 1.09	0.437

515 *HR- Hazard Ratio, CI- Confidence Intervals*

516 *^aModel adjusted for age, sex, BMI, PAI, Smoking Status, Diabetes Status, Hypertension. *** P < 0.001, ** P < 0.01, * P < 0.05*

517 **Table 4. Association Between Physical Activity Index and CPC Counts**

CPC Subset	Outcome	All	CVD-Free	CVD
		β , T-value, P-Value	β , T-value, P-Value	β , T-value, P-Value
CD34⁺	Unadjusted	0.023, 0.967, 0.334	-0.013, -0.486, 0.627	0.176, 3.009, 0.003**
	Adjusted ^a	0.008, 0.322, 0.748	-0.021, -0.813, 0.416	0.153, 2.461, 0.014*
CD34⁺CD133⁺	Unadjusted	-0.014, -0.567, 0.571	-0.04, -1.495, 0.135	0.115, 1.893, 0.059
	Adjusted ^a	-0.022, -0.872, 0.383	-0.042, -1.574, 0.116	0.107, 1.616, 0.107
CD34⁺CD133⁺KDR⁺	Unadjusted	0.022, 0.901, 0.368	0.002, 0.086, 0.932	0.108, 1.817, 0.07
	Adjusted ^a	0.019, 0.775, 0.439	0.005, 0.194, 0.846	0.080, 1.269, 0.205
ECFC	Unadjusted	0.005, 0.197, 0.844	-0.005, -0.201, 0.841	0.049, 0.785, 0.433
	Adjusted ^a	-0.006, -0.241, 0.809	-0.015, -0.535, 0.592	0.036, 0.537, 0.592

518 ^aModel adjusted for age, sex, BMI, Smoking Status, Diabetes Status and Hypertension.

519 For “All” adjustment also includes previous CVD diagnosis

520 ECFC- Endothelial colony forming cells.

521 *** $P < 0.001$, ** $P < 0.01$, * $P < 0.05$

522

523

524

525

526

527

528

529

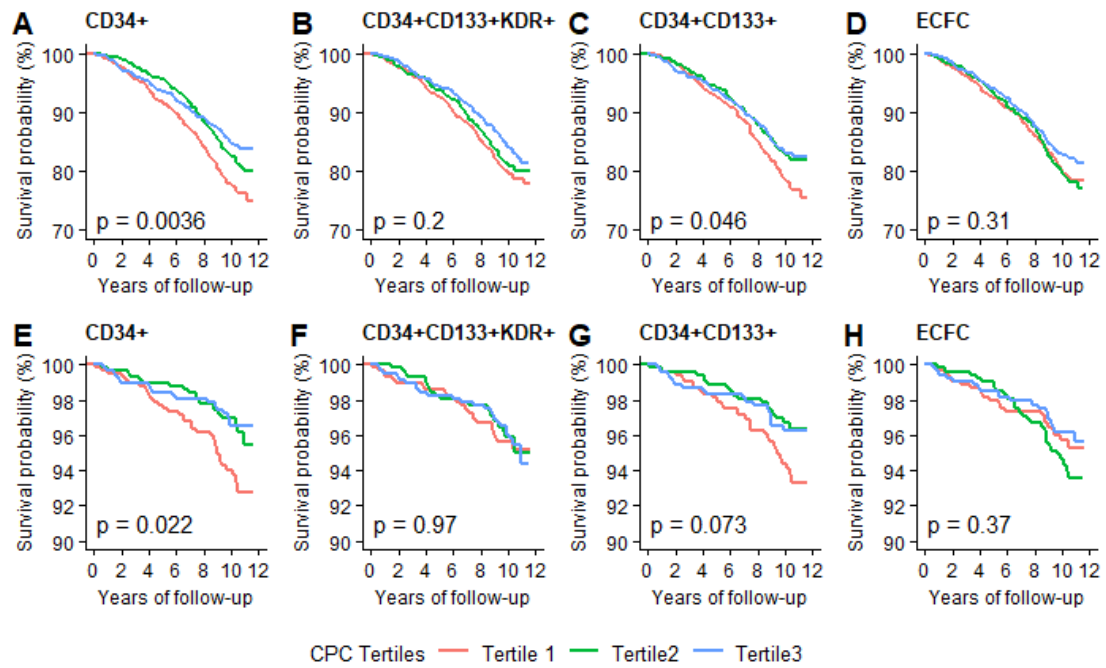
530

531

532

533 **Figures**

534



535

536

537 **Figure 1**

538 **Supplementary information**

539

540 **Data analysis**

541

542 Data analyses were carried out using RStudio Team (2019, RStudio Team (2019). RSt
543 udio: Integrated Development for R. RStudio, Inc., Boston, MA: [http://www.rstudio.c](http://www.rstudio.com/)
544 om/) utilising the R core package [1] and the extension packages “dplyr” for data clean
545 ing and transformation [2], “survival” for survival analyses [3] and “ggplot2” [4].and
546 “survminer” [5] for figure generation.

547

548 [1] R Core Team (2020). R: A language and environment for statistical computing. R
549 Foundation for Statistical Computing, Vienna, Austria. URL [https://www.R-project.or](https://www.R-project.org/)
550 [g/](https://www.R-project.org/).

551 [2] Hadley Wickham, Romain François, Lionel Henry and Kirill Müller (2020). dplyr: A Grammar of
552 Data Manipulation. R package version 0.8.5. [https://CRAN.R-project.org/package=dpl](https://CRAN.R-project.org/package=dplyr)
553 [yr](https://CRAN.R-project.org/package=dplyr)

554 [3] Therneau T (2020). *_A Package for Survival Analysis in R_*. R package version 3
555 .1-12, <URL:<https://CRAN.R-project.org/package=survival>>.

556

557 [4] H. Wickham. *ggplot2: Elegant Graphics for Data Analysis*. Springer-Verlag New
558 York, 2016. <URL: <https://ggplot2.tidyverse.org>>.

559

560 [5] Alboukadel Kassambara, Marcin Kosinski and Przemyslaw Biecek (2019). *surv*
561 *miner: Drawing Survival Curves using 'ggplot2'*. R package version 0.4.6. [https://CRA](https://CRAN.R-project.org/package=survminer)
562 [N.R-project.org/package=survminer](https://CRAN.R-project.org/package=survminer)

563

564

565

566

567

568

569

570

571

572 **Supplementary Tables and Figures**

573

574 **Supplementary Table 1. CPC Counts and risk of future CV events in participants**

575 **free of CVD diagnosis at exam 8**

CPC Subset	Outcome	Model	No. of events/ No. at risk	HR	HR 95% CI	P value
CD34⁺ CPCs	CVD Event	Unadjusted	191/1467	0.99	0.75 - 1.30	0.925
		Adjusted ^b	191/1467	1.18	0.88 - 1.59	0.279
CD34⁺CD133⁺KDR⁺ EPCs	CVD Event	Unadjusted	191/1467	1.09	0.91 - 1.31	0.372
		Adjusted ^b	191/1467	1.06	0.87 - 1.28	0.588
CD34⁺CD133⁺ CPCs	CVD Event	Unadjusted	177/1364	0.97	0.77 - 1.21	0.783
		Adjusted ^b	177/1364	1.05	0.83 - 1.33	0.688
ECFC	CVD Event	Unadjusted	187/1391	0.94	0.89 - 1.00	0.052
		Adjusted ^a	187/1391	0.94	0.88 - 1.00	0.046*

HR- Hazard Ratio, CI- Confidence Intervals.

^aModel adjusted for age, sex, BMI, PAI, Smoking Status, Diabetes Status,

Hypertension

*** $P < 0.001$, ** $P < 0.01$, * $P < 0.05$

576

577

578

579

580

581

582

583

584

585

586

587

588 **Supplementary Table 2. Association Between Time Spent at Moderate+Heavy**
589 **Physical Activity and CPC Counts.**

CPC Subset	Outcome	All	CVD-Free	CVD
		β , T-value, P-Value	β , T-value, P-Value	β , T-value, P-Value
CD34⁺	Unadjusted	0.007, 0.277, 0.782	-0.027, -1.033, 0.302	0.159, 2.706, 0.007**
	Adjusted ^a	0.013, 0.538, 0.591	-0.014, -0.542, 0.588	0.149, 2.449, 0.015*
CD34⁺CD133⁺	Unadjusted	-0.026, -1.053, 0.292	-0.046, -1.723, 0.085	0.078, 1.273, 0.204
	Adjusted ^a	-0.020, -0.819, 0.413	-0.036, -1.362, 0.173	0.069, 1.086, 0.278
CD34⁺CD133⁺KDR⁺	Unadjusted	0.029, 1.207, 0.228	0.010, 0.365, 0.715	0.119, 2.016, 0.045*
	Adjusted ^a	0.035, 1.449, 0.148	0.019, 0.712, 0.477	0.112, 1.827, 0.069
ECFC	Unadjusted	-0.009, -0.349, 0.727	-0.014, -0.541, 0.589	0.015, 0.243, 0.809
	Adjusted ^a	-0.009, -0.357, 0.721	-0.013, -0.479, 0.632	0.006, 0.096, 0.924

590 ^aModel adjusted for age, sex, BMI, Smoking Status, Diabetes Status and Hypertension.

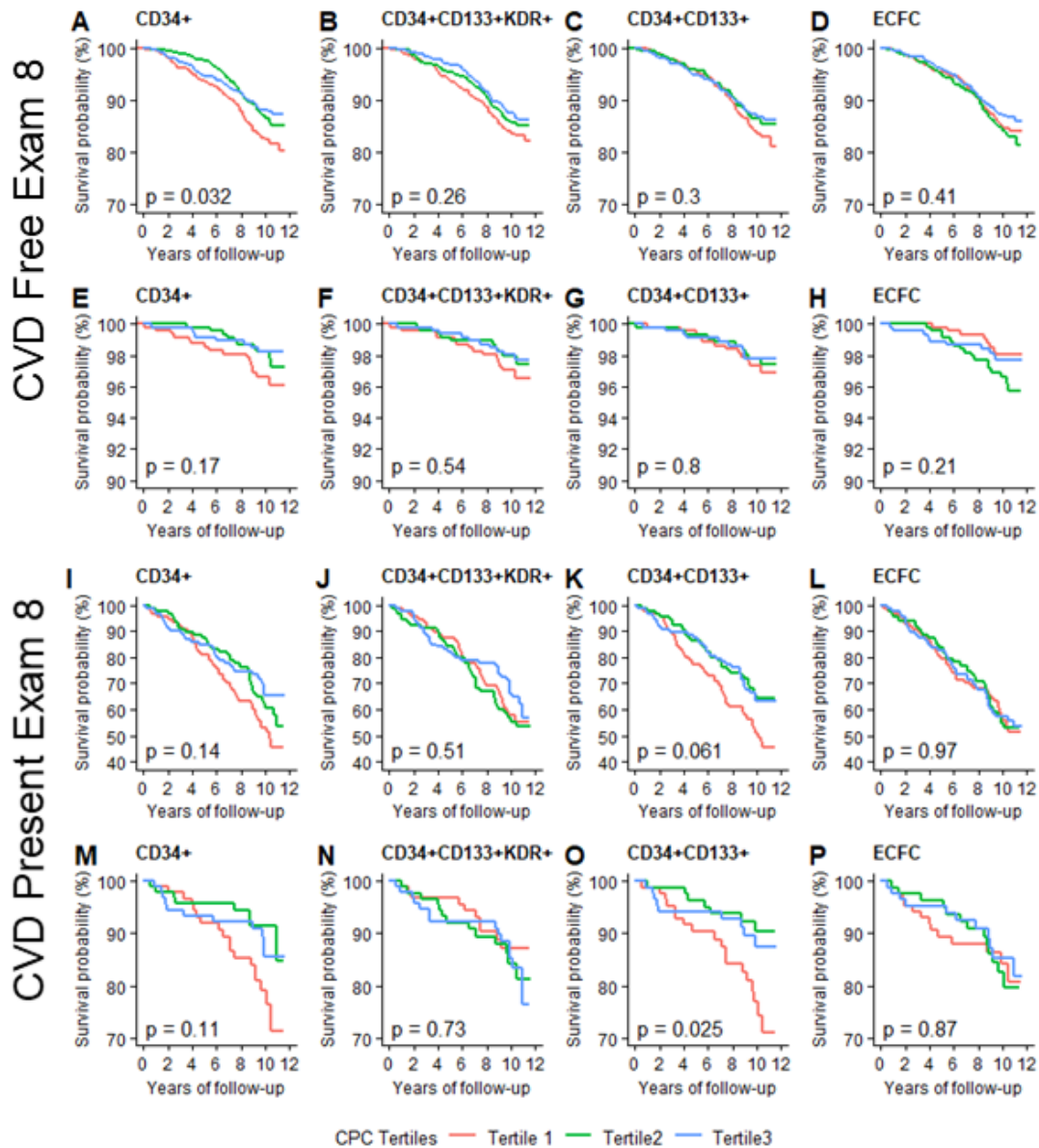
591 For “All” adjustment also includes previous CVD diagnosis

592 ECFC- Endothelial colony forming cells.

593 *** $P < 0.001$, ** $P < 0.01$, * $P < 0.05$

594

595



596

597 **Supplementary Figure 1.** Kaplan Meier Survival Curve's for the relationship between
 598 mortality and CPC tertile split by participants free of CVD at exam 8 (A – H) and those
 599 diagnosed with CVD at exam 8 (I – P). Curves A- D and I– L are for all-cause mortality
 600 and curves E – H and M - P are for CV mortality. (Tertile 1 = Low count, Tertile 2 =
 601 Moderate count, Tertile 3 = High count). Statistical significance was set at $p < 0.05$.

602

603