

1 **Quality of life in cancer patients treated with mistletoe: a**
2 **systematic review and meta-analysis**

3
4

5 Martin Loef³, Harald Walach^{1,2,3*}

6
7
8

9 1) Poznan Medical University, Dept. Pediatric Gastroenterology, Poznan, Poland

10 2) Universität Witten-Herdecke, Dept. Psychologie, Witten, Germany

11 3) CHS-Institut, Berlin

12 *Address for Correspondence:

13 Harald Walach

14 Schönwalder Str. 17

15 D – 13347 Berlin

16 hwalac@gmail.com

17
18

19 Abstract

20 Background: Mistletoe extracts are used as an adjunct therapy for cancer patients, but there is dissent
21 as to whether this therapy has a positive impact on quality of life (QoL).

22 Methods: We conducted a systematic review searching in several databases (Medline, Embase,
23 CENTRAL, CINAHL, PsycInfo, Science Citation Index, clinicaltrials.gov, opengrey.org) by combining
24 terms that cover the fields of “neoplasm”, “quality of life” and “mistletoe”. We included prospective
25 controlled trials that compared mistletoe extracts with a control in cancer patients and reported QoL
26 or related dimensions. The quality of the studies was assessed with the Cochrane Risk of Bias tool
27 version 2. We conducted a quantitative meta-analysis.

28 Results: We included 26 publications with 30 data sets. The studies were heterogeneous. The pooled
29 standardized mean difference (random effects model) for global QoL after treatment with mistletoe
30 extracts vs. control was $d = 0.61$ (95% CI 0.41-0.81; $p < 0,00001$). The effect was stronger for younger
31 patients, with longer treatment, in studies with lower risk of bias, in randomized and blinded studies.
32 Sensitivity analyses support the validity of the finding. 50% of the QoL subdomains (e.g. pain, nausea)
33 show a significant improvement after mistletoe treatment. Most studies have a high risk of bias or at
34 least raise some concern.

35 Conclusion: Mistletoe extracts produce a significant, medium-sized effect on QoL in cancer. Risk of bias
36 in the analyzed studies is likely due to the specific type of treatment, which is difficult to blind; yet this
37 risk is unlikely to affect the outcome.

38 Keywords

39 Meta-analysis, quality of life, mistletoe, cancer, systematic review

40

41 PROSPERO registration number: CRD42019137704

42

43

44 Background

45 Mistletoe has been used for centuries as a folk remedy, dating back to ancient Greek and Celtic
46 medicine [1, 2]. Today's use of preparations of the European mistletoe (*Viscum album L.*) in
47 anthroposophic medicine and particularly the treatment of cancer patients has been introduced by
48 Rudolf Steiner (1861-1925) in the 1920s [3] and developed further by Ita Wegmann and various
49 clinicians and pharmacists in this tradition. The basis for this development were, apart from the
50 traditional pharmacopeias, specific anthroposophic investigations involving the phenomenology of
51 mistletoe that grows as a semi-parasite on trees. These and other considerations led Steiner and
52 associates to try mistletoe treatment for cancer. Out of this suggestion a long tradition of empirical
53 knowledge has developed, especially in Germany and Europe. *Viscum album* extract (VAE) is applied
54 subcutaneously, normally two to three times per week whereas the complete treatment duration
55 varies from some weeks up to five years and more. Different products are available such as
56 ABNOBAViscum, Helixor, Iscador, or Lektinol.

57 Mistletoe contains biologically active molecules including lectins, flavonoides, viscotoxins, oligo- and
58 polysaccharides, alkaloids, membrane lipids and other substances [4]. Although the exact
59 pharmacological mode of action of mistletoe is not completely elucidated, there is a growing number
60 of biological studies with a clear focus on lectins. Lectins (from the Latin *legere*, "to select") are
61 carbohydrate-binding proteins displayed on cell-surfaces to convey the interaction of cells with their
62 environment [5]. Lectins mediate many immunological activities: For example, lectins show an
63 immunomodulatory effect on neutrophils and macrophages by increasing the natural killer cytotoxicity
64 and the number of activated lymphocytes [6-8]. They induce apoptosis in human lymphocytes [9] and
65 boost the antioxidant system in mice [10]. In healthy subjects, the subcutaneous application of
66 mistletoe has stimulated the production of granulocyte-macrophage colony-stimulating factor (GM-
67 CSF), Interleukin 5 and Interferon gamma [11], indicating the immunopotentiating properties of
68 mistletoe. The multiple ways how mistletoe affects the immune system have been recently reviewed
69 elsewhere [12]. In consequence, the immunological pathways of conventional oncological treatments

70 may be influenced by VAE, affecting cancer cells and decreasing adverse effects. This may result in a
71 better quality of life (QoL).

72 A number of reviews has been published over the last two decades that address the effects of VAE on
73 QoL in cancer patients [13-19]. However, these studies are either out of date, don't make use of all
74 published evidence, and/or don't combine the data quantitatively into a pooled effect size.

75 The aim of this study is therefore to review and analyze the current evidence regarding QoL of cancer
76 patients which were treated with VAE and to calculate a meta-analysis.

77

78

79 **Methods**

80 The study has been reported in accordance to PRISMA. The protocol was submitted to PROSPERO
81 (registration number: CRD42019137704).

82 **Sources of evidence**

83 We searched the databases Medline, Embase, PsychInfo, CENTRAL, CINAHL, Web of Science, and
84 clinicaltrials.gov, we used google scholar, hand-searched the reference lists of reviews and identified
85 studies and screened for grey literature via Google and opengrey.org. In case of missing data we
86 contacted the authors.

87

88 **Search strategy**

89 We developed a search strategy by iteratively combining synonyms and/or subterms of "quality of life"
90 (e.g. well-being, QoL), "cancer" (e.g. neoplasm, sarcom, lymphom) and "mistletoe" (e.g. Helixor,
91 Eurixor) to identify an adequate set of terms. We applied the following search strategy for Medline
92 (Pubmed) and adopted it to the other databases accordingly:

- 93 1. quality of life OR HRQoL OR HRQL OR QOL OR patient satisfaction OR well-being OR wellbeing
- 94 2. mistel OR mistletoe OR Iscador OR Iscar OR Helixor OR Iscucin OR Abnobaviscum OR Eurixor
- 95 OR Plenosol OR Lektinol OR Vysorel OR Isorel OR Cefalektin OR Viscum

- 96 3. Krebs OR cancer OR neoplasm/ OR tumor OR oncolog* OR onkologie OR carcin* OR malignant
97 OR metastasis
98 4. Humans[MESH]
99 5. 1 AND 2 AND 3 AND 4

100 With the exception of #4 the general search fields were applied.

101

102 **Selection criteria**

103 We included studies that measured QoL or self-regulation of cancer patients treated with mistletoe
104 extracts assessed by performance status scales or patient-reported instruments. Studies were chosen
105 if they were

- 106 • prospective controlled studies with
- 107 • two or more arms,
- 108 • both interventional and non-interventional.

109 The search was not limited to languages.

110 Studies were excluded if

- 111 • they did not meet the aforementioned inclusion criteria,
- 112 • if they tested multi-component complementary medicine interventions,
- 113 • if they failed to report sufficient information to be included into the meta-analysis or
- 114 • where this information cannot be gleaned from authors or extracted from graphs.

115 **Data management**

116 The data was extracted from each study and entered into a spreadsheet by two authors independently.

117 Then the extracted spreadsheets were compared and discrepancies were resolved by discussion until
118 consensus was reached. We coded the following characteristics:

- 119 • number of participants in each treatment arm
- 120 • year, when study was conducted; in case this was not given, we estimated a 3 year lag from
121 publication date for the meta-regression

- 122 • duration of study
- 123 • country where the study was conducted
- 124 • cancer type
- 125 • age
- 126 • gender of patients
- 127 • diagnosis according to ICD 10
- 128 • duration of study
- 129 • type of study (interventional vs. non-interventional, randomized vs. non-randomized, blinded
- 130 vs. not blinded, single vs. multi-center)
- 131 • additional therapy (e.g. chemotherapy)
- 132 • number of drop-outs in each study arm
- 133 • active mistletoe extract preparation (e.g. Eurixor, Iscador, etc.)
- 134 • control treatment (e.g. placebo)
- 135 • effect size of primary outcomes plus standard deviation, or confidence intervals for effect
- 136 measure provided using the reported global measure of QoL
- 137 • instrument used to measure primary outcomes
- 138 • statistics according to intent-to-treat analysis (yes/no)
- 139 • sponsoring of study (corporate, public, no-sponsoring).

140

141 If numerical data provided by the study publication was insufficient to calculate effect sizes, we
142 contacted the authors. In cases where additional data were provided by the authors, these were then
143 used instead of the published data. In older studies this was impossible. In those cases we used the
144 given information (for instance means and confidence intervals, or means and p-values, or statistical
145 information to generate the necessary data). In some cases we had to use medians as means and
146 recover standard errors of the means from the given confidence intervals which also necessitated an
147 adaptation of the confidence intervals into symmetrical ones. In each case we used the more

148 conservative option which yielded larger standard errors and hence larger standard deviations. Thus,
149 we generally opted for an error on the conservative side. When no quantitative information was given,
150 but only graphs were presented, we printed high resolution graphs and derived the mean values and
151 standard errors applying a ruler and used the given statistical information to arrive at the necessary
152 quantitative scores. All these procedures were conducted independently and in duplicate [20].

153

154 **Risk of bias (quality) assessment**

155 The Cochrane Risk of Bias tool 2 (Rob 2) was used to assess the risk of bias in randomized controlled
156 trials [21]. All studies were assigned to the intention-to-treat-effect-analysis. Non-randomized or non-
157 interventional studies were additionally analyzed with the Newcastle Ottawa Scale [22]. Two reviewers
158 (HW, ML) independently assessed the risk of bias. In case of discrepancies they decided by consensus.

159

160 **Statistical analysis**

161 The data were analyzed using Comprehensive Meta-Analysis V. 2 and Revman 5.3.5, the summary
162 measure was the standardized mean difference. The meta-analysis was calculated independently by
163 both authors using the two software tools Comprehensive Meta-Analysis and RevMan. The results
164 were compared and underlying discrepancies resolved by discussion until both analyses yielded the
165 same numerical results up to the second decimal. We report the overall analysis according to the
166 results yielded by the RevMan analysis and conducted sensitivity analyses with Comprehensive Meta-
167 Analysis.

168

169 The heterogeneity between studies was assessed by the Cochrane Q test and quantified by the index
170 of heterogeneity (I^2) [23]. A value of I^2 of 25%, 50% and 75% indicates low, medium and high
171 heterogeneity, respectively. If heterogeneity was higher than 25% we applied a random effects model
172 for pooling the data, else a fixed effects model was used. As heterogeneity was high for the overall

173 data-set, a random effects model was indicated. Fixed effect models were only used sparingly in
174 exploratory subgroup analyses or sensitivity analyses, when heterogeneity was low.

175
176 We conducted subgroup analysis in order to identify possible sources of the heterogeneity. Stratified
177 analyses were performed by: study types (e.g. blinded vs. not blinded, randomized versus non-
178 randomized, types of control), additional treatments, country, risk-of-bias status, type of sponsoring,
179 QoL instruments and related dimensions (in particular self-regulation), and mistletoe compound. Type
180 of cancer was not included, as there were too many different cancer types. We conducted meta-
181 regressions and regressed the three continuous predictors year of study, age of patients and length of
182 treatment on effect size. We checked for publication bias using Egger's regression intercept method
183 and Duval and Tweedie's trim and fill method [24].

184

185 Results

186 598 studies were identified by electronic and hand searches, after removing duplicates. 67 full texts
187 were retrieved of which 26 publications with 30 separate data sets met the inclusion criteria (see figure
188 1) [25-50]. We contacted 14 authors for additional information which was granted by five [25, 29, 39,
189 49, 51].

190

191 Insert here: fig. 1

192

193 90% of the studies were conducted in Europe including Russia, 50% in Germany, and 10% in Asia. Three
194 trials were blinded, four studies or datasets were not randomized. Different mistletoe preparations
195 with varying conventional treatments were compared to conventional treatment (alone in 22 cases or
196 plus an additional comparator in eight cases, respectively) for multiple types and stages of cancer. In
197 nine studies QoL was measured with EORTC-QLQ-C30, six studies assessed self-regulation, and the
198 others used one or multiple other instruments. The study characteristics are displayed in table 1.

199

200 Insert here: tab. 1

201

202 The results of the overall meta-analysis are presented in Figure 2.

203 Insert here: Figure 2.

204

205

206 As can be seen the studies are highly heterogeneous ($I^2 = 84\%$), and hence the random effects model
207 is applied to estimate the combined standardized mean difference as $d = 0.61$ (95% CI 0.41-0.81,
208 $p < 0.00001$, $z = 6.05$).

209 The meta-analyses of the sub-dimensions of QoL are shown in table 2. The SMD of seven out of 14 QoL
210 dimensions are significant ($p \leq 0.05$). The pooled SMD of role and social functioning are 0.63 (95% CI
211 0.05-1.22) and 0.62 (95% CI 0.22-1.03), respectively. For pain, it is $SMD = -0.86$ (95% CI -1.54-(-0.18))
212 and for nausea, it is $SMD = -0.55$ (95% CI -1-(-0.1)).

213

214

215

216 Insert here: tab. 2

217

218 The risk of bias assessment is displayed in the figures 3 and 4. 65% had an overall high risk of bias which
219 resulted for most studies from the 85% high risk of bias in the measurement of outcome. This can be
220 attributed to the missing blinding process, the QoL assessment as patient-reported outcome, and the
221 uncertain appropriateness of some measurement instruments which may only incompletely capture
222 the concept of QoL.

223

224 Insert here: fig. 3

225

226 The five non-randomized trials [30, 33-35, 42] were additionally assessed with the Newcastle-Ottawa-
227 scale. All studies had an overall score of 7 out of a maximum of 9. The sums in the selection, the
228 comparability and the outcome/exposure domain were 3, 2 and 2, respectively, for all studies.

229

230

231 Insert here: fig. 4

232

233 The sensitivity analyses are presented in Table 3.

234

235 Insert here: tab. 3

236

237 The sensitivity analyses confirmed the robustness of the results. Neither the methodological nor other
238 moderator variables showed strong deviations. With the exception of the non-randomized studies
239 (non-randomized: $d = 0.38$, $p = 0.1$), the lung cancer studies ($d = -0.18$, $p = 0.15$), the studies conducted
240 with Lektinol ($d = 0.67$, $p = 0.1$), and the studies using an index measure (e.g. Karnofsky index) as
241 outcome ($d = 0.33$, $p = 0.1$) all other moderator analyses showed no appreciable differences between
242 subgroups and yielded highly significant effect sizes. In tendency, methodologically more rigorous
243 studies yielded higher or equally high effect sizes than less rigorous ones. Most notably, randomized
244 studies yielded a higher effect size ($d = 0.70$, $p = 0.001$) than non-randomized ones ($d = 0.38$, $p = 0.1$).
245 Studies using active controls ($d = 0.6$, $p = 0.004$) did not differ from studies using other controls ($d =$
246 0.65 , $p < 0.001$). Various types of additional treatment did not show differential effect sizes, except
247 individualized best care, which, however, is an estimate based on only one study and hence not
248 reliable. Although the effect sizes of the various products vary, their confidence intervals overlap, and
249 hence suggest the conclusion that they are roughly equally effective. There is no difference in effect
250 sizes depending on countries, type of sponsoring, or type of measures. Studies that relied on corporate

251 sponsoring, and studies using only a single index measure yielded a somewhat smaller effect size,
252 although confidence intervals overlap and thus signal non-significant differences.

253

254

255 The three meta-regressions are presented in Table 4 and in Figures 5 and 6.

256

257 Insert here: tab. 4

258

259 Insert here: fig. 5

260

261

262 The study year is positively correlated with effect size. For each year the study was more recent the
263 estimated QoL-effect size is larger by $d = 0.03$. Although there is a tendency for a larger effect size in
264 younger patients this effect is not significant. The slope of the regression line for the duration of
265 treatment is borderline significant, indicating that longer treatment produces effects that are 0.04
266 standard deviations larger per additional treatment week. Note though that only treatments between
267 5 and 52 weeks have entered the analysis and the variance is not large.

268

269 Insert here: fig. 6

270

271 Publication bias was estimated using two methods. Egger's regression intercept model regresses effect
272 size on precision of study with the assumption that smaller studies that are less precise will more often
273 go unpublished. A regression line with a lot of smaller and more imprecise studies missing should thus
274 miss the origin by a large margin. In our analysis the intercept of the regression is 0.82 with a non-
275 significant deviation from the origin ($t = 0.65$, p -value two tailed = 0.5). Duval and Tweedie's trim and
276 fill method is an extension of the graphical funnel plot analysis and analyzes how many studies would

277 have to be trimmed to generate a perfectly symmetrical funnel plot. In our analysis this method
278 estimates no studies to be trimmed on the left side, i.e on the negative or low side of the effect size
279 estimate and an estimate of 7 trimmed studies on the right side, i.e. on the positive side of the effect
280 size funnel with an adjustment that leads to a higher effect size, if the studies are trimmed. These two
281 analyses of publication bias show that publication bias is not a likely explanation of this result and any
282 funnel asymmetries are not due to unpublished studies but due to positive outliers.

283

284

285 Discussion

286 This meta-analysis shows a significant and robust medium-sized effect of $d = 0.61$ of viscum album
287 extract (VAE) treatment on QoL in cancer patients.

288 The results should be regarded in the light of the following facts:

289 The included studies vary with regard to the cancer site, the control intervention, the additional
290 oncological treatment, and the VAE. While sensitivity analyses confirmed the robustness and reliability
291 of the findings, they could not account for the heterogeneity of the effect sizes. Neither
292 methodological moderators (blinded vs. unblinded studies, randomized versus non-randomized,
293 studies with high versus low risk of bias, active versus non-active control) nor structural moderators
294 (type of outcome measure, funding, VAE product used, additional treatment) could clarify the
295 heterogeneity. We suspect that this is due to multiple interactions between cancer types and stages,
296 treatments and structural variables that cannot be explored with a limited set of 30 studies.
297 Nevertheless, our sensitivity analyses document the overall robustness of the effect, as none of the
298 levels of moderators exhibits significant deviations from other levels or from the overall effect size.
299 This gives our effect size estimate of $d = 0.61$ reliability.

300 Although the overall risk of bias is high in many studies, one should bear in mind two aspects. First, we
301 applied the intention-to-treat-algorithm of Rob2 as the more conservative approach and not the per-
302 protocol evaluation which may have resulted in a better overall bias. Second, due to the local skin

303 reaction of VAE application the blinding of participants and carers is practically impossible and could
304 only have been implemented reliably with an active placebo, which is ethically questionable. In Rob2
305 this leads to a high risk of bias in the measurement of the outcome. On the one hand, the lack of
306 blinding might have biased the results since most QoL are self-reported and there may be strong beliefs
307 among users of anthroposophic medicine which might additionally be fortified by the severity of the
308 disease and the hope that an additional treatment has a positive impact [52]. It was shown that these
309 attitudes are correlated with a better QoL [53]. On the other hand, there is no evidence from the
310 included studies that the attitudes differed between treatment arms and if patients in the control
311 group searched and used for surrogate medications for the VAE, this bias would favor the comparator.
312 Furthermore, our sensitivity analysis gives no indication that studies with blinding and without blinding
313 estimate different effect sizes and there is also no difference in effect sizes between studies from
314 Germany – where mistletoe is well known – and other countries where mistletoe is less known and
315 used. The results of the Newcastle-Ottawa-Scale, finally, indicate a good methodological quality for
316 the non-randomized trials that were included in the review.

317
318 Another limitation is that self-regulation, the Karnofsky performance index, or the ECOG scale cover
319 important aspects of QoL, but are different in content from other measures such as the global QoL of
320 the EORTC-QLQ C30 scale. This source of heterogeneity was also addressed by our sensitivity analyses.
321 This showed that, indeed, as one would expect, single item indices estimate lower effect sizes,
322 although the difference is not significant. In the same vein, the inclusion of non-randomized and non-
323 interventional trials might have biased the results due to their lower internal validity, but their
324 exclusion during sensitivity analyses again did not alter the significance of the pooled outcome. In
325 addition, four of the five non-RCTs had a matched-pair design which increases the comparability
326 between treatment arms compared to other types of group allocation.

327 The meta-regression shows that more recent studies have higher effect sizes compared to older
328 studies. This is counterintuitive at first sight, as normally more recent studies are implemented with

329 more methodological rigor due to the GCP guidelines and a higher methodological skill of trialists. This,
330 one would think, should, if at all, lead to smaller effect sizes in more recent trials. The fact that this is
331 not the case shows, together with our sensitivity analysis that methodological bias is an unlikely
332 explanation for the effect size found. However, another point is worth bearing in mind: earlier studies
333 were very often implemented with severely ill patients with tumor status IV or in palliative care. Only
334 in more recent studies was VAE also used as add on treatment in first line patients with a relatively
335 good chance of surviving. Thus the higher effect size for more recent studies might also reflect the less
336 severe status of these patients.

337

338 Our review has a number of strengths. First, we conducted a comprehensive search for published and
339 grey literature with no time or language limitation to minimize publication bias. Our analysis of
340 publication bias supports the conclusion that the effect size estimate is not due to publication bias.
341 Some authors who we contacted, however, failed to provide additional information and the respective
342 studies were consequently excluded. Second, we calculated a pooled SMD for a global measure of QoL
343 and for its subdomains such as pain or fatigue. Third, we analyzed the data both with Revman 5.3 and
344 CMA software which implements the Hunter-Schmidt-corrections for small sample bias. We did both
345 analyses in parallel and independently, thus preventing coding or typing errors from biasing our results.

346

347 The weaknesses of this review are obvious. Any meta-analysis can only be as good as the original
348 studies entered. Some of these studies are large and methodologically strong. But some are also badly
349 reported, small and with a mixed patient load. In some cases we had to recalibrate confidence interval
350 estimates, because the data given were not detailed enough. Although it would have been desirable,
351 the variance between cancer types and stages was too large to allow for detailed assessments and
352 separate analyses, which might have reduced the heterogeneity. Although we can testify to the
353 robustness of the overall effect size estimate, we have not succeeded in clarifying the heterogeneity
354 of the studies. This requires multi-center studies in large cohorts of patients with large budgets. Thus,

355 one consequence of this meta-analysis would be to call for more serious efforts from public funders to
356 study the effects of VAEs in large and homogeneous patient cohorts to confirm or disconfirm the
357 results of this analysis.

358

359 Clinical relevance

360 Our results indicate a statistically significant and clinically valuable improvement of the subjective well-
361 being of patients with different types of cancer after the treatment with VAE. The analyses for the
362 subdomains revealed a significant pooled SMD for important symptoms and functioning indices,
363 whereas other show a positive, yet not significant effect of VAE compared to control. Whether these
364 vital elements of QoL such as emotional functioning or fatigue are influenced remain statistically
365 uncertain. Overall, a robust estimate of an improvement of $d = 0.61$ in quality of life represents a
366 medium-sized [54] and clinically relevant [55, 56] effect that makes VAE treatment a viable add-on
367 option to any anticancer treatment.

368

369 Conclusion

370 Our analysis provides evidence that global QoL in cancer patients is positively influenced by VAE.
371 Because the risk of bias and the heterogeneity is high, future research needs to better assess the actual
372 impact. Large studies in homogeneous patient populations are required to address these problems.

373

374

375 **Declarations**

376 **Ethics Approval and Consent to Participate**

377 Not applicable

378 **Consent for Publication**

379 Not applicable

380 Availability of Data and Materials

381 The database on which this study is based is available on request from the authors.

382 Competing Interests

383 The authors have no conflict of interest to declare.

384 Funding

385 This study was funded by the Förderverein komplementärmedizinische Forschung, Arlesheim,

386 Switzerland.

387 Authors' Contributions

388 Both authors contributed equally. HW developed the protocol, ML edited and improved it and

389 submitted it to PROSPERO. ML developed and implemented the search strategy. Both authors

390 extracted the data independently, discussed discrepancies, and calculated the analyses

391 independently. ML calculated the quantitative analysis reported and HW calculated the sensitivity

392 analyses reported. ML wrote the first draft of the paper and HW edited and contributed to writing.

393 Both authors analyzed and interpreted the data. All authors have read and approved the manuscript.

394 Acknowledgment

395 Not applicable

396 Author's information

397 Harald Walach is a professor with Poznan Medical University, where he teaches mindfulness to the

398 international medical students, and he is a visiting professor with University Witten-Herdecke, where

399 he teaches philosophical foundations of psychology to psychology undergraduates. Apart from that

400 he is founder and director of the Change Health Science Institute (www.chs-institute.org) , based in

401 Berlin Germany. Martin Loeff is an independent researcher and Harald Walach's partner in the CHS
402 Institute, Berlin. He is a specialist in conducting systematic reviews and meta-analyses and lifestyle
403 diagnostics.

404

405

406

407 References

408

- 409 1. Fornaro M, Clementi N, Fornaro P. Medicine and psychiatry in Western culture: Ancient
410 Greek myths and modern prejudices. *Annals of General Psychiatry*. 2009;8(1):21.
- 411 2. Riddle JM. Folk tradition and folk medicine: recognition of drugs in classical antiquity.
412 *Pharmacy in history*. 2013;55(2/3):64-87.
- 413 3. Steiner R. Geisteswissenschaft und Medizin: zwanzig Vorträge, gehalten in Dornach vom 21.
414 März bis 9. April 1920 vor Ärzten und Medizinstudierenden: Rudolf-Steiner-Verlag; 1985.
- 415 4. Pfüller U. Chemical Constituents of European Mistletoe (*Viscum album* L.) Isolation and
416 Characterisation of the Main Relevant Ingredients: Lectins, Viscotoxins, Oligo-/polysaccharides,
417 Flavonoides, Alkaloids. *Mistletoe*: CRC Press; 2003. p. 117-38.
- 418 5. Berg JM, Tymoczko JL, Stryer L. *Biochemistry*/Jeremy M. Berg, John L. Tymoczko, Lubert
419 Stryer; with Gregory J. Gatto, Jr. New York: WH Freeman; 2012.
- 420 6. Hoessli DC, Ahmad I. Mistletoe lectins: carbohydrate-specific apoptosis inducers and
421 immunomodulators. *Current Organic Chemistry*. 2008;12(11):918-25.
- 422 7. Hajto T, Hostanska K, Gabius H-J. Modulatory potency of the β -galactoside-specific lectin
423 from mistletoe extract (Iscador) on the host defense system in vivo in rabbits and patients. *Cancer*
424 *Research*. 1989;49(17):4803-8.
- 425 8. Hülsen H, Born U. Einfluss von Mistelpräparaten auf die In-vitro-Aktivität der natürlichen
426 Killerzellen von Krebspatienten (Teil 2). *Therapeutikon*. 1993;7(10):434-9.
- 427 9. Büssing A, Suzart K, Bergmann J, Pfüller U, Schietzel M, Schweizer K. Induction of apoptosis in
428 human lymphocytes treated with *Viscum album* L. is mediated by the mistletoe lectins. *Cancer*
429 *letters*. 1996;99(1):59-72.
- 430 10. Greń A, Formicki G, Massanyi P, Szaroma W, Lukáč N, Kapusta E. Use of Iscador, an extract of
431 mistletoe (*Viscum album* L.) in treatment. *Journal of Microbiology, Biotechnology and Food Sciences*.
432 2019;2019:19-20.
- 433 11. Huber R, Rostock M, Goedl R, Ludtke R, Urech K, Buck S, Klein R. Mistletoe treatment induces
434 GM-CSF-and IL-5 production by PBMC and increases blood granulocyte-and eosinophil counts: a
435 placebo controlled randomized study in healthy subjects. *European journal of medical research*.
436 2005;10(10):411.
- 437 12. Oei SL, Thronicke A, Schad F. Mistletoe and Immunomodulation: Insights and Implications for
438 Anticancer Therapies. *Evidence-Based Complementary and Alternative Medicine*. 2019;2019.
- 439 13. Büssing A, Raak C, Ostermann T. Quality of life and related dimensions in cancer patients
440 treated with mistletoe extract (iscador): a meta-analysis. *Evidence-Based Complementary and*
441 *Alternative Medicine*. 2012;2012.
- 442 14. Ernst E, Schmidt K, Steuer-Vogt MK. Mistletoe for cancer? A systematic review of randomised
443 clinical trials. *International journal of cancer*. [Journal: Review]. 2003;107(2):262-7.
- 444 15. Freuding M, Keinki C, Kutschan S, Micke O, Buentzel J, Huebner J. Mistletoe in oncological
445 treatment: a systematic review: Part 2: quality of life and toxicity of cancer treatment. *Journal of*
446 *cancer research and clinical oncology*. 2019b.
- 447 16. Freuding M, Keinki C, Micke O, Buentzel J, Huebner J. Mistletoe in oncological treatment: a
448 systematic review. *Journal of cancer research and clinical oncology*. 2019a;145(3):695-707.
- 449 17. Horneber M, Bueschel G, Huber R, Linde K, Rostock M. Mistletoe therapy in oncology.
450 *Cochrane Database of Systematic Reviews*. 2008(2).
- 451 18. Kienle GS, Kiene H. Influence of *Viscum album* L (European mistletoe) extracts on quality of
452 life in cancer patients: a systematic review of controlled clinical studies. *Integrative cancer therapies*.
453 2010;9(2):142-57.
- 454 19. Melzer J, Iten F, Hostanska K, Saller R. Efficacy and safety of mistletoe preparations (*Viscum*
455 *album*) for patients with cancer diseases. *Complementary Medicine Research*. 2009;16(4):217-26.

- 456 20. Higgins JPT, Thomas J, Chandler J, Cumpston M LT, Page MJ, VA W, editors. Cochrane
457 Handbook for Systematic Reviews of Interventions Version 6: The Cochrane Collaboration; 2019.
- 458 21. Cochrane. RoB 2: A revised Cochrane risk-of-bias tool for randomized trials. 2019
459 [17.05.2019]; Available from: [https://methods.cochrane.org/bias/resources/rob-2-revised-cochrane-](https://methods.cochrane.org/bias/resources/rob-2-revised-cochrane-risk-bias-tool-randomized-trials)
460 [risk-bias-tool-randomized-trials](https://methods.cochrane.org/bias/resources/rob-2-revised-cochrane-risk-bias-tool-randomized-trials).
- 461 22. Wells G. The Newcastle-Ottawa Scale (NOS) for assessing the quality of non randomised
462 studies in meta-analyses. http://www.ohrica.com/programs/clinical_epidemiology/oxfordasp. 2001.
- 463 23. Higgins JP, Thompson SG. Quantifying heterogeneity in a meta-analysis. *Statistics in*
464 *medicine*. 2002;21(11):1539-58.
- 465 24. Sterne JA, Egger M. Regression methods to detect publication and other bias in meta-
466 analysis. *Publication bias in meta-analysis: Prevention, assessment and adjustments*. 2005:99-110.
- 467 25. Bar-Sela G, Wollner M, Hammer L, Agbarya A, Dudnik E, Haim N. Mistletoe as complementary
468 treatment in patients with advanced non-small-cell lung cancer treated with carboplatin-based
469 combinations: a randomised phase II study. *Eur J Cancer*. 2013;49(5):1058-64.
- 470 26. Borrelli E. Evaluation of the quality of life in breast cancer patients undergoing lectin
471 standardized mistletoe therapy. *Minerva medica*. 2001;92(Suppl 1 Nr 3):105-7.
- 472 27. Dold ULE, H. Ch. Mäurer, D. Müller-Wening, B. Sakellariou, F. Trendelenburg, G. Wagner, .
473 *Krebszusatztherapie beim fortgeschrittenen nicht-kleinzelligen Bronchialkarzinom*. Stuttgart-New
474 York: Georg Thieme Verlag; 1991.
- 475 28. Enesel MB, Acalovschi I, Grosu V, Sbarcea A, Rusu C, Dobre A, Weiss T, ZARKOVIC N.
476 Perioperative application of the *Viscum album* extract Isorel in digestive tract cancer patients.
477 *Anticancer research*. 2005;25(6C):4583-90.
- 478 29. Grah C. *Misteltherapie bei nichtkleinzelligem Bronchialkarzinom*. Berlin: Fu-Berlin; 2010.
- 479 30. Grossarth-Maticek R, Ziegler R. Prospective controlled cohort studies on long-term therapy of
480 breast cancer patients with a mistletoe preparation (Iscador®). *Complementary Medicine Research*.
481 2006a;13(5):285-92.
- 482 31. Grossarth-Maticek R, Ziegler R. Randomised and non-randomised prospective controlled
483 cohort studies in matched-pair design for the long-term therapy of breast cancer patients with a
484 mistletoe preparation (Iscador): a re-analysis. *European journal of medical research*.
485 2006b;11(11):485.
- 486 32. Grossarth-Maticek R, Ziegler R. Efficacy and safety of the long-term treatment of melanoma
487 with a mistletoe preparation (Iscador). *SCHWEIZERISCHE ZEITSCHRIFT FÜR GANZHEITS MEDIZIN*.
488 2007c;19(6):325.
- 489 33. Grossarth-Maticek R, Ziegler R. Prospective controlled cohort studies on long-term therapy of
490 ovarian cancer patients with mistletoe (*Viscum album* L.) extracts Iscador. *Arzneimittelforschung*.
491 2007b;57(10):665-78.
- 492 34. Grossarth-Maticek R, Ziegler R. Prospective controlled cohort studies on long-term therapy of
493 cervical cancer patients with a mistletoe preparation (Iscador®). *Complementary Medicine Research*.
494 2007a;14(3):140-7.
- 495 35. Grossarth-Maticek R, Ziegler R. Randomized and non-randomized prospective controlled
496 cohort studies in matched pair design for the long-term therapy of corpus uteri cancer patients with
497 a mistletoe preparation (Iscador). *European journal of medical research*. 2008;13(3):107.
- 498 36. Heiny B. Additive Therapie mit standardisiertem Mistelextrakt reduziert die Leukopenie und
499 verbessert die Lebensqualität von Patientinnen mit fortgeschrittenem Mammakarzinom unter
500 palliativer Chemotherapie (VEC-Schema). *Krebsmedizin*. 1991;12:1-14.
- 501 37. Heiny BM, Albrecht V, Beuth J. Stabilization of the quality of life by mistletoe lectin-1
502 standardized mistletoe extract in advanced colorectal carcinoma. *Onkologe*. [Journal: Short Survey].
503 1998;4(SUPPL. 1):S35-S8.
- 504 38. Kaiser G, Büschel M, Horneber M, Smetak M, Birkmann J, Braun W, Fischer S, Laue Hv, Scheer
505 R, Gallmaier W. Studiendesign und erste Ergebnisse einer prospektiven placebokontrollierten,
506 randomisierten Studie mit *AbnobaViscum Mali* 4. Die Mistel in der Tumorthherapie
507 *Grundlagenforschung und Klinik*: KVC publisher; 2001. p. 485-505.

- 508 39. Kim KC, Yook JH, Eisenbraun J, Kim BS, Huber R. Quality of life, immunomodulation and safety
509 of adjuvant mistletoe treatment in patients with gastric carcinoma - a randomized, controlled pilot
510 study. *BMC Complement Altern Med*. 2012;12(172):1472-6882.
- 511 40. Lange O, Scholz G, Gutsch J. Modulation of the subjective and objective toxicity of an
512 aggressive chemoradiotherapy with Helixor [Modulation der subjektiven und objektiven Toxizität
513 einer aggressiven Chemo/Radiotherapie mit Helixor]. *Helixor*. 1988:unpublished manuscript.
- 514 41. Lenartz D, Stoffel B, Menzel J, Beuth J. Immunoprotective activity of the galactoside-specific
515 lectin from mistletoe after tumor destructive therapy in glioma patients. *Anticancer research*.
516 1996;16(6B):3799-802.
- 517 42. Loewe-Mesch A, Kuehn J, Borho K, Abel U, Bauer C, Gerhard I, Schneeweiss A, Sohn C,
518 Strowitzki T, Von Hagens C. Adjuvante simultane Mistel-/Chemotherapie bei Mammakarzinom-
519 Einfluss auf Immunparameter, Lebensqualität und Verträglichkeit. *Complementary Medicine*
520 *Research*. 2008;15(1):22-30.
- 521 43. Longhi A, Mariani E, Kuehn JJ. A randomized study with adjuvant mistletoe versus oral
522 Etoposide on post relapse disease-free survival in osteosarcoma patients. *European journal of*
523 *integrative medicine*. 2009;1(1):31-9.
- 524 44. Piao BK, Wang YX, Xie GR, Mansmann U, Matthes H, Beuth J, Lin HS. Impact of
525 complementary mistletoe extract treatment on quality of life in breast, ovarian and non-small cell
526 lung cancer patients. A prospective randomized controlled clinical trial. *Anticancer Res*.
527 2004;24(1):303-9.
- 528 45. Semiglasov VF, Stepula VV, Dudov A, Lehmacher W, Mengs U. The standardised mistletoe
529 extract PS76A2 improves QoL in patients with breast cancer receiving adjuvant CMF chemotherapy: a
530 randomised, placebo-controlled, double-blind, multicentre clinical trial. *Anticancer research*. [Clinical
531 Trial; Journal Article; Multicenter Study; Randomized Controlled Trial; Research Support, Non-U.S.
532 Gov't]. 2004;24(2C):1293-302.
- 533 46. Semiglasov VF, Stepula VV, Dudov A, Schnitker J, Mengs U. Quality of life is improved in
534 breast cancer patients by Standardised Mistletoe Extract PS76A2 during chemotherapy and follow-
535 up: a randomised, placebo-controlled, double-blind, multicentre clinical trial. *Anticancer Res*.
536 2006;26(2B):1519-29.
- 537 47. Steuer-Vogt M, Bonkowsky V, Scholz M, Fauser C, Licht K, Ambrosch P. Influence of ML-1
538 standardized mistletoe extract on the quality of life in head and neck cancer patients. *Hno*.
539 2006;54(4):277-86.
- 540 48. Tröger W, Jezdic S, Zdrle Z, Tisma N, Hamre HJ, Matijasevic M. Quality of life and
541 neutropenia in patients with early stage breast cancer: a randomized pilot study comparing
542 additional treatment with mistletoe extract to chemotherapy alone. *Breast cancer: basic and clinical*
543 *research*. [Journal: Article]. 2009;3(1):35-45.
- 544 49. Tröger W, Zdrle Z, Tisma N, Matijasevic M. Additional therapy with a mistletoe product
545 during adjuvant chemotherapy of breast cancer patients improves quality of life: an open
546 randomized clinical pilot trial. *Evidence-Based Complementary and Alternative Medicine*. [Journal:
547 Article]. 2014a;2014.
- 548 50. Tröger W, Galun D, Reif M, Schumann A, Stanković N, Milićević M. Quality of life of patients
549 with advanced pancreatic cancer during treatment with mistletoe: a randomized controlled trial.
550 *Deutsches Ärzteblatt International*. [Clinical Trial, Phase III; Journal Article; Randomized Controlled
551 Trial]. 2014b;111(29-30):493-502, 33 p following
- 552 51. Tröger W, Galun D, Reif M, Schumann A, Stankovic N, Milicevic M. Quality of life of patients
553 with advanced pancreatic cancer during treatment with mistletoe: a randomized controlled trial.
554 *Deutsches Ärzteblatt International*. 2014;111(29-30):493.
- 555 52. von Rohr E, Pampallona S, van Wegberg B, Cerny T, Hürny C, Bernhard J, Helwig S, Heusser P.
556 Attitudes and beliefs towards disease and treatment in patients with advanced cancer using
557 anthroposophical medicine. *Oncology research and treatment*. 2000;23(6):558-63.
- 558 53. Beadle GF, Yates P, Najman JM, Clavarino A, Thomson D, Williams G, Kenny L, Roberts S,
559 Mason B, Schlect D. Illusions in advanced cancer: the effect of belief systems and attitudes on quality

- 560 of life. *Psycho-Oncology: Journal of the Psychological, Social and Behavioral Dimensions of Cancer*.
561 2004;13(1):26-36.
- 562 54. Cohen J. *Statistical power analysis for the behavioral sciences*. 2nd ed. Hillsdale, NJ: Lawrence
563 Erlbaum Associates, Publishers; 1988.
- 564 55. Osoba D, Rodrigues G, Myles J, Zee B, Pater J. Interpreting the significance of changes in
565 health-related quality-of-life scores. *Journal of clinical oncology*. 1998;16(1):139-44.
- 566 56. Cella D, Eton DT, Fairclough DL, Bonomi P, Heyes AE, Silberman C, Wolf MK, Johnson DH.
567 What is a clinically meaningful change on the Functional Assessment of Cancer Therapy–Lung (FACT-
568 L) questionnaire?: Results from eastern cooperative oncology group (ECOG) study 5592. *Journal of*
569 *clinical epidemiology*. 2002;55(3):285-95.
- 570 57. Longhi A, Reif M, Mariani E, Ferrari S. A randomized study on postrelapse disease-free
571 survival with adjuvant mistletoe versus oral etoposide in osteosarcoma patients. *Evidence-Based*
572 *Complementary and Alternative Medicine*. 2014;2014.
- 573
- 574
- 575
- 576

577 List of figure and table legends

578 Fig. 1: Flow of literature search process

579 Fig. 2: Overall Meta-analysis of all included data sets

580 Fig. 3: Summary of risk of bias assessment as percentage (intention-to-treat)

581 Fig. 4: Risk of bias assessment by domain and overall bias

582 Fig. 5: Scatterplot of the meta-regression of study year on effect-size

583 Fig. 6: Scatterplot of the meta-regression of treatment duration on effect size

584

585 Tab. 1: Characteristics of included studies

586 Tab. 2: Effect sizes of sub-dimensions of QoL that could be pooled by meta-analyses (positive [negative]
587 values in functioning [symptom] dimensions indicate improvement for VAE vs. control)

588 Table 3: Sensitivity analyses according to various moderators

589 Table 4: Meta-regression results

590

591

592

593

594

595

596

597

598

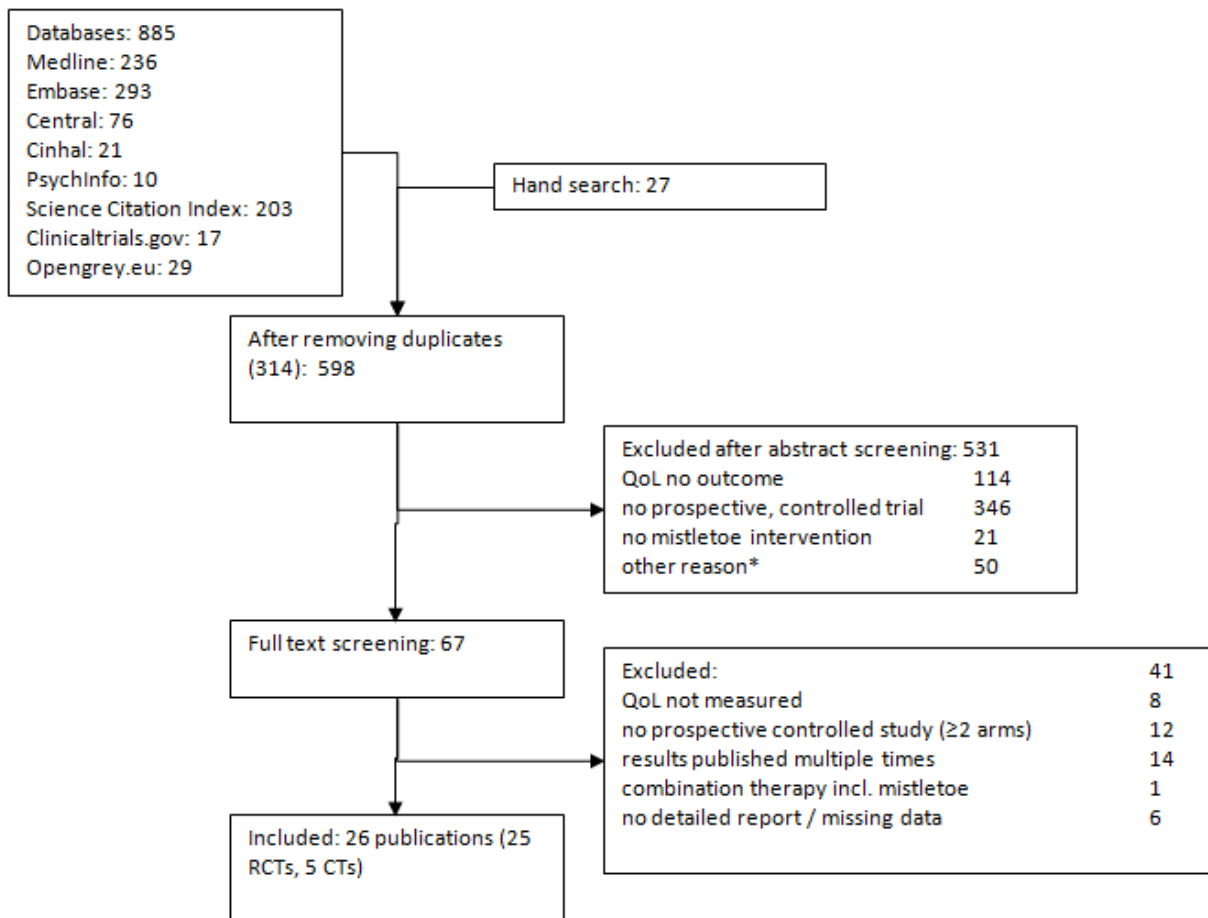
599

600

601

602

603 Fig. 1



604

605 *e.g. not human, ongoing trials, finished trials without reports, results published multiple times

606

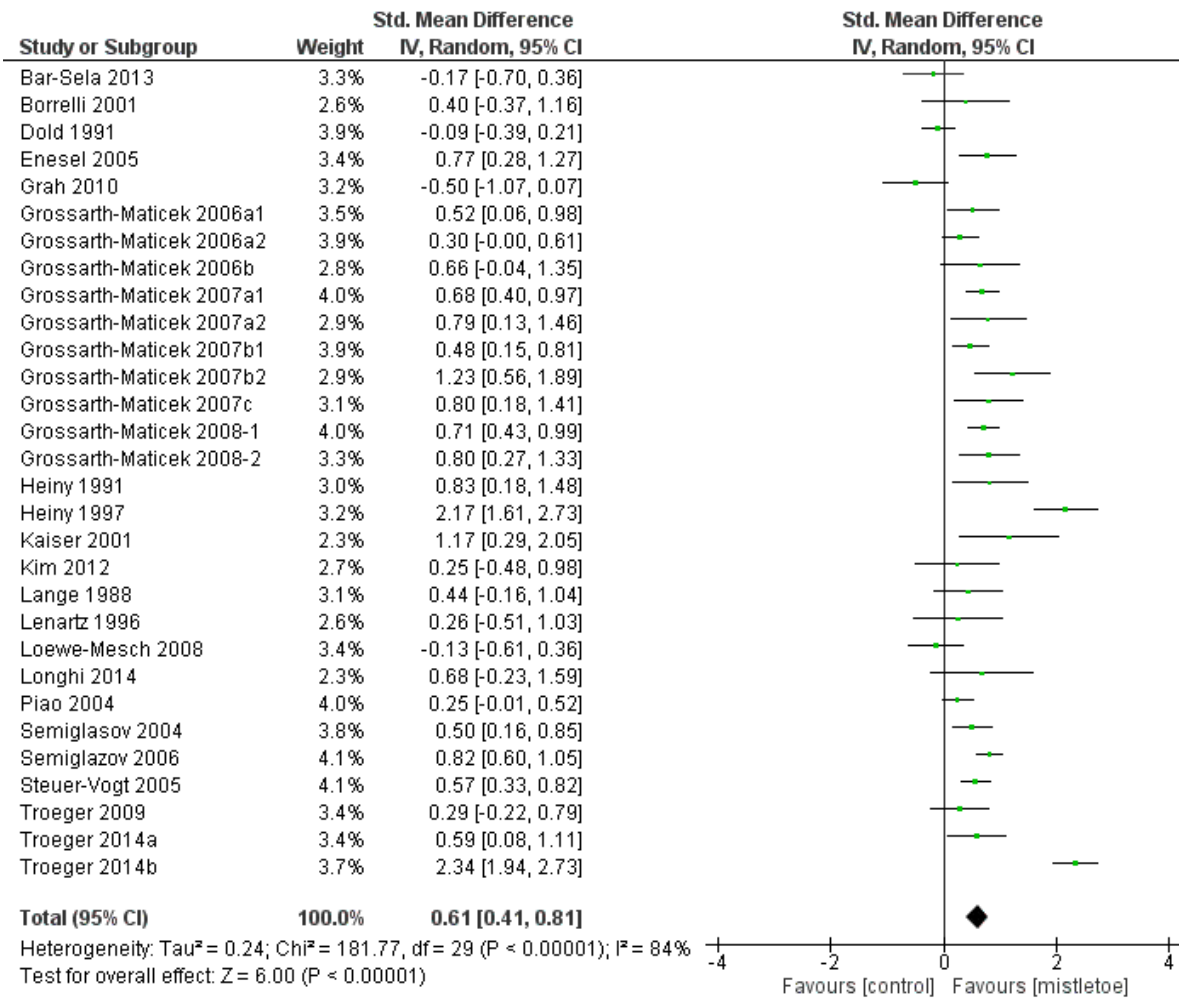
607

608

609

610 Fig. 2

611



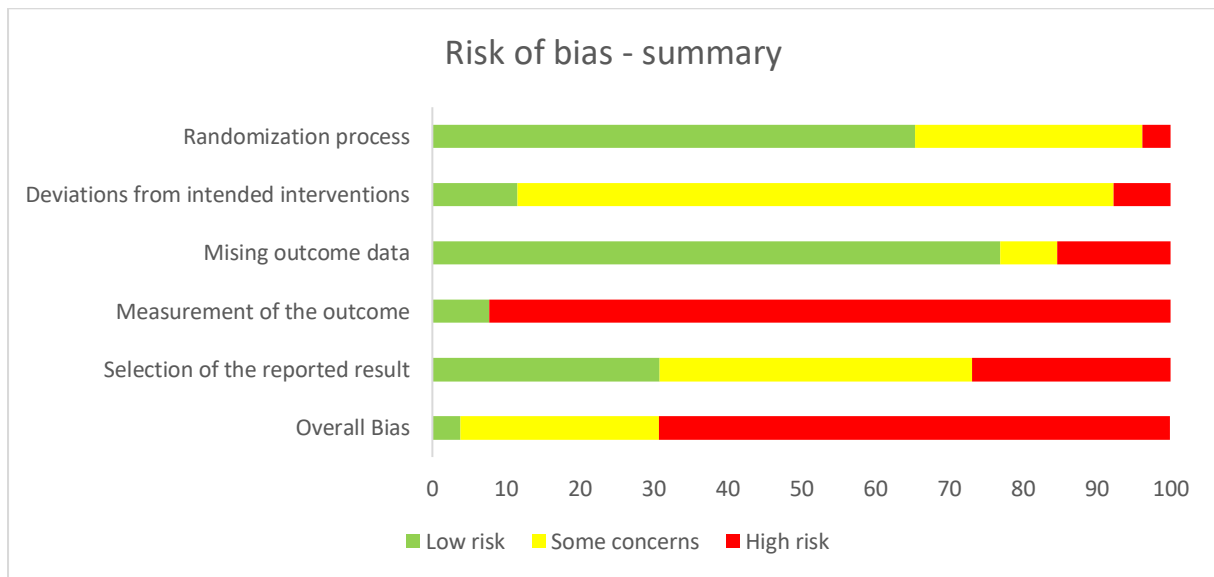
612

613

614

615 Fig. 3

616



617

618

619

620 Fig. 4

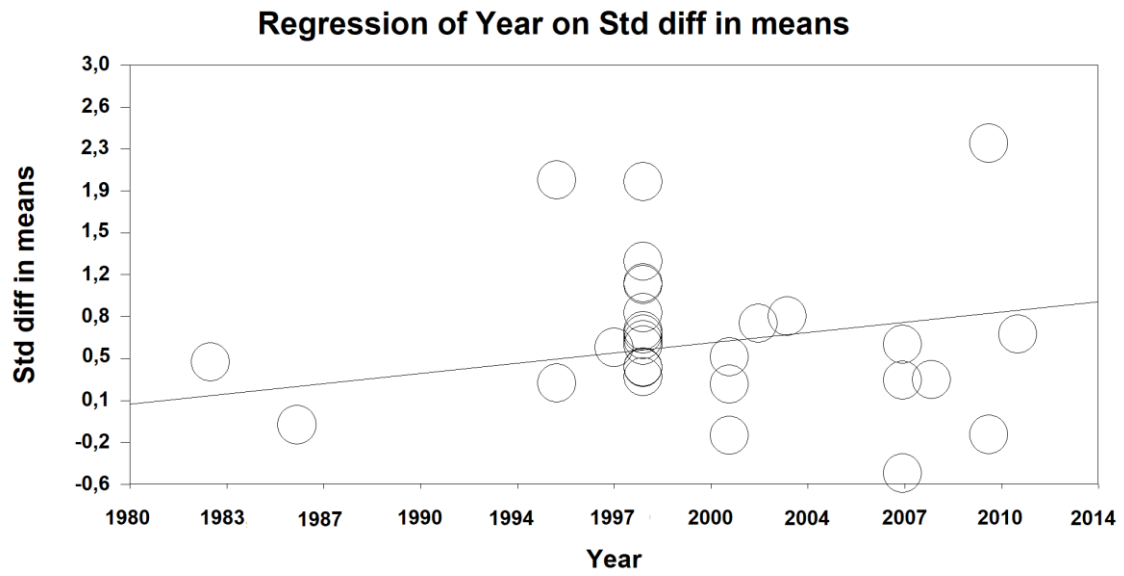
Trial ID	Outcome	Randomization process	Deviations from intended interventions	Missing outcome data	Measurement of the outcome	Selection of the reported result	Overall Bias
Bar-Sela_2013	EORTC-QLQ-C30	+	?	+	-	+	!
Borrelli_2001	Spitzer QoL	?	?	+	-	?	-
Dold_1991	Karnofsky index	+	?	?	-	+	-
Enesel_2005	Karnofsky index	?	?	+	-	?	-
Grah_2010	EORTC-QLQ C30	+	?	+	-	+	!
Grossarth-Maticcek_2006a	self-regulation	+	?	+	-	+	-
Grossarth-Maticcek_2006b	self-regulation	+	?	+	-	-	-
Grossarth-Maticcek_2007a	self-regulation	+	?	+	-	-	-
Grossarth-Maticcek_2007b	self-regulation	+	?	+	-	-	-
Grossarth-Maticcek_2007c	self-regulation	+	?	+	-	?	-
Grossarth-Maticcek_2008	self-regulation	+	?	+	-	-	-
Heiny_1991	5-point scale	?	-	?	-	?	-
Heiny_1997	FACT	?	?	+	-	?	-
Kaiser_2001	ECOG	?	+	-	-	-	-
Kim_2012	EORTC-QLQ-C30	+	?	+	-	+	!
Lange_1988	Karnofsky Index	?	?	-	-	?	-
Lenartz_1996	Spitzer QoL	?	-	-	-	?	-
Loewe-Mesch_2008	EORTC-QLQ-C30	-	?	-	-	?	-
Longhi_2014	EORTC-QLQ-C30	+	?	+	-	+	!
Piao_2004	FLIC	?	?	+	-	-	-
Semiglasov_2004	GLQ-8	+	+	+	+	-	!
Semiglasov_2006	FACT	+	+	+	+	?	+
Steuer-Vogt_2006	EORTC-QLQ-C30	+	?	+	-	?	-
Troeger_2009	EORTC-QLQ-C30	+	?	+	-	?	-
Troeger_2014a	EORTC-QLQ-C30	+	?	+	-	+	!
Troeger_2014b	EORTC-QLQ-C30	+	?	+	-	+	!

621

622

623 Fig. 5

624

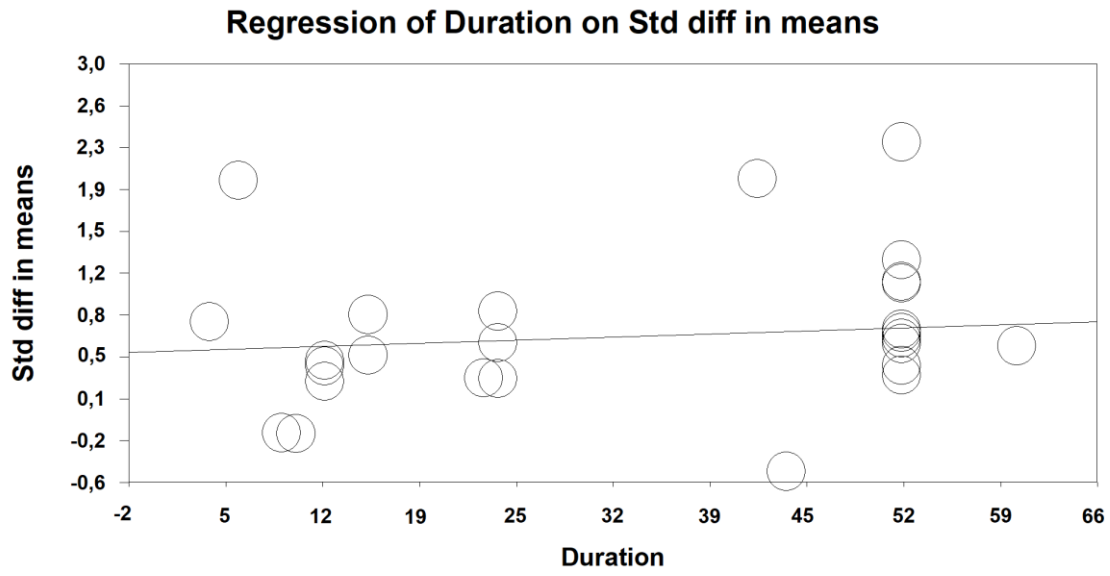


625

626

627 Fig. 6

628



629

630

Tab. 1

Reference	Country	Study type	Participants (number at baseline; number of females; mean age)		Cancer, stage	Intervention		QoL measurement
			verum	control		verum	control	
Bar-Sela 2013	Israel	single-center, randomized, 2 arms, unblinded, interventional	33; 5; 63	39; 11; 62	lung cancer (NSCLC), IIIa, IIIb, IV	chemotherapy, Iscador Q	chemotherapy	EORTC-QLQ-C30
Borrelli 2001	Italy*	randomized, 2 arms, unblinded, interventional	20; 20; n/a	10; 10; n/a	breast cancer, IV	surgery/ chemotherapy, then mistletoe extract	surgery/ chemotherapy, then water	Spitzer QoL
Dold 1991	Germany	multi-center, randomized, 2 arms, unblinded, interventional	114; 6; 65,6	113; 6; 67,5	lung cancer (NSCLC), I-IV	conventional oncological therapy, Iscador Q	conventional oncological therapy, BVK Roche	KPI
Enesel 2005	Romania*	randomized, 2 arms, unblinded, interventional	40; n/a; n/a	30; n/a; n/a	digestive tract cancer, n/a	surgery, Isorel A	surgery	KPI
Grah 2010	Germany	single-center, randomized, 2 arms, unblinded, interventional	26; 7; 64,3	24; 7; 63	lung cancer (NSCLC), IIIb, IV	chemotherapy, Iscador Q spezial	chemotherapy	EORTC-QLQ-C30

Grossarth-Maticek, 2006a	Germany	multi-center, multiple data-sets, randomized/ not randomized, 2 arms, unblinded, interventional/not interventional, nested matched pairs	MammaRand: 39; 39; 52,8 Mamma: 97; 97; 52,2	MammaRand: 39; 39; 52,9 Mamma: 97; 97; 52,2	breast cancer, T1a-T3	conventional oncological therapy, Iscador	conventional oncological therapy	self-regulation
Grossarth-Maticek, 2006b	Germany	multi-center, randomized, 2 arms, unblinded, interventional, nested matched pairs	17; 17; 44,5	17; 17; 44,6	breast cancer, T2-4	conventional oncological therapy, Iscador	conventional oncological therapy	self-regulation
Grossarth-Maticek, 2007a	Germany	multi-center, multiple data-sets, randomized/ not randomized, 2 arms, unblinded, interventional/not interventional, nested matched pairs	Cervix: 102; 102; 51 CervixMetRand: 19; 19; 47,7	Cervix: 102; 102; 51 CervixMetRand: 19; 19; 47,6	cervical cancer, IB-IVa	conventional oncological therapy, Iscador	conventional oncological therapy	self-regulation
Grossarth-Maticek, 2007b	Germany	multi-center, multiple data-sets, randomized/ not randomized, 2 arms, unblinded, interventional/not interventional, nested matched pairs	Ovar: 75; 75; 43 OvarRand: 21; 21; 45,4	Ovar: 75; 75; 45,1 OvarRand: 21; 21; 45,5	ovarian cancer, IA-C, IV	conventional oncological therapy, Iscador	conventional oncological therapy	self-regulation
Grossarth-Maticek, 2007c	Germany	multi-center, randomized, 2 arms, unblinded, interventional, nested matched pairs	22; 8; 52	22; 8; 52	melanoma, n/a	conventional oncological therapy, Iscador	conventional oncological therapy	self-regulation

Grossarth-Maticek, 2008	Germany	multi-center, multiple data-sets, randomized/ not randomized, 2 arms, unblinded, interventional/not interventional, nested matched pairs	Corpus: 105; 105; 58,5 CorpusRand: 31; 31; 55,1	Corpus: 105; 105; 59,1 CorpusRand: 31; 31; 55,1	corpus uteri cancer, IA-C, IIIa-IVb	conventional oncological therapy, Iscador	conventional oncological therapy	self-regulation
Heiny 1991	Germany*	randomized, 2 arms, unblinded, interventional	25; 25; n/a	21; 21; n/a	breast cancer, advanced	chemotherapy, Eurixor	chemotherapy, infusion of saline solution	QoL scale based on FLIC, self-assessment
Heiny 1997/1998	Germany*	randomized, 2 arms, unblinded, interventional	38; 16; 54,7	41; 18; 53,2	colorectal cancer, advanced	chemotherapy, Eurixor	chemotherapy	FACT-G
Kaiser 2001	Germany*	randomized, 2 arms, blinded, interventional, cross-over	29; 15; n/a in both arms	29; 15; n/a in both arms	multiple cancer, n/a	n/a, AbnobaVISCUM Mali 4	n/a, isotone puffer	ECOG
Kim 2012	South Korea	single-center, randomized, 2 arms, unblinded, interventional	16; 3; 53,8	16; 3; 54,9	gastric cancer, Ib, II	waiting for chemotherapy, AbnobaVISCUM Q	waiting for chemotherapy	EORTC-QLQ-C30
Lange 1988	Germany	single-center, randomized, 2 arms, unblinded, interventional	35; 9; 58,3	33; 9; 60,2	multiple cancer, n/a	conventional oncological therapy, Helixor A	conventional oncological therapy	KPI
Lenartz 1996	Germany*	randomized, 2 arms, unblinded, interventional	18; 6; 52	17; 7; 52	glioma, III-IV	conventional oncological therapy, mistletoe extract	conventional oncological therapy	Spitzer QoL

Loewe-Mesch 2008	Germany	single-center, not randomized, 2 arms, unblinded, interventional	39; 39; 47,5	43; 43; 47,5	breast cancer, T1a-c, TII	chemotherapy, Iscador M spezial	chemotherapy	EORTC-QLQ-C30
Longhi 2014	Italy	single-center, randomized, 2 arms, unblinded, interventional	9; 5; 28	11; 4; 39	osteosarcoma, IB- IIIB	Iscador P	Etoposide (oral)	EORTC-QLQ-C30
Piao 2004	China	multi-center, randomized, 2 arms, unblinded, interventional	118; 91; 52,6	115; 91; 51,7	multiple cancer, pTx, pT1-4	chemotherapy, Helixor	chemotherapy, Lentinan (i.m.)	TCM, FLIC, KPI
Semiglasov 2004	Bulgaria, Russia, Ukraine	multi-center, randomized, 4 arms, blinded, interventional	67; 67; 44,6	70; 70; 43,5	breast cancer, pT1-3	chemotherapy, Lektinol (PS76A)	chemotherapy, placebo	GLQ-8, Spitzer uniscale
Semiglasov 2006	Bulgaria, Russia, Ukraine	multi-center, randomized, 2 arms, blinded, interventional	176; 176; 46,4	176; 176; 45,9	breast cancer, pTis-pT3	chemotherapy, Lektinol (PS76A)	chemotherapy, placebo	FACT-G, GLQ-8, Spitzer uniscale
Steuer-Vogt 2006	Germany	multi-center, randomized, 2 arms, unblinded, interventional	200; 17; 55	199; 14; 55	head neck cancer, I-IV	surgery, Eurixor	surgery	EORTC-QLQ-C30
Tröger 2009	Serbia	single-center, randomized, 2 arms, unblinded, interventional	30; 30; 48,4	31; 31; 50,8	breast cancer, Tx, T1-3	chemotherapy, Iscador M spezial	chemotherapy	EORTC-QLQ-C30
Tröger 2014a	Serbia	single-center, randomized, 2 arms, unblinded, interventional	34; 34; 50,4	31; 31; 50,8	breast cancer, Tx, T1-3	chemotherapy, Helixor	chemotherapy	EORTC-QLQ-C30
Tröger 2014b	Serbia	single-center, randomized, 2 arms, unblinded, interventional	110; 45; 62,2	110; 47; 64,4	pancreatic cancer, T3-T4	supportive care, Iscador Q	supportive care	EORTC-QLQ-C30

* not explicitly reported

Table 2

Dimension	Included studies	# of patients	SMD	95% CI	p value
Physical functioning	[25, 29, 39, 42, 46-50, 57]	1116	0,65	-0,11-1,41	0,09
Role functioning	[25, 29, 39, 42, 46-50, 57]	1116	0,63	0,05-1,22	0,04
Emotional functioning	[25, 29, 39, 42, 46-50, 57]	1116	0,52	-0,10-1,13	0,1
Cognitive functioning	[25, 29, 39, 42, 47-50, 57]	779	0,46	-0,21-1,13	0,18
Social functioning	[25, 29, 39, 42, 47-50, 57]	779	0,62	0,22-1,03	0,002
Fatigue	[25, 29, 39, 42, 47-50, 57]	779	-0,79	-1,66-0,08	0,08
Nausea/Vomitting	[25, 29, 39, 42, 45-50, 57]	1247	-0,55	-1-(-0,1)	0,02
Pain	[25, 29, 39, 42, 46-50, 57]	1116	-0,86	-1,54-(-0,18)	0,01
Dyspnea	[25, 29, 39, 42, 47-50, 57]	779	-0,37	-0,65-(-0,09)	0,009
Insomnia	[25, 29, 39, 42, 45-50, 57]	1247	-0,54	-1,23-0,14	0,12
Appetite loss	[25, 29, 39, 42, 45-50, 57]	1247	-0,62	-1,29-0,05	0,07

Constipation	[25, 29, 39, 42, 47-50, 57]	779	-0,14	-0,41-0,13	0,31
Diarrhea	[25, 29, 39, 42, 47-50, 57]	779	-0,43	-0,86-0,01	0,05
Financial difficulties	[25, 29, 39, 47- 50, 57]	713	-0,69	-1,21-(-0,16)	0,01

Tab. 3

Moderator	N studies	Effect Sizes SMD*	95% CIs	Heterogeneity I ²	z-score	p value <=§
<i>Risk of Bias status</i>						
High	22	0.66	0.41-0.90	75.5	5.2	0.001
Low	1	0.84	0.62-1.1	0	7.4	0.001
Some	7	0.56	0.12-1.0	93.7	2.5	0.014
<i>Blinding</i>						
Yes	3	0.96	0.30-1.62	77.4	2.9	0.041
No	27	0.61	0.39-0.82	85.3	5.4	0.001
<i>Randomized</i>						
Yes	25	0.70	0.47-0.93	86.3	6.0	0.001
No	5	0.38	-0.09-0.85	63.4	1.58	0.11
<i>Additional Treatment</i>						
Chemotherapy	7	0.41	0.05-0.76	89.3	2.2	0.025
No add. Treatment	4	0.77	0.20-1.34	64.6	2.6	0.008
Individual best care	1	2.33	1.93-3.38	0	5.2	0.001
Conventional	16	0.58	0.36-0.81	66.2	5.1	0.001
Surgery	2	0.62	0.40-0.83	0	5.5	0.001
<i>Controls</i>						
Active	8	0.60	0.20-1.01	81.4	2.9	0.004
No active	22	0.65	0.41-0.90	85.9		0.001
<i>Cancer type</i>						
Lung cancer	3	-0.18	-0.41-0.06	0	1.45	0.15
Breast cancer	10	0.48	0.29-0.68	50	4.83	0.00001
<i>Product</i>						

Abnova V.	2	1.06	0.07-2.04	86.5	2.1	0.036
Eurixor	4	0.94	0.32-1.60	87.7	3.0	0.003
Helixor	3	0.35	0.13-0.57	0	3.1	0.002
Iscador	17	0.58	0.28-0.87	88.6	3.8	0.001
Lektinol	2	0.67	-0.13-1.48	63.4	1.6	0.1
Other	2	0.67	0.26-1.09	0	3.2	0.001
<i>Country</i>						
Germany	19	0.64	0.38-0.90	80.5	4.8	0.001
Other	11	0.64	0.30-0.98	89.4	3.7	0.001
<i>Sponsoring</i>						
Corporate	10	0.49	0.11-0.87	92.0	2.5	0.011
Public	3	0.64	-0.05-1.33	91.1	1.8	0.07
Mixed	10	0.73	0.36-1.1	35.2	3.8	0.001
No Information	7	0.73	0.27-1.19	82.8	3.1	0.002
<i>Type of Measure</i>						
Index ¹	6	0.33	-0.12-0.78	50.1	1.4	0.1
Scale ²	14	0.71	0.41-1.0	90.9	4.6	0.001
Self Regulation ³	10	0.73	0.39-1.07	35.2	4.1	0.001

*if heterogeneity > 25 random effects SMDs are given, else fixed effect

§ two-tailed

1 Karnofsky Index, ECOG, Spitzer QoL

2 EORTC QoL Q30, FACT, GLQ-8

3 Grossarth-Maticek's self-regulation scale

Tab. 4

Moderator	Point estimate	95% CIs	z-score	p value <=
<i>Study Year</i>				Model: p = 0.0001
Slope	0.026	0.012-0.04	3.8	0.001

<i>Age</i>				Model: p = 0.3
Slope	-0.006	-0.02-0.006	-1.05	0.2
<i>Duration of Treatment</i>				Model: p = 0.06
Slope	0.04	-0.0003-0.008	1.8	0.07